

RE: P241265-01  
Roof - HM Lot 177

MiTek, Inc.  
16023 Swingley Ridge Rd.  
Chesterfield, MO 63017  
314.434.1200

**Site Information:**

Customer: Clayton Properties Project Name: P241265-01  
Lot/Block: 177 Model: Basswood - Transitional 3 Car  
Address: 2758 SW 11th Terr Subdivision: Highland Meadows  
City: Lee's Summit State: MO

**General Truss Engineering Criteria & Design Loads (Individual Truss Design Drawings Show Special Loading Conditions):**

Design Code: IRC2018/TPI2014 Design Program: MiTek 20/20 8.6  
Wind Code: ASCE 7-16 Wind Speed: 115 mph  
Roof Load: 45.0 psf Floor Load: N/A psf

This package includes 22 individual, dated Truss Design Drawings and 0 Additional Drawings.

No.	Seal#	Truss Name	Date	No.	Seal#	Truss Name	Date
1	I67343658	B1	8/6/2024	21	I67343678	V9	8/6/2024
2	I67343659	B2	8/6/2024	22	I67343679	V10	8/6/2024
3	I67343660	B3	8/6/2024				
4	I67343661	D1	8/6/2024				
5	I67343662	D2	8/6/2024				
6	I67343663	D3	8/6/2024				
7	I67343664	E1	8/6/2024				
8	I67343665	E4	8/6/2024				
9	I67343666	E5	8/6/2024				
10	I67343667	E6	8/6/2024				
11	I67343668	E7	8/6/2024				
12	I67343669	G1	8/6/2024				
13	I67343670	G2	8/6/2024				
14	I67343671	R1	8/6/2024				
15	I67343672	V1	8/6/2024				
16	I67343673	V2	8/6/2024				
17	I67343674	V3	8/6/2024				
18	I67343675	V4	8/6/2024				
19	I67343676	V7	8/6/2024				
20	I67343677	V8	8/6/2024				

The truss drawing(s) referenced above have been prepared by  
MiTek USA, Inc. under my direct supervision  
based on the parameters provided by .

Truss Design Engineer's Name: Sevier, Scott

My license renewal date for the state of Missouri is December 31, 2025.

Missouri COA: 001193

**IMPORTANT NOTE:** The seal on these truss component designs is a certification that the engineer named is licensed in the jurisdiction(s) identified and that the designs comply with ANSI/TPI 1. These designs are based upon parameters shown (e.g., loads, supports, dimensions, shapes and design codes), which were given to MiTek. Any project specific information included is for MiTek customers file reference purpose only, and was not taken into account in the preparation of these designs. MiTek has not independently verified the applicability of the design parameters or the designs for any particular building. Before use, the building designer should verify applicability of design parameters and properly incorporate these designs into the overall building design per ANSI/TPI 1, Chapter 2.



August 06, 2024

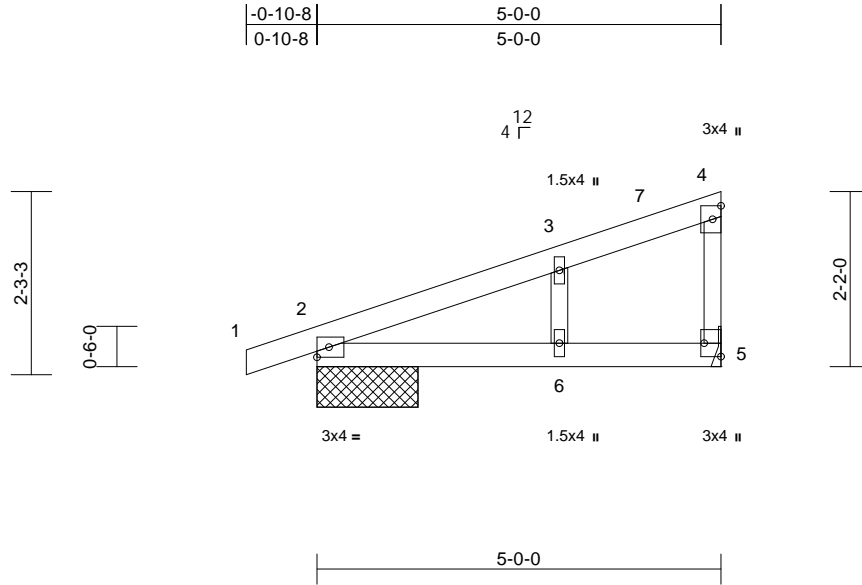
Job	Truss	Truss Type	Qty	Ply	Roof - HM Lot 177	RELEASE FOR CONSTRUCTION AS NOTED FOR PLAN REVIEW DEVELOPMENT SERVICES 167343658 LEE'S SUMMIT, MISSOURI
P241265-01	B1	Monopitch Supported Gable	1	1	Job Reference (optional)	

Premier Building Supply (Springhill, KS), Spring Hills, KS - 66083,

Run: 8.63 S Jul 12 2024 Print: 8.630 S Jul 12 2024 MiTek Industries, Inc. Mon Aug 05 10:44:15 Page: 1

ID:rc4sjKzljJtsErm8VGMRJ\_zwwqN-RfC?PsB70Hq3NSgPqnL8w3ulTXbGKW/rCDoi7J4zJC+1

01/27/2025



Scale = 1:28.5

Plate Offsets (X, Y): [5:Edge,0-2-8]												
<b>Loading</b>	(psf)	<b>Spacing</b>	2-0-0	<b>CSI</b>		<b>DEFL</b>	in	(loc)	l/defl	L/d	<b>PLATES</b>	<b>GRIP</b>
TCLL (roof)	25.0	Plate Grip DOL	1.15	TC	0.25	Vert(LL)	0.05	2-6	>999	240	MT20	197/144
TCDL	10.0	Lumber DOL	1.15	BC	0.28	Vert(CT)	-0.06	2-6	>999	180		
BCLL	0.0	Rep Stress Incr	YES	WB	0.04	Horz(CT)	0.00	5	n/a	n/a		
BCDL	10.0	Code	IRC2018/TPI2014	Matrix-S							Weight: 19 lb	FT = 20%

**LUMBER**  
TOP CHORD 2x4 SP No.2  
BOT CHORD 2x4 SP No.2  
WEBS 2x3 SPF No.2  
OTHERS 2x3 SPF No.2

**BRACING**  
TOP CHORD Structural wood sheathing directly applied or 5-0-0 oc purlins, except end verticals.  
BOT CHORD Rigid ceiling directly applied or 10-0-0 oc bracing.

**REACTIONS** (size) 2=1-3-0, 5= Mechanical  
Max Horiz 2=85 (LC 8)  
Max Uplift 2=-77 (LC 8), 5=-61 (LC 12)  
Max Grav 2=287 (LC 1), 5=215 (LC 1)

**FORCES** (lb) - Maximum Compression/Maximum Tension  
TOP CHORD 1-2=0/6, 2-3=-112/0, 3-4=-59/16, 4-5=-111/124  
BOT CHORD 2-6=-56/56, 5-6=-56/56  
WEBS 3-6=-70/158

- 6) Refer to girder(s) for truss to truss connections.  
7) Provide mechanical connection (by others) of truss to bearing plate capable of withstanding 61 lb uplift at joint 5 and 77 lb uplift at joint 2.  
8) This truss is designed in accordance with the 2018 International Residential Code sections R502.11.1 and R802.10.2 and referenced standard ANSI/TPI 1.
- LOAD CASE(S)** Standard

- NOTES**
- 1) Wind: ASCE 7-16; Vult=115mph (3-second gust)  
Vasd=91mph; TCCL=6.0psf; BCDL=6.0psf; h=35ft;  
Ke=1.00; Cat. II; Exp C; Enclosed; MWFRS (envelope)  
exterior zone and C-C Exterior(2E) -0-10-8 to 4-1-8,  
Interior (1) 4-1-8 to 4-10-12 zone; cantilever left and  
right exposed; end vertical left exposed; C-C for  
members and forces & MWFRS for reactions shown;  
Lumber DOL=1.60 plate grip DOL=1.60
  - 2) Truss designed for wind loads in the plane of the truss  
only. For studs exposed to wind (normal to the face),  
see Standard Industry Gable End Details as applicable,  
or consult qualified building designer as per ANSI/TPI 1.
  - 3) Gable studs spaced at 2-0-0 oc.
  - 4) This truss has been designed for a 10.0 psf bottom  
chord live load nonconcurrent with any other live loads.
  - 5) Bearings are assumed to be: Joint 2 SP No.2 crushing  
capacity of 565 psi.



August 6, 2024

**WARNING - Verify design parameters and READ NOTES ON THIS AND INCLUDED MITEK REFERENCE PAGE MII-7473 rev. 1/2/2023 BEFORE USE.**  
Design valid for use only with MiTek® connectors. This design is based only upon parameters shown, and is for an individual building component, not a truss system. Before use, the building designer must verify the applicability of design parameters and properly incorporate this design into the overall building design. Bracing indicated is to prevent buckling of individual truss web and/or chord members only. Additional temporary and permanent bracing is always required for stability and to prevent collapse with possible personal injury and property damage. For general guidance regarding the fabrication, storage, delivery, erection and bracing of trusses and truss systems, see **ANSI/TPI1 Quality Criteria, and DSB-22** available from Truss Plate Institute (www.tpinst.org) and **BCSI Building Component Safety Information** available from the Structural Building Component Association (www.sbcsccomponents.com)

**MiTek®**  
16023 Swingley Ridge Rd.  
Chesterfield, MO 63017  
314.434.1200 / MiTek-US.com

Run: 8.63 S Jul 12 2024 Print: 8.630 S Jul 12 2024 MiTek Industries, Inc. Mon Aug 05 16:44:16 Page: 1  
ID:4QEzufucAXMxz8xWxEVwdZwwpA-RfC?PsB70Hq3NSgPqnL8w3uITxbGKWrCD0f7J4ZJC?

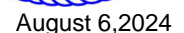
Scale = 1:27.7

**LUMBER**

## BRACING

## NOTES

- LOAD CASE(S)** Standard



**WARNING – Verify design parameters and READ NOTES ON THIS and INCLUDED MITER KNOT REFERENCE ASSEMBLY DRAWINGS BEFORE USE.** Design valid for use only with MiTek® connectors. This design is based only upon parameters shown, and is for an individual building component, not a truss system. Before use, the building designer must verify the applicability of design parameters and properly incorporate this design into the overall building design. Bracing indicated is to prevent buckling of individual truss web and/or chord members only. Additional temporary and permanent bracing is always required for stability and to prevent collapse with possible personal injury and property damage. For general guidance regarding the fabrication, storage, delivery, erection and bracing of trusses and truss systems, see **ANSI/TPI1 Quality Criteria, and DSB-22** available from Truss Plate Institute ([www.tpinet.org](http://www.tpinet.org)) and **BCSI Building Component Safety Information** available from the Structural Building Component Association ([www.sbcscomponents.com](http://www.sbcscomponents.com))

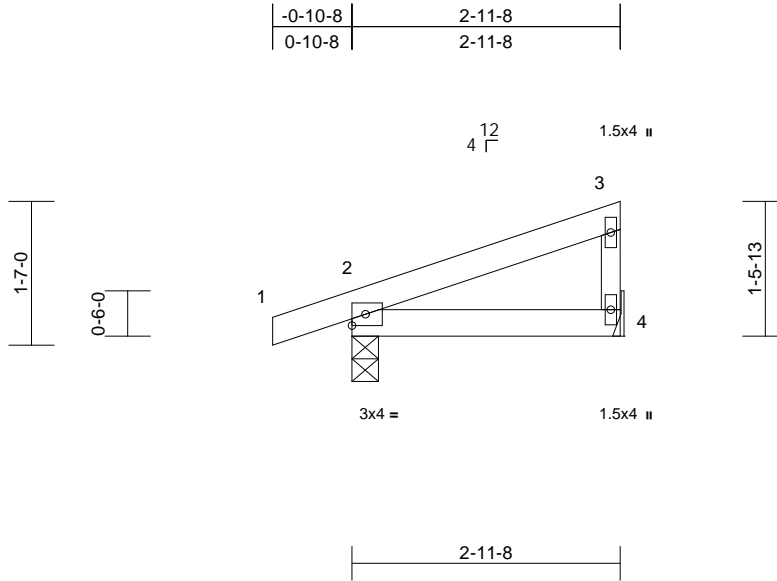
16023 Swingley Ridge Rd.  
Chesterfield, MO 63017  
314.434.1200 / MiTek-US.com

Job	Truss	Truss Type	Qty	Ply	Roof - HM Lot 177	RELEASE FOR CONSTRUCTION
P241265-01	B3	Monopitch	7	1	Job Reference (optional)	AS NOTED FOR PLAN REVIEW DEVELOPMENT SERVICES 167343660 LEE'S SUMMIT, MISSOURI

Premier Building Supply (Springhill, KS), Spring Hills, KS - 66083,

Run: 8.63 S Jul 12 2024 Print: 8.630 S Jul 12 2024 MiTek Industries, Inc. Mon Aug 05 10:44:16 Page: 1  
ID:k?UxzaFoLR0qy8sWjXGlcLzwwoj-RfC?PsB70Hq3NSgPqnL8w3uITXbGKwVrCDoi734zJC?#

01/27/2025



<b>Loading</b>	(psf)	<b>Spacing</b>	2-0-0	<b>CSI</b>		<b>DEFL</b>	in	(loc)	l/defl	L/d	<b>PLATES</b>	<b>GRIP</b>
TCLL (roof)	25.0	Plate Grip DOL	1.15	TC	0.13	Vert(LL)	0.00	2-4	>999	240	MT20	197/144
TCDL	10.0	Lumber DOL	1.15	BC	0.08	Vert(CT)	-0.01	2-4	>999	180		
BCLL	0.0	Rep Stress Incr	YES	WB	0.00	Horz(CT)	n/a	-	n/a	n/a		
BCDL	10.0	Code	IRC2018/TPI2014	Matrix-P							Weight: 11 lb	FT = 20%

#### LUMBER

TOP CHORD 2x4 SP No.2  
BOT CHORD 2x4 SP No.2  
WEBS 2x3 SPF No.2

#### BRACING

TOP CHORD Structural wood sheathing directly applied or  
3-0-0 oc purlins, except end verticals.  
BOT CHORD Rigid ceiling directly applied or 10-0-0 oc  
bracing.

**REACTIONS** (size) 2=0-3-8, 4= Mechanical  
Max Horiz 2=56 (LC 8)  
Max Uplift 2=-72 (LC 8), 4=-32 (LC 12)  
Max Grav 2=207 (LC 1), 4=108 (LC 1)

**FORCES** (lb) - Maximum Compression/Maximum  
Tension

TOP CHORD 1-2=0/6, 2-3=-61/28, 3-4=-81/124  
BOT CHORD 2-4=0/0

#### NOTES

- Wind: ASCE 7-16; Vult=115mph (3-second gust)  
Vasd=91mph; TCDL=6.0psf; BCDL=6.0psf; h=35ft;  
Ke=1.00; Cat. II; Exp C; Enclosed; MWFRS (envelope)  
exterior zone and C-C Exterior(2E) zone; cantilever left  
and right exposed; end vertical left exposed; C-C for  
members and forces & MWFRS for reactions shown;  
Lumber DOL=1.60 plate grip DOL=1.60
- This truss has been designed for a 10.0 psf bottom  
chord live load nonconcurrent with any other live loads.
- Bearings are assumed to be: Joint 2 SP No.2 crushing  
capacity of 565 psi.
- Refer to girder(s) for truss to truss connections.
- Provide mechanical connection (by others) of truss to  
bearing plate capable of withstanding 32 lb uplift at joint  
4 and 72 lb uplift at joint 2.
- This truss is designed in accordance with the 2018  
International Residential Code sections R502.11.1 and  
R802.10.2 and referenced standard ANSI/TPI 1.

**LOAD CASE(S)** Standard



August 6, 2024

**WARNING - Verify design parameters and READ NOTES ON THIS AND INCLUDED MITEK REFERENCE PAGE MII-7473 rev. 1/2/2023 BEFORE USE.**

Design valid for use only with MiTek® connectors. This design is based only upon parameters shown, and is for an individual building component, not a truss system. Before use, the building designer must verify the applicability of design parameters and properly incorporate this design into the overall building design. Bracing indicated is to prevent buckling of individual truss web and/or chord members only. Additional temporary and permanent bracing is always required for stability and to prevent collapse with possible personal injury and property damage. For general guidance regarding the fabrication, storage, delivery, erection and bracing of trusses and truss systems, see **ANSI/TPI1 Quality Criteria, and DSB-22** available from Truss Plate Institute ([www.tpinst.org](http://www.tpinst.org)) and **BCSI Building Component Safety Information** available from the Structural Building Component Association ([www.sbcsccomponents.com](http://www.sbcsccomponents.com))

**MiTek®**

16023 Swingley Ridge Rd.  
Chesterfield, MO 63017  
314.434.1200 / MiTek-US.com

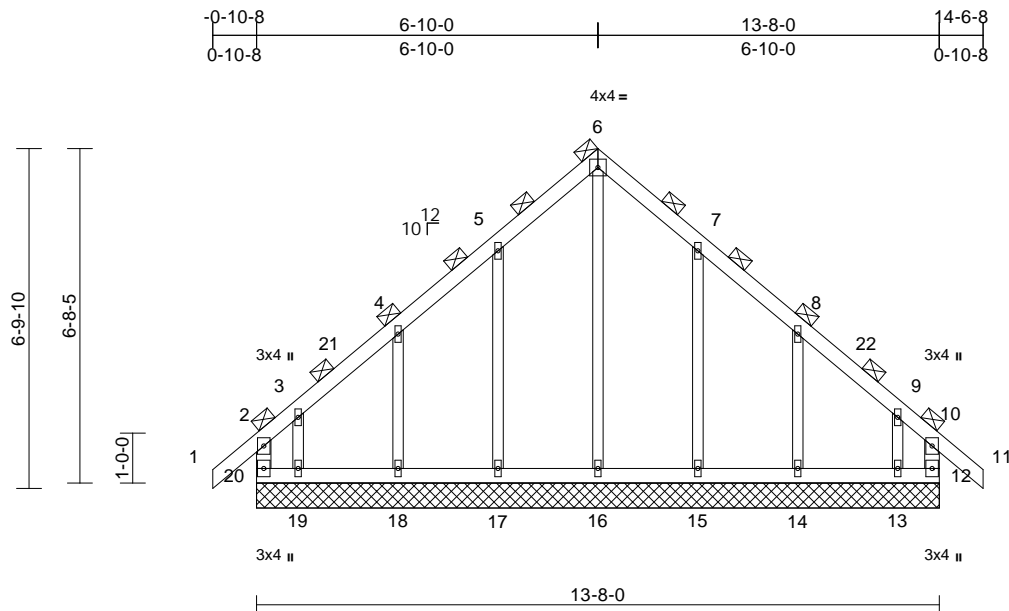
Job	Truss	Truss Type	Qty	Ply	Roof - HM Lot 177
P241265-01	D1	Common Supported Gable	1	1	Job Reference (optional)

Premier Building Supply (Springhill, KS), Spring Hills, KS - 66083,

Run: 8.63 S Jul 12 2024 Print: 8.630 S Jul 12 2024 MiTek Industries, Inc. Mon Aug 05 10:44:16 Page: 1

ID:wjvgVRNMEbdXh3iv6zXHnzww7s-RfC?PsB70Hq3NSgPqnL8w3uITxBGhWrCDoi734zJC?

01/27/2025



Scale = 1:46.1

Loading	(psf)	Spacing	4-0-0	CSI	DEFL	in	(loc)	l/defl	L/d	PLATES	GRIP
TCLL (roof)	25.0	Plate Grip DOL	1.15	TC	0.20	n/a	-	n/a	999	MT20	244/190
TCDL	10.0	Lumber DOL	1.15	BC	0.17	n/a	-	n/a	999		
BCLL	0.0	Rep Stress Incr	NO	WB	0.40	0.00	12	n/a	n/a		
BCDL	10.0	Code	IRC2018/TPI2014	Matrix-R						Weight: 71 lb	FT = 20%

**LUMBER**

TOP CHORD	2x4 SP No.2
BOT CHORD	2x4 SP No.2
WEBS	2x4 SP No.2
OTHERS	2x3 SPF No.2

**BRACING**

TOP CHORD	2-0-0 oc purlins (6-0-0 max.), except end verticals
	(Switched from sheathed: Spacing > 2-8-0).
BOT CHORD	Rigid ceiling directly applied or 10-0-0 oc bracing.

<b>REACTIONS</b> (size)	12=13-8-0, 13=13-8-0, 14=13-8-0, 15=13-8-0, 16=13-8-0, 17=13-8-0, 18=13-8-0, 19=13-8-0, 20=13-8-0
Max Horiz	20=423 (LC 10)
Max Uplift	12=247 (LC 9), 13=364 (LC 13), 14=203 (LC 13), 15=196 (LC 13), 17=198 (LC 12), 18=201 (LC 12), 19=389 (LC 12), 20=330 (LC 8)
Max Grav	12=397 (LC 19), 13=388 (LC 11), 14=396 (LC 20), 15=407 (LC 20), 16=423 (LC 22), 17=410 (LC 19), 18=393 (LC 19), 19=445 (LC 10), 20=465 (LC 20)

**FORCES**

	(lb) - Maximum Compression/Maximum Tension
TOP CHORD	2-20=-349/228, 1-2=0/91, 2-3=-335/302, 3-4=-212/205, 4-5=-178/286, 5-6=-276/454, 6-7=-276/442, 7-8=-162/269, 8-9=-170/162, 9-10=-267/228, 10-11=0/91, 10-12=-302/170
BOT CHORD	19-20=-198/239, 18-19=-198/239, 17-18=-198/239, 16-17=-198/239, 15-16=-198/239, 14-15=-198/239, 13-14=-198/239, 12-13=-198/239
WEBS	6-16=-415/136, 5-17=-329/268, 4-18=-316/290, 3-19=-267/282, 7-15=-327/267, 8-14=-318/291, 9-13=-264/270

**NOTES**

- Unbalanced roof live loads have been considered for this design.
- Wind: ASCE 7-16; Vult=115mph (3-second gust) Vasd=91mph; TCDL=6.0psf; BCDL=6.0psf; h=35ft; Ke=1.00; Cat. II; Exp C; Enclosed; MWFRS (envelope) exterior zone and C-C Exterior(2E) -0-10-8 to 4-1-8, Interior (1) 4-1-8 to 6-10-0, Exterior(2R) 6-10-0 to 11-10-0, Interior (1) 11-10-0 to 14-6-8 zone; cantilever left and right exposed; end vertical left and right exposed; C-C for members and forces & MWFRS for reactions shown; Lumber DOL=1.60 plate grip DOL=1.60
- Truss designed for wind loads in the plane of the truss only. For studs exposed to wind (normal to the face), see Standard Industry Gable End Details as applicable, or consult qualified building designer as per ANSI/TPI 1.
- All plates are 1.5x4 MT20 unless otherwise indicated.
- Gable requires continuous bottom chord bearing.
- Truss to be fully sheathed from one face or securely braced against lateral movement (i.e. diagonal web).
- Gable studs spaced at 2-0-0 oc.
- This truss has been designed for a 10.0 psf bottom chord live load nonconcurrent with any other live loads.
- All bearings are assumed to be SP No.2 crushing capacity of 565 psi.
- Provide mechanical connection (by others) of truss to bearing plate capable of withstanding 330 lb uplift at joint 20, 247 lb uplift at joint 12, 198 lb uplift at joint 17, 201 lb uplift at joint 18, 389 lb uplift at joint 19, 196 lb uplift at joint 15, 203 lb uplift at joint 14 and 364 lb uplift at joint 13.
- This truss is designed in accordance with the 2018 International Residential Code sections R502.11.1 and R802.10.2 and referenced standard ANSI/TPI 1.
- Graphical purlin representation does not depict the size or the orientation of the purlin along the top and/or bottom chord.

**LOAD CASE(S)** Standard

August 6, 2024

**WARNING - Verify design parameters and READ NOTES ON THIS AND INCLUDED MITEK REFERENCE PAGE MII-7473 rev. 1/2/2023 BEFORE USE.**

Design valid for use only with MiTek® connectors. This design is based only upon parameters shown, and is for an individual building component, not a truss system. Before use, the building designer must verify the applicability of design parameters and properly incorporate this design into the overall building design. Bracing indicated is to prevent buckling of individual truss web and/or chord members only. Additional temporary and permanent bracing is always required for stability and to prevent collapse with possible personal injury and property damage. For general guidance regarding the fabrication, storage, delivery, erection and bracing of trusses and truss systems, see **ANSI/TPI1 Quality Criteria, and DSB-22** available from Truss Plate Institute ([www.tpinst.org](http://www.tpinst.org)) and **BCSI Building Component Safety Information** available from the Structural Building Component Association ([www.sbcsccomponents.com](http://www.sbcsccomponents.com))

**MiTek®**  
 16023 Swingley Ridge Rd.  
 Chesterfield, MO 63017  
 314.434.1200 / MiTek-US.com

Job	Truss	Truss Type	Qty	Ply	Roof - HM Lot 177
P241265-01	D2	Roof Special Structural Gable	1	1	Job Reference (optional)

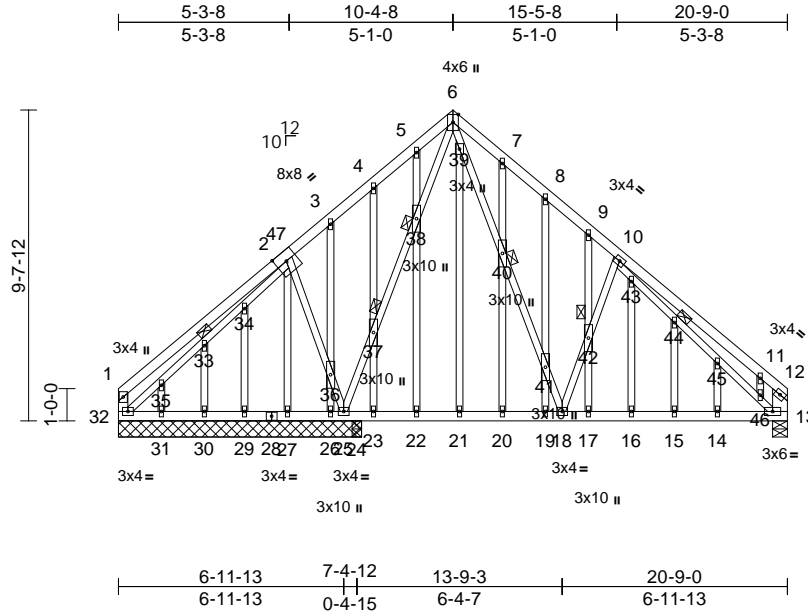
Premier Building Supply (Springhill, KS), Spring Hills, KS - 66083,

Run: 8.63 S Jul 12 2024 Print: 8.630 S Jul 12 2024 MiTek Industries, Inc. Mon Aug 05 10:44:16 Page: 1

ID:0Un07T0ZcLyQZnshImJUDzwddO-RfC?PsB70Hq3NSgPqnL8w3uITxb6KWrcD0rJ4ZJC?

RELEASE FOR CONSTRUCTION  
AS NOTED FOR PLAN REVIEW  
DEVELOPMENT SERVICES  
167343662  
LEE'S SUMMIT, MISSOURI

01/27/2025



Scale = 1:71.5

Loading	(psf)	Spacing	2-0-0	CSI		DEFL	in	(loc)	l/defl	L/d	PLATES	GRIP
TCLL (roof)	25.0	Plate Grip DOL	1.15	TC	0.33	Vert(LL)	-0.02	15-16	>999	240	MT20	244/190
TCDL	10.0	Lumber DOL	1.15	BC	0.29	Vert(CT)	-0.04	15-16	>999	180		
BCLL	0.0	Rep Stress Incr	YES	WB	0.21	Horz(CT)	0.01	13	n/a	n/a		
BCDL	10.0	Code	IRC2018/TPI2014	Matrix-S							Weight: 165 lb	FT = 20%

<b>LUMBER</b>	
TOP CHORD	2x4 SP No.2
BOT CHORD	2x4 SP No.2
WEBS	2x3 SPF No.2 *Except* 32-1:2x4 SP No.2, 13-12:2x6 SPF No.2
OTHERS	2x3 SPF No.2

<b>BRACING</b>	
TOP CHORD	Structural wood sheathing directly applied or 6-0-0 oc purlins, except end verticals.
BOT CHORD	Rigid ceiling directly applied or 10-0-0 oc bracing.
JOINTS	1 Brace at Jt(s): 33, 37, 38, 40, 42, 44

<b>REACTIONS</b>	(size)	13=0-5-8, 24=0-3-8, 25=7-6-8, 26=7-6-8, 27=7-6-8, 29=7-6-8, 30=7-6-8, 31=7-6-8, 32=7-6-8
	Max Horiz	32=271 (LC 9)
	Max Uplift	13=91 (LC 13), 24=190 (LC 12), 25=83 (LC 13), 27=86 (LC 12), 29=8 (LC 8), 31=21 (LC 12), 32=74 (LC 13)
	Max Grav	13=613 (LC 1), 24=490 (LC 19), 25=252 (LC 26), 26=74 (LC 3), 27=189 (LC 19), 29=56 (LC 11), 30=50 (LC 3), 31=58 (LC 10), 32=252 (LC 20)

<b>FORCES</b>	(lb) - Maximum Compression/Maximum Tension
TOP CHORD	1-2=210/156, 2-3=172/172, 3-4=113/181, 4-5=174/219, 5-6=160/248, 6-7=455/330, 7-8=472/275, 8-9=459/227, 9-10=517/209, 10-11=477/191, 11-12=491/77, 1-32=-235/156, 12-13=-420/69

<b>BOT CHORD</b>	31-32=-134/183, 30-31=-134/183, 29-30=-134/183, 27-29=-134/183, 26-27=-134/174, 25-26=-134/174, 24-25=-31/215, 23-24=-31/215, 22-23=-31/215, 21-22=-31/215, 20-21=-31/215, 19-20=-31/215, 18-19=-31/215, 17-18=-21/407, 16-17=-21/407, 15-16=-21/407, 14-15=-21/407, 13-14=-21/407
<b>WEBS</b>	6-39=-303/596, 39-40=-266/487, 40-41=-255/475, 18-41=-276/513, 18-42=-287/206, 10-42=-275/207, 25-37=-432/0, 37-38=-419/0, 6-38=-433/0, 2-36=-174/190, 25-36=-230/252, 32-35=-177/151, 33-35=-176/150, 33-34=-178/152, 2-34=-206/175, 10-43=-164/34, 43-44=-186/12, 44-45=-169/13, 45-46=-173/12, 13-46=-162/13, 30-33=-3/4, 29-34=-39/32, 31-35=-2/2, 2-27=-166/104, 3-36=-1/17, 26-36=-68/66, 4-37=-160/102, 23-37=-152/108, 5-38=-16/44, 22-38=-24/36, 21-39=-40/117, 7-40=-50/66, 20-40=-37/55, 8-41=-114/60, 19-41=-154/80, 9-42=0/27, 17-42=0/43, 16-43=0/87, 15-44=-33/0, 14-45=-21/57, 11-46=-33/124

#### NOTES

- Unbalanced roof live loads have been considered for this design.
- Wind: ASCE 7-16; Vult=115mph (3-second gust)  
Vasd=91mph; TCDL=6.0psf; BCDL=6.0psf; h=35ft;  
Ke=1.00; Cat. II; Exp C; Enclosed; MWFRS (envelope)  
exterior zone and C-C Exterior(2E) 0-1-12 to 4-11-13,  
Interior (1) 4-11-13 to 10-4-8, Exterior(2R) 10-4-8 to  
15-6-2, Interior (1) 15-6-2 to 20-6-4 zone; cantilever left  
and right exposed ; end vertical left and right  
exposed;C-C for members and forces & MWFRS for  
reactions shown; Lumber DOL=1.60 plate grip  
DOL=1.60

- Truss designed for wind loads in the plane of the truss only. For studs exposed to wind (normal to the face), see Standard Industry Gable End Details as applicable, or consult qualified building designer as per ANSI/TPI 1.
  - All plates are 1.5x4 MT20 unless otherwise indicated.
  - Truss to be fully sheathed from one face or securely braced against lateral movement (i.e. diagonal web).
  - Gable studs spaced at 1-4-0 oc.
  - This truss has been designed for a 10.0 psf bottom chord live load nonconcurrent with any other live loads.
  - All bearings are assumed to be SP No.2 crushing capacity of 565 psi.
  - Provide mechanical connection (by others) of truss to bearing plate capable of withstanding 83 lb uplift at joint 25, 74 lb uplift at joint 32, 91 lb uplift at joint 13, 8 lb uplift at joint 29, 21 lb uplift at joint 31, 86 lb uplift at joint 27 and 190 lb uplift at joint 24.
  - This truss is designed in accordance with the 2018 International Residential Code sections R502.11.1 and R802.10.2 and referenced standard ANSI/TPI 1.
- LOAD CASE(S)** Standard



August 6, 2024

**WARNING - Verify design parameters and READ NOTES ON THIS AND INCLUDED MITEK REFERENCE PAGE MII-7473 rev. 1/2/2023 BEFORE USE.**

Design valid for use only with MiTek® connectors. This design is based only upon parameters shown, and is for an individual building component, not a truss system. Before use, the building designer must verify the applicability of design parameters and properly incorporate this design into the overall building design. Bracing indicated is to prevent buckling of individual truss web and/or chord members only. Additional temporary and permanent bracing is always required for stability and to prevent collapse with possible personal injury and property damage. For general guidance regarding the fabrication, storage, delivery, erection and bracing of trusses and truss systems, see **ANSI/TPI1 Quality Criteria, and DSB-22** available from Truss Plate Institute (www.tpinst.org) and **BCSI Building Component Safety Information** available from the Structural Building Component Association (www.sbcsccomponents.com)

**MiTek®**

16023 Swingley Ridge Rd.  
Chesterfield, MO 63017  
314.434.1200 / MiTek-US.com

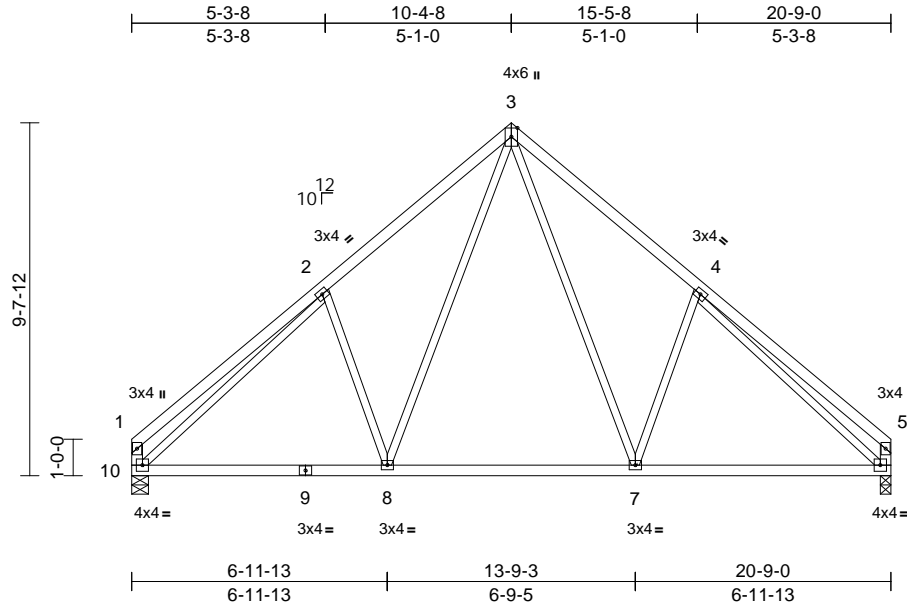
Job	Truss	Truss Type	Qty	Ply	Roof - HM Lot 177
P241265-01	D3	Common	7	1	Job Reference (optional)

RELEASE FOR CONSTRUCTION  
AS NOTED FOR PLAN REVIEW  
DEVELOPMENT SERVICES  
167343663  
LEE'S SUMMIT, MISSOURI

Premier Building Supply (Springhill, KS), Spring Hills, KS - 66083,

Run: 8.63 S Jul 12 2024 Print: 8.630 S Jul 12 2024 MiTek Industries, Inc. Mon Aug 05 10:44:17  
ID:pw10jO1hEphDIMFL4rqrrzezwwfy-RfC?PsB70Hq3NSgPqnL8w3uITXbGKWCD0i7J42uC?Page:1

01/27/2025



Scale = 1:63

Loading	(psf)	Spacing	2-0-0	CSI		DEFL	in	(loc)	l/defl	L/d	PLATES	GRIP
TCLL (roof)	25.0	Plate Grip DOL	1.15	TC	0.39	Vert(LL)	-0.05	6-7	>999	240	MT20	244/190
TCDL	10.0	Lumber DOL	1.15	BC	0.43	Vert(CT)	-0.11	8-10	>999	180		
BCLL	0.0	Rep Stress Incr	YES	WB	0.93	Horz(CT)	0.02	6	n/a	n/a		
BCDL	10.0	Code	IRC2018/TPI2014	Matrix-S							Weight: 108 lb	FT = 20%

#### LUMBER

TOP CHORD 2x4 SP No.2  
BOT CHORD 2x4 SP No.2  
WEBS 2x3 SPF No.2 \*Except\* 10-1,6-5:2x4 SP No.2

6) This truss is designed in accordance with the 2018 International Residential Code sections R502.11.1 and R802.10.2 and referenced standard ANSI/TPI 1.

LOAD CASE(S) Standard

#### BRACING

TOP CHORD Structural wood sheathing directly applied or 5-6-4 oc purlins, except end verticals.  
BOT CHORD Rigid ceiling directly applied or 10-0-0 oc bracing.

REACTIONS (size) 6=0-3-8, 10=0-5-8  
Max Horiz 10=262 (LC 11)  
Max Uplift 6=-113 (LC 13), 10=-113 (LC 12)  
Max Grav 6=921 (LC 1), 10=921 (LC 1)

#### FORCES

(lb) - Maximum Compression/Maximum Tension  
TOP CHORD 1-2=-351/173, 2-3=-970/312, 3-4=-970/310, 4-5=-361/166, 1-10=-328/165, 5-6=-334/161  
BOT CHORD 8-10=-166/796, 7-8=-19/537, 6-7=-89/731  
WEBS 3-7=-210/461, 4-7=-311/300, 3-8=-211/460, 2-8=-310/300, 2-10=-761/79, 4-6=-761/70

#### NOTES

- Unbalanced roof live loads have been considered for this design.
- Wind: ASCE 7-16; Vult=115mph (3-second gust) Vasd=91mph; TCDL=6.0psf; BCDL=6.0psf; h=35ft; Ke=1.00; Cat. II; Exp C; Enclosed; MWFRS (envelope) exterior zone and C-C Exterior(2E) 0-1-12 to 5-2-14, Interior (1) 5-2-14 to 10-4-8, Exterior(2R) 10-4-8 to 15-6-2, Interior (1) 15-6-2 to 20-7-4 zone; cantilever left and right exposed; end vertical right exposed; C-C for members and forces & MWFRS for reactions shown; Lumber DOL=1.60 plate grip DOL=1.60
- This truss has been designed for a 10.0 psf bottom chord live load nonconcurrent with any other live loads.
- All bearings are assumed to be SP No.2 crushing capacity of 565 psi.
- Provide mechanical connection (by others) of truss to bearing plate capable of withstanding 113 lb uplift at joint 10 and 113 lb uplift at joint 6.



August 6, 2024

**WARNING - Verify design parameters and READ NOTES ON THIS AND INCLUDED MITEK REFERENCE PAGE MII-7473 rev. 1/2/2023 BEFORE USE.**

Design valid for use only with MiTek® connectors. This design is based only upon parameters shown, and is for an individual building component, not a truss system. Before use, the building designer must verify the applicability of design parameters and properly incorporate this design into the overall building design. Bracing indicated is to prevent buckling of individual truss web and/or chord members only. Additional temporary and permanent bracing is always required for stability and to prevent collapse with possible personal injury and property damage. For general guidance regarding the fabrication, storage, delivery, erection and bracing of trusses and truss systems, see **ANSI/TPI1 Quality Criteria, and DSB-22** available from Truss Plate Institute (www.tpinst.org) and **BCSI Building Component Safety Information** available from the Structural Building Component Association (www.sbcsccomponents.com)

**MiTek®**

16023 Swingley Ridge Rd.  
Chesterfield, MO 63017  
314.434.1200 / MiTek-US.com

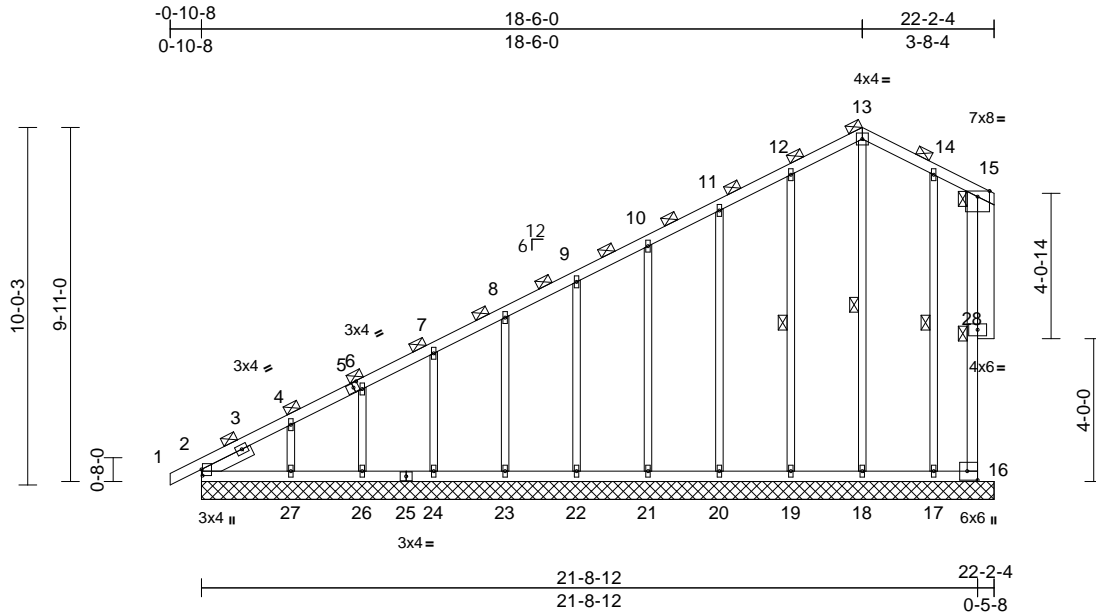
Job	Truss	Truss Type	Qty	Ply	Roof - HM Lot 177
P241265-01	E1	Common Supported Gable	1	1	Job Reference (optional)

AS NOTED FOR PLAN REVIEW  
DEVELOPMENT SERVICES  
167343664  
LEE'S SUMMIT, MISSOURI

Premier Building Supply (Springhill, KS), Spring Hills, KS - 66083,

Run: 8.63 S Jul 12 2024 Print: 8.630 S Jul 12 2024 MiTek Industries, Inc. Mon Aug 05 10:44:17 Page: 1  
ID:bSBHlwRtVwODq1AP3GREtazww5H-RfC?PsB70Hq3NSgPqnL8w3uTXjGKWrCb07J4z0C4t

01/27/2025



Scale = 1:64.5

Plate Offsets (X, Y): [2:0-2-1,0-0-5], [5:0-1-12,0-1-8], [16:Edge,0-3-8]

Loading	(psf)	Spacing	4-0-0	CSI	DEFL	in	(loc)	l/defl	L/d	PLATES	GRIP
TCLL (roof)	25.0	Plate Grip DOL	1.15	TC	0.87	Vert(LL)	n/a	-	n/a	999	244/190
TCDL	10.0	Lumber DOL	1.15	BC	0.51	Vert(CT)	n/a	-	n/a	999	
BCLL	0.0	Rep Stress Incr	NO	WB	0.40	Horz(CT)	0.01	16	n/a	n/a	
BCDL	10.0	Code	IRC2018/TPI2014	Matrix-S							
Weight: 138 lb FT = 20%											

**LUMBER**  
TOP CHORD 2x4 SP No.2  
BOT CHORD 2x4 SP No.2  
WEBS 2x4 SP 1650F 1.5E  
OTHERS 2x3 SPF No.2 \*Except\* 28-15:2x6 SPF No.2  
SLIDER Left 2x4 SP No.2 -- 1-6-7

**BRACING**  
TOP CHORD 2-0-0 oc purlins (5-6-9 max.), except end verticals  
(Switched from sheeted: Spacing > 2-8-0).  
BOT CHORD Rigid ceiling directly applied or 9-7-14 oc bracing.  
WEBS 1 Row at midpt 15-16, 13-18, 12-19, 14-17

**REACTIONS** (size) 2=22-2-4, 16=22-2-4, 17=22-2-4, 18=22-2-4, 19=22-2-4, 20=22-2-4, 21=22-2-4, 22=22-2-4, 23=22-2-4, 24=22-2-4, 26=22-2-4, 27=22-2-4  
Max Horiz 2=759 (LC 9)  
Max Uplift 2=-36 (LC 8), 16=-91 (LC 8), 17=-77 (LC 13), 18=-126 (LC 11), 19=-123 (LC 12), 20=-126 (LC 12), 21=-122 (LC 12), 22=-123 (LC 12), 23=-121 (LC 12), 24=-129 (LC 12), 26=-91 (LC 12), 27=-261 (LC 12)  
Max Grav 2=475 (LC 20), 16=144 (LC 20), 17=310 (LC 26), 18=370 (LC 19), 19=377 (LC 25), 20=359 (LC 25), 21=360 (LC 1), 22=360 (LC 25), 23=359 (LC 1), 24=365 (LC 25), 26=341 (LC 1), 27=432 (LC 25)

**FORCES** (lb) - Maximum Compression/Maximum Tension

**TOP CHORD** 1-2=0/11, 2-4=-990/650, 4-6=-779/549, 6-7=-690/525, 7-8=-578/485, 8-9=-471/448, 9-10=-397/410, 10-11=-365/426, 11-12=-365/540, 12-13=-396/635, 13-14=-395/613, 14-15=-450/603, 15-16=-388/528  
**BOT CHORD** 2-27=-305/391, 26-27=-305/391, 24-26=-305/391, 23-24=-305/391, 22-23=-305/391, 21-22=-305/391, 20-21=-305/391, 19-20=-305/391, 18-19=-305/391, 17-18=-305/391, 16-17=-305/391  
**WEBS** 13-18=-377/221, 12-19=-298/197, 11-20=-279/206, 10-21=-280/193, 9-22=-280/193, 8-23=-280/193, 7-24=-282/202, 6-26=-270/208, 4-27=-326/416, 14-17=-332/375

**NOTES**

- Unbalanced roof live loads have been considered for this design.
- Wind: ASCE 7-16; Vult=115mph (3-second gust) Vasd=91mph; TCDL=6.0psf; BCDL=6.0psf; h=35ft; Ke=1.00; Cat. II; Exp C; Enclosed; MWFRS (envelope) exterior zone and C-C Corner(3E) -0-10-8 to 4-1-8, Exterior(2N) 4-1-8 to 18-6-0, Corner(3E) 18-6-0 to 21-8-12 zone; cantilever left and right exposed; end vertical left and right exposed; C-C for members and forces & MWFRS for reactions shown; Lumber DOL=1.60 plate grip DOL=1.60
- Truss designed for wind loads in the plane of the truss only. For studs exposed to wind (normal to the face), see Standard Industry Gable End Details as applicable, or consult qualified building designer as per ANSI/TPI 1.
- All plates are 1.5x4 MT20 unless otherwise indicated.
- Gable requires continuous bottom chord bearing.
- Gable studs spaced at 2-0-0 oc.
- This truss has been designed for a 10.0 psf bottom chord live load nonconcurrent with any other live loads.

- All bearings are assumed to be SP No.2 crushing capacity of 565 psi.
- Provide mechanical connection (by others) of truss to bearing plate capable of withstanding 91 lb uplift at joint 16, 36 lb uplift at joint 2, 126 lb uplift at joint 18, 123 lb uplift at joint 19, 126 lb uplift at joint 20, 122 lb uplift at joint 21, 123 lb uplift at joint 22, 121 lb uplift at joint 23, 129 lb uplift at joint 24, 91 lb uplift at joint 26, 261 lb uplift at joint 27 and 77 lb uplift at joint 17.
- This truss is designed in accordance with the 2018 International Residential Code sections R502.11.1 and R802.10.2 and referenced standard ANSI/TPI 1.
- Graphical purlin representation does not depict the size or the orientation of the purlin along the top and/or bottom chord.

**LOAD CASE(S)** Standard

August 6, 2024

**WARNING - Verify design parameters and READ NOTES ON THIS AND INCLUDED MITEK REFERENCE PAGE MII-7473 rev. 1/2/2023 BEFORE USE.**

Design valid for use only with MiTek® connectors. This design is based only upon parameters shown, and is for an individual building component, not a truss system. Before use, the building designer must verify the applicability of design parameters and properly incorporate this design into the overall building design. Bracing indicated is to prevent buckling of individual truss web and/or chord members only. Additional temporary and permanent bracing is always required for stability and to prevent collapse with possible personal injury and property damage. For general guidance regarding the fabrication, storage, delivery, erection and bracing of trusses and truss systems, see **ANSI/TPI1 Quality Criteria, and DSB-22** available from Truss Plate Institute (www.tpinst.org) and **BCSI Building Component Safety Information** available from the Structural Building Component Association (www.sbcsccomponents.com)

**MiTek®**  
16023 Swingley Ridge Rd.  
Chesterfield, MO 63017  
314.434.1200 / MiTek-US.com

Job	Truss	Truss Type	Qty	Ply	Roof - HM Lot 177
P241265-01	E4	Roof Special	8	1	Job Reference (optional)

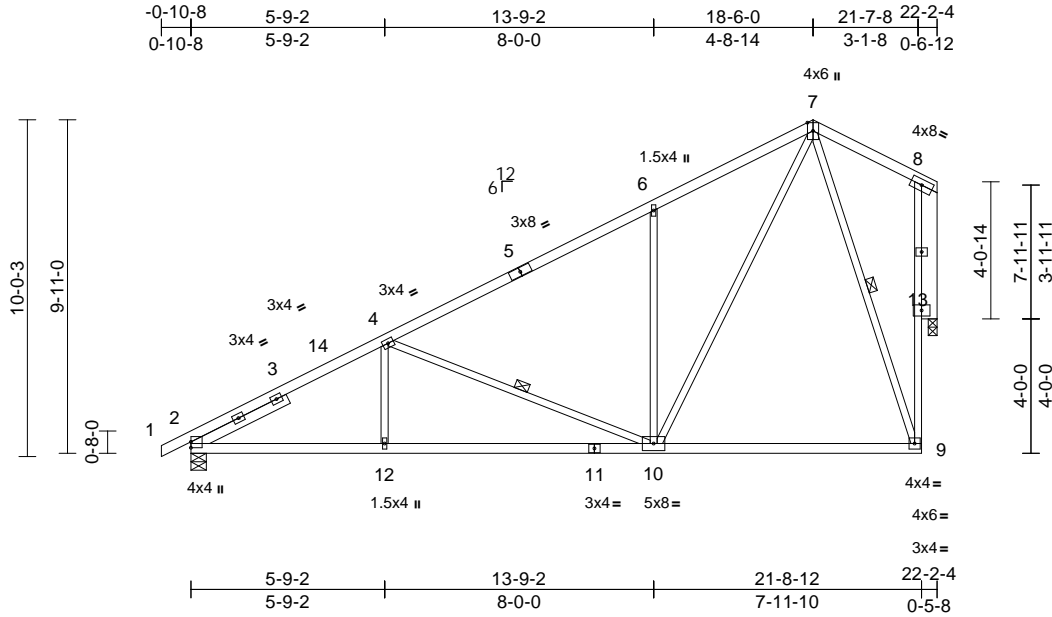
AS NOTED FOR PLAN REVIEW  
DEVELOPMENT SERVICES  
167343665  
LEE'S SUMMIT, MISSOURI

Premier Building Supply (Springhill, KS), Spring Hills, KS - 66083,

Run: 8.63 S Jul 12 2024 Print: 8.630 S Jul 12 2024 MiTek Industries, Inc. Mon Aug 05 10:44:17 Page: 1

ID: X3j9csSdTd7hyQgxh8rn6OzwvzW-RfC?PsB70Hq3NSgPqnL8w3uITXbGKWrCDoi73zJJC?

01/27/2025



Scale = 1:68.5

Loading	(psf)	Spacing	2-0-0	CSI		DEFL	in	(loc)	l/defl	L/d	PLATES	GRIP
TCLL (roof)	25.0	Plate Grip DOL	1.15	TC	0.79	Vert(LL)	-0.11	9-10	>999	240	MT20	244/190
TCDL	10.0	Lumber DOL	1.15	BC	0.71	Vert(CT)	-0.23	9-10	>999	180		
BCLL	0.0	Rep Stress Incr	YES	WB	0.96	Horz(CT)	-0.03	13	n/a	n/a		
BCDL	10.0	Code	IRC2018/TPI2014	Matrix-S							Weight: 121 lb	FT = 20%

**LUMBER**

TOP CHORD 2x4 SP No.2  
BOT CHORD 2x4 SP No.2 \*Except\* 9-8:2x3 SPF No.2  
WEBS 2x3 SPF No.2 \*Except\* 13-8:2x6 SPF No.2  
SLIDER Left 2x4 SP No.2 -- 3-2-3

**BRACING**

TOP CHORD Structural wood sheathing directly applied or 3-5-6 oc purlins, except end verticals.  
BOT CHORD Rigid ceiling directly applied or 8-4-8 oc bracing.

WEBS 1 Row at midpt 4-10, 7-9

**REACTIONS** (size) 2=0-5-8, 13=0-3-2  
Max Horiz 2=384 (LC 12)  
Max Uplift 2=-153 (LC 12), 13=-235 (LC 12)  
Max Grav 2=1036 (LC 1), 13=972 (LC 1)

**FORCES**

(lb) - Maximum Compression/Maximum Tension  
TOP CHORD 1-2=0/6, 2-4=-1623/208, 4-6=-943/120, 6-7=-924/276, 7-8=-64/49, 9-13=-212/848, 8-13=-124/66  
BOT CHORD 2-12=-483/1364, 10-12=-483/1364, 9-10=-82/264  
WEBS 6-10=-521/308, 7-10=-338/1066, 4-12=0/277, 4-10=-680/274, 7-9=-822/263

**NOTES**

- Unbalanced roof live loads have been considered for this design.
- Wind: ASCE 7-16; Vult=115mph (3-second gust)  
Vasd=91mph; TCDL=6.0psf; BCDL=6.0psf; h=35ft;  
Ke=1.00; Cat. II; Exp C; Enclosed; MWFRS (envelope) exterior zone and C-C Exterior(2E) -0-10-8 to 4-1-8, Interior (1) 4-1-8 to 18-6-0, Exterior(2E) 18-6-0 to 21-7-8 zone; cantilever left and right exposed ; end vertical left exposed; C-C for members and forces & MWFRS for reactions shown; Lumber DOL=1.60 plate grip DOL=1.60
- This truss has been designed for a 10.0 psf bottom chord live load nonconcurrent with any other live loads.

- Bearings are assumed to be: Joint 2 SP No.2 crushing capacity of 565 psi, Joint 13 SPF No.2 crushing capacity of 425 psi.
- Bearing at joint(s) 13 considers parallel to grain value using ANSI/TPI 1 angle to grain formula. Building designer should verify capacity of bearing surface.
- Provide mechanical connection (by others) of truss to bearing plate capable of withstanding 153 lb uplift at joint 2 and 235 lb uplift at joint 13.
- This truss is designed in accordance with the 2018 International Residential Code sections R502.11.1 and R802.10.2 and referenced standard ANSI/TPI 1.

**LOAD CASE(S)** Standard

August 6, 2024

**WARNING - Verify design parameters and READ NOTES ON THIS AND INCLUDED MITEK REFERENCE PAGE MII-7473 rev. 1/2/2023 BEFORE USE.**

Design valid for use only with MiTek® connectors. This design is based only upon parameters shown, and is for an individual building component, not a truss system. Before use, the building designer must verify the applicability of the design parameters and properly incorporate this design into the overall building design. Bracing indicated is to prevent buckling of individual truss web and/or chord members only. Additional temporary and permanent bracing is always required for stability and to prevent collapse with possible personal injury and property damage. For general guidance regarding the fabrication, storage, delivery, erection and bracing of trusses and truss systems, see **ANSI/TPI1 Quality Criteria, and DSB-22** available from Truss Plate Institute (www.tpinst.org) and **BCSI Building Component Safety Information** available from the Structural Building Component Association (www.sbcsccomponents.com)

**MiTek®**

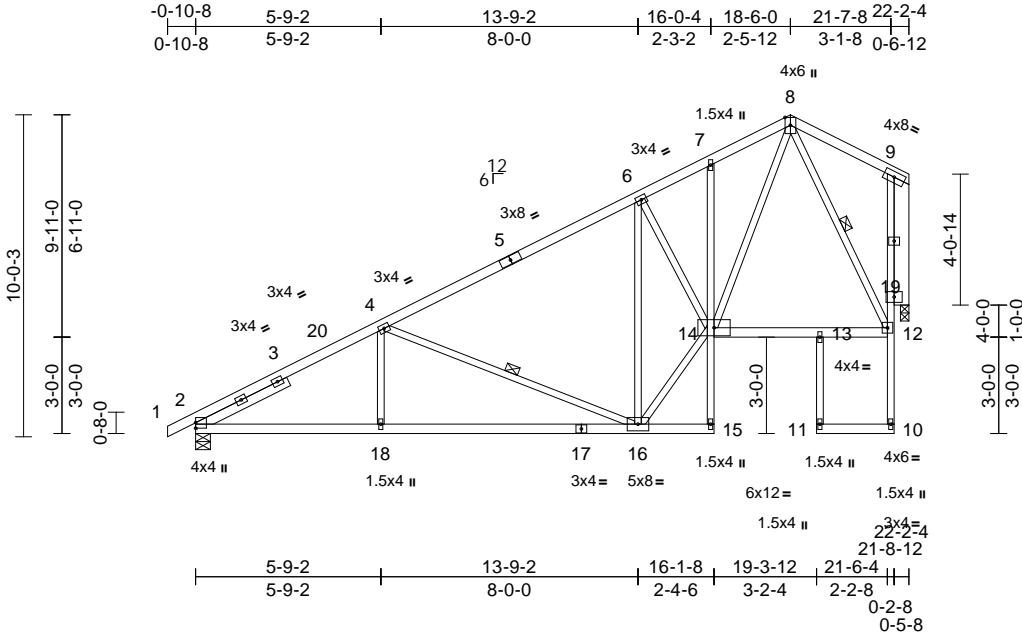
16023 Swingley Ridge Rd.  
Chesterfield, MO 63017  
314.434.1200 / MiTek-US.com

Job	Truss	Truss Type	Qty	Ply	Roof - HM Lot 177
P241265-01	E5	Roof Special	2	1	Job Reference (optional)

Premier Building Supply (Springhill, KS), Spring Hills, KS - 66083,

Run: 8.63 S Jul 12 2024 Print: 8.630 S Jul 12 2024 MiTek Industries, Inc. Mon Aug 05 10:44:17  
ID:X3j9csSdTd?hyQgxh8rn6OzwvzW-RfC?PsB70Hq3NSgPqnL8w3uITXbGKWrCDoi734zJC?Page:1

01/27/2025



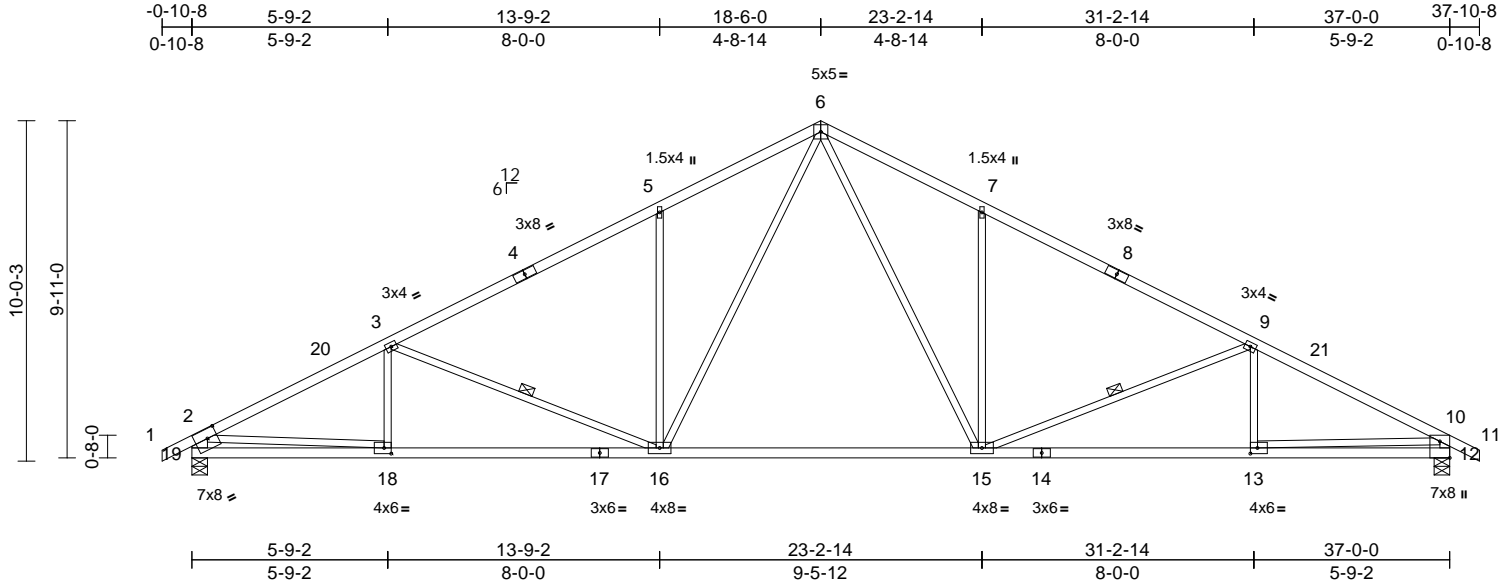
Job	Truss	Truss Type	Qty	Ply	Roof - HM Lot 177	RELEASE FOR CONSTRUCTION
P241265-01	E6	Common	7	1	Job Reference (optional)	AS NOTED FOR PLAN REVIEW DEVELOPMENT SERVICES 167343667 LEE'S SUMMIT, MISSOURI

Premier Building Supply (Springhill, KS), Spring Hills, KS - 66083,

Run: 8.63 S Jul 12 2024 Print: 8.630 S Jul 12 2024 MiTek Industries, Inc. Mon Aug 05 10:44:11 Page: 1

ID: TnZ3x61kRmd3IVZaqXdQQz5zwvtc-RfC?PsB70Hq3NSgPqnL8w3uITxhGLWwRCDot174zJC7f

01/27/2025



Scale = 1:67.8

Plate Offsets (X, Y): [12:Edge,0-3-8], [13:0-2-8,0-2-0], [18:0-2-8,0-2-0], [19:0-3-8,0-3-4]

Loading	(psf)	Spacing	2-0-0	CSI	DEFL	in	(loc)	l/defl	L/d	PLATES	GRIP
TCLL (roof)	25.0	Plate Grip DOL	1.15	TC	0.64	Vert(LL)	-0.19	15-16	>999	240	244/190
TCDL	10.0	Lumber DOL	1.15	BC	0.90	Vert(CT)	-0.44	15-16	>993	180	
BCLL	0.0	Rep Stress Incr	YES	WB	0.92	Horz(CT)	0.10	12	n/a	n/a	
BCDL	10.0	Code	IRC2018/TPI2014	Matrix-S							
Weight: 176 lb FT = 20%											

#### LUMBER

TOP CHORD 2x4 SP 1650F 1.5E  
BOT CHORD 2x4 SP No.2  
WEBS 2x3 SPF No.2 \*Except\* 19-2:2x6 SPF No.2,  
12-10:2x4 SP 1650F 1.5E

#### BRACING

TOP CHORD Structural wood sheathing directly applied or  
3-4-13 oc purlins, except end verticals.  
BOT CHORD Rigid ceiling directly applied or 10-0-0 oc  
bracing. Except:  
8-5-5 oc bracing: 16-18.

WEBS 1 Row at midpt 3-16, 9-15

REACTIONS (size) 12=0-5-8, 19=0-5-8  
Max Horiz 19=166 (LC 17)  
Max Uplift 12=276 (LC 13), 19=278 (LC 12)  
Max Grav 12=1719 (LC 1), 19=1726 (LC 1)

#### FORCES

(lb) - Maximum Compression/Maximum  
Tension  
TOP CHORD 1-2=0/35, 2-3=-2848/431, 3-5=-2360/418,  
5-6=-2337/549, 6-7=-2343/549,  
7-9=-2365/419, 9-10=-2884/437, 10-11=0/32,  
12-19=-1661/338, 10-12=-1654/334  
BOT CHORD 18-19=-249/555, 16-18=-474/2474,  
15-16=-102/1561, 13-15=-312/2506,  
12-13=-114/613  
WEBS 5-16=-512/308, 6-16=-325/1012,  
9-13=-32/166, 7-15=-511/308, 3-18=-52/151,  
10-13=-208/1899, 3-16=-556/246,  
6-15=-327/1021, 2-18=-225/1934,  
9-15=-581/251

#### NOTES

1) Unbalanced roof live loads have been considered for  
this design.

- Wind: ASCE 7-16; Vult=115mph (3-second gust)  
Vasd=91mph; TCDL=6.0psf; BCDL=6.0psf; h=35ft;  
Ke=1.00; Cat. II; Exp C; Enclosed; MWFRS (envelope)  
exterior zone and C-C Exterior(2E) -0-10-8 to 4-1-8,  
Interior (1) 4-1-8 to 18-6-0, Exterior(2R) 18-6-0 to  
23-2-14, Interior (1) 23-2-14 to 37-10-8 zone; cantilever  
left and right exposed; end vertical left and right  
exposed; C-C for members and forces & MWFRS for  
reactions shown; Lumber DOL=1.60 plate grip  
DOL=1.60
- The Fabrication Tolerance at joint 10 = 16%
- This truss has been designed for a 10.0 psf bottom  
chord live load nonconcurrent with any other live loads.
- All bearings are assumed to be SP No.2 crushing  
capacity of 565 psi.
- Provide mechanical connection (by others) of truss to  
bearing plate capable of withstanding 276 lb uplift at  
joint 12 and 278 lb uplift at joint 19.
- This truss is designed in accordance with the 2018  
International Residential Code sections R502.11.1 and  
R802.10.2 and referenced standard ANSI/TPI 1.

LOAD CASE(S) Standard



August 6, 2024

**WARNING - Verify design parameters and READ NOTES ON THIS AND INCLUDED MITEK REFERENCE PAGE MII-7473 rev. 1/2/2023 BEFORE USE.**

Design valid for use only with MiTek® connectors. This design is based only upon parameters shown, and is for an individual building component, not a truss system. Before use, the building designer must verify the applicability of design parameters and properly incorporate this design into the overall building design. Bracing indicated is to prevent buckling of individual truss web and/or chord members only. Additional temporary and permanent bracing is always required for stability and to prevent collapse with possible personal injury and property damage. For general guidance regarding the fabrication, storage, delivery, erection and bracing of trusses and truss systems, see **ANSI/TPI1 Quality Criteria, and DSB-22** available from Truss Plate Institute ([www.tpinst.org](http://www.tpinst.org)) and **BCSI Building Component Safety Information** available from the Structural Building Component Association ([www.sbcsccomponents.com](http://www.sbcsccomponents.com))

**MiTek®**

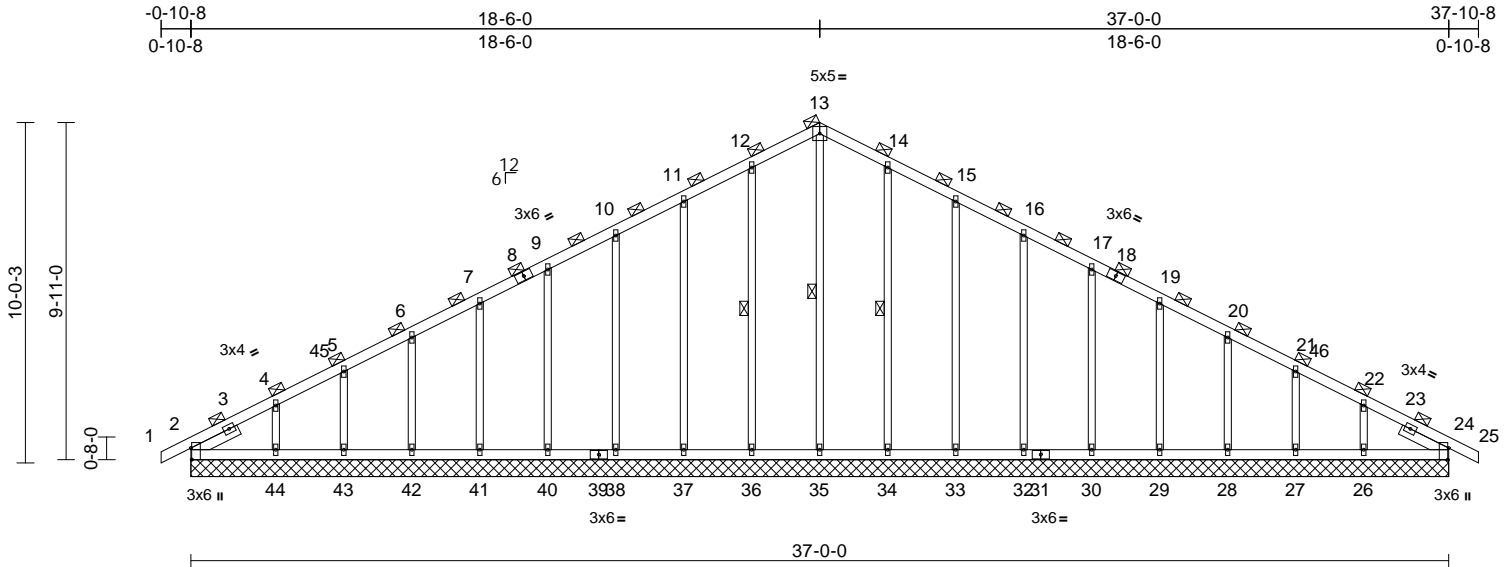
16023 Swingley Ridge Rd.  
Chesterfield, MO 63017  
314.434.1200 / MiTek-US.com

Job	Truss	Truss Type	Qty	Ply	Roof - HM Lot 177	RELEASE FOR CONSTRUCTION
P241265-01	E7	Common Supported Gable	1	1	Job Reference (optional)	AS NOTED FOR PLAN REVIEW DEVELOPMENT SERVICES 167343668 LEE'S SUMMIT, MISSOURI

Premier Building Supply (Springhill, KS), Spring Hills, KS - 66083,

Run: 8.63 S Jul 12 2024 Print: 8.630 S Jul 12 2024 MiTek Industries, Inc. Mon Aug 05 10:44:17 AM 2025 Page: 1  
ID:30TC0Xcr8WgF3uEpecUgNDzwss-RfC?PsB70Hq3NSgPqnL8w3uITXbCKWrcDn7d4zjC7f

01/27/2025



Scale = 1:67.8

Plate Offsets (X, Y): [2:0-4-1,Edge], [18:0-0-0,0-0-0], [24:0-4-1,Edge]

Loading	(psf)	Spacing	4-0-0	CSI	DEFL	in	(loc)	l/defl	L/d	PLATES	GRIP
TCLL (roof)	25.0	Plate Grip DOL	1.15	TC	0.20	Vert(LL)	n/a	-	n/a	999	MT20
TCDL	10.0	Lumber DOL	1.15	BC	0.12	Vert(CT)	n/a	-	n/a	999	244/190
BCLL	0.0	Rep Stress Incr	NO	WB	0.40	Horz(CT)	0.02	24	n/a	n/a	
BCDL	10.0	Code	IRC2018/TPI2014	Matrix-S							
Weight: 195 lb FT = 20%											

**LUMBER**  
TOP CHORD 2x4 SP No.2  
BOT CHORD 2x4 SP No.2  
OTHERS 2x3 SPF No.2  
SLIDER Left 2x4 SP No.2 -- 1-6-7, Right 2x4 SP No.2 -- 1-6-7

**BRACING**  
TOP CHORD 2-0-0 oc purlins (6-0-0 max.)  
(Switched from sheeted: Spacing > 2-8-0).  
BOT CHORD Rigid ceiling directly applied or 10-0-0 oc  
bracing.

**WEBS** 1 Row at midpt 13-35, 12-36, 14-34  
**REACTIONS** (size) 2=37-0-0, 24=37-0-0, 26=37-0-0,  
27=37-0-0, 28=37-0-0, 29=37-0-0,  
30=37-0-0, 32=37-0-0, 33=37-0-0,  
34=37-0-0, 35=37-0-0, 36=37-0-0,  
37=37-0-0, 38=37-0-0, 40=37-0-0,  
41=37-0-0, 42=37-0-0, 43=37-0-0,  
44=37-0-0

Max Horiz 2=-365 (LC 13)  
Max Uplift 2=-53 (LC 13), 26=-211 (LC 13),  
27=-102 (LC 13), 28=-127 (LC 13),  
29=-121 (LC 13), 30=-123 (LC 13),  
32=-120 (LC 13), 33=-134 (LC 13),  
34=-101 (LC 13), 36=-109 (LC 12),  
37=-131 (LC 12), 38=-121 (LC 12),  
40=-123 (LC 12), 41=-121 (LC 12),  
42=-128 (LC 12), 43=-96 (LC 12),  
44=-238 (LC 12)  
Max Grav 2=372 (LC 21), 24=368 (LC 1),  
26=426 (LC 26), 27=343 (LC 1),  
28=364 (LC 26), 29=359 (LC 1),  
30=360 (LC 26), 32=360 (LC 1),  
33=359 (LC 26), 34=376 (LC 26),  
35=416 (LC 22), 36=376 (LC 25),  
37=359 (LC 25), 38=360 (LC 1),  
40=360 (LC 25), 41=359 (LC 1),  
42=364 (LC 25), 43=343 (LC 1),  
44=426 (LC 25)

**FORCES** (lb) - Maximum Compression/Maximum  
Tension  
**TOP CHORD** 1-2=0/11, 2-4=-486/167, 4-5=-324/179,  
5-6=-257/209, 6-7=-204/262, 7-9=-165/317,  
9-10=-146/373, 10-11=-183/473,  
11-12=-222/588, 12-13=-257/681,  
13-14=-257/681, 14-15=-222/588,  
15-16=-183/473, 16-17=-146/367,  
17-19=-117/259, 19-20=-117/151,  
20-21=-147/62, 21-22=-197/44,  
22-24=-331/100, 24-25=0/11  
**BOT CHORD** 2-44=-96/385, 43-44=-96/385,  
42-43=-96/385, 41-42=-96/385,  
40-41=-96/385, 38-40=-96/385,  
37-38=-96/385, 36-37=-96/385,  
35-36=-96/385, 34-35=-96/385,  
33-34=-96/385, 32-33=-96/385,  
30-32=-96/385, 29-30=-96/385,  
28-29=-96/385, 27-28=-96/385,  
26-27=-96/385, 24-26=-96/385  
**WEBS** 13-35=-425/84, 12-36=-296/163,  
11-37=-279/208, 10-38=-280/191,  
9-40=-280/193, 7-41=-280/193,  
6-42=-282/197, 5-43=-271/202,  
4-44=-321/414, 14-34=-296/163,  
15-33=-279/208, 16-32=-280/191,  
17-30=-280/193, 19-29=-280/193,  
20-28=-282/197, 21-27=-271/203,  
22-26=-321/407

**NOTES**  
1) Unbalanced roof live loads have been considered for  
this design.

- Wind: ASCE 7-16; Vult=115mph (3-second gust)  
Vasd=91mph; TCDL=6.0psf; BCDL=6.0psf; h=35ft;  
Ke=1.00; Cat. II; Exp C; Enclosed; MWFRS (envelope)  
exterior zone and C-C Corner(3E) -0-10-8 to 4-1-8,  
Exterior(2N) 4-1-8 to 18-6-0, Corner(3R) 18-6-0 to  
23-6-0, Exterior(2N) 23-6-0 to 37-10-8 zone; cantilever  
left and right exposed ; end vertical left and right  
exposed;C-C for members and forces & MWFRS for  
reactions shown; Lumber DOL=1.60 plate grip  
DOL=1.60
- Truss designed for wind loads in the plane of the truss  
only. For studs exposed to wind (normal to the face),  
see Standard Industry Gable End Details as applicable,  
or consult qualified building designer as per ANSI/TPI 1.
- All plates are 1.5x4 MT20 unless otherwise indicated.
- Gable requires continuous bottom chord bearing.
- Gable studs spaced at 2-0-0 oc.
- This truss has been designed for a 10.0 psf bottom  
chord live load nonconcurrent with any other live loads.
- All bearings are assumed to be SP No.2 crushing  
capacity of 565 psi.



August 6, 2024

Continued on page 2

**WARNING - Verify design parameters and READ NOTES ON THIS AND INCLUDED MITEK REFERENCE PAGE MII-7473 rev. 1/2/2023 BEFORE USE.**

Design valid for use only with MiTek® connectors. This design is based only upon parameters shown, and is for an individual building component, not a truss system. Before use, the building designer must verify the applicability of design parameters and properly incorporate this design into the overall building design. Bracing indicated is to prevent buckling of individual truss web and/or chord members only. Additional temporary and permanent bracing is always required for stability and to prevent collapse with possible personal injury and property damage. For general guidance regarding the fabrication, storage, delivery, erection and bracing of trusses and truss systems, see **ANSI/TPI1 Quality Criteria, and DSB-22** available from Truss Plate Institute (www.tpinst.org) and **BCSI Building Component Safety Information** available from the Structural Building Component Association (www.sbscomponents.com)

**MiTek®**

16023 Swingley Ridge Rd.  
Chesterfield, MO 63017  
314.434.1200 / MiTek-US.com

Job	Truss	Truss Type	Qty	Ply	Roof - HM Lot 177
P241265-01	E7	Common Supported Gable	1	1	Job Reference (optional)

RELEASE FOR CONSTRUCTION

AS NOTED FOR PLAN REVIEW

DEVELOPMENT SERVICES

167343668

LEE'S SUMMIT, MISSOURI

Premier Building Supply (Springhill, KS), Spring Hills, KS - 66083,

Run: 8.63 S Jul 12 2024 Print: 8.630 S Jul 12 2024 MiTek Industries, Inc. Mon Aug 05 16:44:17 Page: 2

ID:30TC0Xcr8WgF3uEpecUgNDzwvss-RfC?PsB70Hq3NSgPqnL8w3ulTXbCKWwCDon7d4zJC7f

01/27/2025

- 9) Provide mechanical connection (by others) of truss to bearing plate capable of withstanding 53 lb uplift at joint 2, 109 lb uplift at joint 36, 131 lb uplift at joint 37, 121 lb uplift at joint 38, 123 lb uplift at joint 40, 121 lb uplift at joint 41, 128 lb uplift at joint 42, 96 lb uplift at joint 43, 238 lb uplift at joint 44, 101 lb uplift at joint 34, 134 lb uplift at joint 33, 120 lb uplift at joint 32, 123 lb uplift at joint 30, 121 lb uplift at joint 29, 127 lb uplift at joint 28, 102 lb uplift at joint 27 and 211 lb uplift at joint 26.
- 10) This truss is designed in accordance with the 2018 International Residential Code sections R502.11.1 and R802.10.2 and referenced standard ANSI/TPI 1.
- 11) Graphical purlin representation does not depict the size or the orientation of the purlin along the top and/or bottom chord.

LOAD CASE(S) Standard

 **WARNING - Verify design parameters and READ NOTES ON THIS AND INCLUDED MITEK REFERENCE PAGE MII-7473 rev. 1/2/2023 BEFORE USE.**

Design valid for use only with MiTek® connectors. This design is based only upon parameters shown, and is for an individual building component, not a truss system. Before use, the building designer must verify the applicability of design parameters and properly incorporate this design into the overall building design. Bracing indicated is to prevent buckling of individual truss web and/or chord members only. Additional temporary and permanent bracing is always required for stability and to prevent collapse with possible personal injury and property damage. For general guidance regarding the fabrication, storage, delivery, erection and bracing of trusses and truss systems, see **ANSI/TPI1 Quality Criteria, and DSB-22** available from Truss Plate Institute ([www.tpinst.org](http://www.tpinst.org)) and **BCSI Building Component Safety Information** available from the Structural Building Component Association ([www.sbcsccomponents.com](http://www.sbcsccomponents.com))

**MiTek®**

16023 Swingley Ridge Rd.  
Chesterfield, MO 63017  
314.434.1200 / MiTek-US.com

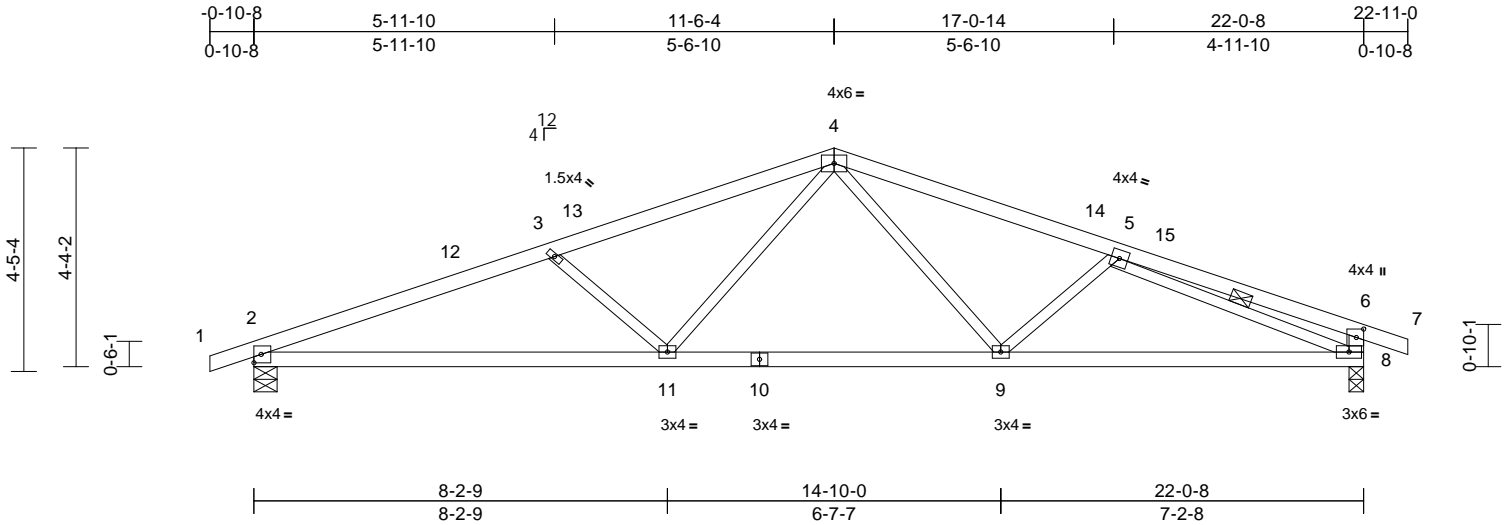
**MiTek®**  
16023 Swingley Ridge Rd.  
Chesterfield, MO 63017  
314.434.1200 / MiTek-US.com

Job	Truss	Truss Type	Qty	Ply	Roof - HM Lot 177
P241265-01	G2	Common	5	1	Job Reference (optional)

Premier Building Supply (Springhill, KS), Spring Hills, KS - 66083,

Run: 8.63 S Jul 12 2024 Print: 8.630 S Jul 12 2024 MiTek Industries, Inc. Mon Aug 05 10:44:18 Page: 1  
ID:dFDR6k5IVQ5m7TW0jeK7qmypbwY-RfC?PsB70Hq3NSgPqnL8w3uITXb6KWrcD6rJ4zJC?

01/27/2025



Scale = 1:45.8

Plate Offsets (X, Y): [6:0-2-0,0-1-12]

Loading	(psf)	Spacing	2-0-0	CSI	DEFL	in	(loc)	l/defl	L/d	PLATES	GRIP	
TCLL (roof)	25.0	Plate Grip DOL	1.15	TC	0.57	Vert(LL)	-0.13	2-11	>999	240	MT20	197/144
TCDL	10.0	Lumber DOL	1.15	BC	0.76	Vert(CT)	-0.29	2-11	>900	180		
BCLL	0.0	Rep Stress Incr	YES	WB	0.44	Horz(CT)	0.06	8	n/a	n/a		
BCDL	10.0	Code	IRC2018/TPI2014	Matrix-S							Weight: 88 lb	FT = 20%

#### LUMBER

TOP CHORD 2x4 SP No.2  
BOT CHORD 2x4 SP No.2  
WEBS 2x3 SPF No.2 \*Except\* 8-6:2x4 SP No.2

#### BRACING

TOP CHORD Structural wood sheathing directly applied or 3-4-11 oc purlins, except end verticals.  
BOT CHORD Rigid ceiling directly applied or 8-2-11 oc bracing.

WEBS 1 Row at midpt 5-8

REACTIONS (size) 2=0-5-8, 8=0-3-8  
Max Horiz 2=75 (LC 12)  
Max Uplift 2=-225 (LC 8), 8=-215 (LC 9)  
Max Grav 2=1053 (LC 1), 8=1046 (LC 1)

FORCES (lb) - Maximum Compression/Maximum Tension

TOP CHORD 1-2=0/6, 2-3=-2132/579, 3-4=-1814/486,  
4-5=-1682/466, 5-6=-421/147, 6-7=0/23,  
6-8=-357/228

BOT CHORD 2-11=-500/1935, 9-11=-264/1312,  
8-9=-426/1693

WEBS 3-11=-409/241, 4-11=-92/566, 4-9=-61/401,  
5-9=-270/198, 5-8=-1478/436

#### NOTES

- Unbalanced roof live loads have been considered for this design.
- Wind: ASCE 7-16; Vult=115mph (3-second gust)  
Vasd=91mph; TCDL=6.0psf; BCDL=6.0psf; h=35ft;  
Ke=1.00; Cat. II; Exp C; Enclosed; MWFRS (envelope)  
exterior zone and C-C Exterior(2E) -0-10-8 to 4-1-8,  
Interior (1) 4-1-8 to 11-6-4, Exterior(2R) 11-6-4 to 16-6-4,  
Interior (1) 16-6-4 to 22-11-0 zone; cantilever left and  
right exposed; end vertical left and right exposed; C-C  
for members and forces & MWFRS for reactions shown;  
Lumber DOL=1.60 plate grip DOL=1.60
- This truss has been designed for a 10.0 psf bottom  
chord live load nonconcurrent with any other live loads.

- All bearings are assumed to be SP No.2 crushing  
capacity of 565 psi.
- Provide mechanical connection (by others) of truss to  
bearing plate capable of withstanding 225 lb uplift at  
joint 2 and 215 lb uplift at joint 8.
- This truss is designed in accordance with the 2018  
International Residential Code sections R502.11.1 and  
R802.10.2 and referenced standard ANSI/TPI 1.

LOAD CASE(S) Standard



August 6, 2024

**WARNING - Verify design parameters and READ NOTES ON THIS AND INCLUDED MITEK REFERENCE PAGE MII-7473 rev. 1/2/2023 BEFORE USE.**

Design valid for use only with MiTek® connectors. This design is based only upon parameters shown, and is for an individual building component, not a truss system. Before use, the building designer must verify the applicability of the design parameters and properly incorporate this design into the overall building design. Bracing indicated is to prevent buckling of individual truss web and/or chord members only. Additional temporary and permanent bracing is always required for stability and to prevent collapse with possible personal injury and property damage. For general guidance regarding the fabrication, storage, delivery, erection and bracing of trusses and truss systems, see **ANSI/TPI1 Quality Criteria, and DSB-22** available from Truss Plate Institute (www.tpinst.org) and **BCSI Building Component Safety Information** available from the Structural Building Component Association (www.sbcsccomponents.com)

**MiTek®**

16023 Swingley Ridge Rd.  
Chesterfield, MO 63017  
314.434.1200 / MiTek-US.com

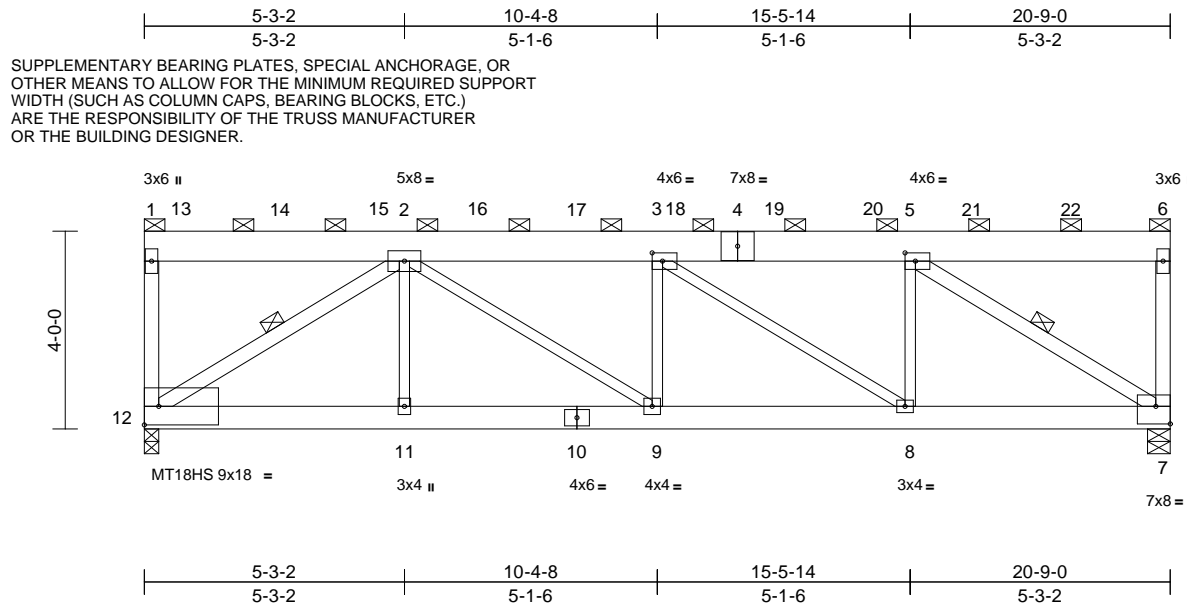
Job	Truss	Truss Type	Qty	Ply	Roof - HM Lot 177
P241265-01	R1	Flat Girder	1	<b>2</b>	Job Reference (optional)

Premier Building Supply (Springhill, KS), Spring Hills, KS - 66083.

Run: 8.63 S Jul 12 2024 Print: 8.630 S Jul 12 2024 MiTek Industries, Inc. Mon Aug 05 16:48:18 Page: 1

ID:X3j9csSdTd?hyQgxh8rn6OzwvzW-RfC?PsB70Hq3NSgPqnL8w3ulTXbGkWrCDoi7J4zJC?

Page: 1



Scale = 1:46.6

Plate Offsets (X, Y): [3:0-2-8,0-2-0], [5:0-2-8,0-2-0], [7:Edge,0-4-4]

<b>Loading</b>	(psf)	<b>Spacing</b>	2-0-0	<b>CSI</b>		<b>DEFL</b>	in	(loc)	I/defl	L/d	<b>PLATES</b>	<b>GRIP</b>
TCLL (roof)	25.0	Plate Grip DOL	1.15	TC	0.42	Vert(LL)	-0.11	9	>999	240	MT18HS	197/144
TCDL	10.0	Lumber DOL	1.15	BC	0.85	Vert(CT)	-0.20	9	>999	180	MT20	197/144
BCLL	0.0	Rep Stress Incr	NO	WB	0.62	Horz(CT)	0.07	7	n/a	n/a		
BCDL	10.0	Code	IRC2018/TPI2014	Matrix-S							Weight: 257 lb	FT = 20%

**LUMBER**

TOP CHORD	2x8 SPF No.2
BOT CHORD	2x6 SPF No.2
WEBS	2x3 SPF No.2 *Except* 12-1,5-7,12-2:2x4 SP No.2
OTHERS	2x4 SP No.2

## BRACING

TOP CHORD	2-0-0 oc purlins (5-10-6 max.): 1-6, except end verticals.	
BOT CHORD	Rigid ceiling directly applied or 10-0-0 oc bracing.	
WEBS	1 Row at midpt	5-7, 2-12

## REACTIONS

Max Uplift 7=-1154 (LC 8), 12=-1281 (LC 8)  
Max Grav 7=5155 (LC 1), 12=5719 (LC 1)

## FORCES

Tension

TOP CHORD 1-12=-1320/361, 1-2=-76/18,  
2-3=-8293/2099, 3-5=-6403/1622,  
5-6=-72/17, 6-7=-768/252

BOT CHORD 11-12=-1628/6426, 9-11=-1628/6426,  
8-9=-2099/8293, 7-8=-1622/6403

WEBS 5-7=-7649/1939, 2-11=0/188,  
2-12=-7674/1945, 2-9=-570/2256,  
3-9=-1153/373, 3-8=-2284/577,  
5-8=-239/1336

## NOTES

- 1) 2-ply truss to be connected together with 10d (0.131"x3") nails as follows:  
Top chords connected as follows: 2x4 - 1 row at 0-9-0 oc, 2x8 - 2 rows staggered at 0-9-0 oc.  
Bottom chords connected as follows: 2x6 - 2 rows staggered at 0-9-0 oc.  
Web connected as follows: 2x4 - 1 row at 0-9-0 oc, 2x3 - 1 row at 0-9-0 oc.

- 2) All loads are considered equally applied to all plies, except if noted as front (F) or back (B) face in the LOAD CASE(S) section. Ply to ply connections have been provided to distribute only loads noted as (F) or (B), unless otherwise indicated.
- 3) Wind: ASCE 7-16; Vult=115mph (3-second gust) Vasd=91mph; TCdL=6.0psf; BCdL=6.0psf; h=35ft; Ke=1.00; Cat. II; Exp C; Enclosed; MWFRS (envelope) exterior zone and C-C Corner (3) zone; cantilever left and right exposed ;C-C for members and forces & MWFRS for reactions shown; Lumber DOL=1.60 plate grip DOL=1.60
- 4) Provide adequate drainage to prevent water ponding.
- 5) All plates are MT20 plates unless otherwise indicated.
- 6) This truss has been designed for a 10.0 psf bottom chord live load nonconcurrent with any other live loads.
- 7) WARNING: Required bearing size at joint(s) 12 greater than input bearing size.
- 8) All bearings are assumed to be SPF No.2 crushing capacity of 425 psi.
- 9) Provide mechanical connection (by others) of truss to bearing plate capable of withstanding 1281 lb uplift at joint 12 and 1154 lb uplift at joint 7.
- 10) This truss is designed in accordance with the 2018 International Residential Code sections R502.11.1 and R802.10.2 and referenced standard ANSI/TPI 1.
- 11) Graphical purlin representation does not depict the size or the orientation of the purlin along the top and/or bottom chord.

- 12) Hanger(s) or other connection device(s) shall be provided sufficient to support concentrated load(s) 916 lb down and 206 lb up at 0-9-0, 902 lb down and 203 lb up at 2-9-0, 902 lb down and 203 lb up at 4-9-0, 902 lb down and 203 lb up at 6-9-0, 902 lb down and 203 lb up at 8-9-0, 902 lb down and 203 lb up at 10-9-0, 902 lb down and 203 lb up at 12-9-0, 902 lb down and 203 lb up at 14-9-0, and 902 lb down and 203 lb up at 16-9-0, and 902 lb down and 203 lb up at 18-9-0 on top chord. The design/selection of such connection device(s) is the responsibility of others.

## LOAD CASE(S) Standard

- 1) Dead + Roof Live (balanced): Lumber Increase=1.15,  
Plate Increase=1.15  
Uniform Loads (lb/ft)  
Vert: 1-6=-70, 7-12=-20  
Concentrated Loads (lb)  
Vert: 13=-916, 14=-902, 15=-902, 16=-902, 17=-902,  
18=-902, 19=-902, 20=-902, 21=-902, 22=-902



August 6, 2024



**WARNING – Verify design parameters and READ NOTES on this and INCLUDED MITER KEEF ELEMENT ASL (MKT) 1473 (REV. 1/2/2023) BEFORE USE.** Design valid for use only with MiTek® connectors. This design is based only upon parameters shown, and is for an individual building component, not a truss system. Before use, the building designer must verify the applicability of design parameters and properly incorporate this design into the overall building design. Bracing indicated is to prevent buckling of individual truss web and/or chord members only. Additional temporary and permanent bracing is always required for stability and to prevent collapse with possible personal injury and property damage. For general guidance regarding the fabrication, storage, delivery, erection and bracing of trusses and truss systems, see **ANSI/TP1 Quality Criteria, and DSB-22** available from Truss Plate Institute ([www.tpinst.org](http://www.tpinst.org)) and **BCSI Building Component Safety Information** available from the Structural Building Component Association ([www.sbcsccomponents.com](http://www.sbcsccomponents.com))

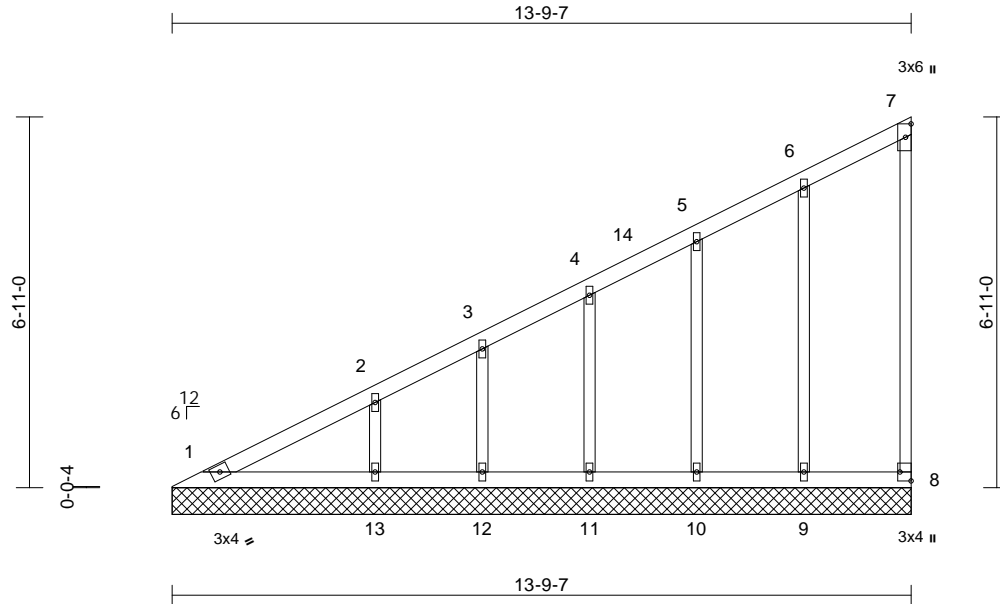
MiTek®

16023 Swingley Ridge Rd.  
Chesterfield, MO 63017  
314.434.1200 / MiTek-US.com

Job	Truss	Truss Type	Qty	Ply	Roof - HM Lot 177
P241265-01	V1	Valley	1	1	Job Reference (optional)

Premier Building Supply (Springhill, KS), Spring Hills, KS - 66083,

Run: 8.63 S Jul 12 2024 Print: 8.630 S Jul 12 2024 MiTek Industries, Inc. Mon Aug 05 16:44:18 Page: 1  
ID:9TR7X\_i7mZkbh6rSI1VQ2DzJtkh-RfC?PsB70Hq3NSgPqnL8w3uITxbGKvRcDOI7Jz4JCpf



Scale = 1:43

Plate Offsets (X, Y): [8:Edge,0-2-8]

<b>Loading</b>	(psf)	<b>Spacing</b>	2-0-0	<b>CSI</b>		<b>DEFL</b>	in	(loc)	l/defl	L/d	<b>PLATES</b>	<b>GRIP</b>
TCLL (roof)	25.0	Plate Grip DOL	1.15	TC	0.55	Vert(LL)	n/a	-	n/a	999	MT20	244/190
TCDL	10.0	Lumber DOL	1.15	BC	0.18	Vert(TL)	n/a	-	n/a	999		
BCLL	0.0	Rep Stress Incr	YES	WB	0.12	Horiz(TL)	0.00	8	n/a	n/a		
BCDL	10.0	Code	IRC2018/TPI2014	Matrix-S							Weight: 61 lb	FT = 20%

## LUMBER

TOP CHORD	2x4 SP No.2
BOT CHORD	2x4 SP No.2
WEBS	2x3 SPF No.2
OTHERS	2x3 SPF No.2

## BRACING

TOP CHORD	Structural wood sheathing directly applied or 6-0-0 oc purlins, except end verticals.
BOT CHORD	Rigid ceiling directly applied or 10-0-0 oc bracing.

**REACTIONS** (size)

(size)	1=13-9-7, 8=13-9-7, 9=13-9-7, 10=13-9-7, 11=13-9-7, 12=13-9-7, 13=13-9-7
Max Horiz	1=292 (LC 9)
Max Uplift	8=38 (LC 9), 9=67 (LC 12), 10=58 (LC 12), 11=65 (LC 12), 12=47 (LC 12), 13=100 (LC 12)
Max Grav	1=156 (LC 20), 8=73 (LC 19), 9=193 (LC 1), 10=176 (LC 1), 11=190 (LC 1), 12=138 (LC 1), 13=294 (LC 1)

## FORCES

	Tension
TOP CHORD	1-2=-441/258, 2-3=-357/213, 3-4=-312/199, 4-5=-254/175, 5-6=-198/158, 6-7=-124/116, 7-8=54/50
BOT CHORD	1-13=-132/143, 12-13=-132/143, 11-12=-132/143, 10-11=-132/143, 9-10=-132/143, 8-9=-132/143
WEBS	6-9=-149/167, 5-10=-138/110, 4-11=-146/104, 3-12=-112/84, 2-13=-219/173

## NOTES

- 1) Wind: ASCE 7-16; Vult=115mph (3-second gust)  
Vasd=91mph; TCDL=6.0psf; BCDL=6.0psf; h=35ft;  
Ke=1.00; Cat. II; Exp C; Enclosed; MWFRS (envelope)  
exterior zone and C-C Exterior(2E) 0-7-9 to 5-9-15,  
Interior (1) 5-9-15 to 13-8-11 zone; cantilever left and  
right exposed ; end vertical left and right exposed; C-C  
for members and forces & MWFRS for reactions shown;  
Lumber DOL=1.60 plate grip DOL=1.60
- 2) Truss designed for wind loads in the plane of the truss  
only. For studs exposed to wind (normal to the face),  
see Standard Industry Gable End Details as applicable,  
or consult qualified building designer as per ANSI/TPI 1.
- 3) All plates are 1.5x4 MT20 unless otherwise indicated.
- 4) Gable requires continuous bottom chord bearing.
- 5) Gable studs spaced at 2-0-0 oc.
- 6) This truss has been designed for a 10.0 psf bottom  
chord live load nonconcurrent with any other live loads.
- 7) All bearings are assumed to be SP No.2 crushing  
capacity of 565 psi.
- 8) Provide mechanical connection (by others) of truss to  
bearing plate capable of withstanding 38 lb uplift at joint  
8, 67 lb uplift at joint 9, 58 lb uplift at joint 10, 65 lb uplift  
at joint 11, 47 lb uplift at joint 12 and 100 lb uplift at joint  
13.
- 9) This truss is designed in accordance with the 2018  
International Residential Code sections R502.11 and  
R802.10.2 and referenced standard ANSI/TPI 1.

LOAD CASE(S) Standard



August 6, 2024



**WARNING – Verify design parameters and READ NOTES ON THIS and INCLUDED MITER KEEF ELEMENTS (see mfk-147316v, 1722023 before use.** Design valid for use only with MiTek® connectors. This design is based only upon parameters shown, and is for an individual building component, not a truss system. Before use, the building designer must verify the applicability of design parameters and properly incorporate this design into the overall building design. Bracing indicated is to prevent buckling of individual truss web and/or chord members only. Additional temporary and permanent bracing is always required for stability and to prevent collapse with possible personal injury and property damage. For general guidance regarding the fabrication, storage, delivery, erection and bracing of trusses and truss systems, see **ANSI/TP1 Quality Criteria, and DSB-22** available from Truss Plate Institute ([www.tpinst.org](http://www.tpinst.org)) and **BCSI Building Component Safety Information** available from the Structural Building Component Association ([www.sbcscomponents.com](http://www.sbcscomponents.com))

MiTek®

16023 Swingley Ridge Rd.  
Chesterfield, MO 63017  
314.434.1200 / MiTek-US.com

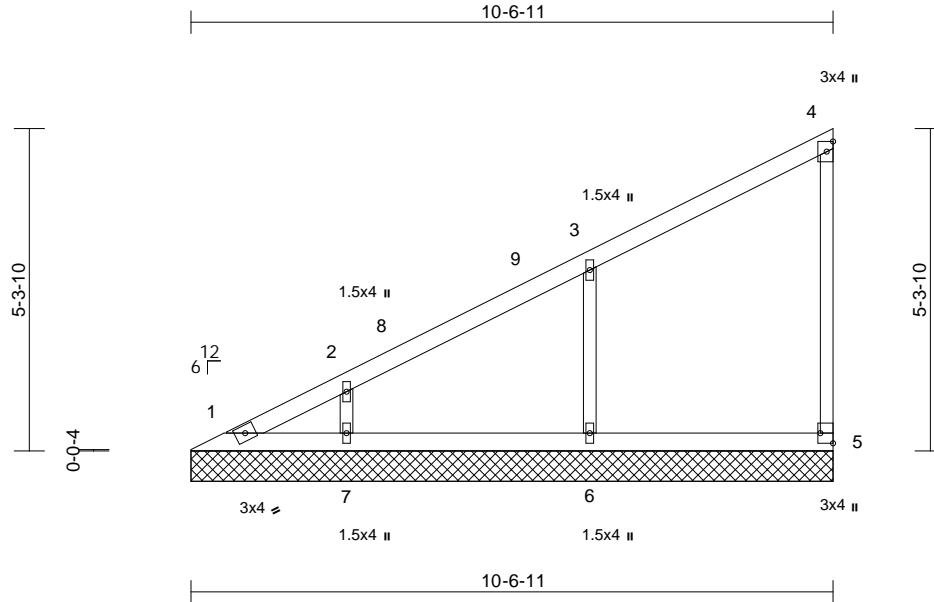
Job	Truss	Truss Type	Qty	Ply	Roof - HM Lot 177
P241265-01	V2	Valley	1	1	Job Reference (optional)

RELEASE FOR CONSTRUCTION  
AS NOTED FOR PLAN REVIEW  
DEVELOPMENT SERVICES  
167343673  
LEE'S SUMMIT, MISSOURI

Premier Building Supply (Springhill, KS), Spring Hills, KS - 66083,

Run: 8.63 S Jul 12 2024 Print: 8.630 S Jul 12 2024 MiTek Industries, Inc. Mon Aug 05 10:44:18  
ID:k9HPTm2vTtVcNGw8ZzmicAzJkT-RfC?PsB70Hq3NSgPqnL8w3uITXbGhWrCDoi7s4zJC7

01/27/2025



Scale = 1:37.9

Plate Offsets (X, Y): [5:Edge,0-2-8]

Loading	(psf)	Spacing	2-0-0	CSI	DEFL	in	(loc)	l/defl	L/d	PLATES	GRIP
TCLL (roof)	25.0	Plate Grip DOL	1.15	TC	0.32	Vert(LL)	n/a	-	n/a	999	MT20
TCDL	10.0	Lumber DOL	1.15	BC	0.13	Vert(TL)	n/a	-	n/a	999	244/190
BCLL	0.0	Rep Stress Incr	YES	WB	0.08	Horiz(TL)	0.00	5	n/a	n/a	
BCDL	10.0	Code	IRC2018/TPI2014	Matrix-S							
										Weight: 39 lb	FT = 20%

#### LUMBER

TOP CHORD	2x4 SP No.2
BOT CHORD	2x4 SP No.2
WEBS	2x3 SPF No.2
OTHERS	2x3 SPF No.2

#### BRACING

TOP CHORD	Structural wood sheathing directly applied or 6-0-0 oc purlins, except end verticals.
BOT CHORD	Rigid ceiling directly applied or 10-0-0 oc bracing.

REACTIONS	(size)	1=10-6-11, 5=10-6-11, 6=10-6-11, 7=10-6-11
	Max Horiz	1=220 (LC 9)
	Max Uplift	5=-37 (LC 9), 6=-137 (LC 12), 7=-101 (LC 12)
	Max Grav	1=88 (LC 20), 5=140 (LC 1), 6=405 (LC 1), 7=296 (LC 1)

#### FORCES

	(lb) - Maximum Compression/Maximum Tension
TOP CHORD	1-2=-377/217, 2-3=-294/184, 3-4=-137/111, 4-5=-108/124
BOT CHORD	1-7=-99/110, 6-7=-99/110, 5-6=-99/110
WEBS	3-6=-315/302, 2-7=-230/225

#### NOTES

- 1) Wind: ASCE 7-16; Vult=115mph (3-second gust) Vasd=91mph; TCDL=6.0psf; BCDL=6.0psf; h=35ft; Ke=1.00; Cat. II; Exp C; Enclosed; MWFRS (envelope) exterior zone and C-C Exterior(2E) 0-7-9 to 5-7-9, Interior (1) 5-7-9 to 10-5-15 zone; cantilever left and right exposed; end vertical left and right exposed; C-C for members and forces & MWFRS for reactions shown; Lumber DOL=1.60 plate grip DOL=1.60
- 2) Truss designed for wind loads in the plane of the truss only. For studs exposed to wind (normal to the face), see Standard Industry Gable End Details as applicable, or consult qualified building designer as per ANSI/TPI 1.
- 3) Gable requires continuous bottom chord bearing.
- 4) Gable studs spaced at 4-0-0 oc.

- 5) This truss has been designed for a 10.0 psf bottom chord live load nonconcurrent with any other live loads.
- 6) All bearings are assumed to be SP No.2 crushing capacity of 565 psi.
- 7) Provide mechanical connection (by others) of truss to bearing plate capable of withstanding 37 lb uplift at joint 5, 137 lb uplift at joint 6 and 101 lb uplift at joint 7.
- 8) This truss is designed in accordance with the 2018 International Residential Code sections R502.11.1 and R802.10.2 and referenced standard ANSI/TPI 1.

LOAD CASE(S) Standard



August 6, 2024

**WARNING - Verify design parameters and READ NOTES ON THIS AND INCLUDED MITEK REFERENCE PAGE MII-7473 rev. 1/2/2023 BEFORE USE.**

Design valid for use only with MiTek® connectors. This design is based only upon parameters shown, and is for an individual building component, not a truss system. Before use, the building designer must verify the applicability of design parameters and properly incorporate this design into the overall building design. Bracing indicated is to prevent buckling of individual truss web and/or chord members only. Additional temporary and permanent bracing is always required for stability and to prevent collapse with possible personal injury and property damage. For general guidance regarding the fabrication, storage, delivery, erection and bracing of trusses and truss systems, see **ANSI/TPI1 Quality Criteria, and DSB-22** available from Truss Plate Institute ([www.tpinst.org](http://www.tpinst.org)) and **BCSI Building Component Safety Information** available from the Structural Building Component Association ([www.sbcsccomponents.com](http://www.sbcsccomponents.com))

**MiTek®**

16023 Swingley Ridge Rd.  
Chesterfield, MO 63017  
314.434.1200 / MiTek-US.com

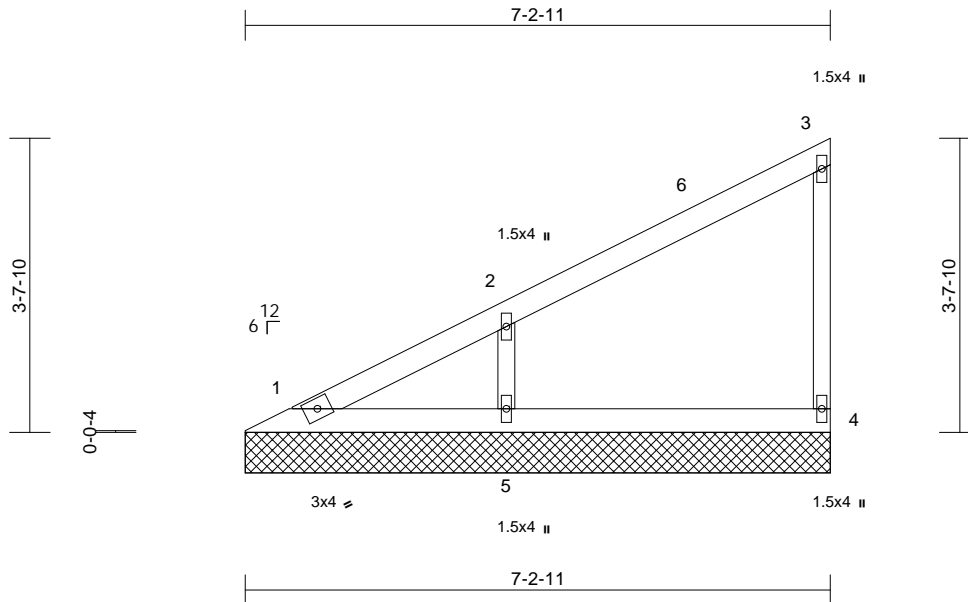
Job	Truss	Truss Type	Qty	Ply	Roof - HM Lot 177
P241265-01	V3	Valley	1	1	Job Reference (optional)

Premier Building Supply (Springhill, KS), Spring Hills, KS - 66083,

Run: 8.63 S Jul 12 2024 Print: 8.630 S Jul 12 2024 MiTek Industries, Inc. Mon Aug 05 10:44:18 AM Page: 1

ID:hYPaUS3A?UIKca3XhOoAhbzJtkR-RfC?PsB70Hq3NSgPqnL8w3ulTXbGLWwCDol7h4zJC7f

01/27/2025



Scale = 1:28.5

Loading	(psf)	Spacing	2-0-0	CSI	DEFL	in	(loc)	l/defl	L/d	PLATES	GRIP
TCLL (roof)	25.0	Plate Grip DOL	1.15	TC	0.23	Vert(LL)	n/a	-	n/a	999	MT20
TCDL	10.0	Lumber DOL	1.15	BC	0.12	Vert(TL)	n/a	-	n/a	999	244/190
BCLL	0.0	Rep Stress Incr	YES	WB	0.08	Horiz(TL)	0.00	4	n/a	n/a	
BCDL	10.0	Code	IRC2018/TPI2014	Matrix-P							Weight: 25 lb FT = 20%

**LUMBER**

TOP CHORD 2x4 SP No.2  
 BOT CHORD 2x4 SP No.2  
 WEBS 2x3 SPF No.2  
 OTHERS 2x3 SPF No.2

**BRACING**

TOP CHORD Structural wood sheathing directly applied or 6-0-0 oc purlins, except end verticals.  
 BOT CHORD Rigid ceiling directly applied or 10-0-0 oc bracing.

**REACTIONS**

(size) 1=7-2-11, 4=7-2-11, 5=7-2-11  
 Max Horiz 1=146 (LC 9)  
 Max Uplift 4=31 (LC 12), 5=128 (LC 12)  
 Max Grav 1=85 (LC 20), 4=141 (LC 1), 5=378 (LC 1)

**FORCES**

(lb) - Maximum Compression/Maximum Tension

TOP CHORD 1-2=-280/164, 2-3=-126/93, 3-4=-111/141  
 BOT CHORD 1-5=-67/73, 4-5=-67/73  
 WEBS 2-5=-294/316

**NOTES**

- 1) Wind: ASCE 7-16; Vult=115mph (3-second gust)  
 Vasd=91mph; TCDL=6.0psf; BCDL=6.0psf; h=35ft;  
 Ke=1.00; Cat. II; Exp C; Enclosed; MWFRS (envelope)  
 exterior zone and C-C Exterior(2E) 0-7-9 to 5-7-9,  
 Interior (1) 5-7-9 to 7-1-15 zone; cantilever left and right  
 exposed; end vertical left and right exposed; C-C for  
 members and forces & MWFRS for reactions shown;  
 Lumber DOL=1.60 plate grip DOL=1.60
- 2) Truss designed for wind loads in the plane of the truss  
 only. For studs exposed to wind (normal to the face),  
 see Standard Industry Gable End Details as applicable,  
 or consult qualified building designer as per ANSI/TPI 1.
- 3) Gable requires continuous bottom chord bearing.
- 4) Gable studs spaced at 4-0-0 oc.
- 5) This truss has been designed for a 10.0 psf bottom  
 chord live load nonconcurrent with any other live loads.
- 6) All bearings are assumed to be SP No.2 crushing  
 capacity of 565 psi.

- 7) Provide mechanical connection (by others) of truss to  
 bearing plate capable of withstanding 31 lb uplift at joint  
 4 and 128 lb uplift at joint 5.
- 8) This truss is designed in accordance with the 2018  
 International Residential Code sections R502.11.1 and  
 R802.10.2 and referenced standard ANSI/TPI 1.

**LOAD CASE(S)** Standard

August 6, 2024

**WARNING - Verify design parameters and READ NOTES ON THIS AND INCLUDED MITEK REFERENCE PAGE MII-7473 rev. 1/2/2023 BEFORE USE.**

Design valid for use only with MiTek® connectors. This design is based only upon parameters shown, and is for an individual building component, not a truss system. Before use, the building designer must verify the applicability of design parameters and properly incorporate this design into the overall building design. Bracing indicated is to prevent buckling of individual truss web and/or chord members only. Additional temporary and permanent bracing is always required for stability and to prevent collapse with possible personal injury and property damage. For general guidance regarding the fabrication, storage, delivery, erection and bracing of trusses and truss systems, see **ANSI/TPI1 Quality Criteria, and DSB-22** available from Truss Plate Institute (www.tpinst.org) and **BCSI Building Component Safety Information** available from the Structural Building Component Association (www.sbcsccomponents.com)

**MiTek®**  
 16023 Swingley Ridge Rd.  
 Chesterfield, MO 63017  
 314.434.1200 / MiTek-US.com

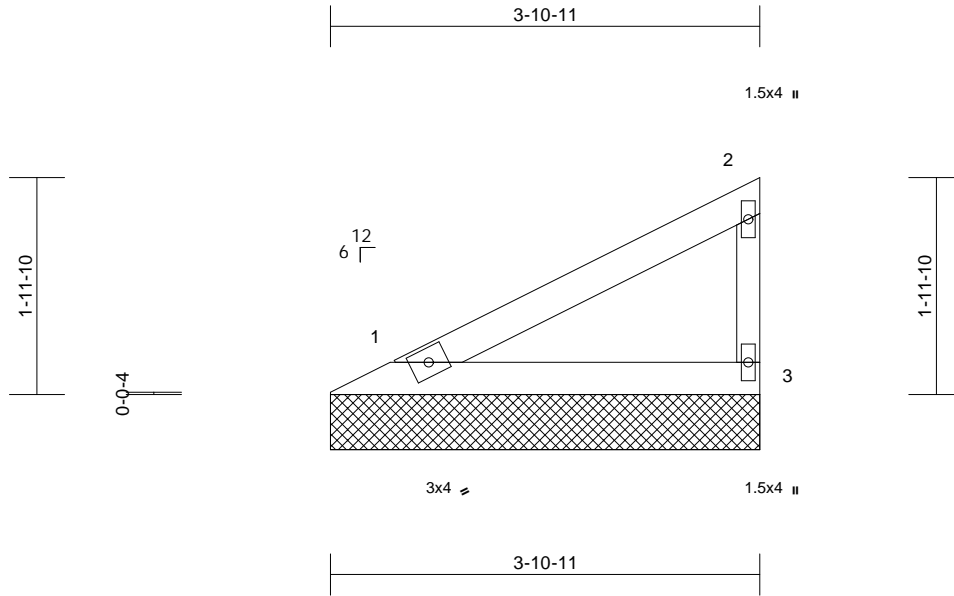
Job	Truss	Truss Type	Qty	Ply	Roof - HM Lot 177	RELEASE FOR CONSTRUCTION AS NOTED FOR PLAN REVIEW DEVELOPMENT SERVICES 167343675 LEE'S SUMMIT, MISSOURI
P241265-01	V4	Valley	1	1	Job Reference (optional)	

Premier Building Supply (Springhill, KS), Spring Hills, KS - 66083,

Run: 8.63 S Jul 12 2024 Print: 8.630 S Jul 12 2024 MiTek Industries, Inc. Mon Aug 05 10:44:18 AM Page: 1

ID:9kzY5o4omouBEjeJF6JPEpzJtkQ-RfC?PsB70Hq3NSgPqnL8w3ulTXbGKWrCDoi7J4ZJC#f

01/27/2025



Scale = 1:20.9

Loading	(psf)	Spacing	2-0-0	CSI	DEFL	in	(loc)	l/defl	L/d	PLATES	GRIP
TCLL (roof)	25.0	Plate Grip DOL	1.15	TC	0.22	Vert(LL)	n/a	-	n/a	999	MT20
TCDL	10.0	Lumber DOL	1.15	BC	0.12	Vert(TL)	n/a	-	n/a	999	244/190
BCLL	0.0	Rep Stress Incr	YES	WB	0.00	Horiz(TL)	0.00	3	n/a	n/a	
BCDL	10.0	Code	IRC2018/TPI2014	Matrix-P							Weight: 12 lb FT = 20%

#### LUMBER

TOP CHORD 2x4 SP No.2  
BOT CHORD 2x4 SP No.2  
WEBS 2x3 SPF No.2

8) This truss is designed in accordance with the 2018 International Residential Code sections R502.11.1 and R802.10.2 and referenced standard ANSI/TPI 1.

LOAD CASE(S) Standard

#### BRACING

TOP CHORD Structural wood sheathing directly applied or 3-11-3 oc purlins, except end verticals.  
BOT CHORD Rigid ceiling directly applied or 10-0-0 oc bracing.

#### REACTIONS (size)

1=3-10-11, 3=3-10-11  
Max Horiz 1=71 (LC 9)  
Max Uplift 1=-22 (LC 12), 3=-40 (LC 12)  
Max Grav 1=144 (LC 1), 3=144 (LC 1)

#### FORCES (lb) - Maximum Compression/Maximum Tension

TOP CHORD 1-2=-101/68, 2-3=-112/145  
BOT CHORD 1-3=-33/36

#### NOTES

- Wind: ASCE 7-16; Vult=115mph (3-second gust)  
Vasd=91mph; TCDL=6.0psf; BCDL=6.0psf; h=35ft;  
Ke=1.00; Cat. II; Exp C; Enclosed; MWFRS (envelope)  
exterior zone and C-C Exterior(2E) zone; cantilever left  
and right exposed; end vertical left and right  
exposed; C-C for members and forces & MWFRS for  
reactions shown; Lumber DOL=1.60 plate grip  
DOL=1.60
- Truss designed for wind loads in the plane of the truss  
only. For studs exposed to wind (normal to the face),  
see Standard Industry Gable End Details as applicable,  
or consult qualified building designer as per ANSI/TPI 1.
- Gable requires continuous bottom chord bearing.
- Gable studs spaced at 4-0-0 oc.
- This truss has been designed for a 10.0 psf bottom  
chord live load nonconcurrent with any other live loads.
- All bearings are assumed to be SP No.2 crushing  
capacity of 565 psi.
- Provide mechanical connection (by others) of truss to  
bearing plate capable of withstanding 22 lb uplift at joint  
1 and 40 lb uplift at joint 3.



August 6, 2024

**WARNING - Verify design parameters and READ NOTES ON THIS AND INCLUDED MITEK REFERENCE PAGE MII-7473 rev. 1/2/2023 BEFORE USE.**

Design valid for use only with MiTek® connectors. This design is based only upon parameters shown, and is for an individual building component, not a truss system. Before use, the building designer must verify the applicability of design parameters and properly incorporate this design into the overall building design. Bracing indicated is to prevent buckling of individual truss web and/or chord members only. Additional temporary and permanent bracing is always required for stability and to prevent collapse with possible personal injury and property damage. For general guidance regarding the fabrication, storage, delivery, erection and bracing of trusses and truss systems, see **ANSI/TPI1 Quality Criteria, and DSB-22** available from Truss Plate Institute ([www.tpinst.org](http://www.tpinst.org)) and **BCSI Building Component Safety Information** available from the Structural Building Component Association ([www.sbcsccomponents.com](http://www.sbcsccomponents.com))

**MiTek®**

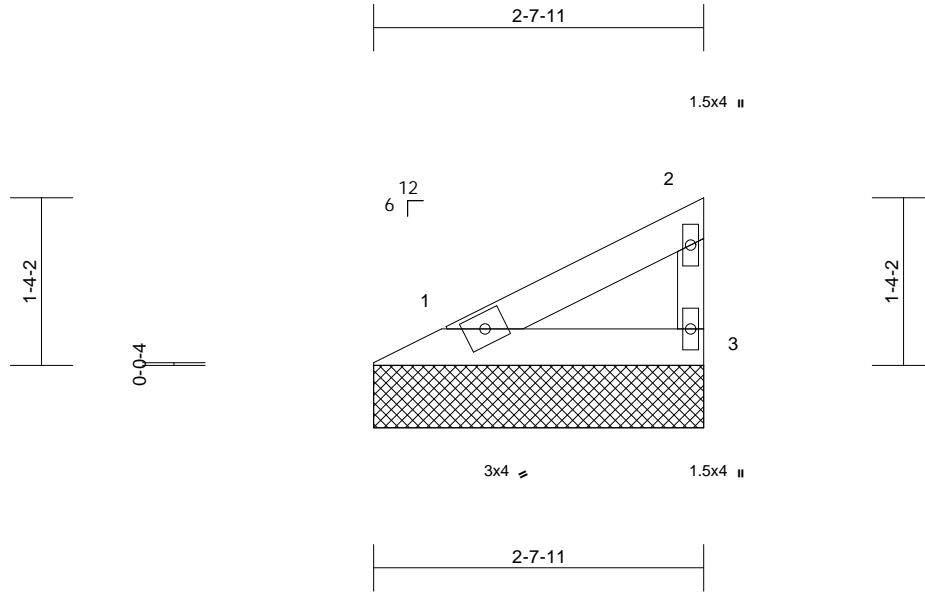
16023 Swingley Ridge Rd.  
Chesterfield, MO 63017  
314.434.1200 / MiTek-US.com

Job	Truss	Truss Type	Qty	Ply	Roof - HM Lot 177	RELEASE FOR CONSTRUCTION AS NOTED FOR PLAN REVIEW DEVELOPMENT SERVICES 167343676 LEE'S SUMMIT, MISSOURI
P241265-01	V7	Valley	1	1	Job Reference (optional)	

Premier Building Supply (Springhill, KS), Spring Hills, KS - 66083,

Run: 8.63 S Jul 12 2024 Print: 8.630 S Jul 12 2024 MiTek Industries, Inc. Mon Aug 05 10:44:18 AM Page: 1  
ID:X3j9csSdTd?hyQgxh8rn6OzwvzW-RfC?PsB70Hq3NSgPqnL8w3uITXbGKWrCDoi734zJC?

01/27/2025



Scale = 1:18.4

Loading	(psf)	Spacing	2-0-0	CSI		DEFL	in	(loc)	l/defl	L/d	PLATES	GRIP
TCLL (roof)	25.0	Plate Grip DOL	1.15	TC	0.07	Vert(LL)	n/a	-	n/a	999	MT20	244/190
TCDL	10.0	Lumber DOL	1.15	BC	0.04	Vert(TL)	n/a	-	n/a	999		
BCLL	0.0	Rep Stress Incr	YES	WB	0.00	Horiz(TL)	n/a	-	n/a	n/a		
BCDL	10.0	Code	IRC2018/TPI2014	Matrix-P							Weight: 8 lb	FT = 20%

#### LUMBER

TOP CHORD 2x4 SP No.2  
BOT CHORD 2x4 SP No.2  
WEBS 2x3 SPF No.2

8) This truss is designed in accordance with the 2018 International Residential Code sections R502.11.1 and R802.10.2 and referenced standard ANSI/TPI 1.

LOAD CASE(S) Standard

#### BRACING

TOP CHORD Structural wood sheathing directly applied or 2-8-3 oc purlins, except end verticals.  
BOT CHORD Rigid ceiling directly applied or 10-0-0 oc bracing.

REACTIONS (size) 1=2-7-11, 3=2-7-11

Max Horiz 1=43 (LC 12)  
Max Uplift 1=-8 (LC 12), 3=-30 (LC 12)  
Max Grav 1=88 (LC 1), 3=88 (LC 1)

FORCES (lb) - Maximum Compression/Maximum Tension

TOP CHORD 1-2=-46/25, 2-3=-68/81  
BOT CHORD 1-3=0/0

#### NOTES

- Wind: ASCE 7-16; Vult=115mph (3-second gust)  
Vasd=91mph; TCDL=6.0psf; BCDL=6.0psf; h=35ft;  
Ke=1.00; Cat. II; Exp C; Enclosed; MWFRS (envelope)  
exterior zone and C-C Exterior(2E) zone; cantilever left  
and right exposed; end vertical left exposed; C-C for  
members and forces & MWFRS for reactions shown;  
Lumber DOL=1.60 plate grip DOL=1.60
- Truss designed for wind loads in the plane of the truss  
only. For studs exposed to wind (normal to the face),  
see Standard Industry Gable End Details as applicable,  
or consult qualified building designer as per ANSI/TPI 1.
- Gable requires continuous bottom chord bearing.
- Gable studs spaced at 4-0-0 oc.
- This truss has been designed for a 10.0 psf bottom  
chord live load nonconcurrent with any other live loads.
- All bearings are assumed to be SP No.2 crushing  
capacity of 565 psi.
- Provide mechanical connection (by others) of truss to  
bearing plate capable of withstanding 8 lb uplift at joint 1  
and 30 lb uplift at joint 3.



August 6, 2024

**WARNING - Verify design parameters and READ NOTES ON THIS AND INCLUDED MITEK REFERENCE PAGE MII-7473 rev. 1/2/2023 BEFORE USE.**

Design valid for use only with MiTek® connectors. This design is based only upon parameters shown, and is for an individual building component, not a truss system. Before use, the building designer must verify the applicability of design parameters and properly incorporate this design into the overall building design. Bracing indicated is to prevent buckling of individual truss web and/or chord members only. Additional temporary and permanent bracing is always required for stability and to prevent collapse with possible personal injury and property damage. For general guidance regarding the fabrication, storage, delivery, erection and bracing of trusses and truss systems, see **ANSI/TPI1 Quality Criteria, and DSB-22** available from Truss Plate Institute ([www.tpinst.org](http://www.tpinst.org)) and **BCSI Building Component Safety Information** available from the Structural Building Component Association ([www.sbcsccomponents.com](http://www.sbcsccomponents.com))

**MiTek®**

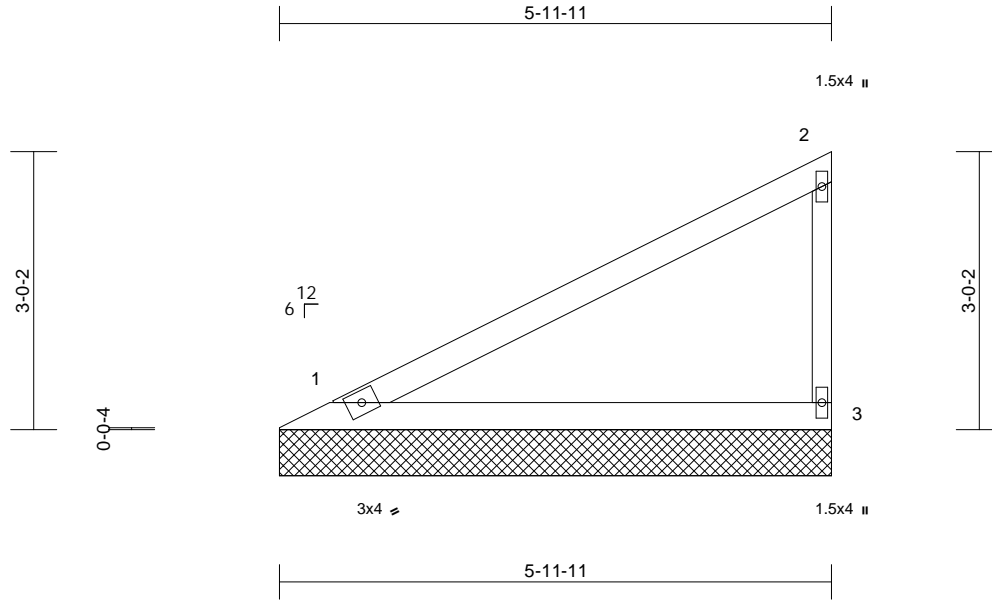
16023 Swingley Ridge Rd.  
Chesterfield, MO 63017  
314.434.1200 / MiTek-US.com

Job	Truss	Truss Type	Qty	Ply	Roof - HM Lot 177
P241265-01	V8	Valley	1	1	Job Reference (optional)

Premier Building Supply (Springhill, KS), Spring Hills, KS - 66083,

Run: 8.63 S Jul 12 2024 Print: 8.630 S Jul 12 2024 MiTek Industries, Inc. Mon Aug 05 10:44:18 AM Page: 1  
ID:X3j9csSdTd?hyQgxh8rn6OzwvzW-RfC?PsB70Hq3NSgPqnL8w3uITXbGKWrCDoi734zJC?

01/27/2025



Scale = 1:24.9

Loading	(psf)	Spacing	2-0-0	CSI	DEFL	in	(loc)	l/defl	L/d	PLATES	GRIP
TCLL (roof)	25.0	Plate Grip DOL	1.15	TC	0.65	Vert(LL)	n/a	-	n/a	999	MT20
TCDL	10.0	Lumber DOL	1.15	BC	0.35	Vert(TL)	n/a	-	n/a	999	244/190
BCLL	0.0	Rep Stress Incr	YES	WB	0.00	Horiz(TL)	n/a	-	n/a	n/a	
BCDL	10.0	Code	IRC2018/TPI2014	Matrix-P							Weight: 20 lb FT = 20%

#### LUMBER

TOP CHORD 2x4 SP No.2  
BOT CHORD 2x4 SP No.2  
WEBS 2x3 SPF No.2

8) This truss is designed in accordance with the 2018 International Residential Code sections R502.11.1 and R802.10.2 and referenced standard ANSI/TPI 1.

LOAD CASE(S) Standard

#### BRACING

TOP CHORD Structural wood sheathing directly applied or 6-0-3 oc purlins, except end verticals.  
BOT CHORD Rigid ceiling directly applied or 10-0-0 oc bracing.

#### REACTIONS (size) 1=5-11-11, 3=5-11-11

Max Horiz 1=116 (LC 12)  
Max Uplift 1=23 (LC 12), 3=81 (LC 12)  
Max Grav 1=238 (LC 1), 3=238 (LC 1)

#### FORCES (lb) - Maximum Compression/Maximum Tension

TOP CHORD 1-2=-121/66, 2-3=-185/213  
BOT CHORD 1-3=0/0

#### NOTES

- Wind: ASCE 7-16; Vult=115mph (3-second gust)  
Vasd=91mph; TCDL=6.0psf; BCDL=6.0psf; h=35ft;  
Ke=1.00; Cat. II; Exp C; Enclosed; MWFRS (envelope)  
exterior zone and C-C Exterior(2E) zone; cantilever left  
and right exposed; end vertical left exposed; C-C for  
members and forces & MWFRS for reactions shown;  
Lumber DOL=1.60 plate grip DOL=1.60
- Truss designed for wind loads in the plane of the truss  
only. For studs exposed to wind (normal to the face),  
see Standard Industry Gable End Details as applicable,  
or consult qualified building designer as per ANSI/TPI 1.
- Gable requires continuous bottom chord bearing.
- Gable studs spaced at 4-0-0 oc.
- This truss has been designed for a 10.0 psf bottom  
chord live load nonconcurrent with any other live loads.
- All bearings are assumed to be SP No.2 crushing  
capacity of 565 psi.
- Provide mechanical connection (by others) of truss to  
bearing plate capable of withstanding 23 lb uplift at joint  
1 and 81 lb uplift at joint 3.



August 6, 2024

**WARNING - Verify design parameters and READ NOTES ON THIS AND INCLUDED MITEK REFERENCE PAGE MII-7473 rev. 1/2/2023 BEFORE USE.**

Design valid for use only with MiTek® connectors. This design is based only upon parameters shown, and is for an individual building component, not a truss system. Before use, the building designer must verify the applicability of design parameters and properly incorporate this design into the overall building design. Bracing indicated is to prevent buckling of individual truss web and/or chord members only. Additional temporary and permanent bracing is always required for stability and to prevent collapse with possible personal injury and property damage. For general guidance regarding the fabrication, storage, delivery, erection and bracing of trusses and truss systems, see **ANSI/TPI1 Quality Criteria, and DSB-22** available from Truss Plate Institute ([www.tpinst.org](http://www.tpinst.org)) and **BCSI Building Component Safety Information** available from the Structural Building Component Association ([www.sbcsccomponents.com](http://www.sbcsccomponents.com))

**MiTek®**

16023 Swingley Ridge Rd.  
Chesterfield, MO 63017  
314.434.1200 / MiTek-US.com

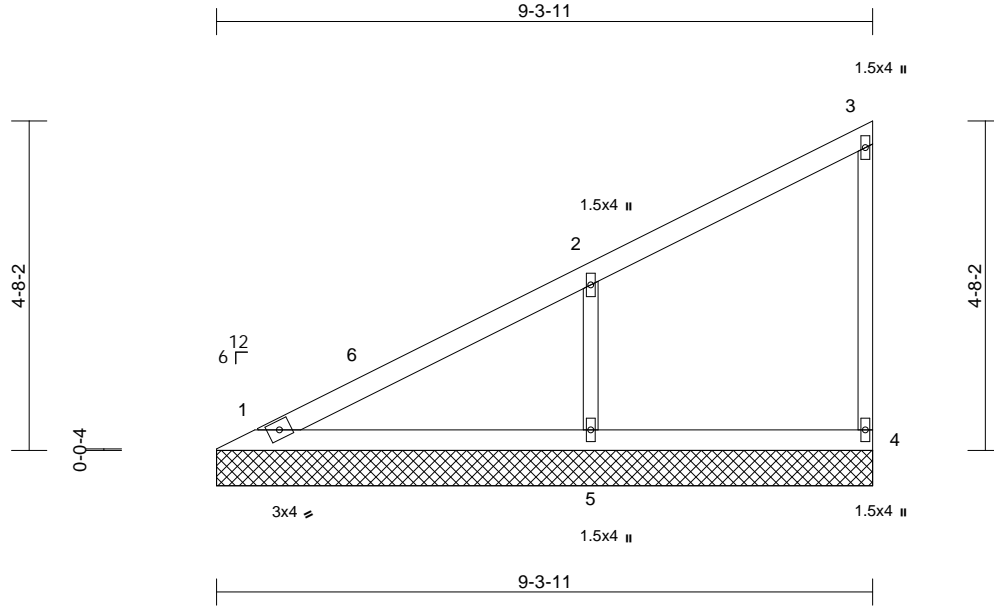
Job	Truss	Truss Type	Qty	Ply	Roof - HM Lot 177
P241265-01	V9	Valley	1	1	Job Reference (optional)

RELEASE FOR CONSTRUCTION  
AS NOTED FOR PLAN REVIEW  
DEVELOPMENT SERVICES  
167343678  
LEE'S SUMMIT, MISSOURI

Premier Building Supply (Springhill, KS), Spring Hills, KS - 66083,

Run: 8.63 S Jul 12 2024 Print: 8.630 S Jul 12 2024 MiTek Industries, Inc. Mon Aug 05 10:44:18  
ID:X3j9csSdTd?hyQgxh8rn6OzwvzW-RfC?PsB70Hq3NSgPqnL8w3uITXbGKWrCDoi734zJC??

01/27/2025



Scale = 1:32.7

Loading	(psf)	Spacing	2-0-0	CSI		DEFL	in	(loc)	l/defl	L/d	PLATES	GRIP
TCLL (roof)	25.0	Plate Grip DOL	1.15	TC	0.34	Vert(LL)	n/a	-	n/a	999	MT20	244/190
TCDL	10.0	Lumber DOL	1.15	BC	0.18	Vert(TL)	n/a	-	n/a	999		
BCLL	0.0	Rep Stress Incr	YES	WB	0.08	Horiz(TL)	0.00	4	n/a	n/a		
BCDL	10.0	Code	IRC2018/TPI2014	Matrix-S							Weight: 33 lb	FT = 20%

#### LUMBER

TOP CHORD 2x4 SP No.2  
BOT CHORD 2x4 SP No.2  
WEBS 2x3 SPF No.2  
OTHERS 2x3 SPF No.2

#### BRACING

TOP CHORD Structural wood sheathing directly applied or 6-0-0 oc purlins, except end verticals.  
BOT CHORD Rigid ceiling directly applied or 10-0-0 oc bracing.

#### REACTIONS

(size) 1=9-3-11, 4=9-3-11, 5=9-3-11  
Max Horiz 1=188 (LC 12)  
Max Uplift 4=-42 (LC 12), 5=-164 (LC 12)  
Max Grav 1=169 (LC 1), 4=123 (LC 1), 5=483 (LC 1)

#### FORCES

(lb) - Maximum Compression/Maximum Tension

TOP CHORD 1-2=-241/113, 2-3=-84/29, 3-4=-97/97  
BOT CHORD 1-5=-2/3, 4-5=-2/3  
WEBS 2-5=-366/342

#### NOTES

- 1) Wind: ASCE 7-16; Vult=115mph (3-second gust)  
Vasd=91mph; TCDL=6.0psf; BCDL=6.0psf; h=35ft;  
Ke=1.00; Cat. II; Exp C; Enclosed; MWFRS (envelope)  
exterior zone and C-C Exterior(2E) 0-7-9 to 5-4-3,  
Interior (1) 5-4-3 to 9-2-15 zone; cantilever left and right  
exposed; end vertical left exposed; C-C for members  
and forces & MWFRS for reactions shown; Lumber  
DOL=1.60 plate grip DOL=1.60
- 2) Truss designed for wind loads in the plane of the truss  
only. For studs exposed to wind (normal to the face),  
see Standard Industry Gable End Details as applicable,  
or consult qualified building designer as per ANSI/TPI 1.
- 3) Gable requires continuous bottom chord bearing.
- 4) Gable studs spaced at 4-0-0 oc.
- 5) This truss has been designed for a 10.0 psf bottom  
chord live load nonconcurrent with any other live loads.
- 6) All bearings are assumed to be SP No.2 crushing  
capacity of 565 psi.

- 7) Provide mechanical connection (by others) of truss to  
bearing plate capable of withstanding 42 lb uplift at joint  
4 and 164 lb uplift at joint 5.
- 8) This truss is designed in accordance with the 2018  
International Residential Code sections R502.11.1 and  
R802.10.2 and referenced standard ANSI/TPI 1.

LOAD CASE(S) Standard



August 6, 2024

**WARNING - Verify design parameters and READ NOTES ON THIS AND INCLUDED MITEK REFERENCE PAGE MII-7473 rev. 1/2/2023 BEFORE USE.**

Design valid for use only with MiTek® connectors. This design is based only upon parameters shown, and is for an individual building component, not a truss system. Before use, the building designer must verify the applicability of design parameters and properly incorporate this design into the overall building design. Bracing indicated is to prevent buckling of individual truss web and/or chord members only. Additional temporary and permanent bracing is always required for stability and to prevent collapse with possible personal injury and property damage. For general guidance regarding the fabrication, storage, delivery, erection and bracing of trusses and truss systems, see **ANSI/TPI1 Quality Criteria, and DSB-22** available from Truss Plate Institute (www.tpinst.org) and **BCSI Building Component Safety Information** available from the Structural Building Component Association (www.sbcsccomponents.com)

**MiTek®**

16023 Swingley Ridge Rd.  
Chesterfield, MO 63017  
314.434.1200 / MiTek-US.com

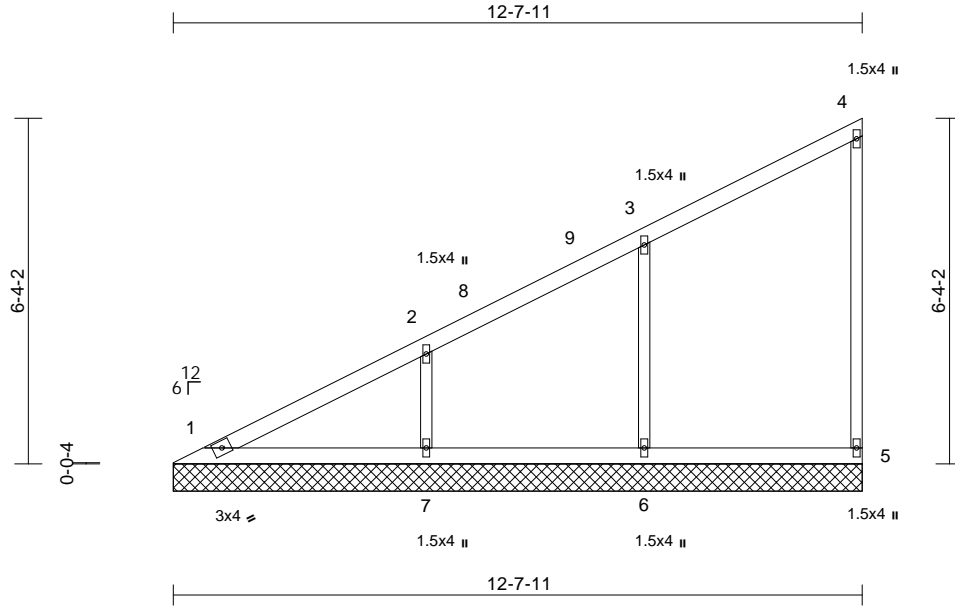
Job	Truss	Truss Type	Qty	Ply	Roof - HM Lot 177	RELEASE FOR CONSTRUCTION AS NOTED FOR PLAN REVIEW DEVELOPMENT SERVICES 167343679 LEE'S SUMMIT, MISSOURI
P241265-01	V10	Valley	1	1	Job Reference (optional)	

Premier Building Supply (Springhill, KS), Spring Hills, KS - 66083,

Run: 8.63 S Jul 12 2024 Print: 8.630 S Jul 12 2024 MiTek Industries, Inc. Mon Aug 05 10:44:19 Page: 1

ID:X3j9csSdTd?hyQgxh8rn6OzwvzW-RfC?PsB70Hq3NSgPqnL8w3uITXbGKWrCDoi734zJC?

01/27/2025



<b>Loading</b>	(psf)	<b>Spacing</b>	2-0-0	<b>CSI</b>		<b>DEFL</b>	in	(loc)	l/defl	L/d	<b>PLATES</b>	<b>GRIP</b>
TCLL (roof)	25.0	Plate Grip DOL	1.15	TC	0.24	Vert(LL)	n/a	-	n/a	999	MT20	244/190
TCDL	10.0	Lumber DOL	1.15	BC	0.13	Vert(TL)	n/a	-	n/a	999		
BCLL	0.0	Rep Stress Incr	YES	WB	0.12	Horiz(TL)	0.00	5	n/a	n/a		
BCDL	10.0	Code	IRC2018/TPI2014	Matrix-S							Weight: 48 lb	FT = 20%

#### LUMBER

TOP CHORD	2x4 SP No.2
BOT CHORD	2x4 SP No.2
WEBS	2x3 SPF No.2
OTHERS	2x3 SPF No.2

#### BRACING

TOP CHORD	Structural wood sheathing directly applied or 6-0-0 oc purlins, except end verticals.
BOT CHORD	Rigid ceiling directly applied or 10-0-0 oc bracing.

<b>REACTIONS</b>	(size)	1=12-7-11, 5=12-7-11, 6=12-7-11, 7=12-7-11
	Max Horiz	1=261 (LC 12)
	Max Uplift	5=-49 (LC 12), 6=-129 (LC 12), 7=-138 (LC 12)
	Max Grav	1=149 (LC 21), 5=144 (LC 1), 6=381 (LC 1), 7=403 (LC 1)

#### FORCES

	(lb) - Maximum Compression/Maximum Tension
TOP CHORD	1-2=-310/137, 2-3=-193/83, 3-4=-81/35, 4-5=-111/94
BOT CHORD	1-7=-2/3, 6-7=-2/3, 5-6=-2/3
WEBS	3-6=-299/245, 2-7=-305/244

#### NOTES

- 1) Wind: ASCE 7-16; Vult=115mph (3-second gust) Vasd=91mph; TCDL=6.0psf; BCDL=6.0psf; h=35ft; Ke=1.00; Cat. II; Exp C; Enclosed; MWFRS (envelope) exterior zone and C-C Exterior(2E) 0-7-9 to 5-7-9, Interior (1) 5-7-9 to 12-6-15 zone; cantilever left and right exposed; end vertical left exposed; C-C for members and forces & MWFRS for reactions shown; Lumber DOL=1.60 plate grip DOL=1.60
- 2) Truss designed for wind loads in the plane of the truss only. For studs exposed to wind (normal to the face), see Standard Industry Gable End Details as applicable, or consult qualified building designer as per ANSI/TPI 1.
- 3) Gable requires continuous bottom chord bearing.
- 4) Gable studs spaced at 4-0-0 oc.

- 5) This truss has been designed for a 10.0 psf bottom chord live load nonconcurrent with any other live loads.
- 6) All bearings are assumed to be SP No.2 crushing capacity of 565 psi.
- 7) Provide mechanical connection (by others) of truss to bearing plate capable of withstanding 49 lb uplift at joint 5, 129 lb uplift at joint 6 and 138 lb uplift at joint 7.
- 8) This truss is designed in accordance with the 2018 International Residential Code sections R502.11.1 and R802.10.2 and referenced standard ANSI/TPI 1.

**LOAD CASE(S)** Standard



August 6, 2024

**WARNING - Verify design parameters and READ NOTES ON THIS AND INCLUDED MITEK REFERENCE PAGE MII-7473 rev. 1/2/2023 BEFORE USE.**

Design valid for use only with MiTek® connectors. This design is based only upon parameters shown, and is for an individual building component, not a truss system. Before use, the building designer must verify the applicability of design parameters and properly incorporate this design into the overall building design. Bracing indicated is to prevent buckling of individual truss web and/or chord members only. Additional temporary and permanent bracing is always required for stability and to prevent collapse with possible personal injury and property damage. For general guidance regarding the fabrication, storage, delivery, erection and bracing of trusses and truss systems, see **ANSI/TPI1 Quality Criteria, and DSB-22** available from Truss Plate Institute ([www.tpinst.org](http://www.tpinst.org)) and **BCSI Building Component Safety Information** available from the Structural Building Component Association ([www.sbcsccomponents.com](http://www.sbcsccomponents.com))

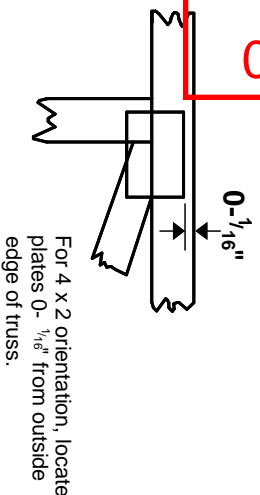
**MiTek®**

16023 Swingley Ridge Rd.  
Chesterfield, MO 63017  
314.434.1200 / MiTek-US.com

Symbols

PLATE LOCATION AND ORIENTATION

Center plate on joint unless x, y offsets are indicated. Dimensions are in ft-in-sixteenths. Apply plates to both sides of truss and fully embed teeth.



This symbol indicates the required direction of slots in connector plates.

\* Plate location details available in MITek software or upon request.

PLATE SIZE

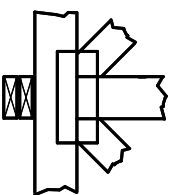
**4 X 4**  
The first dimension is the plate width measured perpendicular to slots. Second dimension is the length parallel to slots.

LATERAL BRACING LOCATION



Indicated by symbol shown and/or by text in the bracing section of the output. Use T or L bracing if indicated.

BEARING

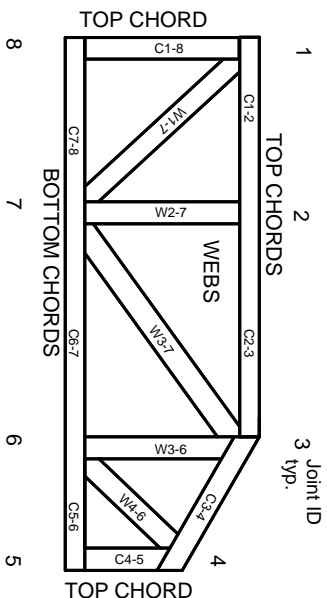


Indicates location where bearings (supports) occur. Icons vary but reaction section indicates joint number/letter where bearings occur. Min size shown is for crushing only.

**Industry Standards:**  
ANSI/TP11: National Design Specification for Metal Plate Connected Wood Truss Construction.  
DSB-22: Design Standard for Bracing.  
BCSI: Building Component Safety Information, Guide to Good Practice for Handling, Installing, Restraining & Bracing of Metal Plate Connected Wood Trusses.

Numbering System

6-4-8 dimensions shown in ft-in-sixteenths (Drawings not to scale)



JOINTS ARE GENERALLY NUMBERED/LETTERED CLOCKWISE AROUND THE TRUSS STARTING AT THE JOINT FARTHEST TO THE LEFT.

CHORDS AND WEBS ARE IDENTIFIED BY END JOINT NUMBERS/LETTERS.

Product Code Approvals

ICC-ES Reports:  
ESR-1988, ESR-2362, ESR-2685, ESR-3282  
ESR-4722, ESL-1388

Design General Notes

Trusses are designed for wind loads in the plane of the truss unless otherwise shown.

Lumber design values are in accordance with ANSI/TP1 1 section 6.3. These truss designs rely on lumber values established by others.

© 2023 MITek® All Rights Reserved



MITek Engineering Reference Sheet: MIL-7473 rev. 1/2/2023

General Safety Notes

Failure to Follow Could Cause Property Damage or Personal Injury

1. Additional stability bracing for truss system, e.g. diagonal or X-bracing, is always required. See BCSI.
2. Truss bracing must be designed by an engineer. For wide truss spacing, individual lateral braces themselves may require bracing, or alternative Tor I bracing should be considered.
3. Never exceed the design loading shown and never stack materials on inadequately braced trusses.
4. Provide copies of this truss design to the building designer, erection supervisor, property owner and all other interested parties.
5. Cut members to bear tightly against each other.
6. Place plates on each face of truss at each joint and embed fully. Knots and wane at joint locations are regulated by ANSI/TP1 1.
7. Design assumes trusses will be suitably protected from the environment in accord with ANSI/TP1 1.
8. Unless otherwise noted, moisture content of lumber shall not exceed 19% at time of fabrication.
9. Unless expressly noted, this design is not applicable for use with fire retardant, preservative treated, or green lumber.
10. Camber is a non-structural consideration and is the responsibility of truss fabricator. General practice is to camber for dead load deflection.
11. Plate type, size, orientation and location dimensions indicated are minimum plating requirements.
12. Lumber used shall be of the species and size, and in all respects, equal to or better than that specified.
13. Top chords must be sheathed or purlins provided at spacing indicated on design.
14. Bottom chords require lateral bracing at 10 ft. spacing, or less, if no ceiling is installed, unless otherwise noted.
15. Connections not shown are the responsibility of others.
16. Do not cut or alter truss member or plate without prior approval of an engineer.
17. Install and load vertically unless indicated otherwise.
18. Use of green or treated lumber may pose unacceptable environmental, health or performance risks. Consult with project engineer before use.
19. Review all portions of this design (front, back, words and pictures) before use. Reviewing pictures alone is not sufficient.
20. Design assumes manufacture in accordance with ANSI/TP1 1 Quality Criteria.
21. The design does not take into account any dynamic or other loads other than those expressly stated.