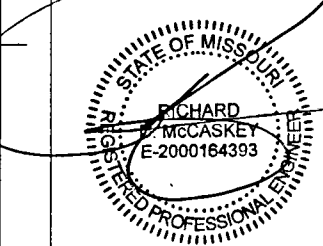


Chick-fil-A
5200 Buffington Road
Atlanta, Georgia
30349-2998

LANE SUPPLY, INC.
120 Fairview
Arlington, TX. 76010
(817) 261-9116

NOTICE: THIS DOCUMENT IS THE PROPERTY OF LANE COMPANY. NEITHER THIS DOCUMENT NOR ANY DATA OR INFORMATION HEREIN SHALL BE COPIED, REPRODUCED, LOANED, EITHER ORAL OR IN WRITING, FOR ANY PURPOSE WHATSOEVER, WITHOUT THE PRIOR WRITTEN PERMISSION OF LANE COMPANY. IF THE DOCUMENT IS LOANED BY OR WITH THE AUTHORITY OF LANE COMPANY, THE BORROWER, IN CONSIDERATION OF SUCH LOAN, AGREES TO THE FOREGOING CONDITIONS AND TO RETURN THIS DOCUMENT ON REQUEST OR UPON COMPLETION OF THE SPECIFICALLY AUTHORIZED WORK FOR WHICH IT WAS USED.

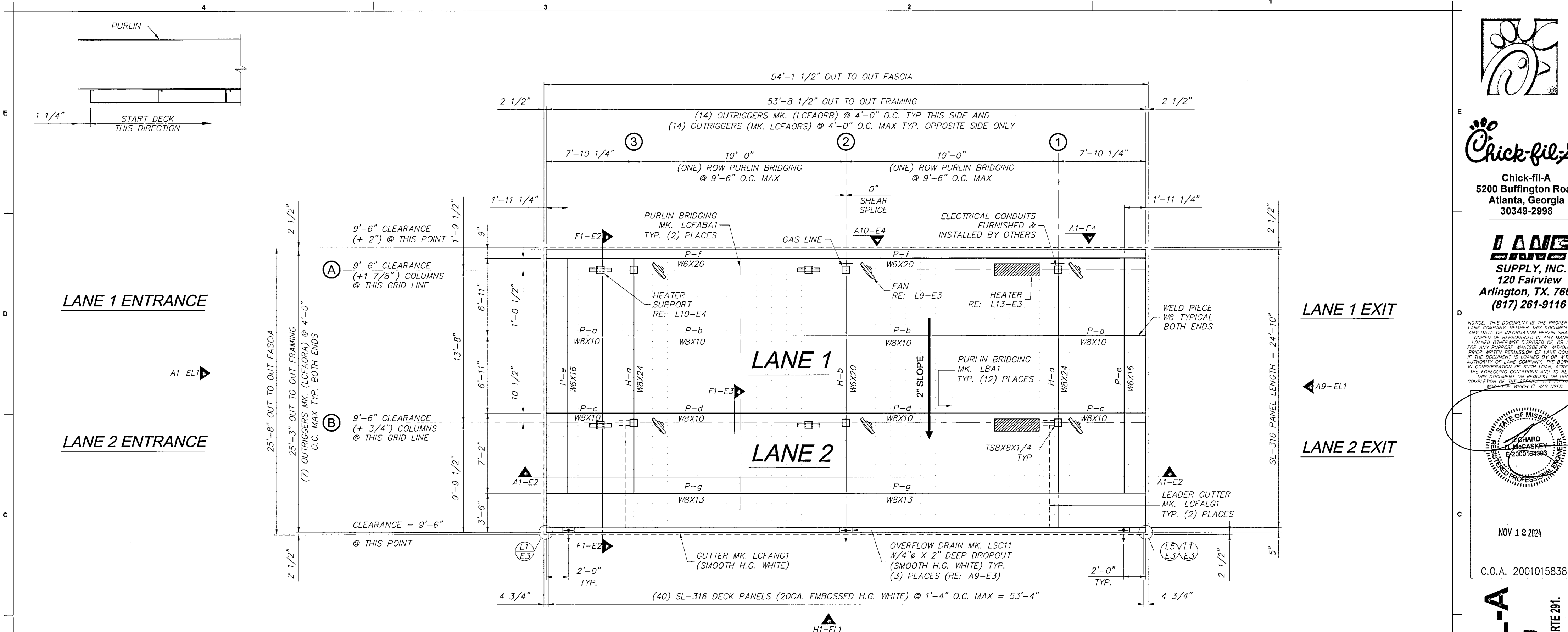


NOV 12 2024
C.O.A. 2001015838

CHICK-FIL-A
OLDHAM VILLAGE FSU
SW CORNER US HWY 50 & MO STATE RTE 291.
LEE'S SUMMIT, MO 64081

FSR# 05248

REVISION SCHEDULE		
NO.	DATE	DESCRIPTION
JOB NO. LSC: 78787		
PRINTED FOR ISSUED FOR PERMIT		
DATE 10/15/2024		
DRAWN BY RED		
Information furnished on this drawing, and in all rights, has been prepared by or for the engineer, and it is not to be reproduced or used in any manner without express written or verbal consent from the authorized project representatives.		
SHEET CANOPY FOOTING LOCATIONS		
SHEET NUMBER		
F2FC-1		
ABI OF 2		



FI		CANOPY FRAMING LAYOUT																																																																																																																																																																																																																																																																																																																																																																																																																																																																																																																																																																																																																																																																																																																																																																																																																																																																																																																																																																																																																																																																																																																																																																																																																																																																																																																																																																																													
----	--	-----------------------	--	--	--	--	--	--	--	--	--	--	--	--	--	--	--	--	--	--	--	--	--	--	--	--	--	--	--	--	--	--	--	--	--	--	--	--	--	--	--	--	--	--	--	--	--	--	--	--	--	--	--	--	--	--	--	--	--	--	--	--	--	--	--	--	--	--	--	--	--	--	--	--	--	--	--	--	--	--	--	--	--	--	--	--	--	--	--	--	--	--	--	--	--	--	--	--	--	--	--	--	--	--	--	--	--	--	--	--	--	--	--	--	--	--	--	--	--	--	--	--	--	--	--	--	--	--	--	--	--	--	--	--	--	--	--	--	--	--	--	--	--	--	--	--	--	--	--	--	--	--	--	--	--	--	--	--	--	--	--	--	--	--	--	--	--	--	--	--	--	--	--	--	--	--	--	--	--	--	--	--	--	--	--	--	--	--	--	--	--	--	--	--	--	--	--	--	--	--	--	--	--	--	--	--	--	--	--	--	--	--	--	--	--	--	--	--	--	--	--	--	--	--	--	--	--	--	--	--	--	--	--	--	--	--	--	--	--	--	--	--	--	--	--	--	--	--	--	--	--	--	--	--	--	--	--	--	--	--	--	--	--	--	--	--	--	--	--	--	--	--	--	--	--	--	--	--	--	--	--	--	--	--	--	--	--	--	--	--	--	--	--	--	--	--	--	--	--	--	--	--	--	--	--	--	--	--	--	--	--	--	--	--	--	--	--	--	--	--	--	--	--	--	--	--	--	--	--	--	--	--	--	--	--	--	--	--	--	--	--	--	--	--	--	--	--	--	--	--	--	--	--	--	--	--	--	--	--	--	--	--	--	--	--	--	--	--	--	--	--	--	--	--	--	--	--	--	--	--	--	--	--	--	--	--	--	--	--	--	--	--	--	--	--	--	--	--	--	--	--	--	--	--	--	--	--	--	--	--	--	--	--	--	--	--	--	--	--	--	--	--	--	--	--	--	--	--	--	--	--	--	--	--	--	--	--	--	--	--	--	--	--	--	--	--	--	--	--	--	--	--	--	--	--	--	--	--	--	--	--	--	--	--	--	--	--	--	--	--	--	--	--	--	--	--	--	--	--	--	--	--	--	--	--	--	--	--	--	--	--	--	--	--	--	--	--	--	--	--	--	--	--	--	--	--	--	--	--	--	--	--	--	--	--	--	--	--	--	--	--	--	--	--	--	--	--	--	--	--	--	--	--	--	--	--	--	--	--	--	--	--	--	--	--	--	--	--	--	--	--	--	--	--	--	--	--	--	--	--	--	--	--	--	--	--	--	--	--	--	--	--	--	--	--	--	--	--	--	--	--	--	--	--	--	--	--	--	--	--	--	--	--	--	--	--	--	--	--	--	--	--	--	--	--	--	--	--	--	--	--	--	--	--	--	--	--	--	--	--	--	--	--	--	--	--	--	--	--	--	--	--	--	--	--	--	--	--	--	--	--	--	--	--	--	--	--	--	--	--	--	--	--	--	--	--	--	--	--	--	--	--	--	--	--	--	--	--	--	--	--	--	--	--	--	--	--	--	--	--	--	--	--	--	--	--	--	--	--	--	--	--	--	--	--	--	--	--	--	--	--	--	--	--	--	--	--	--	--	--	--	--	--	--	--	--	--	--	--	--	--	--	--	--	--	--	--	--	--	--	--	--	--	--	--	--	--	--	--	--	--	--	--	--	--	--	--	--	--	--	--	--	--	--	--	--	--	--	--	--	--	--	--	--	--	--	--	--	--	--	--	--	--	--	--	--	--	--	--	--	--	--	--	--	--	--	--	--	--	--	--	--	--	--	--	--	--	--	--	--	--	--	--	--	--	--	--	--	--	--	--	--	--	--	--	--	--	--	--	--	--	--	--	--	--	--	--	--	--	--	--	--	--	--	--	--	--	--	--	--	--	--	--	--	--	--	--	--	--	--	--	--	--	--	--	--	--	--	--	--	--	--	--	--	--	--	--	--	--	--	--	--	--	--	--	--	--	--	--	--	--	--	--	--	--	--	--	--	--	--	--	--	--	--	--	--	--	--	--	--	--	--	--	--	--	--	--	--	--	--	--	--	--	--	--	--	--	--	--	--	--	--	--	--	--	--	--	--	--	--	--	--	--	--	--	--	--	--	--	--	--	--	--	--	--	--	--	--	--	--	--	--	--	--	--	--	--	--	--	--	--	--	--	--	--	--	--	--	--	--	--	--	--	--	--	--	--	--	--	--	--	--	--	--	--	--	--	--	--	--	--	--	--	--	--	--	--	--	--	--	--	--	--	--	--	--	--	--	--	--	--	--	--	--	--	--	--	--	--	--	--	--	--	--	--	--	--	--	--	--	--	--	--	--	--	--	--	--	--	--	--	--	--	--	--	--	--	--	--	--	--	--	--	--	--	--	--	--	--	--	--	--	--	--	--	--	--	--	--	--	--	--	--	--	--	--	--	--	--	--	--	--	--	--	--	--	--	--	--	--	--	--	--	--	--	--	--	--	--	--	--	--	--	--	--	--	--	--	--	--	--	--	--	--	--	--	--	--	--	--	--	--	--	--	--	--	--	--	--	--	--	--	--	--	--	--	--	--	--	--	--	--	--	--	--	--	--	--	--	--	--	--	--	--	--	--	--	--	--	--	--	--	--	--	--	--	--	--	--	--	--	--	--	--	--	--	--	--	--	--	--	--	--	--	--	--	--	--	--	--	--	--	--	--	--	--	--	--	--	--	--	--	--	--	--	--	--	--	--	--	--	--	--	--	--	--	--	--	--	--	--	--	--	--	--	--	--	--	--	--	--	--	--	--	--	--	--	--	--	--	--	--	--	--	--	--	--	--	--	--	--	--	--	--	--	--	--	--	--	--	--	--	--	--	--	--	--	--	--	--	--	--	--	--	--	--	--	--	--	--	--	--	--	--	--	--	--	--	--	--	--	--	--	--	--	--	--	--	--	--	--	--	--	--	--	--	--	--	--	--	--	--	--	--	--	--	--	--	--	--	--	--	--	--	--	--	--	--	--	--	--	--	--	--	--	--	--	--	--	--	--	--	--

Chick-fil-A
5200 Buffington Road
Atlanta, Georgia
30349-2998

LANE SUPPLY, INC.
120 Fairview
Arlington, TX. 76010
(817) 261-9116

NOTICE: THIS DOCUMENT IS THE PROPERTY OF LANE COMPANY. NEITHER THIS DOCUMENT NOR ANY DATA OR INFORMATION HEREON SHALL BE COPIED OR REPRODUCED IN ANY MANNER, LOANED, OTHERWISE DISPOSED OF, OR USED FOR ANY PURPOSE WHATSOEVER, WITHOUT THE PRIOR WRITTEN PERMISSION OF LANE COMPANY. IF THE DOCUMENT IS LOANED BY OR WITH THE AUTHORITY OF LANE COMPANY, THE BORROWER IN CONSIDERATION OF SUCH LOAN, AGREES TO THE FOREGOING CONDITIONS AND TO RETURN THIS DOCUMENT ON REQUEST OR UPON COMPLETION OF THE PROJECT FOR WHICH IT WAS USED.

STATE OF MISSISSIPPI
RICHARD L. MCCASKEY
E200076493
REGISTERED PROFESSIONAL ENGINEER

NOV 12 2024

C.O.A. 2001015838

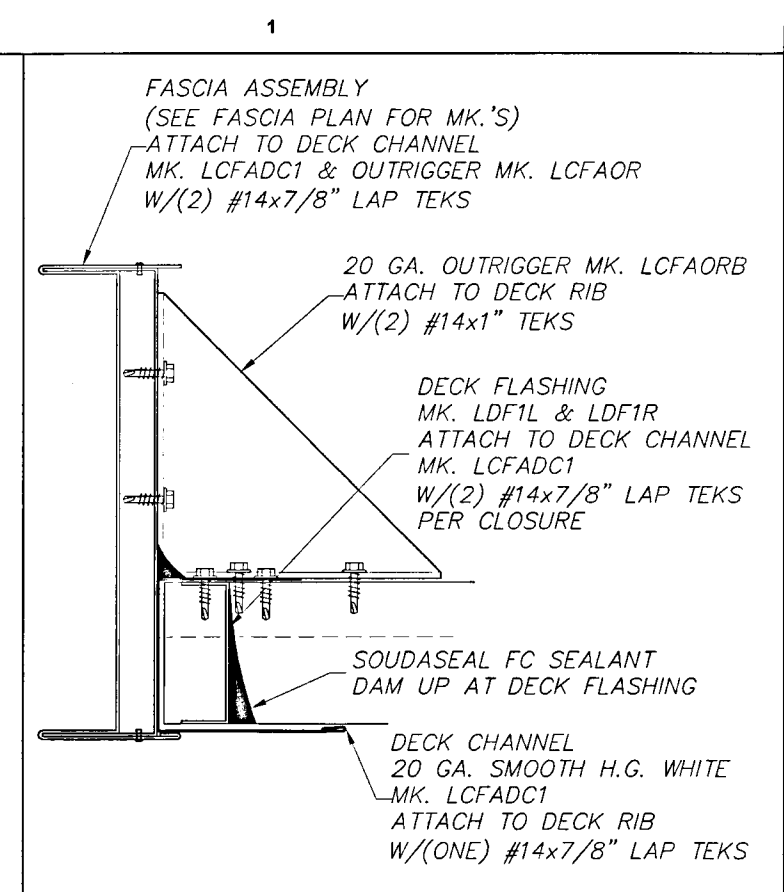
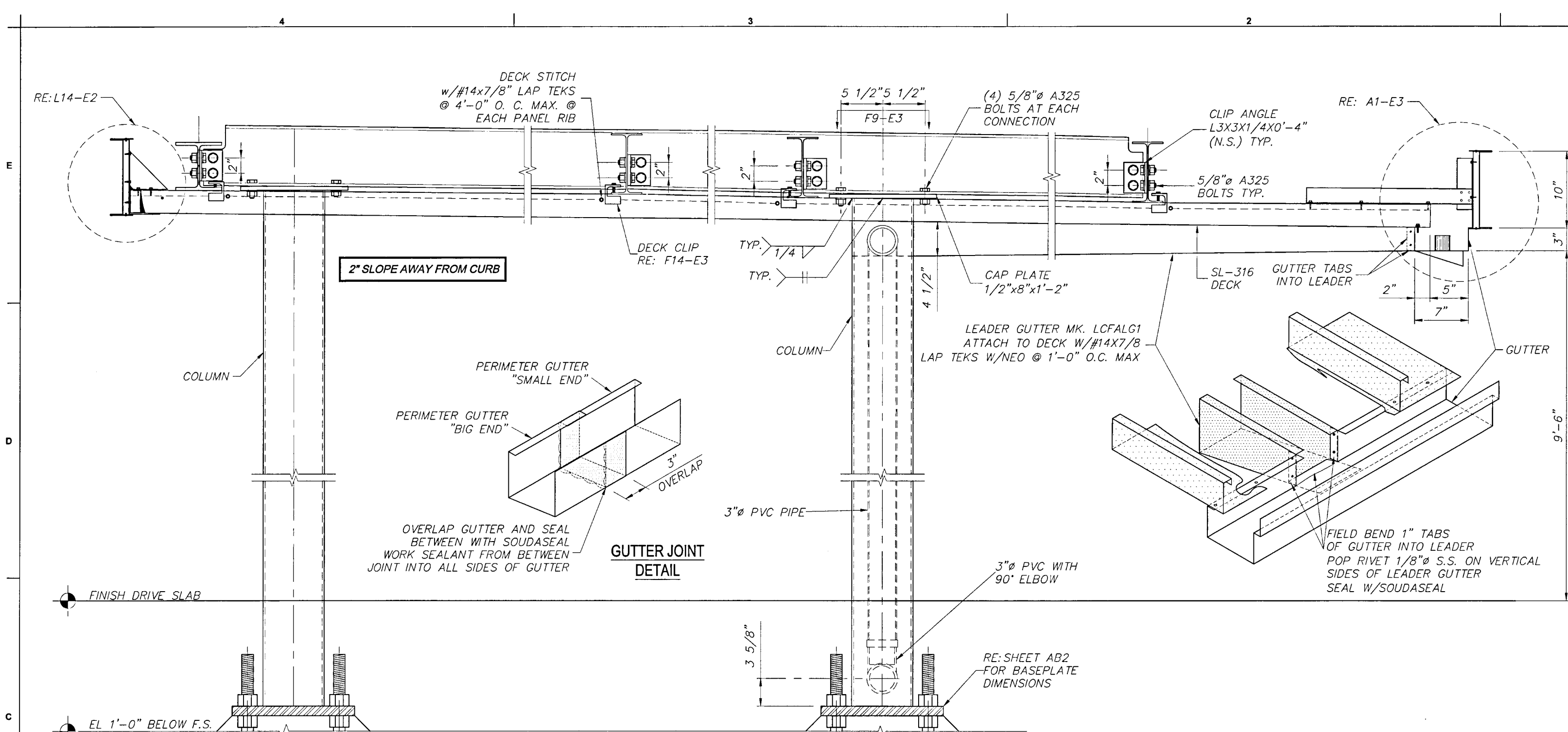
CHICK-FIL-A
OLDHAM VILLAGE FSU
SW CORNER US HWY 50 & MO STATE RTE 291.
LEE'S SUMMIT, MO 64081

FSR# 05248

REVISION SCHEDULE

NO.	DATE	DESCRIPTION
-----	------	-------------

JOB NO. LSC: 78797
PRINTED FOR ISSUED FOR PERMIT
DATE 10/15/2024
DRAWN BY RED
Information contained on this drawing and in all digital files produced for above named project may not be reproduced or used without express written or verbal consent from authorized project representatives.
SHEET
CANOPY FRAMING PLAN
SHEET NUMBER
F2FC-3
EI OF 4



L14	SECTION AT FASCIA
N.T.S.	FI-E2

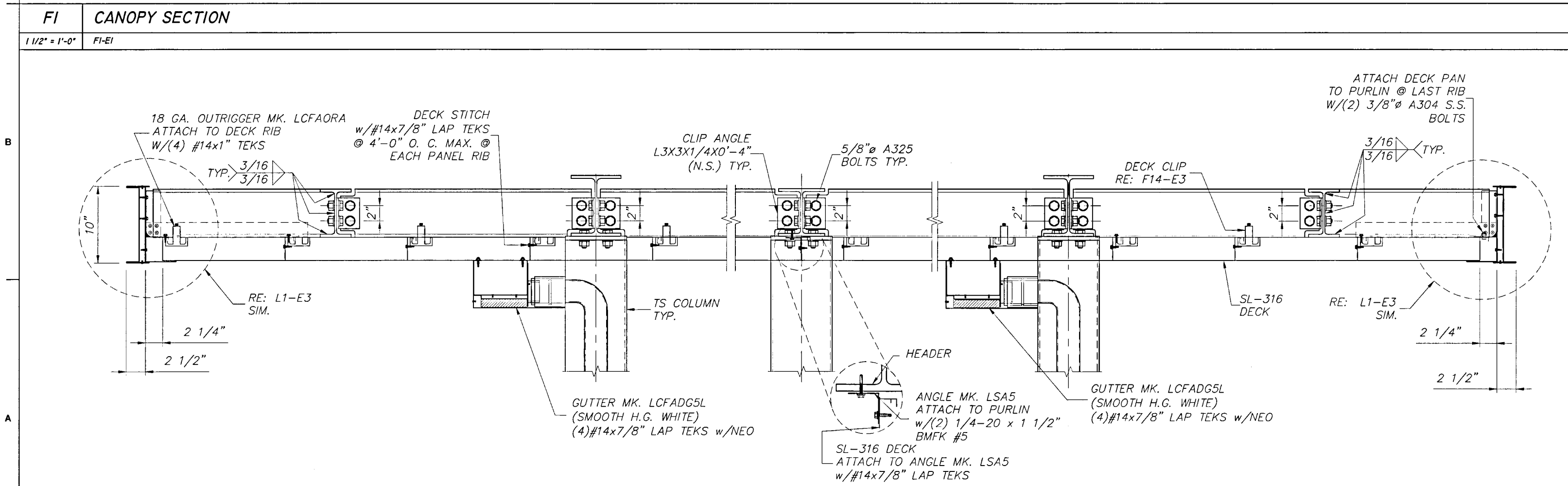
Chick-fil-A
5200 Buffington Road
Atlanta, Georgia
30349-2998

LANE
SUPPLY, INC.
120 Fairview
Arlington, TX. 76010
(817) 261-9116

NOTICE: THIS DOCUMENT IS THE PROPERTY OF LANE COMPANY. NEITHER THIS DOCUMENT NOR ANY DATA OR INFORMATION HEREIN SHALL BE COPIED OR REPRODUCED IN ANY MANNER, LOANED, OTHERWISE DISPOSED OF, OR USED FOR ANY PURPOSE WHATSOEVER, WITHOUT THE PRIOR WRITTEN PERMISSION OF LANE COMPANY. IF THE DOCUMENT IS LOANED BY OR WITH THE AUTHORITY OF LANE COMPANY, THE BORROWER, IN CONSIDERATION OF SUCH LOAN, AGREES TO THE FOREGOING CONDITIONS AND TO RETURN THIS DOCUMENT ON REQUEST OR UPON COMPLETION OF THE SPECIFICALLY AUTHORIZED WORK FOR WHICH IT WAS USED.

NOV 12 2024

C.O.A. 2001015838



F14	NOT USED
-----	----------

DEAD LOAD = 3 p.s.f.(DECK + LIGHTS) + WEIGHT OF STRUCTURAL COMPONENTS
LIVE LOAD = 20 p.s.f.
SNOW LOAD = 20 p.s.f.

WIND LOAD V_{ULT} = 116 m.p.h. EXP. C
WIND LOAD V_{ASD} = 90 m.p.h. EXP. C
BLDG CODE = 2018 INTERNATIONAL BUILDING CODE
EQUIVALENT LATERAL FORCE PROCEDURE
LATERAL FORCE RESISTING SYSTEM = CANTILEVERED COLUMN SYSTEM-ORDINARY STEEL MOMENT FRAME
P_f = 20 p.s.f.
C_e = 1.2
C_t = 1.2
I_s = 1.0

W = DRIFT LOADS NOT CONSIDERED
P_d = DRIFT LOADS NOT CONSIDERED
SITE CLASS = D (DEFAULT)
S_s (0.2) = 0.100
S₁ (1.0) = 0.068
SDS = 0.107
SD1 = 0.109
F_a = 1.60
F_v = 2.40
R = 1.25

IMPORTANCE FACTOR = 1.0
RISK CATEGORY = II
SEISMIC DESIGN CATEGORY = B
CS = 0.085
CONSTRUCTION TYPE = VB
OCCUPANCY CATEGORY = M
TOTAL SEISMIC BASE SHEAR BOTH DIRECTIONS = 0.85 KIPS

AI	CANOPY SECTION
1 1/2" = 1'-0"	FI-EI

A14	DESIGN LOADS
N.T.S.	

CHICK-FIL-A
OLDHAM VILLAGE FSU
SW CORNER US HWY 50 & MO STATE RTE 291.
LEE'S SUMMIT, MO 64081

FSR# 05248

REVISION SCHEDULE

NO.	DATE	DESCRIPTION

JOB NO. LSC: 76797
PRINTED FOR ISSUED FOR PERMIT
DATE 10/15/2024
DRAWN BY RED

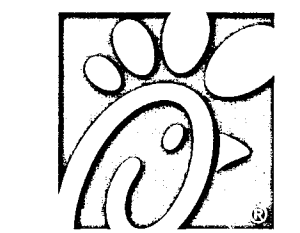
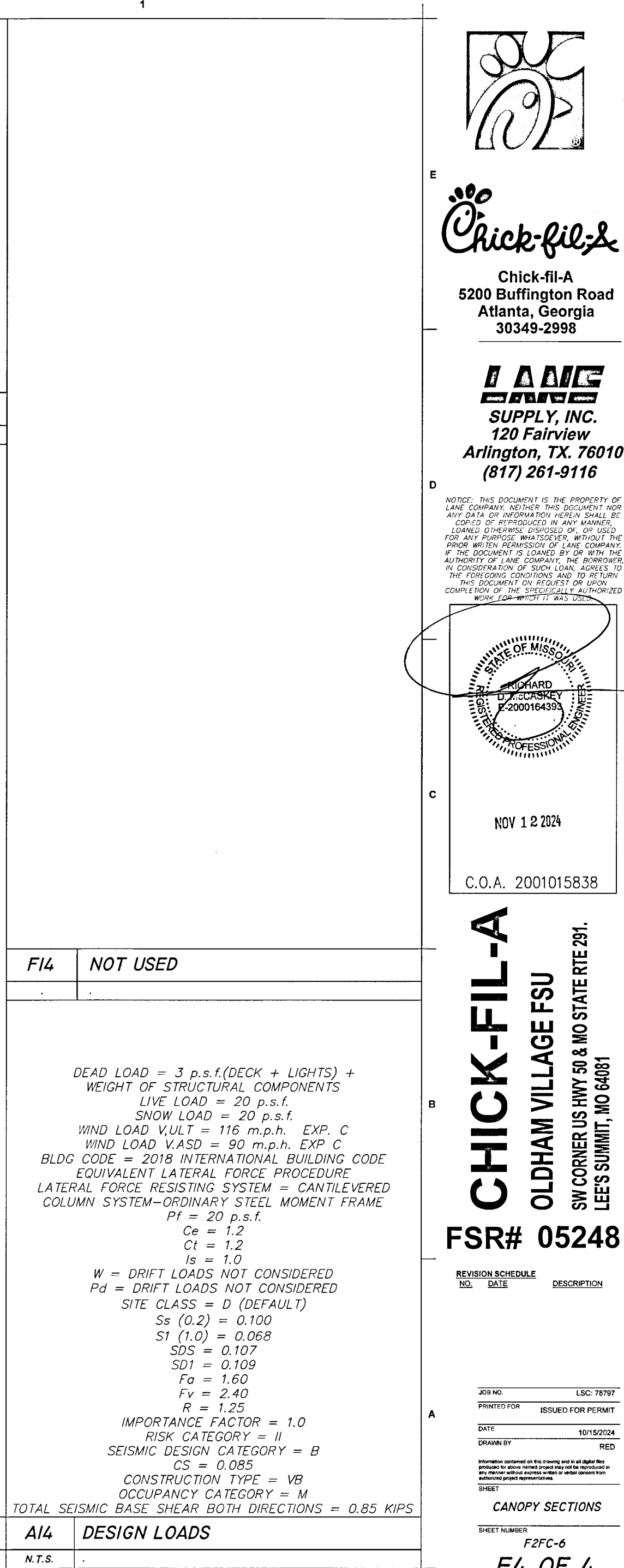
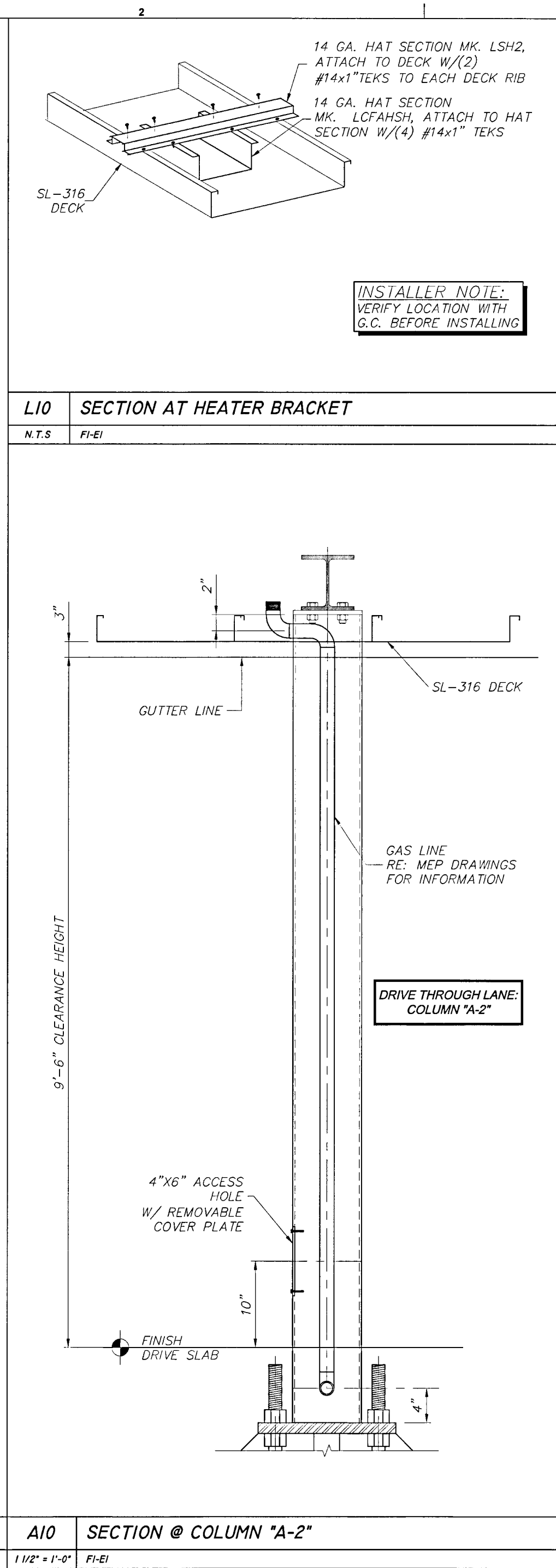
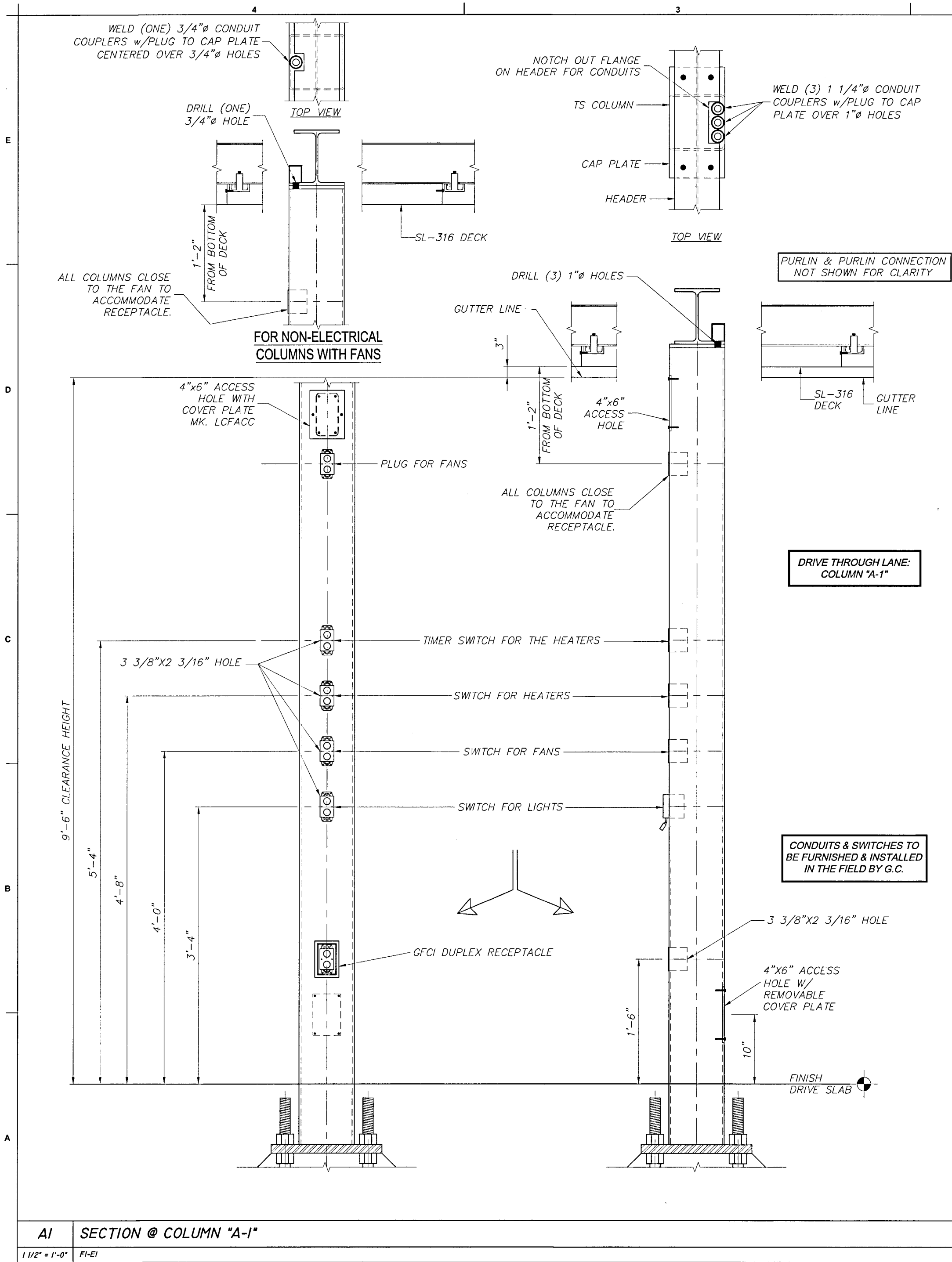
Information contained on this drawing and in all digital files produced for above named project may not be reproduced or any manner without express written or verbal consent from authorized project representative.

SHEET

CANOPY SECTIONS

SHEET NUMBER

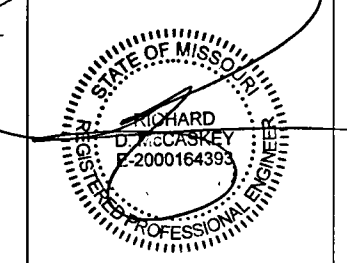
F2FC-4
E2 OF 4



Chick-fil-A
5200 Buffington Road
Atlanta, Georgia
30349-2998

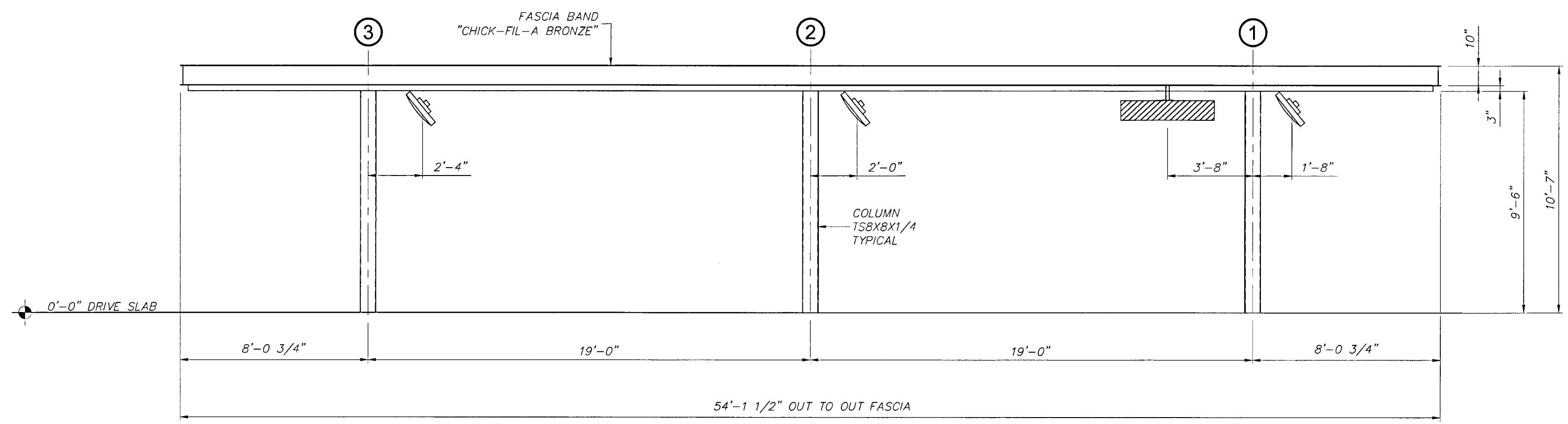
LANE
SUPPLY, INC.
120 Fairview
Arlington, TX. 76010
(817) 261-9116

NOTICE: THIS DOCUMENT IS THE PROPERTY OF LANE COMPANY. NEITHER THIS DOCUMENT NOR ANY DATA OR INFORMATION HEREIN SHALL BE COPIED OR REPRODUCED IN ANY MANNER. LOANED OTHERWISE DISPOSED OF, OR USED FOR ANY PURPOSE WHATSOEVER, WITHOUT THE PRIOR WRITTEN PERMISSION OF LANE COMPANY. IF THE DOCUMENT IS LOANED BY OR WITH THE AUTHORITY OF LANE COMPANY, THE BORROWER, IN CONSIDERATION OF SUCH LOAN, AGREES TO THE FOREGOING CONDITIONS AND TO RETURN THIS DOCUMENT ON REQUEST OR UPON COMPLETION OF THE SPECIFICALLY AUTHORIZED WORK FOR WHICH IT WAS USED.

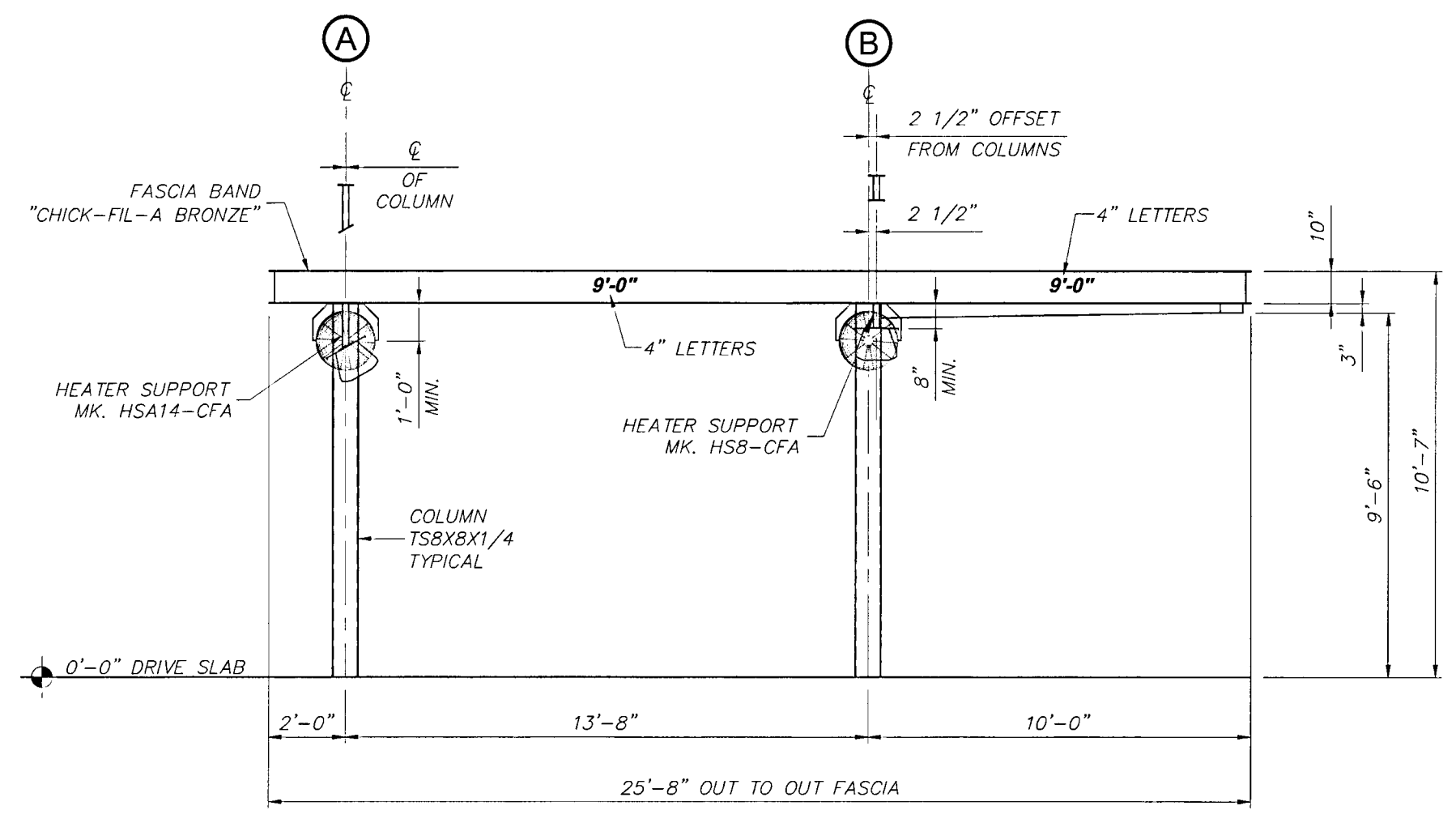


NOV 12 2024
C.O.A. 2001015838

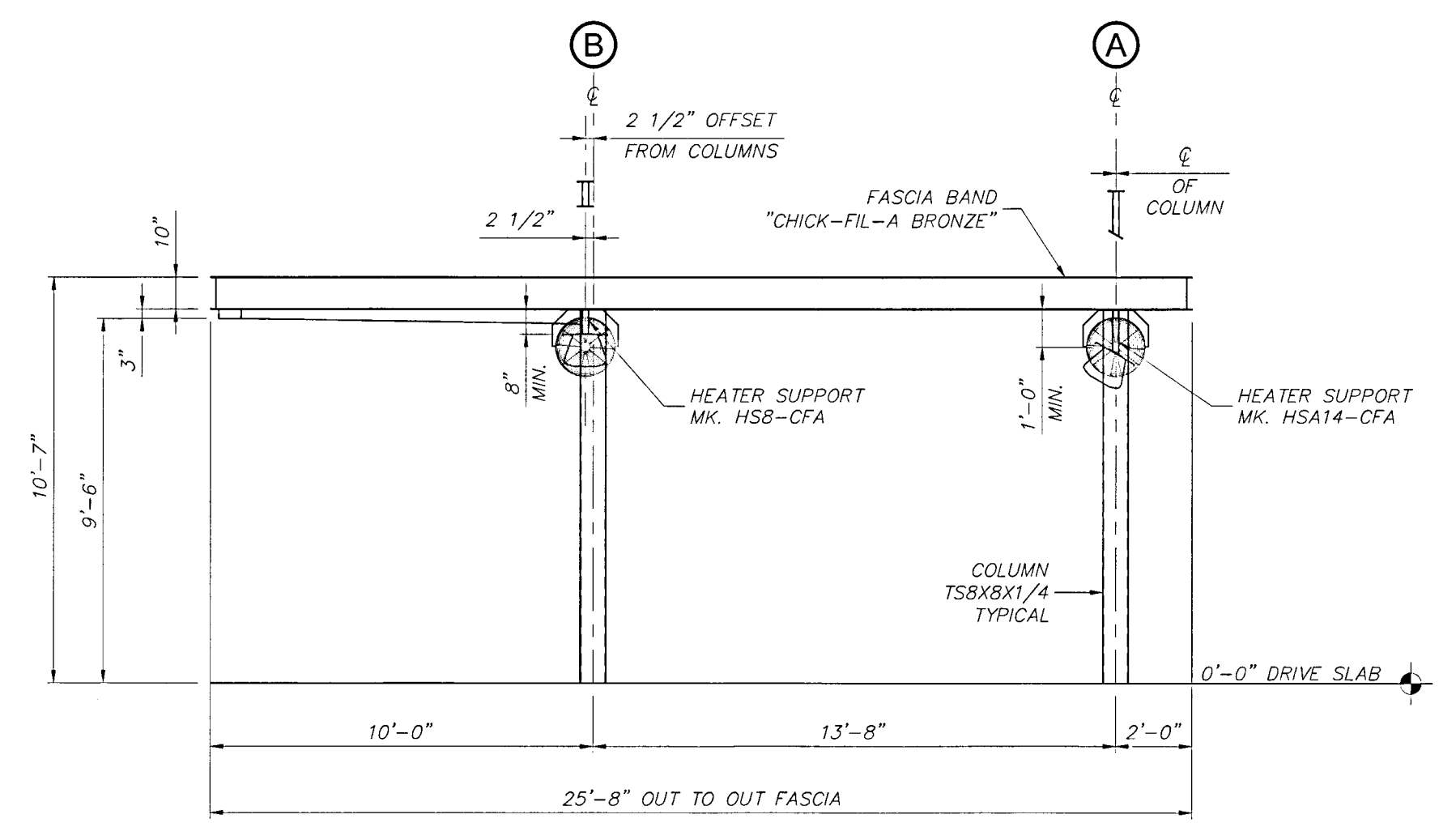
CHICK-FIL-A
OLDHAM VILLAGE FSU
SW CORNER US HWY 50 & MO STATE RTE 291.
LEE'S SUMMIT, MO 64081
FSR# 05248



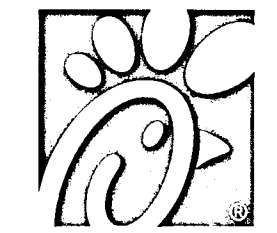
HI CANOPY SIDE ELEVATION
3/8" = 1'-0" FI-ABI, FI-EI, FI-LLI



AI CANOPY END ELEVATION
3/8" = 1'-0" FI-ABI, FI-EI, FI-LLI



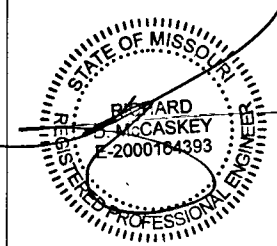
A9 CANOPY END ELEVATION
3/8" = 1'-0" FI-ABI, FI-EI, FI-LLI



Chick-fil-A
5200 Buffington Road
Atlanta, Georgia
30349-2998

LANE
SUPPLY, INC.
120 Fairview
Arlington, TX. 76010
(817) 261-9116

NOTICE: THIS DOCUMENT IS THE PROPERTY OF LANE COMPANY. NEITHER THIS DOCUMENT NOR ANY DATA OR INFORMATION HEREIN SHALL BE COPIED OR REPRODUCED IN ANY MANNER, LOANED OTHERWISE, DISPOSED OF, OR USED FOR ANY PURPOSE WHATSOEVER, WITHOUT THE PRIOR WRITTEN PERMISSION OF LANE COMPANY. IF THE DOCUMENT IS LOANED BY OR WITH THE AUTHORITY OF LANE COMPANY, THE BORROWER, IN CONSIDERATION OF SUCH LOAN, AGREES TO THE FOREGOING CONDITIONS AND TO RETURN THIS DOCUMENT ON REQUEST OR UPON COMPLETION OF THE SPECIFICALLY AUTHORIZED WORK FOR WHICH IT WAS USED.



NOV 12 2024

C.O.A. 2001015838

CHICK-FIL-A
OLDHAM VILLAGE FSU
SW CORNER US HWY 50 & MO STATE RTE 291.
LEE'S SUMMIT, MO 64001

FSR# 05248

REVISION SCHEDULE
NO. DATE DESCRIPTION

JOB NO. LSC: 78797
PRINTED FOR ISSUED FOR PERMIT
DATE 10/15/2024
DRAWN BY RED

Information contained on this drawing and all digital files produced for above named project may not be reproduced in any format without express written or verbal consent from authorized project representatives.

SHEET CANOPY ELEVATION PLAN

SHEET NUMBER F2FC-7

ELI OF 1

