

# HOME2 SUITES BY HILTON

## LEE'S SUMMIT, MO

PRINTS ISSUED  
04/17/2024 - CITY SUBMISSION

REVISIONS:  
1 05/17/2024 CITY RESPONSE  
2 06/14/2024 CITY & BRAND RESPONSE  
4 09/13/2024 BRAND RESPONSE

**rosemann & associates P.C.**  
ARCHITECTURE  
INTERIOR DESIGN  
ENGINEERING  
PLANNING  
1526 Grand Boulevard  
Kansas City, MO 64108-1404  
p: 816.472.1448  
w: www.rosemann.com  
© 2024 Rosemann & Associates, P.C.  
DENVER ▲ KANSAS CITY ▲ ST. LOUIS ▲ ATLANTA

**OWNER**  
**INTRINSIC DEVELOPMENT**  
ADDRESS: 3622 ENDEAVOR AVE., STE. 101  
COLUMBIA, MO 65201  
CONTACT: **BRIAN MAENNER**  
EMAIL: bmaenner@intrinsicdevelopment.com  
PHONE: 573.881.0280

**ARCHITECT**  
**ROSEMAN & ASSOCIATES, P.C.**  
ADDRESS: 1526 Grand Boulevard  
Kansas City, MO 64108  
CONTACT: **A.J. DOLPH**  
EMAIL: ajdolph@rosemann.com  
PHONE: 816.472.1448

**CONTRACTOR**  
**INTRINSIC DEVELOPMENT**  
ADDRESS: 3622 ENDEAVOR AVE., STE. 101  
COLUMBIA, MO 65201  
CONTACT: **BRIAN MAENNER**  
EMAIL: bmaenner@intrinsicdevelopment.com  
PHONE: 573.881.0280

**STRUCTURAL ENGINEER**  
**MCCLURE**  
ADDRESS: 1901 PENNSYLVANIA DRIVE  
COLUMBIA MO 65202  
CONTACT: **CELESTE SPICKERT**  
EMAIL: cspickert@mcclurevision.com  
PHONE: 573.234.4492

**MECHANICAL, ELECTRICAL, PLUMBING ENGINEER**  
**J-SQUARED ENGINEERING**  
ADDRESS: 2400 BLUFF CREEK DRIVE, SUITE 101  
COLUMBIA, MO 65201  
CONTACT: **ANDREW WHITE**  
EMAIL: andrew@j-squaredeng.com  
PHONE: 573.234.4492

**CIVIL ENGINEER**  
**CROCKETT ENGINEERING CONSULTANTS**  
ADDRESS: 1000 W NIFONG BLVD., BLDG 1  
COLUMBIA, MO 65203  
CONTACT: **TIM CROCKETT**  
EMAIL: tim@crockettengineering.com  
PHONE: 573.447.0292

**LANDSCAPE ARCHITECT**  
**CROCKETT ENGINEERING CONSULTANTS**  
ADDRESS: 1000 W NIFONG BLVD., BLDG 1  
COLUMBIA, MO 65203  
CONTACT: **TIM CROCKETT**  
EMAIL: tim@crockettengineering.com  
PHONE: 573.447.0292

SHEET TITLE  
TITLE SHEET  
PROJECT NUMBER: 22023  
SHEET NUMBER:

# G-001

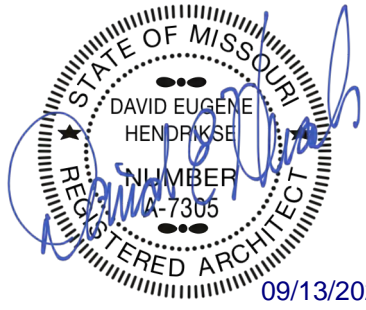
## PROJECT CERTIFICATION

I, **(David E. Hendrikse)**, hereby specify pursuant to the governing requirements of the state, that the documents intended to be authenticated by my seal are limited to:

G-001	G-201	G-301	A-105	A-202	A-401	A-501	A-702
G-002	G-202	G-302	A-106	A-203	A-402	A-502	A-703
G-003	G-203	G-303	A-107	A-200	A-403	A-503	A-704
G-004	G-204	AS-100	A-120	A-301	A-404	A-504	A-705
G-005	G-205	AS-101	A-121	A-302	A-405	A-600	A-706
G-006	G-206	AS-102	A-122	A-303	A-406	A-601	A-707
G-007	G-207	AS-103	A-123	A-304	A-407	A-602	A-708
G-100	G-208	A-101	A-124	A-305	A-408	A-603	A-710
G-101	G-209	A-102	A-125	A-306	A-410	A-604	A-711
G-102	G-210	A-103	A-200	A-307	A-415	A-700	A-715
G-103	G-300	A-104	A-201	A-400	A-500	A-701	

and I hereby disclaim any responsibility for all other plans, specifications, reports or other documents or instruments relating to or intended to be used for any part or parts of the architectural or engineering project or survey.

SEAL

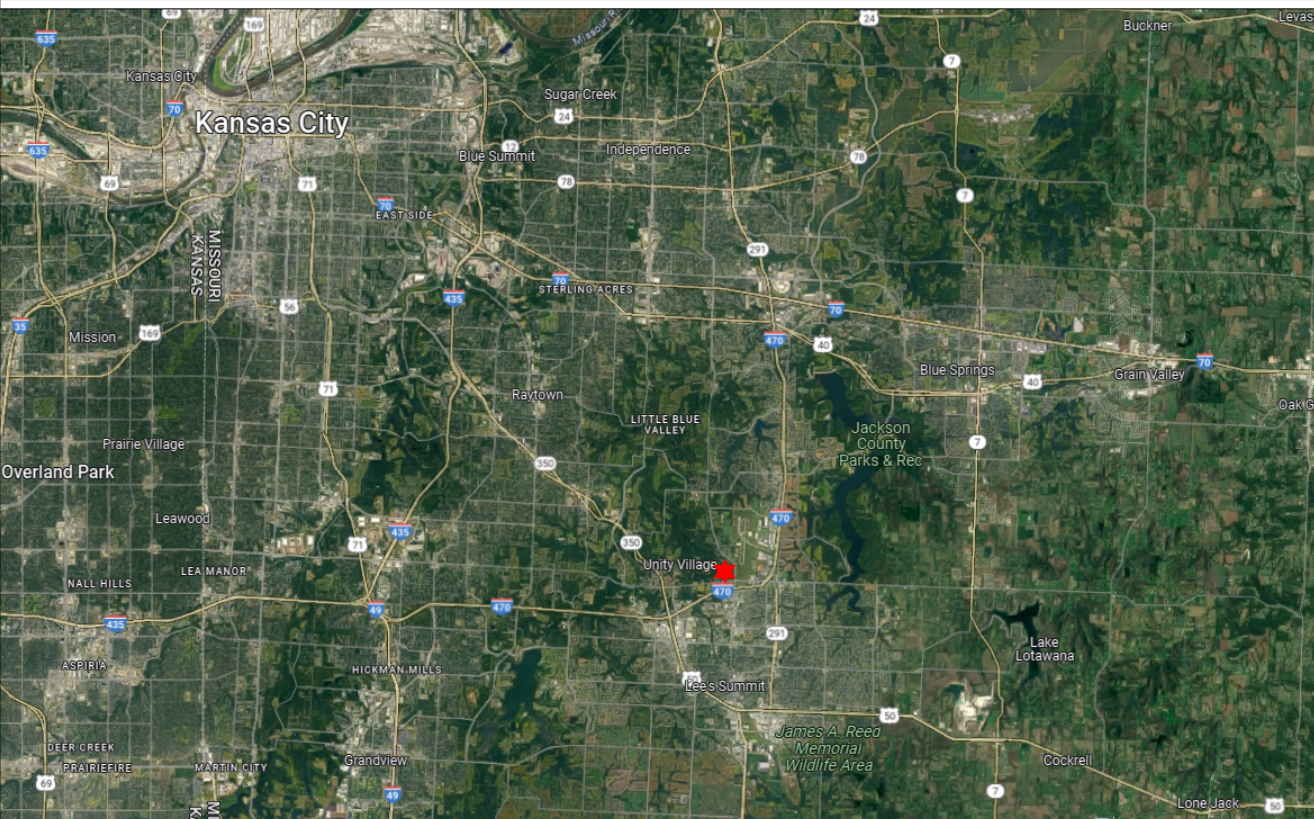


DAVID E. HENDRIKSE, AIA

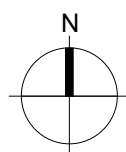
## REGIONAL MAP



## VICINITY MAP



**HOME2 SUITES BY HILTON**  
**251 NE ALURA WAY**  
**LEE'S SUMMIT, MISSOURI 64064**



## SHEET INDEX

### GENERAL

Sheet Issue Date	Sheet Number	Sheet Name	Rev.	Current Revision Date
04/17/24	G-001	TITLE SHEET		09/13/2024
04/17/24	G-002	GENERAL INFORMATION		
04/17/24	G-003	PLAN GENERAL NOTES & KEYNOTES		
04/17/24	G-004	GENERAL INFORMATION		
04/17/24	G-005	GENERAL INFORMATION		
04/17/24	G-006	GENERAL INFORMATION		
04/17/24	G-007	GENERAL INFORMATION		
04/17/24	G-100	CODE ANALYSIS	1	05/17/2024
04/17/24	G-101	CODE ANALYSIS		
04/17/24	G-102	PARTITION ASSEMBLIES		
04/17/24	G-103	ASSEMBLIES - FLOOR/CEILING		
04/17/24	G-201	UL ASSEMBLIES - D916 / G566		
04/17/24	G-202	UL ASSEMBLIES - L546		
04/17/24	G-203	UL ASSEMBLIES - L546		
04/17/24	G-204	UL ASSEMBLIES - P545		
04/17/24	G-205	UL ASSEMBLIES - P545 / U301		
04/17/24	G-206	UL ASSEMBLIES - U301 / U305		
04/17/24	G-207	UL ASSEMBLIES - U305		
04/17/24	G-208	UL ASSEMBLIES - U415		
04/17/24	G-209	UL ASSEMBLIES - U415 / X790		
04/17/24	G-210	UL ASSEMBLIES - U905		
04/17/24	G-300	ACCESSIBILITY STANDARDS		
04/17/24	G-301	ACCESSIBILITY STANDARDS		
04/17/24	G-302	ACCESSIBILITY STANDARDS		
04/17/24	G-303	ACCESSIBILITY STANDARDS		
04/17/24	AS-100	AMENITIES PLAN		
04/17/24	AS-101	ARCHITECTURAL SITE AMENITIES		
04/17/24	AS-102	ARCHITECTURAL SITE AMENITIES	3	06/27/2024
04/17/24	AS-103	ARCHITECTURAL SITE AMENITIES		

CIVIL UNDER SEPARATE REVIEW, REFERENCE FDP

### STRUCTURAL

Sheet Issue Date	Sheet Number	Sheet Name	Rev.	Current Revision Date
04/17/24	S001	GENERAL NOTES	1	05/17/2024
04/17/24	S002	GENERAL NOTES	1	05/17/2024
04/17/24	S003	GENERAL NOTES		
04/17/24	S004	STRUCTURAL SPECIAL INSPECTIONS	1	05/17/2024
04/17/24	S005	SCHEDULES	1	05/17/2024
04/17/24	S099	EXTERIOR FOUNDATION WALL AND SLAB-ON-GRADE DIMENSION PLAN		
04/17/24	S100	FOUNDATION PLAN	1	05/17/2024
04/17/24	S101	LEVEL 2 FRAMING PLAN	2	06/14/2024
04/17/24	S102	LEVEL 3 FRAMING PLAN	2	06/14/2024
04/17/24	S103	LEVEL 4 FRAMING PLAN	2	06/14/2024
04/17/24	S104	ROOF FRAMING PLAN	2	06/14/2024
04/17/24	S400	ENLARGED VIEWS	2	06/14/2024
04/17/24	S401	ENLARGED VIEWS	2	06/14/2024
04/17/24	S402	ENLARGED VIEWS	2	06/14/2024
04/17/24	S501	TYPICAL FOUNDATION DETAILS		
04/17/24	S502	FOUNDATION DETAILS	1	05/17/2024
04/17/24	S503	FOUNDATION DETAILS	2	06/14/2024
04/17/24	S504	FOUNDATION DETAILS		
04/17/24	S505	FOUNDATION PEDESTAL DETAILS	1	05/17/2024
04/17/24	S510	STEEL DETAILS	1	05/17/2024
04/17/24	S511	STEEL DETAILS	1	05/17/2024
04/17/24	S512	ENTRY CANOPY SECTIONS	1	05/17/2024
04/17/24	S520	MASONRY DETAILS	1	05/17/2024
04/17/24	S531	TYPICAL WOOD DETAILS		
04/17/24	S532	FLOOR FRAMING DETAILS	2	06/14/2024
04/17/24	S533	FLOOR FRAMING DETAILS	2	06/14/2024
04/17/24	S534	FLOOR FRAMING DETAILS	2	06/14/2024
04/17/24	S535	FLOOR FRAMING DETAILS	2	06/14/2024
04/17/24	S540	ROOF DETAILS	2	06/14/2024
04/17/24	S541	ROOF DETAILS	1	05/17/2024
04/17/24	S542	ROOF DETAILS	2	06/14/2024
04/17/24	S550	SHEAR WALL DETAILS	1	05/17/2024

### ARCHITECTURAL

Sheet Issue Date	Sheet Number	Sheet Name	Rev.	Current Revision Date
04/17/24	A-101	FIRST FLOOR PLAN	1	05/17/2024
04/17/24	A-102	SECOND FLOOR PLAN	1	05/17/2024
04/17/24	A-103	THIRD FLOOR PLAN	2	06/14/2024
04/17/24	A-104	FOURTH FLOOR PLAN	2	06/14/2024
04/17/24	A-105	ROOF PLAN		
04/17/24	A-106	ROOF VENT CALCULATIONS & DETAILS		
04/17/24	A-107	ROOFING & FLASHING DETAILS		
04/17/24	A-120	FIRST FLOOR REFLECTED CEILING PLAN	2	06/14/2024
04/17/24	A-121	SECOND FLOOR REFLECTED CEILING PLAN	2	06/14/2024
04/17/24	A-122	THIRD FLOOR REFLECTED CEILING PLAN	2	06/14/2024
04/17/24	A-123	FOURTH FLOOR REFLECTED CEILING PLAN	2	06/14/2024
04/17/24	A-124	ENLARGED REFLECTED CEILING PLAN - INDOOR POOL	2	06/14/2024
04/17/24	A-125	CEILING DETAILS		
04/17/24	A-200	EXTERIOR ELEVATIONS		
04/17/24	A-201	EXTERIOR ELEVATIONS		
04/17/24	A-202	EXTERIOR COLOR ELEVATIONS	2	06/14/2024
04/17/24	A-203	EXTERIOR COLOR ELEVATIONS	2	06/14/2024
04/17/24	A-300	BUILDING SECTIONS		
04/17/24	A-301	BUILDING SECTIONS		
04/17/24	A-302	WALL SECTIONS		
04/17/24	A-303	WALL SECTIONS		
04/17/24	A-304	ELEVATOR SECTIONS & DETAILS	1	05/17/2024
04/17/24	A-305	STAIR #1 SECTION & DETAILS	2	06/14/2024
04/17/24	A-306	STAIR #2 SECTION & DETAILS	2	06/14/2024
04/17/24	A-307	FRONT CANOPY PLAN / ELEV. / SECTION / & DETAILS	1	05/17/2024
04/17/24	A-400	KING ONE BEDROOM SUITE	2	06/14/2024
04/17/24	A-401	KING ONE BEDROOM SUITE - ACCESSIBLE		
04/17/24	A-402	KING ONE BEDROOM SUITES - ELEVATIONS	2	06/14/2024
04/17/24	A-403	KING STUDIO SUITE	2	06/14/2024
04/17/24	A-404	KING STUDIO SUITE - CONNECTOR	2	06/14/2024
04/17/24	A-405	KING STUDIO SUITE - ACCESSIBLE	2	06/14/2024
04/17/24	A-406	QUEEN QUEEN STUDIO SUITE	2	06/14/2024
04/17/24	A-407	QUEEN QUEEN STUDIO SUITE - CONNECTOR	2	06/14/2024
04/17/24	A-408	QUEEN QUEEN STUDIO SUITE - ACCESSIBLE	2	06/14/2024
04/17/24	A-410	ENLARGED FLOOR PLAN - COMMON AREAS	2	06/14/2024
04/17/24	A-415	UNIT DETAILS		
04/17/24	A-500	DETAILS		
04/17/24	A-501	DETAILS	1	05/17/2024
04/17/24	A-502	DETAILS		
04/17/24	A-503	DETAILS		
04/17/24	A-504	ELEVATOR & CMU DETAILS		
04/17/24	A-600	WINDOW / DOOR / FINISH SCHEDULES	2	06/14/2024
04/17/24	A-601	STOREFRONT ELEVATIONS	2	06/14/2024
04/17/24	A-602	DOOR DETAILS	2	06/14/2024
04/17/24	A-603	DOOR DETAILS		
04/17/24	A-604	WINDOW DETAILS		
04/17/24	A-700	GUESTROOM BATHROOMS	2	06/14/2024
04/17/24	A-701	GUESTROOM BATHROOMS	2	06/14/2024
04/17/24	A-702	PUBLIC RESTROOMS	2	06/14/2024
04/17/24	A-703	INTERIOR ELEVATIONS		
04/17/24	A-704	INTERIOR ELEVATIONS	2	06/14/2024
04/17/24	A-705	ENLARGED INTERIOR ELEVATIONS	4	09/13/2024
04/17/24	A-706	ENLARGED INTERIOR ELEVATIONS		
04/17/24	A-707	ENLARGED INTERIOR ELEVATIONS		
04/17/24	A-708	ENLARGED INTERIOR ELEVATIONS		
04/17/24	A-710	FINISH PLANS-COMMON SPACES	2	06/14/2024
04/17/24	A-711	FINISH PLANS-COMMON SPACES	2	06/14/2024
04/17/24	A-715	FINISH TRANSITION DETAILS		

### MECHANICAL

Sheet Issue Date	Sheet Number	Sheet Name	Rev.	Current Revision Date
04/17/24	MEP1	MECHANICAL ELECTRICAL PLUMBING COVER SHEET		
04/17/24	MEP2	SITE UTILITIES PLAN	1	05/17/2024
04/17/24	MEP3	SITE LIGHTING PLAN		
04/17/24	MEP4	MEP PLAN - ROOF	2	06/14/2024
04/17/24	M101	HVAC PLAN - FIRST FLOOR	2	06/14/2024
04/17/24	M102	HVAC PLAN - SECOND FLOOR		
04/17/24	M103	HVAC PLAN - THIRD FLOOR		
04/17/24	M104	HVAC PLAN - FOURTH FLOOR		
04/17/24	M501	HVAC DETAILS		
04/17/24	M601	HVAC SCHEDULES	2	06/14/2024

### ELECTRICAL

Sheet Issue Date	Sheet Number	Sheet Name	Rev.	Current Revision Date
04/17/24	EP101	POWER PLAN - FIRST FLOOR	2	06/14/2024
04/17/24	EP102	POWER PLAN - SECOND FLOOR	2	06/14/2024
04/17/24	EP103	POWER PLAN - THIRD FLOOR	2	06/14/2024
04/17/24	EP104	POWER PLAN - FOURTH FLOOR	2	06/14/2024
04/17/24	EP401	ENLARGED POWER PLAN - GUEST ROOMS	4	09/13/2024
04/17/24	EL101	LIGHTING PLAN - FIRST FLOOR	2	06/14/2024
04/17/24	EL102	LIGHTING PLAN - SECOND & THIRD FLOORS	2	06/14/2024
04/17/24	EL103	LIGHTING PLAN - FOURTH FLOOR	2	06/14/2024
04/17/24	EL401	ENLARGED LIGHTING PLAN - GUEST ROOMS	2	06/14/2024
04/17/24	FS101	FIRE ALARM AND SECURITY PLAN - FIRST FLOOR	4	09/13/2024
04/17/24	FS102	FIRE ALARM AND SECURITY PLAN - SECOND FLOOR		
04/17/24	FS103	FIRE ALARM AND SECURITY PLAN - THIRD FLOOR		
04/17/24	FS104	FIRE ALARM AND SECURITY PLAN - FOURTH FLOOR		
04/17/24	E501	ELECTRICAL DETAILS & SCHEDULES	2	06/14/2024
04/17/24	E601	ELECTRICAL SCHEDULES		
04/17/24	E602	ELECTRICAL SCHEDULES	2	06/14/2024
04/17/24	E603	ELECTRICAL SCHEDULES		
04/17/24	E604	ELECTRICAL SCHEDULES		

## PROJECT DATA

### PROJECT DESIGN INFORMATION

#### NEW CONSTRUCTION:

ZONING:	PMIX - PLANNED MIXED USE DISTRICT
CODE:	2018 INTERNATIONAL BUILDING CODE 2018 INTERNATIONAL PLUMBING CODE 2018 INTERNATIONAL MECHANICAL CODE 2018 INTERNATIONAL FUEL GAS CODE 2018 INTERNATIONAL FIRE CODE 2017 NATIONAL ELECTRIC CODE 2009 ACCESSIBILITY CODE ICC/ANSI 117-1 LEE'S SUMMIT AMENDMENTS TO ENERGY CODE NFPA 72 & NFPA 13 / 13R
OCCUPANCY GROUP:	R-1, HOTEL TRANSIENT A-2, UNCONCENTRATED A-4, SWIMMING POOL B, BACK OF HOUSE
TYPE OF CONSTRUCTION:	TYPE VA
ENERGY CONSERVATION:	WALLS AS PART OF BLDG ENVELOPE R-11 FLOORS AS PART OF BLDG ENVELOPE R-19 ROOFS AS PART OF BLDG ENVELOPE R-19 CEILING AS PART OF BLDG ENVELOPE R-30

#### BUILDING SUMMARY:

NUMBER:	1 TOTAL BUILDING
HEIGHT:	4 STORIES, 49'-0"
SQUARE FOOTAGES:	GROSS NET
FIRST FLOOR	16,402 S.F. 16,079 S.F.
SECOND FLOOR	14,828 S.F. 14,529 S.F.
THIRD FLOOR	14,828 S.F. 14,529 S.F.
FOURTH FLOOR	14,828 S.F. 14,529 S.F.

#### UNIT SUMMARY:

ACCESSIBLE UNITS	(4) UNITS - ACC. KING ONE BEDROOM (2) UNITS - ACC KING STUDIO (1) UNITS - ACC. QUEEN QUEEN STUDIO
H/VI UNITS	(4) UNITS - KING STUDIO (2) UNITS - KING STUDIO CONNECTING (1) UNITS - KING ONE BEDROOM (3) UNITS - QUEEN QUEEN STUDIO (2) UNITS - QUEEN QUEEN CONNECTING

#### TYPE 'B' UNITS

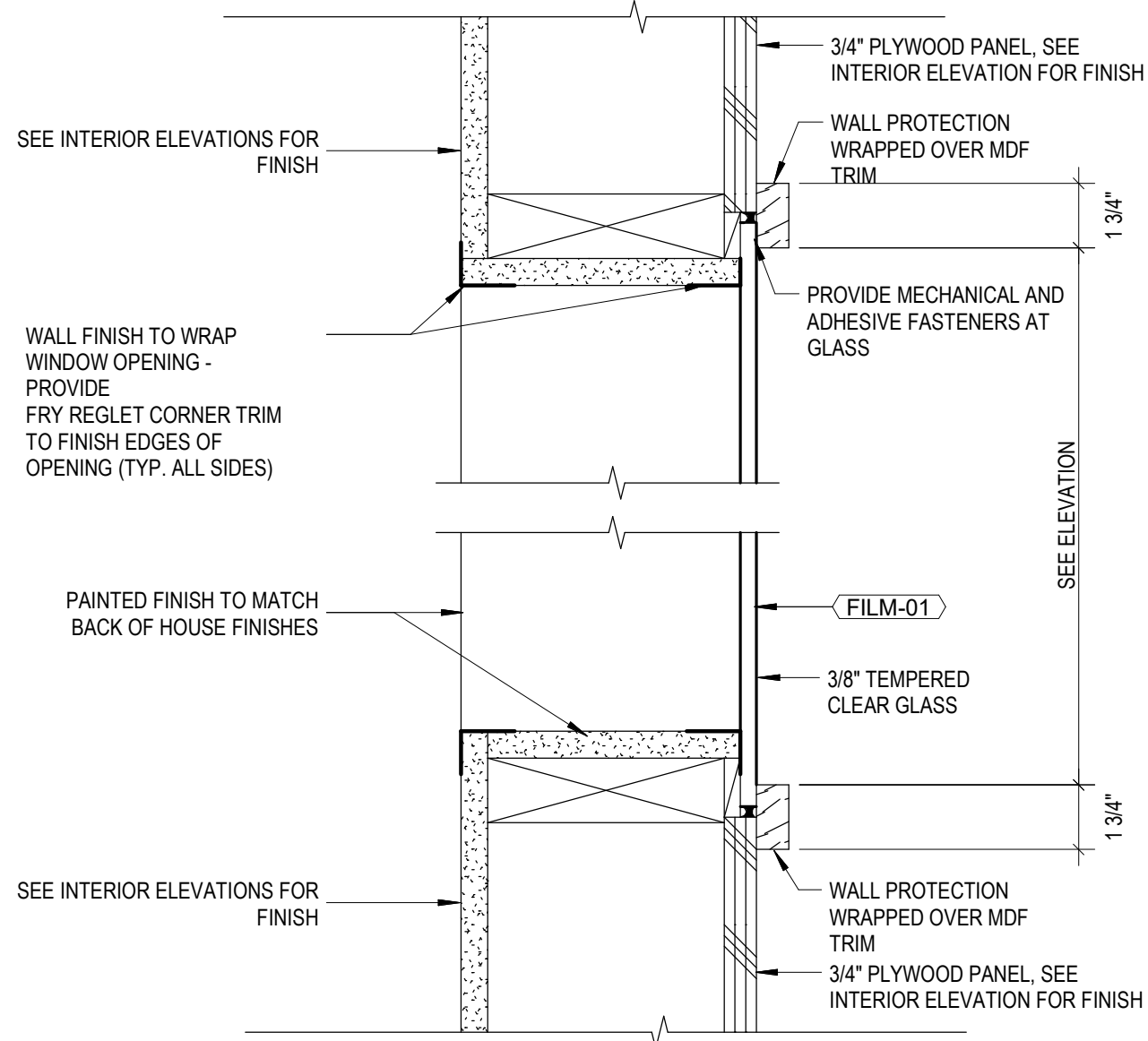
TOTAL UNITS	(71) UNITS - KING STUDIO (4) UNITS - KING STUDIO CONNECTING (3) UNITS - KING ONE BEDROOM (9) UNITS - QUEEN QUEEN STUDIO (1
-------------	--



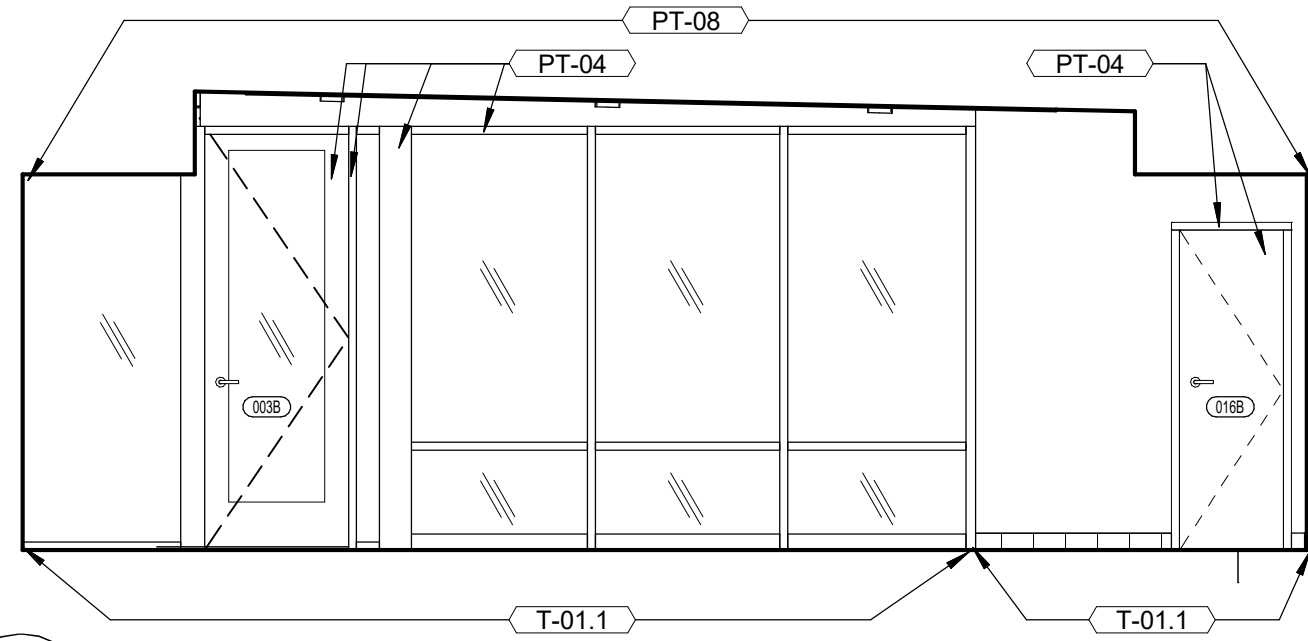
PRINTS ISSUED  
04/17/2024 - CITY SUBMISSION

REVISIONS:  
2 06/14/2024 CITY & BRAND RESPONSE  
4 09/13/2024 BRAND RESPONSE

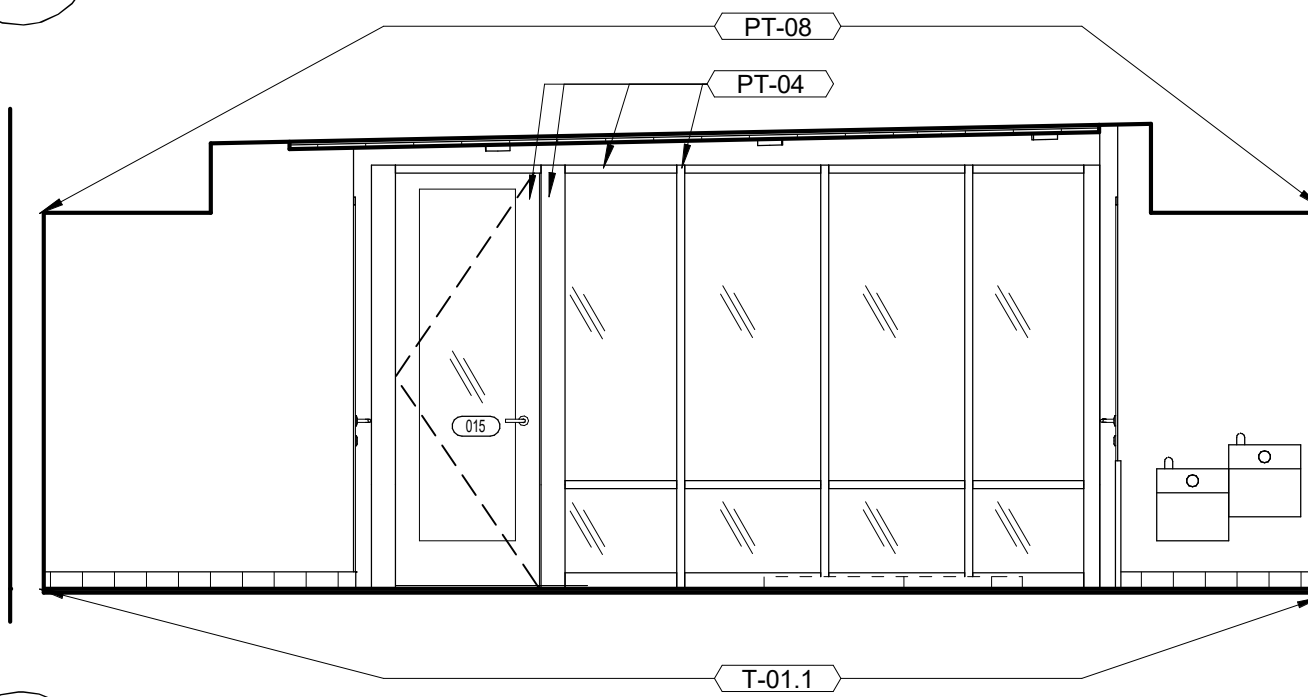
REFERENCE G-003 FOR GENERAL NOTES



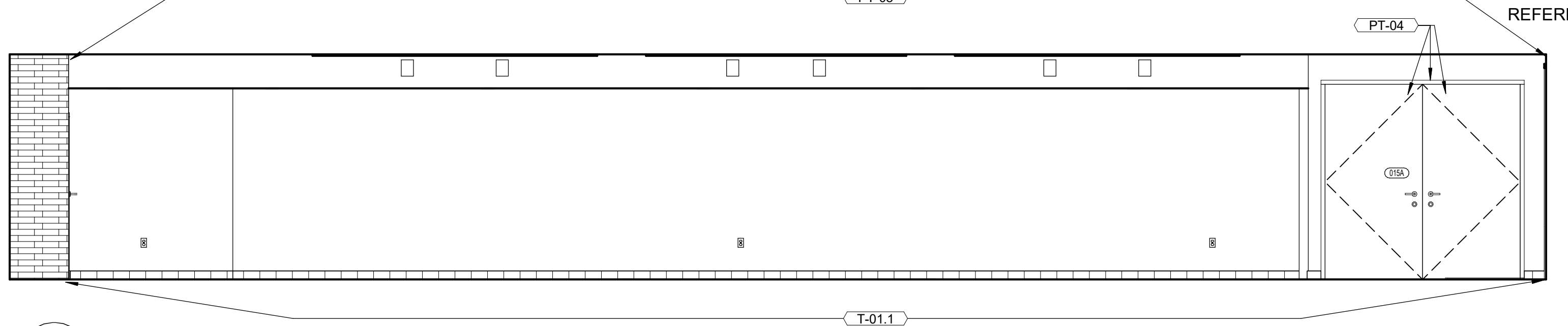
D2 VIEW WINDOW - DETAIL  
3" = 1'-0"



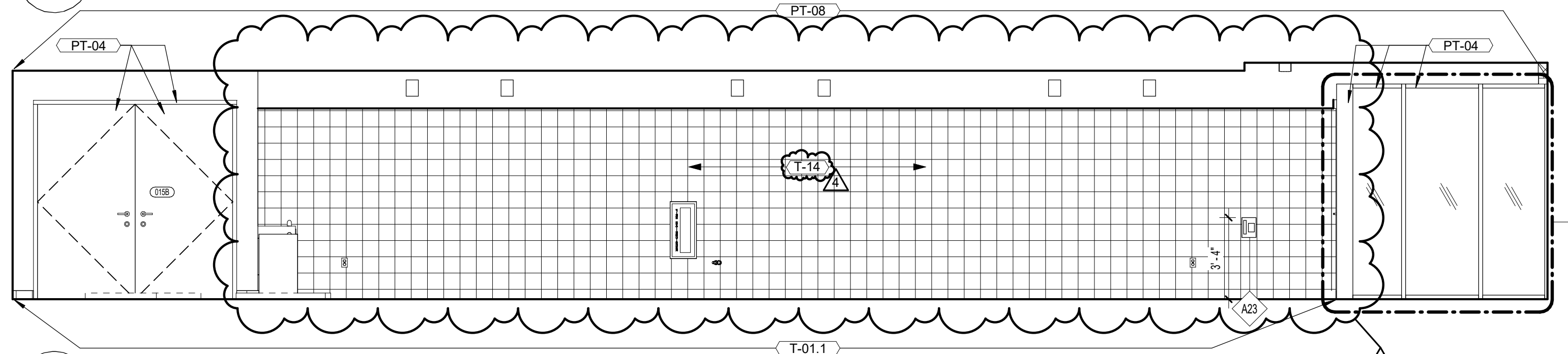
C4 POOL - ELEVATION  
1/4" = 1'-0"



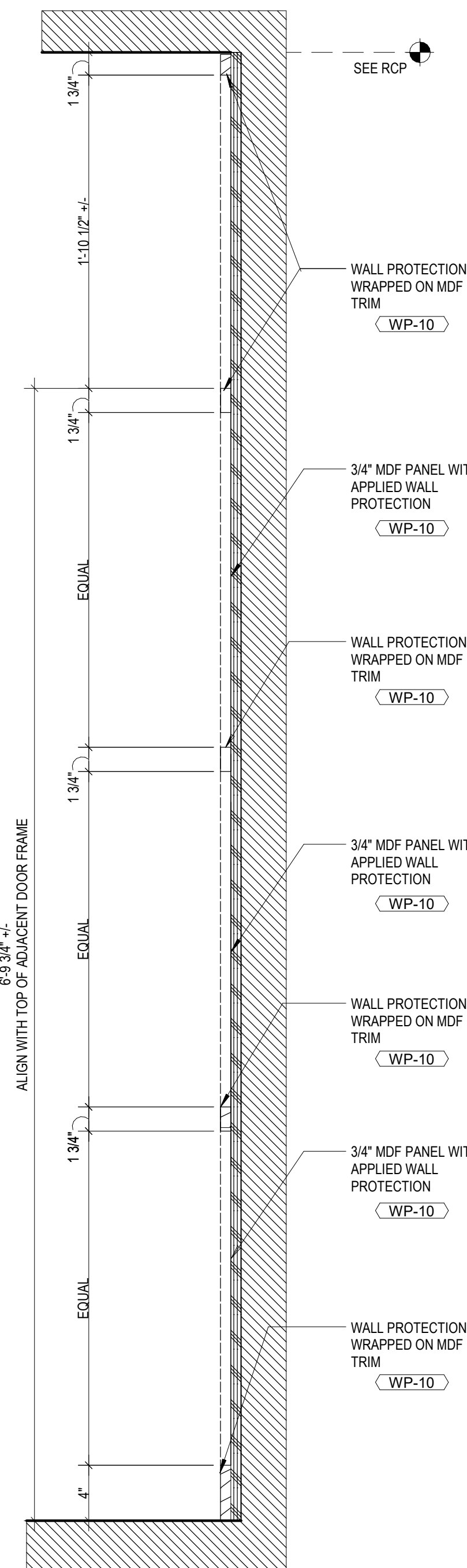
C3 POOL - ELEVATION  
1/4" = 1'-0"



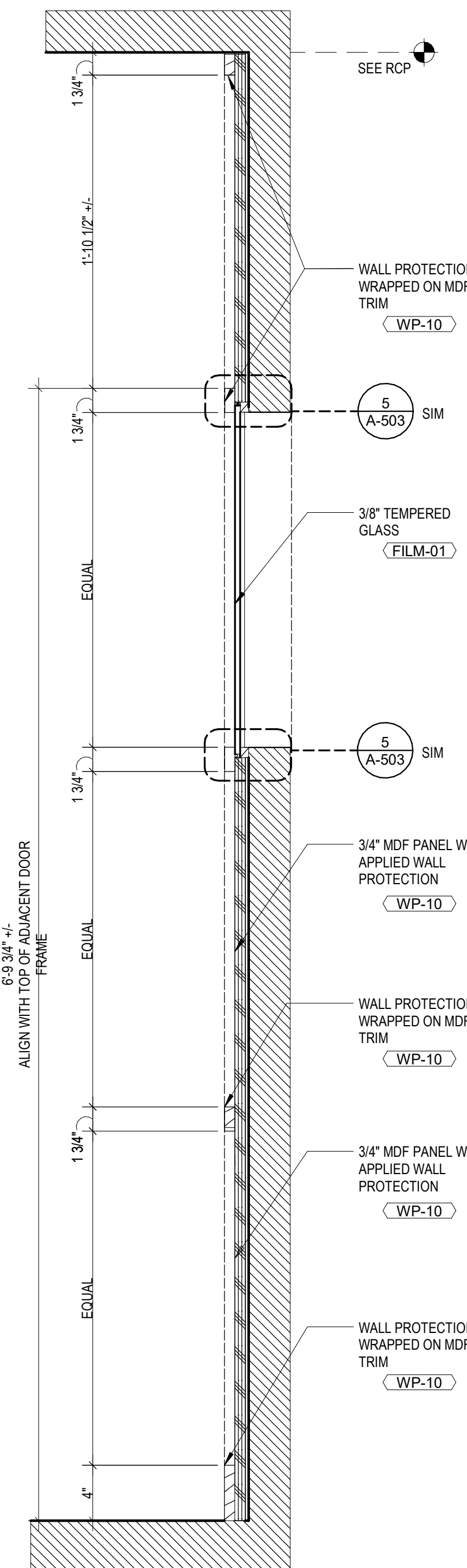
A4 POOL - ELEVATION  
1/4" = 1'-0"



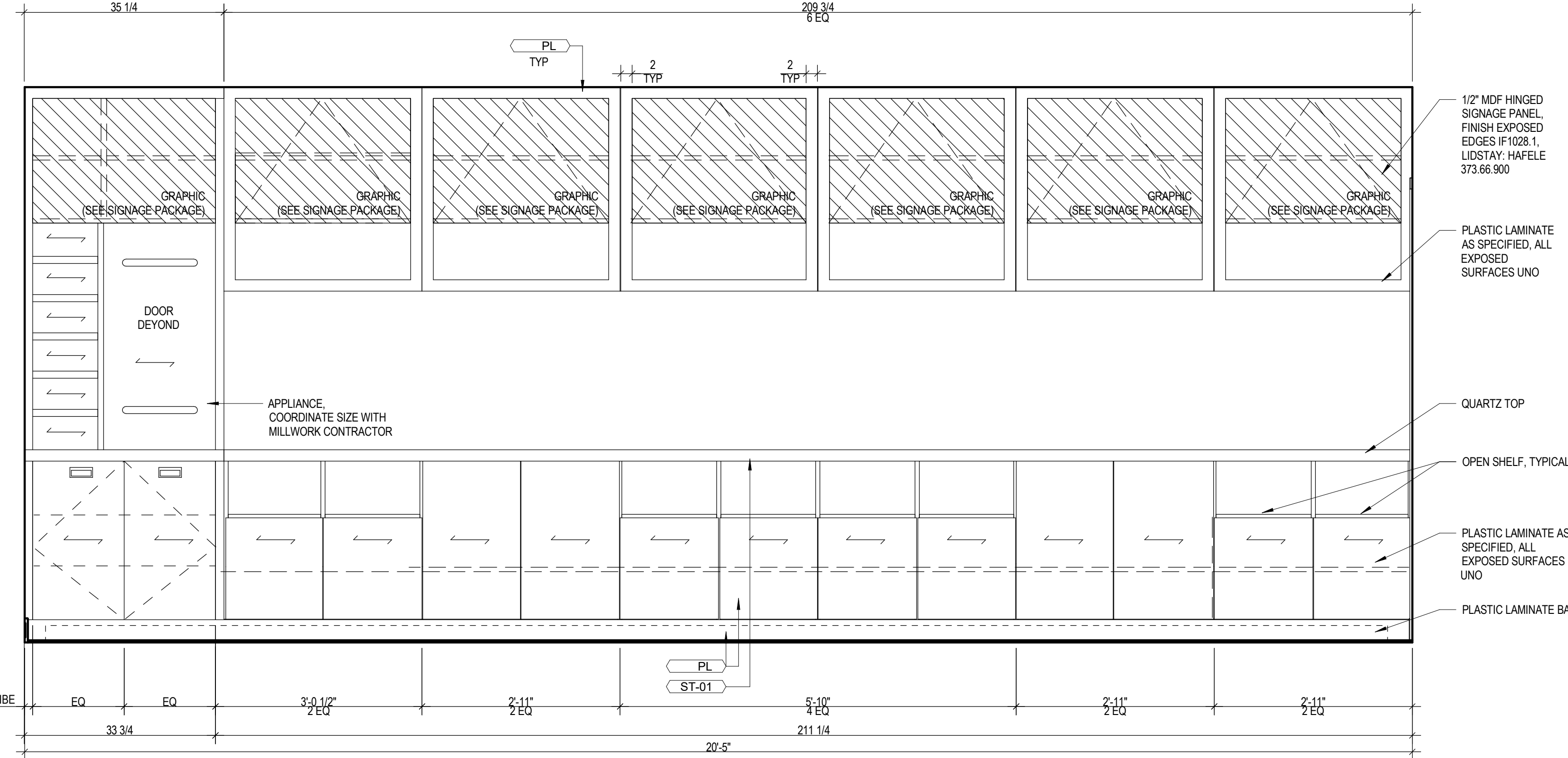
A3 POOL - ELEVATION  
1/4" = 1'-0"



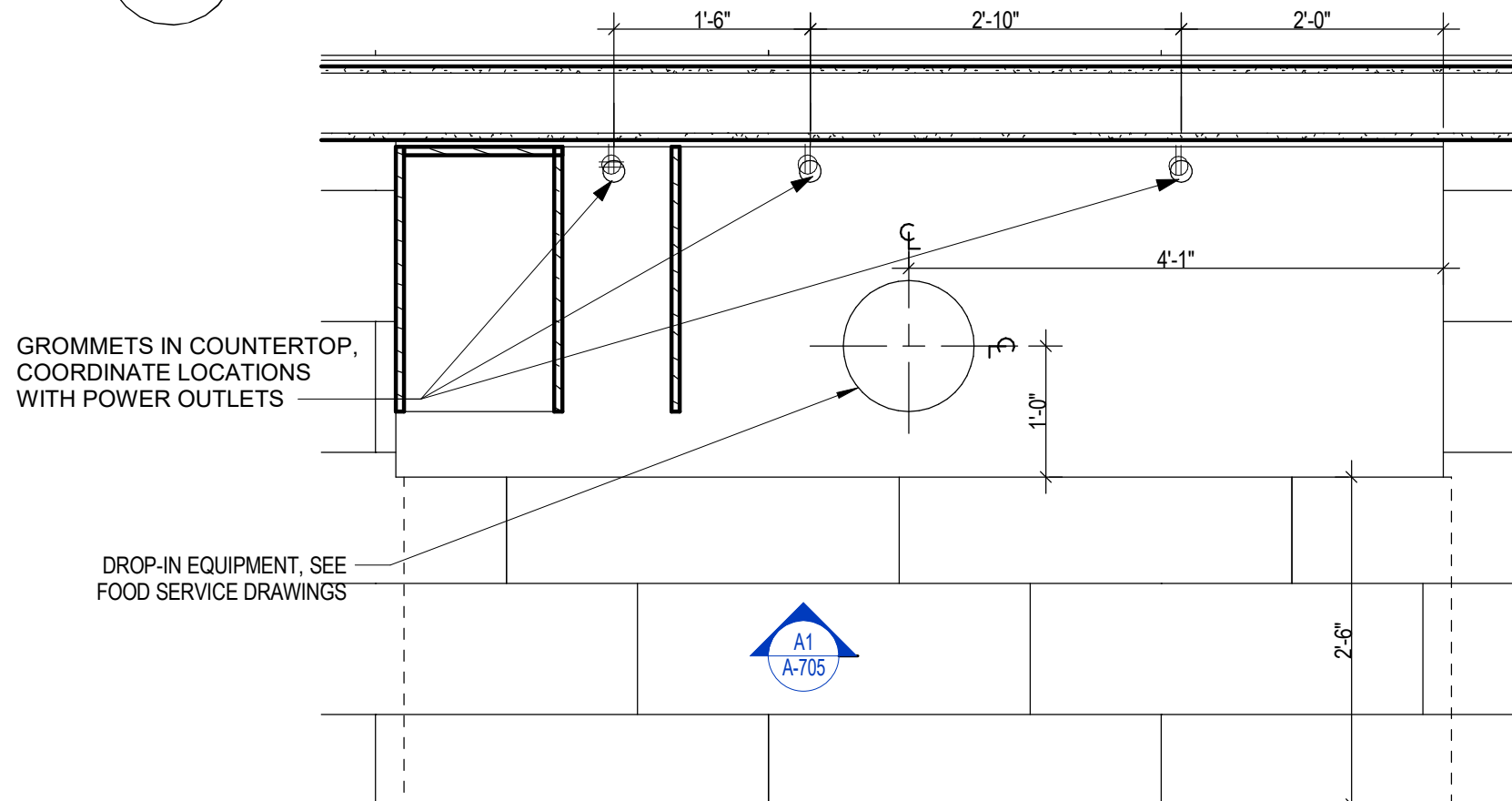
D1 TRIM - DETAIL  
1 1/2" = 1'-0"



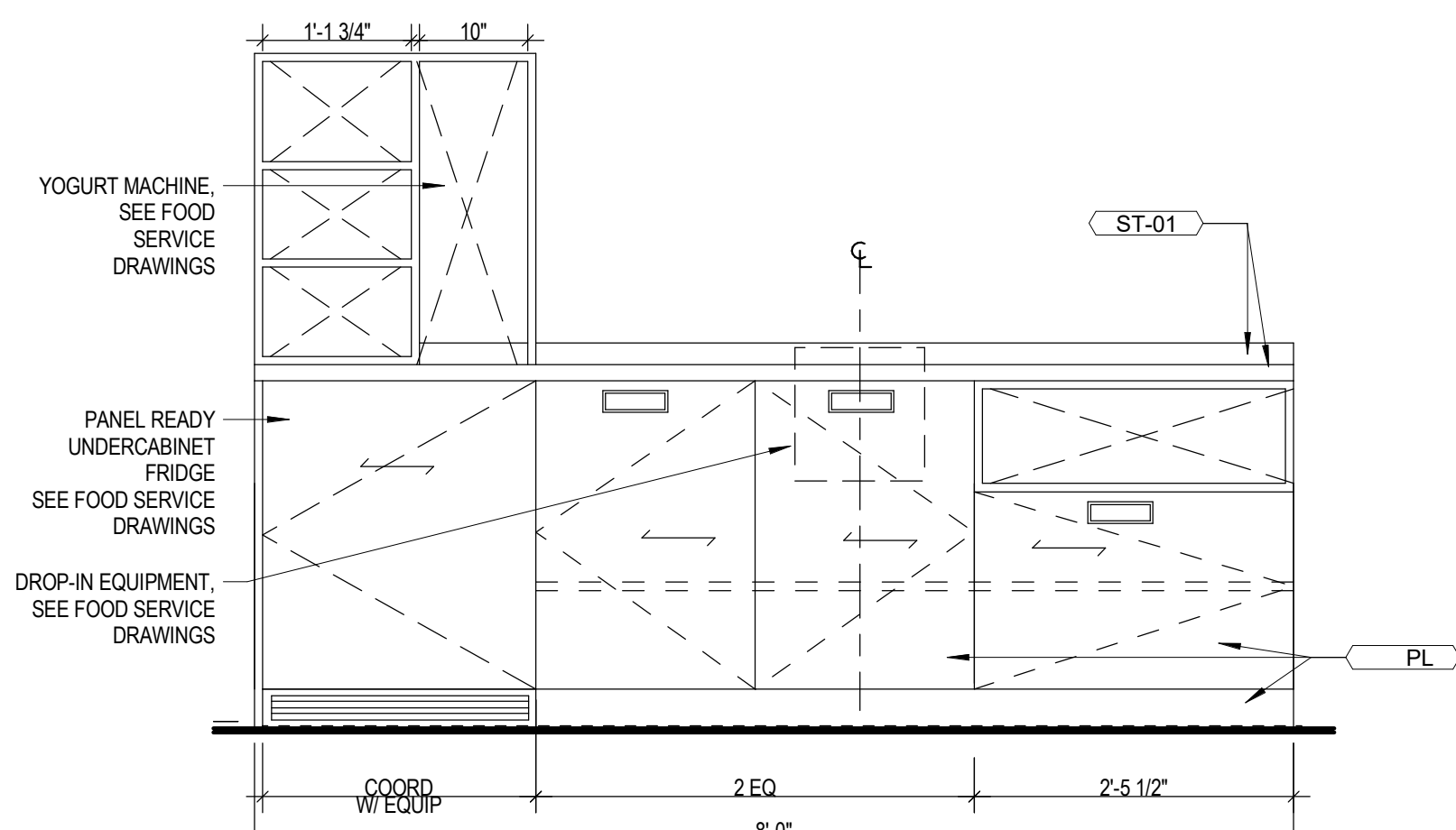
C1 TRIM AT WINDOW - DETAIL  
1 1/2" = 1'-0"



A2 BREAKFAST - ELEV. ENLARGED 2  
3/4" = 1'-0"

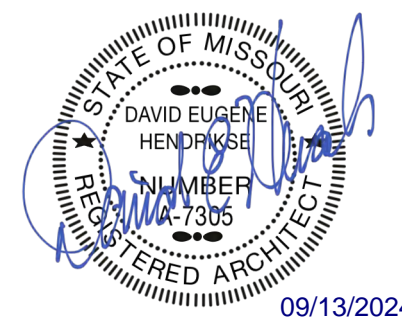


B1 BREAKFAST - PLAN ENLARGED  
3/4" = 1'-0"



A1 BREAKFAST - ELEV. ENLARGED 1  
3/4" = 1'-0"

rosemann & ASSOCIATES P.C.  
ARCHITECTURE  
INTERIOR DESIGN  
ENGINEERING  
PLANNING  
1526 Grand Boulevard  
Kansas City, MO 64108-1404  
p: 816.472.1448  
w: www.rosemann.com  
© 2024 Rosemann & Associates, P.C.  
DENVER ▲ KANSAS CITY ▲ ST. LOUIS ▲ ATLANTA



HOME2 SUITES BY HILTON

LEE'S SUMMIT, MO

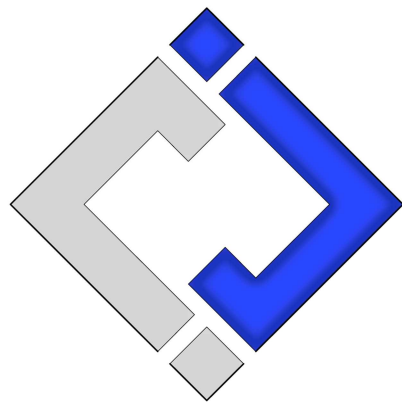
SHEET TITLE  
ENLARGED INTERIOR  
ELEVATIONS

PROJECT NUMBER: 22023

SHEET NUMBER:

A-705





J-SQUARED  
ENGINEERING

2400 Bluff Creek Drive, Suite 101  
Columbia, Missouri 65201  
573.234.4492  
www.j-squaredeng.com

J2 PROJECT No: J21005

J2 DESIGN: ACW

ISSUE TITLE DATE

CITY SUBMISSION 04 / 17 / 2024

CITY & BRAND RESPONSE 06 / 14 / 2024

REVISION 4 09 / 13 / 2024



MECHANICAL - ELECTRICAL - PLUMBING DESIGN DRAWINGS FOR:

# Home 2 Suites By Hilton

Village at Discovery Park Lot 2  
Lee's Summit, MO

AHJ APPROVAL STAMP

SHEET TITLE

ENLARGED POWER  
PLAN - GUEST  
ROOMS

SHEET NUMBER

EP401

## POWER PLAN SYMBOL LEGEND

- PK-XX CIRCUIT WIRING  
→ PK-XX CIRCUIT TAG  
● JUNCTION BOX  
xx +42 RECEPTACLE  
INDICATES MOUNTING HEIGHT TO BOTTOM OF BOX (STANDARD @ 18" AFF UNLESS NOTED OTHERWISE)  
"WP" = WEATHERPROOF OUTDOOR RECEPTACLE  
"AW" = ABOVE WINDOW RECEPTACLE  
"AC" = ABOVE CEILING RECEPTACLE  
"IG" = ISOLATED GROUND  
GFCI DUPLEX CONVENIENCE RECEPTACLE  
208V RECEPTACLE  
QUADPLEX CONVENIENCE RECEPTACLE  
USB OUTLET WITH USB-A & USB-C CHARGING PORT  
DATA / PHONE JACK BOX WITH 1" CONDUIT WITH CAT-6 (STANDARD @ 18" AFF UNLESS NOTED OTHERWISE)  
WIRELESS ACCESS POINT, CEILING MOUNTED  
WIRELESS ACCESS POINT, WALL MOUNTED  
FLOOR RECEPTACLE  
FLOOR DATA  
DISCONNECT  
FUSED DISCONNECT  
ADDRESSABLE SMOKE DETECTOR WITH SOUNDER BASE; (ALARM SIGNAL MAY BE SUPERVISORY)

## POWER PLAN GENERAL NOTES:

- SEE E500 & E600 SERIES SHEET FOR ADDITIONAL ELECTRICAL NOTES, DETAILS, & SCHEDULES.
- COMPLETE (1) UNIT OF EACH TYPE & OBTAIN OWNER'S APPROVAL BEFORE PROCEEDING TO OTHERS.
- DO NOT INSTALL OUTLETS BACK-TO-BACK EVEN IF ASSOCIATED WITH DIFFERENT SYSTEM. OFFSET BOXES TO PREVENT SOUND PASS-THRU AT ADJACENT UNIT WALLS.
- COORDINATE LOCATION OF SWITCH & RECEPTACLES IN GUEST ROOM BATHROOMS WITH MIRROR, VANITY BACK-SPLASH, TOWEL HOLDER, ETC.
- COORDINATE ALL ELECTRICAL DEVICE MOUNTING HEIGHTS & LOCATIONS WITH ARCHITECTURAL PLANS.
- DOORBELL AND FIRE ALARM STROBES ARE ONLY REQUIRED IN HEARING IMPAIRED ROOMS.

## POWER PLAN KEY NOTES:

- TV CONNECTIONS FOR FREE-TO-GUEST CONTENT: COAX CABLE BEHIND TV, CAT6 RJ-45 JACK BEHIND TV (RUN IN SMURF TUBE IN WALL TO WAP UNDER DESK), & PATCH CORD TO EDGE CONTROLLER FOR CONNECTED ROOM (MIN. 6" CLEARANCE FROM WALL BOXES). VISIT [HILTONHDTV.COM](http://HILTONHDTV.COM) FOR ADDITIONAL INFORMATION.
- EACH CABLE MUST HOMERUN BETWEEN THE GUESTROOM AND THE IDF ON EACH FLOOR. VISIT [CONNECTEDROOM.HILTON.COM](http://CONNECTEDROOM.HILTON.COM) FOR CURRENT REQUIREMENTS AND OPTIONS.
- WIRED DATA CONNECTION FOR GUEST USE: PATCH CABLE TERMINATED ABOVE DESK FROM WAP PORT; COORDINATE ROUTING & DETAILS WITH G.C.
- WAP IN 3-GANG BOX MOUNTED VERTICALLY UNDER DESK. MAINTAIN 6" BETWEEN ALL BOXES. TYP ALL GUESTROOMS. COORDINATE WAP LOCATION WITH CASEGOODS TO AVOID CONFLICTS. VISIT [CONNECTEDROOM.HILTON.COM](http://CONNECTEDROOM.HILTON.COM) FOR CURRENT WIRELESS INTERNET REQ'S AND LIST OF APPROVED INTEGRATORS.
- WIRED THERMOSTAT FOR PTAC. MOUNTED 48" MAX TO TOP OF DEVICE. COMMUNICATION BETWEEN THERMOSTAT AND PTAC MAY BE WIRELESS.
- SWITCH CONTROLLING GARBAGE DISPOSAL GANGED WITH DUPLEX - REFER TO HADG FOR ACCESSIBLE ROOM REQUIREMENTS.
- DEDICATED CIRCUIT FOR DISHWASHER
- EXTEND J-BOX, DEVICE & COVER PLATE FLUSH W/ MILLWORK BACK PANEL
- DEDICATED CIRCUIT FOR GARBAGE DISPOSAL.
- OUTLET FOR MICROWAVE. REFER TO ARCHITECTURAL PLAN ROOM ELEVATIONS FOR MOUNTING HEIGHT. MOUNT DEVICE HORIZONTALLY (EXCEPT IN ACCESSIBLE UNITS); FACE PLATE TO BE WHITE.
- DOORBELL ON/OFF SWITCH (COMMUNICATION FEATURES ROOMS ONLY) SIGNAGE AS REQ'D.
- ADDITIONAL HORN STROBE: LOCATED IN COMMUNICATION FEATURES BATHROOMS ONLY. REFER TO ARCHITECTURAL PLANS FOR LOCATIONS.
- FIRE HORN IN STANDARD ROOMS. FIRE HORN/STROBE IN COMMUNICATION FEATURES ROOMS. REFER TO ARCHITECTURAL PLANS FOR LOCATIONS.
- SWITCHES CONTROLLING MECHANICAL SHADES - REFER TO FFE MANUAL.
- REFER TO OVERALL ELECTRICAL PLANS FOR PANEL DETAILS ("PXXX").
- RECEPTACLE MOUNTED HORIZONTALLY ABOVE CLOSET.
- QUAD RECEPTACLE WITH A MINIMUM (1) USB RECEPTACLE(S) (EITHER -A OR -C).

## POWER PLAN - KING STUDIO

SCALE: 1/4" = 1'-0"

## POWER PLAN - KING STUDIO - CONNECTOR

SCALE: 1/4" = 1'-0"

## POWER PLAN - KING STUDIO - ACCESSIBLE

SCALE: 1/4" = 1'-0"

## POWER PLAN - ONE BEDROOM SUITE

SCALE: 1/4" = 1'-0"

## POWER PLAN - ONE BEDROOM SUITE - ACCESSIBLE

SCALE: 1/4" = 1'-0"

## POWER PLAN - QUEEN QUEEN STUDIO

SCALE: 1/4" = 1'-0"

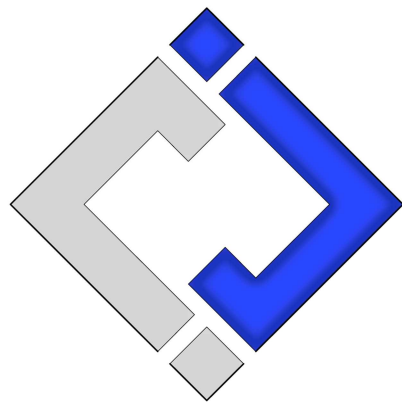
## POWER PLAN - QUEEN QUEEN STUDIO - CONNECTOR

SCALE: 1/4" = 1'-0"

## POWER PLAN - QUEEN QUEEN STUDIO - ACCESSIBLE

SCALE: 1/4" = 1'-0"





J-SQUARED  
ENGINEERING

2400 Bluff Creek Drive, Suite 101  
Columbia, Missouri 65201  
573.234.4492  
www.j-squaredeng.com

J2 PROJECT No: J21005

J2 DESIGN: ACW

ISSUE TITLE DATE

CITY SUBMISSION 04 / 17 / 2024

REVISION 4 09 / 13 / 2024

MECHANICAL - ELECTRICAL - PLUMBING DESIGN DRAWINGS FOR:

## Home 2 Suites By Hilton

Village at Discovery Park Lot 2  
Lee's Summit, MO

AHJ APPROVAL STAMP

SHEET TITLE

FIRE ALARM AND  
SECURITY PLAN - FIRST  
FLOOR

SHEET NUMBER

FS101

### FIRE ALARM & SECURITY SYSTEM SPECIFICATIONS

1. FIRE ALARM SYSTEM SHALL BE AN ADDRESSABLE SYSTEM THAT IS NONCODED, UL-LISTED, WITH MULTIPLEX SIGNAL TRANSMISSION AND HORN/STROBE EVACUATION.
2. EVERY FIRE ALARM SYSTEM COMPONENT SHALL BE UL-LISTED AND UL-CERTIFIED, TESTED BY MANUFACTURERS AS A COMPLETE SYSTEM, AND MEET ALL APPLICABLE REQUIREMENTS OF NFPA 72.
3. ALL FIRE ALARM WIRING TO BE PLENUM RATED.
4. ALL INITIATING DEVICES INSTALLED IN UNCONDITIONED SPACES SHALL BE CONVENTIONAL DEVICES SUITABLE FOR USE IN EXTREME HIGH AND LOW TEMPERATURES AND HIGH HUMIDITY. SUCH DEVICES SHALL BE SUPERVISED BY ADDRESSABLE MONITOR MODULES LOCATED IN CONDITIONED SPACES.
5. QUANTITIES, TYPES, AND LOCATIONS OF INITIATING DEVICES AND OUTPUT MODULES FOR INTERCONNECTION WITH FIRE SUPPRESSION MUST BE COORDINATED WITH CONTRACTORS THAT ARE RESPONSIBLE FOR THOSE SYSTEMS.
6. ALL SECURITY CAMERA MONITORS SHALL BE LOCATED OUT GUEST'S VIEW.
7. SEE SHEET EP401 FOR GUESTROOM FIRE ALARM SYSTEM DETAILS/REQUIREMENTS.

### FIRE ALARM DEVICE TYPICAL LOCATIONS:

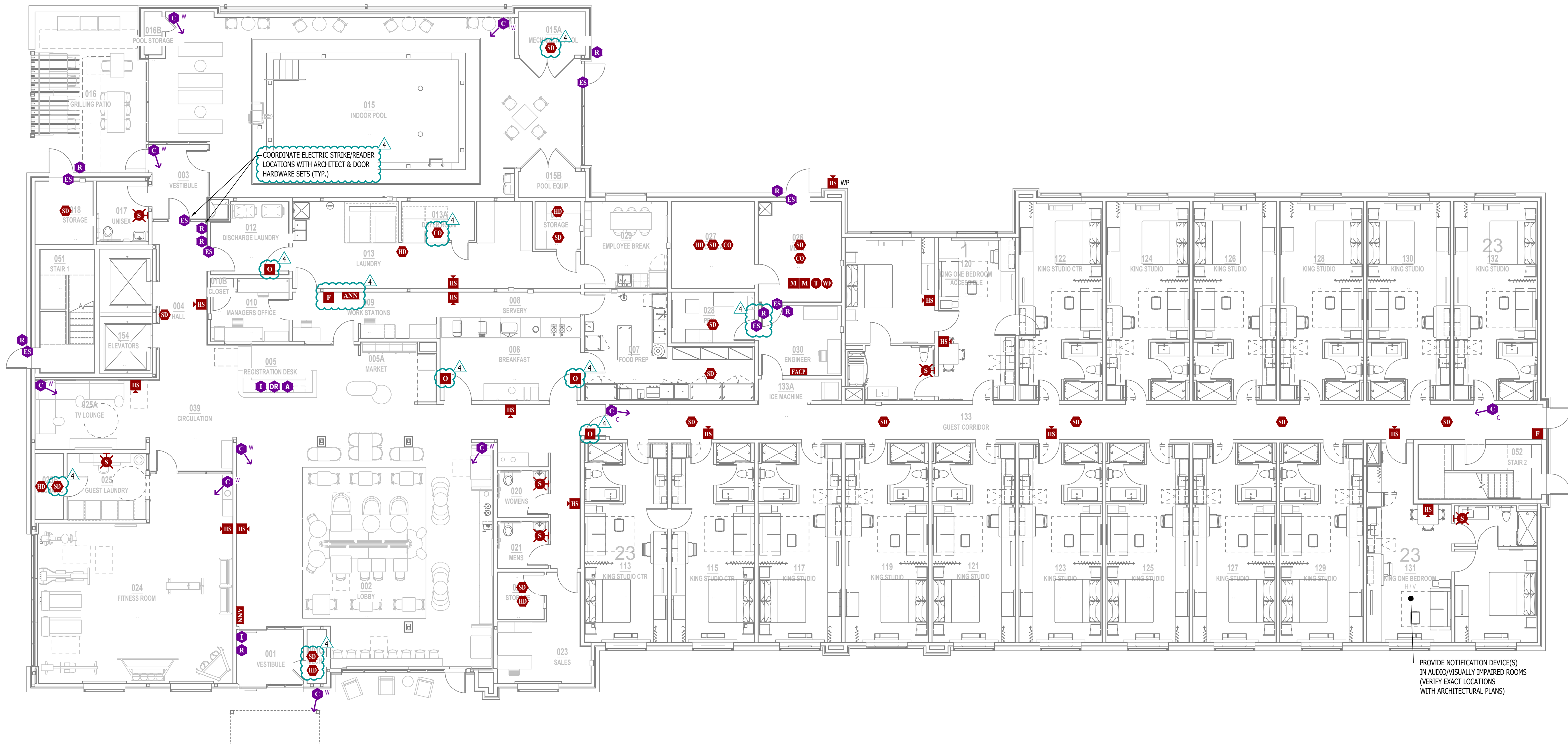
1. VERIFY EXACT LOCATIONS WITH LATEST NFPA REQUIREMENTS;
2. CEILING MOUNTED SMOKE / HEAT DETECTORS:
  - 2.1. MUST BE MOUNTED AT LEAST 36" FROM HVAC GRILLES / DIFFUSERS
  - 2.2. MUST BE LOCATED AT LEAST 4" FROM WALL/CEILING INTERSECTIONS (MEASURED FROM EDGE OF DEVICE)
3. WALL MOUNTED SMOKE / HEAT DETECTORS:
  - 3.1. MUST BE LOCATED AT LEAST 4" FROM WALL/CEILING INTERSECTIONS (MEASURED FROM EDGE OF DEVICE)
  - 3.2. MUST BE LOCATED WITHIN AT LEAST 12" FROM WALL/CEILING INTERSECTION (MEASURED FROM EDGE OF DEVICE)
4. MANUAL PULL STATIONS:
  - 4.1. MUST BE LOCATED WITHIN 5' OF EXTERIOR DOORWAY (MEASURED FROM CENTER OF PULL STATION TO NEAREST EDGE OF DOOR)
  - 4.2. MUST BE LOCATED BETWEEN 42" AND 54" A.F.F. (MEASURED FROM FINISH FLOOR TO CENTER OFF PULL STATION)
5. MAGNETIC DOOR HOLDER:
  - 5.1. MUST BE LOCATED 6" BELOW TOP OF DOOR (MEASURED FROM TOP OF DOOR TO TOP OF DOOR HOLDER)
  - 5.2. MUST BE LOCATED DOOR WIDTH MINUS THREE INCHES FROM DOOR (MEASURED FROM NEAREST EDGE OF HOLDER TO NEAREST EDGE OF DOOR).
6. FIRE ALARM CONTROL PANEL:
  - 6.1. MUST BE LOCATED AT MAXIMUM OF 72" A.F.F. (MEASURED FROM FINISH FLOOR TO TOP OF FIRE ALARM CONTROL PANEL)
7. FIRE ALARM ANNUNCIATOR:
  - 7.1. MUST BE LOCATED AT MAXIMUM OF 60" A.F.F. (MEASURED FROM FINISH FLOOR TO TOP OF FIRE ALARM ANNUNCIATOR PANEL)
8. WALL MOUNTED STROBE DEVICES (VISUAL ONLY):
  - 8.1. MUST BE LOCATED AT 84" A.F.F. (MEASURED FROM FINISH FLOOR TO BOTTOM OF BACK BOX)
  - 8.2. MUST BE LOCATED AT MOST 24" FROM WALL/CEILING INTERSECTION WITHIN HANDICAP BEDROOMS (MEASURED FROM WALL/CEILING INTERSECTION TO BOTTOM OF BACK BOX)
9. WALL-MOUNTED HORN / STROBE DEVICES (AUDIBLE & VISUAL):
  - 9.1. MUST BE LOCATED AT 84" A.F.F. (MEASURED FROM FINISH FLOOR TO BOTTOM OF BACK BOX)

### FIRE ALARM PLAN SYMBOL LEGEND

<b>F</b>	MANUAL PULL STATION
<b>M</b>	MODULE
<b>O</b>	OUTPUT MODULE
<b>SD</b>	SMOKE DETECTOR
<b>HD</b>	HEAT DETECTOR
<b>CO</b>	CARBON MONOXIDE DETECTOR
<b>S</b>	STROBE - CEILING MOUNT
<b>S</b>	STROBE - WALL MOUNT
<b>HS</b>	HORN STROBE - WALL MOUNT
<b>HS</b>	HORN STROBE - CEILING MOUNT
<b>SS</b>	SPEAKER STROBE - WALL MOUNT
<b>SS</b>	SPEAKER STROBE - CEILING MOUNT
<b>T</b>	TAMPER SWITCH
<b>WF</b>	WATER FLOW SWITCH
<b>FACP</b>	FIRE ALARM CONTROL PANEL
<b>ANN</b>	FIRE ALARM ANNUNCIATOR

### SECURITY PLAN SYMBOL LEGEND

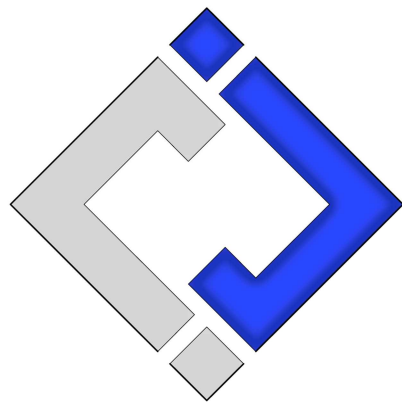
<b>R</b>	READER
<b>M</b>	MOTION DETECTOR
<b>KP</b>	ALARM KEYPAD
<b>DC</b>	DOOR CONTACT
<b>P</b>	PANIC
<b>GB</b>	GLASS BREAK SENSOR
<b>ES</b>	ELECTRIC STRIKE
<b>I</b>	INTERCOM
<b>DR</b>	DOOR RELEASE
<b>A</b>	DURESS ALARM BUTTON (WITH SILENT ALARM IN ACCORDANCE WITH HILTON DESIGN STANDARD 2514.09.1.2.B)
<b>BURG</b>	BURGLAR PANEL
<b>C W</b>	WALL MOUNT CAMERA (ARROW INDICATES VIEW DIRECTION)
<b>C C</b>	CEILING MOUNT CAMERA (ARROW INDICATES VIEW DIRECTION)



FIRE ALARM AND SECURITY PLAN - FIRST FLOOR

SCALE: 1/8" = 1'-0"





J-SQUARED  
ENGINEERING

2400 Bluff Creek Drive, Suite 101  
Columbia, Missouri 65201  
573.234.4492  
www.j-squaredeng.com

12 PROJECT No: J21005

12 DESIGN: ACW

ISSUE TITLE DATE

CITY SUBMISSION 04 / 17 / 2024

REVISION 1 - CITY RESPONSE 05 / 17 / 2024

CITY & BRAND RESPONSE 06 / 14 / 2024

REVISION 4 09 / 13 / 2024

4

MECHANICAL - ELECTRICAL - PLUMBING DESIGN DRAWINGS FOR:

# Home 2 Suites By Hilton

Village at Discovery Park Lot 2  
Lee's Summit, MO

AHJ APPROVAL STAMP

SHEET TITLE

SANITARY SEWER PLAN  
- FIRST FLOOR

SHEET NUMBER

PS101

## SANITARY SEWER PLAN SYMBOL LEGEND

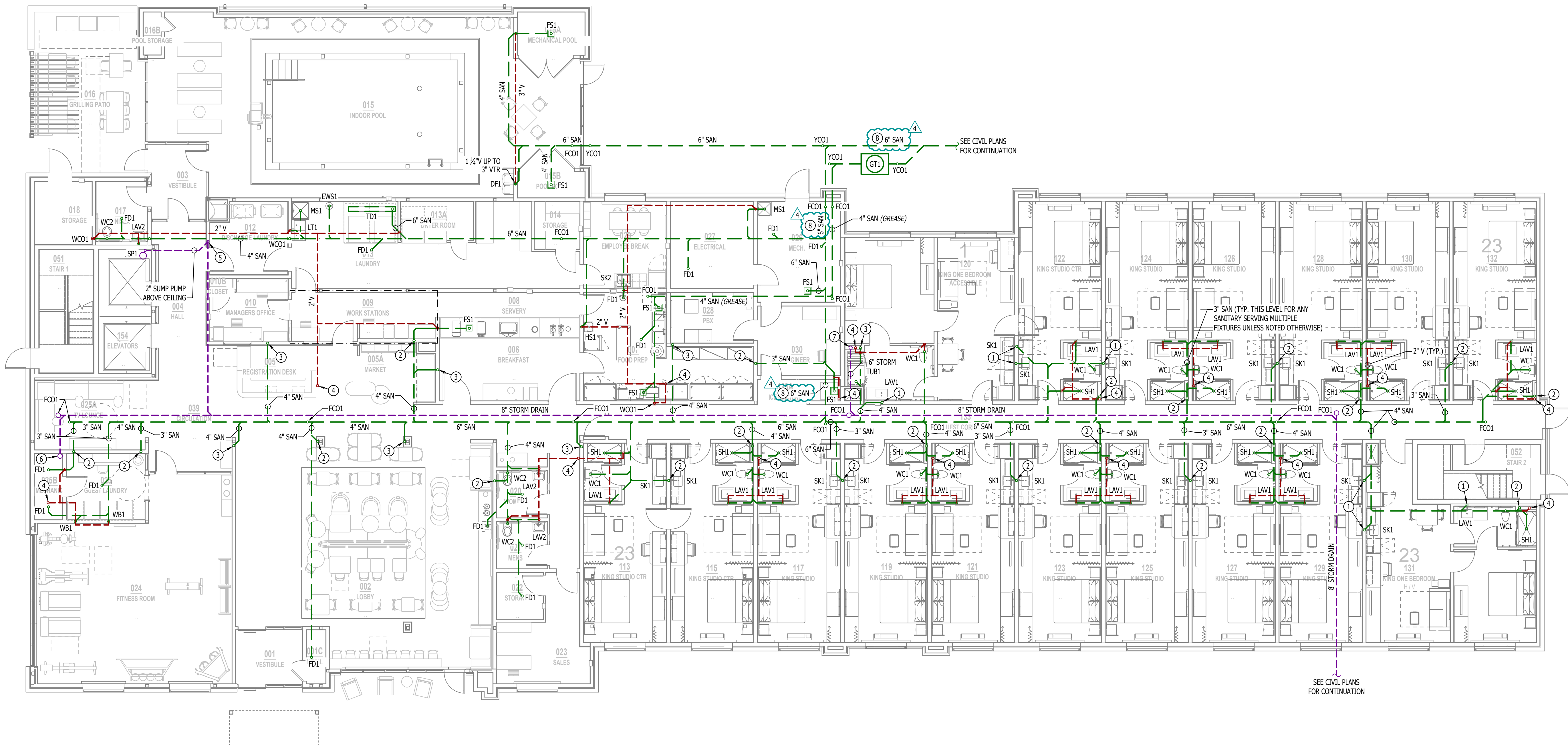
- SANITARY SEWER PIPING
- VENT PIPING
- STORM DRAIN PIPING
- PIPING TURNED DOWN / TURNED UP
- TIE INTO EXISTING

## SANITARY SEWER PLAN GENERAL NOTES:

- SEE SHEET PS01 FOR ADDITIONAL PLUMBING NOTES, DETAILS, & SCHEDULES.

## SANITARY SEWER PLAN KEY NOTES:

- 2" SAN DOWN FROM SECOND FLOOR.
- 3" SAN DOWN FROM SECOND FLOOR.
- 4" SAN DOWN FROM SECOND FLOOR.
- 2" VENT UP TO SECOND FLOOR
- 2" SUMP PUMP INDIRECT DISCHARGE TO HUB DRAIN ACCESSIBLE ABOVE LAY IN CEILING IN DISCHARGE LAUNDRY ROOM 012.
- 8" PRIMARY STORM DRAIN DOWN FROM ROOF.
- 6" PRIMARY STORM DRAIN DOWN FROM ROOF.
- 6" SANITARY WITH 1/2" PER FOOT DOWNWARD SLOPE.



## SANITARY SEWER PLAN - FIRST FLOOR

SCALE: 1/8" = 1'-0"