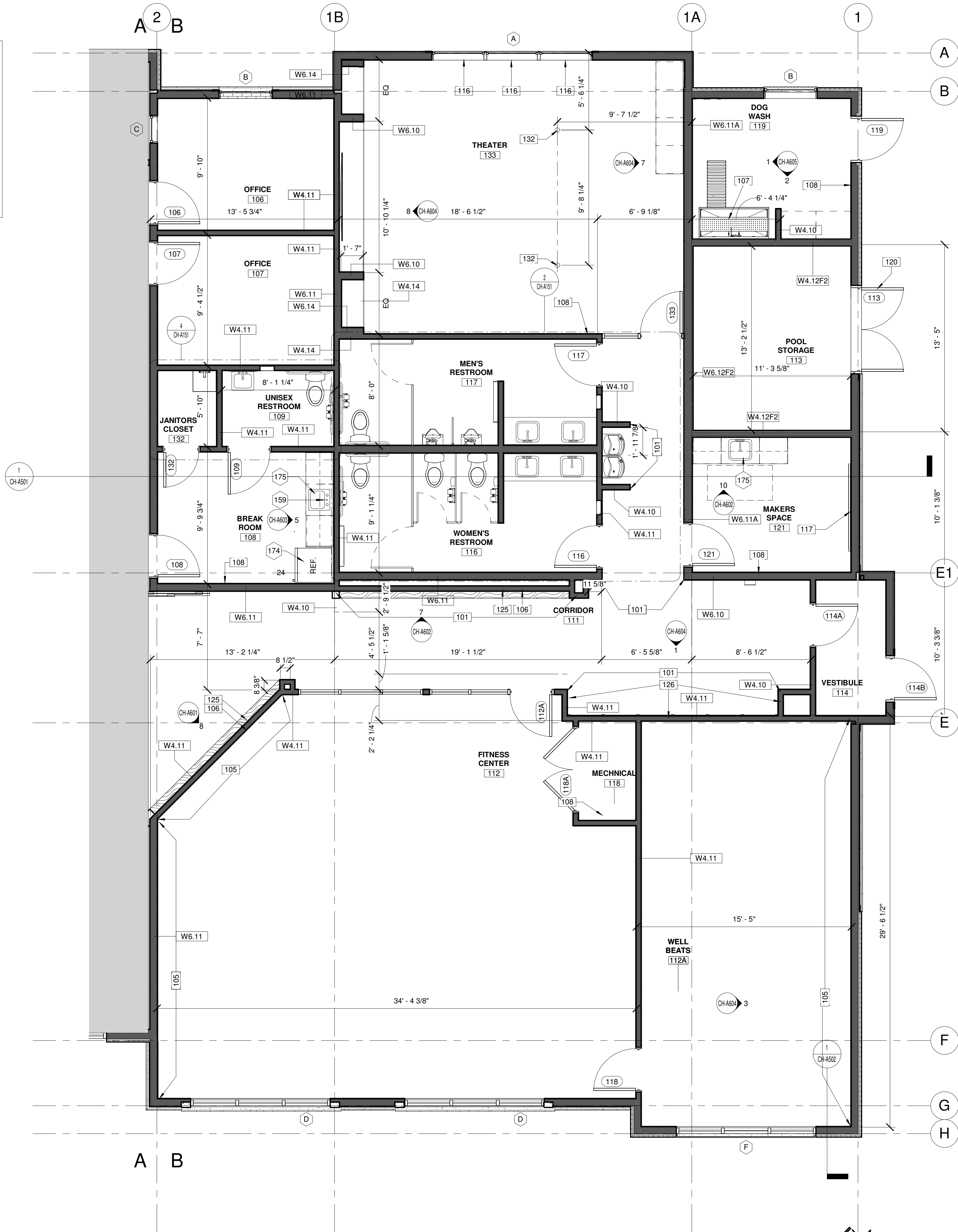


KEY PLAN
SCALE: NTS



1 CONSTRUCTION PLAN - SIDE B
SCALE: 1/4" = 1'-0"

CONSTRUCTION PLAN LEGEND

- NOT IN CONTRACT, IF APPLICABLE
- PARTIAL HEIGHT WALL
- NEW CONSTRUCTION ITEM
- XXXX WALL TYPE
- X WINDOW TYPE

GENERAL CONSTRUCTION NOTES

- REFER TO SHEET CH-A000 WALL TYPES AND CH-A001 FOR DOOR AND WINDOW TYPES.
- PROVIDE BLOCKING IN WALLS TO ACCOMMODATE ALL CASEWORK AND WALL MOUNTED EQUIPMENT.
- REFER TO ELECTRICAL LOCATION PLANS FOR MORE INFORMATION.
- ALL WORK IS TO BE COMPLETED IN STRICT ACCORDANCE WITH ALL APPLICABLE CODES, ORDINANCES, RULES, REGULATIONS AND STANDARDS, INCLUDING, BUT NOT LIMITED TO: THE AMERICANS WITH DISABILITIES ACT (ADA), INTERNATIONAL BUILDING CODE, AND APPLICABLE TRADE STANDARDS. ALL APPLICABLE RULES AND REGULATIONS ARE TO BE THE MOST CURRENT ADOPTED EDITIONS.
- THE CONTRACTOR IS RESPONSIBLE FOR FIELD VERIFYING ALL CONDITIONS AND DIMENSIONS PRIOR TO THE START OF WORK. REPORT ANY DISCREPANCIES TO THE ARCHITECT/DESIGNER IMMEDIATELY.
- THE CONTRACTOR IS RESPONSIBLE FOR OBTAINING ALL STATE AND LOCAL PERMITS REQUIRED FOR COMPLETION OF THIS PROJECT.
- ALL WORK IS TO BE COORDINATED BY THE GENERAL CONTRACTOR TO ASSURE ADEQUATE FIT, FINISH, SYSTEM OPERATION, AND FULL COMPLETION OF THE WORK, INCLUDING SERVICE REQUIREMENTS OF THE OWNERS F.F.E.
- ALL DIMENSIONS ARE SHOWN ON THE DRAWINGS. ANY DIMENSIONS NOT SHOWN OR DEEMED QUESTIONABLE ARE TO BE VERIFIED WITH THE ARCHITECT/DESIGNER. DO NOT SCALE DIMENSIONS ON THE DRAWINGS. ALL DIMENSIONS ARE TO THE FACE OF NEW STUD, MASONRY/CONCRETE WALLS, CENTERLINE OF COLUMNS/WINDOWS, OR FINISH FACE OF EXISTING WALL UNLESS NOTED OTHERWISE.
- CONTRACTOR IS TO SIGN EACH SHOP DRAWING SUBMITTAL AFTER IT HAS BEEN REVIEWED, APPROVED, AND THE CONTRACTOR COORDINATION HAS BEEN PERFORMED.
- FINISHED DOOR OPENINGS IN NEW PARTITIONS SHALL BE SET 4" FROM ADJACENT PERPENDICULAR PARTITIONS, UNLESS OTHERWISE NOTED.
- ALL FINISH CARPENTRY IS TO BE COMPLETED IN STRICT ACCORDANCE WITH A.W.I. STANDARDS, PREMIUM GRADE.
- ALL FIRE EXTINGUISHER CABINET LOCATIONS ARE TO BE COORDINATED WITH THE CONTRACTOR, DESIGNER AND THE LOCAL FIRE OFFICIALS PRIOR TO INSTALLATION.
- CONTRACTOR(S) SHALL PROVIDE ALL NECESSARY LABOR, MATERIALS, AND EQUIPMENT FOR THE WORK IN THESE DOCUMENTS, UNLESS CLEARLY NOTED "NOT IN CONTRACT" (N.I.C.).
- ALL PLUMBING ITEMS AND/OR EQUIPMENT ITEMS ARE TO BE COORDINATED AND VERIFIED WITH INTERIOR ELEVATIONS PRIOR TO ROUGH-IN. ANY DISCREPANCIES SHALL BE COORDINATED WITH THE DESIGNER.
- REFER TO CH-G052 FOR MOUNTING HEIGHTS ON ALL TOILET ACCESSORIES AND FIXTURES AS REQUIRED.
- SUBMIT THE REQUIRED NUMBER OF SUBMITTALS FOR DESIGNER REVIEW AND APPROVAL PLUS ONE EXTRA COPY FOR DESIGNERS RECORDS.
- CONTRACTOR TO INSTALL MAXIMUM OCCUPANCY SING FOR THE CLUBHOUSE ASSEMBLY AREAS AND POOL/POOL DECK.

CONSTRUCTION PLAN KEYNOTES

- ALIGN.
- MIRRORS IN THIS LOCATION TO BE 7'-0" TALL; MOUNTED 1'-0" AFF; CUT EACH GLASS PANEL TO NO GREATER THAN 4'-0" WIDE; EACH PANEL TO BE EQUAL IN SIZE; TREAT EACH EXPOSED MIRROR EDGE WITH 1/2" METAL CHANNEL FRAME.
- STAIN GRADE OAK PLYWOOD FRAMING FOR FUTURE GREEN WALL IN THIS LOCATION
- DOG WASH TO BE: GROOMER'S BEST ADA WALK-THRU TUB 24" D X 58" W
- INSTALL COAT HOOKS IN THIS LOCATION. SPEC: DESIGN HOUSE, DOUBLE HAT AND COAT HOOK 3", SATIN NICKEL, #202879 (ROOM 121 - QTY. 3, ROOM 112 - QTY. 6, ROOM 118 - QTY. 6, ROOM 109 - QTY. 1)
- BOTTOM WINDOW IN THIS LOCATION TO RECEIVE ROLLER SHADE. HUNTER DOUGLAS, DESIGNER SERIES DUOLITE, AKRON, PASSIVE.
- 4'-0" X 6'-0" PEG BOARD MOUNTED TO WALL IN THIS LOCATION. FINISHES EDGES WITH TRIM, PAINTED RT-2, CENTERED ON WALL AND MOUNTED 4'-0" AFF. PROVIDE BLOCKING AS REQUIRED.
- SIGNAGE ON EXTERIOR DOOR TO STATE "POOL CHEMICAL STORAGE" IN ACCORDANCE TO NFPA 704. PROVIDE 704 PLACARD ON DOOR FACE.
- WALL MOUNTED EQUIPMENT IN THIS LOCATION. SEE ELEVATION FOR MOUNTING HEIGHTS AND DETAILS
- INSTALL WALL BASE AFTER THE INSTALLATION OF THE BANQUETTE IN THIS LOCATION BY FURNITURE PROVIDER
- FLOOR CORE IN THIS LOCATION. REFER TO MEP FOR MORE INFORMATION.

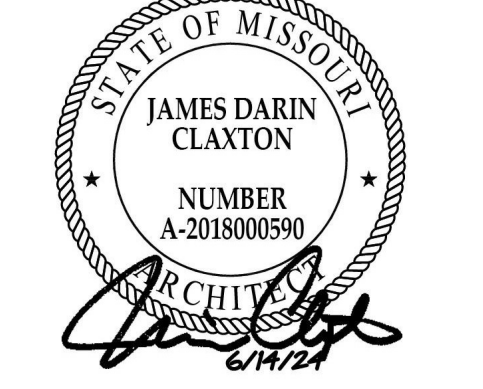
EQUIPMENT KEYNOTES

- BREAKROOM FAUCET TO BE: ELKAY ALLURE SINGLE HOLE KITCHEN FAUCET WITH LEVER HANDLE, LK79218SS, STAINLESS STEEL FINISH
- KITCHEN REFRIGERATOR TO BE: SUMMIT APPLIANCES, BKRF18SS, STAINLESS STEEL FINISH, HANDLE TO BE ON RIGHT SIDE OF REFRIGERATOR
- KITCHEN SINK TO BE: KOHLER, VAULT 25" X 22" SINGLE BOWL, DUAL UNDERMOUNT KITCHEN SINK WITH SINGLE FAUCET HOLE, K-3894, STAINLESS STEEL FINISH

MITSCH DESIGN
200 S. Rangeline Rd. | Suite 226
Carmel, Indiana 46032
317.573.2222
www.mitschdesign.com



EVREN APARTMENTS
NEW CONSTRUCTION
EVREN APARTMENTS CLUBHOUSE
LEE'S SUMMIT, MISSOURI
PERMIT SET



MD PROJECT #:	24097		
DRAWN BY:	CR		
CHECKED BY:	RB, JS		
PRELIMINARY PRICING SET	-		
PERMIT SET	-		
06/14/2024			
REVISION SCHEDULE			
#	DATE	DESCRIPTION	
1	01/14/2025	CITY RESPONSE	

ALL IDEAS, DESIGNS AND PLANS (ORIGINAL WORKS OF AUTHORSHIP) FIXED IN A TANGIBLE MEDIUM OF EXPRESSION, INDICATED OR PRESENTED BY THESE DRAWINGS AND DOCUMENTS ARE OWNED BY, AND ARE THE PROPERTY OF MITSCH DESIGN. ALL RIGHTS RESERVED, EXCEPT FOR USES EXPRESSLY PERMITTED IN WRITING.

CONSTRUCTION PLAN -
SIDE B

CH-A103