



Project Lees Summit-MSHP



Unit Summary

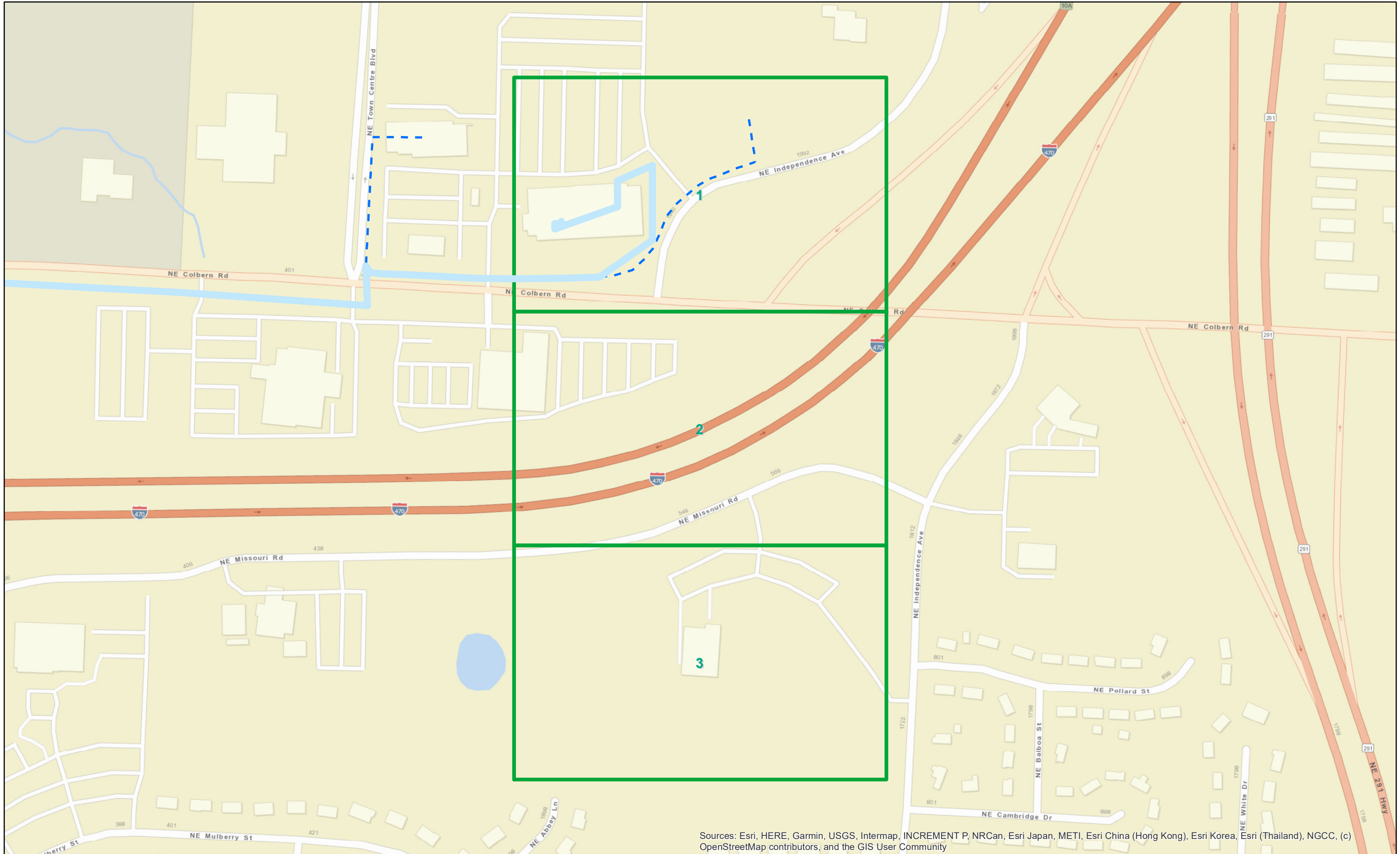
12/30/2024

Project: Lees Summit-MSHP

Description	Part Number	Account Code	Preferred Vendor	Total Waste	Total Used	Total Order
BD3			TBD	0	1	1
BM2(5/8)(8)			TBD	0	1	1
BM2C			TBD	0	3	3
BM53			TBD	0	1	1
HBFO(24)			TBD	0	1	1
HO-1			TBD	0	18	18
UD(1x1x1.25)			TBD	0	520	520
UH-1			TBD	0	1	1
UO(24)			TBD	0	520	520
UO(24)(HH Loop)			TBD	0	150	150
UOIE(24)			TBD	0	160	160
WUH			TBD	0	1	1

Sheet Index

Lees Summit-MSHP



Description	1	2	3	4																Quantity Used
BD3	1																			1
BM2(5/8)(8)	1																			1
BM2C	2			1																3
HBFO(24)	1																			1
HO-1	12			6																18
UO(24)(HH Loop)	50		100																	150
WUH	1																			1
UD(1x1x1.25)		510	10																	520
UO(24)		510	10																	520
BM53			1																	1
UH-1			1																	1
UOIE(24)				160																160

BlueBird

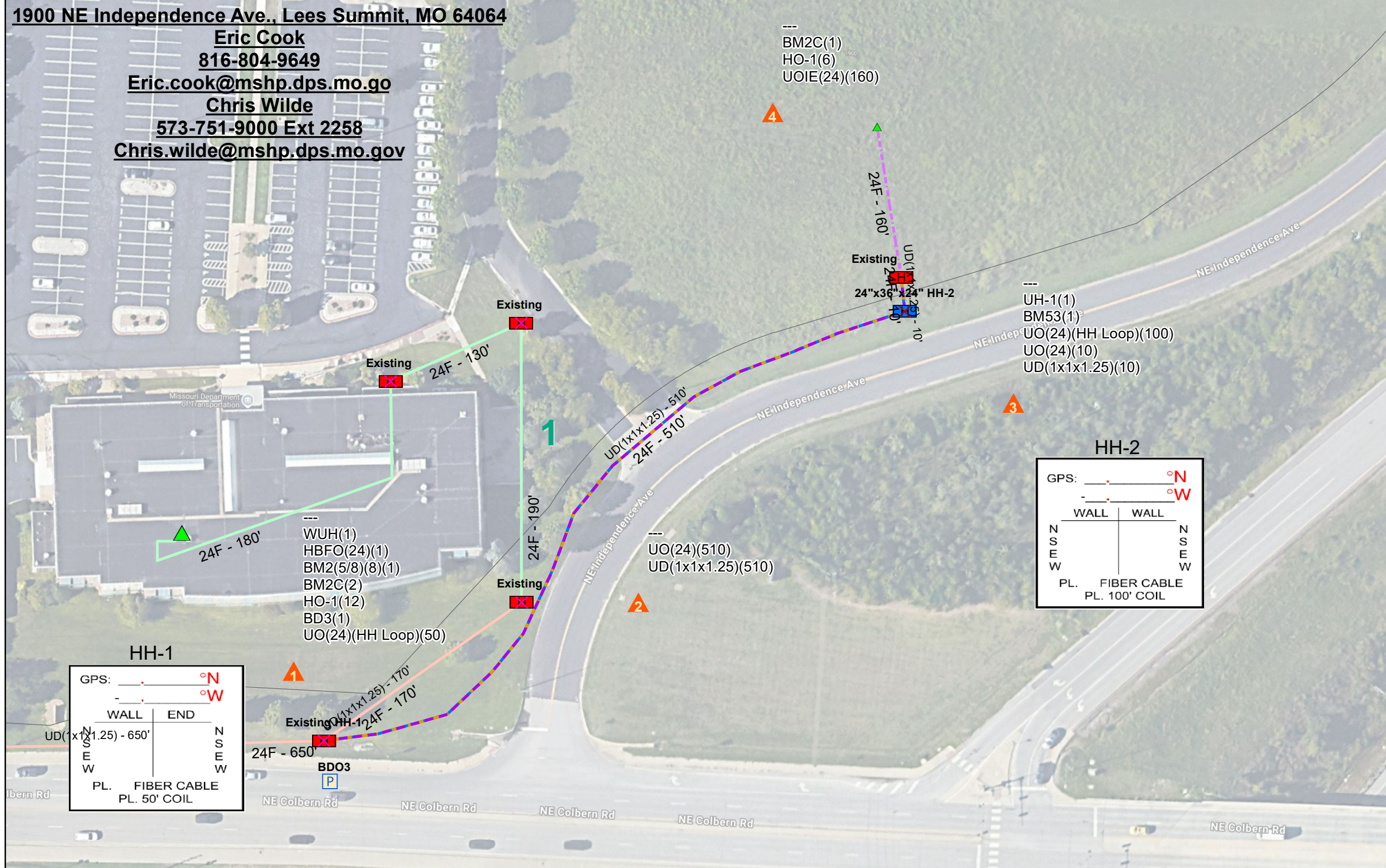
Sheet: 1 of 3

County: Jackson

Exchange: Lee's Summit

As Of: 12/30/2024

Date Approved:



Legend

Additional Cable type

- HHcoil(100)
- HHcoil(50)

Splice Point Subtype, Status

- Handhole, Existing
- Handhole, Proposed
- Pedestal, Proposed
- Structure, Existing
- Structure, Proposed

Cable Status, class, Used As

- Existing, UOIE, Distribution
- Existing, UO, Distribution
- Proposed, UOIE, Distribution
- Proposed, UO, Distribution

Path Status, Subtype

- Existing, UD(1x1x1.25)
- Proposed, UD(1x1x1.25)

Path Access Subtype

- Handhole

1 inch = 75 feet

N

Sources: Esri, HERE, Garmin, USGS, Intermap,

BLUEBIRD NETWORK

Drafted by **UtiliSource**

