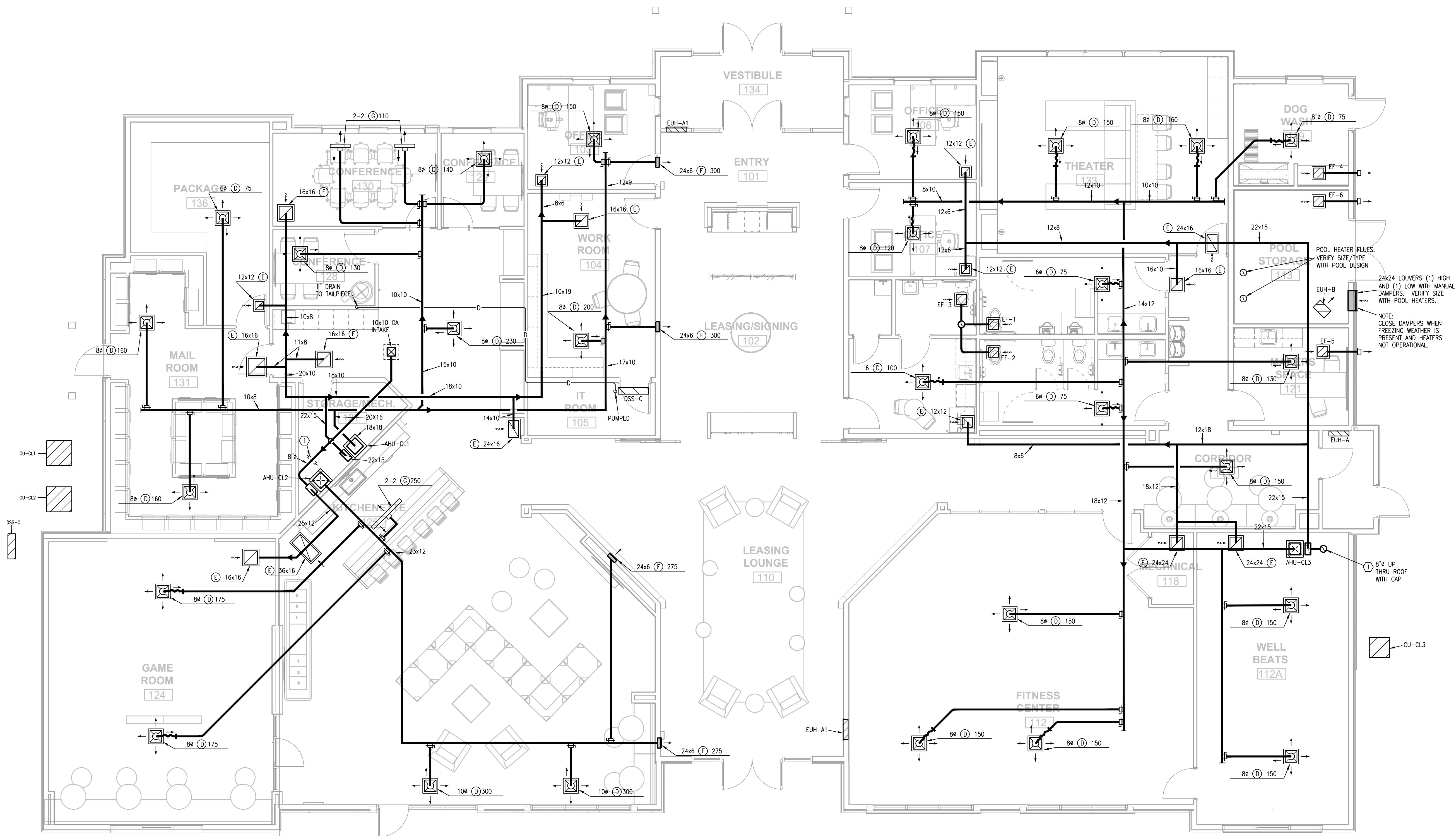


- NOTES:
1. ALL INDIVIDUAL BRANCH DUCTS ARE THE SIZE OF THE DIFFUSER NECK LISTED AND HAVE A MANUAL BALANCING DAMPER WHERE NOT INTEGRAL WITH THE DIFFUSER.
 2. SEE THE ARCHITECTURAL, LIGHTING AND STRUCTURAL DRAWINGS FOR CLEARANCES.
 3. MAINTAIN 3 FEET CLEARANCE IN EXHAUST DUCTS TO BUILDING OPENINGS AND 10 FEET TO AIR INTAKES.
 4. ROUTE NO DUCTS OVER ELECTRICAL EQUIPMENT.
 5. FLEXIBLE DUCT LENGTHS SHALL BE SUPPORTED AT 4' O.C. MIN AND SHALL BE AS STRAIGHT AS POSSIBLE AND NOT KINKED AT DIFFUSER OR TAKE-OFF.
 6. MOUNT OUTDOOR CONDENSING UNITS ON 3 1/2" CONCRETE PRE-FABRICATED PADS. SEAL ALL DX/CONDUIT PENETRATIONS WATERTIGHT.
 7. ROUTE AHU CONDENSATE DRAINS TO FLOOR DRAINS.

- LEGEND:
- ① TO AUTO DAMPER AND BALANCING DAMPER, CONNECT TO RA.



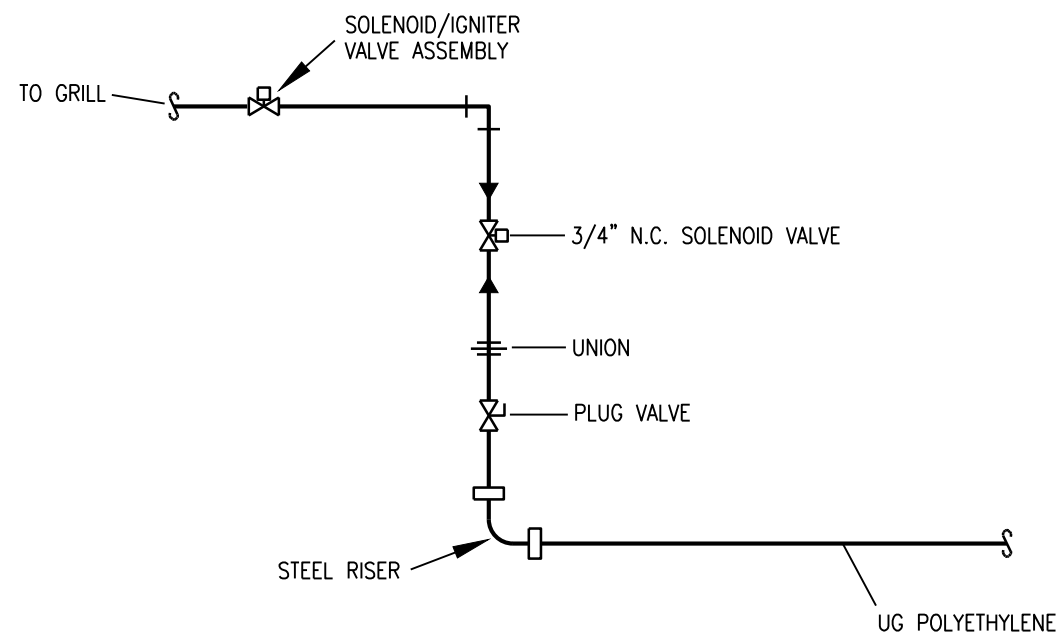
1 CLUBHOUSE PLAN
3/16"=1'-0"
HVAC
NORTH

EVREN APARTMENTS
NEW CONSTRUCTION
EVREN APARTMENTS CLUBHOUSE
LEE'S SUMMIT, MISSOURI
PERMIT SET

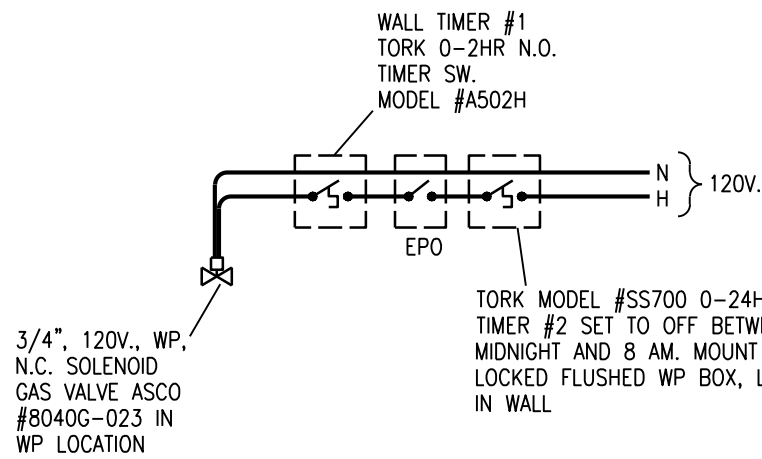
STATE OF MISSOURI
BEARER
NUMBER
PROFESSIONAL ENGINEER
5-31-2024

MD PROJECT #:	24097	
DRAWN BY:	CAD	
CHECKED BY:	RRB	
PRELIMINARY	-	
PRICING SET	5/31/2024	
PERMIT SET	-	
REVISION SCHEDULE		
#	DATE	DESCRIPTION

ALL IDEAS, DESIGNS AND PLANS (ORIGINAL WORKS OF AUTHORSHIP) FIXED IN A TANGIBLE MEDIUM OF EXPRESSION INDICATED OR PRESENTED BY THESE DRAWINGS AND DOCUMENTS ARE OWNED BY, AND ARE THE PROPERTY OF, MITSCH DESIGN. ALL RIGHTS RESERVED, EXCEPT FOR USES EXPRESSLY PERMITTED IN WRITING.



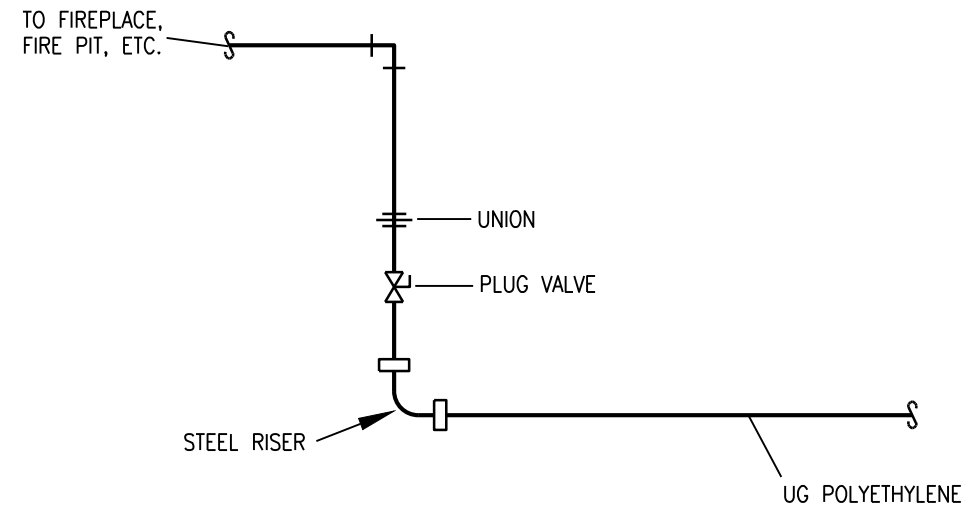
PIPING SCHEMATIC



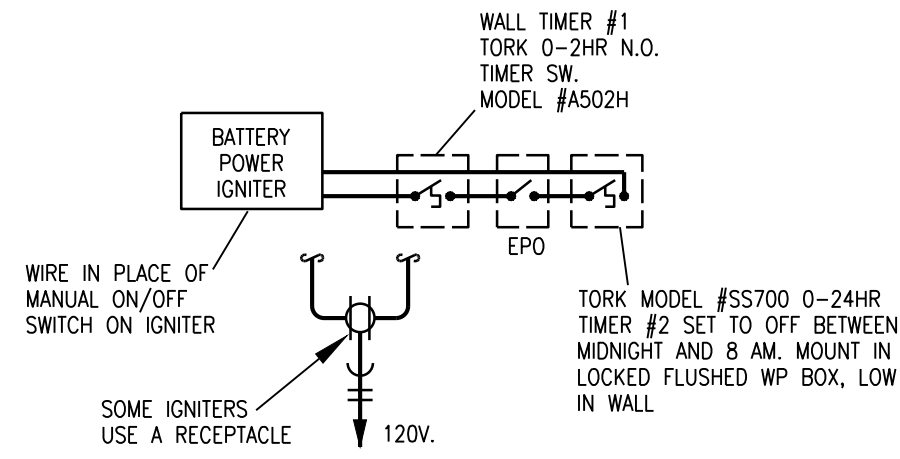
CONTROL SCHEMATIC

1 GAS CONTROL DETAIL

NO SCALE (GRILL)



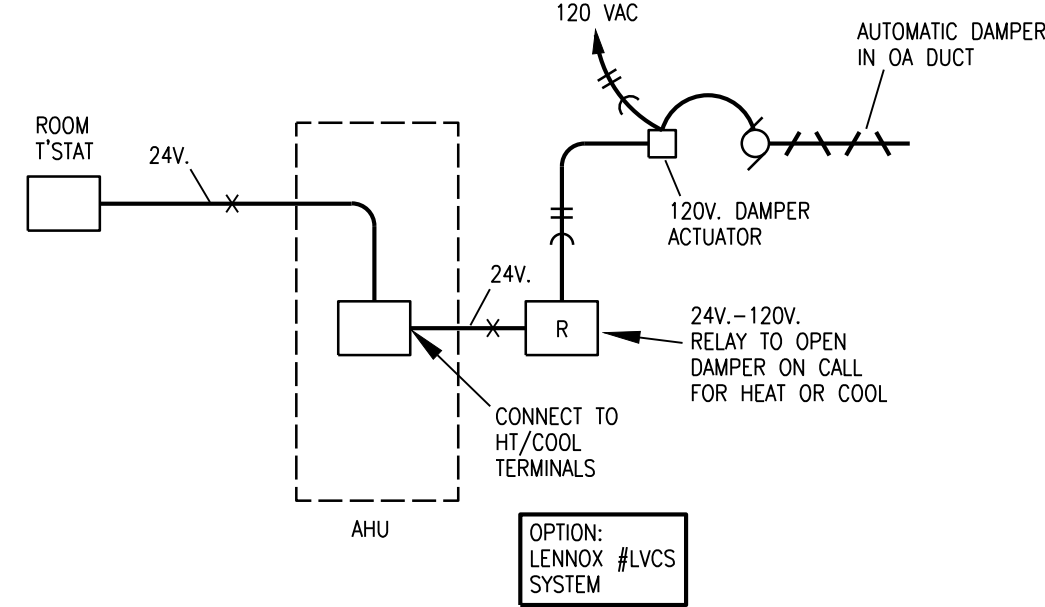
PIPING SCHEMATIC



CONTROL SCHEMATIC

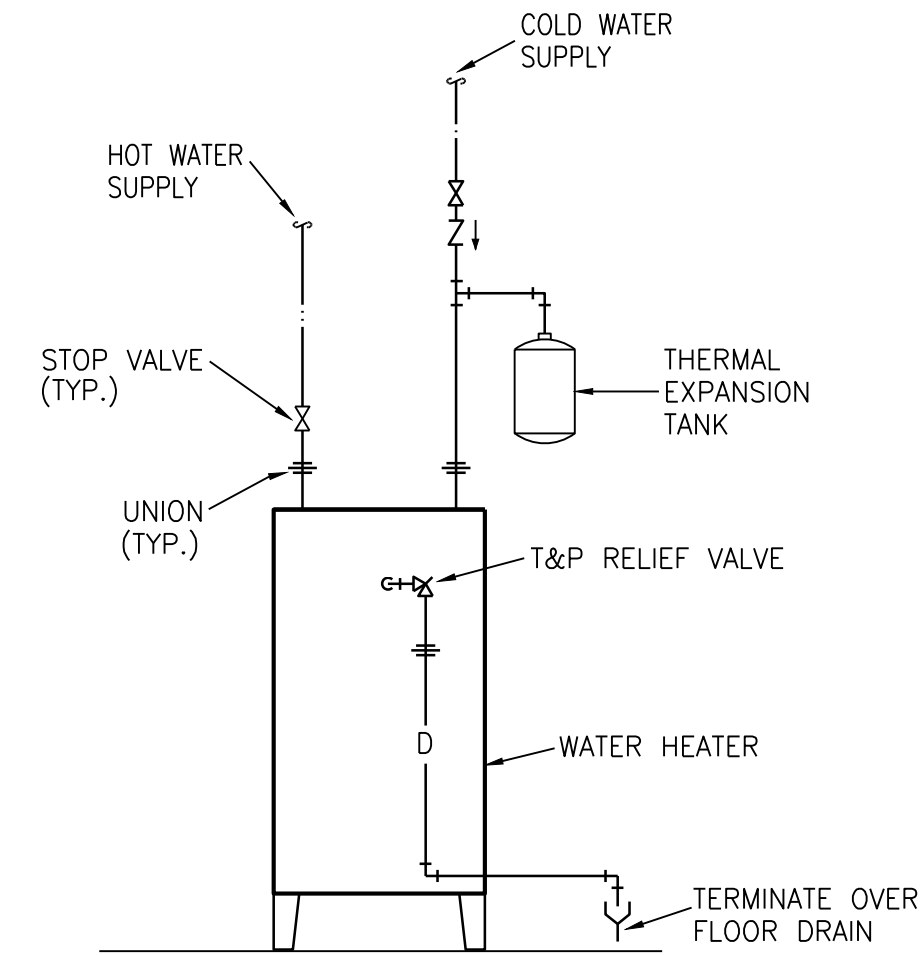
2 GAS CONTROL DETAIL

NO SCALE (FIRE PIT)



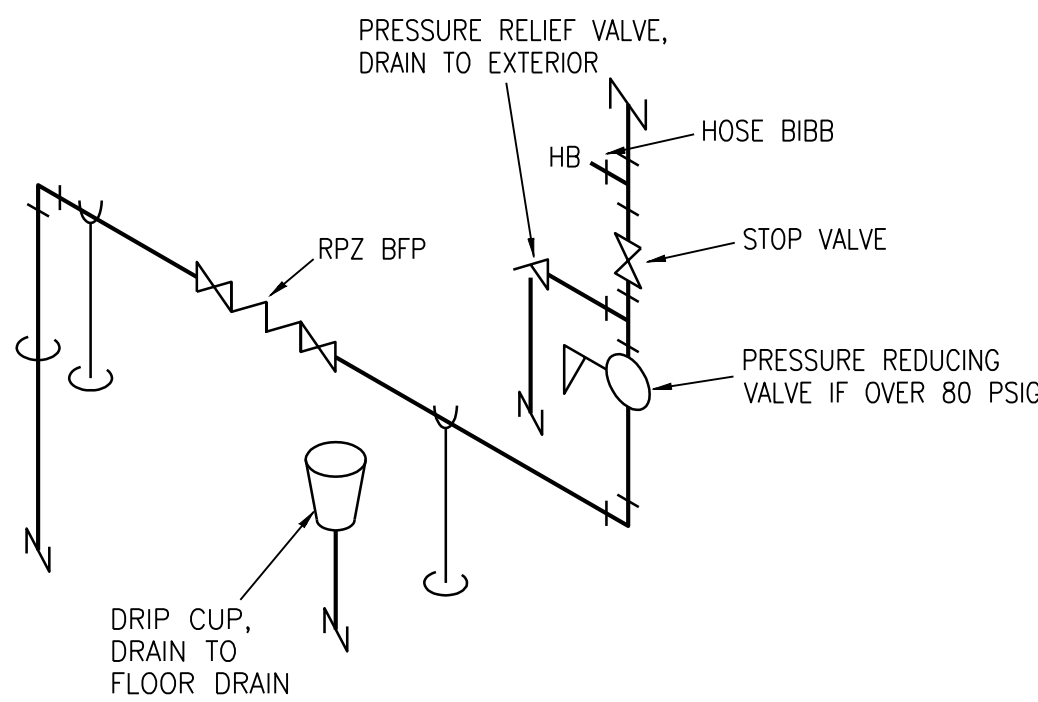
3 OUTSIDE AIR DAMPER CONTROL SCHEMATIC

NO SCALE



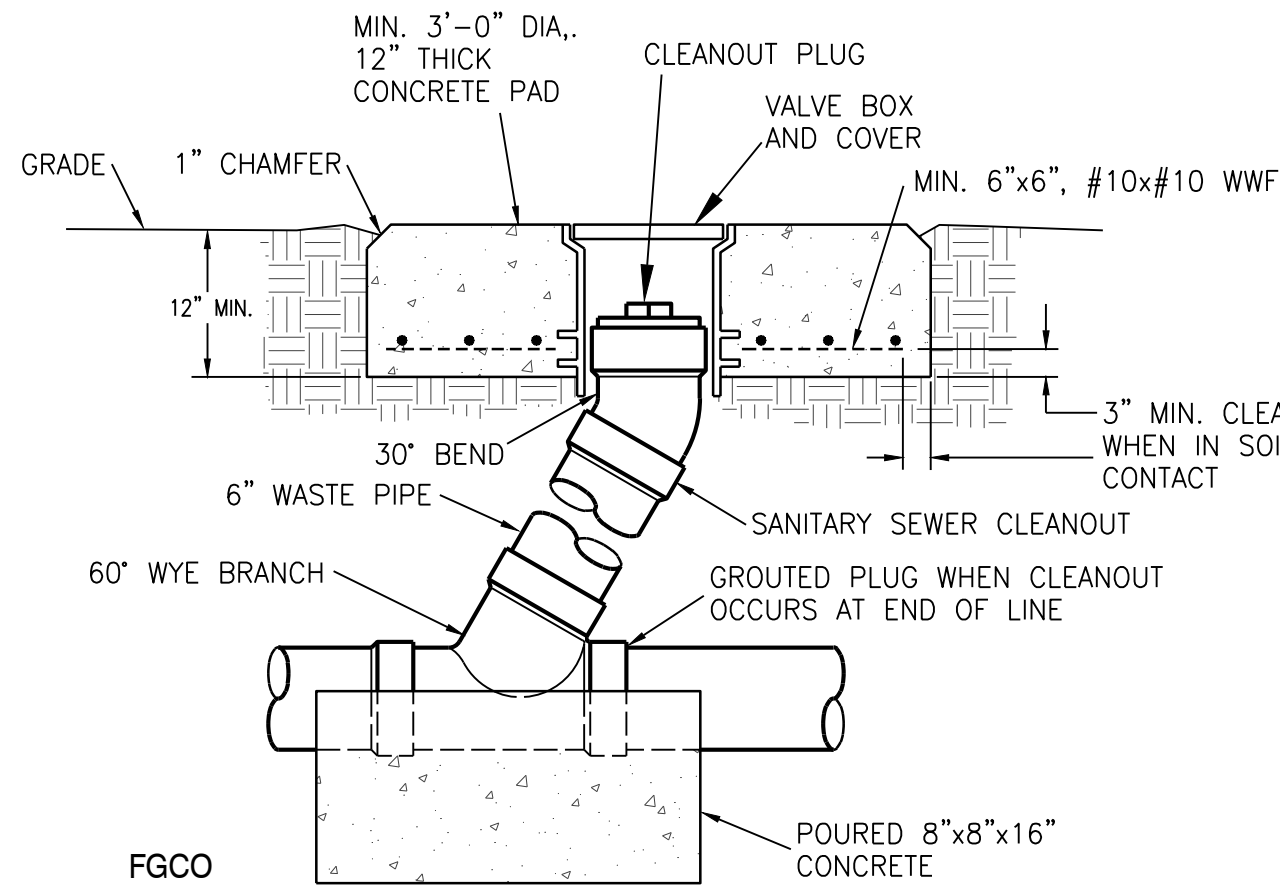
4 ELECTRIC WATER HEATER DETAIL

NO SCALE



5 DOMESTIC WATER RISER

NO SCALE



6 FLUSH GRADE CLEANOUT DETAIL

NO SCALE

MECHANICAL SYMBOLS LEGEND			
[P-1]	WATER CLOSET & TYPE (TYP. FOR ALL PLUMBING FIXTURES)	[Symbol]	FLEXIBLE PIPE CONNECTION
[Symbol]	WASTE LINE ABOVE EARTH (W.)	[Symbol]	MANUAL DAMPER
[Symbol]	WASTE LINE IN EARTH (W.)	[Symbol]	BACKDRAFT DAMPER
[Symbol]	CLEAN OUT	[Symbol]	AUTOMATIC DAMPER
FFCO	FLUSH FLOOR CLEAN OUT	[Symbol]	FIRE DAMPER
FGCO	FLUSH GRADE CLEAN OUT	[Symbol]	FIRE/SMOKE DAMPER
2" (T) FD	FLOOR DRAIN AND TYPE	[Symbol]	SMOKE DAMPER
RD	ROOF DRAIN	[Symbol]	GRILLE, REGISTER OR DIFFUSER, SIZE, TYPE & CFM
ORD	OVERFLOW DRAIN	[Symbol]	VOLUME EXTRACTOR AND TURNING VANES
2" (T) RD	ROOF DRAIN AND TYPE	[Symbol]	RETURN, EXHAUST OR FRESH AIR DUCT SECTION UP & DOWN
V	VENT LINE (V.)	[Symbol]	SUPPLY AIR DUCT SECTION UP AND DOWN
DCW	DOMESTIC COLD WATER SUPPLY (DCW)	[Symbol]	FLEXIBLE DUCT CONNECTION
DHW	DOMESTIC HOT WATER SUPPLY (DHW)	[Symbol]	ROUND OR RECTANGULAR DUCT
DHWR	DOMESTIC HOT WATER RETURN (DHWR)	[Symbol]	FLEXIBLE DUCT
HB/36"	HOSE BIBB AND MOUNTING HEIGHT	[Symbol]	THERMOSTAT
E4 WH	WALL HYDRANT	[Symbol]	REFRIGERANT LIQUID
F	FIRE LINE/STANDPIPE	[Symbol]	REFRIGERANT SUCTION
D	DRAIN LINE	AD	ACCESS DOOR
G	NATURAL GAS LINE	AF	ABOVE FINISHED FLOOR
[Symbol]	RISE & DROP IN PIPE WITH CUT-OFF VALVE	EA	EXHAUST AIR
[Symbol]	REDUCER	OA	OUTSIDE AIR
[Symbol]	CHECK VALVE	RA	RETURN AIR
[Symbol]	STOP VALVE	SA	SUPPLY AIR
[Symbol]	BALANCING VALVE/AUTOFLOW VALVE	VBS	VENT BELOW SLAB
[Symbol]	PLUG VALVE	VTR	VENT THRU ROOF
[Symbol]	2-WAY CONTROL VALVE OR SOLENOID VALVE	[Symbol]	CONNECT NEW TO EXISTING
[Symbol]	3-WAY CONTROL VALVE OR SOLENOID VALVE	[Symbol]	LOCKABLE GUARD
[Symbol]	PRESSURE REDUCING VALVE	VFD	VARIABLE FREQUENCY DRIVE
[Symbol]	STRAINER		
[Symbol]	UNION		

NOTES: ALL SYMBOLS SHOWN ABOVE MAY NOT APPEAR ON PLANS. REFER TO ELECTRICAL SYMBOLS LEGEND FOR ELECTRICAL SYMBOLS THAT MAY BE SHOWN ON MECHANICAL PLANS.

MD PROJECT #:	24097
DRAWN BY:	COO
CHECKED BY:	RRB
PRELIMINARY	
PERMIT SET	
REVISION SCHEDULE	5/31/2024
#	DATE
	DESCRIPTION

PLUMBING FIXTURE SCHEDULE											
Mark	Item	Model	Description	Individual Connections			Accessories				
				W	V	CW	HW	Supplies	Stops	Carrier	P-Trap
P-1P	Water Closet, Tank Type	Profo #1201WH with PF1400T	Floor-mounted standard height white vitreous china elongated bowl 1.6 gpf gravity type with Fluidmaster 400A flush mechanism and bolt covers. Provide solid plastic open front elongated white seat with integral bumpers, external check hinges with staine	3" or 4"	2"	1"		2			
P-1HP	Accessible Water Closet, Tank Type	Profo #1201WH with PF1400T	Floor-mounted ADA height white vitreous china elongated bowl 1.6 gpf gravity type with Fluidmaster 400A flush mechanism and bolt covers. Provide solid plastic open front elongated black seat with integral bumpers, external check hinges with stainless st	3" or 4"	2"	1"		2			
P-2P	Accessible Lavatory, Countertop	Kohler K-2882 with Delta Bowery	20" x 17" vitreous china countertop lavatory with overflow. Faucet is 4" o.c. single lever ADA handle, copper waterways, chrome finish, 1.5 GPM.	2"	1 1/2" or 2"	1/2"	1/2"	2, 4	1		1
P-2W	Lavatory, Wall-Hung	Kohler 2035-8-0 with Delta Bowery	20" x 18" vitreous china with high backsplash, overflow. Faucet is 4" o.c. single lever ADA handle, copper waterways, brushed nickel finish, 1.5 GPM.	2"	1 1/2" or 2"	1/2"	1/2"	2, 4	1	1	1
P-4DM	Maker Space Sink	Kohler K-3894 with Delta 9193-PN-DST	Stainless steel under-mount 20 ga dual bowl 25" X 22" X 6 5/16". Single handle faucet.	2"	2"	1/2"	1/2"	1	1		2
P-4HD	Accessible Kitchen Sink	Elkay ELUHAD311855 with Delta 9193-PN-DST	Stainless steel under-mount 20 ga dual bowl 33" x 22" x 6" deep with back outlet. Single handle faucet with pull-out sprayer, ISE Badger 1 disposer with cord/plug. Install per ADA clearances.	2"	2"	1/2"	1/2"	1	1		2
P-4B	Break room sink	Kohler K-3894 with Elkay LK7921SSS	Stainless steel under-mount 20 ga dual bowl 25" X 22" X 6 5/16". Single handle faucet.	2"	2"	1/2"	1/2"	1	1		2
P-6	Water Outlet Box	Guy Gray #BIM877QTS	Recessed non-metallic with two angle quarter turn stops. White vitreous china wall hung with 3/4" top spud, 1.0 gallon siphon jet flushing action. Mount rim per Architectural elevation. Flush valve to be 3/4" battery operated no-touch piston type with activation button.	2"	2"	1/2"	1/2"				
P-7	Urinal	Kohler K-4991-ER/Sloan Royal #8186	24" x 24" x 10" white molded stone with stainless steel integral drain, chrome plated brass wall mounted faucet with VB, integral stops, adjustable wall brace, pail hook, 3/4" hose threaded spout.	2"	2"	3/4"				3	
P-8	Janitor's Sink	Grainger #63CM with #8230	ADA Walk Thru 24" D X 58" W	2" or 3"	2"	1/2"	1/2"				2
P-11	Dog Wash	Flying Pig	ADA compliant dual height electric water cooler/bottle filler: Barrier free water cooler with two bubbler stations and bottle filling station providing 8 GPM of 50 degree water at 90 degree ambient. Front and side pushbars, filter, ADA compliant, lead f	2"	2"	1/2"	1/2"	1	1		2
P-13	Dual Height Drinking Fountain/Bottle Filler	Elkay EZH20 LZSTLBWSVRLK	Metering shut-off shower valve in chrome with fixed institutional showerhead.			1/2"					2
P-14	Exterior Shower	Symmons #4-420/4-151	Wall-mounted freeze-resistant fountain constructed of #14ga polished SS. Contoured front, front button, vandal-resistant.			1/2"		5			
P-15	Exterior Drinking Fountain	Elkay #EHWM14FPK									
Supplies	1 - Flexible braided stainless steel 2 - Flexible braided compression hose. 3 - Sloan Royal #186-1 auto flush valve 4 - Flexible braided compression hose with thermostatic mixing valve per ASSE 1070 5 - Exterior application, provide drain-sown capability and post placard in equipment room to drain during freezing temperatures.										
Stops	1 - Angle handle compression										
Carrier	1 - Steel tube floor-mounted in-wall carrier with arms										
P-Trap	1 - PVC with deep escutcheon 2 - PVC 3 - deep seal PVC trap and 30" standpipe.										
Drain	1 - Metal pop-up with tailpiece 2 - Basket strainers in finish to match faucet, tailpiece.										
Other	1 - Provide trap and supply guard if exposed. 2 - Hose and bracket, mop hanger and hose rack, wall guards.										

DRAIN SCHEDULE								
MARK	APPLICATION	MFGR	MODEL	BODY MATL	DEPTH	GRATE MATL	GRATE SHAPE	ACCESSORIES
FD-1	FLOOR	ZURN	ZN-415S	COATED CAST IRON	3"	NICKEL BRONZE	6" ROUND	1
FD-2	FLOOR	ZURN	Z-811-S	COATED CAST IRON	6"	COATED CAST IRON	9" SQUARE	1, 3

ACCESSORIES:
1 - DEEP TRAP, ADJUSTABLE GRATE
2 - ACID-RESISTANT COATING
3 - INTERNAL STRAINER
4 - SLOPED TO END . MEDIUM DUTY GRATE
5 - 2" DAM FOR OVERFLOW SERVICE
6 - SEDIMENT BUCKET

WATER HEATER SCHEDULE									
MARK	MFGR	MODEL	FUEL	VOLTAGE/P H/AMPS	INPUT	EFFICIENCY/ PF	GALLONS STORAGE	GPH RECOVERY @ 80° RISE	FLUE TYPE
WH- CL1	A.O. SMITH	ELJC-10	ELEC	120/1/12.5	1.5KW		10	8	N/A
WH- CL2	A.O. SMITH	ECLN-40	ELEC	208/1/19	4.5 KW	0.92	38	23	N/A

NOTES
1- PROVIDE ASME P&T VALVE, DRAIN VALVE, ANODE RODS
2- PROVIDE COMBINATION STOP AND OPERATING PRESSURE RELIEF VALVE
3- LOW TYPE
4 - TALL TYPE

HVAC SYSTEM SCHEDULE																
MARK	MFGR	NOM TON	MODEL	AHU								OUTDOOR UNIT				
				CFM	OA CFM	E.S.P.	HP	SMBH	TMBH	HEAT CAP	ELEC	FLA	OCP	MODEL	ELEC	FLA
DSS-C	FUJITSU	1.5	ASU18RLF	540	0	0			18	21 MBH	240/1	W/HP		AOU18RXLFW1	240/1	13
CL1	GOODMAN	5	ARUF61D14	1990	280	0.4	0.75	41	57.5	15 KW	240/1	60	80	GSX14-0601	240/1	26.3
CL2	GOODMAN	5	ARUF61D14	1750	250	0.4	0.75	41	57.5	15 KW	240/1	60	80	GSX14-0601	240/1	26.3
CL3	GOODMAN	5	ASPT61D14AC	1990	300	0.4	0.75	41	57.5	15 KW	240/1	60	80	GSX14-0601	240/1	26.3

EXHAUST FAN SCHEDULE										
MARK	MFGR	MODEL	CFM	ESP	FAN HP	ELECTRICAL				CONFIGURATION - NOTES
						VOLTS/ PH	FLA	OCP	WIRING	
EF-1, 2, 5 Club	GREENHECK	SP-A110	70	0.25	Fr.	120/1	1	15	(3) #12	ceiling, 1, 2
EF-3 Club	GREENHECK	SP-A110	70	0.25	Fr.	120/1	1	15	(3) #12	ceiling, 1, 2
EF-4 Club	GREENHECK	SP-A190	150	0.25	Fr.	120/1	1	15	(3) #12	ceiling, 1, 2
EF-6	GREENHECK	SP-A290	250	0.25	Fr.	120/1	1	15	(3) #12	ceiling, 1, 2
NOTES: 1-CEILING GRILLE 2-BD DAMPER, DS, SPEED CONTROLLER, WALL/ROOF CAP										

ELECTRIC UNIT HEATER SCHEDULE									
MARK	MFGR	MODEL	KW	MBH	CFM	ELECTRICAL			
						VOLTS/ PH	FLA	OCP	WIRING
EUH - A	BERKO	FRC-4024F	3.0	10.2	100	208-1	14.4	20	(3) #12
EUH - B	BERKO	HUH-524TA	2.5	8.5	270	208/1	13.3	20	(3) #12
NOTES: 1-SURFACE MOUNTED 2-SEMI-RECESSED 3-FULLY RECESSED 4-DISCONNECT 5-INTEGRAL TSTAT 6-WALL TSTAT									

AIR TERMINAL DEVICE SCHEDULE						
MARK	MANUFACTURER	MODEL	FINISH	DAMPER	FRAME TYPE	NOTES
D	PRICE	AMD/6/4A/B12	WHITE	NO	GYP. BD.	
E	PRICE	635DAL/LA/B12	WHITE	YES	GYP. BD.	
F	PRICE	LHP	WHITE	NO	GYP. BD.	
G	PRICE	SDS	WHITE	NO	GYP. BD.	

NOTES

1- PROVIDE ASME P&T VALVE, DRAIN VALVE, ANODE RODS
2- PROVIDE COMBINATION STOP AND OPERATING PRESSURE RELIEF VALVE
3- LOW TYPE
4 - TALL TYPE

MITSCH DESIGN

200 S. Rangeline Rd. | Suite 226
Carmel, Indiana 46032
.....
317.573.2222
www.mitschdesign.com

LS&A

Latimer Sommers & Associates, P.A.
CONSULTING ENGINEERS
3839 SW Summerfield Drive, Suite A
Topeka, Kansas 66614-3974
Telephone: (785) 233-3232
FAX: (785) 233-0647
Email: lsapa@lsapa.com
LSA PROJECT NO. 2404033

EVREN APARTMENTS

NEW CONSTRUCTION

EVREN APARTMENTS CLUBHOUSE

LEE'S SUMMIT, MISSOURI

PERMIT SET

STATE OF MISSOURI
RECEIVED
BEAR
PROFESSIONAL ENGINEER
NUMBER
PE-200600068

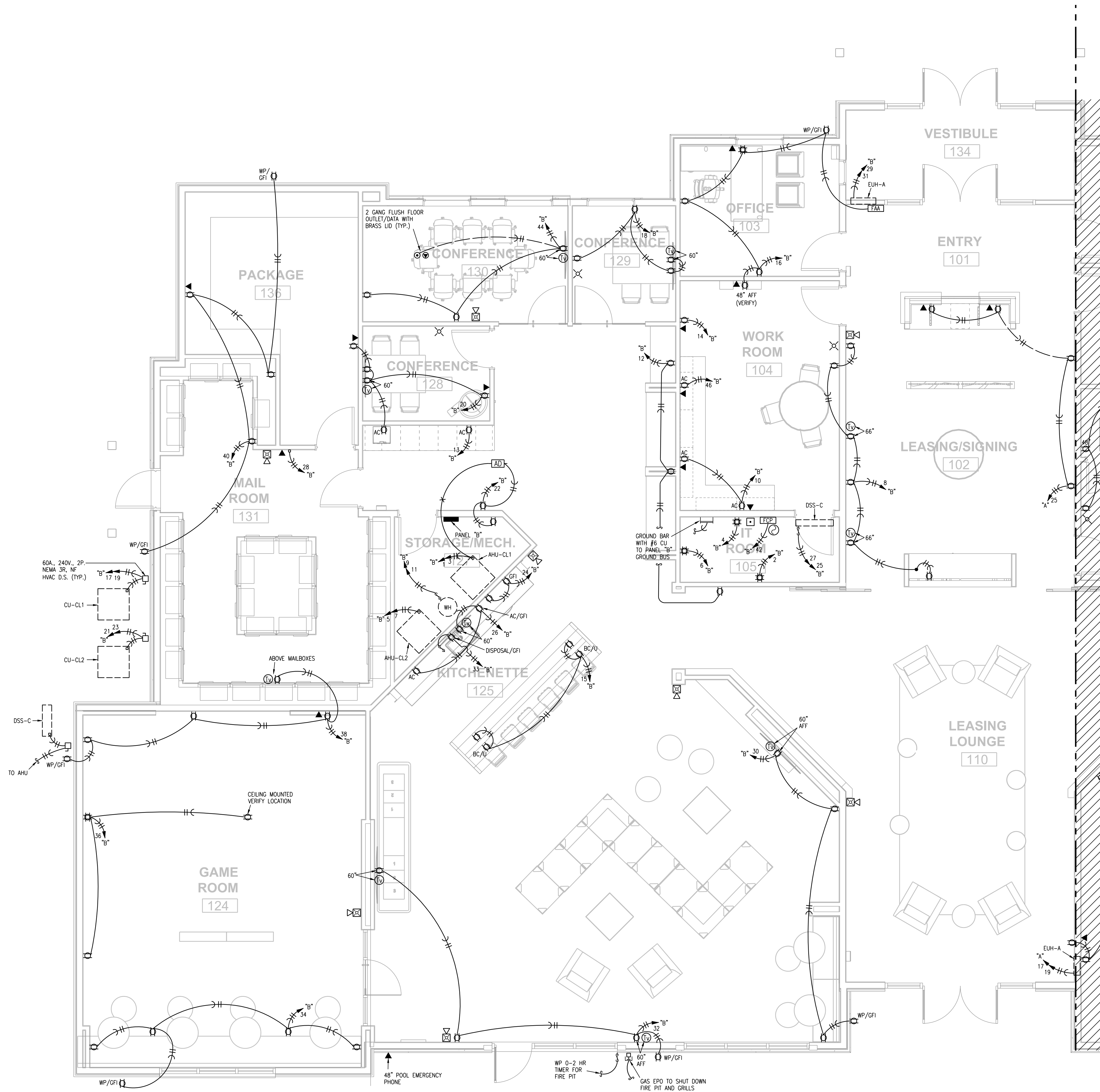
5-31-2024

MD PROJECT #:	24097
DRAWN BY:	CJD
CHECKED BY:	RRB
PRELIMINARY	
PERMIT SET	
REVISION SCHEDULE	5/31/2024
#	DATE
	DESCRIPTION

ALL IDEAS, DESIGNS AND PLANS (ORIGINAL WORKS OF AUTHORSHIP FIXED IN A TANGIBLE MEDIUM OF EXPRESSION) INDICATED OR PRESENTED BY THESE DRAWINGS AND DOCUMENTS ARE OWNED BY, AND ARE THE PROPERTY OF MITSCH DESIGN. ALL RIGHTS RESERVED, EXCEPT FOR USES EXPRESSLY PERMITTED IN WRITING.

MECHANICAL SCHEDULES

MP102



- NOTES:
1. PROVIDE NEC CLEARANCE FOR ALL PANELS AND ELECTRICAL EQUIPMENT.
 2. FOLLOW THE DRAWINGS FOR HOME RUNS AND CIRCUIT NUMBERS. DO NOT COMBINE CIRCUITS IN LARGER CONDUITS UNLESS PRE-APPROVED BY THE ENGINEER.
 3. LABEL ALL JUNCTION BOXES AS TO THE PANEL AND CIRCUIT NUMBER SERVED.
 4. PANEL DIRECTORIES SHALL BE SPECIFIC TO THE ROOMS SERVED.
 5. SEE SHEETS CH-A251, CH-A252 FOR DEVICE MOUNTING HEIGHTS AND LATERAL DIMENSIONS.
 6. CONFIRM LOCATION OF FLOOR OUTLETS WITH INTERIOR DESIGNER PRIOR TO INSTALLATION.

1 PARTIAL CLUBHOUSE PLAN
1/4"=1'-0" POWER

EVREN APARTMENTS
NEW CONSTRUCTION
EVREN APARTMENTS CLUBHOUSE
LEE'S SUMMIT, MISSOURI
PERMIT SET



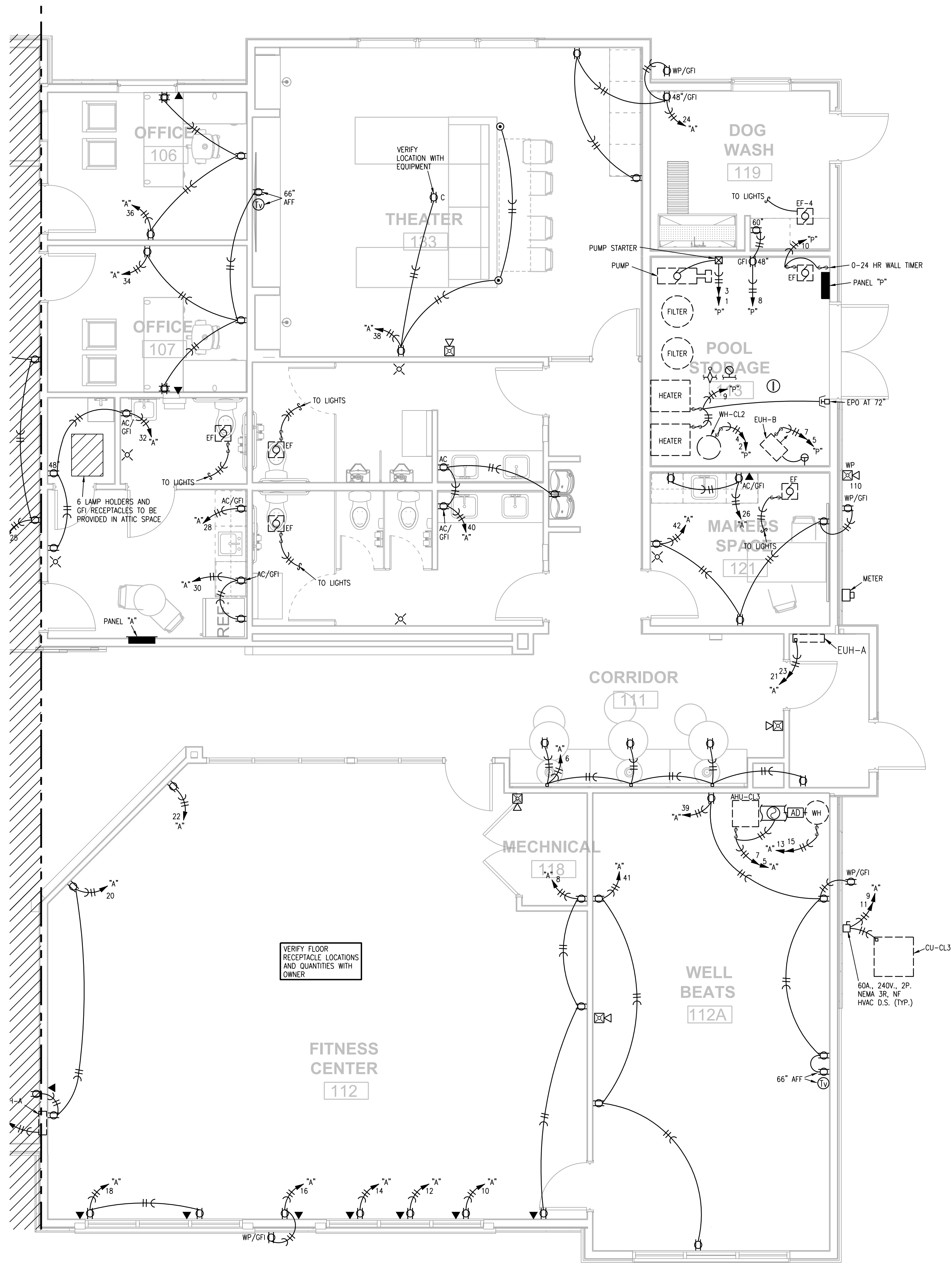
5-31-2024

MD PROJECT #:	24097
DRAWN BY:	CJD
CHECKED BY:	RRB
PRELIMINARY	-
PRICING SET	5/31/2024
PERMIT SET	
REVISION SCHEDULE	
#	DATE DESCRIPTION

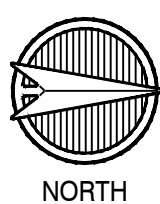
ALL IDEAS, DESIGNS AND PLANS (ORIGINAL WORKS OF AUTHORSHIP FIXED IN A TANGIBLE MEDIUM OF EXPRESSION) INDICATED OR PRESENTED BY THESE DRAWINGS AND DOCUMENTS ARE OWNED BY, AND ARE THE PROPERTY OF MITSCH DESIGN. ALL RIGHTS RESERVED, EXCEPT FOR USES EXPRESSLY PERMITTED IN WRITING.

PARTIAL
CLUBHOUSE FLOOR
PLAN - POWER

E101



1 PARTIAL CLUBHOUSE PLAN
1/4"=1'-0" POWER



- NOTES:
1. PROVIDE NEC CLEARANCE FOR ALL PANELS AND ELECTRICAL EQUIPMENT.
 2. FOLLOW THE DRAWINGS FOR HOME RUNS AND CIRCUIT NUMBERS. DO NOT COMBINE CIRCUITS IN LARGER CONDUITS UNLESS PRE-APPROVED BY THE ENGINEER.
 3. LABEL ALL JUNCTION BOXES AS TO THE PANEL AND CIRCUIT NUMBER SERVED.
 4. PANEL DIRECTORIES SHALL BE SPECIFIC TO THE ROOMS SERVED.
 5. SEE SHEETS CH-A251, CH-A252 FOR DEVICE MOUNTING HEIGHTS AND LATERAL DIMENSIONS.
 6. CONFIRM LOCATION OF FLOOR OUTLETS WITH INTERIOR DESIGNER PRIOR TO INSTALLATION.



5-31-2024

MD PROJECT #:	24097
DRAWN BY:	CJD
CHECKED BY:	RRB
PRELIMINARY	-
PRICING SET	5/31/2024
PERMIT SET	
REVISION SCHEDULE	
#	DATE DESCRIPTION

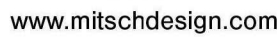
ALL IDEAS, DESIGNS AND PLANS (ORIGINAL WORKS OF AUTHORSHIP FIXED IN A TANGIBLE MEDIUM OF EXPRESSION) INDICATED OR PRESENTED BY THESE DRAWINGS AND DOCUMENTS ARE OWNED BY, AND ARE THE PROPERTY OF MITSCH DESIGN. ALL RIGHTS RESERVED, EXCEPT FOR USES EXPRESSLY PERMITTED IN WRITING.

PARTIAL
CLUBHOUSE FLOOR
PLAN - POWER

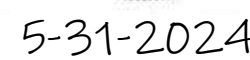
E102



REFLECTED CEILING PLAN LEGEND



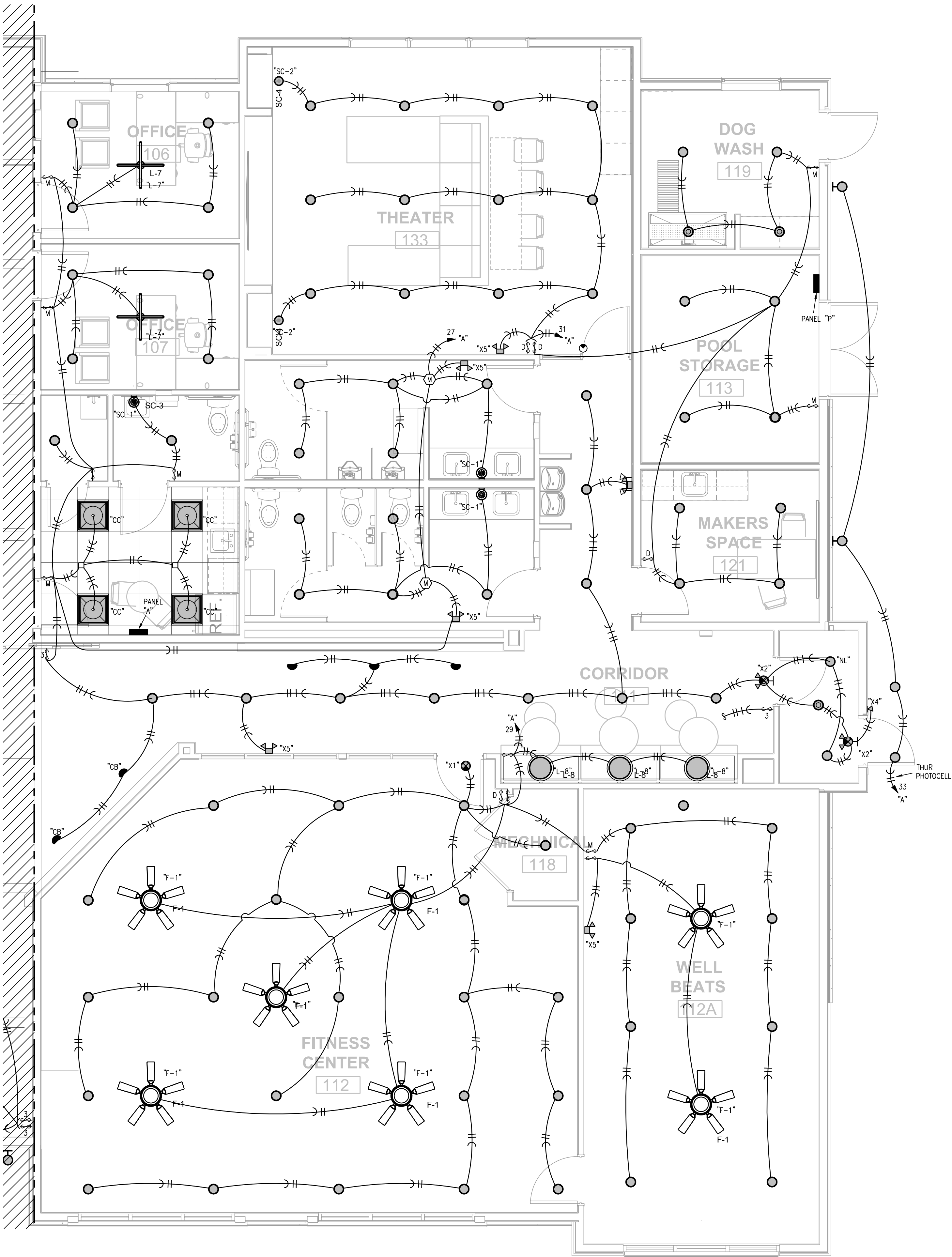
EVREN APARTMENTS



ALL IDEAS, DESIGNS AND PLANS (ORIGINAL WORKS OF AUTHORSHIP FIXED IN A TANGIBLE MEDIUM OF EXPRESSION) INDICATED OR PRESENTED BY THESE DRAWINGS AND DOCUMENTS ARE OWNED BY, AND ARE THE PROPERTY OF MITSCH DESIGN. ALL RIGHTS RESERVED. EXCEPT FOR USES EXPRESSLY PERMITTED IN WRITING.

**PARTIAL
CLUBHO
PLAN - L**

E201



NOTES:
1. SEE INTERIOR DESIGN PLANS FOR FURTHER WORK AND
FIXTURE SPECS.

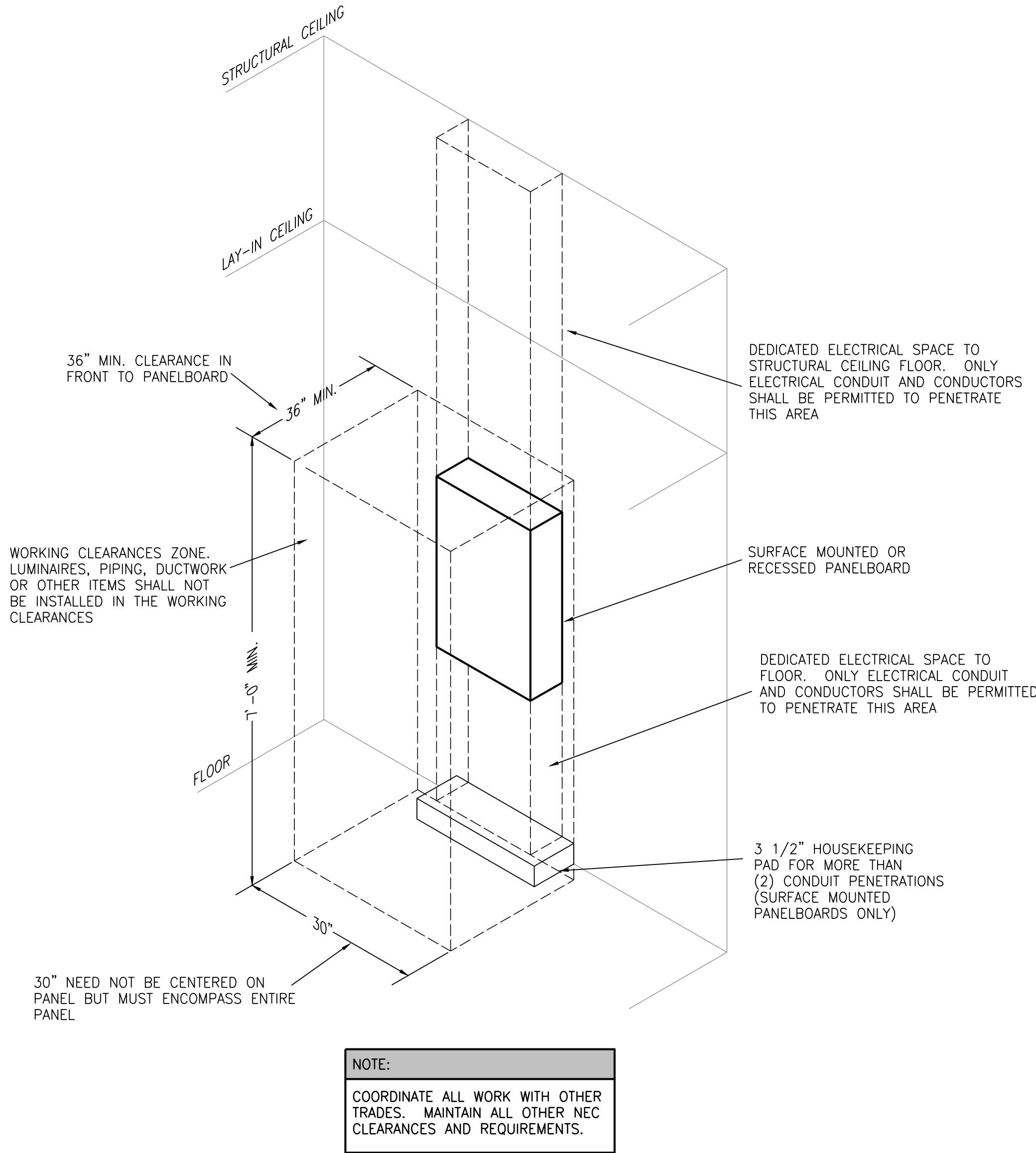
REFLECTED CEILING PLAN LEGEND

	NOT IN SCOPE		DENOTES DRYWALL BULKHEAD
	DENOTES 2X2 LIGHT FIXTURE: BEGHELLI PLANEX ECO FLAT PANEL, 3500K		
	DENOTES 2X2 GRID/TILE (ACT-1 - SEE A700 FOR SPECIFICATION)		
	DENOTES 6" LED SURFACE MOUNT MODULE, RAYON LIGHTING, RJL56, WHITE FINISH		
	DENOTES WALL WASH RECESSED CAN; PROGRESS LIGHTING (E26) INTEGRATED RECESSED FIXTURE 6" ADJUSTABLE RECESSED TRIM, MODEL # P800020-028		
	DENOTES DECORATIVE CHANDELIER: TROY LIGHTING, ANDROMEDA CHANDELIER, 42" DIA., 12 LAMP, BLACK AND POLISHED NICKEL FINISH, # F4826-TBK/PN; BOTTOM OF FIXTURE TO BE MOUNTED 10'-6" AFF.		
L-1			
	DENOTES DECORATIVE PENDANT: VISUAL COMFORT & CO, NIDO LARGE PENDANT, 15" DIA., MIDNIGHT BLACK FINISH, #KP1161MBK. BOTTOM OF FIXTURE TO BE MOUNTED 6'-6" AFF.		
L-2			
	DENOTES DECORATIVE PENDANT: WAC LIGHTING, OYSTER PENDANT, 33" DIA., BLACK/CHROME FINISH, #PD41433. BOTTOM OF FIXTURE TO BE MOUNTED 8'-0" AFF.		
L-3			
	DENOTES DECORATIVE PENDANT: WAC LIGHTING, CAPPE PENDANT, 21" DIA., BLACK FINISH, #PD-17421. BOTTOM OF FIXTURE TO BE MOUNTED 6'-6" AFF.		
L-4			
	DENOTES DECORATIVE PENDANT: WAC LIGHTING, KNOT PENDANT, 13" DIA., BLACK FINISH, #PD-27413. BOTTOM OF FIXTURE TO BE MOUNTED 6'-6" AFF.		
L-5			
	DENOTES DECORATIVE PENDANT: WAC LIGHTING, SOLO PENDANT, 48" DIA., BLACK FINISH, #PD-19348. BOTTOM OF FIXTURE TO BE MOUNTED 6'-6" AFF.		
L-6			
	DENOTES DECORATIVE PENDANT: VISUAL COMFORT & CO, PHOBOS WIDE FLUSH PENDANT, 28" DIA., DARK BRONZE FINISH, #700FMPHB.		
L-7			
	DENOTES DECORATIVE WALL SCONCE: VISUAL COMFORT & CO, JONI 16 WALL, MATTE BLACK FINISH, MODEL #700WSJN1. REFER TO ELEVATIONS FOR MOUNTING HEIGHT AND PLACEMENT.		
SC-1			
	DENOTES DECORATIVE WALL SCONCE: VISUAL COMFORT & CO, GESTURE SCONCE/FLUSH MOUNT, MIDNIGHT BLACK FINISH, #KWL1071MBK. REFER TO ELEVATIONS FOR MOUNTING HEIGHT AND PLACEMENT.		
SC-2			
	DENOTES DECORATIVE WALL SCONCE: VISUAL COMFORT & CO, PHOBOS 2 LIGHT WALL SCONCE, POLISHED NICKEL FINISH, #00WSPHB. REFER TO ELEVATIONS FOR MOUNTING HEIGHT, ORIENTATION AND PLACEMENT.		
SC-3			
	DENOTES TAPE LIGHT; WAC LIGHTING INVISILED PRO 24V TAPE LIGHT SYSTEM; MODEL #. LED-T24-35-3500K-85		
	DENOTES CEILING FAN: VISUAL COMFORT; ROZZEN 52" HUGGER CEILING FAN, MIDNIGHT BLACK FINISH, #3RZHR52MBK. BOTTOM OF FIXTURE TO BE MOUNTED 11'-0" AFF IN "FITNESS CENTER 112", AND FLUSH MOUNTED IN "WELL BEATS 118"		
F-1			
NOTE: ALL LIGHTING AND MECHANICAL ITEMS FOR LOCATION PURPOSES ONLY. REFER TO ENGINEERING DRAWINGS FOR MORE INFORMATION.			

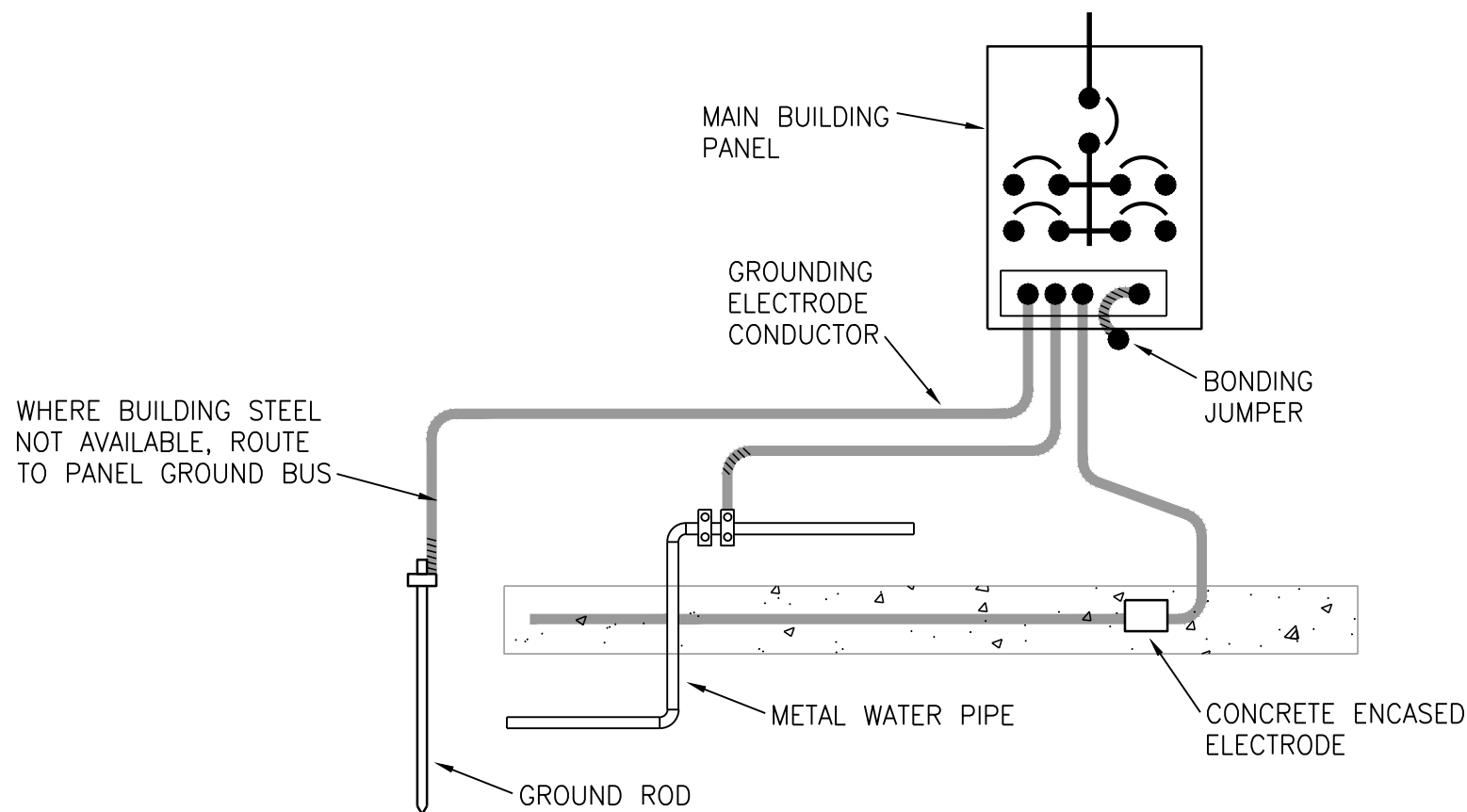
1 PARTIAL CLUBHOUSE PLAN
1/4" = 1'-0"
LIGHTING
NORTH

MD PROJECT #:	24097
DRAWN BY:	CAD
CHECKED BY:	RRB
PRELIMINARY	-
PRICING SET	-
PERMIT SET	5/31/2024
REVISION SCHEDULE	
#	DATE
DESCRIPTION	

ALL IDEAS, DESIGNS AND PLANS (ORIGINAL WORKS OF
AUTHORSHIP FIXED IN A TANGIBLE MEDIUM OF EXPRESSION)
INDICATED OR PRESENTED BY THESE DRAWINGS AND
DOCUMENTS ARE OWNED BY, AND ARE THE PROPERTY OF
MITSCH DESIGN. ALL RIGHTS RESERVED, EXCEPT FOR USES
EXPRESSLY PERMITTED IN WRITING.

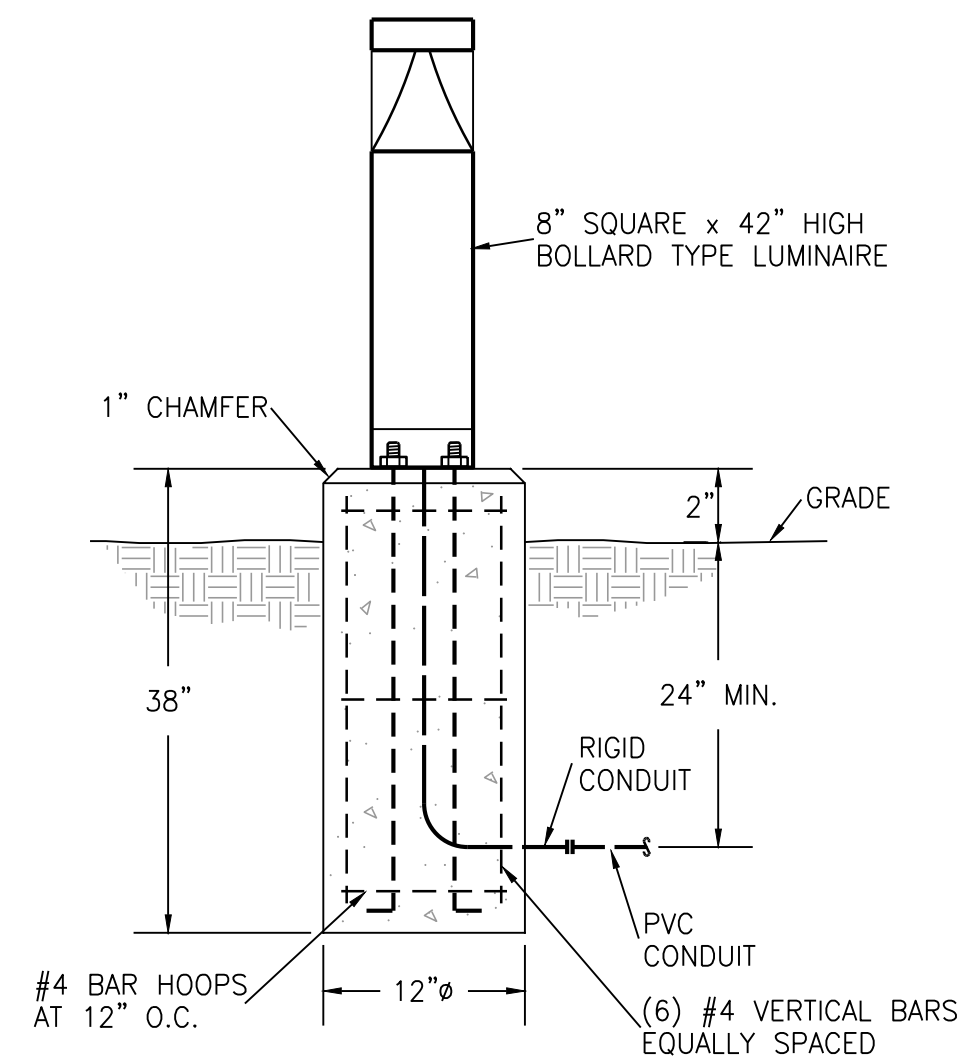


1 TYPICAL PANELBOARD INSTALLATION DETAIL
NO SCALE

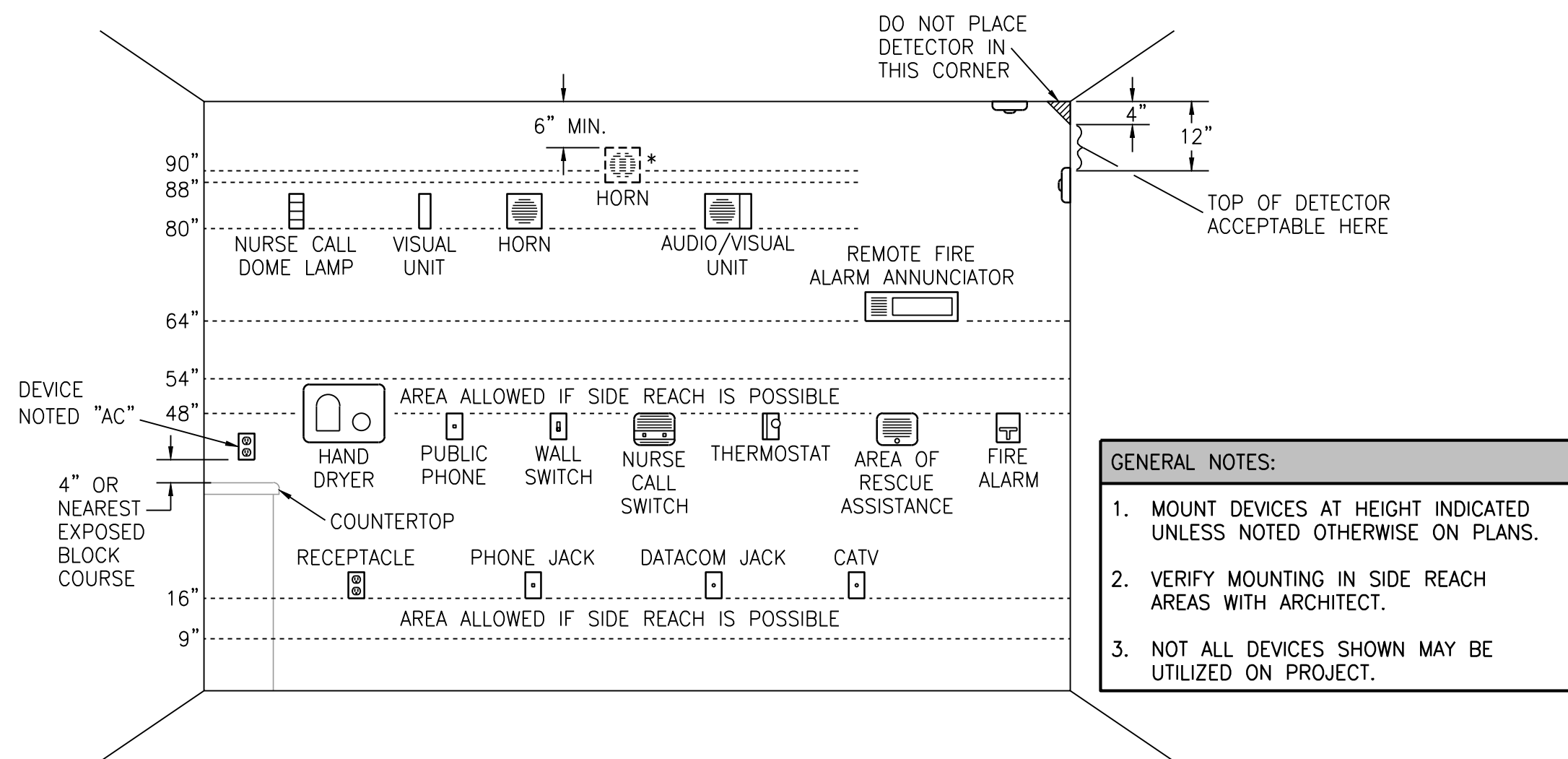


2 GROUNDING ELECTRODE SYSTEM DETAIL
NO SCALE

ELECTRICAL SYMBOLS LEGEND			
	CONDUIT CONCEALED IN CEILING OR WALL		SWITCH - SINGLE POLE
	CONDUIT CONCEALED IN FLOOR SLAB		3-WAY, 4-WAY
	EXPOSED CONDUIT		LIGHT FIXTURE AND TYPE
	HOMERUN - ARROW INDICATES CKT., LINES INDICATE WIRES		FLUORESCENT LIGHT FIXTURE
	GROUND WIRE		EMERGENCY LIGHT FIXTURE WITH BATTERY PACK
	GROUNDING ROD		FIXTURE ON LIFE SAFETY BRANCH OF EMERGENCY SYSTEM
	SINGLE RECEPTACLE		INCANDESCENT OR H.I.D. LIGHT FIXTURE
	DUPLEX RECEPTACLE (20 AMP UNLESS NOTED)		INCANDESCENT OR H.I.D. LIGHT FIXTURE (WALL MOUNTED)
	FOURPLEX RECEPTACLE		EXIT LIGHT (CEILING OR WALL MOUNTED)
	208 OR 240 VOLT RECEPTACLE (20 AMP UNLESS NOTED)		FLUSH PANELBOARD (LIGHT & RECEPTACLES)
	CLOCK RECEPTACLE		SURFACE PANELBOARD (LIGHT & RECEPTACLES)
	TELE/DATA OUTLET *		DISTRIBUTION PANEL OR SWITCHBOARD
	TELE/DATA OUTLET *		AC DEVICE LOCATED ABOVE COUNTER
	PUSHBUTTON		ABOVE FINISHED FLOOR
	CEILING SPEAKER		DIMMER
	BELL		INDICATES EXISTING DEVICE
	MOTOR		ELECTRIC DRINKING FOUNTAIN
	FUSIBLE SWITCH (BUSSMAN SSU)		GROUND FAULT INTERRUPTER
	DISCONNECT SWITCH (D.S.)		NIGHTLIGHT FIXTURE, WIRED HOT
	COMBINATION MOTOR STARTER (CMS)		WEATHERPROOF
	RELAY		CONNECT NEW TO EXISTING
	JUNCTION BOX		LOCKABLE GUARD
	THERMOSTAT		
NOTES: ALL SYMBOLS SHOWN ABOVE MAY NOT APPEAR ON PLANS. REFER TO MECHANICAL SYMBOLS LEGEND FOR MECHANICAL SYMBOLS THAT MAY BE SHOWN ON ELECTRICAL PLANS. * 4x4 BACKBOX WITH SINGLE GANG PLASTER RING AND A 1 1/4" CONDUIT TO ABOVE ACCESSIBLE CEILING.			

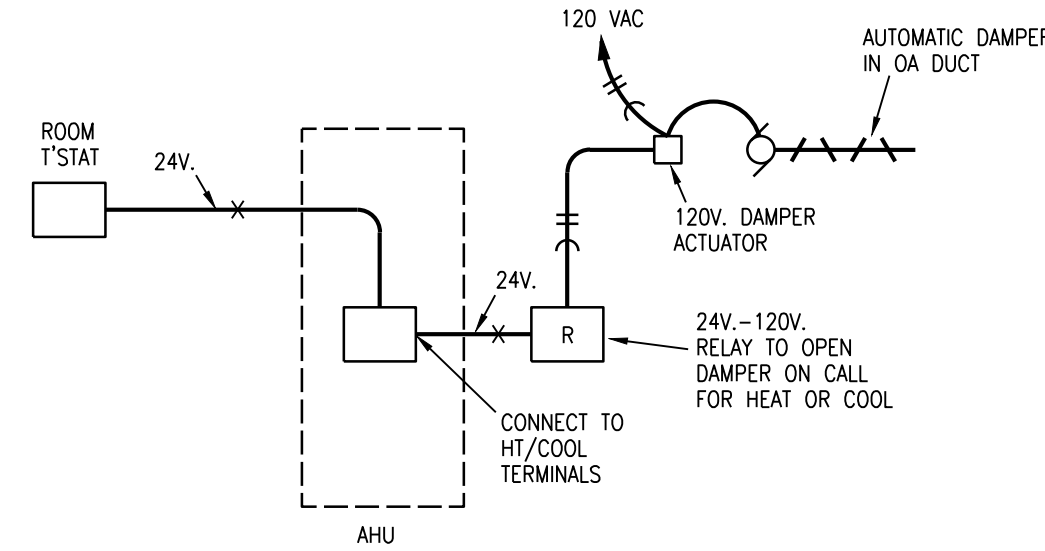


3 BOLLARD TYPE LUMINAIRE DETAIL
NO SCALE



4 ELECTRICAL DEVICE MOUNTING HEIGHTS
NO SCALE

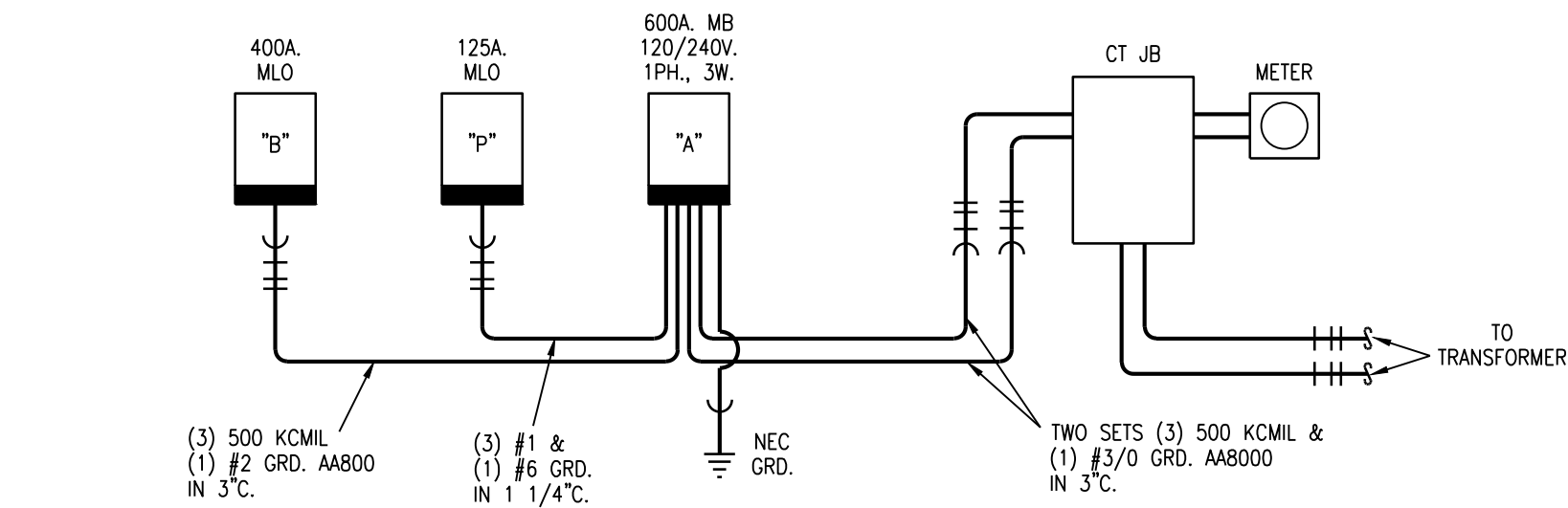
DEVICE MOUNTING NOTES:	
1. VISUAL UNIT	DEVICE BOTTOM 80" ABOVE HIGHEST FLOOR LEVEL OR TOP 6" BELOW CEILING; WHICHEVER IS LOWER (ADA 1993).
2. AUDIO UNIT	DEVICE BOTTOM 80" ABOVE HIGHEST FLOOR LEVEL OR TOP 6" BELOW CEILING; WHICHEVER IS LOWER (ADA 1993).
* TOP OF UNIT NOT LESS THAN 90" ABOVE FLOOR AND NOT LESS THAN 6" BELOW CEILING (NFPA) (BOTTOM AT 88" WITH BLOCK COURSES). MOUNT AT NFPA HEIGHT ONLY IF REQUIRED BY LOCAL AHJ.	
3. AUDIO/VISUAL UNIT	DEVICE BOTTOM 80" ABOVE HIGHEST FLOOR LEVEL OR TOP 6" BELOW CEILING; WHICHEVER IS LOWER (ADA 1993).
4. PULL STATION	HIGHEST OPERABLE PART SHALL NOT BE MORE THAN 48" ABOVE THE FLOOR (FRONT APPROACH) (ADA 1993).



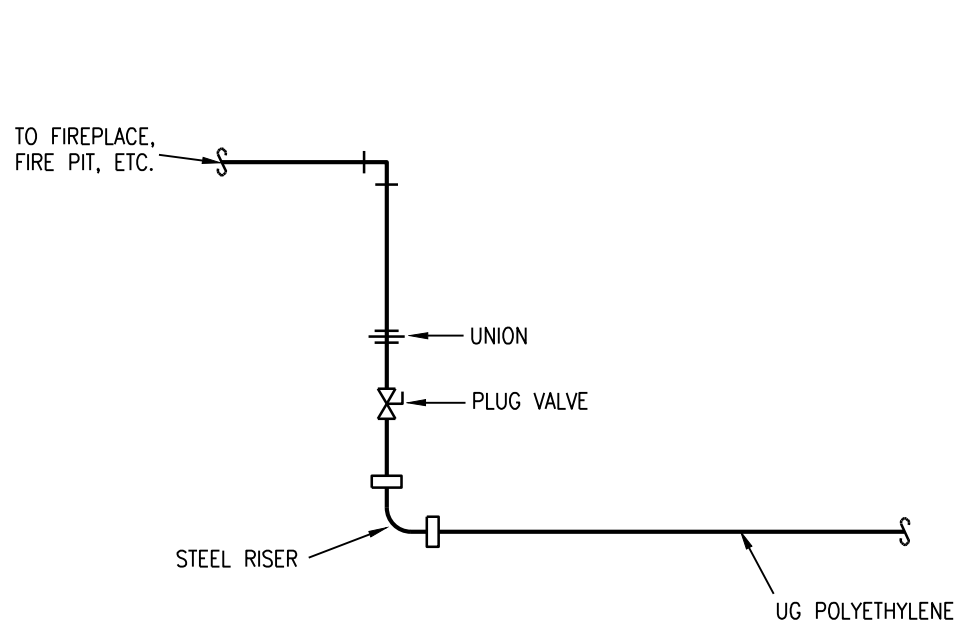
5 OUTSIDE AIR DAMPER CONTROL SCHEMATIC
NO SCALE (TYP. FOR CLUBHOUSE UNITS)

MD PROJECT #:	24097
DRAWN BY:	CJD
CHECKED BY:	RRB
PRELIMINARY	-
PRICING SET	-
PERMIT SET	5/31/2024
REVISION SCHEDULE	
#	DATE
DESCRIPTION	

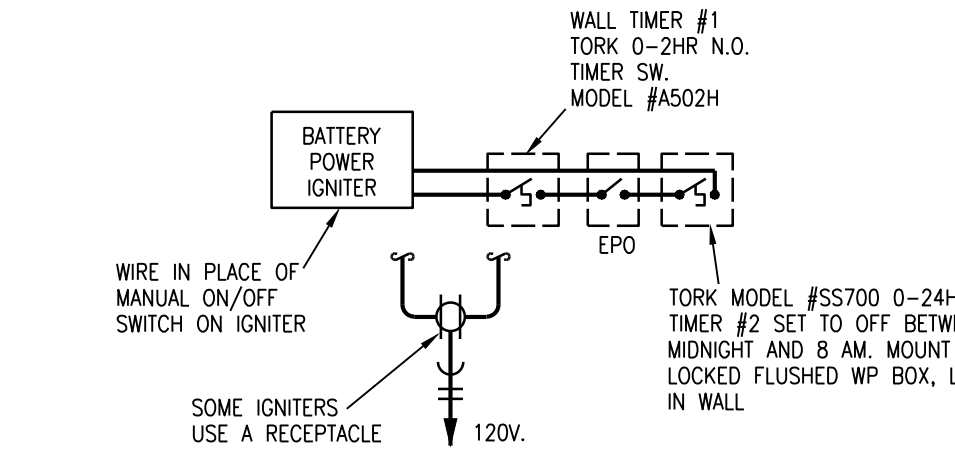
ALL IDEAS, DESIGNS AND PLANS (ORIGINAL WORKS OF AUTHORSHIP) FIXED IN A TANGIBLE MEDIUM OF EXPRESSION INDICATED OR PRESENTED BY THESE DRAWINGS AND DOCUMENTS ARE OWNED BY, AND ARE THE PROPERTY OF, MITSCH DESIGN. ALL RIGHTS RESERVED, EXCEPT FOR USES EXPRESSLY PERMITTED IN WRITING.



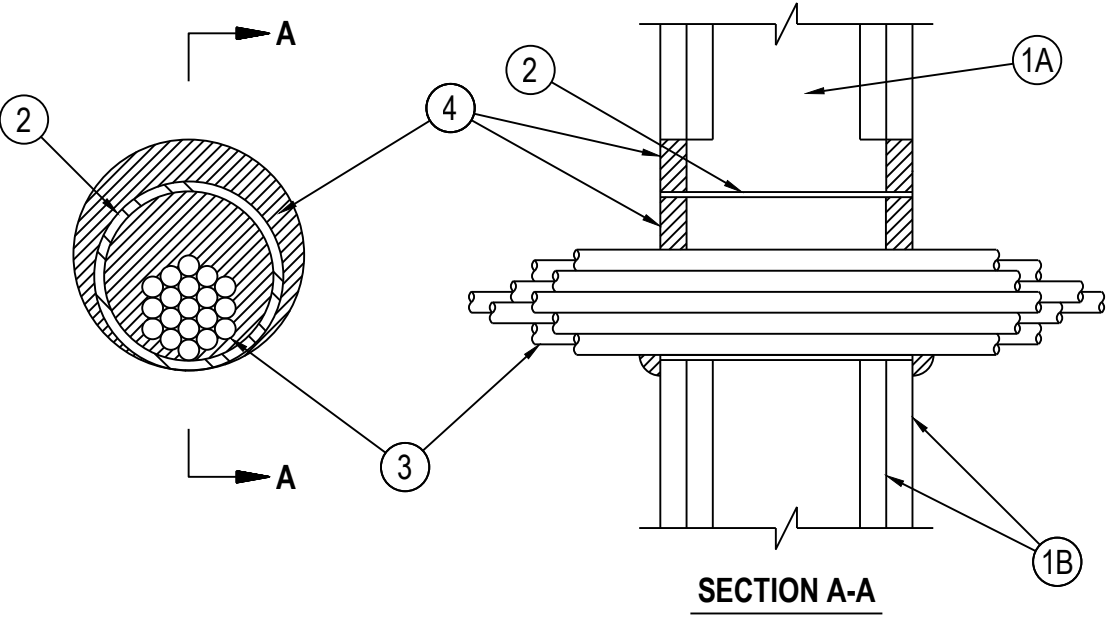
1 ELECTRICAL DISTRIBUTION RISER DIAGRAM
NO SCALE



PIPING SCHEMATIC

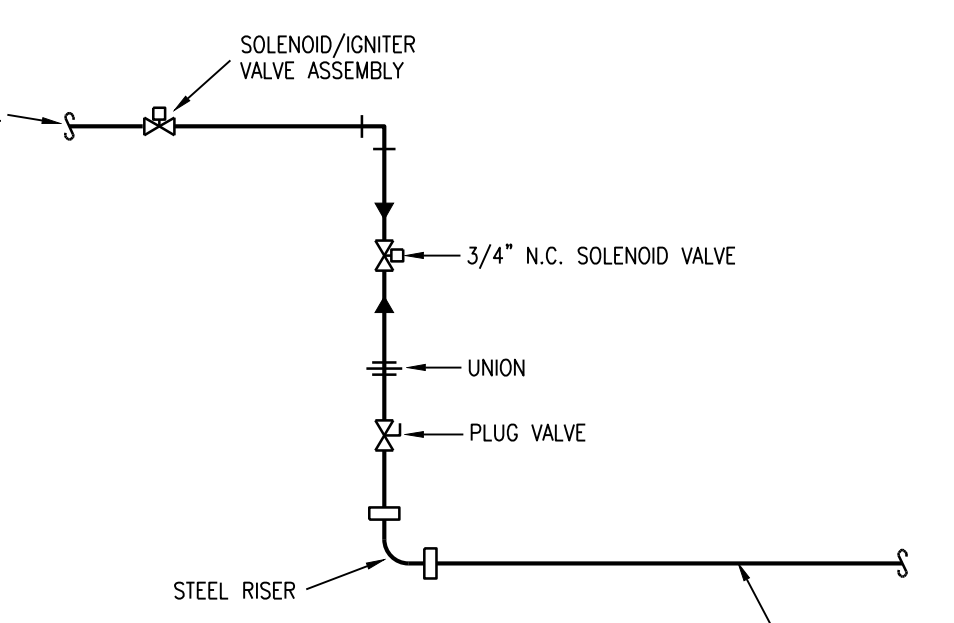


CONTROL SCHEMATIC

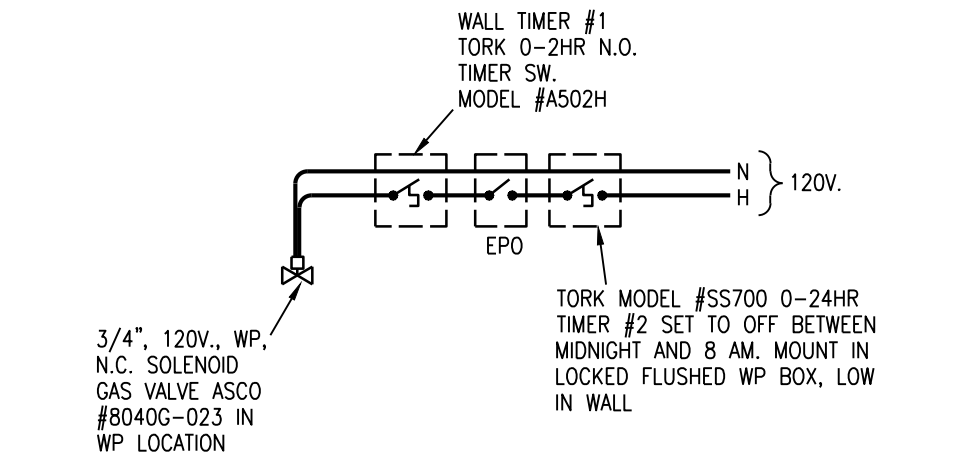


5 FIRE RATED PENETRATION DETAIL
NO SCALE SYSTEM WL-3065

2 GAS CONTROL DETAIL
NO SCALE (FIRE PIT)

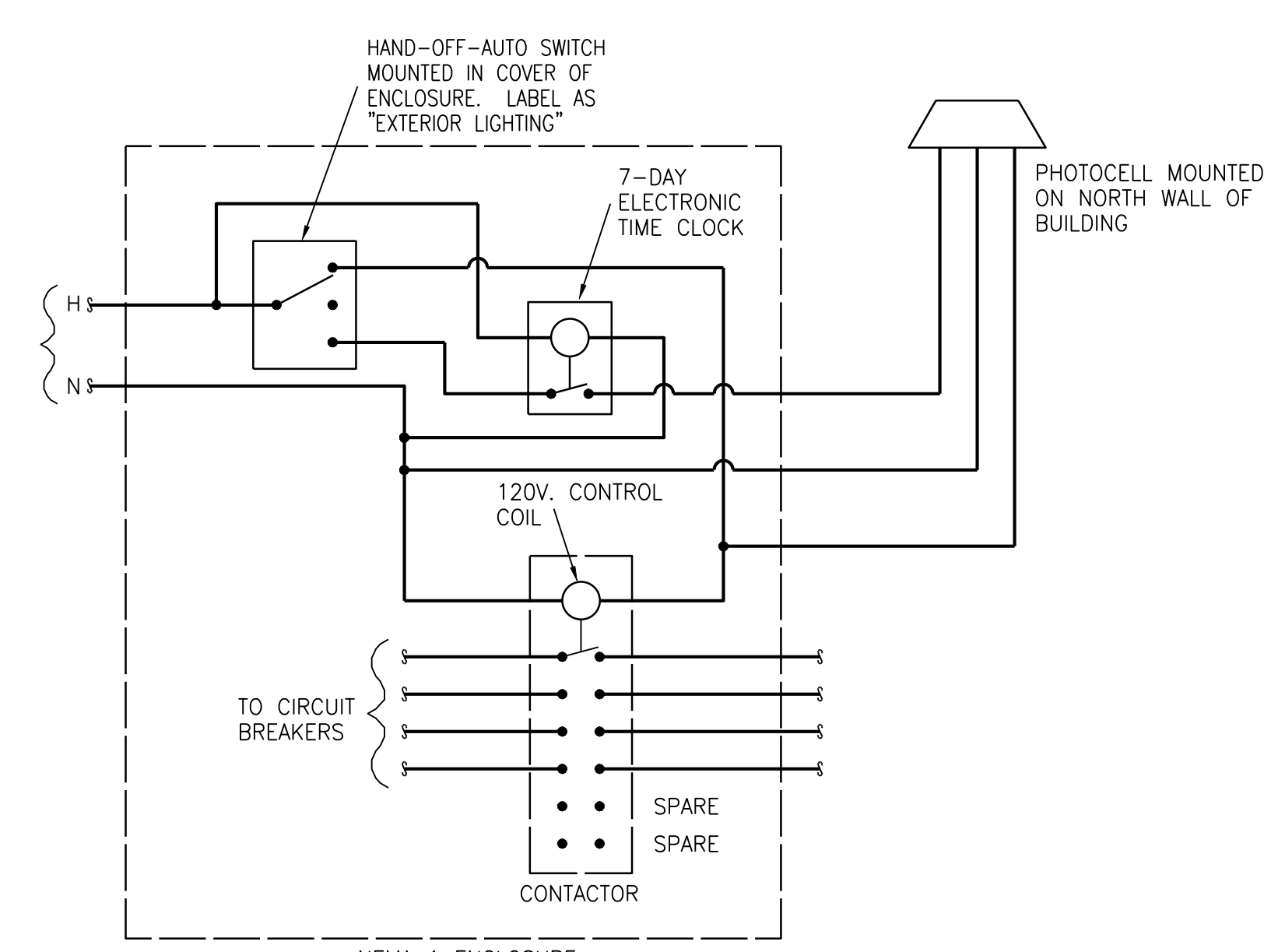


PIPING SCHEMATIC



CONTROL SCHEMATIC

3 GAS CONTROL DETAIL
NO SCALE (GRILL)



EXTERIOR LIGHTING

4 CONTROL PANEL SCHEMATIC
NO SCALE

NOTES AND LEGENDS:

1. Wall Assembly — The 1 or 2 fire-rated gypsum wallboard/stud wall assembly shall be constructed of the materials and in the manner specified in the individual U300, U400 or V400 Series Wall and Partition Designs in the UL Fire Resistance Directory and shall include the following construction features:
 - A. Studs — Wall framing may consist of either wood studs or steel channel studs. Wood studs to consist of nom 2 by 4 in. (51 by 102 mm) lumber spaced 16 in. (406 mm) OC. Steel studs to be min 2-1/2 in. (64 mm) wide and spaced max 24 in. (610 mm) OC.
 - B. Gypsum Board* — Nom 5/8 in. (16 mm) thick gypsum board, with square or tapered edges. The gypsum board type, thickness, number of layers, fastener type and sheet orientation shall be as specified in the individual U300, U400 or V400 Series Design in the UL Fire Resistance Directory. Max diam of opening is 5-1/2 in. (138 mm) when sleeve (Item 2) is employed. Max diam of opening is 4 in. (102 mm) when sleeve (Item 2) is not employed. The F Rating of the firestop system is equal to the fire rating of the wall assembly.
2. Metallic Sleeve — (Optional) — Nom 4 in. (102 mm) diam (or smaller) steel electrical metallic tubing (EMT) or Schedule 5 (or heavier) steel pipe or min 0.016 in. thick (0.41 mm, N2o. 28 ga) galv steel sleeve installed flush with wall surfaces. The annular space between steel sleeve and periphery of opening shall be min 0 in. (0 mm, point contact) to max 1 in. (25mm). When Schedule 5 steel pipe or EMT is used, sleeve may extend up to 18 in. (457 mm) beyond the wall surfaces.
3. Cables — Aggregate cross-sectional area of cable in opening to be max 45 percent of the cross-sectional area of the opening. The annular space between the cable bundle and the periphery of the opening to be min 0 in. (0 mm, point contact) to max 1 in. (25 mm) Cables to be rigidly supported on both sides of the wall assembly. Any combination of the following types and sizes of copper conductor cables may be used:
 - A. Max 7/C No. 12 AWG with polyvinyl chloride (PVC) insulation and jacket.
 - B. Max 25 pair No. 24 AWG telephone cable with PVC insulation and jacket.
 - C. Type RG/U coaxial cable with polyethylene (PE) insulation and PVC jacket having a max outside diameter of 1/2 in. (13 mm).
 - D. Multiple fiber optical communication cable jacketed with PVC and having a max OD of 5/8 in. (16 mm).
 - E. Through Penetrating Products*— Max three copper conductor No. 8 AWG . Metal-Clad Cable+.
 - F. Max 3/C (with ground)(or smaller) No. 8 AWG copper conductor cable with PVC insulation and jacketing.
 - G. Max 3/4 in. (19 mm) diam copper ground cable with or without a PVC jacket.
 - H. Fire Resisive Cables* — Max 1-1/4 in. (32 mm) diam single conductor or multi conductor type MI cable. A min 1/8 in. (3 mm) separation shall be maintained between MI cables and any other types of cable.Through Penetrating Product* — Any cables, Metal-Clad Cable+ or Armored Cable+ currently Classified under the Through Penetrating Products category. See Through Penetrating Product (XHLV) category in the Fire Resistance Directory for names of manufacturers.
4. Fill, Void or Cavity Material*— Sealant or Putty — Fill material applied within the annulus, flush with each end of the steel sleeve or wall surface. Fill material installed symmetrically on both sides of the wall. A min 5/8 in. (16 mm) thickness of sealant is required for the 1 or 2 hr F Rating . An additional 1/2 in. (13 mm) diam bead of fill material shall be applied around the perimeter of sleeve on both sides of the wall when sleeve extends beyond surface of wall.

HILTI CONSTRUCTION CHEMICALS, DIV OF HILTI INC — CP601S, CP606, FS-One Sealants or CP618 Putty

*Bearing the UL Classification Mark

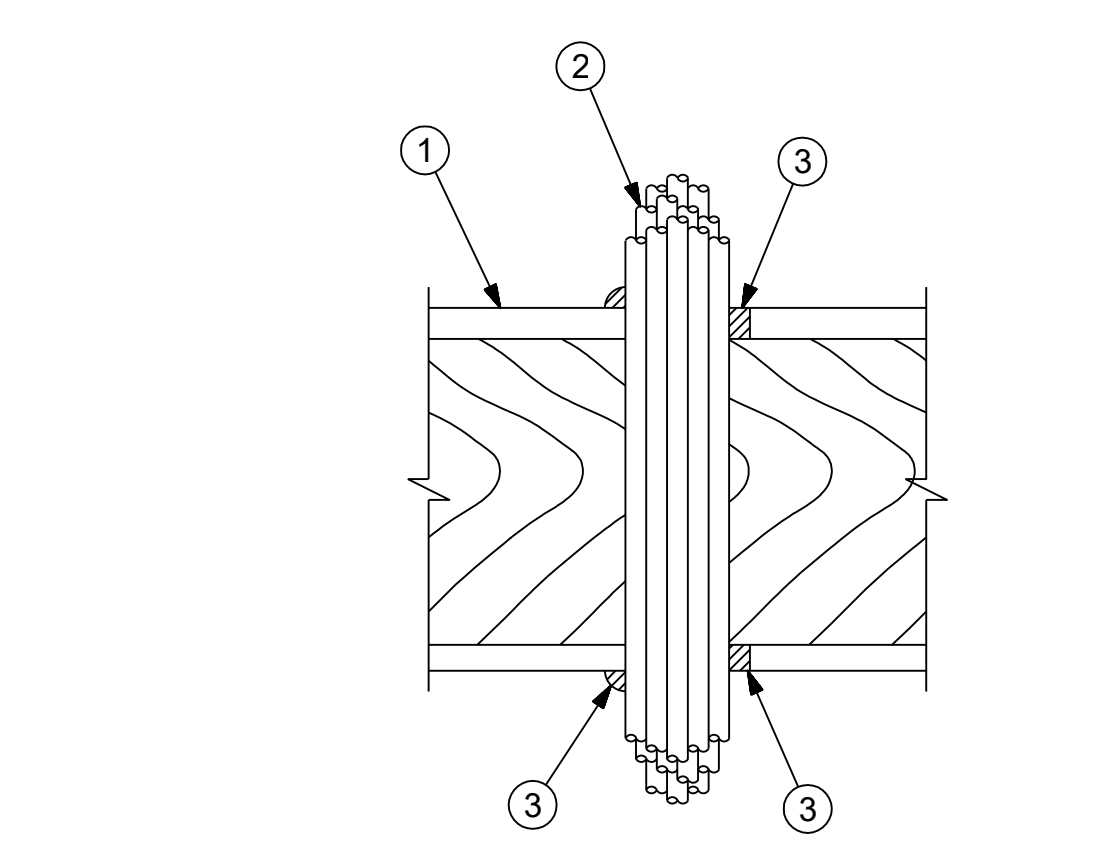
+Bearing the UL Listing Mark

NOTES AND LEGENDS:

1. Floor-Ceiling Assembly — The 1 hr fire-rated solid or trussed lumber joist floor-ceiling assembly shall be constructed of the materials and in the manner specified in the individual U500 Series Floor-Ceiling Designs in the UL Fire Resistance Directory. The general construction features of the floor-ceiling assembly are summarized below:
 - A. Flooring System — Lumber or plywood subfloor with finish floor of lumber, plywood or Floor Topping Mixture* as specified in the individual Floor-Ceiling Design. Max diam of opening shall be 3 in.
 - B. Wood Joist* — Nom 10 in. deep (or deeper) lumber, steel or combination lumber and steel joists, trusses or Structural Wood Members* with bridging as required and with ends firestopped.
 - C. Gypsum Board* — Nom 4 ft wide by 5/8 in. thick as specified in the individual Floor-Ceiling Design. Gypsum board secured to wood joists or furring channels as specified in the individual Floor-Ceiling Design.
- 1A. Chose Wall — (Optional, Not Shown) — The through penetrants (Item 2) may be routed through a 1 hr fire rated single, double or staggered wood stud/gypsum board chose wall. Depth of chose wall stud cavity to be min 1/2 in. greater than diameter of opening cut in sole and top plates to accommodate the through penetrant (Item 2). The chose wall shall be constructed of the materials and in the manner specified in the individual U300 Series Wall and Partition Designs in the UL Fire Resistance Directory and shall include the following construction features:
 - A. Studs — Nom 2 by 4 in., 2 by 6 in. or double nom 2 by 4 in. lumber studs.
 - B. Sole Plate — Nom 2 by 4 in., 2 by 6 in. or parallel 2 by 4 in. lumber plates, tightly butted. Max diam of opening is 3 in.
 - C. Top Plate — The double top plate shall consist of two nom 2 by 4 in., two nom 2 by 6 in. or two sets of parallel 2 by 4 in. lumber plates, tightly butted. Max diam of opening is 3 in.
 - D. Gypsum Board* — Thickness, type, number of layers and fasteners shall be as specified in the individual Wall and Partition Design.
2. Cables — Aggregate cross-sectional area of cable in opening to be max 50 percent of the cross-sectional area of the opening. The annular space between the cable bundle and the periphery of the opening to be min 0 in. (point contact) to max 1 in. Cables to be rigidly supported on both sides of the floor-ceiling assembly. Any combination of the following types and sizes of copper conductor cables may be used:
 - A. Max 150 pair No. 24 AWG telephone cable with PVC insulation and jacket.
 - B. Max 2/C No. 10 with ground Type NM nonmetallic sheathed (Romex) cable with PVC insulation and jacket.
 - C. Max 3/C with ground 2/0 AWG aluminum SER cable with PVC insulation and jacket.
 - D. Max 3/C No. 10 AWG copper conductor steel clad cable.
 - E. Max 24 fiber optic cable.
 - F. RG 59U coaxial cable.
 - G. CAT 5 data cable.
3. Fill, Void or Cavity Materials*—Sealant — Min 3/4 in. thickness of sealant applied within the annulus flush with the top surface of the floor or sole plate and min 5/8 in. thickness of sealant applied within the annulus flush with the bottom surface of gypsum board or lower top plate. A min 1/2 in. diameter bead of sealant applied at the cable bundle/subflooring or sole plate interface and the cable bundle/gypsum board or top plate interface at point contact locations.

HILTI CONSTRUCTION CHEMICALS, DIV OF HILTI INC — CP 606 Flexible Firestop Sealant

*Bearing the UL Classification Mark



6 FIRE RATED PENETRATION DETAIL
NO SCALE SYSTEM FC-3074

System No. W-L-2344
F Rating - 2 Hr
T Rating - 2 Hr

System No. W-L-2474
F Ratings - 1 and 2 Hr (See Item 1)
T Rating - 0 Hr
L Rating At Ambient - Less Than 1 CFM/Sq Ft
L Rating at 400 F - 4 CFM/Sq Ft

SECTION A-A

SECTION A-A

1. Wall Assembly — The 2 hr fire-rated gypsum board/stud wall assembly shall be constructed of the materials and in the manner specified in the individual U300 or U400 Series Wall and Partition Designs in the UL Fire Resistance Directory and shall include the following construction features:

- A. Studs — Wall framing shall consist of either wood or steel channel studs. Wood studs to consist of nom 2 by 4 in. (51 by 102 mm) lumber spaced max 16 in. (406 mm) OC. Steel studs to be min 2-1/2 in. wide and spaced max 24 in. (610 mm) OC.
- B. Gypsum Board* — Min 5/8 in. thick, 4 ft wide with square or tapered edges. The gypsum board type, thickness, number of layers and orientation shall be as specified in the individual U300 or U400 Wall and Partition Design. Max diam of opening is 5-1/2 in. (138 mm).

2. Through Penetrants — One nonmetallic pipe to be centered within the firestop system. A non annular space of 3/8 to 1/2 in. is required within the firestop system. Pipe to be rigidly supported on both sides of wall assembly. The following types and sizes of nonmetallic pipes may be used:

- A. Acrylonitrile Butadiene Styrene (ABS) Pipe — Nom 4 in. diam (or smaller) Schedule 40 cellular or solid core ABS pipe for use in closed (process or supply) or vented (drain, waste or vent) piping systems.
- B. Polyvinyl Chloride (PVC) Pipe — Nom 4 in. diam (or smaller) Schedule 40 cellular or solid core PVC pipe for use in closed (process or supply) or vented (drain, waste or vent) piping systems.
- C. Chlorinated Polyvinyl Chloride (CPVC) Pipe — Nom 4 in. diam (or smaller) SDR 13.5 CPVC pipe for use in closed (process or supply) piping systems.

3. Firestop System — The firestop system shall consist of the following:

- A. Fill, Void or Cavity Material* - Wrap Strip — Two layers of nom 3/16 in. thick by 1-3/4 in. wide intumescent wrap strip individually wrapped around the outer circumference of the pipe and slid into the annular space such that wrap strip extends 3/4 in. beyond both surfaces of wall. Butted ends in successive layers shall be offset. Wrap strip secured with tape, wire or tie wire.

HILTI CONSTRUCTION CHEMICALS, DIV OF HILTI INC — CP648-E W451-3/4" Wrap Strip

*Bearing the UL Classification Mark

HILTI Firestop Systems

Reproduced by HILTI, Inc. Courtesy of Underwriters Laboratories, Inc. April 22, 2005

MITSCH DESIGN

200 S. Rangeline Rd. | Suite 226
Carmel, Indiana 46032

317.573.2222
www.mitschdesign.com

LS&A

Latimer Sommers & Associates, P.A.
CONSULTING ENGINEERS

3859 SW Summerfield Drive, Suite A
Topeka, Kansas 66614-9974

Telephone: (785) 233-3232
FAX: (785) 233-0647
Email: lsapa@lsapa.com

LSA PROJECT NO. 2404033

EVREN APARTMENTS
NEW CONSTRUCTION

EVREN APARTMENTS CLUBHOUSE
LEE'S SUMMIT, MISSOURI

PERMIT SET

STATE OF MISSOURI
BEARER OF THE SEAL
PROFESSIONAL ENGINEER

5-31-2024

MD PROJECT #	24097	CD	RB
DRAWN BY	CD	RB	
CHECKED BY	CD	RB	
PRELIMINARY			
PERMIT SET			
REVISION SCHEDULE	5/31/2024		
#	DATE	DESCRIPTION	

ALL IDEAS, DESIGNS AND PLANS (ORIGINAL WORKS OF AUTHORSHIP) FIXED IN A TANGIBLE MEDIUM OF EXPRESSION INDICATED OR PRESENTED BY THESE DRAWINGS AND DOCUMENTS ARE OWNED BY, AND ARE THE PROPERTY OF MITSCH DESIGN. ALL RIGHTS RESERVED, EXCEPT FOR USES EXPRESSLY PRINTED IN WRITING.

ELECTRICAL
DETAILS

E302



MITSCH
DESIGN

200 S. Rangeline Rd. | Suite 226
Carmel, Indiana 46032
.....
317.573.2222
www.mitschdesign.com



EVREN APARTMENTS
NEW CONSTRUCTION
EVREN APARTMENTS CLUBHOUSE
LEE'S SUMMIT, MISSOURI
PERMIT SET



5-31-2024

MD PROJECT #:	24097
DRAWN BY:	CJD
CHECKED BY:	RRB
PRELIMINARY	-
PERMIT SET	5/31/2024
#	REVISION SCHEDULE
	DATE DESCRIPTION

ALL IDEAS, DESIGNS AND PLANS (ORIGINAL WORKS OF AUTHORSHIP FIXED IN A TANGIBLE MEDIUM OF EXPRESSION) INDICATED OR PRESENTED BY THESE DRAWINGS AND DOCUMENTS ARE OWNED BY, AND ARE THE PROPERTY OF, MITSCH DESIGN. ALL RIGHTS RESERVED, EXCEPT FOR USES EXPRESSLY PERMITTED IN WRITING.

ELECTRICAL
SCHEDULES

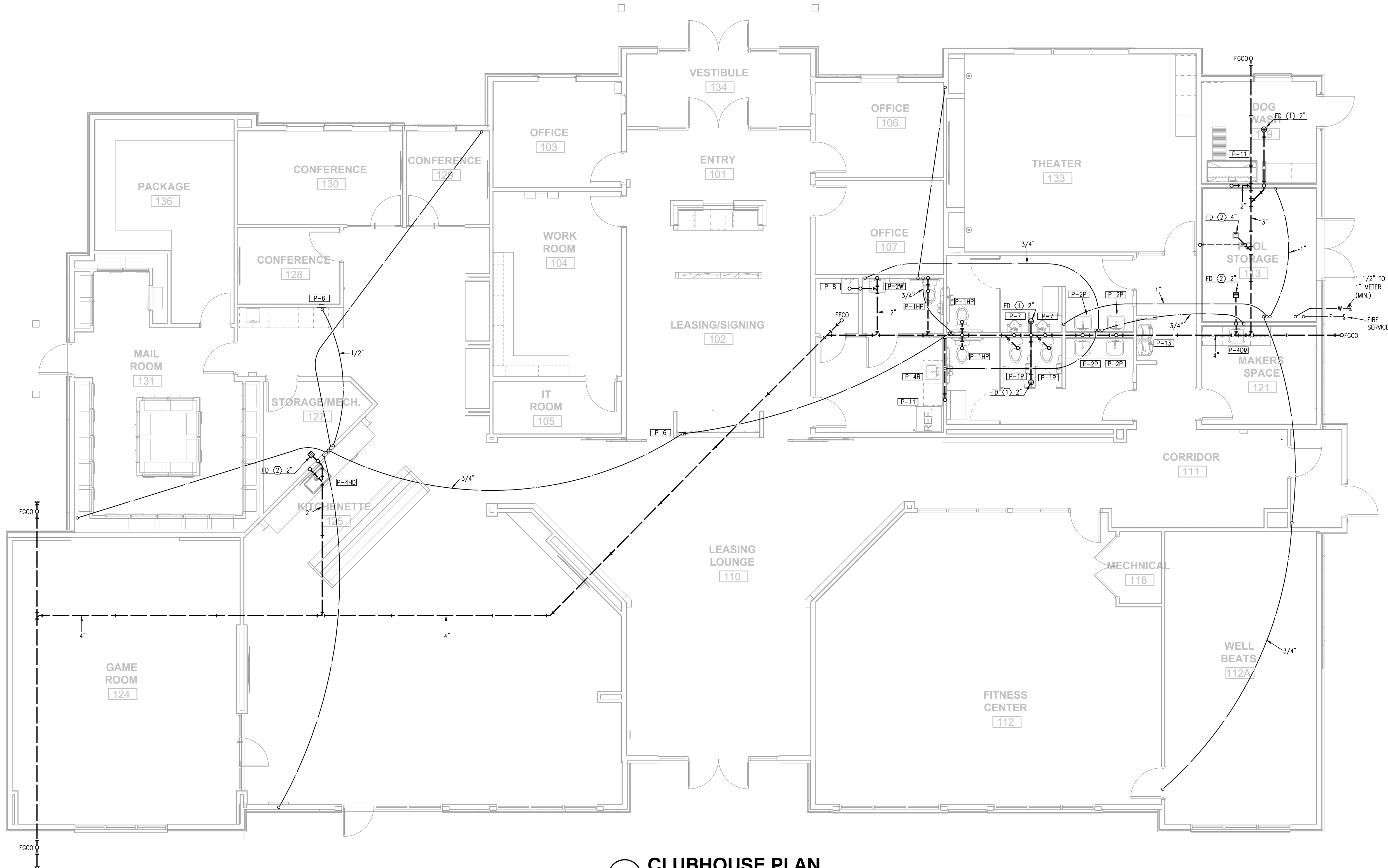
E303

ELECTRICAL PANEL SCHEDULE												
PANEL: A			LOCATION:				MOUNTING:					
BUS: 600 A			MAINS:	MB	VOLTAGE:	120/240	PHASE/WIRE:	1 Ph 3 Wire	KAIC: 42			
			WATTS		POLE		WATTS					
DESCRIPTION	A	B	BRKR	WIRE	POLE	WIRE	BRKR	A	B	DESCRIPTION		
PANEL B	35550	37150	300		1 2		100	6650		PANEL P		
		37150	2P		3 4		2P		7000			
AHU - CL3	7200		80	10	5 6	12	20	1200		RECEPTACLES		
		7200	2P	10	7 8	12	20		600	RECEPTACLES		
CU - CL3	3300		50	10	9 10	12	20	1000		TREAD		
		3300	2P	10	11 12	12	20		1000	TREAD		
WATER HEATER	2250		30	10	13 14	12	20	1000		TREAD		
		2250	2P	10	15 16	12	20		500	RECEPTACLES		
EUH - A	1500		20	12	17 18	12	20	500		RECEPTACLES		
		1500	2P	12	19 20	12	20		600	RECEPTACLES		
EUH - A	1500		20	12	21 22	12	20	500		RECEPTACLES		
		1500	2P	12	23 24	12	20		200	RECEPTACLES		
RECEPTACLES	400		20	12	25 26	12	20	400		RECEPTACLES		
LIGHTING		500	20	12	27 28	12	20		400	RECEPTACLES		
LIGHTING	500		20	12	29 30	12	20	800		RECEPTACLES		
LIGHTING		500	20	12	31 32	12	20		600	RECEPTACLES		
LIGHTING	500		20	12	33 34	12	20	1000		RECEPTACLES		
LIGHTING		500	20	12	35 36	12	20		1000	RECEPTACLES		
RECEPTACLES	400		20	12	37 38	12	20	1000		RECEPTACLES		
RECEPTACLES		600	20	12	39 40	12	20		800	RECEPTACLES		
RECEPTACLES	600		20	12	41 42	12	20	800		RECEPTACLES		
CONNECTED LOAD-WATTS	68550	67700						FEEDER LOAD-WATTS				
CONNECTED LOAD-AMPS	571	564						FEEDER LOAD-AMPS				
CONTINUOUS LOAD								FEEDER WIRE				
RECEPTACLES								FEEDER OCP		600 A		
NON-CONTINUOUS LOAD												
OTHER DIVERSIFIED LOAD			@	0								

ELECTRICAL PANEL SCHEDULE												
PANEL: B			LOCATION:				MOUNTING:					
BUS: 400 A			MAINS:	MLO	VOLTAGE:	120/240	PHASE/WIRE:	1 Ph 3 Wire	KAIC: 42			
			WATTS		POLE		WATTS					
DESCRIPTION	A	B	BRKR	WIRE	POLE	WIRE	BRKR	A	B	DESCRIPTION		
AHU - CL1	7200		80	4	1 2	12	20	400		RECEPTACLES		
		7200	2P	4	3 4	12	20		400	RECEPTACLES		
AHU - CL2	7200		80	4	5 6	12	20	400		RECEPTACLES		
		7200	2P	4	7 8	12	20		800	RECEPTACLES		
WATER HEATER	2250		30	10	9 10	12	20	600		RECEPTACLES		
		2250	2P	10	11 12	12	20		600	RECEPTACLES		
COFFEE MAKER	1000		20	12	13 14	12	20	400		RECEPTACLES		
RECEPTACLES		800	20	12	15 16	12	20		1000	RECEPTACLES		
QU - CL1	3300		50	8	17 18	12	20	400		RECEPTACLES		
		3300	2P	8	19 20	12	20		1000	RECEPTACLES		
QU - CL2	3300		50	8	21 22	12	20	600		RECEPTACLES		
		3300	2P	8	23 24	12	20		800	RECEPTACLES		
DSS - C	1200		25	10	25 26	12	20	800		RECEPTACLES		
		1200	2P	10	27 28	12	20		800	RECEPTACLES		
EUH - A	1500		20	12	29 30	12	20	1200		RECEPTACLES		
		1500	2P	12	31 32	12	20		1200	RECEPTACLES		
RECEPTACLES	600		20	12	33 34	12	20	800		RECEPTACLES		
LIGHTING		1000	20	12	35 36	12	20		600	RECEPTACLES		
LIGHTING	1000		20	12	37 38	12	50	800		RECEPTACLES		
LIGHTING		1000	20	12	39 40	12	2P		800	RECEPTACLES		
SPARE			41	42	12	20		200		FACE (NLO)		
SPARE			43	44	12	20		400		RECEPTACLES		
SPARE			45	46	12	20		400		RECEPTACLES		
SPARE			47	48						SPACE		
SPACE			49	50						SPACE		
SPACE			51	52						SPACE		
SPACE			53	54						SPACE		
CONNECTED LOAD-WATTS	35550	37150						FEEDER LOAD-WATTS				
CONNECTED LOAD-AMPS	296	310						FEEDER LOAD-AMPS				
CONTINUOUS LOAD								FEEDER WIRE				
RECEPTACLES								FEEDER OCP		300 A		
NON-CONTINUOUS LOAD												
OTHER DIVERSIFIED LOAD			@	0								

ELECTRICAL PANEL SCHEDULE												
PANEL: P			LOCATION:				MOUNTING:					
BUS: 125 A			MAINS:	MLO	VOLTAGE:	120/240	PHASE/WIRE:	1 Ph 3 Wire	KAIC: 10			
			WATTS		POLE		WATTS					
DESCRIPTION	A	B	BRKR	WIRE	POLE	WIRE	BRKR	A	B	DESCRIPTION		
PUMP	2000		40	8	1 2	12	30	1500		WH-CL2		
VERIFY HP		2000	2P	8	3 4	12	2P		1500			
EUH-B	2500		30	10	5 6							
		2500	2P	10	7 8	12	20		400	RECEPTACLES		
HEATERS	200		20	12	9 10	12	20	250		EXHAUST FAN		
RECEPTACLES		400	20	12	11 12							
GRILLS	200		20	12	13 14	12	20					
FIRE PIT		200	20	12	15 16	12	20					
					17 18	12	20					
					19 20	12	20					
					21 22	12	20					
					23 24	12	20					
CONNECTED LOAD-WATTS	6650	7000						FEEDER LOAD-WATTS				
CONNECTED LOAD-AMPS	55	58						FEEDER LOAD-AMPS				
CONTINUOUS LOAD								FEEDER WIRE				
RECEPTACLES								FEEDER OCP		100 A		
NON-CONTINUOUS LOAD												
OTHER DIVERSIFIED LOAD			@	0								

Light Fixture Schedule							
MARK	DESCRIPTION	MFGR	MODEL	MOUNTING	FINISH	LAMPS	NOTES
X1	Ext	Royal Pacific	RXL-5-RW	surface	white/red	1.5W LED	remote capable
X2	Ext w/heads	Royal Pacific	RXEL39 - RW	surface	white/red	1.5W LED	
X4	Remote Head	Lithonia	ELA-LED	surface	std	1W LED	
X5	Dual-Head Emergency	Lithonia	ELM4L	surface	std	640 lumen	



1 CLUBHOUSE PLAN
3/16"=1'-0" BELOW-GRADE PLUMBING

- NOTES:
1. ALL DRAIN, WASTE AND VENT PIPING IS 2" UNLESS NOTE OTHERWISE.
 2. ALL SUPPLY PIPING IS 1/2" UNLESS NOTED OTHERWISE. SUPPLY PIPING IS BELOW SLAB AS SHOWN.
 3. CONNECT ALL APPLIANCES OR EQUIPMENT PER MANUFACTURER'S INSTRUCTIONS.
 4. ALL PLUMBING VENTS SHALL BE 10 FEET FROM OPENINGS OR INTAKES.
 5. THERE SHALL BE NO PVC WITHIN RETURN AIR PLENUMS.
 6. ALL FIXTURES SHALL HAVE AIR CHAMBERS OR BLADDER TYPE SHOCK SUPPRESSORS FOR EACH CHASE.
 7. SEE THE ARCHITECTURAL DRAWINGS FOR ALL FIXTURES MOUNTING HEIGHTS.
 8. REFER TO THE ARCHITECTURAL DRAWINGS FOR FLOOR DRAIN LOCATIONS AND FLOOR SLOPES IF PRESENT. FLOOR DRAINS ARE TYPE 1, 2" UNLESS NOTED OTHERWISE.
 9. ROUTE DRAIN PIPING FROM WATER HEATERS, AIR HANDLERS OR EQUIPMENT TO FLOOR DRAINS. PROVIDE PROPER TRAPS.
 10. ROUTE NO PIPING OVER ELECTRICAL EQUIPMENT.
 11. PROVIDE 1/2" TYPE 1-PC INSULATION ON HW PIPING FOR 8FT AFTER WATER HEATER.
 12. SEE ARCHITECTURAL DRAWINGS FOR FIXTURES AND DETAILS.



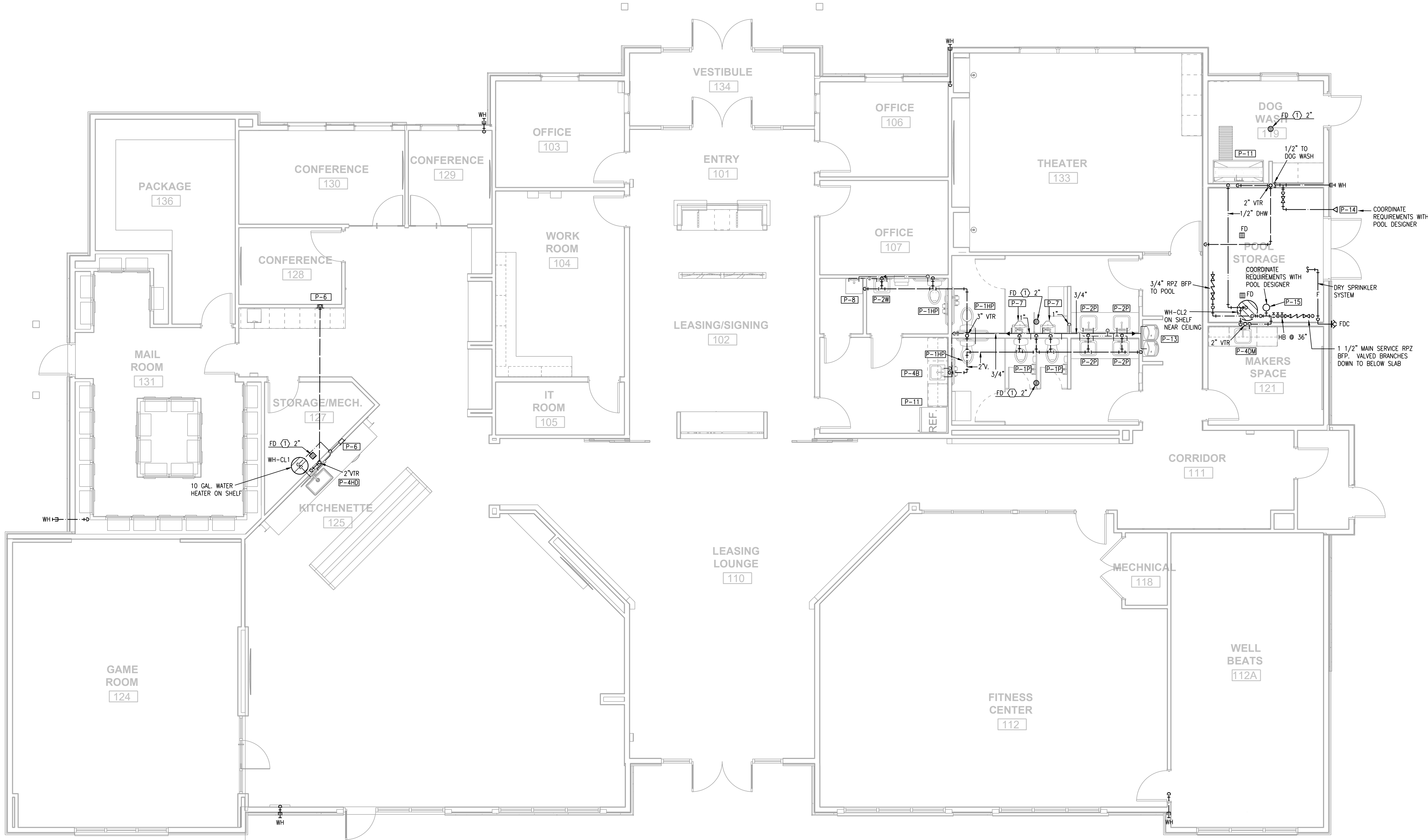
5-31-2024

MD PROJECT #:	24097
DRAWN BY:	CJD
CHECKED BY:	RRB
PRELIMINARY	-
PERMIT SET	5/31/2024
PERMIT SET	
REVISION SCHEDULE	
#	DATE DESCRIPTION

ALL IDEAS, DESIGNS AND PLANS (ORIGINAL WORKS OF AUTHORSHIP FIXED IN A TANGIBLE MEDIUM OF EXPRESSION) INDICATED OR PRESENTED BY THESE DRAWINGS AND DOCUMENTS ARE OWNED BY, AND ARE THE PROPERTY OF, MITSCH DESIGN. ALL RIGHTS RESERVED, EXCEPT FOR USES EXPRESSLY PERMITTED IN WRITING.

**CLUBHOUSE PLAN -
BELOW-GRADE
PLUMBING**

P101



- NOTES:
1. ALL DRAIN, WASTE AND VENT PIPING IS 2" UNLESS NOTE OTHERWISE.
 2. ALL SUPPLY PIPING IS 1/2" UNLESS NOTED OTHERWISE. SUPPLY PIPING IS BELOW SLAB AS SHOWN.
 3. CONNECT ALL APPLIANCES OR EQUIPMENT PER MANUFACTURER'S INSTRUCTIONS.
 4. ALL PLUMBING VENTS SHALL BE 10 FEET FROM OPENINGS OR INTAKES.
 5. THERE SHALL BE NO PVC WITHIN RETURN AIR PLENUMS.
 6. ALL FIXTURES SHALL HAVE AIR CHAMBERS OR BLADDER TYPE SHOCK SUPPRESSORS FOR EACH CHASE.
 7. SEE THE ARCHITECTURAL DRAWINGS FOR ALL FIXTURES MOUNTING HEIGHTS.
 8. REFER TO THE ARCHITECTURAL DRAWINGS FOR FLOOR DRAIN LOCATIONS AND FLOOR SLOPES IF PRESENT. FLOOR DRAINS ARE TYPE 1, 2" UNLESS NOTED OTHERWISE.
 9. ROUTE DRAIN PIPING FROM WATER HEATERS, AIR HANDLERS OR EQUIPMENT TO FLOOR DRAINS. PROVIDE PROPER TRAPS.
 10. ROUTE NO PIPING OVER ELECTRICAL EQUIPMENT.
 11. PROVIDE 1/2" TYPE 1-PC INSULATION ON HW PIPING FOR 8FT AFTER WATER HEATER.
 12. SEE ARCHITECTURAL DRAWINGS FOR FIXTURES AND DETAILS.

MD PROJECT #	24037	
DRAWN BY:	CAD	
CHECKED BY:	RRB	
PRELIMINARY	-	
PRICING SET	-	
PERMIT SET	5/31/2024	
REVISION SCHEDULE		
#	DATE	DESCRIPTION

ALL IDEAS, DESIGNS AND PLANS (ORIGINAL WORKS OF AUTHORSHIP FIXED IN A TANGIBLE MEDIUM OF EXPRESSION) INDICATED OR PRESENTED BY THESE DRAWINGS AND DOCUMENTS ARE OWNED BY, AND ARE THE PROPERTY OF MITSCH DESIGN. ALL RIGHTS RESERVED, EXCEPT FOR USES EXPRESSLY PERMITTED IN WRITING.

1 CLUBHOUSE PLAN
3/16"=1'-0"
PLUMBING

EVREN APARTMENTS
NEW CONSTRUCTION

EVREN APARTMENTS CLUBHOUSE
LEE'S SUMMIT, MISSOURI

PERMIT SET



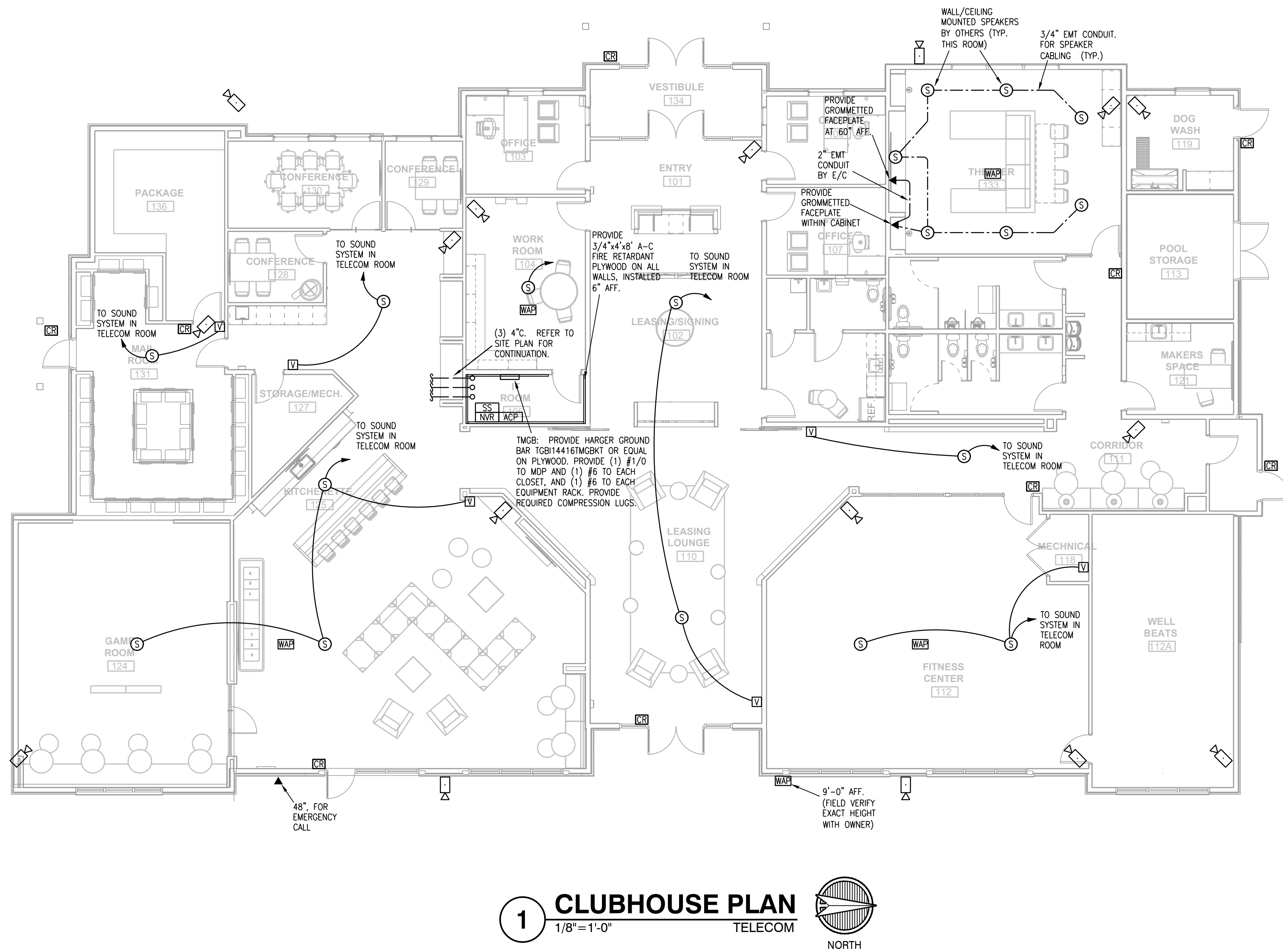
5-31-2024

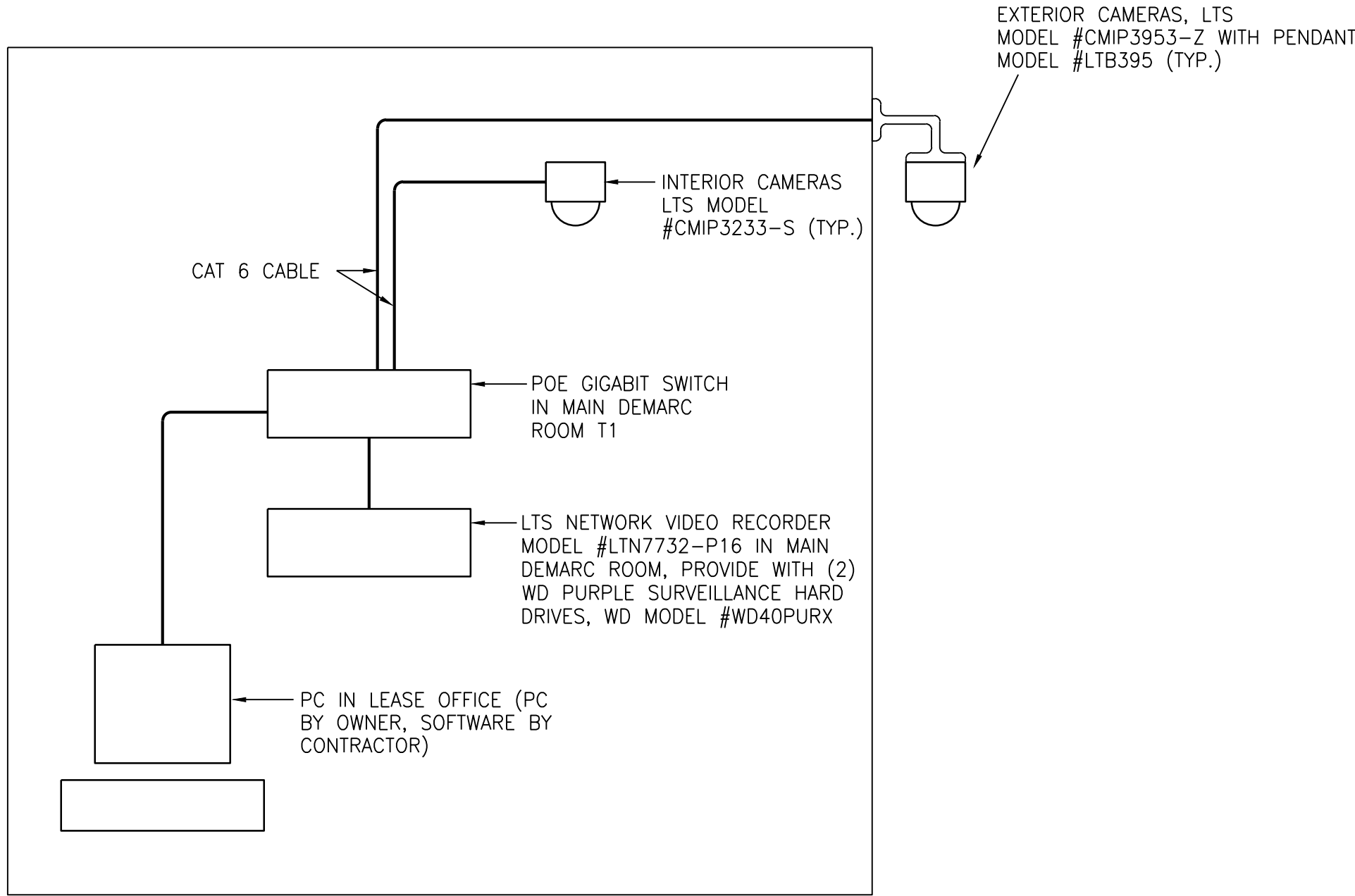
MD PROJECT #:		24097
DRAWN BY:		CJD
CHECKED BY:		RRB
PRELIMINARY PRICING SET		-
PERMIT SET		5/31/2024
REVISION SCHEDULE		
#	DATE	DESCRIPTION

ALL IDEAS, DESIGNS AND PLANS (ORIGINAL WORKS OF AUTHORSHIP FIXED IN A TANGIBLE MEDIUM OF EXPRESSION) INDICATED OR PRESENTED BY THESE DRAWINGS AND DOCUMENTS ARE OWNED BY, AND ARE THE PROPERTY OF MITSCH DESIGN. ALL RIGHTS RESERVED, EXCEPT FOR USES EXPRESSLY PERMITTED IN WRITING.

CLUBHOUSE FLOOR
PLAN - TELECOM

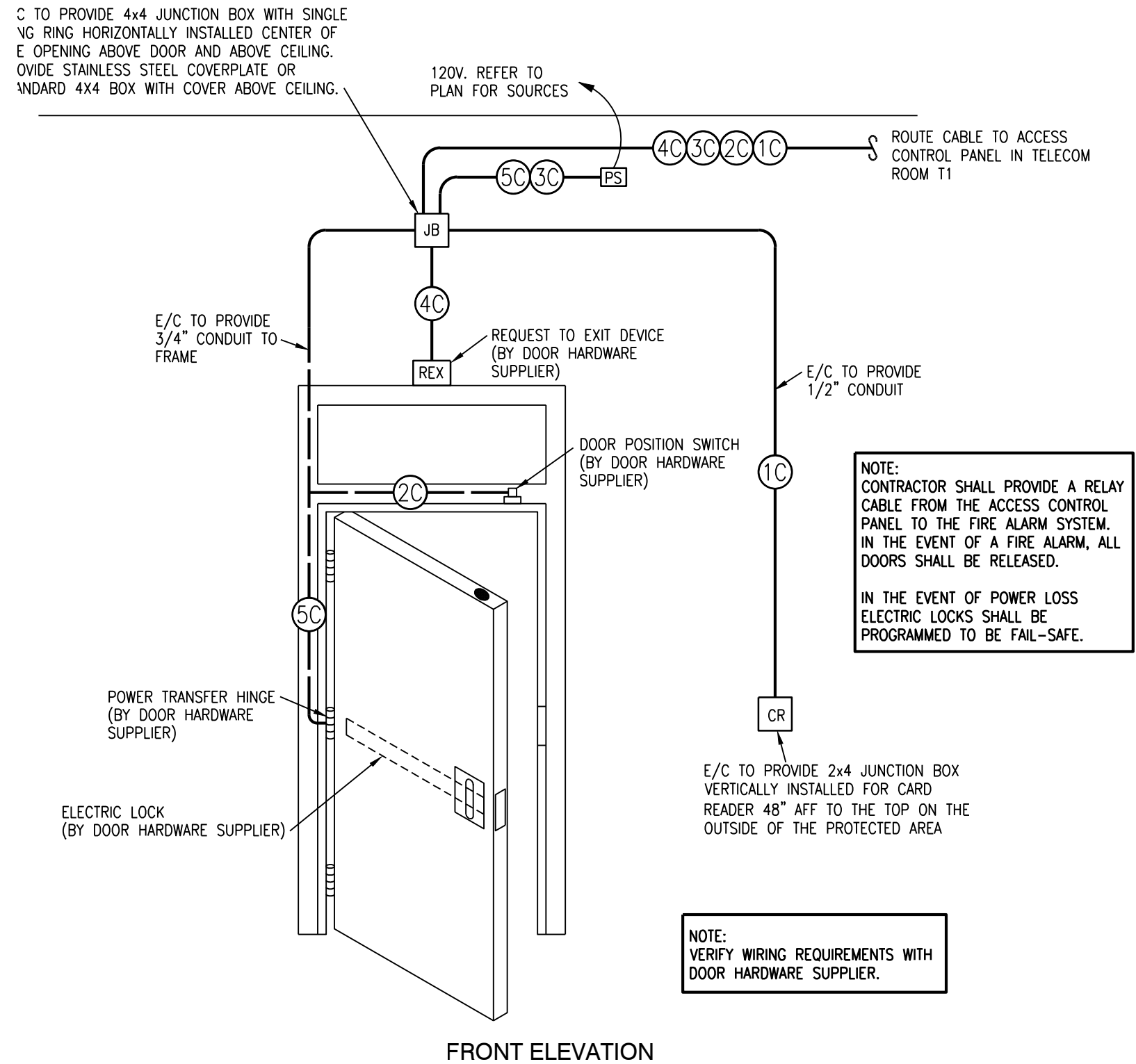
T101





1 **TYPICAL SECURITY CAMERA DETAIL**
NO SCALE

LEGEND:	
10	PROXIMITY CARD READER (ORANGE) 18GA./6 COND. TWISTED OVERALL SHIELD, RISER RATED CABLE.
20	MAGNETIC SWITCH (WHITE) 18GA./2 COND. TWISTED OVERALL SHIELD, RISER RATED CABLE.
30	ELECTRIC LOCK (GRAY) 16GA./4 COND. TWISTED OVERALL SHIELD, RISER RATED CABLE.
40	REQUEST TO EXIT (BLUE) 18GA./4 COND. TWISTED OVERALL SHIELD, RISER RATED CABLE.
50	ELECTRIC LOCK FROM PS TO PUSHBAR 18GA./4 COND. TWISTED OVERALL SHIELD, RISER RATED CABLE.



2 **ACCESS CONTROL DOOR DETAIL**
NO SCALE
SINGLE DOOR ENTRY

ACCESS CONTROL CABLE SCHEDULE				
MARK	MANUFACTURER	MODEL/PART NUMBER	DESCRIPTION	REMARKS
10	BELDEN	538AF5	INSIDE ACCESS CONTROL CABLE (COMBO CABLE)	1
50	BELDEN	5302UE	ELECTRIC LOCK CABLE 18 GA 4 COND STRANDED	1, 2
20	CSC	759218	OUTSIDE ACCESS CONTROL CABLE (COMBO CABLE)	1

REMARKS:

- 1 - PROVIDED AND INSTALLED BY E/C.
- 2 - E/C TO ROUTE CABLE FROM DEVICE AND LEAVE A 8'-0" SERVICE LOOP AT THE BURGLAR ALARM PANEL. PROVIDE A 24" SERVICE LOOP AT DEVICE. PROVIDE A MECHANICALLY PRINTED LABEL ON EACH END OF EACH CABLE FOR REFERENCE.
- 3 - PROVIDED AS A PART OF THE DOOR HARDWARE PACKAGE.

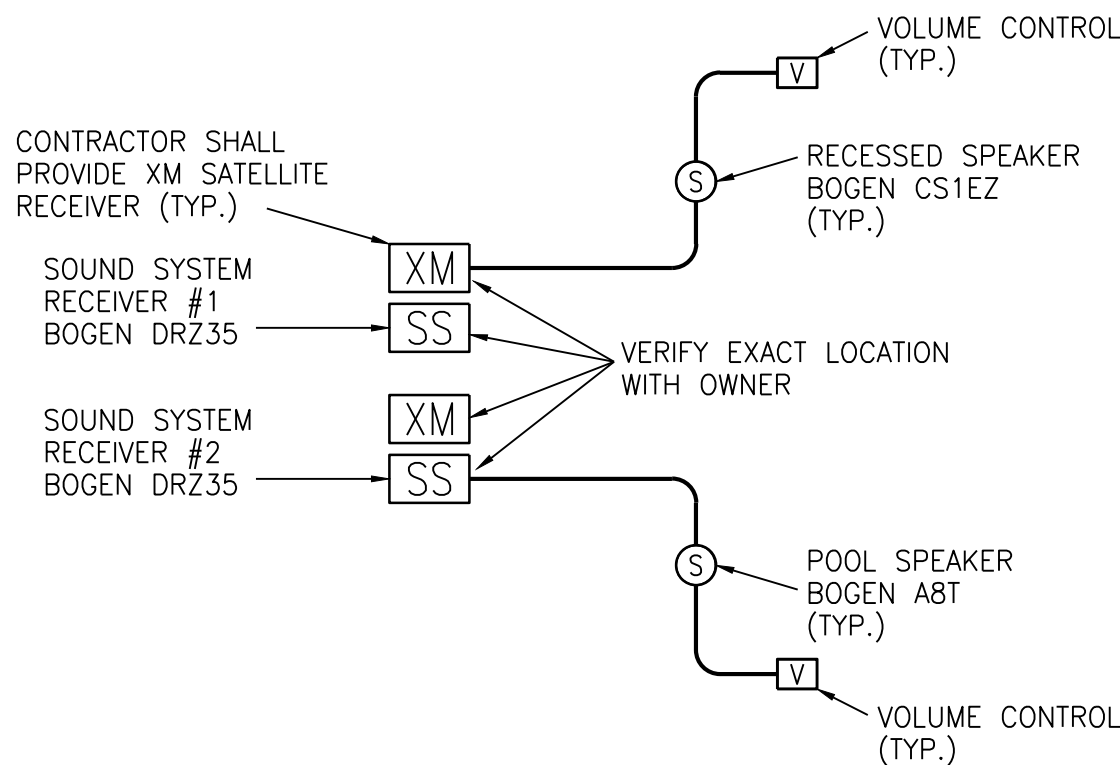
SECURITY SCHEDULE				
MARK	MANUFACTURER	MODEL NUMBER	DESCRIPTION	REMARKS
CR	HID	RP40/RP15	PROXIMITY CARD READER	1
			FOBs	3
ACPT	KANTECH	KT-400	ACCESS CONTROL PANEL	

REMARKS:

- 1 - AT GARAGE ONLY.
- 2 - DOUBLE POLE, DOUBLE THROW FOR ACCESS CONTROL AND BURGLAR ALARM.
- 3 - PROVIDE 300
- 4 - BY DOOR HARDWARE PROVIDER, REFER TO DOOR HARDWARE SPECIFICATIONS.

ACCESS CONTROL LEGEND	
ACPT	ACCESS CONTROL PANEL
CR	HID CARD READER
REX	REQUEST TO EXIT *
DP	DOOR POSITION SWITCH *
EL	ELECTRIC LOCK (24V DC.) *
PS	POWER SUPPLY (24V DC.) *
ADA	ADA PUSH BUTTON *
DADA	DUAL ADA PUSH BUTTON *
ADAM	ADA MOTORIZED OPERATOR *
AAMS	AUDIO INTERCOM MASTER STATION
AIC	AUDIO INTERCOM
DDPT	DOUBLE THROW, DOUBLE POLE DOOR POSITION SWITCH *

* - INDICATES PROVIDED BY DOOR HARDWARE SUPPLIER. REFER TO DOOR HARDWARE SPECIFICATIONS FOR FURTHER WIRING/POWER REQUIREMENTS.



3 **TYPICAL TUNER/SOUND SYSTEM**
NO SCALE

5-31-2024

MD PROJECT #:	24097
DRAWN BY:	CJD
CHECKED BY:	RRB
PRELIMINARY	-
PRICING SET	-
PERMIT SET	5/31/2024
REVISION SCHEDULE	
#	DATE DESCRIPTION

ALL IDEAS, DESIGNS AND PLANS (ORIGINAL WORKS OF AUTHORSHIP) FIXED IN A TANGIBLE MEDIUM OF EXPRESSION INDICATED OR PRESENTED BY THESE DRAWINGS AND DOCUMENTS ARE OWNED BY, AND ARE THE PROPERTY OF MITSCH DESIGN. ALL RIGHTS RESERVED, EXCEPT FOR USES EXPRESSLY PERMITTED IN WRITING.