



1627 MAIN STREET, SUITE 600
KANSAS CITY, MO 64108



1627 MAIN STREET, SUITE 100
KANSAS CITY, MO 64108



1301 BURLINGTON STREET
NORTH KANSAS CITY, MO 64116

LEE'S SUMMIT MUNICIPAL AIRPORT LEE'S SUMMIT AIRPORT

EASTSIDE DEVELOPMENT
CITY PROJECT NO. - 47732472



LEES SUMMIT MUNICIPAL AIRPORT
LEES SUMMIT, MO

PROJECT NO: 2219
CAD DWG FILE: Lee's Summit - Hangar 2.rvt
DESIGNED BY: DM
DRAWN BY: DM
CHECKED BY: WAI
APPROVED BY: WAI
COPYRIGHT 2023

SHEET TITLE
BUILDING ELEVATIONS

A201

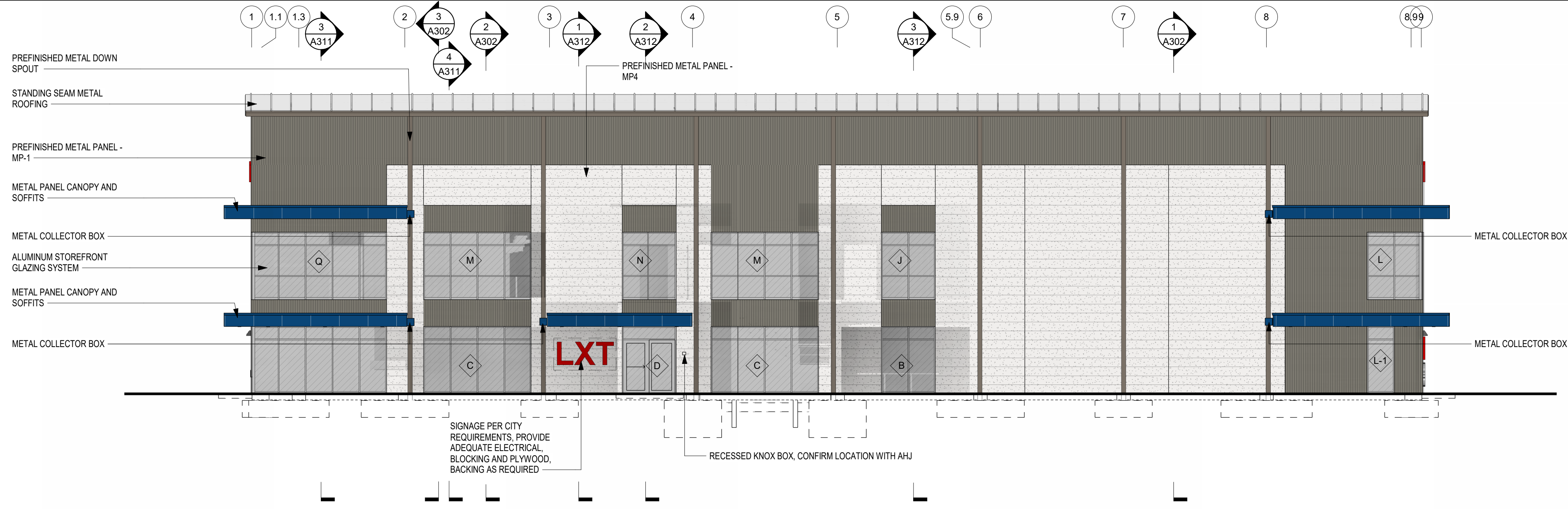
SHEET OF



- BID ALTERNATIVE 1 - GSE storage / lean-to
- A. Exterior envelope: removal of associated exterior wall finishes, roofing, overhead sectional doors, man door
 - B. Structural: removal of columns, beams, framing, associated structure, floor slab and footings.
 - C. Paving: without the GSE storage the slab footprint will become concrete paving per civil similar to adjacent paving north and west of GSE storage.
 - D. MEP: removal of associated mechanical, plumbing, and electrical within the space for items not also intended for the remainder of the building.
 - E. Demising wall: CMU 2 hour rated assembly, rated ceiling door, and rated man door are removed. Overhead door and man door within the demising wall / exterior wall to be replaced with an overhead sectional door similar to door west of trash enclosure, and insulated hollow metal exterior door similar to other man doors at hangar. Associated exterior electrical / plumbing items such as wall light fixtures, and hose bibs to shift south from GSE north wall to hangar north wall.
 - F. Add cost of PEMB wall framing, insulation, metal panel (MP-2), downspouts extended to storm sewer, and associated cost of exterior wall assembly needed along the face of GSE storage.

EXTERIOR MATERIALS AND FINISHES

- PREFINISHED EXTERIOR METAL PANELS:
 - MP1 - FLUTED - VERTICAL PANELS - BUTLER BRII WALL PANEL - BUTLER COOL GRAY STONE
 - MP2 - VERTICAL PANELS - AWIP ST40 INSULATED PANEL - PEARL GRAY
 - MP3 - VERTICAL PANELS - AWIP HE40 INSULATED PANEL - REGAL WHITE
 - MP4 - HORIZONTAL PANELS - AWIP HE40 INSULATED PANEL - REGAL WHITE
 - MP5 - NOT IN USE
- TRANSLUCENT WALL PANELS:
 - LIGHT-TRANSMITTING WALL PANELS
- CANOPY:
 - PREFINISHED EXTERIOR METAL PANELS - TO MATCH AWIP ROYAL BLUE
- GLASS:
 - 1" INSULATED SOLARBAN 60 (2) SOLARGRAY + CLEAR, LOW E GLASS WITH ARGON FILL - (TO MEET U-VALUE OF .29 OR BETTER AND SHGC OF .25 OR BETTER)
- STOREFRONT SYSTEM:
 - ANODIZED ALUMINUM FRAMES, CLEAR FINISH - AL-1
- HOLLOW METAL DOORS:
 - INSULATED, PAINTED TO MATCH ADJACENT WALLS. U.N.O.
- OVERHEAD DOORS:
 - PREFINISHED TO MATCH AWIP PEARL GRAY
- LOUVERS:
 - PREFINISHED TO MATCH ADJACENT WALL COLOR
- FLASHING:
 - PREFINISHED METAL FLASHING TO MATCH ADJACENT WALL COLORS
- DOWNSPOUTS / GUTTERS:
 - PREFINISHED METAL TO MATCH BUTLER COOL GRAY STONE, PREFINISHED TO MATCH ROYAL BLUE AT CANOPIES
- BOLLARDS:
 - PAINTED IN CONTRASTING COLOR MATCHING BUILDING FINISHES
- CAULK:
 - TO MATCH ADJACENT WALL FINISHES
- SIGNAGE:
 - 4" DEEP CHANNEL LETTER SIGNS FRONT-LIT PIN MOUNTED - TO MEET CITY SIGNAGE STANDARDS
- FURNISH AND INSTALL APPROVED ADDRESS NUMBERS ON FRONT AND REAR OF BUILDING IN CONTRASTING COLOR PER CITY AND FIRE CODE REQUIREMENTS.
- ROOFING:
 - STANDING SEAM ROOF - BUTLER - COOL IGLOO WHITE
- TRASH ENCLOSURE CMU:
 - WATER REPELANT CMU WITH INTEGRAL FINISH - ECHELON SMOOTH FACE - TO MATCH PEARL GRAY



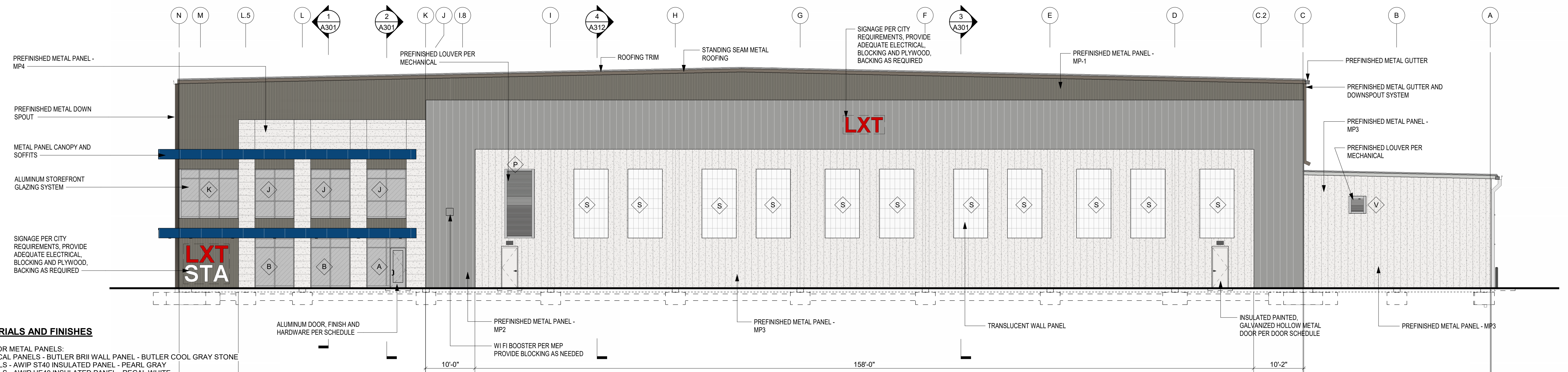
T.O. WALL
142' - 0"

T.O. HANGAR DOOR
128' - 0"

Level 02
114' - 0"

Level 01
100' - 0"

SOUTH ELEVATION
3/32" = 1'-0"



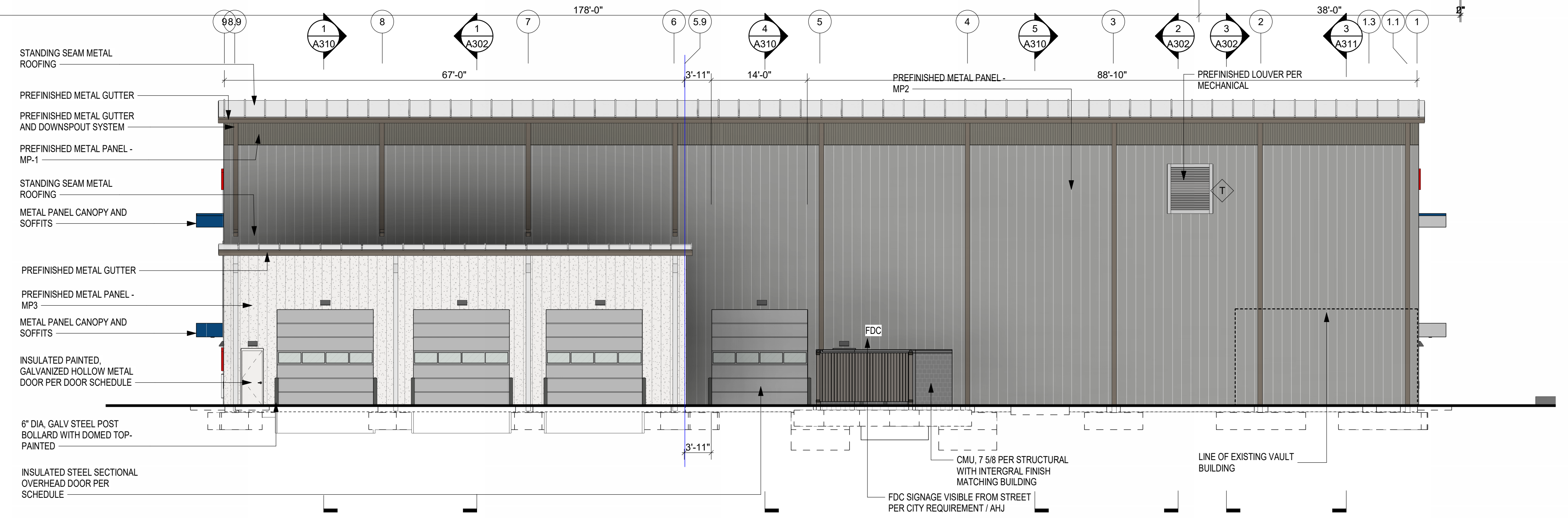
T.O. WALL
142' - 0"

T.O. HANGAR DOOR
128' - 0"

Level 02
114' - 0"

Level 01
100' - 0"

EAST ELEVATION
3/32" = 1'-0"

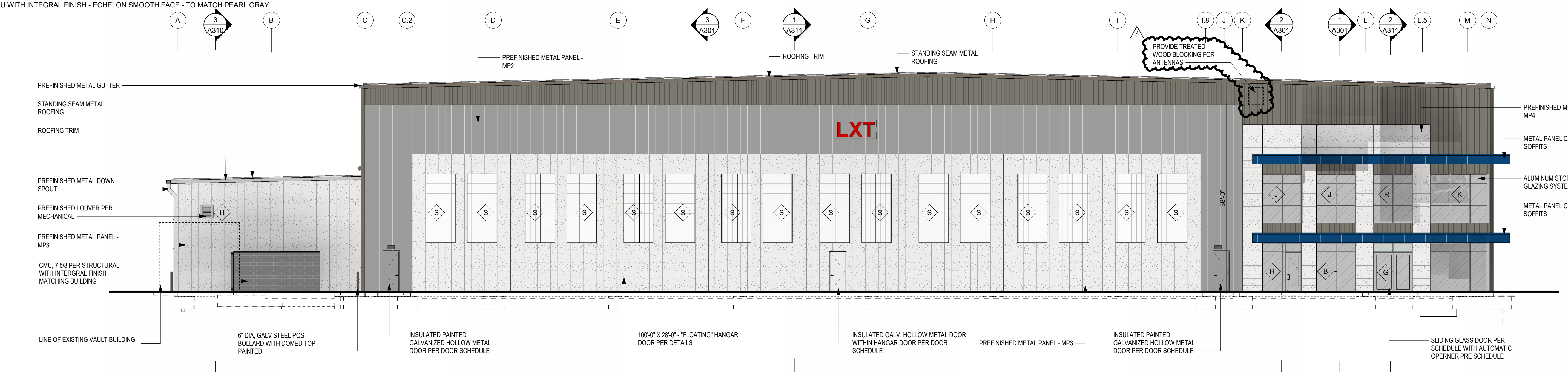


T.O. WALL
142' - 0"

T.O. HANGAR DOOR
128' - 0"

Level 01
100' - 0"

NORTH ELEVATION
3/32" = 1'-0"



T.O. WALL
142' - 0"

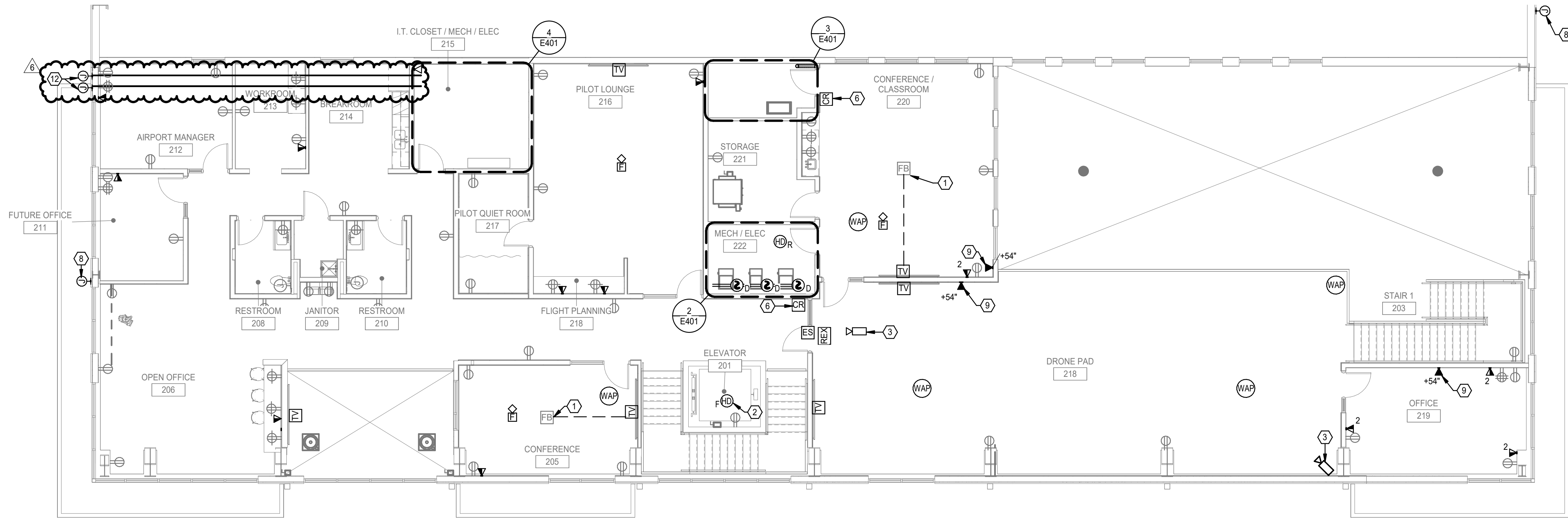
T.O. HANGAR DOOR
128' - 0"

Level 02
114' - 0"

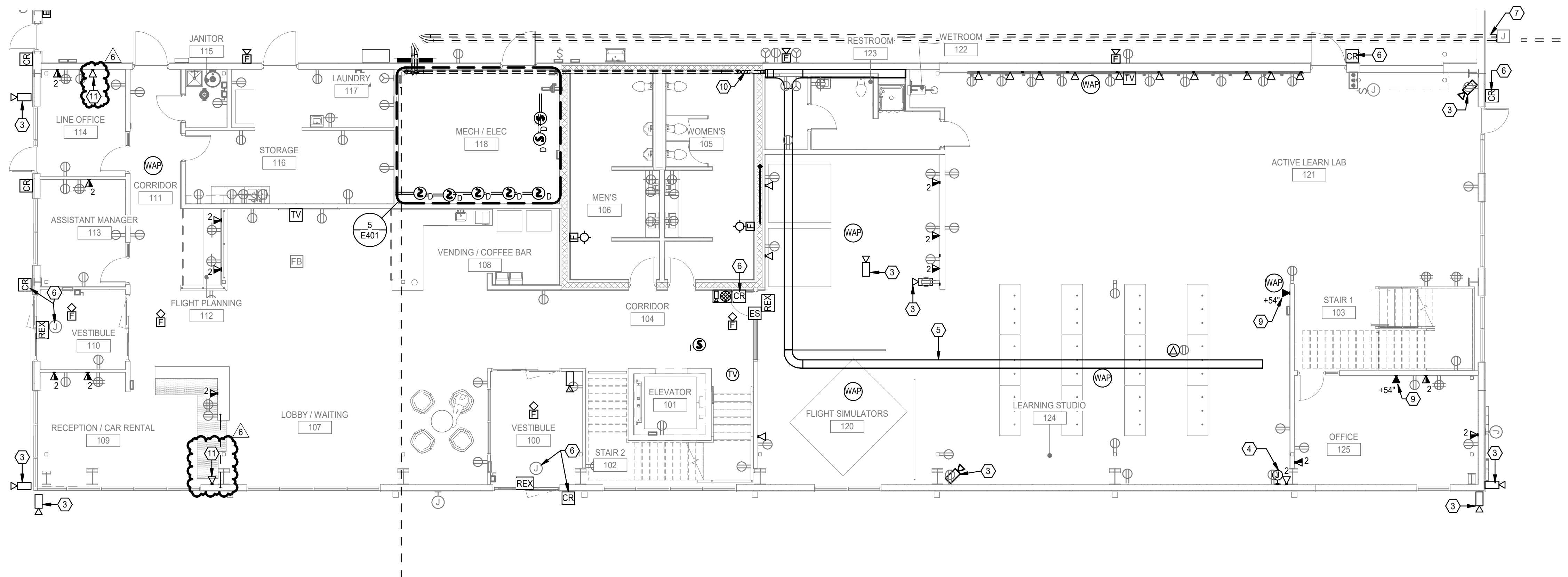
Level 01
100' - 0"

WEST ELEVATION
3/32" = 1'-0"

11/17/2024 8:07:06 AM



SYSTEMS SECOND FLOOR PLAN 2 1/8" = 1'-0"



SYSTEMS FIRST FLOOR PLAN 1 1/8" = 1'-0"

GENERAL SHEET NOTES

- WHERE TELEDATA OUTLET SYMBOL IS SHOWN PROVIDE BACK BOX AND CONDUIT ROUGH IN TO ABOVE ACCESSIBLE CEILING. REFER TO COMMUNICATION ROUGH-IN DETAIL FOR ADDITIONAL INFORMATION.
- COORDINATE ALL TELECOMM DATA DEVICE LOCATION AND MOUNTING HEIGHTS WITH OWNER/ARCHITECT PRIOR TO INSTALLATION.
- PROVIDE TRACER WIRE WITH PULL STRINGS.

ELECTRICAL KEYNOTES

- PROVIDE 1-1/4" CONDUIT FROM FLOOR BOX/POKE-THRU TO TV OUTLET LOCATION FOR DATA AND AV CABLING.
- HEAT DETECTOR IN ELEVATOR SHAFT WITHIN 2FT OF SPRINKLER HEAD. REFER TO ELEVATOR INTERLOCK WITH FIRE ALARM DETAIL FOR ADDITIONAL INFORMATION. COORDINATE LOCATION WITH SPRINKLER PROVIDER.
- PROVIDE JUNCTION BOX AND 3/4" CONDUIT ROUGH IN FOR CAMERA. ROUTE CONDUIT BACK TO IT ROOM. COORDINATE EXACT LOCATION AND REQUIREMENTS WITH OWNER AND SECURITY PROVIDER. IN AREAS WITH NO ABOVE CEILING ROUTE CONDUIT HIGH AND TIGHT TO STRUCTURE ABOVE.
- PROVIDE BOX WITH 1-1/4" EMPTY CONDUIT WITH PULL STRINGS TO PROJECTOR OUTLET BOX.
- 2"X12" WIRE MESH CABLE TRAY ABOVE ACCESSIBLE CEILING.
- PROVIDE POWER ROUGH IN FOR CARD READER. REFER TO ACCESS CONTROL DETAIL FOR ADDITIONAL INFORMATION.
- (2)X4" EMPTY CONDUITS ROUTED BELOW GRADE FROM TELECOM JUNCTION BOX AND STUBBED UP IN ELECTRICAL ROOM. CAP CONDUITS WITH PULL STRINGS. COORDINATE EXACT LOCATION OF JUNCTION BOX WITH TELECOM SERVICE PROVIDER. PROVIDE TRACER WIRE WITH PULL STRINGS. ROUTE CONDUITS TO SERVICE PROVIDER DEMARC LOCATION. COORDINATE LOCATION WITH SERVICE PROVIDER.
- MOUNT SINGLE BOX AT 15'-0" A.F.G. WITH 1" CONDUIT WITH CAT 6A ROUTED WITHIN STRUCTURE FOR OWNER SUPPLIED EXTERIOR WIFI BOOSTER EQUAL TO CISCO CATALYST 8166 SERIES WITH BRACKET AND ARM. REFER TO MANUFACTURER FOR MOUNTING REQUIREMENTS. PROVIDE BLOCKING AS REQUIRED. COORDINATE EXACT LOCATION WITH OWNER AND ARCHITECT.
- PROVIDE DOUBLE GANGE BACK BOX WITH 4" LUG SPACING MATCHING PHONE HARDWARE. REFER TO PHONE MANUFACTURER FOR EXACT MOUNTING REQUIREMENTS.
- ROUTE (2)X4" EMPTY CONDUIT TO ABOVE CEILING ON FIRST FLOOR BELOW AND PROVIDE FIRE RATED PENETRATION THRU FIRE WALL. CONDUIT TO
- ROUTE (1)X1" EMPTY CONDUIT WITH PULL STRINGS TO ROOF FOR COAX CABLING TO ANTENNA. PROVIDE COAX OUTLET WHERE SHOWN. COORDINATE EXACT LOCATION AND REQUIREMENTS WITH OWNER.
- MOUNT SINGLE BOX AT +35'-0" A.F.G. WITH 1" CONDUIT ROUTED TO LOCATIONS SHOWN ON FIRST FLOOR FOR OWNER RELOCATED ANTENNA. PROVIDE BLOCKING AS REQUIRED. COORDINATE EXACT LOCATION WITH OWNER. PROVIDE GROUNDING PER NEC.



1627 MAIN STREET, SUITE 600
KANSAS CITY, MO 64108



1627 MAIN STREET, SUITE 100
KANSAS CITY, MO 64108



1301 BURLINGTON STREET
NORTH KANSAS CITY, MO 64116

LEE'S SUMMIT MUNICIPAL AIRPORT
LEE'S SUMMIT, MISSOURI

EASTSIDE DEVELOPMENT
CITY PROJECT NO. - 47732472

03-29-2024

LEES SUMMIT MUNICIPAL AIRPORT AUTHORITY
LEES SUMMIT, MO

MARK DATE DESCRIPTION

PROJECT NO: 022-04268

CAD DWG FILE: Lee's Summit - Hangar 2.rvt

DESIGNED BY: SH

DRAWN BY: OH

CHECKED BY: AF

APPROVED BY: TWO

COPYRIGHT 2023

SHEET TITLE

SYSTEMS FLOOR
PLANS

E301

SHEET OF



1627 MAIN STREET, SUITE 600
KANSAS CITY, MO 64108



1627 MAIN STREET, SUITE 100
KANSAS CITY, MO 64108



1301 BURLINGTON STREET
NORTH KANSAS CITY, MO 64116

LEE'S SUMMIT MUNICIPAL AIRPORT
LEE'S SUMMIT, MISSOURI

EASTSIDE DEVELOPMENT
CITY PROJECT NO. - 47732472

03-29-2024

LEES SUMMIT MUNICIPAL AIRPORT AUTHORITY
LEES SUMMIT, MO

11/8/24 PR-07
MARK DATE DESCRIPTION

PROJECT NO: 022-04268
CAD DWG FILE: Lee's Summit - Hangar 2.rvt
DESIGNED BY: SH
DRAWN BY: OH
CHECKED BY: AF
APPROVED BY: TWO
COPYRIGHT 2023

SHEET TITLE

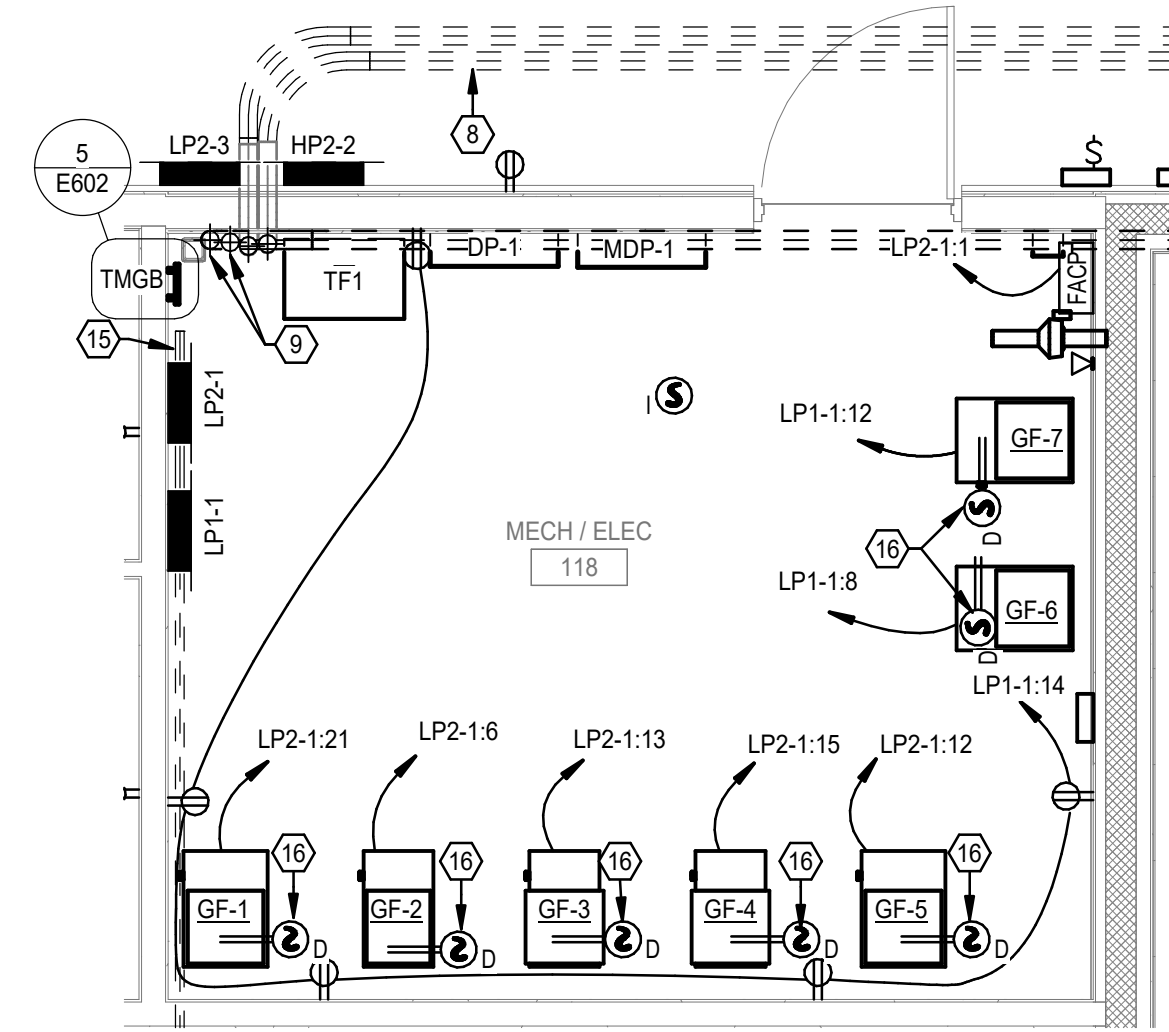
ENLARGED PLANS

E401

SHEET OF

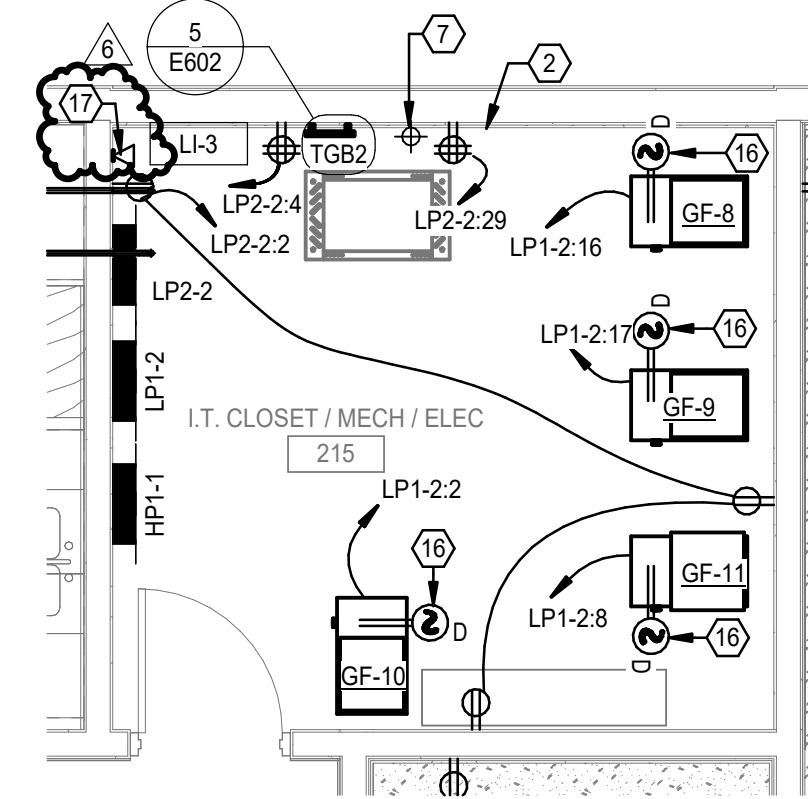
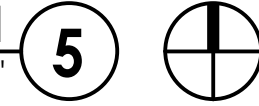
ELECTRICAL KEYNOTES

- LADDER CABLE TRAY MOUNTED HIGH TO CEILING AND ON WALL.
- 5/8" FIRE RATED PLYWOOD PAINTED TO MATCH WALL. PROVIDE 96" TALL TO FULL WIDTH OF WALL SHEET.
- PROVIDE A FUSED, HEAVY DUTY, LOCKABLE DISCONNECT POWER MODULE EQUAL TO BUSSMANN PS-1T48-R2-G-A WITH CLASS J FUSES. FIRE ALARM SYSTEM INTERFACE, GREEN PILOT LIGHT AND ALL NECESSARY INTERLOCKING CONTACTS. PROVIDE FINAL ELECTRICAL CONNECTION TO ELEVATOR CONTROLLER. COORDINATE EXACT REQUIREMENTS WITH ELEVATOR MANUFACTURER.
- PROVIDE 20A, 120V, SINGLE POLE FUSED DISCONNECT SWITCH FOR ELEVATOR CAB LIGHTS. MOUNT AT +6'-0" A.F.F. PROVIDE FINAL ELECTRICAL CONNECTION TO ELEVATOR CONTROLLER. COORDINATE EXACT REQUIREMENTS WITH ELEVATOR MANUFACTURER. SWITCH SHALL BE CAPABLE OF BEING LOOKED "OFF".
- ROUTE CIRCUIT FOR GARBAGE DISPOSAL OUTLET THROUGH TOGGLE SWITCH.
- COORDINATE RECEPTACLE WITH CASEWORK.
- 4" EMPTY CONDUIT STUBED UP AT 3" A.F.F. AND CAPPED WITH PULL STRINGS. ROUTED FROM FLOOR BELOW.
- (2) 4" EMPTY CONDUITS STUBED UP AT 3" A.F.F. AND CAPPED WITH PULL STRINGS. ROUTED FROM EXTERIOR BUILDING AND TERMINATED IN GRADE JUNCTION BOX. COORDINATE EXACT LOCATION WITH TELECOMMUNICATION PROVIDER.
- 4" EMPTY CONDUIT WITH PULL STRINGS ROUTED TO IT ROOM ON FLOOR ABOVE. PROVIDE FIRE RATED PENETRATION THRU FIRE WALL.
- ROUTE (2) 4" EMPTY CONDUIT TO ABOVE CEILING ON FIRST FLOOR BELOW AND PROVIDE FIRE RATED PENETRATION THRU FIRE WALL. CONDUIT TO STUB OUT WALL TO CABLE TRAY ABOVE CEILING ON FIRST FLOOR.
- WIRE MESH CABLE TRAY ABOVE CEILING ON FIRST FLOOR BELOW. REFER TO FIRST FLOOR SYSTEM PLAN FOR CONTINUATION.
- COORDINATE MICROWAVE RECEPTACLE MOUNTING HEIGHT WITH CASEWORK.
- VERTICAL LADDER TRAY FROM FLOOR TO 96".
- 4" EMPTY CONDUIT WITH PULL STRINGS ROUTED FROM ELECTRICAL ROOM ON FIRST FLOOR. PROVIDE FIRE RATED PENETRATION THRU FIRE WALL.
- 4" CONDUIT ROUTED BELOW GRADE FROM ELECTRICAL ROOM AND TERMINATED IN JUNCTION BOX FOR FUTURE TERMINAL BUILDING COMMUNICATION CABLEING. PROVIDE EMPTY CONDUIT WITH PULL STRINGS.
- PROVIDE DUCT MOUNTED SMOKE DETECTOR IN RETURN AIR DUCT.
- ROUTE (1) 1" EMPTY CONDUIT WITH PULL STRINGS TO ROOF FOR COAX CABLEING TO ANTENNA. PROVIDE COAX OUTLET WHERE SHOWN. COORDINATE EXACT LOCATION AND REQUIREMENTS WITH OWNER.



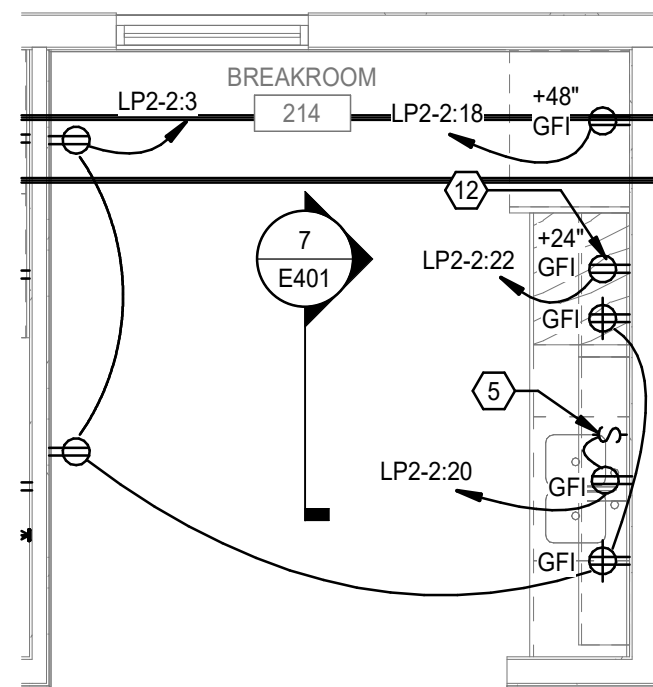
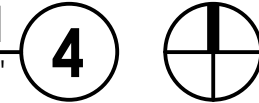
ENLARGED ELECTRICAL ROOM PLAN

1/4" = 1'-0"



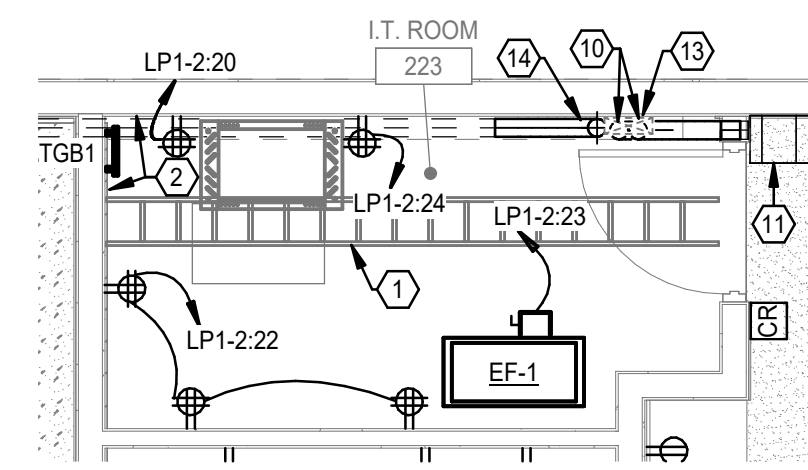
ENLARGED 2ND FLOOR PLAN

1/4" = 1'-0"



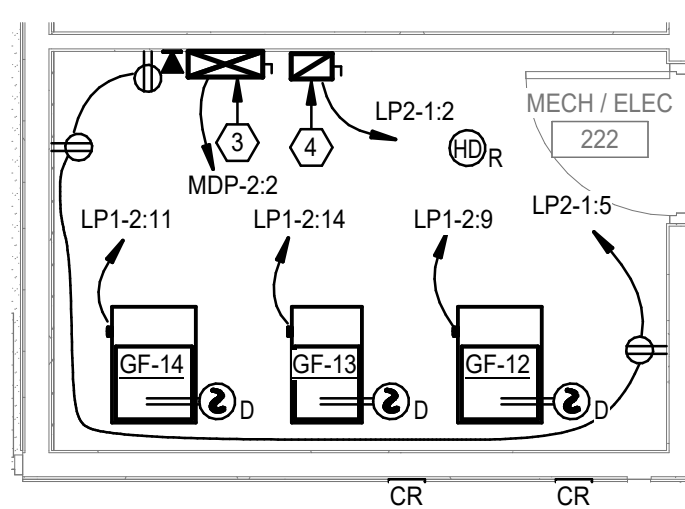
ENLARGED 2ND FLOOR BREAK ROOM

1/4" = 1'-0"



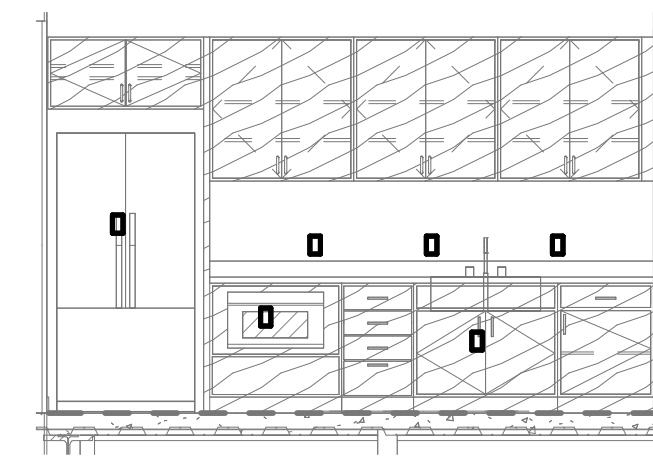
ENLARGED 2ND FLOOR IT ROOM

1/4" = 1'-0"



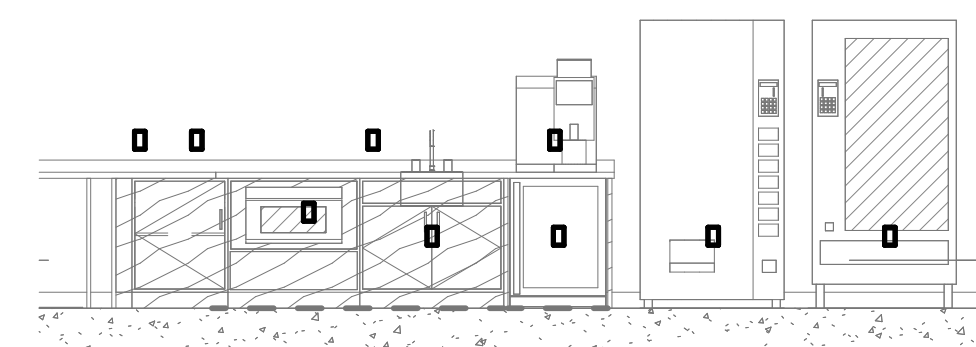
ENLARGED 2ND FLOOR MECH ROOM

1/4" = 1'-0"



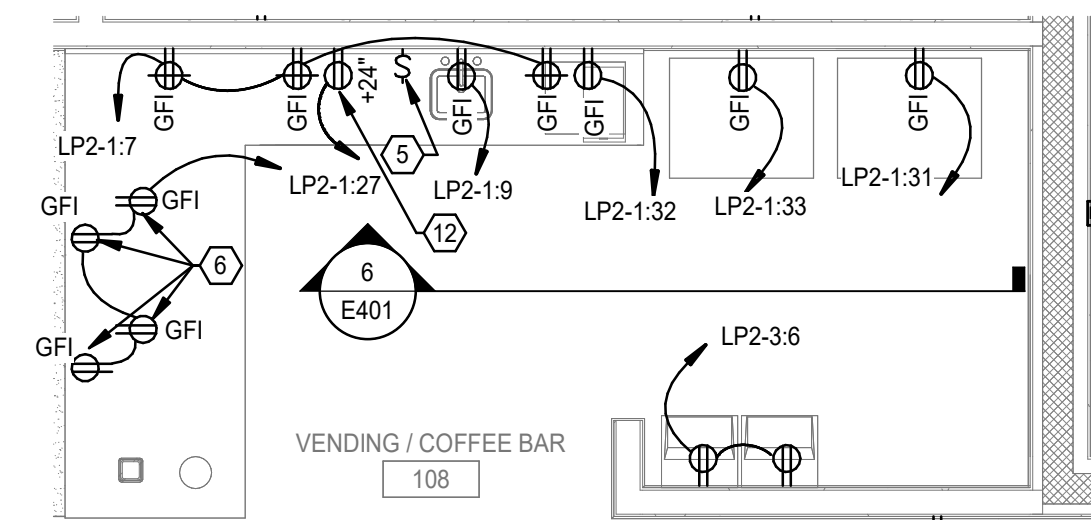
BREAK ROOM SECTION

NOT TO SCALE



COFFEE BAR SECTION

NOT TO SCALE



ENLARGED 1ST FLOOR BREAK ROOM

1/4" = 1'-0"

