



MiTek, Inc.
16023 Swingley Ridge Rd.
Chesterfield, MO 63017
314.434.1200

Re: 240456M-1-R
Lot 81 Summit View Farms

The truss drawing(s) referenced below have been prepared by MiTek USA, Inc. under my direct supervision based on the parameters provided by Mid West Lumber & Supply.

Pages or sheets covered by this seal: I67897022 thru I67897022

My license renewal date for the state of Missouri is December 31, 2025.

Missouri COA: Engineering 001193



August 30, 2024

Sevier, Scott, Engineer

IMPORTANT NOTE: The seal on these truss component designs is a certification that the engineer named is licensed in the jurisdiction(s) identified and that the designs comply with ANSI/TPI 1. These designs are based upon parameters shown (e.g., loads, supports, dimensions, shapes and design codes), which were given to MiTek or TRENCO. Any project specific information included is for MiTek's or TRENCO's customers file reference purpose only, and was not taken into account in the preparation of these designs. MiTek or TRENCO has not independently verified the applicability of the design parameters or the designs for any particular building. Before use, the building designer should verify applicability of design parameters and properly incorporate these designs into the overall building design per ANSI/TPI 1, Chapter 2.

RELEASE FOR CONSTRUCTION
AS NOTED ON PLANS REVIEW
DEVELOPMENT SERVICES
LEE'S SUMMIT, MISSOURI
12/03/2024 11:25:58

Job	Truss	Truss Type	Qty	Ply	Lot 81 Summit View Farms	167897022
240456M-1-R	H1	HIP GIRDER	1	3	Job Reference (optional)	

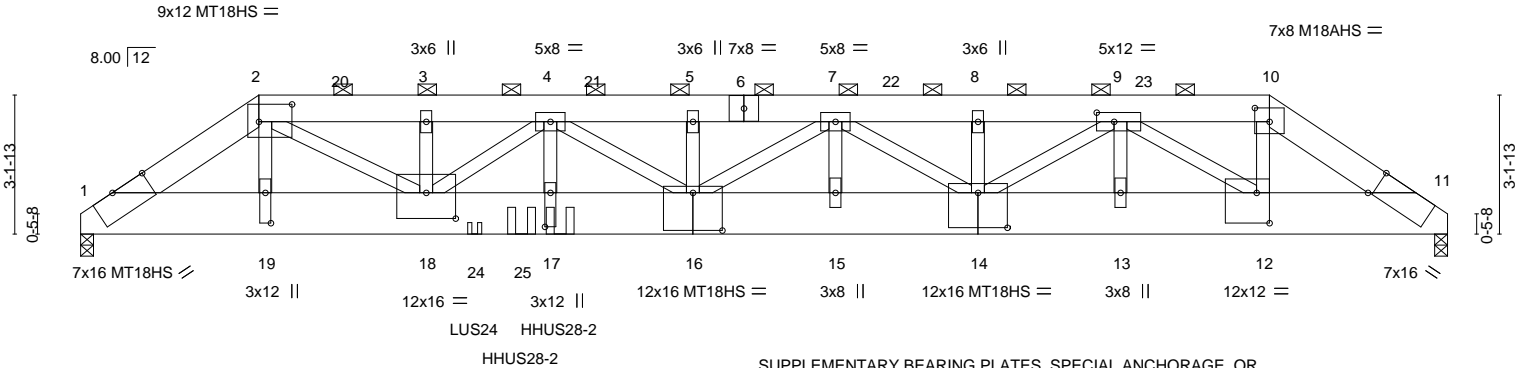
Mid West Lumber, Urich, MO - 64788,

8.730 s Aug 15 2024 MiTek Industries, Inc. Thu Aug 29 11:59:45 2024 Page 1

ID:nElIlgN08zbjFmRamELQF3YynlSC-kPjxwBUMfQLYu8ziMuOHuZPte8ygCk7ulq72gAyl?3y

0-11-0	4-0-8	7-5-1	10-7-13	13-10-10	17-1-7	20-4-3	23-7-0	26-11-8	31-0-0
0-11-0	4-0-8	3-4-9	3-2-13	3-2-13	3-2-13	3-2-13	3-2-13	3-4-9	4-0-8

Scale = 1:52.3



4-0-8	7-5-1	10-7-13	13-10-10	17-1-7	20-4-3	23-7-0	26-11-8	31-0-0
4-0-8	3-4-9	3-2-13	3-2-13	3-2-13	3-2-13	3-2-13	3-4-9	4-0-8
Plate Offsets (X,Y)-- [1:0-9-11,Edge], [2:0-9-0,0-4-12], [9:0-4-12,0-2-8], [10:0-4-0,0-3-12], [11:0-1-3,Edge], [12:0-3-8,0-8-4], [14:0-8-0,0-9-8], [16:0-8-0,0-10-4], [17:0-9-4,0-1-8], [18:0-8-0,0-7-0], [19:0-8-4,0-1-8]								

LOADING (psf)	SPACING-	CSI.	DEFL.	in	(loc)	l/defl	L/d	PLATES	GRIP
TCLL (roof) 25.0	2-0-0	TC 0.60	Vert(LL) -0.42	16	>868	240		MT20	244/190
Snow (Pi/Pg) 19.3/25.0	Plate Grip DOL 1.15	BC 0.72	Vert(CT) -0.75	16	>490	180		M18AHS	186/179
TCDL 10.0	Lumber DOL 1.15	WB 0.59	Horz(CT) 0.12	11	n/a	n/a		MT18HS	244/190
BCLL 0.0 *	Rep Stress Incr NO	Matrix-S						Weight: 892 lb	FT = 20%
BCDL 10.0	Code IRC2018/TPI2014								

LUMBER-	BRACING-
TOP CHORD 2x8 SP 2400F 2.0E	TOP CHORD Structural wood sheathing directly applied or 6-0-0 oc purlins, except
BOT CHORD 2x12 SP 2400F 2.0E	2-0-0 oc purlins (5-7-3 max.): 2-10.
WEBS 2x4 SP No.1 *Except*	BOT CHORD Rigid ceiling directly applied or 10-0-0 oc bracing.
2-18: 2x4 SP 2400F 2.0E	

REACTIONS. (size) 1=0-3-8 (req. 0-4-8), 11=0-3-8
Max Horz 1=54(LC 9)
Max Uplift 1=2348(LC 10), 11=1688(LC 10)
Max Grav 1=16340(LC 2), 11=11970(LC 2)

FORCES. (lb) - Max. Comp./Max. Ten. - All forces 250 (lb) or less except when shown.
TOP CHORD 1-2=-29814/4298, 2-3=-42647/6137, 3-4=-42640/6136, 4-5=-48374/6821, 5-7=-48374/6821, 7-8=-37581/5321, 8-9=-37581/5321, 9-10=-18548/2651, 10-11=-20929/2954
BOT CHORD 1-19=-3640/25527, 18-19=-3672/25751, 17-18=-6952/49661, 16-17=-6952/49661, 15-16=-6253/44736, 14-15=-6253/44736, 13-14=-4049/29004, 12-13=-4049/29004, 11-12=-2490/17928
WEBS 2-19=-509/3628, 2-18=-2809/19898, 3-18=-143/929, 4-18=-9213/1169, 4-17=-784/6336, 4-16=-2613/2916, 7-16=-969/4541, 7-15=-260/2059, 7-14=-8906/1252, 9-14=-1485/10676, 9-13=-193/1628, 9-12=-13018/1841, 10-12=-1372/9961

- NOTES-
- 3-ply truss to be connected together with 10d (0.131"x3") nails as follows:
Top chords connected as follows: 2x8 - 2 rows staggered at 0-7-0 oc.
Bottom chords connected as follows: 2x12 - 4 rows staggered at 0-4-0 oc.
Webs connected as follows: 2x4 - 1 row at 0-9-0 oc.
 - All loads are considered equally applied to all plies, except if noted as front (F) or back (B) face in the LOAD CASE(S) section. Ply to ply connections have been provided to distribute only loads noted as (F) or (B), unless otherwise indicated.
 - Unbalanced roof live loads have been considered for this design.
 - Wind: ASCE 7-16; Vult=115mph (3-second gust) Vasd=91mph; TCDL=6.0psf; BCDL=6.0psf; h=25ft; B=45ft; L=31ft; eave=4ft; Cat. II; Exp C; Enclosed; MWFRS (directional); cantilever left and right exposed; end vertical left and right exposed; Lumber DOL=1.60 plate grip DOL=1.60
 - TCLL: ASCE 7-16; Pr=25.0 psf (roof LL: Lum DOL=1.15 Plate DOL=1.15); Pg=25.0 psf; Pf=19.3 psf (Lum DOL=1.15 Plate DOL=1.15); Is=1.0; Rough Cat C; Partially Exp.; Ce=1.0; Cs=1.00; Ct=1.10, Lu=50-0-0
 - This truss has been designed for greater of min roof live load of 12.0 psf or 1.00 times flat roof load of 19.3 psf on overhangs non-concurrent with other live loads.
 - Provide adequate drainage to prevent water ponding.
 - All plates are MT20 plates unless otherwise indicated.
 - This truss has been designed for a 10.0 psf bottom chord live load nonconcurrent with any other live loads.

Continued on page 2



August 30, 2024

WARNING - Verify design parameters and READ NOTES ON THIS AND INCLUDED MITEK REFERENCE PAGE MII-7473 rev. 1/2/2023 BEFORE USE.

Design valid for use only with MiTek® connectors. This design is based only upon parameters shown, and is for an individual building component, not a truss system. Before use, the building designer must verify the applicability of design parameters and properly incorporate this design into the overall building design. Bracing indicated is to prevent buckling of individual truss web and/or chord members only. Additional temporary and permanent bracing is always required for stability and to prevent collapse with possible personal injury and property damage. For general guidance regarding the fabrication, storage, delivery, erection and bracing of trusses and truss systems, see **ANSI/TPI1 Quality Criteria, and DSB-22** available from Truss Plate Institute (www.tpinst.org) and **BCSI Building Component Safety Information** available from the Structural Building Component Association (www.sbcsccomponents.com)

MiTek®
RELEASE FOR CONSTRUCTION
AS NOTED ON PLANS REVIEW
DEVELOPMENT SERVICES
LEE'S SUMMIT, MISSOURI
12/03/2024 11:25:58

Job	Truss	Truss Type	Qty	Ply	Lot 81 Summit View Farms
240456M-1-R	H1	HIP GIRDER	1	3	167897022
					Job Reference (optional)

Mid West Lumber, Urich, MO - 64788,

8.730 s Aug 15 2024 MiTek Industries, Inc. Thu Aug 29 11:59:45 2024 Page 2
ID:nElIgN08zbjFmRamELQF3YynISC-kPjxwBUMfQLYu8ziMuOHuZPte8ygCk7ulq72gAyi?3y

NOTES-

- 10) * This truss has been designed for a live load of 20.0psf on the bottom chord in all areas where a rectangle 3-6-0 tall by 2-0-0 wide will fit between the bottom chord and any other members.
- 11) WARNING: Required bearing size at joint(s) 1 greater than input bearing size.
- 12) Provide mechanical connection (by others) of truss to bearing plate capable of withstanding 100 lb uplift at joint(s) except (jt=lb) 1=2348, 11=1688.
- 13) This truss is designed in accordance with the 2018 International Residential Code sections R502.11.1 and R802.10.2 and referenced standard ANSI/TPI 1.
- 14) Graphical purlin representation does not depict the size or the orientation of the purlin along the top and/or bottom chord.
- 15) Use Simpson Strong-Tie LUS24 (4-10d Girder, 2-10d Truss) or equivalent at 8-11-4 from the left end to connect truss(es) to front face of bottom chord.
- 16) Use Simpson Strong-Tie HHUS28-2 (22-10d Girder, 8-10d Truss, Single Ply Girder) or equivalent at 10-10-8 from the left end to connect truss(es) to front face of bottom chord.
- 17) Use Simpson Strong-Tie HHUS28-2 (22-10d Girder, 8-10d Truss, Single Ply Girder) or equivalent at 10-0-0 from the left end to connect truss(es) to back face of bottom chord.
- 18) Fill all nail holes where hanger is in contact with lumber.
- 19) Hanger(s) or other connection device(s) shall be provided sufficient to support concentrated load(s) 4692 lb down and 845 lb up at 7-10-0 on bottom chord. The design/selection of such connection device(s) is the responsibility of others.

LOAD CASE(S) Standard

- 1) Dead + Snow (balanced): Lumber Increase=1.15, Plate Increase=1.15
- Uniform Loads (plf)
- Vert: 1-2=-59, 2-10=-59, 10-11=-58, 1-11=-440(F=-210, B=-210)
- Concentrated Loads (lb)
- Vert: 18=-4692 17=-2667(F) 24=-523(F) 25=-2857(B)

 **WARNING - Verify design parameters and READ NOTES ON THIS AND INCLUDED MITEK REFERENCE PAGE MII-7473 rev. 1/2/2023 BEFORE USE.**

Design valid for use only with MiTek® connectors. This design is based only upon parameters shown, and is for an individual building component, not a truss system. Before use, the building designer must verify the applicability of design parameters and properly incorporate this design into the overall building design. Bracing indicated is to prevent buckling of individual truss web and/or chord members only. Additional temporary and permanent bracing is always required for stability and to prevent collapse with possible personal injury and property damage. For general guidance regarding the fabrication, storage, delivery, erection and bracing of trusses and truss systems, see **ANSI/TPI1 Quality Criteria, and DSB-22** available from Truss Plate Institute (www.tpinst.org) and **BCSI Building Component Safety Information** available from the Structural Building Component Association (www.sbcsccomponents.com)

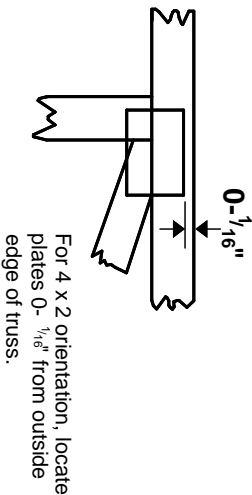
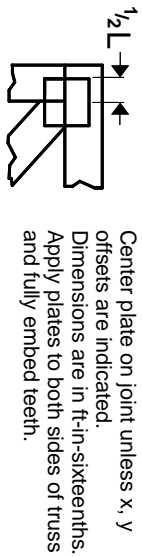


RELEASE FOR CONSTRUCTION
AS NOTED ON PLANS REVIEW
DEVELOPMENT SERVICES
LEE'S SUMMIT, MISSOURI
12/03/2024 11:25:58

16023 Swingley Ridge Rd
Potosi, MO 63003
816-404-0200 / MiTek-USA.com

Symbols

PLATE LOCATION AND ORIENTATION



For 4 x 2 orientation, locate plates 0- 1/16" from outside edge of truss.

This symbol indicates the required direction of slots in connector plates.

PLATE SIZE

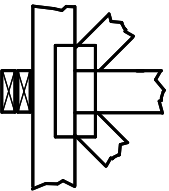
The first dimension is the plate width measured perpendicular to slots. Second dimension is the length parallel to slots.

LATERAL BRACING LOCATION



Indicated by symbol shown and/or by text in the bracing section of the output. Use T or I bracing if indicated.

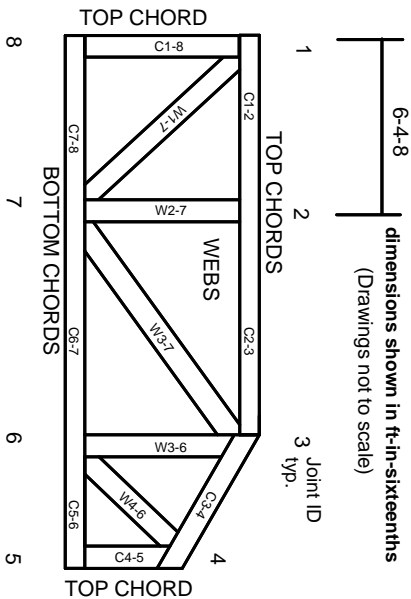
BEARING



Indicates location where bearings (supports) occur. Icons vary but reaction section indicates joint number/letter where bearings occur. Min size shown is for crushing only.

Industry Standards:
ANSI/TP1: National Design Specification for Metal Plate Connected Wood Truss Construction.
DSB-22: Design Standard for Bracing.
BCSI: Building Component Safety Information, Guide to Good Practice for Handling, Installing, Restraining & Bracing of Metal Plate Connected Wood Trusses.

Numbering System



JOINTS ARE GENERALLY NUMBERED/LETTERED CLOCKWISE AROUND THE TRUSS STARTING AT THE JOINT FARTHEST TO THE LEFT.

CHORDS AND WEBS ARE IDENTIFIED BY END JOINT NUMBERS/LETTERS.

Product Code Approvals

ICC-ES Reports:
ESR-1988, ESR-2362, ESR-2685, ESR-3282
ESR-4722, ESL-1388

Design General Notes

Trusses are designed for wind loads in the plane of the truss unless otherwise shown.
Lumber design values are in accordance with ANSI/TP1 1 section 6.3. These truss designs rely on lumber values established by others.

© 2023 MITek® All Rights Reserved

MITek®

MITek Engineering Reference Sheet: MII-7473 rev. 1/2/2023



General Safety Notes

Failure to Follow Could Cause Property Damage or Personal Injury

1. Additional stability bracing for truss system, e.g. diagonal or X-bracing, is always required. See BCSI.
2. Truss bracing must be designed by an engineer. For wide truss spacing, individual lateral braces themselves may require bracing, or alternative Tor I bracing should be considered.
3. Never exceed the design loading shown and never stack materials on inadequately braced trusses.
4. Provide copies of this truss design to the building designer, erection supervisor, property owner and all other interested parties.
5. Cut members to bear tightly against each other.
6. Place plates on each face of truss at each joint and embed fully. Knots and wane at joint locations are regulated by ANSI/TP1 1.
7. Design assumes trusses will be suitably protected from the environment in accord with ANSI/TP1 1.
8. Unless otherwise noted, moisture content of lumber shall not exceed 19% at time of fabrication.
9. Unless expressly noted, this design is not applicable for use with fire retardant, preservative treated, or green lumber.
10. Camber is a non-structural consideration and is the responsibility of truss fabricator. General practice is to camber for dead load deflection.
11. Plate type, size, orientation and location dimensions indicated are minimum plating requirements.
12. Lumber used shall be of the species and size, and in all respects, equal to or better than that specified.
13. Top chords must be sheathed or purlins provided at spacing indicated on design.
14. Bottom chords require lateral bracing at 10 ft. spacing, or less, if no ceiling is installed, unless otherwise noted.
15. Connections not shown are the responsibility of others.
16. Do not cut or alter truss member or plate without prior approval of an engineer.
17. Install and load vertically unless indicated otherwise.
18. Use of green or treated lumber may pose unacceptable environmental, health or performance risks. Consult with project engineer before use.
19. Review all portions of this design (front, back, words and pictures) before use. Reviewing pictures alone is not sufficient.
20. Design assumes manufacture in accordance with ANSI/TP1 1 Quality Criteria.
21. The design does not take into account any dynamic or other loads other than those expressly stated.

RELEASE FOR CONSTRUCTION
AS NOTED ON PLANS REVIEW
DEVELOPMENT SERVICES
LEE'S SUMMIT, MISSOURI
12/03/2024 11:25:58