

CODE INFORMATION

FACILITY NAME: EASTSIDE DEVELOPMENT

ADDRESS: NE HAGAN RD LEE'S SUMMIT MISSOURI
OWNER: THE CITY OF LEE'S SUMMIT

PROJECT SCOPE
NEW APPROXIMATELY 40,000 SF FOOTPRINT, WITH 30,000 SF FOR AIRPLANE STORAGE AS FBO SERVICE., 10,000 SF FOR LSR7 SCHOOL DISTRICT, 8,700 FOR FBO TERMINAL, AND 2,400 SF FOR GSE EQUIPMENT STORAGE.

- ADOPTED CODES
- 2018 INTERNATIONAL BUILDING CODE
 - 2018 INTERNATIONAL MECHANICAL CODE
 - 2018 INTERNATIONAL PLUMBING CODE
 - 2017 NATIONAL ELECTRICAL CODE
 - 2018 INTERNATIONAL FIRE CODE
 - 2018 INTERNATIONAL ENERGY CODE
 - 2021 LIFE NFPA SAFETY CODE
 - ICC/ANSI A117.1-2009
 - NFPA 409 (2016 BY REFERENCE BUT BY ACCEPTANCE NEWER 2022 VERSION IS BASIS OF DESIGN)
 - ORDINANCES OF THE UNITED GOVERNMENT OF LEE'S SUMMIT, MISSOURI
 - NFPA 72 (2016)

FACILITY NAME: EASTSIDE DEVELOPMENT

ADDRESS: NE HAGAN RD LEE'S SUMMIT MISSOURI
OWNER: THE CITY OF LEE'S SUMMIT

PROJECT SCOPE
NEW APPROXIMATELY 40,000 SF FOOTPRINT, WITH 30,000 SF FOR AIRPLANE STORAGE AS FBO SERVICE., 10,000 SF FOR LSR7 SCHOOL DISTRICT, 8,700 FOR FBO TERMINAL, AND 2,400 SF FOR GSE EQUIPMENT STORAGE.

NFPA 409 FOR THE STORAGE OF AIRCRAFT
SECTION 6.1.2 GROUP II AIRCRAFT HANGAR: HANGAR SHALL HAVE AN AIRCRAFT ACCESS DOOR HEIGHT OF 28 FT MAXIMUM AND A SINGLE FIRE AREA OF MAXIMUM 40,000 SQFT FOR TYPE II CONSTRUCTION PER TABLE 6.1.2.
THE PROTECTION REQUIREMENTS IN 9.1.1 SHALL BE PERMITTED TO BE MODIFIED WITHIN THE AIRCRAFT STORAGE AND SERVICE AREA WHERE A RISK ASSESSMENT, AS OUTLINED IN SECTION 4.2 FIRE RISK ASSESSMENT IS SUBMITTED AND APPROVED BY THE AUTHORITY HAVING JURISDICTION.

LEE'S SUMMIT MUNICIPAL AIRPORT
LTX HANGER

CONSTRUCTION OF GROUP I AND GROUP II AIRCRAFT HANGARS CHAPTER 7
SECTION 7.3.3 PARTITIONS AND CEILINGS SEPARATING AIRCRAFT STORAGE AND SERVICING AREAS FROM ALL OTHER AREAS, SHOPS, OFFICES, AND PARTS STORAGE AREAS SHALL HAVE AT LEAST A 1-HOUR FIRE RESISTANCE RATING WITH OPENINGS PROTECTED BY LISTED FIRE DOORS OR SHUTTERS HAVING A MINIMUM FIRE RESISTANCE RATING OF 45 MINUTES.

SECTION 7.7.3.2 THE USE OF NOZZLES OR OPEN-HEAD SPRINKLERS WITH ANY NOMINAL K-FACTOR FOR COLUMN PROTECTION SHALL BE PERMITTED

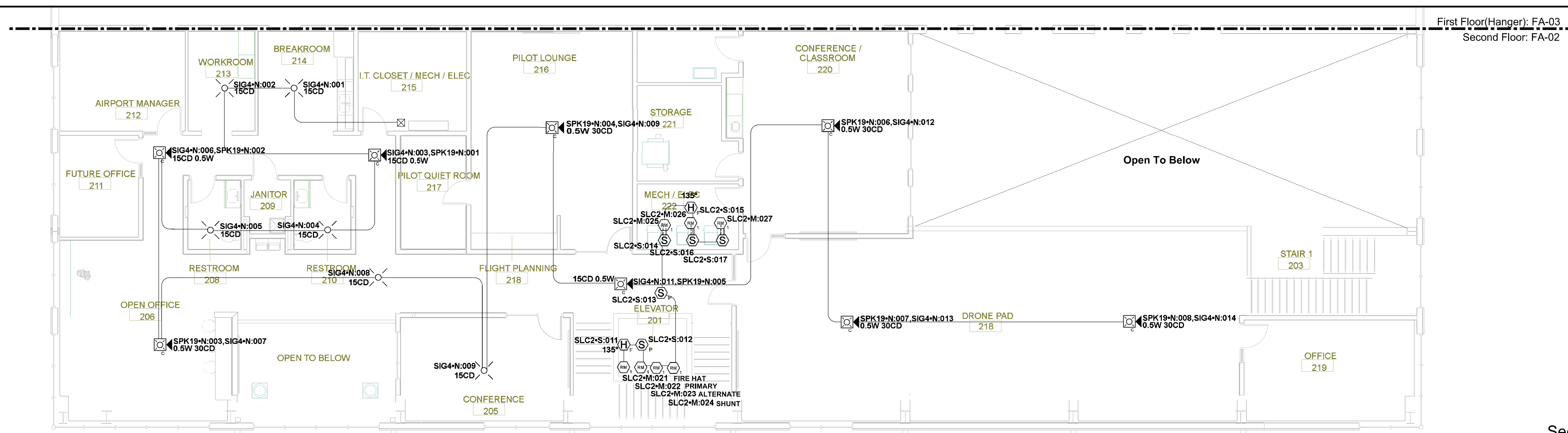
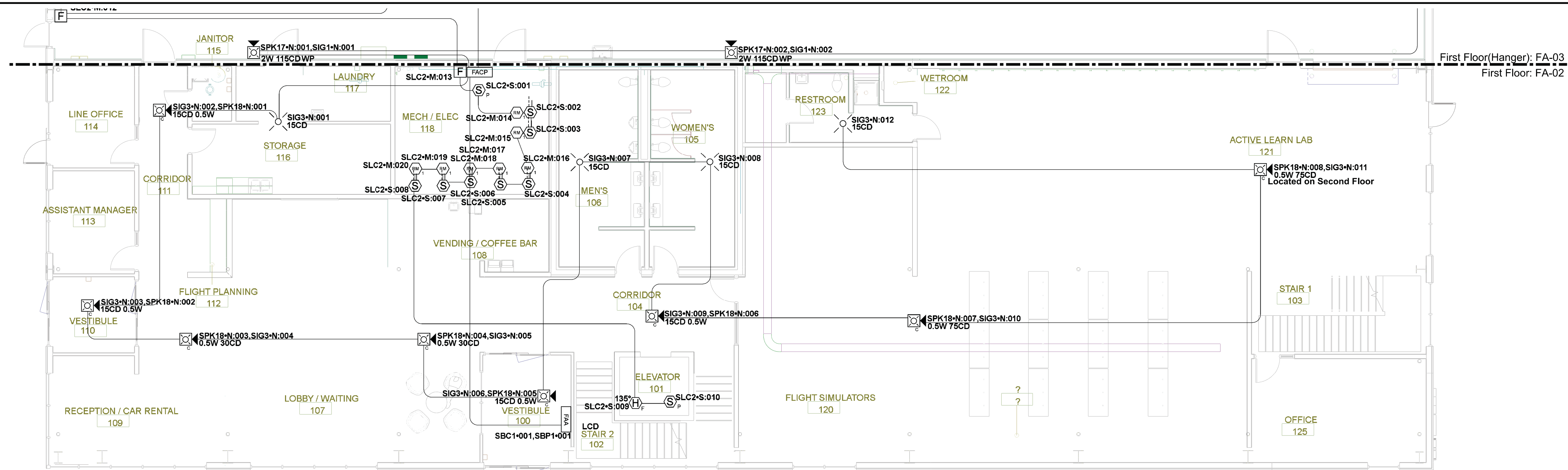
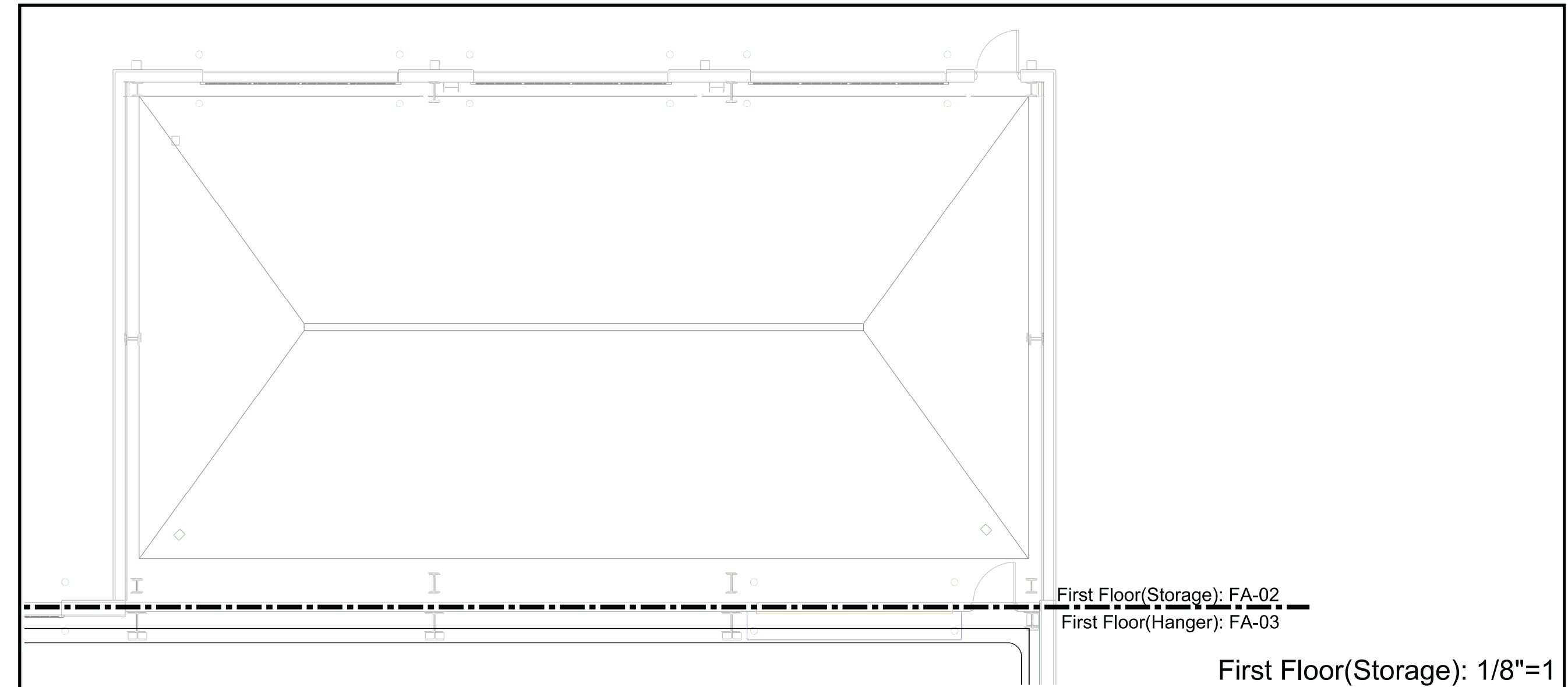
FACILITY NAME: EASTSIDE DEVELOPMENT

ADDRESS: NE HAGAN RD LEE'S SUMMIT MISSOURI
OWNER: THE CITY OF LEE'S SUMMIT

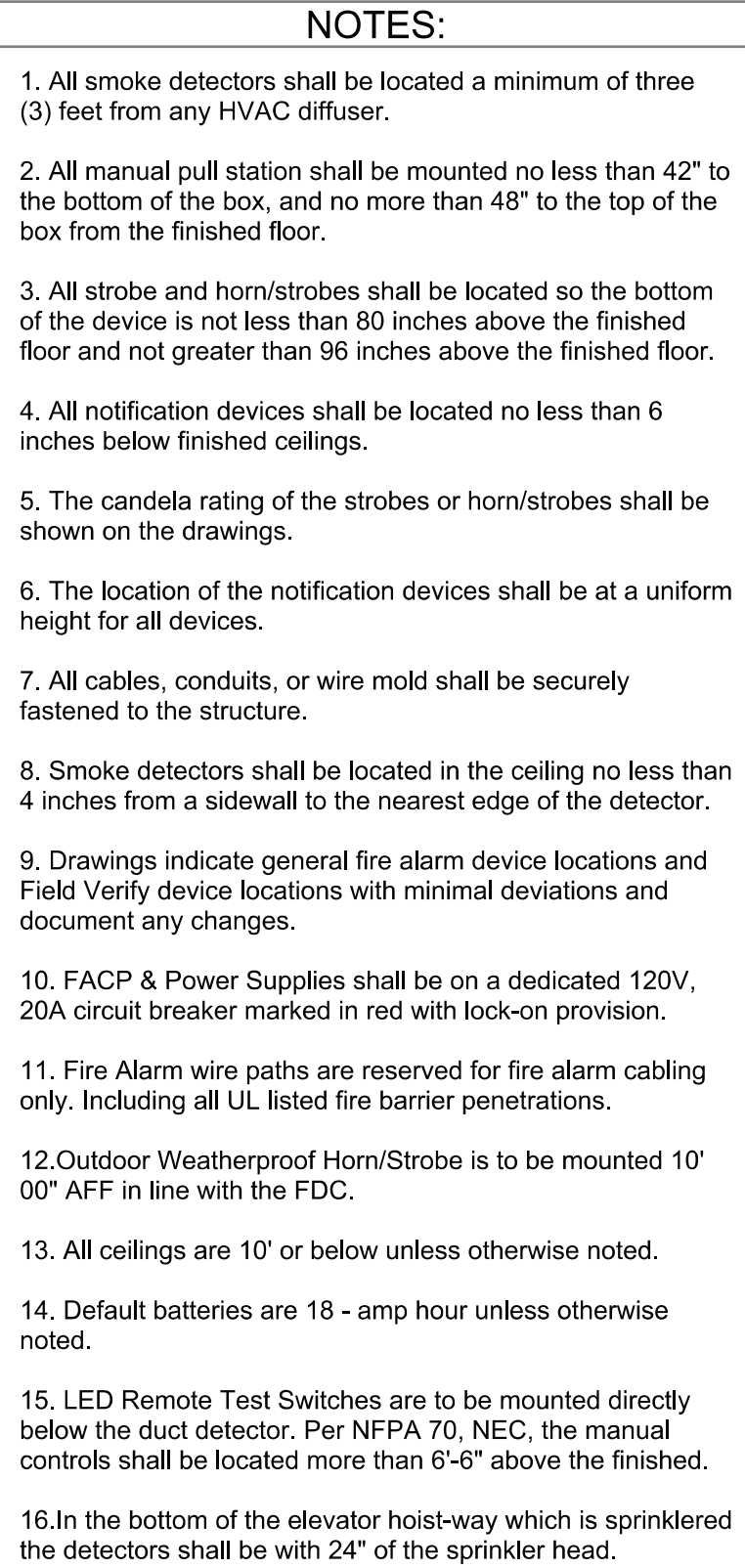
PROJECT SCOPE
NEW APPROXIMATELY 40,000 SF FOOTPRINT, WITH 30,000 SF FOR AIRPLANE STORAGE AS FBO SERVICE., 10,000 SF FOR LSR7 SCHOOL DISTRICT, 8,700 FOR FBO TERMINAL, AND 2,400 SF FOR GSE EQUIPMENT STORAGE.

Battery and Circuit Calculations

| Battery Calculations for Panel FACP | | | | | | | | | |
|-------------------------------------|------|---|------------|----------|----------|-----------|--------------|---------------|-----------|
| Part No. | Qty. | Description | Unit | Distance | Current | Voltage | Initial Drop | Final Voltage | Notes |
| 4800EVS-400 | 1 | 110-PT ADDRESSABLE FACP, EMERGENCY VOICE SYSTEM | SK 6820EVS | | 2.000000 | 12.000000 | 0.000000 | 12.000000 | 200 Watts |
| 5860R | 1 | REMOTE LCD ANNUNCIATOR, RED | 5860R | | 0.000000 | 12.000000 | 0.000000 | 12.000000 | 100mA |
| 5860R | 1 | REMOTE LCD ANNUNCIATOR, RED | 5860R | | 0.000000 | 12.000000 | 0.000000 | 12.000000 | 100mA |
| 5860R | 1 | REMOTE LCD ANNUNCIATOR, RED | 5860R | | 0.000000 | 12.000000 | 0.000000 | 12.000000 | 100mA |
| 5860R | 1 | REMOTE LCD ANNUNCIATOR, RED | 5860R | | 0.000000 | 12.000000 | 0.000000 | 12.000000 | 100mA |
| 5860R | 1 | REMOTE LCD ANNUNCIATOR, RED | 5860R | | 0.000000 | 12.000000 | 0.000000 | 12.000000 | 100mA |
| 5860R | 1 | REMOTE LCD ANNUNCIATOR, RED | 5860R | | 0.000000 | 12.000000 | 0.000000 | 12.000000 | 100mA |
| 5860R | 1 | REMOTE LCD ANNUNCIATOR, RED | 5860R | | 0.000000 | 12.000000 | 0.000000 | 12.000000 | 100mA |
| 5860R | 1 | REMOTE LCD ANNUNCIATOR, RED | 5860R | | 0.000000 | 12.000000 | 0.000000 | 12.000000 | 100mA |
| 5860R | 1 | REMOTE LCD ANNUNCIATOR, RED | 5860R | | 0.000000 | 12.000000 | 0.000000 | 12.000000 | 100mA |
| 5860R | 1 | REMOTE LCD ANNUNCIATOR, RED | 5860R | | 0.000000 | 12.000000 | 0.000000 | 12.000000 | 100mA |
| 5860R | 1 | REMOTE LCD ANNUNCIATOR, RED | 5860R | | 0.000000 | 12.000000 | 0.000000 | 12.000000 | 100mA |
| 5860R | 1 | REMOTE LCD ANNUNCIATOR, RED | 5860R | | 0.000000 | 12.000000 | 0.000000 | 12.000000 | 100mA |
| 5860R | 1 | REMOTE LCD ANNUNCIATOR, RED | 5860R | | 0.000000 | 12.000000 | 0.000000 | 12.000000 | 100mA |
| 5860R | 1 | REMOTE LCD ANNUNCIATOR, RED | 5860R | | 0.000000 | 12.000000 | 0.000000 | 12.000000 | 100mA |
| 5860R | 1 | REMOTE LCD ANNUNCIATOR, RED | 5860R | | 0.000000 | 12.000000 | 0.000000 | 12.000000 | 100mA |
| 5860R | 1 | REMOTE LCD ANNUNCIATOR, RED | 5860R | | 0.000000 | 12.000000 | 0.000000 | 12.000000 | 100mA |
| 5860R | 1 | REMOTE LCD ANNUNCIATOR, RED | 5860R | | 0.000000 | 12.000000 | 0.000000 | 12.000000 | 100mA |
| 5860R | 1 | REMOTE LCD ANNUNCIATOR, RED | 5860R | | 0.000000 | 12.000000 | 0.000000 | 12.000000 | 100mA |
| 5860R | 1 | REMOTE LCD ANNUNCIATOR, RED | 5860R | | 0.000000 | 12.000000 | 0.000000 | 12.000000 | 100mA |
| 5860R | 1 | REMOTE LCD ANNUNCIATOR, RED | 5860R | | 0.000000 | 12.000000 | 0.000000 | 12.000000 | 100mA |
| 5860R | 1 | REMOTE LCD ANNUNCIATOR, RED | 5860R | | 0.000000 | 12.000000 | 0.000000 | 12.000000 | 100mA |
| 5860R | 1 | REMOTE LCD ANNUNCIATOR, RED | 5860R | | 0.000000 | 12.000000 | 0.000000 | 12.000000 | 100mA |
| 5860R | 1 | REMOTE LCD ANNUNCIATOR, RED | 5860R | | 0.000000 | 12.000000 | 0.000000 | 12.000000 | 100mA |
| 5860R | 1 | REMOTE LCD ANNUNCIATOR, RED | 5860R | | 0.000000 | 12.000000 | 0.000000 | 12.000000 | 100mA |
| 5860R | 1 | REMOTE LCD ANNUNCIATOR, RED | 5860R | | 0.000000 | 12.000000 | 0.000000 | 12.000000 | 100mA |
| 5860R | 1 | REMOTE LCD ANNUNCIATOR, RED | 5860R | | 0.000000 | 12.000000 | 0.000000 | 12.000000 | 100mA |
| 5860R | 1 | REMOTE LCD ANNUNCIATOR, RED | 5860R | | 0.000000 | 12.000000 | 0.000000 | 12.000000 | 100mA |
| 5860R | 1 | REMOTE LCD ANNUNCIATOR, RED | 5860R | | 0.000000 | 12.000000 | 0.000000 | 12.000000 | 100mA |
| 5860R | 1 | REMOTE LCD ANNUNCIATOR, RED | 5860R | | 0.000000 | 12.000000 | 0.000000 | 12.000000 | 100mA |
| 5860R | 1 | REMOTE LCD ANNUNCIATOR, RED | 5860R | | 0.000000 | 12.000000 | 0.000000 | 12.000000 | 100mA |
| 5860R | 1 | REMOTE LCD ANNUNCIATOR, RED | 5860R | | 0.000000 | 12.000000 | 0.000000 | 12.000000 | 100mA |
| 5860R | 1 | REMOTE LCD ANNUNCIATOR, RED | 5860R | | 0.000000 | 12.000000 | 0.000000 | 12.000000 | 100mA |
| 5860R | 1 | REMOTE LCD ANNUNCIATOR, RED | 5860R | | 0.000000 | 12.000000 | 0.000000 | 12.000000 | 100mA |
| 5860R | 1 | REMOTE LCD ANNUNCIATOR, RED | 5860R | | 0.000000 | 12.000000 | 0.000000 | 12.000000 | 100mA |
| 5860R | 1 | REMOTE LCD ANNUNCIATOR, RED | 5860R | | 0.000000 | 12.000000 | 0.000000 | 12.000000 | 100mA |
| 5860R | 1 | REMOTE LCD ANNUNCIATOR, RED | 5860R | | 0.000000 | 12.000000 | 0.000000 | 12.000000 | 100mA |
| 5860R | 1 | REMOTE LCD ANNUNCIATOR, RED | 5860R | | 0.000000 | 12.000000 | 0.000000 | 12.000000 | 100mA |
| 5860R | 1 | REMOTE LCD ANNUNCIATOR, RED | 5860R | | 0.000000 | 12.000000 | 0.000000 | 12.000000 | 100mA |
| 5860R | 1 | REMOTE LCD ANNUNCIATOR, RED | 5860R | | 0.000000 | 12.000000 | 0.000000 | 12.000000 | 100mA |
| 5860R | 1 | REMOTE LCD ANNUNCIATOR, RED | 5860R | | 0.000000 | 12.000000 | 0.000000 | 12.000000 | 100mA |
| 5860R | 1 | REMOTE LCD ANNUNCIATOR, RED | 5860R | | 0.000000 | 12.000000 | 0.000000 | 12.000000 | 100mA |
| 5860R | 1 | REMOTE LCD ANNUNCIATOR, RED | 5860R | | 0.000000 | 12.000000 | 0.000000 | 12.000000 | 100mA |
| 5860R | 1 | REMOTE LCD ANNUNCIATOR, RED | 5860R | | 0.000000 | 12.000000 | 0.000000 | 12.000000 | 100mA |
| 5860R | 1 | REMOTE LCD ANNUNCIATOR, RED | 5860R | | 0.000000 | 12.000000 | 0.000000 | 12.000000 | 100mA |
| 5860R | 1 | REMOTE LCD ANNUNCIATOR, RED | 5860R | | 0.000000 | 12.000000 | 0.000000 | 12.000000 | 100mA |
| 5860R | 1 | REMOTE LCD ANNUNCIATOR, RED | 5860R | | 0.000000 | 12.000000 | 0.000000 | 12.000000 | 100mA |
| 5860R | 1 | REMOTE LCD ANNUNCIATOR, RED | 5860R | | 0.000000 | 12.000000 | 0.000000 | 12.000000 | 100mA |
| 5860R | 1 | REMOTE LCD ANNUNCIATOR, RED | 5860R | | 0.000000 | 12.000000 | 0.000000 | 12.000000 | 100mA |
| 5860R | 1 | REMOTE LCD ANNUNCIATOR, RED | 5860R | | 0.000000 | 12.000000 | 0.000000 | 12.000000 | 100mA |
| 5860R | 1 | REMOTE LCD ANNUNCIATOR, RED | 5860R | | 0.000000 | 12.000000 | 0.000000 | 12.000000 | 100mA |
| 5860R | 1 | REMOTE LCD ANNUNCIATOR, RED | 5860R | | 0.000000 | 12.000000 | 0.000000 | 12.000000 | 100mA |
| 5860R | 1 | REMOTE LCD ANNUNCIATOR, RED | 5860R | | 0.000000 | 12.000000 | 0.000000 | 12.000000 | 100mA |
| 5860R | 1 | REMOTE LCD ANNUNCIATOR, RED | 5860R | | 0.000000 | 12.000000 | 0.000000 | 12.000000 | 100mA |
| 5860R | 1 | REMOTE LCD ANNUNCIATOR, RED | 5860R | | 0.000000 | 12.000000 | 0.000000 | 12.000000 | 100mA |
| 5860R | 1 | REMOTE LCD ANNUNCIATOR, RED | 5860R | | 0.000000 | 12.000000 | 0.000000 | 12.000000 | 100mA |
| 5860R | 1 | REMOTE LCD ANNUNCIATOR, RED | 5860R | | 0.000000 | 12.000000 | 0.000000 | 12.000000 | 100mA |
| 5860R | 1 | REMOTE LCD ANNUNCIATOR, RED | 5860R | | 0.000000 | 12.000000 | 0.000000 | 12.000000 | 100mA |
| 5860R | 1 | REMOTE LCD ANNUNCIATOR, RED | 5860R | | 0.000000 | 12.000000 | 0.000000 | 12.000000 | 100mA |
| 5860R | 1 | REMOTE LCD ANNUNCIATOR, RED | 5860R | | 0.000000 | 12.000000 | 0.000000 | 12.000000 | 100mA |
| 5860R | 1 | REMOTE LCD ANNUNCIATOR, RED | 5860R | | 0.000000 | 12.000000 | 0.000000 | 12.000000 | 100mA |
| 5860R | 1 | REMOTE LCD ANNUNCIATOR, RED | 5860R | | 0.000000 | 12.000000 | 0.000000 | 12.000000 | 100mA |
| 5860R | 1 | REMOTE LCD ANNUNCIATOR, RED | 5860R | | 0.000000 | 12.000000 | 0.000000 | 12.000000 | 100mA |
| 5860R | 1 | REMOTE LCD ANNUNCIATOR, RED | 5860R | | 0.000000 | 12.000000 | 0.000000 | 12.000000 | 100mA |
| 5860R | 1 | REMOTE LCD ANNUNCIATOR, RED | 5860R | | 0.000000 | 12.000000 | 0.000000 | 12.000000 | 100mA |
| 5860R | 1 | REMOTE LCD ANNUNCIATOR, RED | 5860R | | 0.000000 | 12.000000 | 0.000000 | 12.000000 | 100mA |
| 5860R | 1 | REMOTE LCD ANNUNCIATOR, RED | 5860R | | 0.000000 | 12.000000 | 0.000000 | 12.000000 | 100mA |
| 5860R | 1 | REMOTE LCD ANNUNCIATOR, RED | 5860R | | 0.000000 | 12.000000 | 0.000000 | 12.000000 | 100mA |
| 5860R | 1 | REMOTE LCD ANNUNCIATOR, RED | 5860R | | 0.000000 | 12.000000 | 0.000000 | 12.000000 | 100mA |
| 5860R | 1 | REMOTE LCD ANNUNCIATOR, RED | 5860R | | 0.000000 | 12.000000 | 0.000000 | 12.000000 | 100mA |
| 5860R | 1 | REMOTE LCD ANNUNCIATOR, RED | 5860R | | 0.000000 | 12.000000 | 0.000000 | 12.000000 | 100mA |
| 5860R | 1 | REMOTE LCD ANNUNCIATOR, RED | 5860R | | 0.000000 | 12.000000 | 0.000000 | 12.000000 | 100mA |
| 5860R | 1 | REMOTE LCD ANNUN | | | | | | | |

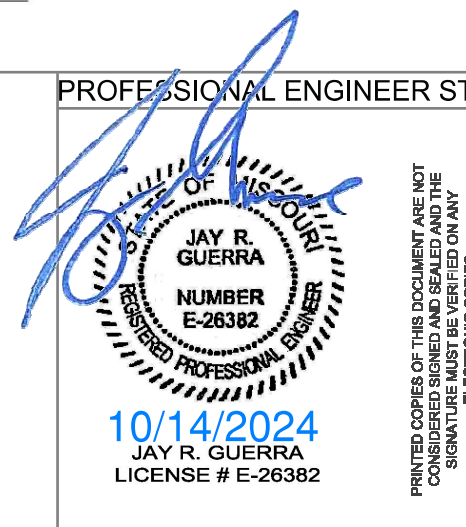


| | | |
|-------------------|--------------------|--------------|
| SCALE AT: | DATE: 10/9/2024 | DESIGNED BY: |
| PROJECT NO: 10159 | DRAWING NO: FA-02 | REVISION: |



GIBBENS DRAKE SCOTT, INC.
Missouri State Certificate of Authority #000816
9201 E. 63RD STREET, SUITE 100
RAYTOWN, MISSOURI 64133

PROFESSIONAL ENGINEER STAMP



| REVISIONS: | | DATE: |
|------------|--|-------|
| | | |
| | | |
| | | |
| | | |
| | | |

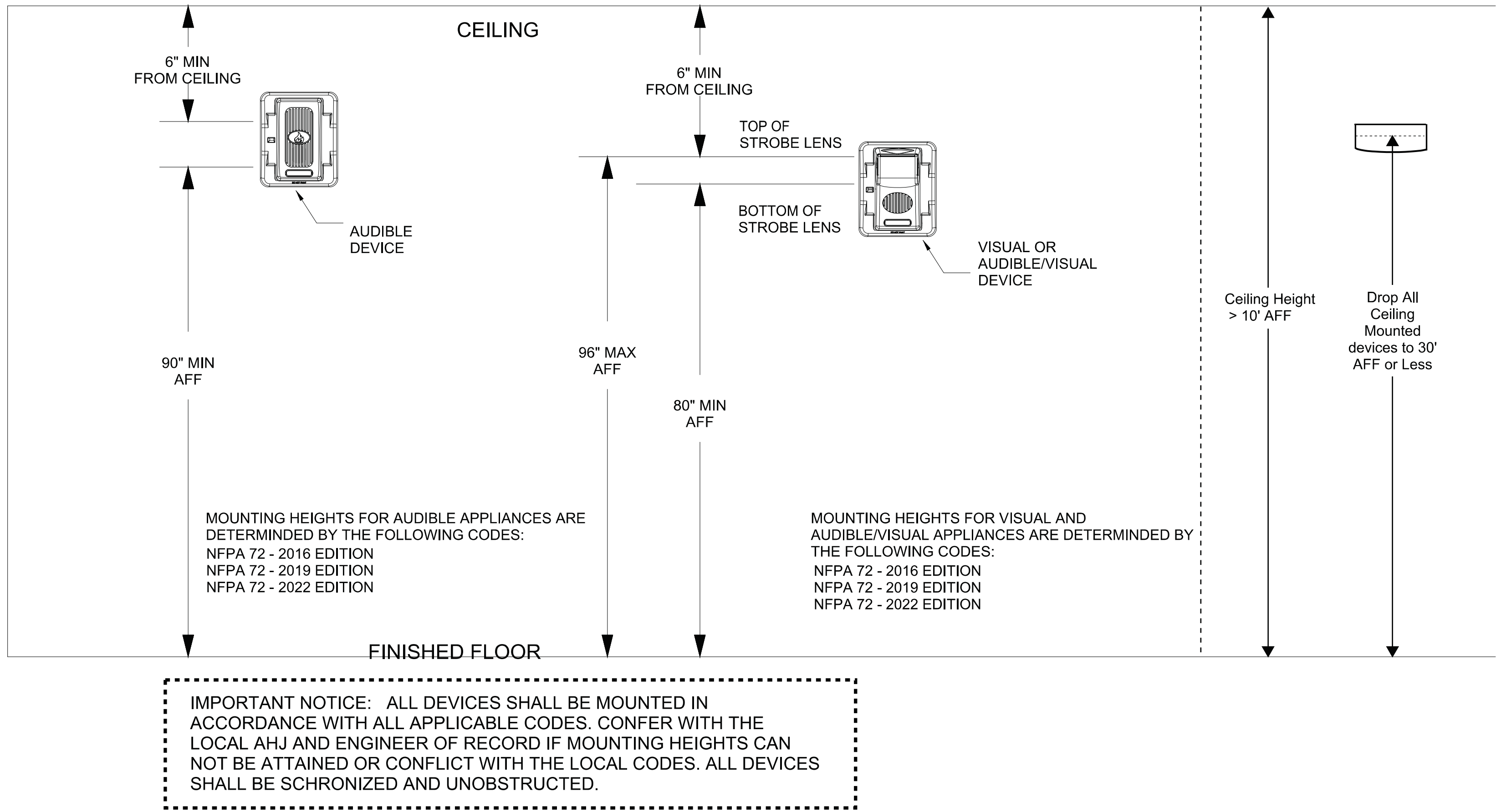
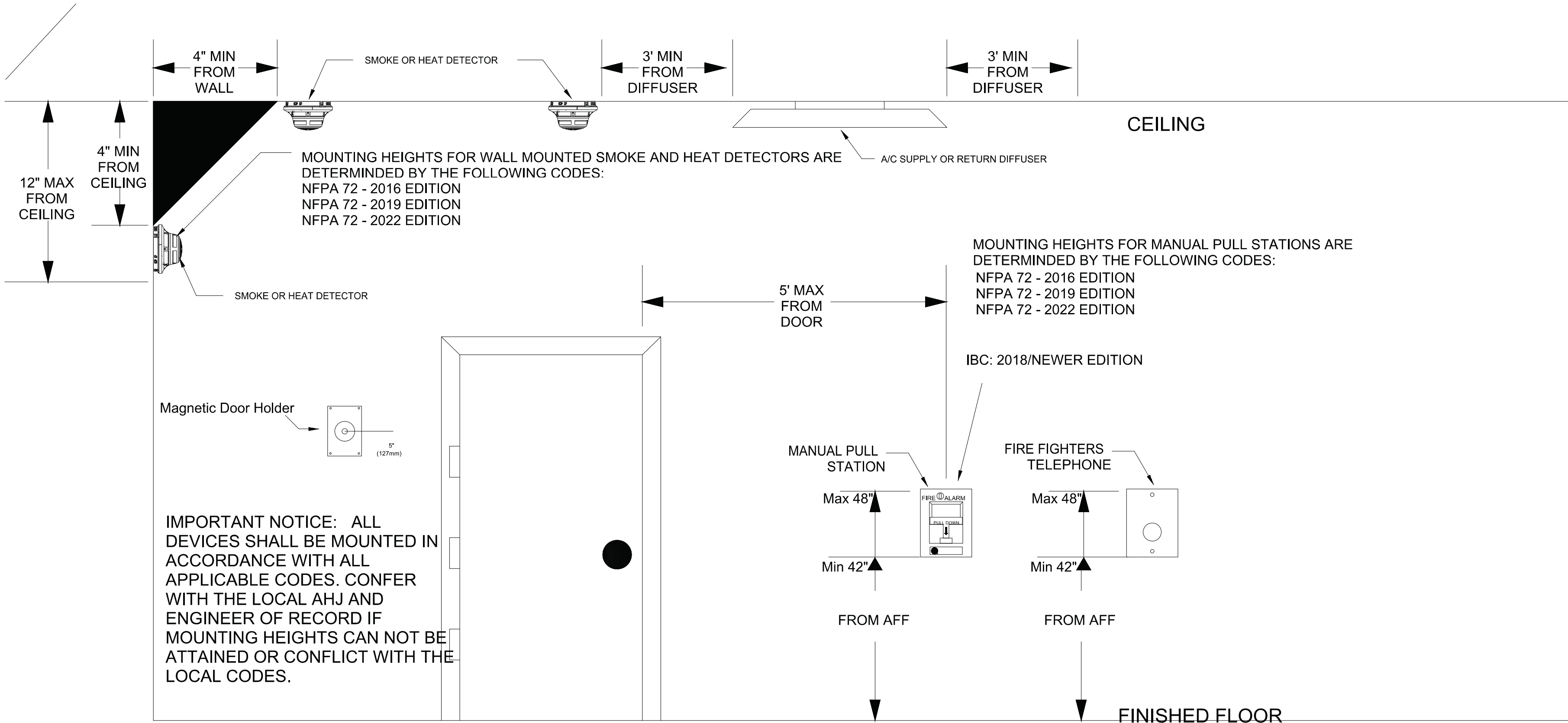


LTX HANGER

SITE: 604 W 47th St Kansas City, Missouri 64112

TITLE: Device Installation, NFPA 72 Reference

| | | |
|-------------------|--------------------|--------------|
| SCALE AT: | DATE: 10/9/2024 | DESIGNED BY: |
| PROJECT NO: 10159 | DRAWING NO: FA-03 | REVISION: |



DETECTOR LOCATION REQUIREMENTS FOR WALL SECTIONS
NFPA 72

| DEPTH OF WALL SECTION ABOVE DOOR | DOOR FRAME MOUNTED | SMOKE DETECTOR LISTED FOR FRAME MOUNTING OR AS PART OF CLOSER ASSEMBLY | CEILING MOUNTED | |
|---------------------------------------|--|--|------------------------------------|---|
| | | | SMOKE DETECTOR CEILING MOUNTED | ONE DETECTOR MOUNTED ON EITHER SIDE |
| d | 0 - 610 mm (0 - 24 in.) ON BOTH SIDES OF DOORWAY | d=610mm (24 in.) DETECTOR OR DETECTOR CLOSER MOUNTED ON EITHER SIDE | B | 100-300 mm or max. 1.52 m (5 ft) d min. but not less than 305 mm (12 in.) |
| | | | D | 100-300 mm d1 ≤ 610mm (24 in.) d2 > 610 mm (24 in.) 1.52 m (5 ft) max. min. = d 2 |
| | | | F | 100-300 mm or 1.52 m (5 ft) max. min. = d |
| OVER 610 mm (24 in.) ON ONE SIDE ONLY | OVER 610 mm (24 in.) ON BOTH SIDES | d1 ≤ 610mm (24 in.) d2 > 610mm (24 in.) DETECTOR OR DETECTOR CLOSER MOUNTED ON HIGHER SIDE | TWO DETECTORS REQUIRED | |
| | | | 1.52 m (5 ft) max. min. = d | |
| OVER 1524 mm (60 in.) | | | MIGHT REQUIRE ADDITIONAL DETECTORS | |

- NOTES:**
- All smoke detectors shall be located a minimum of three (3) feet from any HVAC diffuser.
 - All manual pull station shall be mounted no less than 42" to the bottom of the box, and no more than 48" to the top of the box from the finished floor.
 - All strobe and horn/strobes shall be located so the bottom of the device is not less than 80 inches above the finished floor and not greater than 96 inches above the finished floor.
 - All notification devices shall be located no less than 6 inches below finished ceilings.
 - The candela rating of the strobes or horn/strobes shall be shown on the drawings.
 - The location of the notification devices shall be at a uniform height for all devices.
 - All cables, conduits, or wire mold shall be securely fastened to the structure.
 - Smoke detectors shall be located in the ceiling no less than 4 inches from a sidewall to the nearest edge of the detector.
 - Drawings indicate general fire alarm device locations and Field Verify device locations with minimal deviations and document any changes.
 - FACP & Power Supplies shall be on a dedicated 120V, 20A circuit breaker marked in red with lock-on provision.
 - Fire Alarm wire paths are reserved for fire alarm cabling only. Including all UL listed fire barrier penetrations.
 - Outdoor Weatherproof Horn/Strobe is to be mounted 10' 00" AFF in line with the FDC.
 - All ceilings are 10' or below unless otherwise noted.
 - Default batteries are 18 - amp hour unless otherwise noted.
 - LED Remote Test Switches are to be mounted directly below the duct detector. Per NFPA 70, NEC, the manual controls shall be located more than 6'-6" above the finished.
 - In the bottom of the elevator hoist-way which is sprinklered the detectors shall be with 24" of the sprinkler head.

GIBBENS DRAKE SCOTT, INC.
Missouri State Certificate of Authority #000816
9201 E. 63rd STREET, SUITE 100
RAYTOWN, MISSOURI 64133

PROFESSIONAL ENGINEER STAMP
JAY R. GUERRA
NUMBER E-26382
10/14/2024
LICENSE # E-26382

| REVISIONS: | DATE: |
|------------|-------|
| | |
| | |
| | |
| | |

ENVISION TECHNOLOGY GROUP
913-491-1700 6985 W 153rd St
913-491-1701 Overland Park, KS 66223

LTX HANGER

SITE: 604 W 47th St Kansas City, Missouri 64112

TITLE: Device Installation, NFPA 72 Reference

| | | |
|-------------------|-------------------|--------------|
| SCALE AT: | DATE: 10/9/2024 | DESIGNED BY: |
| PROJECT NO: 10159 | DRAWING NO: FA-04 | REVISION: |

NFPA 72 Device Reference