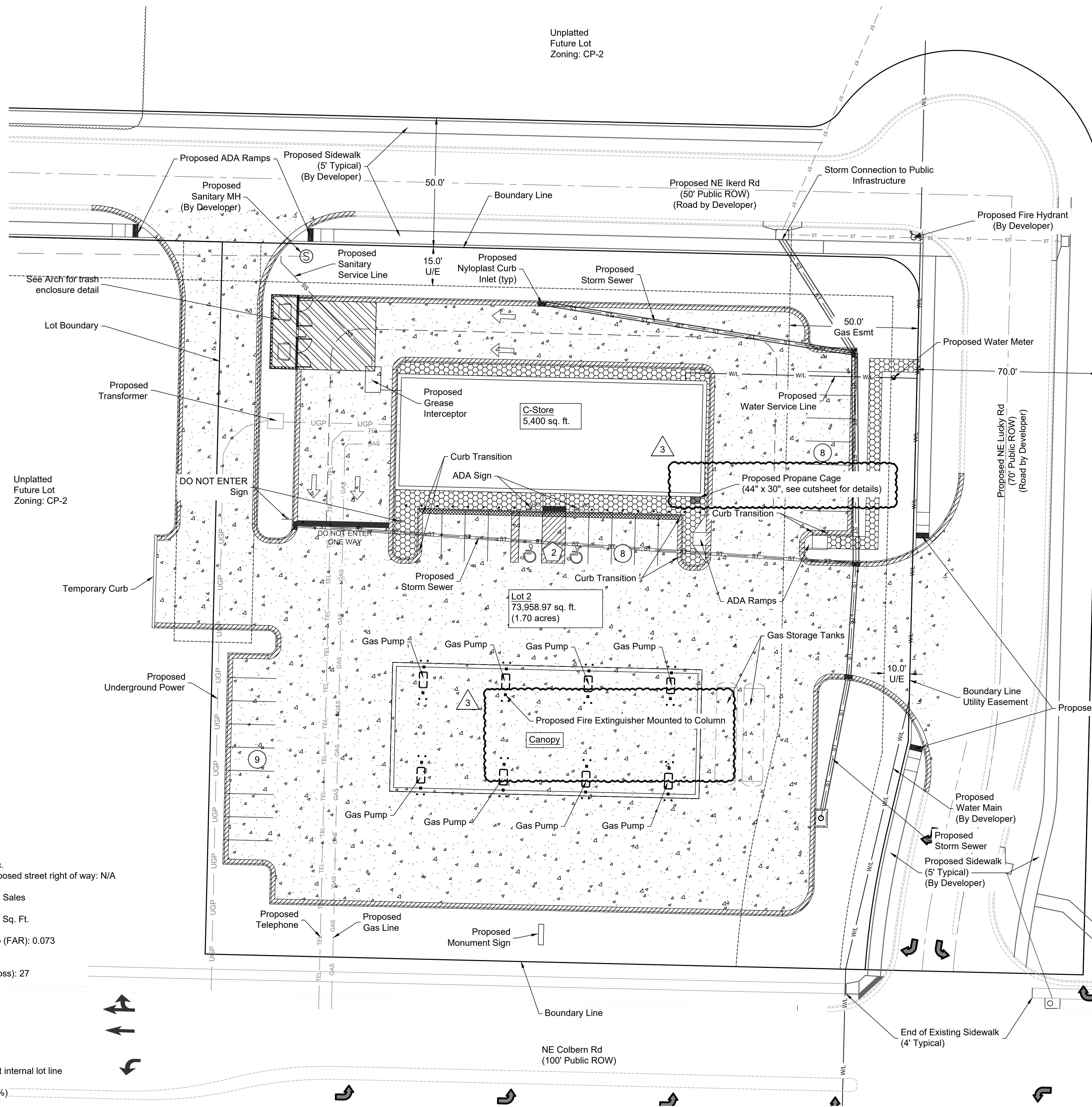


dbym  
Nov 05, 2024 1:39pm  
Z:\RIC Design\2022-01\31\DWG\Sheets\FDP\22-0133 FDP-GEN-LAY-01.dwg



SITE DATA TABLE (Proposed):

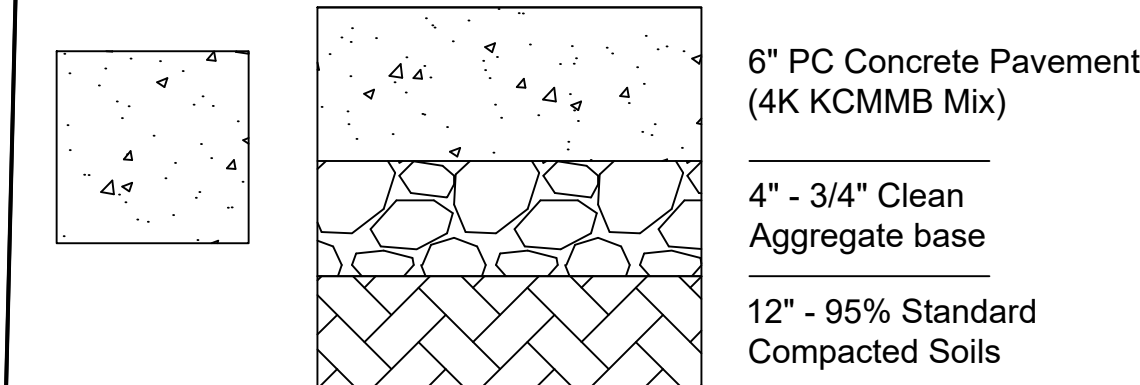
Proposed Building Area: 5,400 SF

LOT 2:

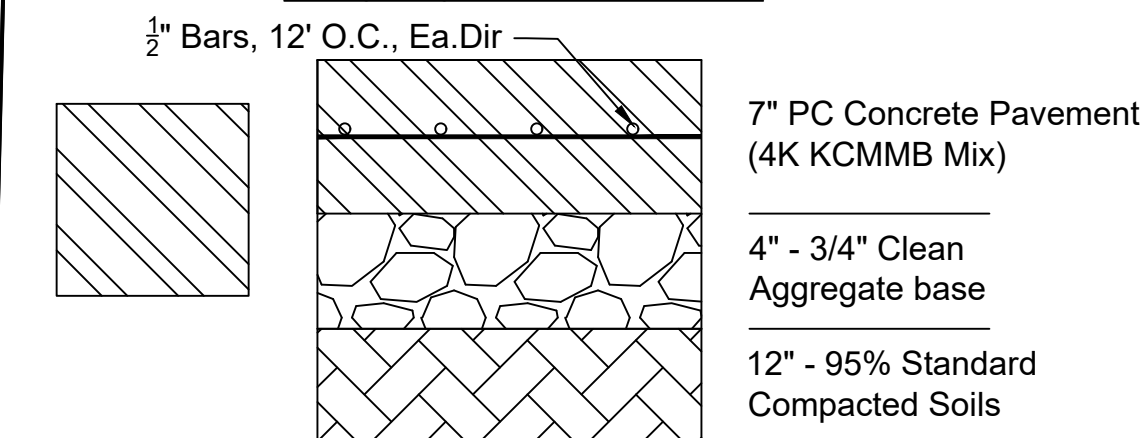
- A. Zoning: CP-2
- B. Total Lot Area: 73,959 Sq. Ft. = 1.70 Ac.
- C. Land Area or acres for existing and proposed street right of way: N/A
- D. Net Land Area: 1.70 Acres
- E. Proposed Use: Convenience Store/Fuel Sales
- F. Height above Grade at Building: 25.67'
- G. Gross Floor Area - Main Building: 5,400 Sq. Ft.
- H. Total Floor Area: 5,400 Sq. Ft.
- I. Building Coverage and Floor Area Ratio (FAR): 0.073
- J. Residential Gross and Net Density: N/A
- K. Commercial Parking  
Required - 5 stalls per 1,000 Sq. Ft. (gross): 27  
Provided: 27 Stalls (2 ADA)
- L. Parking Set Back:  
20 ft from Colbern Rd  
15 ft from other roads  
0 ft internal
- M. Building Set Back  
Front yard: 15 ft (from Colbern Rd)  
Side yard: 15 ft (from NE Lucky Rd), 0 ft internal lot line  
Rear yard: 15 ft (from NE Ikerd Rd)
- N. Impervious Area: 56,557 Sq. Ft. (76.47%)  
Pervious Area: 17,402 Sq. Ft. (23.53%)

PAVEMENT SECTION DETAILS

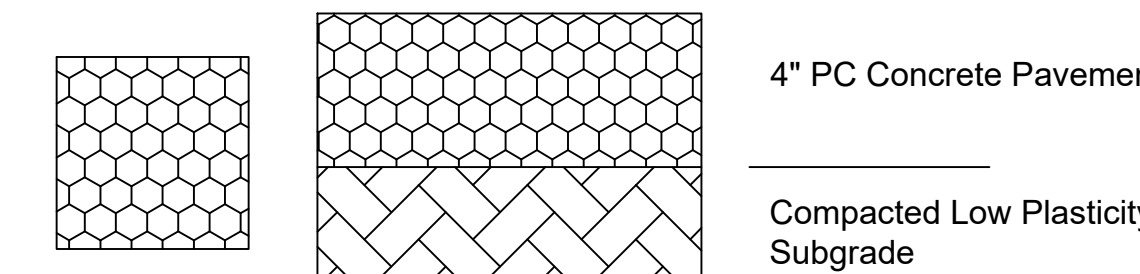
PC Concrete Pavement



Heavy Duty Concrete Pavement

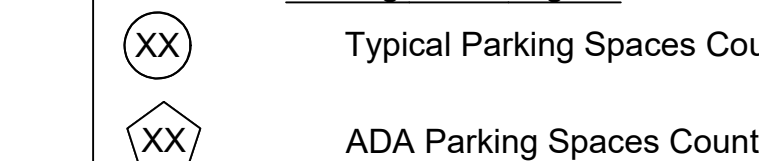


Sidewalk Pavement



Lot 2 Information:  
Required Parking: 27 (5 / 1000 sq ft of gfa)  
Provided Parking: 27 (2 ADA)

Parking Count Legend



General Layout

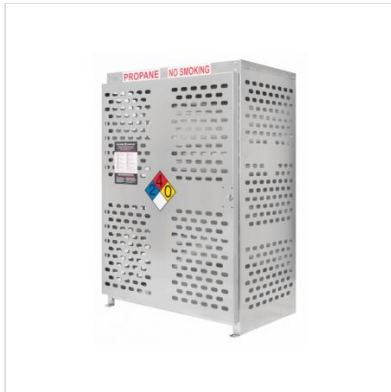
NO.	DATE	REVISION
3	11/5/2024	Revised Site Plan
2	9/18/2024	Revised Grading
1	6/16/23	Per City Comments

DRAWN BY: ALS  
CHECKED BY: DJB





## 18 Propane Tanks (20 LB) - Outdoor - Vertical Storage - Laser Cut Aluminum - Gas Cylinder Cage



### Model #CBAL18302LSAAM

**PRICE: \$875.00**

<https://www.usasafety.com/CBAL18302LSAAM>

This aluminum cylinder safety cabinet holds up to 18 propane tanks (20 LB) in a vertical position. The cabinet doors and side panels are made with laser cut aluminum. The top and back of the cabinet is made from solid aluminum panels. The door on this unit has a heavy duty lock receiver and tamper resistant stainless steel hinges. Tanks sit vertically on solid 14 gauge galvanized steel shelf. "Propane - No Smoking" and 2-4-0 OSHA Diamond safety signage is included. Each footpad on the cage has one 13/16" pre-drilled hole to accommodate an anchor bolt. Meets OSHA and NFPA requirements for LP fuel cylinder storage. Ships assembled. Shelf weight capacity 300 lbs each. Cabinet dimensions (WxDxH): External: 44" x 30" x 65", Estimated Internal per section: 43.75"x26"x18"

**Status:** Built to order

**Shipping:** Ships 1-2 weeks from order date. You will be sent a tracking # upon shipment.

**Cabinet capacity:** 18 cylinders (20 lb) of 12.5" diameter

**Cabinet dimensions:** External: 44"w x 30"d x 65"h

Internal per section (approx): 43.75"w x 26"d x 18"h

#### Gas Cylinder Locker Features:

- Made in the USA
- Gas cylinder locker meets OSHA 1910 and NFPA regulations
- Lockable door with heavy duty lock receiver (lock not included)
- Two 8" stainless steel door hinges
- Door can be left or right swing
- Laser cut aluminum sides and door allow visibility into cabinet
- Top and back are solid aluminum panels
- Pre-drilled holes (13/16") for anchoring each foot pad
- Safety signage included
- Ships assembled ready for use
- Product panels bolt together and can be disassembled
- Product Weight: 165 lbs

Read more product details at [www.usasafety.com](http://www.usasafety.com)

**Get more information: Call 877-805-8650 (M-F, 9-5 pm CST)**

USA Safety Solutions, Inc | PO Box 44282 | Madison, WI 53744

P: 877-805-8650 | F: 866-465-6101 | E: [sales@usasafety.com](mailto:sales@usasafety.com)