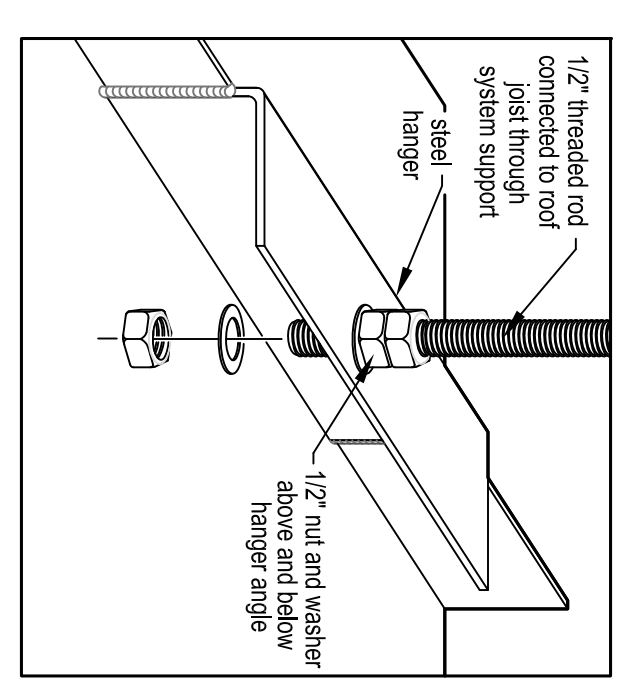


HOOD INFORMATION TABLE																								
AIR REQUIREMENTS																								
HOOD NO.	MODEL	LGTH	WIDTH	HOODING TEMP.	MAX. QTY	EXHAUST		TOTAL		SUPPLY COLLAR		HOOD CONSTRUCTION	WOOD CONFIGURATION	FLOOR FINISH	CEILING ENCLOSURE									
						SIZE	CFM	SIZE	CFM	SIZE	SUPPLY					SIZE	SUPPLY							
HO1.1	SC	9'6"	54"	HEAVY	1	14"	20"	3328	603"	3328	2	10"	24"	1664	25"	3328	430 S/S	YES	—	—	—	430 S/S	ADP	—
HO2.1	SC	9'5"	54"	HEAVY	1	14"	20"	3328	603"	3328	2	10"	24"	1664	25"	3328	430 S/S	YES	—	—	—	430 S/S	ADP	—

HOOD INFORMATION TABLE CONTINUED

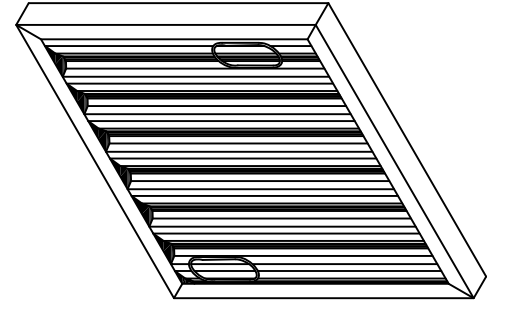
FILTERS					LIGHTS					FIRE SYSTEM				
HOOD NO.	QTY	HGT	LGTH	TYPE	QTY	HGT	LGTH	TYPE	QTY	WIRE (RATED)	WIRE S/O	END S/O	TYPE	SIZE, GALLON
HO1.1	3	16"	20"	3/8"	2	16"	25"	3/8"	2	INCANDESCENT	-	3"	-	-
HO2.1	3	16"	20"	3/8"	2	16"	25"	3/8"	2	INCANDESCENT	-	3"	-	-

\* 78" TALL BACK AND END WALL SPLASH PANEL PROVIDED WITH HOOD 1\*

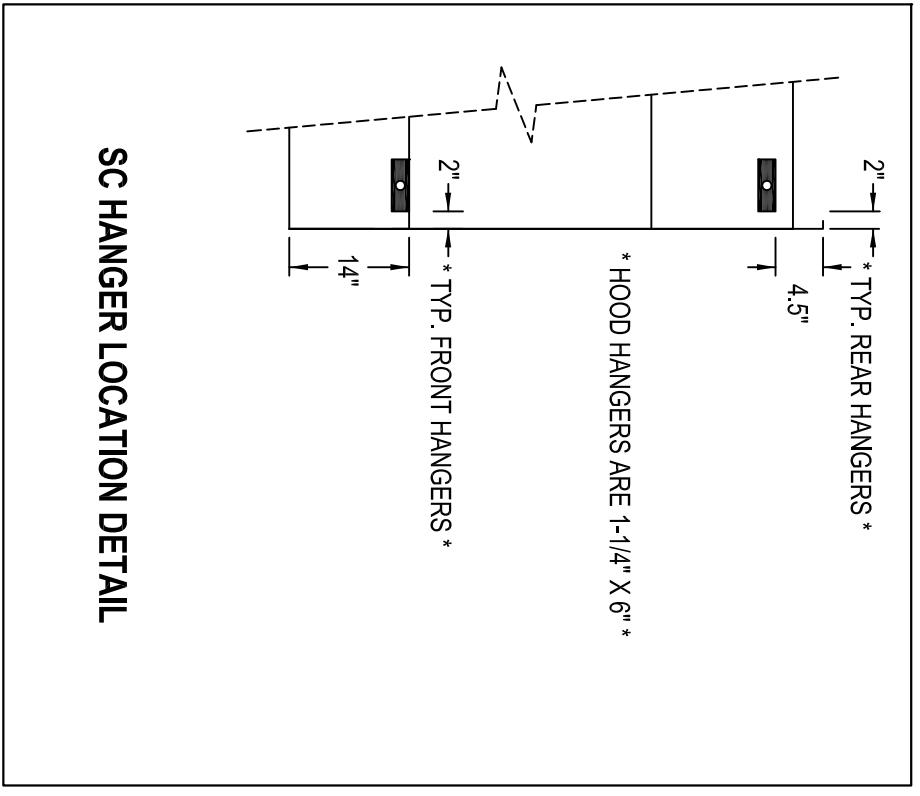


### STAINLESS STEEL BAFFLE TYPE GREASE FILTERS

- Features:
- Stainless Steel construction for tough commercial kitchen abuse.
  - Maximum permanent protection against rust and corrosion.
  - Easy to install, possible flame barrier protection.
  - Seamless smooth surfaces permit constant grease run-off into hood collection troughs.

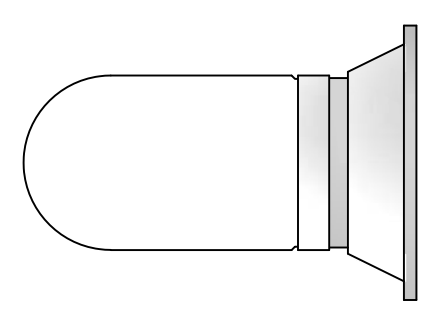


- Effective Area:  
The effective areas for the following nominal size filters are:
- 10' x 20' x 2' .....1.00 square feet
  - 12' x 16' x 2' .....0.97 square feet
  - 12' x 20' x 2' .....1.25 square feet
  - 16' x 16' x 2' .....1.36 square feet
  - 16' x 20' x 2' .....2.25 square feet
  - 16' x 25' x 2' .....2.24 square feet
  - 20' x 25' x 2' .....2.88 square feet

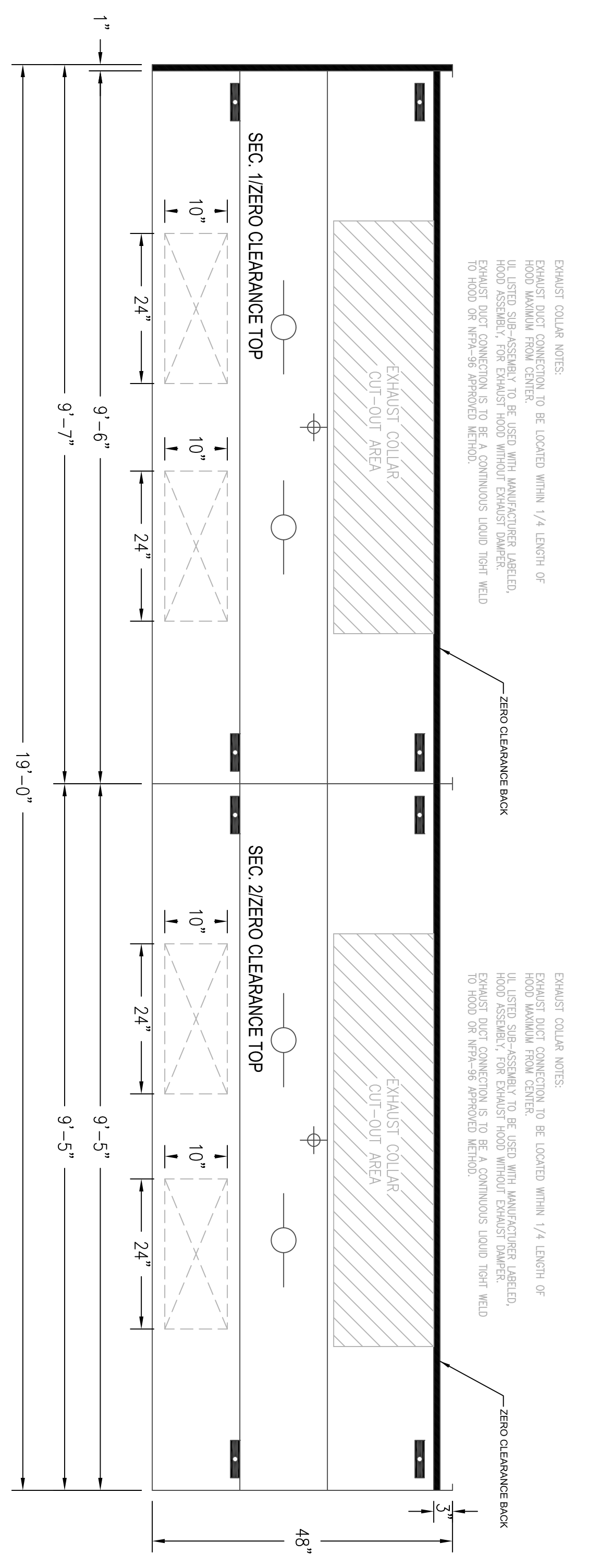
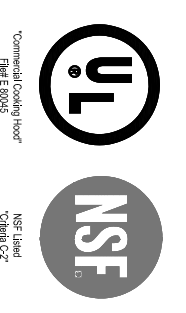


### INCANDESCENT LIGHT FIXTURE

- Features:
- Vapor proof and sanitary.
  - Specifically designed for greased canopy hoods.
  - Mounts to any 3 1/2" or 4" standard junction box.
  - Rust proof cast aluminum fixtures are provided with a brushed finish to match stainless steel hood interiors.
  - Impact and thermal shock resistant optics.

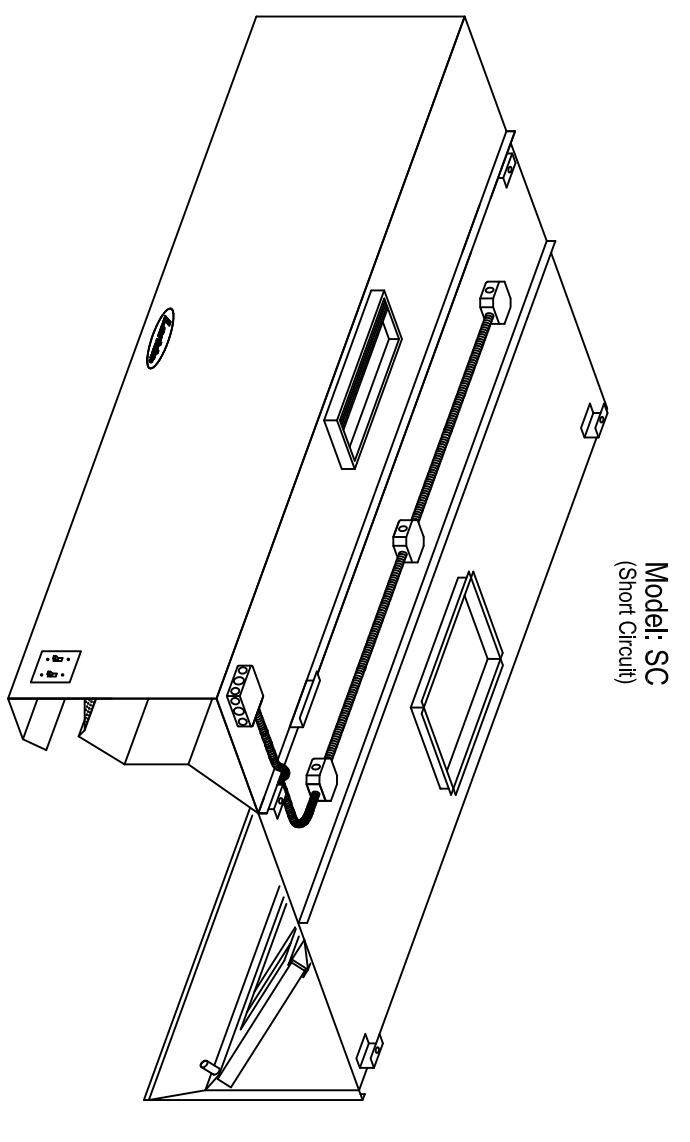
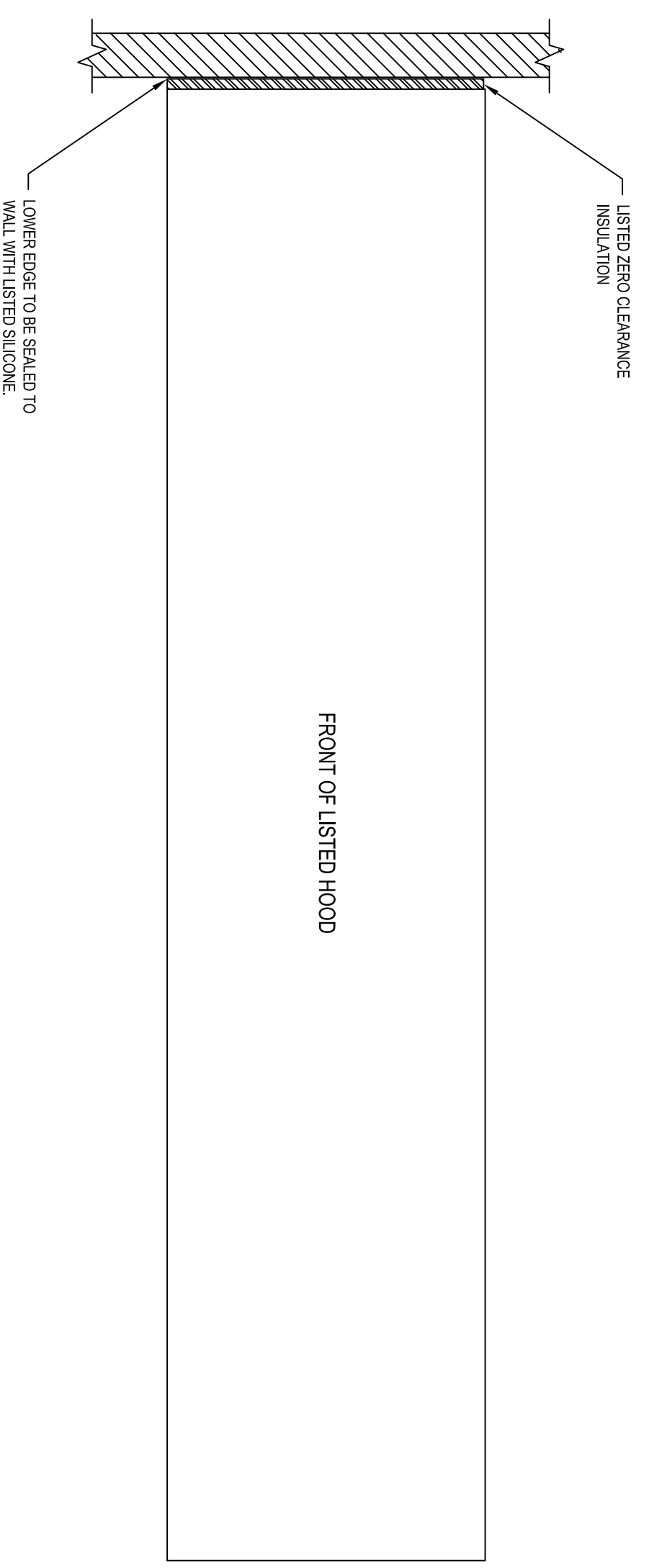


- Specifications:
- Fixture body: Cast aluminum
  - Socket: Porcelain body with copper shell
  - Wire leads: 6" long, 14 AWG
  - Gaskets: Silicone
  - Globe: Clear thermal shock resistant glass
- Notes: Underwriters laboratories standard #57 requires that fixtures in commercial cooking hoods must be mounted a minimum of 4 ft. above the cooking surface.



HOOD 1

HOOD CONFIGURATION	LEGEND
■ WALL	□ EXHAUST COLLAR (MOUNTED) TO BACK
■ HOODS BACK TO BACK	□ EXHAUST COLLAR (LOOSE) TO BACK
■ HOODS END TO END	□ EXHAUST COLLAR (LOOSE) TO END
■ OTHER COLLARS (SHIPPED LOOSE)	□ EXHAUST COLLAR (LOOSE) TO END
■ SWITCH PANEL	□ EXHAUST COLLAR (LOOSE) TO END
■ SUPPLY COLLAR (MOUNTED)	□ EXHAUST COLLAR (LOOSE) TO END
■ SUPPLY COLLAR (LOOSE)	□ EXHAUST COLLAR (LOOSE) TO END
■ HANGER	□ EXHAUST COLLAR (LOOSE) TO END
■ PROBE	□ EXHAUST COLLAR (LOOSE) TO END



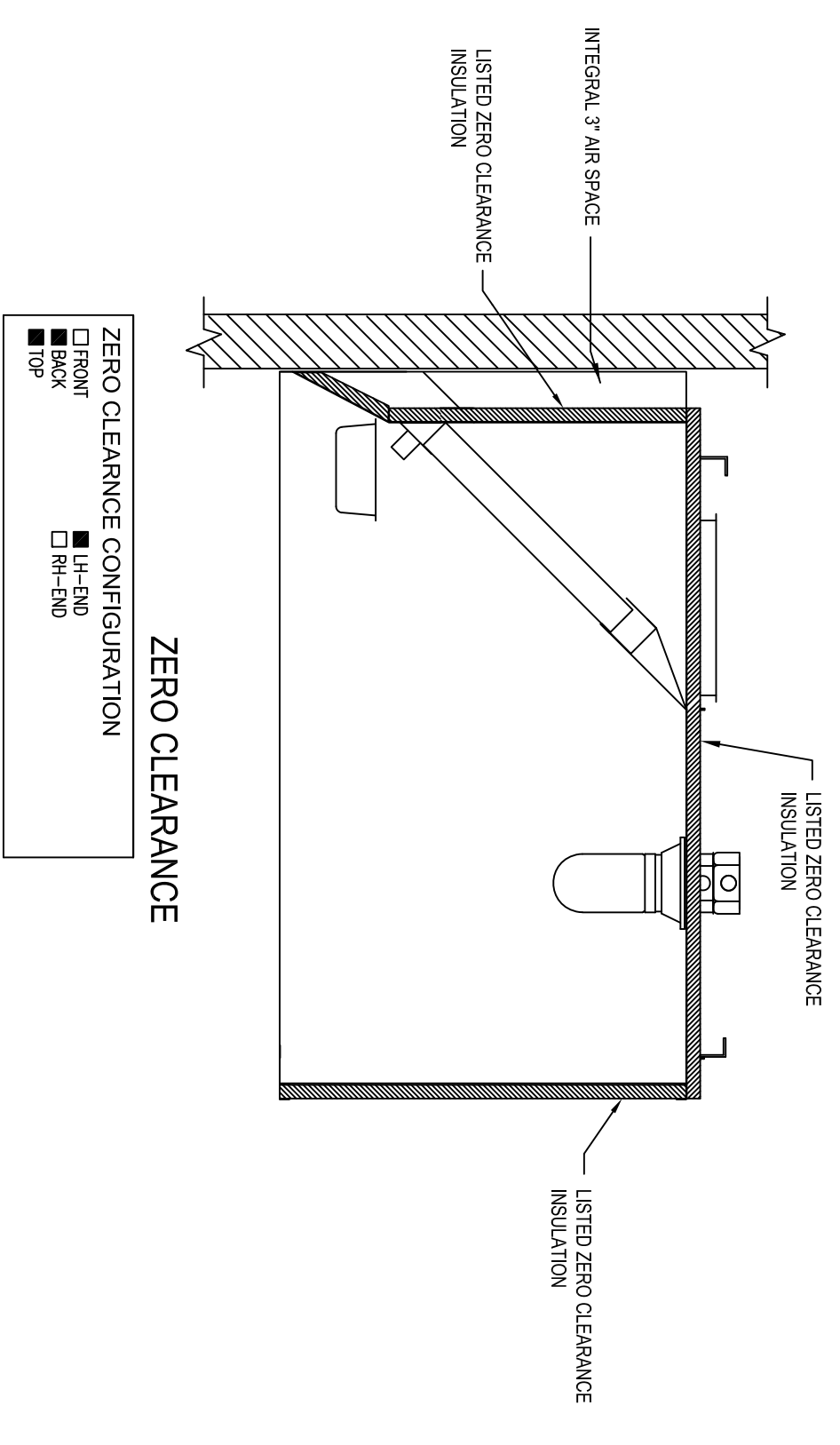
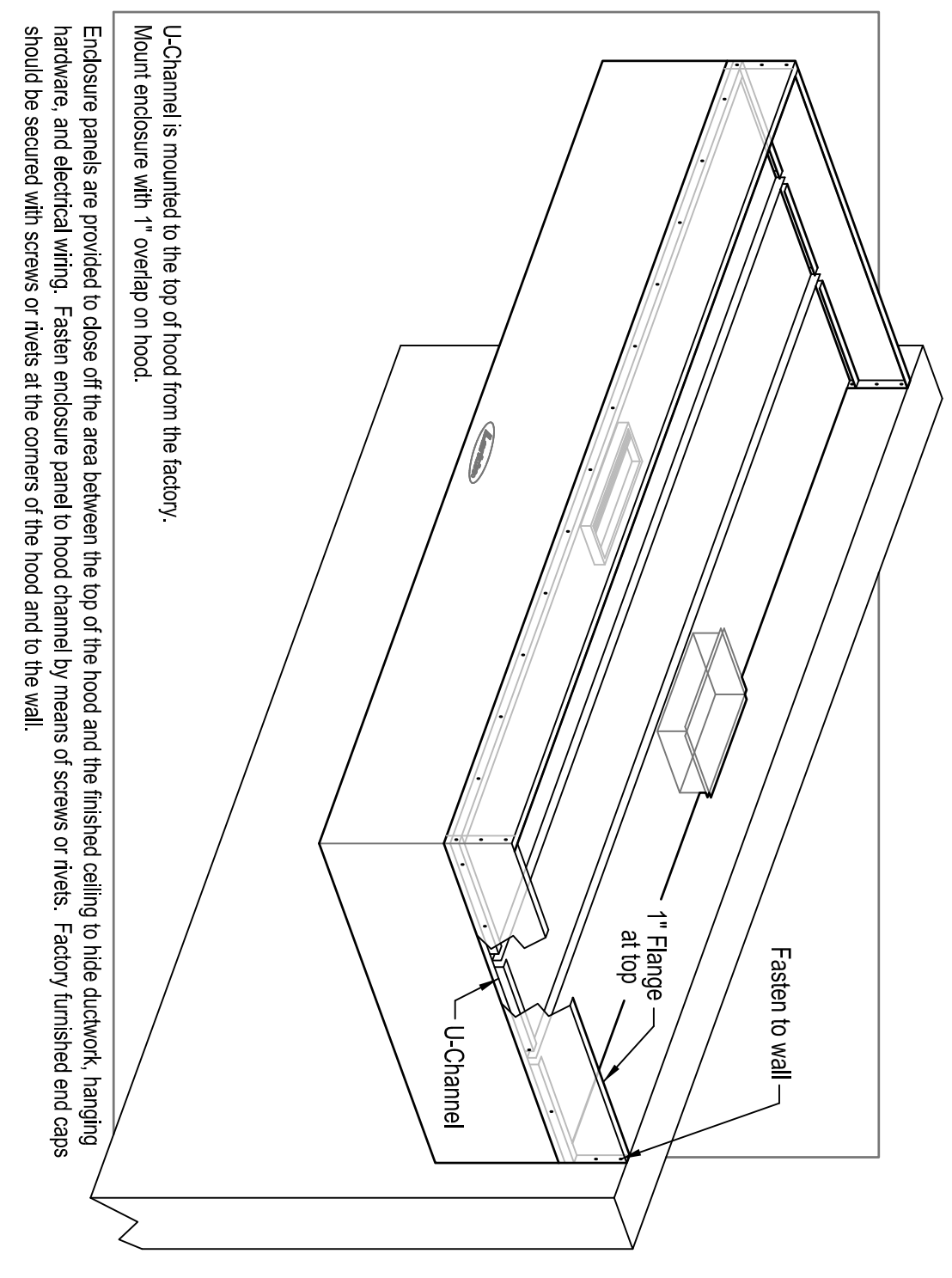
Specifications:

Hood shall be self-compensating type introducing make-up air inside the hood through a full length, self-balancing act. The hood shall be fabricated from Type 430 stainless steel with 14 polish on all exposed surfaces. The supply plenum shall be lined with 1" thick 3 lb. density full back insulation, with a flame spread rating of 25 or less as tested by UL 723 to impede condensation from forming on hood surfaces. Supply air plenum shall contain a balancing plate for even distribution of make-up air.

Hood shall be of double wall construction with seams and joints welded and sealed liquid tight, to conform to NFPA 96. Corners of hood shall be braced as needed for larger hoods. Grease filters shall be UL Classified, non-dripping, with type of size and quality to extend the full length of hood and shall be easily removable for cleaning purposes.

All exhaust plenum surfaces and filters shall drain into a removable grease trough and be conveyed to a removable grease container for easy cleaning. Incandescent lights shall be installed at approximately 3" intervals and shall be UL Listed for use in exhaust hoods and allow up to a 100 wattling lamp for easy field connection. Supply collar shall include a UL Listed air damper.

The hood shall be constructed in accordance with NFPA 96, bear the NSF Seal of Approval and the ETL Listed. Hood to be manufactured by LARKIN INDUSTRIES, INC., 1480-222-4038.



### APPROVALS

HOOD 1

SC 354 EXHAUST CFM PER FT. MINIMUM 600 DEG. MAX. COOKING EQUIPMENT ETL Listed in compliance w/ ANSIUL-710 ETL REPORT #101435159PRT-001 www.intertek.com/WebClients/ITS/DLP/Products.nsf/\$search?OpenForm

APPROVALS

LARKIN HOODS ARE MANUFACTURED IN ACCORDANCE WITH THE STANDARD FOR EXHAUST HOODS FOR COMMERCIAL COOKING EQUIPMENT (ANSIUL-710)

NSF

NFPA

Intertek

ETL

us

SHEET NO. H-1



114 David Green Road • Birmingham, Alabama 35244 Phone: 987-1535

## DRAGON J

REVISIONS	DATE
DESCRIPTION	
MARK	
SHEET TITLE	
HOOD DETAILS AND SPECIFICATIONS	
SCALE 3/4" = 1'-0"	
DRAWN BY	CHECKED BY
PROJECT NO.	DATE
L-445773	10/29/24
SHEET NO.	
H-1	

