

SPECIFICATIONS

- Notes:
- 1. 4" FPT inlet/outlet with 3" and 4" plain end fittings.
  - 2. Unit weight - 49 lbs. (wet weight 216 lbs.)
  - 3. Maximum operating temperature: 150° F continuous
  - 4. Capacities - Liquid: 20 gal.  
Grease: 130 lbs. (17.8 gal.) @35 GPM  
Grease: 127 lbs. (17.3 gal.) @50 GPM  
Grease (99% - at least 2 units in series): 180 lbs. (24.7 gal.) @35 GPM  
Solids: 1.8 gal.
  - 5. Built-in flow control.
  - 6. For gravity drainage applications only.
  - 7. Do not use for pressure applications.
  - 8. Cover placement allows full access to tank for proper maintenance.
  - 9. Vent not required unless per local code.
  - 10. Engineered inlet and outlet diffusers are removable to inspect/clean piping.
  - 11. Integral air relief / anti-siphon.
  - 12. Designed for indoor, on-floor, below-grade or low-profile under sink installations.

ENGINEER SPECIFICATION GUIDE

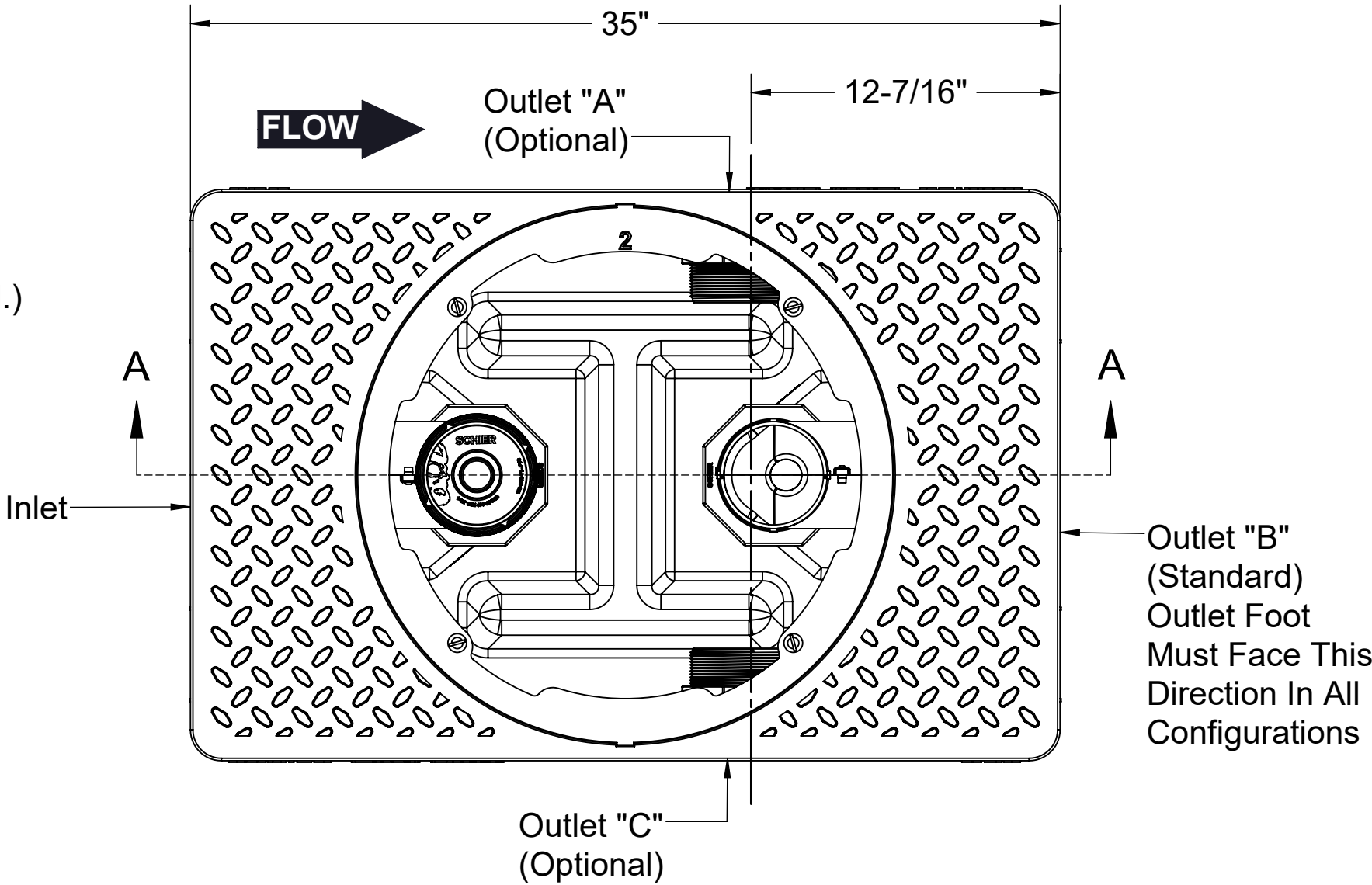
Schier Great Basin™ grease interceptor model # GB2 shall be lifetime guaranteed and made in USA of seamless, rotationally-molded polyethylene with minimum 5/16" uniform wall thickness. Interceptor shall be furnished for above or below grade installation. Interceptor shall be certified to ASME A112.14.3 (type C) and CSA B481.1, with field cut riser system, built-in flow control and three outlet options. Interceptor flow rate shall be 35 or 50 GPM. Interceptor grease capacity shall be 130 lbs. @ 35 GPM or 127 lbs. @ 50 GPM. Cover shall provide water/gas-tight seal and have minimum 450 lbs. load capacity.

CERTIFIED PERFORMANCE

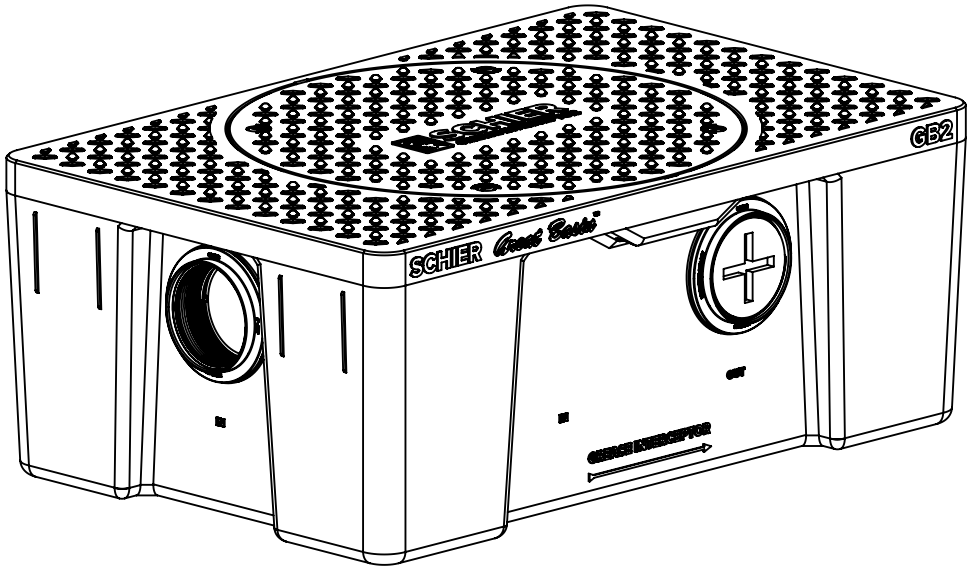
Great Basin™ hydromechanical grease interceptors are third party performance-tested and listed by IAPMO to ASME #A112.14.3 and CSA B481.1 grease interceptor standards and greatly exceed requirements for grease separation and storage. They are compliant to the Uniform Plumbing Code, the National Standard Plumbing Code, the National Plumbing Code of Canada, and the International Plumbing Code.



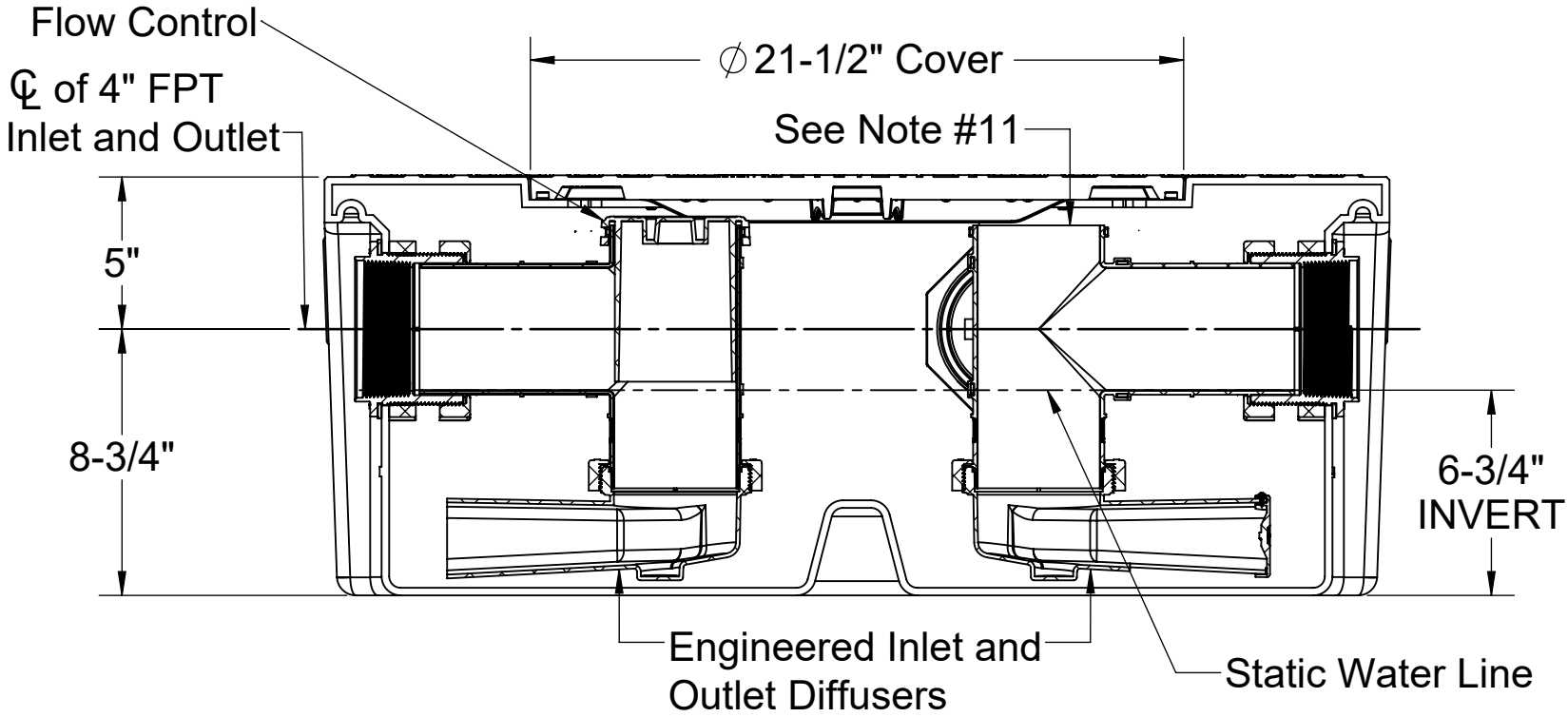
Satisfies Miami DERM 99% efficiency requirements when at least 2 units are installed in series. Product labels are permanently attached to inside and outside of unit for easy viewing.



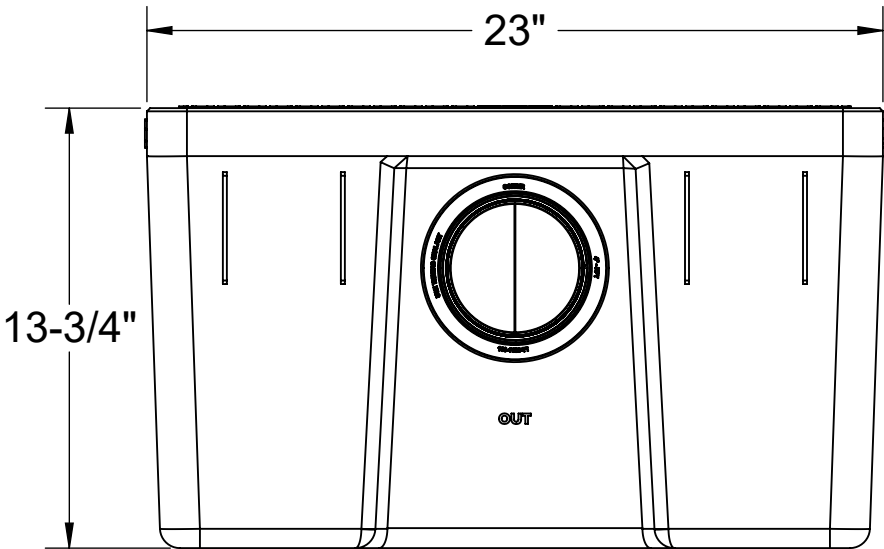
TOP VIEW  
(COVER REMOVED FOR CLARITY)



ISOMETRIC VIEW



SECTION A-A



END VIEW

SPECIFICATION SHEET

MODEL NUMBER:

GB2

PROPRIETARY AND CONFIDENTIAL

THE INFORMATION CONTAINED IN THIS DRAWING IS THE SOLE PROPERTY OF SCHIER PRODUCTS. ANY REPRODUCTION IN PART OR AS A WHOLE WITHOUT THE WRITTEN PERMISSION OF SCHIER PRODUCTS IS PROHIBITED.

PART NUMBER: 4065-001-05

DESCRIPTION:

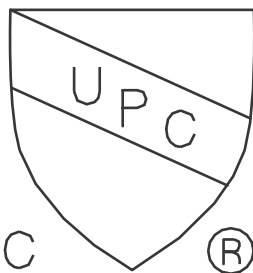
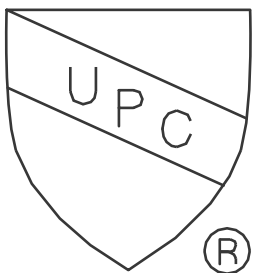
GB2 GREASE INTERCEPTOR 35 GPM / 50 GPM, 4" FPT INLET/OUTLET, WITH 3" AND 4" PLAIN END FITTING ADAPTERS AND PEDESTRIAN RATED COVER

DWG BY: C.SINCLAIR

DATE: 5/5/2022

REV: -

ECO: -



SCHIER

6455 Woodland Dr  
Shawnee, KS 66218  
Tel: 913-951-3300  
Fax: 913-951-3399  
schierproducts.com

SPECIFICATIONS

Notes:

- 1. 4" FPT inlet/outlet with 2" and 3" plain end fittings.
- 2. Unit weight - 39 lbs. (wet weight 123 lbs.)
- 3. Maximum operating temperature: 150° F continuous
- 4. Capacities - Liquid: 10 gal.  
Grease: 70 lbs. (9.6 gal.) @20 GPM  
Grease: 64.9 lbs. (8.9 gal.) @25 GPM  
Grease (99%): 15.85 lbs (2.2 gal.) @20 GPM 99.1%  
Solids: 1.3 gal.
- 5. Built-in flow control.
- 6. For gravity drainage applications only.
- 7. Do not use for pressure applications.
- 8. Cover placement allows full access to tank for proper maintenance.
- 9. Vent not required unless per local code.
- 10. Engineered inlet and outlet diffusers are removable to inspect/clean piping.
- 11. Integral air relief / anti-siphon.
- 12. Designed for indoor, on-floor, below-grade or low-profile under sink installations.

ENGINEER SPECIFICATION GUIDE

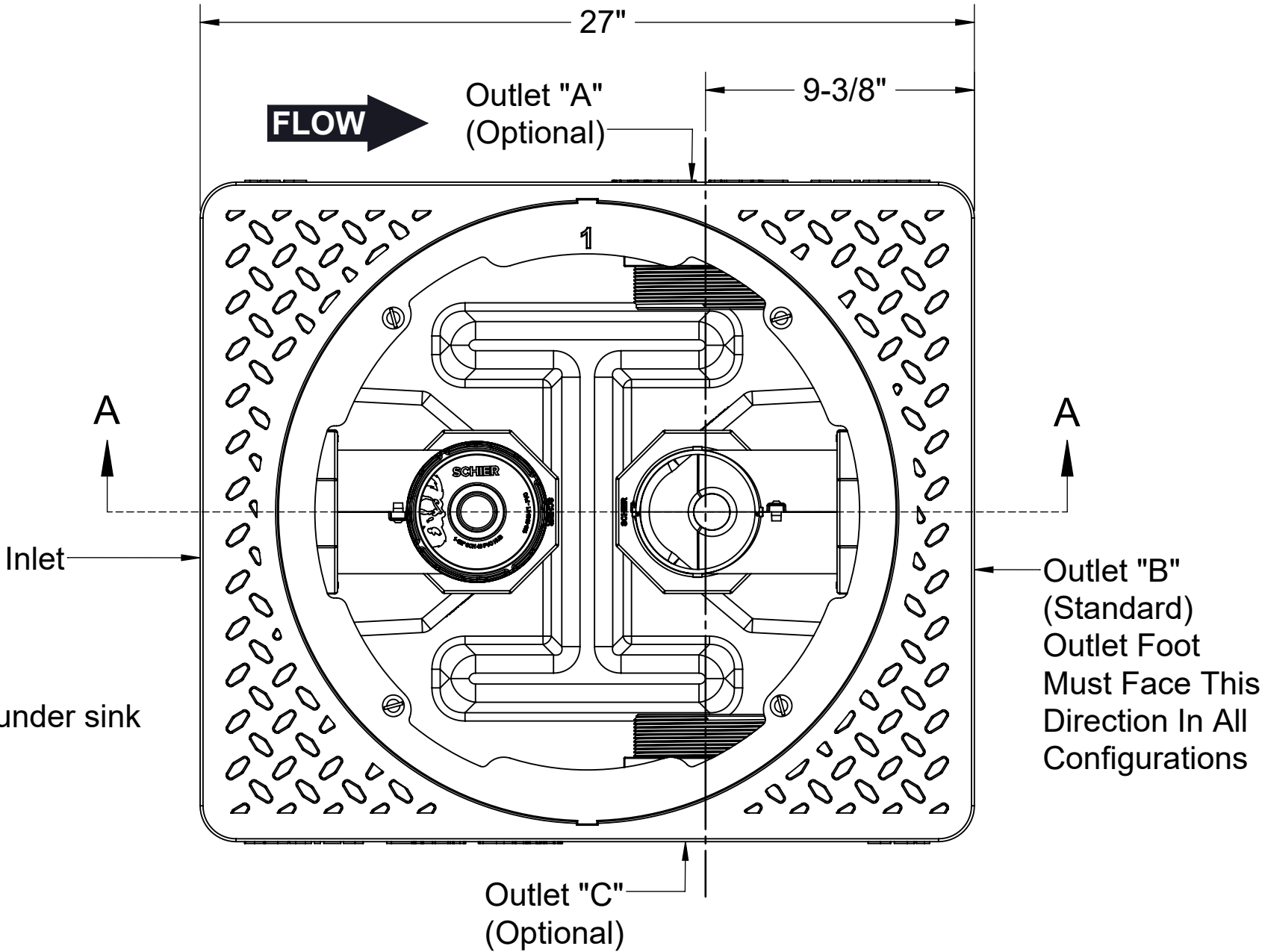
Schier Great Basin™ grease interceptor model # GB1 shall be lifetime guaranteed and made in USA of seamless, rotationally-molded polyethylene with minimum 5/16" uniform wall thickness. Interceptor shall be furnished for above or below grade installation. Interceptor shall be certified to ASME A112.14.3 (type C) and CSA B481.1, with field cut riser system, built-in flow control and three outlet options. Interceptor flow rate shall be 20 or 25 GPM. Interceptor grease capacity shall be 70 lbs. @ 20 GPM or 64.9 lbs. @ 25 GPM. Cover shall provide water/gas-tight seal and have minimum 450 lbs. load capacity.

CERTIFIED PERFORMANCE

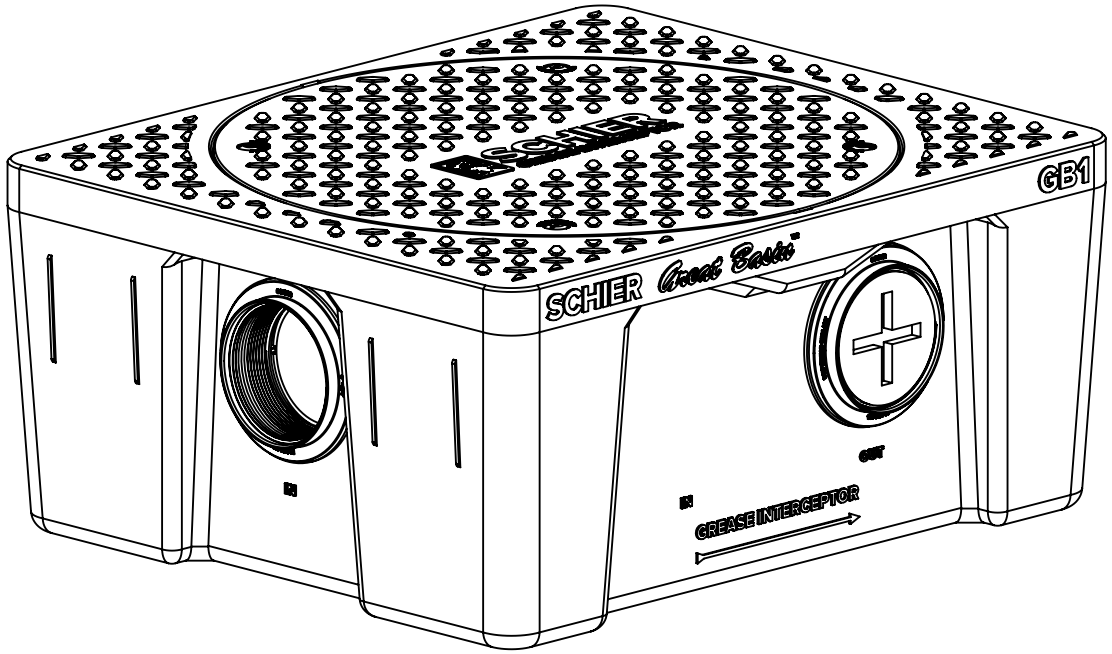
Great Basin™ hydromechanical grease interceptors are third party performance-tested and listed by IAPMO to ASME #A112.14.3 and CSA B481.1 grease interceptor standards and greatly exceed requirements for grease separation and storage. They are compliant to the Uniform Plumbing Code, the National Standard Plumbing Code, the National Plumbing Code of Canada, and the International Plumbing Code.



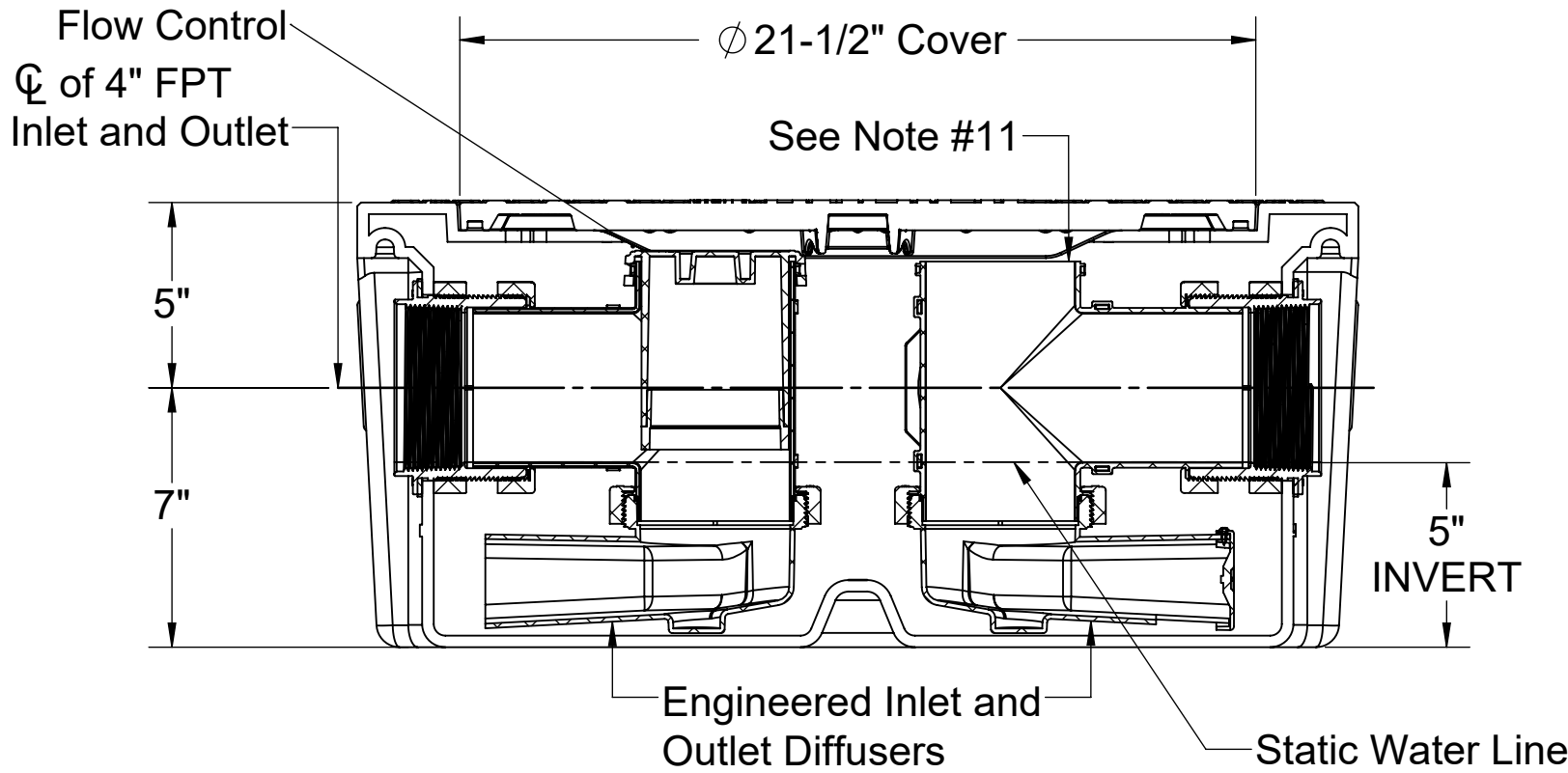
Satisfies Miami DERM 99% efficiency requirements. Product labels are permanently attached to inside and outside of unit for easy viewing.



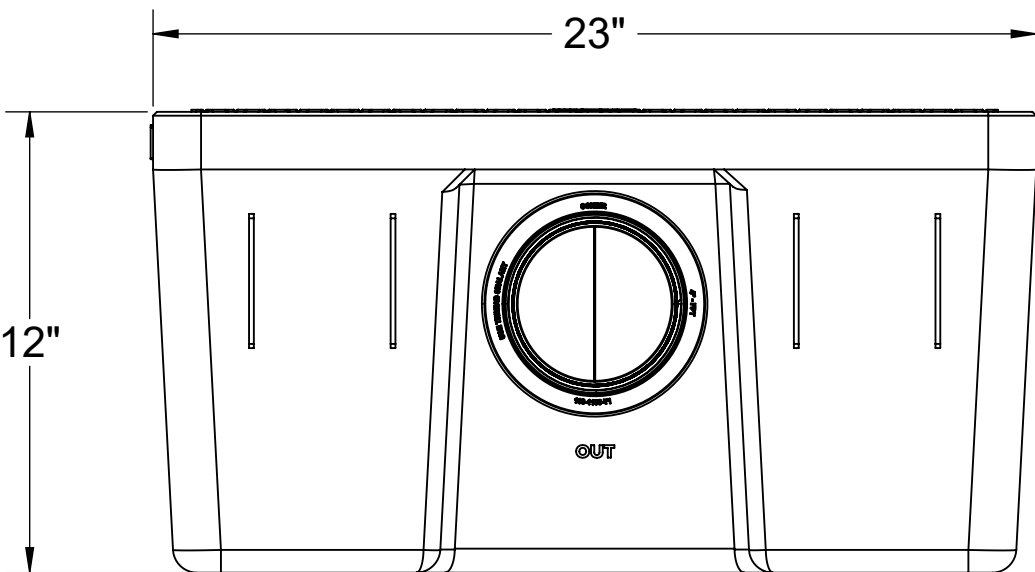
TOP VIEW  
(COVER REMOVED FOR CLARITY)



ISOMETRIC VIEW



SECTION A-A



END VIEW

SPECIFICATION SHEET

MODEL NUMBER:

GB1

PROPRIETARY AND CONFIDENTIAL

THE INFORMATION CONTAINED IN THIS DRAWING IS THE SOLE PROPERTY OF SCHIER PRODUCTS. ANY REPRODUCTION IN PART OR AS A WHOLE WITHOUT THE WRITTEN PERMISSION OF SCHIER PRODUCTS IS PROHIBITED.

PART NUMBER:

4060-001-04

DESCRIPTION:

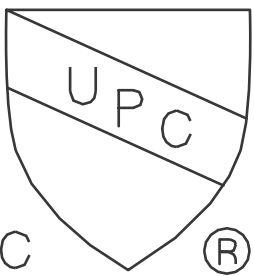
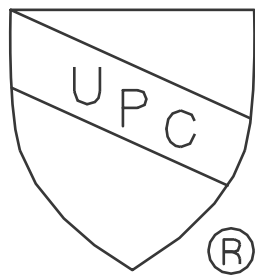
GB1 GREASE INTERCEPTOR 20 GPM / 25 GPM, 4" FPT INLET/OUTLET, WITH 2" AND 3" PLAIN END FITTING ADAPTERS AND PEDESTRIAN RATED COVER

DWG BY: C.SINCLAIR

DATE: 5/5/2022

REV: -

ECO: -



SCHIER

6455 Woodland Dr  
Shawnee, KS 66218  
Tel: 913-951-3300  
Fax: 913-951-3399  
schierproducts.com