



# HD Engineering & Design

*Solutions for all your engineering and design needs*

10/31/2024

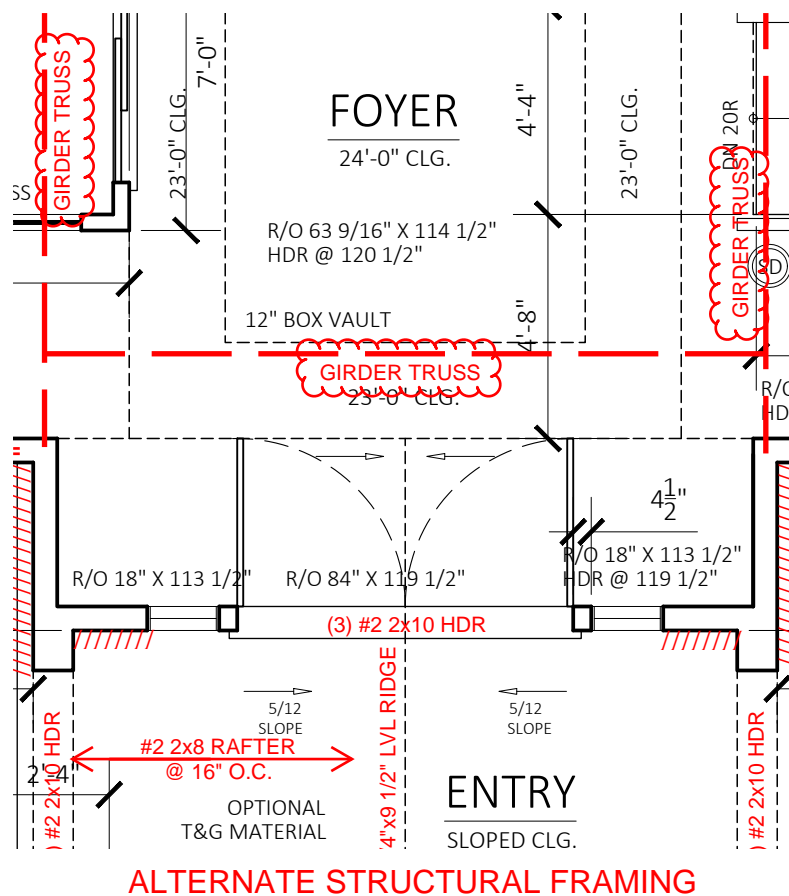
STARR HOMES, LLC

RE: PRRES20224156  
FRAMING REVIEW  
512 NE PROMISED VIEW DRIVE  
LEE'S SUMMIT, MO

Our firm has been asked to provide resolution for rough framing inspection items for the home being built at the location listed above. At the time of inspection the home was in a rough framed state.

## W10x12 Omitted at Front Entry

After review of the in field truss installation and provided truss layouts our firm determined the beam is not required. See alternate framing diagram below.



*Continued.....*



# HD Engineering & Design

*Solutions for all your engineering and design needs*

10/31/2024

STARR HOMES, LLC

RE: 23-332-B

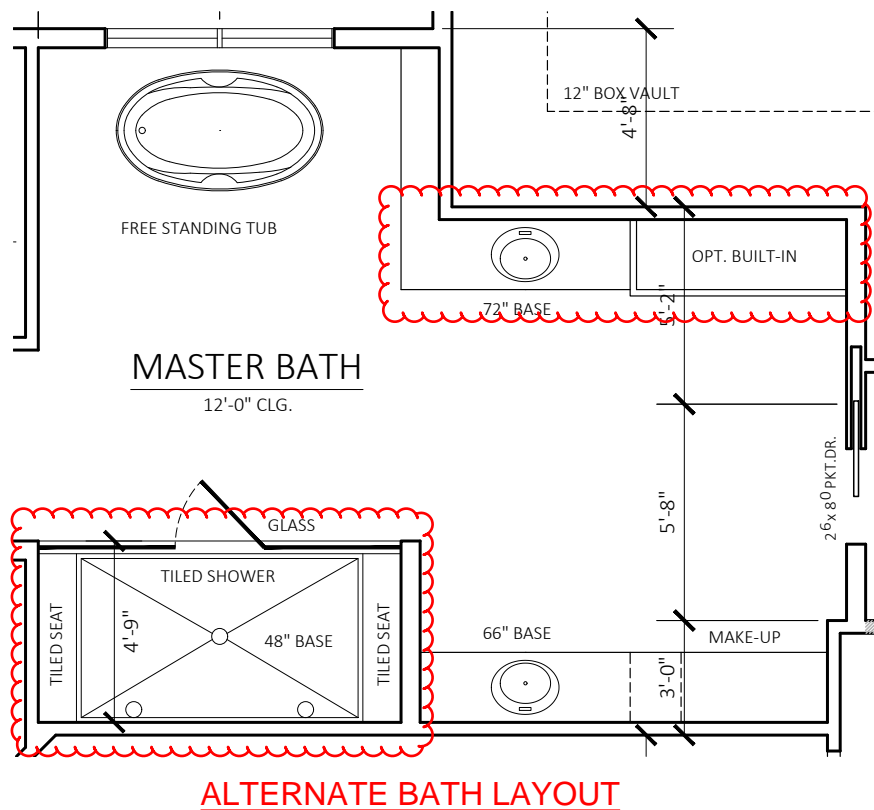
FRAMING REVIEW

512 NE PROMISED VIEW DRIVE

LEE'S SUMMIT, MO

## Master Bath Alternate

At the clients request an alternate bath layout was used for the master bath. The alternate layout did not affect the structural design of the home. See alternate layout below for the vanity and shower relocation.



*Continued.....*



# HD Engineering & Design

*Solutions for all your engineering and design needs*

10/31/2024

STARR HOMES, LLC

RE: 23-332-B

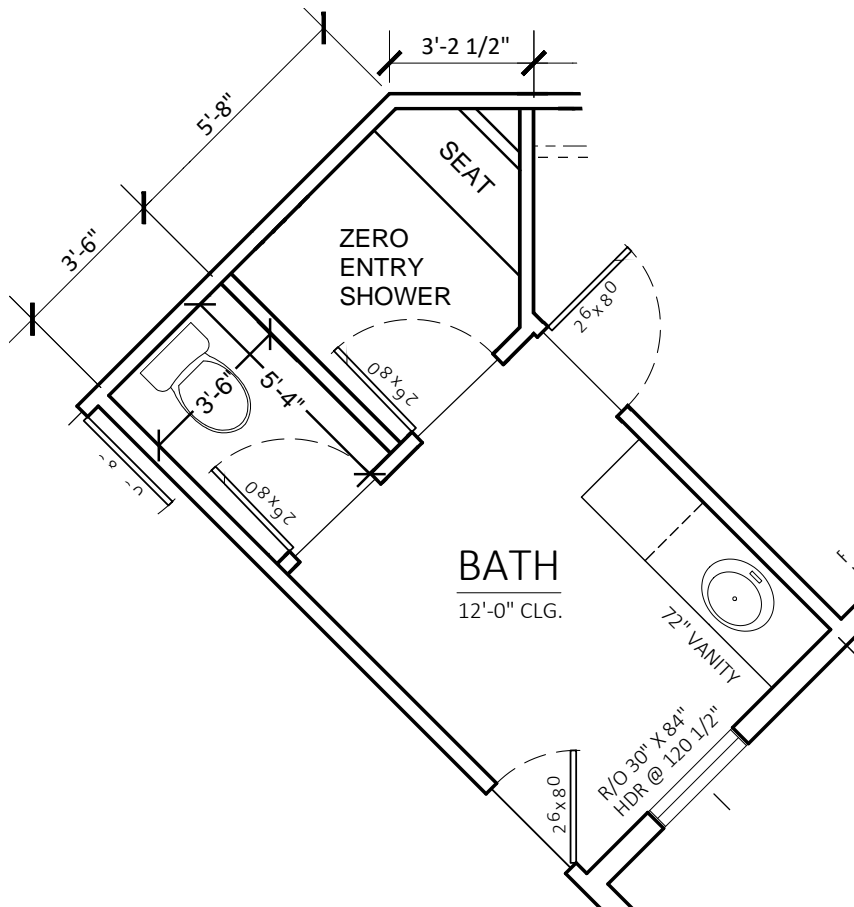
FRAMING REVIEW

512 NE PROMISED VIEW DRIVE

LEE'S SUMMIT, MO

## Bath Alternate at Sloan's Room

At the clients request an alternate bath layout was used for the on suite of Sloan's room. The alternate layout did not affect the structural design of the home. See alternate layout below for the water closet and shower.



## ALTERNATE BATH LAYOUT

We appreciate the opportunity to be of service to you on this project.  
If you have any questions regarding this report, please contact us.

Very truly yours,  
HD ENGINEERING & DESIGN, INC.

John Hulse, Principal

