

TENANT FINISH PLAN

REVIEWING AUTHORITY	LEE'S SUMMIT FIRE DEPT.
HEADS THIS SHEET	9
TOTAL HEADS FOR JOB	9
SCALE	1/8" = 1'-0"
DRAWN BY	MATT KNOX
REVISION DATE	
DATE DRAWN	11/12/24
CONTRACT NUMBER	J-2429
DRAWING NUMBER	DF

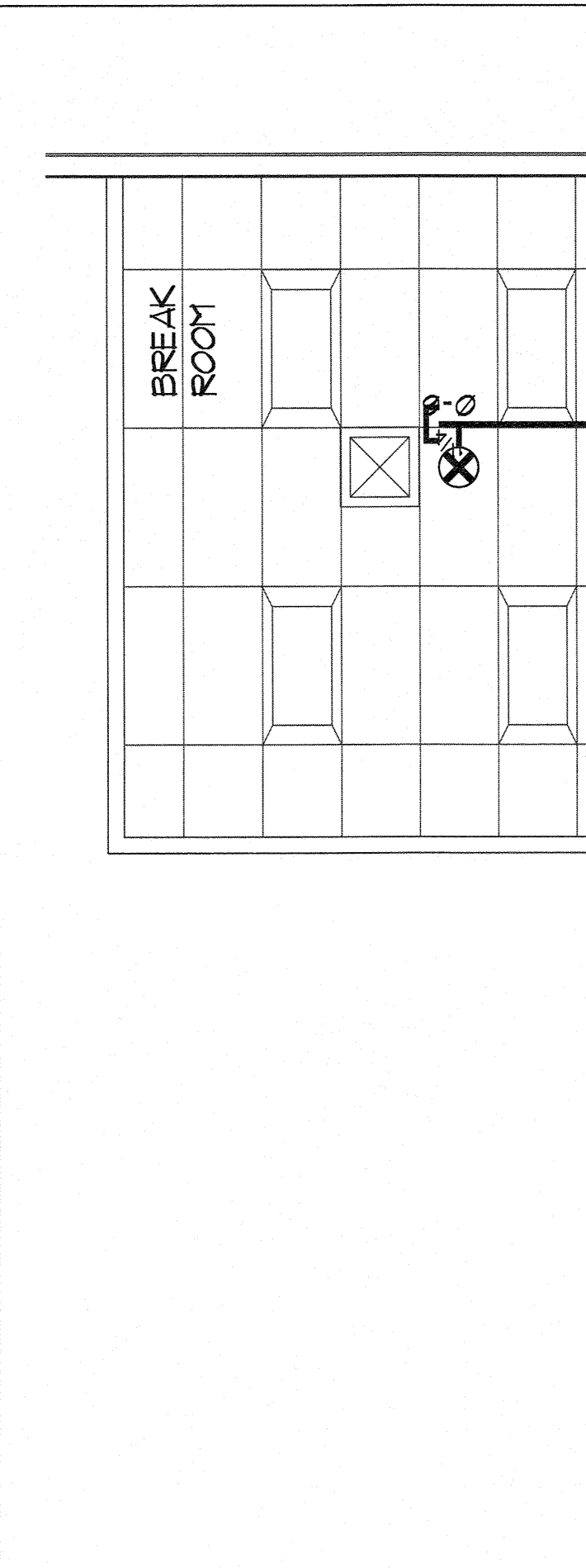
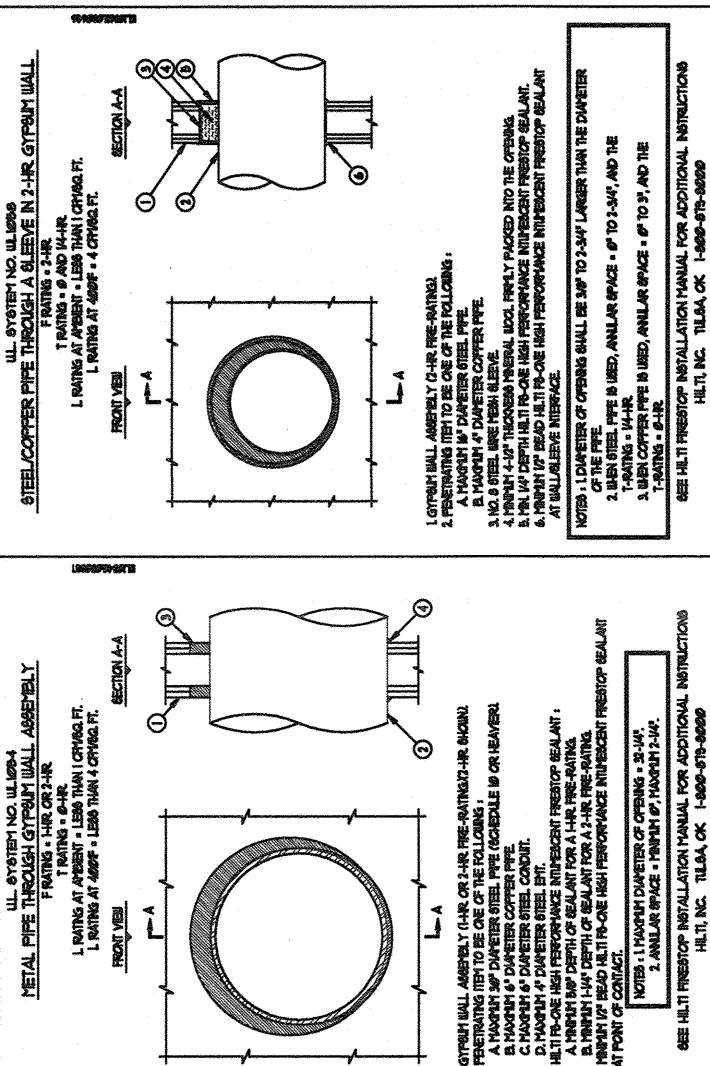
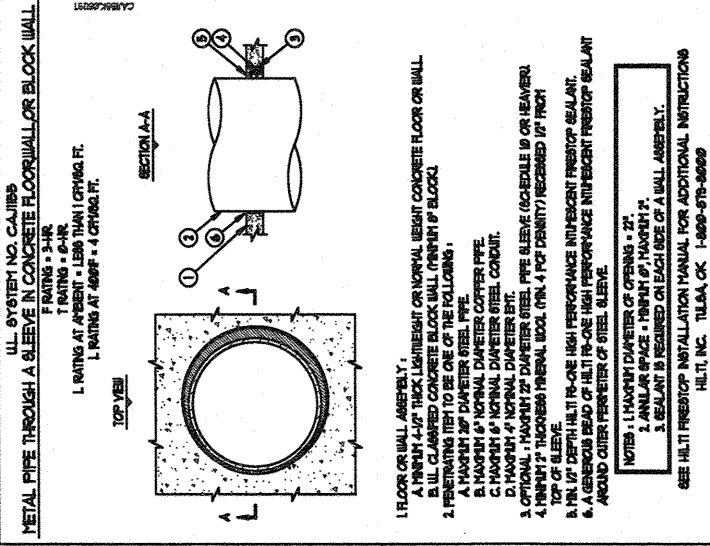
IX PLASTICS
2700 NE MCBAIN DRIVE
LEE'S SUMMIT, MISSOURI 64064

ADVANTAGE
FIRE PROTECTION SYSTEMS INC.
"We are your Advantage"
404B N.W. 11th Street
Blue Springs, MO. 64015
Tel. (816) 224-3400

NOTICE OF NON-RESPONSIBILITY

THIS DRAWING SHALL BE USED AS A CONSTRUCTION GUIDE ONLY. ADVANTAGE FIRE PROTECTION SYSTEMS, INC. ASSUMES NO RESPONSIBILITY FOR THE USE OF THIS DRAWING FOR STRUCTURAL OR ARCHITECTURAL PURPOSES IS NOT AUTHORIZED. THIS PRINT IS THE EXCLUSIVE PROPERTY OF:

ADVANTAGE FIRE PROTECTION SYSTEMS, INC.



GENERAL NOTES

1. THE SYSTEM DESIGN CRITERIA COMPLIES WITH THE REQUIREMENTS OF NFPA 13 2016 EDITION.
2. ALL PIPING SHALL CONFORM WITH THE REQUIREMENTS OF NFPA 13 2016 EDITION.
3. ALL FITTINGS SHALL CONFORM WITH THE REQUIREMENTS OF NFPA 13 2016 EDITION.
4. ALL HANGERS SHALL CONFORM TO THE REQUIREMENTS OF NFPA 13 2016 EDITION.
5. FITTINGS FOR 1" THRU 2" SHALL BE CAST IRON THREADED. FITTINGS FOR 2 1/2" THRU 4" PIPING ARE TO BE GROOVED OR WELDED OUTLETS.
6. LENGTHS OF PIPING 1" THRU 2" ARE SHOWN AS THREAD TO THREAD UNLESS NOTED AS: G - GROOVE OR C - CENTER. 2 1/2" THRU 4" PIPE LENGTHS ARE SHOWN AS CENTER TO CENTER UNLESS NOTED AS: G - GROOVE, W - WELD, F - FACE OR FLANGE OR T - THREAD.
7. ALL SECTIONS OF TRAPPED PIPING SHALL HAVE AUXILIARY DRAINS WHERE REQUIRED.
8. THE OWNER SHALL BE RESPONSIBLE FOR PROVIDING ADEQUATE HEAT TO PREVENT THE PIPING FROM FREEZING.
9. ALL SWITCHBOARDS, PANEL BOARDS, DISTRIBUTION BOARDS AND MOTOR CONTROL CENTERS SHALL BE PROTECTED FROM DAMAGE BY OTHERS.

CONSTRUCTION: EXISTING CONSTRUCTION

PIPE TYPE:
SCREWED 2" AND SMALLER TO BE SCH. 40 PIPE. WELDED 2" AND LARGER TO BE SCH. 10 PIPE.

DESIGN CRITERIA:
PER NFPA 13, LIGHT HAZARD, 0.10 GPM/SGFT FOR 1500 SQFT OPERATING
MAX 225 SQFT/HEAD SPACING + 100 GPM FOR HOSE ALLOWANCE
NOTE: REDUCE OPERATING AREA FOR QUICK RESPONSE SPRINKLER HEADS PER NFPA 13.
ALL SPRINKLERS TO BE QUICK RESPONSE TYPE, APPROVED FOR SPECIFIC OCCUPANCY.

Sprinkler Head Summary

Symbol	Count	NPT	Orif.	Make	Model	Finish	Style	Temp.	K=	SIN
⊙	6	3/4"	3/4"	VIKING	EC/REGC	CHROME	EXTENDED COVERAGE PENDANT	200°	112K	VK534
●	3	1/2"	1/2"	VIKING	MICROFAST	CHROME	CHROME PENDANT	200°	5.6K	VK3071

Symbols

Symbol	Description
⊙	Hydraulic Reference Points
⊖	Elev. Below Top of Steel
⊕	Elev. Above Finished Floor
⊕	Elev. of Top of Steel
⊕	Ceiling Height
⊕	Denotes Hanger Location
⊕	Rise up or down
⊕	ALL PIPE CUTS ARE CENTER TO CENTER

