

[illegible]

RETAIL STORE

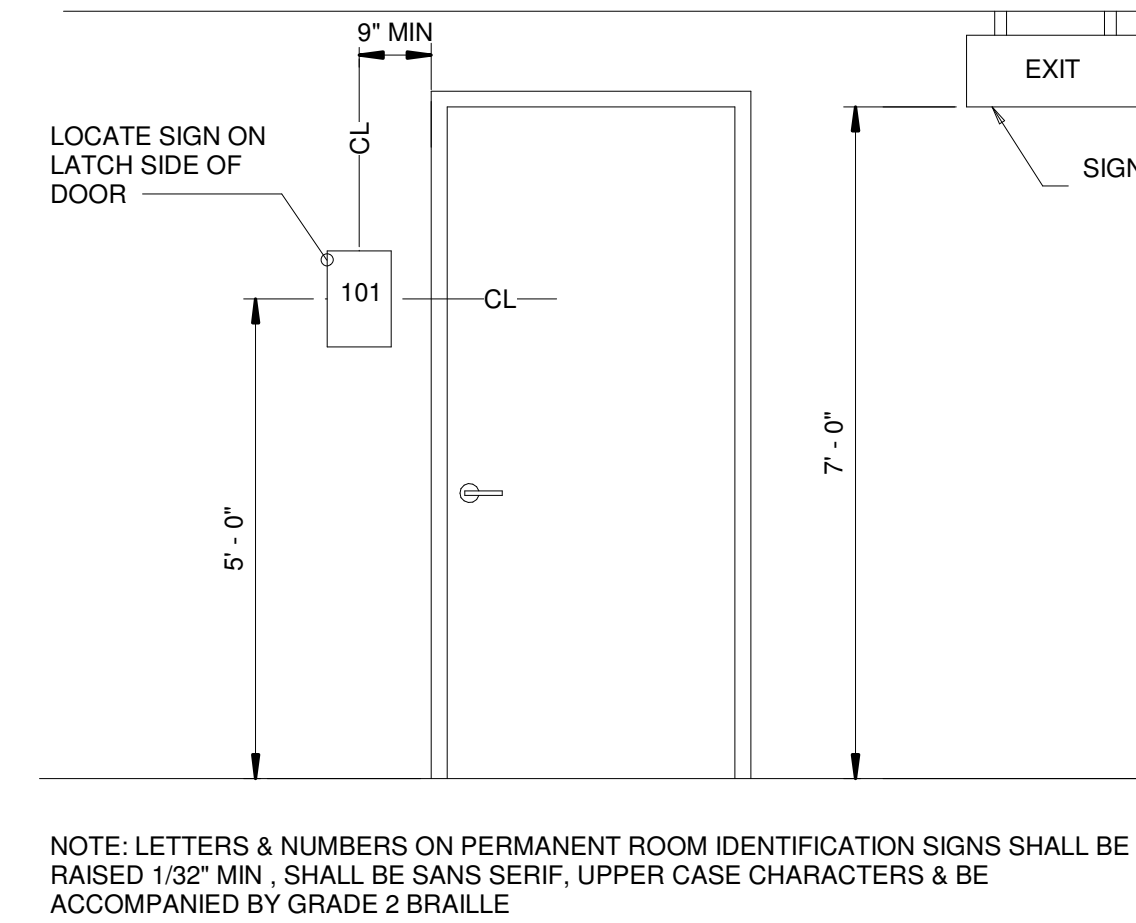
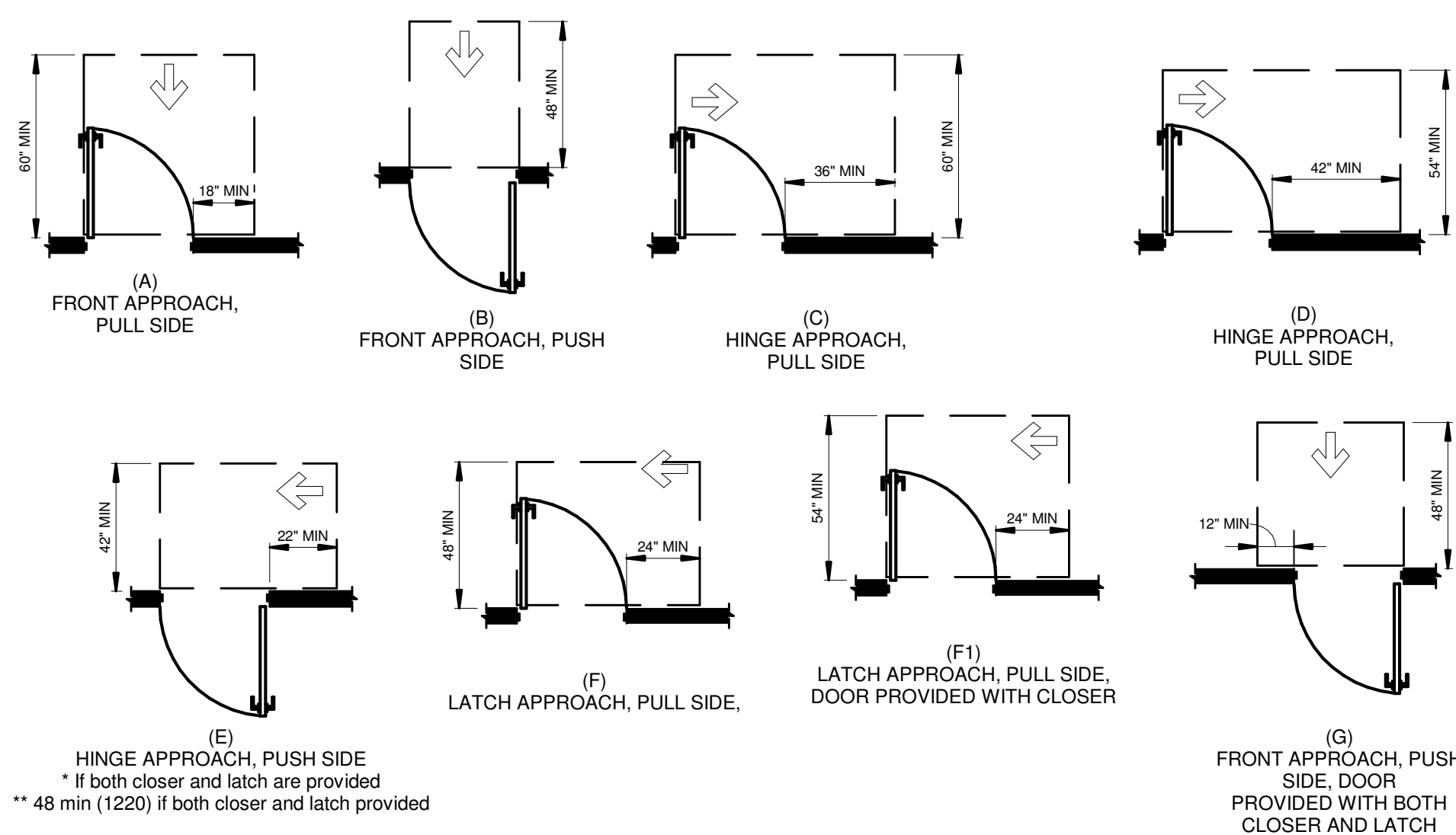
33680 NE AKIN DR, UNIT:134
LEES SUMMIT MISSOURI 64063RB ARCHITECTURE ENGINEERING
CONSTRUCTION

RB ARCHITECTURE ENGINEERING
CONSTRUCTION
COPYRIGHT
THESE PLANS ARE THE PROPERTY OF
RB ARCHITECTURE ENGINEERING
CONSTRUCTION. REPRODUCTION OF
THESE PLANS IN WHOLE OR PART OR
THE PREPARATION OF DERIVATIVE
WORKS THEREOF WITHOUT THE
EXPRESSED WRITTEN PERMISSION OF
RB ARCHITECTURE ENGINEERING IS
ENTIRELY PROHIBITED.

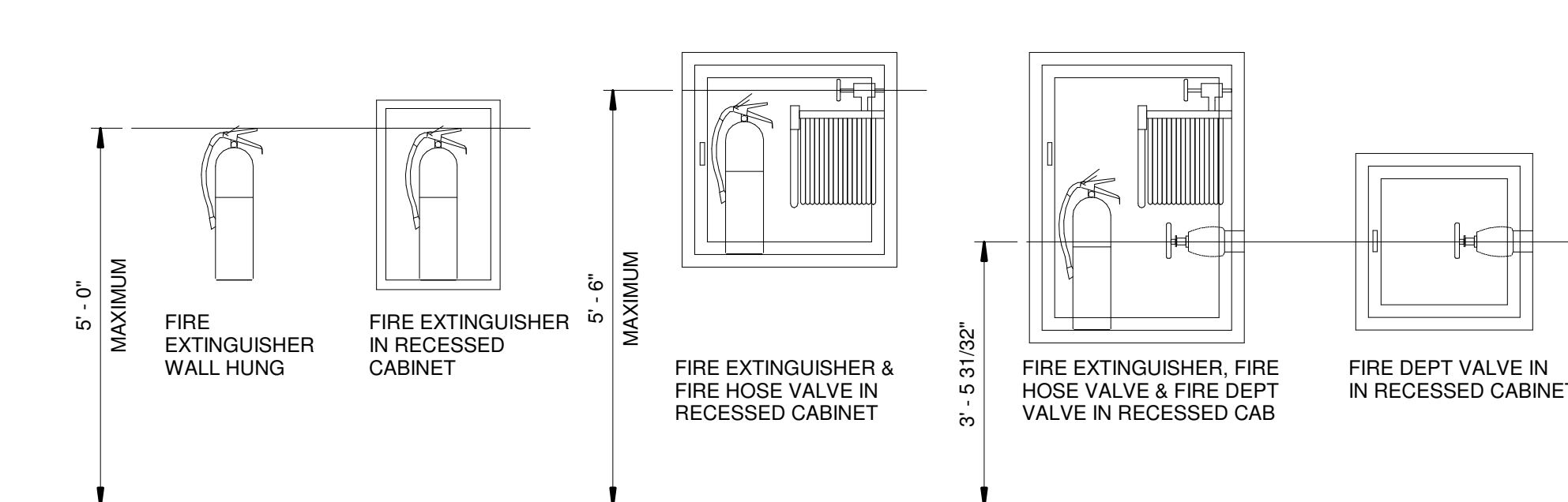
FIXTURES &
 ACCESSORIES
 CLEARANCES

0G2

GROUP	SHEET NO
-------	----------



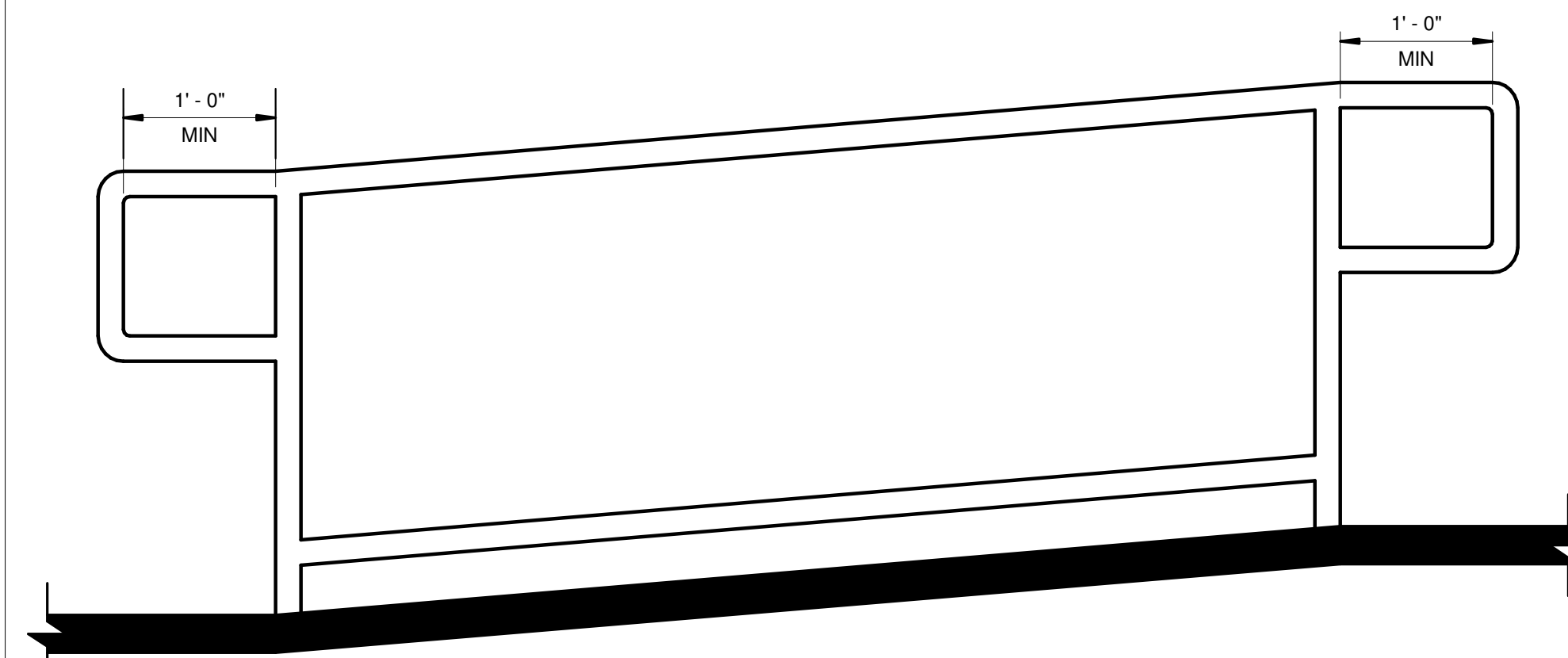
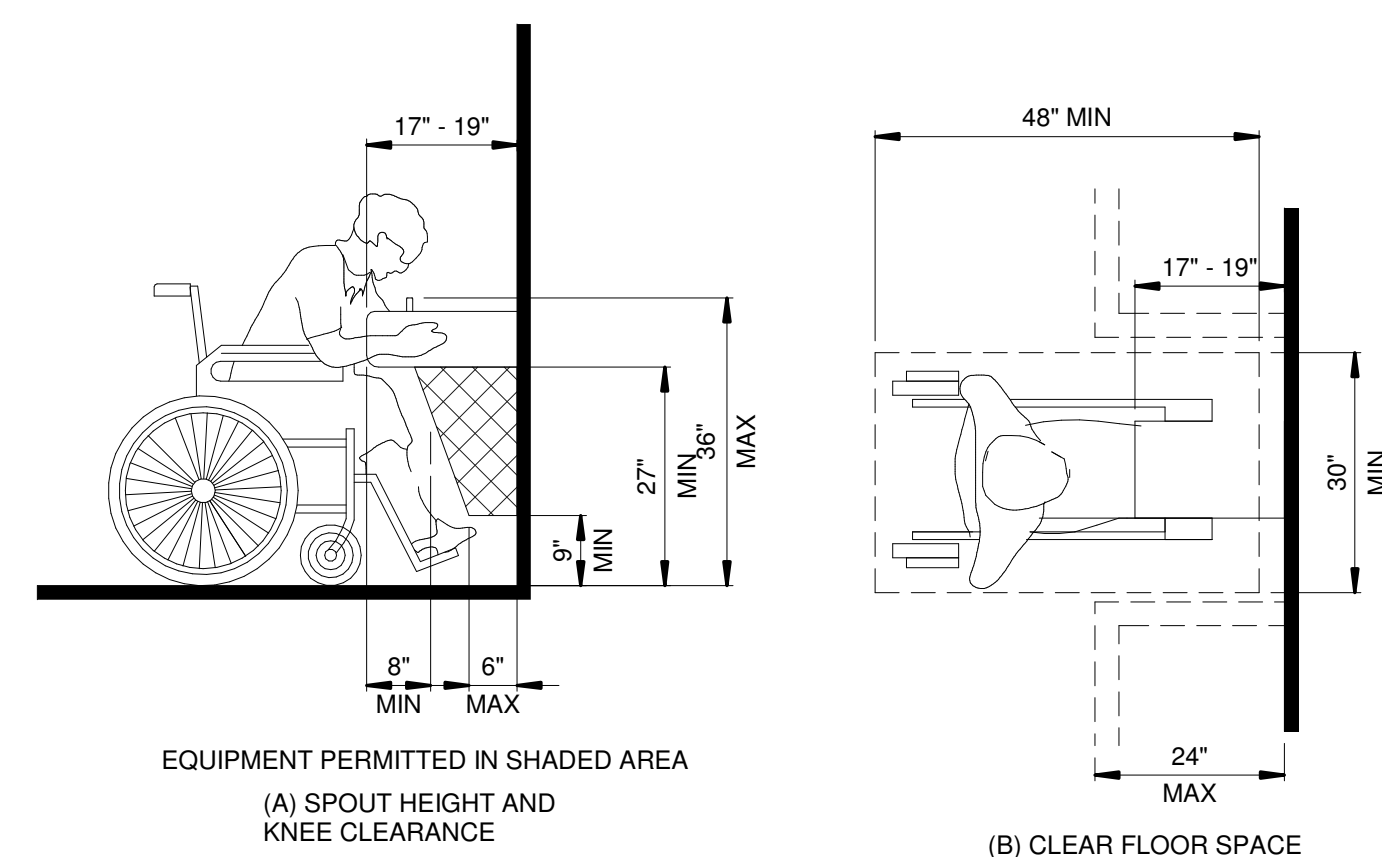
10 ROOM AND SPACE SIGNAGE2
0G2 NOT TO SCALE



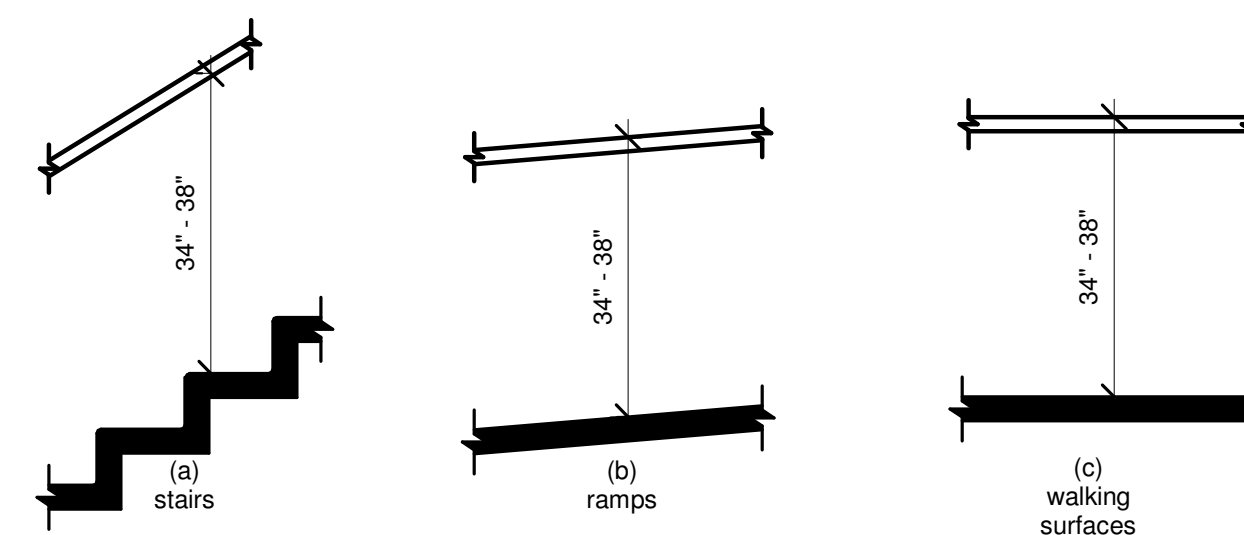
11 FIRE PROTECTION EQUIPMENT2
0G2 NOT TO SCALE

ACCESSIBLE MANEUVERING CLEARANCE AT MANUAL SWINGING DOORS AND GATES²

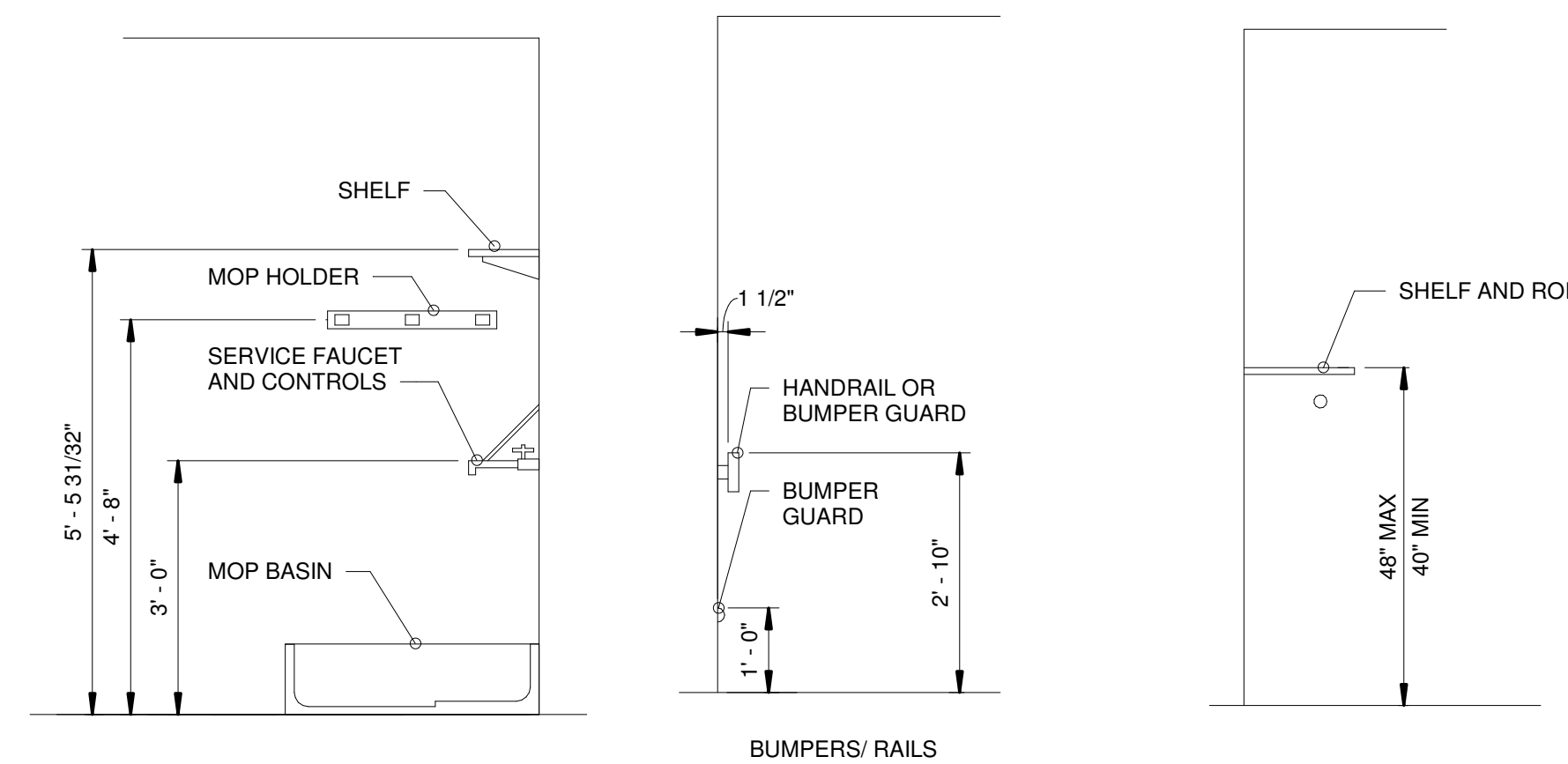
1
OG2



3 ACCESSIBLE HANDRAIL
0G2 EXTENSION2
NOT TO SCALE



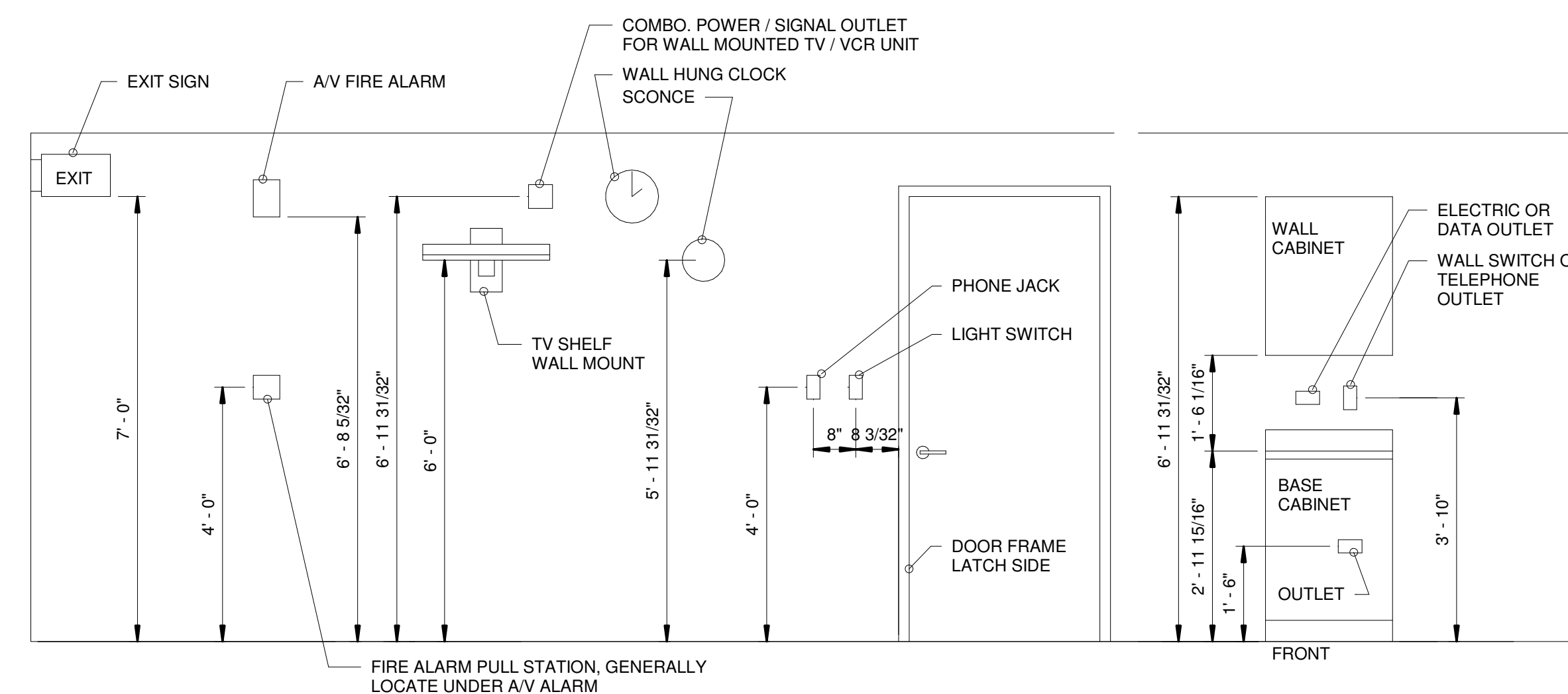
4 ACCESSIBLE HANRAIL HEIGHT2
0G2 NOT TO SCALE



6 MOP SINK2
0G2 NOT TO SCALE

8 BUMPERS/ RAILS2
0G2 NOT TO SCALE

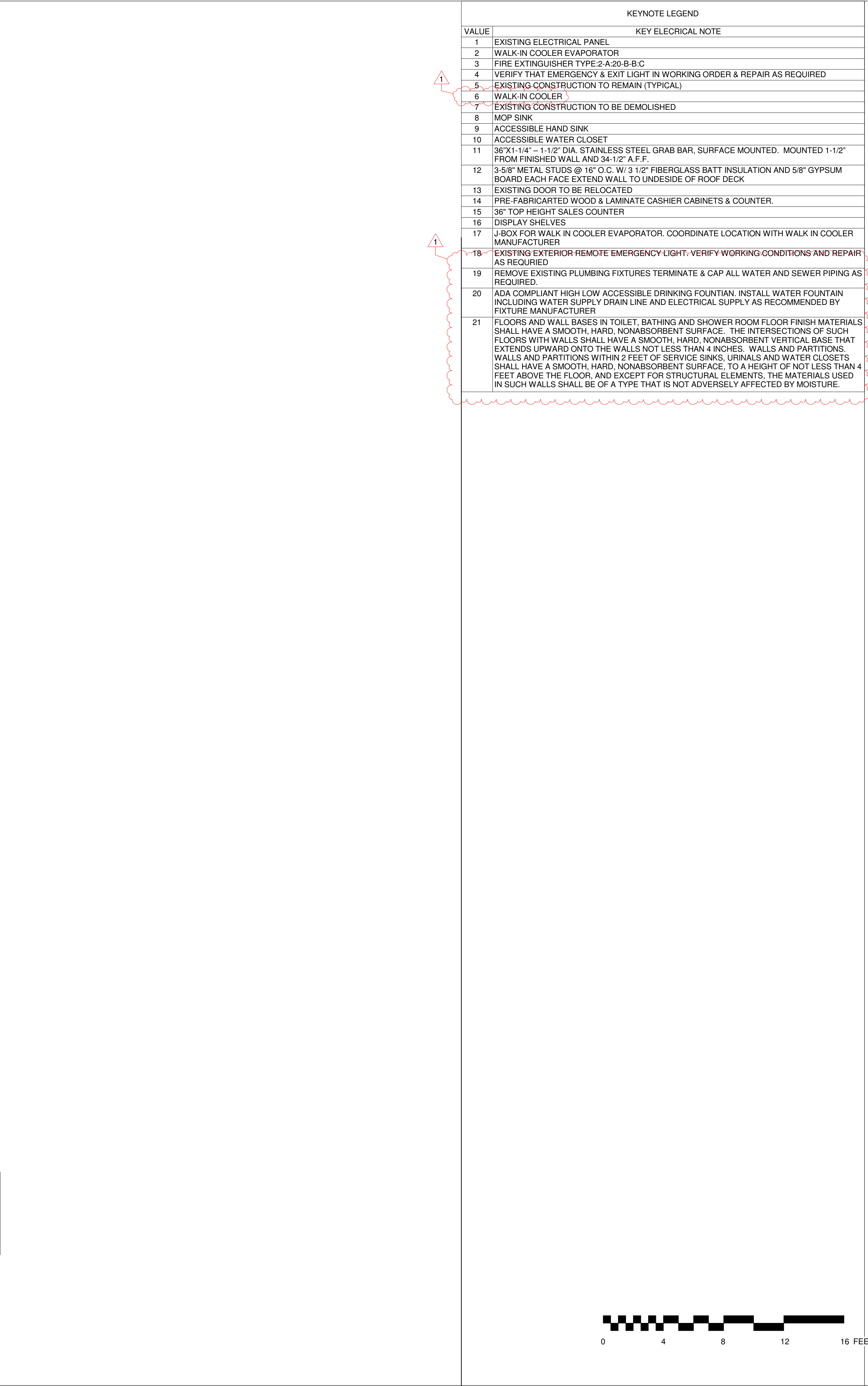
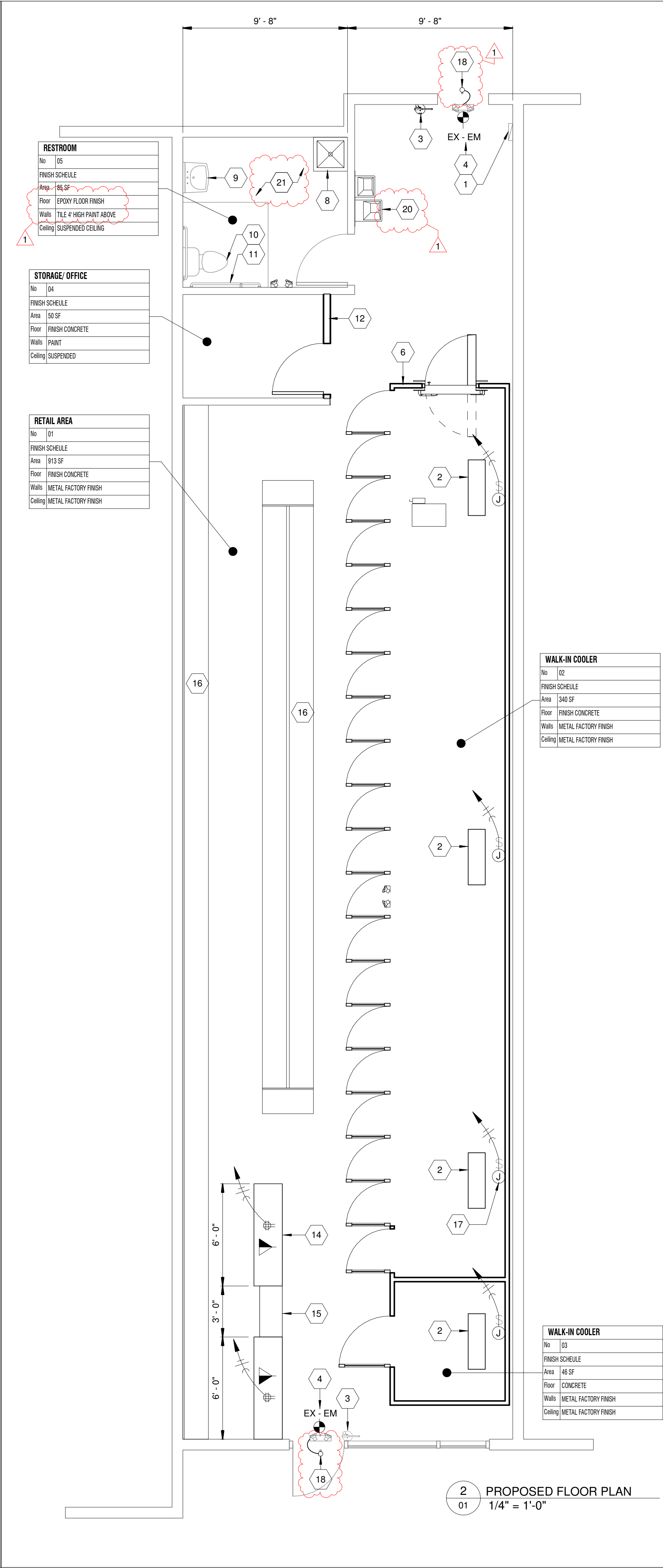
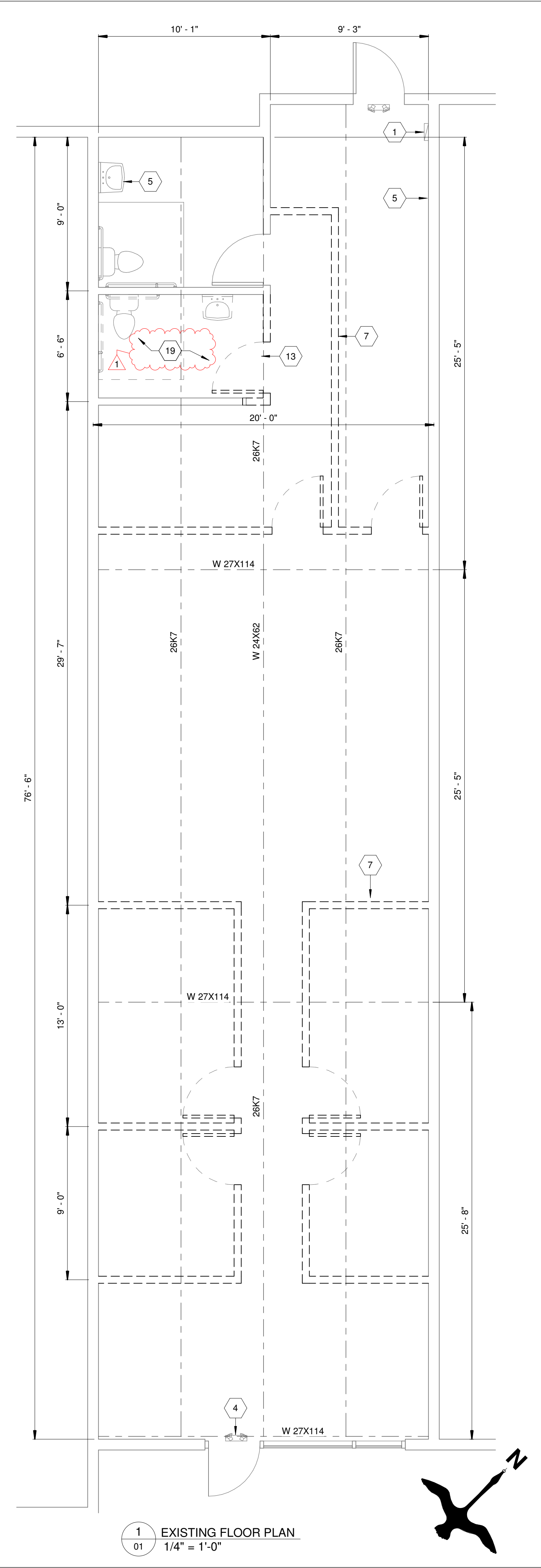
7 SHELVES2
0G2 NOT TO SCALE



9 ELECTRICAL/ CONTROL DEVICES2
0G2 NOT TO SCALE

2 ACCESSIBLE DRINKING WATER
FOUNTAIN2
0G2 NOT TO SCALE

2
0G2



RELEASED FOR CONSTRUCTION
As Noted on Plans Review
Development Services Department
Lee's Summit, Missouri
10/31/2024

RB ARCHITECTURE ENGINEERING CONSTRUCTION
11661 COLLEGE BLVD STREET, OVERLAND PARK KANSAS 66211
TEL: (913) 375-7659 EMAIL: rlad.baghdad@yahoo.com

STATE OF MISSOURI
RAD BAGHDAD
10/31/2024
REGISTERED ARCHITECT

RETAIL STORE
3680 NE AKIN DR, UNIT:134
LEES SUMMIT, MISSOURI

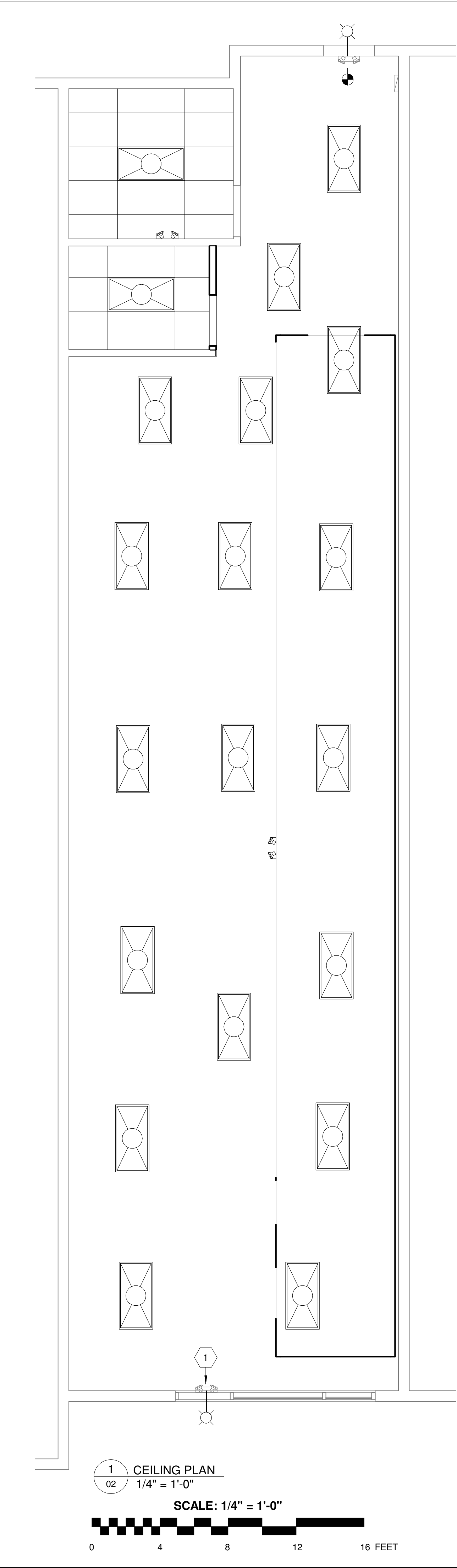
RB ARCHITECTURE ENGINEERING CONSTRUCTION
COPYRIGHT
THESE PLANS ARE THE PROPERTY OF RB ARCHITECTURE ENGINEERING CONSTRUCTION. NO PART OF THESE PLANS IN WHOLE OR PART OR THE PREPARATION OF DERIVATIVE WORKS THEREOF WITHOUT THE EXPRESSED WRITTEN PERMISSION OF RB ARCHITECTURE ENGINEERING IS ENTIRELY PROHIBITED.

PLANS

01

GROUP SHEET NO.

10/31/2024 12:00:21 PM



KEYNOTE LEGEND

VALUE	KEY ELECTRICAL NOTE
1	VERIFY THAT EMERGENCY & EXIT LIGHT IN WORKING ORDER & REPAIR AS REQUIRED
2	3 HORSE POWER 1 PH WALK-IN COOLER CONDENSING UNIT MOUNTED ON ROOF
3	3#8 AND 1#8 GND IN 3/4" CONDUIT
4	30 AMP, 1 POLE, 120V NON FUSED DISCONNECT SWITCH IN NEMA 3R ENCLOSURE
5	EXISTING HVAC RTU
6	125-VOLT, SINGLE-PHASE, 15- OR 20-AMPERE-RATED WEATHER PROOF RECEPTACLE FOR RTU LOCATED BY DISCONNECT SWITCH

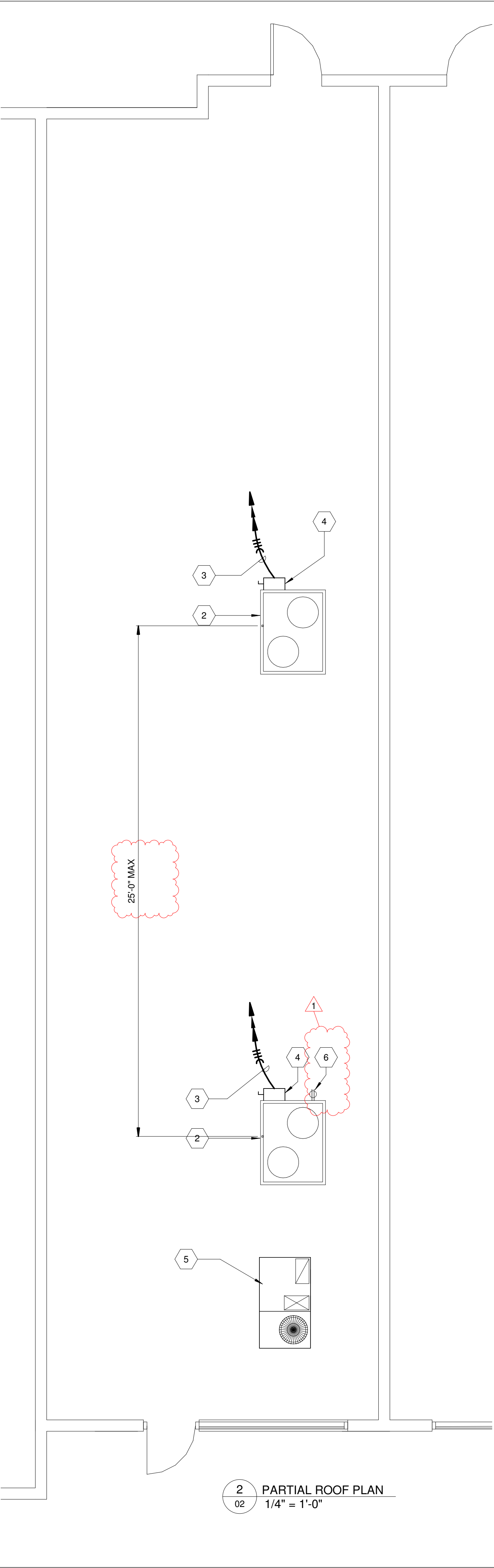
OUTDOOR AIR VENTILATION SCHEDULE Copy 1

Room Number	Room Name	Area	OCCUPANT DENSITY #/1000 S.F.	NO. OF TOILET FIXTURE	EXHAUST AIRFLOW RATE CFM	CFM/ PERSON	CFM/ S.F.	OCCUPANT	VENTILATION BASED ON OCCUPANT	VENTILATION BASED ON AREA	TOTAL FRESH AIR	REMARKS
01	RETAIL AREA	913 SF	15	0	0	7.5	0.12	14	103	109.6	212	
02	WALK-IN COOLER	340 SF	0	0	0	0	0.06	0	0	20.4	20	
03	WALK-IN COOLER	46 SF	0	0	0	0	0.06	0	0	2.7	3	
04	STORAGE/ OFFICE	50 SF	0	0	0	0	0.12	0	0	6.0	6	
05	RESTROOM	85 SF	0	1	50	0	0	0	0	0.0	50	

NOTE:
1. ADJUST HVC UNIT TO ALLOW A MINIMUM OF 291 CFM OF FRESH AIR
2. TEST EXISTING HVAC SYSTEM AND REPAIR AS REQUIRED.

CEILING LEGEND

DIFFUSER	2X4 LIGHT FIXTURE	EMERGENCY EXIT LIGHT	HORN/STROBE FIRE ALARM DEVICE
RETURN AIR	OUTDOOR LIGHT FIXTURE	EMERGENCY EXIT LIGHT/COMBO	FIRE ALARM MANUAL PULL STATION
EXHAUST DUCT UP TO ROOF	REMOTE EXIT LIGHT FIXTURE	6" RECESSED CAN LIGHT	STROBE FIRE ALARM DEVICE
		LIGHT SWITCH	SMOKE DETECTOR
		EXIT LIGHT	



RELEASED FOR CONSTRUCTION
As Noted on Plans Review
Development Services-Department
Lee's Summit, Missouri
10/31/2024

RB ARCHITECTURE ENGINEERING
CONSTRUCTION

11661 COLLEGE BLVD STREET, OVERLAND PARK KANSAS 66211
TEL: (913) 375-7659 EMAIL: riad.baghdadi@yahoo.com

STATE OF MISSOURI
RIAD BAGHDADI
10/31/2024
REGISTERED ARCHITECT

No. 1

Date 10-22-2024

Description REVISED PER CITY COMMENTS

RB ARCHITECTURE ENGINEERING
CONSTRUCTION

THESE PLANS ARE THE PROPERTY OF RB ARCHITECTURE ENGINEERING CONSTRUCTION. NO PART OF THESE PLANS IN WHOLE OR PART OR WORKS THEREOF WITHOUT THE EXPRESSED WRITTEN PERMISSION OF RB ARCHITECTURE ENGINEERING IS ENTIRELY PROHIBITED.

RETAIL STORE
3680 NE AKIN DR, UNIT:134
LEES SUMMIT, MISSOURI

GROUP

02

SHEET NO.