

## PROJECT DESCRIPTION

## ABBREVIATIONS

## SYMBOLS

## GENERAL NOTES

ROOM NUMBER	NAME	AREA	OCCUPANT LOAD FACTOR	OCCUPANT LOAD	REMARKS
01	RETAIL AREA	913 SF	60	15	
02	WALK-IN COOLER	340 SF	300	1	
03	WALK-IN COOLER	46 SF	300	0	
04	STORAGE/ OFFICE	50 SF	300	0	
05	RESTROOM	85 SF	0		
		1434 SF		17	

GENERAL CONTRACTOR NOTES:

PROJECT LOCATION

1 LOCATION  
00 NOT TO SCALE

N

The image is a detailed architectural floor plan of a building. The plan shows a complex arrangement of rooms, corridors, and service areas. A specific area, located in the lower-left portion of the plan, is highlighted with a light blue fill. This highlighted area consists of several interconnected rectangular spaces, including what appears to be a large open hall or auditorium, and several smaller rooms or offices. The plan also shows various structural elements like walls, doors, and windows, as well as some furniture or equipment in certain rooms. The overall layout suggests a multi-story building with a variety of functional spaces.

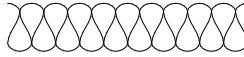
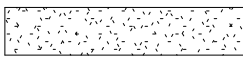
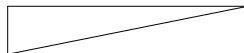
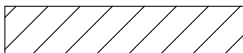

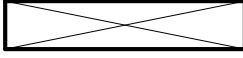
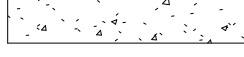
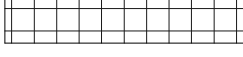

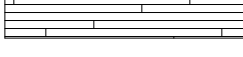

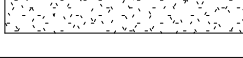

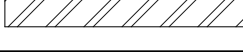
WH	WATER HEATER
WSCT	WAINSCOT
WT	WEIGHT
WWF	WELED WIRE FABRIC

---

(34)

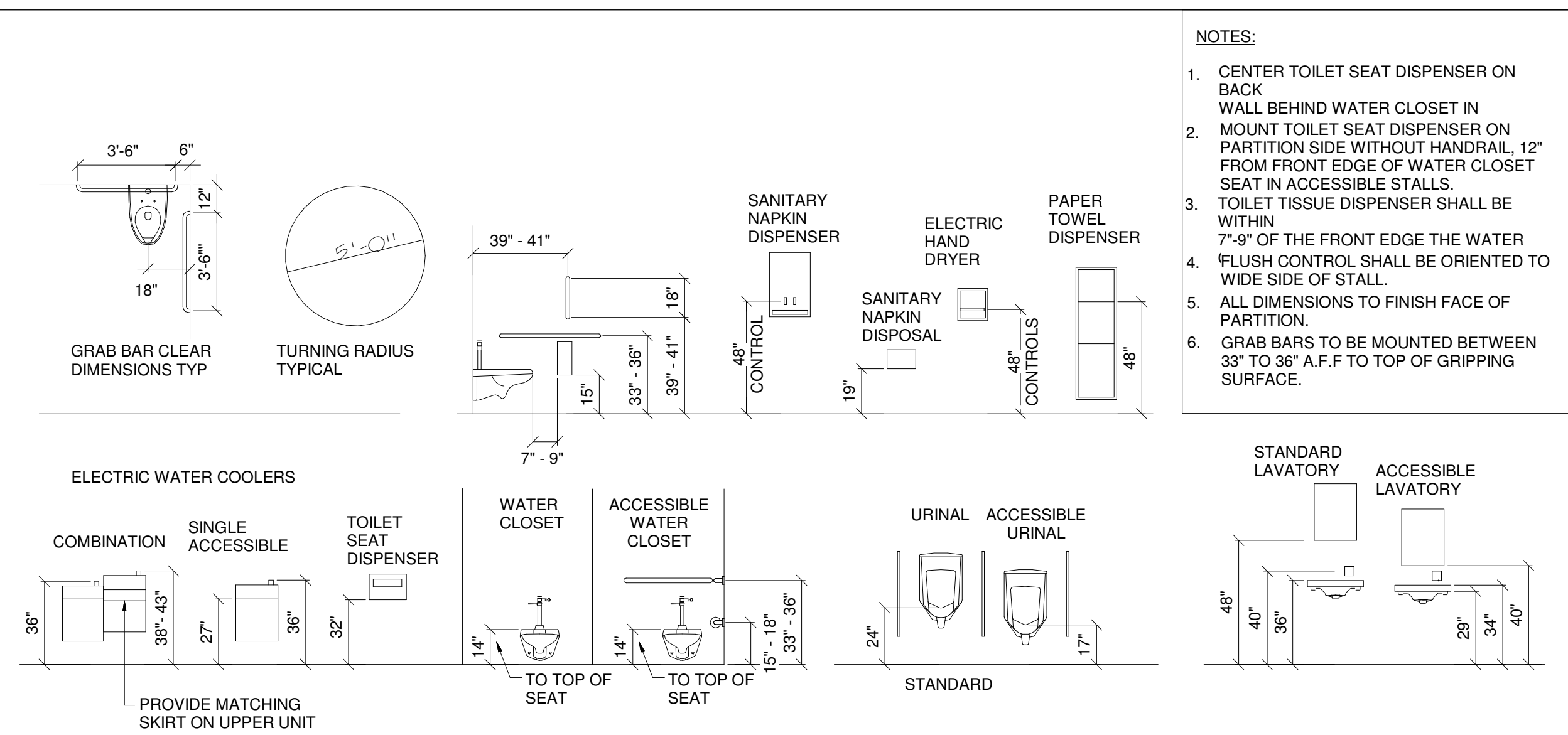
EXISTING RETAIL STRIP DEVELOPMENT

TENANT SPACE LOCATION

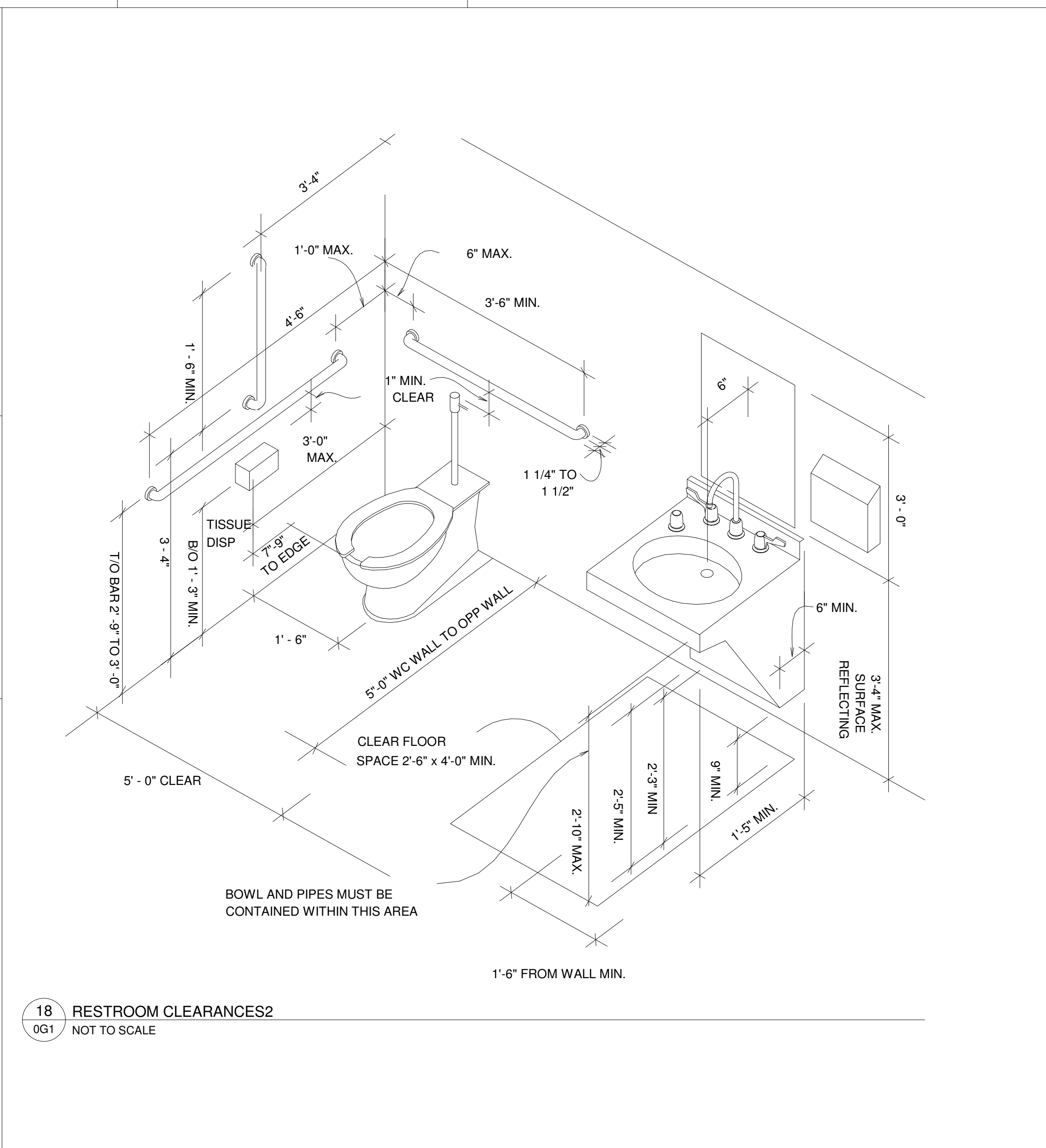
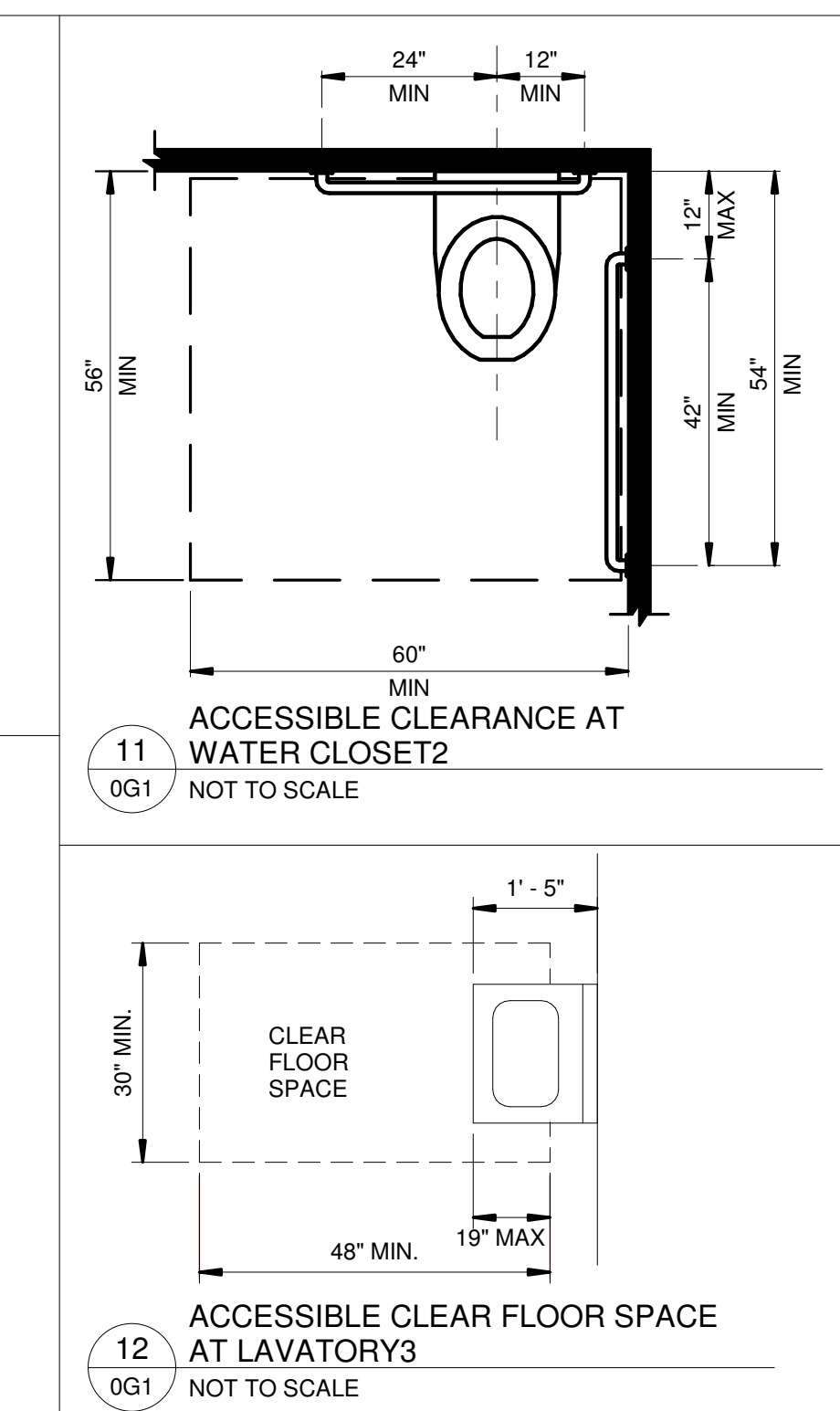
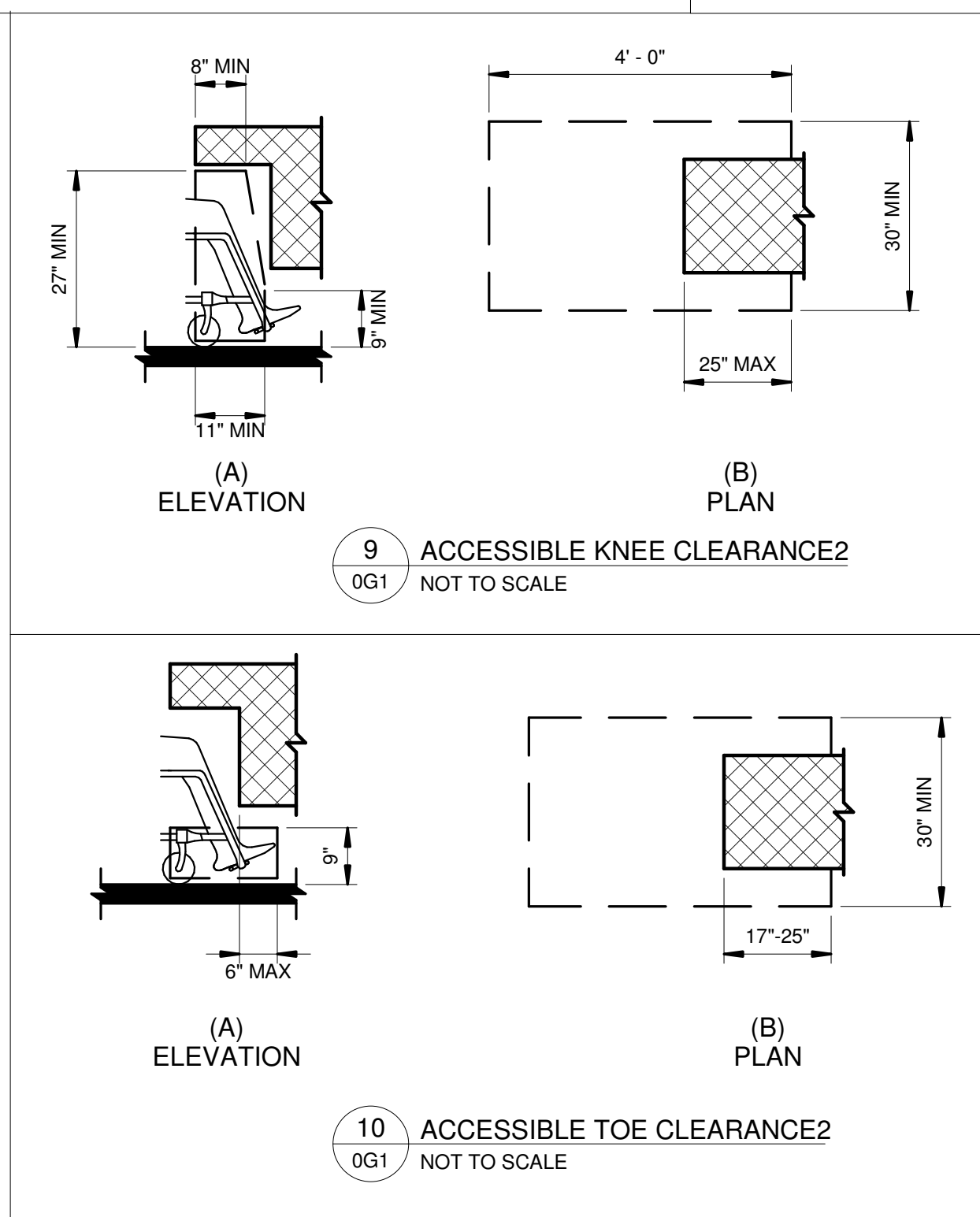
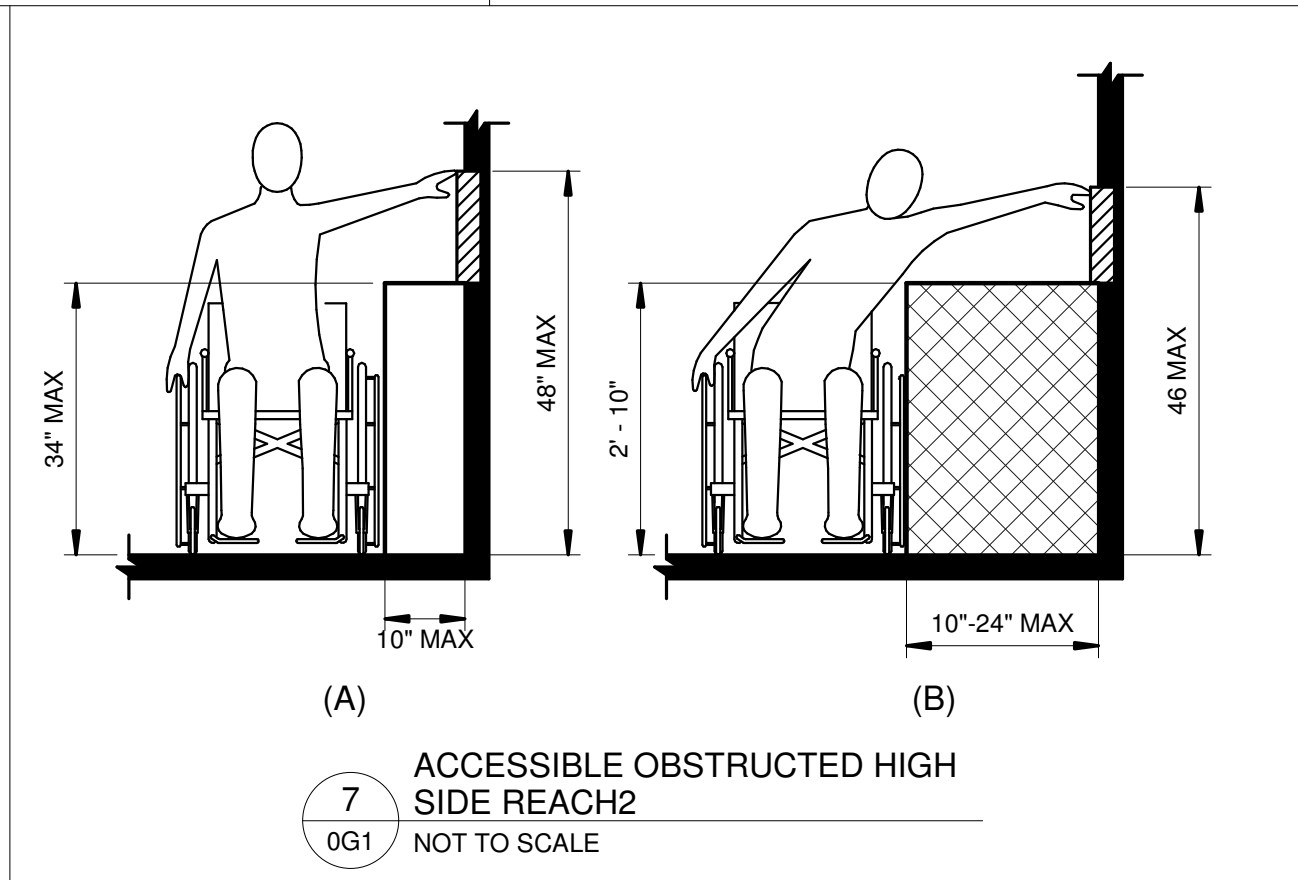
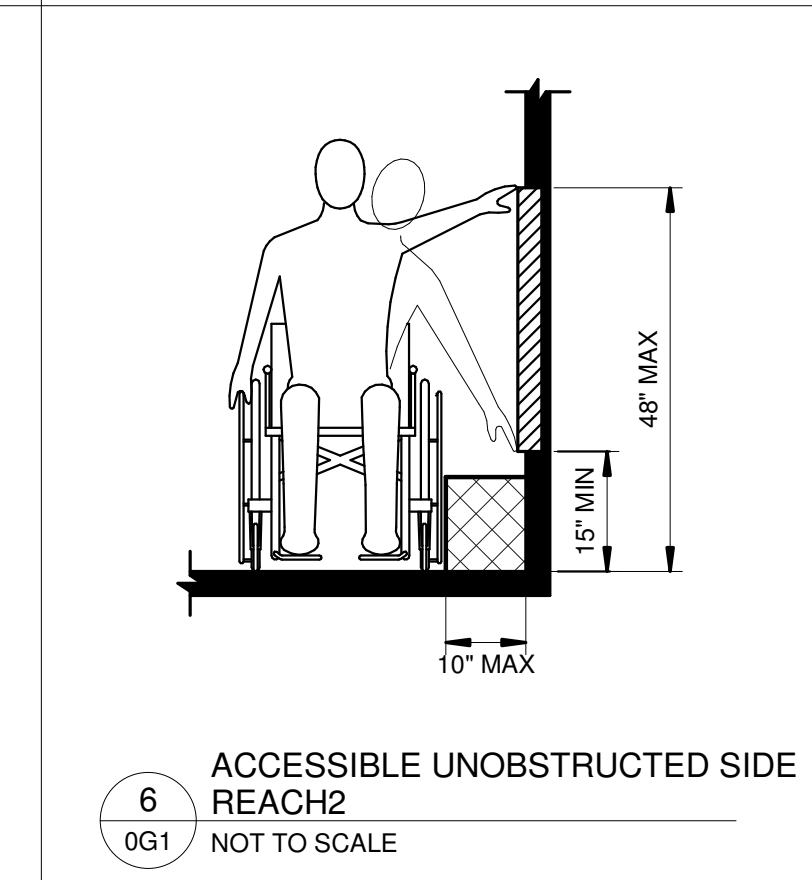
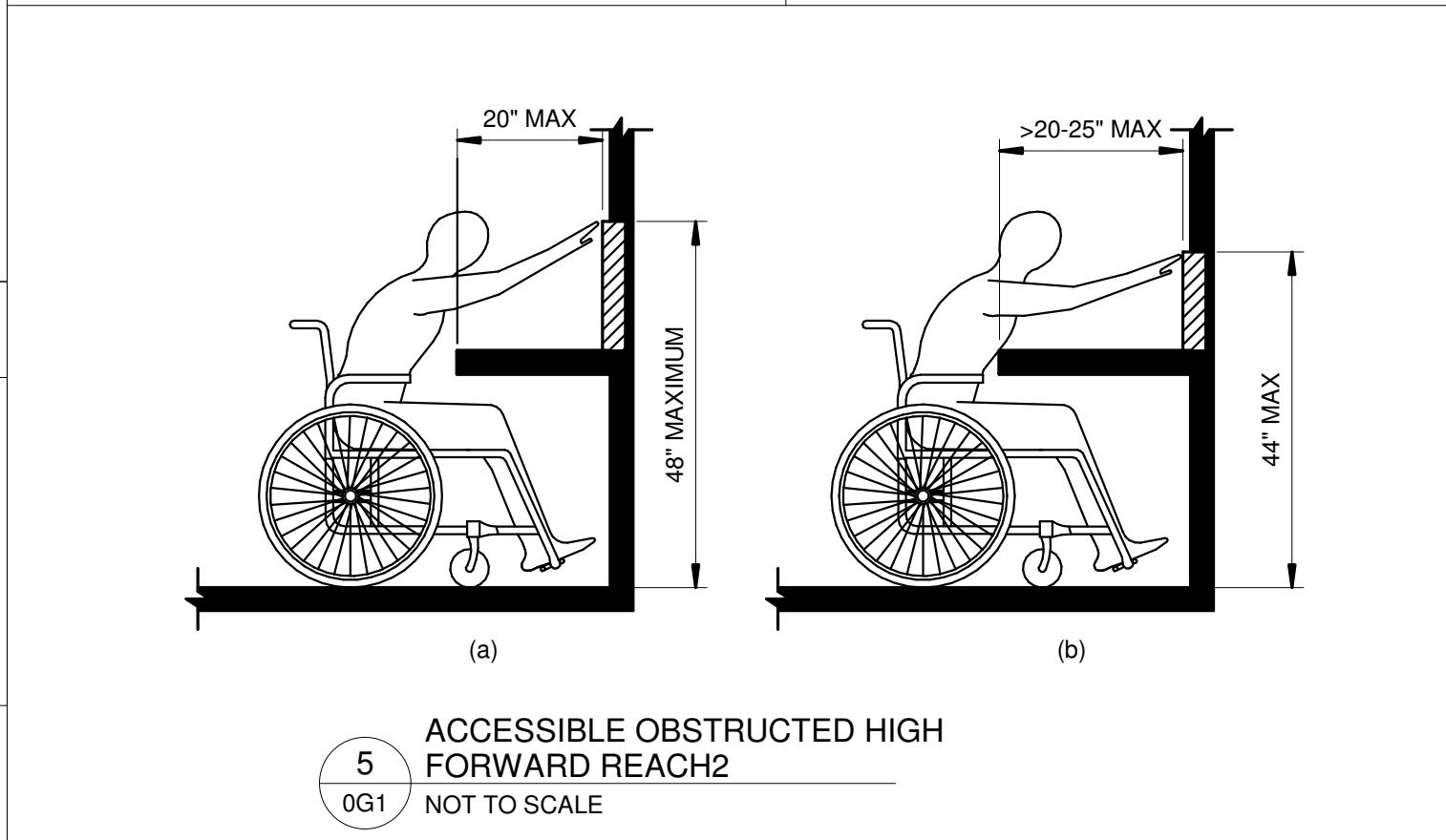
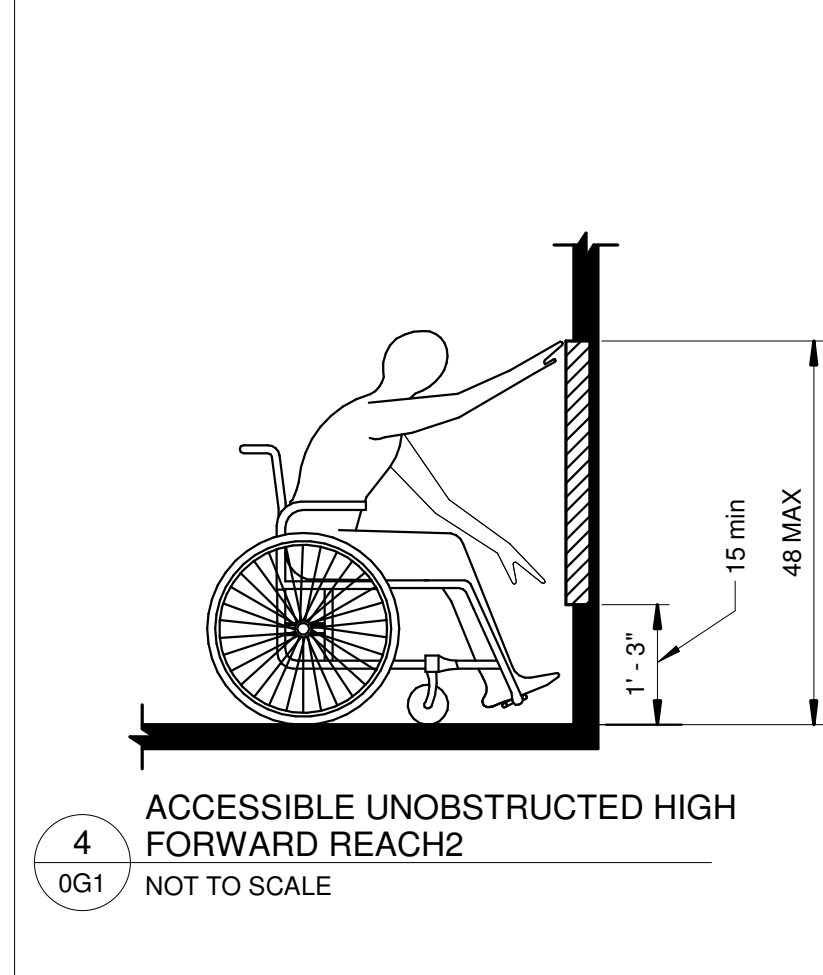
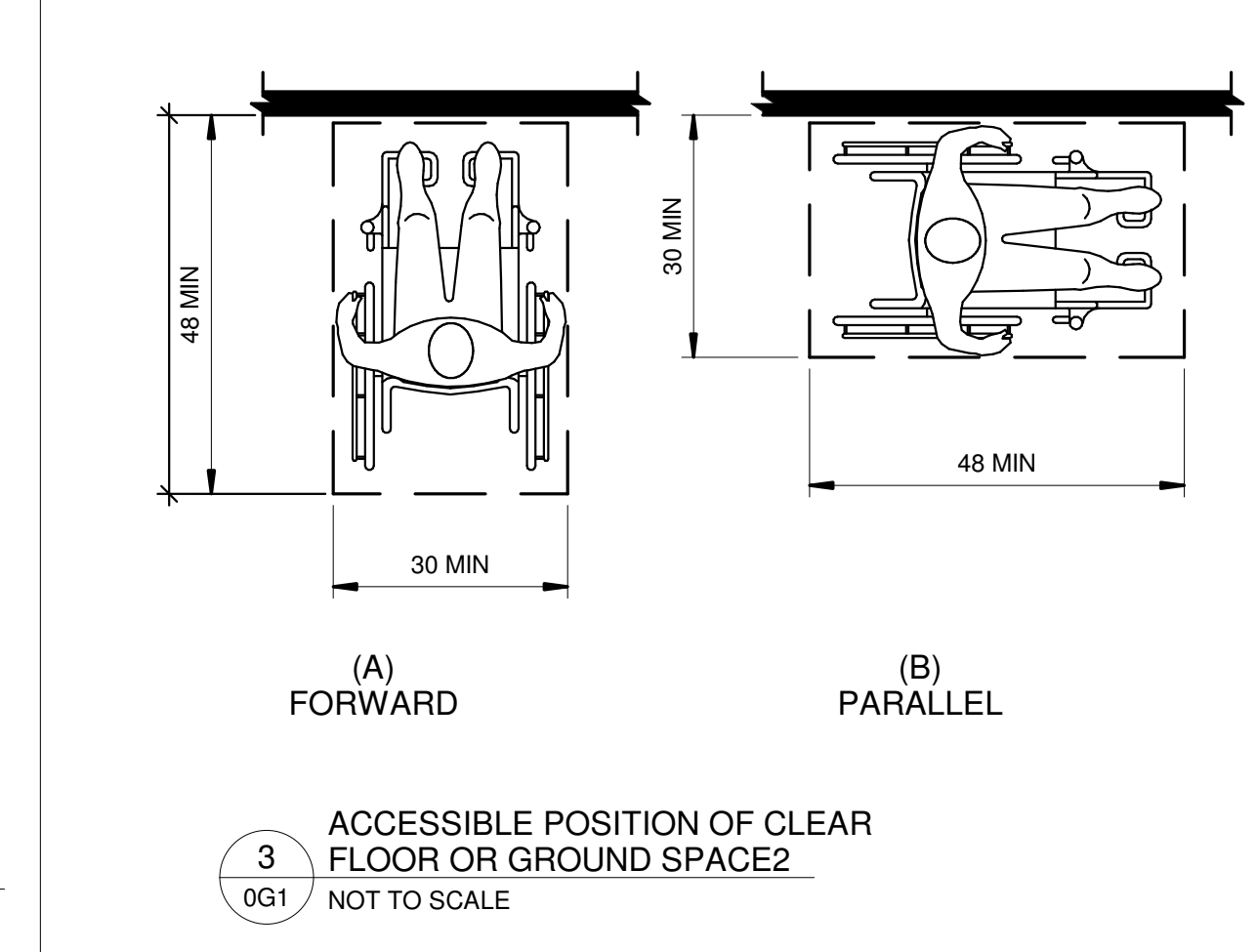
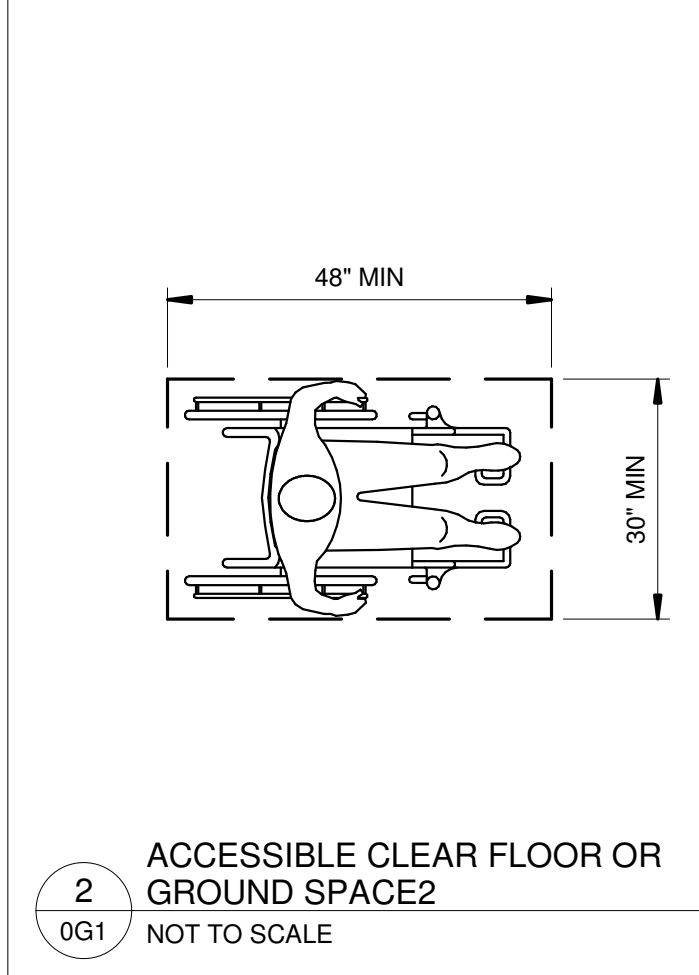
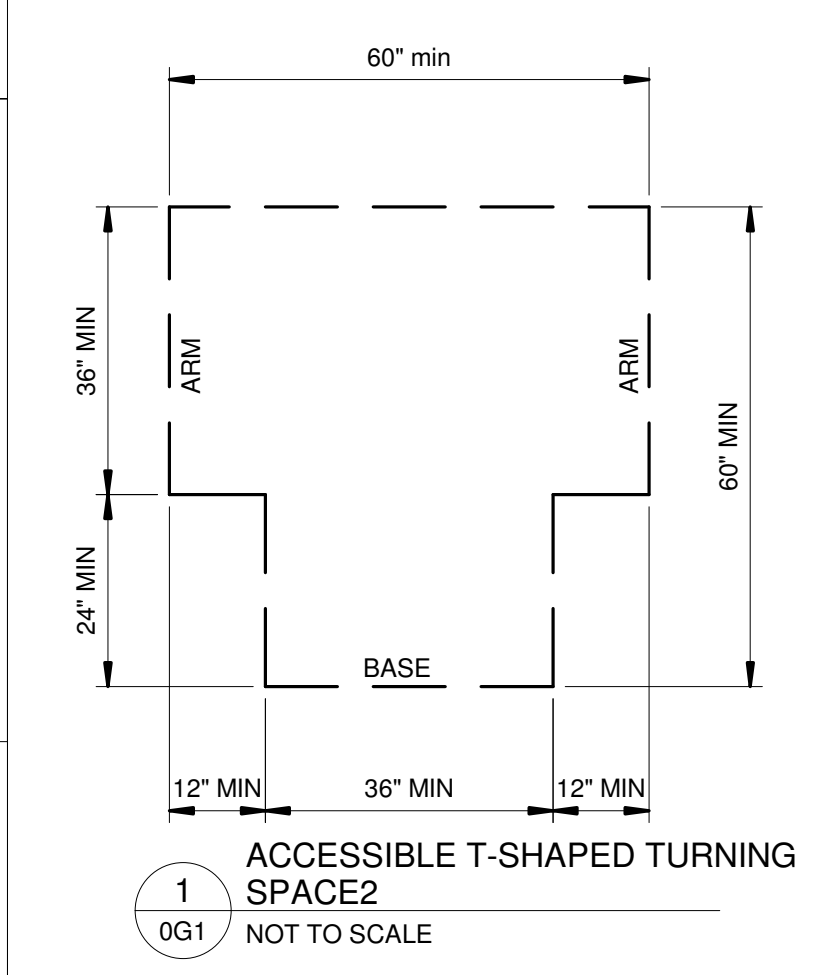
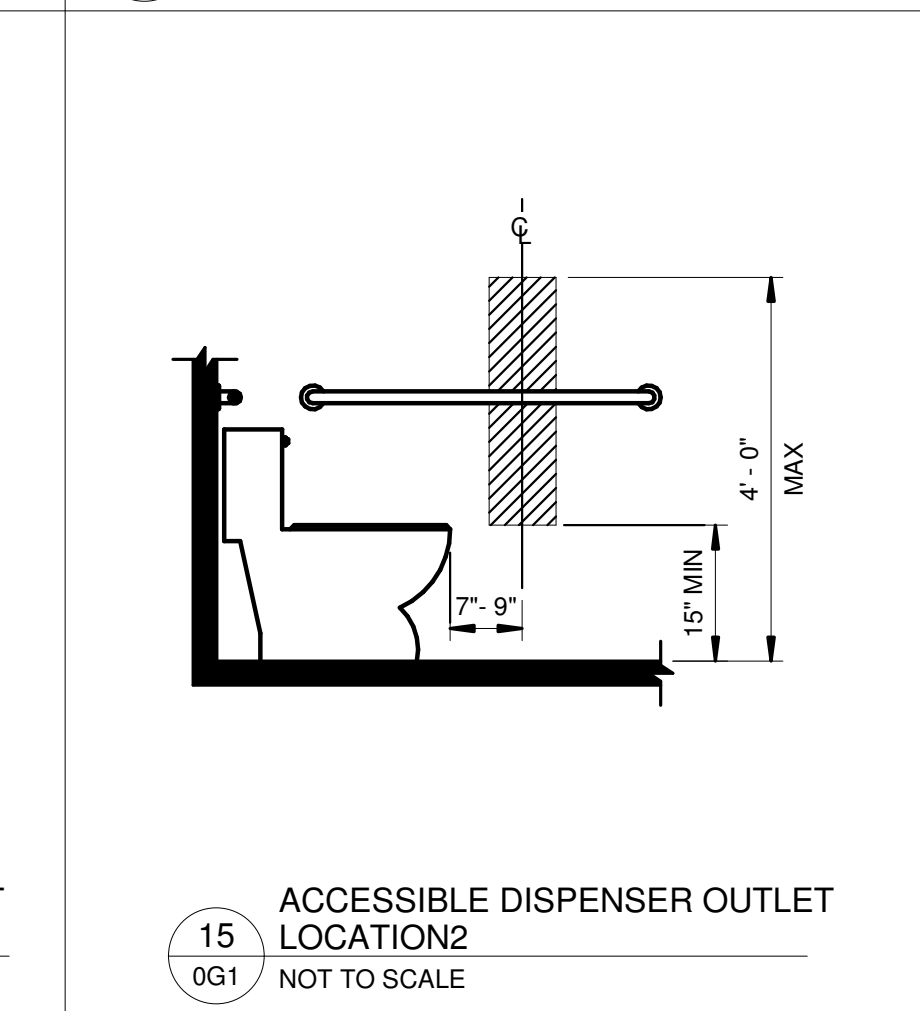
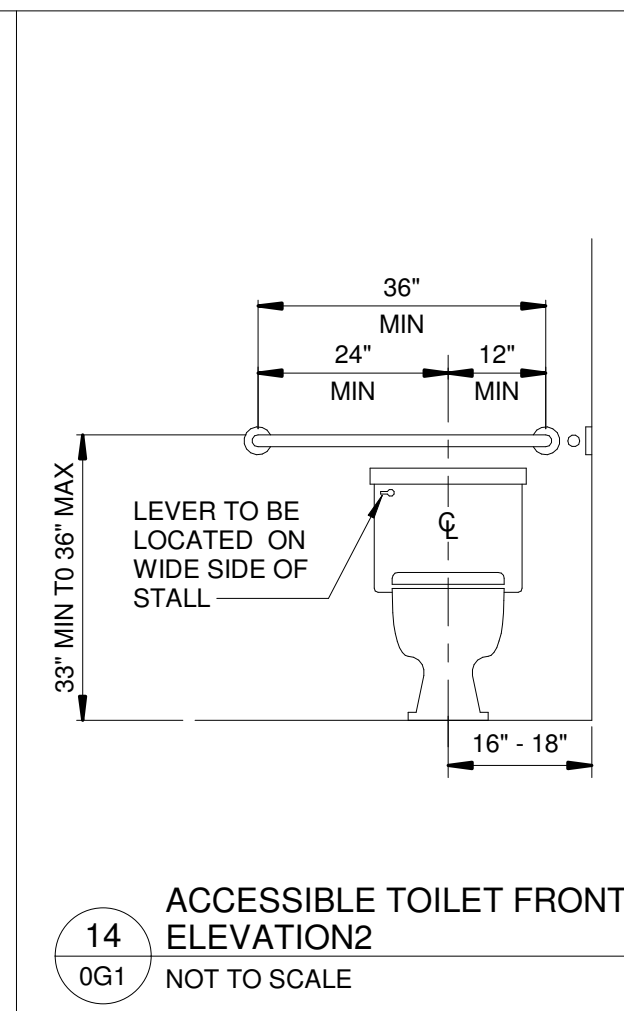
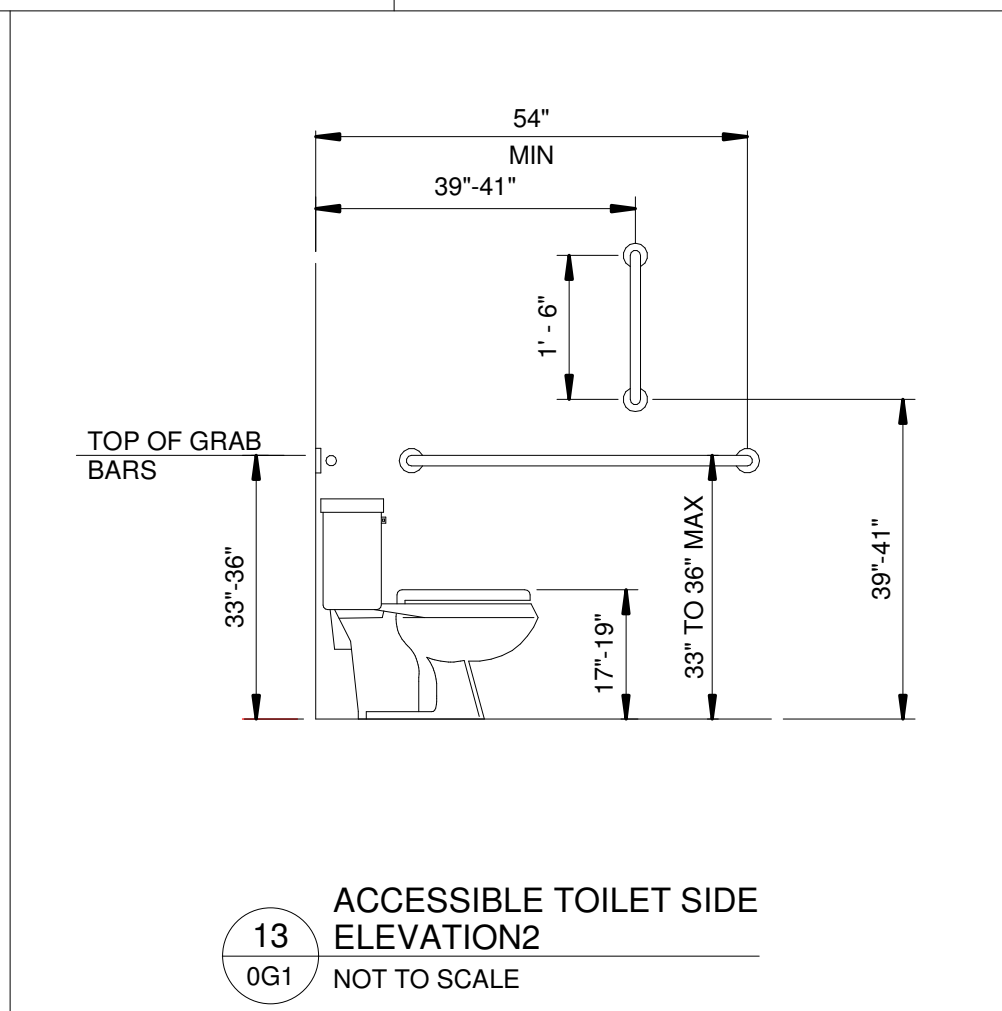
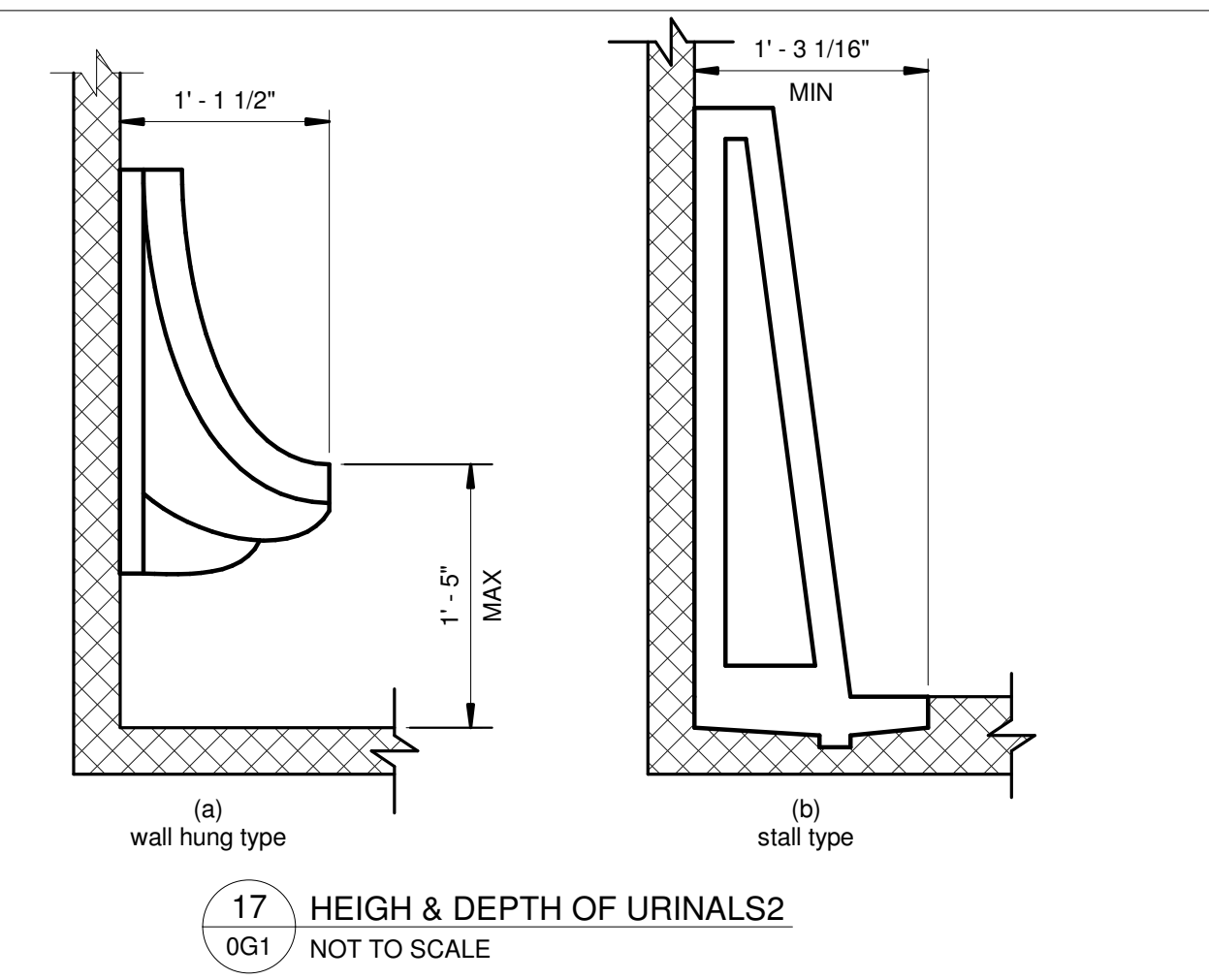
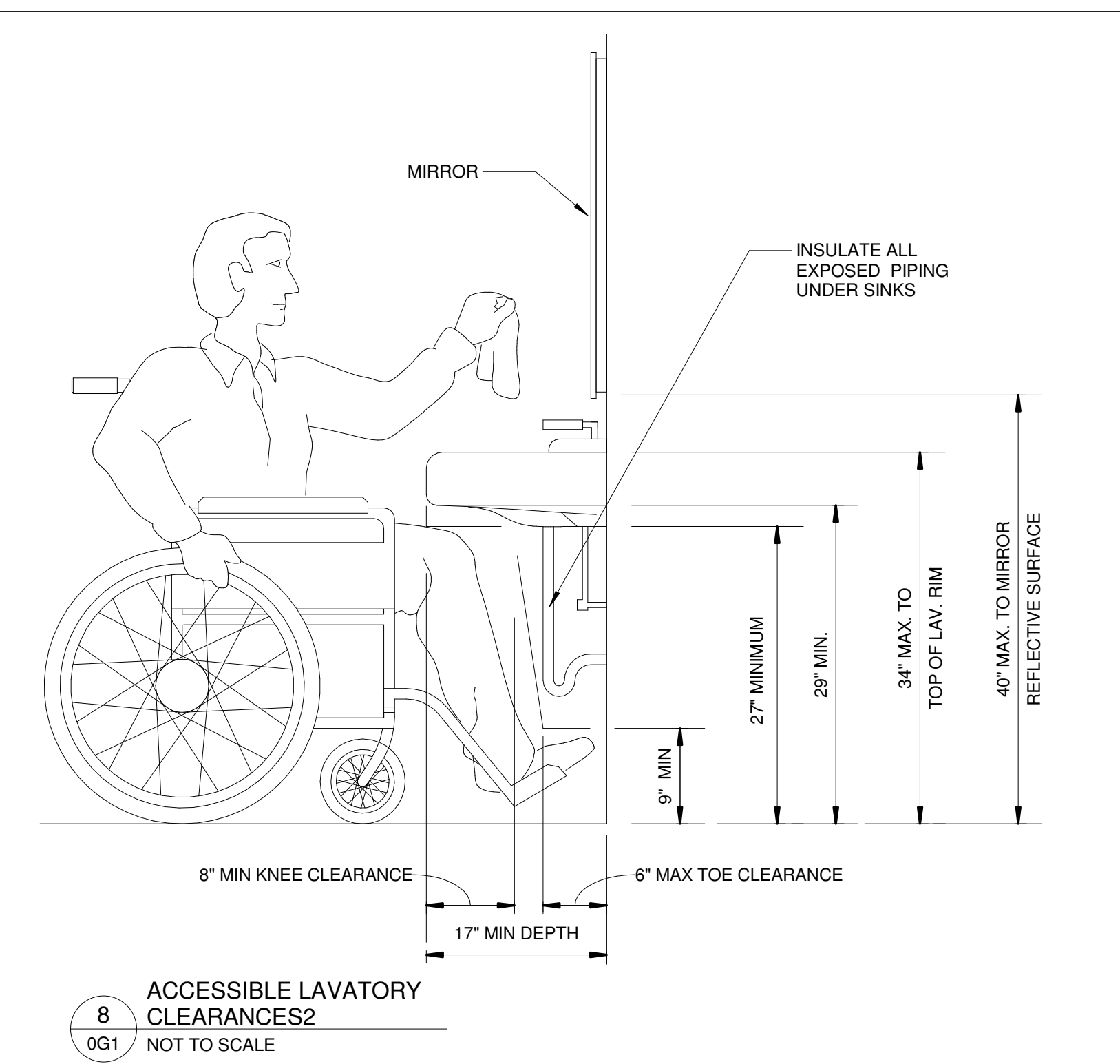
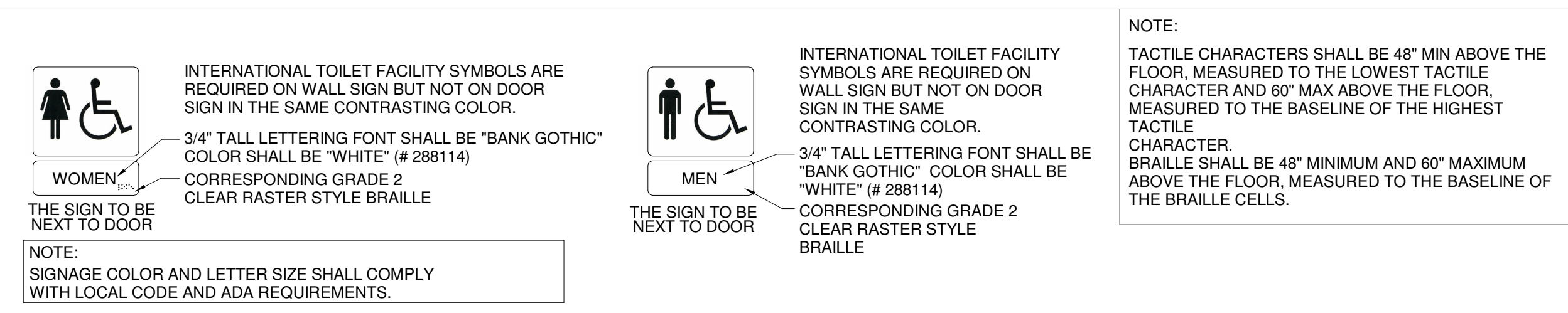
SYMBOLS			
	BATT INSULATION		GYPSUM BOARD
	BLOCKING		RIGID INSULATION
	BRICK		LUMBER
	CONCRETE		MASONRY
	EARTH		PLYWOOD
	FINISH WOOD		SAND
	STONE		STEEL
SHEET LIST			
NO	NAME		
00	COVER SHEET		
0G1	FIXTURES & ACCESSORIES CLEARANCES		
0G2	FIXTURES & ACCESSORIES CLEARANCES		
01	PLANS		
02	CEILING & ROOF PLANS		

E:\Dropbox\00 Projects\03-02-2012 - 14\STORE LEE'S SUMMIT\Store 3880 NE AKIN\DR REV 1.rvt

## FIXTURES & ACCESSORIES HEIGHTS AND CLEARANCES

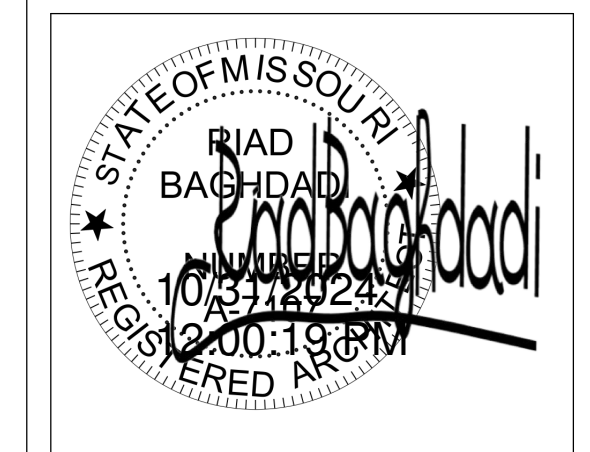


## ACCESSIBLE DOOR SIGNS

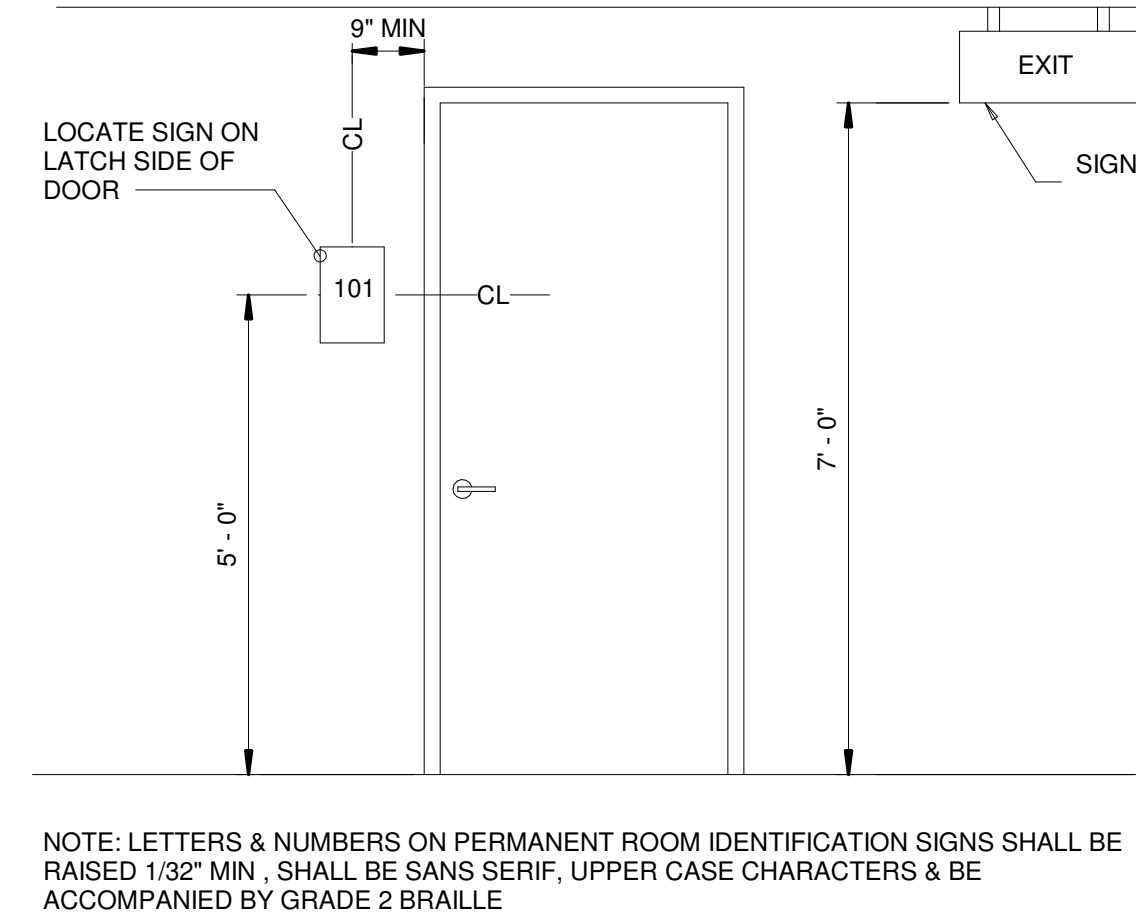


**RB**  
**ARCHITECTURE ENGINEERING  
CONSTRUCTION**

11661 COLLEGE BLVD STREET, OVERLAND PARK KANSAS 66210  
TEL: (913) 375-7659 EMAIL: riad.baghdadi@yahoo.com

[illegible]

<p>RB ARCHITECTURE ENGINEERING CONSTRUCTION</p> <p>COPYRIGHT</p> <p>THESE PLANS ARE THE PROPERTY OF RB ARCHITECTURE ENGINEERING CONSTRUCTION. NO PART OF THESE PLANS IN WHOLE OR PART OR THE PREPARATION OF DERIVATIVE WORKS THEREOF WITHOUT THE EXPRESS WRITTEN PERMISSION OF RB ARCHITECTURE ENGINEERING IS ENTIRELY PROHIBITED.</p>	<p>RETAIL STORE</p> <p>3680 NE AKIN DR, UNIT:134</p> <p>LEES SUMMIT, MISSOURI</p>
<p>FIXTURES &amp; ACCESSORIES CLEARANCES</p>	<p>00G1</p>
<p>GROUP</p>	<p>SHEET NO.</p>



The diagram illustrates four different fire protection equipment installation configurations, each with a specific height dimension indicated by a vertical arrow on the left:

- Option 1:** A fire extinguisher is shown wall hung. The dimension is 5' - 0" MAXIMUM.
- Option 2:** A fire extinguisher is shown installed inside a recessed cabinet. The dimension is 5' - 6" MAXIMUM.
- Option 3:** A fire extinguisher and a fire hose valve are shown installed inside a recessed cabinet. The dimension is 5' - 6" MAXIMUM.
- Option 4:** A fire extinguisher, a fire hose valve, and a fire department valve are shown installed inside a recessed cabinet. The dimension is 3' - 5 9/32" MAXIMUM.

1  
OG2

ACCESSIBLE MANEUVERING  
CLEARANCE AT MANUAL SWINGING  
DOORS AND GATES2

NOT TO SCALE

- NOTES:**
1. DOOR LOCKS SHALL REQUIRE NO TIGHT GRASPING, PINCHING, OR TWISTING OF THE WRIST IN ACCORDANCE WITH ADAAG §§ 404.2.7 AND 309.4.
  2. DOOR PULL & APPROACH SHALL COMPLY WITH ADAAG § 404.2.
  3. PROVIDE CLEAR FLOOR SPACE BETWEEN IN FRONT AND AROUND FURNITURE IN ACCORDANCE WITH ADAAG § 305.
  4. ALL ELECTRICAL INLETS AND SWITCHES SHALL BE MOUNTED NO HIGHER THAN 48 INCHES ABOVE THE FLOOR.
  5. IRON HANDLE SHALL BE MOUNTED NO HIGHER THAN 48 INCHES ABOVE THE FLOOR IN ACCORDANCE WITH ADAAG § 308.2.
  6. THE SHELF ABOVE THE CLOTHES HANGERS FOR CLOTHES SHALL BE MOUNTED NO HIGHER THAN 48 INCHES ABOVE THE FLOOR. IN ACCORDANCE WITH ADAAG § 308.2.
  7. END OF THE DRAPERY ROD PULLS CLOSEST TO THE FLOOR SHALL BE NO HIGHER THAN 48 INCHES ABOVE THE FLOOR IN ACCORDANCE WITH ADAAG § 308.2.
  8. SECURITY DOOR SECURITY SHALL BE MOUNTED NO HIGHER THAN 48 INCHES ABOVE THE FLOOR. IN ACCORDANCE WITH ADAAG 404.2.7.
  9. PROVIDE TURNING SPACE OF NO LESS THAN 60 INCHES IN DIAMETER OR A T-SHAPED TURNING SPACE WITHIN A MINIMUM OF A 60 INCH SQUARE, IN ACCORDANCE WITH ADAAG §§ 304.3.1 OR 304.3.2.
  10. PROVIDE 30" CLEARANCE ALONG THE LENGTH OF THE BATHTUB IN ACCORDANCE ADAAG § 607.2.
  11. PROVIDE GRAB BARS FOR THE BATHTUB IN ACCORDANCE WITH ADAAG § 607.4.2.
  12. PROVIDE HORIZONTAL GRAB BAR ON THE CONTROL END AND THE OTHER END OF THE BATHTUB IN ACCORDANCE WITH ADAAG §§ 607.4.1.2 AND 607.4.2.2.
  13. PROVIDE GRAB BAR ON THE HEAD END WALL AT THE FRONT EDGE OF THE BATHTUB IN ACCORDANCE WITH ADAAG § 607.4.2.3.
  14. HANDLE TO THE SHOWER SPRAY SHALL BE LOCATED NO HIGHER THAN 48 INCHES ABOVE THE FLOOR OF THE BATHTUB IN ACCORDANCE WITH ADAAG §§ 308.2 AND 608.6.
  15. PROVIDE PROTECTIVE INSULATION FOR EXPOSED LAVATORY SUPPLY AND DRAIN PIPES UNDER THE LAVATORY IN ACCORDANCE WITH ADAAG § 606.5.
  16. PROVIDE 60 INCHES WIDE STALL WIDTH FOR THE TOILET AREA IN ACCORDANCE WITH ADAAG §§ 604.8.1 AND 304.3.
  17. CENTERLINE OF THE TOILET PAPER DISPENSER SHALL BE LOCATED BETWEEN 7 INCHES AND 9 INCHES FROM THE FRONT OF THE TOILET IN ACCORDANCE WITH ADAAG § 604.7.
  18. LIGHT SWITCHES SHALL BE MOUNTED NO HIGHER THAN 48 INCHES ABOVE THE FLOOR IN ACCORDANCE WITH ADAAG § 308.2.
  19. HAIRDRYER HANDLE SHALL BE INSTALLED NO HIGHER THAN 48 INCHES ABOVE THE FLOOR IN ACCORDANCE WITH ADAAG § 308.2.
  20. TOWEL SHELF ABOVE THE TOILET SHALL BE MOUNTED NO HIGHER THAN 48 INCHES ABOVE THE FLOOR IN ACCORDANCE WITH ADAAG § 308.2.

[illegible]

## RETAIL STORE

3680 NE AKIN DR, UNIT:134  
LEES SUMMIT, MISSOURI

**RB ARCHITECTURE ENGINEERING  
CONSTRUCTION  
COPYRIGHT**

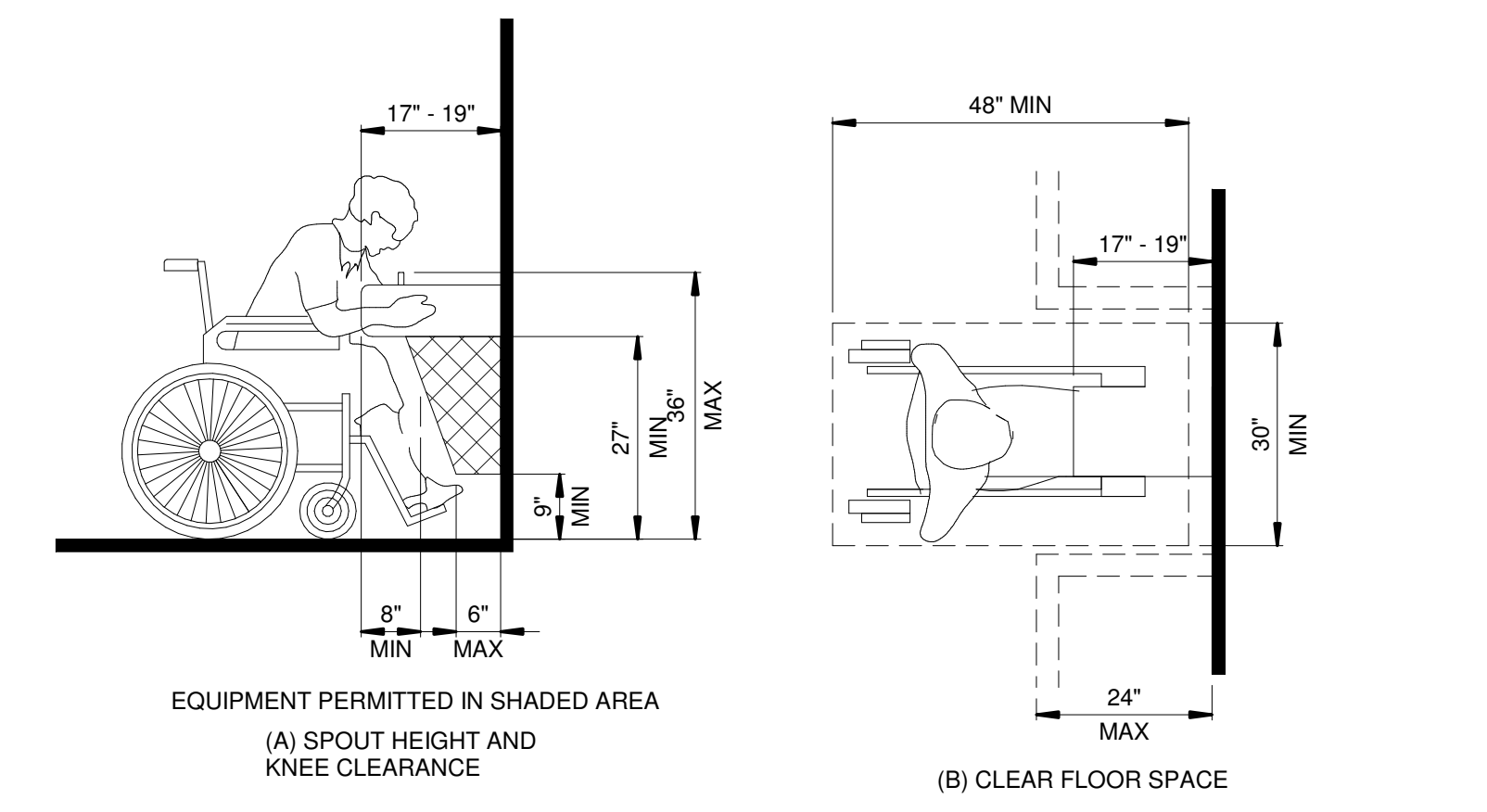
THESE PLANS ARE THE PROPERTY OF  
RB ARCHITECTURE ENGINEERING  
CONSTRUCTION. REPRODUCTION OF  
THESE PLANS IN WHOLE OR PART OR  
THE PREPARATION OF DERIVATIVE  
WORKS THEREOF WITHOUT THE  
EXPRESSED WRITTEN PERMISSION OF  
RB ARCHITECTURE ENGINEERING IS  
ENTIRELY PROHIBITED.

FIXTURES &  
ACCESSORIES  
CLEARANCES

# OG2

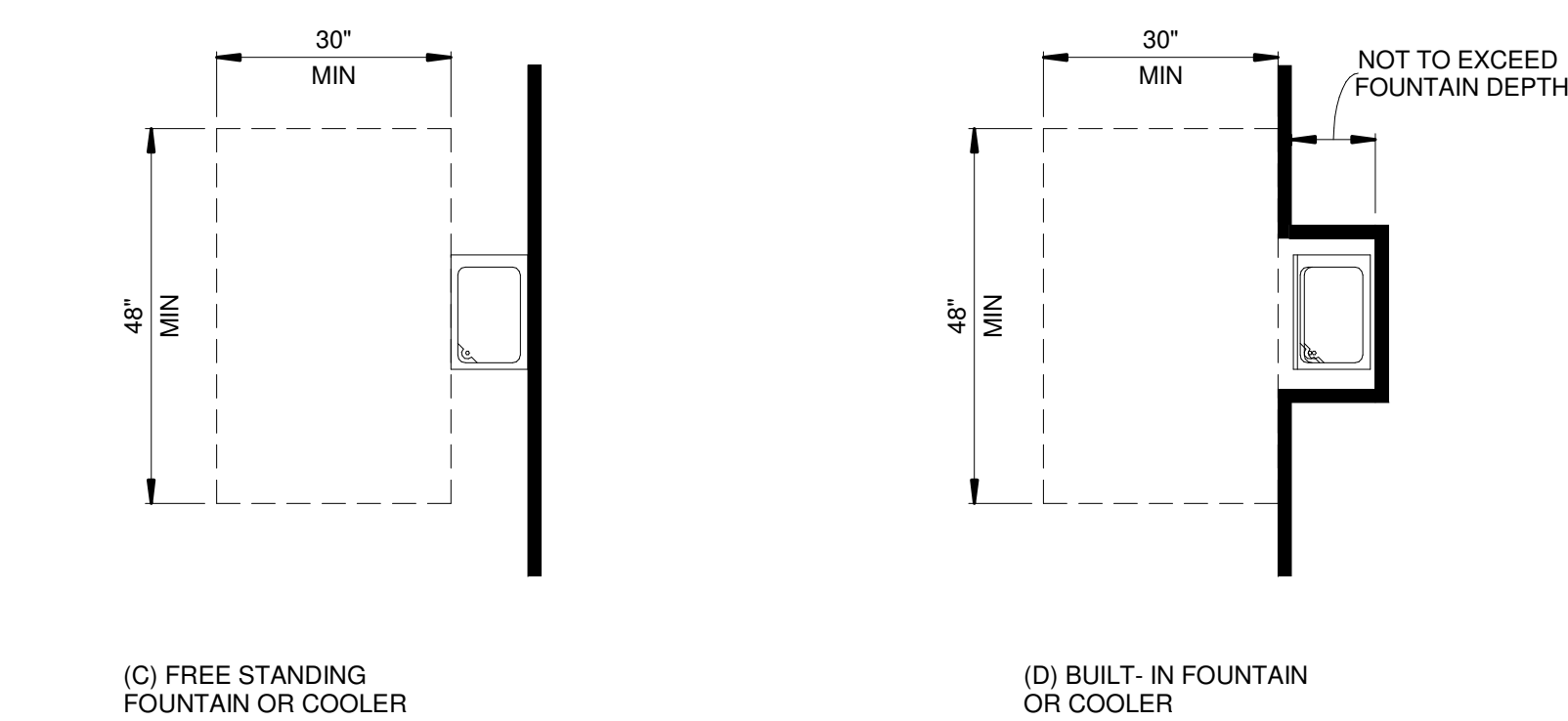
GROUP	SHEET NO.
-------	-----------

E:\Dropbox\00 Projects 03-02-2012 - 14\STORE LEE'S SUMMIT AKIN 3680 NE AKIN DR LEE'S SUMMIT\Store 3680 NE AKIN DR REV 1.rvt

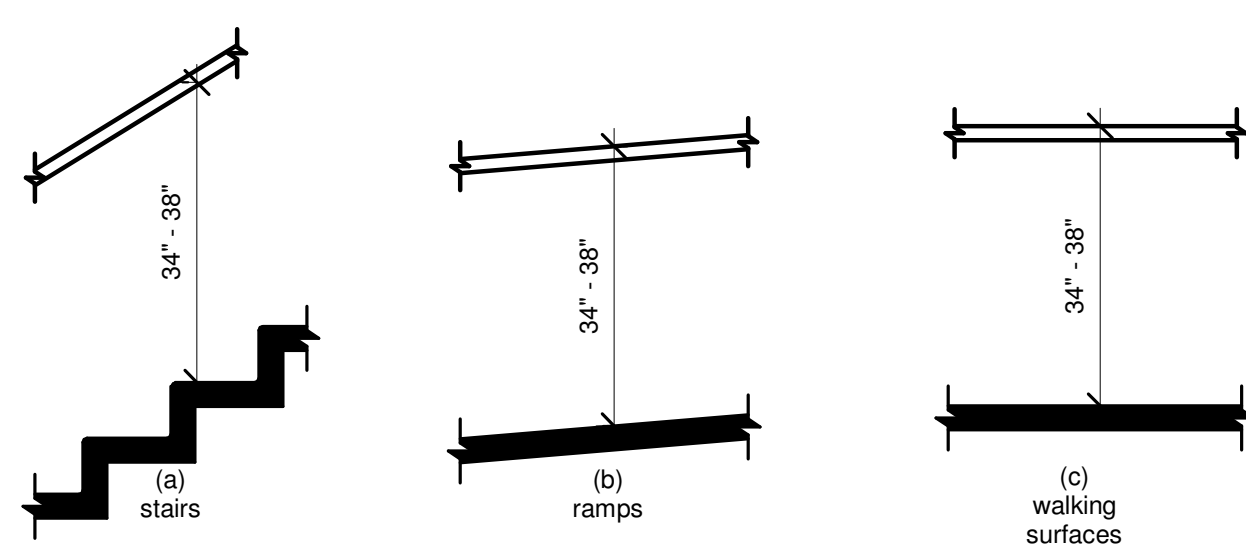


3  
0G2

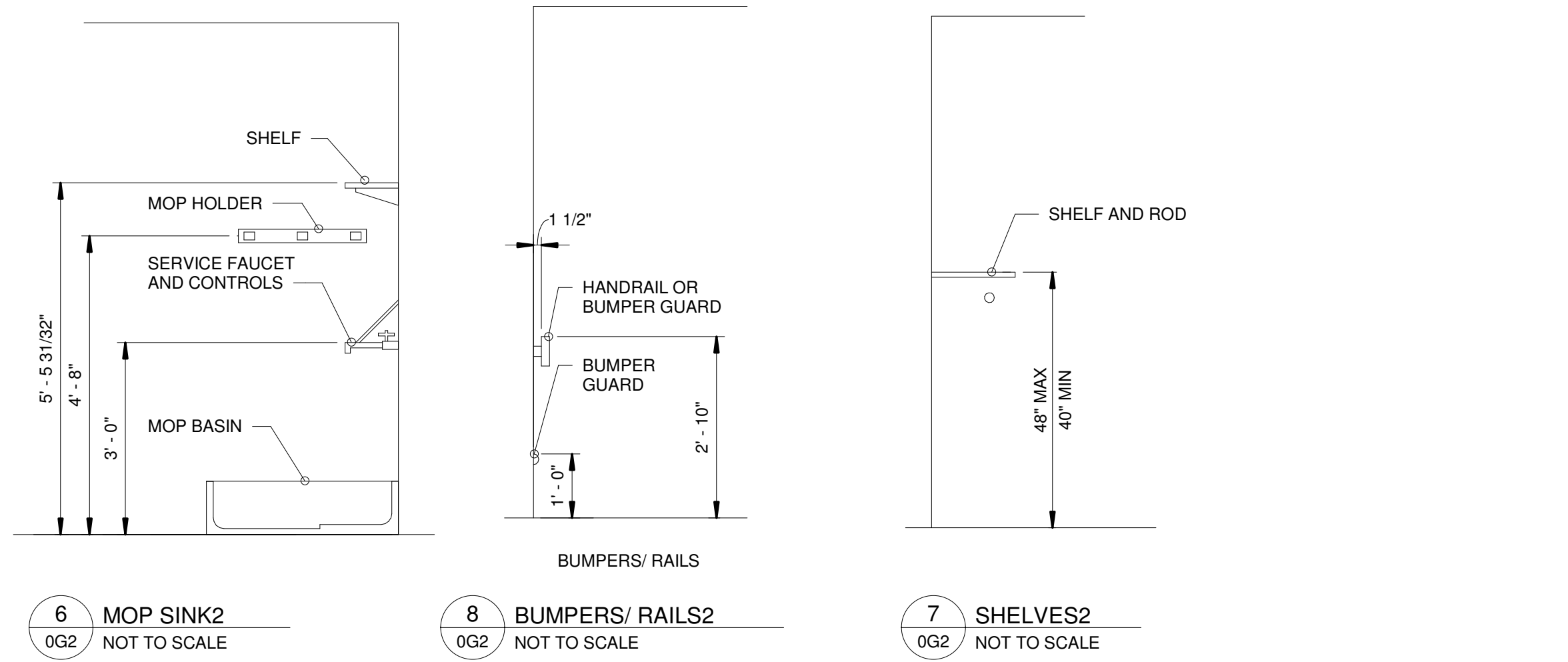
ACCESSIBLE HANDRAIL  
EXTENSION2  
NOT TO SCALE



2	ACCESSIBLE DRINKING WATER FOUNTAIN2
0G2	NOT TO SCALE



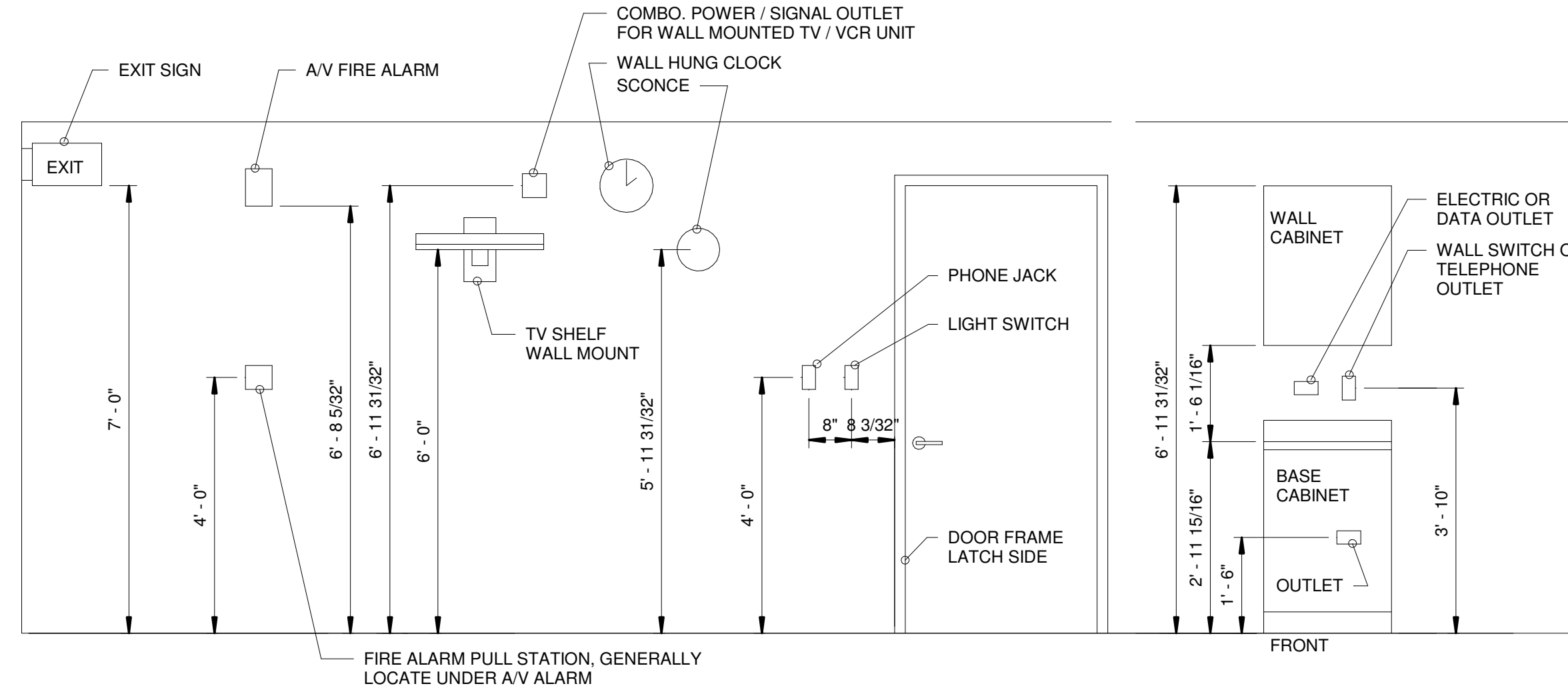
4 ACCESSIBLE HANRAIL HEIGHT2  
0G2 NOT TO SCALE



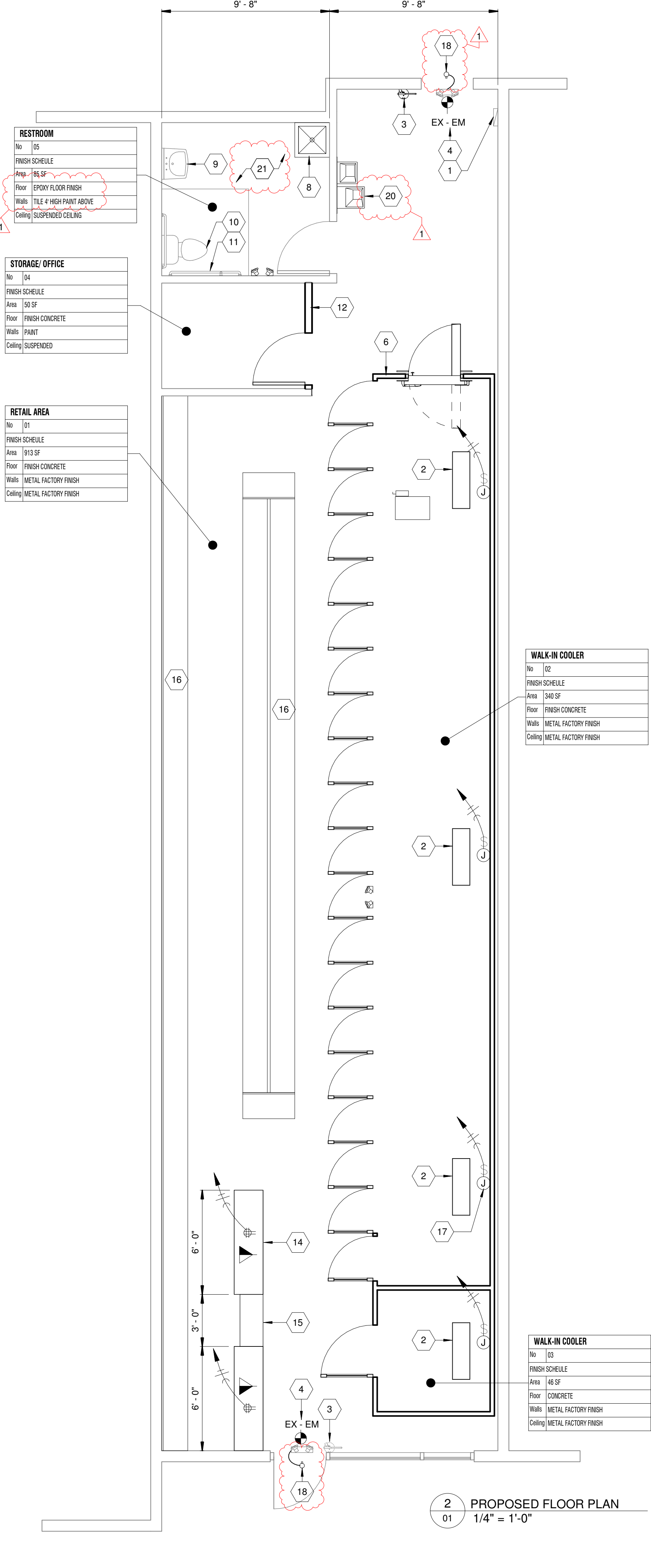
6 MOP SINK2  
0G2 NOT TO SCALE

8 BUMPERS/ RAILS2  
0G2 NOT TO SCALE

7 SHELVES2  
0G2 NOT TO SCALE



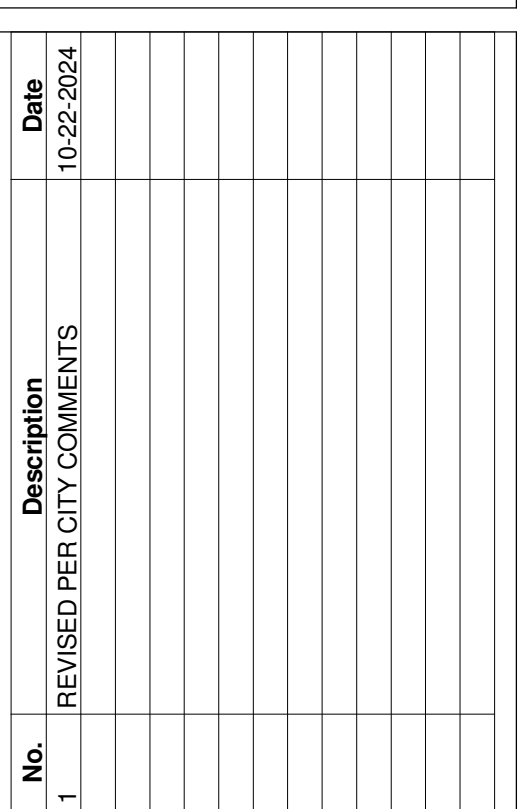
9 ELECTRICAL/ CONTROL DEVICES2  
0G2 NOT TO SCALE



**RB**

**ARCHITECTURE ENGINEERING  
CONSTRUCTION**

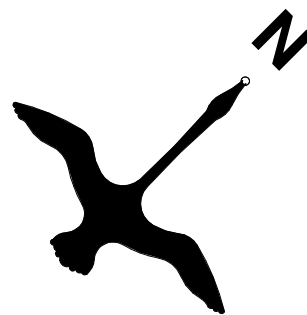
11661 COLLEGE BLVD STREET OVERLAND PARK KANSAS 66210  
TEL: (913) 375-7659 EMAIL: riad.baghdadi@yahoo.com



**RB ARCHITECTURE ENGINEERING  
CONSTRUCTION  
COPYRIGHT**

THESE PLANS ARE THE PROPERTY OF  
RB ARCHITECTURE ENGINEERING  
CONSTRUCTION. REPRODUCTION OF  
THESE PLANS IN WHOLE OR PART OR  
THE PREPARATION OF DERIVATIVE  
WORKS THEREOF WITHOUT THE  
EXPRESSED WRITTEN PERMISSION OF  
RB ARCHITECTURE ENGINEERING IS  
ENTIRELY PROHIBITED.

# 01



OUTDOOR AIR VENTILATION SCHEDULE Copy 1												
Room Number	Room Name	Area	OCCUPANT DENSITY #/1000 S.F.	NO. OF TOILET FIXTURE	EXHAUST AIRFLOW RATE CFM	CFM/ PERSON	CFM/ S.F.	OCCUPANT	VENTILATION BASED ON OCCUPANT	VENTILATION BASED ON AREA	TOTAL FRESH AIR	REMARKS
01	RETAIL AREA	913 SF	15	0	0	7.5	0.12	14	103	109.6	212	
02	WALK-IN COOLER	340 SF	0	0	0	0	0.06	0	0	20.4	20	
03	WALK-IN COOLER	46 SF	0	0	0	0	0.06	0	0	2.7	3	
04	STORAGE/ OFFICE	50 SF	0	0	0	0	0.12	0	0	6.0	6	
05	RESTROOM	85 SF	0	1	50	0	0	0	0	0.0	50	

NOTE:

1. ADJUST HVC UNIT TO ALLOW A MINIMUM OF 291 CFM OF FRESH AIR
2. TEST EXISTING HVAC SYSTEM AND REPAIR AS REQUIRED.

[illegible]