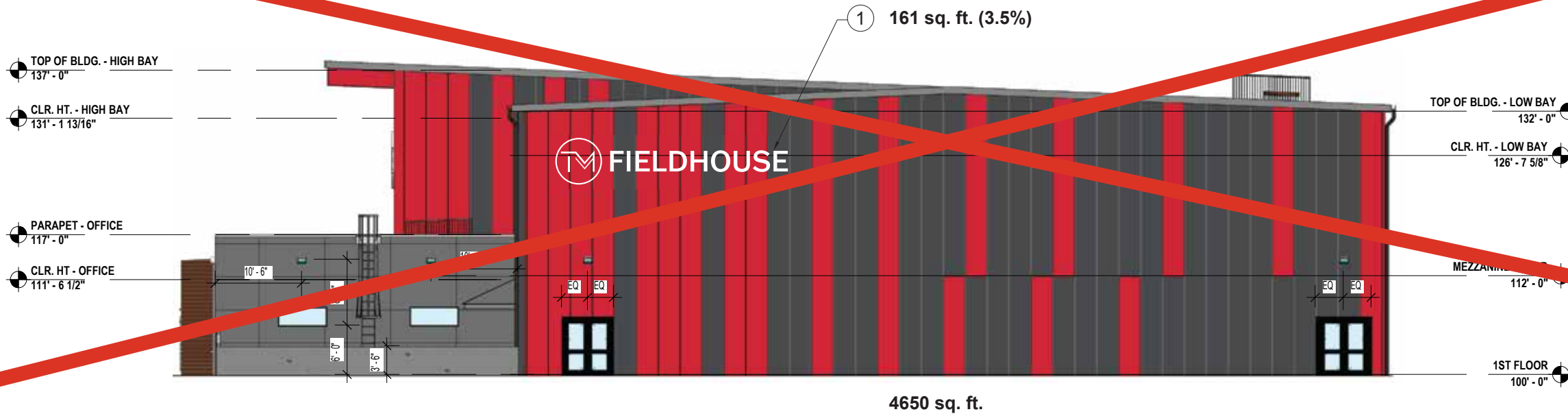
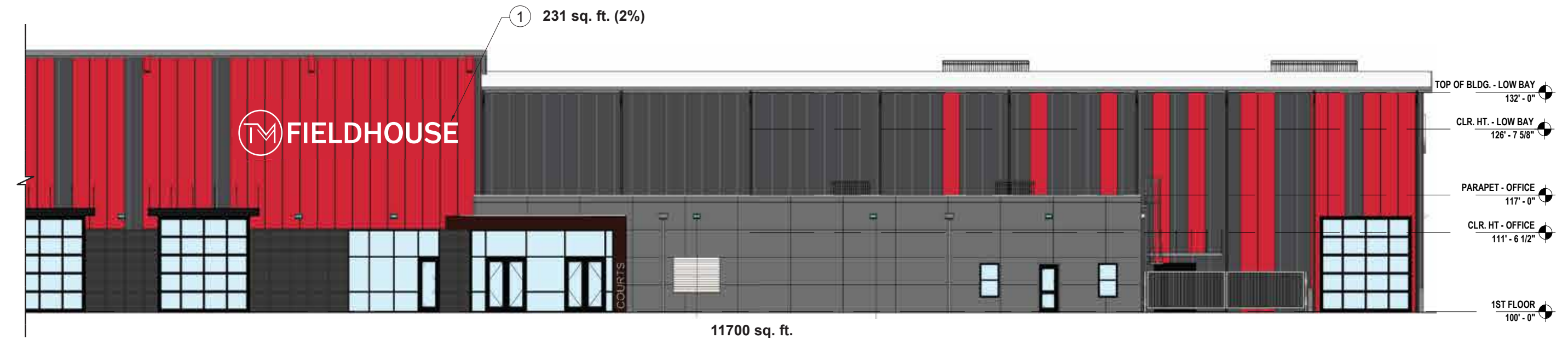


- Notes
- ① 30" Letters and Logo, 4.3" deep, face-lit. Mount flush to wall surface. 3/4" trim cap, painted to match adjacent returns.
 - ② 36" Letters and Logo, 4.3" deep, face-lit. Mount flush to wall surface. 3/4" trim cap, painted to match adjacent returns.
- White 12V LED lighting.
Power supplies are remote behind wall.



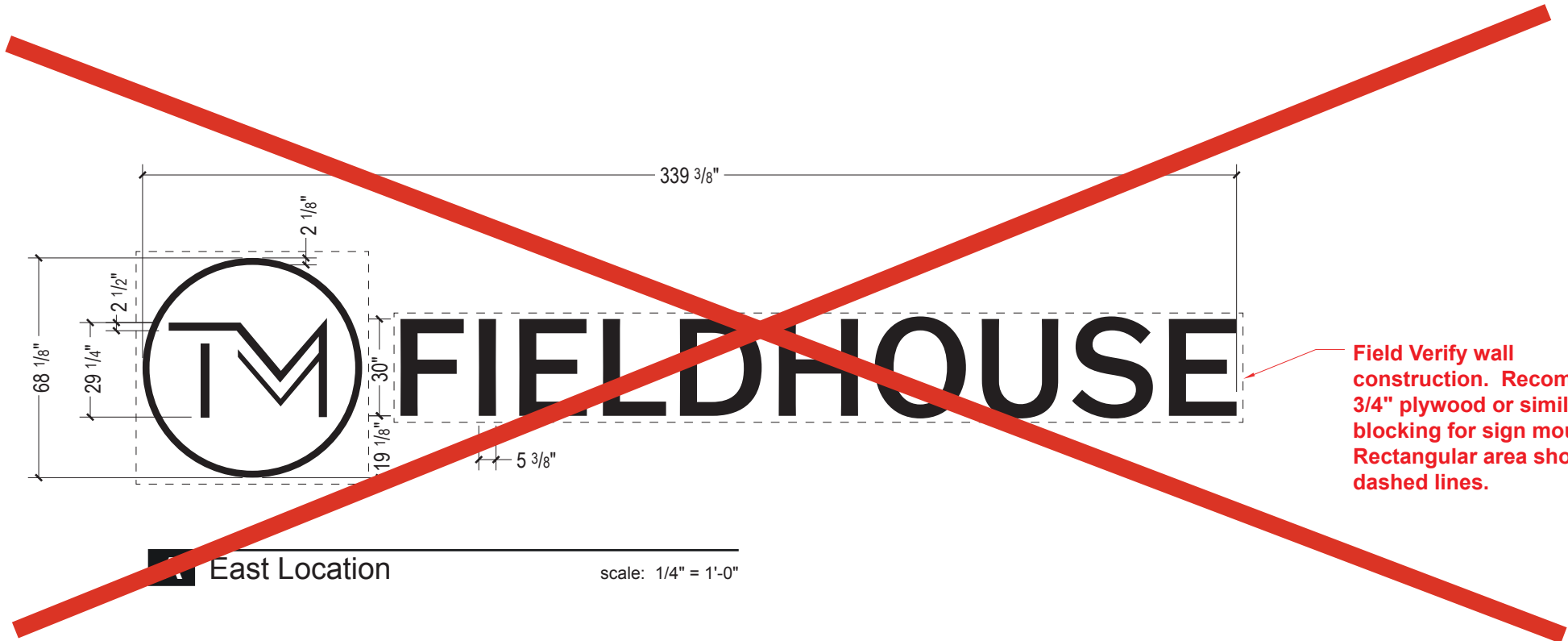
A East Elevation scale: 1/16" = 1'-0"



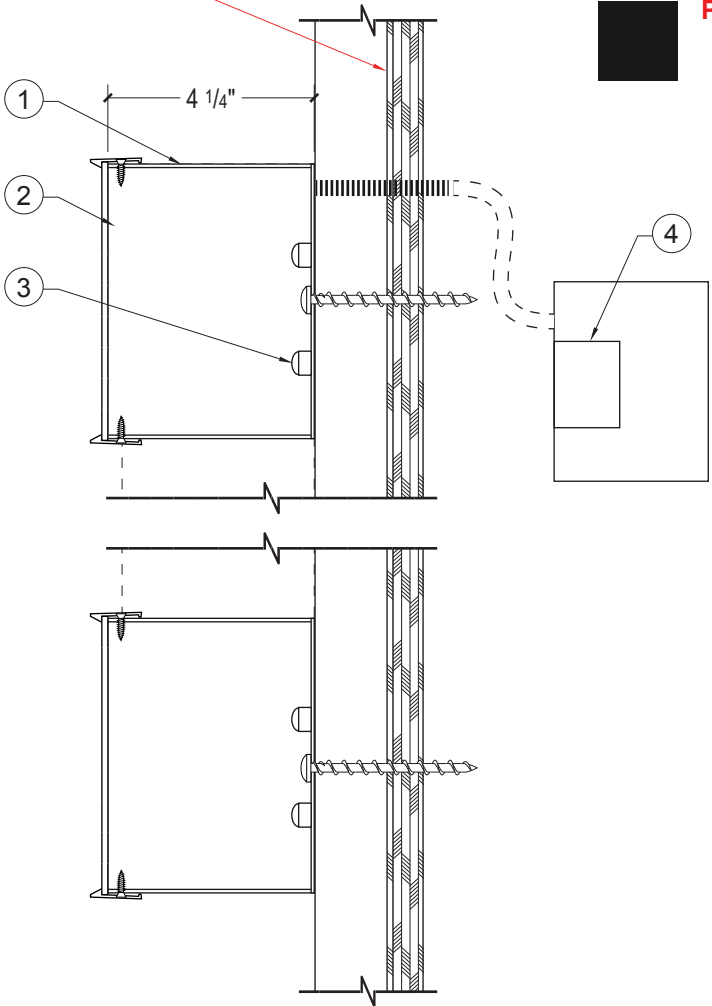
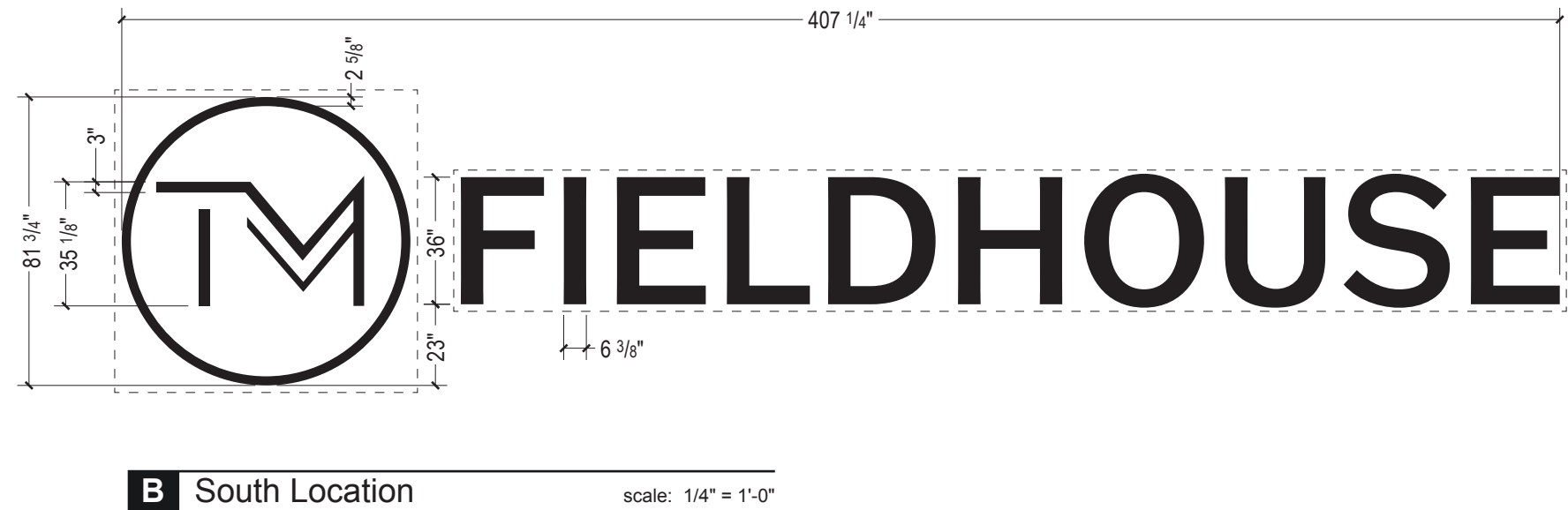
B South Elevation scale: 1/16" = 1'-0"

Return paint color TBD

Trim cap color TBD



Field Verify wall construction. Recommend 3/4" plywood or similar blocking for sign mounting. Rectangular area shown as dashed lines.



Notes

- ① 4" deep face-lit channel letters. .080" aluminum backs, .040" aluminum returns, weld and seal internally, 1/4" weep holes at bottom returns. Paint to match adjacent faces.
- ② Translucent white acrylic faces with digitally printed translucent white vinyl applied first surface. 3/4" trim cap, painted to match adjacent faces.
- ③ White 12V LED lighting, Hanley NRG-PE-2 or sim. East - 30" letters and logo, approx 320 modules. South - 36" letters and logo, approx 384 modules.
- ④ Power supplies are remote behind wall. 30" letters and logo, (6) 12V/60W @ 1.0A each. 6.0 A at East sign. 36" letters and logo, (8) 12V/60W @ 1.0A each. 8.0 A at South sign.

Paint color TBD

C Typ. Section

scale: 3" = 1'-0"



STAR SIGNS, LLC
801 EAST NINTH STREET
LAWRENCE, KANSAS 66044
P 785.842.4892 F 785.842.2947
WWW.STARSIGNSLLC.COM

Tailor Made Field House
Lee's Summit, MO

Exterior 30" and 36" Letters and Logo, Face-Lit
Qty (2) Sets

THIS DRAWING IS THE SOLE PROPERTY OF STAR SIGNS, L.L.C., AND IS INTENDED FOR CUSTOMER APPROVAL ONLY.

REVISIONS:

☐ APPROVED

☐ APPROVED AS NOTED

☐ REVISE AND RESUBMIT

DATE

SIGNATURE

SP: SR PM: SR Dwg: JH

7262

Job #

ISSUED: 2 / 13 / 2024

FIRST PRINT: 2/13/2024

1.2

SHEET