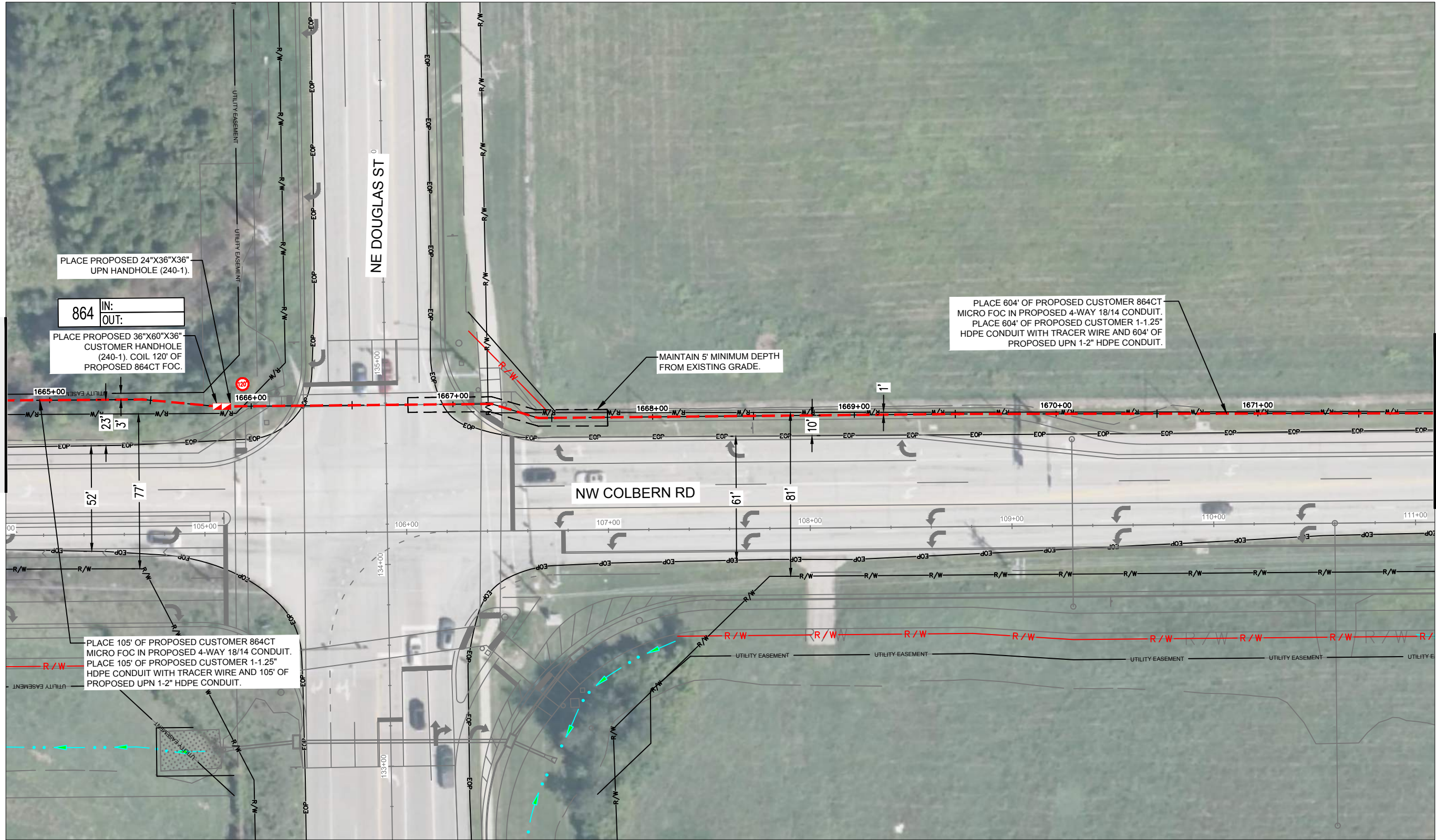


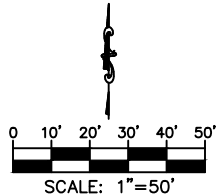
DWG: F:\2024\00001-00500\024-00009\40-design\AutoCAD\msa phases\unite-38_58_mile_build\Final Plans\UPN-38_58_Mile_Project Sheets.dwg USER: avellani
DATE: Aug 29, 2024 8:58am XREFS: phase 1 sheet alignment phase 1_row phase 1 southern half CCR_CTS_MAIN UPN-38_58_Mile_Full Route Alignment

MATCH TO SHEET 239



MATCH TO SHEET 241

NOTE: COUNTY GIS APPEARS INACCURATE IN THIS AREA.
CONTRACTOR TO VERIFY RIGHT OF WAY PRIOR TO CONSTRUCTION.



drawn by: RMS
checked by: AFJ
approved by: JMC
project no.: 41296
drawing no.: UPN-38
date: 8/29/2024

SHEET
240 OF 456

PROJECT SHEET

PROJECT NUMBER: 41296

MISSOURI

2024

REVISIONS DESCRIPTION

DATE

REV. NO.

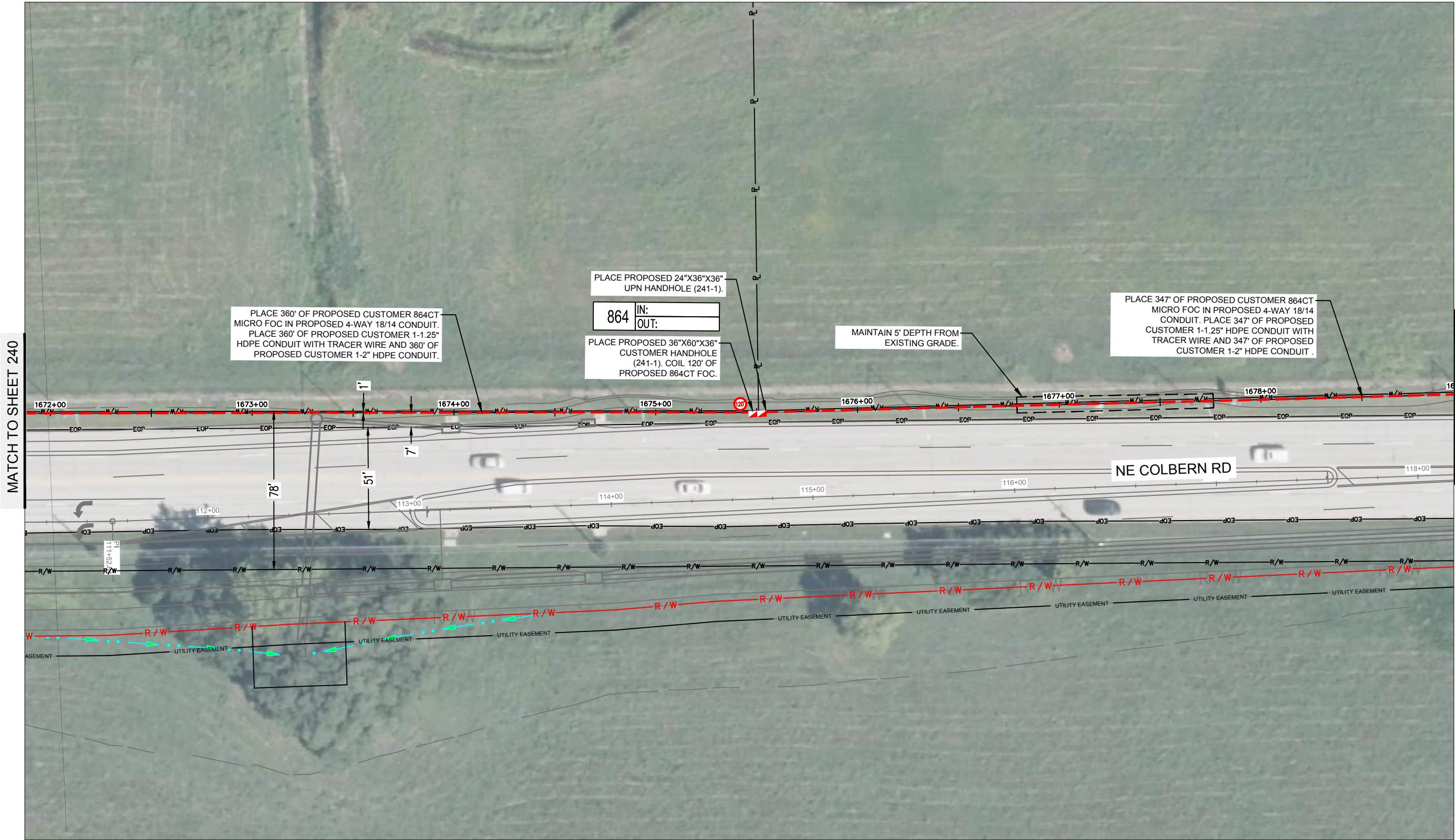
REVISIONS



olsson

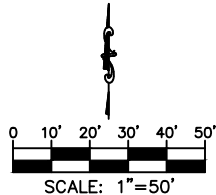
7301 West 133rd Street, Suite 200
Overland Park, KS 66213-4750
TEL: 913.381.1170
FAX: 913.381.1174
www.olsson.com

DWG: F:\2024\00001-00500\024-00009\40-design\AutoCAD\msa phases\unite-38_58_mile build\Final Plans\UPN-38_58_mile Project Sheets.dwg USER: avellani
DATE: Aug 29, 2024 8:58am XREFS: phase 1 sheet alignment phase 1_row CCR_CTS_MAIN UPN-38_58 Mile Full Route Alignment



MATCH TO SHEET 240

MATCH TO SHEET 242

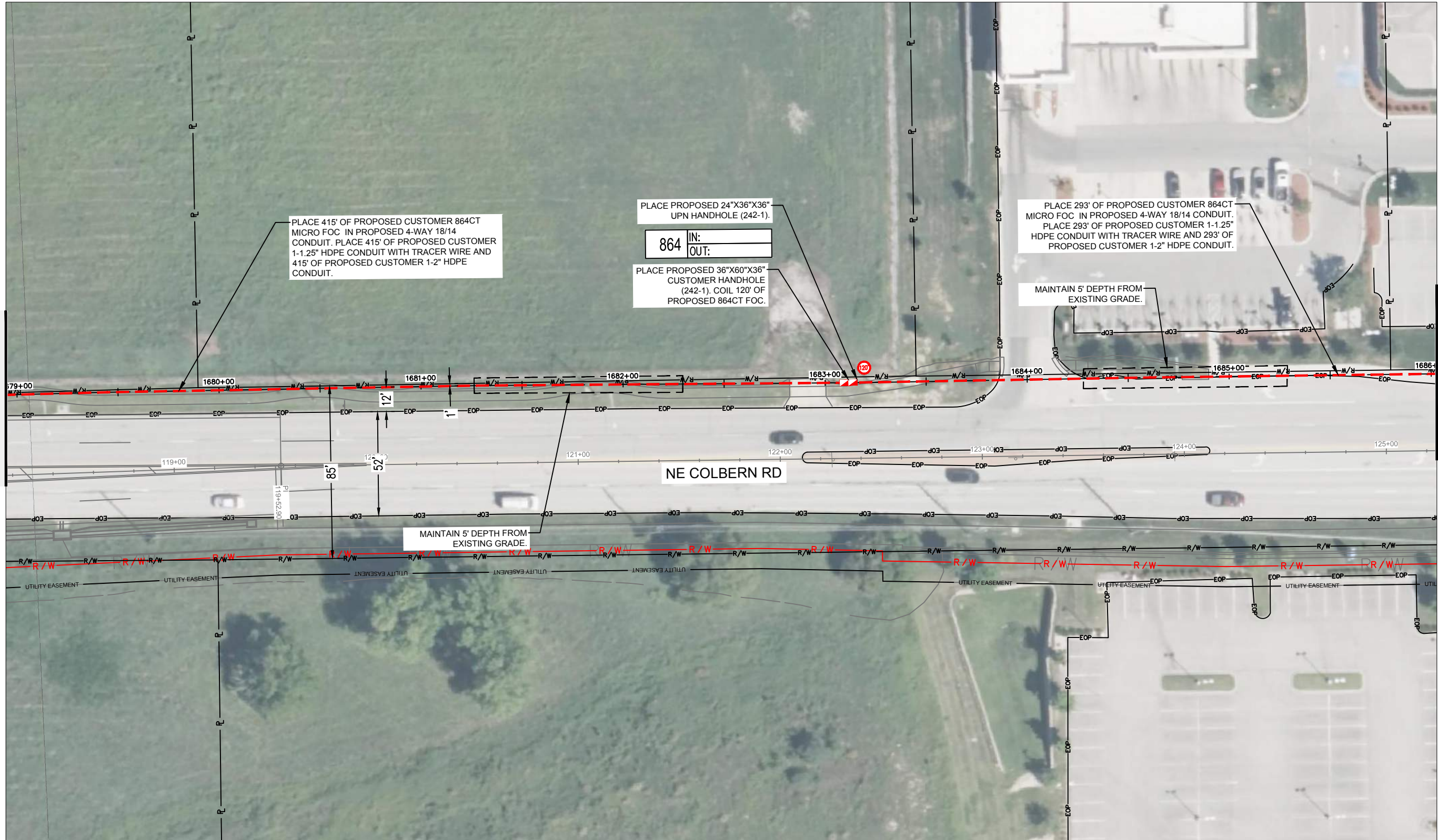


PROJECT SHEET		REV. NO.	DATE	REVISIONS DESCRIPTION
PROJECT NUMBER: 41296				
MISSOURI		2024		REVISIONS
drawn by: _____ RMS				
checked by: _____ AFV				
approved by: _____ JMC				
project no.: _____ 41296				
drawing no.: _____ UPN-38				
date: _____ 8/29/2024				
SHEET				
241 OF 456				

7301 West 133rd Street, Suite 200
Overland Park, KS 66213-4750
TEL: 913.381.1170
FAX: 913.381.1174
www.olson.com

DWG: F:\design\AutoCAD\misc phases\unit-38.58 mile build\Final Plans\UPN-38.58 Mile_Project Sheets.dwg USER: awelloni
DATE: Aug 29, 2024 8:58am XREFS: phase 1 sheet alignment phase 1_row phase 1 southern_half CCR_CTS_MAIN UPN-38.58 Mile_Full Route Alignment

MATCH TO SHEET 241



MATCH TO SHEET 243

PROJECT SHEET

PROJECT NUMBER: 41296

MISSOURI

2024

REVISIONS

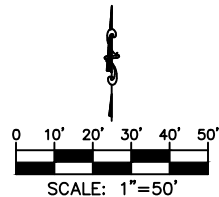
[illegible]

olson

7301 West 133rd Street, Suite 200
Overland Park, KS 66213-4750
TEL 913.381.1170
FAX 913.381.1174
www.dlsson.com



Know what's **below**.
Call before you dig.

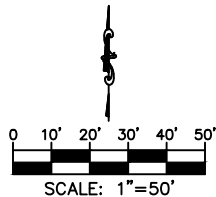


DWG: F:\200001\024-00009\40-design\AutoCAD\msa_phases\unit-38_58_mile\build\Final Plans\UPN-38_58_Mile_Project Sheets.dwg USER: aveliani
XREFS: phase 1 sheet alignment phase 1 row phase 1 southern half CCR_CTS_MAIN UPN-38_58_Mile_Full_Route_Alignment
DATE: Aug 29, 2024 8:55am



MATCH TO SHEET 242

MATCH TO SHEET 244



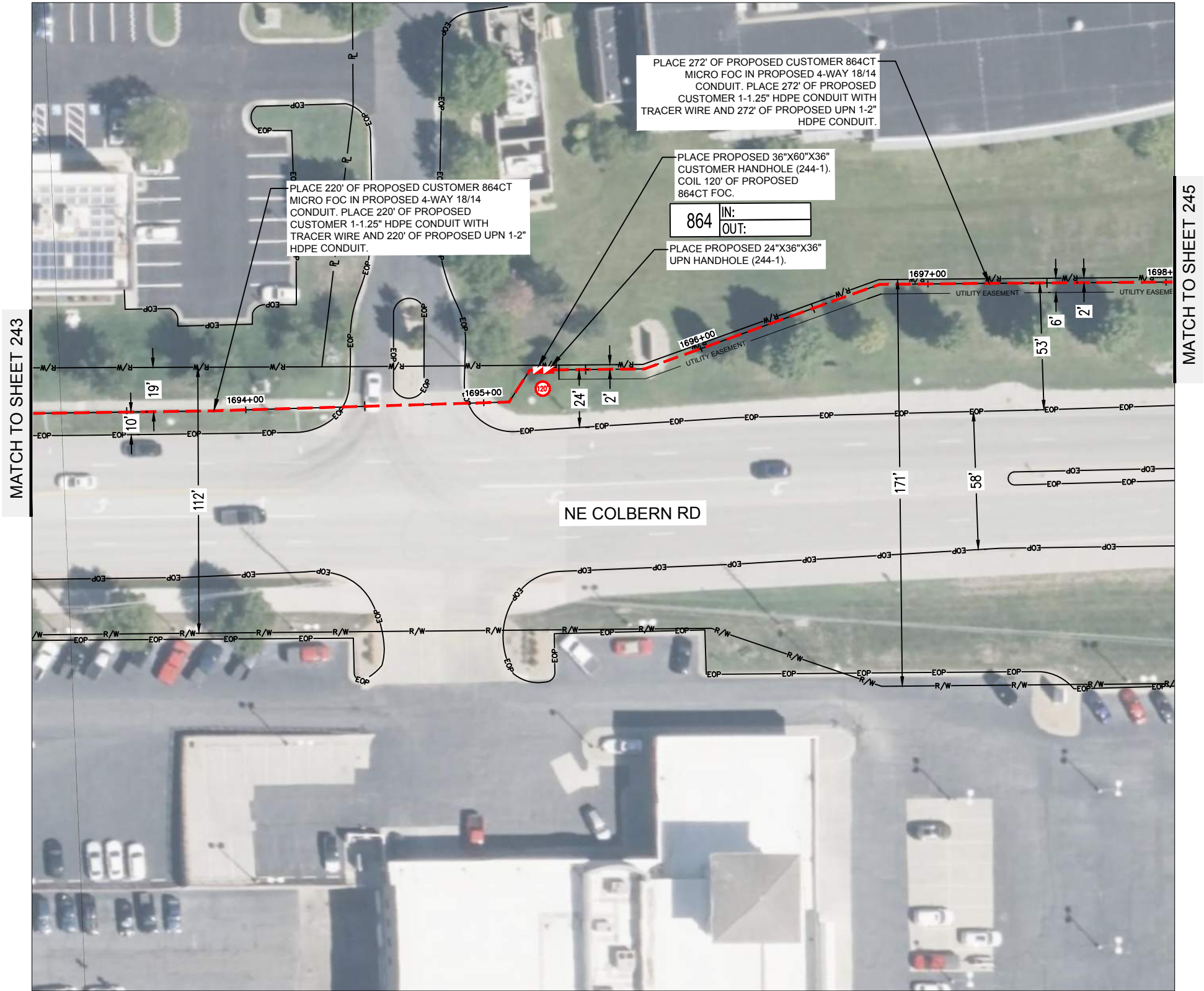
drawn by: _____ RMS		PROJECT SHEET	REV. NO.	DATE	REVISIONS DESCRIPTION
checked by: _____ AFV					
approved by: _____ JMC					
project no.: 41296					
drawing no.: UPN-38					
date: 8/29/2024					
PROJECT NUMBER: 41296			MISSOURI		
			2024		
REVISIONS					



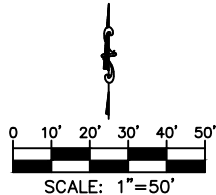
olson

7301 West 133rd Street, Suite 200
Overland Park, KS 66213-4750
TEL 913.381.1170
FAX 913.381.1174
www.dlsson.com

DWG: F:\2024\00001-00500\024-00009\40-design\AutoCAD\msa phases\unite-38 58 mile build\Final Plans\UPN-38_58 Mile_Project Sheets.dwg USER: avellani
DATE: Aug 29, 2024 8:58am XREFS: phase 1 sheet alignment phase 1_row phase 1 southern half CCR_CTS_MAIN UPN-38_58 Mile_Full Route Alignment



NOTE:
1. **MODOT:** OLSSON ASSUMES NO RESPONSIBILITY FOR EXISTING UTILITY LOCATIONS (HORIZONTAL OR VERTICAL) OR RIGHT-OF-WAY PLACEMENT. THE EXISTING UTILITIES AND RIGHT-OF-WAY SHOWN ON THESE PLANS HAVE BEEN PLOTTED FROM THE BEST INFORMATION AVAILABLE. IT IS HOWEVER, THE RESPONSIBILITY OF THE CONTRACTOR TO FIELD VERIFY THE LOCATION OF ALL UTILITIES AND RIGHT-OF-WAY PRIOR TO COMMENCEMENT OF ANY CONSTRUCTION. MODOT REQUIRES UTILITIES TO BE PLACED IN THE LAST 6' OF THEIR RIGHT-OF-WAY IN THE "UTILITY COORIDOR" IN HDPE CONDUIT RUNNING PARALLEL AT A 30" MINIMUM DEPTH AND PERPENDICULAR CROSSINGS AT A 72" MINIMUM DEPTH. PERPENDICULAR CROSSINGS MAY BE PLACED AT A 48" MINIMUM DEPTH IF PLACED IN STEEL CONDUIT.



PROJECT SHEET

PROJECT NUMBER: 41296

MISSOURI

REV. NO.

DATE

REVISIONS DESCRIPTION

2024

REVISIONS

drawn by: RMS

checked by: AFK

approved by: JMC

project no.: 41296

drawing no.: UPN-38

date: 8/29/2024

SHEET

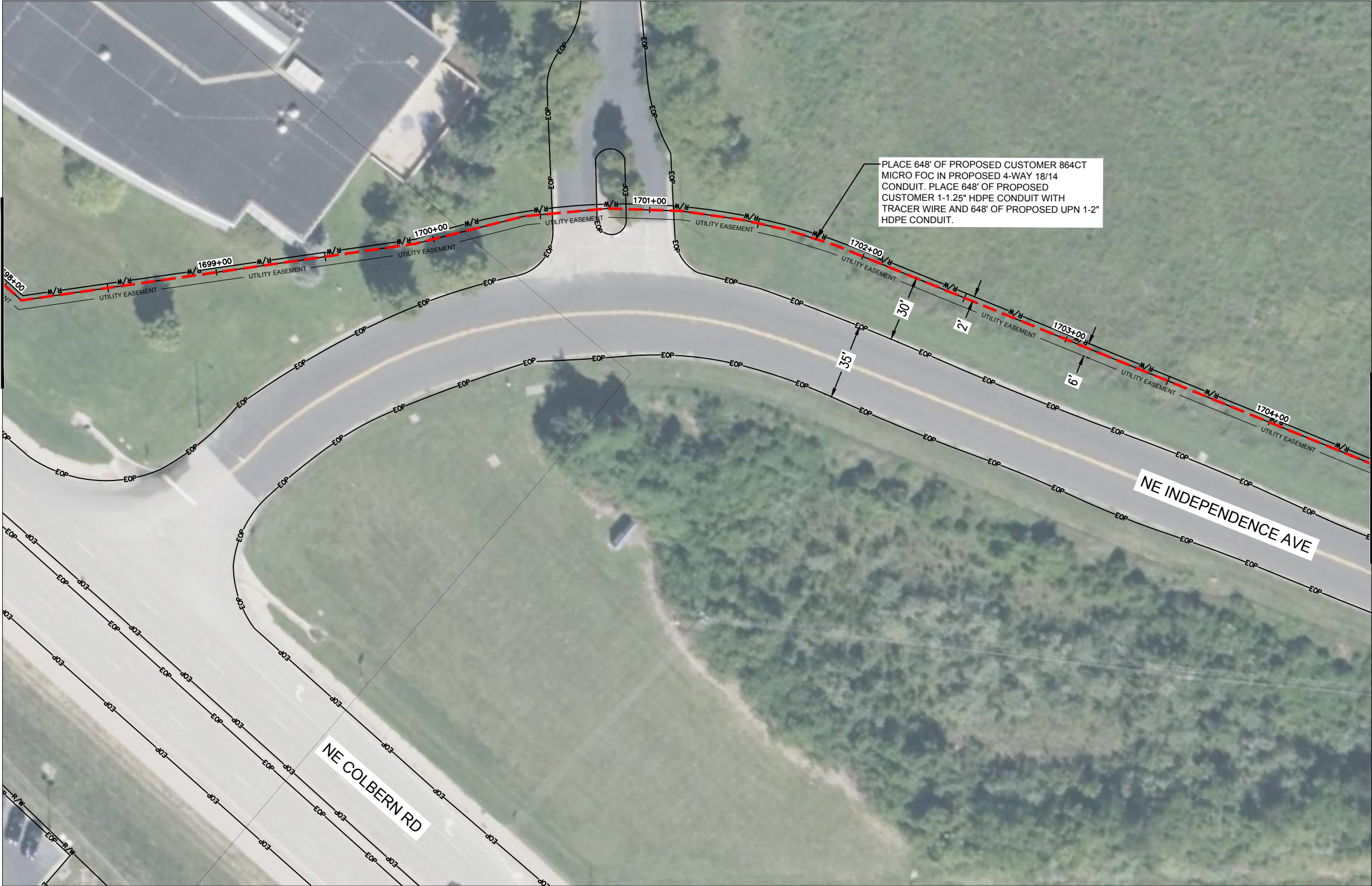
244 OF 456

7301 West 133rd Street, Suite 200
Overland Park, KS 66213-4750

TEL: 913.381.1170
FAX: 913.381.1174
www.olsson.com

DWG: F:\2024\00001-00500\024-00009\40-design\msa phases\unite-38 58 mile build\Final Plans\UPN-38_58 Mile_Project Sheets.dwg USER: avellani
DATE: Aug 29, 2024 8:58am XREFS: phase 1 sheet alignment phase 1_row phase 1 southern half CCR_CTS_MAIN UPN-38_58 Mile_Full Route Alignment

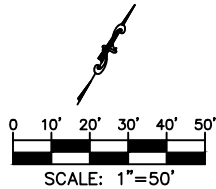
MATCH TO SHEET 244



MATCH TO SHEET 246

NOTE:

1. **MODOT:** OLSSON ASSUMES NO RESPONSIBILITY FOR EXISTING UTILITY LOCATIONS (HORIZONTAL OR VERTICAL) OR RIGHT-OF-WAY PLACEMENT. THE EXISTING UTILITIES AND RIGHT-OF-WAY SHOWN ON THESE PLANS HAVE BEEN PLOTTED FROM THE BEST INFORMATION AVAILABLE. IT IS HOWEVER, THE RESPONSIBILITY OF THE CONTRACTOR TO FIELD VERIFY THE LOCATION OF ALL UTILITIES AND RIGHT-OF-WAY PRIOR TO COMMENCEMENT OF ANY CONSTRUCTION. MODOT REQUIRES UTILITIES TO BE PLACED IN THE LAST 6' OF THEIR RIGHT-OF-WAY IN THE "UTILITY COORIDOR" IN HDPE CONDUIT RUNNING PARALLEL AT A 30" MINIMUM DEPTH AND PERPENDICULAR CROSSINGS AT A 72" MINIMUM DEPTH. PERPENDICULAR CROSSINGS MAY BE PLACED AT A 48" MINIMUM DEPTH IF PLACED IN STEEL CONDUIT.



PROJECT SHEET	REV. NO.	DATE	REVISIONS DESCRIPTION
PROJECT NUMBER: 41296	REVISIONS		
MISSOURI	2024		
SHEET 245 OF 456			

drawn by: RMS
checked by: AFV
approved by: JMC
project no.: 41296
drawing no.: UPN-38
date: 8/29/2024

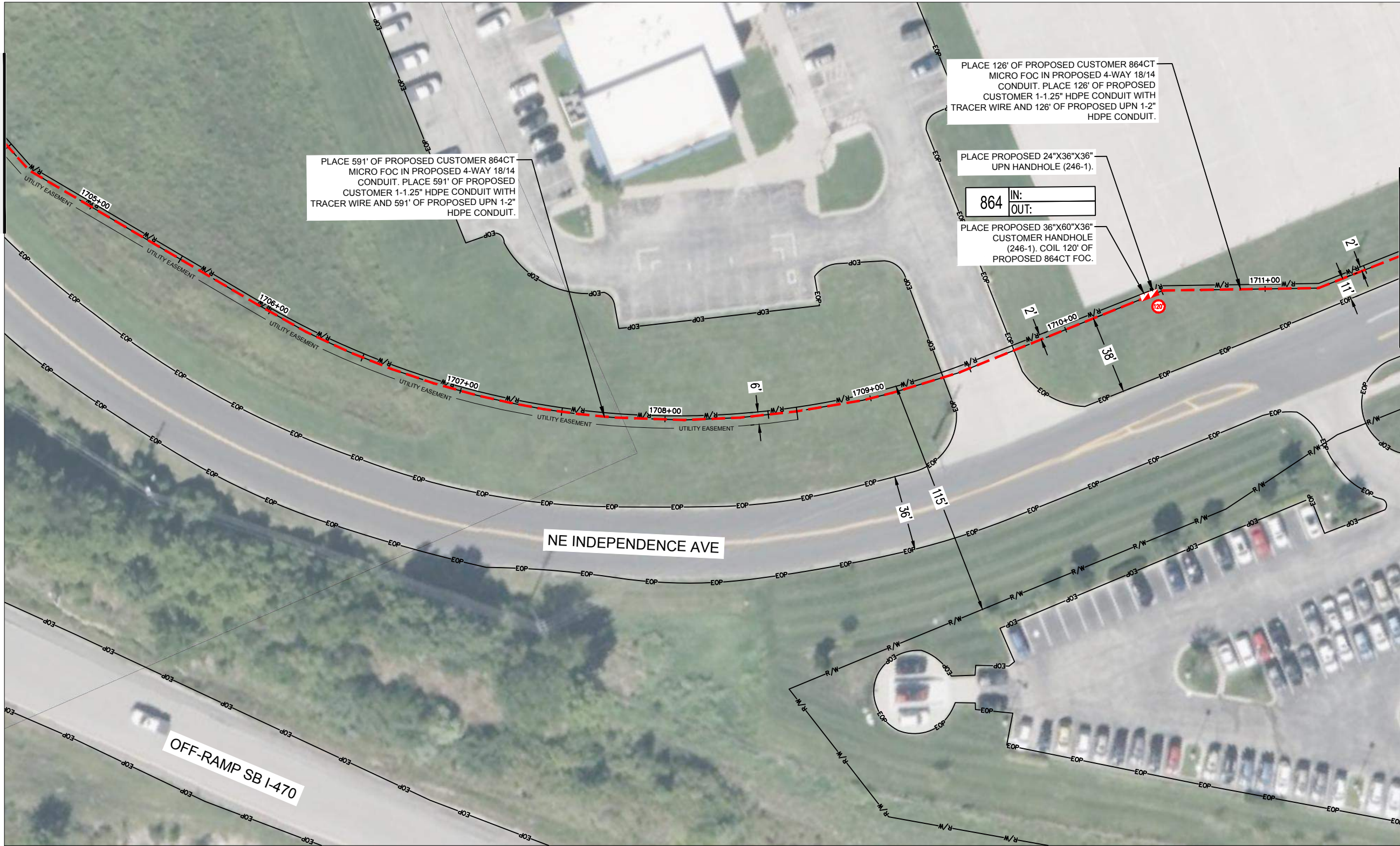


olsson

7301 West 133rd Street, Suite 200
Overland Park, KS 66213-4750
TEL: 913.381.1170
FAX: 913.381.1174
www.olsson.com

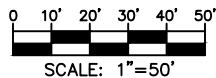
DWG: F:\2024\00001-00500\024-00009\40-design\AutoCAD\msa phases\unite-38 58 mile build\Final Plans\UPN-38_58 Mile_Full Route Alignment
DATE: Aug 29, 2024 8:58am XREFS: phase 1 sheet alignment phase 1_row CCR_CTS_MAIN UPN-38_58 Mile_Full Route Alignment USER: avellani

MATCH TO SHEET 245



MATCH TO SHEET 247

NOTE:
1. **MODOT:** OLSSON ASSUMES NO RESPONSIBILITY FOR EXISTING UTILITY LOCATIONS (HORIZONTAL OR VERTICAL) OR RIGHT-OF-WAY PLACEMENT. THE EXISTING UTILITIES AND RIGHT-OF-WAY SHOWN ON THESE PLANS HAVE BEEN PLOTTED FROM THE BEST INFORMATION AVAILABLE. IT IS HOWEVER, THE RESPONSIBILITY OF THE CONTRACTOR TO FIELD VERIFY THE LOCATION OF ALL UTILITIES AND RIGHT-OF-WAY PRIOR TO COMMENCEMENT OF ANY CONSTRUCTION. MODOT REQUIRES UTILITIES TO BE PLACED IN THE LAST 6' OF THEIR RIGHT-OF-WAY IN THE "UTILITY COORIDOR" IN HDPE CONDUIT RUNNING PARALLEL AT A 30" MINIMUM DEPTH AND PERPENDICULAR CROSSINGS AT A 72" MINIMUM DEPTH. PERPENDICULAR CROSSINGS MAY BE PLACED AT A 48" MINIMUM DEPTH IF PLACED IN STEEL CONDUIT.



drawn by: RMS
checked by: AFV
approved by: JMC
project no.: 41296
drawing no.: UPN-38
date: 8/29/2024

SHEET
246 OF 456

PROJECT SHEET

PROJECT NUMBER: 41296

MISSOURI

2024

REVISIONS DESCRIPTION

DATE

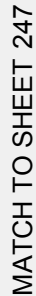
REV. NO.

REVISIONS



olsson

7301 West 133rd Street, Suite 200
Overland Park, KS 66213-4750
TEL: 913.381.1170
FAX: 913.381.1174
www.olsson.com

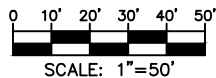
USER: avellani
file_Full Route Alignment

PLACE 662' OF PROPOSED CUSTOMER 864CT
MICRO FOC IN PROPOSED 4-WAY 18/14 CONDUIT.
PLACE 662' OF PROPOSED CUSTOMER 1-1.25"
HDPE CONDUIT WITH TRACER WIRE AND 662' OF
PROPOSED UPN 1-2" HDPE CONDUIT.

NE INDEPENDENCE AVE

PRIVATE DRIVE

MATCH TO SHEET 249

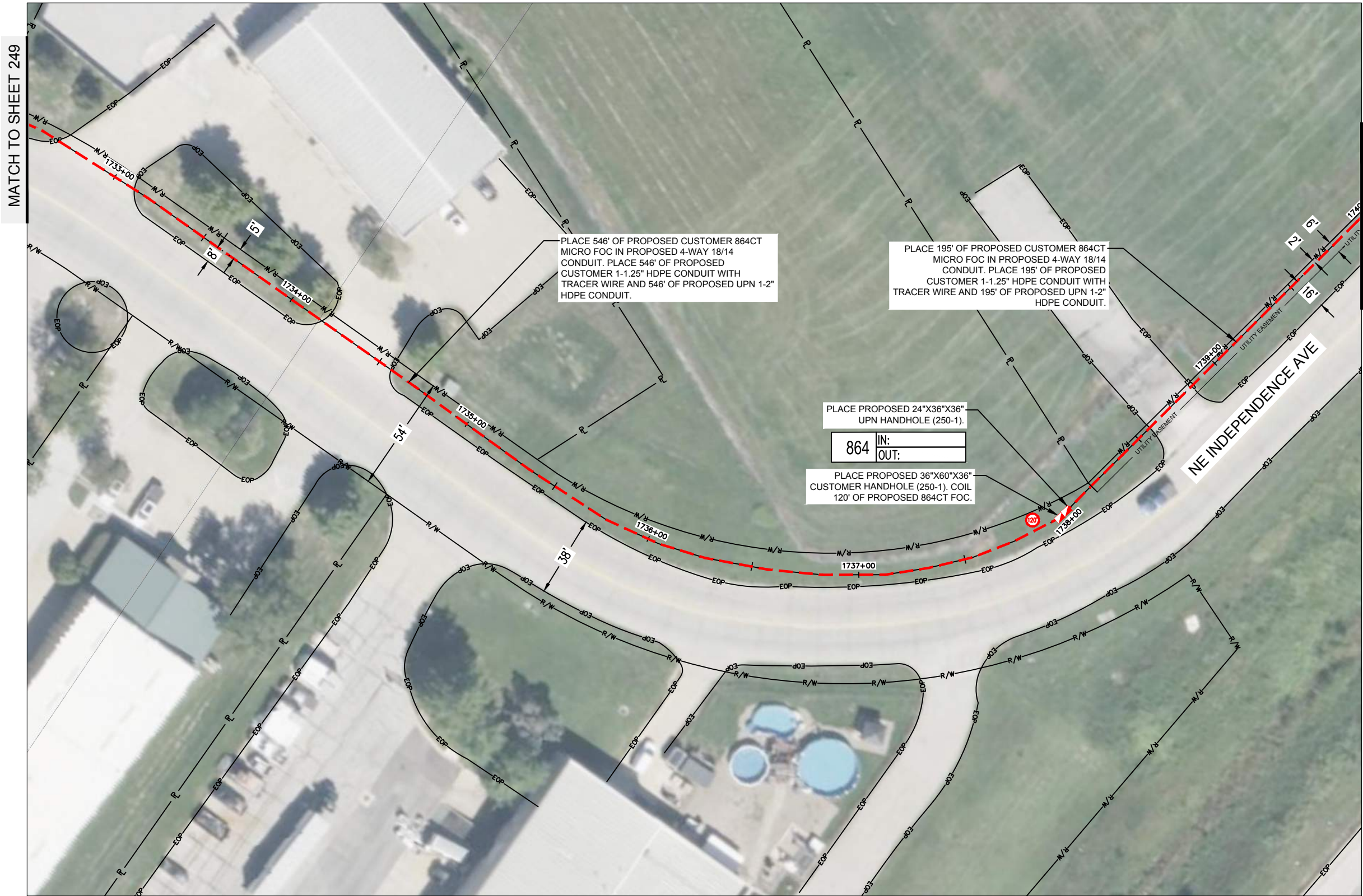


drawn by: _____ RMS
checked by: _____ AFV
approved by: _____ JMC
project no.: _____ 41296
drawing no.: _____ UPN-38
date: _____ 8/29/2024

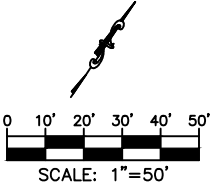


7301 West 133rd Street, Suite 200
Overland Park, KS 66213-4750
TEL 913.381.1170
FAX 913.381.1174
www.dlsson.com

DWG: F:\2024\00001-00500\024-00009\40-design\AutoCAD\msa phases\unite-38 58 mile build\Final Plans\UPN-38_58 Mile_Route Sheets.dwg USER: avellani
DATE: Aug 29, 2024 8:59am XREFS: phase 1 sheet alignment phase 1_row phase 1 southern half CCR_CTS_MAIN UPN-38_58 Mile_Route Alignment



NOTE:
1. **MODOT:** OLSSON ASSUMES NO RESPONSIBILITY FOR EXISTING UTILITY LOCATIONS (HORIZONTAL OR VERTICAL) OR RIGHT-OF-WAY PLACEMENT. THE EXISTING UTILITIES AND RIGHT-OF-WAY SHOWN ON THESE PLANS HAVE BEEN PLOTTED FROM THE BEST INFORMATION AVAILABLE. IT IS HOWEVER, THE RESPONSIBILITY OF THE CONTRACTOR TO FIELD VERIFY THE LOCATION OF ALL UTILITIES AND RIGHT-OF-WAY PRIOR TO COMMENCEMENT OF ANY CONSTRUCTION. MODOT REQUIRES UTILITIES TO BE PLACED IN THE LAST 6' OF THEIR RIGHT-OF-WAY IN THE "UTILITY COORIDOR" IN HDPE CONDUIT RUNNING PARALLEL AT A 30" MINIMUM DEPTH AND PERPENDICULAR CROSSINGS AT A 72" MINIMUM DEPTH. PERPENDICULAR CROSSINGS MAY BE PLACED AT A 48" MINIMUM DEPTH IF PLACED IN STEEL CONDUIT.



PROJECT SHEET		REVISIONS	
		REV. NO.	DATE
PROJECT NUMBER: 41296			
MISSOURI			
		2024	

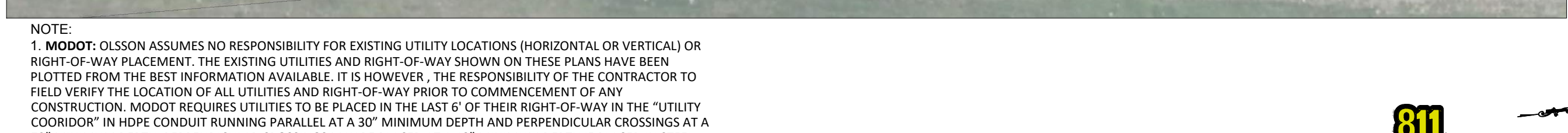
drawn by:	RMS
checked by:	AFV
approved by:	JMC
project no.:	41296
drawing no.:	UPN-38
date:	8/29/2024
SHEET	
250	OF 456



olsson

7301 West 133rd Street, Suite 200
Overland Park, KS 66213-4750
TEL: 913.381.1170
FAX: 913.381.1174
www.olson.com

DWG: F:\2024\00001-00500\0
DATE: Aug 29, 2024 8:59am

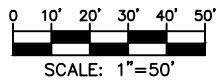


1. **MODOT:** OLSSON ASSUMES NO RESPONSIBILITY FOR EXISTING UTILITY LOCATIONS (HORIZONTAL OR VERTICAL) OR RIGHT-OF-WAY PLACEMENT. THE EXISTING UTILITIES AND RIGHT-OF-WAY SHOWN ON THESE PLANS HAVE BEEN PLOTTED FROM THE BEST INFORMATION AVAILABLE. IT IS HOWEVER, THE RESPONSIBILITY OF THE CONTRACTOR TO FIELD VERIFY THE LOCATION OF ALL UTILITIES AND RIGHT-OF-WAY PRIOR TO COMMENCEMENT OF ANY CONSTRUCTION. MODOT REQUIRES UTILITIES TO BE PLACED IN THE LAST 6' OF THEIR RIGHT-OF-WAY IN THE "UTILITY COORIDOR" IN HDPE CONDUIT RUNNING PARALLEL AT A 30" MINIMUM DEPTH AND PERPENDICULAR CROSSINGS AT A 72" MINIMUM DEPTH. PERPENDICULAR CROSSINGS MAY BE PLACED AT A 48" MINIMUM DEPTH IF PLACED IN STEEL CONDUIT.

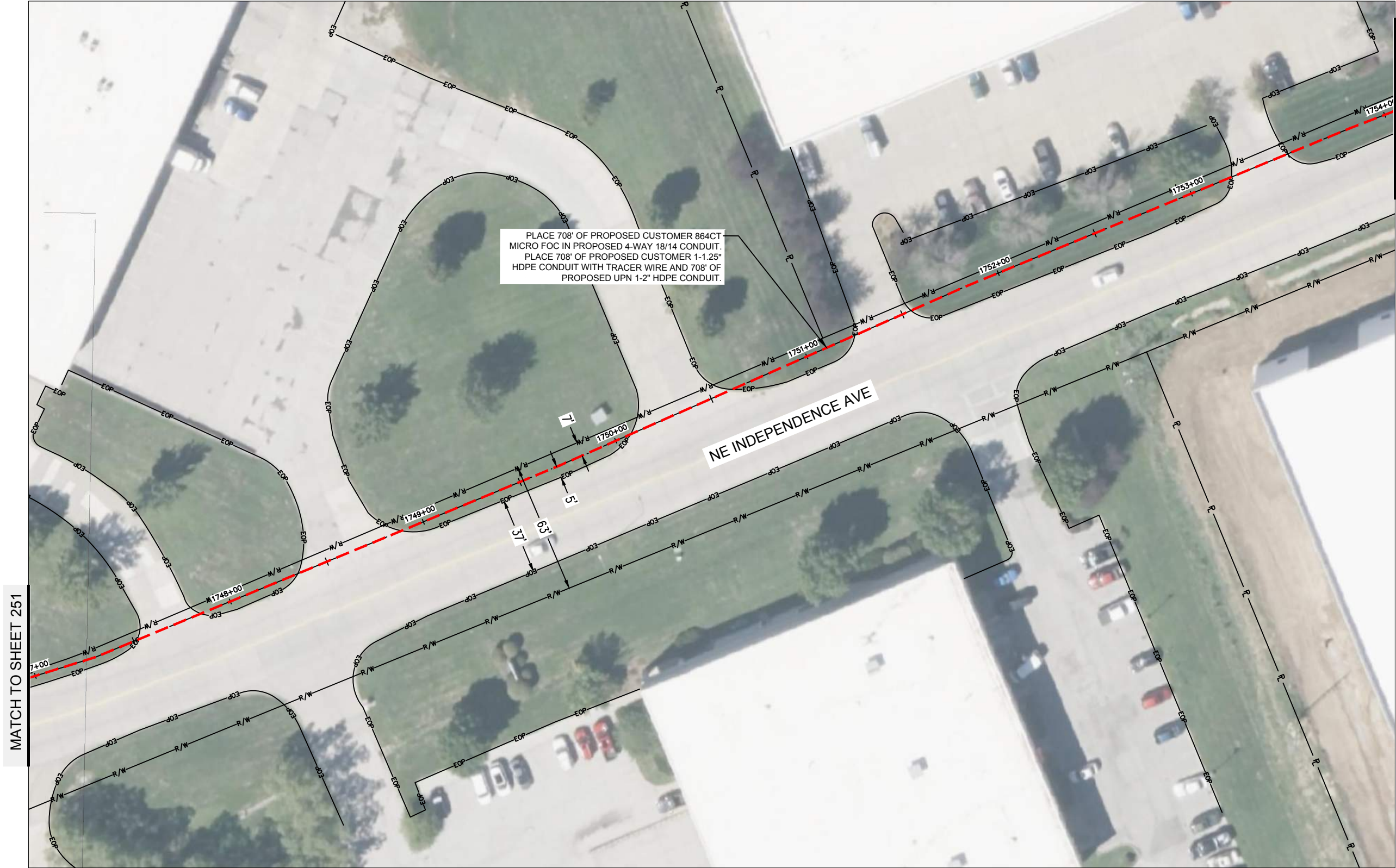
PLACE PROPOSED 36"X60"X36"
CUSTOMER HANDHOLE (251-1).
COIL 120' OF PROPOSED
864CT FOC.

SB I-470/HWY 291

MATCH TO SHEET 252

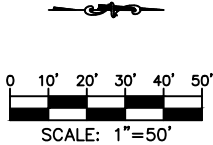


DWG: F:\2024\00001-00500\024-00009\40-design\AutoCAD\msa phases\unite-38 58 mile build\Final Plans\UPN-38_58 Mile_Project Sheets.dwg USER: avellani
DATE: Aug 29, 2024 8:59am XREFS: phase 1 sheet alignment phase 1_row phase 1 southern half CCR_CTS_MAIN UPN-38_58 Mile_Full Route Alignment



MATCH TO SHEET 251

MATCH TO SHEET 253



drawn by: RMS
checked by: AFV
approved by: JMC
project no.: 41296
drawing no.: UPN-38
date: 8/29/2024

SHEET
252 OF 456

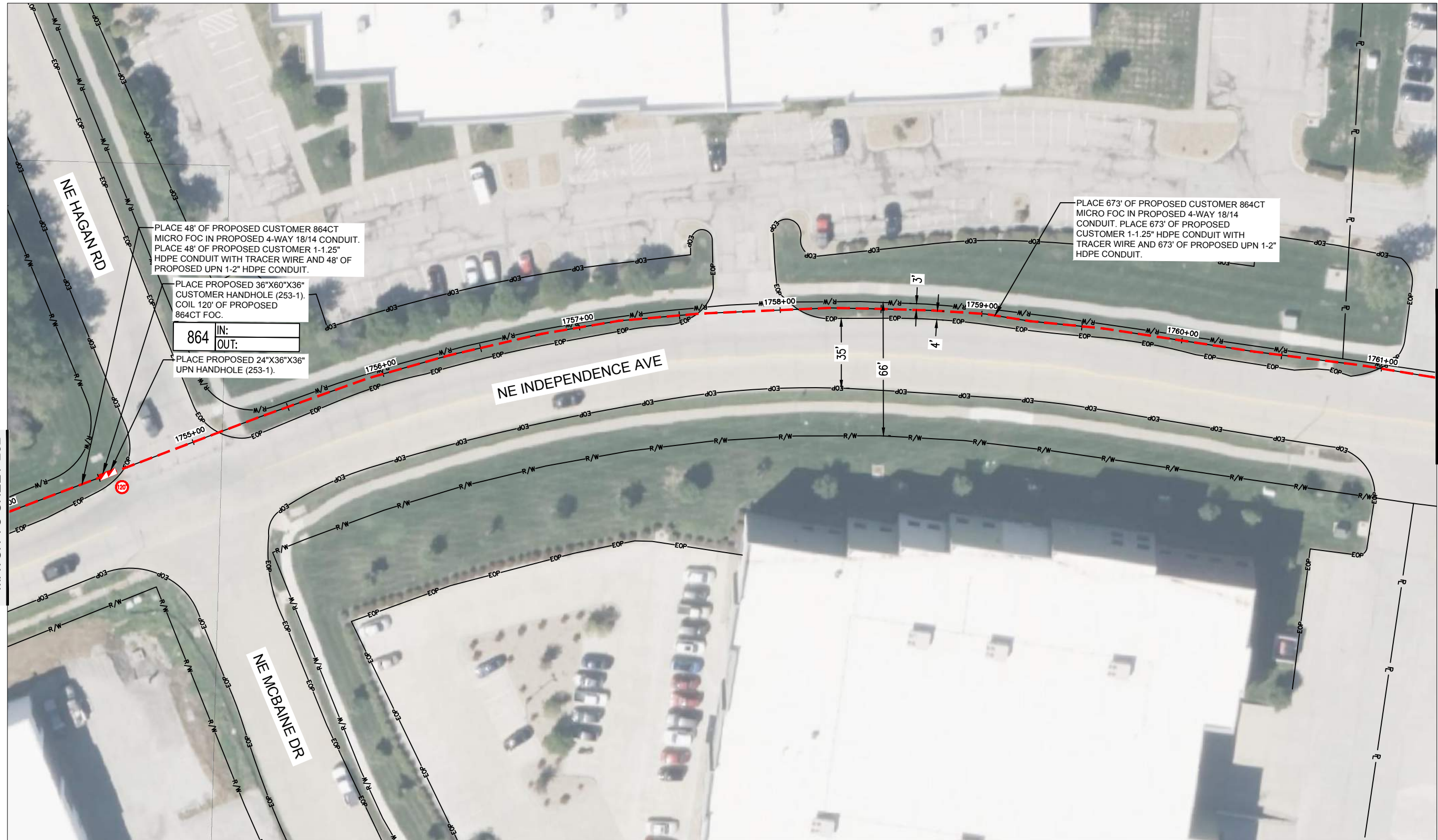
PROJECT SHEET		REVISIONS	
PROJECT NUMBER: 41296		2024	
MISSOURI			
REV. NO.	DATE	REVISIONS DESCRIPTION	



olsson

7301 West 133rd Street, Suite 200 TEL: 913.381.1170
Overland Park, KS 66213-4750 FAX: 913.381.1174 www.olson.com

DWG: F:\200001\024-00009\40-design\AutoCAD\msa_phases\unit-38_58_mile\build\Final Plans\UPN-38_58_Mile_Project Sheets.dwg USER: aveliani
DATE: Aug 29, 2024 8:59am XREFS: phase 1 sheet alignment phase 1 row phase 1 southern half CCR_CTS_MAIN UPN-38_58 Mile_Full Route Alignment



MATCH TO SHEET 252

MATCH TO SHEET 254

PROJECT SHEET

PROJECT NUMBER: 41296

MISSOURI

2024

REVISIONS DESCRIPTION

DATE _____

REV. NO.

LL

CHC

○
○
○

draw
che
appr
appldraw
date

SHEET
53 OF 4

Drawn by:	RMS
Checked by:	AFV
Approved by:	JMC
Project no.:	41296
Drawing no.:	UPN-38
Date:	8/29/2024



Know what's below.
Call before you dig.

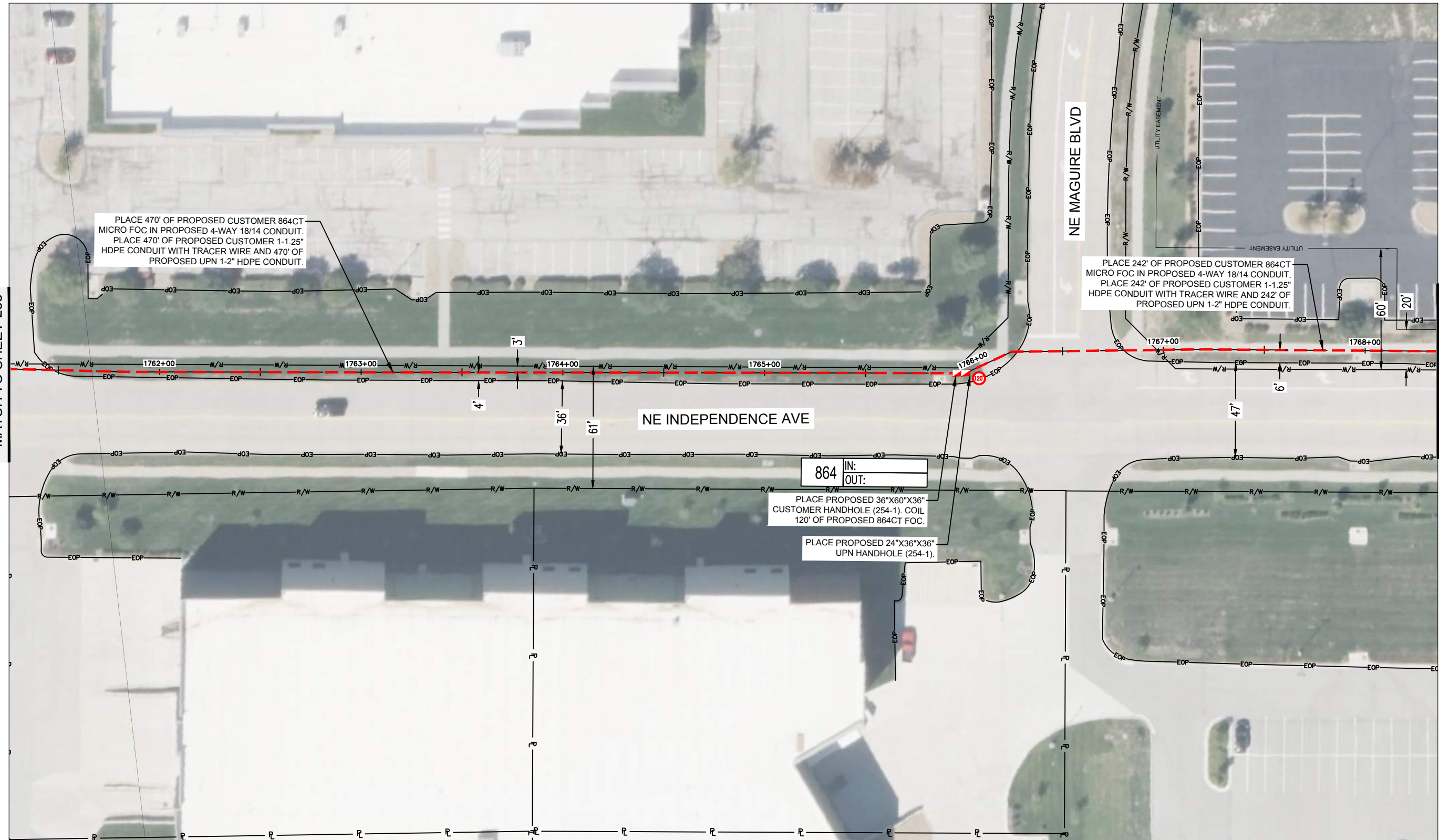


olsson

7301 West 133rd Street, Suite 200
Overland Park KS 66213-4750
TEL 913.381.1170
FAX 913.381.1174
www.dclean.com

DWG: F:\2024\00001\024-00009\40-design\AutoCAD\misc\phases\unit-38.58 mile build\Final Plans\UPN-38.58 Mile_Project Sheets.dwg USER: awelloni
DATE: Aug 29, 2024 8:59am XREFS: phase 1 sheet alignment phase 1_row phase 1 southern half CCR_CTS_MAIN UPN-38.58 Mile_Full Route Alignment

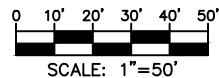
MATCH TO SHEET 253



NOTE: SEE SHEET 452 FOR PLAT INFORMATION.



Know what's below.
Call before you dig.



PROJECT SHEET	drawn by: _____ RMS	REV. NO.	DATE	REVISIONS DESCRIPTION	
	checked by: _____ AFV				
	approved by: _____ JMC				
	project no.: _____ 41296				
	drawing no.: _____ UPN-38				
	date: _____ 8/29/2024				
	PROJECT NUMBER: 41296				
	MISSOURI				
	2024				
	REVISIONS				

SHEET	
254	OF 456

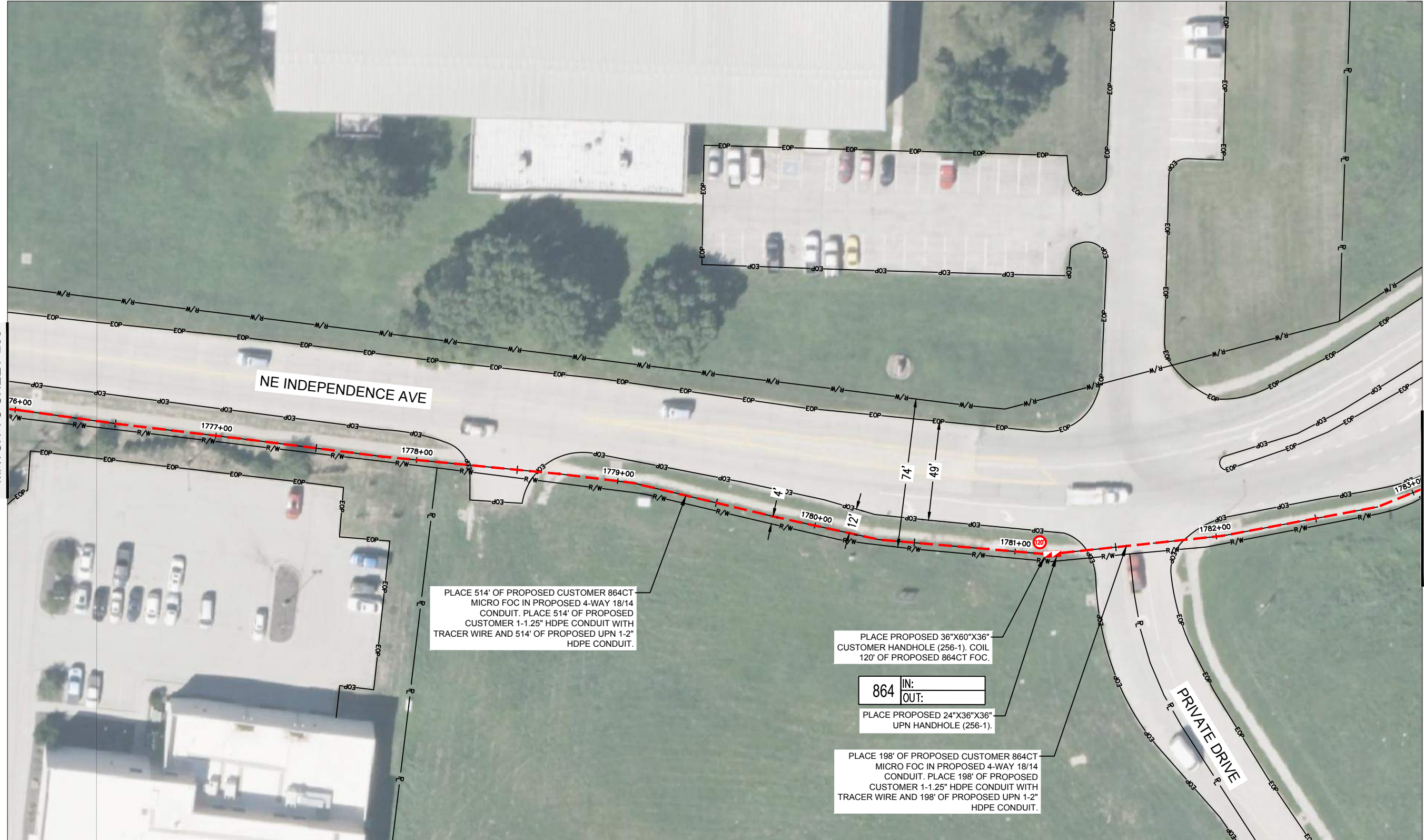


also

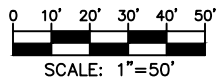
7301 West 133rd Street, Suite 200
Overland Park, KS 66213-4750
TEL 913.381.1170
FAX 913.381.1174
www.dlsson.com

USER: avellani

MATCH TO SHEET 255



Know what's below.
Call before you dig.



drawn by: _____ RMS
checked by: _____ AFV
approved by: _____ JMC
project no.: _____ 41299
drawing no.: _____ UPN-3
date: _____ 8/29/2024

SHEET
256 OF 456

PROJECT SHEET

PROJECT NUMBER: 41296

MISSOURI

2024

2
3
4
5
6
7
8
9
10
11
12
13
14
15
16
17
18
19
20
21
22
23
24
25
26
27
28
29
30
31
32
33
34
35
36
37
38
39
40
41
42
43
44
45
46
47
48
49
50
51
52
53
54
55
56
57
58
59
60
61
62
63
64
65
66
67
68
69
70
71
72
73
74
75
76
77
78
79
80
81
82
83
84
85
86
87
88
89
90
91
92
93
94
95
96
97
98
99
100
101
102
103
104
105
106
107
108
109
110
111
112
113
114
115
116
117
118
119
120
121
122
123
124
125
126
127
128
129
130
131
132
133
134
135
136
137
138
139
140
141
142
143
144
145
146
147
148
149
150
151
152
153
154
155
156
157
158
159
160
161
162
163
164
165
166
167
168
169
170
171
172
173
174
175
176
177
178
179
180
181
182
183
184
185
186
187
188
189
190
191
192
193
194
195
196
197
198
199
200
201
202
203
204
205
206
207
208
209
210
211
212
213
214
215
216
217
218
219
220
221
222
223
224
225
226
227
228
229
230
231
232
233
234
235
236
237
238
239
240
241
242
243
244
245
246
247
248
249
250
251
252
253
254
255
256
257
258
259
260
261
262
263
264
265
266
267
268
269
270
271
272
273
274
275
276
277
278
279
280
281
282
283
284
285
286
287
288
289
290
291
292
293
294
295
296
297
298
299
300
301
302
303
304
305
306
307
308
309
310
311
312
313
314
315
316
317
318
319
320
321
322
323
324
325
326
327
328
329
330
331
332
333
334
335
336
337
338
339
340
341
342
343
344
345
346
347
348
349
350
351
352
353
354
355
356
357
358
359
360
361
362
363
364
365
366
367
368
369
370
371
372
373
374
375
376
377
378
379
380
381
382
383
384
385
386
387
388
389
390
391
392
393
394
395
396
397
398
399
400
401
402
403
404
405
406
407
408
409
410
411
412
413
414
415
416
417
418
419
420
421
422
423
424
425
426
427
428
429
430
431
432
433
434
435
436
437
438
439
440
441
442
443
444
445
446
447
448
449
450
451
452
453
454
455
456
457
458
459
460
461
462
463
464
465
466
467
468
469
470
471
472
473
474
475
476
477
478
479
480
481
482
483
484
485
486
487
488
489
490
491
492
493
494
495
496
497
498
499
500
501
502
503
504
505
506
507
508
509
510
511
512
513
514
515
516
517
518
519
520
521
522
523
524
525
526
527
528
529
530
531
532
533
534
535
536
537
538
539
540
541
542
543
544
545
546
547
548
549
550
551
552
553
554
555
556
557
558
559
560
561
562
563
564
565
566
567
568
569
570
571
572
573
574
575
576
577
578
579
580
581
582
583
584
585
586
587
588
589
590
591
592
593
594
595
596
597
598
599
600
601
602
603
604
605
606
607
608
609
610
611
612
613
614
615
616
617
618
619
620
621
622
623
624
625
626
627
628
629
630
631
632
633
634
635
636
637
638
639
640
641
642
643
644
645
646
647
648
649
650
651
652
653
654
655
656
657
658
659
660
661
662
663
664
665
666
667
668
669
670
671
672
673
674
675
676
677
678
679
680
681
682
683
684
685
686
687
688
689
690
691
692
693
694
695
696
697
698
699
700
701
702
703
704
705
706
707
708
709
710
711
712
713
714
715
716
717
718
719
720
721
722
723
724
725
726
727
728
729
730
731
732
733
734
735
736
737
738
739
740
741
742
743
744
745
746
747
748
749
750
751
752
753
754
755
756
757
758
759
760
761
762
763
764
765
766
767
768
769
770
771
772
773
774
775
776
777
778
779
780
781
782
783
784
785
786
787
788
789
790
791
792
793
794
795
796
797
798
799
800
801
802
803
804
805
806
807
808
809
810
811
812
813
814
815
816
817
818
819
820
821
822
823
824
825
826
827
828
829
830
831
832
833
834
835
836
837
838
839
840
841

25

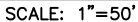
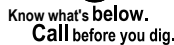
REV.

REVIEWS



olson

7301 West 133rd Street, Suite 200
Overland Park, KS 66213-4750
TEL 913.381.1170
FAX 913.381.1174
www.dlsson.com

F
G

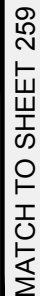
SHEET
257 OF 456

MISSOURI	2024
----------	------

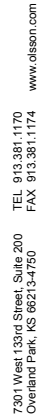
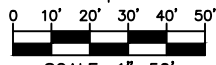
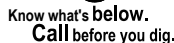
REVISIONS

7301 West 133rd Street, Suite 200
Overland Park, KS 66213-4750
TEL 913.381.1170
FAX 913.381.1174
www.djssson.com

024\00001-00500\024-0



1. **MODOT:** OLSSON ASSUMES NO RESPONSIBILITY FOR EXISTING UTILITY LOCATIONS (HORIZONTAL OR VERTICAL) OR RIGHT-OF-WAY PLACEMENT. THE EXISTING UTILITIES AND RIGHT-OF-WAY SHOWN ON THESE PLANS HAVE BEEN PLOTTED FROM THE BEST INFORMATION AVAILABLE. IT IS HOWEVER, THE RESPONSIBILITY OF THE CONTRACTOR TO FIELD VERIFY THE LOCATION OF ALL UTILITIES AND RIGHT-OF-WAY PRIOR TO COMMENCEMENT OF ANY CONSTRUCTION. MODOT REQUIRES UTILITIES TO BE PLACED IN THE LAST 6' OF THEIR RIGHT-OF-WAY IN THE "UTILITY CORRIDOR" IN HDPE CONDUIT RUNNING PARALLEL AT A 30" MINIMUM DEPTH AND PERPENDICULAR CROSSINGS AT A 72" MINIMUM DEPTH. PERPENDICULAR CROSSINGS MAY BE PLACED AT A 48" MINIMUM DEPTH IF PLACED IN STEEL CONDUIT.



drawn by: _____ RMS
 checked by: _____ AFV
 approved by: _____ JMC
 project no.: _____ 41296
 drawing no.: _____ UPN-38
 date: _____ 8/29/2024

SHEET
258 OF 456