

THE PETROLEUM EQUIPMENT CONTRACTOR'S PROPOSAL SHALL INCLUDE ALL THE NECESSARY EQUIPMENT, HARDWARE, AND ACCESSORIES REQUIRED TO MAKE THE PETROLEUM SYSTEM COMPLETE AND OPERATIONAL

GENERAL NOTES

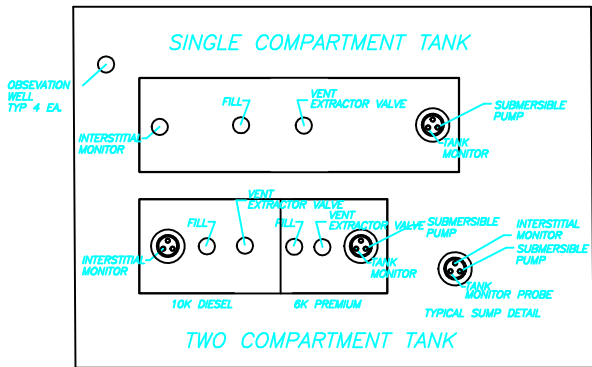
- PETROLEUM PIPING TO BE DUALOY DOUBLE WALL PIPING WITH 2" DUALOY 3000 XL FRP PRIMARY PIPING, AND DUALOY XL 3" SECONDARY CONTAINMENT PIPING, OR APPROVED ALTERNATE
- VENT LINES TO BE 2" FIBERGLASS, BELOW GROUND TO CANOPY COLUMN, OR APPROVED ALTERNATE AND 2" SCHEDULE 40 GALVANIZED STEEL ABOVE GROUND, TO 2' ABOVE CANOPY FASCIA.
- ELECTRICAL CONTRACTOR TO USE APPROVED BULKHEAD FITTINGS AT ALL CONDUIT PENETRATIONS THRU SUMPS AND TURBINES.
- ALL PENETRATIONS THRU SUMPS AND TURBINES TO BE SEALED WITH POLYURETHANE SEALANT.
- ALL DISPENSERS TO BE WIRED ON SAME PHASE WITH NEUTRAL TRIP BREAKERS. THE FUEL PANEL SHALL HAVE A SHUNT TRIP MAIN BREAKER.
- SEE ADDITIONAL NOTES ON ON ELECTRICAL DRAWING.
- ALL ELECTRICAL WORK TO BE IN ACCORDANCE WITH PREVAILING NEC CODES.
- ALL PETROLEUM WORK TO BE IN ACCORDANCE WITH CURRENT EPA TECHNICAL STANDARDS, STATE REGULATIONS, AND NFPA-30.
- ELECTRICAL AND PETROLEUM CONTRACTORS TO VERIFY THAT SPECIFIED WIRING IS PER MANUFACTURERS SPECIFICATIONS FOR EQUIPMENT DELIVERED TO PROJECT. ON TIME.
- THE FIRE MARSHALL OR APPROPRIATE JURISDICTION WILL BE NOTIFIED 48 HOURS IN ADVANCE OF ANY AND ALL INSPECTIONS RELATED TO THE UNDERGROUND TANKS AND PIPING.
- THE FUEL STORAGE TANKS AND DISPENSERS WILL BE INSTALLED IN ACCORDANCE WITH ALL APPLICABLE SECTIONS OF THE CURRENT INTERNATIONAL BUILDING CODE.
- THE DISPENSING DEVICES WILL BE EQUIPPED WITH 3/4" BREAK-A-WAY DEVICES DESIGNED TO MAINTAIN FUEL ON BOTH SIDES OF THE BREAK-A-WAY POINT.
- THE "EMERGENCY PUMP SHUT-OFF" WILL BE LOCATED AT THE CASHIER AND FUEL ISLANDS WITHIN 100' OF THE DISPENSERS. SIGNS ON CANOPY COLUMNS WILL CLEARLY IDENTIFY THE LOCATION.
- THE MASTER SWITCH ON ALL INDIVIDUAL PUMP CIRCUITS SWITCHES SHALL BE TURNED OFF BEFORE CLOSING THE DISPENSING STATION FOR BUSINESS.
- PROVIDE MINIMUM (2A-20BC) FIRE EXTINGUISHERS ON CANOPY COLUMNS NOT TO EXCEED 75'-0" OF DISTANCE BETWEEN THEM.
- ALL THE DISPENSING DEVICES WILL BE BOLTED TO ISLAND FORMS AS SPECIFIED BY MANUFACTURES SPECS.
- ALL SUBMERSIBLE PUMPS WILL HAVE FULL PORT BALL VALVES INSTALLED IN LINE
- ALL PETROLEUM EQUIP. CONDUIT SHALL BE RIGID STEEL 10' OUT FROM CLASS I, DIV. 1, AND CLASS 1 DIV. 2 EXPLOSION PROOF AREAS.
- VERIFY UNDER FLOOR BURIAL DEPTH FOR PVC CONDUIT WITH LOCAL BUILDING OFFICIAL

DISPENSING EQUIPMENT

GILBARCO

TANK MONITOR AND LEAK DETECTION

GILBARCO/VEEDER ROOT TLS-450

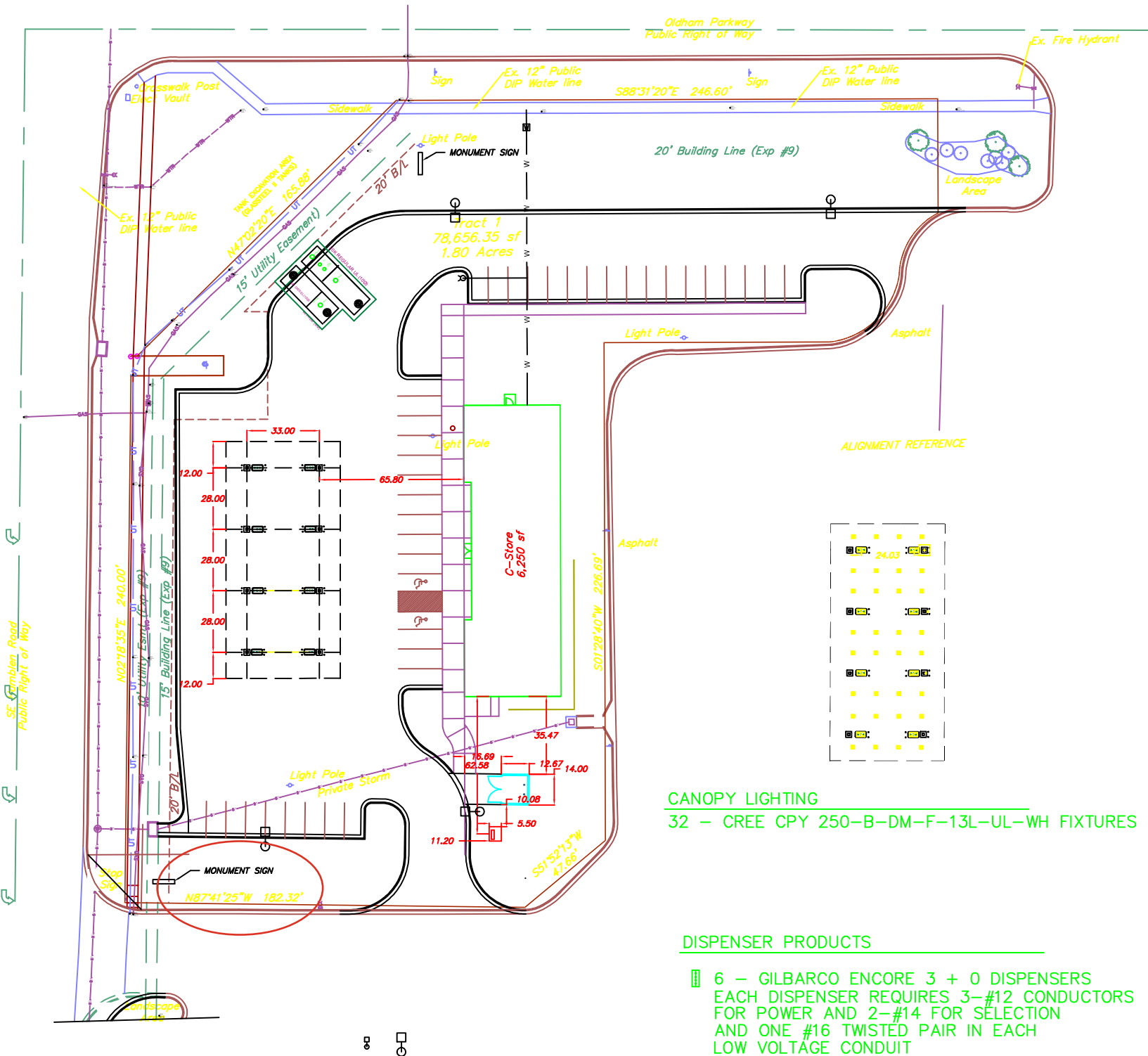


MODERN WELDING COMPANY, INC.
GLASTEEL II JACKETED UNDERGROUND TANK



NOTE: TANKS & PIPING
SHOWN AS REFERENCE ONLY

NOTE: COORDINATE THIS PLAN
WITH THE PROJECT ELECTRICAL PLANS



CANOPY LIGHTING

32 - CREE CPY 250-B-DM-F-13L-UL-WH FIXTURES

DISPENSER PRODUCTS

- 6 - GILBARCO ENCORE 3 + 0 DISPENSERS
EACH DISPENSER REQUIRES 3-#12 CONDUCTORS FOR POWER AND 2-#14 FOR SELECTION AND ONE #16 TWISTED PAIR IN EACH LOW VOLTAGE CONDUIT
- 2 - GILBARCO ENCORE 3 + 1 DISPENSERS
EACH DISPENSER REQUIRES 3-#12 CONDUCTORS FOR POWER AND 3-#14 FOR SELECTION AND ONE #16 TWISTED PAIR IN EACH LOW VOLTAGE CONDUIT