



MiTek, Inc.
16023 Swingley Ridge Rd.
Chesterfield, MO 63017
314.434.1200

Re: 240127
Lot 120 H4

The truss drawing(s) referenced below have been prepared by MiTek USA, Inc. under my direct supervision based on the parameters provided by Wheeler - Waverly.

Pages or sheets covered by this seal: I68545310 thru I68545310

My license renewal date for the state of Missouri is December 31, 2025.

Missouri COA: Engineering 001193



September 30, 2024

Sevier, Scott, Engineer

IMPORTANT NOTE: The seal on these truss component designs is a certification that the engineer named is licensed in the jurisdiction(s) identified and that the designs comply with ANSI/TPI 1. These designs are based upon parameters shown (e.g., loads, supports, dimensions, shapes and design codes), which were given to MiTek or TRENCO. Any project specific information included is for MiTek's or TRENCO's customers file reference purpose only, and was not taken into account in the preparation of these designs. MiTek or TRENCO has not independently verified the applicability of the design parameters or the designs for any particular building. Before use, the building designer should verify applicability of design parameters and properly incorporate these designs into the overall building design per ANSI/TPI 1, Chapter 2.

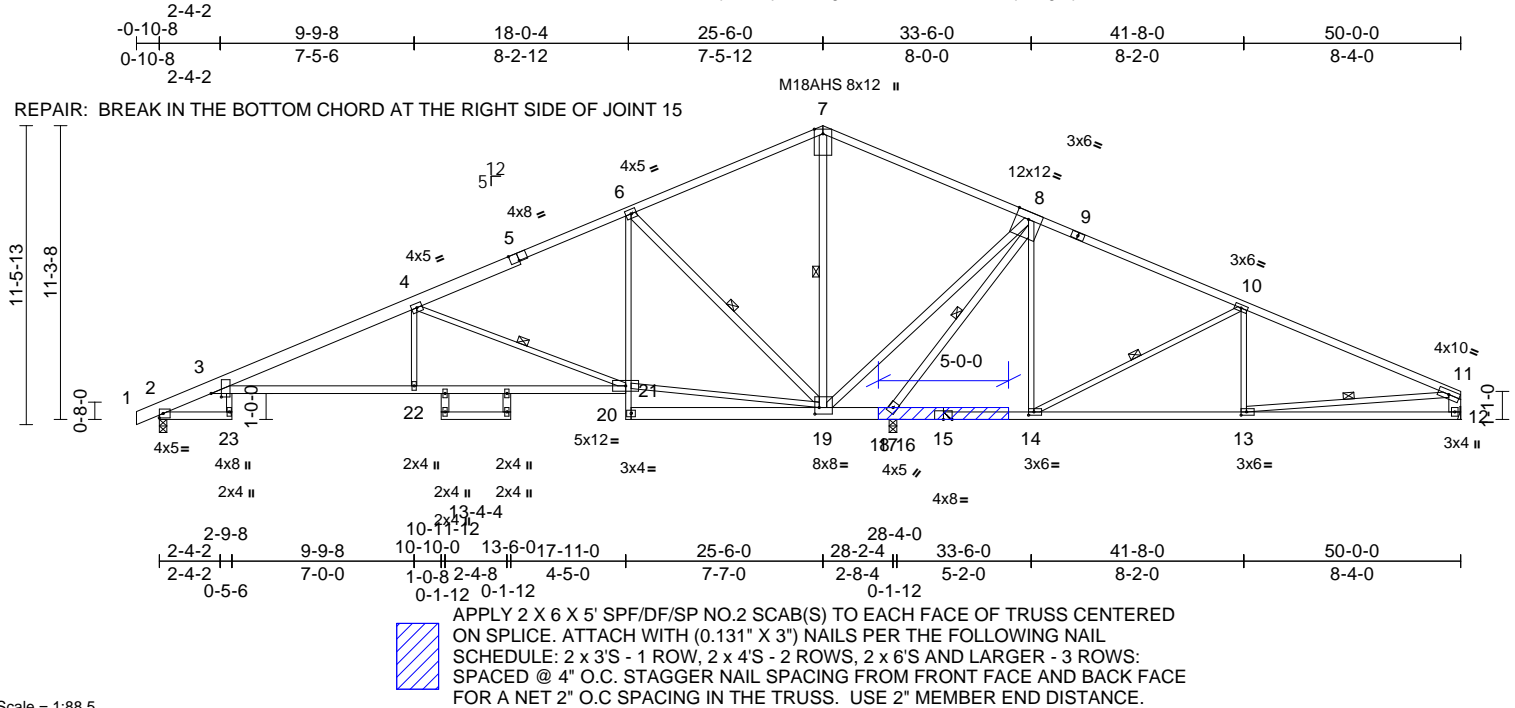
Job	Truss	Truss Type	Qty	Ply	Lot 120 H4	
240127	B8	Roof Special	3	1	Job Reference (optional)	I68545310

Wheeler Lumber, Waverly, KS - 66871,

Run: 8.73 S Aug 15 2024 Print: 8.730 S Aug 15 2024 MiTek Industries, Inc. Fri Sep 27 13:31:09

Page: 1

ID:2ncXplsXOfbjIB6i7Q?gPMzrYWU-RfC?PsB70Hq3NSgPqnL8w3ulTXbGKWrCDoi7J4zJC?i



Scale = 1:88.5

Plate Offsets (X, Y): [3:0-1-10,0-4-11], [5:0-4-0,Edge], [13:0-2-8,0-1-8], [14:0-2-8,0-1-8], [19:0-2-0,0-3-0]

Loading	(psf)	Spacing	2-0-0	CSI	DEFL	in	(loc)	l/defl	L/d	PLATES	GRIP	
TCLL (roof)	25.0	Plate Grip DOL	1.15	TC	0.97	Vert(LL)	-0.29	23	>999	360	MT20	197/144
TCDL	10.0	Lumber DOL	1.15	BC	0.66	Vert(CT)	-0.56	3-22	>602	240	M18AHS	142/136
BCLL	0.0	Rep Stress Incr	YES	WB	0.99	Horz(CT)	0.25	17	n/a	n/a		
BCDL	10.0	Code	IRC2018/TPI2014	Matrix-S							Weight: 254 lb	FT = 10%

LUMBER

TOP CHORD	2x4 SPF No.2 *Except* 1-5:2x6 SP 2400F 2.0E
BOT CHORD	2x4 SPF No.2 *Except* 6-20:2x3 SPF No.2, 20-15,18-16:2x6 SP 2400F 2.0E
WEBS	2x3 SPF No.2 *Except* 24-25,26-27,19-6,19-7,19-8:2x4 SPF No.2, 12-11:2x6 SPF No.2, 17-8:2x4 SPF 2100F 1.8E

BRACING

TOP CHORD	Structural wood sheathing directly applied, except end verticals.
BOT CHORD	Rigid ceiling directly applied or 5-4-8 oc bracing.
WEBS	1 Row at midpt 4-21, 6-19, 7-19, 10-14, 11-13, 8-17

REACTIONS

(size)	2=0-3-8, 12= Mechanical, 17= (0-3-8 + bearing block), (req. 0-5-5)
Max Horiz	2=107 (LC 8)
Max Uplift	12=160 (LC 19)
Max Grav	2=871 (LC 19), 12=648 (LC 20), 17=3368 (LC 1)

FORCES

(lb) - Maximum Compression/Maximum Tension	
TOP CHORD	1-2=0/6, 2-3=-384/64, 3-4=-1366/3, 4-6=-135/181, 6-7=0/1067, 7-8=0/1069, 8-10=-61/1128, 10-11=-823/629, 11-12=-576/227
BOT CHORD	2-23=-42/0, 3-22=-29/1262, 21-22=-29/1261, 20-21=0/160, 6-21=0/687, 19-20=-38/8, 17-19=-2891/116, 14-17=-1013/133, 13-14=-548/667, 12-13=-28/308
WEBS	3-23=0/70, 4-21=-1360/82, 19-21=-109/103, 6-19=-1215/86, 7-19=-1240/27, 4-22=0/376, 8-14=0/526, 10-14=-969/43, 10-13=0/380, 8-19=-15/2742, 11-13=-642/362, 8-17=-3613/0

- 2x6 SP 2400F 2.0E bearing block 12" long at jt. 17 attached to front face with 3 rows of 10d (0.131"x3") nails spaced 3" o.c. 12 Total fasteners. Bearing is assumed to be SPF No.2.
- Unbalanced roof live loads have been considered for this design.
- Wind: ASCE 7-16; Vult=115mph (3-second gust) Vasd=91mph; TCDL=6.0psf; BCDL=6.0psf; h=15ft; Cat. II; Exp C; Enclosed; MWFRS (envelope); cantilever left and right exposed; end vertical left and right exposed; Lumber DOL=1.33 plate grip DOL=1.33
- All plates are MT20 plates unless otherwise indicated.
- This truss has been designed for a 10.0 psf bottom chord live load nonconcurrent with any other live loads.
- All bearings are assumed to be SPF No.2.
- Refer to girder(s) for truss to truss connections.
- Provide mechanical connection (by others) of truss to bearing plate capable of withstanding 160 lb uplift at joint 12.
- This truss is designed in accordance with the 2018 International Residential Code sections R502.11.1 and R802.10.2 and referenced standard ANSI/TPI 1.

LOAD CASE(S) Standard



September 30,2024

NOTES

WARNING - Verify design parameters and READ NOTES ON THIS AND INCLUDED MITEK REFERENCE PAGE MII-7473 rev. 1/2/2023 BEFORE USE.

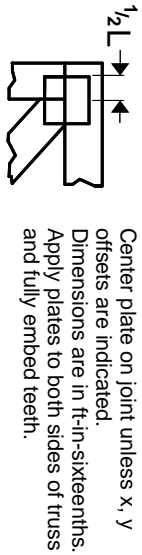
Design valid for use only with MiTek® connectors. This design is based only upon parameters shown, and is for an individual building component, not a truss system. Before use, the building designer must verify the applicability of the design parameters and properly incorporate this design into the overall building design. Bracing indicated is to prevent buckling of individual truss web and/or chord members only. Additional temporary and permanent bracing is always required for stability and to prevent collapse with possible personal injury and property damage. For general guidance regarding the fabrication, storage, delivery, erection and bracing of trusses and truss systems, see **ANSI/TPI1 Quality Criteria, and DSB-22** available from Truss Plate Institute (www.tpinst.org) and **BCSI Building Component Safety Information** available from the Structural Building Component Association (www.sbcscomponents.com)

MiTek®

16023 Swingley Ridge Rd.
Chesterfield, MO 63017
314.434.1200 / MiTek-US.com

Symbols

PLATE LOCATION AND ORIENTATION



For 4 x 2 orientation, locate plates 0- 1/16" from outside edge of truss.

This symbol indicates the required direction of slots in connector plates.

PLATE SIZE

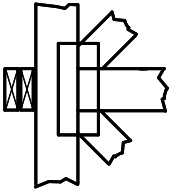
The first dimension is the plate width measured perpendicular to slots. Second dimension is the length parallel to slots.

LATERAL BRACING LOCATION



Indicated by symbol shown and/or by text in the bracing section of the output. Use T or I bracing if indicated.

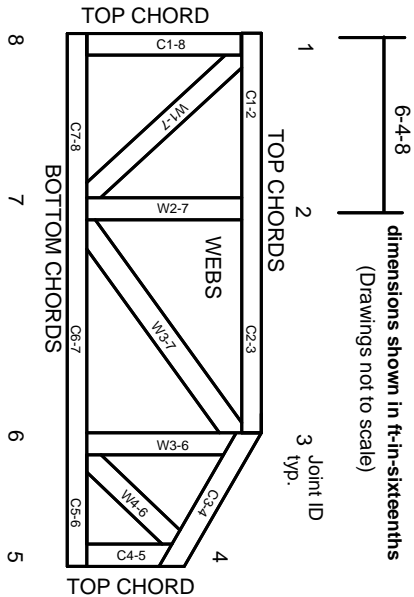
BEARING



Indicates location where bearings (supports) occur. Icons vary but reaction section indicates joint number/letter where bearings occur. Min size shown is for crushing only.

Industry Standards:
ANSI/TP1: National Design Specification for Metal Plate Connected Wood Truss Construction.
DSB-22: Design Standard for Bracing.
BCSI: Building Component Safety Information, Guide to Good Practice for Handling, Installing, Restraining & Bracing of Metal Plate Connected Wood Trusses.

Numbering System



JOINTS ARE GENERALLY NUMBERED/LETTERED CLOCKWISE AROUND THE TRUSS STARTING AT THE JOINT FARTHEST TO THE LEFT.

CHORDS AND WEBS ARE IDENTIFIED BY END JOINT NUMBERS/LETTERS.

Product Code Approvals

ICC-ES Reports:
ESR-1988, ESR-2362, ESR-2685, ESR-3282
ESR-4722, ESL-1388

Design General Notes

Trusses are designed for wind loads in the plane of the truss unless otherwise shown.
Lumber design values are in accordance with ANSI/TP1 1 section 6.3 These truss designs rely on lumber values established by others.

© 2023 MITek® All Rights Reserved



MITek Engineering Reference Sheet: MII-7473 rev. 1/2/2023

General Safety Notes

Failure to Follow Could Cause Property Damage or Personal Injury

1. Additional stability bracing for truss system, e.g. diagonal or X-bracing, is always required. See BCSI.
2. Truss bracing must be designed by an engineer. For wide truss spacing, individual lateral braces themselves may require bracing, or alternative Tor I bracing should be considered.
3. Never exceed the design loading shown and never stack materials on inadequately braced trusses.
4. Provide copies of this truss design to the building designer, erection supervisor, property owner and all other interested parties.
5. Cut members to bear tightly against each other.
6. Place plates on each face of truss at each joint and embed fully. Knots and wane at joint locations are regulated by ANSI/TP1 1.
7. Design assumes trusses will be suitably protected from the environment in accord with ANSI/TP1 1.
8. Unless otherwise noted, moisture content of lumber shall not exceed 19% at time of fabrication.
9. Unless expressly noted, this design is not applicable for use with fire retardant, preservative treated, or green lumber.
10. Camber is a non-structural consideration and is the responsibility of truss fabricator. General practice is to camber for dead load deflection.
11. Plate type, size, orientation and location dimensions indicated are minimum plating requirements.
12. Lumber used shall be of the species and size, and in all respects, equal to or better than that specified.
13. Top chords must be sheathed or purlins provided at spacing indicated on design.
14. Bottom chords require lateral bracing at 10 ft. spacing, or less, if no ceiling is installed, unless otherwise noted.
15. Connections not shown are the responsibility of others.
16. Do not cut or alter truss member or plate without prior approval of an engineer.
17. Install and load vertically unless indicated otherwise.
18. Use of green or treated lumber may pose unacceptable environmental, health or performance risks. Consult with project engineer before use.
19. Review all portions of this design (front, back, words and pictures) before use. Reviewing pictures alone is not sufficient.
20. Design assumes manufacture in accordance with ANSI/TP1 1 Quality Criteria.
21. The design does not take into account any dynamic or other loads other than those expressly stated.