

REVISION DATES:



PROFESSIONAL SEAL

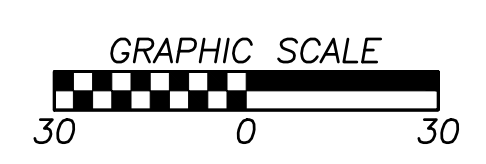
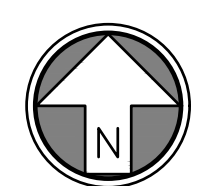
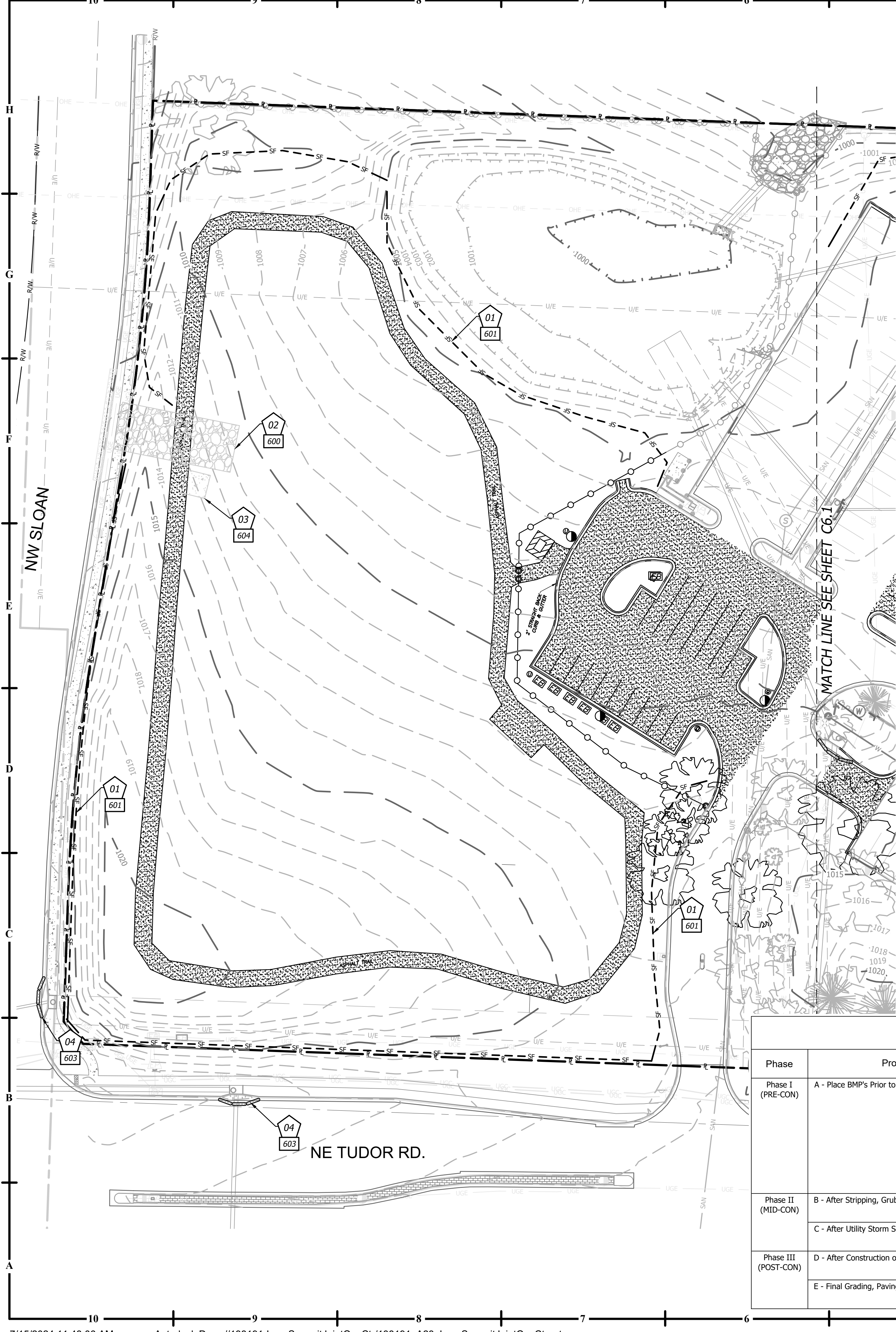
**C6.0**

ISSUE DATE: 2024  
 HOEFER WELKER #: 138191

**EROSION CONTROL PLAN**

**EROSION AND SEDIMENT CONTROL GENERAL NOTES**

- Prior to Land Disturbance activities, the contractor shall:
  - Delineate the outer limits of any natural stream corridor designated with construction fencing.
  - Install perimeter controls and request the inspection of the pre-construction erosion and sediment control measures designated on the approved erosion and sediment control plan. Land disturbance work shall not proceed until there is a satisfactory inspection.
  - Identify the limits of construction on the ground with easily recognizable indications such as construction staking, construction fencing, and placement of physical barriers or other means acceptable to the City Inspector and in conformance with the erosion and sediment control plan.
- The contractor shall comply with all requirements of the Storm Water Pollution Prevention Plan, including but not limited to:
  - The contractor shall seed, mulch, or otherwise stabilize any disturbed area where the land disturbance activity has ceased for more than 14 days.
  - The contractor shall perform inspections of erosion and sediment control measures at the following minimum intervals:
    - During active construction phases - at least once per week
    - During periods of inactivity - at least once per 14 days
    - After each rainfall event of 1/2 inch or more - within 24 hours of the rain event
  - The contractor shall maintain an inspection log including the inspector's name, date of inspection, observations as to the effectiveness of the erosion and sediment control measures, actions necessary to correct deficiencies, when the deficiencies were corrected, and the signature of the person performing the inspection. The inspection log shall be available for review by the regulatory authority.
  - The contractor shall have the erosion and sediment control plan routinely updated to show all changes and amendments to the plan. A copy of the erosion and sediment control plan shall be kept on site and made available for review by the regulatory authority.
- Unless otherwise noted in the plans, all seeding must conform to Division II-Construction and Materials Specification-Section 2150 published by the Kansas City Metropolitan Chapter of the American Public Works Association dated May 21, 2008. Permanent seeding shall be installed after completion of final grading except when seeding will occur outside of the acceptable seeding season as specified in Section 2150. When temporary seeding is installed, permanent seeding shall be installed at the next seeding season. Temporary seeding shall not be used as a stabilization measure for a period exceeding 12 months. The Permit will not be closed until permanent seeding has been established to a minimum of 70% density over the entire disturbed area.
- The contractor shall maintain installed erosion and sediment control devices in a manner that preserves their effectiveness for preventing sediment from leaving the site or entering a sensitive area such as a natural stream corridor, areas of the site intended to be left undisturbed, a storm sewer, or an on-site drainage channel.
- The contractor is responsible for providing erosion and sediment control for the duration of a project. If the City determines that the BMPs in place do not provide adequate erosion and sediment control at any time during the project, the contractor shall install additional or alternate measures that provide effective control.
- Concrete wash or rinse water from concrete mixing equipment, tools and/or ready-mix trucks, tools, etc. may not be discharged into or be allowed to run directly into any existing water body or storm inlet. One or more locations for concrete wash out will be designated on site, such that discharges during concrete washout will be contained in a small area where waste concrete can solidify in place.
- Chemicals or materials capable of causing pollution may only be stored onsite in their original container. Materials stored outside must be in closed and sealed water-proof containers and located outside of drainage ways or areas subject to flooding. Locks and other means to prevent or reduce vandalism shall be used. Spills will be reported as required by law and immediate actions taken to contain them.
- Silt fences and erosion control BMPs which are shown along the back of curb must be installed within two weeks of curb backfill and prior to placement of base asphalt. Exact locations of these erosion control methods may be field adjusted to minimize conflicts with utility construction; however, anticipated disturbance by utility construction shall not delay installation.
- Interior Silt Fence as necessary during construction. Portions may be limited as vegetation is established and hardscape is installed. Entire length may be installed at the contractor's option to aid in stabilizing slopes.
- Private Erosion & Sediment Control inspections are required in accordance with NPDES schedule and requirements. After inspections, provide the City of Lee's Summit with reports and documentation.



**000 DETAILS**

SEE EROSION CONTROL DETAIL SHEET FOR THE FOLLOWING

- 600 TEMPORARY CONSTRUCTION ENTRANCE
- 601 FILTER FABRIC SILT FENCE
- 603 STORM INLET PROTECTION
- 604 CONCRETE WASH-OUT

**EROSION CONTROL LEGEND**

- DISTURBED AREA (1.00 A/C)
- SILT/SEDIMENT FENCE
- INLET PROTECTION FILTER BAGS
- CONSTRUCTION ENTRANCE
- CONCRETE CLEANOUT

**EROSION & SEDIMENT CONTROL STAGING CHART**

Phase	Project Stage	BMP Plan Ref. No.	BMP Description	Remove After Stage:	Notes:
Phase I (PRE-CON)	A - Place BMP's Prior to Land Disturbance	01	Perimeter Silt Fence	E	Place as shown on plan
		02	Concrete Entrance & Staging Area	D	Place as shown on plan
		03	Concrete Wash-Out	D	Place as shown on plan
		04	Existing Inlet Protection	E	Place as shown on plan
Phase II (MID-CON)	B - After Stripping, Grubbing, & Mass Grading	05	Interior Silt Fence	E	Place as shown on plan
	C - After Utility Storm Sewer Construction	06	Storm Inlet Protection	D	Place as shown on plan
Phase III (POST-CON)	D - After Construction of Building and Parking Lot	07	Storm Inlet Protection	E	Place as shown on plan
	E - Final Grading, Paving & Landscaping	08	Final Seeding, Sod, and Landscaping	N/A	Silt fencing & inlet protect may be removed once seed & sodded areas are established on 80% of site. (RE: L1.1 Landscape Plan for the stormwater treatment facility)

REVISION DATES:



PROFESSIONAL SEAL

**C6.1**

ISSUE DATE: 2024  
 HOEFER WELKER #: 138191

**EROSION CONTROL PLAN**

**EROSION AND SEDIMENT CONTROL GENERAL NOTES**

- Prior to Land Disturbance activities, the contractor shall:
  - Delineate the outer limits of any natural stream corridor designated with construction fencing.
  - Install perimeter controls and request the inspection of the pre-construction erosion and sediment control measures designated on the approved erosion and sediment control plan. Land disturbance work shall not proceed until there is a satisfactory inspection.
  - Identify the limits of construction on the ground with easily recognizable indications such as construction staking, construction fencing, and placement of physical barriers or other means acceptable to the City inspector and in conformance with the erosion and sediment control plan.
- The contractor shall comply with all requirements of the Storm Water Pollution Prevention Plan, including but not limited to:
  - The contractor shall seed, mulch, or otherwise stabilize any disturbed area where the land disturbance activity has ceased for more than 14 days.
  - The contractor shall perform inspections of erosion and sediment control measures at the following minimum intervals:
    - During active construction phases - at least once per week
    - During periods of inactivity - at least once per 14 days
    - After each rainfall event of 1/2 inch or more - within 24 hours of the rain event
  - The contractor shall maintain an inspection log including the inspector's name, date of inspection, observations as to the effectiveness of the erosion and sediment control measures, actions necessary to correct deficiencies, when the deficiencies were corrected, and the signature of the person performing the inspection. The inspection log shall be available for review by the regulatory authority.
  - The contractor shall have the erosion and sediment control plan routinely updated to show all changes and amendments to the plan. A copy of the erosion and sediment control plan shall be kept on site and made available for review by the regulatory authority.
- Unless otherwise noted in the plans, all seeding must conform to Division II-Construction and Materials Specification-Section 2150 published by the Kansas City Metropolitan Chapter of the American Public Works Association dated May 21, 2008. Permanent seeding shall be installed after completion of final grading except when seeding will occur outside of the acceptable seeding season as specified in Section 2150. When temporary seeding is installed, permanent seeding shall be installed at the next seeding season. Temporary seeding shall not be used as a stabilization measure for a period exceeding 12 months. The Permit will not be closed until permanent seeding has been established to a minimum of 70% density over the entire disturbed area.
- The contractor shall maintain installed erosion and sediment control devices in a manner that preserves their effectiveness for preventing sediment from leaving the site or entering a sensitive area such as a natural stream corridor, areas of the site intended to be left undisturbed, a storm sewer, or an on-site drainage channel.
- The contractor is responsible for providing erosion and sediment control for the duration of a project. If the City determines that the BMPs in place do not provide adequate erosion and sediment control at any time during the project, the contractor shall install additional or alternate measures that provide effective control.
- Concrete wash or rinse water from concrete mixing equipment, tools and/or ready-mix trucks, tools, etc. may not be discharged into or be allowed to run directly into any existing water body or storm inlet. One or more locations for concrete wash out will be designated on site, such that discharges during concrete washout will be contained in a small area where waste concrete can solidify in place.
- Chemicals or materials capable of causing pollution may only be stored onsite in their original container. Materials stored outside must be in closed and sealed water-proof containers and located outside of drainage ways or areas subject to flooding. Locks and other means to prevent or reduce vandalism shall be used. Spills will be reported as required by law and immediate actions taken to contain them.
- Silt fences and erosion control BMPs which are shown along the back of curb must be installed within two weeks of curb backfill and prior to placement of base asphalt. Exact locations of these erosion control methods may be field adjusted to minimize conflicts with utility construction; however, anticipated disturbance by utility construction shall not delay installation.
- Interior Silt Fence as necessary during construction. Portions may be limited as vegetation is established and hardscape is installed. Entire length may be installed at the contractor's option to aid in stabilizing slopes.
- Private Erosion & Sediment Control inspections are required in accordance with NPDES schedule and requirements. After inspections, provide the City of Lee's Summit with reports and documentation.



**EROSION CONTROL LEGEND**

- DISTURBED AREA (0.00 AC)
- - - SF SILT/SEDIMENT FENCE
- INLET PROTECTION FILTER BAGS
- CONSTRUCTION ENTRANCE
- CONCRETE CLEANOUT

**000 DETAILS**

• SEE EROSION CONTROL DETAIL SHEET FOR THE FOLLOWING

- 600 TEMPORARY CONSTRUCTION ENTRANCE
- 601 FILTER FABRIC SILT FENCE
- 603 STORM INLET PROTECTION
- 604 CONCRETE WASH-OUT

**EROSION & SEDIMENT CONTROL STAGING CHART**

Phase	Project Stage	BMP Plan Ref. No.	BMP Description	Remove After Stage:	Notes:
Phase I (PRE-CON)	A - Place BMP's Prior to Land Disturbance	01	Perimeter Silt Fence	E	Place as shown on plan
		02	Concrete Entrance & Staging Area	D	Place as shown on plan
		03	Concrete Wash-Out	D	Place as shown on plan
		04	Existing Inlet Protection	E	Place as shown on plan
Phase II (MID-CON)	B - After Stripping, Grubbing, & Mass Grading	05	Interior Silt Fence	E	Place as shown on plan
	C - After Utility Storm Sewer Construction	06	Storm Inlet Protection	D	Place as shown on plan
Phase III (POST-CON)	D - After Construction of Building and Parking Lot	07	Storm Inlet Protection	E	Place as shown on plan
	E - Final Grading, Paving & Landscaping	08	Final Seeding, Sod, and Landscaping	N/A	Silt fencing & inlet protect may be removed once seed & sodded areas are established on 80% of site. (RE: L1.1 Landscape Plan for the stormwater treatment facility)

REVISION DATES:

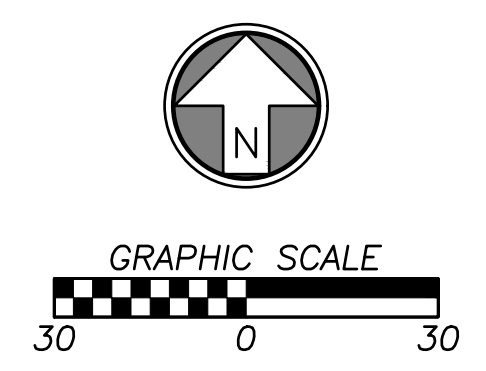


PROFESSIONAL SEAL

**C6.2**

ISSUE DATE: 2024  
 HOEFER WELKER #: 138191

**EROSION CONTROL PLAN**



- 000 DETAILS**  
 • SEE EROSION CONTROL DETAIL SHEET FOR THE FOLLOWING
- 600 TEMPORARY CONSTRUCTION ENTRANCE
  - 601 FILTER FABRIC SILT FENCE
  - 603 STORM INLET PROTECTION
  - 604 CONCRETE WASH-OUT

- EROSION CONTROL LEGEND**
- DISTURBED AREA (0.00 AC)
  - - - SF SILT/SEDIMENT FENCE
  - INLET PROTECTION FILTER BAGS
  - CONSTRUCTION ENTRANCE
  - CONCRETE CLEANOUT

**EROSION & SEDIMENT CONTROL STAGING CHART**

Phase	Project Stage	BMP Plan Ref. No.	BMP Description	Remove After Stage:	Notes:
Phase I (PRE-CON)	A - Place BMP's Prior to Land Disturbance	01	Perimeter Silt Fence	E	Place as shown on plan
		02	Concrete Entrance & Staging Area	D	Place as shown on plan
		03	Concrete Wash-Out	D	Place as shown on plan
		04	Existing Inlet Protection	E	Place as shown on plan
Phase II (MID-CON)	B - After Stripping, Grubbing, & Mass Grading	05	Interior Silt Fence	E	Place as shown on plan
	C - After Utility Storm Sewer Construction	06	Storm Inlet Protection	D	Place as shown on plan
Phase III (POST-CON)	D - After Construction of Building and Parking Lot	07	Storm Inlet Protection	E	Place as shown on plan
	E - Final Grading, Paving & Landscaping	08	Final Seeding, Sod, and Landscaping	N/A	Silt fencing & inlet protect may be removed once seed & sodded areas are established on 80% of site. (RE: L1.1 Landscape Plan for the stormwater treatment facility)

REVISION DATES:

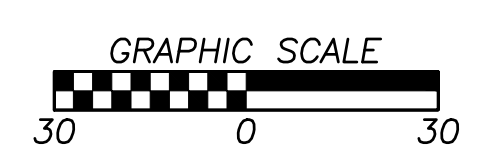
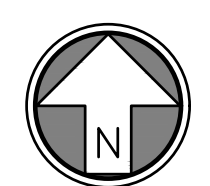
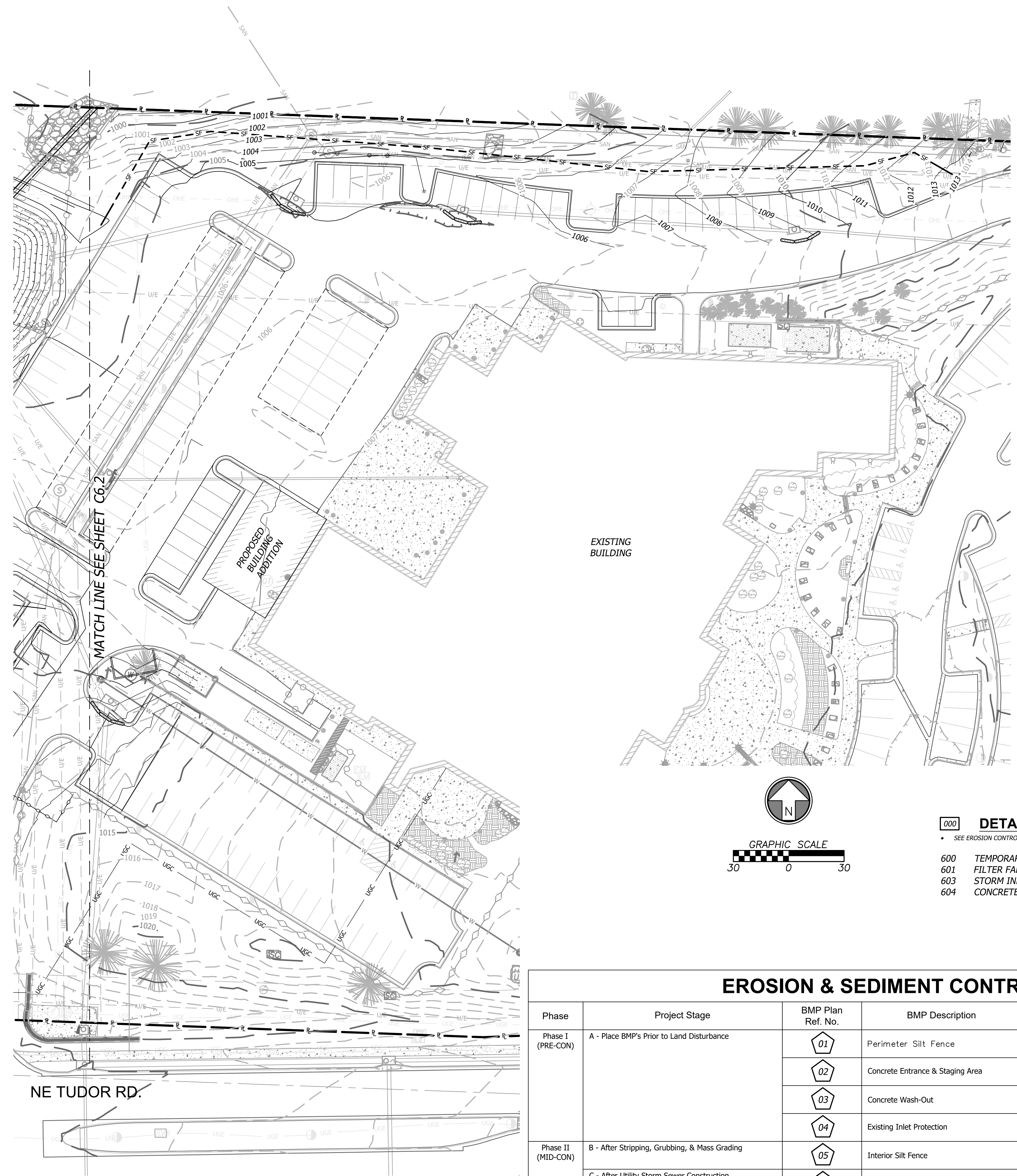


PROFESSIONAL SEAL

**C6.3**

ISSUE DATE: 2024  
 HOEFER WELKER #: 138191

**EROSION CONTROL PLAN**



**EROSION CONTROL LEGEND**

- DISTURBED AREA (0.00 AC)
- SILT/SEDIMENT FENCE
- INLET PROTECTION FILTER BAGS
- CONSTRUCTION ENTRANCE
- CONCRETE CLEANOUT

**000 DETAILS**

- SEE EROSION CONTROL DETAIL SHEET FOR THE FOLLOWING
- 600 TEMPORARY CONSTRUCTION ENTRANCE
- 601 FILTER FABRIC SILT FENCE
- 603 STORM INLET PROTECTION
- 604 CONCRETE WASH-OUT

**EROSION & SEDIMENT CONTROL STAGING CHART**

Phase	Project Stage	BMP Plan Ref. No.	BMP Description	Remove After Stage:	Notes:
Phase I (PRE-CON)	A - Place BMP's Prior to Land Disturbance	01	Perimeter Silt Fence	E	Place as shown on plan
		02	Concrete Entrance & Staging Area	D	Place as shown on plan
		03	Concrete Wash-Out	D	Place as shown on plan
		04	Existing Inlet Protection	E	Place as shown on plan
Phase II (MID-CON)	B - After Stripping, Grubbing, & Mass Grading	05	Interior Silt Fence	E	Place as shown on plan
	C - After Utility Storm Sewer Construction	06	Storm Inlet Protection	D	Place as shown on plan
Phase III (POST-CON)	D - After Construction of Building and Parking Lot	07	Storm Inlet Protection	E	Place as shown on plan
	E - Final Grading, Paving & Landscaping	08	Final Seeding, Sod, and Landscaping	N/A	Silt fencing & inlet protect may be removed once seed & sodded areas are established on 80% of site. (RE: L1.1 Landscape Plan for the stormwater treatment facility)

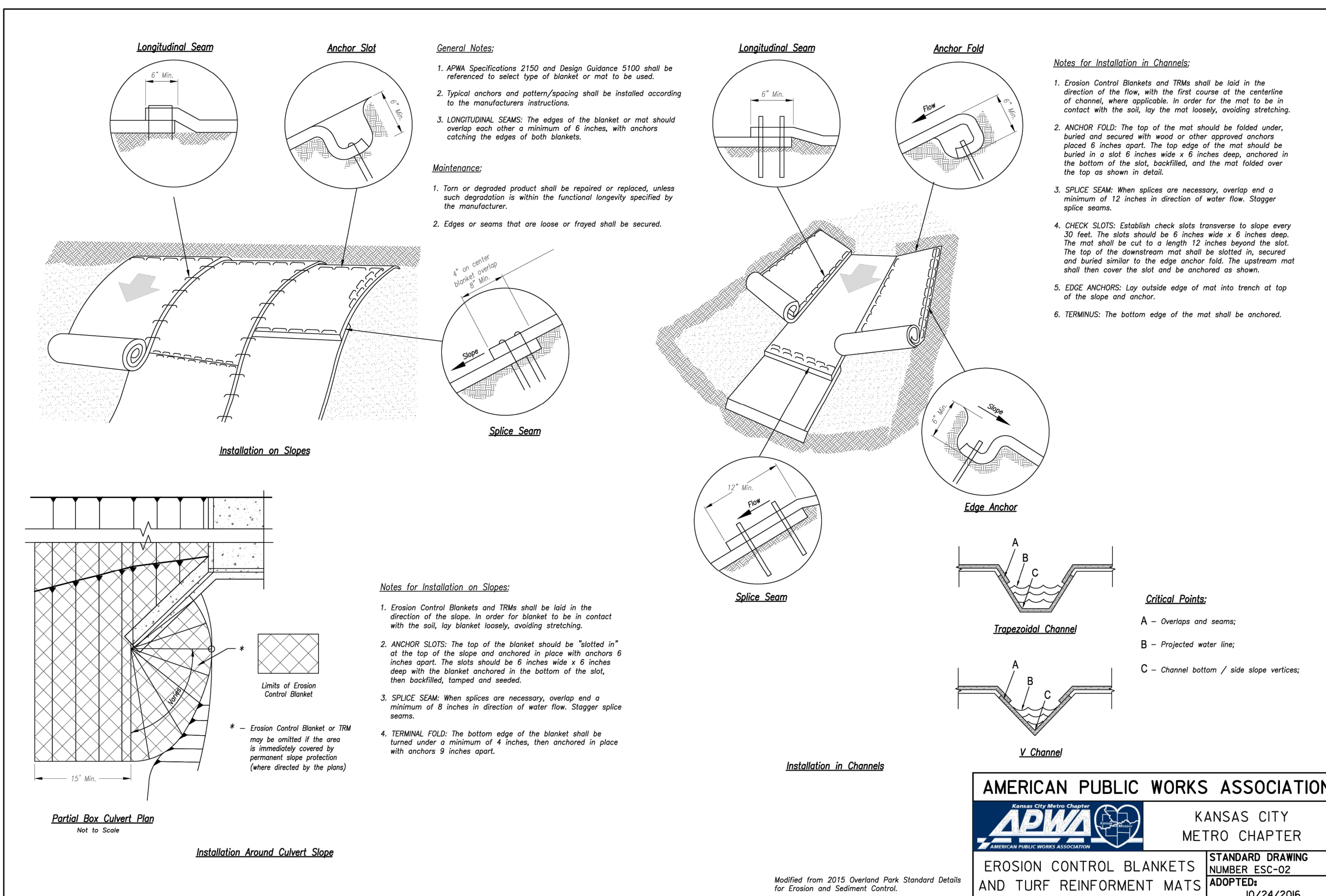
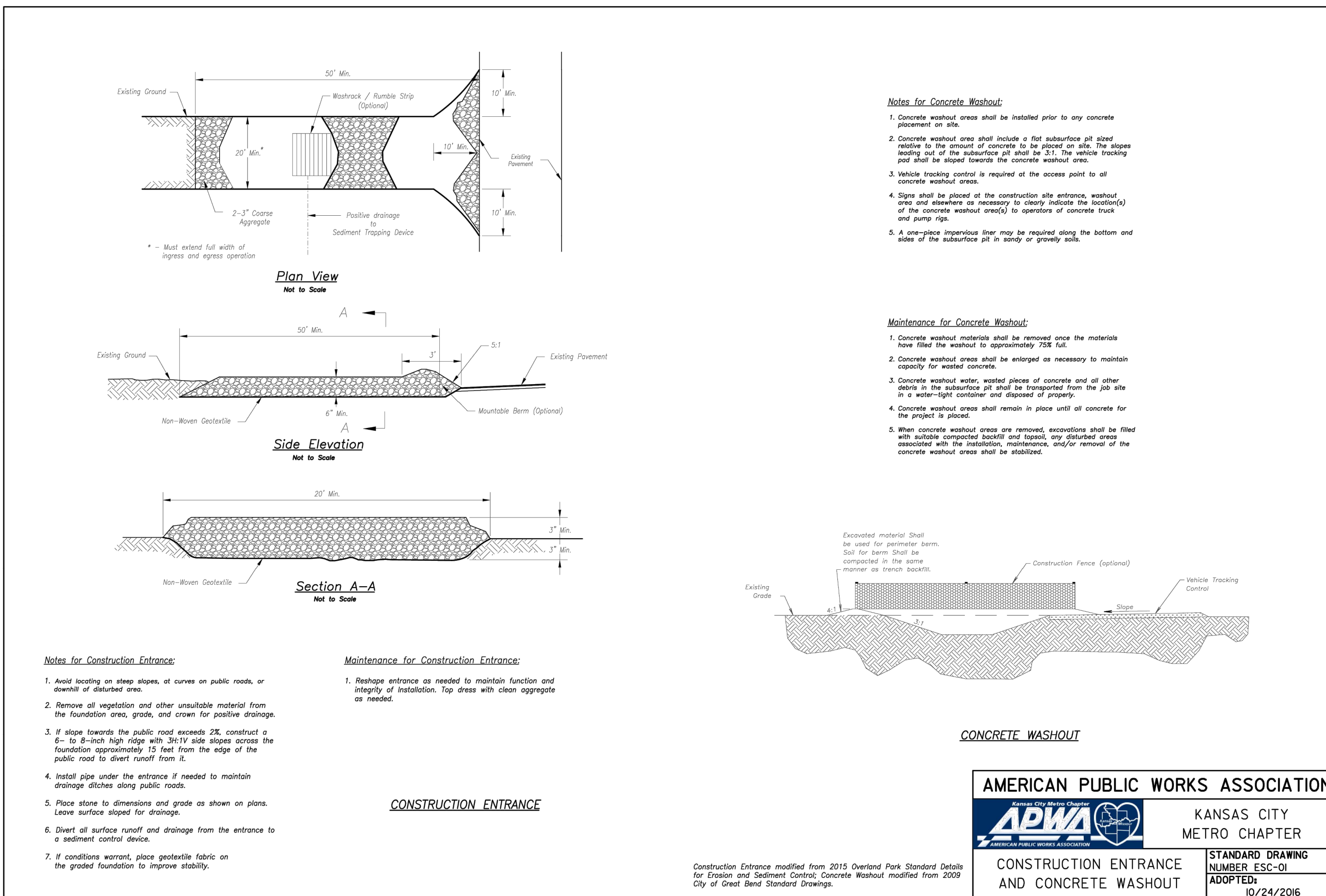
REVISION DATES:



PROFESSIONAL SEAL

**C7.2**  
 ISSUE DATE: 2024  
 HOEFER WELKER #: 138191

EROSION CONTROL DETAILS



REVISION DATES:  
 \_\_\_\_\_  
 \_\_\_\_\_  
 \_\_\_\_\_



PROFESSIONAL SEAL

**C7.3**  
 ISSUE DATE: \_\_\_\_\_ 2024  
 HOEFER WELKER #: 138191

