

**NOTES:**  
 1. DESIGNED PER SECTION 2209 OF THE 2018 IBC.  
 Fa = 1.6 & Ss = 0.1  
 SEISMIC DESIGN CATEGORY: **B**  
 2. STORAGE CAPACITY: **5,000# PER LEVEL**  
 3. STEEL: ASTM **A1011** FOR SHAPE Fy = **55,000** PSI GRADE **55**.  
 4. ALL BOLTS: **A307** (UNLESS OTHERWISE NOTED).  
 5. ANCHORS: HILTI KWIK BOLT TZ 2.  
 6. ANCHORS SHALL BE INSTALLED PER ICC #**ESR-4266**.  
 7. CONCRETE: 7\"/>

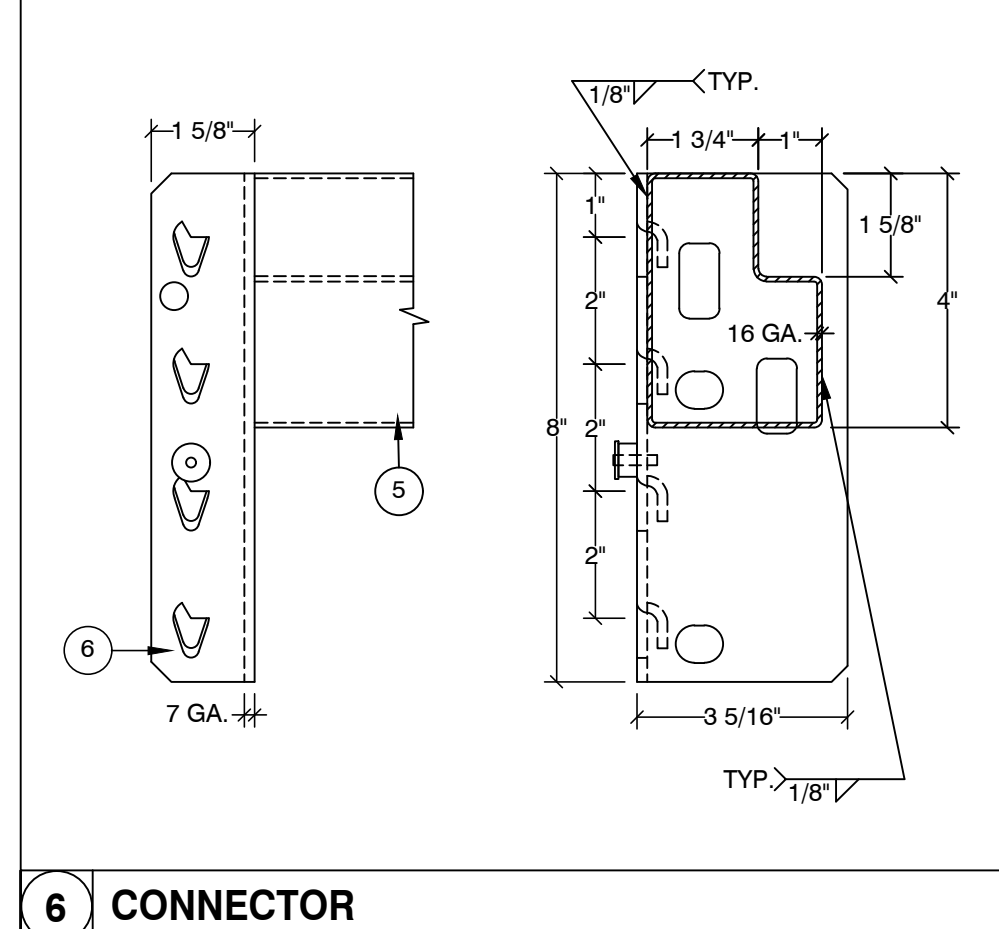
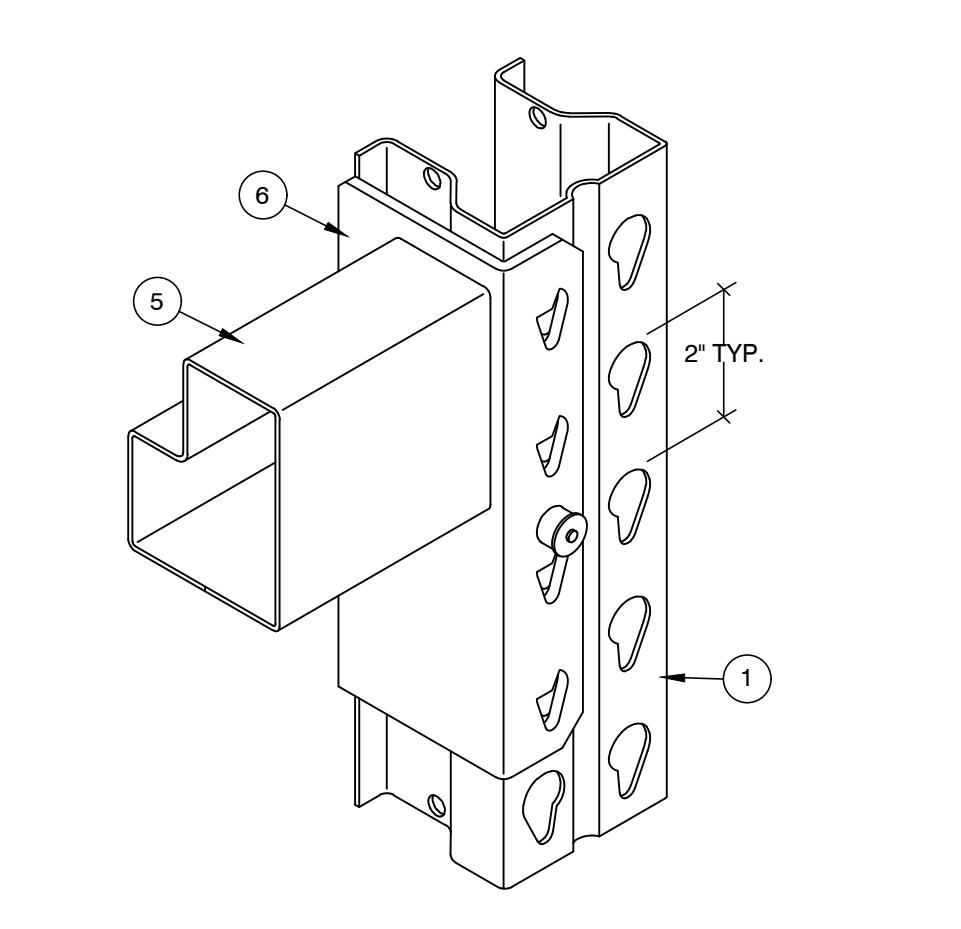
**V-A TYPICAL BRACE TO COLUMN CONNECTION**

**2 BASE PLATE**  
**1 COLUMN**

**3 ANCHOR**

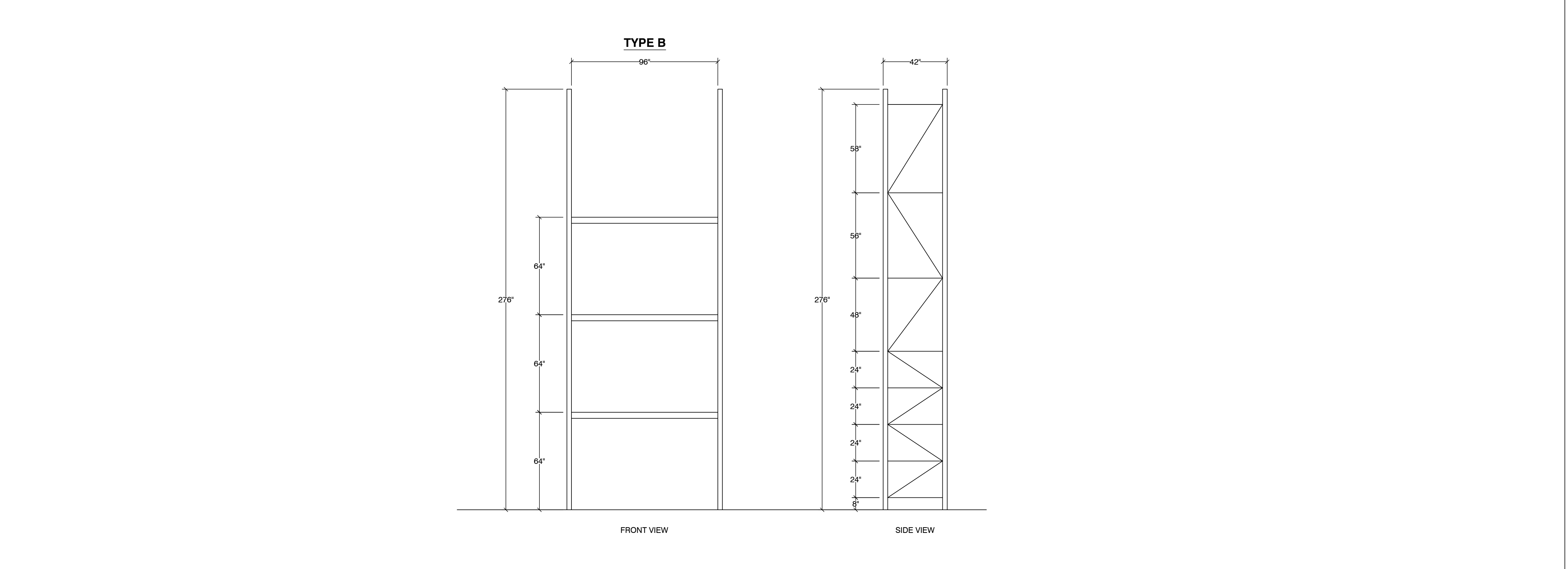
**4 HORIZONTAL & DIAGONAL BRACE**

**GENERAL CONFIGURATION**



**V-B TYPICAL BEAM TO COLUMN CONNECTION**

**6 CONNECTOR**  
**5 BEAM**



**STORAGE RACK ELEVATIONS**

9. THE MAXIMUM TOP TO BOTTOM OUT-OF-PLUMB RATIO AND OUT-OF-STRAIGHT RATIO RACK COLUMN IS 1/240 (FOR EXAMPLE 1/2\"/>

10. THE OWNER SHALL MAINTAIN THE STRUCTURAL INTEGRITY OF THE RACK SYSTEM BY ASSURING PROPER OPERATIONAL, HOUSE KEEPING, AND MAINTENANCE PROCEDURES, BUT NOT LIMITED TO, THE FOLLOWING:  
 A) PROHIBIT ANY OVER LOADING OF ANY PALLET POSITIONS AND OF THE OVERALL RACK SYSTEM.  
 B) REGULARLY INSPECT FOR DAMAGE. IF DAMAGE IS FOUND, IMMEDIATELY UNLOAD THE AFFECTED AREA AND REPLACE OR REPAIR ANY DAMAGED COLUMNS, BEAMS, OR OTHER STRUCTURAL COMPONENTS.  
 C) REQUIRE ALL PALLETS TO BE MAINTAINED IN GOOD, SAFE OPERATING CONDITION.  
 D) ENSURE THAT PALLETS ARE PROPERLY PLACED ONTO PALLET LOAD SUPPORT MEMBERS IN PROPERLY STACKED AND STABLE POSITION.  
 E) REQUIRE THAT ALL GOODS STORED ON EACH PALLET TO BE PROPERLY STACKED AND STABLE.  
 F) PROHIBIT DOUBLE STACKING OF ANY PALLET POSITION, INCLUDING THE TOP MOST POSITION, UNLESS THE RACK SYSTEM IS SPECIFICALLY DESIGNED FOR SUCH LOADING.  
 G) ENSURE THAT THE RACKS ARE NOT MODIFIED OR REARRANGED IN A MANNER NOT WITHIN THE ORIGINAL DESIGN CONFIGURATIONS.

ADDRESS:  
**WALLFLOWER MERCHANDISE**  
 2229 NE TOWN CENTRE BLVD.  
 LEES SUMMIT, MO 64064



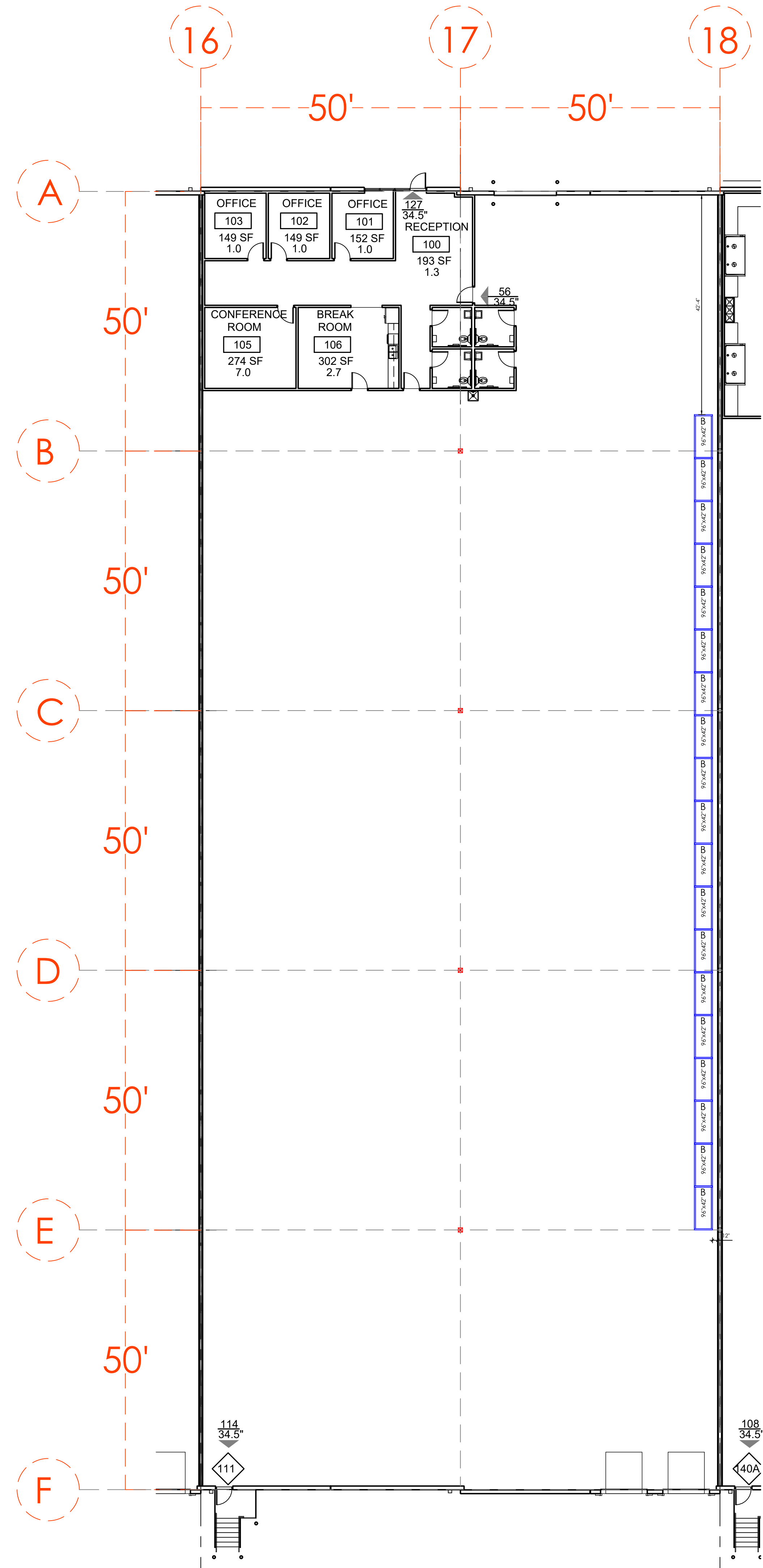
**SEIZMIC**  
 EST. 1985  
**SEIZMIC ENGINEERING, INC.**  
 1130 E. Cypress St.  
 Covina, California 91724  
 Tel. (909) 969-0989

DRAWN BY: M.V. / A.S.  
 DATE: 09/17/24  
 LAST REV. BY:  
 REV. DATE:  
 TYPE: MEC  
 SCALE: N.T.S.  
 APRVD BY: SAL E. FATEEN



DESCRIPTION:  
**STORAGE RACK DETAILS**

DRAWING NUMBER:  
**24-2416-A**



**CUSTOMER APPROVAL**

- APPROVED
- APPROVED AS NOTED
- NOT APPROVED
- REVISE AND RESUBMIT

NOTES: \_\_\_\_\_

NAME: \_\_\_\_\_

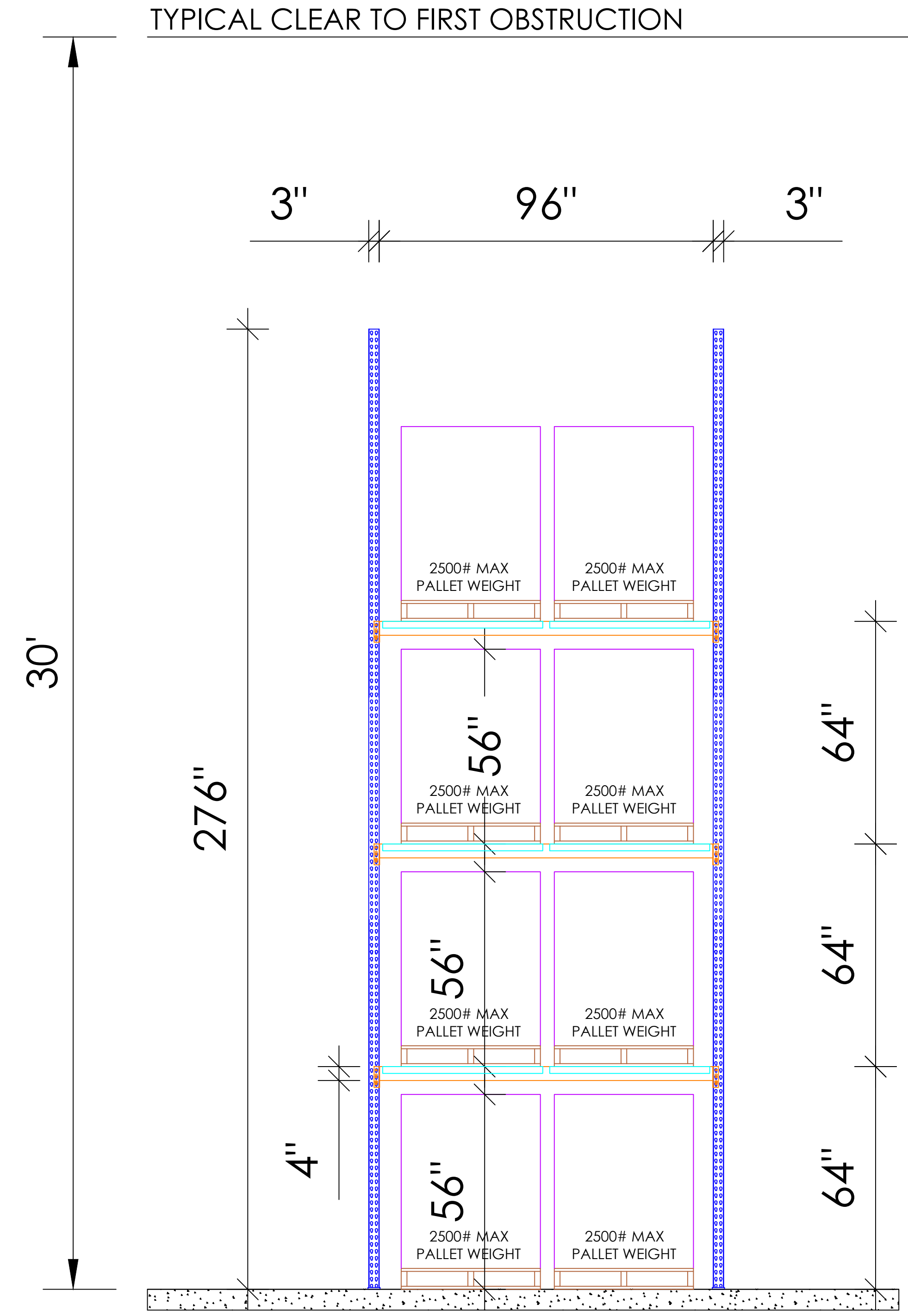
TITLE: \_\_\_\_\_

DATE: \_\_\_\_\_



BAY TYPE	BAY QTY	PALLET POSITIONS
B	19	152

<p>REV   REVISION DESCRIPTION</p> <p>1   INITIAL RELEASE</p>	<p>DWN   DATE</p> <p>TR   8/27/2024</p>	<p>APP  </p> <p>RR  </p>	<p>WALLFLOWER MERCHANDISE</p> <p>2229 NE TOWN CENTRE BLVD</p> <p>LEE'S SUMMIT, MO 64064</p> <p>OVERVIEW LAYOUT</p> <p>WD24-1698 QLO1</p> <p>NIS   9/16/2024 3:20:36 PM</p>
<p><b>SHOPPA'S MATERIAL HANDLING</b></p> <p><b>ADVANCED INTRALOGISTICS</b></p> <p>PROPRIETARY AND CONFIDENTIAL</p> <p>THE INFORMATION CONTAINED IN THIS DRAWING IS THE SOLE PROPERTY OF SHOPPA'S MATERIAL HANDLING. ANY REPRODUCTION IN PART OR AS A WHOLE WITHOUT THE WRITTEN PERMISSION OF SHOPPA'S MATERIAL HANDLING IS PROHIBITED.</p>			



BAY ELEVATION B

**CUSTOMER APPROVAL**

- APPROVED
- APPROVED AS NOTED
- NOT APPROVED
- REVISE AND RESUBMIT

NOTES: \_\_\_\_\_

NAME: \_\_\_\_\_

TITLE: \_\_\_\_\_

DATE: \_\_\_\_\_



REV   REVISION DESCRIPTION	DWN	DATE	APP
	1 INITIAL RELEASE	9/17/2024	RR
<p><b>SHOPPA'S MATERIAL HANDLING</b></p> <p><b>ADVANCED INTRALOGISTICS</b></p> <p>PROPRIETARY AND CONFIDENTIAL</p> <p>THE INFORMATION CONTAINED IN THIS DRAWING IS THE SOLE PROPERTY OF SHOPPA'S MATERIAL HANDLING. ANY REPRODUCTION IN PART OR AS A WHOLE WITHOUT THE WRITTEN PERMISSION OF SHOPPA'S MATERIAL HANDLING IS PROHIBITED.</p>			
WALLFLOWER MERCHANDISE		LEE'S SUMMIT, MO 64064	
2229 NE TOWN CENTRE BLVD		ELEVATION CONFIGURATION	
WD24-1698 D01.		NIS	
9/17/2024 10:00:17 AM			