

CITY OF LEE'S SUMMIT
Development Services Department
220 SE Green Street
Lee's Summit, MO 64063
(816)969-1200
DEVSERVICES.CITYOFLS.NET

Inspection Summary

Permit #: PRCOM20234141
Address: 400 NW CHIPMAN RD, LEES SUMMIT, MO 64086

This work has been inspected and the inspection results noted below. Please schedule inspections once all corrective actions have been completed. Do not cover any work until approved.

Inspection:	Inspector:	Outcome:	Date:
All Rough Inspection - Commercial	Robb Popp	Not Ready	Monday, August 26, 2024

Corrective Action Required:

1 Misc

*INSPECTION FOR WALLS ONLY. ABOVE CEILING NOT READY AT THIS TIME

-Install Simpson PHD2-SDS3 hold downs per plans (at each 6x6)-MISSING AT STUD PACK BETWEEN NORTH WINDOWS

Provide engineered correction for the following

-NAIL STUD PACKS USED IN PLACE OF 6x6 POSTS PER SUBMITTED DOCUMENTS
-Studs at load bearing exterior walls bored greater than 40%-NO CORRECTIONS MADE
-Provide connection detail for I joists to top plate-PROVIDE LADDER FOR INSPECTION

8/26/24

-Not ready fee assessed

Responses to Inspection Summary dated Monday, August 26, 2024

- A Simpson PHD2-SDS3 hold-down has been added at the Stud Pack between the North Windows.
- It is understood that four 2x6 studs have been built-up in lieu of the 6x6 posts as per plan. This is acceptable and the 6x6 posts are not required provided that the built post is nailed together with 10d common nails at a min. spacing of 24" O.C.
- Additional metal channels have been added to the studs identified to reinforce the three locations where the exterior studs have been bored more than 40%. Please see attached detail sketches.
- The TJI's are attached at a min. of two 8d nails, one on each side, toenailing to the bearing plate. The 8d nails are to be placed 1 1/2" from the interior face of the load bearing studs. A ladder to the roof will be available on site at the next inspection.

CITY OF LEE'S SUMMIT
Development Services Department
220 SE Green Street
Lee's Summit, MO 64063
(816)969-1200
DEVSERVICES.CITYOFLS.NET

Inspection Summary

Permit #: PRCOM20234141
Address: 400 NW CHIPMAN RD, LEES SUMMIT, MO 64086

This work has been inspected and the inspection results noted below. Please schedule inspections once all corrective actions have been completed. Do not cover any work until approved.

Inspection:	Inspector:	Outcome:	Date:
All Rough Inspection - Commercial	Robb Popp	Not Ready	Monday, August 26, 2024

Corrective Action Required:
1 Misc

*INSPECTION FOR WALLS ONLY. ABOVE CEILING NOT READY AT THIS TIME

-Install Simpson PHD2-SDS3 hold downs per plans (at each 6x6)-MISSING AT STUD PACK BETWEEN NORTH WINDOWS

Provide engineered correction for the following

-NAIL STUD PACKS USED IN PLACE OF 6x6 POSTS PER SUBMITTED DOCUMENTS
-Studs at load bearing exterior walls bored greater than 40%-NO CORRECTIONS MADE

Provide connection detail for joists to top plate-PROVIDE LADDER FOR INSPECTION

8/26/24

-Not ready fee assessed -



Responses to Inspection Summary dated Monday, August 26, 2024

- A Simpson PHD2-SDS3 hold-down has been added at the Stud Pack between the North Windows.

- It is understood that four 2x6 studs have been built-up in lieu of the 6x6 posts as per plan. This is acceptable and the 6x6 posts are not required provided that the built post is nailed together with 10d common nails at a min. spacing of 24" O.C.
- Additional metal channels have been added to the studs identified to reinforce the three locations where the exterior studs have been bored more than 40%. Please see attached detail sketches.
- The TJI's are attached at a min. of two 8d nails, one on each side, toenailing to the bearing plate. The 8d nails are to be placed 1 1/2" from the interior face of the load bearing studs. A ladder to the roof will be available on site at the next inspection.



SWIG - LEE'S SUMMIT
400 NW CHIPMAN RD, LEE'S SUMMIT, MO 64086



OAG

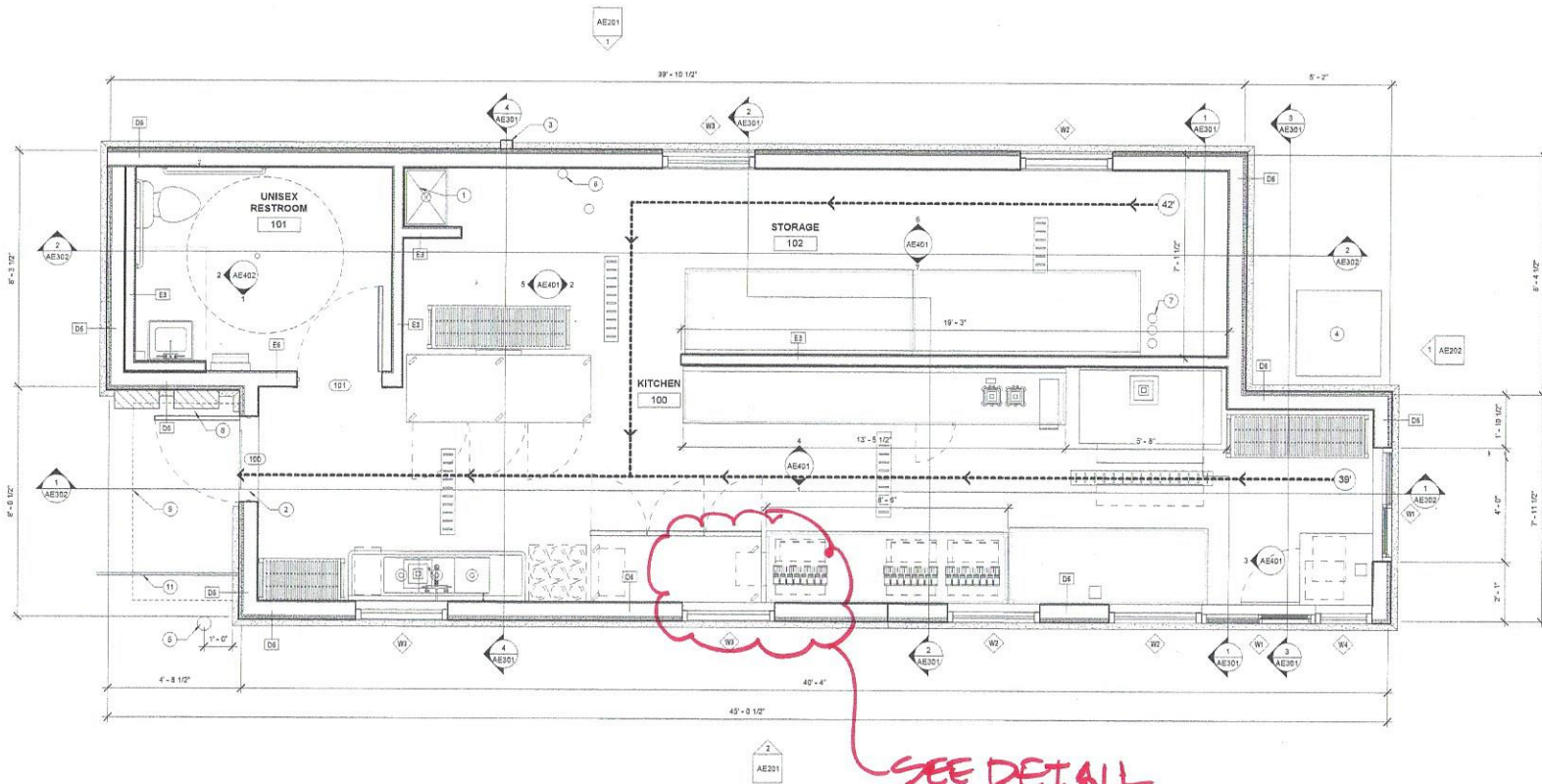
OLSON ARCHITECTURAL GROUP
1818 NW 72TH TERRACE
KANSAS CITY, MO 64111

REVISION SCHEDULE		
No.	Description	Date

SHEETNAME
FLOOR PLAN

PROJECT NUMBER	2102
DATE	05/18/2023
DRAWN BY	PLS
CHECKED BY	SDO
SCALE	1/2" = 1'-0"

AE112



1 FLOOR PLAN
1/2" = 1'-0"



DIMENSION NOTES

- A. ALL PLAN DIMENSIONS, UNLESS OTHERWISE NOTED, ARE TO FACE OF DYP, RD, OR SHEATHING, OR CENTERLINE OF DOOR / CENTERLINE OF ROOM / CORNER.
- B. NOTED DIMENSIONS SHALL TAKE PRECEDENCE OVER SCALE DIMENSIONS DETAILS OVER SMALLER SCALE DRAWINGS.
- C. "FRESH FLOOR" REFERS TO TOP OF SLAB.
- D. VERIFY ALL ROLLOVER CONCRETE PAD OR PLATFORM DIMENSIONS FOR EQUIPMENT PROVIDED IN THIS PROJECT, OR BY OTHERS.
- E. CEILING HEIGHT DIMENSIONS ARE TO FINISHED SURFACES, UNLESS NOTED OTHERWISE.

FLOOR PLAN KEYNOTES ①

- 1 MCP SINK, COORDINATE WITH PLUMBING DRAWINGS.
- 2 ADA COMPLIANT THRESHOLD. SEE SHEET.
- 3 COUNTER/OUT TO DRAIN OR BRUSH/BLOCK BELOW.
- 4 CO2 TANK STORAGE CABINET, COORDINATE WITH EQUIPMENT SHEETS AND PLUMBING.
- 5 BOLLARD, REF. CIVIL DRAWINGS.
- 6 BRACKET MOUNTED 2X4/2X6 WIRE EXTENSIBLE-SHER.
- 7 4" SOO LINE CONDUITS STUBBED UP THROUGH FLOOR.
- 8 ELECTRICAL PANEL OR EQUIPMENT, EXTERIOR/PARTIATED ENCLOSURE WITH SECURITY LOCKING SYSTEM, COORDINATE WITH ELECTRICAL.
- 9 EXTERIOR CANOPY ABOVE.
- 10 8"4" CLEAR TURNING FLOOR SPACE.
- 11 FENCING, REF. CIVIL DRAWINGS.

FLOOR PLAN GENERAL NOTES

- A. GENERAL CONTRACTOR SHALL VERIFY ALL CONDITIONS AND DIMENSIONS PRIOR TO CONSTRUCTION. REPORT ANY SIGNIFICANT DISCREPANCIES TO THE ARCHITECT.
- B. SEE MECHANICAL AND ELECTRICAL SHEETS FOR ADDITIONAL INFORMATION.
- C. ALL COLOR SELECTIONS AND FINISH MATERIALS AND STYLES SHALL BE COORDINATED WITH OWNER.
- D. DO NOT SCALE DRAWINGS.
- E. SEE SHEET A411 FOR WALL TYPES.
- F. FURNITURE AND KITCHEN EQUIPMENT SHOWN DASHED.
- G. PROVIDE BLOCIONS IN WALLS FOR WALL-MOUNTED EQUIPMENT / ACCESSORIES PER PLAN.

STL. CHANNEL @ EA. SIDE OF
OPENING ON EACH SIDE OF
STUD (LONG) FIT TIGHT TO
BOTTOM OF PLATE (TYP. 6 PLCS.)

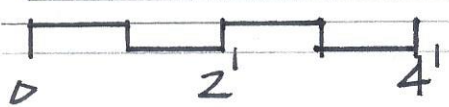


← INSTALLED (EXIST.)
WOOD STUDS

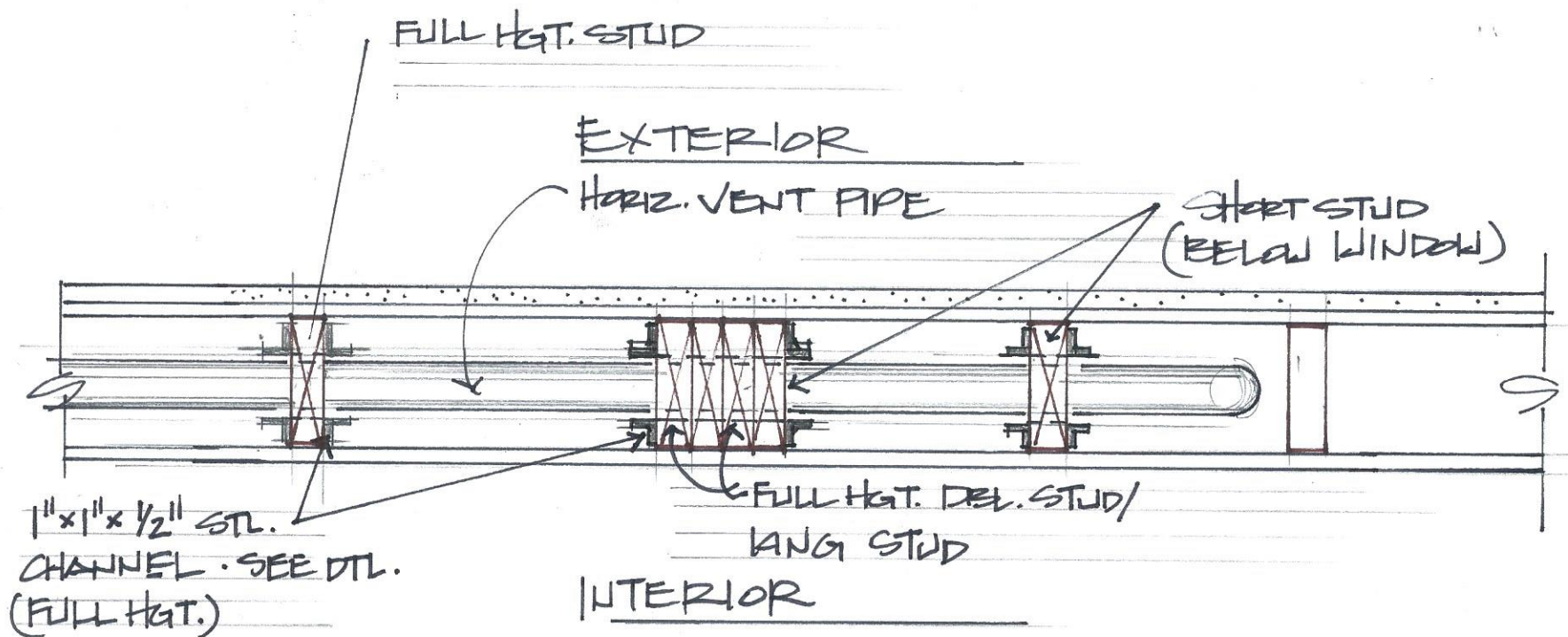
← INSTALLED (EXIST.)
VENT PIPE

STL. CHANNEL @ EA SIDE
OF OPG. ON EACH SIDE OF
STUD (SHORT) FIT TIGHT TO
BOT. OF PLATE (TYP. 6 PLCS.)

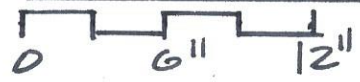
WALL ELEV. (INTERIOR)



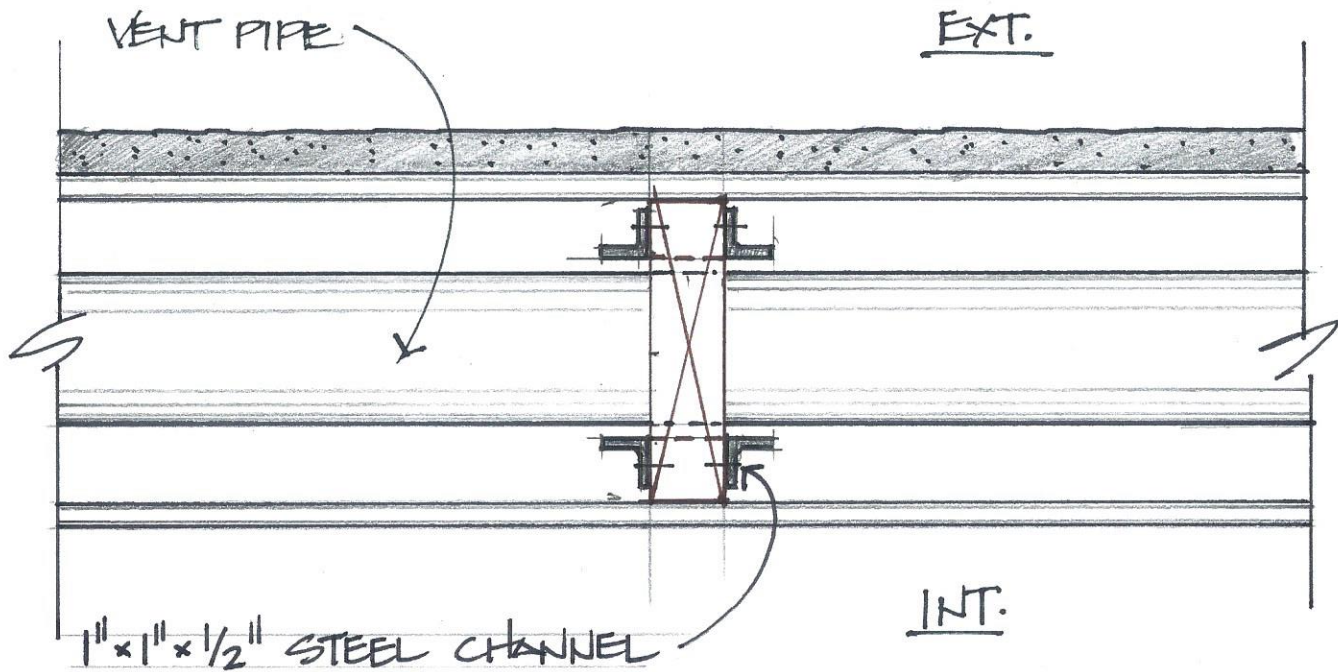
09-04-24



SECTION THRU WALL



GALIA - LEES SUMMIT
09.04.24



1" x 1" x 1/2" STEEL CHANNEL
 FIT TIGHT TO PLATE (ABOVE)
 (TYP. 6 PLS. SHORT
 6 PLS. LONG)
 ATTACH W/ 1/4" x 1" SCREWS 8" O.C.

DTL. @ STL. CHANNEL

SKIG-LEES SUMMIT



09.03.24