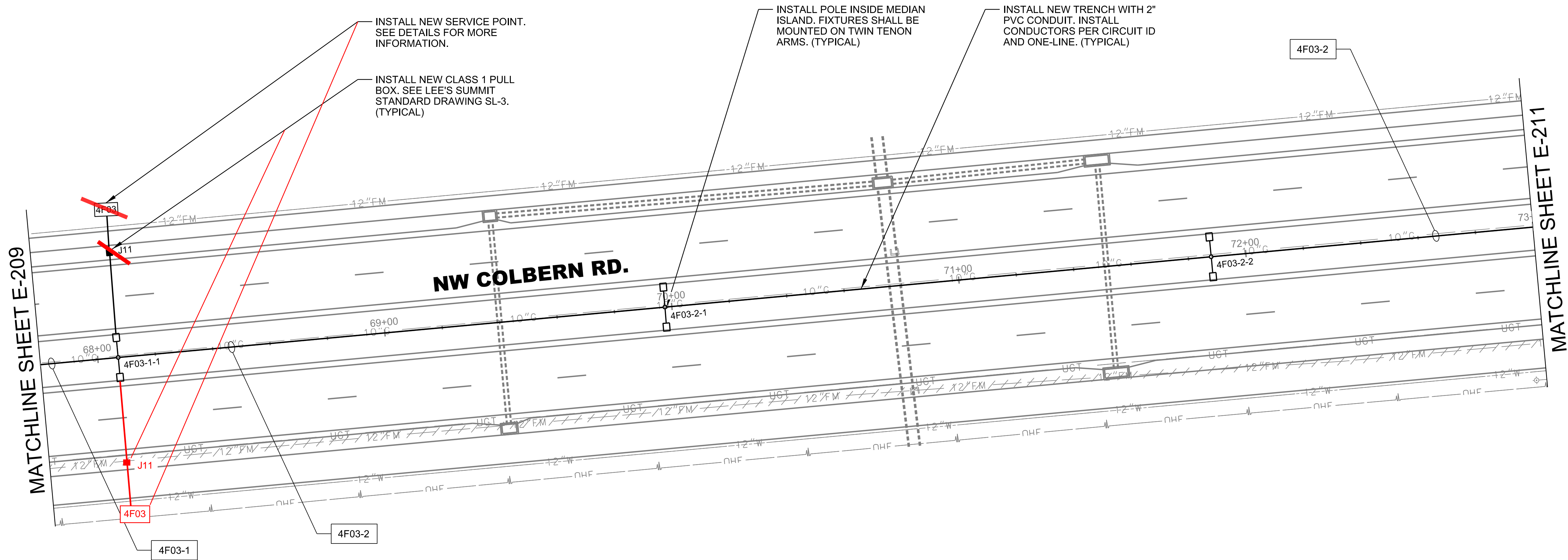
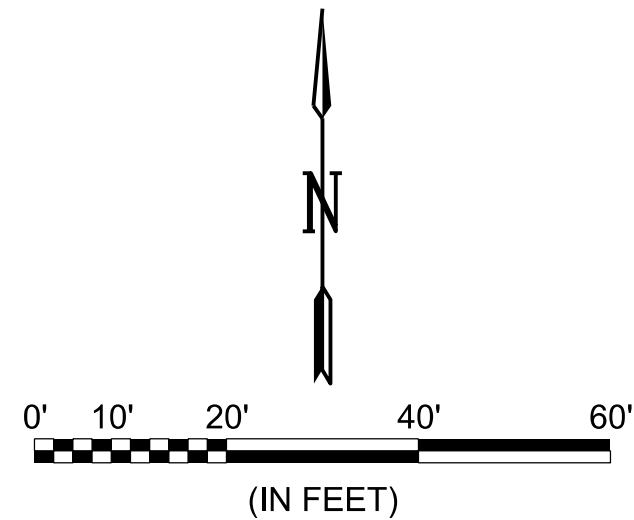


twmccormick 12/2/2022 10:39:42 AM
WORKSPACE\Garver_2012
L:\2017\17177041 - Colbern Road Reconstruction\Drawings\CCR_E210_LP.dgn

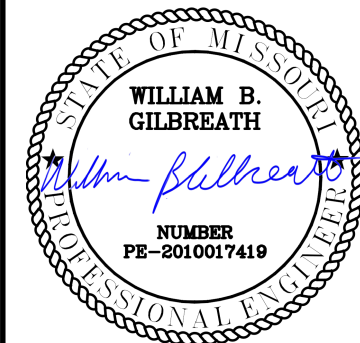


GENERAL NOTES:

- SEE LIGHTING INSTALLATION PLAN I FOR GENERAL NOTES.



© 2022 GARVER, LLC
THIS DOCUMENT, ALONG WITH THE
IDEAS AND DESIGNS CONVEYED
HEREIN, SHALL BE CONSIDERED
INSTRUMENTS OF PROFESSIONAL
SERVICE AND ARE PROPERTY OF
GARVER, LLC. ANY USE,
REPRODUCTION, OR DISTRIBUTION
OF THIS DOCUMENT, ALONG WITH
THE IDEAS AND DESIGN CONTAINED
HEREIN, IS PROHIBITED UNLESS
AUTHORIZED IN WRITING BY
GARVER, LLC OR EXPLICITLY
ALLOWED IN THE GOVERNING
PROFESSIONAL SERVICES
AGREEMENT FOR THIS WORK.



Digitally Signed 12/02/2022
THIS SHEET HAS BEEN
STAMPED, SEALED AND DATED
ELECTRONICALLY

REV.	DATE	DESCRIPTION	BY



CITY OF
LEE'S SUMMIT
LEE'S SUMMIT, MISSOURI
F.A.P. STP-3301(627)

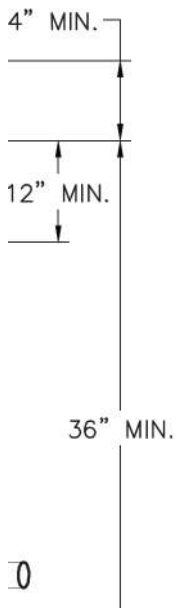
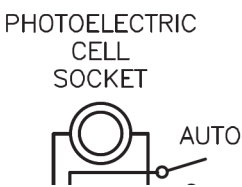
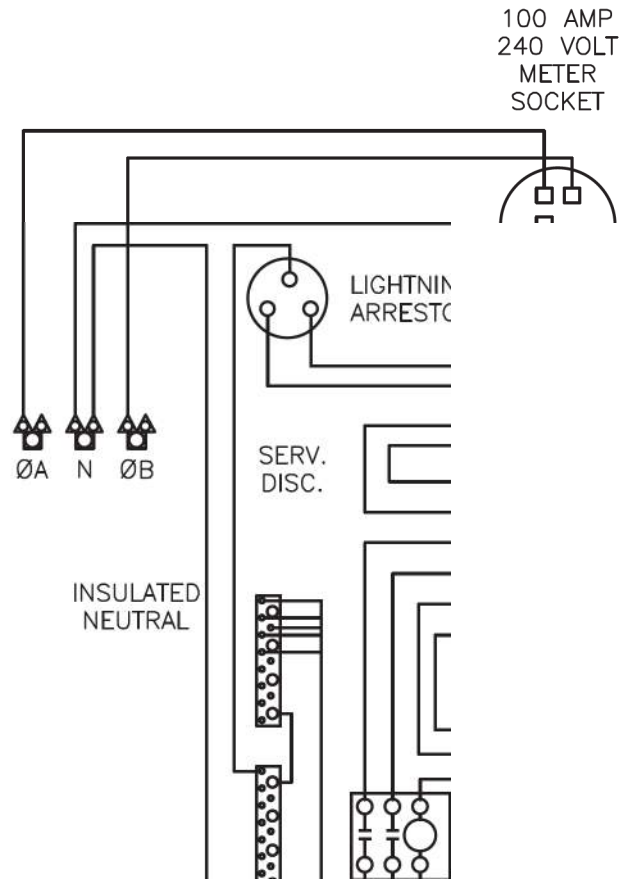
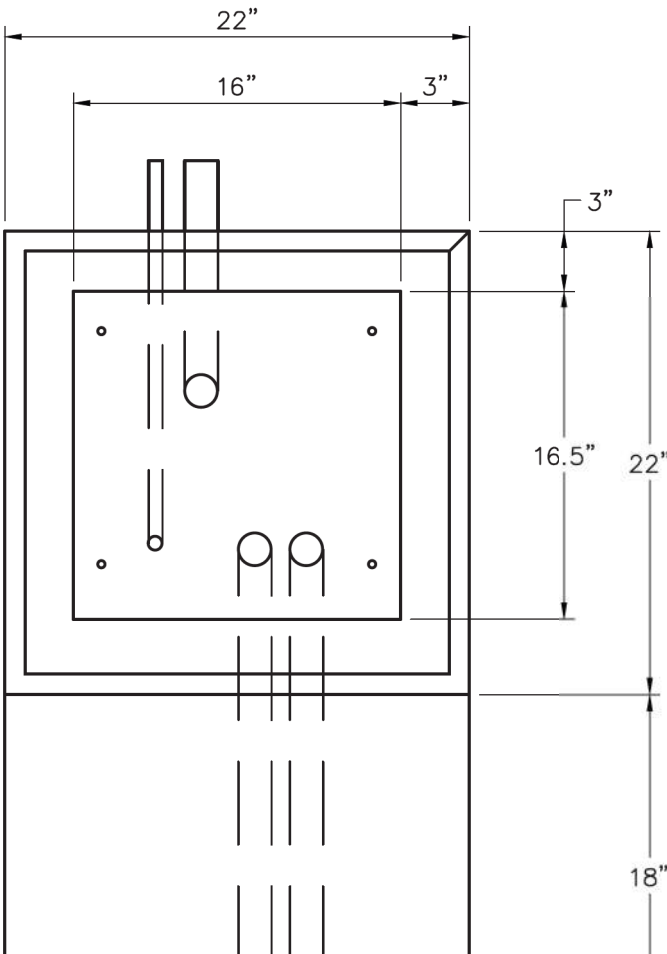
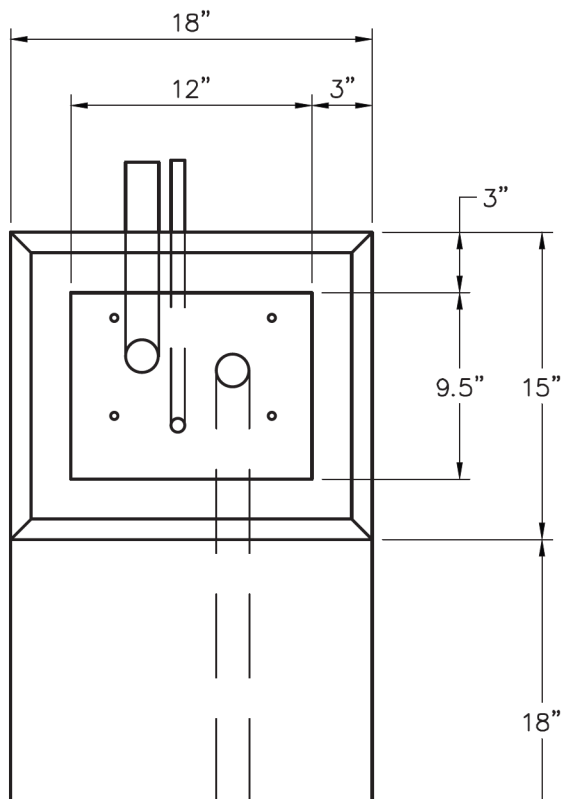
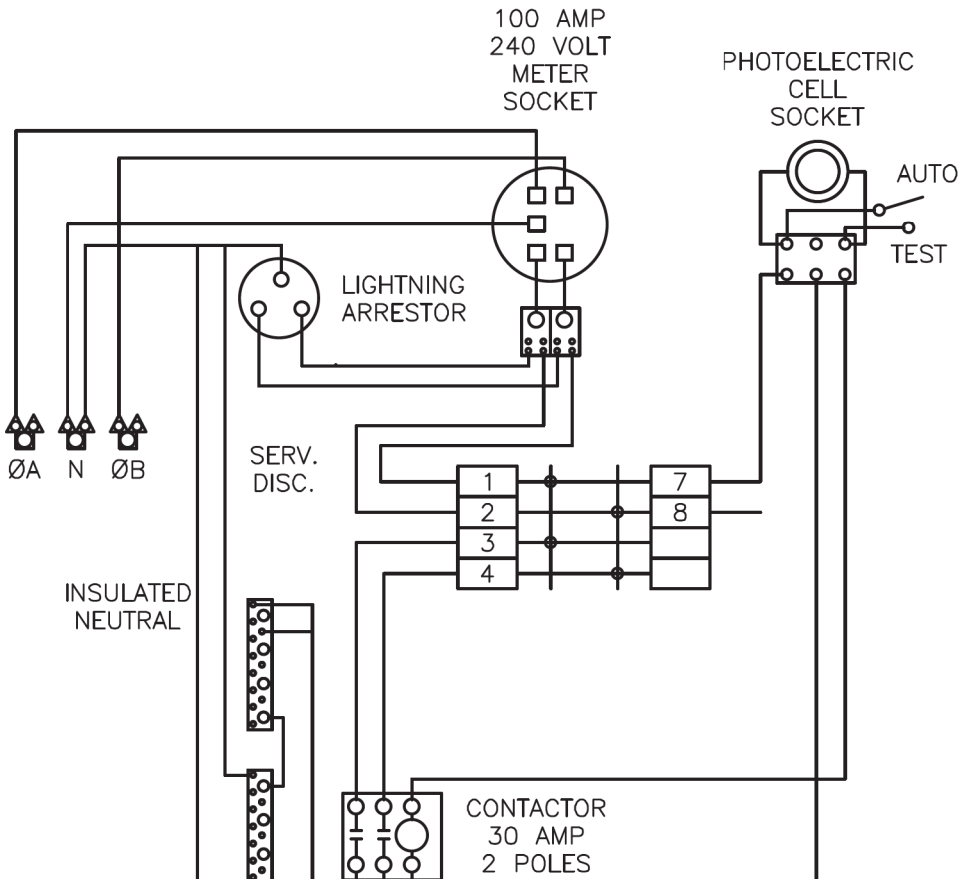
COLBERN ROAD
RECONSTRUCTION

LIGHTING
INSTALLATION PLAN X

JOB NO.: 17177041
DATE: DEC. 2022
DESIGNED BY: AKF
DRAWN BY: AKF

BAR IS ONE INCH ON
ORIGINAL DRAWING
0" = 1"
IF NOT ONE INCH ON THIS SHEET,
ADJUST SCALES ACCORDINGLY.

DRAWING NUMBER
E-210



Project: POLE AND LUMINAIRE DETAILS
CITY OF LEE'S SUMMIT, MO
LEE'S SUMMIT, JACKSON COUNTY, MO
Sheet Name: POWER SUPPLY DETAILS

PUBLIC WORKS ENGINEERING DIVISION | 220 SE GREEN ST



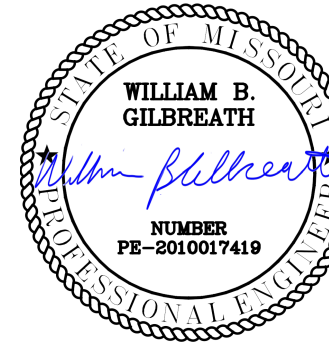
CITY OF LEE'S SUMMIT
LEE'S SUMMIT, MISSOURI
F.A.P. STP-3301(627)
COLBERN ROAD
RECONSTRUCTION

ELECTRICAL
DETAILS X

JOB NO.: 17177041
DATE: DEC. 2022
DESIGNED BY: AKF
DRAWN BY: AKF

BAR IS ONE INCH ON
ORIGINAL DRAWING
0 1"
IF NOT ONE INCH ON THIS SHEET,
ADJUST SCALES ACCORDINGLY.

DRAWING NUMBER
E-310



Digitally Signed 12/02/2022
THIS SHEET HAS BEEN
SIGNED, SEALED AND DATED
ELECTRONICALLY

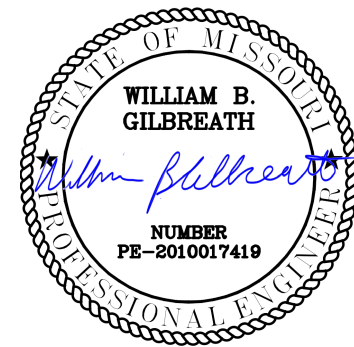
REV.	DATE	DESCRIPTION	BY



© 2022 GARVER, LLC
THIS DOCUMENT, ALONG WITH THE
IDEAS AND DESIGNS CONVEYED
HEREIN, SHALL BE CONSIDERED
INSTRUMENTS OF PROFESSIONAL
SERVICE AND ARE PROPERTY OF
GARVER, LLC. ANY USE,
REPRODUCTION, OR DISTRIBUTION
OF THIS DOCUMENT, ALONG WITH
THE IDEAS AND DESIGN CONTAINED
HEREIN, IS PROHIBITED UNLESS
AUTHORIZED IN WRITING BY
GARVER, LLC OR EXPLICITLY
ALLOWED IN THE GOVERNING
PROFESSIONAL SERVICES
AGREEMENT FOR THIS WORK.



© 2022 GARVER, LLC
THIS DOCUMENT, ALONG WITH THE
IDEAS AND DESIGNS CONVEYED
HEREIN, SHALL BE CONSIDERED
INSTRUMENTS OF PROFESSIONAL
SERVICE AND ARE PROPERTY OF
GARVER, LLC. ANY USE,
REPRODUCTION, OR DISTRIBUTION
OF THIS DOCUMENT, ALONG WITH
THE IDEAS AND DESIGN CONTAINED
HEREIN, IS PROHIBITED UNLESS
AUTHORIZED IN WRITING BY
GARVER, LLC OR EXPLICITLY
ALLOWED IN THE GOVERNING
PROFESSIONAL SERVICES
AGREEMENT FOR THIS WORK.



Digitally Signed 12/02/2022
THIS SHEET HAS BEEN
SIGNED, SEALED AND DATED
ELECTRONICALLY

BY	DESCRIPTION	DATE	REV.



CITY OF
LEE'S SUMMIT
LEE'S SUMMIT, MISSOURI
F.A.P. STP-3301(627)
COLBORN ROAD
RECONSTRUCTION

ELECTRICAL DETAILS I

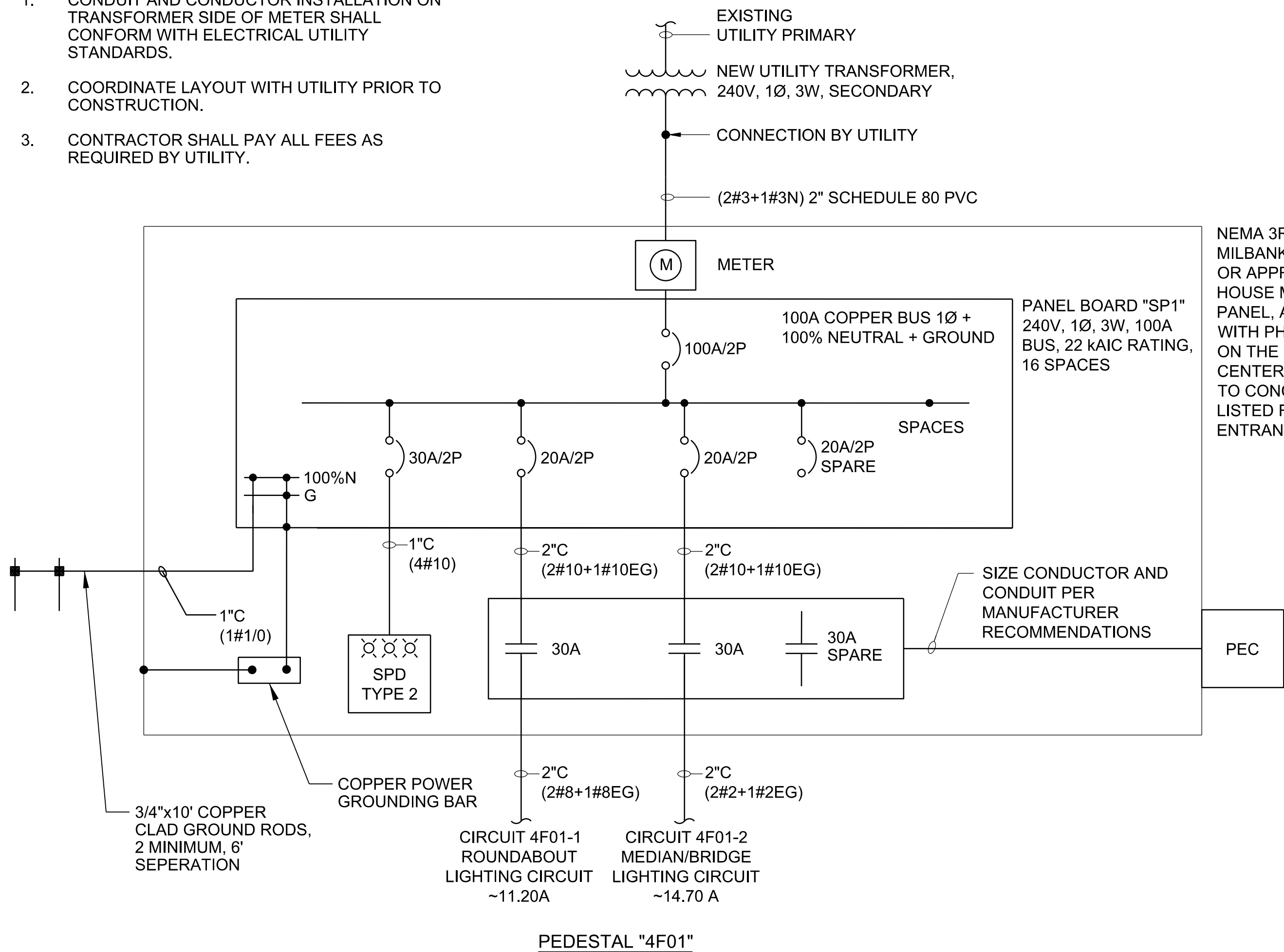
JOB NO.: 17177041
DATE: DEC. 2022
DESIGNED BY: AKF
DRAWN BY: AKF

BAR IS ONE INCH ON
ORIGINAL DRAWING
0 1"
IF NOT ONE INCH ON THIS SHEET,
ADJUST SCALES ACCORDINGLY.

DRAWING NUMBER
E-301

NOTES:

- CONDUIT AND CONDUCTOR INSTALLATION ON TRANSFORMER SIDE OF METER SHALL CONFORM WITH ELECTRICAL UTILITY STANDARDS.
- COORDINATE LAYOUT WITH UTILITY PRIOR TO CONSTRUCTION.
- CONTRACTOR SHALL PAY ALL FEES AS REQUIRED BY UTILITY.



NEMA 3R ENCLOSURE, MILBANK CP3B51115A22SL1 OR APPROVED EQUAL TO HOUSE METER, SPD, POWER PANEL, AND CONTACTOR WITH PHOTOCELL MOUNTED ON THE SIDE OF THE LOAD CENTER. SECURE PEDESTAL TO CONCRETE PAD. UL LISTED FOR SERVICE ENTRANCE. NEMA 3R RATED.

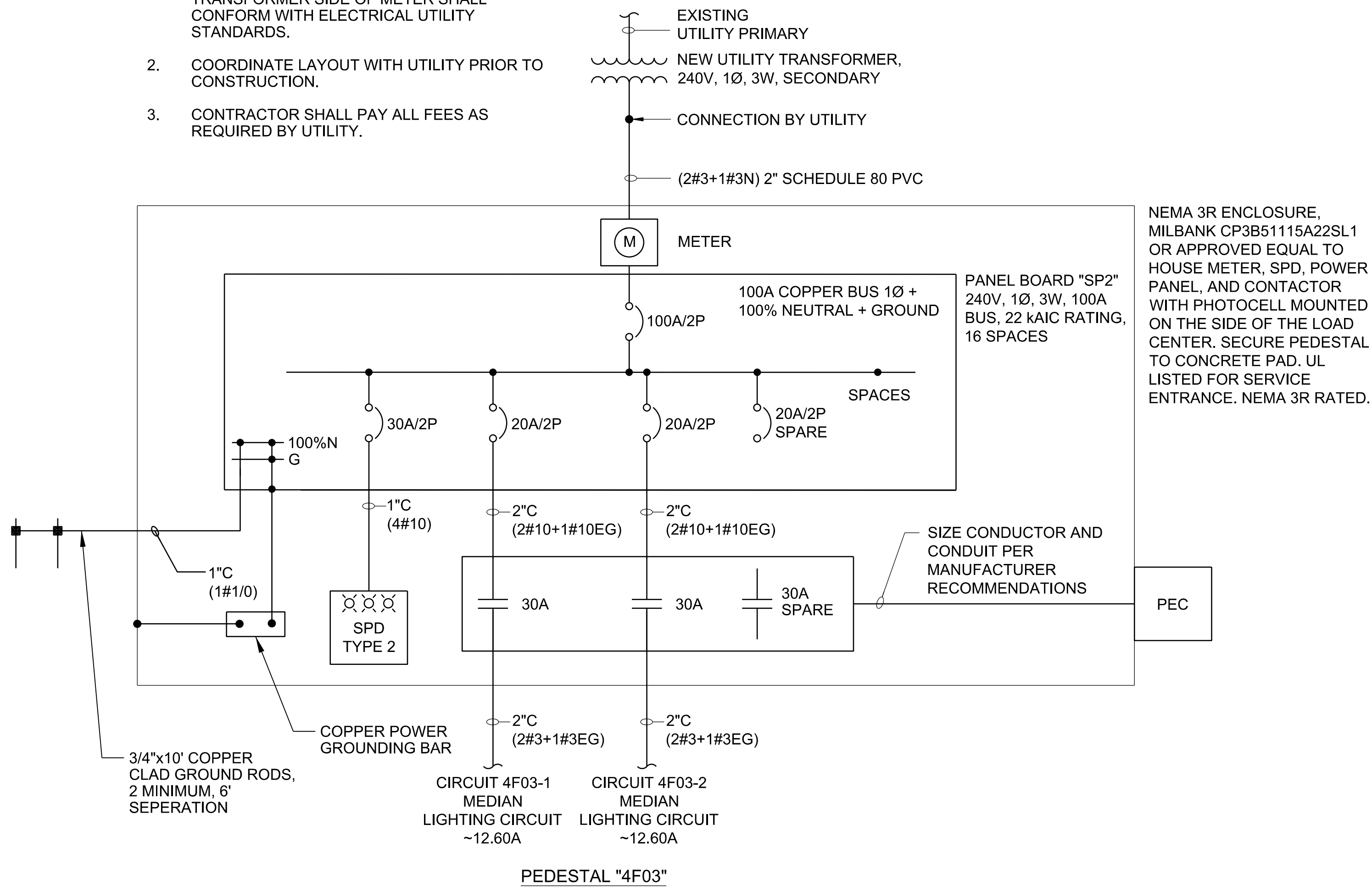
1 ONE-LINE DIAGRAM (4F01)
SCALE: NONE

DIAGRAM NOTES:

- ELECTRICAL WORK SHALL BE PERFORMED IN ACCORDANCE WITH THE CURRENT EDITIONS OF THE NFPA 70 (2017) NATIONAL ELECTRICAL CODE, NFPA 101 (2018) LIFE SAFETY CODE, STATE ELECTRICAL CODE, AND LOCAL ELECTRICAL CODE.
- COORDINATE ELECTRICAL POWER SUPPLY WITH EQUIPMENT SUPPLIED.
- COORDINATE ALL ELECTRICAL WORK AND POWER OUTAGES WITH OWNER AND POWER UTILITY.
- WIRING SHALL BE MINIMUM TYPE THHN/THWN-2.
- EQUIPMENT SHORT CIRCUIT CURRENT RATINGS AND AVAILABLE INTERRUPTING CURRENT RATINGS SHALL BE FULLY RATED TO INTERRUPT SYMMETRICAL SHORT CIRCUIT CURRENT AVAILABLE AT TERMINALS. SERIES RATED SYSTEMS SHALL NOT BE USED.
- NEUTRAL BUSES SHALL BE COPPER 100% RATED UNLESS NOTED OTHERWISE.
- GROUND BUSES SHALL BE 100% COPPER UNLESS OTHERWISE NOTED.
- INSTALL AN EQUIPMENT GROUND GROUNDING CONDUCTOR IN ALL FEEDER AND BRANCH CIRCUITS.
- INSTALL ALL CONDUCTORS AND CABLES IN CONDUIT UNLESS NOTED OTHERWISE.
- INSTALL LUGS AND JUNCTION BOXES AS REQUIRED TO FIT WIRING.
- ALL WIRING SHALL BE COPPER.
- INSTALL NEW LAMINATED TYPED PANEL SCHEDULES IN ALL ELECTRICAL PANELS INDICATING WORK PERFORMED.
- INSTALL NEW PERMANENT LABELS ON PANELBOARDS INDICATING WORK PERFORMED.
- PEC SHALL BE INSTALLED TO FACE NORTH.
- POLE RISER CIRCUITS SHALL BE NO. 10 AWG COPPER.
- THE UTILITY POINT OF CONTACT IS JENNY CASEY, KCP&L, 816-347-4334

NOTES:

- CONDUIT AND CONDUCTOR INSTALLATION ON TRANSFORMER SIDE OF METER SHALL CONFORM WITH ELECTRICAL UTILITY STANDARDS.
- COORDINATE LAYOUT WITH UTILITY PRIOR TO CONSTRUCTION.
- CONTRACTOR SHALL PAY ALL FEES AS REQUIRED BY UTILITY.



NEMA 3R ENCLOSURE, MILBANK CP3B51115A22SL1 OR APPROVED EQUAL TO HOUSE METER, SPD, POWER PANEL, AND CONTACTOR WITH PHOTOCELL MOUNTED ON THE SIDE OF THE LOAD CENTER. SECURE PEDESTAL TO CONCRETE PAD. UL LISTED FOR SERVICE ENTRANCE. NEMA 3R RATED.

2 ONE-LINE DIAGRAM (4F03)
SCALE: NONE