



RE: P240347-02 - Roof - Osage Lot 85

Site Information:

Project Customer: Clayton Properties Project Name: Twin Honeydew - Farmhouse

Lot/Block: 85

Subdivision: Osage

Model:

Address: 3723/3725 SW Knoxville Ct

City: Lee's Summit

State: MO

General Truss Engineering Criteria & Design Loads (Individual Truss Design Drawings Show Special Loading Conditions):

Design Code: IRC2018/TPI2014

Wind Code: ASCE 7-16 Wind Speed: 115 mph

Roof Load: 45.0 psf

Design Program: MiTek 20/20 8.6

Design Method: MWFRS (Envelope)/C-C hybrid Wind ASCE 7-16

Floor Load: N/A psf

Mean Roof Height (feet): 35

Exposure Category: C

No.	Seal#	Truss Name	Date
1	I68043355	A1	9/9/24

The truss drawing(s) referenced above have been prepared by
MiTek USA, Inc. under my direct supervision based on the parameters
provided by Premier Building Supply (Springhill, KS)20300 W 207th Street.

Truss Design Engineer's Name: Sevier, Scott

My license renewal date for the state of Missouri is December 31, 2025.

IMPORTANT NOTE: The seal on these truss component designs is a certification that the engineer named is licensed in the jurisdiction(s) identified and that the designs comply with ANSI/TPI 1. These designs are based upon parameters shown (e.g., loads, supports, dimensions, shapes and design codes), which were given to MiTek or TRENCO. Any project specific information included is for MiTek's or TRENCO's customers file reference purpose only, and was not taken into account in the preparation of these designs. MiTek or TRENCO has not independently verified the applicability of the design parameters or the designs for any particular building. Before use, the building designer should verify applicability of design parameters and properly incorporate these designs into the overall building design per ANSI/TPI 1, Chapter 2.



September 9, 2024

Job	Truss	Truss Type	Qty	Ply	Roof - Osage Lot 85	
P240347-02	A1	Piggyback Base Structural Gable	2	1	Job Reference (optional)	168043355

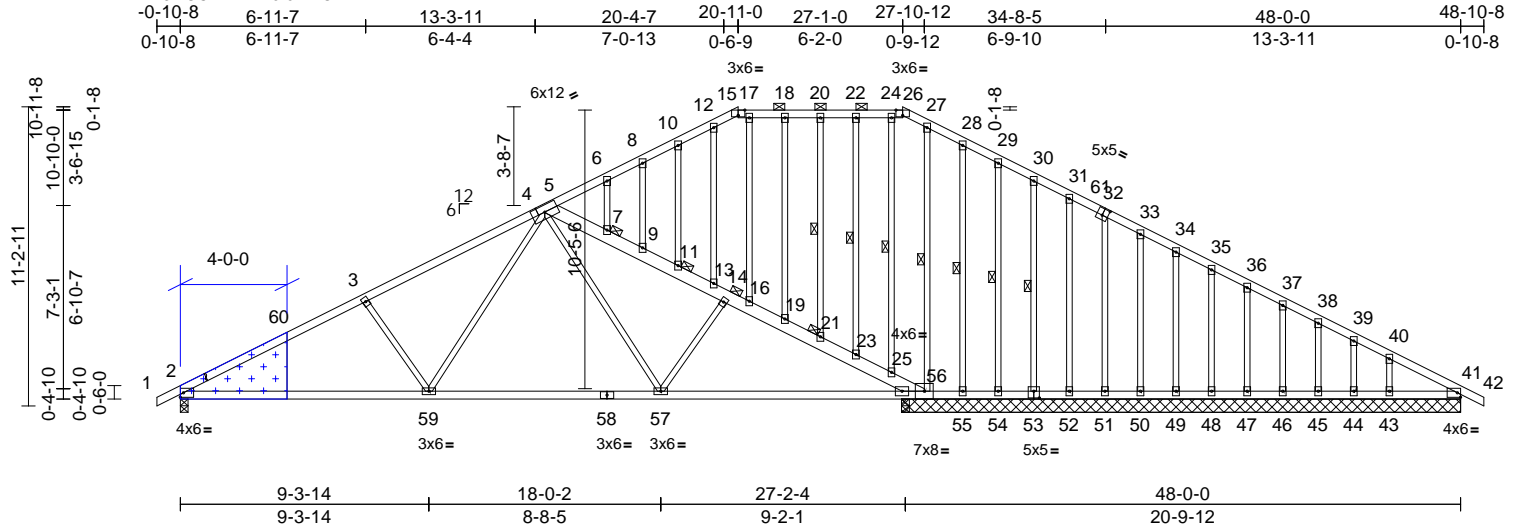
Premier Building Supply (Springhill, KS), Spring Hills, KS - 66083,
REPAIR:

Run: 8.63 S Jul 12 2024 Print: 8.630 S Jul 12 2024 MiTek Industries, Inc. Fri Sep 06 07:04:24

Page: 1

BREAK IN MEMBER 2-3 LOCATED 1-0-0 FROM LEFT END.

ID:EmCXOIxYCMl5IKd?OVtvi7yGxE5-RfC?PsB70Hq3NSgPqnL8w3uITxbGKWrcD0i7J4zJC?f



ATTACH 1/2" PLYWOOD OR OSB GUSSET (15/32" RATED SHEATHING 32/16 EXP 1)
TO EACH FACE OF TRUSS WITH (0.131" X 2.5" MIN.) NAILS PER THE FOLLOWING NAIL SCHEDULE:
2 X 3'S - 2 ROWS, 2 X 4'S - 3 ROWS, 2 X 6'S AND LARGER - 4 ROWS: SPACED @ 4" O.C.
NAILS TO BE DRIVEN FROM BOTH FACES. STAGGER SPACING FROM FRONT TO BACK FACE
FOR A NET 2" O.C. SPACING IN EACH COVERED TRUSS MEMBER. USE 2" MEMBER END DISTANCE.

Scale = 1:86.4

Plate Offsets (X, Y): [15:0-3-0,Edge], [26:0-3-0,Edge], [32:0-2-8,0-3-0], [53:0-2-8,0-3-0]

Loading	(psf)	Spacing	2-0-0	CSI	DEFL	in	(loc)	l/defl	L/d	PLATES	GRIP	
TCLL (roof)	25.0	Plate Grip DOL	1.15	TC	0.75	Vert(LL)	-0.20	2-59	>999	240	MT20	244/190
TCDL	10.0	Lumber DOL	1.15	BC	0.95	Vert(CT)	-0.43	2-59	>771	180		
BCLL	0.0	Rep Stress Incr	YES	WB	0.35	Horz(CT)	0.07	56	n/a	n/a		
BCDL	10.0	Code	IRC2018/TPI2014	Matrix-S							Weight: 312 lb	FT = 20%

LUMBER
TOP CHORD 2x4 SP No.2 *Except* 56-5:2x6 SPF No.2
BOT CHORD 2x4 SP No.2
WEBS 2x3 SPF No.2
OTHERS 2x3 SPF No.2

BRACING
TOP CHORD Structural wood sheathing directly applied or
2-2-0 oc purlins, except
2-0-0 oc purlins (10-0-0 max.): 15-26, 5-56.
BOT CHORD Rigid ceiling directly applied or 6-0-0 oc
bracing, Except:
8-11-14 oc bracing: 2-59
10-0-0 oc bracing: 57-59
2-2-0 oc bracing: 56-57.
WEBS 1 Row at midpt 20-21, 22-23, 24-25,
27-56, 28-55, 29-54,
30-53

JOINTS 1 Brace at Jt(s): 14,
21, 11, 7

REACTIONS (size) 2=0-3-8, 41=20-11-8, 43=20-11-8,
44=20-11-8, 45=20-11-8,
46=20-11-8, 47=20-11-8,
48=20-11-8, 49=20-11-8,
50=20-11-8, 51=20-11-8,
52=20-11-8, 53=20-11-8,
54=20-11-8, 55=20-11-8,
56=20-11-8
Max Horiz 2=204 (LC 12)
Max Uplift 2=225 (LC 12), 41=29 (LC 25),
43=91 (LC 13), 44=28 (LC 13),
45=42 (LC 13), 46=41 (LC 13),
47=41 (LC 13), 48=41 (LC 13),
49=41 (LC 13), 50=42 (LC 13),
51=41 (LC 13), 52=39 (LC 13),
53=46 (LC 13), 54=23 (LC 13),
55=509 (LC 25), 56=162 (LC 12)

Max Grav 2=1249 (LC 1), 41=166 (LC 26),
43=232 (LC 1), 44=81 (LC 1),
45=128 (LC 26), 46=119 (LC 1),
47=120 (LC 1), 48=120 (LC 1),
49=120 (LC 26), 50=123 (LC 1),
51=118 (LC 26), 52=128 (LC 1),
53=96 (LC 26), 54=234 (LC 1),
55=33 (LC 9), 56=1945 (LC 1)

FORCES (lb) - Maximum Compression/Maximum
Tension
TOP CHORD 1-2=0/17, 2-3=-1983/353, 3-5=-1735/359,
5-6=-43/246, 6-8=-12/263, 8-10=0/277,
10-12=0/296, 12-15=-17/249, 15-17=-15/234,
17-18=-13/242, 18-20=-13/242,
20-22=-13/242, 22-24=-13/242,
24-26=-10/244, 26-27=-47/223, 27-28=0/312,
28-29=-6/254, 29-30=-9/233, 30-31=-7/227,
31-33=-27/219, 33-34=-46/203,
34-35=-64/198, 35-36=-83/198,
36-37=-101/198, 37-38=-120/198,
38-39=-144/200, 39-40=-170/189,
40-41=-240/230, 41-42=0/17, 5-7=-1799/395,
7-9=-1829/416, 9-11=-1862/436,
11-13=-1892/457, 13-14=-1977/479,
14-16=-2050/498, 16-19=-2125/504,
19-21=-2155/510, 21-23=-2187/516,
23-25=-2216/523, 25-56=-2226/522
BOT CHORD 2-59=-415/1683, 57-59=-190/1108,
56-57=-274/1789, 55-56=-193/244,
54-55=-193/244, 52-54=-193/244,
51-52=-193/244, 50-51=-194/244,
49-50=-194/244, 48-49=-194/244,
47-48=-194/244, 46-47=-194/244,
45-46=-194/244, 44-45=-194/244,
43-44=-194/244, 41-43=-194/244

WEBS 3-59=-411/269, 5-59=-138/643, 5-57=-9/737,
14-57=-551/143, 20-21=-74/35,
22-23=-67/38, 24-25=-49/21, 27-56=-367/24,
28-55=-12/84, 29-54=-87/60, 30-53=-98/56,
31-52=-92/56, 32-51=-93/56, 33-50=-95/58,
34-49=-93/57, 35-48=-93/57, 36-47=-93/57,
37-46=-93/57, 38-45=-97/59, 39-44=-69/41,
40-43=-174/115, 18-19=-73/40,
16-17=-169/20, 12-13=-190/48,
10-11=-67/47, 8-9=-73/46, 6-7=-60/41

NOTES
1) Unbalanced roof live loads have been considered for
this design.
2) Wind: ASCE 7-16; Vult=115mph (3-second gust)
Vasd=91mph; TCDL=6.0psf; BCDL=6.0psf; h=35ft;
Ke=1.00; Cat. II; Exp C; Enclosed; MWFRS (envelope)
exterior zone and C-C Exterior(2E) -0-10-8 to 4-1-8,
Interior (1) 4-1-8 to 20-11-0, Exterior(2E) 20-11-0 to
27-1-0, Exterior(2R) 27-1-0 to 34-1-14, Interior (1)
34-1-14 to 48-10-8 zone; cantilever left and right
exposed; end vertical left and right exposed; C-C for
members and forces & MWFRS for reactions shown;
Lumber DOL=1.60 plate grip DOL=1.60



September 9, 2024

Continued on page 2

WARNING - Verify design parameters and READ NOTES ON THIS AND INCLUDED MITEK REFERENCE PAGE MII-7473 rev. 1/2/2023 BEFORE USE.

Design valid for use only with MiTek® connectors. This design is based only upon parameters shown, and is for an individual building component, not a truss system. Before use, the building designer must verify the applicability of design parameters and properly incorporate this design into the overall building design. Bracing indicated is to prevent buckling of individual truss web and/or chord members only. Additional temporary and permanent bracing is always required for stability and to prevent collapse with possible personal injury and property damage. For general guidance regarding the fabrication, storage, delivery, erection and bracing of trusses and truss systems, see **ANSI/TPI1 Quality Criteria, and DSB-22** available from Truss Plate Institute (www.tpinst.org) and **BCSI Building Component Safety Information** available from the Structural Building Component Association (www.sbcsccomponents.com)

MiTek®

16023 Swingley Ridge Rd.
Chesterfield, MO 63017
314.434.1200 / MiTek-US.com

Job	Truss	Truss Type	Qty	Ply	Roof - Osage Lot 85
P240347-02	A1	Piggyback Base Structural Gable	2	1	I68043355
					Job Reference (optional)

- 3) Truss designed for wind loads in the plane of the truss only. For studs exposed to wind (normal to the face), see Standard Industry Gable End Details as applicable, or consult qualified building designer as per ANSI/TPI 1.
- 4) Provide adequate drainage to prevent water ponding.
- 5) All plates are 3x4 MT20 unless otherwise indicated.
- 6) Gable studs spaced at 1-4-0 oc.
- 7) This truss has been designed for a 10.0 psf bottom chord live load nonconcurrent with any other live loads.
- 8) All bearings are assumed to be SP No.2 crushing capacity of 565 psi.
- 9) Provide mechanical connection (by others) of truss to bearing plate capable of withstanding 225 lb uplift at joint 2, 162 lb uplift at joint 56, 29 lb uplift at joint 41, 509 lb uplift at joint 55, 23 lb uplift at joint 54, 46 lb uplift at joint 53, 39 lb uplift at joint 52, 41 lb uplift at joint 51, 42 lb uplift at joint 50, 41 lb uplift at joint 49, 41 lb uplift at joint 48, 41 lb uplift at joint 47, 41 lb uplift at joint 46, 42 lb uplift at joint 45, 28 lb uplift at joint 44 and 91 lb uplift at joint 43.
- 10) This truss is designed in accordance with the 2018 International Residential Code sections R502.11.1 and R802.10.2 and referenced standard ANSI/TPI 1.
- 11) Graphical purlin representation does not depict the size or the orientation of the purlin along the top and/or bottom chord.

LOAD CASE(S) Standard

⚠ WARNING - Verify design parameters and READ NOTES ON THIS AND INCLUDED MITEK REFERENCE PAGE MII-7473 rev. 1/2/2023 BEFORE USE.

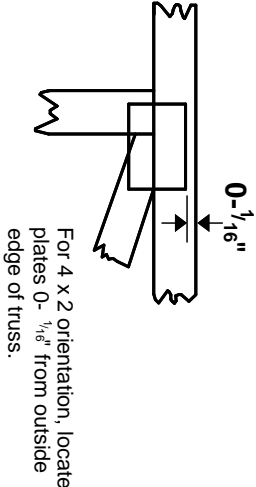
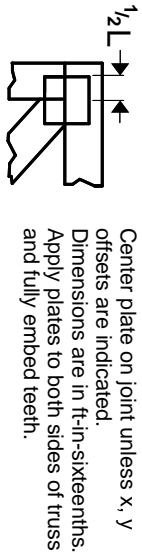
Design valid for use only with MiTek® connectors. This design is based only upon parameters shown, and is for an individual building component, not a truss system. Before use, the building designer must verify the applicability of design parameters and properly incorporate this design into the overall building design. Bracing indicated is to prevent buckling of individual truss web and/or chord members only. Additional temporary and permanent bracing is always required for stability and to prevent collapse with possible personal injury and property damage. For general guidance regarding the fabrication, storage, delivery, erection and bracing of trusses and truss systems, see **ANSI/TPI1 Quality Criteria, and DSB-22** available from Truss Plate Institute (www.tpinst.org) and **BCSI Building Component Safety Information** available from the Structural Building Component Association (www.sbcsccomponents.com)

MiTek®

16023 Swingley Ridge Rd.
Chesterfield, MO 63017
314.434.1200 / MiTek-US.com

Symbols

PLATE LOCATION AND ORIENTATION



For 4 x 2 orientation, locate plates 0- 1/16" from outside edge of truss.

This symbol indicates the required direction of slots in connector plates.

PLATE SIZE

The first dimension is the plate width measured perpendicular to slots. Second dimension is the length parallel to slots.

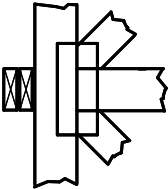
4 X 4

LATERAL BRACING LOCATION



Indicated by symbol shown and/or by text in the bracing section of the output. Use T or I bracing if indicated.

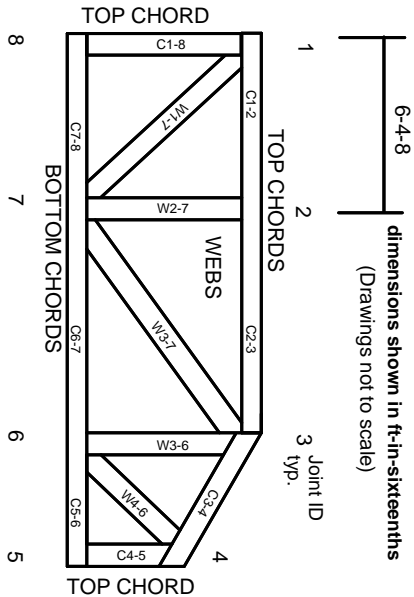
BEARING



Indicates location where bearings (supports) occur. Icons vary but reaction section indicates joint number/letter where bearings occur. Min size shown is for crushing only.

Industry Standards:
ANSI/TP1: National Design Specification for Metal Plate Connected Wood Truss Construction.
DSB-22: Design Standard for Bracing.
BCSI: Building Component Safety Information, Guide to Good Practice for Handling, Installing, Restraining & Bracing of Metal Plate Connected Wood Trusses.

Numbering System



JOINTS ARE GENERALLY NUMBERED/LETTERED CLOCKWISE AROUND THE TRUSS STARTING AT THE JOINT FARTHEST TO THE LEFT.

CHORDS AND WEBS ARE IDENTIFIED BY END JOINT NUMBERS/LETTERS.

Product Code Approvals

ICC-ES Reports:
ESR-1988, ESR-2362, ESR-2685, ESR-3282
ESR-4722, ESL-1388

Design General Notes

Trusses are designed for wind loads in the plane of the truss unless otherwise shown.
Lumber design values are in accordance with ANSI/TP1 1 section 6.3. These truss designs rely on lumber values established by others.

© 2023 MITek® All Rights Reserved



MITek Engineering Reference Sheet: MII-7473 rev. 1/2/2023

General Safety Notes

Failure to Follow Could Cause Property Damage or Personal Injury

1. Additional stability bracing for truss system, e.g. diagonal or X-bracing, is always required. See BCSI.
2. Truss bracing must be designed by an engineer. For wide truss spacing, individual lateral braces themselves may require bracing, or alternative Tor I bracing should be considered.
3. Never exceed the design loading shown and never stack materials on inadequately braced trusses.
4. Provide copies of this truss design to the building designer, erection supervisor, property owner and all other interested parties.
5. Cut members to bear tightly against each other.
6. Place plates on each face of truss at each joint and embed fully. Knots and wane at joint locations are regulated by ANSI/TP1 1.
7. Design assumes trusses will be suitably protected from the environment in accord with ANSI/TP1 1.
8. Unless otherwise noted, moisture content of lumber shall not exceed 19% at time of fabrication.
9. Unless expressly noted, this design is not applicable for use with fire retardant, preservative treated, or green lumber.
10. Camber is a non-structural consideration and is the responsibility of truss fabricator. General practice is to camber for dead load deflection.
11. Plate type, size, orientation and location dimensions indicated are minimum plating requirements.
12. Lumber used shall be of the species and size, and in all respects, equal to or better than that specified.
13. Top chords must be sheathed or purlins provided at spacing indicated on design.
14. Bottom chords require lateral bracing at 10 ft. spacing, or less, if no ceiling is installed, unless otherwise noted.
15. Connections not shown are the responsibility of others.
16. Do not cut or alter truss member or plate without prior approval of an engineer.
17. Install and load vertically unless indicated otherwise.
18. Use of green or treated lumber may pose unacceptable environmental, health or performance risks. Consult with project engineer before use.
19. Review all portions of this design (front, back, words and pictures) before use. Reviewing pictures alone is not sufficient.
20. Design assumes manufacture in accordance with ANSI/TP1 1 Quality Criteria.
21. The design does not take into account any dynamic or other loads other than those expressly stated.