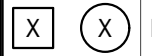




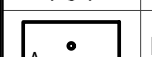


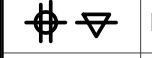




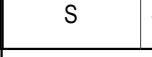




ELECTRICAL SPECIFICATIONS

1. GENERAL PROVISIONS:
- A. PROVIDE ALL LABOR, MATERIALS, EQUIPMENT, NECESSARY FOR THE COMPLETE INSTALLATION OF THE ELECTRICAL SYSTEMS OUTLINED.
- B. OBTAIN ALL PERMITS, FEES, LICENSES, INSPECTIONS, AND CERTIFICATES OF COMPLIANCE OR APPROVAL AS REQUIRED BY THE AUTHORITIES.
- C. ALL WORK SHALL BE PERFORMED IN ACCORDANCE WITH THE LATEST APPROVED EDITION OF THE NATIONAL ELECTRIC CODE (NEC), AND ALL APPLICABLE LAWS, CODES AND REGULATIONS OF THE GOVERNMENTAL BODIES HAVING JURISDICTION OVER THE SITE.
- D. ALL TESTING REQUIRED BY AUTHORITIES SHALL BE CONSIDERED PART OF THIS WORK.
- E. DURING CONSTRUCTION, ALL FIXTURES, EQUIPMENT, CONDUIT, ETC. SHALL BE COVERED, PLUGGED, OR CAPPED AS REQUIRED TO KEEP CLEAN AND UNDAMAGED. ALL DAMAGED ITEMS SHALL BE RESTORED TO ORIGINAL CONDITION OR REPLACED. ALL PROTECTIVE COVERING SHALL BE REMOVED BEFORE FINAL ACCEPTANCE.
- F. PROVIDE ALL NECESSARY CUTTING AND PATCHING OF WALLS, FLOORS, CEILINGS, AND ROOFS AS NECESSARY. PATCH AROUND AND ALL OPENINGS SHALL MATCH ADJACENT AREA. COORDINATE ALL ROOFING WORK WITH OWNER OR RESPONSIBLE PARTY, SO THAT THE EXISTING ROOFING WARRANTY WILL BE MAINTAINED.
- G. CONTRACTOR SHALL GUARANTEE ALL WORK AND MATERIALS AGAINST DEFECTS FOR A PERIOD OF ONE YEAR FROM FINAL ACCEPTANCE.
- H. CONTRACTOR SHALL PROVIDE ACCESS PANELS WHERE NECESSARY FOR CONCEALED ELECTRICAL COMPONENTS.
2. OPERATION AND MAINTENANCE MANUALS:
- A. DURING THE COURSE OF CONSTRUCTION, COLLECT AND COMPILE OPERATING INSTRUCTIONS, WIRING DIAGRAMS, CATALOG CUTS, LUBRICATION AND PREVENTIVE MAINTENANCE INSTRUCTIONS, PARTS LISTS, ETC. FOR ALL EQUIPMENT FURNISHED UNDER THIS CONTRACT.
- B. ALL LITERATURE AND INSTRUCTIONS SHIPPED WITH THE EQUIPMENT SHALL BE SAVED FOR INCLUSION IN THE OPERATION AND MAINTENANCE MANUALS.
- C. ALL LITERATURE LISTED ABOVE AND ALL PAPERS LISTING WARRANTIES, ETC. SHALL BE COLLATED AND LABELED WITH THE PROJECT NAME, ADDRESS, ARCHITECT, ENGINEER, CONTRACTORS, ETC. CONTRACTORS, ETC. DOCUMENTS SHALL BE COMPILED AND BOUND IN DIGITAL FILE OR 3 RING BINDER.
3. MANUFACTURERS:
- A. MANUFACTURERS, MODEL NUMBERS, ETC. INDICATED OR SCHEDULED ON THE DRAWINGS SHALL BE INTERPRETED AS HAVING ESTABLISHED A STANDARD OF QUALITY AND SHALL NOT BE CONSIDERED AS LIMITING COMPETITION. ARTICLES, FIXTURES, ETC. OF EQUAL QUALITY BY MANUFACTURERS SHALL BE ACCEPTABLE, SUBJECT TO STRUCTURAL AND ELECTRICAL CONSTRAINTS OF THE PROJECT DESIGN, UNLESS NOTED OTHERWISE.
4. TESTING, AND BALANCING:
- A. ALL CIRCUITS SHALL BE TESTED FOR CONTINUITY, SHORTS, AND GROUNDS BEFORE CONNECTING TO THE PROPER PHASE AS DESIGNED TO BALANCE THE LOADING BETWEEN PHASES.
- B. POWER AND LIGHTING PANELS SHALL BE PROPERLY PHASED TO DISTRIBUTE THE LOAD AND SHALL BE CONNECTED AND ADJUSTED TO OPERATE AS SPECIFIED.
- C. ALL MOTORS AND SIMILAR EQUIPMENT SHALL BE CHECKED FOR PROPER PHASE ROTATION AND OPERATION.
5. RACEWAYS:
- A. CONDUIT INSIDE THE BUILDING SHALL BE METALLIC TUBING (EMT), BEARING THE UL LABEL, WITH COMPRESSION TYPE FITTINGS OR SCREW SET FITTINGS.
- B. CONDUIT EXPOSED TO THE WEATHER, INSTALLED UNDERGROUND, IN CONCRETE, OR USED FOR SERVICE ENTRANCE SHALL BE STANDARD RIGID CONDUIT (GALVANIZED) WITH THREADED FITTINGS.
- C. UNDERGROUND CONDUIT MAY BE POLYVINYL CHLORIDE WITH A DEFLECTION TEMPERATURE, UNDER LOAD AT 264 PSI, OF 78 DEGREES C, AND A TENSILE STRENGTH OF 5,200 PSI. JOINTS SHALL BE FLUSH SOLVENT WELDED IN ACCORDANCE WITH THE MANUFACTURER'S INSTRUCTIONS. CONDUIT SHALL BE EQUAL TO CARLON POWER AND COMMUNICATIONS DUCT TYPE DB (DIRECT BURIAL). CONDUIT AND FITTINGS SHALL BE PRODUCED BY THE SAME MANUFACTURER.
- D. FLEXIBLE METAL CONDUIT SHALL ONLY BE USED FOR CONNECTIONS TO MOTORS, TRANSFORMERS, AND LIGHT FIXTURES. MAXIMUM LENGTH SHALL BE 6'-0".
6. CONDUCTORS:
- A. WIRES SHALL BE CONTINUOUS WITHOUT SPLICES OR TAPS IN CONDUIT RUNS. ALL SPLICES SHALL BE MADE IN JUNCTION, PULL, OR OUTLET BOXES. ALL WIRE SHALL BE INSTALLED IN CONDUIT, WIREWAYS, OR OTHER PROTECTIVE COVER SANCTIONED BY CODES.
- B. CONDUCTORS FOR LIGHTING AND POWER SHALL BE COPPER, MINIMUM NO. 12 A.W.G., 600 VOLT.
- C. NO. 10 GAUGE AND SMALLER CONDUCTORS SHALL BE TYPE THHN (WET LOCATIONS) OR THHN (DRY LOCATIONS), SOLID CONDUCTOR, UNLESS OTHERWISE INDICATED.
- D. NO. 8 GAUGE AND LARGER CONDUCTORS SHALL BE TYPE THHN (WET LOCATIONS) OR THHN (DRY LOCATIONS), STRANDED, UNLESS OTHERWISE INDICATED.
- E. SERVICE ENTRANCE AND PANEL FEEDER CONDUCTORS, NO. 3 GAUGE AND LARGER SHALL BE TYPE XHHW-2 (WET LOCATIONS) OR THHN (DRY LOCATIONS), STRANDED COPPER, UNLESS OTHERWISE INDICATED.
- F. ALUMINUM SERVICE WIRE MAY BE USED FOR SERVICE ENTRANCE CONDUCTORS AND/OR PANEL FEEDERS COPPER CONDUCTORS AS HEREINBEFORE SPECIFIED. ONLY ALL OTHER WIRING SHALL BE
- G. ALUMINUM CONDUCTORS SHALL BE TYPE XHHW-2, ALCLAM, "STABIL-OY" TYPE ALLOY CONDUCTORS UTILIZING "AA-8030" ALUMINUM ALLOY. CONDUCTORS SHALL BE UL LISTED.
- H. ALL ALUMINUM CONDUCTORS SHALL BE TERMINATED IN CONNECTIONS OR LUGS WHICH ARE DUAL RATED (AL/CU OR AL/ALU) AND ARE LISTED BY UL FOR USE WITH ALUMINUM OR COPPER CONDUCTORS AND SHALL BE SIZED TO ACCEPT ALUMINUM CONDUCTORS OF THE AMPACITY SPECIFIED.
7. MC CABLE:
- A. MC CABLE SHALL CONSIST OF INTERLOCK ARMORED CABLE MADE OF THREE OR FOUR TYPE THHN SOLID (#8 AWG AND LARGER MAY BE STRANDED) COPPER CONDUCTORS RATED 90°C FOR DRY LOCATIONS, WITH NYLON OR EQUIVALENT UL LISTED JACKET, PER UL STANDARD 83. THE THREE CONDUCTORS SHALL BE TWISTED TOGETHER WITH THE COPPER GROUNDING CONDUCTOR, SUITABLE FILLERS, AND WRAPPED IN BINDER TAPE. THE ASSEMBLY SHALL BE ARMORED WITH SPIRALLY WRAPPED INTERLOCKED ARMOR OF ALUMINUM OR GALVANIZED STEEL.
- B. CABLES SHALL BE TESTED IN ACCORDANCE WITH UL STANDARD 1569 FOR TYPE MC CABLE AND RATED AT 600 VOLTS, 90 DEG. C FOR DRY LOCATIONS AND 75 DEG. C FOR WET LOCATIONS.
8. WIRING DEVICES:
- A. WALL SWITCHES SHALL BE SPECIFICATION GRADE, QUIET TYPE, FLUSH TOGGLE SWITCH, RATED FOR 20 AMPS, WITH THERMOPLASTIC COVER PLATES:
- 1) SINGLE POLE: HUBBELL #CS1221-X, OR EQUAL.
- 2) THREE WAY: HUBBELL #CS1223-X, OR EQUAL.
- 3) AS SPECIFIED ON PLANS.
- B. RECEPTACLES SHALL BE SPECIFICATION GRADE, DUPLEX, GROUNDING, THREE-WIRE TYPE, RATED FOR 20 AMPS, WITH THERMOPLASTIC COVER PLATES. HUBBELL #CRSS2-X, OR EQUAL.
- C. GROUND FAULT INTERRUPTER RECEPTACLES (GFI) SHALL BE HUBBELL #GF20-XL, DEVICE COVER PLATES SHALL BE AS HEREINBEFORE SPECIFIED.
- D. ISOLATED GROUND RECEPTACLES (IG) SHALL BE HUBBELL #CRSS2IG, ORANGE COLOR. DEVICE COVER PLATES SHALL BE AS HEREINBEFORE SPECIFIED.
- E. RECEPTACLES OUTSIDE BUILDING AND WHERE NOTED AS WEATHERPROOF, SHALL BE LISTED WEATHER-RESISTANT HUBBELL #GFRT20-X OR EQUAL AND SHALL BE INSTALLED IN A WEATHERPROOF ENCLOSURE WHICH SHALL BE INTERMATIC #WP1010MOO OR #WP1010HMOO DECAST METAL WEATHERPROOF RECEPTACLE COVER. COVER SHALL BE WEATHER PROOF RATED WHILE IN USE.
- F. VERIFY DEVICES AND DEVICE COVERPLATES COLOR AND STYLE WITH ARCHITECT.
9. BOXES:
- A. HOT DIPPED GALVANIZED STEEL BOXES. PROVIDE TYPE TO SUIT CONDITIONS FOR INSTALLATION.
- B. ALL BOXES SHALL BE FLUSH MOUNTED, UNLESS INDICATED OTHERWISE.

ELECTRICAL SPECIFICATIONS (CONTINUED)

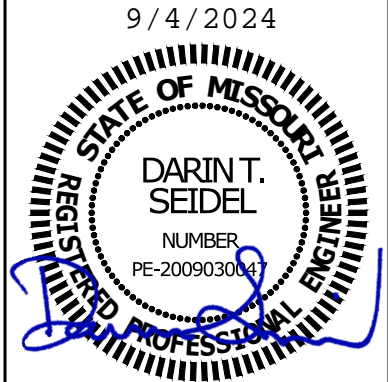
10. PANELBOARDS:
- A. FURNISH AND INSTALL CIRCUIT BREAKER PANELBOARDS AS SHOWN ON THE DRAWINGS. PANELBOARDS SHALL BE LISTED BY UL AND SO LABELED, AND SHALL BE FULLY RATED FOR THE VOLTAGE AND CURRENT CAPACITY INDICATED ON THE PANEL SCHEDULE. PANELBOARDS SHALL BE EQUAL TO SQUARE D TYPE NO. OR-N WITH RC-TN TYPE BREAKERS. PANELBOARD LUGS SHALL BE RATED AT 75°C.
- 1) CIRCUIT BREAKER INTERRUPTING CAPACITIES SHALL MEET OR EXCEED THE AVAILABLE RMS SYMMETRICAL FAULT CURRENTS INDICATED AND AS REQUIRED TO MEET OR EXCEED THE AVAILABLE FAULT CURRENT FROM LOCAL UTILITY.
- B. CIRCUIT BREAKERS SHALL MEET APPLICABLE PORTIONS OF UL STANDARD 489 AND NEMA AB-1. CIRCUIT BREAKERS SHALL BE BOX-TOP OR GROUP MOUNTED, AMBIENT MAGNETIC, WITH COMMON TRIP, UL RATED TO CARRY 80% OF NAMEPLATE RATING CONTINUOUSLY IN FREE AIR AT 40° C. CIRCUIT BREAKERS SHALL BE TRIP INDICATING AND FULLY INTERCHANGEABLE WITHOUT DISTURBING ADJACENT UNITS. WIRE TERMINALS SHALL BE RATED 75 DEGREES C. THE OPERATING MECHANISM SHALL BE TRIP-FREE SO THAT CONTACTS CANNOT BE HELD CLOSED AGAINST ANY ABNORMAL OVERCURRENT OR SHORT CIRCUIT CONDITION.
- #) BREAKERS SHALL MEET APPLICABLE NEMA AND/OR UL SPECIFICATIONS.
- C. PANELBOARD BOXES SHALL BE GALVANIZED SHEET STEEL, WITH AMPLE WIRING CUTTER SPACE IN ACCORDANCE WITH NEC. FRONTS SHALL BE OF SHEET STEEL, PAINTED LIGHT GREY OVER A SUITABLE RUST INHIBITOR PRIMER. PANELBOARDS SHALL BE EQUIPPED WITH ONE PIECE LOCK, CYLINDER TUMBLER TYPE LOCK, DIRECTORY CARD-HOLDER AND QUARTER-TURN ADJUSTABLE TRIM CLAMPS.
- D. PANELBOARD INTERIORS SHALL CONSIST OF REINFORCED GALVANIZED SHEET STEEL FRAMES WITH ALUMINUM BUS BARS AND CIRCUIT BREAKERS, PROPERLY SUPPORTED TO PREVENT VIBRATIONS AND BREAKAGE IN HANDLING. BUS BARS SHALL BE SEQUENCE PHASED. PANELBOARD SHALL HAVE A FULL SIZED SOLID ALUMINUM NEUTRAL AND GROUND BUS.
- E. BUS BAR BRACING SHALL BE UL LISTED AS INDICATED ON DRAWINGS. ADDITIONAL BRACING SHALL BE PROVIDED AS REQUIRED TO MEET OR EXCEED INDICATED AVAILABLE FAULT CURRENTS.
- F. DIRECTORY CARDS SHALL BE COMPLETELY FILLED IN BY TYPEWRITER, LISTING CIRCUIT NUMBERS AND LOAD SERVED, INCLUDING EXISTING CIRCUITS. CIRCUIT BREAKERS SHALL BE IDENTIFIED BY CIRCUIT NUMBER LABELS AS HEREINBEFORE SPECIFIED.
11. DISCONNECTS:
- A. DISCONNECTS SHALL BE EXTERNALLY OPERATED, QUICK-MAKE, QUICK-BREAK, SAFETY, WITH PROVISIONS FOR PAD LOCKING. FUSED AND NON-FUSED DISCONNECT SWITCHES SHALL BE PROVIDED AS INDICATED.
- B. INDOOR SWITCHES SHALL BE NEMA 1 AND OUTDOOR SWITCHES SHALL BE NEMA 3R, UNLESS INDICATED OTHERWISE.
12. FUSES:
- A. FUSES PROTECTING CIRCUIT BREAKER PANELS SHALL BE CURRENT LIMITING UL, CLASS RK-1 FUSES WITH 200,000 AMPS RMS SYM INTERRUPTING CAPACITY. FUSING ELEMENTS SHALL BE SILVER FOR RATINGS ABOVE 60 AMPERES.
- B. ALL OTHER FUSES SHALL BE UL, CLASS RK-5, DUAL-ELEMENT WITH A MINIMUM TIME-DELAY OF 10 SECONDS AT 500% RATING. FUSES SHALL HAVE CURRENT-LIMITING SHORT-CIRCUIT LINKS AND 200,000 AMPERES RMS SYM INTERRUPTING CAPACITY. FUSING ELEMENTS SHALL BE COPPER.
13. LIGHT FIXTURES:
- A. WHERE LIGHT FIXTURES ARE MOUNTED IN A LAY-IN CEILING, PROVIDE A MINIMUM OF 2 SUPPORT WIRES ATTACHED DIRECTLY BETWEEN EACH LIGHT FIXTURE AND THE BUILDING STRUCTURE. SUPPORT WIRES SHALL BE A MINIMUM OF 12 GAUGE GALVANIZED STEEL WIRE, SOFT ANNEALED.
- B. FIXTURES ARE REQUIRED AT ALL LIGHTING OUTLETS SHOWN ON THE DRAWINGS. APPROVED LIGHTING FIXTURE WIRE IS REQUIRED IN ALL FIXTURES AND FIXTURE RACEWAYS. WEATHERPROOF WIRING IS REQUIRED FOR EXTERIOR FIXTURES. ALL PARTS OF FIXTURES AND WIRING SHALL BE IN ACCORDANCE WITH NEC REQUIREMENTS.
- C. ALL FIXTURES SHALL CARRY UL AND ETL LABELS.
14. SLEEVES:
- A. PROVIDE, SET, AND PROPERLY LOCATE PIPE SLEEVES AS REQUIRED FOR THIS WORK.
- B. INTERIOR PARTITIONS: 16 GAGE GALVANIZED STEEL, PACK BETWEEN CONDUIT AND SLEEVE WITH FIRE SAFING AND CAULK AT EACH END WITH FIRE RESISTANT SEALANT.
- C. ROOF: PROSET OR EQUAL, MANUFACTURED PVC SCHEDULE 40 PIPE SLEEVE WITH WEATHERPROOF SEAL. COORDINATE WITH ROOFING CONTRACTOR AND FLASH AS REQUIRED TO MAINTAIN ROOF WARRANTY.
15. GROUNDINGS:
- A. GROUND ALL ELECTRICAL APPARATUS IN ACCORDANCE WITH THE NATIONAL ELECTRIC CODE (NEC) 250, AND ANY LOCAL REQUIREMENTS. INSURE CONTINUOUS BOND WHERE FLEXIBLE CONDUIT IS USED. PROVIDE BONDING JUMPER INSIDE ALL FLEXIBLE CONDUIT.
- B. BOND METAL PIPING SYSTEMS IN COMPLIANCE WITH NEC 250.4(A)(4).
16. REMODELING WORK:
- A. DEMOLITION, DISCONNECT, DEMOLISH AND REMOVE ABANDONED ELECTRICAL MATERIALS AND EQUIPMENT INDICATED TO BE REMOVED AND NOT INDICATED TO BE SALVAGED OR REMAIN.
- B. EQUIPMENT TO BE SALVAGED:
- 1) DISCONNECT AND REMOVE EXISTING ELECTRICAL EQUIPMENT INDICATED TO BE REMOVED AND SALVAGED. DELIVER EQUIPMENT TO THE LOCATION DESIGNATED BY THE OWNER FOR STORAGE.
- 2) ALL MATERIALS AND EQUIPMENT DESIGNATED TO BE REUSED OR RELOCATED SHALL BE CAREFULLY REMOVED, AND STORED UNTIL NEEDED FOR REMODELING WORK. ALL ITEMS SHALL BE RESTORED TO "LIKE NEW" CONDITION WITH RUST OR CORROSION REMOVED, SURFACE PAINT TOUCHED UP OR REPAINTED AS REQUIRED TO MATCH NEW CONSTRUCTION, AND THOROUGHLY CLEANED AND INSPECTED. ANY ITEMS WHICH BECOME DAMAGED BEYOND REPAIR AS A RESULT OF CONSTRUCTION OR DEMOLITION ACTIVITY SHALL BE REPLACED WITH NEW MATERIAL EQUIVALENT IN EVERY RESPECT.
- C. DISPOSAL AND CLEANUP: REMOVE FROM THE SITE AND LEGALLY DISPOSE OF DEMOLISHED MATERIALS AND EQUIPMENT NOT INDICATED TO BE SALVAGED.
- D. PROTECT ADJACENT MATERIALS INDICATED TO REMAIN. INSTALL AND MAINTAIN DUST AND NOISE BARRIERS TO KEEP DIRT, DUST, AND NOISE FROM BEING TRANSMITTED TO ADJACENT AREAS. REMOVE PROTECTION AND BARRIERS AFTER REMODELING OPERATIONS ARE COMPLETE.
- E. PROVIDE ALL ALTERATIONS AND REWORK INDICATED AND/OR REQUIRED FOR THE PROPER INSTALLATION AND OPERATION OF ALL EXISTING ELECTRICAL SYSTEMS, INTEGRATING THE NEW AND EXISTING AREAS, LOCATE, IDENTIFY, AND PROTECT ELECTRICAL SERVICES PASSING THROUGH REMODELING AREA AND SERVING OTHER AREAS OUTSIDE THE REMODELING LIMITS. MAINTAIN SERVICES TO AREAS OUTSIDE REMODELING LIMITS. WHEN SERVICES MUST BE INTERRUPTED, INSTALL TEMPORARY SERVICES FOR AFFECTED AREAS.
- 1) ABANDONED CONDUIT SHALL HAVE WIRE REMOVED AND SHALL BE CAPPED. ABANDONED OUTLETS IN WALLS OR PARTITIONS SHALL HAVE DEVICES AND WIRE REMOVED, AND SHALL BE COVERED.
- 2) WHERE EXISTING CONDUITS TERMINATE AT AN EXISTING OUTLET IN A WALL, CEILING, OR FLOOR TO BE REMOVED, DISCONNECT AND REMOVE DEVICE AND WIRE FROM CONDUIT. CONDUIT SHALL BE CUT BACK AND CAPPED (BELOW THE FLOOR OR ABOVE THE CEILING) SO NOT TO CREATE AN OBSTRUCTION. PATCH FLOOR TO MATCH EXISTING.
- 3) WHERE EXISTING CIRCUITS EXTEND BEYOND THE OUTLET IN THE EXISTING WALL, CEILING, OR FLOOR TO BE REMOVED, FURNISH AND INSTALL NEW CONDUIT AND WIRE TO EITHER REROUTE THE CIRCUIT OR FEED THE REMAINING OUTLET(S) FROM ANOTHER ELECTRICAL SOURCE, BUT IN SUCH A MANNER AS NOT TO REVISE THE CIRCUIT. ALL REROUTED CONDUIT SHALL BE APPROVED BY THE ARCHITECT.
- 4) WHERE EXISTING OUTLETS IN A WALL, CEILING, OR FLOOR TO BE REMOVED ARE ESSENTIAL TO MAINTAIN OPERATION OF OTHER REMAINING OUTLETS, RELOCATE THE OUTLET TO A NEW CONVENIENT LOCATION. EXISTING WIRING DEVICES SHALL NOT BE REUSED, UNLESS OTHERWISE INDICATED.
- 5) WHERE LIGHTING FIXTURES ARE INDICATED TO BE DEMOLISHED, REMOVE ALL WIRE AND MODIFY THE EXISTING CONDUIT (IF APPLICABLE) FOR THE NEW LIGHTING. ALL UNUSED CONDUIT SHALL BE REMOVED.
- 6) WHERE A TELEPHONE CIRCUIT EXTENDS BEYOND AN OUTLET IN AN EXISTING WALL, CEILING, OR FLOOR TO BE REMOVED, PROVIDE NECESSARY EMPTY CONDUIT AND NOTIFY THE OWNER WHO WILL REQUEST THE OWNER TO ARRANGE WITH THE TELEPHONE COMPANY FOR NEW WIRING TO OUTLETS THAT REMAIN.
- 7) WHERE EXISTING CONDUIT AND WIRE RUNS ARE LOCATED IN OR ATTACHED TO AN EXISTING WALL, CEILING OR FLOOR TO BE REMOVED, THEY SHALL BE REROUTED IN EITHER NEW OR EXISTING CONSTRUCTION TO MAINTAIN CONTINUITY OF CIRCUITS UNLESS OTHERWISE INDICATED.
- 8) CONDUIT SHALL BE CONCEALED WITHIN THE EXISTING BUILDING CONSTRUCTION WHEREVER POSSIBLE, EXCEPT WHERE OTHERWISE INDICATED.
- 9) EXISTING WIRE SHALL BE DISCONNECTED AND REMOVED WHEREVER EXISTING CIRCUITS ARE ABANDONED.
17. BOXES IN FIRE RATED ASSEMBLIES:
- A. OUTLET BOXES THAT DO NOT EXCEED 16 SQUARE INCHES AND INSTALLED IN FIRE RATED WALLS SHALL NOT BE INSTALLED CLOSER THAN 2" HORIZONTAL INCHES TO OTHER OUTLET BOXES.
- B. IF BOXES MUST BE INSTALLED WITHIN 2" OF EACH OTHER THAN BOTH OUTLET BOXES SHALL BE PROTECTED WITH LISTED PUTTY PADS, 3M FIRE BARRIER MOLDABLE PUTTY + OR EQUAL.

ELECTRICAL SYMBOLS LIST	
CIRCUITING & NOTES	
+46"	SPECIAL MOUNTING HEIGHT FOR ASSOCIATED DEVICE (CENTERLINE OF DEVICE)
GFI	GROUND FAULT CIRCUIT INTERRUPTER DEVICE
(E)	EXISTING DEVICE TO REMAIN
(R)	RELOCATE EXISTING LIGHT FIXTURE TO NEW CEILING GRID
	ELECTRICAL FLOOR PLAN NOTE WITH DESIGNATION
	CONDUIT CONCEALED WHERE POSSIBLE OR AS NOTED, ARROWS INDICATE HOME RUN TO PANEL. CIRCUIT NUMBERS INDICATED
	#12 WIRE IN CONDUIT, UNLESS NOTED OTHERWISE ON DRAWINGS OR SPECIFICATION
	GROUNDING CONDUCTOR, #12 WIRE UNLESS NOTED OTHERWISE ON DRAWINGS OR SPECIFICATION
LIGHTING	
	EMERGENCY TWIN HEAD LIGHT FIXTURE
	EXIT LIGHT WITH DIRECTIONAL ARROWS INDICATED
	RECESSED OR SURFACE MOUNTED FIXTURE WITH TYPE DESIGNATION
POWER DEVICES	
	DUPLEX RECEPTACLE, BOTTOM OF BOX AT 16" AFF, UNLESS NOTED OTHERWISE
	DEVICE MOUNTED ABOVE COUNTER AND/OR SPLASH GUARD
	PANEL BOARD, TOP OF BOX 6'-0" AFF
	JUNCTION BOX
	NON-FUSED DISCONNECT SWITCH
	FUSED DISCONNECT SWITCH
	MOTOR WITH DESIGNATION
CONTROLS	
S	SINGLE POLE WALL SWITCH, TOP OF BOX AT 48" AFF
OCCUPANCY SENSORS	
S o	WALL MOUNTED DUAL-TECHNOLOGY OCCUPANCY SENSOR, ACUITY SENSOR SWITCH #WSX-PDT-SA OR EQUAL, TOP OF BOX AT 48" AFF. SENSORS SHALL BE PROGRAMMED FOR MANUAL-ON OPERATION.
COMMUNICATIONS	
	DATA/TELEPHONE OUTLET WITH MINIMUM 3/4" CONDUIT STUBBED UP TO ABOVE ACCESSIBLE CEILING, BOTTOM OF BOX AT 16", UNLESS NOTED OTHERWISE. PROVIDE WITH PULL STRING
FIRE ALARM	
	DUCT MOUNT SMOKE DETECTOR

ELECTRICAL GENERAL NOTES:

1. COORDINATE ALL WORK WITH OTHER TRADES AND EXISTING CONDITIONS AS REQUIRED TO PROPERLY INSTALL ALL SYSTEMS AS INTENDED, WITHIN THE CONFINES OF THE SPACES AVAILABLE, AND WITHOUT INTERFERENCES.
2. IT IS THE ELECTRICAL CONTRACTORS RESPONSIBILITY TO PROPERLY BALANCE ALL BRANCH CIRCUITS BETWEEN THE PHASES OF THE SYSTEM REGARDLESS OF CIRCUITING INDICATED.
3. ALL EXPOSED RACEWAYS SHALL BE EMT CONDUIT, MC CABLE IS NOT PERMITTED IN EXPOSED AREAS.
4. ELECTRICAL CONTRACTOR SHALL REMOVE ALL EXISTING ELECTRICAL EQUIPMENT, FIXTURES, SYSTEMS, CONDUIT AND WIRE, ETC. NOT BEING REUSED. DO NOT JUST ABANDON.
5. ELECTRICAL CONTRACTOR TO COORDINATE MANUFACTURER ELECTRICAL REQUIREMENTS FOR HVAC EQUIPMENT BEING FURNISHED WITH MECHANICAL CONTRACTOR PRIOR TO ROUGH-IN. EQUIPMENT DISCONNECTS TO BE PROVIDED BY ELECTRICAL CONTRACTOR UNLESS NOTED OTHERWISE IN MECHANICAL SCHEDULES.
6. ALL ELECTRICAL DEVICES ARE EXISTING AND TO REMAIN UNLESS NOTED. OTHERWISE OR CONFLICT WITH NEW CONSTRUCTION. MAINTAIN PROPER OPERATION OF ALL EXISTING ELECTRICAL.
7. ALL MATERIALS EXPOSED WITHIN PLENUMS SHALL BE NONCOMBUSTIBLE OR SHALL HAVE A FLAME SPREAD INDEX OF NOT MORE THAN 25 AND A SMOKE-DEVELOPED INDEX OF NOT MORE THAN 50 WHEN TESTED IN ACCORDANCE WITH ASTM E 84.
8. EACH BRANCH CIRCUIT SHALL HAVE A DEDICATED NEUTRAL PER NEC 210.4.
9. PLANS INDICATE MINIMUM WIRE SIZES PER NEC. ALL BRANCH CIRCUITS SHALL BE SIZED TO ALLOW FOR A MAXIMUM OF 3% VOLTAGE DROP. ALL FEEDERS SHALL BE SIZED TO ALLOW FOR A MAXIMUM OF 2% VOLTAGE DROP. ELECTRICAL CONTRACTOR SHALL VERIFY WIRING INDICATED IS SUFFICIENT AND INCREASE CONDUCTOR SIZE AS REQUIRED BASED OFF ACTUAL INSTALLED LENGTH OF CONDUCTORS.
10. WHEREVER POSSIBLE, CONDUIT SHALL BE RUN CONCEALED WITHIN WALLS, CEILINGS, SOFFITS, ETC. SURFACE MOUNTED CONDUIT IN FINISHED SPACES MUST BE APPROVED BY THE ENGINEER OR ARCHITECT PRIOR TO INSTALLATION. EXTERIOR CONDUIT SHALL NOT BE RUN EXPOSED IN PUBLICLY VISIBLE AREAS WITHOUT APPROVAL OF THE ARCHITECT OR ENGINEER.

David Eskov
Architect
2146G w 120th st
Olathe, KS 66061
eskovarch@outlook.com
913-284-3660



PERMIT
JULY 25, 2024

Revisions
AUGUST 13, 2024
SEPTEMBER 4, 2024

TENANT SPLIT PHASE 2
EXECUTIVE LAKES
5000 NE LAKEWOOD PARKWAY
LEES SUMMIT, MO

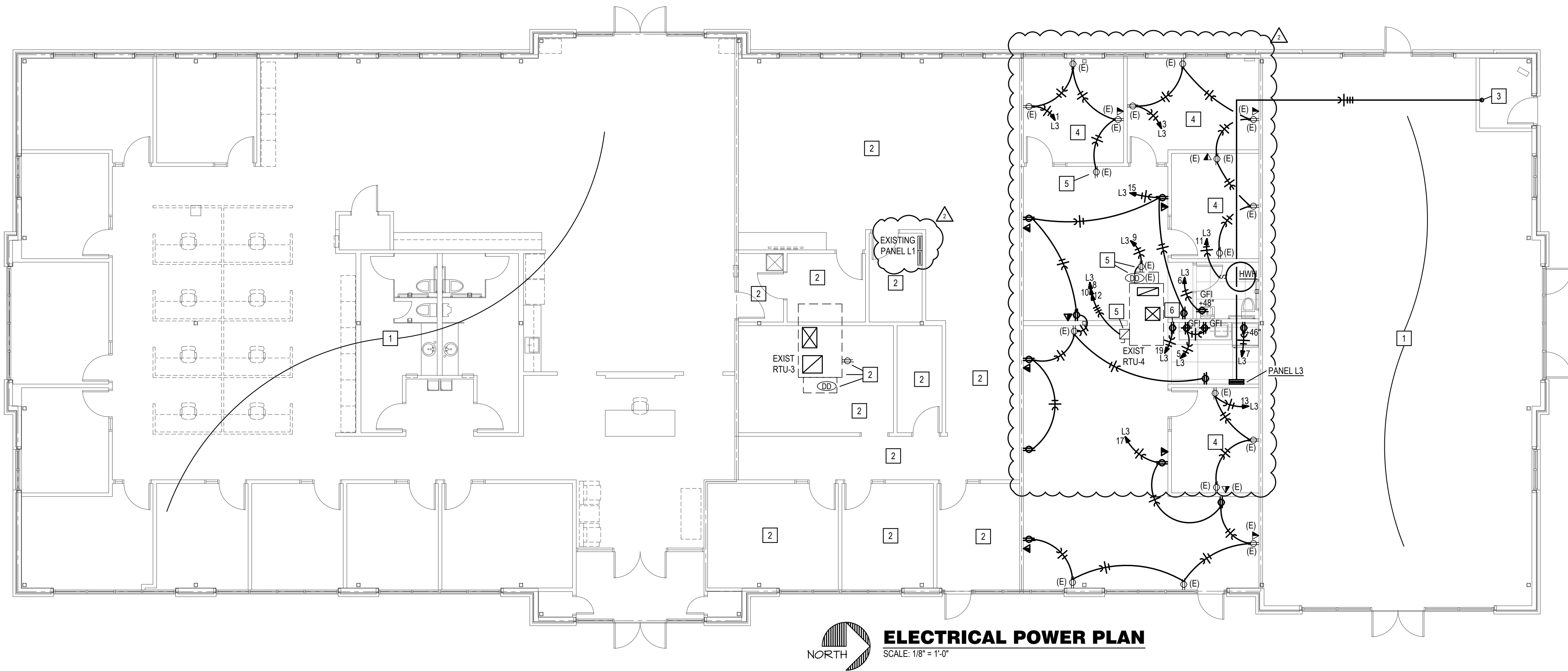
BC PROJECT #: 24543
MISSOURI PE COA #2009003629

This drawing has been prepared by the Engineer, or under his supervision. This drawing is provided as an instrument of service by the Designer/Engineer and is intended for use on this project only. Pursuant to the Architecture Works Copyright Protection Act of 1980, all drawings, specifications, ideas and designs, including the overall form, arrangement and composition of spaces and elements appearing herein, constitute the original, copyrighted work of the Designer/Engineer. Any reproduction, use, or disclosure of information contained herein without prior written consent of the Engineer is strictly prohibited. © 2024 BC Engineers, Inc.

BC ENGINEERS
INCORPORATED

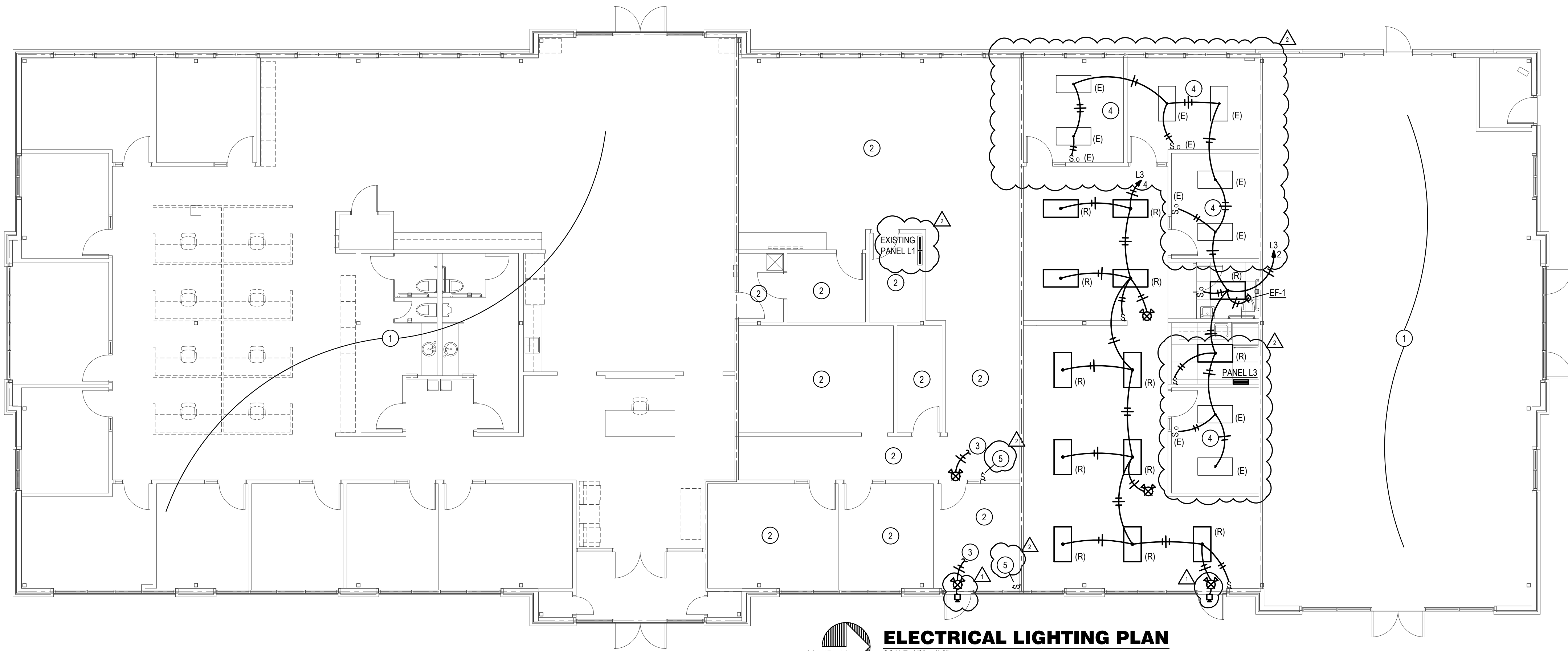
5720 Reeder Shawnee, KS 66203 (913)262-1772

sheet
E0.0
ELECTRICAL
SPECIFICATIONS



ELECTRICAL POWER PLAN
SCALE: 1/8" = 1'-0"

- POWER PLAN NOTES:**
- 1 EXISTING ADJACENT TENANT TO REMAIN.
 - 2 EXISTING RECEPTACLES IN THIS SPACE, ON EXISTING CIRCUIT, TO REMAIN. REWIRE, WHERE REQUIRED, TO MAINTAIN A COMPLETE AND OPERABLE SYSTEM.
 - 3 INTERCEPT EXISTING 2.5" STUB IN LANDLORD UTILITY ROOM AND EXTEND TO NEW PANEL L3 LOCATION AS REQUIRED.
 - 4 EXISTING RECEPTACLES IN THIS SPACE TO REMAIN. CIRCUIT AS INDICATED.
 - 5 EXISTING RECEPTACLE, DISCONNECT, OR OTHER DEVICE TO REMAIN. CIRCUIT AS INDICATED.
 - 6 RECEPTACLE FOR WATER DISPENSER. COORDINATE WITH MANUFACTURER'S REQUIREMENTS.



ELECTRICAL LIGHTING PLAN
SCALE: 1/8" = 1'-0"

- LIGHTING PLAN NOTES:**
- 1 EXISTING ADJACENT TENANT TO REMAIN.
 - 2 EXISTING LIGHTS AND CONTROLS IN THIS SPACE, ON EXISTING CIRCUIT, TO REMAIN. REWIRE, WHERE REQUIRED, TO MAINTAIN A COMPLETE AND OPERABLE SYSTEM.
 - 3 CONNECT TO LIGHTING CIRCUIT SERVING THIS ROOM. PROVIDE UNSWITCHED "HOT" CONDUCTOR ROUTED AHEAD OF LIGHTING CONTROLS.
 - 4 EXISTING LIGHTS AND CONTROLS IN THIS SPACE TO REMAIN. CIRCUIT AS INDICATED.
 - 5 PROVIDE NEW LIGHT SWITCH FOR CONTROL OF LIGHTS IN THIS AREA.

BC PROJECT #: 24543
MISSOURI PE COA #2009003629

This drawing has been prepared by the Engineer, or under the supervision. This drawing is provided as an instrument of service by the Designer/Engineer and is intended for use on the project only. Pursuant to the Architecture Works Copyright Protection Act of 1980, all drawings, specifications, ideas and designs, including the overall form, arrangement and composition of spaces and elements appearing herein, constitute the original, copyrighted work of the Designer/Engineer. Any reproduction, use, or disclosure of information contained herein without prior written consent of the Engineer is strictly prohibited. © 2024 BC Engineers, Inc.

BC ENGINEERS INCORPORATED

5720 Reeder Shawnee, KS 66203 (913)262-1772

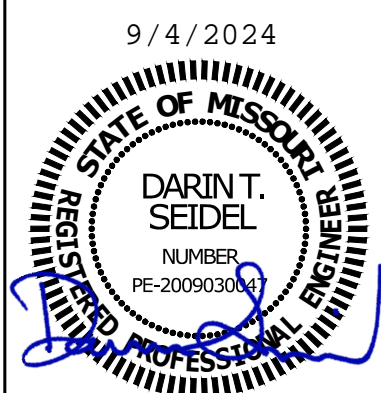
David Eskov
Architect
21466 w 120th st
Olathe, KS 66061
eskovarch@outlook.com
913-284-3660

9/4/2024

PERMIT
JULY 25, 2024

Revisions
AUGUST 13, 2024
SEPTEMBER 4, 2024

TENANT SPLIT PHASE 2
EXECUTIVE LAKES
5000 NE LAKEWOOD PARKWAY
LEES SUMMIT, MO



PERMIT
JULY 25, 2024

Revisions
AUGUST 13, 2024
SEPTEMBER 4, 2024

TENANT SPLIT PHASE 2
EXECUTIVE LAKES
5000 NE LAKEWOOD PARKWAY
LEES SUMMIT, MO

PANEL: L3				VOLTS: 120/208V				PH: 3Ø		WIRE: 4W		LOCATION: BREAK ROOM		MOUNTING: SURFACE		
BUS: 225A				MAIN: 200A		MLO		IC: 10,000		RMS SYM AMPS				FEEDER: SEE RISER DIAGRAM		
CKT	DESCRIPTION	AMPS	POLE	WIRE	ØA	ØB	ØC	ØA	ØB	ØC	WIRE	POLE	AMPS	DESCRIPTION	CKT NO	
1	EXIST OFFICE RECEPTACLES	20	1	12	720			990			12	1	20	LIGHTING	2	
3	EXIST OFFICE RECEPTACLES	20	1	12		1,080				1,055	12	1	20	LIGHTING	4	
5	RECEPTS - KITCHENETTE	20	1	12			360				180	12	1	20	REC - RESTROOM	6
7	REFRIGERATOR (GF)	20	1	12	1,200			3,360								8
9	EXIST RTU RECEPTACLE	20	1	12		360				3,360		8	3	35	EXIST RTU-4	10
11	WATER HEATER HHW	30	1	10			2,500				3,360					12
13	EXIST OFFICE RECEPTACLES	20	1	12	540							1	20	SPARE	14	
15	OFFICE RECEPTACLES	20	1	12		1,440						1	20	SPARE	16	
17	OFFICE RECEPTACLES	20	1	12			1,080					1	20	SPARE	18	
19	RECEPT - WATER DISPENSER (GF)	20	1	12	180							1	20	SPARE	20	
21	SPARE	20	1									1	20	SPARE	22	
23	SPARE	20	1									1	20	SPARE	24	
25	BUSSED SPACE													BUSSED SPACE	26	
27	BUSSED SPACE													BUSSED SPACE	28	
29	BUSSED SPACE													BUSSED SPACE	30	
31	BUSSED SPACE													BUSSED SPACE	32	
33	BUSSED SPACE													BUSSED SPACE	34	
35	BUSSED SPACE													BUSSED SPACE	36	
37	BUSSED SPACE													BUSSED SPACE	38	
39	BUSSED SPACE													BUSSED SPACE	40	
41	BUSSED SPACE													BUSSED SPACE	42	

NOTES:
(GF)-GFCI BRKR 5mA

2,6402,8803,9404,3504,4153,540

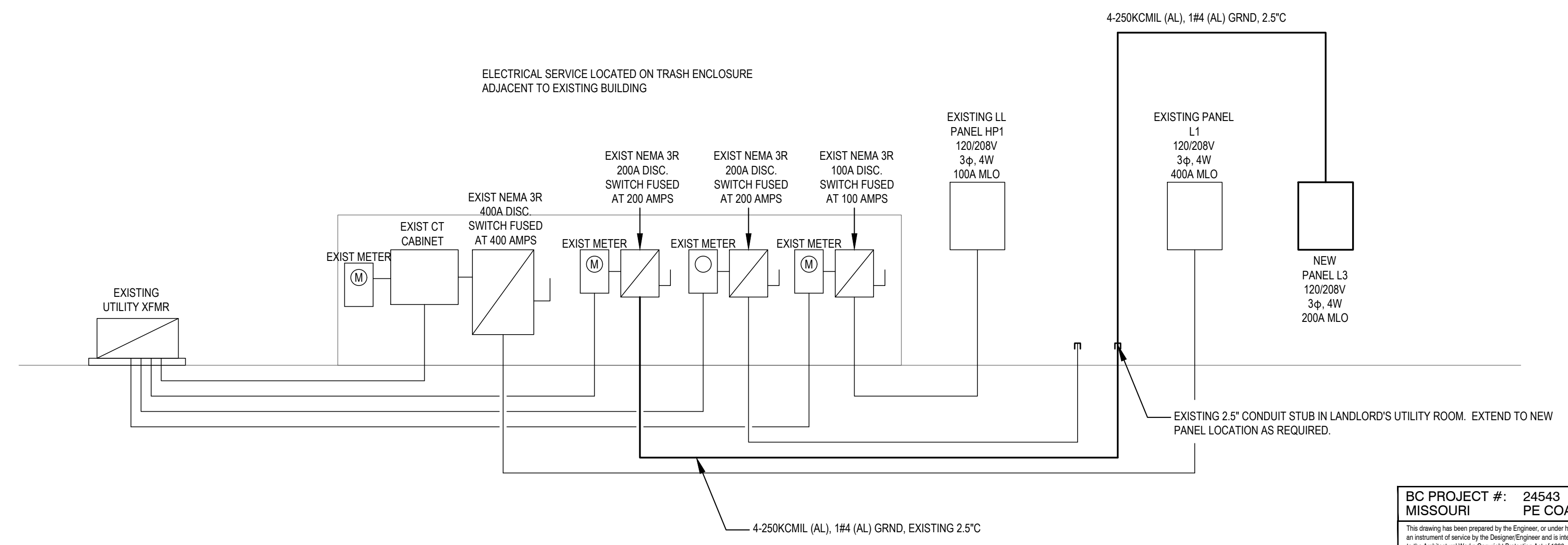
6,9907,2967,480

TOTAL CONNECTED LOAD:21,766 VA

NEC DEMAND LOAD:22,903 VA

DEMAND AMPS @ 208 VOLT / 3Ø:63.57 A

LIGHT FIXTURE SCHEDULE					
MARK NO.	MANUFACTURER & CATALOG NUMBER	VOLTS WATTS	LIGHT SOURCE	DESCRIPTION	EQUIVALENT MANUFACTURERS
18	DUAL-LITE EVC-U-R-W	120 3	INCL	COMBINATION EMERGENCY/EXIT LIGHT WITH LED LAMPS, RED LETTERS ON WHITE BACKGROUND, TWIN LED EMERGENCY LIGHT HEADS, UNIVERSAL MOUNT, BATTERY BACKUP	SURE-LITES LITHONIA OR EQUAL
19	DUAL-LITE EVC-U-R-W-D4 WITH EVO-D-X	120 5	INCL	COMBINATION EMERGENCY/EXIT LIGHT WITH LED LAMPS, RED LETTERS ON WHITE BACKGROUND, TWIN 6W EMERGENCY LIGHT HEADS, UNIVERSAL MOUNT, HIGH CAPACITY BATTERY BACKUP AND REMOTE TWIN HEAD OUTDOOR RATED FIXTURE	SURE-LITES LITHONIA OR EQUAL



ELECTRICAL RISER DIAGRAM
SCALE: NONE

BC PROJECT #: 24543
MISSOURI PE COA #2009003629
This drawing has been prepared by the Engineer, or under the supervision. This drawing is provided as an instrument of service by the Designer/Engineer and is intended for use on the project only. Payment to the Architectural Works Copyright Protection Act of 1980, all drawings, specifications, ideas and designs, including the overall form, arrangement and composition of spaces and elements appearing herein, constitute the original, copyrighted work of the Designer/Engineer. Any reproduction, use, or disclosure of information contained herein without prior written consent of the Engineer is strictly prohibited. © 2024 BC Engineers, Inc.

