

Customer
Clayton Properties

Job Name:
Riverside - Modern Farmhouse 3car

3207 Arboridge Circle

Kyle Clifford

Michael Dueker

ROOF LOADING CRITERIA

Scale:

NTS

TOP CHORD DEAD LOAD (TCDL)

Date: _____

BOTTOM CHORD LIVE LOAD (BCLL)

7/25

BOTTOM CHORD DEAD LOAD

1125

DEFLECTION: (LIVE) (TO
WIND SPEED: 5

Job #:

WIND SPEED: EX
BUILDING CODE: IRC 2015

P24

TRUSS PLACEMENT DIAGRAM

ROOF

RELEASE FOR CONSTRUCTION
AS NOTED ON PLANS REVIEW
DEVELOPMENT SERVICES
LEE'S SUMMIT, MISSOURI
09/03/2024 1:33:01

EVERSTEAD
SHOP DRAWINGS/SUBMITTAL REVIEW

SUBMITTAL WAS REVIEWED FOR DESIGN CONFORMITY AND GENERAL CONFORMANCE TO CONTRACT DOCUMENTS ONLY. THE CONTRACTOR IS RESPONSIBLE FOR CONFIRMING AND CORRELATING DIMENSIONS AT JOBSITE FOR TOLERANCE, CLEARANCE, QUANTITIES, FABRICATION, COORDINATION OF HIS OR HER WORK WITH OTHER TRADES, AND FULL COMPLIANCE WITH CONTRACT DOCUMENTS.




STATUS:
APPROVED

08/09/2024

REVIEWED BY:

BH

ENGINEER, EVERSTEAD ENGINEERING & DESIGN LLC

Top Height	
8-1-2	
9-1-2	
11-1-2	

Truss Connector Total List		
Qty	Product	Manuf
1	HHU210-2	Simpson
10	HUS26	Simpson
1	LUS24	Simpson
1	LUS26	Simpson

◀ - EL EXTREMO IZQUIERDO DE LOS TRUSSES (VEA LOS PERFILES)

TODAS LAS DIMENSIONES PARA LAS TRUSSES SON DE FUERA DE LA MADERA (u.n.o.)

ESTABLECER LOS TRUSSES NIVELADAS CON LA ESTRUCTURA (u.n.o.)

◀ - LEFT END OF TRUSS (SEE TRUSS PROFILES)

ALL ROOF TRUSS DIMENSIONS ARE FROM OUTSIDE EDGE OF STUD (u.n.o.)

SET ROOF TRUSSES FLUSH WITH FRAMING (u.n.o.)

WARNING: Trusses must be handled with care to prevent damage and injury.

This truss placement diagram is to be used only as an installation aid; it is not a structural diagram. These trusses are designed as individual building components to be incorporated into the building design at the specification of the building designer. See individual design sheets for each truss design identified on the placement drawing.

Professional advice should be sought regarding handling, installation, temporary and permanent bracing before erecting trusses. Temporary and permanent bracing is required during installation of trusses to prevent possible collapse.

For general guidance regarding bracing, consult "BCSI-06" available jointly from WTCA & TPI.

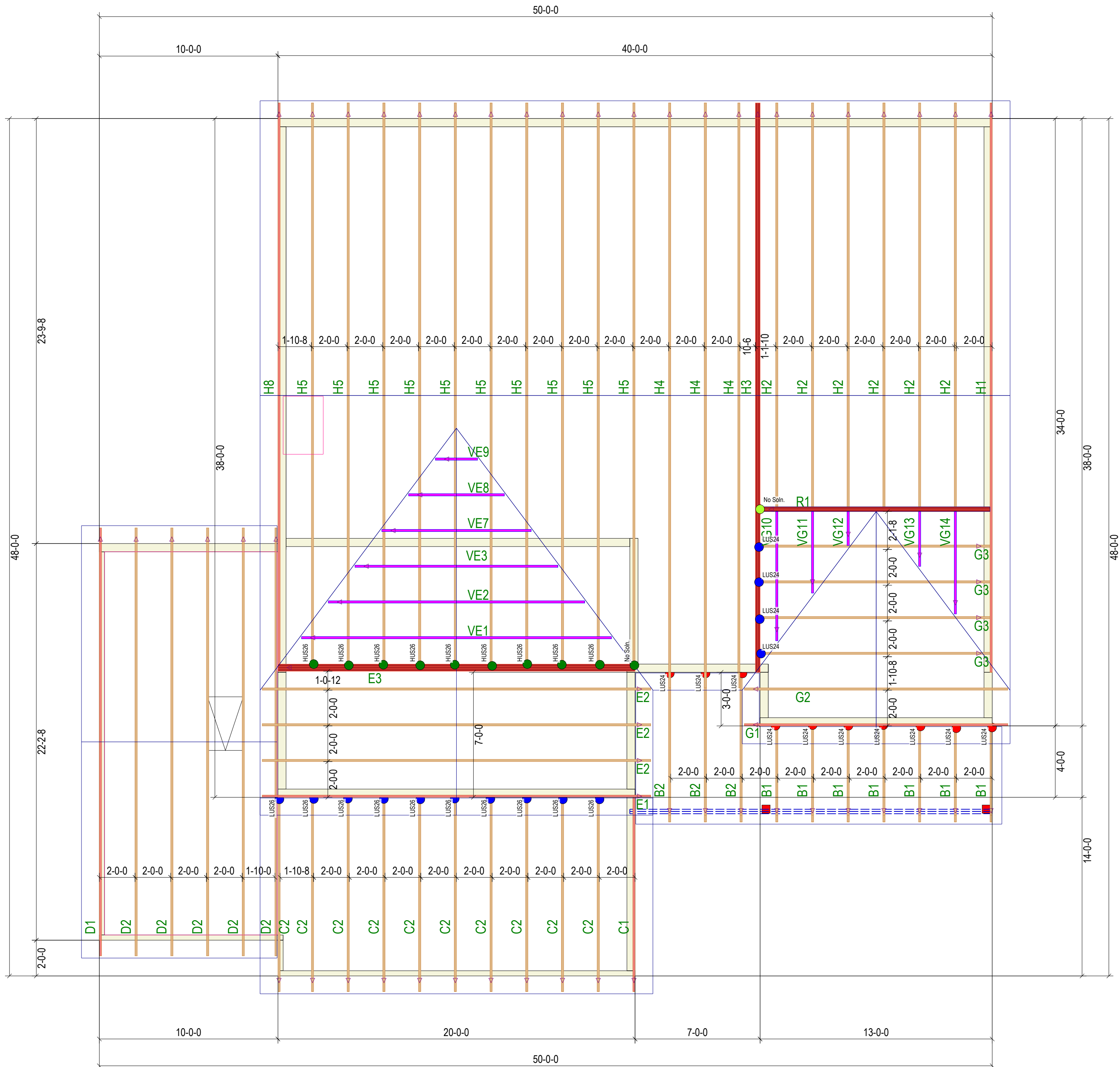
Premier Building Supply must be notified of any issues requiring a back charge prior to any work being done. Premier Building Supply reserves the right to use it's service staff in lieu of being back charged.

1 - H2.5T REQUIRED AT ALL BEARING LOCATIONS (u.n.o.)

ALL TRUSS TO TRUSS CONNECTIONS = "NAILED" (u.n.o.)

1 - H2.5T NECESARIO EN TODO LOS PUNTOS DE APOYO (u.n.o.)

TODAS LAS CONEXIONES DE TRUSS A TRUSS = 'CLAVADAS " (u.n.o.)



RELEASE FOR CONSTRUCTION
AS NOTED ON PLANS REVIEW
DEVELOPMENT SERVICES
LEE'S SUMMIT, MISSOURI
09/03/2024 1:32:51