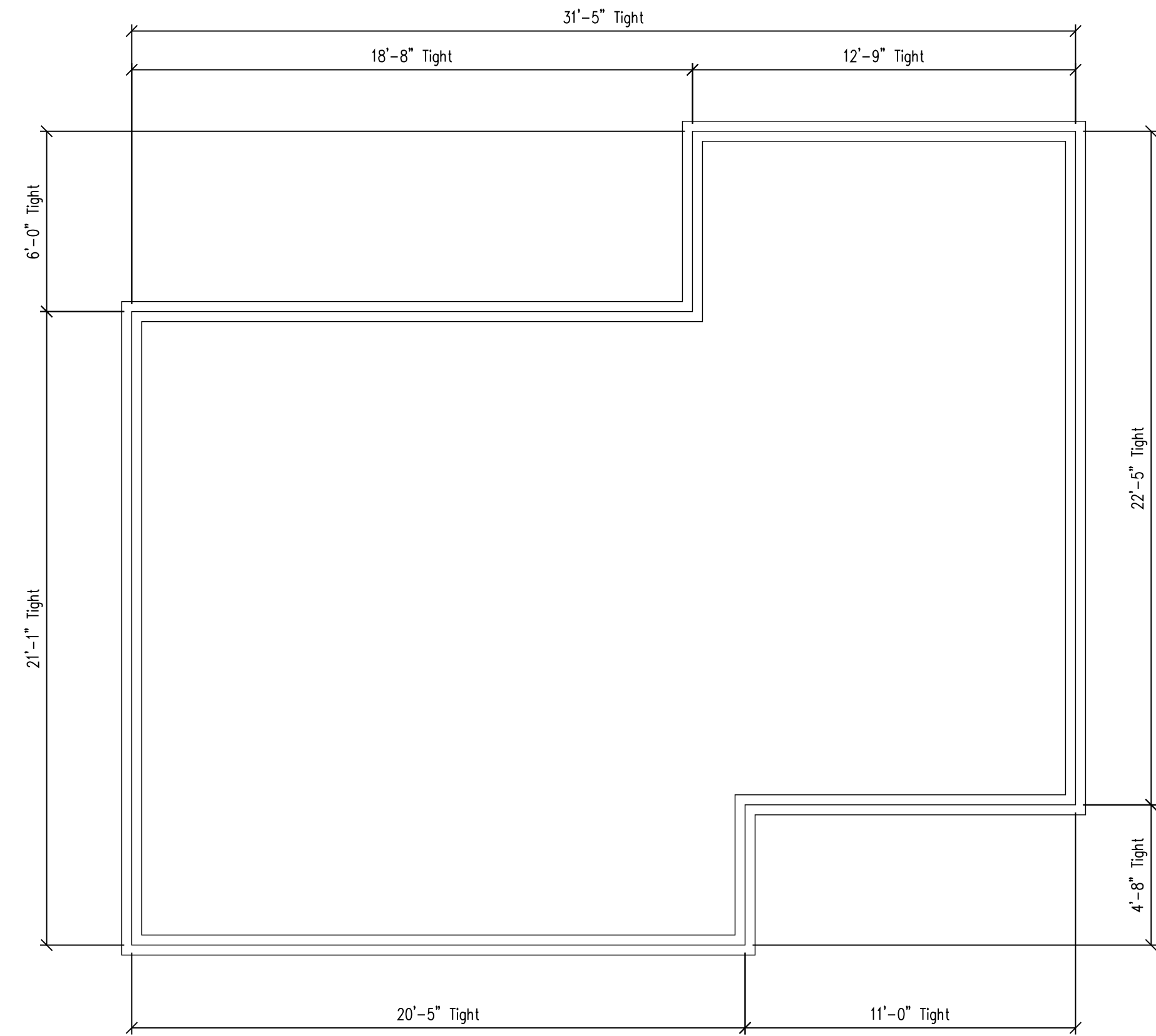
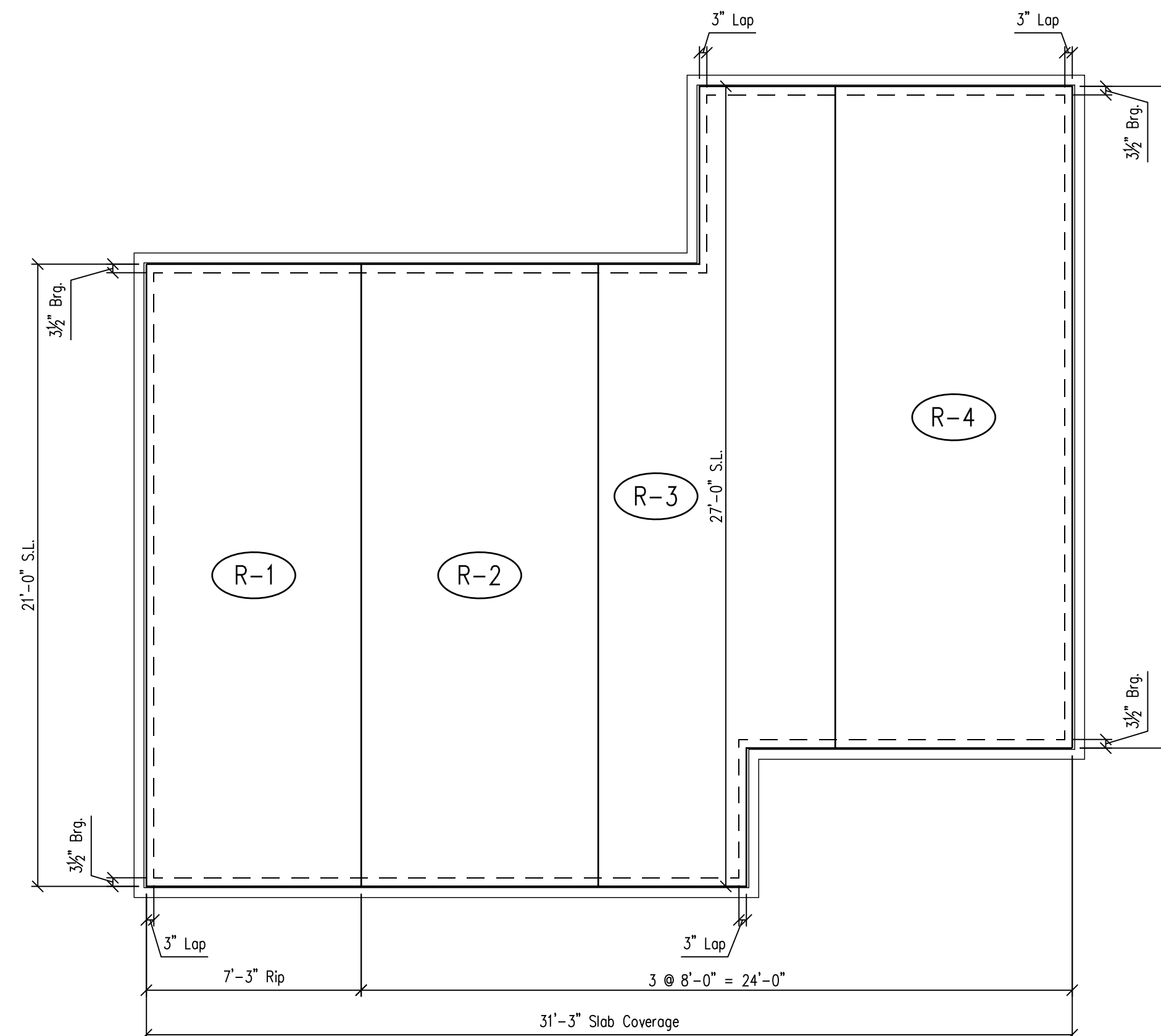


HOLLOW CORE SLAB SCHEDULE

MARK	QTY.	WIDTH and LENGTH	# of STRANDS per 8' WIDTH
R-1	1	7'-3" x 21'-0"	(8) 1/2" ϕ
R-2	1	8'-0" x 21'-0"	(8) 1/2" ϕ
R-3	1	8'-0" x 27'-0"	(10) 1/2" ϕ
R-4	1	8'-0" x 22'-4"	(8) 1/2" ϕ

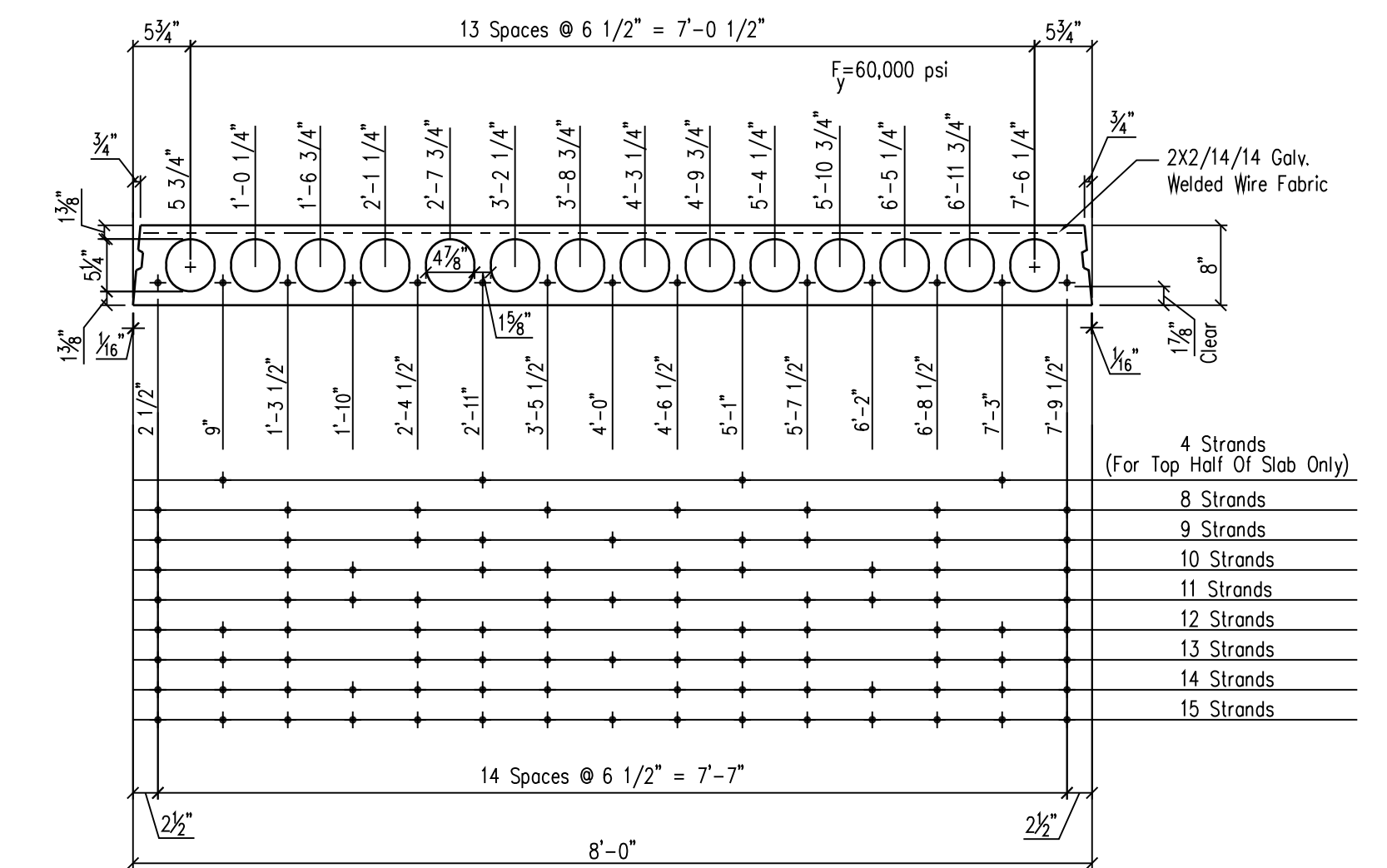


"TIGHT FIELD DIMENSIONS" - GARAGE FLOOR
1/4" = 1'-0"



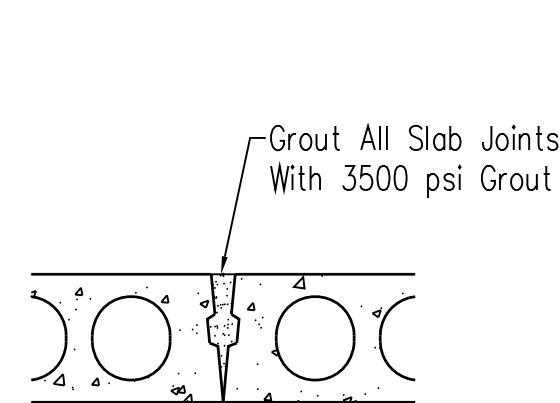
HOLLOW CORE PLAN - GARAGE FLOOR
1/4" = 1'-0"

8'-0"X8" HOLLOW-CORE SLAB SECTION AND PROPERTIES

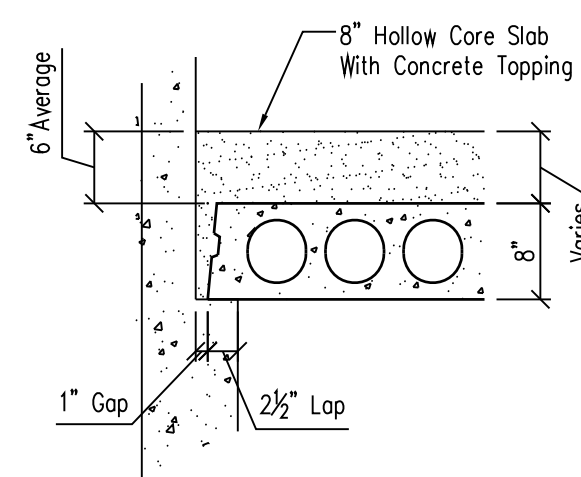


HOLLOW-CORE SLAB ONLY
 $A = 470 \text{ in}^2$ $Wt. = 61.2 \text{ psf}$
 $I = 3525 \text{ in}^4$ $b = 27.75 \text{ in}$
 $Y_1 = 4.04 \text{ in}$ $Y_2 = 3.96 \text{ in}$
 $Z_1 = 873 \text{ in}^3$ $Z_2 = 890 \text{ in}^3$
 Volume of grout = 127 in per L.F. of joint
 Wt. of grouted slab in place = 62.6 psf
 $f_c \text{ slab} = 5500 \text{ psi}$ $f_c \text{ grout} = 3500 \text{ psi}$

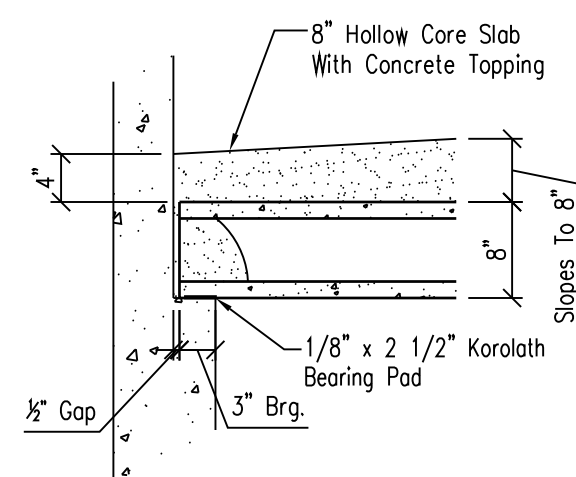
HOLLOW-CORE SLAB W/ 2" TOPPING
 $I = 6620 \text{ in}^4$ $Y_1 = 5.24 \text{ in}$
 $Y_2 = 4.76 \text{ in}$ $Z_1 = 1392 \text{ in}^3$ $Z_2 = 1262 \text{ in}^3$
 Z @ bottom of topping = 2402 in^3
 Wt. of topped slab in place = 87.6 psf
 $f_c \text{ topping} = 3500 \text{ psi}$



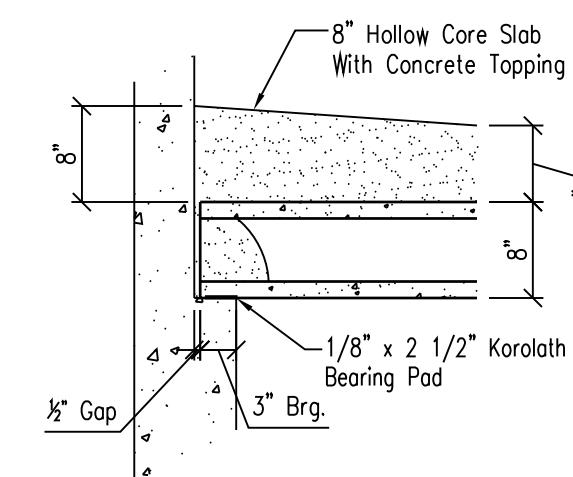
Typ. Slab Joint
3/4" = 1'-0"



Typ. Lap @ Conc. Wall
3/4" = 1'-0"



Typ. Brg. @ Front Conc. Wall
3/4" = 1'-0"



Typ. Brg. @ Back Conc. Wall
3/4" = 1'-0"

GENERAL NOTES:

SPECIAL MATERIAL REQUIREMENTS:
 Prestressing strands are Grade 270-Low-Lax. A 1/8"x2 1/2" continuous bearing pad shall be provided, by Stress-Cast, where slabs bear on concrete or masonry. Stress-Cast is not responsible for adequacy of the support structure nor for deviation from support structure conditions as shown by the contract drawings.
 The specific tentative date for the delivery and the erection of the product is desired TEN DAYS in advance, and reconfirmation is expected FOUR DAYS in advance. These advance notices are essential in efficiently scheduling delivery of equipment.
 The general contractor's approval of these shop drawings indicates that all as-built building conditions at the time of erection will be in accordance with the approved shop drawings and within recognized industry tolerances. Approval indicates that the general contractor has completely checked all design building dimensions such as slab locations, slab sizes and shapes and that all requirements by other trades such as mechanical, heating, ventilating, and electrical have been properly interpreted.

CONTRACT NOTES:

Prestressed Hollow-Core slabs with lifting loops only are furnished F.O.B. jobsite by Stress-Cast. No loose erection hardware will be provided nor is any field work included.
 Holes 8" in diameter or less shall be field cut by the trades requiring them after location is approved by architect/engineer.
 If suitable roadways and approaches are not provided and maintained by the purchaser...Stress-Cast reserves the right to stop delivery until the condition is remedied.
 Unloading shall be by the Buyer at his expense. Buyer will be allowed one hour free time per truck for unloading, and shall be charged for unloading time in excess of one hour.

SPECIAL NOTE:

The general contractor and/or any other trades shall provide holes or other means to allow the hollow cells to drain any water accumulation that may occur during the process of construction.

ERECTION NOTES:

The erector shall notify Stress-Cast of shipping damage upon delivery. Lack of notification at unloading shall indicate acceptance of an undamaged slab by the erector.
 Hollow-Core slabs shall be leveled by jacking or loading as recommended by Stress-Cast prior to grouting.
 Slabs shall be erected from center to center of edge joints. All joint gaps are 1/8" wide unless otherwise noted.
 Slabs are delivered with integrated lifting loops located at 20-25% of the slab span length from each bearing end.
 Chokers used for lifting must be equal to or longer than 60% of slab span length unless the erector opts to use a spreader beam. The angle between slab and choker shall, under no circumstances, be less than 60 degrees.

STRESS-CAST, INC. (785)667-3905
 ASSARIA, KS. 67416

PROJECT NO.
2307-R
 DATE:
10/13/23
 DRAWN BY:
M.J.M.
 SUBMITTAL
1

Customer: SAB Homes
 Project: Garage Floor
 Location: 2210 Hook Farm Dr.
 Lee's Summit, MO

REVISIONS	DATE	DESCRIPTION	REVISION PER

E1