

**NEW MILLENNIUM JOIST ERECTION NOTES**  
REFER TO THE STEEL JOIST INSTITUTE'S (SJI) SPECIFICATIONS AND ITS TECHNICAL DIGEST (TD) 9

**GC / ERECTOR NOTE:**

DO NOT ERECT STEEL JOISTS WITHOUT OBTAINING A COPY AND THOROUGHLY READING THE SJI TO 9. HANDLING AND ERECTION OF STEEL JOISTS AND JOIST GIRDERS - SERIOUS INJURY OR DEATH CAN RESULT FROM FAILURE TO FAMILIARIZE AND COMPLY WITH ALL APPLICABLE SAFETY REQUIREMENTS OF FEDERAL, STATE, AND LOCAL REGULATIONS AND THE SAFETY GUIDELINES OUTLINED IN THE SJI TO 9. THIS MANUAL IS INTENDED TO BE AN AID AND GENERAL GUIDE FOR THE SAFE AND PROPER ERECTION OF STEEL JOIST PRODUCTS.

SJI TO 9 IS AVAILABLE FROM:

STEEL JOIST INSTITUTE  
140 W EVANS ST. SUITE 203  
FLORENCE, SC 29501

PHONE: 843-407-4091  
WEB: STEELJOIST.ORG

**JOIST DELIVERY AND UNLOADING:**

1. VERIFY QUANTITIES AND CONDITION OF JOISTS AND JOIST ACCESSORIES UPON ARRIVAL. INFORM NEW MILLENNIUM IMMEDIATELY OF ANY SHORTAGES, DISCREPANCIES OR DAMAGE.

2. NEW MILLENNIUM WILL SUPPLY ONLY THE MATERIAL LISTED ON THE BILL OF LADING.

3. WHEN UNLOADING JOISTS BY CRANE, ALWAYS HOIST JOISTS BY TOP OR BOTTOM CHORD PANEL POINTS (NOT BY WEB MEMBERS).

4. IF NOT ERECTED IMMEDIATELY, STORE JOISTS AND JOIST ACCESSORIES OFF THE GROUND AND KEEP THEM COVERED TO PROTECT THE PRIMER COATING.

**JOIST INSTALLATION:**

5. FOLLOW ALL APPLICABLE REGULATIONS OF THE OCCUPATIONAL SAFETY AND HEALTH ADMINISTRATION (OSHA) FEDERAL REGISTER SUBPART R 1926. IMMEDIATELY AFTER JOIST IS SET, ATTACH JOIST TO SUPPORTS AS REQUIRED BY SJI AND OSHA. AS BRIDGING IS INSTALLED, REMOVE SWEEP IN THE JOIST AND CORRECT ANY VERTICAL MISALIGNMENT. ONCE THE BRIDGING IS INSTALLED, ATTACH JOISTS TO SUPPORTS PER FINAL ERECTION DRAWINGS.

6. ONLY DRAWINGS HAVING A "FIELD USE" STAMP SHALL BE USED FOR ERECTION.

7. REFER TO THE ERECTION SECTIONS FOR JOIST AND JOIST GIRDER END ANCHORAGE REQUIREMENTS. PER NEW MILLENNIUM, JOISTS, JOIST GIRDERS, AND ACCESSORIES SHALL BE ATTACHED WITH A MINIMUM OF:

K-SERIES JOISTS - THE EQUIVALENT OF TWO 1/8" FILLET WELDS (W) 2 1/2" LONG (L), AND BOLTED WITH TWO 1/2" A307 BOLTS WHERE SLOTS ARE INDICATED IN SECTION.

LH-SERIES JOISTS, SECTION NUMBERS 02 THRU 06 - THE EQUIVALENT OF TWO 3/16" FILLET WELDS (W) 2 1/2" LONG (L), AND BOLTED WITH TWO 3/4" A307 BOLTS WHERE SLOTS ARE INDICATED IN SECTION.

LH-SERIES AND DLH-SERIES JOISTS, SECTION NUMBERS 07 THRU 17 - THE EQUIVALENT OF TWO 1/4" FILLET WELDS (W) 2 1/2" LONG (L), AND BOLTED WITH TWO 3/4" A307 BOLTS WHERE SLOTS ARE INDICATED IN SECTION.

DLH-SERIES JOISTS, SECTION NUMBERS 18 THRU 25 - THE EQUIVALENT OF TWO 1/4" FILLET WELDS (W) 4" LONG (L), AND BOLTED WITH TWO 3/4" A325 BOLTS WHERE SLOTS ARE INDICATED IN SECTION.

JOIST GIRDERS - THE EQUIVALENT OF TWO 1/4" FILLET WELDS (W) 2 1/2" LONG (L), AND BOLTED WITH TWO 3/4" A325 BOLTS WHERE SLOTS ARE INDICATED IN SECTION.

BRIDGING - THE EQUIVALENT OF A 1/8" FILLET WELD (W) 1" LONG (L), WITH THE EXCEPTION OF BOLTING, FOR K-SERIES JOISTS.

THE EQUIVALENT OF A 1/8" FILLET WELD (W) 1" LONG (L), WITH THE EXCEPTION OF BOLTING, FOR LH-SERIES AND DLH-SERIES JOISTS, SECTION NUMBERS 02 THRU 15.

THE EQUIVALENT OF A 1/8" FILLET WELD (W) 1 1/2" LONG (L), WITH THE EXCEPTION OF BOLTING, FOR DLH-SERIES JOISTS, SECTION NUMBERS 16 THRU 20.

THE EQUIVALENT OF A 1/8" FILLET WELD (W) 2" LONG (L), WITH THE EXCEPTION OF BOLTING, FOR DLH-SERIES JOISTS, SECTION NUMBERS 21 AND 22.

THE EQUIVALENT OF A 1/8" FILLET WELD (W) 3" LONG (L), WITH THE EXCEPTION OF BOLTING, FOR DLH-SERIES JOISTS, SECTION NUMBERS 23 THRU 25.

BOTTOM CHORD BRACES - THE EQUIVALENT OF A \* FILLET WELD (W) \*\* LONG (L).

\* = SAME AS BRACE ANGLE THICKNESS. \*\* = SAME AS BRACE ANGLE LEG LENGTH.

KEY:

8. ALL STEEL BEARING JOISTS IN BAYS 40'-0" AND MORE, ARE TO BE BOLTED TO SUPPORTS PER OSHA, UNLESS JOISTS ARE PRE-ASSEMBLED INTO PANELS.

9. ACCORDING TO SJI, BEARING PLATES SHALL BE LOCATED NO MORE THAN 1/2" FROM THE FACE OF MASONRY OR CONCRETE SUPPORTS. REFERENCE SJI SPECIFICATIONS FOR MINIMUM BEARING PLATE WIDTHS.

10. UNBRIDGED JOISTS MAY EXHIBIT SOME DEGREE OF INSTABILITY UNDER THE ERECTOR'S WEIGHT, THEREFORE, EXTREME CAUTION MUST BE EXERCISED. WHEN IT IS NECESSARY FOR THE ERECTOR TO CLIMB ON THE JOIST, REFER TO SJI AND OSHA REQUIREMENTS.

11. VERIFY THAT ALL BRIDGING IS COMPLETELY INSTALLED, WITH JOIST AND JOIST GIRDER ENDS PERMANENTLY ATTACHED, BEFORE APPLYING CONSTRUCTION LOADS TO JOIST.

12. ADEQUATE MEANS FOR DISTRIBUTING CONCENTRATED LOADS SHOULD BE PROVIDED SO THAT THE CAPACITY OF ANY JOIST IS NOT EXCEEDED.

13. JOIST CHORDS ARE NOT DESIGNED FOR BENDING DUE TO CONCENTRATED LOADS, UNO ON PLANS. EITHER PLACE LOADS AT JOIST PANEL POINTS OR SEE THE "FIELD INSTALLED WEB MEMBERS AT CONCENTRATED LOADS" DETAIL.

**NEW MILLENNIUM GENERAL JOIST NOTES:**

14. NINC - NOT IN NEW MILLENNIUM CONTRACT. UNO - UNLESS NOTED OTHERWISE.

15. TYPICAL PRIMER COATING, UNO ON PLANS:

GRAY PRIMER FOR ALL JOISTS, JOIST GIRDERS & JOIST ACCESSORIES.

SHOP PRIMER COMPLIES WITH SSPC-PAINT 15.

NOTE: SHOP PRIMER IS APPLIED BY DIPPING. COATING MAY NOT BE UNIFORM AND REQUIRE REMOVAL OF ACCUMULATIONS BEFORE FINISH COAT IS APPLIED.

16. WELDED HORIZONTAL BRIDGING IS SUPPLIED IN 20'-0" LENGTHS. FIELD CUT WELDED HORIZONTAL BRIDGING AS REQUIRED AND UTILIZE ALL DROP.

NOTE: WELDED BRIDGING IS TO BE EQUALLY SPACED BETWEEN SUPPORTS, UNO ON PLANS. DECK MUST BE POSITIVELY ATTACHED TO JOIST TOP CHORDS IN ACCORDANCE WITH DECK FASTENING REQUIREMENTS, TO PROVIDE LATERAL STABILITY, UNO ON PLANS.

17. JOISTS MARKED TJ\_ INDICATES TIE-JOISTS. THESE JOISTS ARE NOT DESIGNED TO SATISFY OSHA 29 CFR 1926.757 (a)(3). REFER TO "DANGER" TAG ON JOIST FOR ERECTION REQUIREMENTS.

18. DO NOT CUT AWAY ANY CHORDS OR WEBS.

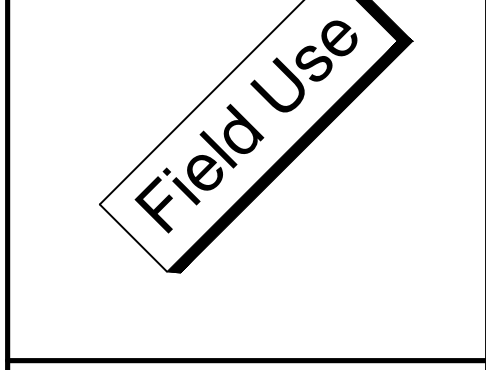
19. NEW MILLENNIUM PRODUCTS ARE FABRICATED TO MEET THE ERECTION REQUIREMENTS OF OSHA. FIELD COMPLIANCE WITH OSHA IS NECESSARY.

20. FIELD BOLTS PROVIDED BY NEW MILLENNIUM FOR BOLTING NEW MILLENNIUM PRODUCTS TO NEW MILLENNIUM PRODUCTS ONLY.

**CONTRACT NOTE:**

NEW MILLENNIUM WILL NOT ACCEPT THE RESPONSIBILITY OR CHARGES FOR ANY FIELD CORRECTIONS MADE WITHOUT PRIOR NEW MILLENNIUM APPROVAL.

5/13/2024	APPROVAL	5/13/2024
6/11/24	FIELD USE	6/11/24
6/18/24	REVISED FIELD USE	6/18/24
6/24/2024	REVISED FIELD USE	6/24/2024



**NEW MILLENNIUM**  
A Steel Dynamics Company

NEW Millennium  
3565 Highway 32 North  
Hope, Arkansas 71801 | www.newmill.com  
Phone: (870) 722-4100 | Fax: (870) 722-4245

LEE'S SUMMIT MARKET PLAZA	LEE'S SUMMIT, MO	DONNER STEEL WORKS	MBW
LOCATION	CUSTOMER	CUSTOMER P.O. NUMBER	CHKR
			DTLR
			MKR

JOB NAME: LEE'S SUMMIT MARKET PLAZA

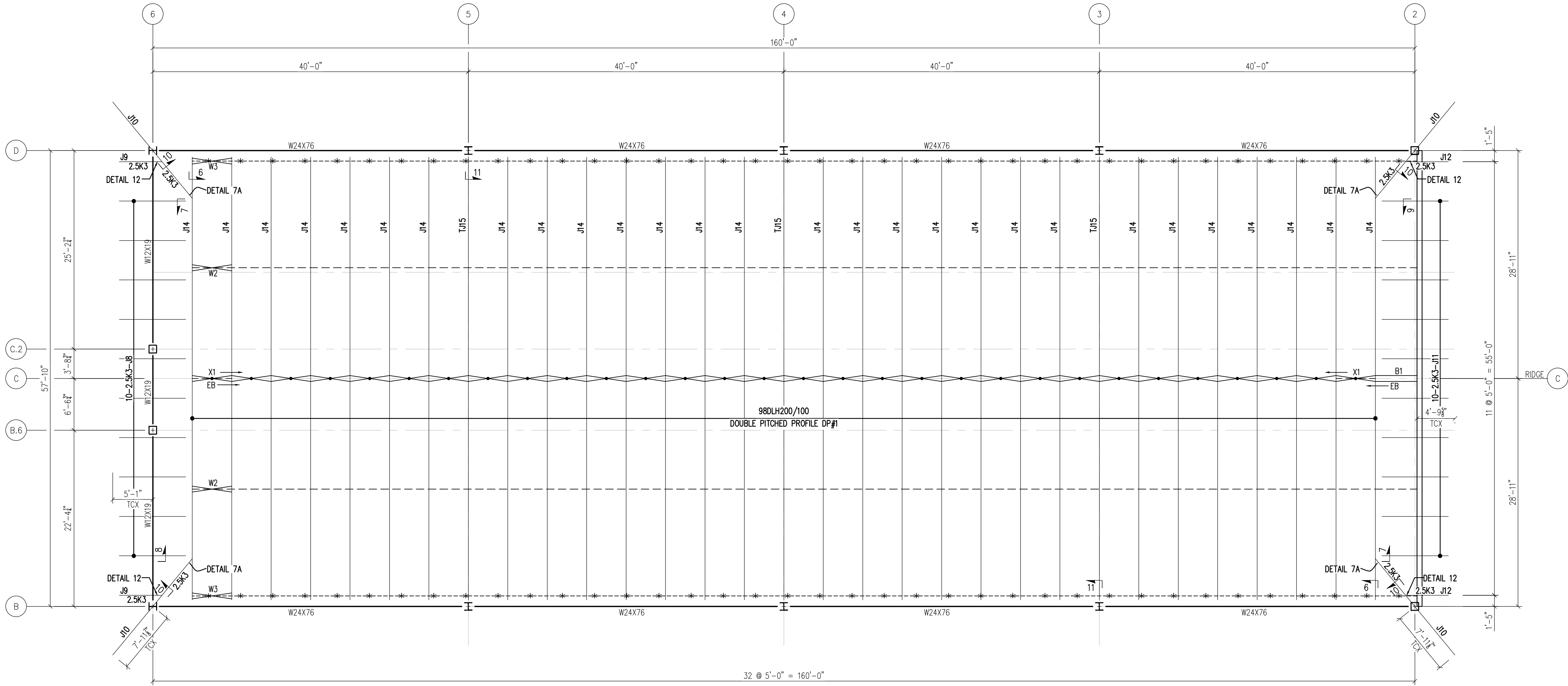
JOB NO. 2123-0295

DRAWING NO. J1.1

FIELD USE







FIELD  
USE

ROOF JOIST ERECTION PLAN

HIGH ROOF REF: S-121  
SCALE: 1/8" = 1'-0" PLAN NORTH

- PLAN NOTES:
- SEE DRAWING J1.X FOR ERECTION NOTES, SECTIONS AND DETAILS.
  - SEE DRAWING D2.X FOR DECK ERECTION PLAN.
  - ALL JOISTS WILL BE FABRICATED WITH STANDARD SJJ CAMBER.
  - ALL JOISTS ARE TO BE DESIGNED FOR 10 PSF NET UPLIFT.
  - ORIENT TAGGED END OF JOISTS AT MARKED END ON PLAN.
  - INDICATES WELDED HORIZONTAL BRIDGING @ TOP & BOTTOM CHORD.  
HOT-ROLLED ANGLE 1.50x1.50x.109 MK: H2
  - INDICATES WELDED HORIZONTAL UPLIFT BRIDGING @ BOTTOM CHORD.  
HOT-ROLLED ANGLE 1.50x1.50x.109 MK: H2
  - INDICATES BOLTED DIAGONAL BRIDGING.
  - INDICATES BOLTED HORIZONTAL BRIDGING.

JOB NAME  
LEE'S SUMMIT MARKET PLAZA

LOCATION  
LEE'S SUMMIT, MO

CUSTOMER  
DONNER STEEL WORKS

CUSTOMER P.O. NUMBER  
2123-0295

JOB NO.

2123-0295

DRAWING NO.

J2.1

CHKR  
MKR  
MBW

NEW MILLENNIUM  
A Steel Dynamics Company

New Millennium  
3565 Highway 32 North  
Hope, Arkansas 71801 | www.newmill.com  
Phone: (870) 722-4100 | Fax: (870) 722-4245



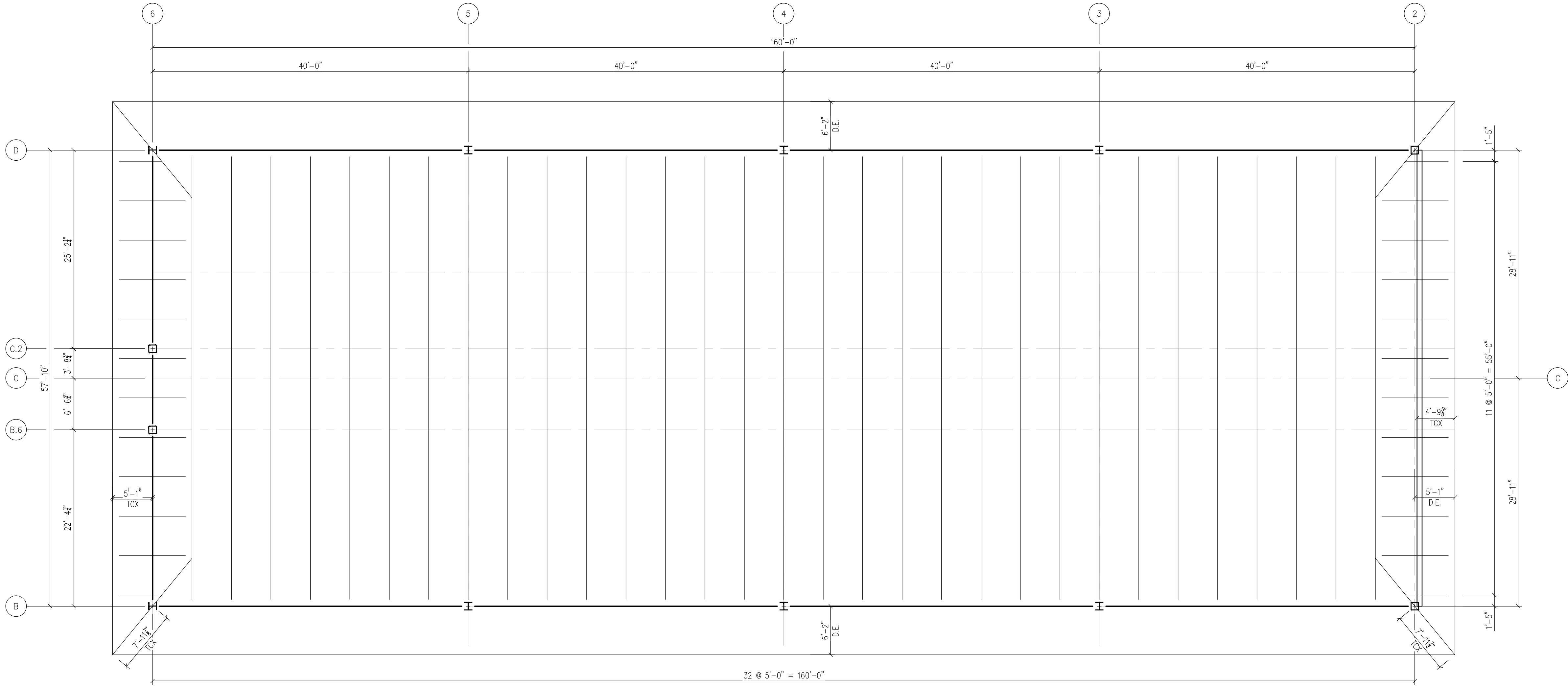
Field Use

ELECTRONIC SUBMITTAL	APPROVAL	5/13/2024	MKR
ELECTRONIC SUBMITTAL	FIELD USE	6/11/24	MKR
ELECTRONIC SUBMITTAL	REVISED FIELD USE	6/18/24	MKR






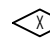




FIELD  
USE

ROOF DECK ERECTION PLAN  
HIGH ROOF REF. S-121  
SCALE: 1/8" = 1'-0" NORTH

PLAN NOTES:  
1. SEE DRAWING D1.0 FOR ERECTION NOTES, SECTIONS AND DETAILS.  
2. FIELD CUT DECK AS REQUIRED. - USE ALL DROP.

3.  INDICATES DECK ERECTION START POINT.  
4.  INDICATES DECK BUNDLE NUMBER.  
5. D.E. = DECK EDGE.  
6. EOS= EDGE OF STEEL

JOB NAME  
LEE'S SUMMIT MARKET PLAZA

LOCATION  
LEE'S SUMMIT, MO

CUSTOMER  
DONNER STEEL WORKS

CUSTOMER P.O. NUMBER

DTLR

MKR

CHKR

MBW

JOB NO.

2123-0295

DRAWING NO.

D2.2



NEW MILLENNIUM  
A Steel Dynamics Company

New Millennium  
3565 Highway 32 North  
Hope, Arkansas 71801 | www.newmill.com  
Phone: (870) 722-4100 | Fax: (870) 722-4245



Field Use

ELECTRONIC SUBMITTAL

APPROVAL

FIELD USE

5/13/2024 MKR

6/11/24 MKR