

RECORD DRAWING

The information provided on this drawing conforms to construction records; it is not intended for construction, implementation or recording purposes; and is solely based on information provided by others.

"100.00 100.10", "1.00% 1.15% slope", "8-inch HDPE PVC pipe" or text that is blue in color are all typical examples of revisions that indicate that design data has been replaced with "as-built" information. All other data is as designed and has not been field verified.

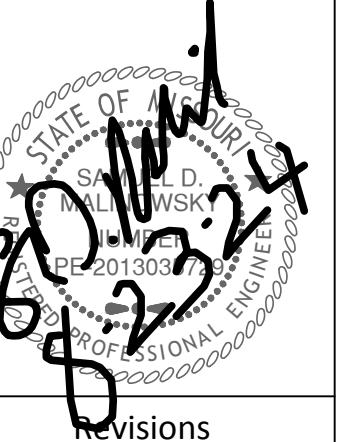
Date: 8-23-24

Certified by: Samuel D. Malinowsky

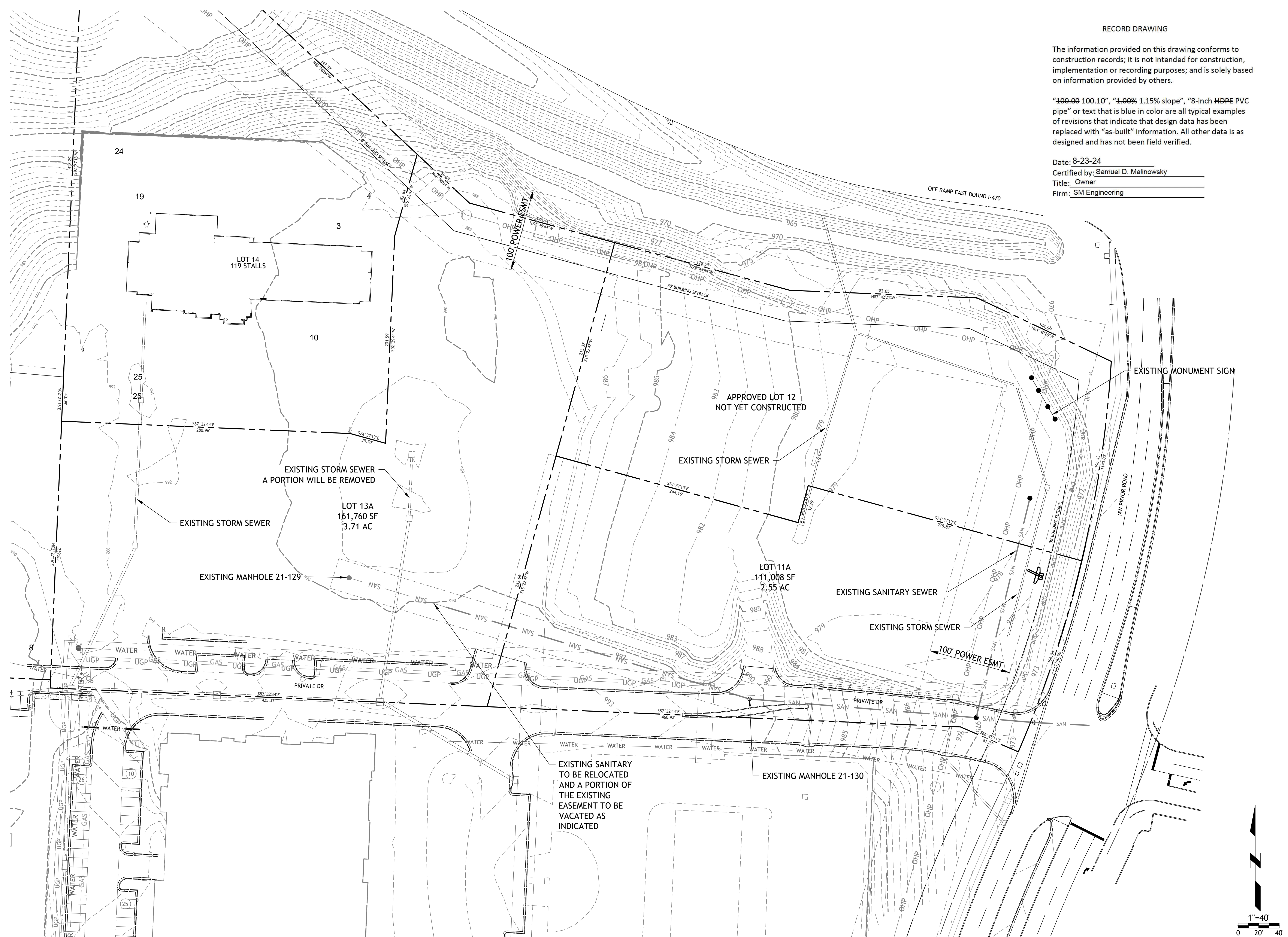
Title: Owner

Firm: SM Engineering

Drawings and/or Specifications are original proprietary work and property of the Engineer and intended specifically for this project. Use of items contained herein without consent of the Engineer is prohibited. Drawings illustrate best information available to the Engineer. Field verification of actual elements, conditions, and dimensions is required.



Revisions



LOT 13A OF
WEST PRYOR
LEES SUMMIT, MISSOURI

sheet

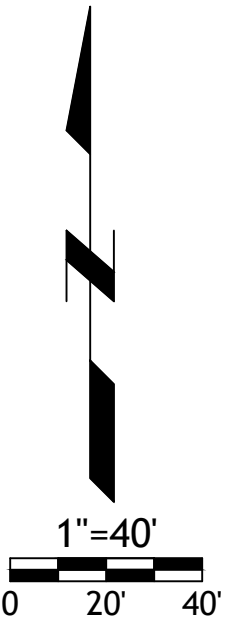
C2.0

Civil

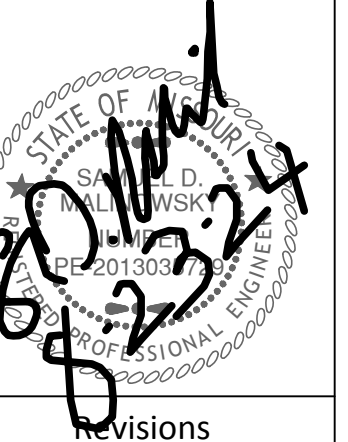
EXISTING CONDITIONS

permit

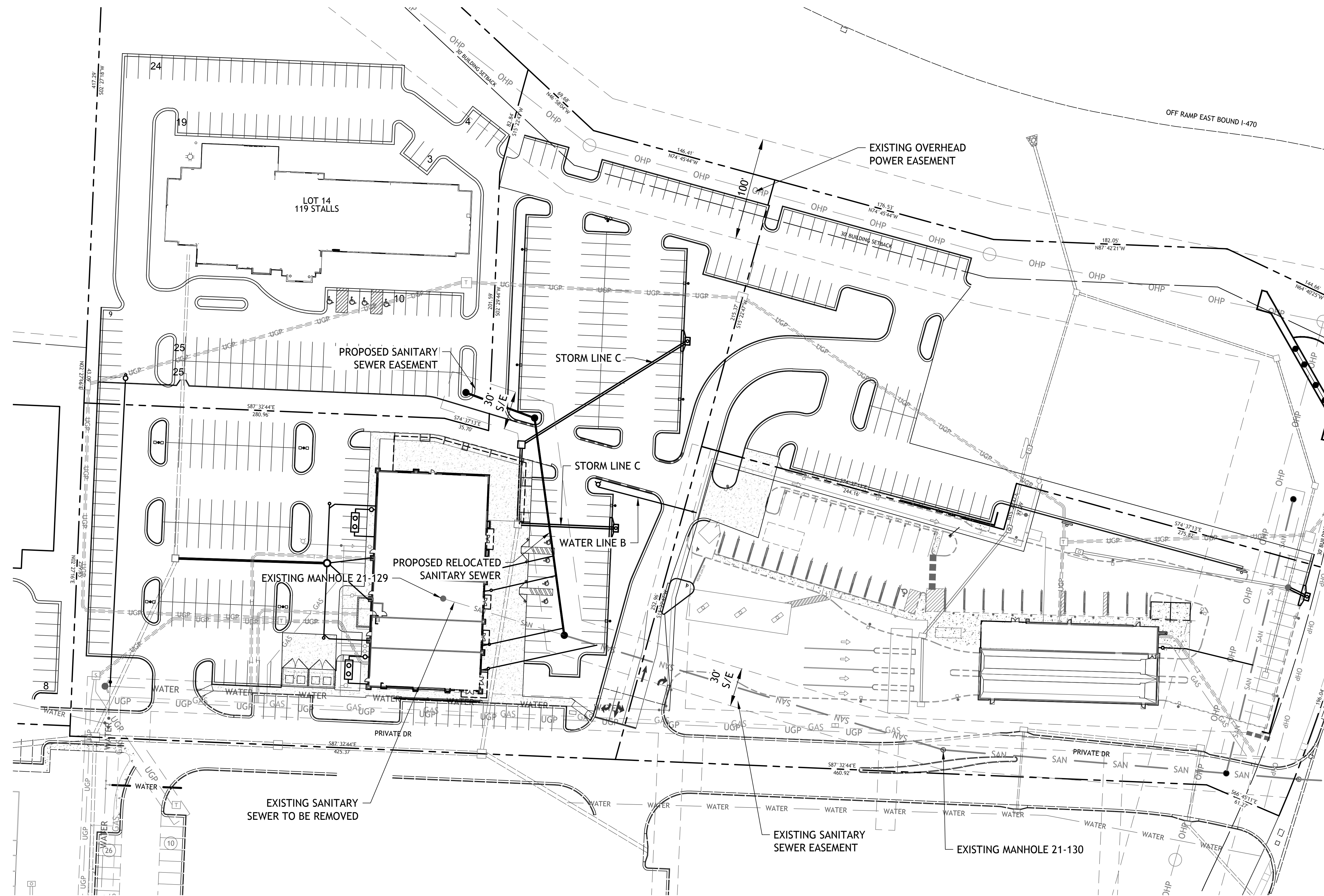
19 OCTOBER 2023



Drawings and/or Specifications are original proprietary work and property of the Engineer and intended specifically for this project. Use of items contained herein without consent of the Engineer is prohibited. Drawings illustrate best information available to the Engineer. Field verification of actual elements, conditions, and dimensions is required.



Revisions



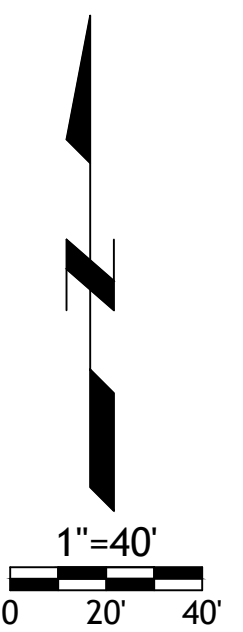
NOTE
EROSION CONTROL MEASURES
ARE INCLUDED IN LOT 13 FINAL
DEVELOPMENT PLANS

RECORD DRAWING

The information provided on this drawing conforms to construction records; it is not intended for construction, implementation or recording purposes; and is solely based on information provided by others.

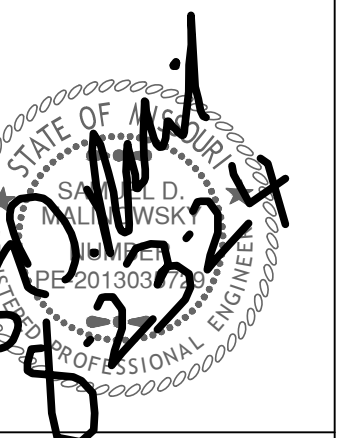
"100.00 100.10", "1.00% 1.15% slope", "8-inch HDPE PVC pipe" or text that is blue in color are all typical examples of revisions that indicate that design data has been replaced with "as-built" information. All other data is as designed and has not been field verified.

Date: 8-23-24
Certified by: Samuel D. Malinowsky
Title: Owner
Firm: SM Engineering

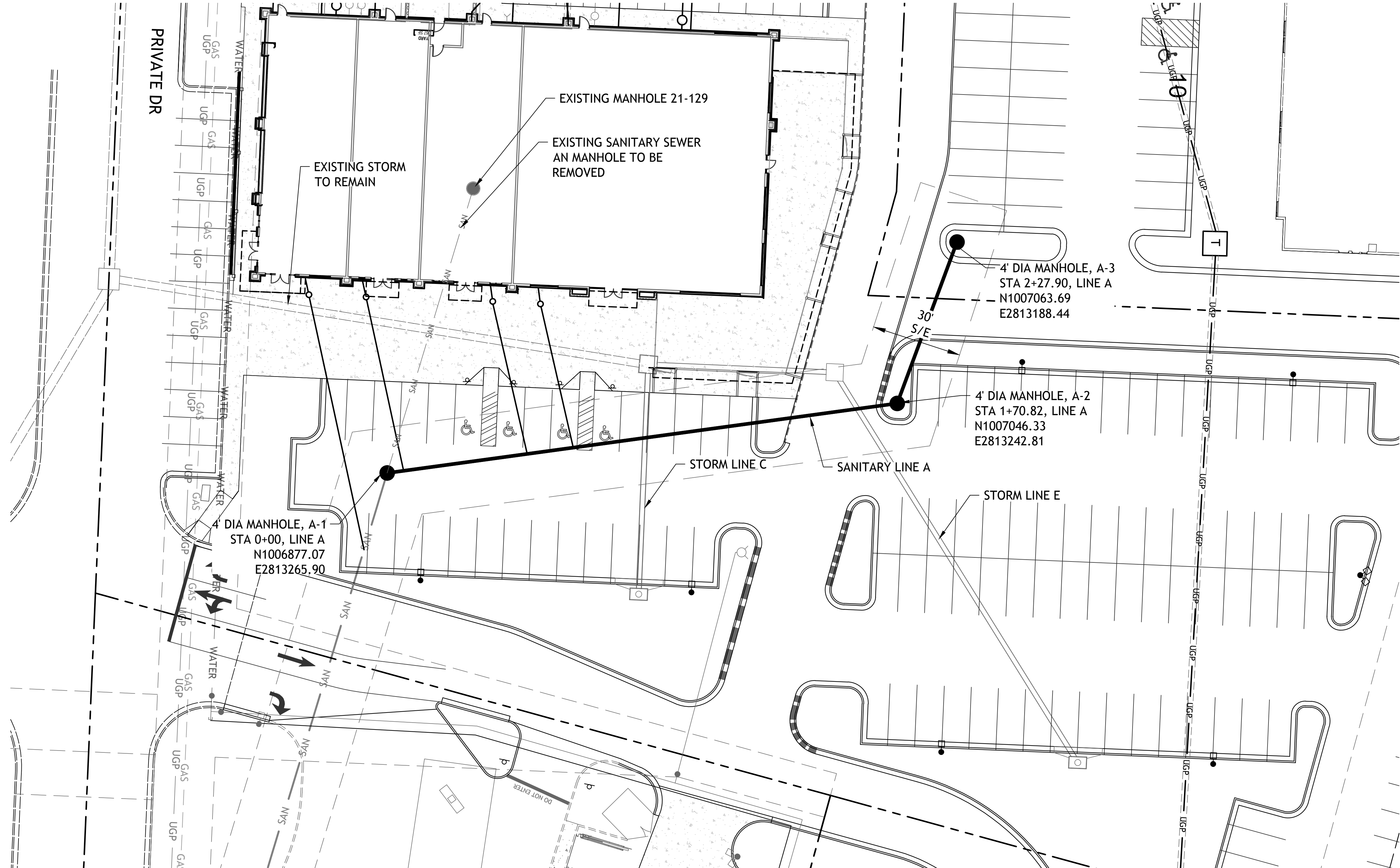


LOT 13A OF
WEST PRYOR
LEES SUMMIT, MISSOURI

Drawings and/or Specifications are original proprietary work and property of the Engineer and intended specifically for this project. Use of items contained herein without consent of the Engineer is prohibited. Drawings illustrate best information available to the Engineer. Field verification of actual elements, conditions, and dimensions is required.



Revisions

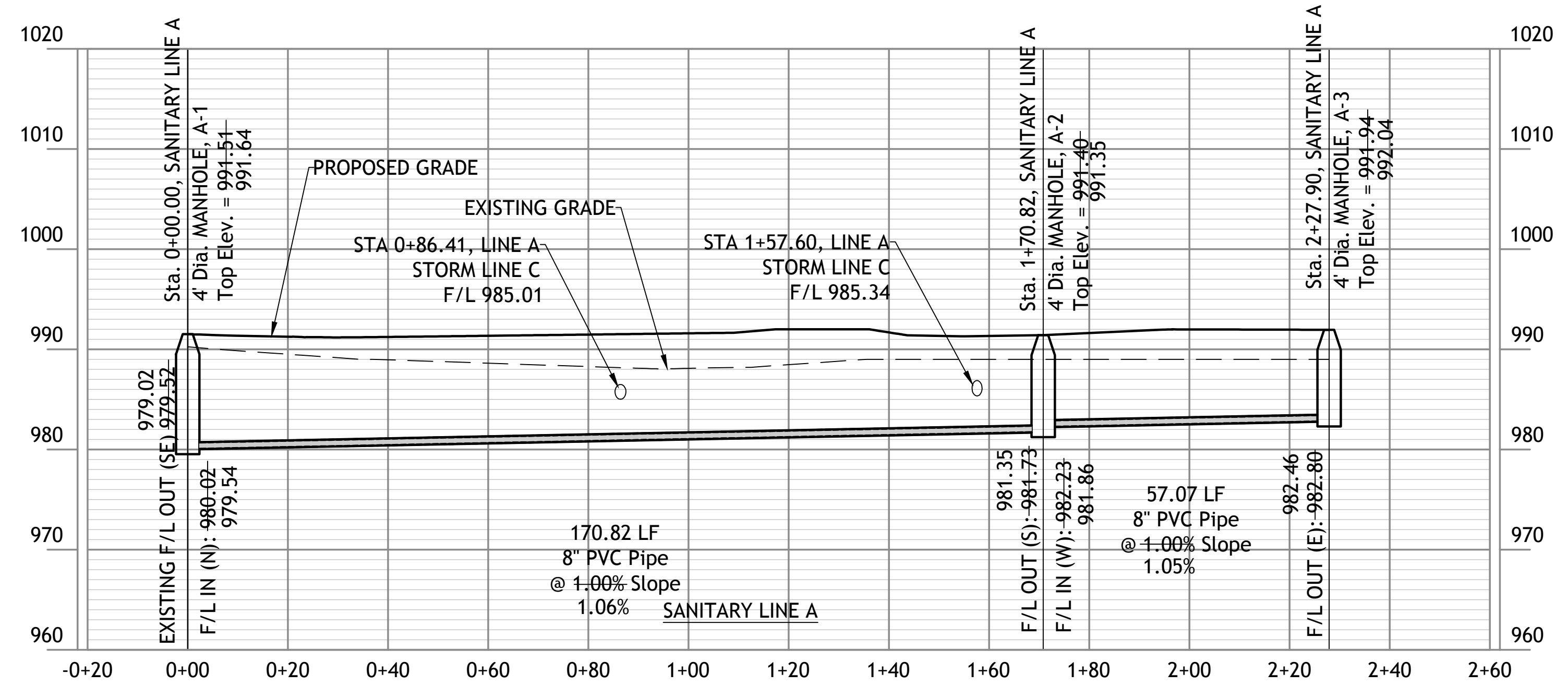
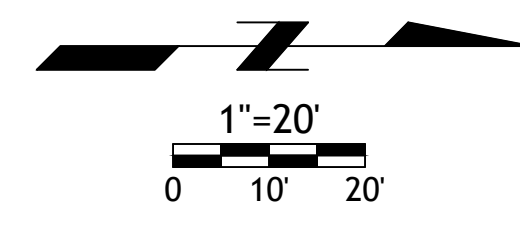


RECORD DRAWING

The information provided on this drawing conforms to construction records; it is not intended for construction, implementation or recording purposes; and is solely based on information provided by others.

"100.00 100.10", "1.00% 1.15% slope", "8-inch HDPE PVC pipe" or text that is blue in color are all typical examples of revisions that indicate that design data has been replaced with "as-built" information. All other data is as designed and has not been field verified.

Date: 8-23-24
Certified by: Samuel D. Malinowsky
Title: Owner
Firm: SM Engineering



NOTE
FLOWABLE FILL BACKFILL IS REQUIRED AROUND ALL STRUCTURES

LOT 13A OF
WEST PRYOR
LEES SUMMIT, MISSOURI

Drawings and/or Specifications are original proprietary work and property of the Engineer and intended specifically for this project. Use of items contained herein without consent of the Engineer is prohibited. Drawings illustrate best information available to the Engineer. Field verification of actual elements, conditions, and dimensions is required.

Revisions

1-1/2" LETTERS EQUALLY SPACED

3" LETTERS EQUALLY PLACED

24"

1'-9 3/8"

1 1/2"

STANDARD 24" MANHOLE COVER
MINIMUM WEIGHT = 160 LB
NOTE: PICK HOLES NOT SHOWN

*COVER AND FRAME MODEL INFORMATION REFER TO THE STORMWATER APPROVED PRODUCT LIST.

	LEE'S SUMMIT MISSOURI	Date: 04/17
	PUBLIC WORKS ENGINEERING DIVISION 220 SE GREEN STREET LEE'S SUMMIT, MO 64063	Drawn By: MJF
	STORM MANHOLE COVER DETAIL	Checked By: DL

STM-6

2'-0 5/16"

1'-10 9/16"

2 3/4"

1 1/2"

SLAB MANHOLE FRAME
LEE'S SUMMIT PART NO.: LS103A
MINIMUM WEIGHT = 145 LB

2'-0 5/16"

1'-10 9/16"

1 1/2"

8 5/8"

2'-9 1/2"

STANDARD 24" MANHOLE FRAME
LEE'S SUMMIT PART NO.: LS101A
MINIMUM WEIGHT = 250 LB

*COVER AND FRAME MODEL INFORMATION REFER TO THE STORMWATER APPROVED PRODUCTS LIST.

	LEE'S SUMMIT MISSOURI	Date: 04/17
	PUBLIC WORKS ENGINEERING DIVISION 220 SE GREEN STREET LEE'S SUMMIT, MO 64063	Drawn By: MJF
	STORM MANHOLE FRAME DETAIL	Checked By: DL

STM-7

EXISTING PAVEMENT

2" ASPHALT CAP *SEE NOTE 1

CONCRETE-KCMBB 4K FULL DEPTH *SEE NOTE 1

8" MIN.

t=THICKNESS OF EXISTING PAVEMENT

D= DEPTH OF PATCH
D= t+1" OR 8" WHICHEVER IS GREATER

12" MIN.

12" MIN.

CONCRETE-KCMBB 4K 6" MIN.

SEE D&C MANUAL SECTION 2100 FOR BACKFILL REQUIREMENTS

TRENCHING/PATCHING DETAIL
NOT TO SCALE

NOTE:
1. ASPHALT CAP OR FULL DEPTH CONCRETE SHALL BE DETERMINED BY CITY INSPECTOR.

	LEE'S SUMMIT MISSOURI	Date: 04/17
	PUBLIC WORKS ENGINEERING DIVISION 220 SE GREEN STREET LEE'S SUMMIT, MO 64063	Drawn By: MJF
	TRENCHING/PATCHING ROADWAYS DETAIL	Checked By: DL

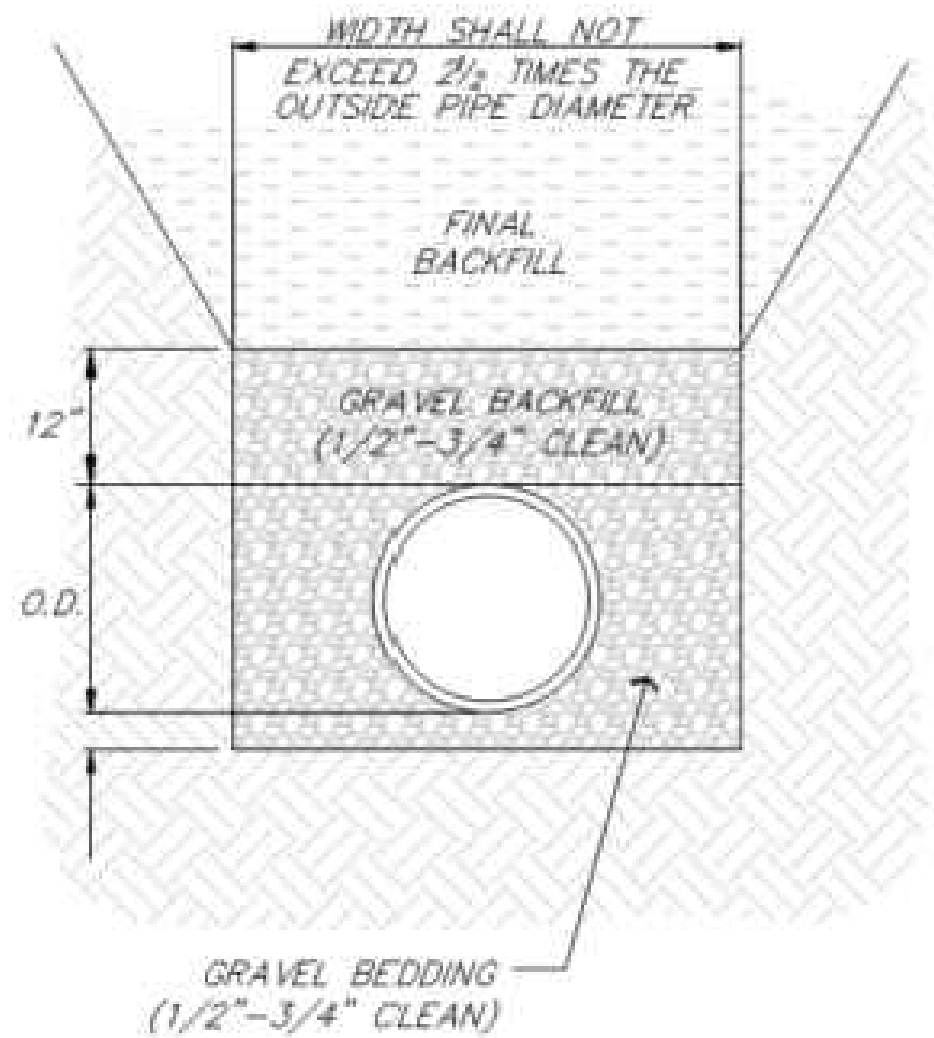
GEN-5

BEDDING
1/2"-3/4" CLEAN AGGREGATE, HAND TAMPED OR MECHANICALLY COMPACTED IN MAX. 4" LIFTS

INITIAL BACKFILL
-UNDER PAVED AREAS OR WITHIN 4" HORIZONTAL OF PAVED AREAS
1/2"-3/4" CLEAN AGGREGATE, HAND TAMPED OR MECHANICALLY COMPACTED IN MAX. 4" LIFTS
-UNDER OPEN AREAS
1/2"-3/4" CLEAN AGGREGATE, HAND TAMPED OR MECHANICALLY COMPACTED IN MAX. 4" LIFTS

FINAL BACKFILL
-UNDER PAVED AREAS OR WITHIN 4" HORIZONTAL OF PAVED AREAS
ON-SITE OR IMPORTED MATERIAL FREE OF MUCK, FROZEN MATERIAL, EXCESS MOISTURE, ORGANICS, TOPSOIL, RUBBISH, CONSTRUCTION DEBRIS, ROCK OR BRICK LARGER THAN 8", COMPACTED TO 95% OF STANDARD DENSITY PER ASTM D-698
-UNDER OPEN AREAS
ON-SITE OR IMPORTED MATERIAL FREE OF MUCK, FROZEN MATERIAL, EXCESS MOISTURE, ORGANICS, TOPSOIL, RUBBISH, CONSTRUCTION DEBRIS, ROCK OR BRICK LARGER THAN 8", COMPACTED TO 90% OF STANDARD DENSITY PER ASTM D-698

BEDDING DEPTH BELOW PIPE		
PIPE DIAMETER	IN SOIL	IN ROCK
24" AND LESS	4"	6"
27" THRU 60"	4"	9"



PIPE BEDDING DETAIL
NOT TO SCALE

RECORD DRAWING

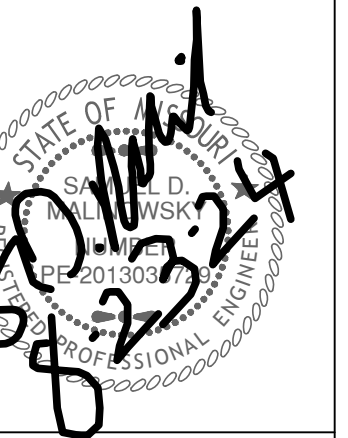
The information provided on this drawing conforms to construction records; it is not intended for construction, implementation or recording purposes; and is solely based on information provided by others.

~~100.00~~ 100.10", ~~1.00%~~ 1.15% slope", "8-inch HDPE PVC pipe" or text that is blue in color are all typical examples of revisions that indicate that design data has been replaced with "as-built" information. All other data is as designed and has not been field verified.

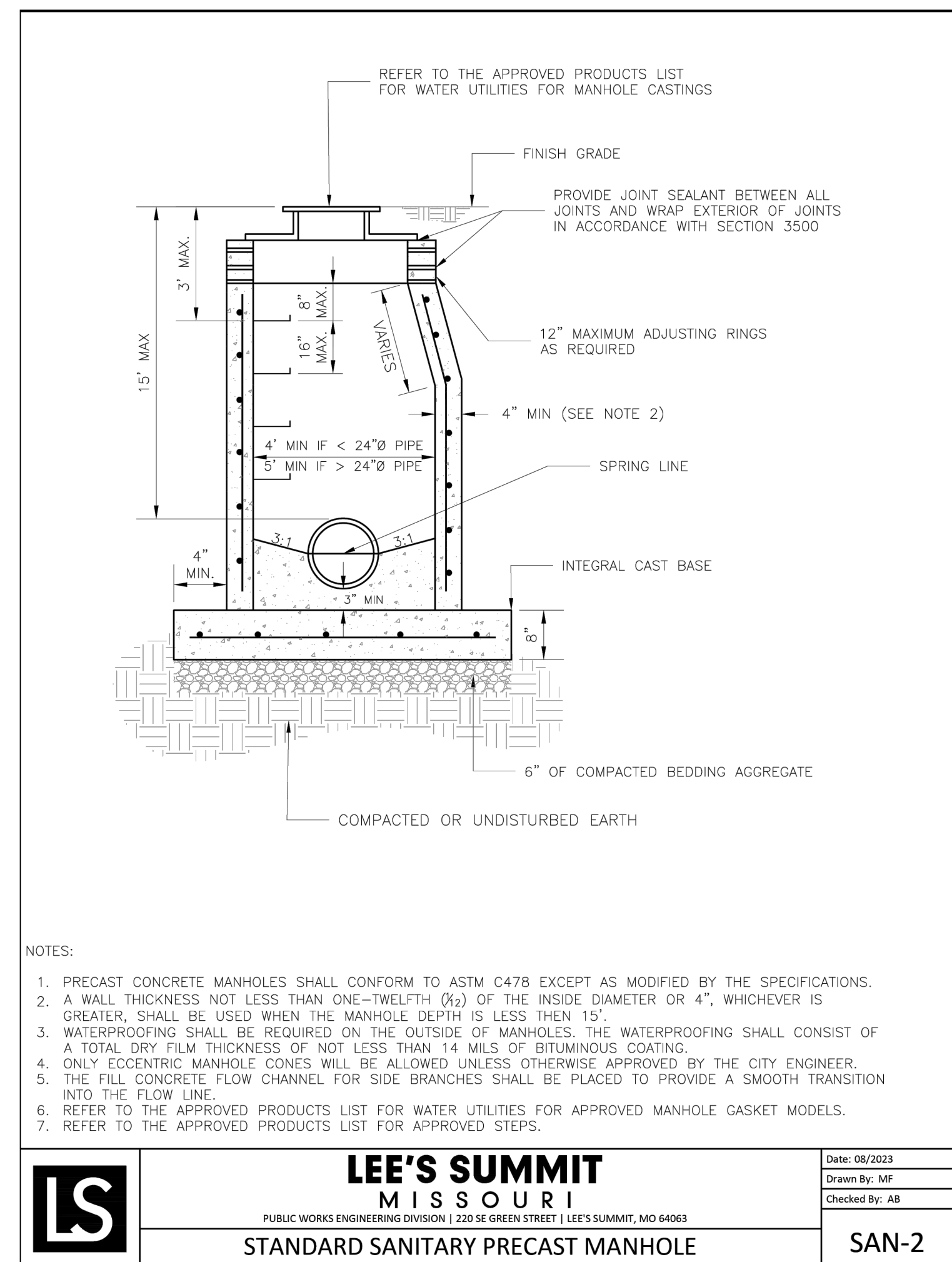
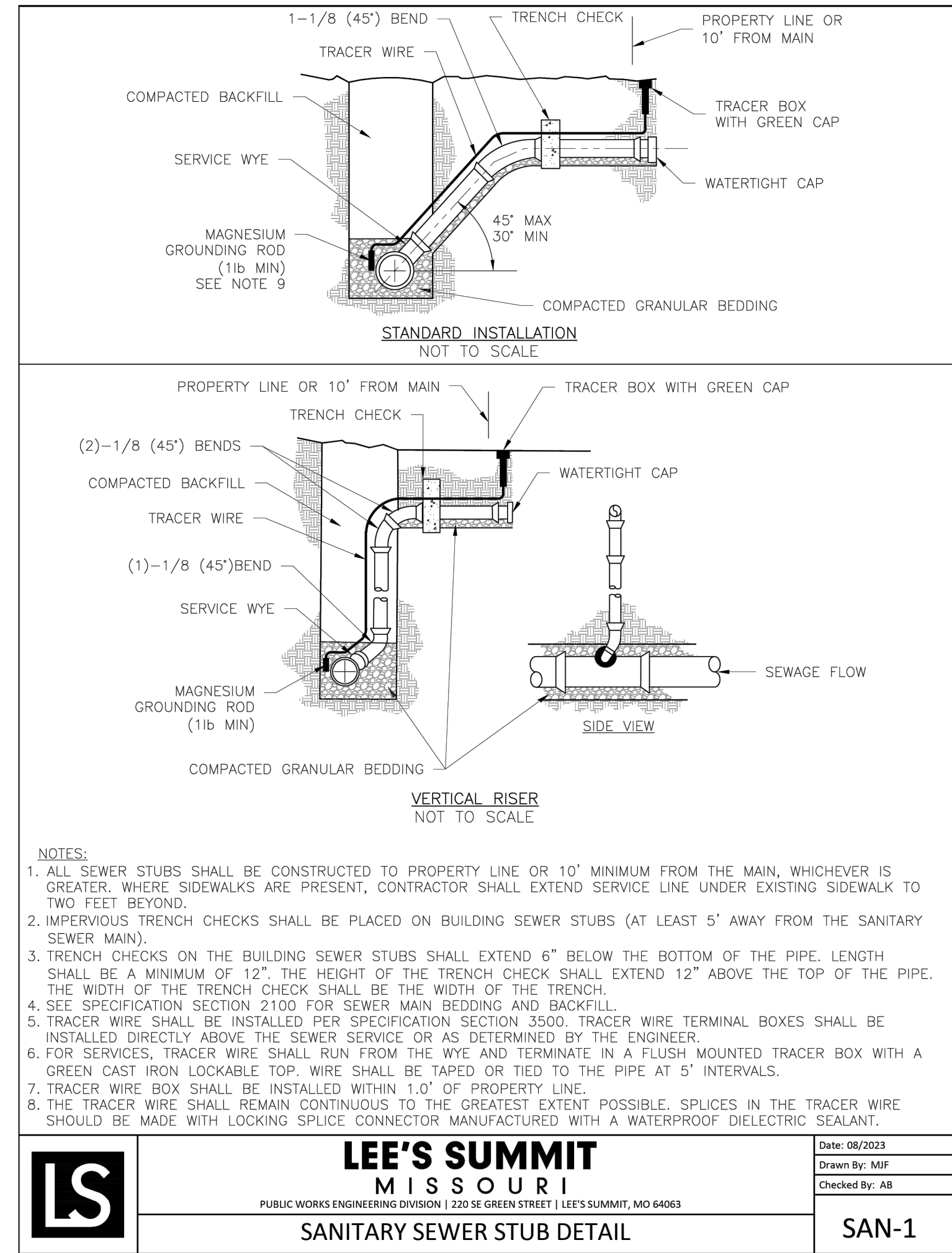
Date: 8-23-24
Certified by: Samuel D. Malinowsky
Title: Owner
Firm: SM Engineering

LOT 13A OF WEST PRYOR
LEE'S SUMMIT, MISSOURI

Drawings and/or Specifications are original proprietary work and property of the Engineer and intended specifically for this project. Use of items contained herein without consent of the Engineer is prohibited. Drawings illustrate best information available to the Engineer. Field verification of actual elements, conditions, and dimensions is required.



Revisions

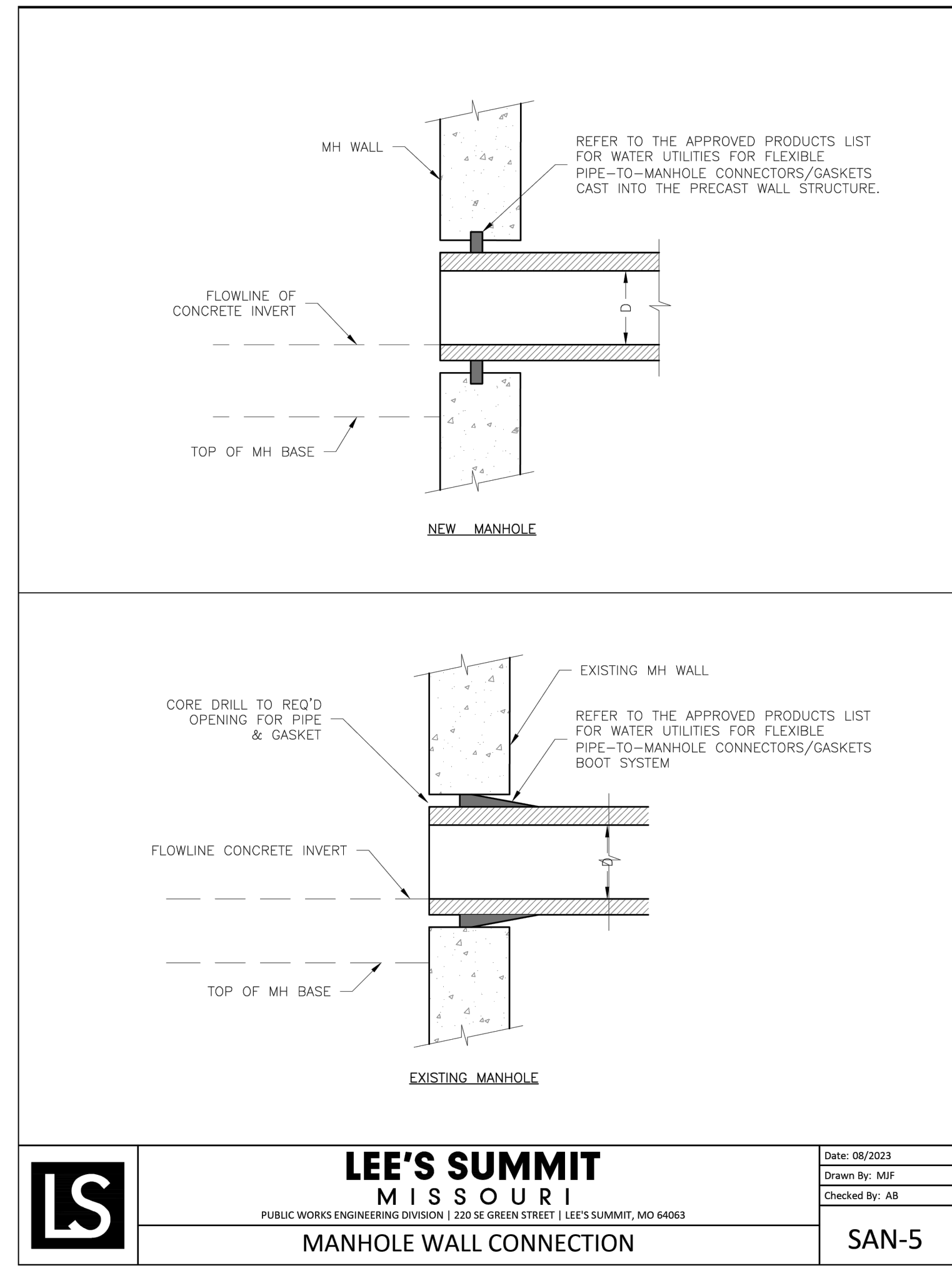


RECORD DRAWING

The information provided on this drawing conforms to construction records; it is not intended for construction, implementation or recording purposes; and is solely based on information provided by others.

"100.00 100.10", "1.00% 1.15% slope", "8-inch HDPE PVC pipe" or text that is blue in color are all typical examples of revisions that indicate that design data has been replaced with "as-built" information. All other data is as designed and has not been field verified.

Date: 8-23-24
 Certified by: Samuel D. Malinowsky
 Title: Owner
 Firm: SM Engineering



LOT 13A OF WEST PRYOR