

HANGER NAILING FOR UNIFORMLY LOADED BEAMS
Joint & Beam Hanger Face Nailing Requirements for 3 & 4 Ply Support Members
 For IUS or THF Hangers - Use 10d (0.145") x 3" nails.
 For U, MU, HU, HHUS, HGUS or HD, THD, THDH Hangers - Use 16d (0.162") x 3 ½" nails.

*For hangers that have joint fasteners/connections, fill all holes with the manufacturer's recommended fasteners.

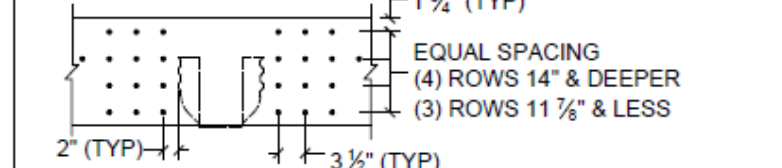
MULTIPLE PLY CONNECTION NAILING FOR UNIFORMLY LOADED BEAMS

2&3 PLY BEAMS	NAILED CONNECTION
9½" - 11¼" Depth	(3) Rows of 10d (0.128") x 3" Box Nails at 12" o.c.
14" - 24" Depth	(4) Rows of 10d (0.128") x 3" Box Nails at 12" o.c.
4 PLY BEAM	NAILED CONNECTION
9½" - 24" Depth	(4) Rows of 10d (0.128") x 3" Box Nails at 12" o.c.

- 16d (0.131") pneumatic nails may be substituted for 10d (0.128") Box nails.
 - Stagger nails by 6" per ply
 - All plies must be same material, grade, and 1½" thickness.
 - Joint Hanger's connecting into the side of the beam must be installed with minimum 3" long nails.

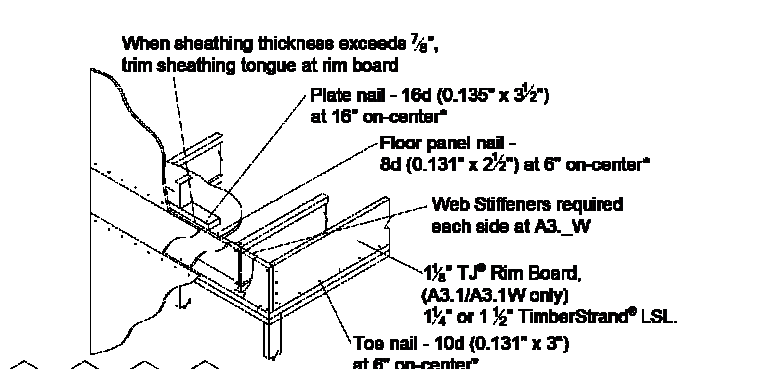
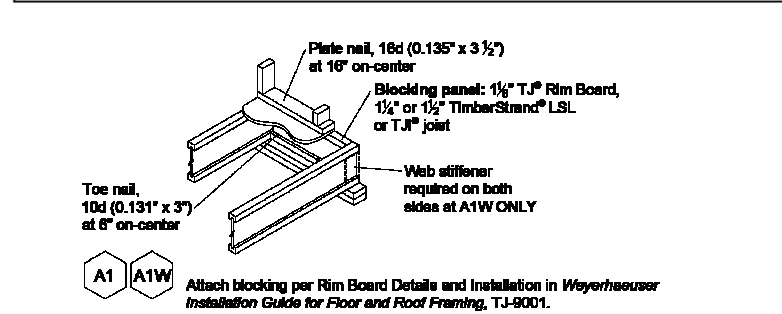
MULTIPLE PLY CONNECTION NAILING FOR POINT LOADS

Hanger shown for reference. Install screws from side opposite of hanger. Install ½ the required screws on each side of hanger.

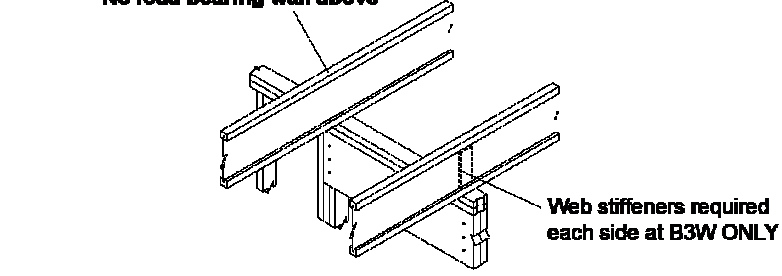
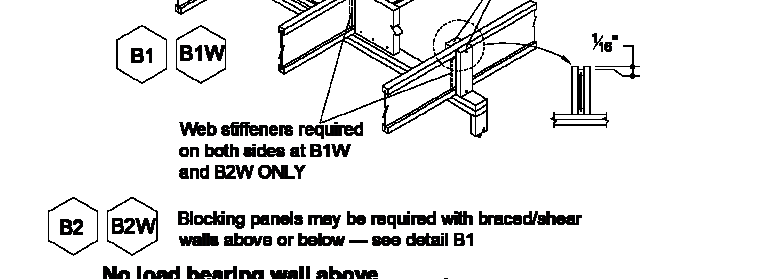
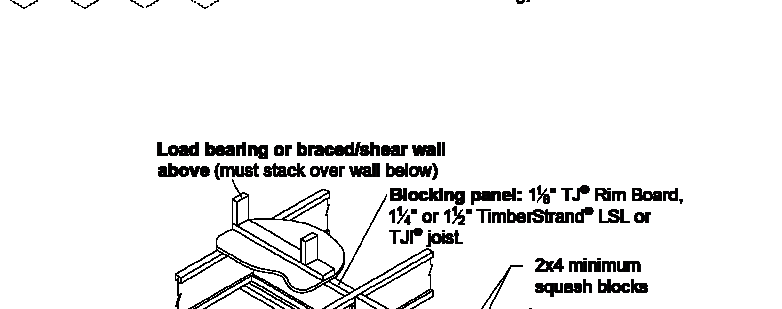


	SIMPSON STRONG-TIE® HANGERS	USP HANGERS
3 PLY SUPPORT BEAM	U HU HHUS HGUS HD THD THDH	
TOTAL # OF 3 ½" TRUSSLOK® SCREWS	4 6 8 14	6 12 16
TOTAL # OF 3 ½" SIMPSON SDS SCREWS	4 4 6 12	6 10 12
4 PLY SUPPORT BEAM	U HU HHUS HGUS HD THD THDH	
TOTAL # OF 6 ½" TRUSSLOK® SCREWS	4 6 10 20	8 16 20
TOTAL # OF 6" SIMPSON SDS SCREWS	6 8 12 24	10 20 26

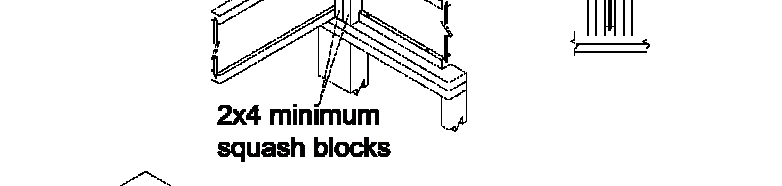
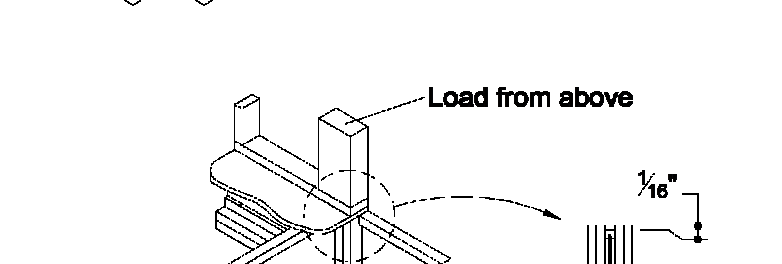
- Connections based on FastenMaster TrussLok® and Simpson Strong-Tie® code reports.
 - All plies assumed to be the same material, grade, and 1½" in thickness.
 - Connections based on given hangers maximum capacity at 100% Load Duration Factor. Adequate for 115% and 125% Load Duration Factor as well.
 - Connection assumes the use of 16d nails and max nailing in hangers.
 - See TB-300 for alternate connector types and loading.



* For A3.1-A3.3 installation specifications see Rim Board Details and installation in Weyerhaeuser Installation Guide for Floor and Roof Framing, TJ-8001.



Blocking panels may be required with braced/shear walls above or below — see detail B1



Use 2x4 minimum squash blocks to transfer load around TJ® joist

