



Butler Manufacturing

a division of BlueScope Buildings North America, Inc.

GENERAL NOTES

MATERIALS
3 PLATE WELDED SECTIONS
COLD FORMED LIGHT GAUGE SHAPES
HOT ROLLED ANGLES
HOLLOW STRUCTURAL SECTION (HSS)
CLADDING

HIGH STRENGTH BOLT TIGHTENING REQUIREMENTS

IT IS THE RESPONSIBILITY OF THE ERECTOR TO ENSURE PROPER BOLT TIGHTNESS IN ACCORDANCE WITH APPLICABLE REGULATIONS. SEE AISC SPECIFICATION FOR STRUCTURAL JOINTS USING HIGH STRENGTH BOLTS FOR MORE INFORMATION. THE BOLT TIGHTNESS (I.E. SNUG TIGHT OR PRE-TENSION) UNLESS REQUIRED OTHERWISE BY LOCAL JURISDICTION OR CONTRACT.

ALL A490 BOLTS SHALL BE "PRE-TENSIONED". A325 BOLTS IN PRIMARY FRAMING AND BRACING CONNECTIONS MAY BE "SNUG-TIGHT" EXCEPT AS FOLLOWS:
PRE-TENSION A325 BOLTS IF BUILDING SUPPORTS A CRANE GREATER THAN 8 TON CAPACITY.

PRE-TENSION A325 BOLTS IF BUILDING SUPPORTS MACHINERY THAT CREATES VIBRATION, IMPACT, OR STRESS REVERSALS ON CONNECTIONS.

PRE-TENSION A325 BOLTS IF LOCATED IN HIGH SEISMIC AREAS. FOR IBC BASED CODES; HIGH SEISMIC IS DESIGN CATEGORY D, E OR F. SEE CODES AND LOADS SECTION BELOW FOR DETAILS.

PRE-TENSION ANY CONNECTION WITH DESIGNATION A325-SC. S-LIP CRITICAL (SC) CONNECTIONS MUST BE FREE OF PAINT, OIL OR OTHER MATERIALS THAT REDUCE FRICTION AT CONTACT SURFACES. GALVANIZED OR LIGHTLY RUSTED SURFACES ARE ACCEPTABLE.

IN CANADA, ALL A325 AND A490 BOLTS SHALL BE "PRE-TENSIONED", EXCEPT FOR SECONDARY MEMBERS AND FLANGE BRACERS.

SECONDARY MEMBERS AND FLANGE BRACE CONNECTIONS ARE ALWAYS "SNUG TIGHT", UNLESS INDICATED OTHERWISE IN ERECTION DRAWING DETAILS.

INSPECTION AND TESTING

SPECIAL INSPECTIONS AND TESTING REQUIRED BY AUTHORITY HAVING JURISDICTION (AHJ) DURING CONSTRUCTION AND/OR STEEL FABRICATION IS THE RESPONSIBILITY OF THE OWNER OR OWNERS AUTHORIZED AGENT. WHEN REQUIRED, THE OWNER SHALL EMPLOY A REGISTERED PROFESSIONAL ENGINEER (RPE) TO CONDUCT SPECIAL INSPECTIONS AND TESTING. THE RPE SHALL BE SPECIFICALLY QUALIFIED FOR THE TYPE OF FABRICATION FACILITIES. THE TYPE AND EXTENT OF SPECIAL INSPECTIONS AND NOT WELD TESTING MUST BE SPECIFICALLY STIPULATED IN CONTRACT DOCUMENTS OR BBMA WILL ASSUME SPECIAL INSPECTIONS AND/OR NOT TESTING ARE WAIVED AS PERMITTED BY THE BUILDING CODE BASED ON BBMA FACILITIES HAS A6472 ACCREDITATION.

DRAWING RELEASE HISTORY

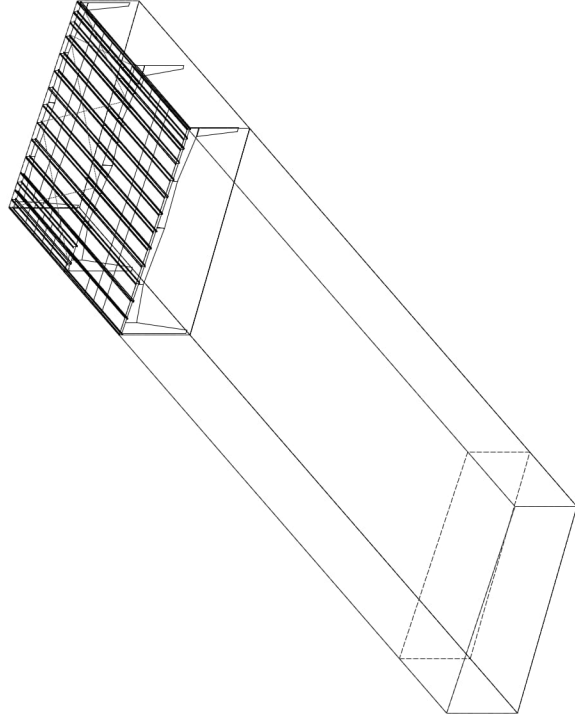
Table with columns: DRAWING TITLE, PAGES, TYPE, DATE, DESCRIPTION

DRAWING INDEX

Table with columns: DRAWING TITLE, PAGES

All primary frames and brace rods are to be class III galvanized per screening document.

Existing purlins must be fully supported upon removal of the existing frame until the new frame is in place.



This document has been electronically signed and sealed by Alan Jungnitsch, PE using my Digital Signature with PE seal affixed. Printed copies of this document are not considered signed and sealed, and the signature copy must be verified on any electronic copy
2024.05.09 14:15:11-05'00'



COVER SHEET table containing project details, customer information, and disclaimer text.

Codes and loads:  
 WHEN MULTIPLE BUILDINGS ARE INVOLVED, SPECIFIC LOAD FACTORS FOR DIFFERING OCCUPANCIES, BUILDING DIMENSIONS, HEIGHTS, FRAMING SYSTEMS, ROOF SLOPES, ETC., MAY RESULT IN DIFFERENT LOAD APPLICATION FACTORS THAN INDICATED BELOW. SEE CALCULATIONS FOR FURTHER DETAILS. WIND LOADS ARE APPLIED TO OVERALL BUILDING ENVELOPE. LOADS ARE APPLIED TO EXTERNAL WIND LOADS. SEE CALCULATIONS FOR FURTHER DETAILS.  
 CITY: Lees Summit  
 County: Jackson  
 State: Missouri

Country: United States

Structural: 16A1SC - ASD Rainfall: 1: 7.00 inches per hour  
 Cold Form: 16A1SI - ASD f': 3000.00 psi Concrete

Roof Live Load: 20.00 psf Not Reducible  
 Roof Dead Load: 20.00 psf

Material Dead Weight  
 Roof Covering + Second, Dead Load: Varies  
 Frame Weight (assumed for seismic): 22.50 psf

Snow Load  
 Ground Snow Load: ps: 20.00 psf  
 Roof Snow Load: ps: 20.00 psf  
 Design Snow (Sloped): ps: 16.50 psf  
 Rain Surcharge: 0.00 psf  
 Specified Minimum Roof Snow: 20.00 psf (Code)  
 Snow Importance: Is: 1.000  
 Snow Exposure: Cs: 1.00  
 Thermal Factor: Unheated - Cti: 1.20  
 Ground / Roof Conversion: 0.70  
 Constructed or Not Slippery

NOT Windborne Debris Region  
 Site Elevation: 1024.0 ft  
 Primary Zone Strip Width: Ra: 12/0/0  
 Parts 1 Portion: 0.00  
 Parts 2 Portion: 0.00  
 Parts 3 Portion: 0.00  
 Roof(s): 0.5h: 10/9/10  
 Velocity Pressure: qz: 24.46, (csc) 24.46 psf

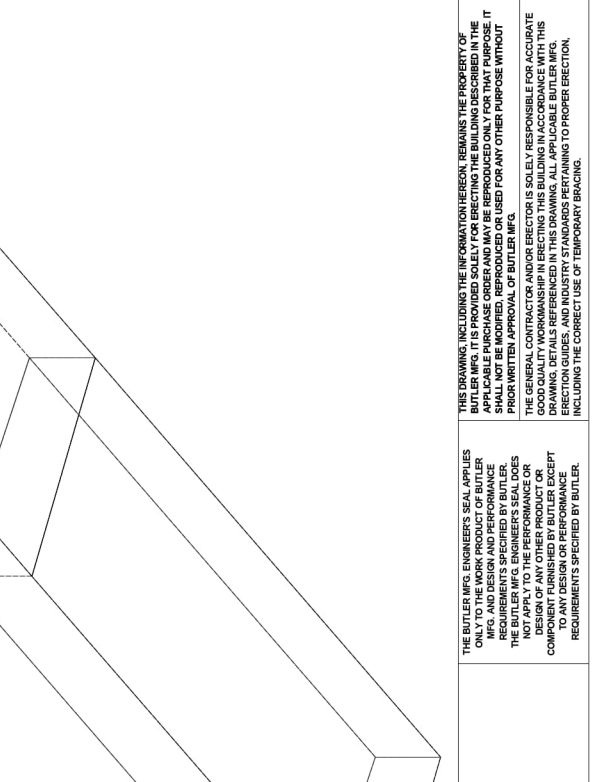
Seismic Load  
 Lateral Force Resisting System using Equivalent Force Procedure  
 Seismic Design Category: B  
 Seismic Importance: Is: 1.000  
 Seismic Exposure: Cs: 1.000  
 Seismic Risk: SRS: 0.1120  
 Seismic Design Parameter: SDI: 0.1120  
 Seismic Design Category: B  
 Seismic Importance: Is: 1.000  
 Seismic Exposure: Cs: 1.000  
 Seismic Risk: SRS: 0.1120  
 Seismic Design Parameter: SDI: 0.1120  
 Seismic Design Category: B  
 Seismic Importance: Is: 1.000  
 Seismic Exposure: Cs: 1.000  
 Seismic Risk: SRS: 0.1120  
 Seismic Design Parameter: SDI: 0.1120

Transverse Direction Parameters  
 System NOT detailed for Seismic  
 Redundancy Factor: Rho: 1.00  
 Fundamental Period: Ta: 0.2383  
 Overstrength Factor: Omega: 2.50  
 Deflection Amplification Factor: Cdt: 3.00  
 Base Shear: V: 0.0427 X W

Longitudinal Direction Parameters  
 System NOT detailed for Seismic  
 Redundancy Factor: Rho: 1.00  
 Fundamental Period: Ta: 0.1838  
 Overstrength Factor: Omega: 2.50  
 Deflection Amplification Factor: Cdt: 3.00  
 Base Shear: V: 0.0427 X W

Diaphragm Condition: Flexible  
 Diaphragm Period Height Used: 19/2/0

Covered Roofs Addition



THIS DRAWING, INCLUDING THE INFORMATION HEREON, REMAINS THE PROPERTY OF BUTLER MFG. ENGINEERS SEAL APPLIES ONLY TO THE WORK PRODUCT OF BUTLER MFG. ENGINEERS SEAL APPLIES AND SHALL NOT BE MODIFIED, REPRODUCED OR USED FOR ANY OTHER PURPOSE WITHOUT PRIOR WRITTEN APPROVAL OF BUTLER MFG. THE GENERAL CONTRACTOR AND/OR ERECTOR IS SOLELY RESPONSIBLE FOR ACCURATE GOOD QUALITY WORKMANSHIP IN ERECTING THIS BUILDING IN ACCORDANCE WITH THIS DRAWING, INCLUDING ALL APPLICABLE ERECTION GUIDES, AND INDUSTRY STANDARDS PERTAINING TO PROPER ERECTION, INCLUDING THE CORRECT USE OF TEMPORARY BRACING.

THE BUTLER MFG. ENGINEERS SEAL APPLIES ONLY TO THE WORK PRODUCT OF BUTLER MFG. ENGINEERS SEAL APPLIES AND SHALL NOT BE MODIFIED, REPRODUCED OR USED FOR ANY OTHER PURPOSE WITHOUT PRIOR WRITTEN APPROVAL OF BUTLER MFG. THE GENERAL CONTRACTOR AND/OR ERECTOR IS SOLELY RESPONSIBLE FOR ACCURATE GOOD QUALITY WORKMANSHIP IN ERECTING THIS BUILDING IN ACCORDANCE WITH THIS DRAWING, INCLUDING ALL APPLICABLE ERECTION GUIDES, AND INDUSTRY STANDARDS PERTAINING TO PROPER ERECTION, INCLUDING THE CORRECT USE OF TEMPORARY BRACING.

REVISIONS

REV	DATE	BY	DESCRIPTION

PROJECT: LSMO Water Utilities  
 CUSTOMER: Lees Summit, Missouri  
 BUILDER: MAR Building Solutions  
 DRAWING SCALE: NTS  
 05/09/2024

PERMIT SET - For Building Dept. Approval

1540 GENESSEE ST. KANSAS CITY, MO 64102

BUTLER MANUFACTURING

DATE: 24/07/26-02  
 DRAWING NO: 2182024  
 SHEET NO: 2 / AMU  
 BUTLER MFG. ENGINEERS SEAL APPLIES  
 BUTLER MANUFACTURING  
 4000 W. 10th Street, Lees Summit, MO 64081



**BUILDER/CONTRACTOR RESPONSIBILITIES**

The Builder follows the guidelines as outlined in the AISC and MBMA Codes of Standard Practice. Butler Mfg. standard product specifications, design, fabrication, quality criteria shall govern all work unless stipulated otherwise in the contract documents. In case of discrepancies between Butler Mfg. structural plans and plans for other trades, Butler Mfg. structural plans shall govern.

It is the responsibility of the Builder to obtain approvals and permits from all governing agencies and jurisdictions as required. Approval of Butler Mfg. drawings constitutes the builders acceptance of Butler interpretation of the contract purchase order. Unless specific design criteria concerning interface design and details are furnished as part of the contract, Butler Mfg. design assumptions shall govern.

Builder engineers are not Project Engineers or Engineers of Record for the overall project. Butler engineering supply sealed engineering design data and drawings for Butler supplied material as part of the overall project for use by others to obtain permits, approvals, and coordinate with other trades. All interface and/or compatibility of any materials not furnished by Butler are to be considered and coordinated by the builder or A/E firm.

**CONSTRUCTION & ERECTION RESPONSIBILITY**

The Builder is responsible for construction in strict accordance with Butler Mfg. "FOR CONSTRUCTION" drawings and all applicable product installation guides. Butler is not responsible for construction of any materials not furnished by Butler. Butler drawings are not marked "FOR CONSTRUCTION", nor any drawings prepared by others.

An erected field assemblies of members shall be as specified in MBMA Code of Standard Practice (in Canada - CSA S16), which require L500 tolerance of installed members. Occasional members shall be installed in strict accordance with the applicable product installation guides. Also included in the erection scope of work. See Erection Guide for shimming procedure. For building with top riding bridle cranes see Crane Data drawing for column plumb tolerance.

The building erector shall be properly licensed and experienced in erecting metal building systems. The Builder is responsible for having knowledge of, and shall comply with, all OSHA requirements and all other relevant safety criteria. The Builder is responsible for designing, supplying, locating and installing temporary supports and bracing during erection of the building. Butler bracing is designed for code required loads after building completion and shall not be considered as adequate erection bracing. See Erection Guide.

Shimming of steel buildings during erection may be required to accommodate allowable tolerances during fabrication and erection. Special care should be taken by the building erector to shim connections where key dimensions must be maintained for building performance as even small deviations can affect the building's structural integrity. Shimming should be done in a systematic manner, especially as the size of the member or building increases. Conditions where shimming should be expected can include but are not limited to large door openings, critical clear height requirements, cranes, buildings greater than 45 feet in height, clear spans greater than 125 feet and adjacent frames with different characteristics (like clear span frames adjacent to an endwall or modular frame). Shims are normally provided by the erector, but may be ordered upon request by contacting your Project Manager.

**EXISTING STRUCTURES**

Builder must be advised of any structure that is within 20 ft. of Butler's building. Load effects from snow drifting, wind effects, and seismic separation must be considered for both the new and existing structures. Butler has designed the new Butler building for these effects. The owner/builder are responsible for employing a Professional Engineer to review and verify the existing structure for all load effects from the adjacent Butler building.

**BRACING**

Tension brace rods work in pairs to balance forces caused by initial tensioning. Care must be taken while tightening brace rods so as not to cause accidental or misalignment of components. All rods must be installed loose and then tightened. Rods should not exhibit excessive sag. For long or heavy rods, or angles if may be necessary to support the rods at mid-bay by suspending them from secondary members.

Bracing for seismic or wind loading of objects or equipment that are not a part of the Butler structure must be designed by a qualified professional to deliver lateral loads to primary frames and rod bracing struts. Equipment bracing and suspension connections must not impose torsion or bending on any Butler member. Butler does not assume any liability for design or installation of bracing systems not furnished by Butler.

**FIELD WELDING**

All field welding shall be done at the direction of a design professional, and done in accordance with governing requirements (AWS in USA, CWB in Canada) by welders qualified to perform the welding as directed by the applicable welding procedure specification (WPS). A WPS shall be prepared by the contractor for each welding variation specified. The contractor is responsible for ensuring that the welds meet the required strength. The minimum tensile strength shall be 70 ksi (480 MPa) tensile strength. For welds in high seismic force resisting system (Seismic Cat D, E or F), minimum Charpy V-Notch toughness shall meet ASCE-341 criteria (20 ft-lb min @0deg F). Interpass temperatures shall not exceed 550deg F (300deg C).

**SIGNAGE**

The Builder is responsible for furnishing signs as required by Code and the Building Department, including but not limited to, exits, occupancy limits, floor loading limits, and bulk storage limits. Floor loading signs shall clearly indicate maximum floor live load permitted.

Bulk storage facilities shall have signs clearly posted on all loaded walls indicating the type of commodity stored and the maximum storage height. Signs shall be clearly visible when building is fully loaded to design level. Overloading of floors or walls may result in failure.

**DELIVERIES**

It is the responsibility of the builder to have adequate equipment available at the job site to take materials from the truck to the building. The Builder is responsible for all retention charges from carriers as a result of job site unloading delays.

Claims for damage or shorts MUST be noted on the Bill-of-Lading or delivery receipt and filed against the carrier by the consignee as per Butler's Terms of Sales (F.O.B. Plant) and returned to Butler immediately. The Builder is responsible for all retention charges from carriers as a result of job site unloading delays.

Material quantities are verified by the Builder against quantities billed on the shipping document. Neither the Manufacturer nor the carrier is responsible for material shortages against quantities billed on the shipping document if such shortages are not noted on the shipping documents upon delivery of material and acknowledged by the carriers agent. For materials conveyed in bundles, wet, banded and crated materials must be unpacked and unbanded immediately to provide drainage of trapped moisture. See Erection Guide for proper job site storage procedure.

**SEALANTS**

Sealants shall be applied in strict accordance with Butler details or weather tightness will be compromised. Sealant must be applied in temperatures and weather conditions consistent with following.

**INDEPENDENT MEZZANINES**

Independent mezzanines must be designed by a professional engineer. The engineer must ensure that proper isolation from the Butler building has been provided to avoid structural damage due to differential movements, or inadvertently apply loads to the Butler structure. Butler accepts no responsibility for the design of the independent mezzanine.

**FIRE CODE COMPLIANCE**

It is the responsibility of the project design professional and builder to comply with local fire code regulations including consideration of, but not limited to, building use and occupancy, all building construction materials, separation requirements, egress requirements, fire protection systems, etc. Builder shall advise Butler of any special requirements to be furnished by Butler.

**FIELD MODIFICATIONS**

Modifications to this building from details and instructions contained on these drawings must be approved in writing by Butler Mfg. engineers, or other licensed structural engineer. This includes, but is not limited to, removal of roof or wall cladding, removing or moving any flange braces or rod braces, cutting of openings for doors, windows or RTUs, correction of fabrication errors, etc. The owner shall not impose loads to this structure beyond what is specified for this building in unannotated additions, alterations, or added loads to this structure.

If the builder intends to invoice Butler Mfg. for modifications in excess of \$1000, The builder must notify Butler Mfg. immediately, and obtain a Work Authorization from Butler Mfg prior to proceeding. All field claims must be submitted to Butler Mfg with all supporting documentation within 30 days of the date of the modification. Correction of minor mistakes, shimming and plumbing, moderate amount of reaming, drilling, chipping / cutting and minor welding are considered by Code of Standard Practice to be part of erection and are not subject to claim reimbursement.

**CONCRETE/MASONRY/CONVENTIONAL STUD WALLS**

The engineer responsible for the design of the wall system is responsible for coordinating with, or providing, special base details, and wall to Butler steel connections. All fasteners, sealant and counter flashing of wall systems are to be provided by contractor. The engineer responsible for the wall shall design the anchorage to Butler supporting elements consistent with Code required forces.

**THE BUTLER MFG. ENGINEERS SEAL APPLIES ONLY TO THE WORK PRODUCT OF BUTLER MFG. AND DESIGN AND PERFORMANCE OF BUTLER MFG. PRODUCTS. THE BUTLER MFG. ENGINEERS SEAL DOES NOT APPLY TO THE PERFORMANCE OR DESIGN OF ANY OTHER PRODUCT OR TO ANY DESIGN OR PERFORMANCE REQUIREMENTS SPECIFIED BY BUTLER.**

**THIS DRAWING, INCLUDING THE INFORMATION HEREON, REMAINS THE PROPERTY OF BUTLER MFG. IT IS PROVIDED AS A GUIDE FOR ERECTING THE BUILDING DESCRIBED IN THE DRAWING. IT IS NOT TO BE REPRODUCED, COPIED, REPRODUCED OR USED FOR ANY OTHER PURPOSE WITHOUT PRIOR WRITTEN APPROVAL OF BUTLER MFG.**

**THE GENERAL CONTRACTOR AND/OR ERECTOR IS SOLELY RESPONSIBLE FOR ACCURATE GOOD QUALITY WORKMANSHIP IN ERECTING THIS BUILDING IN ACCORDANCE WITH THIS DRAWING AND ALL APPLICABLE CODES, REGULATIONS, AND INDUSTRY STANDARDS PERTAINING TO PROPER ERECTION, INCLUDING THE CORRECT USE OF TEMPORARY BRACING.**

**REVISIONS**

REV	DATE	BY	DESCRIPTION

DRWING SCALE: NTS

**ERECTION NOTES**

**BUTLER MANUFACTURING**  
 1540 GENESSEE ST. KANSAS CITY, MO 64102

**BUILDER:** MAR Building Solutions  
**CUSTOMER:** Leas Summit, Missouri  
**LOCATION:** Leas Summit, Missouri  
**PRODUCT:** LSMO Water Utilities  
**BUILDERS DOW:**

**PERMIT SET - For Building Dept. Approval**

**ERECTION NOTES**

**BUTLER MANUFACTURING**  
 1540 GENESSEE ST. KANSAS CITY, MO 64102

**BUILDER:** MAR Building Solutions  
**CUSTOMER:** Leas Summit, Missouri  
**LOCATION:** Leas Summit, Missouri  
**PRODUCT:** LSMO Water Utilities  
**BUILDERS DOW:**

**ERECTION NOTES**

**BUTLER MANUFACTURING**  
 1540 GENESSEE ST. KANSAS CITY, MO 64102

**BUILDER:** MAR Building Solutions  
**CUSTOMER:** Leas Summit, Missouri  
**LOCATION:** Leas Summit, Missouri  
**PRODUCT:** LSMO Water Utilities  
**BUILDERS DOW:**

**ERECTION NOTES**

**BUTLER MANUFACTURING**  
 1540 GENESSEE ST. KANSAS CITY, MO 64102

**BUILDER:** MAR Building Solutions  
**CUSTOMER:** Leas Summit, Missouri  
**LOCATION:** Leas Summit, Missouri  
**PRODUCT:** LSMO Water Utilities  
**BUILDERS DOW:**

**ERECTION NOTES**

**BUTLER MANUFACTURING**  
 1540 GENESSEE ST. KANSAS CITY, MO 64102

**BUILDER:** MAR Building Solutions  
**CUSTOMER:** Leas Summit, Missouri  
**LOCATION:** Leas Summit, Missouri  
**PRODUCT:** LSMO Water Utilities  
**BUILDERS DOW:**

**ERECTION NOTES**

**BUTLER MANUFACTURING**  
 1540 GENESSEE ST. KANSAS CITY, MO 64102

**BUILDER:** MAR Building Solutions  
**CUSTOMER:** Leas Summit, Missouri  
**LOCATION:** Leas Summit, Missouri  
**PRODUCT:** LSMO Water Utilities  
**BUILDERS DOW:**

**ERECTION NOTES**

**BUTLER MANUFACTURING**  
 1540 GENESSEE ST. KANSAS CITY, MO 64102

**BUILDER:** MAR Building Solutions  
**CUSTOMER:** Leas Summit, Missouri  
**LOCATION:** Leas Summit, Missouri  
**PRODUCT:** LSMO Water Utilities  
**BUILDERS DOW:**

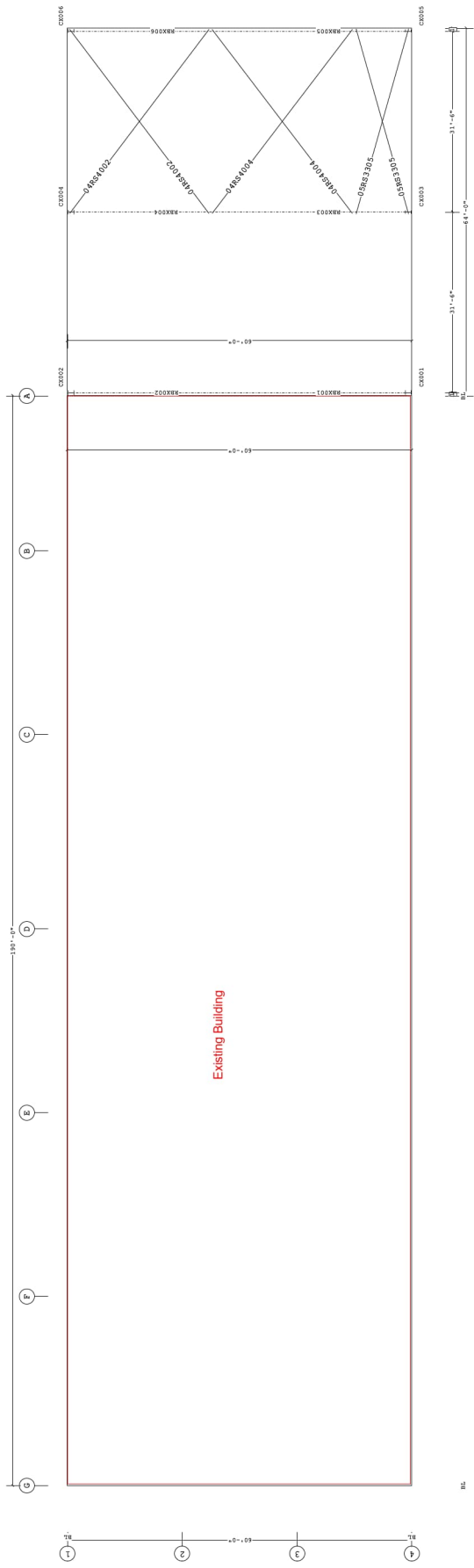
**ERECTION NOTES**

**BUTLER MANUFACTURING**  
 1540 GENESSEE ST. KANSAS CITY, MO 64102

**BUILDER:** MAR Building Solutions  
**CUSTOMER:** Leas Summit, Missouri  
**LOCATION:** Leas Summit, Missouri  
**PRODUCT:** LSMO Water Utilities  
**BUILDERS DOW:**







PRIMARY AND ROOF BRACING PLAN

Bracing Part Schedule

Part	Qty	Length
BR0102	2	40'-2"
BR0104	2	40'-2"
BR0106	2	33'-5"
BR0108	2	33'-5"

- Detail
- USE 1/2" X 1/2" ADAPT BOLT (4890) AND NUT (4719)
  - USE WASHERS, SNUG TIGHTEN BOLTS FOR ALL SECONDARY CONNECTIONS, SECONDARY CLIP CONNECTIONS, AND FLANGE BRACE CONNECTIONS.
  - SLOT BRACING MEMBER BOLTS NEED NOT BE LOCATED ON THE SAME SIDE OF THE WEB AS THE HILLSIDE WASHER.

1 6" Dimension Key

THE BUTLER MFG. ENGINEER'S SEAL APPLIES ONLY TO THE WORK PRODUCT OF BUTLER MFG. AND DESIGN AND PERFORMANCE REQUIREMENTS SPECIFIED BY BUTLER. THE BUTLER MFG. ENGINEER'S SEAL DOES NOT APPLY TO THE PERFORMANCE OR DESIGN OF ANY OTHER PRODUCT OR COMPONENT. BUTLER MAKES NO REPRESENTATION AS TO ANY DESIGN OR PERFORMANCE REQUIREMENTS SPECIFIED BY BUTLER.

THIS DRAWING, INCLUDING THE INFORMATION HEREON, REMAINS THE PROPERTY OF BUTLER. IF IT IS PROVIDED FOR BRACING THE BUILDING DESCRIBED IN THE SPALLS, IT IS NOT TO BE REPRODUCED OR USED FOR ANY OTHER PURPOSE WITHOUT PRIOR WRITTEN APPROVAL OF BUTLER MFG.

THE GENERAL CONTRACTOR AND/OR ERECTOR IS SOLELY RESPONSIBLE FOR ACCURATE GOOD QUALITY WORKMANSHIP IN ERECTING THIS BUILDING IN ACCORDANCE WITH THIS DRAWING, ALL APPLICABLE CODES, AND INDUSTRY STANDARDS PERTAINING TO PROPER ERECTION, INCLUDING THE CORRECT USE OF TEMPORARY BRACING.

REV	DATE	BY	DESCRIPTION
D			BUTLER MANUFACTURING 1540 GENESEE ST. KANSAS CITY, MO 64102

PERMIT SET - For Building Dept. Approval

**PRIMARY AND ROOF BRACING PLAN**

BUILDER: MAR Building Solutions  
CUSTOMER: Lees Summit, Missouri  
LOCATION: Lees Summit, Missouri  
PRODUCT: LSMO Water Utilities  
BUILDERS JOB: BUTLER MFG. 2411

DATE: 24/07/26-02  
DATE: 07/18/2024  
DATE: 07/18/2024  
DATE: 07/18/2024

FILE NO: 2411  
PAGE: 6





Frame Members Schedule:  
 Part No. Mem. Width Thick Webbrk. Depth1 Depth2 Approx. Length Approx. Weight  
 CX005 1 6.0000 .3125 .1345 1'-0" 2'-3" 12'-1 1/2" 293#  
 RX005 2 5.0000 .3125 .1345 2'-0" 1'-0" 29'-0 3/4" 557#  
 CX006 3 5.0000 .2500 .1345 1'-0" 1'-2" 28'-10 13/16" 614#  
 RX006 4 5.0000 .3750 .1644 1'-2" 2'-3" 18'-6 7/16" 620#  
 CX006 5 5.0000 .3750 .1644 1'-2" 1'-11" 18'-6 7/16" 620#  
 CX006 6 6.0000 .3750 .1644 1'-0" 1'-11" 18'-6 7/16" 620#

Clamp Connections & Plate Schedule:  
 Id Qty Grade Bolt Plate Length Thick. Rows Rows Part No.  
 A 8 A325 3/4" 2 1/2" 1/2" 3 1 0097284  
 B 12 A325 3/4" 2 1/2" 1/2" 4 2 0097284  
 C 12 A325 3/4" 2 1/2" 1/2" 4 2 0097284

Frame Clearances  
 Horiz. Clearance between members 1 (CX005) and 6 (CX006) : 55'-6 3/4"  
 Vert. Clearance at member 1 (CX005) : 15'-1 1/2"  
 Vert. Clearance at member 6 (CX006) : 17'-1 15/16"  
 Finished Floor Elevation = 100'-0" (Unless Noted Otherwise)

1  
 2  
 3  
 4  
 5  
 6  
 7  
 8  
 9  
 10  
 11  
 12  
 13  
 14  
 15  
 16  
 17  
 18  
 19  
 20  
 21  
 22  
 23  
 24  
 25  
 26  
 27  
 28  
 29  
 30  
 31  
 32  
 33  
 34  
 35  
 36  
 37  
 38  
 39  
 40  
 41  
 42  
 43  
 44  
 45  
 46  
 47  
 48  
 49  
 50  
 51  
 52  
 53  
 54  
 55  
 56  
 57  
 58  
 59  
 60  
 61  
 62  
 63  
 64  
 65  
 66  
 67  
 68  
 69  
 70  
 71  
 72  
 73  
 74  
 75  
 76  
 77  
 78  
 79  
 80  
 81  
 82  
 83  
 84  
 85  
 86  
 87  
 88  
 89  
 90  
 91  
 92  
 93  
 94  
 95  
 96  
 97  
 98  
 99  
 100

1  
 2  
 3  
 4  
 5  
 6  
 7  
 8  
 9  
 10  
 11  
 12  
 13  
 14  
 15  
 16  
 17  
 18  
 19  
 20  
 21  
 22  
 23  
 24  
 25  
 26  
 27  
 28  
 29  
 30  
 31  
 32  
 33  
 34  
 35  
 36  
 37  
 38  
 39  
 40  
 41  
 42  
 43  
 44  
 45  
 46  
 47  
 48  
 49  
 50  
 51  
 52  
 53  
 54  
 55  
 56  
 57  
 58  
 59  
 60  
 61  
 62  
 63  
 64  
 65  
 66  
 67  
 68  
 69  
 70  
 71  
 72  
 73  
 74  
 75  
 76  
 77  
 78  
 79  
 80  
 81  
 82  
 83  
 84  
 85  
 86  
 87  
 88  
 89  
 90  
 91  
 92  
 93  
 94  
 95  
 96  
 97  
 98  
 99  
 100

1  
 2  
 3  
 4  
 5  
 6  
 7  
 8  
 9  
 10  
 11  
 12  
 13  
 14  
 15  
 16  
 17  
 18  
 19  
 20  
 21  
 22  
 23  
 24  
 25  
 26  
 27  
 28  
 29  
 30  
 31  
 32  
 33  
 34  
 35  
 36  
 37  
 38  
 39  
 40  
 41  
 42  
 43  
 44  
 45  
 46  
 47  
 48  
 49  
 50  
 51  
 52  
 53  
 54  
 55  
 56  
 57  
 58  
 59  
 60  
 61  
 62  
 63  
 64  
 65  
 66  
 67  
 68  
 69  
 70  
 71  
 72  
 73  
 74  
 75  
 76  
 77  
 78  
 79  
 80  
 81  
 82  
 83  
 84  
 85  
 86  
 87  
 88  
 89  
 90  
 91  
 92  
 93  
 94  
 95  
 96  
 97  
 98  
 99  
 100

1  
 2  
 3  
 4  
 5  
 6  
 7  
 8  
 9  
 10  
 11  
 12  
 13  
 14  
 15  
 16  
 17  
 18  
 19  
 20  
 21  
 22  
 23  
 24  
 25  
 26  
 27  
 28  
 29  
 30  
 31  
 32  
 33  
 34  
 35  
 36  
 37  
 38  
 39  
 40  
 41  
 42  
 43  
 44  
 45  
 46  
 47  
 48  
 49  
 50  
 51  
 52  
 53  
 54  
 55  
 56  
 57  
 58  
 59  
 60  
 61  
 62  
 63  
 64  
 65  
 66  
 67  
 68  
 69  
 70  
 71  
 72  
 73  
 74  
 75  
 76  
 77  
 78  
 79  
 80  
 81  
 82  
 83  
 84  
 85  
 86  
 87  
 88  
 89  
 90  
 91  
 92  
 93  
 94  
 95  
 96  
 97  
 98  
 99  
 100

1  
 2  
 3  
 4  
 5  
 6  
 7  
 8  
 9  
 10  
 11  
 12  
 13  
 14  
 15  
 16  
 17  
 18  
 19  
 20  
 21  
 22  
 23  
 24  
 25  
 26  
 27  
 28  
 29  
 30  
 31  
 32  
 33  
 34  
 35  
 36  
 37  
 38  
 39  
 40  
 41  
 42  
 43  
 44  
 45  
 46  
 47  
 48  
 49  
 50  
 51  
 52  
 53  
 54  
 55  
 56  
 57  
 58  
 59  
 60  
 61  
 62  
 63  
 64  
 65  
 66  
 67  
 68  
 69  
 70  
 71  
 72  
 73  
 74  
 75  
 76  
 77  
 78  
 79  
 80  
 81  
 82  
 83  
 84  
 85  
 86  
 87  
 88  
 89  
 90  
 91  
 92  
 93  
 94  
 95  
 96  
 97  
 98  
 99  
 100

1  
 2  
 3  
 4  
 5  
 6  
 7  
 8  
 9  
 10  
 11  
 12  
 13  
 14  
 15  
 16  
 17  
 18  
 19  
 20  
 21  
 22  
 23  
 24  
 25  
 26  
 27  
 28  
 29  
 30  
 31  
 32  
 33  
 34  
 35  
 36  
 37  
 38  
 39  
 40  
 41  
 42  
 43  
 44  
 45  
 46  
 47  
 48  
 49  
 50  
 51  
 52  
 53  
 54  
 55  
 56  
 57  
 58  
 59  
 60  
 61  
 62  
 63  
 64  
 65  
 66  
 67  
 68  
 69  
 70  
 71  
 72  
 73  
 74  
 75  
 76  
 77  
 78  
 79  
 80  
 81  
 82  
 83  
 84  
 85  
 86  
 87  
 88  
 89  
 90  
 91  
 92  
 93  
 94  
 95  
 96  
 97  
 98  
 99  
 100

1  
 2  
 3  
 4  
 5  
 6  
 7  
 8  
 9  
 10  
 11  
 12  
 13  
 14  
 15  
 16  
 17  
 18  
 19  
 20  
 21  
 22  
 23  
 24  
 25  
 26  
 27  
 28  
 29  
 30  
 31  
 32  
 33  
 34  
 35  
 36  
 37  
 38  
 39  
 40  
 41  
 42  
 43  
 44  
 45  
 46  
 47  
 48  
 49  
 50  
 51  
 52  
 53  
 54  
 55  
 56  
 57  
 58  
 59  
 60  
 61  
 62  
 63  
 64  
 65  
 66  
 67  
 68  
 69  
 70  
 71  
 72  
 73  
 74  
 75  
 76  
 77  
 78  
 79  
 80  
 81  
 82  
 83  
 84  
 85  
 86  
 87  
 88  
 89  
 90  
 91  
 92  
 93  
 94  
 95  
 96  
 97  
 98  
 99  
 100

1  
 2  
 3  
 4  
 5  
 6  
 7  
 8  
 9  
 10  
 11  
 12  
 13  
 14  
 15  
 16  
 17  
 18  
 19  
 20  
 21  
 22  
 23  
 24  
 25  
 26  
 27  
 28  
 29  
 30  
 31  
 32  
 33  
 34  
 35  
 36  
 37  
 38  
 39  
 40  
 41  
 42  
 43  
 44  
 45  
 46  
 47  
 48  
 49  
 50  
 51  
 52  
 53  
 54  
 55  
 56  
 57  
 58  
 59  
 60  
 61  
 62  
 63  
 64  
 65  
 66  
 67  
 68  
 69  
 70  
 71  
 72  
 73  
 74  
 75  
 76  
 77  
 78  
 79  
 80  
 81  
 82  
 83  
 84  
 85  
 86  
 87  
 88  
 89  
 90  
 91  
 92  
 93  
 94  
 95  
 96  
 97  
 98  
 99  
 100

1  
 2  
 3  
 4  
 5  
 6  
 7  
 8  
 9  
 10  
 11  
 12  
 13  
 14  
 15  
 16  
 17  
 18  
 19  
 20  
 21  
 22  
 23  
 24  
 25  
 26  
 27  
 28  
 29  
 30  
 31  
 32  
 33  
 34  
 35  
 36  
 37  
 38  
 39  
 40  
 41  
 42  
 43  
 44  
 45  
 46  
 47  
 48  
 49  
 50  
 51  
 52  
 53  
 54  
 55  
 56  
 57  
 58  
 59  
 60  
 61  
 62  
 63  
 64  
 65  
 66  
 67  
 68  
 69  
 70  
 71  
 72  
 73  
 74  
 75  
 76  
 77  
 78  
 79  
 80  
 81  
 82  
 83  
 84  
 85  
 86  
 87  
 88  
 89  
 90  
 91  
 92  
 93  
 94  
 95  
 96  
 97  
 98  
 99  
 100

1  
 2  
 3  
 4  
 5  
 6  
 7  
 8  
 9  
 10  
 11  
 12  
 13  
 14  
 15  
 16  
 17  
 18  
 19  
 20  
 21  
 22  
 23  
 24  
 25  
 26  
 27  
 28  
 29  
 30  
 31  
 32  
 33  
 34  
 35  
 36  
 37  
 38  
 39  
 40  
 41  
 42  
 43  
 44  
 45  
 46  
 47  
 48  
 49  
 50  
 51  
 52  
 53  
 54  
 55  
 56  
 57  
 58  
 59  
 60  
 61  
 62  
 63  
 64  
 65  
 66  
 67  
 68  
 69  
 70  
 71  
 72  
 73  
 74  
 75  
 76  
 77  
 78  
 79  
 80  
 81  
 82  
 83  
 84  
 85  
 86  
 87  
 88  
 89  
 90  
 91  
 92  
 93  
 94  
 95  
 96  
 97  
 98  
 99  
 100

1  
 2  
 3  
 4  
 5  
 6  
 7  
 8  
 9  
 10  
 11  
 12  
 13  
 14  
 15  
 16  
 17  
 18  
 19  
 20  
 21  
 22  
 23  
 24  
 25  
 26  
 27  
 28  
 29  
 30  
 31  
 32  
 33  
 34  
 35  
 36  
 37  
 38  
 39  
 40  
 41  
 42  
 43  
 44  
 45  
 46  
 47  
 48  
 49  
 50  
 51  
 52  
 53  
 54  
 55  
 56  
 57  
 58  
 59  
 60  
 61  
 62  
 63  
 64  
 65  
 66  
 67  
 68  
 69  
 70  
 71  
 72  
 73  
 74  
 75  
 76  
 77  
 78  
 79  
 80  
 81  
 82  
 83  
 84  
 85  
 86  
 87  
 88  
 89  
 90  
 91  
 92  
 93  
 94  
 95  
 96  
 97  
 98  
 99  
 100

1  
 2  
 3  
 4  
 5  
 6  
 7  
 8  
 9  
 10  
 11  
 12  
 13  
 14  
 15  
 16  
 17  
 18  
 19  
 20  
 21  
 22  
 23  
 24  
 25  
 26  
 27  
 28  
 29  
 30  
 31  
 32  
 33  
 34  
 35  
 36  
 37  
 38  
 39  
 40  
 41  
 42  
 43  
 44  
 45  
 46  
 47  
 48  
 49  
 50  
 51  
 52  
 53  
 54  
 55  
 56  
 57  
 58  
 59  
 60  
 61  
 62  
 63  
 64  
 65  
 66  
 67  
 68  
 69  
 70  
 71  
 72  
 73  
 74  
 75  
 76  
 77  
 78  
 79  
 80  
 81  
 82  
 83  
 84  
 85  
 86  
 87  
 88  
 89  
 90  
 91  
 92  
 93  
 94  
 95  
 96  
 97  
 98  
 99  
 100

1  
 2  
 3  
 4  
 5  
 6  
 7  
 8  
 9  
 10  
 11  
 12  
 13  
 14  
 15  
 16  
 17  
 18  
 19  
 20  
 21  
 22  
 23  
 24  
 25  
 26  
 27  
 28  
 29  
 30  
 31  
 32  
 33  
 34  
 35  
 36  
 37  
 38  
 39  
 40  
 41  
 42  
 43  
 44  
 45  
 46  
 47  
 48  
 49  
 50  
 51  
 52  
 53  
 54  
 55  
 56  
 57  
 58  
 59  
 60  
 61  
 62  
 63  
 64  
 65  
 66  
 67  
 68  
 69  
 70  
 71  
 72  
 73  
 74  
 75  
 76  
 77  
 78  
 79  
 80  
 81  
 82  
 83  
 84  
 85  
 86  
 87  
 88  
 89  
 90  
 91  
 92  
 93  
 94  
 95  
 96  
 97  
 98  
 99  
 100

1  
 2  
 3  
 4  
 5  
 6  
 7  
 8  
 9  
 10  
 11  
 12  
 13  
 14  
 15  
 16  
 17  
 18  
 19  
 20  
 21  
 22  
 23  
 24  
 25  
 26  
 27  
 28  
 29  
 30  
 31  
 32  
 33  
 34  
 35  
 36  
 37  
 38  
 39  
 40  
 41  
 42  
 43  
 44  
 45  
 46  
 47  
 48  
 49  
 50  
 51  
 52  
 53  
 54  
 55  
 56  
 57  
 58  
 59  
 60  
 61  
 62  
 63  
 64  
 65  
 66  
 67  
 68  
 69  
 70  
 71  
 72  
 73  
 74  
 75  
 76  
 77  
 78  
 79  
 80  
 81  
 82  
 83  
 84  
 85  
 86  
 87  
 88  
 89  
 90  
 91  
 92  
 93  
 94  
 95  
 96  
 97  
 98  
 99  
 100

1  
 2  
 3  
 4  
 5  
 6  
 7  
 8  
 9  
 10  
 11  
 12  
 13  
 14  
 15  
 16  
 17  
 18  
 19  
 20  
 21  
 22  
 23  
 24  
 25  
 26  
 27  
 28  
 29  
 30  
 31  
 32  
 33  
 34  
 35  
 36  
 37  
 38  
 39  
 40  
 41  
 42  
 43  
 44  
 45  
 46  
 47  
 48  
 49  
 50  
 51  
 52  
 53  
 54  
 55  
 56  
 57  
 58  
 59  
 60  
 61  
 62  
 63  
 64  
 65  
 66  
 67  
 68  
 69  
 70  
 71  
 72  
 73  
 74  
 75  
 76  
 77  
 78  
 79  
 80  
 81  
 82  
 83  
 84  
 85  
 86  
 87  
 88  
 89  
 90  
 91  
 92  
 93  
 94  
 95  
 96  
 97  
 98  
 99  
 100

1  
 2  
 3  
 4  
 5  
 6  
 7  
 8  
 9  
 10  
 11  
 12  
 13  
 14  
 15  
 16  
 17  
 18  
 19  
 20  
 21  
 22  
 23  
 24  
 25  
 26  
 27  
 28  
 29  
 30  
 31  
 32  
 33  
 34  
 35  
 36  
 37  
 38  
 39  
 40  
 41  
 42  
 43  
 44  
 45  
 46  
 47  
 48  
 49  
 50  
 51  
 52  
 53  
 54  
 55  
 56  
 57  
 58  
 59  
 60  
 61  
 62  
 63  
 64  
 65  
 66  
 67  
 68  
 69  
 70  
 71  
 72  
 73  
 74  
 75  
 76  
 77  
 78  
 79  
 80  
 81  
 82  
 83  
 84  
 85  
 86  
 87  
 88  
 89  
 90  
 91  
 92  
 93  
 94  
 95  
 96  
 97  
 98  
 99  
 100

1  
 2  
 3



Secondary Part Schedule	Part	Thick.	Depth	Imp	Detail
E1	0011H8311141030	0.1130	11 1/2"		BR09W2
E2	0011H8311141030	0.1130	11 1/2"		RS12FP, RS12FP, RS12FP
E3	0011H8311141030	0.1130	11 1/2"		RS12FP, RS12FP, RS12FP
F1	1123514118983	0.1130	11 1/2"		RS0271, RS03U9
F2	11232064118883	0.1130	11 1/2"	3'-10 1/2"	RS0271, RS03TC

Detail	Part	Thick.	Depth	Imp
BR09W2	001SGA08001			
RS12FP, RS12FP, RS12FP	001SGA19054			
RS12FP, RS12FP, RS12FP	001SGA19154			
RS0271, RS03U9	001SGA19154			
RS0271, RS03TC	001SGA19154			

Secondary Part Schedule	Part	Thick.	Depth	Imp	Detail
BR09K5, BR09JG, BR09JK, BR09KZ, BR09JP	001SGA08001				
BR09K5, BR09JG, BR09JK, BR09KZ, BR09JP	001SGA19054				
BR09K5, BR09JG, BR09JK, BR09KZ, BR09JP	001SGA19154				
BR09K5, BR09JG, BR09JK, BR09KZ, BR09JP	001SGA19154				

Secondary Part Schedule	Part	Thick.	Depth	Imp	Detail
BR09K5, BR09JG, BR09JK, BR09KZ, BR09JP	001SGA08001				
BR09K5, BR09JG, BR09JK, BR09KZ, BR09JP	001SGA19054				
BR09K5, BR09JG, BR09JK, BR09KZ, BR09JP	001SGA19154				
BR09K5, BR09JG, BR09JK, BR09KZ, BR09JP	001SGA19154				

Secondary Part Schedule	Part	Thick.	Depth	Imp	Detail
BR09K5, BR09JG, BR09JK, BR09KZ, BR09JP	001SGA08001				
BR09K5, BR09JG, BR09JK, BR09KZ, BR09JP	001SGA19054				
BR09K5, BR09JG, BR09JK, BR09KZ, BR09JP	001SGA19154				
BR09K5, BR09JG, BR09JK, BR09KZ, BR09JP	001SGA19154				

Secondary Part Schedule	Part	Thick.	Depth	Imp	Detail
BR09K5, BR09JG, BR09JK, BR09KZ, BR09JP	001SGA08001				
BR09K5, BR09JG, BR09JK, BR09KZ, BR09JP	001SGA19054				
BR09K5, BR09JG, BR09JK, BR09KZ, BR09JP	001SGA19154				
BR09K5, BR09JG, BR09JK, BR09KZ, BR09JP	001SGA19154				

Secondary Part Schedule	Part	Thick.	Depth	Imp	Detail
BR09K5, BR09JG, BR09JK, BR09KZ, BR09JP	001SGA08001				
BR09K5, BR09JG, BR09JK, BR09KZ, BR09JP	001SGA19054				
BR09K5, BR09JG, BR09JK, BR09KZ, BR09JP	001SGA19154				
BR09K5, BR09JG, BR09JK, BR09KZ, BR09JP	001SGA19154				

Secondary Part Schedule	Part	Thick.	Depth	Imp	Detail
BR09K5, BR09JG, BR09JK, BR09KZ, BR09JP	001SGA08001				
BR09K5, BR09JG, BR09JK, BR09KZ, BR09JP	001SGA19054				
BR09K5, BR09JG, BR09JK, BR09KZ, BR09JP	001SGA19154				
BR09K5, BR09JG, BR09JK, BR09KZ, BR09JP	001SGA19154				

Secondary Part Schedule	Part	Thick.	Depth	Imp	Detail
BR09K5, BR09JG, BR09JK, BR09KZ, BR09JP	001SGA08001				
BR09K5, BR09JG, BR09JK, BR09KZ, BR09JP	001SGA19054				
BR09K5, BR09JG, BR09JK, BR09KZ, BR09JP	001SGA19154				
BR09K5, BR09JG, BR09JK, BR09KZ, BR09JP	001SGA19154				

Secondary Part Schedule	Part	Thick.	Depth	Imp	Detail
BR09K5, BR09JG, BR09JK, BR09KZ, BR09JP	001SGA08001				
BR09K5, BR09JG, BR09JK, BR09KZ, BR09JP	001SGA19054				
BR09K5, BR09JG, BR09JK, BR09KZ, BR09JP	001SGA19154				
BR09K5, BR09JG, BR09JK, BR09KZ, BR09JP	001SGA19154				

Secondary Part Schedule	Part	Thick.	Depth	Imp	Detail
BR09K5, BR09JG, BR09JK, BR09KZ, BR09JP	001SGA08001				
BR09K5, BR09JG, BR09JK, BR09KZ, BR09JP	001SGA19054				
BR09K5, BR09JG, BR09JK, BR09KZ, BR09JP	001SGA19154				
BR09K5, BR09JG, BR09JK, BR09KZ, BR09JP	001SGA19154				

Secondary Part Schedule	Part	Thick.	Depth	Imp	Detail
BR09K5, BR09JG, BR09JK, BR09KZ, BR09JP	001SGA08001				
BR09K5, BR09JG, BR09JK, BR09KZ, BR09JP	001SGA19054				
BR09K5, BR09JG, BR09JK, BR09KZ, BR09JP	001SGA19154				
BR09K5, BR09JG, BR09JK, BR09KZ, BR09JP	001SGA19154				

Secondary Part Schedule	Part	Thick.	Depth	Imp	Detail
BR09K5, BR09JG, BR09JK, BR09KZ, BR09JP	001SGA08001				
BR09K5, BR09JG, BR09JK, BR09KZ, BR09JP	001SGA19054				
BR09K5, BR09JG, BR09JK, BR09KZ, BR09JP	001SGA19154				
BR09K5, BR09JG, BR09JK, BR09KZ, BR09JP	001SGA19154				

Secondary Part Schedule	Part	Thick.	Depth	Imp	Detail
BR09K5, BR09JG, BR09JK, BR09KZ, BR09JP	001SGA08001				
BR09K5, BR09JG, BR09JK, BR09KZ, BR09JP	001SGA19054				
BR09K5, BR09JG, BR09JK, BR09KZ, BR09JP	001SGA19154				
BR09K5, BR09JG, BR09JK, BR09KZ, BR09JP	001SGA19154				

Secondary Part Schedule	Part	Thick.	Depth	Imp	Detail
BR09K5, BR09JG, BR09JK, BR09KZ, BR09JP	001SGA08001				
BR09K5, BR09JG, BR09JK, BR09KZ, BR09JP	001SGA19054				
BR09K5, BR09JG, BR09JK, BR09KZ, BR09JP	001SGA19154				
BR09K5, BR09JG, BR09JK, BR09KZ, BR09JP	001SGA19154				


1. UNLESS NOTED, USE 1/2 X 1 1/2 A307 BOLT (4099) AND NUT (4719)  
 2. WASHERS, SNUG TIGHTEN BOLTS FOR ALL SECONDARY CONNECTIONS.  
 3. FLANGE BRACES ARE AN INTEGRAL PART OF THE STABILITY OF THE STRUCTURE AND MUST BE PROPERLY INSTALLED PRIOR TO ERECTION OF WALL AND ROOF SHEET.  
 4. REMOVAL OR ALTERATION OF ANY COMPONENT IS PROHIBITED.

**PERMIT SET - For Building Dept. Approval**

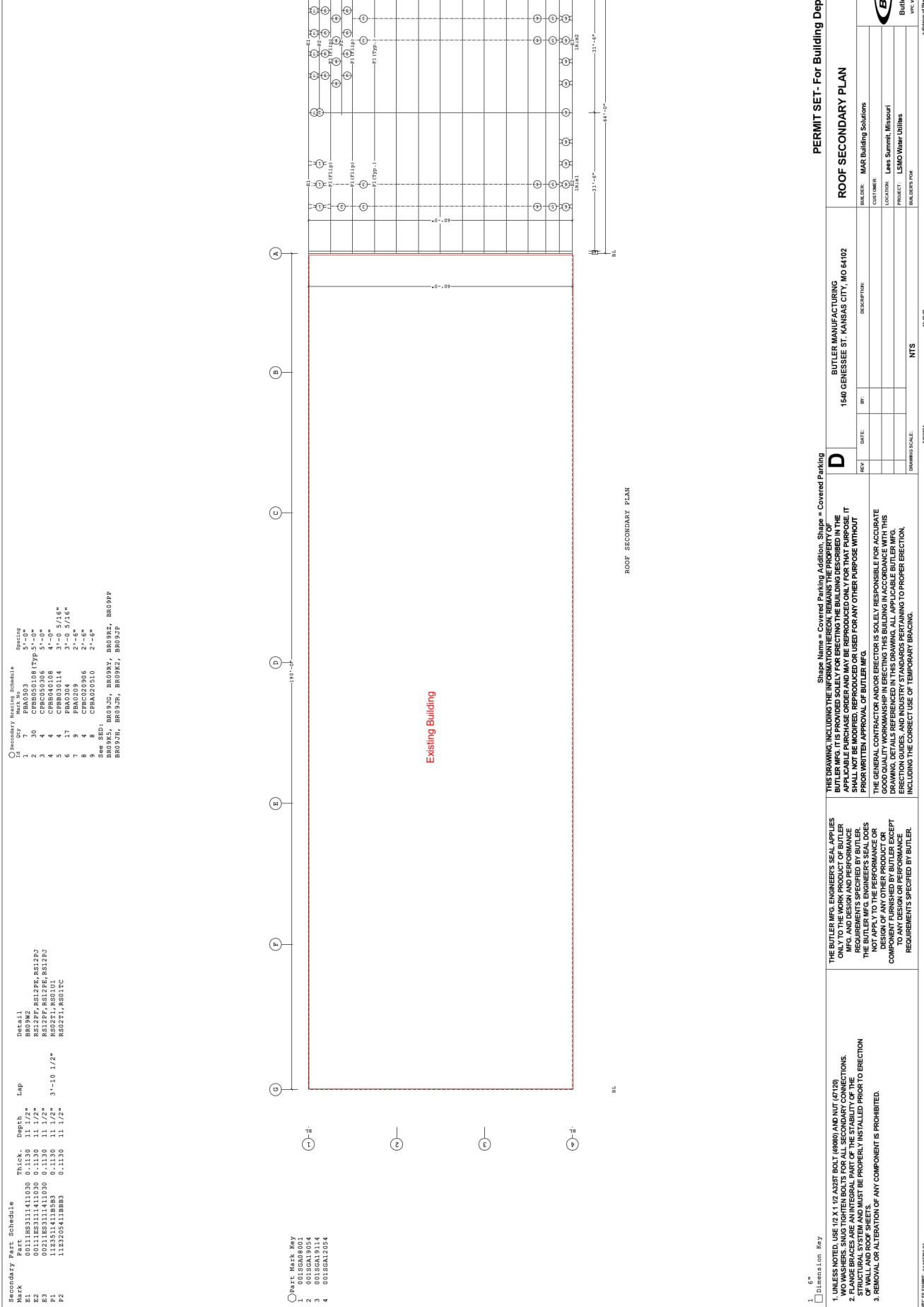
**ROOF SECONDARY PLAN**

BUILDER: MAR Building Solutions  
 CUSTOMER: Leas Summit, Missouri  
 PRODUCT: LSMO Water Utilities  
 BUILDERS JOB: BUTLERS 006

DATE: 24/07/26-02  
 DATE: 07/18/2024  
 SHEET: ETH / AMU  
 PAGE: 11



09/09/2024



THIS DRAWING, INCLUDING THE INFORMATION HEREON, REMAINS THE PROPERTY OF BUTLER MFG. ENGINEERS SEAL. NO PART OF THIS DRAWING IS TO BE REPRODUCED OR TRANSMITTED IN ANY FORM OR BY ANY MEANS, ELECTRONIC OR MECHANICAL, INCLUDING PHOTOCOPYING, RECORDING, OR BY ANY INFORMATION STORAGE AND RETRIEVAL SYSTEM, WITHOUT THE PRIOR WRITTEN APPROVAL OF BUTLER MFG. ENGINEERS SEAL. THE GENERAL CONTRACTOR AND/OR ERECTOR IS SOLELY RESPONSIBLE FOR ACCURATE GOOD QUALITY WORKMANSHIP IN ERECTING THIS BUILDING IN ACCORDANCE WITH THIS DRAWING AND ALL APPLICABLE CODES, REGULATIONS, AND INDUSTRY STANDARDS PERTAINING TO PROPER ERECTION, INCLUDING THE CORRECT USE OF TEMPORARY BRACING.





05/09/2024

### PERMIT SET - For Building Dept. Approval

<b>ROOF SECONDARY SEDPS (b)</b>	
BUILDER: MAR Building Solutions	DATE: 24/07/26-02
CUSTOMER: Lees Summit, Missouri	PROJECT: LSMO Water Utilities
PROJECT: LSMO Water Utilities	ETH: / AMU
BUILDERS JOB: BUTLER	PAGE: 13

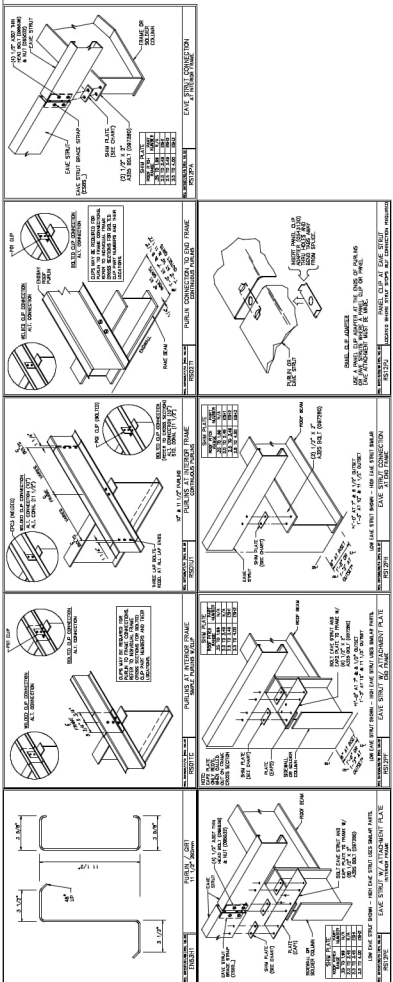
BUTLER MANUFACTURING	
1540 GENESSEE ST. KANSAS CITY, MO 64102	
REV: _____	DATE: _____
BY: _____	DESCRIPTION: _____
NTS	DRAWING SCALE: _____

THIS DRAWING, INCLUDING THE INFORMATION HEREON, REMAINS THE PROPERTY OF BUTLER. IT IS PROVIDED FOR THE USE OF THE BUILDING DEPARTMENT IN THE STATE OF MISSOURI. IT IS NOT TO BE REPRODUCED OR USED FOR ANY OTHER PURPOSE WITHOUT THE WRITTEN APPROVAL OF BUTLER MFG.

THE GENERAL CONTRACTOR AND/OR ERECTOR IS SOLELY RESPONSIBLE FOR ACCURATE GOOD QUALITY WORKMANSHIP IN ERECTING THIS BUILDING IN ACCORDANCE WITH THIS DRAWING, INCLUDING THE INFORMATION HEREON, AND INDUSTRY STANDARDS PERTAINING TO PROPER ERECTION, INCLUDING THE CORRECT USE OF TEMPORARY BRACING.

THE BUTLER MFG. ENGINEER'S SEAL APPLIES ONLY TO THE WORK PRODUCT OF BUTLER MFG. AND DESIGN AND PERFORMANCE REQUIREMENTS SPECIFIED BY BUTLER. THE BUTLER MFG. ENGINEER'S SEAL DOES NOT APPLY TO THE PERFORMANCE OR DESIGN OF ANY OTHER PRODUCT OR COMPONENT OF THE BUILDING SUBJECT TO ANY DESIGN OR PERFORMANCE REQUIREMENTS SPECIFIED BY BUTLER.

- UNLESS NOTED, USE 1/2" X 1 1/2" A325 BOLT (A985) AND NUT (A313).
- FLANGE BRACES ARE AN INTEGRAL PART OF THE STABILITY OF THE STRUCTURE. BRACES MUST BE PROPERLY INSTALLED PRIOR TO ERECTION OF WALL AND ROOF SHEET.
- REMOVAL OR ALTERATION OF ANY COMPONENT IS PROHIBITED.



05/09/2024

05/09/2024

05/09/2024

05/09/2024

05/09/2024

05/09/2024

05/09/2024

05/09/2024

05/09/2024

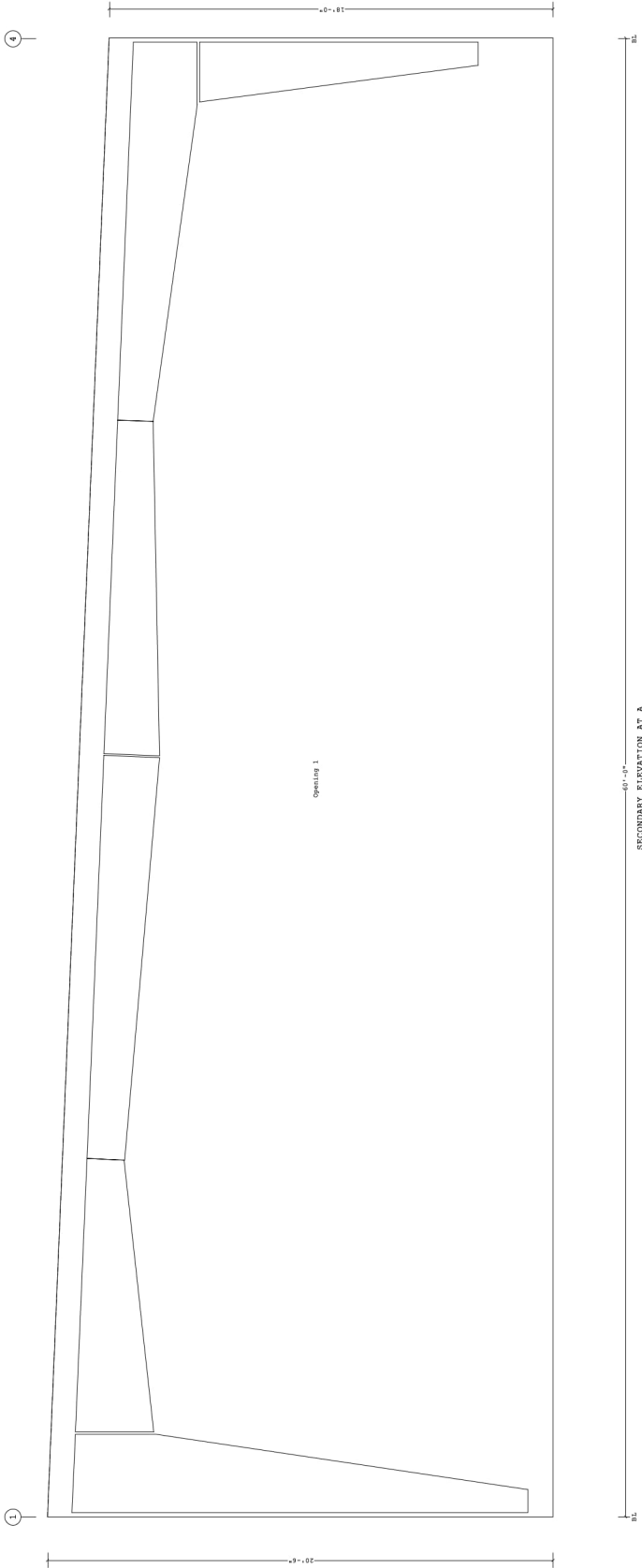
05/09/2024

05/09/2024

05/09/2024

05/09/2024

05/09/2024



SECONDARY ELEVATION AT A



**PERMIT SET - For Building Dept. Approval**

**SECONDARY ELEVATION AT A**

1. UNLESS NOTED, USE 1/2 X 1 1/2 A325 BOLT (49990) AND NUT (57130)  
 2. WASHERS, SHUG TIGHTEN BOLTS FOR ALL SECONDARY CONNECTIONS.  
 3. FLANGE BRACES ARE AN INTEGRAL PART OF THE STABILITY OF THE STRUCTURE AND MUST BE PROPERLY INSTALLED PRIOR TO ERECTION OF WALL AND ROCK SAFETY.  
 4. REMOVAL OR ALTERATION OF ANY COMPONENT IS PROHIBITED.

THIS DRAWING, INCLUDING THE INFORMATION HEREON, REMAINS THE PROPERTY OF BUTLER MFG. IT IS PROVIDED FOR ERECTING THE BUILDING SHOWN AND IN THE SHAPPE NAME ONLY. IT IS NOT TO BE REPRODUCED, COPIED, REUSED, OR IT SHALL NOT BE MODIFIED, REPRODUCED OR USED FOR ANY OTHER PURPOSE WITHOUT PRIOR WRITTEN APPROVAL OF BUTLER MFG.

THE GENERAL CONTRACTOR AND/OR ERECTOR IS SOLELY RESPONSIBLE FOR ACCURATE GOOD QUALITY WORKMANSHIP IN ERECTING THIS BUILDING IN ACCORDANCE WITH THIS DRAWING AND ALL APPLICABLE CODES, REGULATIONS, AND INDUSTRY STANDARDS PERTAINING TO PROPER ERECTION, INCLUDING THE CORRECT USE OF TEMPORARY BRACING.

THE BUTLER MFG. ENGINEER'S SEAL APPLIES ONLY TO THE WORK PRODUCT OF BUTLER MFG. AND DESIGN AND PERFORMANCE REQUIREMENTS SPECIFIED BY BUTLER. THE BUTLER MFG. ENGINEER'S SEAL DOES NOT APPLY TO THE PERFORMANCE OR DESIGN OF ANY OTHER PRODUCT OR COMPONENT OF THE BUILDING OR TO ANY DESIGN OR PERFORMANCE REQUIREMENTS SPECIFIED BY BUTLER.

Shappe Name = Covered Parking Addition, Wall = 1

**D** BUTLER MANUFACTURING  
 1540 GENESEE ST. KANSAS CITY, MO 64102

REV	DATE	BY	DESCRIPTION

BUILDER: MAR Building Solutions  
 CUSTOMER: Lees Summit, Missouri  
 LOCATION: LSMO Water Utilities  
 PRODUCT: Butler Manufacturing  
 BUILDERS JOB: VFC VERSION: 24.1.1

DATE: 24/07/26-02  
 TIME: 11:50:08  
 ETH / AMU  
 PAGE: 14

11.08.26  
 503024  
 06/09/2024  
 # Division of Building & Safety, Building Safety America, Inc.

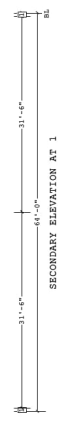
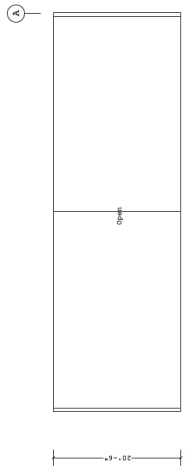


06/09/2024

06/09/2024

1 6" Dimension Key

- 1. UNLESS NOTED, USE 1/2 X 1 1/2 A325 BOLT (A985) AND NUT (7139)
- 2. NO WASHERS, SHUG TIGHTEN BOLTS FOR ALL SECONDARY CONNECTIONS.
- 3. FLANGE BRACES ARE AN INTEGRAL PART OF THE STABILITY OF THE STRUCTURE AND MUST BE PROPERLY INSTALLED PRIOR TO ERECTION OF WALL AND ROCK SHEET.
- 3. REMOVAL OR ALTERATION OF ANY COMPONENT IS PROHIBITED.



THIS DRAWING, INCLUDING THE INFORMATION HEREON, REMAINS THE PROPERTY OF BUTLER MFG. ENGINEERS SEAL. IT IS PROVIDED FOR ERECTING THE BUILDING SHOWN IN THE SHAPPE NAME ONLY. IT IS NOT TO BE REPRODUCED, COPIED, REUSED, OR OTHERWISE TRANSMITTED IN ANY FORM OR BY ANY MEANS, ELECTRONIC OR MECHANICAL, INCLUDING PHOTOCOPYING, RECORDING, OR BY ANY INFORMATION STORAGE AND RETRIEVAL SYSTEM, WITHOUT THE WRITTEN APPROVAL OF BUTLER MFG. ENGINEERS SEAL. THE GENERAL CONTRACTOR AND/OR ERECTOR IS SOLELY RESPONSIBLE FOR ACCURATE GOOD QUALITY WORKMANSHIP IN ERECTING THIS BUILDING IN ACCORDANCE WITH THIS DRAWING AND ALL APPLICABLE CODES, REGULATIONS, AND INDUSTRY STANDARDS PERTAINING TO PROPER ERECTION, INCLUDING THE CORRECT USE OF TEMPORARY BRACING.

THE BUTLER MFG. ENGINEERS SEAL APPLIES ONLY TO THE WORK PRODUCT OF BUTLER MFG. ENGINEERS SEAL AND DOES NOT APPLY TO THE PERFORMANCE OR DESIGN OF ANY OTHER PRODUCT OR COMPONENT. BUTLER MFG. ENGINEERS SEAL ACCEPTS NO LIABILITY FOR ANY DEFICIENCIES TO ANY DESIGN OR PERFORMANCE REQUIREMENTS SPECIFIED BY BUTLER.

Shappe Name = Covered Parking Addition, Wall = 2

THIS DRAWING, INCLUDING THE INFORMATION HEREON, REMAINS THE PROPERTY OF BUTLER MFG. ENGINEERS SEAL. IT IS PROVIDED FOR ERECTING THE BUILDING SHOWN IN THE SHAPPE NAME ONLY. IT IS NOT TO BE REPRODUCED, COPIED, REUSED, OR OTHERWISE TRANSMITTED IN ANY FORM OR BY ANY MEANS, ELECTRONIC OR MECHANICAL, INCLUDING PHOTOCOPYING, RECORDING, OR BY ANY INFORMATION STORAGE AND RETRIEVAL SYSTEM, WITHOUT THE WRITTEN APPROVAL OF BUTLER MFG. ENGINEERS SEAL. THE GENERAL CONTRACTOR AND/OR ERECTOR IS SOLELY RESPONSIBLE FOR ACCURATE GOOD QUALITY WORKMANSHIP IN ERECTING THIS BUILDING IN ACCORDANCE WITH THIS DRAWING AND ALL APPLICABLE CODES, REGULATIONS, AND INDUSTRY STANDARDS PERTAINING TO PROPER ERECTION, INCLUDING THE CORRECT USE OF TEMPORARY BRACING.

THE BUTLER MFG. ENGINEERS SEAL APPLIES ONLY TO THE WORK PRODUCT OF BUTLER MFG. ENGINEERS SEAL AND DOES NOT APPLY TO THE PERFORMANCE OR DESIGN OF ANY OTHER PRODUCT OR COMPONENT. BUTLER MFG. ENGINEERS SEAL ACCEPTS NO LIABILITY FOR ANY DEFICIENCIES TO ANY DESIGN OR PERFORMANCE REQUIREMENTS SPECIFIED BY BUTLER.

Shappe Name = Covered Parking Addition, Wall = 2

PERMIT SET - For Building Dept. Approval  
 SECONDARY ELEVATION AT 1

BUTLER MANUFACTURING  
 1540 GENESSEE ST. KANSAS CITY, MO 64102

BUILDER: MAR Building Solutions  
 CUSTOMER: Lees Summit, Missouri  
 LOCATION: LSMO Water Utilities  
 PRODUCT: Butler Manufacturing  
 BUILDERS PO#

DATE: 24.07.2024  
 TIME: 11:52:08  
 ETH: / AMU  
 PAGE: 15

REV: DATE: BY: DESCRIPTION: NTS

DRAWING SCALE: NTS

06/09/2024

13.08.27

4 edition of BlueScope Building North America, Inc.

VP: VERSION: 24.1.1

VP: VERSION: 24.1.1

VP: VERSION: 24.1.1

VP: VERSION: 24.1.1

VP: VERSION: 24.1.1

VP: VERSION: 24.1.1

VP: VERSION: 24.1.1

VP: VERSION: 24.1.1

VP: VERSION: 24.1.1

VP: VERSION: 24.1.1

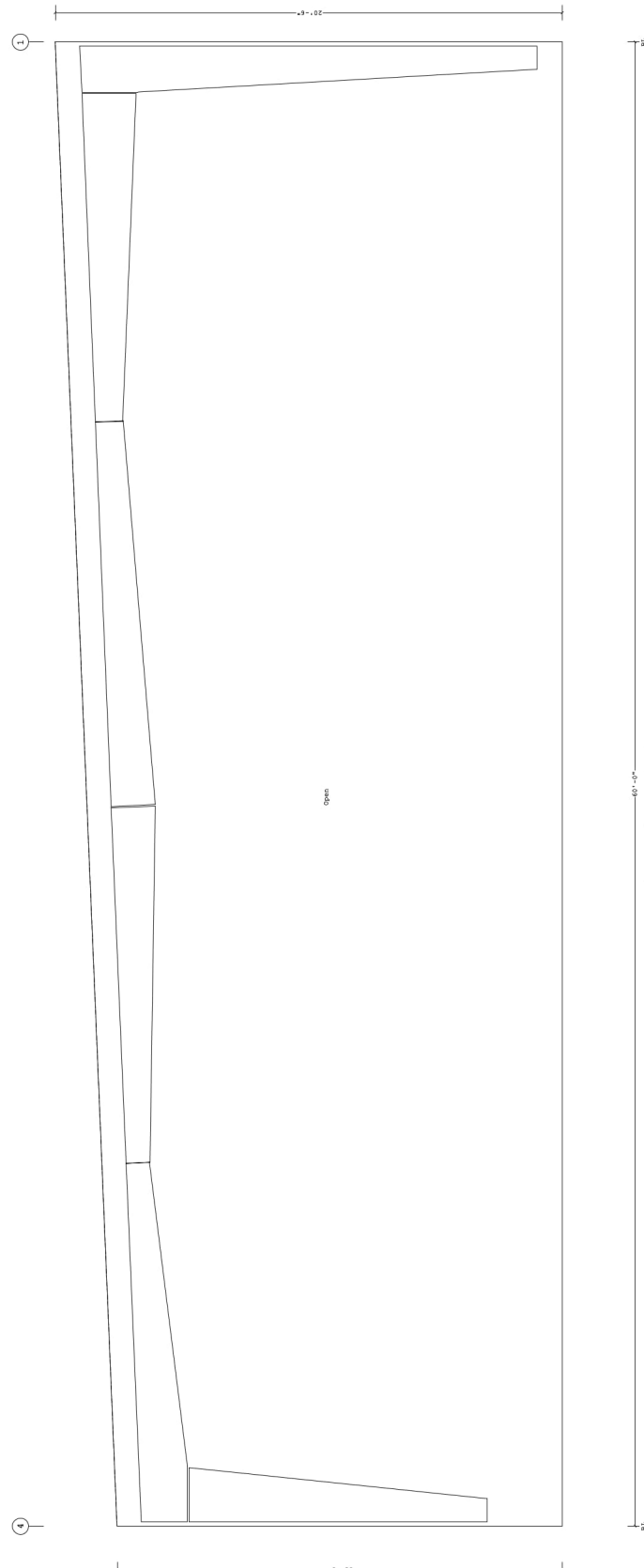
VP: VERSION: 24.1.1

VP: VERSION: 24.1.1

VP: VERSION: 24.1.1

VP: VERSION: 24.1.1

VP: VERSION: 24.1.1



WALL SECONDARY ELEVATION WALL 3

PERMIT SET - For Building Dept. Approval

WALL SECONDARY ELEVATION WALL 3

DATE	24/07/26-02
DATE	11/02/08
DATE	ETH / AMU
PAGE	16



BUILDER	MAR Building Solutions
CUSTOMER	Lees Summit, Missouri
LOCATION	LSMO Water Utilities
PRODUCT	Butler Manufacturing
BUILDERS P.O.#	VFC VERSION: 24.1.1

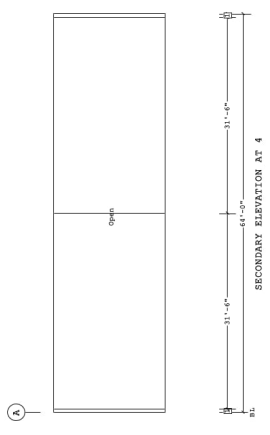
REV	DATE	BY	DESCRIPTION
D			BUTLER MANUFACTURING 1540 GENESSEE ST. KANSAS CITY, MO 64102

THIS DRAWING, INCLUDING THE INFORMATION HEREON, REMAINS THE PROPERTY OF BUTLER. IF IT IS PROVIDED FOR ERECTING THE BUILDING DESCRIBED IN THE SHAPPE NAME, IT IS TO BE USED ONLY FOR THAT BUILDING. IT SHALL NOT BE MODIFIED, REPRODUCED OR USED FOR ANY OTHER PURPOSE WITHOUT PRIOR WRITTEN APPROVAL OF BUTLER MFG.

THE GENERAL CONTRACTOR AND/OR ERECTOR IS SOLELY RESPONSIBLE FOR ACCURATE GOOD QUALITY WORKMANSHIP IN ERECTING THIS BUILDING IN ACCORDANCE WITH THIS DRAWING, BUTLER ERECTION GUIDES, AND INDUSTRY STANDARDS PERTAINING TO PROPER ERECTION, INCLUDING THE CORRECT USE OF TEMPORARY BRACING.

THE BUTLER MFG. ENGINEER'S SEAL APPLIES ONLY TO THE WORK PRODUCT OF BUTLER MFG. AND DESIGN AND PERFORMANCE REQUIREMENTS SPECIFIED BY BUTLER. THE BUTLER MFG. ENGINEER'S SEAL DOES NOT APPLY TO THE PERFORMANCE OR DESIGN OF ANY OTHER PRODUCT OR COMPONENT OF THE BUILDING SUBJECT TO ANY DESIGN OR PERFORMANCE REQUIREMENTS SPECIFIED BY BUTLER.

- UNLESS NOTED, USE 1/2 X 1/2 A325 BOLT (#9890) AND NUT (#7130)
- WASHERS, SHUG TIGHTEN BOLTS FOR ALL SECONDARY CONNECTIONS.
- FLANGE BRACES ARE AN INTEGRAL PART OF THE STABILITY OF THE STRUCTURE AND MUST BE PROPERLY INSTALLED PRIOR TO ERECTION OF WALL AND ROOF SHEET.
- REMOVAL OR ALTERATION OF ANY COMPONENT IS PROHIBITED.



**PERMIT SET - For Building Dept. Approval**

**SECONDARY ELEVATION AT 4**

**BUTLER MANUFACTURING**  
 1540 GENESSEE ST. KANSAS CITY, MO 64102

**CLIENT:** MAR Building Solutions  
**LOCATION:** Lees Summit, Missouri  
**PRODUCT:** LSMO Water Utilities  
**BUILDERS JOB:** BUTLERS JOB

**DATE:** 24/07/26-02  
**DATE:** 7/18/2024  
**DATE:** / / AMJ  
**DATE:** 17

**REV**    **DATE**    **BY**    **DESCRIPTION**

**D**                   BUTLER MANUFACTURING

**THIS DRAWING, INCLUDING THE INFORMATION HEREON, REMAINS THE PROPERTY OF BUTLER. IF IT IS PROVIDED FOR ERECTING THE BUILDING SHOWN IN THE SHAPPE NAME, IT IS TO BE USED ONLY FOR THAT BUILDING. IT SHALL NOT BE MODIFIED, REPRODUCED OR USED FOR ANY OTHER PURPOSE WITHOUT PRIOR WRITTEN APPROVAL OF BUTLER MFG.**

**THE GENERAL CONTRACTOR AND/OR ERECTOR IS SOLELY RESPONSIBLE FOR ACCURATE GOOD QUALITY WORKMANSHIP IN ERECTING THIS BUILDING IN ACCORDANCE WITH THIS DRAWING, ALL APPLICABLE CODES, AND INDUSTRY STANDARDS PERTAINING TO PROPER ERECTION, INCLUDING THE CORRECT USE OF TEMPORARY BRACING.**

**THE BUTLER MFG. ENGINEER'S SEAL APPLIES ONLY TO THE WORK PRODUCT OF BUTLER MFG. AND DESIGN AND PERFORMANCE REQUIREMENTS SPECIFIED BY BUTLER. THE BUTLER MFG. ENGINEER'S SEAL DOES NOT APPLY TO THE PERFORMANCE OR DESIGN OF ANY OTHER PRODUCT OR COMPONENT OF THE BUILDING SUBJECT TO ANY DESIGN OR PERFORMANCE REQUIREMENTS SPECIFIED BY BUTLER.**

**1. UNLESS NOTED, USE 1/2 X 1 1/2 A325 BOLT (A985) AND NUT (A7130)**  
**2. WASHERS, SHIMS/TIGHTEN BOLTS FOR ALL SECONDARY CONNECTIONS.**  
**3. FLANGE BRACES ARE AN INTEGRAL PART OF THE STABILITY OF THE STRUCTURE AND MUST BE PROPERLY INSTALLED PRIOR TO ERECTION OF WALL AND ROOF SHEET.**  
**4. REMOVAL OR ALTERATION OF ANY COMPONENT IS PROHIBITED.**

**SHAPE NAME = Covered Parking Addition, Wall = 4**

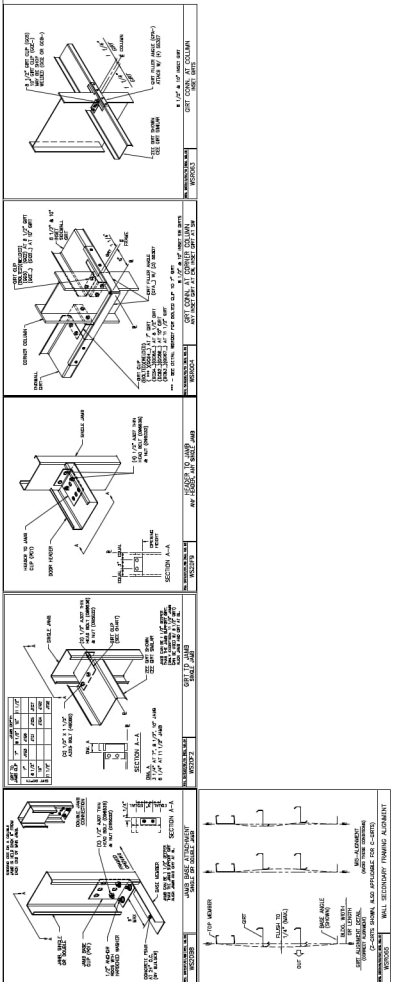
**NTS**

06/09/2024

11.08.20

4 - Division of Building Safety, Building Safety America, Inc.





THIS DRAWING, INCLUDING THE INFORMATION HEREON, REMAINS THE PROPERTY OF BUTLER. IT IS PROVIDED FOR ERECTING THE BUILDING DESCRIBED IN THE PERMIT SET. IT IS NOT TO BE REPRODUCED OR USED FOR ANY OTHER PURPOSE WITHOUT PRIOR WRITTEN APPROVAL OF BUTLER MFG.

THE GENERAL CONTRACTOR AND/OR ERECTOR IS SOLELY RESPONSIBLE FOR ACCURATE GOOD QUALITY WORKMANSHIP IN ERECTING THIS BUILDING IN ACCORDANCE WITH THIS PERMIT SET. BUTLER MFG. DOES NOT WARRANT THE ACCURACY OF THIS DRAWING OR ERECTION GUIDES, AND INDUSTRY STANDARDS PERTAINING TO PROPER ERECTION, INCLUDING THE CORRECT USE OF TEMPORARY BRACING.

THE BUTLER MFG. ENGINEER'S SEAL APPLIES ONLY TO THE WORK PRODUCT OF BUTLER MFG. AND DESIGN AND PERFORMANCE OF THE BUTLER MFG. ENGINEER'S SEAL DOES NOT APPLY TO THE PERFORMANCE OR DESIGN OF ANY OTHER PRODUCT OR COMPONENT OF THE BUILDING. BUTLER MFG. DOES NOT WARRANT THE ACCURACY OF ANY DESIGN OR PERFORMANCE REQUIREMENTS SPECIFIED BY BUTLER.

1540 GENESSEE ST. KANSAS CITY, MO 64102

REVISIONS:

REV	DATE	BY	DESCRIPTION

**D** BUTLER MANUFACTURING  
 1540 GENESSEE ST. KANSAS CITY, MO 64102

BUILDER: MAR Building Solutions  
 CUSTOMER: Lees Summit, Missouri  
 PRODUCT: LSMO Water Utilities  
 BUILDERS JOB: BUTLERS 20K

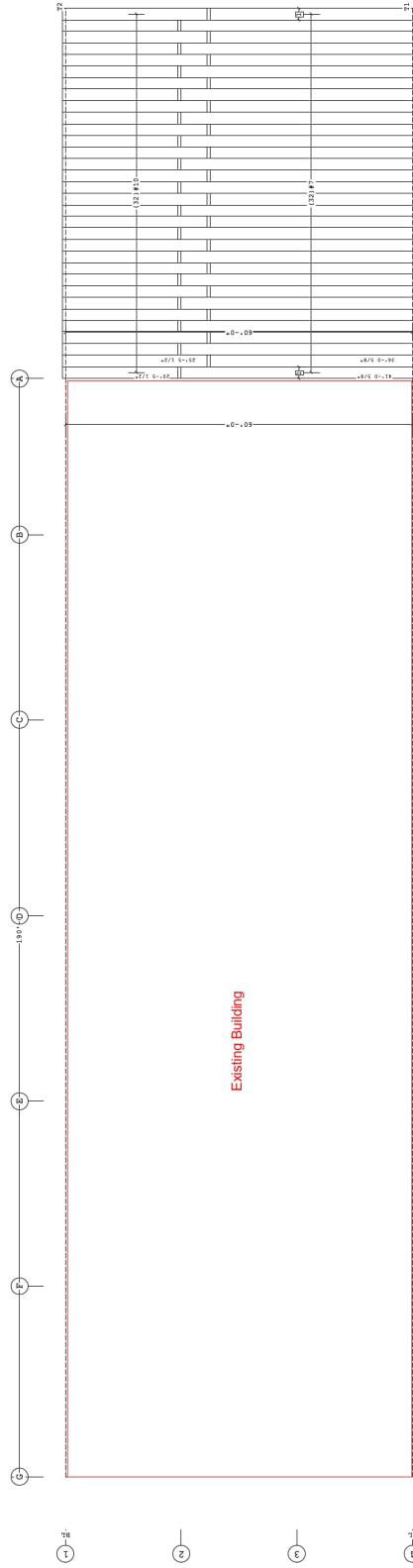
PERMIT SET - For Building Dept. Approval  
 WALL SECONDARY SED'S (b)



Covering Schedule  
 Id Qty Start Length Qty Stagger Length Qty Gap OP Fin. Color Direction  
 #7 16 41'-0 5/8" 16 36'-0 5/8" MR24 24 22 X 01 Left to Right  
 #10 16 20'-5 1/2" 16 25'-5 1/2" MR24 24 11 X 01 Left to Right  
 Oper. Code: 11=200,80  
 Finish: X=Special Request  
 Color: 01=LSMO PRINTER

Color Match Wall Color  
 Details Match Wall Color

Fin. Schedule  
 Id Part  
 T1 0630043  
 T2 0630043



ROOF COVERING PLAN

Plasograph Schedule  
 Id Details  
 T1 P-080572, P-081236, P-103223, P-104542, P-104714  
 T2 P-080572, P-104549



PERMIT SET - For Building Dept. Approval

<b>ROOF COVERING PLAN</b>	
BUILDER: MAR Building Solutions	DATE: 24/07/26-02
CUSTOMER: Leas Summit, Missouri	DATE: 07/18/2024
PROJECT: LSMO Water Utilities	DATE: 07/18/2024
BUILDERS JOB: BUTLERS JOB	DATE: 07/18/2024
	ETH / AMU
	PAGE: 20

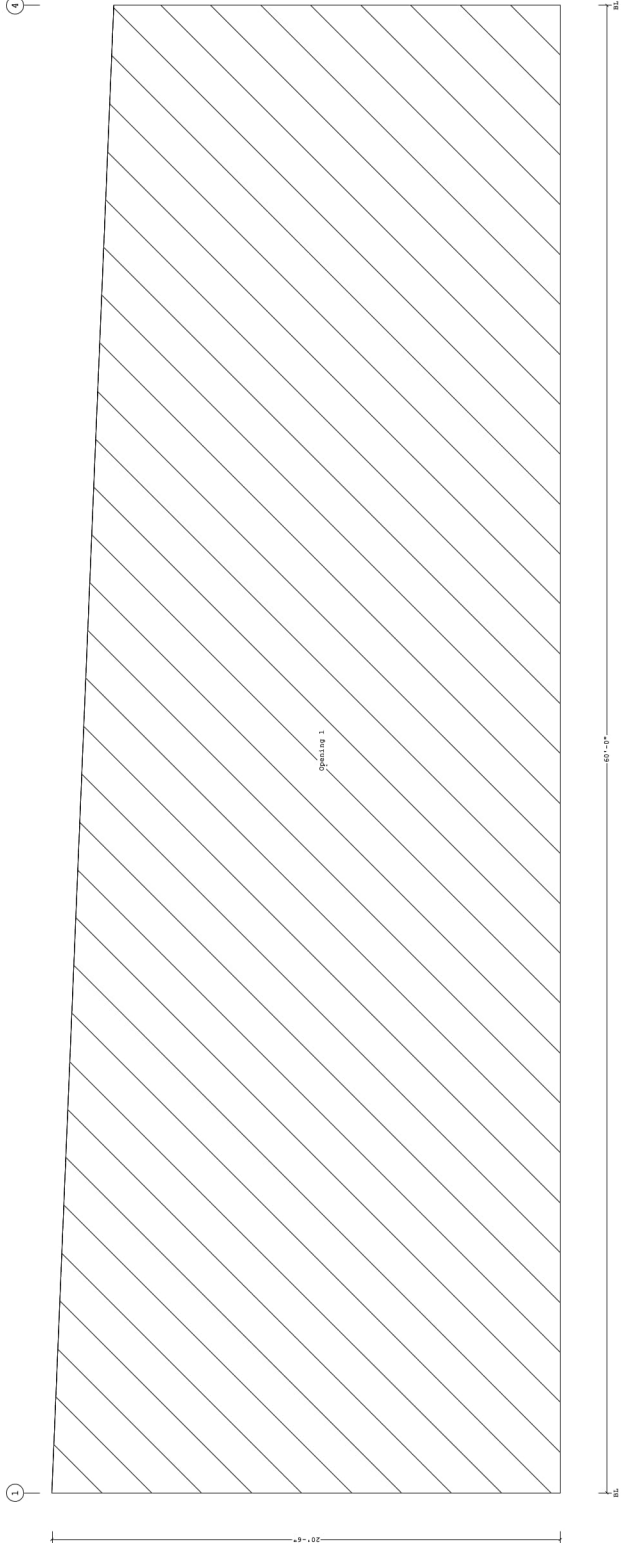
BUTLER MANUFACTURING 1540 GENESEE ST. KANSAS CITY, MO 64102	
REV	DATE
DRAWING SCALE: NTS	

Shape Name = Covered Parking

THIS DRAWING, INCLUDING THE INFORMATION HEREON, REMAINS THE PROPERTY OF BUTLER MFG. IT IS PROVIDED ONLY FOR THE USE OF THE BUILDING DEPARTMENT IN THE CITY OF KANSAS CITY, MISSOURI. IT IS NOT TO BE REPRODUCED OR USED FOR ANY OTHER PURPOSE WITHOUT PRIOR WRITTEN APPROVAL OF BUTLER MFG. THE GENERAL CONTRACTOR AND/OR ERECTOR IS SOLELY RESPONSIBLE FOR ACCURATE GOOD QUALITY WORKMANSHIP IN ERECTING THIS BUILDING IN ACCORDANCE WITH THIS DRAWING, ALL APPLICABLE CODES, AND INDUSTRY STANDARDS PERTAINING TO PROPER ERECTION, INCLUDING THE CORRECT USE OF TEMPORARY BRACING.

THE BUTLER MFG. ENGINEER'S SEAL APPLIES ONLY TO THE WORK PRODUCT OF BUTLER MFG. AND DESIGN AND PERFORMANCE REQUIREMENTS SPECIFIED BY BUTLER MFG. THE BUTLER MFG. ENGINEER'S SEAL DOES NOT APPLY TO THE PERFORMANCE OR DESIGN OF ANY OTHER PRODUCT OR COMPONENTS OF THIS PROJECT SUBJECT TO ANY DESIGN OR PERFORMANCE REQUIREMENTS SPECIFIED BY BUTLER.

1. PRE-DRILLING 1/8" DIAMETER HOLES FOR STRUCTURAL FASTENERS MAY BE REQUIRED FOR HEAVY GAGE NESTED ZEE'S AND/OR FASTENERS TO STRUCTURAL BEAMS.
2. REMOVAL OF ALL MATERIAL FROM THE STRUCTURAL SYSTEM SHALL BE COMPLETED PRIOR TO INSTALLATION OF THE COVERING.
3. DUE TO MANUFACTURING LIMITATIONS SHORT PANELS MAY REQUIRE FIELD CUTTING. SEE THE COVERING SCHEDULE FOR CUT LENGTHS.
4. SEE JOB DETAILS FOR COVERING AND TRIM FASTENER SPECIFICATION.



COVERING ELEVATION AT A

1. PRE-DRILLING 1/8" DIAMETER HOLES FOR STRUCTURAL FASTENERS MAY BE REQUIRED FOR HEAVY GAGE NESTED ZEE'S AND/OR FASTENERS TO STRUCTURAL BEAMS
2. REMOVAL OF ALL ORIGINAL PAINT AS THE STRUCTURAL SYSTEM IS INSTALLED OR A REASON WITHOUT PRIOR AUTHORIZATION IS PROHIBITED.
3. DUE TO MANUFACTURING LIMITATIONS SHORT PANELS MAY REQUIRE FIELD CUTTING. SEE THE COVERING SCHEDULE FOR CUT LENGTHS
4. SEE JOB DETAILS FOR COVERING AND TRIM FASTENER SPECIFICATION.

THE BUTLER MFG. ENGINEER'S SEAL APPLIES ONLY TO THE WORK PRODUCT OF BUTLER MFG. AND DESIGN AND PERFORMANCE OF THE BUTLER MFG. ENGINEER'S SEAL DOES NOT APPLY TO THE PERFORMANCE OR DESIGN OF ANY OTHER PRODUCT OR COMPONENTS. THE BUTLER MFG. ENGINEER'S SEAL DOES NOT APPLY TO ANY DESIGN OR PERFORMANCE REQUIREMENTS SPECIFIED BY BUTLER.

THIS DRAWING, INCLUDING THE INFORMATION HEREON, REMAINS THE PROPERTY OF BUTLER MFG. IT IS PROVIDED AS A GUIDE FOR ERECTING THE BUILDING AND IN NO MANNER SHALL IT BE CONSIDERED AS A CONTRACT. BUTLER MFG. MAKES NO WARRANTY, EITHER WRITTEN OR ORAL, REGARDING THE ACCURACY OF THIS DRAWING. IT SHALL NOT BE MODIFIED, REPRODUCED OR USED FOR ANY OTHER PURPOSE WITHOUT PRIOR WRITTEN APPROVAL OF BUTLER MFG.

THE GENERAL CONTRACTOR AND/OR ERECTOR IS SOLELY RESPONSIBLE FOR ACCURATE GOOD QUALITY WORKMANSHIP IN ERECTING THIS BUILDING IN ACCORDANCE WITH THIS DRAWING AND ALL APPLICABLE CODES, REGULATIONS, AND INDUSTRY STANDARDS PERTAINING TO PROPER ERECTION, INCLUDING THE CORRECT USE OF TEMPORARY BRACING.

REV	DATE	BY	DESCRIPTION
D			BUTLER MANUFACTURING 1540 GENESEE ST. KANSAS CITY, MO 64102

**PERMIT SET - For Building Dept. Approval**

**COVERING ELEVATION AT A**

BUILDER:	MAR Building Solutions
CUSTOMER:	Lees Summit, Missouri
LOCATION:	LSMO Water Utilities
PRODUCT:	Butler Manufacturing
BUILDERS P.O.#:	2411

DATE: 24/07/26-02  
 DATE: 7/18/2024  
 SHEET: 21 / AMU  
 PAGE: 21

06/09/2024

440 MISSOURI PROFESSIONAL ENGINEERS BOARD

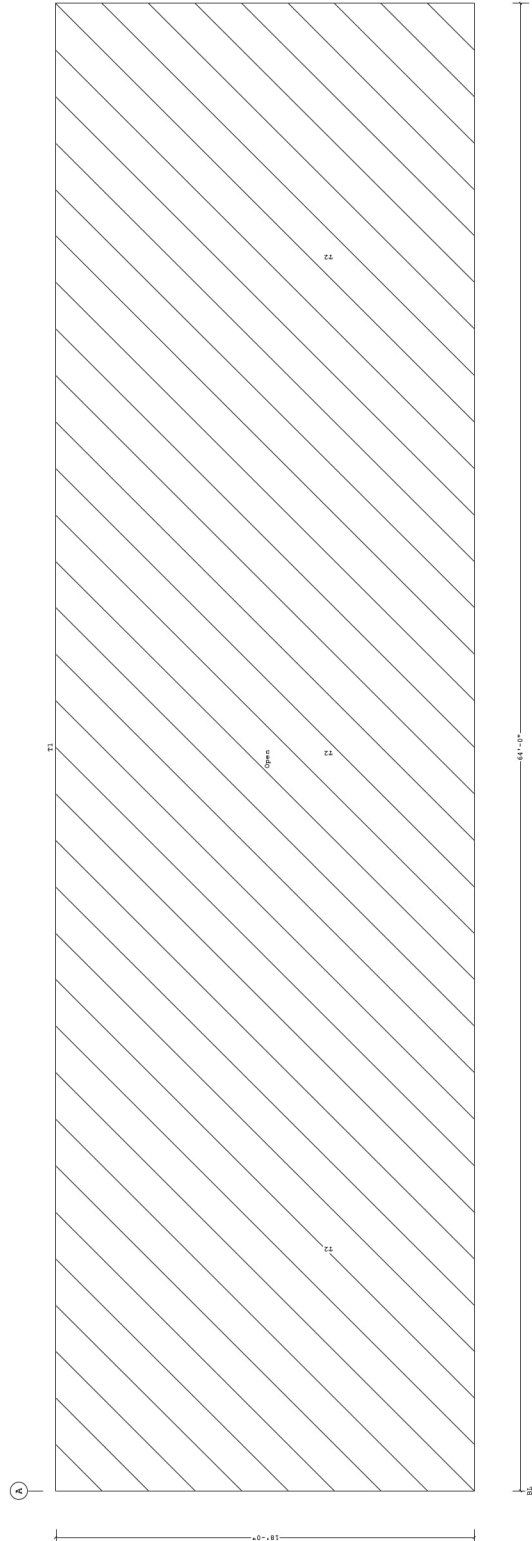
Butler Manufacturing  
 4400 Shawnee Building North America, Inc.





Part Schedule  
 Id # Part  
 T1 (3)CFR25  
 T2 0008739, (2)ACE45,4CE75, (2)CF410

Color  
 Special Color 3  
 Special Color 3  
 Details  
 EN60B1, EN60C1, EN60D1, RCB050  
 RCB087



COVERING ELEVATION AT 4

Plasograph Schedule  
 Id Details  
 T1 P-103223, P-103315, P-104714  
 T2 P-103274, P-103259, P-103278



PERMIT SET - For Building Dept. Approval

COVERING ELEVATION AT 4

REV	DATE	BY	DESCRIPTION

**D** BUTLER MANUFACTURING  
 1540 GENESSEE ST. KANSAS CITY, MO 64102

Shape Name = Covered Parking Addition, Wall = 4

THIS DRAWING, INCLUDING THE INFORMATION HEREON, REMAINS THE PROPERTY OF BUTLER MFG. CO. IT IS PROVIDED FOR THE USE OF THE BUILDING DEPARTMENT IN THE CITY OF KANSAS CITY, MISSOURI. IT IS NOT TO BE REPRODUCED OR USED FOR ANY OTHER PURPOSE WITHOUT PRIOR WRITTEN APPROVAL OF BUTLER MFG. CO.

THE GENERAL CONTRACTOR AND/OR ERECTOR IS SOLELY RESPONSIBLE FOR ACCURATE GOOD QUALITY WORKMANSHIP IN ERECTING THIS BUILDING IN ACCORDANCE WITH THIS DRAWING, ALL APPLICABLE CODES, AND INDUSTRY STANDARDS PERTAINING TO PROPER ERECTION, INCLUDING THE CORRECT USE OF TEMPORARY BRACING.

THE BUTLER MFG. ENGINEER'S SEAL APPLIES ONLY TO THE WORK PRODUCT OF BUTLER MFG. CO. ENGINEERS. IT DOES NOT APPLY TO THE PERFORMANCE OR DESIGN OF ANY OTHER PRODUCT OR SYSTEM. BUTLER MFG. ENGINEERS SEAL DOES NOT APPLY TO ANY DESIGN OR PERFORMANCE REQUIREMENTS SPECIFIED BY BUTLER.

1. PRE-DRILLING 1/8" DIAMETER HOLES FOR STRUCTURAL FASTENERS MAY BE REQUIRED FOR HEAVY GAGE NESTED ZEE'S AND/OR FASTENERS TO STRUCTURAL BEAMS.
2. THE BUTLER MFG. ENGINEER'S SEAL APPLIES TO THE FASTENING SYSTEM REMOVAL OR A TREATMENT WITHOUT PRIOR AUTHORIZATION IS PROHIBITED.
3. DUE TO MANUFACTURING LIMITATIONS SHORT PANELS MAY REQUIRE FIELD CUTTING. SEE THE COVERING SCHEDULE FOR CUT LENGTHS.
4. SEE JOB DETAILS FOR COVERING AND TRIM FASTENER SPECIFICATION.

DATE: 24/07/26-02  
 DATE: 07/18/2024  
 DATE: 07/18/2024  
 ETH / AMU  
 PAGE: 24

Butler Manufacturing  
 VFC VERSION: 24.1.1  
 BUILDERS FOR



05/09/2024

### PERMIT SET - For Building Dept. Approval

#### COVERING & TRIM SED'S

BUILDER: MAR Building Solutions  
 CUSTOMER: Lees Summit, Missouri  
 LOCATION: LSMO Water Utilities  
 PROJECT: LSMO Water Utilities  
 BUILDERS JOB: BUTLERS FOR

DATE: 24/07/26-02  
 DATE: 11/02/24  
 DATE: 11/02/24  
 DATE: 11/02/24

REV: 1  
 DATE: 11/02/24  
 BY: [Signature]  
 DESCRIPTION: [Blank]

REV: 2  
 DATE: 11/02/24  
 BY: [Signature]  
 DESCRIPTION: [Blank]

REV: 3  
 DATE: 11/02/24  
 BY: [Signature]  
 DESCRIPTION: [Blank]

REV: 4  
 DATE: 11/02/24  
 BY: [Signature]  
 DESCRIPTION: [Blank]

REV: 5  
 DATE: 11/02/24  
 BY: [Signature]  
 DESCRIPTION: [Blank]

REV: 6  
 DATE: 11/02/24  
 BY: [Signature]  
 DESCRIPTION: [Blank]

REV: 7  
 DATE: 11/02/24  
 BY: [Signature]  
 DESCRIPTION: [Blank]

REV: 8  
 DATE: 11/02/24  
 BY: [Signature]  
 DESCRIPTION: [Blank]

REV: 9  
 DATE: 11/02/24  
 BY: [Signature]  
 DESCRIPTION: [Blank]

REV: 10  
 DATE: 11/02/24  
 BY: [Signature]  
 DESCRIPTION: [Blank]

REV: 11  
 DATE: 11/02/24  
 BY: [Signature]  
 DESCRIPTION: [Blank]

REV: 12  
 DATE: 11/02/24  
 BY: [Signature]  
 DESCRIPTION: [Blank]

REV: 13  
 DATE: 11/02/24  
 BY: [Signature]  
 DESCRIPTION: [Blank]

REV: 14  
 DATE: 11/02/24  
 BY: [Signature]  
 DESCRIPTION: [Blank]

REV: 15  
 DATE: 11/02/24  
 BY: [Signature]  
 DESCRIPTION: [Blank]

REV: 16  
 DATE: 11/02/24  
 BY: [Signature]  
 DESCRIPTION: [Blank]

REV: 17  
 DATE: 11/02/24  
 BY: [Signature]  
 DESCRIPTION: [Blank]

REV: 18  
 DATE: 11/02/24  
 BY: [Signature]  
 DESCRIPTION: [Blank]

REV: 19  
 DATE: 11/02/24  
 BY: [Signature]  
 DESCRIPTION: [Blank]

REV: 20  
 DATE: 11/02/24  
 BY: [Signature]  
 DESCRIPTION: [Blank]

REV: 21  
 DATE: 11/02/24  
 BY: [Signature]  
 DESCRIPTION: [Blank]

REV: 22  
 DATE: 11/02/24  
 BY: [Signature]  
 DESCRIPTION: [Blank]

REV: 23  
 DATE: 11/02/24  
 BY: [Signature]  
 DESCRIPTION: [Blank]

REV: 24  
 DATE: 11/02/24  
 BY: [Signature]  
 DESCRIPTION: [Blank]

REV: 25  
 DATE: 11/02/24  
 BY: [Signature]  
 DESCRIPTION: [Blank]

REV: 26  
 DATE: 11/02/24  
 BY: [Signature]  
 DESCRIPTION: [Blank]

REV: 27  
 DATE: 11/02/24  
 BY: [Signature]  
 DESCRIPTION: [Blank]

REV: 28  
 DATE: 11/02/24  
 BY: [Signature]  
 DESCRIPTION: [Blank]

REV: 29  
 DATE: 11/02/24  
 BY: [Signature]  
 DESCRIPTION: [Blank]

REV: 30  
 DATE: 11/02/24  
 BY: [Signature]  
 DESCRIPTION: [Blank]

REV: 31  
 DATE: 11/02/24  
 BY: [Signature]  
 DESCRIPTION: [Blank]

REV: 32  
 DATE: 11/02/24  
 BY: [Signature]  
 DESCRIPTION: [Blank]

REV: 33  
 DATE: 11/02/24  
 BY: [Signature]  
 DESCRIPTION: [Blank]

REV: 34  
 DATE: 11/02/24  
 BY: [Signature]  
 DESCRIPTION: [Blank]

REV: 35  
 DATE: 11/02/24  
 BY: [Signature]  
 DESCRIPTION: [Blank]

REV: 36  
 DATE: 11/02/24  
 BY: [Signature]  
 DESCRIPTION: [Blank]

REV: 37  
 DATE: 11/02/24  
 BY: [Signature]  
 DESCRIPTION: [Blank]

DATE: 24/07/26-02  
 DATE: 11/02/24  
 DATE: 11/02/24  
 DATE: 11/02/24

BUILDER: MAR Building Solutions  
 CUSTOMER: Lees Summit, Missouri  
 LOCATION: LSMO Water Utilities  
 PROJECT: LSMO Water Utilities  
 BUILDERS JOB: BUTLERS FOR

DATE: 24/07/26-02  
 DATE: 11/02/24  
 DATE: 11/02/24  
 DATE: 11/02/24

REV: 1  
 DATE: 11/02/24  
 BY: [Signature]  
 DESCRIPTION: [Blank]

REV: 2  
 DATE: 11/02/24  
 BY: [Signature]  
 DESCRIPTION: [Blank]

REV: 3  
 DATE: 11/02/24  
 BY: [Signature]  
 DESCRIPTION: [Blank]

REV: 4  
 DATE: 11/02/24  
 BY: [Signature]  
 DESCRIPTION: [Blank]

REV: 5  
 DATE: 11/02/24  
 BY: [Signature]  
 DESCRIPTION: [Blank]

REV: 6  
 DATE: 11/02/24  
 BY: [Signature]  
 DESCRIPTION: [Blank]

REV: 7  
 DATE: 11/02/24  
 BY: [Signature]  
 DESCRIPTION: [Blank]

REV: 8  
 DATE: 11/02/24  
 BY: [Signature]  
 DESCRIPTION: [Blank]

REV: 9  
 DATE: 11/02/24  
 BY: [Signature]  
 DESCRIPTION: [Blank]

REV: 10  
 DATE: 11/02/24  
 BY: [Signature]  
 DESCRIPTION: [Blank]

REV: 11  
 DATE: 11/02/24  
 BY: [Signature]  
 DESCRIPTION: [Blank]

REV: 12  
 DATE: 11/02/24  
 BY: [Signature]  
 DESCRIPTION: [Blank]

REV: 13  
 DATE: 11/02/24  
 BY: [Signature]  
 DESCRIPTION: [Blank]

REV: 14  
 DATE: 11/02/24  
 BY: [Signature]  
 DESCRIPTION: [Blank]

REV: 15  
 DATE: 11/02/24  
 BY: [Signature]  
 DESCRIPTION: [Blank]

REV: 16  
 DATE: 11/02/24  
 BY: [Signature]  
 DESCRIPTION: [Blank]

REV: 17  
 DATE: 11/02/24  
 BY: [Signature]  
 DESCRIPTION: [Blank]

REV: 18  
 DATE: 11/02/24  
 BY: [Signature]  
 DESCRIPTION: [Blank]

REV: 19  
 DATE: 11/02/24  
 BY: [Signature]  
 DESCRIPTION: [Blank]

REV: 20  
 DATE: 11/02/24  
 BY: [Signature]  
 DESCRIPTION: [Blank]

REV: 21  
 DATE: 11/02/24  
 BY: [Signature]  
 DESCRIPTION: [Blank]

REV: 22  
 DATE: 11/02/24  
 BY: [Signature]  
 DESCRIPTION: [Blank]

REV: 23  
 DATE: 11/02/24  
 BY: [Signature]  
 DESCRIPTION: [Blank]

REV: 24  
 DATE: 11/02/24  
 BY: [Signature]  
 DESCRIPTION: [Blank]

REV: 25  
 DATE: 11/02/24  
 BY: [Signature]  
 DESCRIPTION: [Blank]

REV: 26  
 DATE: 11/02/24  
 BY: [Signature]  
 DESCRIPTION: [Blank]

REV: 27  
 DATE: 11/02/24  
 BY: [Signature]  
 DESCRIPTION: [Blank]

REV: 28  
 DATE: 11/02/24  
 BY: [Signature]  
 DESCRIPTION: [Blank]

REV: 29  
 DATE: 11/02/24  
 BY: [Signature]  
 DESCRIPTION: [Blank]

REV: 30  
 DATE: 11/02/24  
 BY: [Signature]  
 DESCRIPTION: [Blank]

REV: 31  
 DATE: 11/02/24  
 BY: [Signature]  
 DESCRIPTION: [Blank]

REV: 32  
 DATE: 11/02/24  
 BY: [Signature]  
 DESCRIPTION: [Blank]

REV: 33  
 DATE: 11/02/24  
 BY: [Signature]  
 DESCRIPTION: [Blank]

REV: 34  
 DATE: 11/02/24  
 BY: [Signature]  
 DESCRIPTION: [Blank]

REV: 35  
 DATE: 11/02/24  
 BY: [Signature]  
 DESCRIPTION: [Blank]

REV: 36  
 DATE: 11/02/24  
 BY: [Signature]  
 DESCRIPTION: [Blank]

REV: 37  
 DATE: 11/02/24  
 BY: [Signature]  
 DESCRIPTION: [Blank]

THIS DRAWING, INCLUDING THE INFORMATION HEREON, REMAINS THE PROPERTY OF BUTLER MFG. ENGINEERS SEAL. IT IS PROVIDED ONLY FOR THE USE OF THE CONTRACTOR IN THE CONSTRUCTION OF THE PROJECT DESCRIBED HEREON. IT IS NOT TO BE REPRODUCED, COPIED, REPRODUCED OR USED FOR ANY OTHER PURPOSE WITHOUT THE WRITTEN APPROVAL OF BUTLER MFG. ENGINEERS SEAL. THE GENERAL CONTRACTOR AND/OR ERECTOR IS SOLELY RESPONSIBLE FOR ACCURATE GOOD QUALITY WORKMANSHIP IN ERECTING THIS BUILDING IN ACCORDANCE WITH THIS DRAWING AND ALL APPLICABLE CODES, REGULATIONS, AND INDUSTRY STANDARDS PERTAINING TO PROPER ERECTION, INCLUDING THE CORRECT USE OF TEMPORARY BRACING.

THE BUTLER MFG. ENGINEERS SEAL APPLIES ONLY TO THE WORK PRODUCT OF BUTLER MFG. ENGINEERS SEAL AND DOES NOT APPLY TO THE PERFORMANCE OR DESIGN OF ANY OTHER PRODUCT OR COMPONENT OF THE PROJECT. BUTLER MFG. ENGINEERS SEAL DOES NOT WARRANT THE PERFORMANCE OR DESIGN OF ANY OTHER PRODUCT OR COMPONENT OF THE PROJECT. BUTLER MFG. ENGINEERS SEAL DOES NOT WARRANT THE PERFORMANCE OR DESIGN OF ANY OTHER PRODUCT OR COMPONENT OF THE PROJECT.

THIS DRAWING, INCLUDING THE INFORMATION HEREON, REMAINS THE PROPERTY OF BUTLER MFG. ENGINEERS SEAL. IT IS PROVIDED ONLY FOR THE USE OF THE CONTRACTOR IN THE CONSTRUCTION OF THE PROJECT DESCRIBED HEREON. IT IS NOT TO BE REPRODUCED, COPIED, REPRODUCED OR USED FOR ANY OTHER PURPOSE WITHOUT THE WRITTEN APPROVAL OF BUTLER MFG. ENGINEERS SEAL. THE GENERAL CONTRACTOR AND/OR ERECTOR IS SOLELY RESPONSIBLE FOR ACCURATE GOOD QUALITY WORKMANSHIP IN ERECTING THIS BUILDING IN ACCORDANCE WITH THIS DRAWING AND ALL APPLICABLE CODES, REGULATIONS, AND INDUSTRY STANDARDS PERTAINING TO PROPER ERECTION, INCLUDING THE CORRECT USE OF TEMPORARY BRACING.

THE BUTLER MFG. ENGINEERS SEAL APPLIES ONLY TO THE WORK PRODUCT OF BUTLER MFG. ENGINEERS SEAL AND DOES NOT APPLY TO THE PERFORMANCE OR DESIGN OF ANY OTHER PRODUCT OR COMPONENT OF THE PROJECT. BUTLER MFG. ENGINEERS SEAL DOES NOT WARRANT THE PERFORMANCE OR DESIGN OF ANY OTHER PRODUCT OR COMPONENT OF THE PROJECT. BUTLER MFG. ENGINEERS SEAL DOES NOT WARRANT THE PERFORMANCE OR DESIGN OF ANY OTHER PRODUCT OR COMPONENT OF THE PROJECT.

THIS DRAWING, INCLUDING THE INFORMATION HEREON, REMAINS THE PROPERTY OF BUTLER MFG. ENGINEERS SEAL. IT IS PROVIDED ONLY FOR THE USE OF THE CONTRACTOR IN THE CONSTRUCTION OF THE PROJECT DESCRIBED HEREON. IT IS NOT TO BE REPRODUCED, COPIED, REPRODUCED OR USED FOR ANY OTHER PURPOSE WITHOUT THE WRITTEN APPROVAL OF BUTLER MFG. ENGINEERS SEAL. THE GENERAL CONTRACTOR AND/OR ERECTOR IS SOLELY RESPONSIBLE FOR ACCURATE GOOD QUALITY WORKMANSHIP IN ERECTING THIS BUILDING IN ACCORDANCE WITH THIS DRAWING AND ALL APPLICABLE CODES, REGULATIONS, AND INDUSTRY STANDARDS PERTAINING TO PROPER ERECTION, INCLUDING THE CORRECT USE OF TEMPORARY BRACING.

