

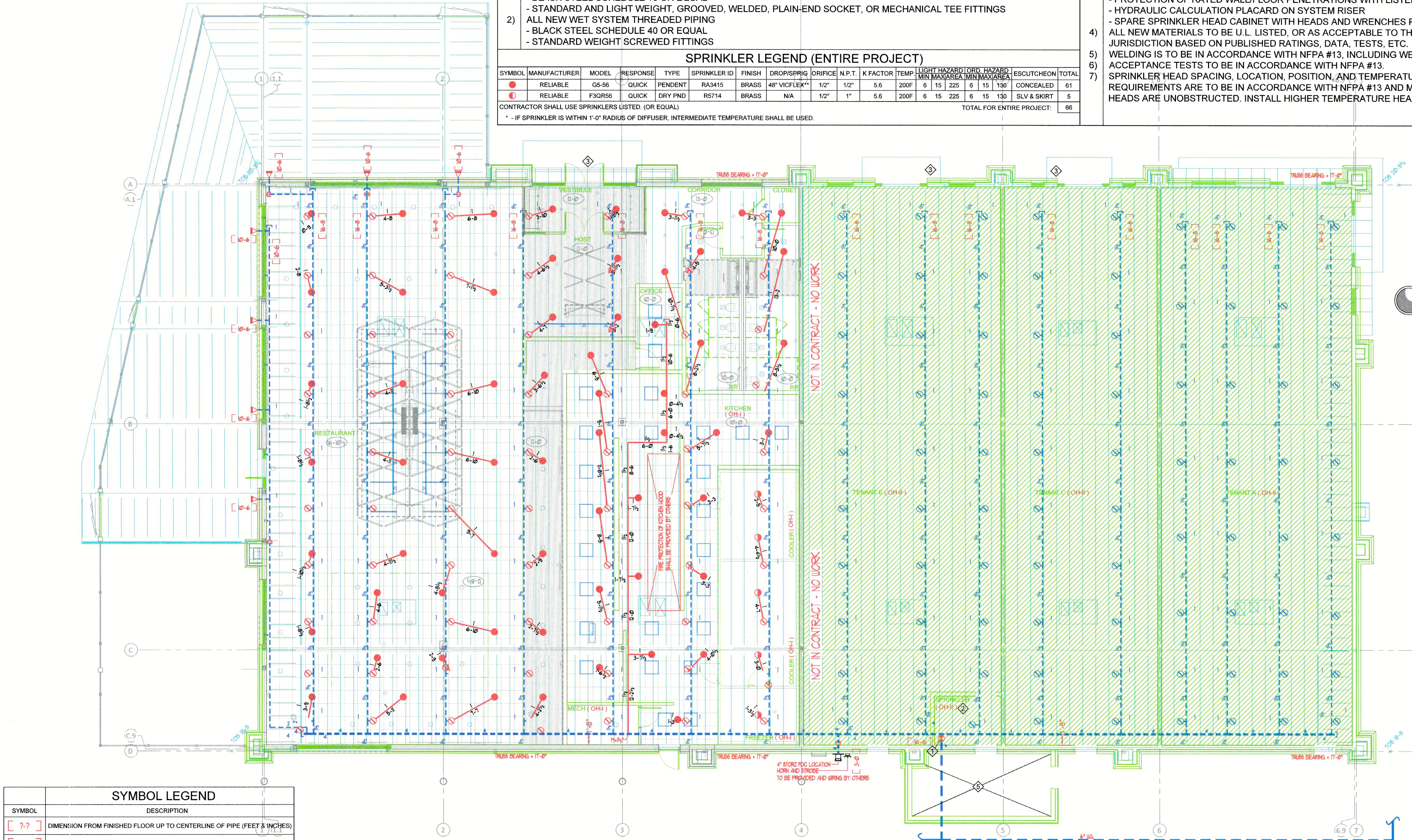
PLAN NOTES	
1	SEE SHEET 1 FOR U.G. PIPING & RISER DETAIL.
2	IT IS THE RESPONSIBILITY OF OTHERS TO PROTECT ELECTRICAL EQUIPMENT FROM SPRINKLER SPRAY, ESPECIALLY THIS AREA.
3	OUTSIDE NON COMBUSTIBLE NOT USED FOR STORAGE. NO SPRINKLERS REQUIRED.
4	AUXILIARY DRAIN. (LOCATE IN FIELD)
5	OUTSIDE AND OPEN TO SKY. NO SPRINKLERS REQUIRED.

PROJECT NOTES	
1)	CODES: IBC-2018, NFPA 13-2016
2)	APPROVAL: CITY OF LEES SUMMIT
3)	CONSTRUCTION TYPE: EXISTING WOOD CONSTRUCTION TYPE VB
4)	SCOPE OF WORK: AEGIS FIRE PROTECTION'S IS TO PROVIDE FIRE PROTECTION THROUGHOUT THE RENOVATED AREA PER NFPA 13-2016 AND CONTRACT DOCUMENTS. SPRINKLERS HAVE BEEN ADDED AT A 1:1 RATIO AND NO HYDRAULIC CALCULATIONS REQUIRED.
5)	EXISTING RISER TO REMAIN UNCHANGED INCLUDING BACKFLOW PREVENTER, CONTROL VALVES, FDC, ETC.
6)	ALL AREAS ARE CLASSIFIED LIGHT HAZARD, UNLESS NOTED OTHERWISE
7)	IDENTIFICATION AND LABELING OF PIPING TO BE BY OTHERS
8)	PROTECTION OF PIPING WHERE SUBJECT TO EARTHQUAKES IS NOT REQUIRED.

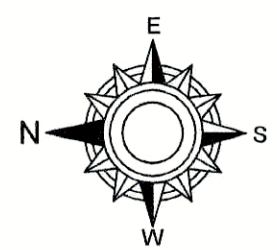
PIPE AND FITTINGS	
1)	ALL NEW WET SYSTEM GROOVED PIPING
	- BLACK STEEL SCHEDULE 10 OR EQUAL
	- STANDARD AND LIGHT WEIGHT, GROOVED, WELDED, PLAIN-END SOCKET, OR MECHANICAL TEE FITTINGS
2)	ALL NEW WET SYSTEM THREADED PIPING
	- BLACK STEEL SCHEDULE 40 OR EQUAL
	- STANDARD WEIGHT SCREWED FITTINGS

SPRINKLER LEGEND (ENTIRE PROJECT)														
SYMBOL	MANUFACTURER	MODEL	RESPONSE	TYPE	SPRINKLER ID	FINISH	DROP/SPRIG	ORIFICE	N.P.T.	K FACTOR	TEMP.	LIGHT HAZARD	ORD. HAZARD	ESCAPES/CEILING
●	RELIABLE	G5-56	QUICK	PENDENT	RA3415	BRASS	48" VIOFLEX**	1/2"	1/2"	5.6	200F	6	15	225
○	RELIABLE	F3QR56	QUICK	DRY PND	R5714	BRASS	N/A	1/2"	1"	5.6	200F	6	15	130
CONTRACTOR SHALL USE SPRINKLERS LISTED (OR EQUAL)														TOTAL
* - IF SPRINKLER IS WITHIN 1'-0" RADIUS OF DIFFUSER, INTERMEDIATE TEMPERATURE SHALL BE USED.														61
TOTAL FOR ENTIRE PROJECT:														5

GENERAL NOTES	
1)	SPRINKLER SYSTEMS ARE TO BE MAINTAINED IN ACCORDANCE WITH NFPA #25. THIS IS OWNER'S RESPONSIBILITY UPON CONTRACTOR'S SUBSTANTIAL COMPLETION.
2)	ALL ALARM AND SUPERVISORY SWITCHES ARE TO BE MONITORED BY A REMOTE MONITORING STATION. (BY OTHERS)
3)	INSTALLATION TO BE IN ACCORDANCE WITH MINIMUM REQUIREMENTS OF NFPA #13. WHETHER INDICATED ON THE DRAWINGS OR NOT, THE FOLLOWING IS TO BE PROVIDED:
	- SUPERVISION OF VALVES CONTROLLING WATER SUPPLIES
	- LOCAL AUDIBLE ALARM
	- QUICK RESPONSE SPRINKLERS IN ALL LIGHT HAZARD OCCUPANCIES
	- ADEQUATE SUPPORT OF ALL PIPE AND COMPONENTS
	- INSPECTOR'S TEST CONNECTION FOR EACH SYSTEM
	- PROVISION FOR FLUSHING AND DRAINING OF ALL NEW SPRINKLER SYSTEM PIPING
	- PROTECTION OF PIPING WHERE SUBJECT TO FREEZING. THIS IS OWNER'S RESPONSIBILITY UPON CONTRACTOR'S SUBSTANTIAL COMPLETION
	- PROTECTION OF RATED WALL/FLOOR PENETRATIONS WITH LISTED FIRE-STOP ASSEMBLIES
	- HYDRAULIC CALCULATION PLACARD ON SYSTEM RISER
	- SPARE SPRINKLER HEAD CABINET WITH HEADS AND WRENCHES PER NFPA #13
4)	ALL NEW MATERIALS TO BE U.L. LISTED, OR AS ACCEPTABLE TO THE AUTHORITY HAVING JURISDICTION BASED ON PUBLISHED RATINGS, DATA, TESTS, ETC.
5)	WELDING IS TO BE IN ACCORDANCE WITH NFPA #13, INCLUDING WELDER CERTIFICATION AND IDENTIFICATION STAMP.
6)	ACCEPTANCE TESTS TO BE IN ACCORDANCE WITH NFPA #13.
7)	SPRINKLER HEAD SPACING, LOCATION, POSITION, AND TEMPERATURE, AS WELL AS MINIMUM GPM AND PSI REQUIREMENTS ARE TO BE IN ACCORDANCE WITH NFPA #13 AND MANUFACTURER'S DATA. VERIFY ALL SPRINKLER HEADS ARE UNOBSTRUCTED. INSTALL HIGHER TEMPERATURE HEADS NEAR HEAT SOURCES AS REQUIRED PER NFPA #13

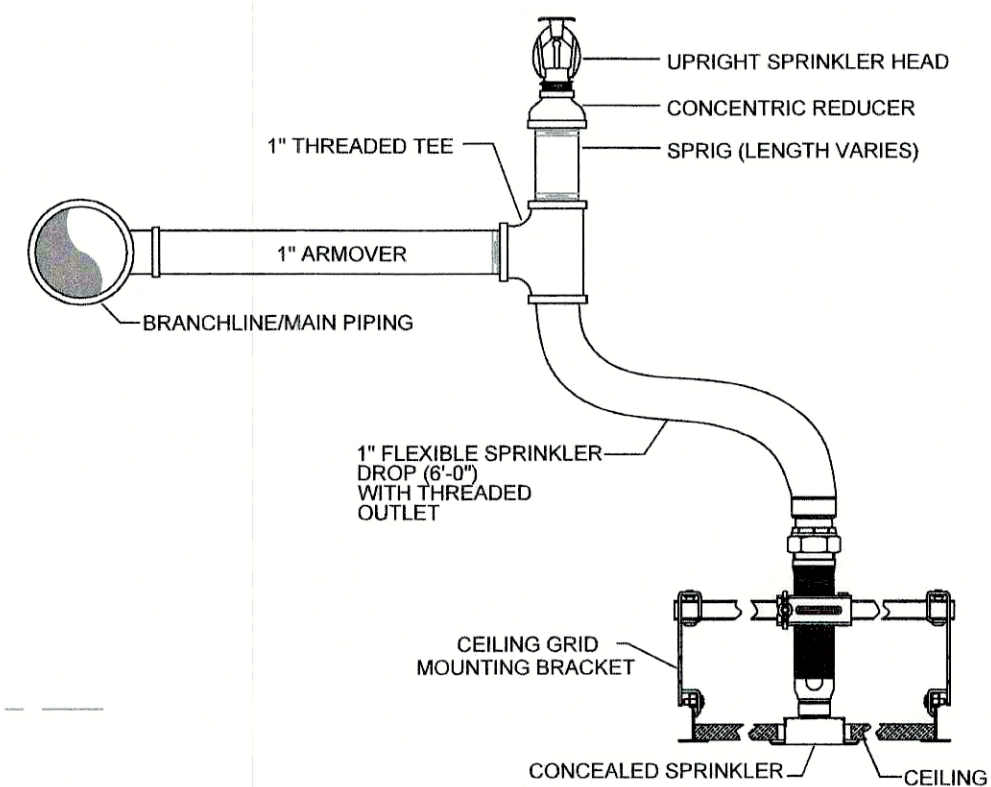


SYMBOL LEGEND	
SYMBOL	DESCRIPTION
[ ?-? ]	DIMENSION FROM FINISHED FLOOR UP TO CENTERLINE OF PIPE (FEET & INCHES)
[ ? Bts ]	DIMENSION FROM BOTTOM OF DECK, DOWN TO CENTERLINE OF PIPE (INCHES)
(X-X)	CEILING HEIGHT
(OH-I)	ORDINARY HAZARD GROUP I OCCUPANCY CLASSIFICATION
---	EXISTING PIPING
---	NEW PIPING AND FLEXIBLE SPRINKLER CONNECTION
○	EXISTING UPRIGHT SPRINKLER TO REMAIN. TOTAL SPRINKLERS - 70
△	EXISTING DRY SIDEWALL SPRINKLER TO REMAIN. TOTAL SPRINKLERS - 7
M-7"	NEW 1-1/2" MECHANICAL TEE



FIRE SPRINKLER PIPING PLAN OF 30 HOP

SCALE 1/8"=1'-0"



SPRINKLER INSTALLATION DETAIL  
N.T.S.

POSITIONING OF SPRINKLERS TO AVOID OBSTRUCTIONS TO DISCHARGE (SSU/SSP)	
DISTANCE FROM SPRINKLERS TO SIDE OF OBSTRUCTION (A)	MAXIMUM ALLOWABLE DISTANCE OF DEFLECTOR ABOVE BOTTOM OF OBSTRUCTION (IN.) (B)
LESS THAN 1 FT	0"
ONE FT TO LESS THAN 1 FT 6 IN.	2-1/2"
1 FT 6 IN. TO LESS THAN 2 FT	3-1/2"
2 FT TO LESS THAN 2 FT 6 IN.	5-1/2"
2 FT 6 IN. TO LESS THAN 3 FT	7-1/2"
3 FT TO LESS THAN 3 FT 6 IN.	9-1/2"
3 FT 6 IN. TO LESS THAN 4 FT	12
4 FT TO LESS THAN 4 FT 6 IN.	14
4 FT 6 IN. TO LESS THAN 5 FT	16-1/2"
5 FT AND GREATER	18

POSITIONING OF SPRINKLERS TO AVOID OBSTRUCTIONS TO DISCHARGE (SSU/SSP)

FLOW TEST INFORMATION	
- DATE:	05/22/2023
- BY:	AEGIS FIRE PROTECTION
- STATIC:	77 PSI
- RESIDUAL:	58 PSI
- FLOW:	836 GPM

NORTH

DATE

REVISIONS

Aegis Fire Protection, LLC

Corporate: 11936 W. 119th St. #262 Overland Park, KS 66213

Phone: 913-825-0343 Fax: 913-322-4475

JOB NO.  
DPC-19284-141

JOB NAME:  
30HOP SOWP  
TENANT FINISH  
1020 NW PRYOR ROAD  
LEES SUMMIT, MO 64089

SYSTEM TYPE: XXX  
TOTAL HEADS: XXX

AHJ: CITY & OWNER  
SCALE: SEE PLAN  
DESIGNED BY: BD  
CHECKED BY: KS  
DATE: 08/01/2024

SHEET NO.  
FP1  
1 OF 1