

Existing Signage

200'

25'

INTERIOR LOADING

816-569-9277

1-800-555-5555

West Elevation

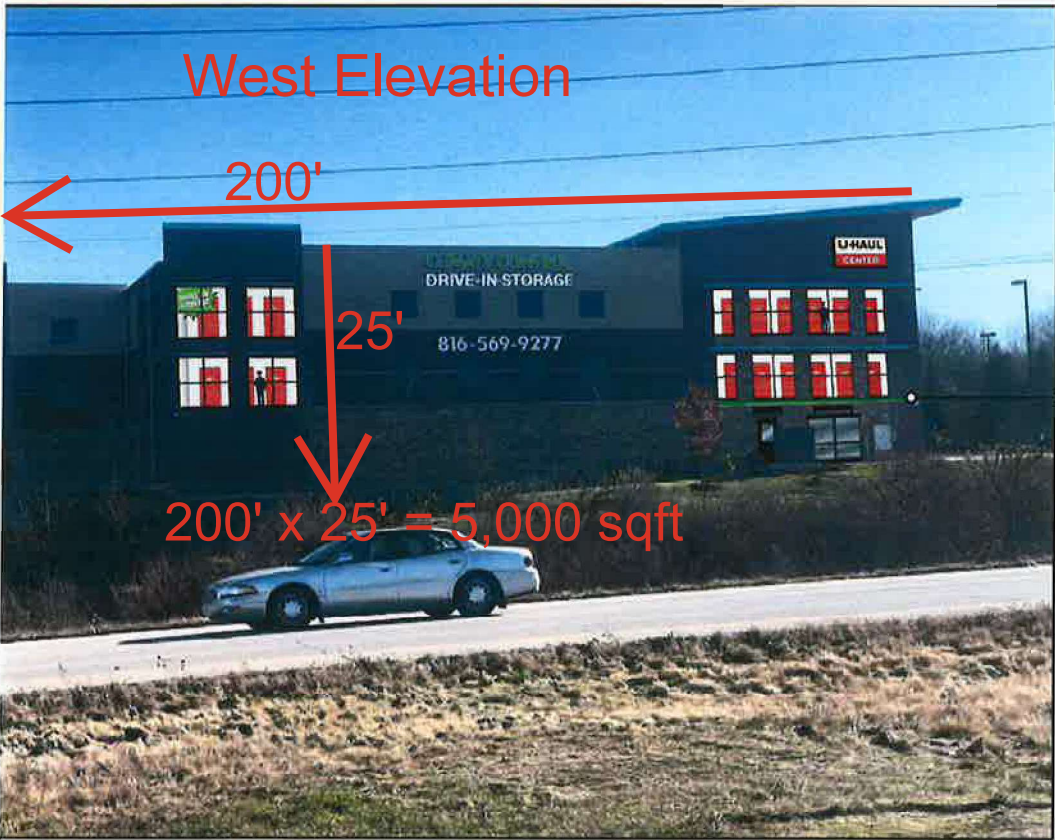
$200' \times 25' = 5,000 \text{ sqft}$

We are NOT removing any tinting

CE TO U-HAUL MCP/MCO & VENDORS	Location:	UMC - Lee's Summit	Designed: Mike Shardy	05/17/24
	Street:	920 NE Deerbook St	DSD: Simon Holder	05/17/24
	City:	Lee's Summit	Approved: Mike Shardy	05/17/24
	State / Province:	Missouri	Drawings to scale. Do Not Use for fabrication, use artwork provided. Questions Call: 1-800-528-0361	
tion provided by U-Haul MCP/MCO and/or Vendors contracted through MCP/MCO. MCP/MCO and their Vendors to verify all information in these drawings to be accurate prior NCIES - NOTIFY UHI ART DEPT. PRIOR TO COMMENCING PROJECT WORK	Country / Mail Code:	USA / 60051		

or final build out
material and specs.
nal.

Proposed Signage



Have local awning vendor fabricate and install 35'W x 6"H x 2'D lit metal awning, with supports above as needed. Contact UHI-Construction for typ details on this type of awning

Type text here

NOTE: Facility Imaging Basics **Program Books** can be found on property.uhaul.com under the DESIGN tab > Art Department Downloads Projects.

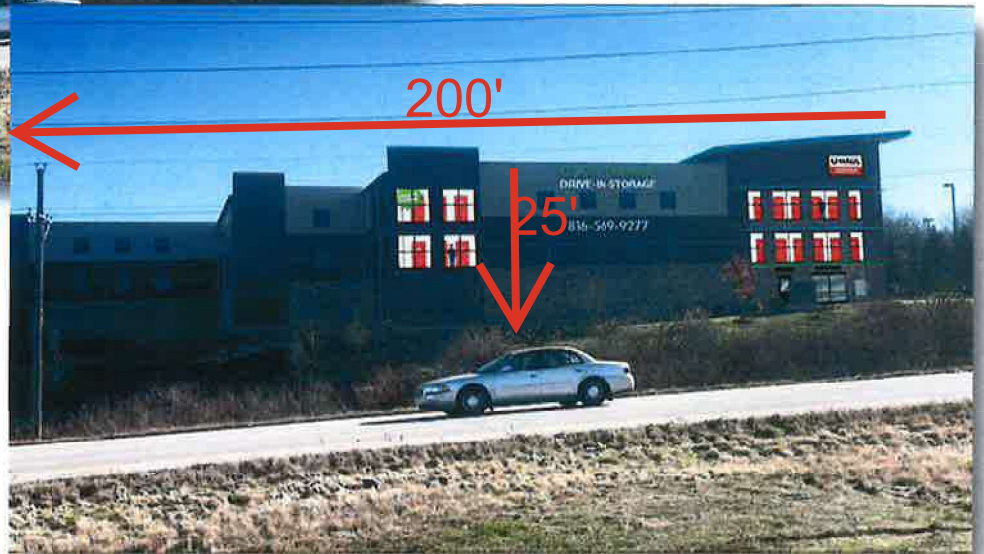


A&M ASSOCIATES, INC.

Imaging, Design, & Marketing Book



Signs
BJ
Design
Tomma for



U-Haul Moving & Storage at Lee's Summit Imaging & Signage Specifications 853-76, Lee's Summit, MO

ISSUED 05/17/2024

IMPORTANT NOTICE TO U-HAUL MCP/MCO & VENDORS

All Designs & Art specifications are based on information provided by U-Haul MCP/MCO and/or Vendors contracted through MCP/MCO. Therefore, it is the responsibility of the U-Haul MCP/MCO and their Vendors to verify all information in these drawings to be accurate prior to commencing Project Work. **FOR ANY DISCREPANCIES - NOTIFY A&M Associates PRIOR TO COMMENCING PROJECT WORK.**

A&M ASSOCIATES, INC ALL RIGHTS RESERVED.

The enclosed materials and its contents are being provided for the sole purpose to solicit project bids and/or commence project work for A&M Associates, INC. Nothing in these materials or its contents shall be construed to create a contract nor contemplate the creation of a future contract. Any and all product information, presentations, materials, displays, samples, and/or other information provided to A&M Associates as a response to these materials, so as to solicit project work, etc., will be done so at the sole expense and cost of the provider. A&M Associates assumes no liability with respect thereto. Furthermore, the enclosed materials and its contents are the confidential and proprietary information of A&M Associates. Any and all distribution, transmission, reproduction and display of such materials and its contents is strictly prohibited without the prior written consent of a corporate officer of A&M ASSOCIATES, INC.

Existing Signage

180'

25'

South Elevation

$25' \times 180' = 4,500 \text{ sqft}$

We are NOT removing any tinting



CE TO U-HAUL MCP/MCO & VENDORS

tion provided by U-Haul MCP/MCO and/or Vendors contracted through MCP/MCO.
MCO and their Vendors to verify all information in these drawings to be accurate prior
NCIES - NOTIFY UHI ART DEPT. PRIOR TO COMMENCING PROJECT WORK

Location:

Street:

City:

State / Province:

Country / Mail Code:

UMC - Lee's Summit

920 NE Deerbrook St

Lee's Summit

Missouri

USA / 60051

Designed: Mike Shardy

DSD: Simon Holder

Approved: Mike Shardy

Drawings to scale. Do Not Use for fabrication, use
artwork provided. Questions Call: 1-800-528-0361

05/17/24

05/17/24

05/17/24

mbols, can be ordered using
m > design tab > art
book STG-3XXX-22927
m.

Install (1) White "MOVING SUPPLIES" as shown.
18"H Letters use PN: 62818-085

Install (1) 4'H x 6'W U-Haul Center
ID Sign. Align as shown.
4' x 6' Cabinet lit PN: 62858-032
4' x 6' Sign Face PN: 62854-066

180'

25'

SOUTH

920
MOVING SUPPLIES

U-HAUL
CENTER

DRIVE-IN
STORAGE

2006

2010

Customer Entrance

0 1' 2' 3' 4' 5'
scale

NOTE: Facility Imaging Basics Program Books can be found on
property.uhaul.com under the DESIGN tab > Art Department Downloads Projects.

7" - Set printing page set up to approximately 130%.

©2024 U-HAUL® INTERNATIONAL • ALL RIGHTS RESERVED

14 of 33

Proposed -South Elevation

UHAUL

920 NE DEERBROOK

LEE'S SUMMIT, MO

$$25' \times 180' = 4,500 \text{ sqft}$$

INSTRUCTIONS TO U-HAUL MCP/MCO & VENDORS

Information provided by U-Haul MCP/MCO and/or Vendors contracted through MCP/MCO. U-Haul MCP/MCO and their Vendors to verify all information in these drawings to be accurate prior to fabrication. **U-Haul Vendors - NOTIFY UHI ART DEPT. PRIOR TO COMMENCING PROJECT WORK.**

Location:	UMC - Lee's Summit	Designed: Mike Shardy	05/17/24
Street:	920 NE Deerbook St	DSD: Simon Holder	05/17/24
City:	Lee's Summit	Approved: Mike Shardy	05/17/24
State / Province:	Missouri	Drawings to scale. Do Not Use for fabrication, use artwork provided. Questions Call: 1-800-528-0361	
Country / Mail Code:	USA / 60051		

L connectors
the system.
waves when
ation

metal wave
18" cnd height
PN69691-006



back with horizontal
unistrut system

Total wave count for
East and South elevation

5

en each wave!
P/N:69691-008

Install L connector here!
For the 006 Waves use P/N:69691-011



- Install one additional 8' x 18" wave on East elevation as shown
- Install 4, 8' x 18" metal waves onto South elevation view(3). Install H connectors between each wave, & L connectors on corner waves. Overhang wave 2" or more to wrap corner. Continue wave onto East elevation view(2). When trimming to fit, touch up with U-Haul Orange.
- Start wave here! P6

$25' \times 180' = 4,500\text{sqft}$

NOTE: Facility Imaging Basics Program Books can be found on property.uhaul.com under the DESIGN tab > Art Department Downloads Projects.

South