

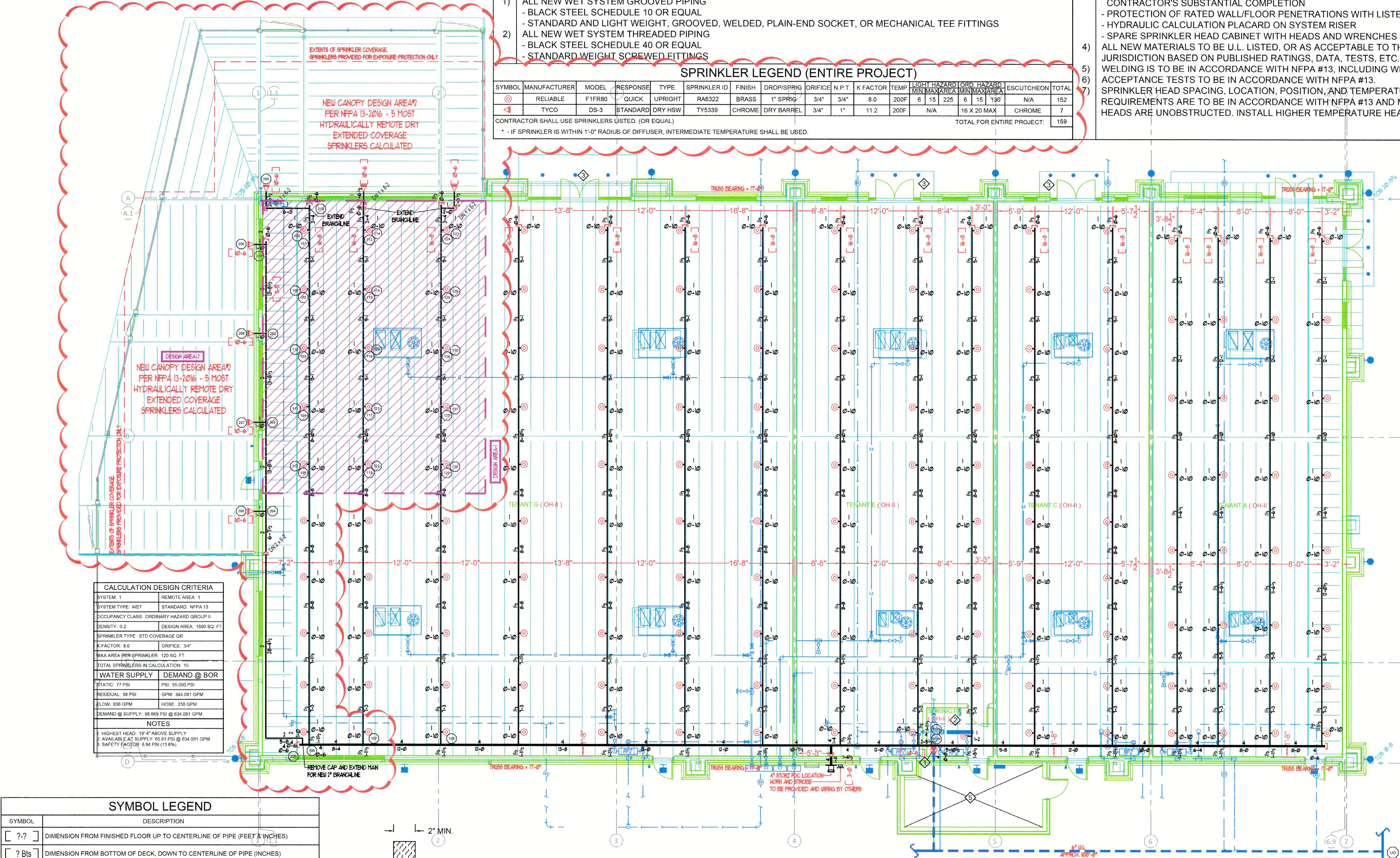
PLAN NOTES	
◇	SEE SHEET 1 FOR U.G. PIPING & RISER DETAIL.
◇	IT IS THE RESPONSIBILITY OF OTHERS TO PROTECT ELECTRICAL EQUIPMENT FROM SPRINKLER SPRAY, ESPECIALLY THIS AREA.
◇	OUTSIDE NON COMBUSTIBLE NOT USED FOR STORAGE. NO SPRINKLERS REQUIRED.
◇	AUXILIARY DRAIN. (LOCATE IN FIELD)
◇	OUTSIDE AND OPEN TO SKY. NO SPRINKLERS REQUIRED.

PROJECT NOTES	
1)	CODES: IBC-2018, NFPA 13-2016
2)	APPROVAL: CITY OF LEES SUMMIT
3)	CONSTRUCTION TYPE: NEW CONSTRUCTION TYPE VB
4)	SCOPE OF WORK: AEGIS FIRE PROTECTION'S WORK STARTS AT THE FLANGE INSIDE THE BUILDING APPROX. 1'-0" A.F.F. AS SHOWN ON THIS DRAWING, AND IS TO PROVIDE FIRE PROTECTION THROUGHOUT THE 14,300 SQ.FT. BUILDING PER NFPA 13-2016 AND CONTRACT DOCUMENTS.
5)	PIPE SIZING IS BASED ON HYDRAULIC CALCULATIONS AND NFPA 13-2016
6)	ALL AREAS ARE CLASSIFIED ORDINARY HAZARD GROUP II, UNLESS NOTED OTHERWISE
7)	IDENTIFICATION AND LABELING OF PIPING TO BE BY OTHERS
8)	PROTECTION OF PIPING WHERE SUBJECT TO EARTHQUAKES IS NOT REQUIRED.

PIPE AND FITTINGS	
1)	ALL NEW WET SYSTEM GROOVED PIPING
	- BLACK STEEL SCHEDULE 10 OR EQUAL
	- STANDARD AND LIGHT WEIGHT, GROOVED, WELDED, PLAIN-END SOCKET, OR MECHANICAL TEE FITTINGS
2)	ALL NEW WET SYSTEM THREADED PIPING
	- BLACK STEEL SCHEDULE 40 OR EQUAL
	- STANDARD WEIGHT SCREWED FITTINGS

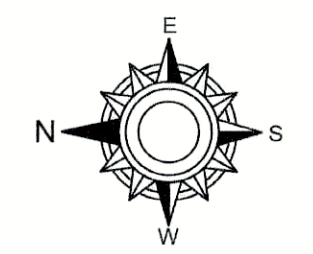
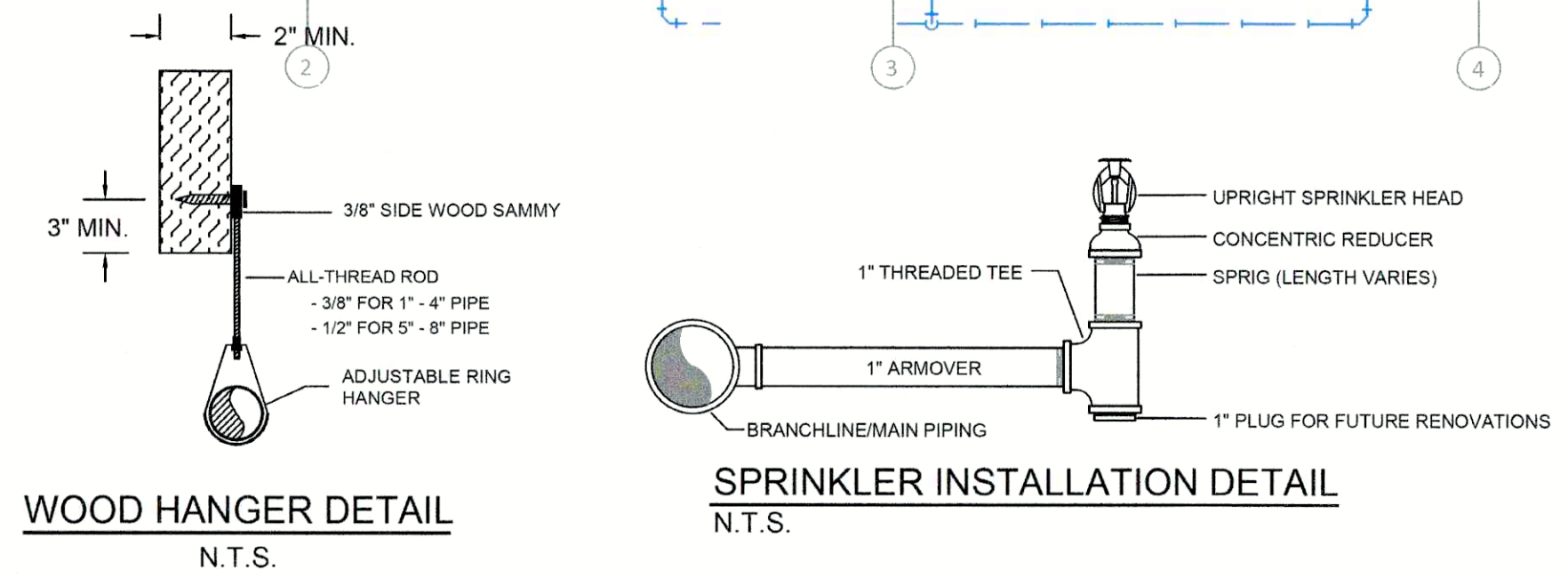
SPRINKLER LEGEND (ENTIRE PROJECT)														
SYMBOL	MANUFACTURER	MODEL	RESPONSE	TYPE	SPRINKLER ID	FINISH	DROP/SPRIG	ORIFICE	N.P.T.	K FACTOR	TEMP.	LIGHT HAZARD	ORD. HAZARD	ESCUICHEON
⊙	RELIABLE	F1FR80	QUICK	UPRIGHT	RA6322	BRASS	1" SPRIG	3/4"	3/4"	8.0	200F	6	15	225
⊙	TYCO	DS-3	STANDARD	DRY HSW	TY5339	CHROME	DRY BARREL	3/4"	1"	11.2	200F	N/A	16 X 20 MAX	CHROME
CONTRACTOR SHALL USE SPRINKLERS LISTED, (OR EQUAL)														TOTAL
* - IF SPRINKLER IS WITHIN 1'-0" RADIUS OF DIFFUSER, INTERMEDIATE TEMPERATURE SHALL BE USED.														152
														7
														159

GENERAL NOTES	
1)	SPRINKLER SYSTEMS ARE TO BE MAINTAINED IN ACCORDANCE WITH NFPA #25. THIS IS OWNER'S RESPONSIBILITY UPON CONTRACTOR'S SUBSTANTIAL COMPLETION.
2)	ALL ALARM AND SUPERVISORY SWITCHES ARE TO BE MONITORED BY A REMOTE MONITORING STATION. (BY OTHERS)
3)	INSTALLATION TO BE IN ACCORDANCE WITH MINIMUM REQUIREMENTS OF NFPA #13. WHETHER INDICATED ON THE DRAWINGS OR NOT, THE FOLLOWING IS TO BE PROVIDED:
	- SUPERVISION OF VALVES CONTROLLING WATER SUPPLIES
	- LOCAL AUDIBLE ALARM
	- QUICK RESPONSE SPRINKLERS IN ALL LIGHT HAZARD OCCUPANCIES
	- ADEQUATE SUPPORT OF ALL PIPE AND COMPONENTS
	- INSPECTOR'S TEST CONNECTION FOR EACH SYSTEM
	- PROVISION FOR FLUSHING AND DRAINING OF ALL NEW SPRINKLER SYSTEM PIPING
	- PROTECTION OF PIPING WHERE SUBJECT TO FREEZING. THIS IS OWNER'S RESPONSIBILITY UPON CONTRACTOR'S SUBSTANTIAL COMPLETION
	- PROTECTION OF RATED WALL/FLOOR PENETRATIONS WITH LISTED FIRE-STOP ASSEMBLIES
	- HYDRAULIC CALCULATION PLACARD ON SYSTEM RISER
	- SPARE SPRINKLER HEAD CABINET WITH HEADS AND WRENCHES PER NFPA #13
4)	ALL NEW MATERIALS TO BE U.L. LISTED, OR AS ACCEPTABLE TO THE AUTHORITY HAVING JURISDICTION BASED ON PUBLISHED RATINGS, DATA, TESTS, ETC.
5)	WELDING IS TO BE IN ACCORDANCE WITH NFPA #13, INCLUDING WELDER CERTIFICATION AND IDENTIFICATION STAMP.
6)	ACCEPTANCE TESTS TO BE IN ACCORDANCE WITH NFPA #13.
7)	SPRINKLER HEAD SPACING, LOCATION, POSITION, AND TEMPERATURE, AS WELL AS MINIMUM GPM AND PSI REQUIREMENTS ARE TO BE IN ACCORDANCE WITH NFPA #13 AND MANUFACTURER'S DATA. VERIFY ALL SPRINKLER HEADS ARE UNOBSTRUCTED. INSTALL HIGHER TEMPERATURE HEADS NEAR HEAT SOURCES AS REQUIRED PER NFPA #13

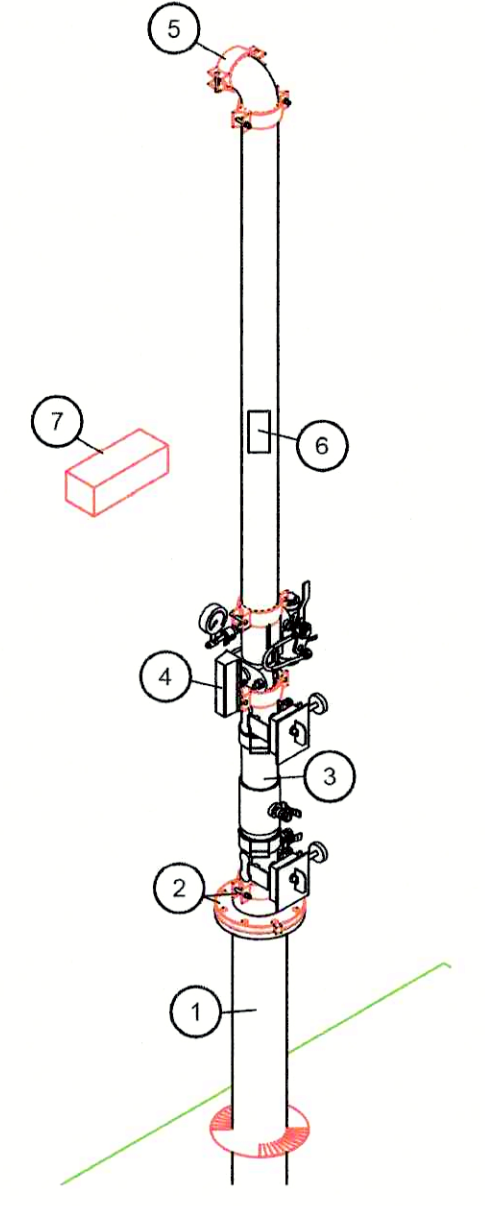
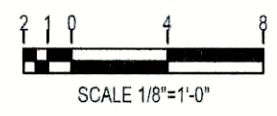


CALCULATION DESIGN CRITERIA	
SYSTEM: 1	REMOTE AREA: 1
SYSTEM TYPE: WET	STANDARD: NFPA 13
OCCUPANCY CLASS: ORDINARY HAZARD GROUP II	
DENSITY: 0.2	DESIGN AREA: 1500 SQ. FT.
SPRINKLER TYPE: STD COVERAGE OR	
K-FACTOR: 8.0	ORIFICE: 3/4"
MAX AREA PER SPRINKLER: 120 SQ. FT.	
TOTAL SPRINKLERS IN CALCULATION: 15	
WATER SUPPLY DEMAND @ BOR	
STATIC: 77 PSI	PSI: 55.000 PSI
RESIDUAL: 58 PSI	GPM: 384.081 GPM
FLOW: 836 GPM	HOSE: 250 GPM
DEMAND @ SUPPLY: 56.869 PSI @ 634.081 GPM	
NOTES	
1. HIGHEST HEAD: 16'-4" ABOVE SUPPLY	
2. AVAILABLE AT SUPPLY: 65.81 PSI @ 534.081 GPM	
3. SAFETY FACTOR: 8.94 PSI (13.6%)	

SYMBOL LEGEND	
SYMBOL	DESCRIPTION
??	DIMENSION FROM FINISHED FLOOR UP TO CENTERLINE OF PIPE (FEET & INCHES)
? Bts	DIMENSION FROM BOTTOM OF DECK, DOWN TO CENTERLINE OF PIPE (INCHES)
7-1	CEILING HEIGHT
?	HYDRAULIC CALCULATION REFERENCE POINT
OH I	ORDINARY HAZARD GROUP I OCCUPANCY CLASSIFICATION
OH II	ORDINARY HAZARD GROUP II OCCUPANCY CLASSIFICATION
---	UNDERGROUND PIPING
---	NEW PIPING
---	FULL HEIGHT WALL
---	LOW WALL (TOP OF WALL IS MORE THAN 18" BELOW SPRINKLERS. NO OBSTRUCTION)



FIRE SPRINKLER PIPING PLAN OF 1ST FLOOR



RISER LEGEND	
1	6\"/>
2	6\"/>
3	4\"/>
4	4\"/>
5	4\"/>
6	HYDRAULIC INFORMATION PLACARD
7	SPARE SPRINKLER CABINET PER NFPA-13

RISER SCHEMATIC N.T.S.

FLOW TEST INFORMATION	
- DATE:	05/22/2023
- BY:	AEGIS FIRE PROTECTION
- STATIC:	77 PSI
- RESIDUAL:	58 PSI
- FLOW:	836 GPM

NORTH

DATE: 07/22/24

REVISIONS:

07/22/24	EXTERIOR CANOPY PROTECTION
----------	----------------------------

Aegis Fire Protection, LLC

Corporate: 11936 W. 119th St. #262 Overland Park, KS 66213

Phone: 913-825-0343 Fax: 913-322-4475

ENGINEER'S STAMP

JOB NO. DPC-19187-140

JOB NAME: STREETS OF WEST PRYOR LOT 13

1020 NW PRYOR ROAD

LEES SUMMIT, MISSOURI

SYSTEM TYPE: WET

TOTAL HEADS: 159

AHU: CITY & OWNER

SCALE: SEE PLAN

DESIGNED BY: BD

CHECKED BY: KS

DATE: 03/19/2024

SHEET NO. FP1

1 OF 1