

Fire Sprinkler Solutions, Inc.

1704 NE 82nd Terrace, Kansas City, MO 64118
phone: 816-260-4897 fax: 816-468-5633

Date: July 10, 2024

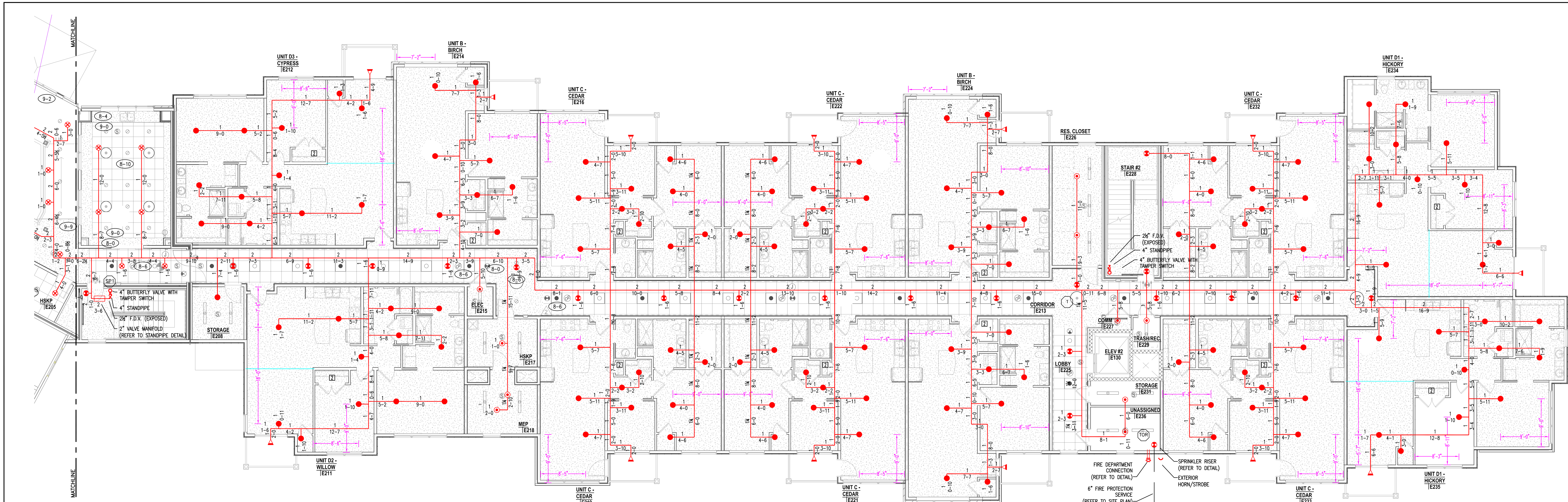
Re: Fire Sprinkler submittal review response
John Knox Village – Courtyards bldg. E
515 NW Moore Street
Lee's Summit, MO 64081

The following are responses to the fire department comments on the fire sprinkler plans:

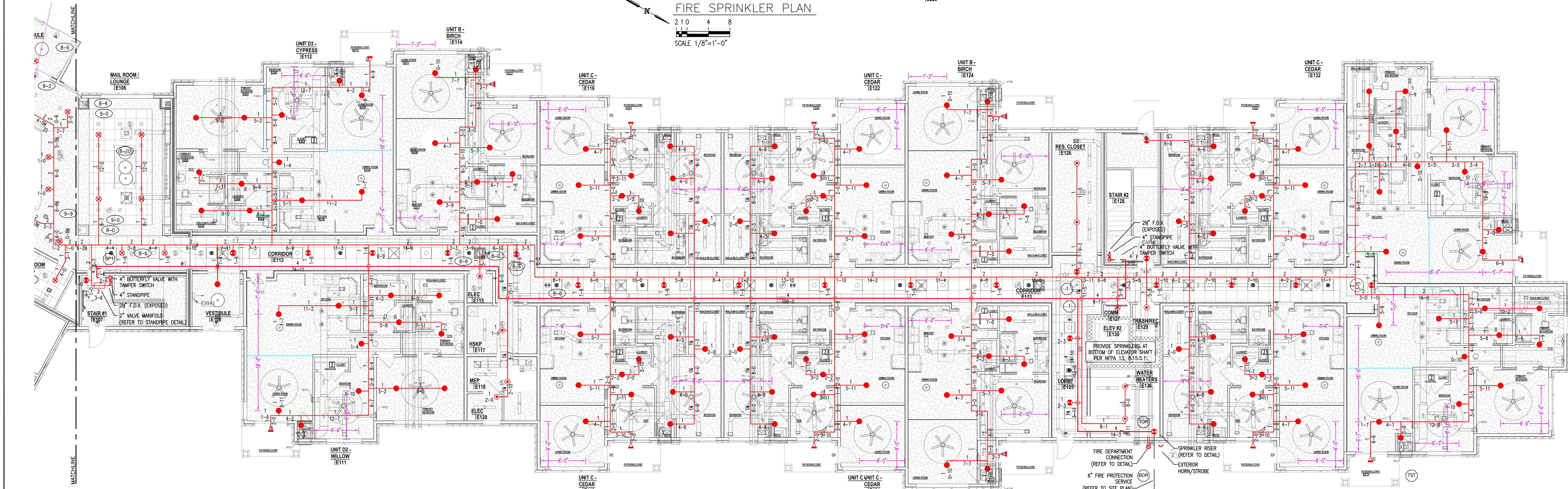
Fire sprinkler shop drawings:

1. Sheet 1 shows Fire Dept Conn as a 4" OUT TO 4x2-1/2x2-1/2". This needs to be a 4" storz with a 30 degree elbow

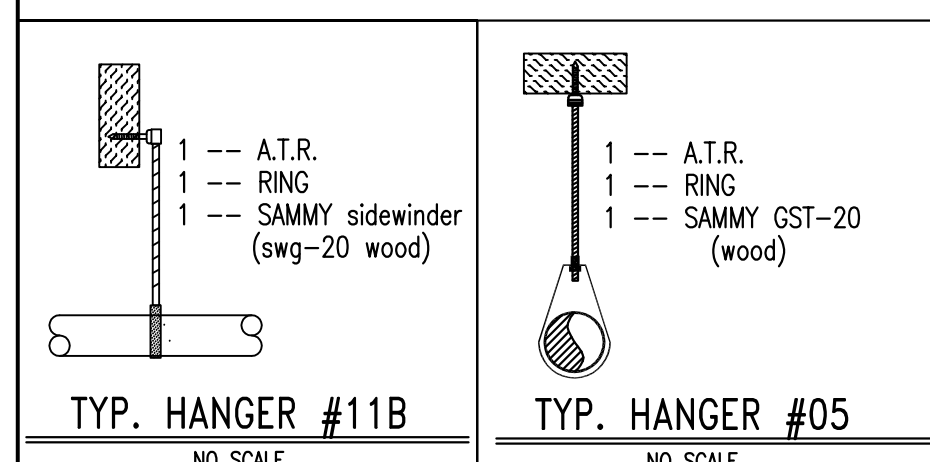
The drawing has been revised to show "4" OUT TO 4" STORZ WITH 30 DEGREE ELBOW FIRE DEPT. CONN."



SECOND FLOOR
IL UNITS
FIRE SPRINKLER PLAN
2 10 4 8
SCALE 1/8"=1'-0"



FIRST FLOOR
IL UNITS
FIRE SPRINKLER PLAN
2 10 4 8
SCALE 1/8"=1'-0"



HANGER SPACING TABLE									
PIPE SIZE (NOMINAL, INCHES)	3/4"	1"	1-1/4"	1-1/2"	2"	2-1/2"	3"	4"	6"
STEEL PIPE (EXCEPT THREADED LIGHTWALL)	N/A	12'-0"	12'-0"	15'-0"	15'-0"	15'-0"	15'-0"	15'-0"	15'-0"
STEEL PIPE (THREADED LIGHTWALL)	N/A	12'-0"	12'-0"	12'-0"	12'-0"	12'-0"	12'-0"	N/A	N/A
COPPER	8'-0"	8'-0"	10'-0"	10'-0"	12'-0"	12'-0"	15'-0"	15'-0"	15'-0"
CPVC	5'-6"	6'-0"	6'-6"	7'-0"	8'-0"	9'-0"	10'-0"	N/A	N/A

SYMBOLS LEGEND	
SYMBOL	DESCRIPTION
*	DENOTES HYDRAULICALLY CALCULATED SPRINKLER
(I)	HYDRAULIC REFERENCE POINT
(P-7)	CEILING HEIGHT
TOJ	TOP OF JOIST ELEVATION ABOVE FINISHED FLOOR
(C 2'-2")	CENTERLINE OF PIPE DOWN FROM CEILING OR ROOF
(EL 2'-2")	CENTERLINE OF PIPE A.F.F.
○ RN	RISER NIPPLE
○ DN	PIPE DOWN
○	VERTICAL SUPPLY RISER
○	SPRINKLER RISER
—	APPROVED TYPE HANGER ON PIPE

SPRINKLER LEGEND									
SYMBOL	SPRINKLER TYPE	SIN #	FINISH	TEMP.	THREAD	K-FACTOR	1ST FLR	2ND FLR	3RD FLR
●	RELIABLE MODEL F1R649 RESIDENTIAL RECESSED PENDENT	R3516	WHITE	155°	1/2"	4.9	131	131	121
◐	RELIABLE MODEL R7C49 RESIDENTIAL CONCEALED PENDENT	RGC49	WHITE	165°	1/2"	4.9	21	21	20
◑	RELIABLE MODEL F1R644 RESIDENTIAL SIDEWALL	R3531	WHITE	155°	1/2"	4.4	—	—	6
◒	RELIABLE MODEL F1FR56 Q.R. RECESSED PENDENT	F1FR56	WHITE	155°	1/2"	5.6	13	13	33
◓	RELIABLE MODEL F1FR56 Q.R. PENDENT (EXPOSED - BELOW CEILING)	F1FR56	WHITE	155°	1/2"	5.6	—	—	10
◔	RELIABLE MODEL G6-46 CONCEALED PENDENT	F1FR56	WHITE	155°	1/2"	5.6	28	27	6
◕	RELIABLE MODEL F3QR56 Q.R. STANDARD SPRAY DRY HORIZONTAL SIDEWALL	F3QR56	CHROME	200°	1/2"	5.6	13	13	13
	TOTAL						206	205	199

ALL SAFE FIRE PROTECTION LLC
6603D Royal Street
Pleasant Valley, MO. 64068
P: 816-492-7202
F: 816-492-7310
info@allsafefirepro.com

JOHN KNOX VILLAGE
COURTYARDS BUILDING E
New Independent Living Building
Lee's Summit, MO

CONTRACT NO.
CONTRACT WITH
Straub Construction
DRAWN BY:
PCL
CHECKED BY:
VC
PLOTTED FOR:
APPROVAL
DOCUMENT DATE:
07-10-24
SHEET NUMBER:
2 OF 5











REVISIONS:
DATE DESCRIPTION
1 07-10-24 PER CITY COMMENTS

Fire Sprinkler Solutions, Inc.
1704 NE 82nd Terrace, Kansas City, MO 64118
phone: 816-260-4897 fax: 816-468-5633



SCALE $\frac{1}{8}" = 1'-0"$

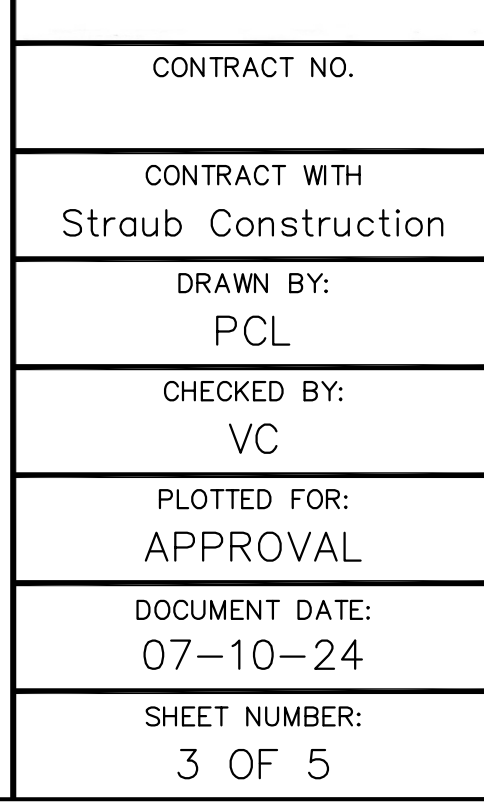
	HANGER	SPACING	TABLE							
PIPE SIZE (NOMINAL, INCHES)	3/4"	1"	1-1/4"	1-1/2"	2"	2-1/2"	3"	4"	6"	8"
STEEL PIPE (EXCEPT THREADED LIGHTWALL)	N/A	12'-0"	12'-0"	15'-0"	15'-0"	15'-0"	15'-0"	15'-0"	15'-0"	15'-0"
STEEL PIPE (THREADED LIGHTWALL)	N/A	12'-0"	12'-0"	12'-0"	12'-0"	12'-0"	12'-0"	N/A	N/A	N/A
COPPER	8'-0"	8'-0"	10'-0"	10'-0"	12'-0"	12'-0"	12'-0"	15'-0"	15'-0"	15'-0"
CPVC	5'-6"	6'-0"	6'-6"	7'-0"	8'-0"	9'-0"	10'-0"	N/A	N/A	N/A

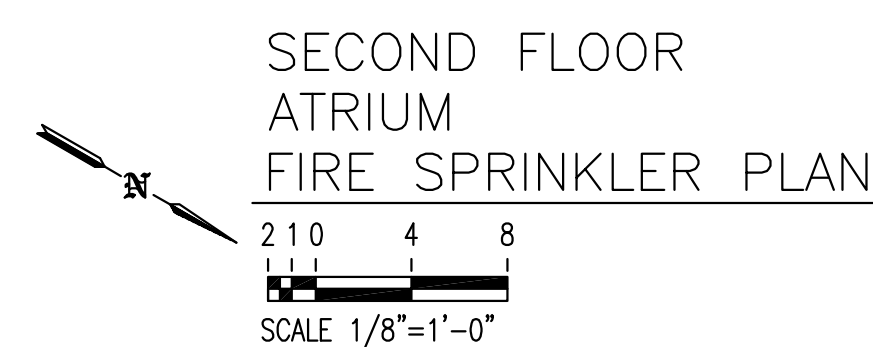
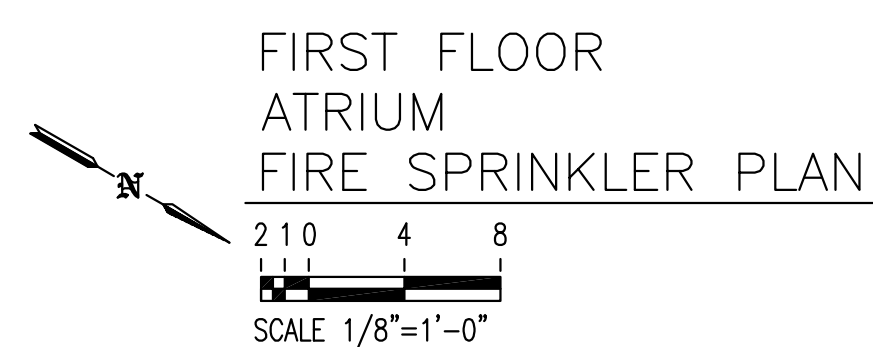
SYMBOLS LEGEND	
SYMBOL	DESCRIPTION
	DENOTES HYDRAULICALLY CALCULATED SPRINKLER
	HYDRAULIC REFERENCE POINT
	CEILING HEIGHT
TOJ	TOP OF JOIST ELEVATION ABOVE FINISHED FLOOR
	CENTERLINE OF PIPE DOWN FROM CEILING OR ROOF
	CENTERLINE OF PIPE A.F.F.
	RISER NIPPLE
	PIPE DOWN
	VERTICAL SUPPLY RISER
	SPRINKLER RISER
	APPROVED TYPE HANGER ON PIPE

SPRINKLER LEGEND											
SYMBOL	SPRINKLER TYPE	SIN #	FINISH	TEMP.	THREAD	K-FACTOR	1ST FLR	2ND FLR	3RD FLR	4TH FLR	TOTAL
●	RELIABLE MODEL F1R949 RESIDENTIAL RECESSED PENDENT	R3516	WHITE	155°	1/2"	4.9	131	131	121	4	387
●	RELIABLE MODEL RFC49 RESIDENTIAL CONCEALED PENDENT	ROC49	WHITE	165°	1/2"	4.9	21	21	20	-	62
◀	RELIABLE MODEL F1R944 RESIDENTIAL SIDEWALL	R3531	WHITE	155°	1/2"	4.4	-	-	6	160	166
⊙	RELIABLE MODEL F1FR56 Q.R. RECESSED PENDENT	F1FR56	WHITE	155°	1/2"	5.6	13	13	33	1	60
⊙	RELIABLE MODEL F1FR56 Q.R. PENDENT (EXPOSED - BELOW CEILING)	F1FR56	WHITE	155°	1/2"	5.6	-	-	-	10	10
⊗	RELIABLE MODEL GG-46 CONCEALED PENDENT	F1FR56	WHITE	155°	1/2"	5.6	28	27	6	-	61
<	RELIABLE MODEL F3QR56 Q.R. STANDARD SPRAY DRY HORIZONTAL SIDEWALL	F3QR56	CHROME	200°	1/2"	5.6	13	13	13	13	52
					TOTAL		206	205	199	188	798

Fire Sprinkler Solutions, Inc.
1704 NE 82nd Terrace, Kansas City, MO 64118
phone: 816-260-4897 fax: 816-468-5633

**JOHN KNOX VILLAGE
COURTYARDS BUILDING E**
New Independent Living Building
Lee's Summit, MO



HANGER SPACING TABLE[illegible]

SYMBOLS LEGEND	
SYMBOL	DESCRIPTION
*	DENOTES HYDRAULICALLY CALCULATED SPRINKLER
I	HYDRAULIC REFERENCE POINT
7-7	CEILING HEIGHT
TOJ	TOP OF JOIST ELAVATION ABOVE FINISHED FLOOR
7-7	CENTERLINE OF PIPE DOWN FROM CEILING OR ROOF
7-7	CENTERLINE OF PIPE A.F.F.
RN	RISER NIPPLE
DN	PIPE DOWN
○	VERTICAL SUPPLY RISER
⊕	SPRINKLER RISER
—	APPROVED TYPE HANGER ON PIPE

SPRINKLER LEGEND											
SYMBOL	SPRINKLER TYPE	SIN #	FINISH	TEMP.	THREAD	K-FACTOR	1ST FLR	2ND FLR	3RD FLR	4TH FLR	TOTAL
●	RELIABLE MODEL F1R9949 RESIDENTIAL RECESSED PENDENT	R3516	WHITE	155°	1/2"	4.9	131	131	121	4	387
●	RELIABLE MODEL R7C49 RESIDENTIAL CONCEALED PENDENT	R9C49	WHITE	165°	1/2"	4.9	21	21	20	–	62
◀	RELIABLE MODEL F1R9944 RESIDENTIAL SIDEWALL	R3531	WHITE	155°	1/2"	4.4	–	–	6	160	166
⊙	RELIABLE MODEL F1FR56 Q.R. RECESSED PENDENT	F1FR56	WHITE	155°	1/2"	5.6	13	13	33	1	60
⊙	RELIABLE MODEL F1FR56 Q.R. PENDENT (EXPOSED – BELOW CEILING)	F1FR56	WHITE	155°	1/2"	5.6	–	–	–	10	10
⊗	RELIABLE MODEL 06-46 CONCEALED PENDENT	F1FR56	WHITE	155°	1/2"	5.6	28	27	6	–	61
◀	RELIABLE MODEL F3QR56 Q.R. STANDARD SPRAY DRY HORIZONTAL SIDEWALL	F3QR56	CHROME	200°	1/2"	5.6	13	13	13	13	52
TOTAL							206	205	199	188	798

Fire Sprinkler Solutions, Inc.
1704 NE 82nd Terrace, Kansas City, MO 64118
phone: 816-260-4897 fax: 816-468-5633

 **ALL SAFE** FIRE PROTECTION LLC
6603D Royal Street
Pleasant Valley, MO. 64068
P-816-492-7202
F-816-492-7310
info@allsafefirepro.com

**JOHN KNOX VILLAGE
COURTYARDS BUILDING E**
New Independent Living Building
Lee's Summit, MO



CONTRACT NO.

CONTRACT WITH
Straub Construction

DRAWN BY:
PCL

CHECKED BY:
VC

PLOTTED FOR:
APPROVAL

DOCUMENT DATE
07-10-24

SHEET NUMBER
4 OF 5

