

LICENSE PLATE READER CAMERA IN-STALLATION

CASE NUMBER: 00673127  
PERMITTING JURISDICTION:  
Lee's Summit (City of)

Lee's Summit (City of)  
ON BEHALF OF  
MO - Lee's Summit PD

[THIS SPACE LEFT INTENTIONALLY BLANK FOR STAMP]

CONTACT LIST

PERMITTING  
christine.strileckis@flocksafety.com

PROJECT MANAGER  
alex.catozzi@flocksafety.com

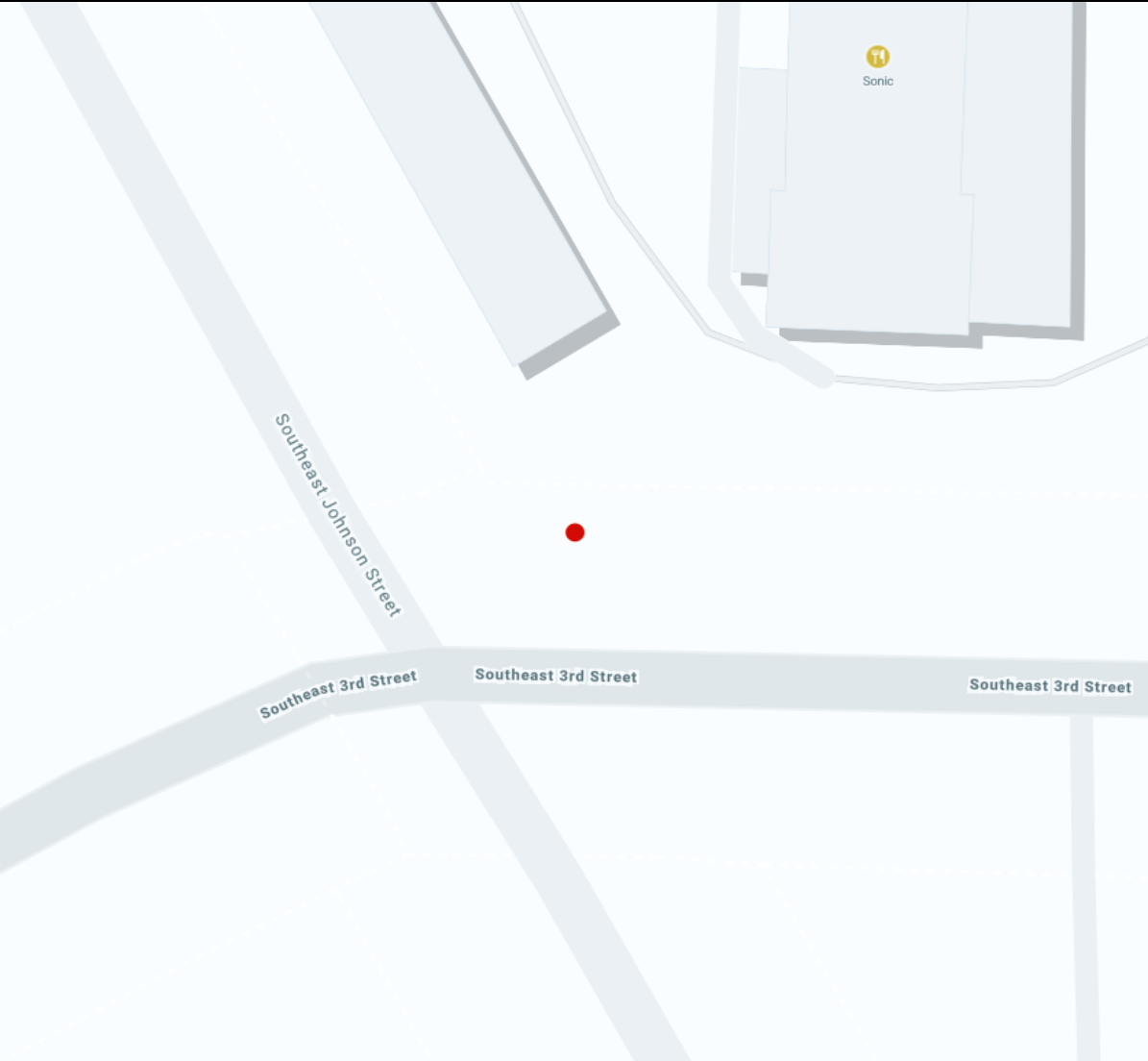
SEE APPROVED PERMIT FOR LISTED INSPECTOR\*

DRAWING INDEX

T.01	COVER SHEET & LOCATION MAPS
GN.01	GENERAL NOTES
A.01	PLAN DRAWINGS
SPEC.01 - SPEC.03	EQUIPMENT & FOUNDATION DETAILS



Know what's below.  
Call before you dig.



MO - Lee's Summit PD  
00673127

Flock Safety  
1170 HOWELL MILL ROAD SUITE 210  
ATLANTA, GA 30318

REV	DATE	BY	DESCRIPTION
-	-	-	-
-	-	-	-
-	-	-	-
-	-	-	-
0	07/18/2024	FLK	PRELIM

I HEREBY CERTIFY THIS DOCUMENT WAS PREPARED BY MYSELF OR UNDER MY DIRECT SUPERVISION AND THAT I AM A DULY REGISTERED ENGINEER UNDER THE LAWS OF THE STATE OF MISSOURI

[THIS SPACE LEFT INTENTIONALLY BLANK FOR STAMP]

LICENSE PLATE READER CAMERA INSTALLATION  
CASE NUMBER: 00673127  
PERMITTING JURISDICTION: Lee's Summit (City of)

COVER SHEET & LOCATION MAPS	
SHEET: T.01	REV: 0



FLOCK LOCATION DETAILS

LOCATION NAME: #50 SE 3rd St. @ SE Johnson St - WB  
GEOGRAPHIC COORDINATES:  
38.9138867841312,-94.37318560811354



STREET NAME/SR #	SPEED LIMIT	TRAFFIC VOLUME	EOP DISTANCE
300 SE 3rd St	35	3000	4.7 ft



REV	DATE	BY	DESCRIPTION
-	-	-	-
-	-	-	-
-	-	-	-
-	-	-	-
0	07/18/2024	FLK	PRELIM

I HEREBY CERTIFY THIS DOCUMENT WAS PREPARED BY MYSELF OR UNDER MY DIRECT SUPERVISION AND THAT I AM A DULY REGISTERED ENGINEER UNDER THE LAWS OF THE STATE OF MISSOURI

LICENSE PLATE READER CAMERA INSTALLATION  
CASE NUMBER: 00673127  
PERMITTING JURISDICTION: Lee's Summit (City of)

COVER SHEET & LOCATION MAPS	
SHEET: A.01	REV: 0



DESIGN NOTES

1. POLE AND FOUNDATIONS ARE DESIGNED IN ACCORDANCE WITH THE FOLLOWING CODES:
- 1.1. 2009/2012/2015/2018/2021 INTERNATIONAL BUILDING CODE
- 1.2. AASHTO LRFD SPECIFICATIONS FOR STRUCTURAL SUPPORT FOR HIGHWAY SIGNS, LUMIN, TRAFFIC SIGNALS, 2015 EDITION.
2. POLE ANALYSIS AND FOUNDATION DESIGN ARE BASED ON THE FOLLOWING CRITERIA
- 2.1. DESIGN WIND SPEED (Vult): (SEE SECTION 2.6)
- 2.2. RISK CATEGORY: II
- 2.3. EXPOSURE CATEGORY: C
- 2.4. TOPOGRAPHIC CATEGORY: 1
- 2.5. SEISMIC DESIGN CRITERIA:
- 2.5.1. SOIL SITE CLASS: D (ASSUMED)
- 2.5.2. SPECTRAL RESPONSE, S<sub>s</sub>: 1.000g (MAXIMUM)
- 2.5.3. SPECTRAL RESPONSE, S<sub>1</sub>: 0.400g (MAXIMUM)
- 2.5.4. SEISMIC DESIGN CATEGORY: B
- 2.6. STRUCTURE BASE REACTIONS ARE CALCULATED AS FOLLOWS:

DESIGN WIND SPEED (MPH)	MOMENT (K-FT)	SHEAR (KIP)	AXIAL (KIP)
115	2.70	0.280	0.160
125	3.20	0.330	0.160
135 (MAX)	3.70	0.380	0.160

- 2.7. SHOULD ANY OF THE SITE-SPECIFIC PARAMETERS BE HIGHER THAN WHAT IS NOTED ABOVE, THE EOR SHALL BE CONTACTED TO PROVIDE A REVISED DESIGN.
3. CONTRACTOR IS RESPONSIBLE FOR VERIFYING SOIL CONDITIONS PRIOR TO INSTALLATION.
4. FOUNDATION TO CONSIST OF CONCRETE SURROUNDING THE PROPOSED POLE WITH A MINIMUM OF 3,000-PSI COMPRESSIVE STRENGTH.

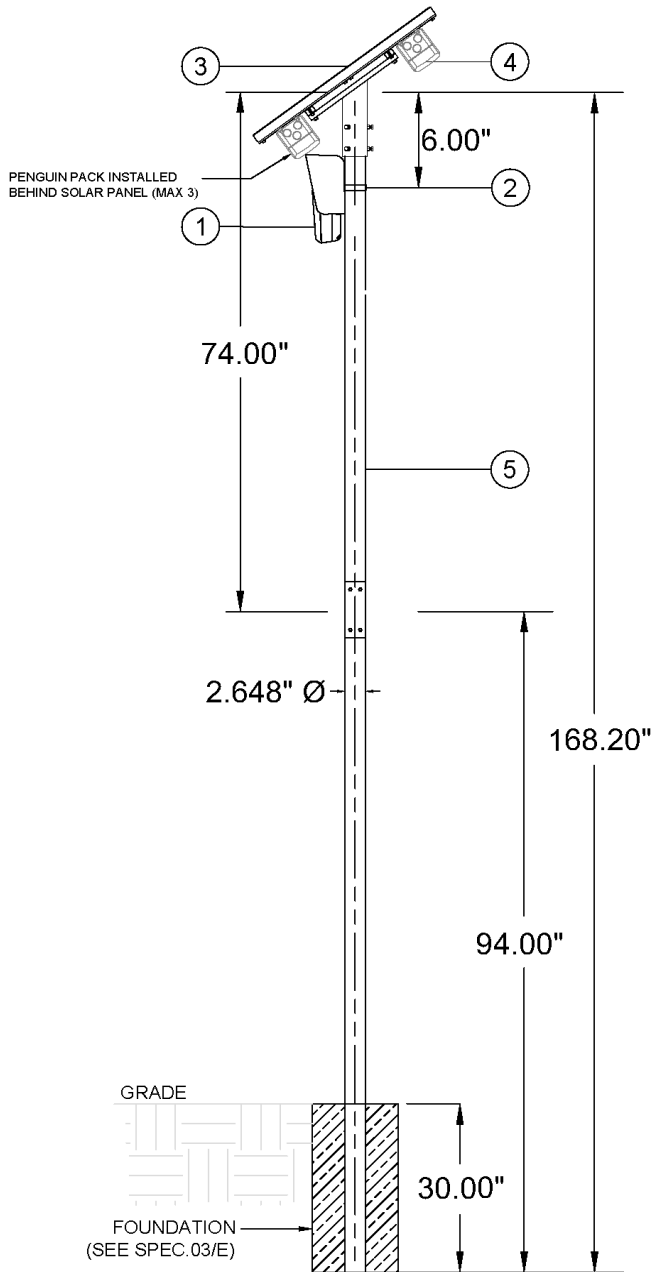
GENERAL & CONSTRUCTION NOTES

1. CONTRACTOR SHALL CONTACT DESIGNATED AGENCY TO LOCATE ALL UNDERGROUND UTILITIES PRIOR TO CONSTRUCTION.
2. CONTRACTOR SHALL APPLY AND OBTAIN AN APPROVED TRAFFIC CONTROL PLAN IN ACCORDANCE WITH MUTCD AND LOCAL JURISDICTION STANDARDS.
3. CONTRACTOR SHALL RESTORE ALL DISTURBED AREAS TO ORIGINAL SITE CONDITION TO THE SATISFACTION OF STATE DEPARTMENT OF TRANSPORTATION AND LOCAL JURISDICTION.
4. ALL WORK SHALL CONFORM TO APPLICABLE ELECTRICAL CODES EXCEPT WHEN STATE DEPARTMENT OF TRANSPORTATION OR LOCAL JURISDICTION STANDARDS SUPERSEDE.
5. ALL CONSTRUCTION SHALL BE IN ACCORDANCE WITH SPECIFICATIONS DEFINED BY THE STATE DEPARTMENT OF TRANSPORTATION OR LOCAL JURISDICTION, UNLESS SPECIFICALLY STATED OR SHOWN OTHERWISE HEREIN.

ADA COMPLIANCE NOTES

1. ALL SIDEWALK CONSTRUCTION SHALL BE IN ACCORDANCE WITH ADA TITLE II, STATE DEPARTMENT OF TRANSPORTATION, AND LOCAL JURISDICTION STANDARDS.
2. STATE DEPARTMENT OF TRANSPORTATION CURRENT EDITION STANDARDS SHALL BE USED FOR PEDESTRIAN CONTROL PLANS WHEN CLOSURE OF SIDEWALK IS REQUIRED FOR CONSTRUCTION.
3. MINIMUM CLEAR PEDESTRIAN ACCESS ROUTE (PAR) SHALL BE 48" WIDE.
4. NO OBSTRUCTION IS PERMITTED ALONG THE WIDTH OF THE SIDEWALK. UP TO AN ELEVATION OF 7'-0" ABOVE GRADE.

ITEM NO.	PART NUMBER	DESCRIPTION	TOTAL WEIGHT (LB)	QTY.
1	701-0059	FLOCK SAFETY CAMERA	3.6	1
2	201-00087	MOUNTING CLAMP	2.0	1
3	205-00010	80W SOLAR KIT	17.0	1
4	702-00028	PENGUIN PACK	4	3 (MAX)
5	1020-01	STYLE 7 COUPLER ASSEMBLY	168.42	1



1 POLE ELEVATION DETAIL

SCALE: N/A

[THIS SPACE LEFT INTENTIONALLY BLANK FOR STAMP]

MO - Lee's Summit PD  
00673127

Flock Safety  
1170 HOWELL MILL ROAD SUITE 210  
ATLANTA, GA 30318

REV	DATE	BY	DESCRIPTION
-	-	-	-
-	-	-	-
-	-	-	-
-	-	-	-
0	07/18/2024	FLK	PRELIM

I HEREBY CERTIFY THIS DOCUMENT WAS PREPARED BY MYSELF OR UNDER MY DIRECT SUPERVISION AND THAT I AM A DULY REGISTERED ENGINEER UNDER THE LAWS OF THE STATE OF MISSOURI

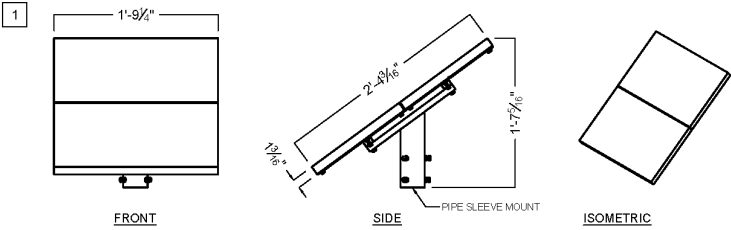
[THIS SPACE LEFT INTENTIONALLY BLANK FOR STAMP]

LICENSE PLATE READER CAMERA INSTALLATION  
CASE NUMBER: 00673127  
PERMITTING JURISDICTION: Lee's Summit (City of)

COVER SHEET & LOCATION MAPS

SHEET:  
SPEC.01

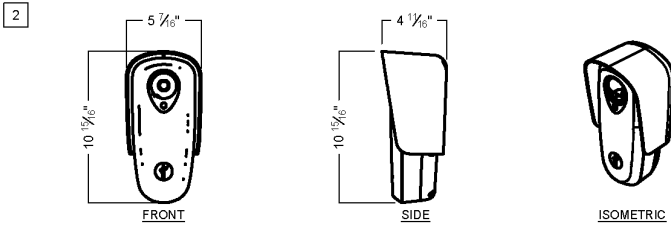
REV:  
0



☐ NOT USED

60 WATT SOLAR PANEL DETAIL (TOP MOUNTED)

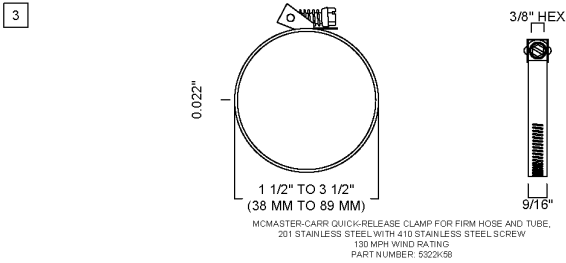
MOUNTING HARDWARE TO BE PROVIDED BY FLOCK SAFETY



☐ NOT USED

FLOCK SAFETY "FALCON" CAMERA

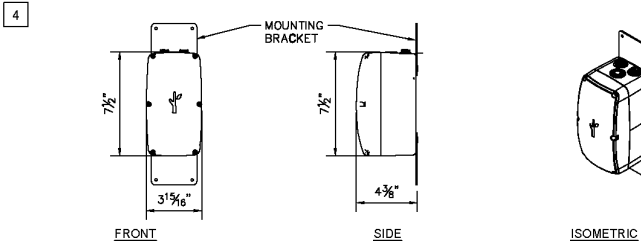
MOUNTING HARDWARE TO BE PROVIDED BY FLOCK SAFETY



☐ NOT USED

MOUNTING CLAMP

NOTE: LARGER DIAMETER POLES WILL USE AN EQUIVALENT 201 STAINLESS STEEL STRAPPING CUT TO LENGTH.



☐ NOT USED

"PENGUIN" BATTERY PACK

MOUNTING HARDWARE TO BE PROVIDED BY FLOCK SAFETY

[THIS SPACE LEFT INTENTIONALLY BLANK FOR STAMP]

MO - Lee's Summit PD

00673127

Flock Safety  
1170 HOWELL MILL ROAD SUITE 210  
ATLANTA, GA 30318

REV	DATE	BY	DESCRIPTION
-	-	-	-
-	-	-	-
-	-	-	-
-	-	-	-
0	07/18/2024	FLK	PRELIM

I HEREBY CERTIFY THIS DOCUMENT WAS PREPARED BY MYSELF OR UNDER MY DIRECT SUPERVISION AND THAT I AM A DULY REGISTERED ENGINEER UNDER THE LAWS OF THE STATE OF MISSOURI

[THIS SPACE LEFT INTENTIONALLY BLANK FOR STAMP]

LICENSE PLATE READER CAMERA INSTALLATION

CASE NUMBER: 00673127  
PERMITTING JURISDICTION: Lee's Summit (City of)

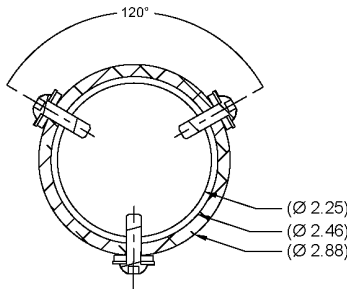
COVER SHEET & LOCATION MAPS

SHEET:  
**SPEC.02**

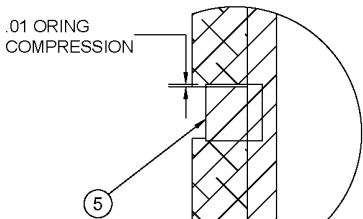
REV:  
**0**

ITEM NO.	DESCRIPTION	QTY.
1	2.5" SCH 40 2.875OD 74.000L	1
2	2.5 SCH 40 2.875OD 94.000L	1
3	BUT TORX 0.250-20 TAMPER-RESISTANT	6
4	INSERT SLEEVE STYLE 7 TAPPED	1
5	ORING	1
6	WASHER	6
7	CONCRETE FOOTING	1
8	HBOLT 0.2500-20	1

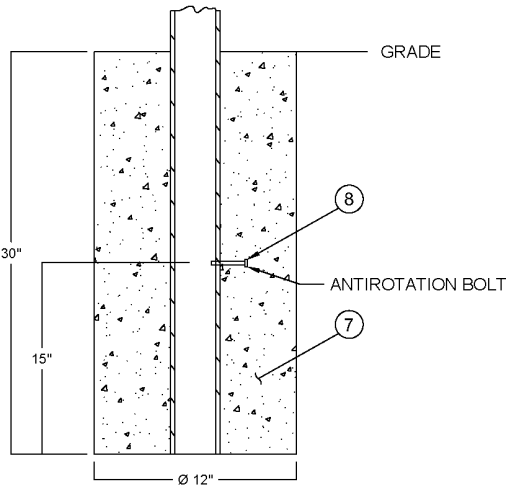
PROVELI STYLE 7 COUPLER ASSEMBLY  
PART #: 1020-01  
MATERIAL: VARIES  
WEIGHT: 168.42 LBS  
DATE: 09/27/2023  
DO NOT SCALE DRAWINGS (NTS)



SECTION C-C

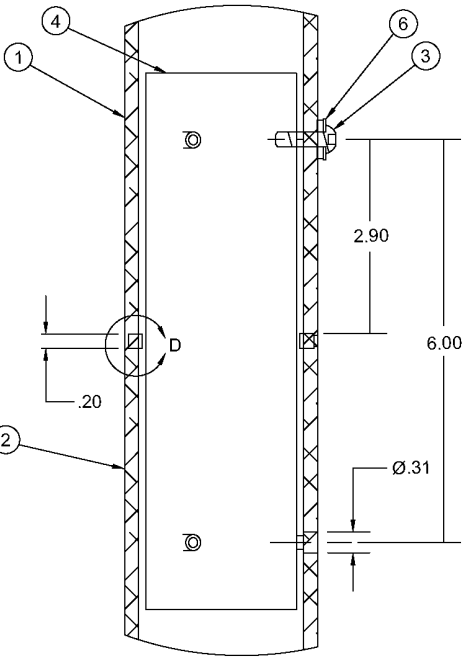


DETAIL D

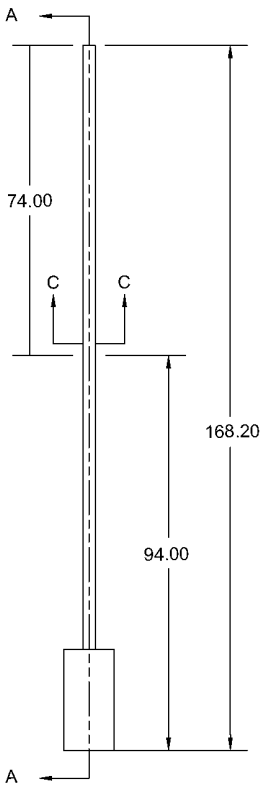


DETAIL E

NOTE: CONCRETE SHALL HAVE A  
MINIMUM COMPRESSIVE STRENGTH  
OF 3,000 PSI.



DETAIL B



SECTION A-A

[THIS SPACE LEFT INTENTIONALLY BLANK FOR STAMP]

MO - Lee's Summit PD  
00673127

Flock Safety  
1170 HOWELL MILL ROAD SUITE 210  
ATLANTA, GA 30318

REV	DATE	BY	DESCRIPTION
-	-	-	-
-	-	-	-
-	-	-	-
-	-	-	-
0	07/18/2024	FLK	PRELIM

I HEREBY CERTIFY THIS DOCUMENT WAS PREPARED BY MYSELF OR  
UNDER MY DIRECT SUPERVISION AND THAT I AM A DULY REGISTERED  
ENGINEER UNDER THE LAWS OF THE STATE OF MISSOURI

[THIS SPACE LEFT INTENTIONALLY BLANK FOR STAMP]

LICENSE PLATE READER CAMERA INSTALLATION  
CASE NUMBER: 00673127  
PERMITTING JURISDICTION: Lee's Summit (City of)

COVER SHEET & LOCATION MAPS

SHEET:  
SPEC.03

REV:  
0