

SUMMIT FAIR, LOT 10D-10F

PUBLIC SANITARY SEWER IMPROVEMENTS

IN THE CITY OF LEE'S SUMMIT, JACKSON COUNTY, MO

GENERAL NOTES:

THE DESIGN AND CONSTRUCTION OF THE PUBLIC SANITARY SEWER FACILITIES SHALL BE GOVERNED BY THE CITY OF LEE'S SUMMIT, MISSOURI DESIGN CRITERIA AND TECHNICAL SPECIFICATIONS, LATEST EDITIONS.

UTILITY COMPANIES:

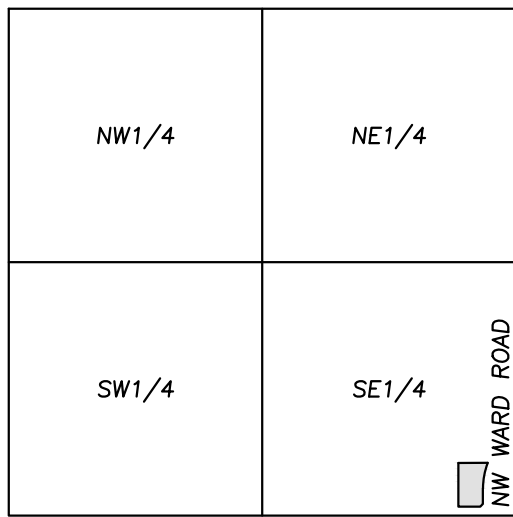
MISSOURI GAS ENERGY (816) 969-2218
LUCAS WALLS (LUCAS.WALLS@SUG.COM)
3025 SOUTHEAST CLOVER DRIVE
LEE'S SUMMIT, MO 64082

EVERGY (816) 347-4339
PHILLIP INGRAM (PHILLIP.INGRAM@KCPL.COM)
RON DEJARNETTE (RON.DEJARNETTE@KCPL.COM) (816) 347-4316
1300 HAMBLEN ROAD
LEE'S SUMMIT, MO 64081

STORM SEWER (PUBLIC WORKS DEPARTMENT) (816) 969-1800
220 SE GREEN STREET
LEE'S SUMMIT, MO 64063

SANITARY SEWER & WATER (WATER UTILITIES DEPT.) (816)-969-1900
1200 SE HAMBLEN ROAD,
LEE'S SUMMIT, MO 64081

AT&T (913) 383-4929
MR. CLAYTON ANSPAUGH (CA4089@ATT.COM) (913) 383-4849-FAX
9444 NALL AVENUE
OVERLAND PARK, KANSAS 66207



VICINITY MAP
SEC. 36-48-32

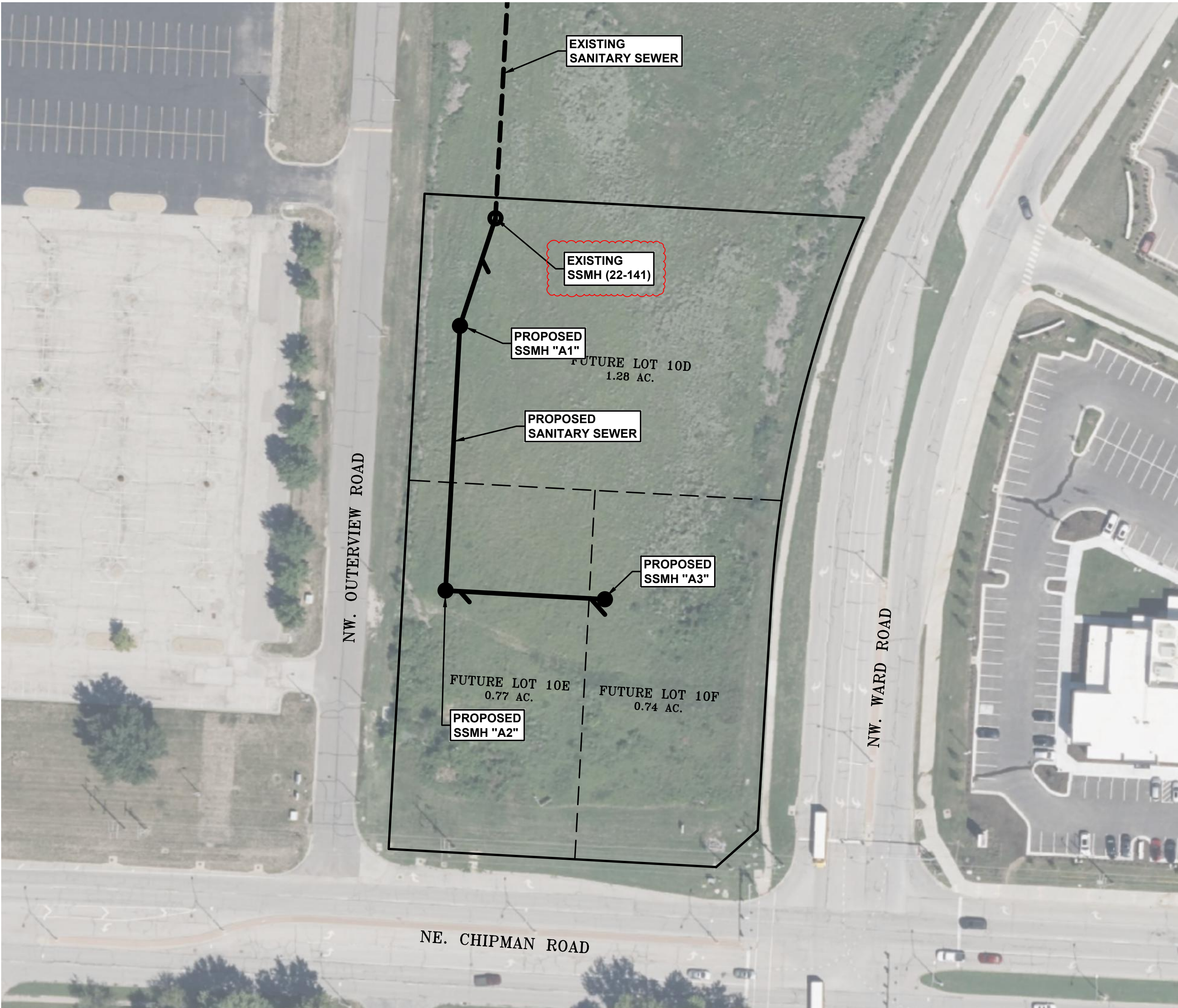


UTILITY NOTES:
VISUAL INDICATIONS OF UTILITIES ARE AS SHOWN.
UNDERGROUND LOCATIONS SHOWN, AS FURNISHED BY THEIR
LESSORS, ARE APPROXIMATE AND SHOULD BE VERIFIED IN
THE FIELD AT THE TIME OF CONSTRUCTION. FOR ACTUAL
FIELD LOCATIONS OF UNDERGROUND UTILITIES CALL 811.

NOTE: FLOWABLE FILL IS REQUIRED
AROUND ALL STORM STRUCTURES.

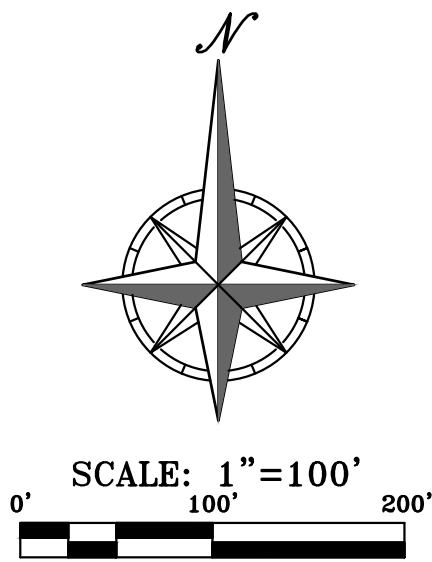
LEGEND OF SYMBOLS

Proposed Sanitary Sewer
Existing Sanitary Sewer



| | INDEX |
|------|-------------------------------|
| SS-1 | COVER SHEET |
| SS-2 | SANITARY SEWER PLAN & PROFILE |
| SS-3 | EROSION CONTROL & RESTORATION |
| SS-4 | SANITARY SEWER DETAILS |

RELEASED FOR CONSTRUCTION
As Noted on Plan Review
Development Services Department
Lee's Summit, Missouri
07/09/2024



PREPARED & SUBMITTED BY:
PHELPS ENGINEERING, INC.
1270 N. WINCHESTER
OLATHE, KANSAS 66061



JUDD D. CLAUSSEN, MISSOURI P.E.#29850

DATE

PHELPS ENGINEERING, INC.
1270 N. Winchester
Olathe, Kansas 66061
(913) 393-1155
Fax (913) 393-1166
www.phelpsengineering.com

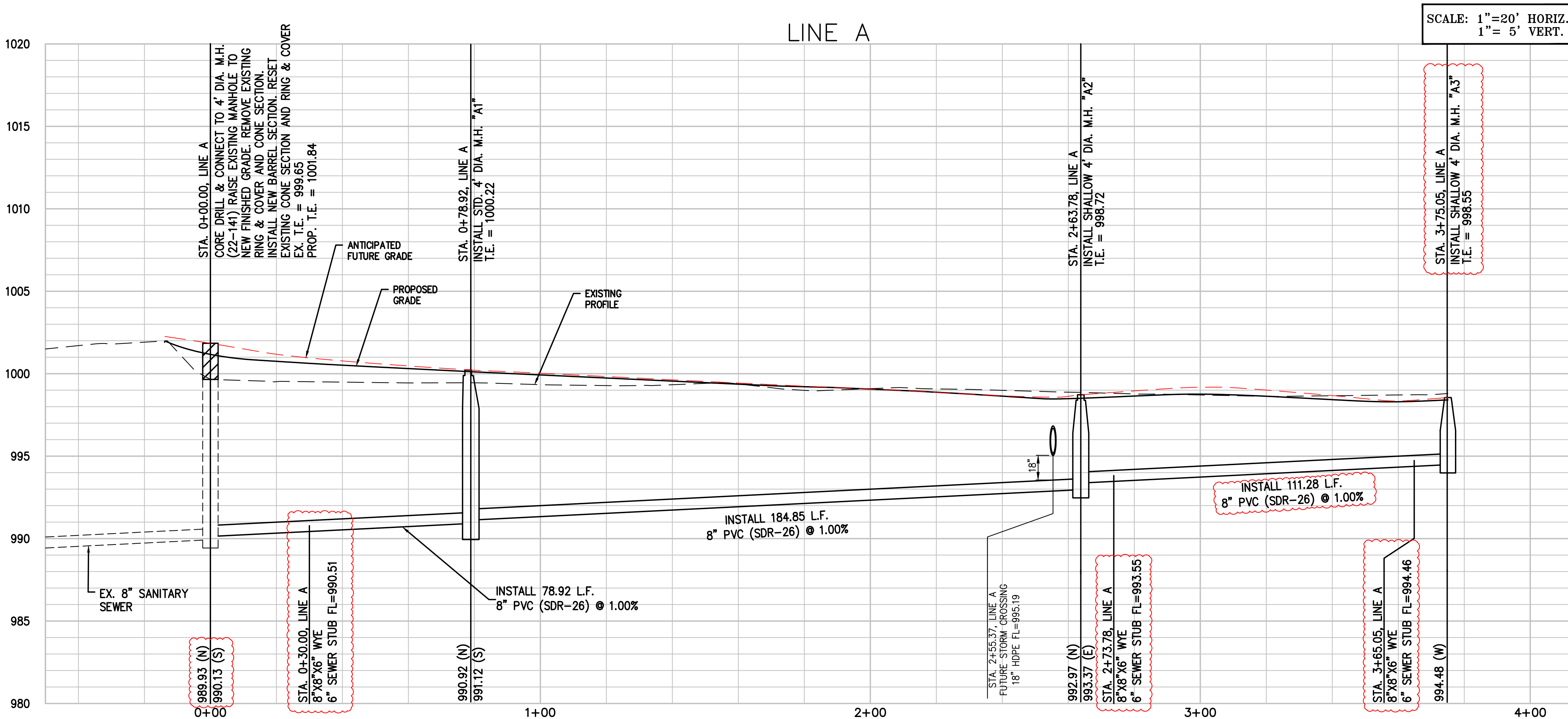
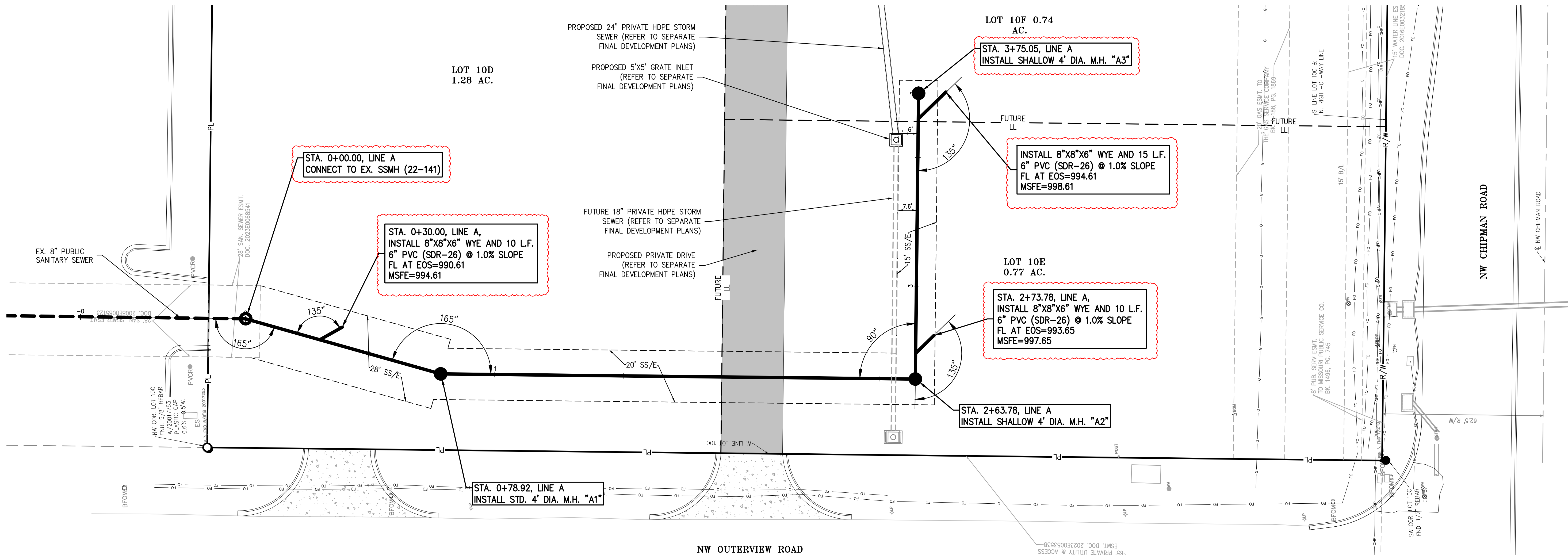


COVER SHEET
SUMMIT FAIR, LOTS 10D-10F
700 W WARD ROAD
LEE'S SUMMIT, MISSOURI

| PROJECT NO. | DATE | NO. | DATE | REVISIONS | BY | APP. |
|------------------------------|------------------------------|------------------------------|------------------------------|------------------------------|------------------------------|------------------------------|
| 240017 | 03-08-2024 | 1. | 04-04-2024 | REVISED PER CITY COMMENTS | ABB | DAF |
| DATE | CHECKED | DATE | CHECKED | DATE | CHECKED | DATE |
| 03-08-2024 | DAF | 04-04-2024 | DAF | 04-04-2024 | DAF | DAF |
| CERTIFICATE OF AUTHORIZATION | CERTIFICATE OF AUTHORIZATION | CERTIFICATE OF AUTHORIZATION | CERTIFICATE OF AUTHORIZATION | CERTIFICATE OF AUTHORIZATION | CERTIFICATE OF AUTHORIZATION | CERTIFICATE OF AUTHORIZATION |
| NUMBER | NUMBER | NUMBER | NUMBER | NUMBER | NUMBER | NUMBER |
| PE-29850 | PE-29850 | PE-29850 | PE-29850 | PE-29850 | PE-29850 | PE-29850 |
| ENGINEERING - E-SIT | ENGINEERING - E-SIT | ENGINEERING - E-SIT | ENGINEERING - E-SIT | ENGINEERING - E-SIT | ENGINEERING - E-SIT | ENGINEERING - E-SIT |
| CERTIFICATE OF AUTHORIZATION | CERTIFICATE OF AUTHORIZATION | CERTIFICATE OF AUTHORIZATION | CERTIFICATE OF AUTHORIZATION | CERTIFICATE OF AUTHORIZATION | CERTIFICATE OF AUTHORIZATION | CERTIFICATE OF AUTHORIZATION |
| 03/27/24 | 03/27/24 | 03/27/24 | 03/27/24 | 03/27/24 | 03/27/24 | 03/27/24 |
| 03/27/24 | 03/27/24 | 03/27/24 | 03/27/24 | 03/27/24 | 03/27/24 | 03/27/24 |

SHEET
SS-1

\\phelps-engineering\projects\17420017\Drawings\Sanitary\SS-2.dwg Layout1: Apr 04, 2024 - 2:25pm Daniel Finn



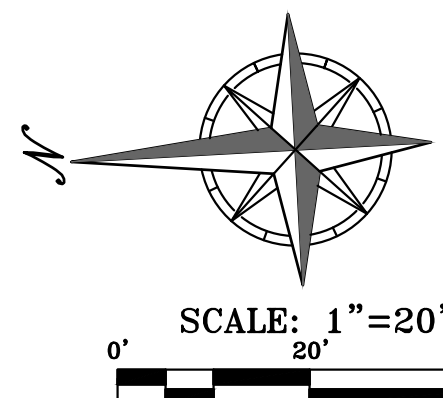
SCALE: 1"=20' HORIZ.
1"= 5' VERT.

RELEASED FOR CONSTRUCTION
As Noted on Plan Review

Development Services Department
Lee's Summit, Missouri
07/09/2024

STRUCTURE BACKFILL NOTES:
1. CLSM SHALL BE USED TO BACKFILL AROUND STRUCTURES, SUCH AS MANHOLES, INLETS, JUNCTION BOXES, VAULTS, ETC. CLSM SHALL BE PLACED TO THE FULL DEPTH OF THE TRENCH BACKFILL ZONE, BUT SHALL BE AT LEAST 6 INCHES BELOW THE BOTTOM OF PREPARED SUBGRADE UNDER PAVEMENTS OR 12 INCHES BELOW THE GROUND SURFACE IN LANDSCAPED AREAS. THE EXTERNAL OPENING SURFACES OF WEAP HOLES SHALL BE COVERED WITH HARDWARE CLOTH AND SURROUNDED WITH A MINIMUM OF THREE CUBIC FEET OF CONSOLIDATED GRANULAR BEDDING MATERIAL.

MANHOLE CONNECTION NOTES:
1. THE EXISTING MANHOLE WALL SHALL BE CORE DRILLED.
2. A FLEXIBLE PIPE-TO-MANHOLE CONNECTOR SHALL BE INSTALLED AS SHOWN IN THE STANDARD DRAWINGS.



PHILIPS ENGINEERING, INC.
1270 N. Winchester
Olathe, Kansas 66061
(913) 393-1155
Fax (913) 393-1165
www.philipsengineering.com

**PLANNING
ENGINEERING
IMPLEMENTATION**

SANITARY SEWER PLAN & PROFILE

SUMMIT FAIR, LOTS 10D-10F
700 W WARD ROAD
LEE'S SUMMIT, MISSOURI

| PROJECT NO. | 240017 | DATE | 04-04-2024 | BY | APP. |
|------------------------------|--------|----------|------------|-----|------|
| CHECKED | DAF | APPROVED | DAF | ABB | DAF |
| CERTIFICATE OF AUTHORIZATION | | | | | |
| LAND SURVEYING - LS-82 | | | | | |
| ENGINEERING - E-361 | | | | | |
| CERTIFICATE OF AUTHORIZATION | | | | | |
| LAND SURVEYING-20070128 | | | | | |
| ENGINEERING-20070028 | | | | | |

SHEET

SS-2

\\phelps-server\projects\p\240017\Drawings\sanitary plans\EROSION.dwg Layout:1 Apr 04, 2024 - 2:22pm Donita Firm

RELEASED FOR CONSTRUCTION
As Noted on Plan Review

Development Services Department
Lee's Summit, Missouri

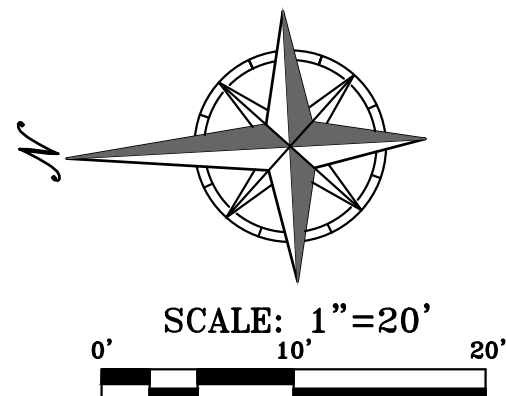
07/09/2024

NOTE: FLOWABLE FILL IS REQUIRED
AROUND ALL STORM STRUCTURES.

DISTURBED AREA = 0.2± ACRES

LEGEND

- LIMITS OF DISTURBED AREA
- - - - - PROPOSED SILT FENCE

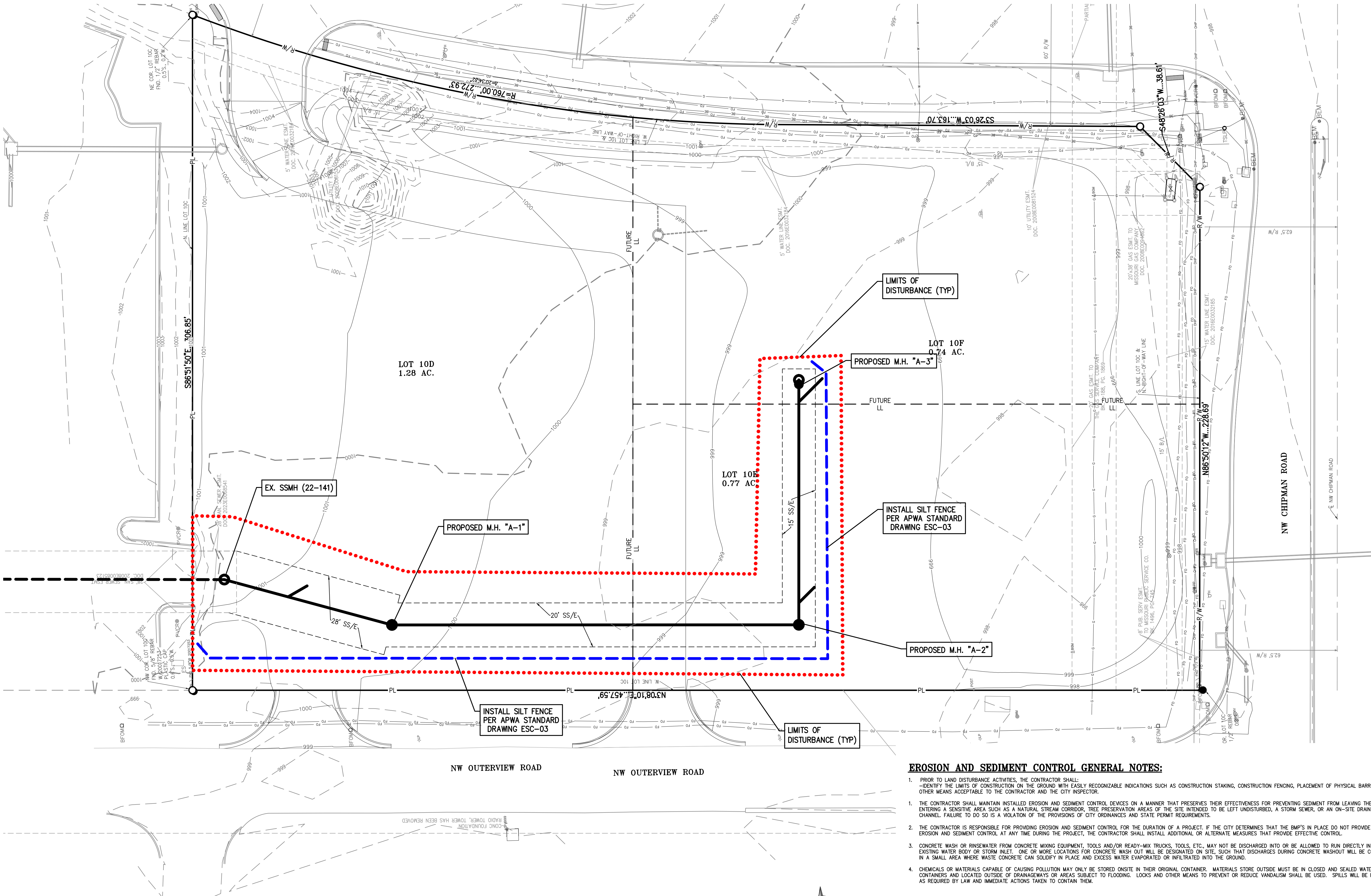


EROSION AND SEDIMENT CONTROL GENERAL NOTES:

- PRIOR TO LAND DISTURBANCE ACTIVITIES, THE CONTRACTOR SHALL:
- IDENTIFY THE LIMITS OF CONSTRUCTION ON THE GROUND WITH EASILY RECOGNIZABLE INDICATIONS SUCH AS CONSTRUCTION STAKING, CONSTRUCTION FENCING, PLACEMENT OF PHYSICAL BARRIERS OR OTHER MEANS ACCEPTABLE TO THE CONTRACTOR AND THE CITY INSPECTOR.
- THE CONTRACTOR SHALL MAINTAIN INSTALLED EROSION AND SEDIMENT CONTROL DEVICES ON A MANNER THAT PRESERVES THEIR EFFECTIVENESS FOR PREVENTING SEDIMENT FROM LEAVING THE SITE OR ENTERING A SENSITIVE AREA SUCH AS A NATURAL STREAM CORRIDOR, TREE PRESERVATION AREAS OF THE SITE INTENDED TO BE LEFT UNDISTURBED, A STORM SEWER, OR AN ON-SITE DRAINAGE CHANNEL. FAILURE TO DO SO IS A VIOLATION OF THE PROVISIONS OF CITY ORDINANCES AND STATE PERMIT REQUIREMENTS.
- THE CONTRACTOR IS RESPONSIBLE FOR PROVIDING EROSION AND SEDIMENT CONTROL FOR THE DURATION OF A PROJECT. IF THE CITY DETERMINES THAT THE BMP'S IN PLACE DO NOT PROVIDE ADEQUATE EROSION AND SEDIMENT CONTROL AT ANY TIME DURING THE PROJECT, THE CONTRACTOR SHALL INSTALL ADDITIONAL OR ALTERNATE MEASURES THAT PROVIDE EFFECTIVE CONTROL.
- CONCRETE WASH OR RINSEWATER FROM CONCRETE MIXING EQUIPMENT, TOOLS AND/OR READY-MIX TRUCKS, TOOLS, ETC., MAY NOT BE DISCHARGED INTO OR BE ALLOWED TO RUN DIRECTLY INTO ANY EXISTING WATER BODY OR STORM INLET. ONE OR MORE LOCATIONS FOR CONCRETE WASH OUT WILL BE DESIGNATED ON SITE, SUCH THAT DISCHARGES DURING CONCRETE WASHOUT WILL BE CONTAINED IN A SMALL AREA WHERE WASTE CONCRETE CAN SOLIDIFY IN PLACE AND EXCESS WATER EVAPORATED OR INFILTRATED INTO THE GROUND.
- CHEMICALS OR MATERIALS CAPABLE OF CAUSING POLLUTION MAY ONLY BE STORED ONSITE IN THEIR ORIGINAL CONTAINER. MATERIALS STORE OUTSIDE MUST BE IN CLOSED AND SEALED WATER-PROOF CONTAINERS AND LOCATED OUTSIDE OF DRAINAGEWAYS OR AREAS SUBJECT TO FLOODING. LOCKS AND OTHER MEANS TO PREVENT OR REDUCE VANDALISM SHALL BE USED. SPILLS WILL BE REPORTED AS REQUIRED BY LAW AND IMMEDIATE ACTIONS TAKEN TO CONTAIN THEM.

MAINTENANCE: ALL MEASURES STATED ON THIS EROSION AND SEDIMENT CONTROL PLAN SHALL BE MAINTAINED IN FULLY FUNCTIONAL CONDITION UNTIL NO LONGER REQUIRED FOR A COMPLETED PHASE OF WORK OR FINAL STABILIZATION OF THE SITE. ALL EROSION AND SEDIMENTATION CONTROL MEASURES SHALL BE CHECKED BY A QUALIFIED PERSON IN ACCORDANCE WITH THE CONTRACT DOCUMENTS OR THE APPLICABLE PERMIT, WHICHEVER IS MORE STRINGENT, AND REPAIRED IN ACCORDANCE WITH THE FOLLOWING:

- INLET PROTECTION DEVICES AND BARRIERS SHALL BE REPAIRED OR REPLACED IF THEY SHOW SIGNS OF UNDERMINING, OR DETERIORATION.
- ALL SEEDED AREAS SHALL BE CHECKED REGULARLY TO SEE THAT A GOOD STAND IS MAINTAINED. AREAS SHOULD BE FERTILIZED, WATERED, AND RESEEDED AS NEEDED.
- SILT FENCES SHALL BE REPAIRED TO THEIR ORIGINAL CONDITIONS IF DAMAGED. SEDIMENT SHALL BE REMOVED FROM THE SILT FENCES WHEN IT REACHES ONE-THIRD THE HEIGHT OF THE SILT FENCE.
- THE CONSTRUCTION ENTRANCES SHALL BE MAINTAINED IN A CONDITION WHICH WILL PREVENT TRACKING OR FLOW OF MUD ONTO PUBLIC RIGHTS-OF-WAY. THIS MAY REQUIRE PERIODIC TOP DRESSING OF THE CONSTRUCTION ENTRANCES AS CONDITIONS DEMAND.
- THE TEMPORARY PARKING AND STORAGE AREA SHALL BE KEPT IN GOOD CONDITION (SUITABLE FOR PARKING AND STORAGE). THIS MAY REQUIRE PERIODIC TOP DRESSING OF THE TEMPORARY PARKING AS CONDITIONS DEMAND.



| PROJECT NO. | 240017 | No. | Date | Revisions: | By | App. |
|------------------------------|------------|-----|------------|---------------------------|-----|------|
| DATE | 03-08-2024 | 1. | 04-04-2024 | REVISED PER CITY COMMENTS | ABB | DAF |
| CHECKED | DAF | | | | | |
| APPROVED | DAF | | | | | |
| CERTIFICATE OF AUTHORIZATION | | | | | | |
| LAND SURVEYING - LS-82 | | | | | | |
| ENGINEERING - E-361 | | | | | | |
| CERTIFICATE OF AUTHORIZATION | | | | | | |
| LAND SURVEYING-200701028 | | | | | | |
| ENGINEERING-200700328 | | | | | | |

SHEET

SS-3

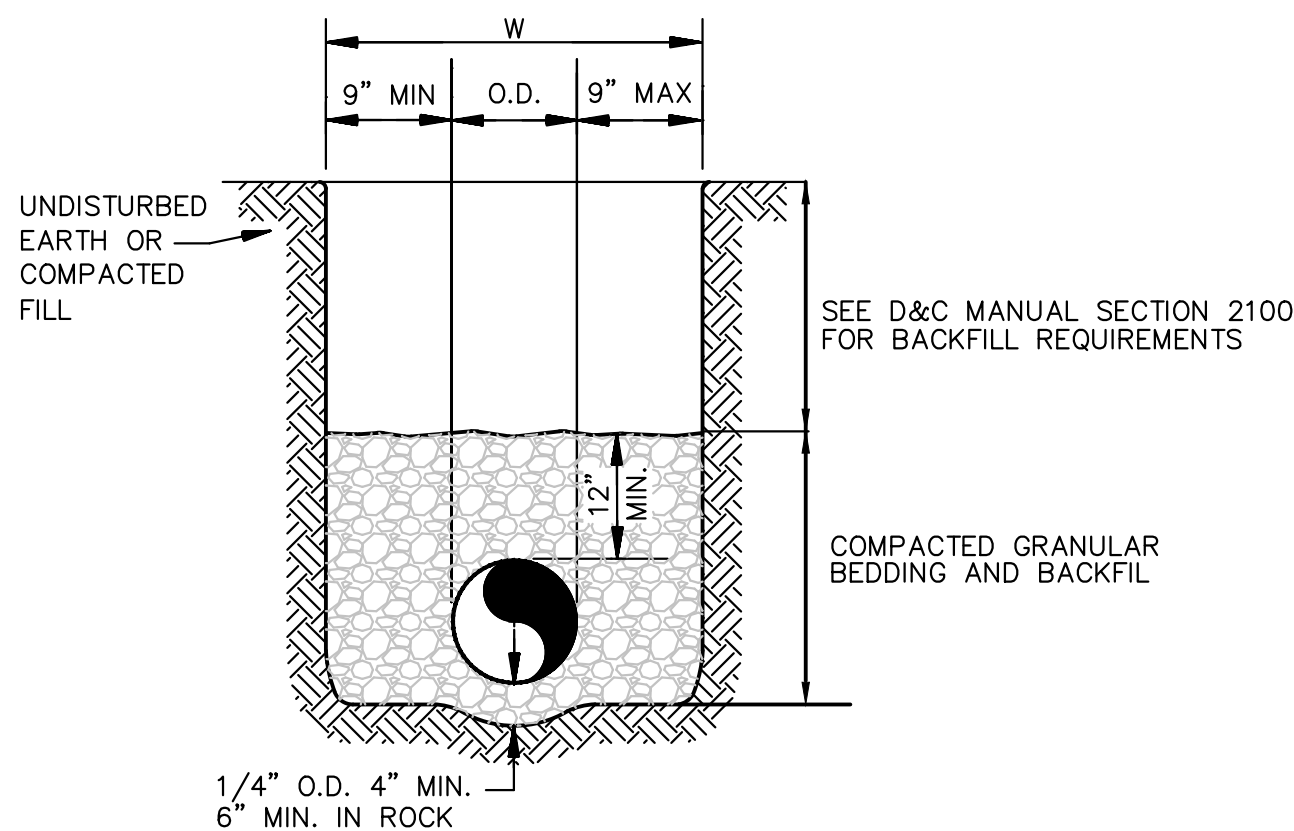
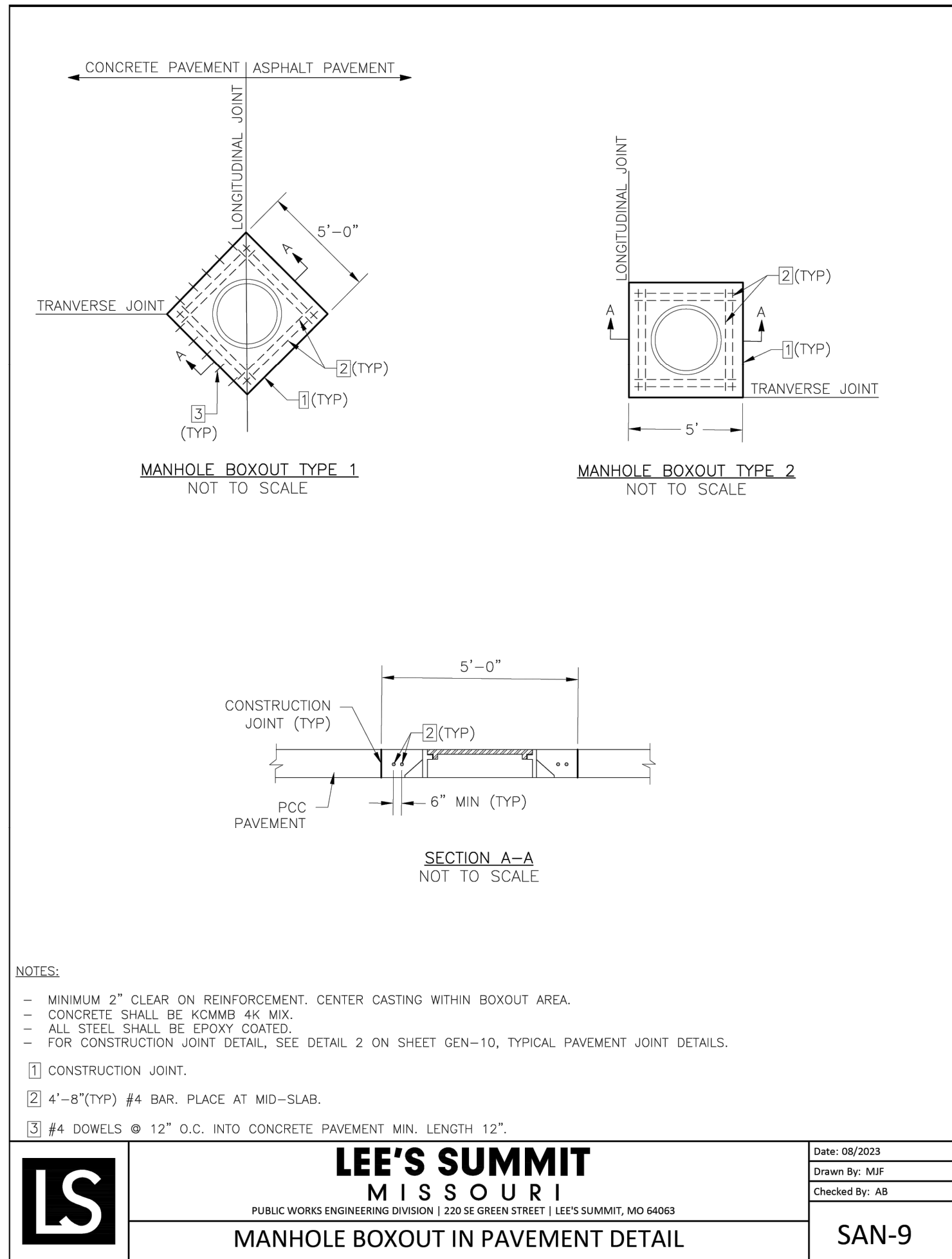
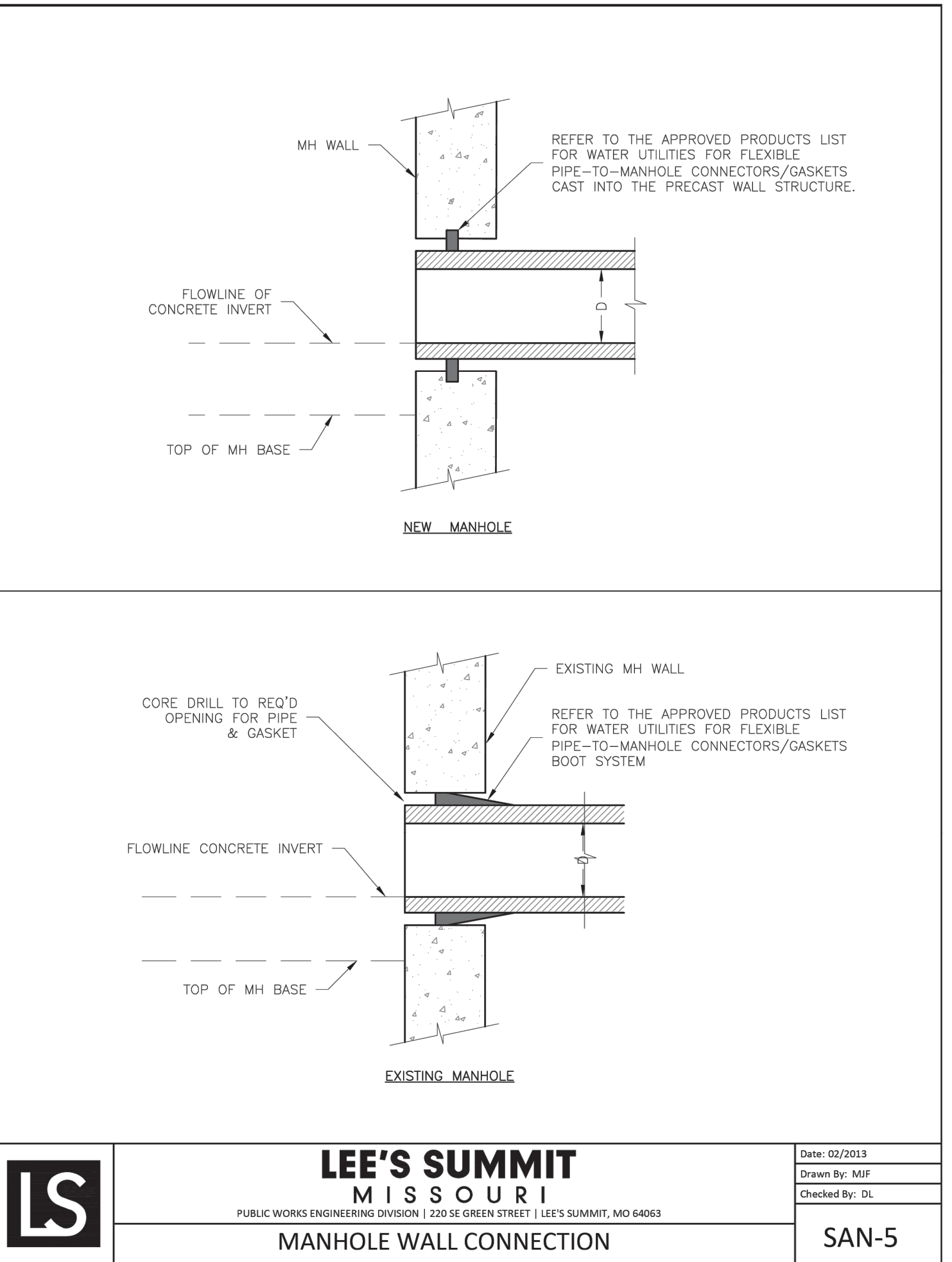
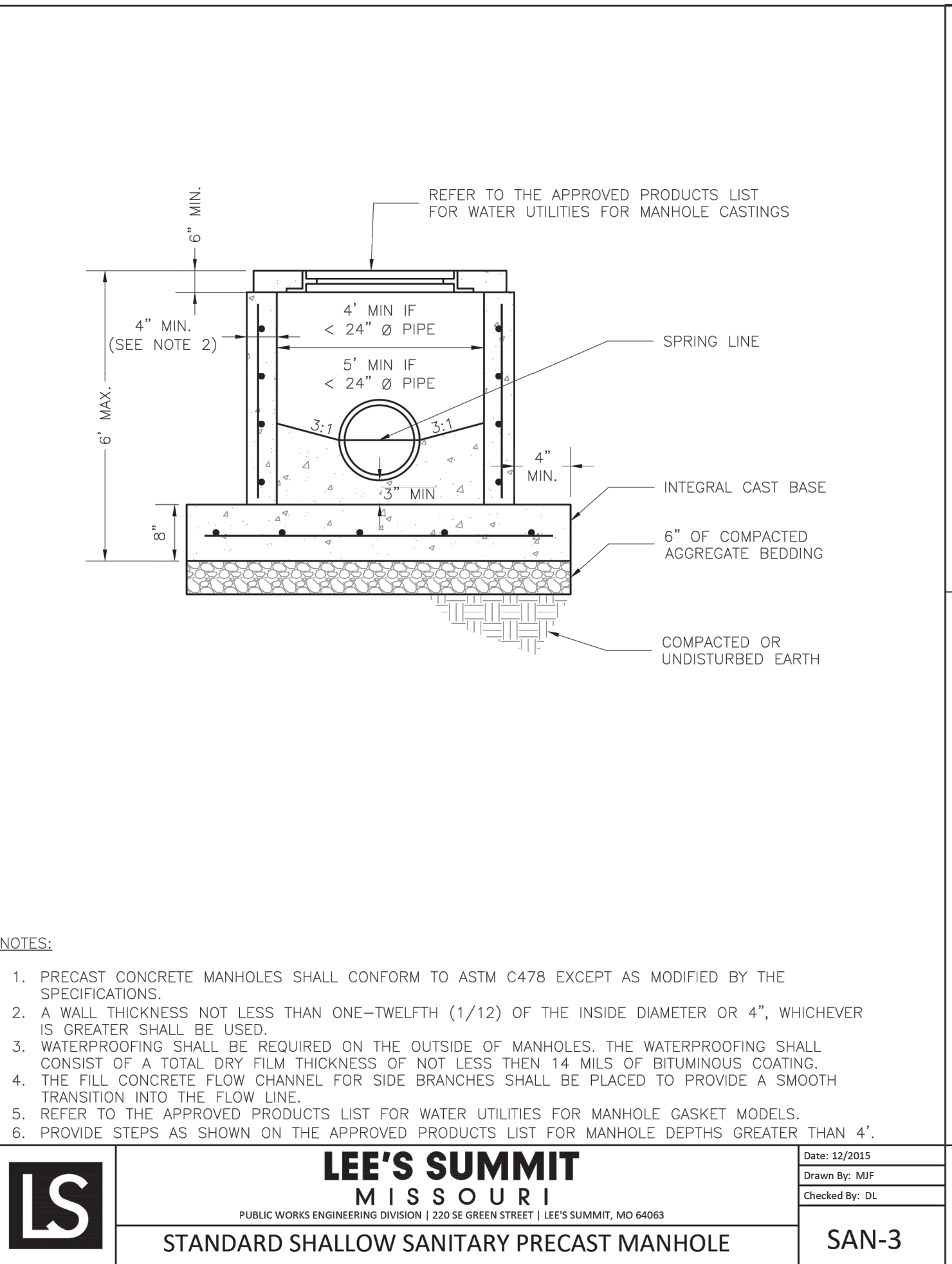
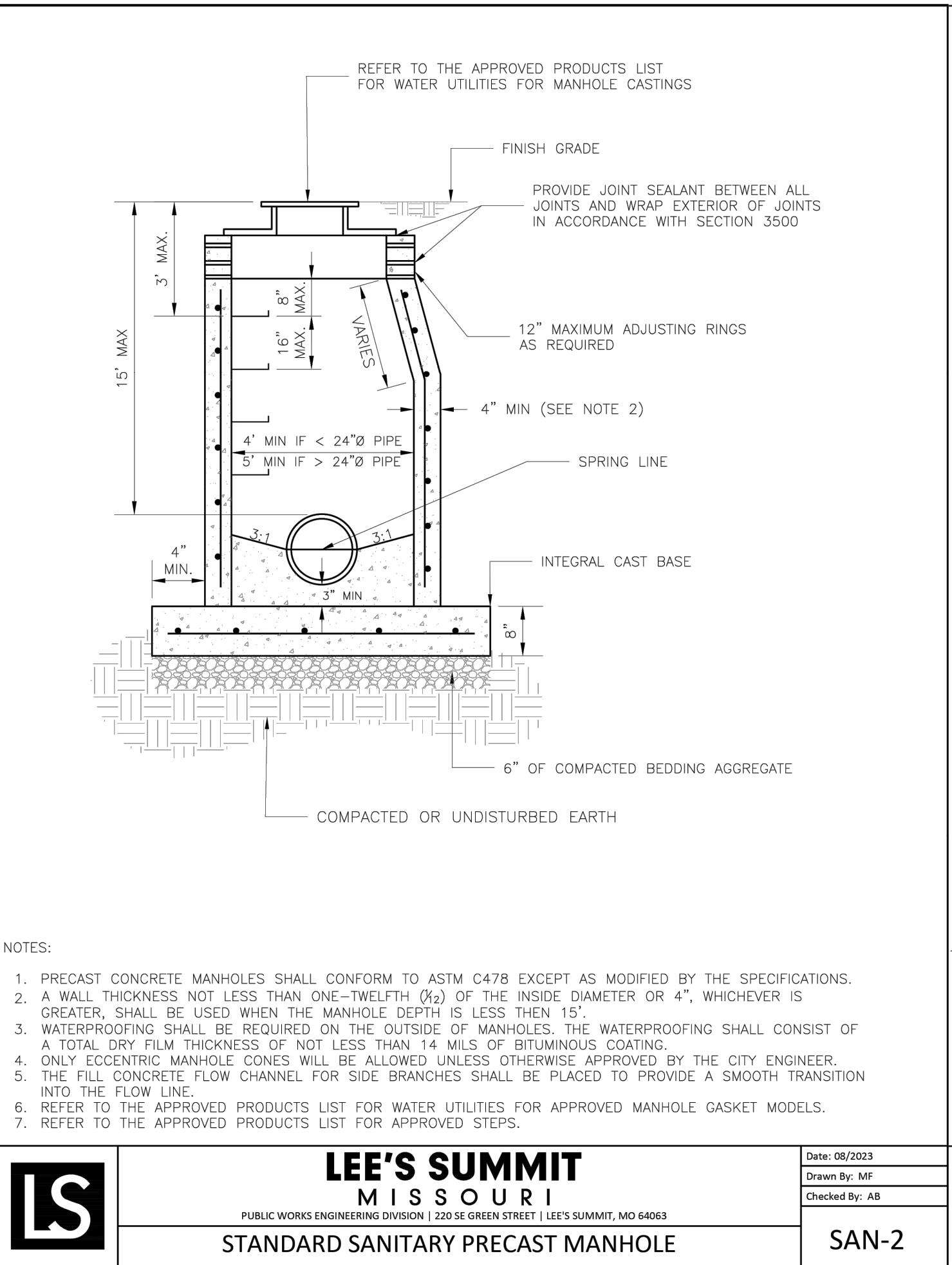
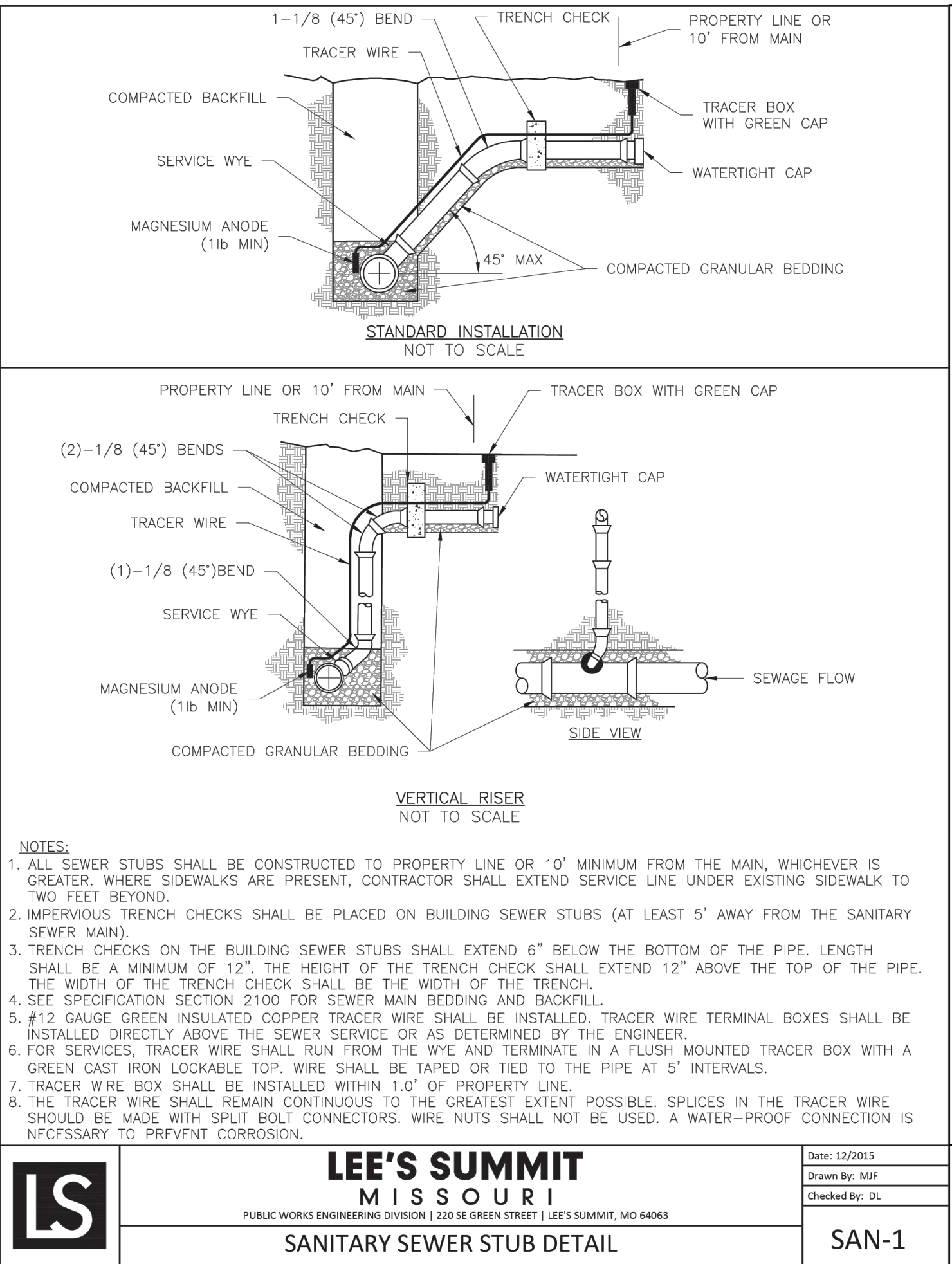
EROSION CONTROL PLAN
SUMMIT FAIR, LOTS 10D-10F
700 W WARD ROAD
LEE'S SUMMIT, MISSOURI



PLANNING
ENGINEERING
IMPLEMENTATION

PHELPS ENGINEERING, INC.
1270 N. Winchester
Olathe, Kansas 66061
(913) 993-1155
Fax (913) 993-1165
www.phelpsen지니어링.com





SANITARY SEWER - PVC (SDR-26)
SCALE: NOT TO SCALE

PIPE INSTALLATION DETAIL

RELEASED FOR CONSTRUCTION
As Noted on Plan Review
Development Services Department
Lee's Summit, Missouri
07/09/2024



PHILIPS ENGINEERING, INC.
1370 N. Winchester
Olathe, Kansas 66061
(913) 393-1155
Fax (913) 393-1165
www.philipsengineering.com
PLANNING
ENGINEERING
IMPLEMENTATION
PEI

SANITARY SEWER DETAILS
SUMMIT FAIR, LOTS 10D-10F
700 W WARD ROAD
LEE'S SUMMIT, MISSOURI

| PROJECT NO. | No. | Date | Revisions: | By | App |
|------------------------------|-----|------------|---------------------------|-----|-----|
| 240017 | 1. | 04-04-2024 | REVISED PER CITY COMMENTS | ABB | DAF |
| DATE: 03-08-2024 DRAWN: ABB | | | | | |
| CHECKED: DAF APPROVED: DAF | | | | | |
| CERTIFICATE OF AUTHORIZATION | | | | | |
| LAND SURVEYING - LS-82 | | | | | |
| ENGINEERING - ES-82 | | | | | |
| DIVISION OF AUTHORIZATION | | | | | |
| MEASUREMENT | | | | | |
| DRAWING NO. 2007002509 | | | | | |
| ECON. CEN. 2007002509 | | | | | |