

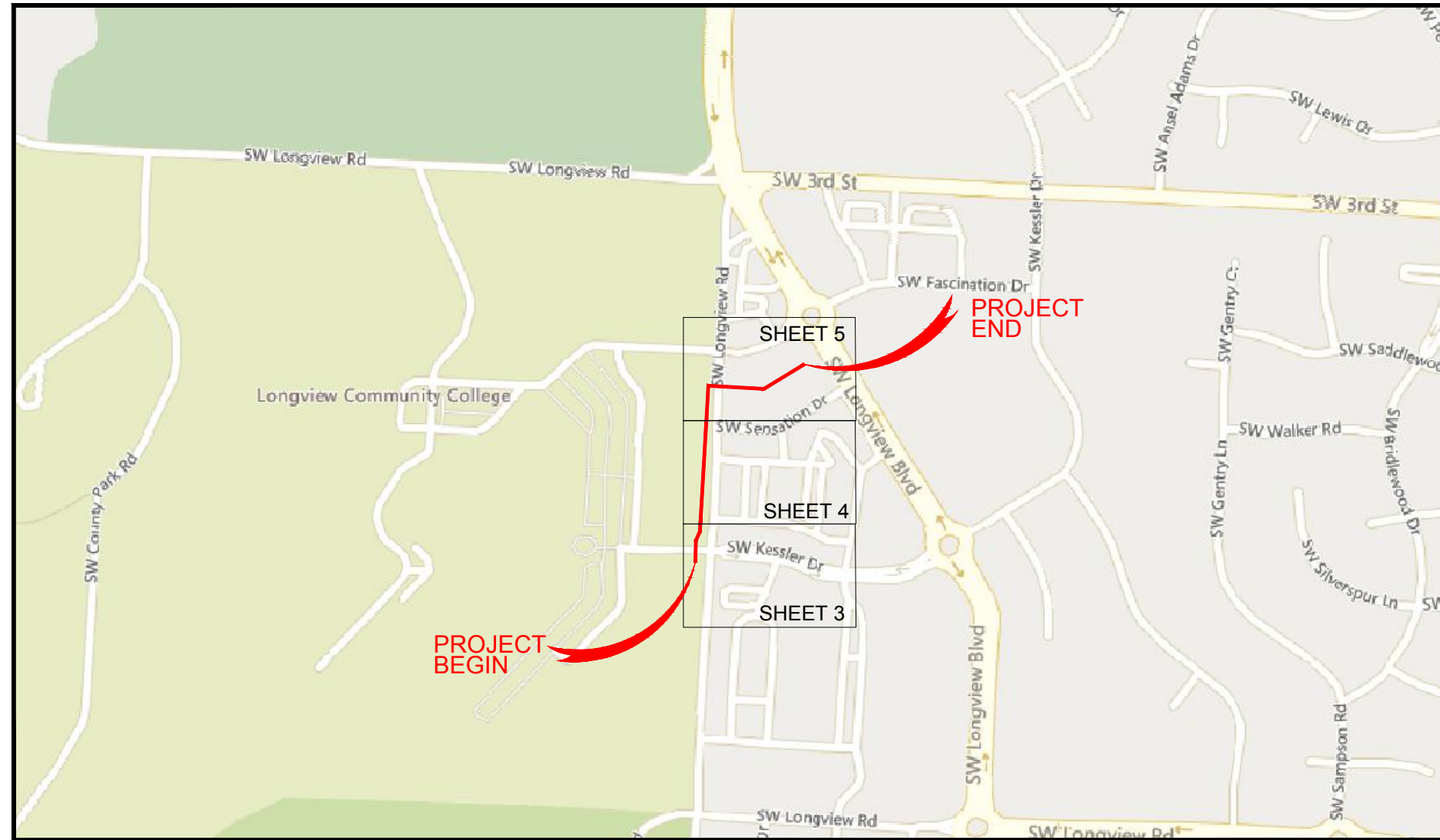
# ADDRESS: 400 SW LONGVIEW BLVD, LEE'S SUMMIT, MO 64081

## PROJECT NUMBER: 50384

**JOB 7553**

**WORK PLAN INDEX**

SHEET	DESCRIPTION
1	COVER SHEET
2	GENERAL NOTES/LEGEND
3-5	DESIGN PLAN SHEETS
6-7	DETAIL SHEET
8	TYPICAL DETAILS
9	FINAL QUANTITIES



VICINITY MAP

**CONTACT INFO**

RYAN CATRON  
CONSTRUCTION MANAGER  
816-381-0967  
RYAN.CATRON@UPNFIBER.COM

ADAM GRACE  
CONSTRUCTION TECHNICIAN  
816-730-1066  
ADAM.GRACE@UPNFIBER.COM



NOT TO SCALE



REV. NO.	DATE	REVISIONS DESCRIPTION

COVER SHEET	
400 SW LONGVIEW BLVD	
LEE'S SUMMIT, MO	2024

drawn by:	JMF
checked by:	APL
approved by:	JMC
project no.:	50384
drawing no.:	UPN-77
date:	6/29/2024

DWG: F:\2024\00001-00500\024-00009\40-design\AutoCAD\msa\_phases\unite-77\_400 sw longview blvd\Final Plans\UPN-77\_400 SW LONGVIEW BLVD\_Final Plans.dwg  
 DATE: Jun 29, 2024 1:26pm  
 USER: avellani

LEGEND-KEY			
	UTILITY POLE		GAS
	UTILITY MANHOLE		WATER
	UTILITY HANDHOLE		TELEPHONE
	TELEPHONE PED - CROSS BOX		ELECTRIC
	EXISTING MANHOLE		SANITARY SEWER (SEW)
	EXISTING HANDHOLE		STORM SEWER
	EXISTING COIL		FENCE
	EXISTING AERIAL COIL		CABLE TV
	EXISTING DOWN GUY		STEAM
	EXISTING SPLICE POINT		OIL
	TREE		UNKNOWN UTILITY
	PROPOSED MANHOLE		RIGHT OF WAY
	PROPOSED HANDHOLE		EDGE OF PAVEMENT
	PROPOSED COIL		PROPERTY LINE
	PROPOSED AERIAL COIL		UTILITY EASEMENT
	PROPOSED DOWN GUY		WATER EASEMENT
	PROPOSED SPLICE POINT		EXISTING CONDUIT
	PROPOSED FIBER DISTRIBUTION PANEL		EXISTING AERIAL FIBER
	PROPOSED BORE PIT		EXISTING STRAND
	PROPOSED PULL BOX		PROPOSED CONDUIT
	PROPOSED RUNNING LINE		PROPOSED AERIAL FIBER
	FLOW LINE		PROPOSED STRAND
	FIBER OPTIC CABLE		
	EDGE OF PAVEMENT		
	CUT & RESTORE CONC./ASPH.		
	INLET		
	INLET GRATE		

1. CONTRACTOR MUST OBTAIN LOCATES PRIOR TO ANY TYPE OF EXCAVATION.
2. CONTRACTOR IS RESPONSIBLE FOR OBTAINING THE NECESSARY REQUIRED PERMITS PERTAINING TO ALL ASPECTS OF THE PROJECT AND MUST HAVE THE APPROPRIATE PERMITS AT THE JOB SITE.
3. ALL CABLE WILL BE PLACED AT STANDARD MINIMUM DEPTH OF 36" IN UNPAVED AREAS AND 48" MINIMUM BELOW STREETS AT ALL TIMES, UNLESS OTHERWISE NOTED IN THE PLANS.
4. ANY LANDSCAPING WILL BE REPLACED TO EQUAL OR BETTER THAN THAT WHICH EXISTED PRIOR TO WORK.
5. PROJECT SITE WILL BE PROPERLY SECURED PRIOR TO THE END OF EACH DAY.
6. ALL WORK IS TO BE IN ACCORDANCE WITH AUTHORITIES HAVING JURISDICTION IN THE WORK ZONE.
7. CONTRACTORS ARE ADVISED TO CONTACT UPN FOR ANY ADDITIONAL INFORMATION OR CLARIFICATION CONCERNING SCOPE OF WORK OR THE REQUIREMENTS NECESSARY FOR PROJECT COMPLETION.
8. ANY FIELD ADJUSTMENTS TO THE PROPOSED PLAN MUST BE APPROVED BY AN APPROPRIATE UPN REPRESENTATIVE.
9. BEFORE CONSTRUCTION BEGINS, CONTRACTOR SHALL TAKE THE APPROPRIATE PRECAUTIONS TO AVOID ANY POTENTIAL OBSTRUCTIONS PRIOR TO PROCEEDING WITH WORK.
10. OLSSON ASSUMES NO RESPONSIBILITY FOR EXISTING UTILITY LOCATIONS (HORIZONTAL OR VERTICAL) OR RIGHT-OF-WAY LOCATION. THE EXISTING UTILITIES AND RIGHT-OF-WAY SHOWN ON THESE PLANS HAVE BEEN PLOTTED FROM THE BEST INFORMATION AVAILABLE. IT IS HOWEVER, THE RESPONSIBILITY OF THE CONTRACTOR TO FIELD VERIFY THE LOCATION OF ALL UTILITIES AND RIGHT-OF-WAY PRIOR TO COMMENCEMENT OF ANY CONSTRUCTION.



7301 West 133rd Street, Suite 200  
Overland Park, KS 66213-4750  
TEL: 913.381.1170  
FAX: 913.381.1174  
www.olsson.com

REV. NO.	DATE	REVISIONS DESCRIPTION

GENERAL NOTES/LEGEND

400 SW LONGVIEW BLVD

LEE'S SUMMIT, MO

2024

drawn by: JMF

checked by: AFV

approved by: JMC

project no.: 50384

drawing no.: UPN-77

date: 6/29/2024

SHEET

2 OF 9



DWG: F:\2024\00001-00500\024-00009\40-design\AutoCAD\msa\_phases\unite-77\_400 sw longview blvd\Final Plans\UPN-77\_400 SW LONGVIEW BLVD\_Final Plans.dwg  
 DATE: Jun 29, 2024 1:27pm  
 USER: avellani  
 XREFS: UPN-77\_400 SW LONGVIEW BLVD\_BASE

MATCH TO SHEET 4

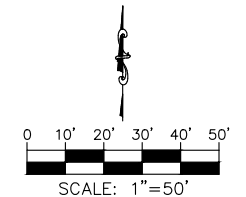


EXISTING HANDHOLE 1



PROPOSED PATH 2

NOTE: PORTION OF THIS DESIGN IS ON PRIVATE PROPERTY. THE CONTRACTOR SHALL VERIFY RIGHT OF ENTRY PRIOR TO ANY CONSTRUCTION.



**olsson**  
 7301 West 133rd Street, Suite 200  
 Overland Park, KS 66213-4750  
 TEL 913.381.1170  
 FAX 913.381.1174  
 www.olsson.com



REV. NO.	DATE	REVISIONS DESCRIPTION

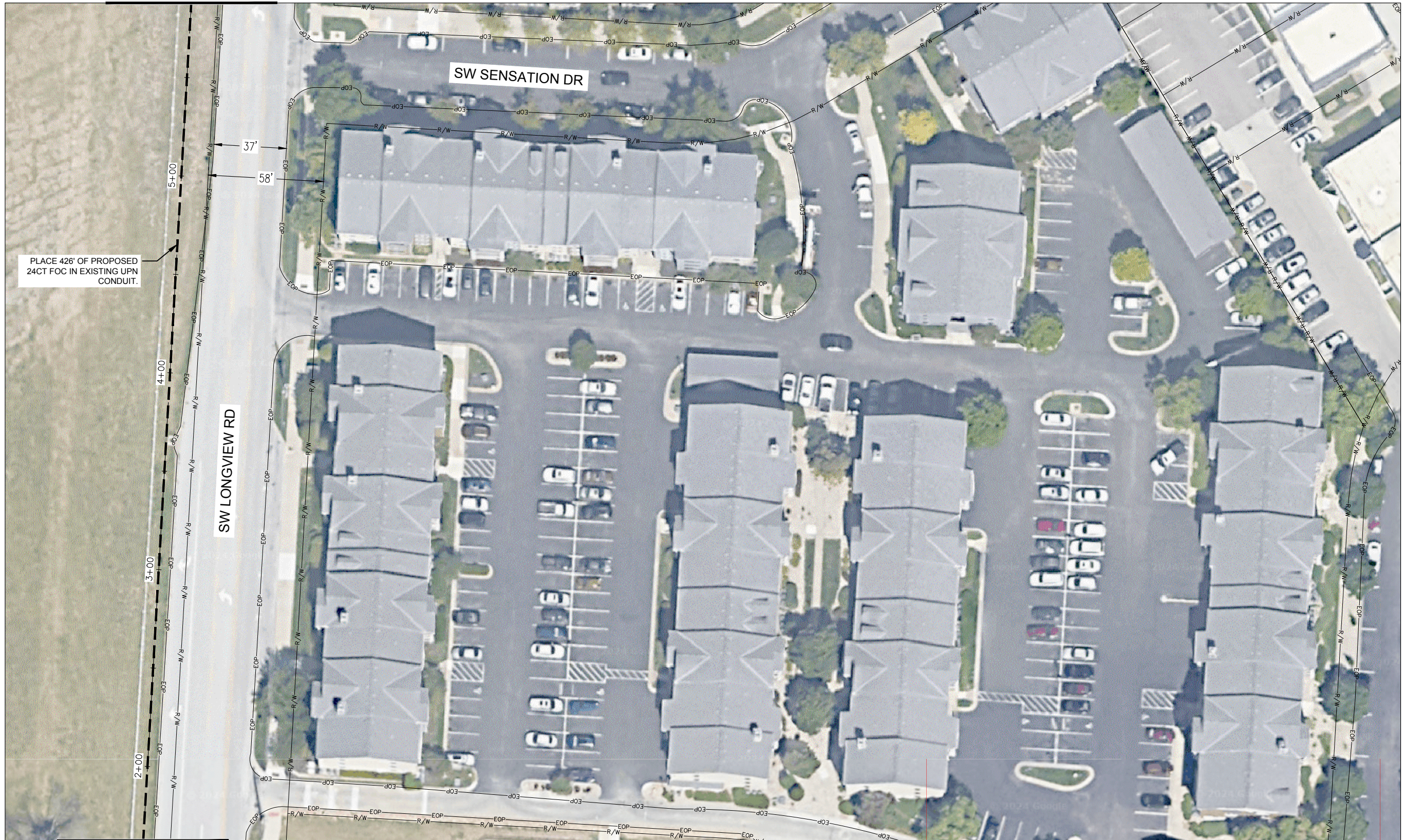
PROJECT SHEET  
 400 SW LONGVIEW BLVD  
 LEE'S SUMMIT, MO  
 2024

drawn by: JMF  
 checked by: AFV  
 approved by: JMC  
 project no.: 50384  
 drawing no.: UPN-77  
 date: 6/29/2024  
**SHEET**  
 3 OF 9



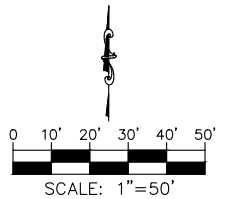
DWG: F:\2024\00001-00500\024-00009\40-design\AutoCAD\msa\_phases\unite-77\_400\_sw\_longview Blvd\_Final\_Plans.dwg  
 DATE: Jun 29, 2024 1:27pm  
 USER: avellani

MATCH TO SHEET 5



MATCH TO SHEET 3

NOTE: PORTION OF THIS DESIGN IS ON PRIVATE PROPERTY. THE CONTRACTOR SHALL VERIFY RIGHT OF ENTRY PRIOR TO ANY CONSTRUCTION.



**olsson**  
 7301 West 133rd Street, Suite 200  
 Overland Park, KS 66214-7750  
 TEL 913.381.1170  
 FAX 913.381.1174  
 www.olsson.com



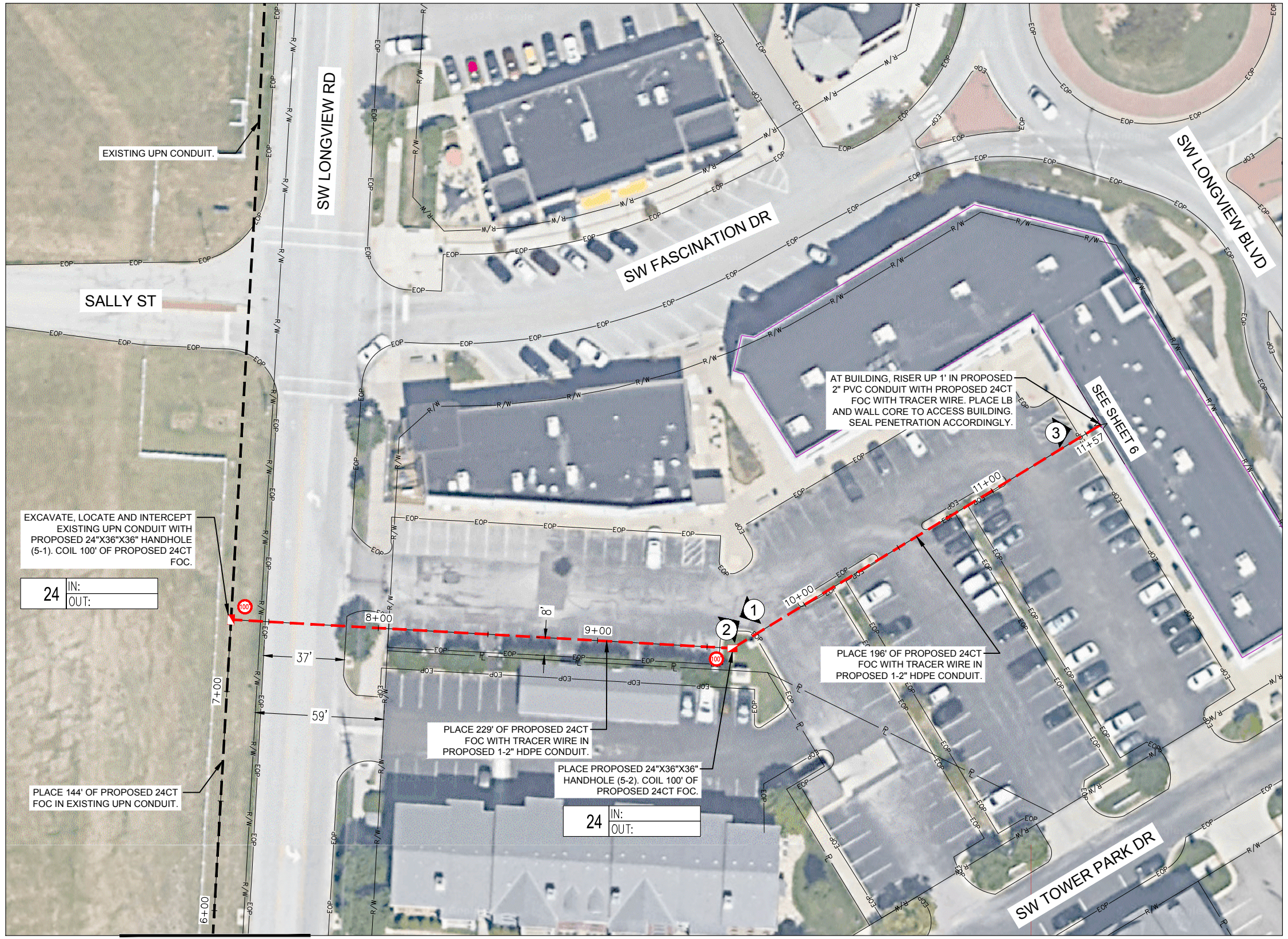
REV. NO.	DATE	REVISIONS DESCRIPTION

PROJECT SHEET	2024
400 SW LONGVIEW BLVD	
LEE'S SUMMIT, MO	
drawn by: JMF	
checked by: AFV	
approved by: JMC	
project no.: 50384	
drawing no.: UPN-77	
date: 6/29/2024	
<b>SHEET</b>	
<b>4 OF 9</b>	

REVISIONS



DWG: F:\2024\00001-00500\024-00009\40-design\AutoCAD\mso\_phases\unite-77\_400\_sw\_longview\_bldv\_Final\_Plans.dwg  
DATE: Jun 29, 2024 1:27pm XREFS: UPN-77\_400\_SW\_LONGVIEW\_BLDV\_BASE USER: avellani



MATCH TO SHEET 4

NOTE: PORTION OF THIS DESIGN IS ON PRIVATE PROPERTY. THE CONTRACTOR SHALL VERIFY RIGHT OF ENTRY PRIOR TO ANY CONSTRUCTION.



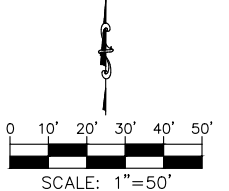
PROPOSED PATH 1



PROPOSED PATH 2



BUILDING ENTRY 3

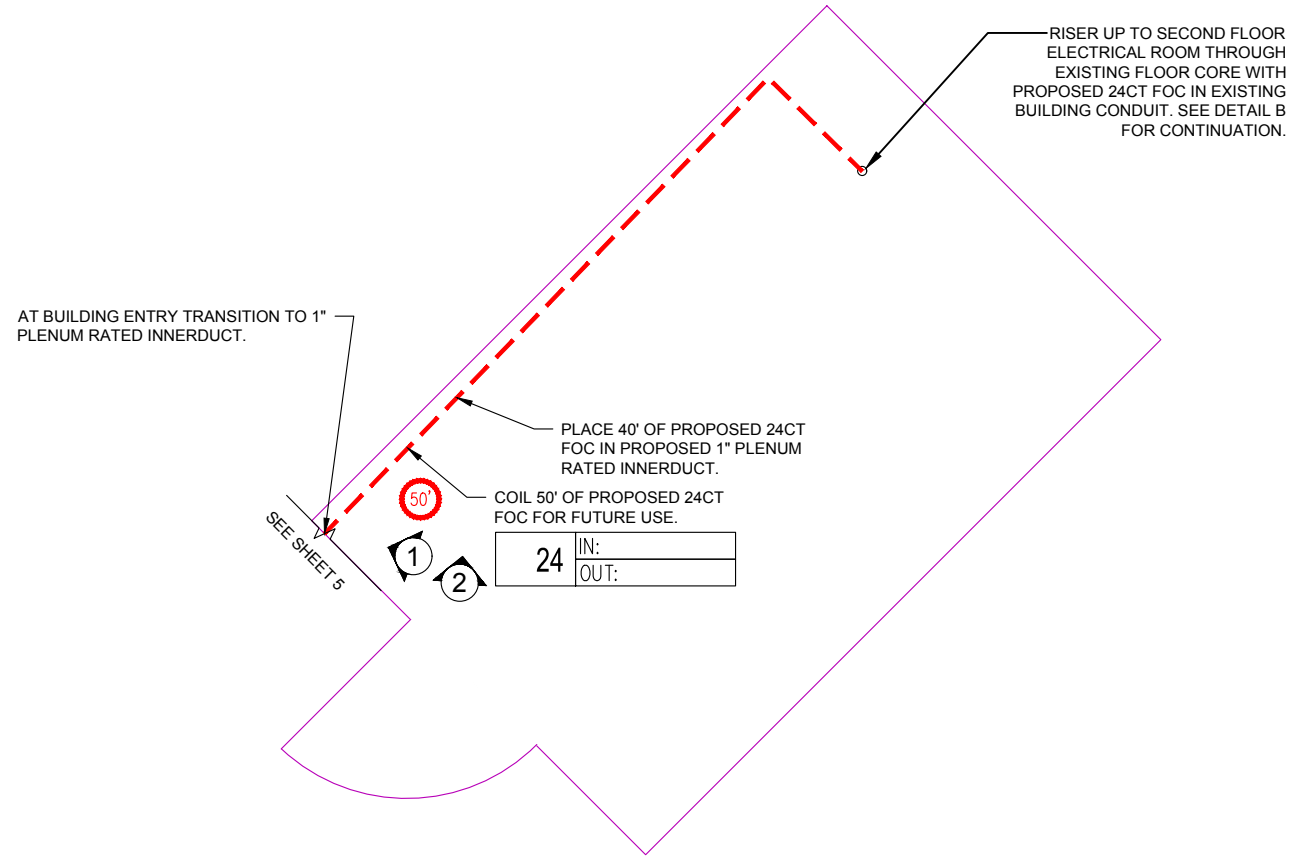


REV. NO.	DATE	REVISIONS DESCRIPTION



DWG: F:\2024\00001-00500\024-00009\40-design\AutoCAD\msa\_phases\unite-77\_400\_sw\_longview\_bld\Final Plans\UPN-77\_400\_sw\_longview\_bld\Final Plans.dwg  
 DATE: Jun 29, 2024 1:27pm USER: avellani

# DETAILS



DETAIL A (ISP PLAN)  
 FIRST FLOOR DATA CLOSET  
 NTS



BUILDING ENTRY 1



PROPOSED PATH 2

**olsson**  
 7301 West 133rd Street, Suite 200  
 Overland Park, KS 66214-7750  
 TEL: 913.381.1170  
 FAX: 913.381.1174  
 www.olsson.com



REV. NO.	DATE	REVISIONS DESCRIPTION

REVISIONS

DETAIL SHEET	2024
400 SW LONGVIEW BLVD	
LEE'S SUMMIT, MO	

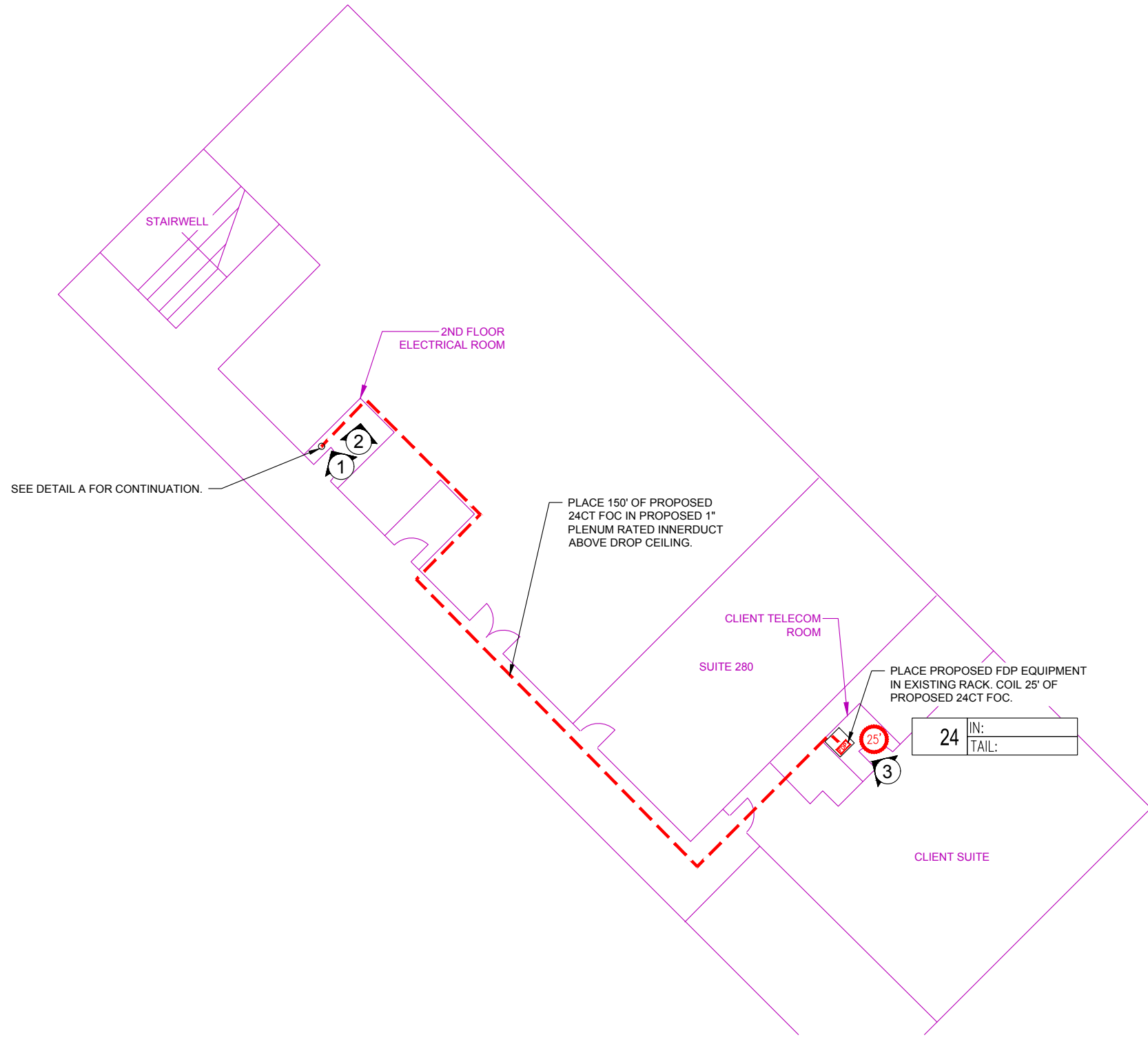
drawn by: JMF  
 checked by: APL  
 approved by: JMC  
 project no.: 50384  
 drawing no.: UPN-77  
 date: 6/29/2024





DWG: F:\2024\00001-00500\024-00009\40-design\AutoCAD\msa\_phases\unite-77\_400 sw longview blvd\Final Plans\UPN-77\_400 SW LONGVIEW BLVD\_Final Plans.dwg  
 DATE: Jun 29, 2024 1:27pm  
 USER: avellani

# DETAILS



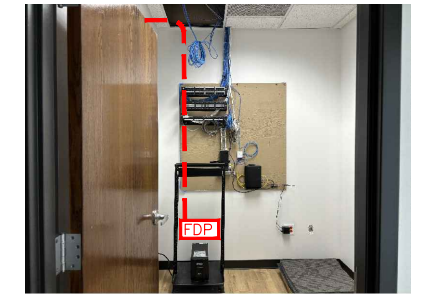
DETAIL B (ISP PLAN)  
 SECOND FLOOR, SOUTHERN HALF  
 NTS



PROPOSED PATH 1



PROPOSED PATH 2



PROPOSED FDP LOCATION 3

**olsson**  
 7301 West 133rd Street, Suite 200  
 Overland Park, KS 66214-7750  
 TEL: 913.381.1170  
 FAX: 913.381.1174  
 www.olsson.com



REV. NO.	DATE	REVISIONS DESCRIPTION

REVISIONS

DETAIL SHEET  
 400 SW LONGVIEW BLVD  
 LEE'S SUMMIT, MO  
 2024

drawn by: JMF  
 checked by: APL  
 approved by: JMC  
 project no.: 50384  
 drawing no.: UPN-77  
 date: 6/29/2024





# TYPICALS

## PCA243636-00006 PCX POLYMER CONCRETE ASSEMBLY

24" x 36" x 36"  
(For actual dimensions see drawing)

Polymer Concrete Assembly, Straight Sides, No Floor, WUC 3.6, ANSI/SCTE 77 - "T15/20K," 3/8" Hex Bolts, Standard Nameplate (Specify at time of order) Installed

**LOAD RATINGS**  
Incidental Traffic - Parking Lot, Sidewalk  
Conforms to:  
• WUC 3.6  
• ASTM C 857  
• ANSI/SCTE 77

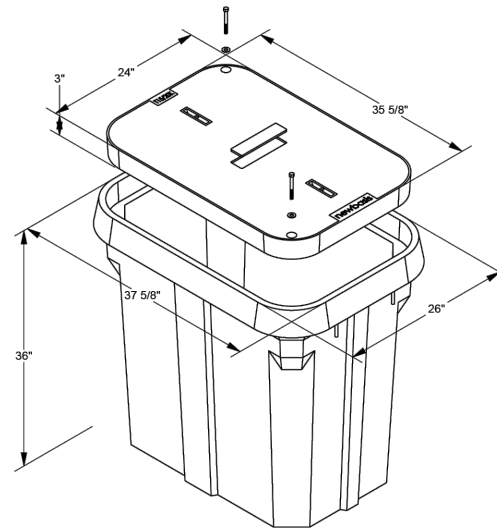
**FEATURES:**  
• Drop-in nameplate  
• Shipped assembled  
• Skid resistant cover  
• Stainless steel bolts  
• Cast-in floating nut box  
• Integral drain holes

Additional product information continued on the reverse

**newbasis**  
Composites for Infrastructure

2626 Kansas Avenue  
Riverside, California 92507  
951.787.0600  
951.787.0632 (fax)  
info@newbasis.com  
newbasis.com

**PCX**  
POLYMER CONCRETE  
The Next Generation



Inside Dimensions		
Length	Width	Depth
33 9/16"	21 15/16"	33"
27 1/8"	15 1/2"	

Rev: C.2

PCA243636-00006 PCX POLYMER CONCRETE ASSEMBLY		<b>newbasis</b>
Polymer Concrete Assembly, Straight Sides, No Floor, WUC 3.6, ANSI/SCTE 77 - "T15/20K," 3/8" Hex Bolts, Standard Nameplate (Specify at time of order) Installed		<b>24" x 36" x 36"</b> For actual dimensions, see drawing on front side.
<b>AVAILABLE OPTIONS</b> <input type="checkbox"/> Tier 22 Load Rating <input type="checkbox"/> Penta Bolts <input type="checkbox"/> Telephone EMS <input type="checkbox"/> Power EMS <input type="checkbox"/> Custom Nameplate Installed <input type="checkbox"/> Custom Nameplate Shipped Separately <input checked="" type="checkbox"/> Standard Nameplate Installed <input type="checkbox"/> Standard Nameplate Shipped Separately  <small>☑ - Indicates a selected option</small>	<b>NAMEPLATES</b> One standard nameplate included with each assembly, installed at the factory or easily installed in the field. Custom nameplates are available. Contact customer service.  <b>Standard Nameplates</b> • Electric • Telephone • Fiber Optic • Water • Street Lighting • Broadband • Traffic • CATV • Traffic Signal • Communications	
<b>MATERIAL PROPERTIES AND ATTRIBUTES</b>  <b>Compressive Strength</b> Polymer Concrete - 11500 PSI Per ASTM D695  <b>Flexural Strength</b> Polymer Concrete - 4000 PSI Per ASTM D790  <b>Coefficient of Friction (Dry)</b> <b>1.085</b> Per ASTM C1028  Polymer Concrete - Advanced composite: Very high strength to weight ratio - Non-metallic - Non-conductive - UV Resistant - High impact resistant - Impervious to chemicals and moisture  Materials tested in accordance with ASTM D-543 and ASTM D-570	<b>WEIGHTS AND SHIPPING</b>  COVER WEIGHT: 98.0 lbs. BOX WEIGHT: 330.1 lbs.  ASSEMBLY WEIGHT: 428.1 lbs. LOADED PALLET WEIGHT: 1,775 lbs.  Standard shipping includes van delivery of pallet quantities to the lower 48 states. Partial pallet quantities and flat bed shipping available at an additional cost.	<b>PACKAGING</b> (Steel Banding, Edge Protection)  PALLET QUANTITY: 4  

Rev: C.2



REV. NO.	DATE	REVISIONS DESCRIPTION

TYPICAL DETAILS	400 SW LONGVIEW BLVD	2024
	LEE'S SUMMIT, MO	

drawn by: JMF  
checked by: JMF  
approved by: JMF  
project no.: 50384  
drawing no.: UPN-77  
date: 6/29/2024

DWG: F:\2024\00001-00500\024-00009\40-design\AutoCAD\msa\_phases\unite-77\_400\_sw\_longview\_bld\Final Plans\UPN-77\_400\_SW\_LONGVIEW\_BLDV\_Final\_Plans.dwg  
 DATE: Jun 29, 2024 1:27pm  
 USER: avellani



TOTAL QUANTITIES			
ITEM	ITEM DESCRIPTION	UNITS	QUANTITY
1.	ROD & PROOF EXISTING DUCT	LF	732
2.	SUPPLY & INSTALL 1-2" HDPE DUCT	LF	425
3.	SUPPLY & INSTALL 2-2" HDPE DUCT	LF	
4.	SUPPLY & INSTALL 1-1.25" HDPE DUCT	LF	
5.	SUPPLY & INSTALL 2" PVC DUCT	LF	1
6.	SUPPLY & INSTALL 4" PVC DUCT	LF	
7.	SUPPLY & INSTALL 2" RIGID STEEL ON A STRUCTURE	LF	
8.	SUPPLY & INSTALL 3-CELL MAXCELL	LF	
9.	SUPPLY & INSTALL TRACER WIRE	LF	426
10.	SUPPLY & INSTALL 24"X36"X36" HANDHOLE	EACH	2
11.	SUPPLY & INSTALL UNDERGROUND SPLICE ENCLOSURE	EACH	
12.	INSTALL 432CT ARMORED FIBER OPTIC CABLE - UNDERGROUND	LF	
13.	INSTALL 288CT ARMORED FIBER OPTIC CABLE - UNDERGROUND	LF	
14.	INSTALL 96CT ARMORED FIBER OPTIC CABLE - UNDERGROUND	LF	
15.	LASH 432CT ARMORED FIBER OPTIC CABLE - AERIAL	LF	
16.	LASH 288CT ARMORED FIBER OPTIC CABLE - AERIAL	LF	
17.	LASH 96CT ARMORED FIBER OPTIC CABLE - AERIAL	LF	
18.	SUPPLY & INSTALL 6.6M STRAND	LF	
19.	SUPPLY & INSTALL FIBER SNOWSHOE	EACH	
20.	SUPPLY & INSTALL 2" PVC STAND OFF RISER	EACH	
21.	SUPPLY & INSTALL 4" PVC STAND OFF RISER	EACH	
22.	SUPPLY & INSTALL DOWN GUY AND ANCHOR	EACH	
23.	SUPPLY & INSTALL AERIAL SPLICE ENCLOSURE	EACH	
24.	SUPPLY & INSTALL 1" EMT CONDUIT	LF	
25.	SUPPLY & INSTALL 2" EMT CONDUIT	LF	
26.	SUPPLY & INSTALL 1" PLENUM RATED INNERDUCT	LF	190
27.	SUPPLY & INSTALL WYE CAST CONNECTOR	EACH	
28.	SUPPLY & INSTALL LB	EACH	1
29.	PROPOSED WALL CORE	EACH	1
30.	SUPPLY & INSTALL 2'X2'X3/4" PLYWOOD BACKBOARD	EACH	
31.	INSTALL 24CT INDOOR/OUTDOOR RATED FIBER OPTIC CABLE - UNDERGROUND	LF	1723
32.	INSTALL 24CT INDOOR/OUTDOOR RATED FIBER OPTIC CABLE - AERIAL	LF	
33.	REMOVE & REPLACE SIDEWALK	SQ FT	
34.	REMOVE & REPLACE ASPHALT	SQ FT	
* 35.	TRAFFIC PERMIT	AGENCIES	1
* 36.	RIGHT OF WAY PERMIT	AGENCIES	1

\* CITY, COUNTY, AND STATE.

**olsson**

7301 West 133rd Street, Suite 200  
Overland Park, KS 66213-4750  
TEL 913.381.1170  
FAX 913.381.1174  
www.olsson.com



REV. NO.	DATE	REVISIONS DESCRIPTION

**REVISIONS**

**FINAL QUANTITIES**  
 400 SW LONGVIEW BLVD  
 LEE'S SUMMIT, MO

2024



7301 West 133rd Street, Suite 200 Overland Park, KS 66213-4750  
 TEL 913.381.1170 FAX 913.381.1174 www.olsson.com



drawn by: JMF  
 checked by: AFV  
 approved by: JMC  
 project no.: 50384  
 drawing no.: UPN-77  
 date: 6/29/2024