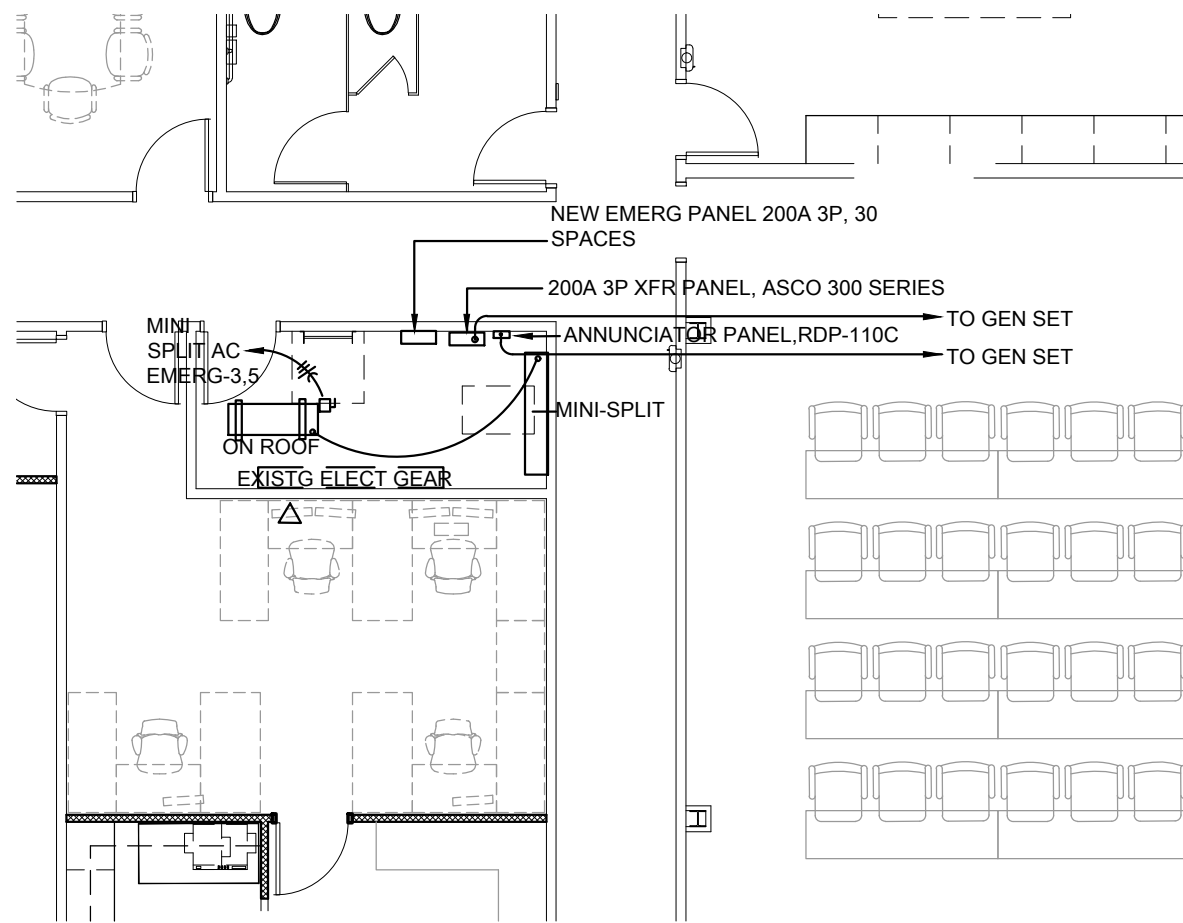


EMERG PANEL DETAIL 5
SCALE: NTS GS1-0

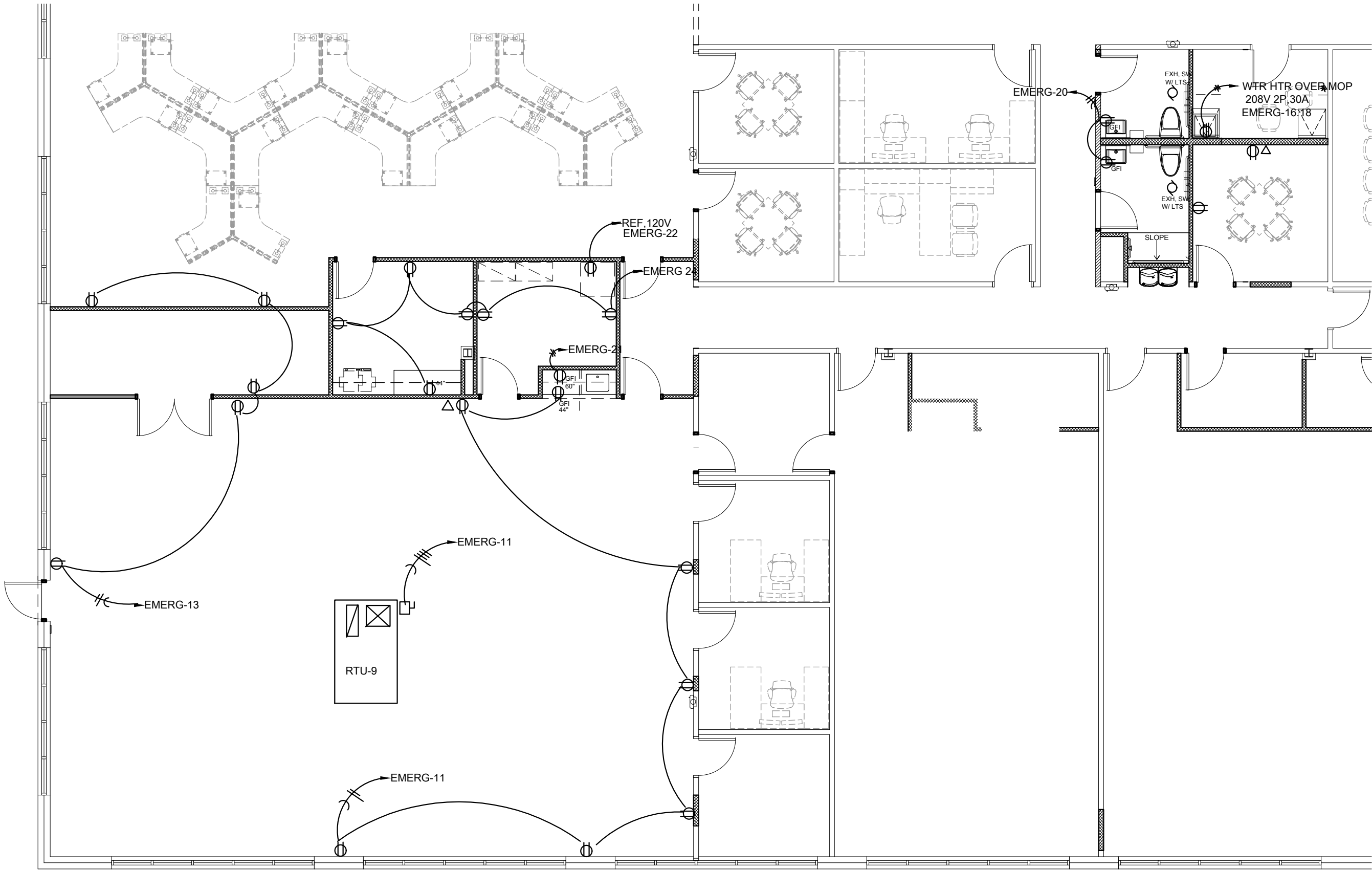
EMERG PANEL BOARD SCHEDULE																			
DESIGNATION		EMP	TYPE	SQ D NO				VOLTAGE				120/208, 3 Ø		AMPERAGE		100 MLO	MTG		SURFACE
CIRC NO	LOAD DESCRIPTION			BRK AMP	WIRE SIZE	LOAD (VA)	PHASE LOAD		LOAD (VA)	WIRE SIZE	BRK AMP	LOAD DESCRIPTION			CIRC NO				
1	FIRE ALARM PANEL			1-20	#12	768	1668	A	B	C	900	#12	1-20	DOOR ACCESS SYSTEM			2		
3	NEW MINI-SPLIT			2-20	#12	1500		3000		1500	#12	1-20	SERVER			4			
5						1500			2250	750	#12	PHONE PANEL			6				
7	EXIT LTS			1-20	#12	1200	4440				3240						8		
9	SECURITY PANEL			1-20	#12	500		3740		3240	#6	3-40		RTU-9			10		
11	RECPTS			1-20	#12	1260			4500	3240		-					12		
13	RECEPTS			1-20	#12	900	1620			720		1-20	GEN SET BATTERY CHARGER			14			
15	SPACE							2250		2250	#10	2-30		WATER HEATER			16		
17	SPACE								2250	2250							18		
19	SPARE			1-20	#12	500	1700			1200	#12	1-20	TOILET RECPTS			20			
21	RECEIPT			1-20	#12	900		1400		500	#12	1-20	REFRIG			22			
23	MICRO			1-20	#12	1000			2080	1080	#12	1-20	RECEPTS			24			
25	EXISTING LIGHTING			1-20	#12	1000	1000						SPACE			26			
27	EXISTING LIGHTING			1-20	#12	1000		1000					SPACE			28			
29	EXISTING LIGHTING			1-20	#12	1000			1000				SPACE			30			
31	EXISTING LIGHTING			1-20	#12	1000	1000						SPACE			32			
33	EXISTING LIGHTING			1-20	#12	1000		1000					SPACE			34			
35													SPACE			36			
37													SPACE			38			
39													SPACE			40			
41													SPACE			42			
				TOTALS:				11420	11390	12080									
MAX PHASE LOAD				MAX PHASE AMPS:				101					CALCULATED SERVICE LOAD						
12080(VA):													AMP:						
*SERVICE LOAD CALCULATION BASED ON NEC 220.82																			

RELOCATE EXISTING LIGHTING CIRCS FROM EXISTING PANEL B TO EMERG PANEL, COMBINE CIRCUITS ONTO BRKRS (EMERG-25-33). EQUALIZE WATTAGE AS CLOSE AS POSSIBLE, TOTAL WATTAGE SHOULD BE APPROX. 4500W.

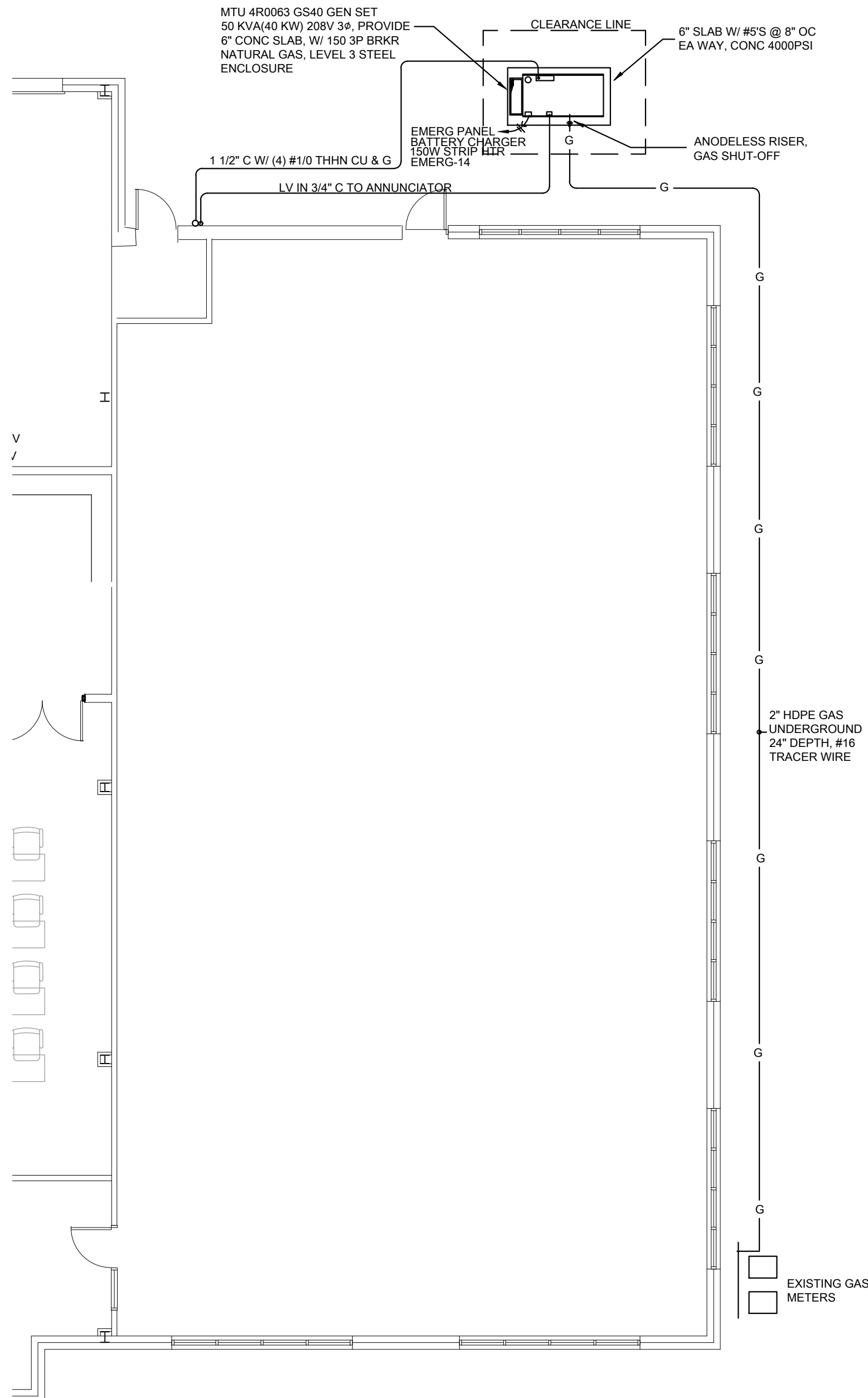
RELEASED FOR CONSTRUCTION
As Noted on Plans Review
Development Services Department
Lee's Summit, Missouri
07/09/2024



MECH ROOM REVISIONS 3
SCALE: 1/8"=1'-0" GS1-0



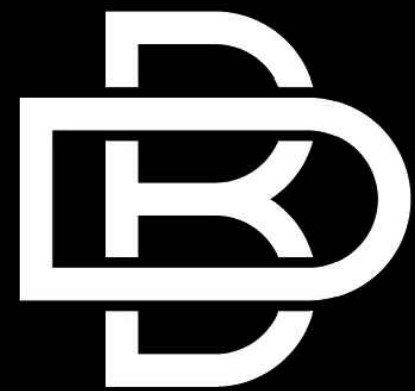
CIRCUIT REVISIONS TO EMERG PAN/ GEN SET 2
SCALE: 1/8"=1'-0" GS1-0



GEN SET -GAS CONNECTION PLAN 1
SCALE: 1/8"=1'-0" GS1-0

ELECTRICAL GENERAL NOTES:

- THESE NOTES APPLY TO ALL ELECTRICAL SHEET IN THE DRAWING SET.
- ALL ELECTRICAL WORK SHALL ADHERE STRICTLY TO THE 2018 NATIONAL ELECTRICAL CODE.
- COORDINATE FEED AND CONNECTION LOCATIONS FOR MECHANICAL EQUIPMENT WITH MECHANICAL CONTRACTOR.
- ELECTRICAL CONTRACTOR SHALL FURNISH ALL LABOR, MATERIAL AND EQUIPMENT NECESSARY TO COMPLETE ALL ELECTRICAL WORK AS SHOWN ON PLANS UNLESS NOTED OTHERWISE.
- CONTRACTOR SHALL COORDINATE POWER ENTRANCE A WITH LOCAL ELECTRIC UTILITY COMPANY.
- ALL ELECTRICAL WORK SHALL BE DONE IN ACCORDANCE WITH ALL LOCAL CODES HAVE JURISDICTION OVER THIS WORK HEREIN. WORK IS SUBJECT TO INSPECTION BY AGENCIES HAVING JURISDICTION.
- DISCREPANCIES BETWEEN PLANS AND LOCAL CODES SHALL BE BROUGHT TO THE ATTENTION OF THE ARCHITECT/ENGINEER DURING BIDDING AND PRIOR TO INSTALLATION.
- ALL CUTTING AND PATCHING REQUIRED FOR THE INTRODUCTION AND PLACEMENT OF ELECTRICAL WORK SHALL BE DONE PER SPECIFICATIONS.
- ALL MATERIALS SHALL BE NEW AND OF QUALITY SPECIFIED. ALL WORK SHALL BE EXECUTED IN A NEAT AND ORDERLY MANNER.
- THE PLANS SHOW THE WORK CONTEMPLATED BUT THE ELECTRICAL CONTRACTOR SHALL BE SOLELY RESPONSIBLE FOR TAKING HIS OWN MEASUREMENTS AND INSTALLING HIS WORK TO FIT CONDITIONS ENCOUNTERED.
- ELECTRICAL CONTRACTOR SHALL REPORT ANY DISCREPANCIES OR INTERFERENCES TO ARCHITECT/ENGINEER THAT MAY BE DISCOVERED DURING BIDDING AND PRIOR TO INSTALLATION FOR PROPER APPROVAL OF DEVIATING FROM ORIGINAL DESIGN LAYOUT.
- METAL-CLAD, TYPE MC, MAY BE USED FOR BRANCH CIRCUITS ONLY IN DRY LOCATIONS WHERE NOT SUBJECT TO PHYSICAL DAMAGE (I.E. LOCATED IN WALLS) PER THE FOLLOWING REQUIREMENTS:
 - CABLES CONTAIN THHN INSULATED COPPER CONDUCTORS INCLUDING FULL RATED, INSULATED COPPER GROUND CONDUCTOR.
 - CABLE SHALL BEAR UL LABEL AND MANUFACTURERS "E" NUMBER.
 - CABLE SHALL UTILIZE ALUMINUM OR GALVANIZED STEEL INTERLOCKED ARMOR COVER.
 - RATED FOR TWO HOUR FIRE RATING PER UL FIRE WALL PENETRATION TEST, UL 1479.
 - ANTI-SHORT BUSHING SHALL BE INSTALLED IN EACH CABLE TERMINATION.
 - SHALL NOT BE INSTALLED AS "HOME RUN". SEE SPECIFICATION SECTION 260533, PARAGRAPH 3.02, B. FOR BRANCH CIRCUIT HOME RUN DEFINITION.
 - SHALL TERMINATE WITH STEEL LOCKNUT STYLE CABLE CONNECTORS UL LISTED FOR USE WITH MC CABLE.



BUXTON KUBIK DODD
DESIGN COLLECTIVE

3100 S. NATIONAL AVENUE, SUITE 300
SPRINGFIELD, MO 65807
PHONE: 417.890.5543 FAX: 417.890.5563
MISSOURI CERTIFICATE OF AUTHORITY NO. A-200607284

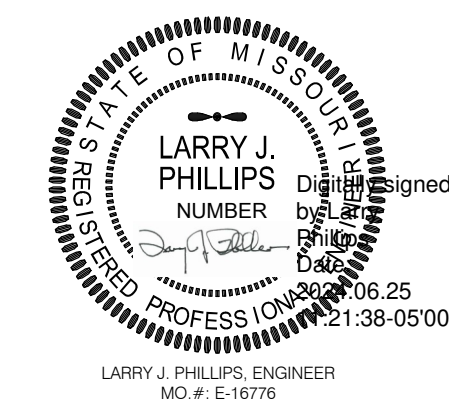
PROJECT:
NEW GENERATOR
INSTALLATION FOR:



SUPPORTING INDIVIDUALS WITH
DISABILITIES FOR OVER 40 YEARS
LOCATION:
500 NE COLBERN ROAD
LEE'S SUMMIT, MISSOURI 64088

MODIFICATIONS:

CONSTRUCTION DOCUMENTS



THIS SEAL IS FOR ENGINEERING INFORMATION
Project No. Drawn Date CAD File No.
BKD-2879.1LP 06.24.2024

GS1-0

GEN SET
EMERG POWER