

Need colors from customer

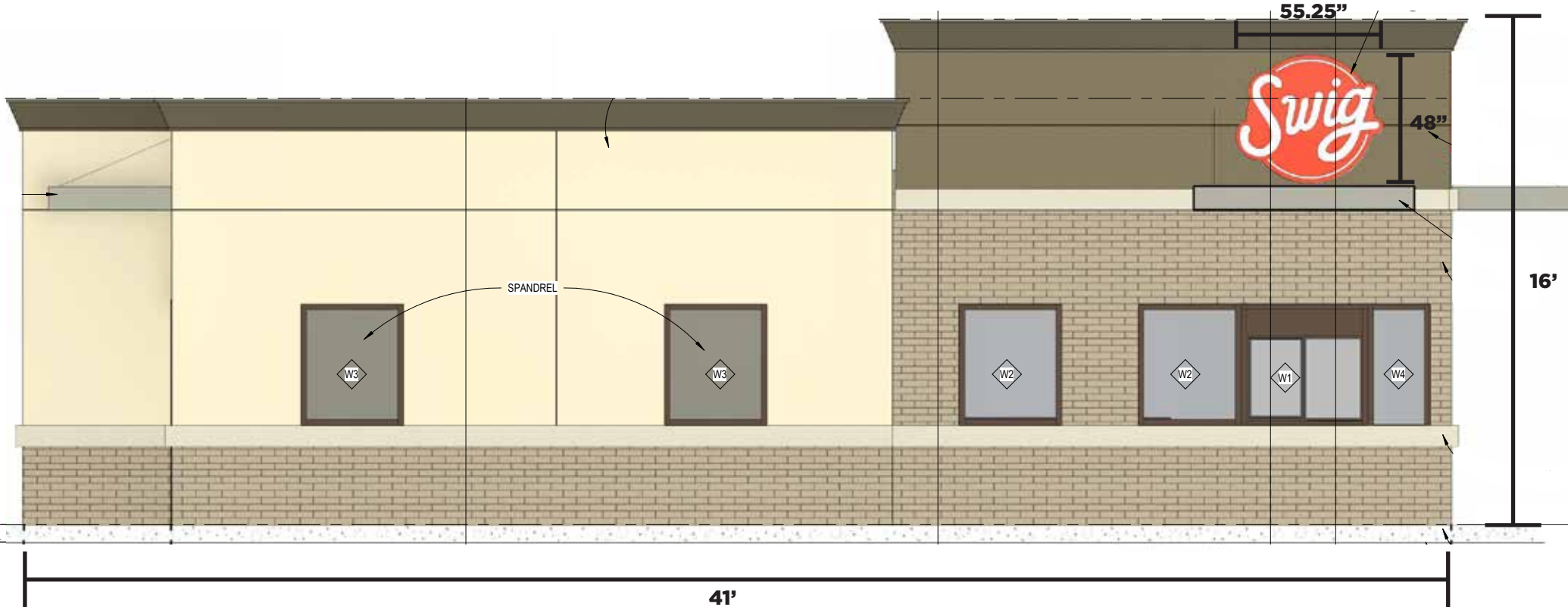


Customer: **Swig**  
 Address: **400 NW Chipman Rd.**  
 City/St./Zip: **Lee's Summit, MO 64066**  
 Phone: **801-336-8606**  
 Email: **j.assmus@swigdrinks.com**



Sign Dimensions: <b>55.25" x 48" = 18.4sf</b>	PMS Colors: <b>Customer Provided Colors</b>
Store Front Sq. Footage: <b>41' x 16' = 656sf</b>	Trim Cap: <b>Black</b>
Contact:	Returns: <b>Black</b>
Sales Person: Barry	Raceway: <b>Direct Mount</b>
Designer: Cody	Proofs: <b>___ of 3</b>

Customer signature on this proof authorizes Victory Sign Company to proceed with the construction of your product exactly as specified on the proof. We recommend showing your proof to another individual for review, as corrections must be made prior to submitting your final signature. Your product will be replicated from the approved proof, regardless of spelling, grammar or design errors, whether incurred by the customer or Victory Sign Company. Once produced, any further updates or revisions to your product will incur additional charges up to 100% of the original order amount at the discretion of Victory Sign Company. This is standard policy for all sign companies and printers. This design concept is submitted only for your approval or review and is the exclusive property of Victory Sign Company. This concept may not be copied, reproduced, exhibited or utilized for any purpose, in part or in whole by any individual without written consent of Victory Sign Company. Our renderings are in attempt to illustrate an accurate representation of the final product. Victory Sign Company cannot be held responsible for differences between renderings and the finished product caused by monitors, printers, or environmental lighting. Victory Sign Company allows three free revisions on initial proof design any revisions beyond that are billed at \$100 hr. Thank you.



Need colors from customer

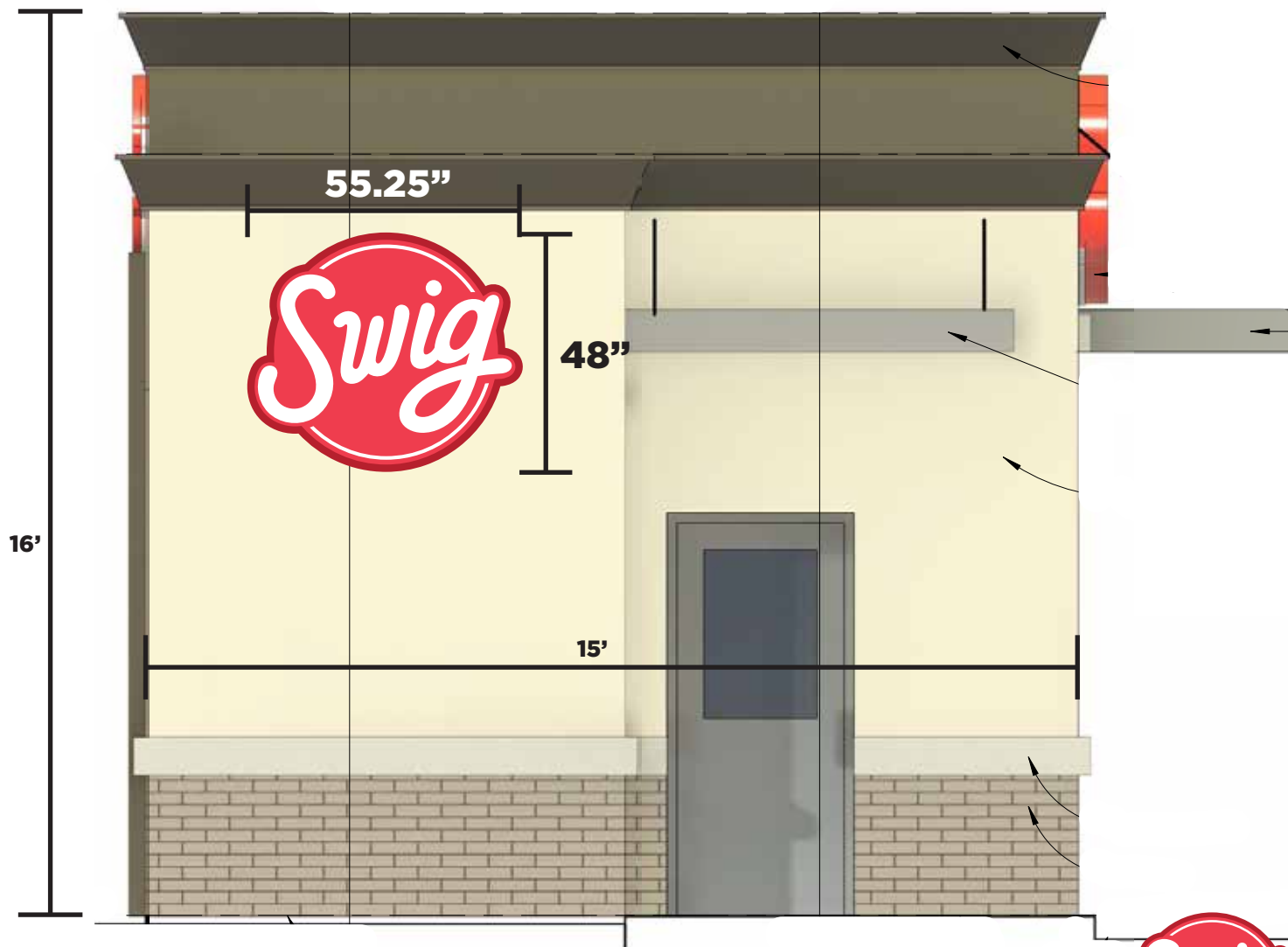


Customer: **Swig**  
 Address: **400 NW Chipman Rd.**  
 City/St./Zip: **Lee's Summit, MO 64066**  
 Phone: **801-336-8606**  
 Email: **j.assmus@swigdrinks.com**



Sign Dimensions: <b>55.25" x 48" = 18.4sf</b>	PMS Colors: <b>Customer Provided Colors</b>
Store Front Sq. Footage: <b>41' x 16' = 656sf</b>	Trim Cap: <b>Black</b>
Contact:	Returns: <b>Black</b>
Sales Person: Barry	Raceway: <b>Direct Mount</b>
Designer: Cody	Proofs: ____ of 3

Customer signature on this proof authorizes Victory Sign Company to proceed with the construction of your product exactly as specified on the proof. We recommend showing your proof to another individual for review, as corrections must be made prior to submitting your final signature. Your product will be replicated from the approved proof, regardless of spelling, grammar or design errors, whether incurred by the customer or Victory Sign Company. Once produced, any further updates or revisions to your product will incur additional charges up to 100% of the original order amount at the discretion of Victory Sign Company. This is standard policy for all sign companies and printers. This design concept is submitted only for your approval or review and is the exclusive property of Victory Sign Company. This concept may not be copied, reproduced, exhibited or utilized for any purpose, in part or in whole by any individual without written consent of Victory Sign Company. Our renderings are in attempt to illustrate an accurate representation of the final product. Victory Sign Company cannot be held responsible for differences between renderings and the finished product caused by monitors, printers, or environmental lighting. Victory Sign Company allows three free revisions on initial proof design any revisions beyond that are billed at \$100 hr. Thank you.



Need colors from customer



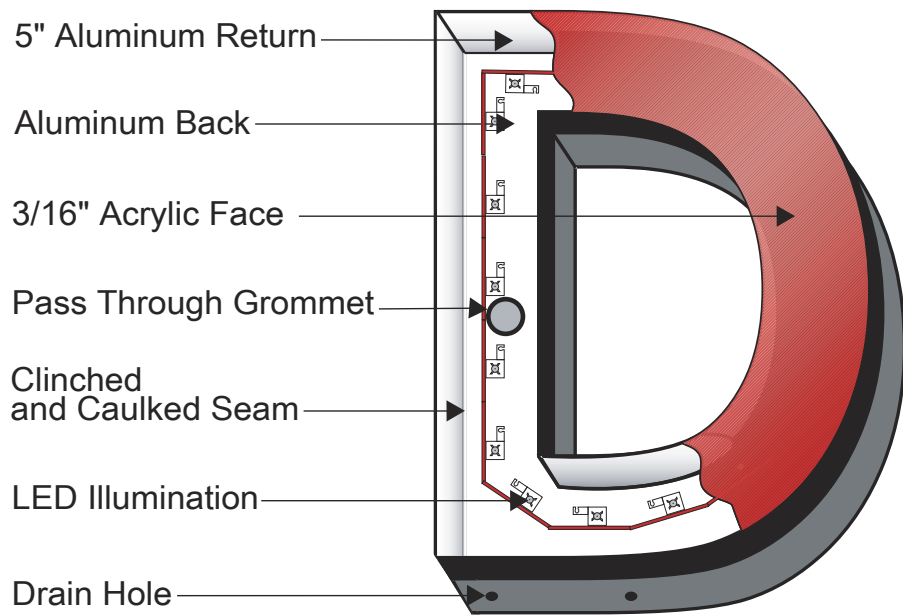
Customer: **Swig**  
 Address: **400 NW Chipman Rd.**  
 City/St./Zip: **Lee's Summit, MO 64066**  
 Phone: **801-336-8606**  
 Email: **j.assmus@swigdrinks.com**



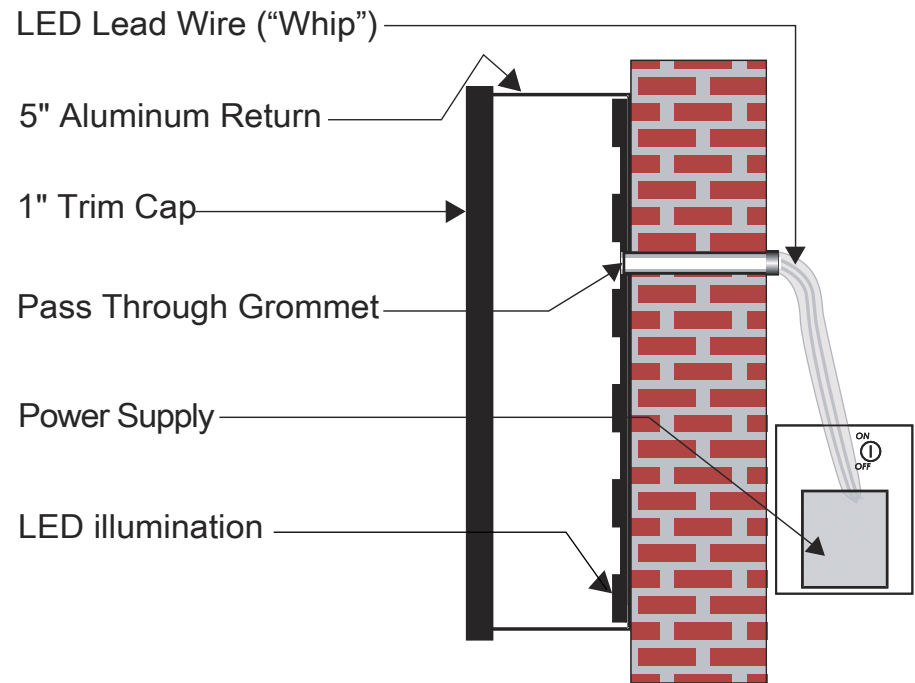
1021 S. Brown St. | Liberty, MO 64068  
**816-407-SIGN (7446)**  
[www.victorysignco.com](http://www.victorysignco.com)

Sign Dimensions: <b>55.25" x 48" = 18.4sf</b>	PMS Colors: <b>Customer Provided Colors</b>
Store Front Sq. Footage: <b>15' x 16' = 240sf</b>	Trim Cap: <b>Black</b>
Contact:	Returns: <b>Black</b>
Sales Person: Barry	Raceway: <b>Direct Mount</b>
Designer: Cody	Proofs: ____ of 3

Customer signature on this proof authorizes Victory Sign Company to proceed with the construction of your product exactly as specified on the proof. We recommend showing your proof to another individual for review, as corrections must be made prior to submitting your final signature. Your product will be replicated from the approved proof, regardless of spelling, grammar or design errors, whether incurred by the customer or Victory Sign Company. Once produced, any further updates or revisions to your product will incur additional charges up to 100% of the original order amount at the discretion of Victory Sign Company. This is standard policy for all sign companies and printers. This design concept is submitted only for your approval or review and is the exclusive property of Victory Sign Company. This concept may not be copied, reproduced, exhibited or utilized for any purpose, in part or in whole by any individual without written consent of Victory Sign Company. Our renderings are in attempt to illustrate an accurate representation of the final product. Victory Sign Company cannot be held responsible for differences between renderings and the finished product caused by monitors, printers, or environmental lighting. Victory Sign Company allows three free revisions on initial proof design any revisions beyond that are billed at \$100 hr. Thank you.



**FRONT VIEW**



**SIDE VIEW FLUSH MOUNT**

Need colors from customer



Customer: **Swig**

Address: **400 NW Chipman Rd.**

City/St./Zip: **Lee's Summit, MO 64066**

Phone: **801-336-8606**

Email: **j.assmus@swigdrinks.com**

**VICTORY SIGN**  
COMPANY

1021 S. Brown St. | Liberty, MO 64068

**816-407-SIGN (7446)**

www.victorysignco.com

Sign Dimensions: **55.25" x 48" = 18.4sf**

Store Front Sq. Footage:

Contact:

Sales Person: Barry

Designer: Cody

PMS Colors: **Customer Provided Colors**

Trim Cap: **Black**

Returns: **Black**

Raceway: **Direct Mount**

Proofs: \_\_\_\_ of 3

Customer signature on this proof authorizes Victory Sign Company to proceed with the construction of your product exactly as specified on the proof. We recommend showing your proof to another individual for review, as corrections must be made prior to submitting your final signature. Your product will be replicated from the approved proof, regardless of spelling, grammar or design errors, whether incurred by the customer or Victory Sign Company. Once produced, any further updates or revisions to your product will incur additional charges up to 100% of the original order amount at the discretion of Victory Sign Company. This is standard policy for all sign companies and printers. This design concept is submitted only for your approval or review and is the exclusive property of Victory Sign Company. This concept may not be copied, reproduced, exhibited or utilized for any purpose, in part or in whole by any individual without written consent of Victory Sign Company. Our renderings are in attempt to illustrate an accurate representation of the final product. Victory Sign Company cannot be held responsible for differences between renderings and the finished product caused by monitors, printers, or environmental lighting. Victory Sign Company allows three free revisions on initial proof design any revisions beyond that are billed at \$100 hr. Thank you.