

Autodesk Docs\15-22125-00 MCC Automotive Institute\15-22125-00_MCC Automotive Center_MEP_2022.rvt
5/31/2024 10:20:14 AM

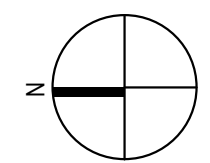
1

2

3

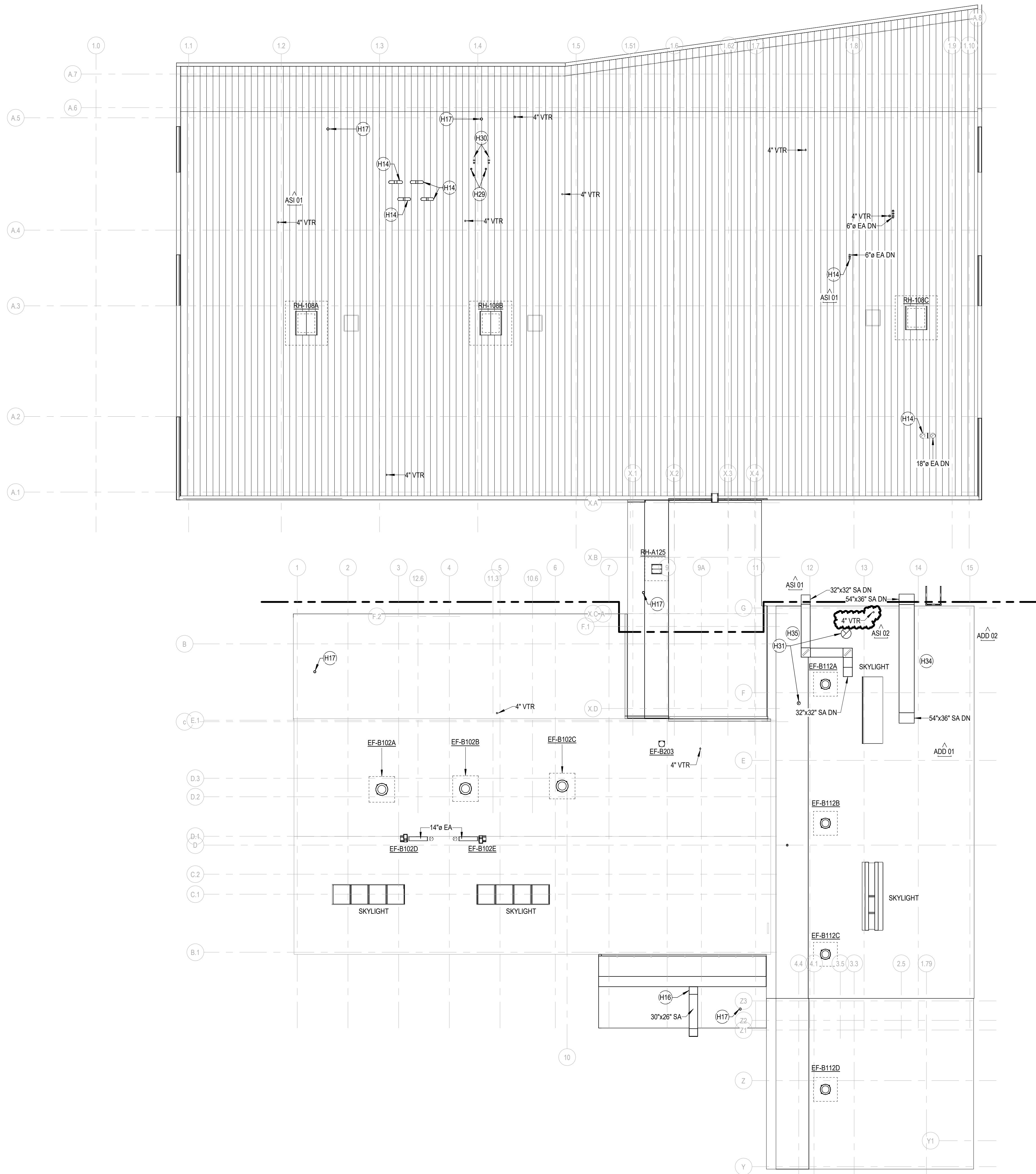
4

5



ROOF - OVERALL - HVAC PLAN

SCALE: 1/16" = 1'-0"



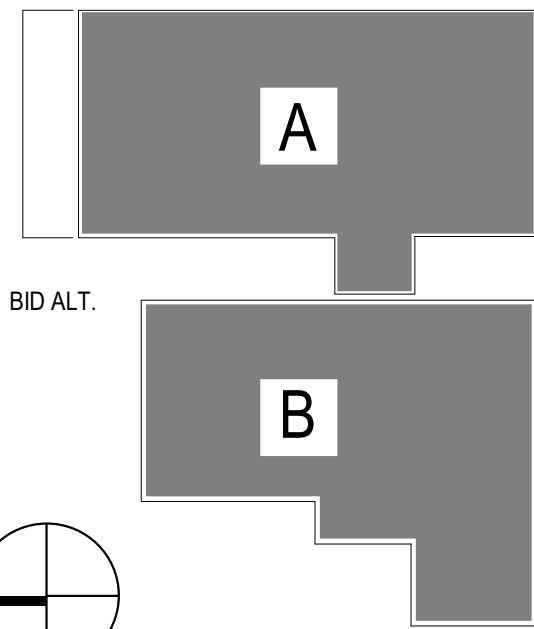
SHEET NOTES

- H14 PROVIDE ALUMINUM BIRDSCREEN ON TERMINATION OF GOOSENECK
- H16 28"x28" SUPPLY AIR DUCT DOWN TO WELDING ROOM. REFER TO M1.1B FOR CONTINUATION.
- H17 GAS-FIRED UNIT HEATER MANUFACTURER'S CONCENTRIC VENT. CONCENTRIC VENT KIT TO INCLUDE CONCENTRIC ADAPTER BOX, COMBUSTION AIR INLET ASSEMBLY, AND EXHAUST VENT TERMINAL ASSEMBLY.
- H29 4" BOLLER VENT. PROVIDE WITH RAIN CAP. INSTALL PER MANUFACTURER'S INSTRUCTIONS.
- H30 4" BOLLER COMBUSTION AIR INTAKE. TERMINATE WITH GOOSENECK. INSTALL ALUMINUM BIRD SCREEN. INSTALL PER MANUFACTURER'S INSTRUCTIONS.
- H31 ROOF OPENINGS FOR 12"Ø EA AND 36"Ø EA FOR MIXING ROOM. PAINT BOOTH. AND PREP BOOTH RELOCATION. COORDINATE WITH PAINT SPRAY BOOTH CONTRACTOR.
- H34 PREP BOOTH MAKEUP AIR UNIT TO BE RELOCATED BY OTHERS. PROVIDE PAD TO SUPPORT INSTALLATION OF MAKEUP AIR UNIT. 54"x36" SA TO BE PROVIDED BY OTHERS EXTERIOR TO BUILDING AND ON ROOF. PROVIDE ROOF PENETRATION OPENING FOR CONNECTION TO PAINT SPRAY BOOTH. COORDINATE WITH PAINT SPRAY BOOTH CONTRACTOR.
- H35 PAINT SPRAY BOOTH MAKEUP AIR UNIT TO BE RELOCATED BY OTHERS. PROVIDE PAD AND STRUCTURAL SUPPORTS TO ALLOW BOTTOM-DISCHARGE UNIT TO BE ELEVATED. 32"x32" SA TO BE PROVIDED BY OTHERS EXTERIOR TO BUILDING AND ON ROOF. PROVIDE ROOF PENETRATION OPENING FOR CONNECTION TO PAINT SPRAY BOOTH. COORDINATE WITH PAINT SPRAY BOOTH CONTRACTOR.

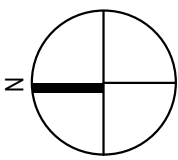
ADD 01
ADD 02

ASI 01

KEY PLAN



BID ALT.



RELEASED FOR CONSTRUCTION
As Noted on Plans Review

DLR GROUP
© DLR Group
7230 West 133rd Street
Overland Park, KS 66213
CA No. 000599



ARCHITECT
DLR GROUP
7230 W 133RD ST.
OVERLAND PARK, KS 66213
P: (913) 897-7811 F: (402) 330-2749

STRUCTURAL ENGINEER
DLR GROUP
7230 W 133RD ST.
OVERLAND PARK, KS 66213
P: (913) 897-7811 F: (402) 330-2749

MEP ENGINEERS
DLR GROUP
7230 W 133RD ST.
OVERLAND PARK, KS 66213
P: (913) 897-7811 F: (402) 330-2749

CIVIL ENGINEER
TALIAFERRO & BROWNE, INC
1020 E. 8TH ST.
KANSAS CITY, MO 64118
P: (816) 283-3456

AV/TELECOM/ACOUSTICS/SECURITY DESIGNER
BRANCHPATTERN
1508 GRAND BOULEVARD
KANSAS CITY, MO 64108
P: (816) 283-3456

**MCC AUTOMOTIVE INSTITUTE
ADDITION AND REMODELS**
METROPOLITAN COMMUNITY COLLEGE - LONGVIEW
500 SW LONGVIEW RD.
LEES SUMMIT, MO 64081

100%
CONSTRUCTION
DOCUMENTS
04.26.24
REVISIONS
ADD 01 02/16/24 Addendum
ADD 02 02/23/24 Addendum
ASI 01 04/23/24 ASI
ASI 02 05/31/24 ASI

13-23128-00
ROOF - OVERALL -
HVAC PLAN

M1.3



ARCHITECT
DLR GROUP
7290 W 133RD ST,
OVERLAND PARK, KS 66213
P: (913) 897-7811 F: (402) 330-274

STRUCTURAL ENGINEER
DLR GROUP
7290 W 133RD ST,
OVERLAND PARK, KS 66213
P: (913) 897-7811 F: (402) 330-2749

MEP ENGINEERS
DLR GROUP
7290 W 133RD ST,
OVERLAND PARK, KS 66213
P: (913) 897-7811 F: (402) 330-274

CIVIL ENGINEER
TALIAFERRO & BROWNE, INC
1020 E. 8TH ST.
KANSAS CITY, MO 64118
P: (816) 283-3456

**AV/TELECOM/ ACOUSTICS/
SECURITY DESIGNER**
BRANCHPATTERN
1508 GRAND BOULEVARD
KANSAS CITY, MO 64108
P: (816) 283-3456

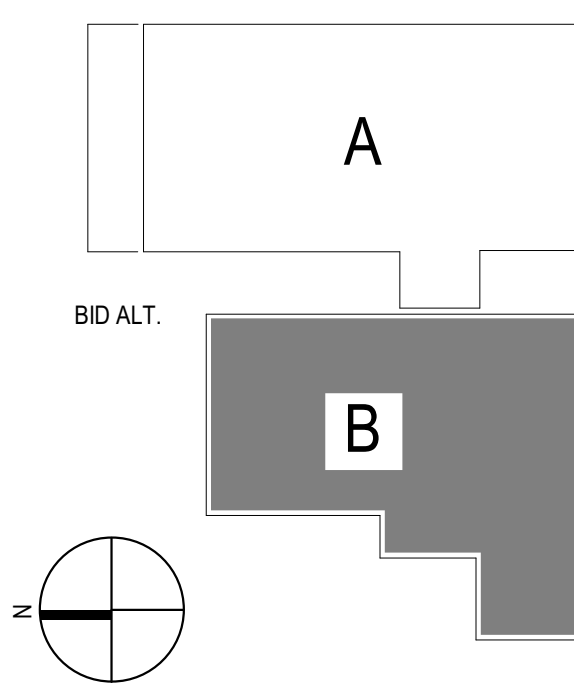
DEMOLITION GENERAL NOTES

- A. VERIFY ALL EXISTING CONDITIONS PRIOR TO COMMENCING WORK. DEVIATIONS FROM THE DRAWINGS SHOULD BE DIRECTED TO THE ARCHITECT/ENGINEER FOR RESOLUTION.
- B. REMOVE ALL FIXTURES, EQUIPMENT, MATERIAL, ETC. SHOWN FULL TONE INCLUDING SUPPORTS, ACCESSORIES, AND ALL OTHER RELATED ITEMS. REMOVE ALL PIPING SHOWN FULL TONE BACK TO CONNECTION TO POINT INDICATED AND CAP UNLESS OTHERWISE NOTED. PATCH, REPAIR, AND PAINT EXISTING CONSTRUCTION AND REPAIR ANY OPENINGS LEFT IN EXISTING CONSTRUCTION TO MATCH EXISTING CONDITIONS AFTER COMPLETION OF DEMOLITION WORK.

SHEET NOTES

- D01 REMOVE EXISTING GAS PIPING SERVING RADIANT HEATERS BACK TO MAIN AND CAP. REMOVE ALL ASSOCIATED ACCESSORIES.
- D02 REMOVE EXISTING GAS PIPING SERVING PANTON MAKE-UP AIR UNITS BACK TO MAIN AND CAP. REMOVE ALL ASSOCIATED ACCESSORIES.
- D03 REMOVE EXISTING AIR COMPRESSOR LOCATED IN SHELL AND ALL ASSOCIATED ACCESSORIES. DISCONNECT PIPING. PREPARE FOR NEW AIR COMPRESSOR IN THE SAME LOCATION AS PART OF NEW WORK.
- D04 REMOVE EXISTING HOSE REEL AND ALL ASSOCIATED ACCESSORIES AND PIPING.
- D05 REMOVE ALL COMPRESSED AIR PIPING ASSOCIATED WITH AIR COMPRESSOR. ALL NEW PIPING TO BE INSTALLED AS PART OF NEW WORK.
- D06 REMOVE EXISTING SINK AND ALL ASSOCIATED ACCESSORIES. REMOVE DOMESTIC PIPING BACK TO MAIN AND CAP. REMOVE VENT BACK TO MAIN AND CAP. CAP SANITARY AT GRADE AND PREPARE FOR NEW FLOOR CLEAN OUT AS PART OF NEW WORK.
- D07 REMOVE EXISTING EYE WASH AND ALL ASSOCIATED ACCESSORIES. REMOVE DOMESTIC WATER BACK TO MAIN AND CAP. REMOVE VENT PIPING BACK TO MAIN AND CAP. CAP SANITARY PIPING TO BELOW GRADE AND CAP COORDINATE PATCHING AND REPAIRING FLOOR IN THIS LOCATION AS REQUIRED.
- D08 REMOVE EXISTING FOUNTAIN AND ALL ASSOCIATED ACCESSORIES. REMOVE DOMESTIC PIPING BACK TO MAIN AND CAP. REMOVE VENT PIPING BACK TO MAIN AND CAP. REMOVE VENT TO BELOW GRADE AND CAP. COORDINATE PATCHING AND REPAIRING FLOOR IN THIS LOCATION AS REQUIRED.
- D09 REMOVE EXISTING SINK AND ALL ASSOCIATED ACCESSORIES. REMOVE DOMESTIC PIPING BACK TO MAIN AND CAP. REMOVE VENT PIPING BACK TO MAIN AND CAP. REMOVE VENT TO BELOW GRADE AND CAP. PREPARE FOR NEW FLOOR CLEAN OUT AS PART OF NEW WORK.
- D10 REMOVE EXISTING HWC PIPING AS SHOWN. CAP AND PREPARE FOR NEW PIPING AS PART OF NEW WORK.
- D11 REMOVE ALL EXISTING PLUMBING FIXTURES WITHIN RESTROOM AND ALL ASSOCIATED ACCESSORIES. REMOVE DOMESTIC PIPING BACK TO MAIN AND CAP. REMOVE VENT PIPING BACK TO MAIN AND CAP. REMOVE SANITARY PIPING TO FLOOR PENETRATION AND PREPARE FOR NEW CLEAN OUT AS PART OF NEW WORK.
- D12 REMOVE INDICATED SECTION OF EXISTING SANITARY MAIN. SEE P. 1B FOR REQUIRED SANITARY. COORDINATE PATCHING AND REPAIRING FLOOR IN THIS LOCATION AS REQUIRED.
- D13 REMOVE AND UPGRADE GAS METER AND PIPING AS REQUIRED TO ALLOW GAS.
- D14 REMOVE EXISTING PLUMBING FIXTURES WITHIN RESTROOM AND ALL ASSOCIATED ACCESSORIES. REMOVE DOMESTIC PIPING BACK TO MAIN AND CAP. REMOVE VENT PIPING BACK TO MAIN AND CAP. REMOVE SANITARY PIPING TO FLOOR PENETRATION AND PREPARE FOR NEW CLEAN OUT AS PART OF NEW WORK.
- D15 REMOVE AND DISCONNECT EXISTING 6" OIL WASTE PIPING AT LOCATION INDICATED. CAP AND ABANDON EXISTING 6" OIL WASTE PIPING. DISCONNECT PREPARE EXISTING 6" OIL WASTE PIPING TO REMAIN FOR CONNECTION TO NEW OIL WASTE PIPER IN PART OF NEW WORK. REFER TO NEW WORK PIPER PLAN P.1B.

KEY PLAN



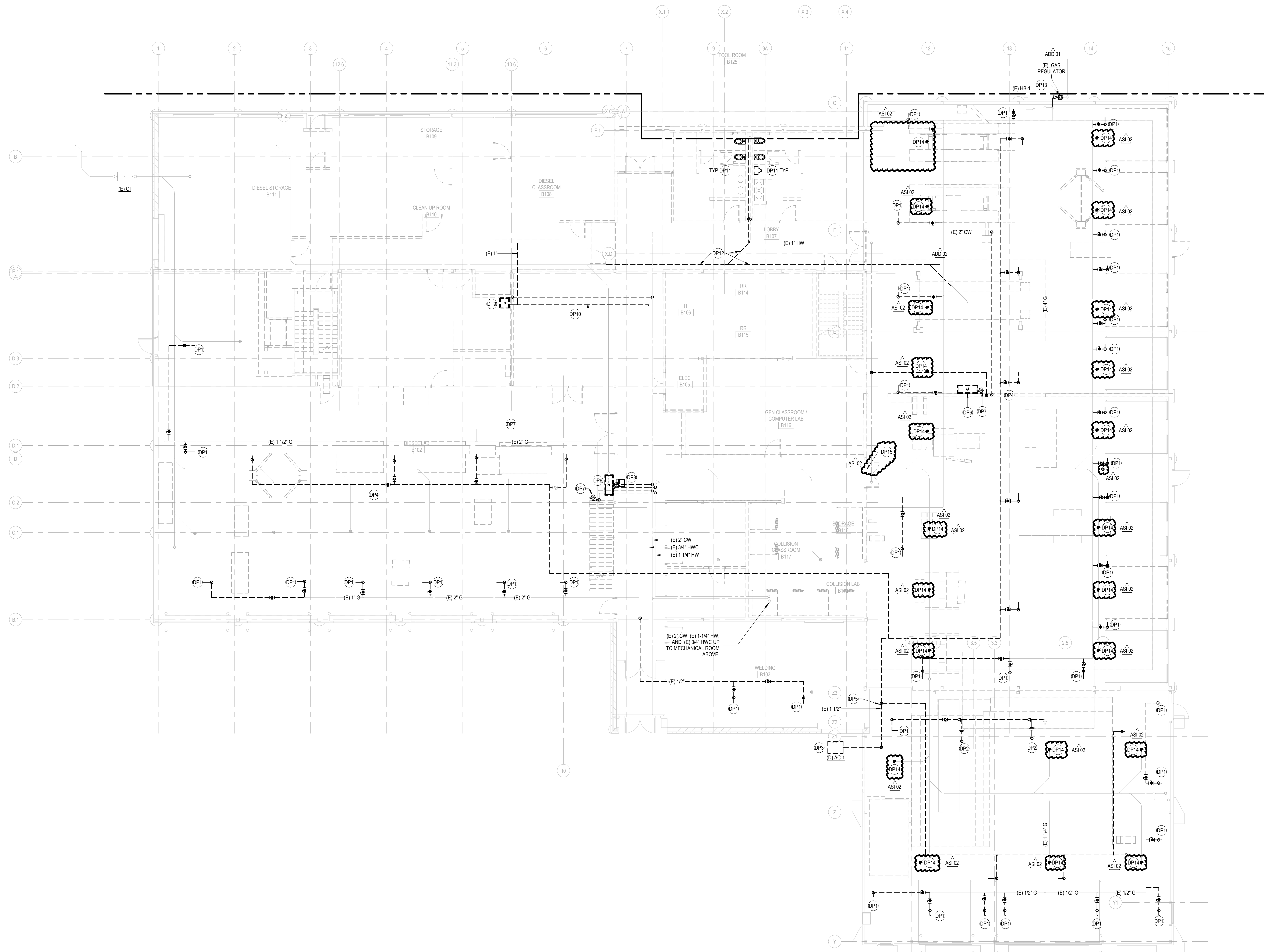
100%
CONSTRUCTION
DOCUMENTS

| | | |
|-----------|----------|---------|
| 04.26.24 | | |
| REVISIONS | | |
| ADD 01 | 02/16/24 | Addend. |
| ADD 02 | 02/23/24 | Addend. |
| ASI 02 | 05/31/24 | ASI |

13-23128-00

LEVEL 01 - AREA
B - DEMOLITION
PLAN

PD2.1B



LEVEL 01 - DEMOLITION PLAN - AREA B

SCALE: 1/8" = 1'-0"

Autodesk Docu/13-23128-00 MCC Automotive Institute/13-23128-00_MCC Automotive Center_MEP_2022.rvt
5/31/2024 10:20:32 AM

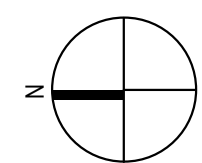
1

2

3

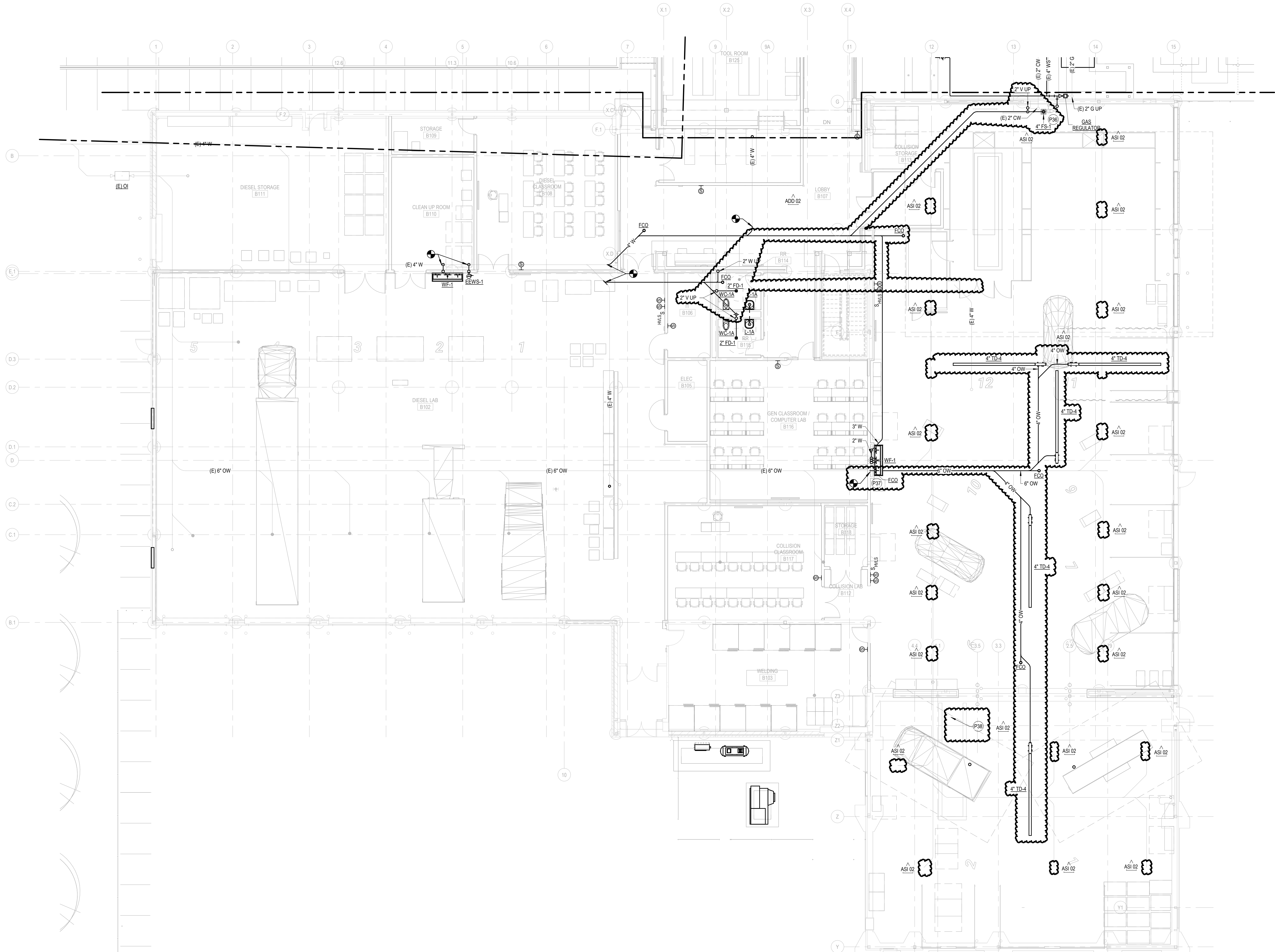
4

5



LEVEL 0 - AREA B - UNDERGROUND PLUMBING PLAN

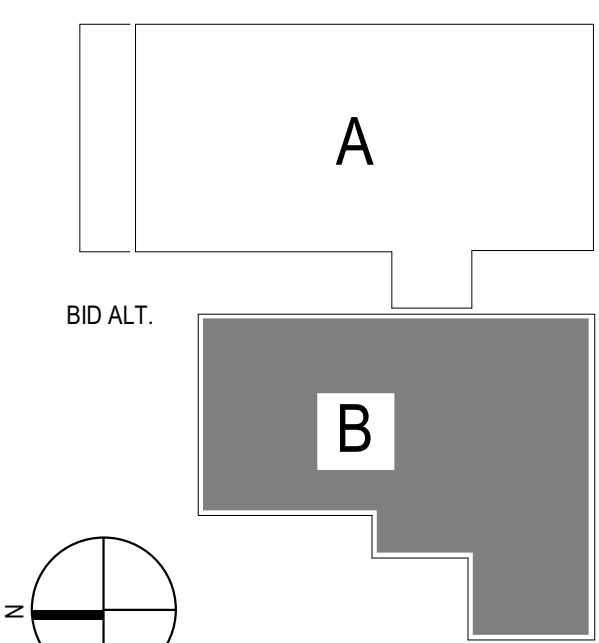
SCALE: 1/8" = 1'-0"



SHEET NOTES

- P36 PROVIDE FLOOR SINK TO SERVE RPZ BACKFLOW PREVENTER. RAISE FLOOR SINK 1\"/>

KEY PLAN



ARCHITECT
DLR GROUP
7230 W 133RD ST.
OVERLAND PARK, KS 66213
P: (913) 897-7811 F: (402) 330-2749

STRUCTURAL ENGINEER
DLR GROUP
7230 W 133RD ST.
OVERLAND PARK, KS 66213
P: (913) 897-7811 F: (402) 330-2749

MEP ENGINEERS
DLR GROUP
7230 W 133RD ST.
OVERLAND PARK, KS 66213
P: (913) 897-7811 F: (402) 330-2749

CIVIL ENGINEER
TALIAFERRO & BROWNE, INC
1020 E. 8TH ST.
KANSAS CITY, MO 64118
P: (816) 283-3456

AVTELECOM/ACOUSTICS/SECURITY DESIGNER
BRANCHPATTERN
1508 GRAND BOULEVARD
KANSAS CITY, MO 64108
P: (816) 283-3456

**MCC AUTOMOTIVE INSTITUTE
ADDITION AND REMODELS**
METROPOLITAN COMMUNITY COLLEGE - LONGVIEW
500 SW LONGVIEW RD.
LEES SUMMIT, MO 64081

100%
CONSTRUCTION
DOCUMENTS

04.26.24

REVISIONS

ADD 02 02/23/24 Addendum

ASI 02 05/31/24 ASI

13-23128-00

LEVEL 0 - AREA B
- UNDERGROUND
PLUMBING PLAN

P1.1B

Autodesk Docu/13-2125-00 MCC Automotive Institute/13-2125-00_MCC Automotive Center_MEI_2022.vit
5/1/2024 10:29:32 AM

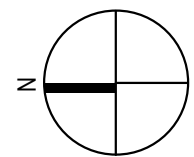
1

2

3

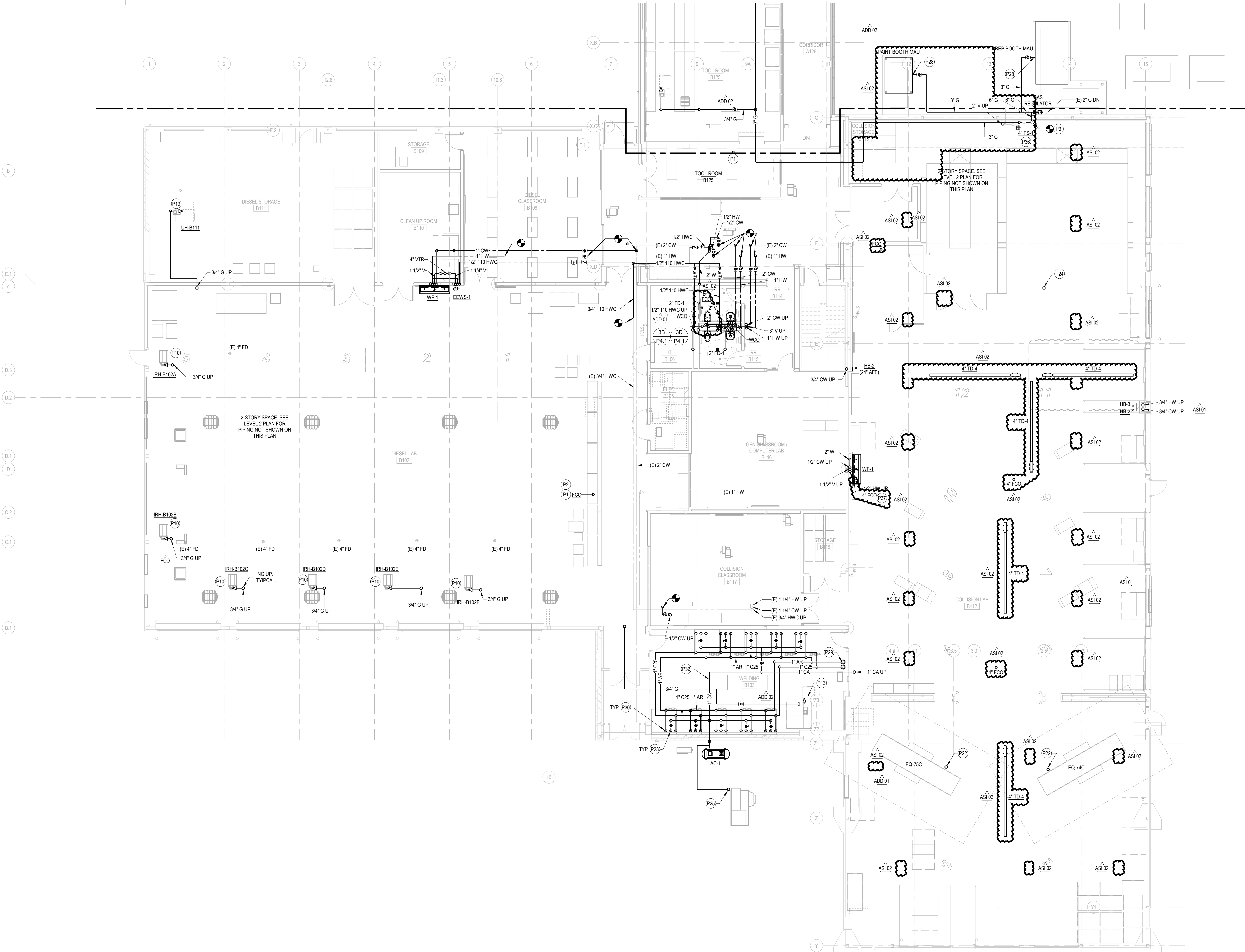
4

5



LEVEL 01 - AREA B - PLUMBING PLAN

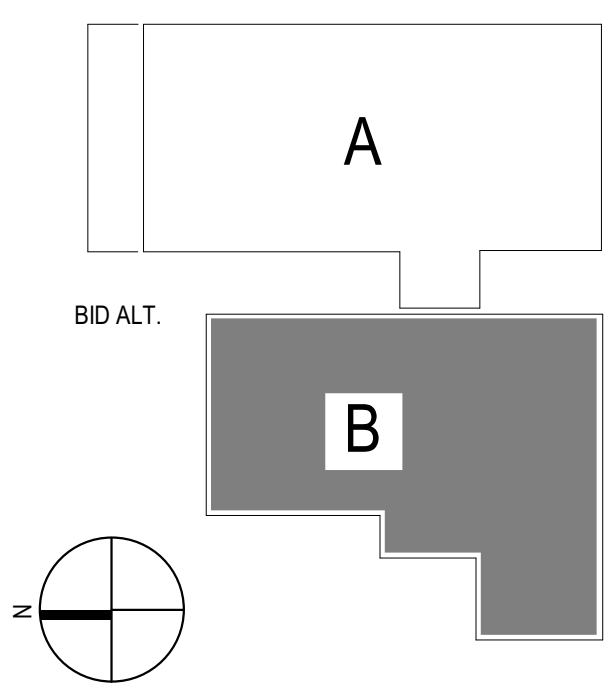
SCALE: 1/8" = 1'-0"



SHEET NOTES

- P1 INSTALL NEW FCO AT CAPPED PIPE FROM DEMO PHASE.
P2 FLOOR CLEANOUT TO BE RATED FOR HEAVY TRAFFIC.
P3 RECONNECT EXISTING GAS PIPE TO NEW 6\"/>

KEY PLAN



ARCHITECT
DLR GROUP
7230 W 133RD ST.
OVERLAND PARK, KS 66213
P: (913) 897-7811 F: (402) 330-2749

STRUCTURAL ENGINEER
DLR GROUP
7230 W 133RD ST.
OVERLAND PARK, KS 66213
P: (913) 897-7811 F: (402) 330-2749

MEP ENGINEERS
DLR GROUP
7230 W 133RD ST.
OVERLAND PARK, KS 66213
P: (913) 897-7811 F: (402) 330-2749

CIVIL ENGINEER
TALIAFERRO & BROWNE, INC
1020 E. 8TH ST.
KANSAS CITY, MO 64118
P: (816) 283-3456

AVTELECOM/ACOUSTICS/SECURITY DESIGNER
BRANCHPATTERN
1508 GRAND BOULEVARD
KANSAS CITY, MO 64108
P: (816) 283-3456

**MCC AUTOMOTIVE INSTITUTE
ADDITION AND REMODELS**
METROPOLITAN COMMUNITY COLLEGE - LONGVIEW
500 SW LONGVIEW RD.
LEES SUMMIT, MO 64081

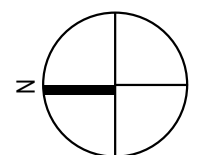
100%
CONSTRUCTION
DOCUMENTS
04.26.24
REVISIONS

| | | |
|--------|----------|----------|
| ADD 01 | 02/16/24 | Addendum |
| ADD 02 | 02/28/24 | Addendum |
| ASI 01 | 04/26/24 | ASI |
| ASI 02 | 05/31/24 | ASI |

13-23128-00
LEVEL 01 - AREA
B - PLUMBING
PLAN

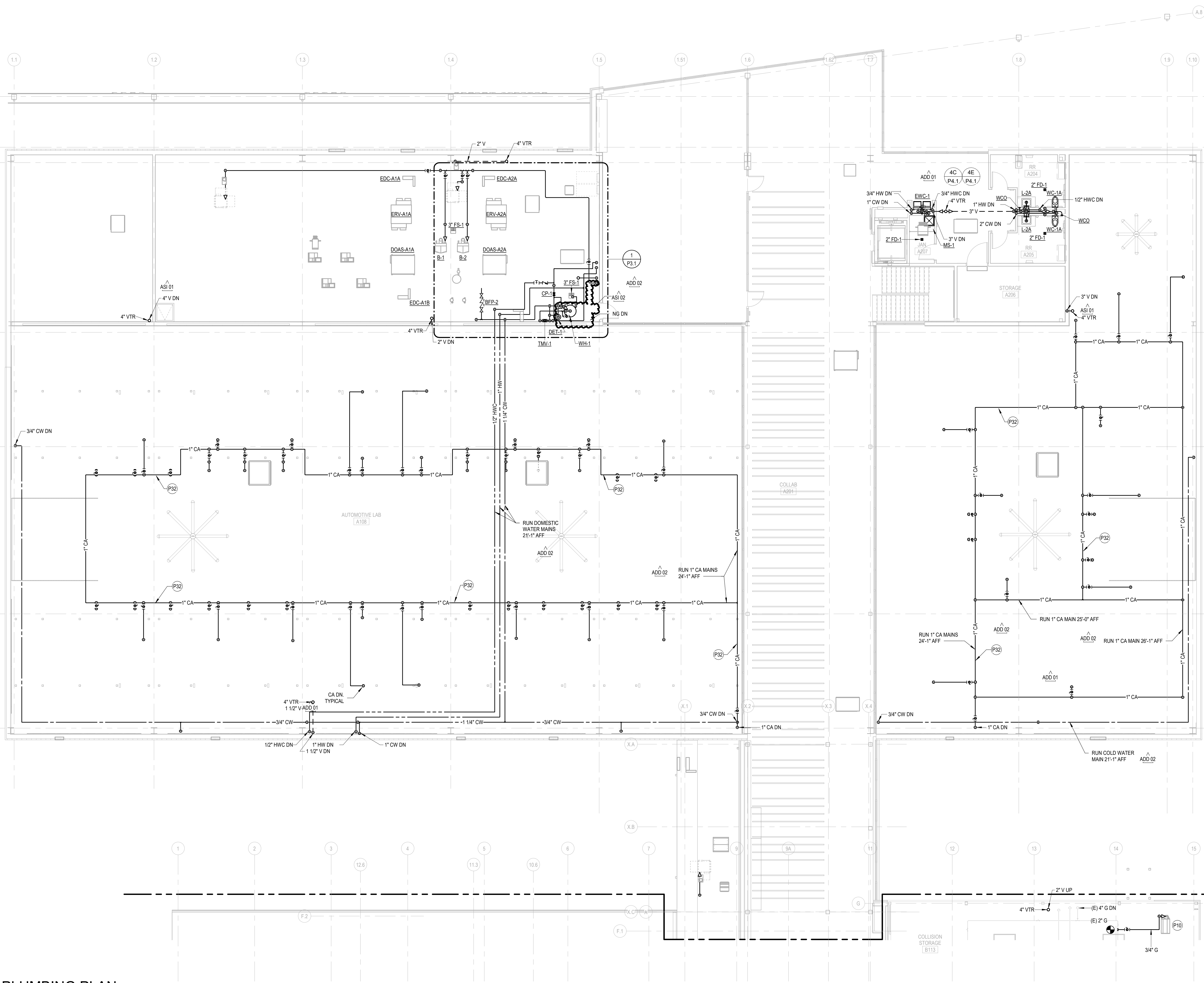
P2.1B

Autodesk Doc/113-2126-00 MCC Automotive Institute/13-2126-00_MCC Automotive Center_MEP_2022.rvt
5/31/2024 10:21:09 AM



LEVEL 02 - AREA A - PLUMBING PLAN

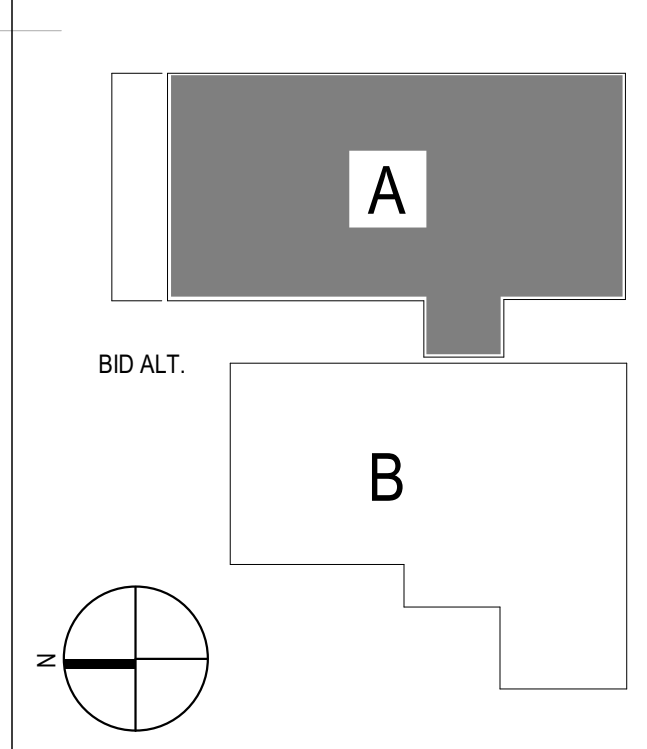
SCALE: 1/8" = 1'-0"



SHEET NOTES

- P10 CONNECT TO GAS FIRED INFRARED HEATER. REFER TO GAS CONNECTION DETAIL FOR FURTHER REFERENCE. REGULATE PRESSURE TO MANUFACTURER RECOMMENDED VALUES.
- P32 ALL COMPRESSED AIR PIPING MAINS TO BE 1" ALL COMPRESSED AIR PIPING BRANCHES TO BE 3/4" PROVIDE ISOLATION VALVE ON EACH COMPRESSED AIR PIPING BRANCH AS INDICATED.

KEY PLAN



MCC AUTOMOTIVE INSTITUTE
ADDITION AND REMODELS
METROPOLITAN COMMUNITY COLLEGE - LONGVIEW
500 SW LONGVIEW RD.
LEES SUMMIT, MO 64081

100%
CONSTRUCTION
DOCUMENTS
04.26.24
REVISIONS

| | | |
|--------|----------|----------|
| ADD 01 | 02/16/24 | Addendum |
| ADD 02 | 02/28/24 | Addendum |
| ASI 01 | 04/23/24 | ASI |
| ASI 02 | 05/31/24 | ASI |

13-23128-00
LEVEL 02 - AREA
A - PLUMBING
PLAN

P2.2A

RELEASED FOR
CONSTRUCTION
As Noted on Plans Review

DLR GROUP
© DLR Group
7290 W 133rd Street
Overland Park, KS 66213
CA No. 000939

ARCHITECT
DLR GROUP
7290 W 133RD ST.
OVERLAND PARK, KS 66213
P: (913) 897-7811 F: (402) 330-2749

STRUCTURAL ENGINEER
DLR GROUP
7290 W 133RD ST.
OVERLAND PARK, KS 66213
P: (913) 897-7811 F: (402) 330-2749

MEP ENGINEERS
DLR GROUP
7290 W 133RD ST.
OVERLAND PARK, KS 66213
P: (913) 897-7811 F: (402) 330-2749

CIVIL ENGINEER
TALIAFERRO & BROWNE, INC
1020 E. 8TH ST.
KANSAS CITY, MO 64118
P: (816) 283-3456

**AVITELECOM/ACOUSTICS/
SECURITY DESIGNER**
BRANCHPATTERN
1508 GRAND BOULEVARD
KANSAS CITY, MO 64108
P: (816) 283-3456

PROFESSIONAL
KANSAS
CIVIL ENGINEER
NUMBER
PE-000939-0004
EXPIRATION
12/31/24

Autodesk Docu/13-2125-00 MCC Automotive Institute/13-2125-00_MCC Automotive Center_MEP_2022.rvt
5/31/2024 10:21:39 AM

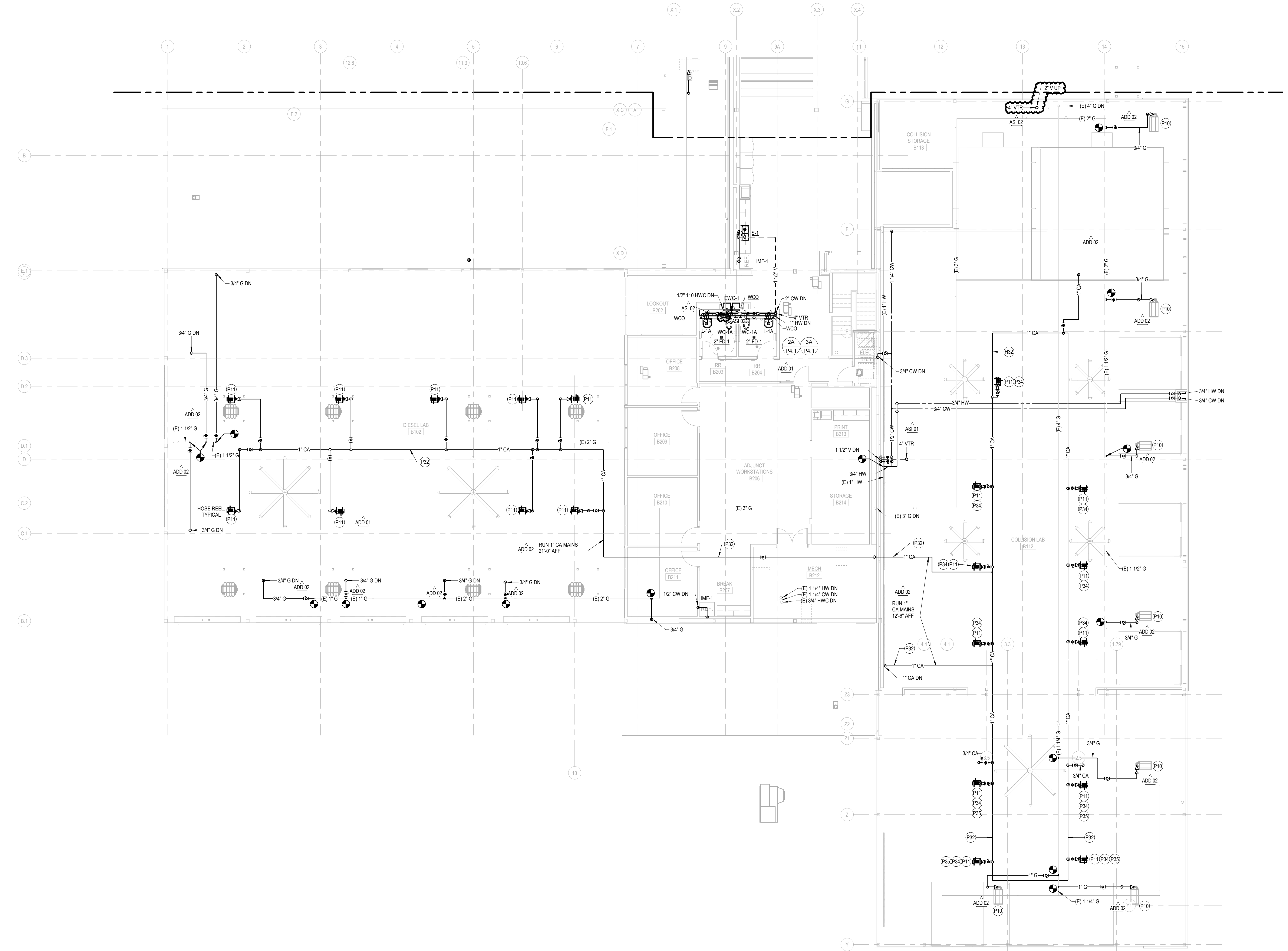
1

2

3

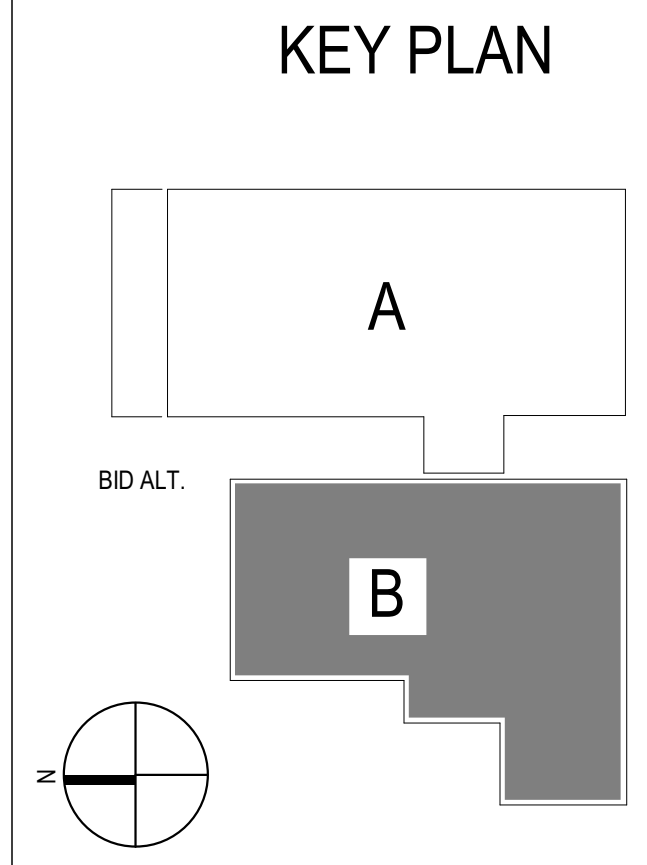
4

5



 **LEVEL 02 - AREA B - PLUMBING PLAN**
SCALE: 1/8" = 1'-0"

- SHEET NOTES**
- H32 PROVIDE SIGNAGE STATING "GRINDING OF ALUMINUM AND MAGNESIUM MAY PRODUCE EXPLOSIVE DUST AND SHOULD NOT BE DONE IN THIS SPACE."
 - P10 CONNECT TO GAS FIRED INFRARED HEATER. REFER TO GAS CONNECTION DETAIL FOR FURTHER REFERENCE. REGULATE PRESSURE TO MANUFACTURER RECOMMENDED VALUES.
 - P11 PROVIDE REELCRAFT RT635-OLP OR EQUIVALENT COMPRESSED AIR HOSE REEL. MOUNT HOSE REELS ON PIPING GRID. REFER TO ARCHITECTURAL PLANS FOR HEIGHT.
 - P32 ALL COMPRESSED AIR PIPING MAINS TO BE 1" ALL COMPRESSED AIR PIPING BRANCHES TO BE 3/4" PROVIDE ISOLATION VALVE ON EACH COMPRESSED AIR PIPING BRANCH AS INDICATED.
 - P34 PLUMBING CONTRACTOR TO CONFIRM EXACT QUANTITIES AND LOCATIONS FOR COMPRESSED AIR HOSE REELS WITH OWNER PRIOR TO INSTALLATION. THE COMPRESSED AIR PIPING ARRANGEMENT IS FOR THE FINAL CONDITION. PENDING OWNER CONFIRMATION ON LOCATIONS AND QUANTITIES OF COMPRESSED AIR HOSE REELS. FOR TEMPORARY FLEX SPACE SITUATION AT BRANCH TEE FROM COMPRESSED AIR MAIN SHOWN TO COMPRESSED AIR HOSE REEL, ROUTE 3/4" COMPRESSED AIR PIPING OVER TO EITHER NORTH OR SOUTH WALL, WHICHEVER IS CLOSER, THEN RUN THE PIPING DOWN THE WALL TO 48" AFF. TERMINATE WITH QUICK DISCONNECT FITTING. THIS WILL BE A TEMPORARY CONDITION TO BE MODIFIED WHEN THE FLEX SPACE IS RENOVATED TO ITS FINAL CONDITION.



**MCC AUTOMOTIVE INSTITUTE
ADDITION AND REMODELS
METROPOLITAN COMMUNITY COLLEGE - LONGVIEW**

100%
CONSTRUCTION
DOCUMENTS

04.26.24
REVISIONS

| ADD 01 | 02/16/24 | Addendum |
|--------|----------|----------|
| ADD 02 | 02/23/24 | Addendum |
| ASI 01 | 04/23/24 | ASI |
| ASI 02 | 05/21/24 | ASI |

13-23128-00

LEVEL 02 - AREA
B - PLUMBING
PLAN

P2.2B

DLR GROUP
© DLR Group
7230 West 133rd Street
Overland Park, KS 66213
CA No. 000599

ARCHITECT
DLR GROUP
7230 W 133RD ST.
OVERLAND PARK, KS 66213
P: (913) 897-7811 F: (402) 330-2749

STRUCTURAL ENGINEER
DLR GROUP
7230 W 133RD ST.
OVERLAND PARK, KS 66213
P: (913) 897-7811 F: (402) 330-2749

MEP ENGINEERS
DLR GROUP
7230 W 133RD ST.
OVERLAND PARK, KS 66213
P: (913) 897-7811 F: (402) 330-2749

CIVIL ENGINEER
TALIAFERRO & BROWNE, INC
1020 E. 8TH ST.
KANSAS CITY, MO 64118
P: (816) 283-3456

**AVTELECOM/ACOUSTICS/
SECURITY DESIGNER**
BRANCHPATTERN
1508 GRAND BOULEVARD
KANSAS CITY, MO 64108
P: (816) 283-3456

**RELEASED FOR
CONSTRUCTION**
As Noted on Plans Review
06/03/2024

| DOMESTIC FIXTURE SCHEDULE | | | | | | | | | | | | | | | | | | | | | | | | | | |
|---------------------------|---|-----|----------------------|-------------------------|--------------|-------------------|---------|-----------------------|------------------|----------------------|-----------------|-----|---------------|---------------------|---------------------------|---------|-----|----------|--------|-------|------|----|---|-----------------|--------------|-------|
| ID | DESCRIPTION | QTY | MATERIAL DESCRIPTION | FINISH | TRIM | | | | FLOW FIXTURE | | | | FLUSH FIXTURE | | PIPE CONNECTION SIZE (IN) | | | | | | | | SPECIFICATION | BASIS OF DESIGN | | |
| | | | | | MANUFACTURER | MODEL | TYPE | MOTION SENSOR CONTROL | WATER FLOW (GPM) | TIMER DURATION (SEC) | WATER TEMP (°F) | | | VOL PER FLUSH (GAL) | MIN VOL PER FLUSH (GAL) | WASTE | | | VENT | WATER | | | | GAS | MANUFACTURER | MODEL |
| | | | | | | | | | | | COLD | HOT | MAX MIXED | | | PRIMARY | AUX | INDIRECT | | COLD | HOT | | | | | |
| BFP-1 | DOMESTIC WATER BACKFLOW PREVENTER | 1 | LEAD FREE, BRONZE | | | | | | | | 40 | | | | | | | | AS1 01 | 4" | | | LEAD FREE, BRONZE REDUCED PRESSURE ZONE ASSEMBLY. WATTS ICV-125-2-2 CHECK VALVE (INSTALL UPSTREAM OF BACKFLOW PREVENTER). | WATTS | SERIES LF909 | |
| BFP-2 | BOILER SYSTEM MAKEUP BACKFLOW PREVENTER | 1 | LEAD FREE, BRONZE | | | | | | | | 40 | | | | | | | | ADD 01 | 3/4" | | | LEAD FREE, BRONZE REDUCED PRESSURE ZONE ASSEMBLY. | WATTS | SERIES LF909 | |
| EEWS-1 | EMERGENCY EYEWASH WASH | 3 | STAINLESS STEEL | STAINLESS STEEL | | | | No | 3 | 0 | 40 | 120 | 85 | | | 1-1/4" | | | 1-1/4" | 1/2" | 1/2" | | STAINLESS WALL MOUNT EYEWASH WASH WITH STAINLESS STEEL COVER, CHROME PLATED BRASS TAILPIECE AND TRAP WITH 1-1/2" IPS WASTE CONNECTION, G3800LF THERMOSTATIC MIXING VALVE. | GUARDIAN | G1750BC | |
| EWC-1 | ELECTRIC WATER COOLER, ADULT ADA COMPLIANT, DUAL LEVEL WITH BOTTLE FILLER | 2 | GALVANIZED STEEL | STAINLESS STEEL CABINET | | | | No | 0.13 | 15 | 40 | | 40 | | | 2" | | | 1-1/2" | 1/2" | | | TWO STATION WATER COOLER WITH BOTTLE FILLER, 1/4 HP, 115/60 REFRIGERATION COMPRESSOR, PROVIDE WITH CHROME 1-1/4" CAST BRASS 17 GAGE P-TAP, CHROME SUPPLY PIPES WITH METAL WHEEL HANDLE STOPS, PROVIDE MODEL LKAPREZL APRON. | ELKAY | EZSLR18WSSK | |
| HB-1 | EXTERIOR WALL HYDRANT | 8 | | | | | MANUAL | No | 2.5 | 0 | 40 | | 40 | | | | | | | 3/4" | | | PROVIDE WITH LOOSE KEY TO OPERATE HYDRANT, FREEZELESS - SEE SPECIFICATION. | WOODFORD | MODEL 65 | |
| HB-2 | INTERIOR WALL HYDRANT | 1 | | | | | MANUAL | No | 2.5 | 0 | 40 | | 40 | | | | | | | 3/4" | | | PROVIDE WITH LOOSE KEY TO OPERATE HYDRANT, ANTI-SIPHON PROTECTED DESIGNED FOR USE IN TEMPERATURE CONTROLLED CLIMATE. | WOODFORD | MODEL 74 | |
| HB-3 | INTERIOR WALL HYDRANT | 1 | | | | | MANUAL | No | 2.5 | 0 | 40 | 120 | 120 | | | | | | | | 3/4" | | PROVIDE WITH LOOSE KEY TO OPERATE HYDRANT, ANTI-SIPHON PROTECTED DESIGNED FOR USE IN TEMPERATURE CONTROLLED CLIMATE. | WOODFORD | MODEL 74 | |
| IMF-1 | ICE MAKER OUTLET BOX | 2 | GALVANIZED STEEL | GALVANIZED STEEL | | | | No | 0.5 | 0 | 40 | 120 | 105 | | | | | | | 1/2" | 3/4" | 0" | GALVANIZED ICE MACHINE BOX. | GUY GRAY | BIM875 | |
| L-1A | LAVATORY, WALL-MOUNT, ADULT ADA COMPLIANT | 8 | WHITE VITREOUS CHINA | WHITE | SLOAN | EBF-85 | BATTERY | Yes | 0.75 | 12 | 40 | 120 | 105 | | | 1-1/2" | | | 1-1/2" | 1/2" | 1/2" | | WHITE, VITREOUS CHINA 20" X 18" WALL HUNG LAVATORY WITH HOLES ON 4" CENTERS. CONCEALED ARM CARRIER CHROME 1-1/4" CAST BRASS 17 GAGE P-TAP. CHROME SUPPLY PIPES WITH METAL WHEEL HANDLE STOPS ADA COVER INSULATION FOR WATER AND DRAIN PIPES. SLOAN OPTIMA EBF-85 BATTERY OPERATED FAUCET. PROVIDE GRID DRAIN, PROVIDE 0.75 GPM FLOW RESTRICTION AERATOR. PROVIDE CHROME PLATED BRASS TAILPIECE AND GRID DRAIN. PROVIDE CHROME PLATED BRASS P-TAP, VALVE BELOW LAV. SEE ARCHITECTURAL PLANS FOR MOUNTING HEIGHT. | SLOAN | SS-3003 | |
| L-2A | LAVATORY, UNDER COUNTER-MOUNT, ADA COMPLIANT | 2 | WHITE VITREOUS CHINA | WHITE | SLOAN | EBF-85 | BATTERY | Yes | 0.75 | 12 | 40 | 120 | 105 | | | 1-1/2" | | | 1-1/2" | 1/2" | 1/2" | | WHITE, VITREOUS CHINA, 19"x17" OVAL COUNTER TOP LAVATORY WITH HOLES ON 4" CENTERS. CHROME 1-1/4" CAST BRASS 17 GAGE P-TAP. CHROME SUPPLY PIPES WITH METAL WHEEL HANDLE STOPS. SLOAN OPTIMA EBF-85 BATTERY OPERATED FAUCET. PROVIDE GRID DRAIN, PROVIDE 0.75 GPM FLOW RESTRICTION AERATOR. INSTALL ADA COVER INSULATION FOR WATER AND DRAIN PIPES ACCESSIBLE BELOW COUNTER. PROVIDE AN ASSE 1070 TEMPERING VALVE BELOW LAV. | SLOAN | SS-3001 | |
| MS-1 | MOP SINK - FLOOR MOUNTED | 2 | TERRAZZO | ADD 02 | FIAT | 830 AA | MANUAL | No | 2.5 | 0 | 40 | 120 | 105 | | | 3" | | | | 2" | 3/4" | | 36/36 FLOOR MOUNTED STOCKTON TERRAZZO MOP BASIN 830 AA WALL MOUNTED FAUCET WITH VACUUM BREAKER, PAIL HOOK, AND HOSE THREAD SPOUT, 889 CC MOP BRACKET, 1239 BB 36 ALUMINUM BUMPER GUARDS, 1453 BB SS STRAINER. ADD 02 | FIAT | T58-600 | |
| SH-1A | DUAL SHOWER WITH ADA HANDSHOWER, GRAB BAR, AND ADA SLIDE | 2 | | | SYMMONS | C-96-500-B30-V-QD | MANUAL | No | 1.5 | 300 | 40 | 120 | 105 | | | 2" | | | 1-1/2" | 1/2" | 1/2" | | 30" VANDAL RESISTANT CAST WALLMOUNT 1.5 GPM SHOWERHEAD, PRESSURE BALANCING CARTRIDGE WITH CHECKS, POLISHED CHROME PLATED FINISH, VALVE TRIM WITH METAL LEVER HANDLE AND 24" STAINLESS STEEL BAR WITH ADA SLIDE HANDSHOWER, TWO INTEGRAL CHECK VALVES AND SHOWER DIVERTER VALVE. INSTALL LINEAR SHOWER DRAIN, TDS, AT REAR WALL OF SHOWER. SEE ARCHITECTURAL PLANS FOR MOUNTING HEIGHT AND OTHER REQUIRED ACCESSORIES. | BY OTHERS | BY OTHERS | |
| UR-1 | URINAL, 0.125 GPF | 2 | WHITE VITREOUS CHINA | WHITE | SLOAN | 8186-0.125 | BATTERY | Yes | | | 40 | | 40 | 0.125 | 0.125 | 2" | | | 1-1/2" | 3/4" | | | ULTRA HIGH EFFICIENCY, WHITE, VITREOUS CHINA, WASHOUT FLUSH ACTION URINAL OPERATING IN THE RANGE OF 0.125 TO 0.50 GALLONS PER FLUSH. SLOAN 8186-0.125, 0.125 GPF EXPOSED SENSOR OPERATED, BATTERY POWERED, URINAL FLUSH VALVE, 3/4" I.P.S. SCREWDRIVER BACK-CHECK ANGLE STOP WITH PROTECTIVE CAP, ADJUSTABLE TAILPIECE, VACUUM FLUSH CONNECTION AND SPUD COUPLING FOR 3/4" TOP SPUD. SEE ARCHITECTURAL PLANS FOR MOUNTING HEIGHT. | SLOAN | SU-1009 | |
| UR-1A | URINAL, 0.125 GPF, ADA COMPLIANT | 1 | WHITE VITREOUS CHINA | WHITE | SLOAN | 8186-0.125 | BATTERY | Yes | | | 40 | | 40 | 0.125 | 0.125 | 2" | | | 1-1/2" | 3/4" | | | ULTRA HIGH EFFICIENCY, WHITE, VITREOUS CHINA, WASHOUT FLUSH ACTION URINAL OPERATING IN THE RANGE OF 0.125 TO 0.50 GALLONS PER FLUSH. SLOAN 8186-0.125, 0.125 GPF EXPOSED SENSOR OPERATED, BATTERY POWERED, URINAL FLUSH VALVE, 3/4" I.P.S. SCREWDRIVER BACK-CHECK ANGLE STOP WITH PROTECTIVE CAP, ADJUSTABLE TAILPIECE, VACUUM FLUSH CONNECTION AND SPUD COUPLING FOR 3/4" TOP SPUD. SEE ARCHITECTURAL PLANS FOR MOUNTING HEIGHT. | SLOAN | SU-1009 | |
| WC-1 | WATER CLOSET, WALL MOUNT, 1.28 GPF | 3 | WHITE VITREOUS CHINA | WHITE | SLOAN | G2 8111-1.28 | BATTERY | Yes | | | 40 | | 40 | 1.28 | 1.28 | 4" | | | 2" | 1" | | | WHITE, ELONGATED BOWL, SIPHON JET, 1.1-1.6 GPF VITREOUS CHINA, OLSONITE NO 95 - WHITE OPEN FRONT SEAT, CHECK HINGE LESS COVER. WADE HEAVY DUTY CARRIER, SLOAN G2 8111-1.28 EXPOSED 1.28 GPF, BATTERY POWERED, INFRARED SENSOR OPERATED FLUSH VALVE, 1" I.P.S. SCREWDRIVER BACK-CHEK, VANDAL RESISTANT STOP GAP, SPUD COUPLING FOR 1-1/2" TOP SPUD. | SLOAN | ST-2459 | |
| WC-1A | WATER CLOSET, WALL MOUNT, 1.28 GPF, ADA COMPLIANT | 8 | WHITE VITREOUS CHINA | WHITE | SLOAN | G2 8111-1.28 | BATTERY | Yes | | | 40 | | 40 | 1.28 | 1.28 | 4" | | | 2" | 1" | | | WHITE, ELONGATED BOWL, SIPHON JET, 1.1-1.6 GPF VITREOUS CHINA, OLSONITE NO 95 - WHITE OPEN FRONT SEAT, CHECK HINGE LESS COVER. WADE HEAVY DUTY CARRIER, SLOAN G2 8111-1.28 EXPOSED 1.28 GPF, BATTERY POWERED, INFRARED SENSOR OPERATED FLUSH VALVE, 1" I.P.S. SCREWDRIVER BACK-CHEK, VANDAL RESISTANT STOP GAP, SPUD COUPLING FOR 1-1/2" TOP SPUD. | SLOAN | ST-2459 | |
| WF-1 | 3-STATION, WALL MOUNT, HAND WASH SINK | 5 | WHITE VITREOUS CHINA | WHITE | ELKAY | LK940GND654H | MANUAL | No | 1.5 | 0 | 40 | 120 | 105 | | | 2" | | | 1-1/2" | 1/2" | 1/2" | | WALL MOUNT, THREE STATION HAND WASH SINK, #14 GAUGE, TYPE 304 STAINLESS, BUFFED SATIN FINISH, HOLES AT 8" O.C. 8" BOWL DEPTH, CENTER DRAIN CONNECTION, PROVIDE WITH (3) ELKAY LK940GND654H FAUCETS WITH 4" WRISTBLADE HANDLES. PROVIDE CHROME PLATED BRASS P-TAP, PROVIDE LOOSE KEY STOPS AND FLEXIBLE RISERS, PROVIDE LK18B DRAIN AND CHROME PLATED BRASS TAILPIECE. INSULATE EXPOSED TAILPIECE, P-TAP, AND WATER RISERS. REFER TO SPECIFICATIONS FOR INSULATION METHODS. | ELKAY | EWMA7220C | |

OIL/SAND INTERCEPTOR SCHEDULE

| GENERAL: A. BASIS OF DESIGN MODEL NUMBERS ARE FOR REFERENCE ONLY. BID EQUIPMENT TO PROVIDE THE INDICATED PERFORMANCE. | | | | | | | | | | | | | | | | | | |
|--|--------------|----------------------|----------------------|-------------------|----------------|-----|--------|--------------|------------------------------|--------------------------------|-------|--------------------|--------|---------|-----------------|--------------|---------|-------|
| NOTES: 1. PROVIDE WITH H20 RATED PICKABLE CAST IRON COVERS. | | | | | | | | | | | | | | | | | | |
| ID | TYPE | MATERIAL DESCRIPTION | COVER DESCRIPTION | DESIGN FLOW (GPM) | CAPACITY (GAL) | | | INSTALLATION | | PIPE CONNS (IN) | | DIMENSIONS (FT-IN) | | | BASIS OF DESIGN | | | NOTES |
| | | | | | LIQUID | OIL | SOLIDS | ARRANGEMENT | BOTTOM OF EQUIP ELEV (FT-IN) | ESTIMATED RISER HEIGHT (FT-IN) | INLET | OUTLET | LENGTH | WIDTH | HEIGHT | MANUFACTURER | MODEL | |
| OS-1 | OIL AND SAND | POLYETHYLENE | (3) CAST IRON COVERS | 300 | 2,000 | 638 | 1,077 | BELOW GRADE | 9'-4" | 3'-3" | 4" | 4" | 168" | 67 3/4" | 67 3/4" | STRIEM | OT-2000 | 1 |

| FIRE PROTECTION AND PLUMBING PIPING MATERIAL SCHEDULE | |
|--|--|
| SERVICE | MATERIAL |
| PIPING BETWEEN FIRE-DEPARTMENT CONNECTIONS AND CHECK VALVES | 1. GALVANIZED, STANDARD-WEIGHT STEEL PIPE WITH GROOVED ENDS, GROOVED-END-PIPE COUPLINGS, AND GROOVED JOINTS. |
| WET-PIPE SPRINKLER SYSTEM, NPS 2 AND SMALLER | 1. STANDARD-WEIGHT OR SCHEDULE 30, BLACK-STEEL PIPE WITH THREADED ENDS, UNCOATED, GRAY-IRON THREADED FITTINGS, AND THREADED JOINTS. 2. STANDARD-WEIGHT OR SCHEDULE 30, BLACK-STEEL PIPE WITH CUT-OR ROLL-GROOVED ENDS, UNCOATED, GROOVED-END FITTINGS FOR STEEL PIPING, GROOVED-END-PIPE COUPLINGS FOR STEEL PIPING, AND GROOVED JOINTS |
| STANDARD PRESSURE, WET-PIPE SPRINKLER SYSTEM, NPS 2-1/2 AND LARGER | 1. STANDARD-WEIGHT OR SCHEDULE 30, BLACK-STEEL PIPE WITH THREADED ENDS, UNCOATED, GRAY-IRON THREADED FITTINGS, AND THREADED JOINTS. 2. STANDARD-WEIGHT OR SCHEDULE 30, BLACK-STEEL PIPE WITH CUT-OR ROLL-GROOVED ENDS, UNCOATED, GROOVED-END FITTINGS FOR STEEL PIPING, GROOVED-END-PIPE COUPLINGS FOR STEEL PIPING, AND GROOVED JOINTS. 3. SCHEDULE 10 BLACK-STEEL PIPE WITH ROLL-GROOVED ENDS, UNCOATED, GROOVED-END FITTINGS FOR STEEL PIPING, GROOVED-END-PIPE COUPLINGS FOR STEEL PIPING, AND GROOVED JOINTS |
| SERVICE | MATERIAL |
| UNDER-BUILDING-SLAB, DOMESTIC WATER, BUILDING-SERVICE PIPING, NPS 3 (DN 80) AND SMALLER | 1. SOFT COPPER TUBE, ASTM B 88, TYPE K (ASTM B 88M, TYPE A); WROUGHT-COPPER, SOLDER-JOINT FITTINGS, AND BRAZED JOINTS. |
| UNDER-BUILDING-SLAB, DOMESTIC WATER, BUILDING-SERVICE PIPING, NPS 4 AND LARGER | 1. SOFT COPPER TUBE, ASTM B 88, TYPE K (ASTM B 88M, TYPE A); WROUGHT-COPPER, SOLDER-JOINT FITTINGS, AND BRAZED JOINTS. |
| UNDER-BUILDING-SLAB, DOMESTIC WATER PIPING, NPS 2 AND SMALLER | 1. COPPER TUBE, ASTM B88, TYPE L (ASTM B88M, TYPE B); WROUGHT-COPPER, SOLDER-JOINT FITTINGS, AND BRAZED OR COPPER PRESSURE-SEAL-JOINT FITTINGS, AND PRESSURE SEALED JOINTS. |
| ABOVEGROUND DOMESTIC WATER PIPING, NPS 2 (DN 50) AND SMALLER | 1. HARD COPPER TUBE, ASTM B 88, TYPE L (ASTM B 88M, TYPE B CAST- OR WROUGHT-COPPER, SOLDER-JOINT FITTINGS, AND SOLDERED JOINTS. 2. HARD COPPER TUBE, ASTM B 88, TYPE L (ASTM B 88M, TYPE B COPPER PRESS-CONNECT FITTINGS, AND PRESS-CONNECT JOINTS. |
| ABOVEGROUND DOMESTIC WATER PIPING, NPS 2-1/2 TO NPS4 (DN 65 TO DN 100) | 1. HARD COPPER TUBE, ASTM B 88, TYPE L (ASTM B 88M, TYPE B CAST- OR WROUGHT-COPPER, SOLDER-JOINT FITTINGS, AND SOLDERED JOINTS. 2. HARD COPPER TUBE, ASTM B 88, TYPE L (ASTM B 88M, TYPE B COPPER PRESS-CONNECT FITTINGS, AND PRESS-CONNECT JOINTS. |
| ABOVEGROUND DOMESTIC WATER PIPING, NPS 5 TO NPS 8 (DN 125 TO DN 200) | 1. HARD COPPER TUBE, ASTM B 88, TYPE L (ASTM B 88M, TYPE B CAST- OR WROUGHT-COPPER, SOLDER-JOINT FITTINGS, AND BRAZED JOINTS. |
| SERVICE | MATERIAL |
| OUTDOOR, UNDERGROUND NATURAL-GAS PIPING | 1. PE PIPE AND FITTINGS, JOINED BY HEAT FUSION, SERVICE-LINE RISERS WITH TRACER WIRE TERMINATED IN AN ACCESSIBLE LOCATION. 2. STEEL PIPE WITH WROUGHT-STEEL FITTINGS AND WELDED JOINTS. COAT PIPE AND FITTINGS WITH PROTECTIVE COATING FOR STEEL PIPING. |
| OUTDOOR, ABOVEGROUND NATURAL-GAS PIPING, NPS 3 AND SMALLER | 1. ANNEALED-TEMPER COPPER TUBE WITH WROUGHT-COPPER FITTINGS AND BRAZED JOINTS. COAT PIPE AND FITTINGS WITH PROTECTIVE COATING FOR COPPER TUBING. 2. STEEL PIPE WITH MALLEABLE-IRON FITTINGS AND THREADED JOINTS. 3. STEEL PIPE WITH WROUGHT-STEEL FITTINGS AND WELDED JOINTS. |
| OUTDOOR, ABOVEGROUND NATURAL-GAS PIPING, LARGER THAN NPS 3 | 1. STEEL PIPE WITH WROUGHT-STEEL FITTINGS AND WELDED JOINTS. 2. STEEL PIPE WITH WROUGHT-STEEL FITTINGS AND WELDED JOINTS. COAT PIPE AND FITTINGS WITH PROTECTIVE COATING FOR STEEL PIPING 3. STEEL PIPE WITH PRESS-CONNECT FITTINGS AND PRESS-CONNECT JOINTS. |
| INDOOR, ABOVEGROUND, CONCEALED, BRANCH PIPING (TO FIXTURES AND EQUIPMENT) 0.5 PSIG (3.45 KPA) OR LESS, NPS 2 AND SMALLER | 1. CORRUGATED STAINLESS-STEEL TUBING GAS PIPING SYSTEMS SHALL BE BONDED TO THE ELECTRICAL SERVICE GROUNDING ELECTRODE SYSTEM. THE BONDING JUMPER SHALL CONNECT TO A METALLIC PIPE OR FITTING BETWEEN THE POINT OF DELIVERY AND THE FIRST DOWNSTREAM CSST FITTING. THE BONDING JUMPER SHALL BE NOT SMALLER THAN 6 AWG COPPER WIRE OR EQUIVALENT. GAS PIPING SYSTEMS THAT CONTAIN ONE OR MORE SEGMENTS OF CSST SHALL BE BONDED IN ACCORDANCE WITH THE ABOVE. IT SHALL BE THE RESPONSIBILITY OF THE CONTRACTOR PROVIDING AND INSTALLING CSST TO PROVIDE AND INSTALL THE REQUIRED BONDING JUMPERS. 2. STEEL PIPE WITH MALLEABLE-IRON FITTINGS AND THREADED JOINTS. 3. STEEL PIPE WITH MECHANICAL JOINT FITTINGS. |
| INDOOR, ABOVEGROUND, EXPOSED, BRANCH PIPING (TO FIXTURES AND EQUIPMENT) 0.5 PSIG (3.45 KPA) OR LESS, NPS 3 AND SMALLER | 1. STEEL PIPE WITH MALLEABLE-IRON FITTINGS AND THREADED JOINTS 2. STEEL PIPE WITH PRESS-CONNECT FITTINGS AND PRESS-CONNECT JOINTS |
| INDOOR, ABOVEGROUND, DISTRIBUTION PIPING 0.5 PSIG (3.45 KPA) OR LESS, NPS 3 AND SMALLER | 1. STEEL PIPE WITH MALLEABLE-IRON FITTINGS AND THREADED JOINTS. 2. STEEL PIPE WITH WROUGHT-STEEL FITTINGS AND WELDED JOINTS. 3. STEEL PIPE WITH PRESS-CONNECT FITTINGS AND PRESS-CONNECT JOINTS (NPS 4 AND SMALLER). |
| INDOOR, ABOVEGROUND, DISTRIBUTION PIPING 0.5 PSIG (3.45 KPA) OR LESS, LARGER THAN NPS 3 | 1. STEEL PIPE WITH WROUGHT-STEEL FITTINGS AND WELDED JOINTS. |
| INDOOR, ABOVEGROUND, DISTRIBUTION PIPING ABOVE 0.5 PSIG (3.45 KPA) | 1. STEEL PIPE WITH WROUGHT-STEEL FITTINGS AND WELDED JOINTS. |
| INDOOR, UNDERGROUND, BELOW BUILDING SLAB, PIPING | 1. CORRUGATED STAINLESS-STEEL TUBING (CSST) WITH MECHANICAL FITTINGS HAVING SOCKET OR THREADED ENDS TO MATCH ADJACENT PIPING INSTALLED IN CONTAINMENT CONDUIT AS DESCRIBED IN 3.11.H. |
| INDOOR, CONTAINMENT CONDUIT | STEEL PIPE WITH WROUGHT-STEEL FITTINGS AND WELDED JOINTS. COAT PIPE AND FITTINGS WITH PROTECTIVE COATING FOR STEEL PIPING |
| INDOOR, CONTAINMENT CONDUIT VENT PIPING | STEEL PIPE WITH MALLEABLE-IRON FITTINGS AND THREADED OR WROUGHT-STEEL FITTINGS WITH WELDED JOINTS. COAT UNDERGROUND PIPE AND FITTINGS WITH PROTECTIVE COATING FOR STEEL PIPING |
| SERVICE | MATERIAL |
| NPS 15 AND SMALLER | ASTM D 3034, SDR 26, WITH BELL-AND-SPIGOT ENDS FOR GASKETED JOINTS WITH ASTM F 477, ELASTOMERIC SEALS. |
| NPS 18 AND LARGER | ASTM F673, WALL THICKNESS T-1, WITH BELL-AND-SPIGOT ENDS FOR GASKETED JOINTS WITH ASTM F 477, ELASTOMERIC SEALS. |
| SANITARY SEWERS - 221313 | MATERIAL |
| ABOVEGROUND, SOIL AND WASTE PIPING | 1. HUBLESS CAST-IRON SOIL PIPE AND FITTINGS REGULAR-DUTY SHIELDED, STAINLESS-STEEL COUPLINGS, AND HUBLESS-COUPLING JOINTS. 2. SOLID-WALL PVC PIPE, PVC SOCKET FITTINGS, AND SOLVENT-CEMENTED JOINTS WRAPPED WITH NONCOMBUSTIBLE INSULATION LISTED FOR PLENUM INSTALLATION. |
| UNDERGROUND, SOIL AND WASTE PIPING | 1. HUBLESS CAST-IRON SOIL PIPE AND FITTINGS, STANDARD, SHIELDED, STAINLESS-STEEL COUPLINGS, AND HUBLESS-COUPLING JOINTS. 2. SOLID-WALL PVC PIPE, PVC SOCKET FITTINGS, AND SOLVENT-CEMENTED JOINTS. |
| ABOVEGROUND FLOOR MAINS | 1. GALVANIZED STEEL PIPE, PRESSURE FITTINGS, AND THREADED JOINTS. 2. TYPE L COPPER, SOLDERED JOINTS. |
| ABOVE AND BELOW GROUND VENT PIPING | 1. HUBLESS CAST-IRON SOIL PIPE AND FITTINGS, STANDARD, SHIELDED, STAINLESS-STEEL COUPLINGS, AND HUBLESS-COUPLING JOINTS. 2. SOLID-WALL PVC PIPE, PVC SOCKET FITTINGS, AND SOLVENT-CEMENTED JOINTS. WHERE INSTALLED IN PLENUMS, WRAP WITH NONCOMBUSTIBLE INSULATION LISTED FOR PLENUM INSTALLATION. |
| INDOOR, CONDENSATE-DRAIN PIPING | TYPE M (TYPE CL DRAWN-TEMPER COPPER TUBING, WROUGHT-COPPER FITTINGS, AND SOLDERED JOINTS OR PRESSURE SEAL JOINTS. |
| OUTDOOR, CONDENSATE-DRAIN PIPING | SCHEDULE 40 PVC PLASTIC PIPE AND FITTINGS AND SOLVENT-WELDED JOINTS. |
| STORM DRAINAGE PIPING - 221415 | MATERIAL |
| ABOVEGROUND STORM DRAINAGE PIPING | 1. HUBLESS, CAST-IRON SOIL PIPE AND FITTINGS, HEAVY-DUTY, HUBLESS-PIPING COUPLINGS, AND COUPLED JOINTS. 2. SOLID-WALL PVC PIPE, PVC SOCKET FITTINGS, AND SOLVENT-CEMENTED JOINTS. WHERE INSTALLED IN PLENUMS, WRAP WITH NONCOMBUSTIBLE INSULATION LISTED FOR PLENUM INSTALLATION. |
| UNDERGROUND STORM DRAINAGE PIPING | 1. HUBLESS, CAST-IRON SOIL PIPE AND FITTINGS, HEAVY DUTY HUBLESS-PIPING COUPLINGS, AND COUPLED JOINTS. 2. SOLID-WALL PVC PIPE, PVC SOCKET FITTINGS, AND SOLVENT-CEMENTED JOINTS. |
| COMPRESSED AIR PIPING - 221513 | MATERIAL |
| LOW-PRESSURE COMPRESSED-AIR DISTRIBUTION PIPING | 1. RIGID ALUMINUM PIPE |
| DRAIN PIPING, NPS 2 (DN 50) AND SMALLER | 1. PVC PIPE AND FITTINGS |

| GENERAL: A. BASIS OF DESIGN MODEL NUMBERS ARE FOR REFERENCE ONLY. BID EQUIPMENT TO PROVIDE THE INDICATED PERFORMANCE. | | | | | | | | | | | | | | | | | | | | | | | | | |
|--|-----------------------------|------|-----|-----------------|--------------|------------------------------|---------------------|------|------------|----------------|------------------------|------------------|--------------------------|----------------|--------|--------------------------------|-----------------------------|----------|-----|-----------------|----------------------|---------------|-----------------|---|-------|
| NOTES: 1. ASSE 1017 COMPLIANT. | | | | | | | | | | | | | | | | | | | | | | | | | |
| ID | LOCATION | | QTY | MATERIAL | FINISH | FLUID DATA | | | | | | | VALVE DATA | | | | | | | ELECTRICAL DATA | | SPECIFICATION | BASIS OF DESIGN | | NOTES |
| | NAME | TYPE | | | | LVG WATER TEMP SETPOINT (°F) | ENT WATER TEMP (°F) | | FLOW (GPM) | MIN FLOW (GPM) | MAX PRESS DROP (FT WC) | RATED FLOW (GPM) | RATED PRESS DROP (FT WC) | CONN SIZE (IN) | | MAX ALLOW WORKING PRESS (PSIG) | MAX ALLOW WORKING TEMP (°F) | VOLT (V) | PH | | | | | | |
| | | | | | | | HOT | COLD | | | | | | INLET | OUTLET | | | | | | | | | | |
| TMV-1 | AREA A MECHANICAL MEZZANINE | | 1 | LEAD FREE BRASS | ROUGH BRONZE | WATER | 120 | 140 | 40 | 25 | 0.3 | 5 | 40 | 5 | 1" | 1 1/4" | 200 | 185 | 120 | 1 | DIGITAL MIXING VALVE | LEONARD VALVE | PNV-125-LF | 1 | |

| GENERAL: A. BASIS OF DESIGN MODEL NUMBERS ARE FOR REFERENCE ONLY. BID EQUIPMENT TO PROVIDE THE INDICATED PERFORMANCE. | | | | | | | | | | | | | | | | | |
|--|----------|-------|------------------------------|------------------|------------|----------------|-------------|--------------|-------------------|---------------------|--------------------|------------------------|----------------------|--------|--------------|-----------------|--------|
| ID | LOCATION | | MATERIAL | FINISH | SYSTEM | TYPE | ARRANGEMENT | VOLUME (GAL) | MAX ACCEPT FACTOR | ACCEPT VOLUME (GAL) | PRESS RELIEF (PSI) | PRE CHARGE PRESS (PSI) | UNIT DIMENSIONS (IN) | | WEIGHT (LBS) | BASIS OF DESIGN | |
| | NO. | NAME | | | | | | | | | | | DIA | HEIGHT | | MANUFACTURER | MODEL |
| (DET) 1 | 95 | Space | STEEL - POLYPROPYLENE LINING | RED OXIDE PRIMER | DOM. WATER | FIXED DIAPHRAM | INLINE | 6.4 | 0.50 | 3.2 | 150 | 36 | 12" | 18" | 70 | AMTROL | ST-12C |

| UTILITY SUMMARY | | |
|----------------------------------|--------|---------|
| EXISTING NATURAL GAS SERVICE: | TOTAL: | 5368CFH |
| EXISTING SANITARY SERVICE: | TOTAL: | 16.5DFU |
| NEW 4" SANITARY SERVICE: | TOTAL: | 76.5DFU |
| EXISTING DOMESTIC WATER SERVICE: | TOTAL: | 38.6GPM |
| NEW 3" DOMESTIC WATER SERVICE: | TOTAL: | 77.3GPM |