



May 20, 2024

Distribution:

Whitney Neese
New Mark Homes
5207 NW Crooked Rd
Parkville, MO 64152

Project:

Lot 193 Woodside Ridge
2233 NW Killarney Ln
Lee's Summit, MO 64081

COMPLIANCE LETTER

This letter shall serve as verification that a representative(s) from Apex Engineers, Inc. ("Apex") performed a design review for the flush double 2x10 joist at the entry for the above referenced project.

- The roof brace that bears within the stud wall between the bath and the laundry closet on the second floor shall be field verified. If the roof brace is verified to be bearing on the notched double 2x10 joist, the brace shall be moved to bear on a different double joist within the floor system.
- The notched double 2x10 joist shall have two PL1/4x3x11'-0" [(1) on each side of the joist] attached at the bottom of the double joist with 3/8" diameter grade A307 thru bolts at max 16" OC, with one bolt being 1.5" away from each end of the steel plate. Reference Figure 1 for section cut.

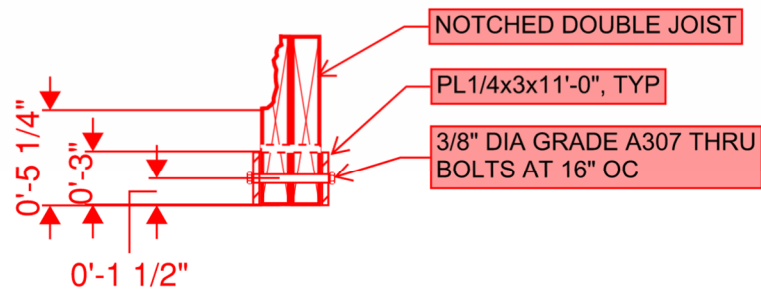


FIGURE 1

To the best of our knowledge, information and belief, construction of the above phases was in general conformance with the construction documents and approved changes.

LIMITATIONS

Apex has performed its services in a manner consistent with the standard of care and skill ordinarily exercised by members of our profession practicing under similar circumstances. The services of Apex should not be construed as Special Inspection services or full-time observation or inspection. Apex does not insure any result, nor does it warrant or guarantee that construction was properly performed. Even with constant monitoring, some construction defects may be missed. Apex is not responsible for the means, methods, sequences, and techniques of construction, since the contractor is solely responsible those and for the quality of work, adhering



to plans, specifications, and appropriate codes, and repairing defects, deficiencies or omission, regardless of whether a defect is observed.

In addition, the scope our services does not include any evaluation of the building or site for job-site safety and/or hazardous conditions. The contractor is solely responsible for safety and compliance with IRC, IBC, and OSHA standards.

Finally, Apex's scope of services does not include any environmental assessment (such as, but not limited to mold, mildew, presence of hazardous or toxic materials in the soil, surface water, ground water, etc.).

To the fullest extent permitted and allowed by law, Apex's client agrees to indemnify and hold harmless Apex and its owners, partners, officers, directors, employees, agents and sub-consultants, from and against all damage, liability and costs, including reasonable attorney's fees and cost of defense, arising out of the performance of these services, excepting only those damages, liabilities or costs attributable to the negligence or willful misconduct of Apex or its consultants.

Please call if Apex Engineers, Inc. can be of further assistance.

Best Regards,
Apex Engineers, Inc.

A handwritten signature in blue ink, appearing to read 'Connor Hobart'.

Connor Hobart
Design Engineer

A handwritten signature in blue ink, appearing to read 'Michael D. Brunin'.

Michael D. Brunin, P.E.
Principal

