



Project Lees Summit-Arc of Ozark



Unit Summary

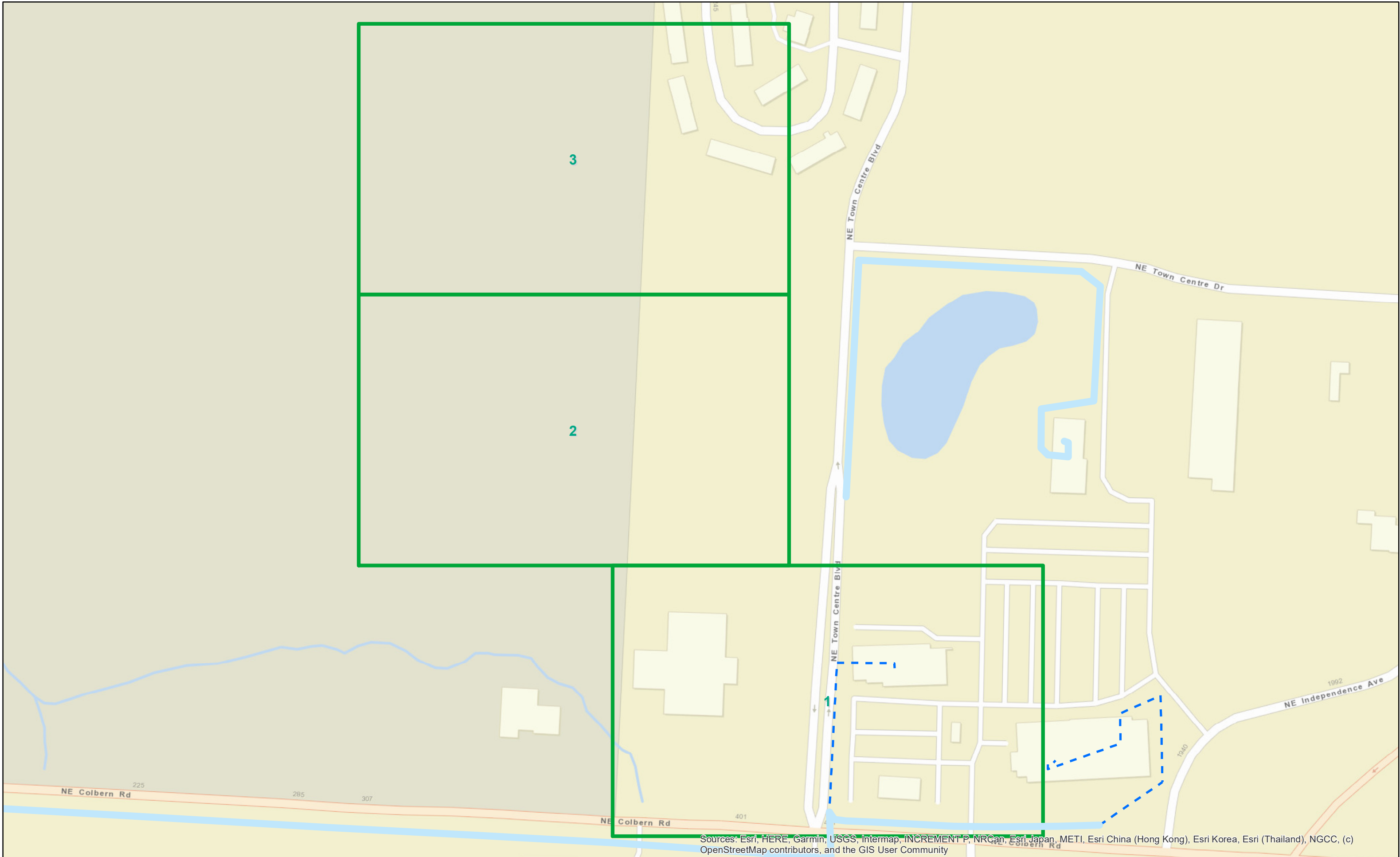
5/7/2024

Project: Lees Summit-Arc of Ozark

| Description | Part Number | Account Code | Preferred Vendor | Total Waste | Total Used | Total Order |
|-----------------|-------------|--------------|------------------|-------------|------------|-------------|
| BD3 | | | TBD | 0 | 1 | 1 |
| BM2(5/8)(8) | | | TBD | 0 | 1 | 1 |
| BM21 | | | TBD | 0 | 1 | 1 |
| BM2C | | | TBD | 0 | 4 | 4 |
| BM53 | | | TBD | 0 | 1 | 1 |
| HBFO(24) | | | TBD | 0 | 1 | 1 |
| HO-1 | | | TBD | 0 | 2 | 2 |
| Tracer Wire | | | TBD | 0 | 200 | 200 |
| UD(1x1x1.25) | | | TBD | 0 | 400 | 400 |
| UH-1 | | | TBD | 0 | 1 | 1 |
| UO(24) | | | TBD | 0 | 340 | 340 |
| UO(24)(HH Loop) | | | TBD | 0 | 100 | 100 |
| UO(6) | | | TBD | 0 | 200 | 200 |
| WHBFO | | | TBD | 0 | 1 | 1 |
| WUH | | | TBD | 0 | 1 | 1 |

Sheet Index

Lees Summit-Arc of Ozark



Sources: Esri, HERE, Garmin, USGS, Intermap, INCREMENT P, NRCan, Esri Japan, METI, Esri China (Hong Kong), Esri Korea, Esri (Thailand), NGCC, (c) OpenStreetMap contributors, and the GIS User Community

| Description | 1 | 2 | 3 | | | | | | | | | | | | | | | | | Quantity Used |
|-----------------|-----|----|-----|--|--|--|--|--|--|--|--|--|--|--|--|--|--|--|--|---------------|
| BM2C | 1 | 2 | 1 | | | | | | | | | | | | | | | | | 4 |
| HO-1 | 1 | 1 | | | | | | | | | | | | | | | | | | 2 |
| UD(1x1x1.25) | 340 | | 60 | | | | | | | | | | | | | | | | | 400 |
| UO(24) | 340 | | | | | | | | | | | | | | | | | | | 340 |
| UO(24)(HH Loop) | 50 | 50 | | | | | | | | | | | | | | | | | | 100 |
| WHBFO | 1 | | | | | | | | | | | | | | | | | | | 1 |
| WUH | 1 | | | | | | | | | | | | | | | | | | | 1 |
| BD3 | | 1 | | | | | | | | | | | | | | | | | | 1 |
| BM2(5/8)(8) | | 1 | | | | | | | | | | | | | | | | | | 1 |
| BM53 | | 1 | | | | | | | | | | | | | | | | | | 1 |
| HBFO(24) | | 1 | | | | | | | | | | | | | | | | | | 1 |
| UH-1 | | 1 | | | | | | | | | | | | | | | | | | 1 |
| BM21 | | | 1 | | | | | | | | | | | | | | | | | 1 |
| Tracer Wire | | | 200 | | | | | | | | | | | | | | | | | 200 |
| UO(6) | | | 200 | | | | | | | | | | | | | | | | | 200 |

BlueBird

Sheet: 1 of 3

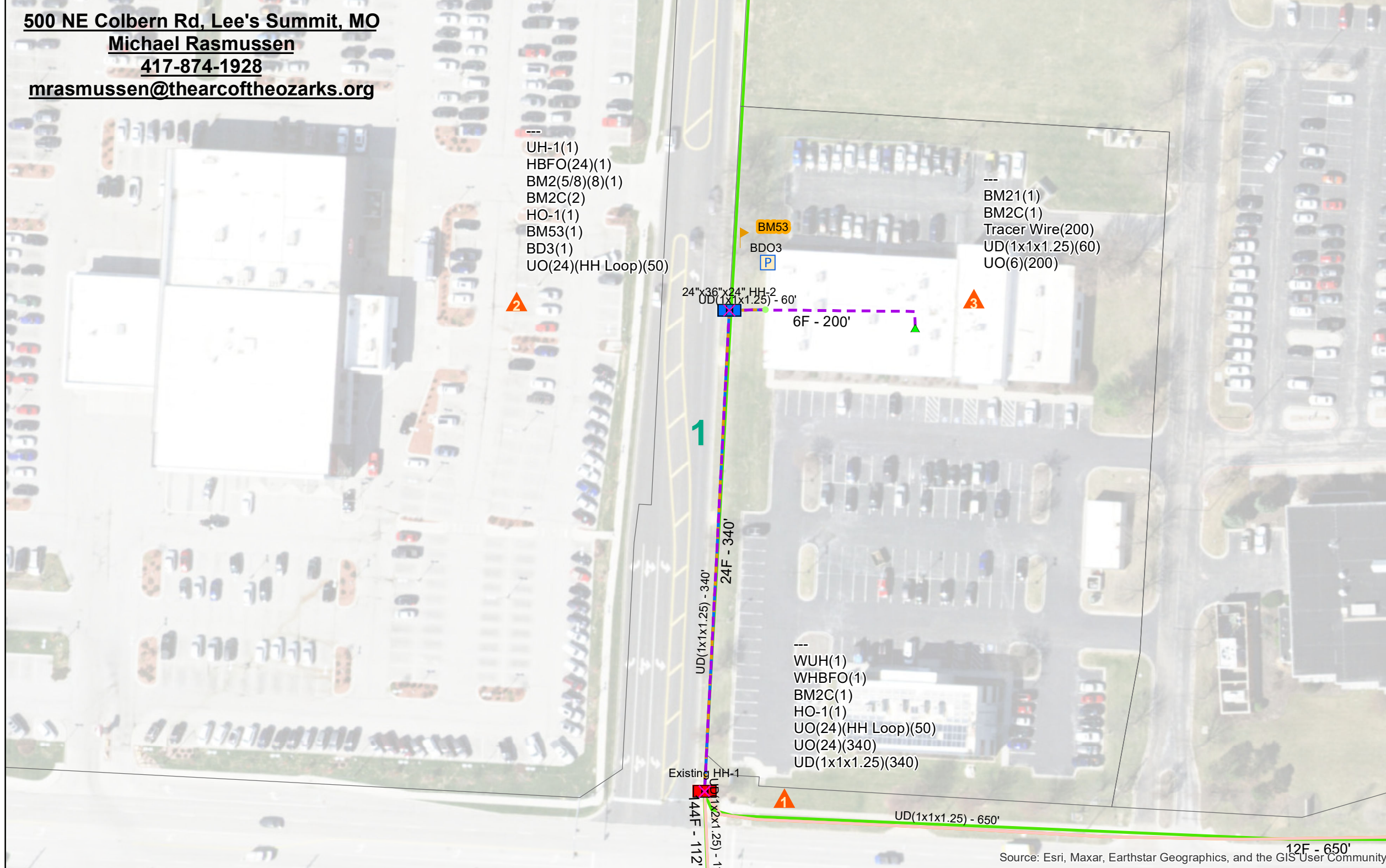
County: Jackson

Exchange: Lee's Summit

As Of: 5/7/2024

Date Approved:

500 NE Colbern Rd, Lee's Summit, MO
Michael Rasmussen
417-874-1928
mrasmusen@thearcoftheozarks.org



Legend

Signage

Type

- BM53

Additional Cable type

- HHcoil(50)

Splice Point

Subtype, Status

- Handhole, Existing
- Handhole, Proposed
- Pedestal, Proposed
- Structure, Proposed

Path Access

Subtype

- Handhole
- Virtual

Cable

Status, class, Used As

- Existing, UO, Distribution
- Proposed, UO, Distribution

Path

Status, Subtype

- Existing, UD(1x1x1.25)
- Existing, UD(1x2x1.25)
- Proposed, UD(1x1x1.25)

1 inch = 75 feet

N

Sources: Esri, HERE, Garmin, JSGS, Intermap.

Drafted by

Source: Esri, Maxar, Earthstar Geographics, and the GIS User Community

