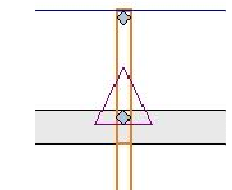


1st Floor Truss Layout
Scale: 3/16" = 1'

| HANGER SCHEDULE | Quantity |
|-----------------|----------|
| LUS24 | 17 |
| LUS26 | 0 |
| HUS26 | 0 |
| HHUS26-2 | 0 |
| HGUS26-2 | 0 |
| HGUS28-3 | 0 |
| LTHJA26 | 0 |
| TJC37 | 0 |
| TJC57 | 0 |
| HTS20 | 0 |
| (2) H2.5A | |

Triangle denotes the left end of the Truss as it appears on the Engineered Drawings provided.



Unless otherwise specified by Engineer Of Record, Wheeler Lumber, LLC recommends an uplift connection at each bearing point per the following:

| # of Uplift | Connector |
|-------------|-----------|
| 0 - 495: | (1) H2.5A |
| 495 - 990: | (2) H2.5A |
| 990 - 1245: | (1) HTS20 |

Installation per Simpson Strong-Tie guidelines.

For Reactions greater than 1245#, refer to EOR.

Wall Heights:
1st Floor = 9-1-2 U.N.O.
2nd Floor = 8-1-2 U.N.O.

| Wall Heights | Color |
|--------------|------------|
| 9-01-02 | Light Blue |
| 8-01-02 | Green |

| Customer | |
|------------------|-----------------------------|
| Job Name | Summit Homes |
| Job Site Address | Lot 182 Hawthorn Ridge |
| City, State | 1617 SW Arborway Terr MO |
| Designer | Lee's Summit (785) 746-4266 |
| Date | 4/29/2024 |
| Job # | B240091 |

Shop Drawing Approval

THIS IS A TRUSS LAYOUT DIAGRAM ONLY. These trusses are designed as individual building components to be incorporated into the building design at the specification of the building designer. See individual design sheets for each truss design identified on the placement drawing. The building designer is responsible for temporary and permanent bracing of the trusses during construction. The building designer is responsible for general guidance regarding bearing capacity of wood trusses, available from the Truss Plate Institute, 583 Dornifino Drive, Madison, WI 53179.

THIS LAYOUT IS THE SOLE SOURCE FOR FABRICATION OF TRUSSES AND VOIDS ALL PREVIOUS ARCHITECTURAL OR OTHER TRUSS LAYOUTS. REVIEW AND APPROVAL OF THIS LAYOUT MUST BE RECEIVED BEFORE ANY TRUSSES WILL BE BUILT. VERIFY ALL CONDITIONS TO INSURE AGAINST CHANGES THAT WILL RESULT IN EXTRA CHARGES TO YOU.

Wheeler Lumber
1959 Old Hwy 50 NE
Waverly, KS 66871

RELEASE FOR CONSTRUCTION
AS NOTED ON PLANS REVIEW
DEVELOPMENT SERVICES
LEE'S SUMMIT, MISSOURI
05/17/2024 3:08:18

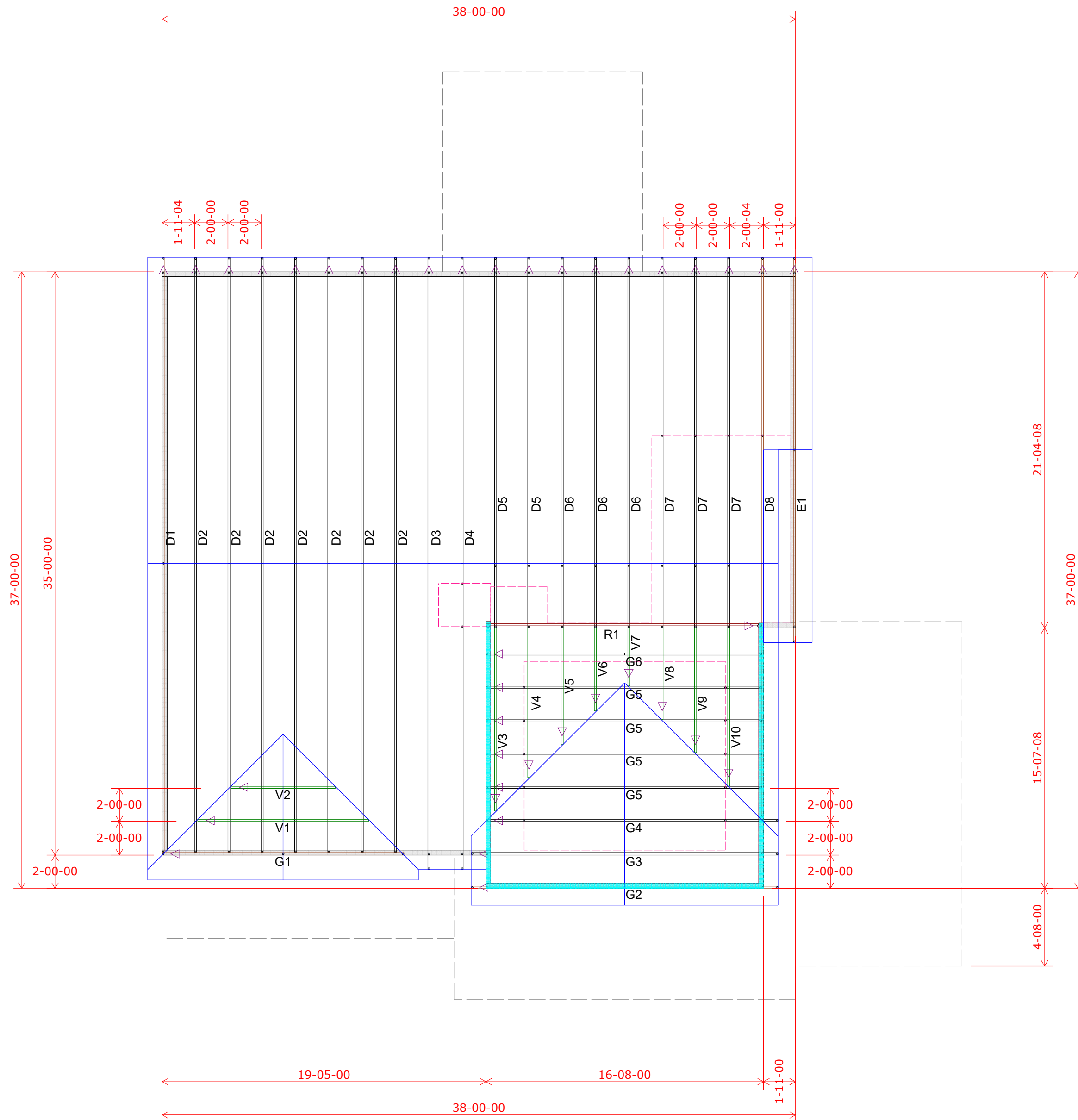
EVERSTEAD
SHOP DRAWING / SUBMITTAL
REVIEW

SUBMITTAL WAS REVIEWED FOR DESIGN CONFORMITY AND GENERAL CONFORMANCE TO CONTRACT DOCUMENTS ONLY. THE CONTRACTOR IS RESPONSIBLE FOR CONFIRMING AND CORRELATING DIMENSIONS AT JOBSITE FOR TOLERANCE, CLEARANCE, QUANTITIES, FABRICATION, COORDINATION OF HIS OR HER WORK WITH OTHER TRADES, AND FULL COMPLIANCE WITH CONTRACT DOCUMENTS.

STATUS:
APPROVED
05/09/2024

REVIEWED BY:
CPD
ENGINEER, EVERSTEAD ENGINEERING & DESIGN LLC.

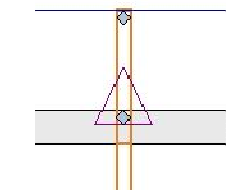




2nd Floor Truss Layout
Scale: 3/16" = 1'

| HANGER SCHEDULE | Quantity |
|-----------------|----------|
| ● LUS24 | 17 |
| ● LUS26 | 0 |
| ● HUS26 | 0 |
| ▲ HHUS26-2 | 0 |
| ▲ HGUS26-2 | 0 |
| ▲ HGUS28-3 | 0 |
| ■ LTHJA26 | 0 |
| ■ TJC37 | 0 |
| ■ TJC57 | 0 |
| ▲ HTS20 | 0 |
| ■ (2) H2.5A | |

Triangle denotes the left end of the Truss as it appears on the Engineered Drawings provided.



Unless otherwise specified by Engineer Of Record, Wheeler Lumber, LLC recommends an uplift connection at each bearing point per the following:

| # of Uplift | Connector |
|-------------|-----------|
| 0 - 495: | (1) H2.5A |
| 495 - 990: | (2) H2.5A |
| 990 - 1245: | (1) HTS20 |

Installation per Simpson Strong-Tie guidelines.

For Reactions greater than 1245#, refer to EOR.

Wall Heights:
1st Floor = 9-1-2 U.N.O.
2nd Floor = 8-1-2 U.N.O.

| Wall Heights | Color |
|--------------|-------------|
| 9-01-02 | Light Blue |
| 8-01-02 | Light Green |

| Customer | | Job Name | | Job Site Address | | City, State | | Designer | |
|----------------------------------------------------------------------------------------------------------------------------------------------------------------------------------------------------------------------------------------------------------------------------------------------------------------------|--|------------------------|--|-----------------------|--|-----------------------------------------------------------------------------------------------------------------------------------------------------------------------------------------------------------------------------------------------------------------------------------------------------------------------------------------------------------------------------------------------------------------------------------------------------------------------------------------------------------------------------------------------------------------------------------------------------------------------------------|--|------------------------------|--|
| Summit Homes | | Lot 182 Hawthorn Ridge | | 1617 SW Arborway Terr | | Lee's Summit MO | | Chuck Haspels (785) 746-4266 | |
| Job # B240091 | | Date: 4/29/2024 | | Shop Drawing Approval | | <small>THIS IS A TRUSS PLACEMENT DIAGRAM ONLY. These trusses are designed as individual building components to be incorporated into the building design at the specification of the building designer. See individual design sheets for each truss design identified on the placement drawing. The building designer is responsible for temporary and permanent bracing of the trusses. The building designer is responsible for providing the building designer with the general guidelines regarding bearing capacity of wood trusses available from the Truss Plate Institute, 583 Dornifino Drive, Madison, WI 53179.</small> | | | |
| <small>THIS LAYOUT IS THE SOLE SOURCE FOR FABRICATION OF TRUSSES AND VOIDS ALL PREVIOUS ARCHITECTURAL OR OTHER TRUSS LAYOUTS REVIEW AND APPROVAL OF THIS LAYOUT MUST BE RECEIVED BEFORE ANY TRUSSES WILL BE BUILT. VERIFY ALL CONDITIONS TO INSURE AGAINST CHANGES THAT WILL RESULT IN EXTRA CHARGES TO YOU.</small> | | | | | | | | | |

Wheeler Lumber
1959 Old Hwy 50 NE
Waverly, KS 66871

