



240 SW M 150 HWY  
LEE'S SUMMIT, MO 64081



**ENTERA**  
Your total branding solution



**LOCATION:**

City of Lee's Summit zoned CP-2  
816-969-1200 planner of the day is Dawn  
**Hector Soto, AICP** | Senior Planner220 SE Green Street | Lee's Summit, MO 64063816.969.1238 | [cityofLS.net](mailto:Hector.Soto@cityofls.net) | [Hector.Soto@cityofls.net](mailto:Hector.Soto@cityofls.net)

Hector wrote: They have not gone through any process to receive approval for signage in excess of what is allowed by right. An application (see attached) can be made to the Planning Commission to request consideration for approval of additional signage.

Pole signs prohibited

**WALL SIGNS:**

allowed 10% of each wall. 3 max per building. 6' letter height max.

**DIRECTIONALS:**

2 per driveway. 6 sq. ft. 2'-6" oah

**DRIVE THRU:**

No restrictions.

**MONUMENT:**

Count 1 side. 72 sq. ft./96 sq. ft. structure. 12' oah. Base does not count as face sq. ft. Setback up to property line. Sight visibility triangle is 25'.  
Monument sign base materials. The monument sign base shall have a masonry or concrete substructure with an exterior base consisting of durable masonry materials and include brick, split or scored concrete masonry units (CMU), natural or synthetic stone, or other architectural material(s) that, in the opinion of the Director, meet the intent of this section.  
Painted surfaces and wood shall not be used.  
Landscaping. A minimum of 25 square feet of landscaped area, exclusive of the sign structure, shall be located at the base of each principal freestanding sign. The landscaping shall contain living landscape materials consisting of shrubs, and/or perennial ground cover plants spaced throughout the required landscape area.

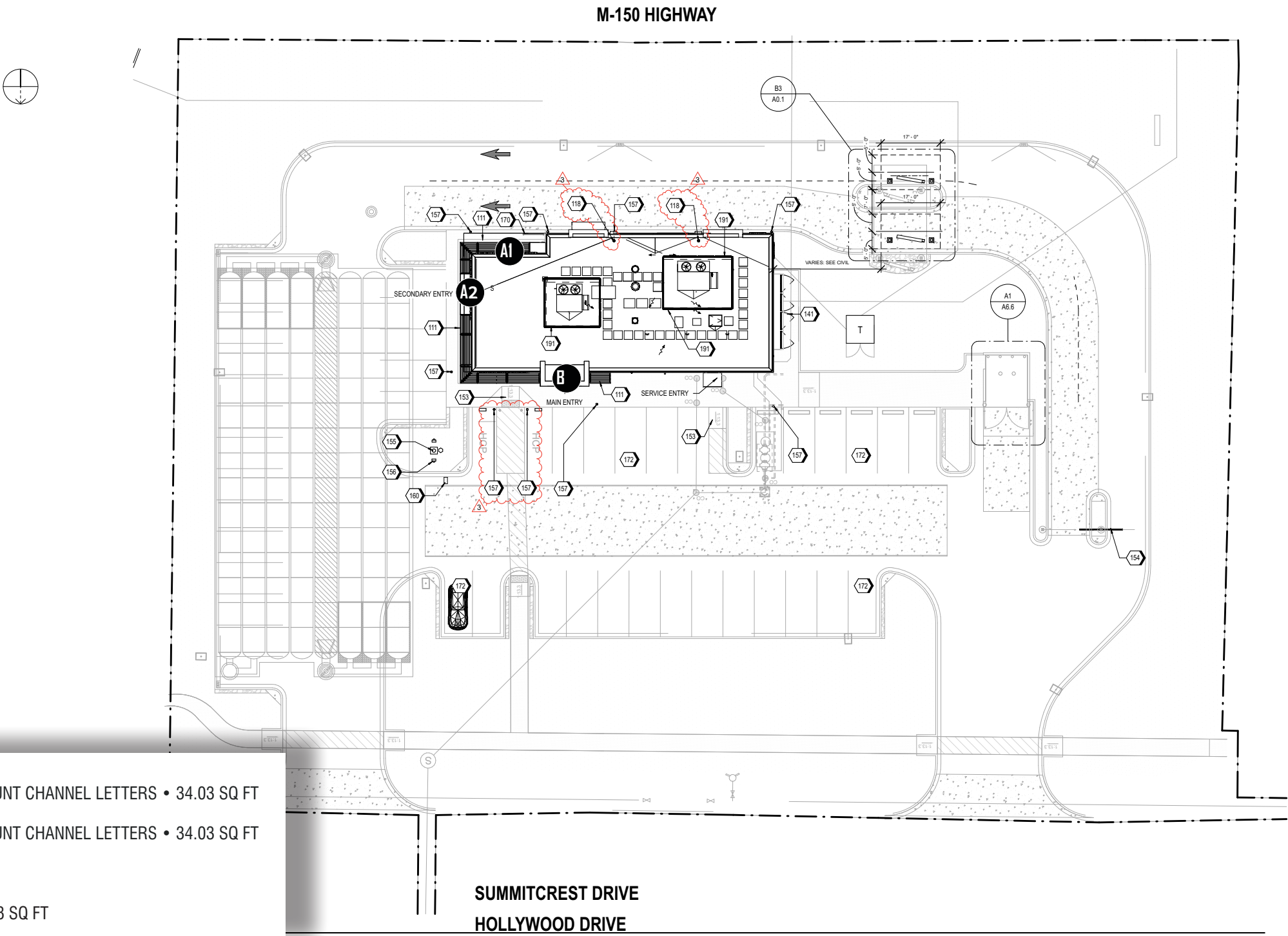
**PERMITTING:**

installer applies through the portal. The application has the LOA.

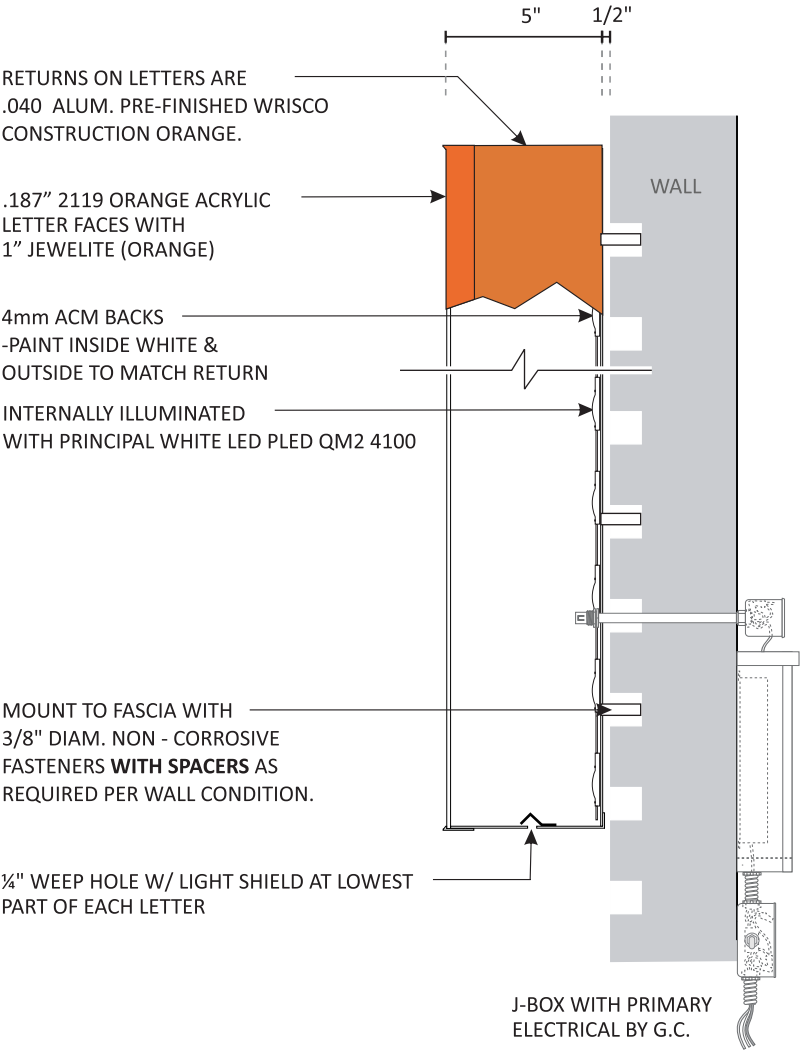
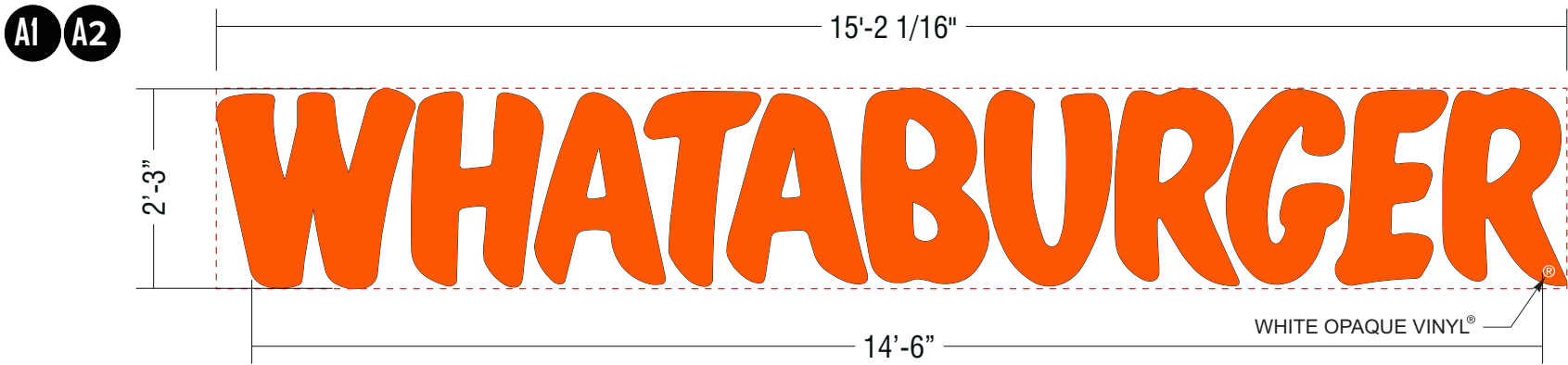
Sealed engineered drawings are only required for free-standing signs greater than 6' in height. This includes drive thru items.

Sort of a Variance:  
Additional signs: A Sign Application can be submitted for either a single sign or several signs that do not comply with Article 13 or are specified in Table 13-2 as signs that are allowed “as approved by the Commission.” A Sign Application shall be completed and submitted to the Development Services Department, with filing fee, made payable to the City of Lee's Summit. An application may be withdrawn at any time upon written request. However, no refund will be made if the application is withdrawn after Planning Commission packets have been distributed.

Every Sign Application is reviewed by the Planning Commission, which meets on the second and fourth Tuesdays of each month in the City Council Chambers of City Hall at [220 SE Green Street](#). For each item on the agenda, the applicant will be given an opportunity to make their own presentation, which should be a brief description of the proposed project and include responses to any concerns raised in the City staff's report. Presentations before the Planning Commission shall be (1) in electronic format or (2) reduced drawings for use on the Document Camera to display on the screen. Electronic presentations shall be on a laptop, CD ROM, DVD, or flash drive. The City's presentation system can support Word, Excel, Power Point, Adobe, Windows Media Player and Internet Explorer applications. Presentation boards will no longer be allowed. If the staff recommendation is for approval of the sign application, the item may be placed on the Consent Agenda, and no presentation will be necessary.

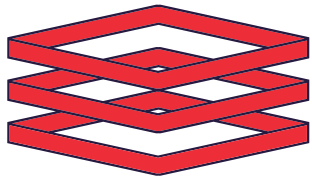


240 SW M 150 HWY  
LEE'S SUMMIT, MO 64081



LETTER SECTION

N.T.S.



**ENTERA**

Your total branding solution

5900 VENTURE CROSSINGS BLVD

PANAMA CITY, FL 32409

PH: 850-763-7982

FAX: 850-392-0673

[www.enterabranding.com](http://www.enterabranding.com)

THIS DOCUMENT CONTAINS PROPRIETARY AND  
CONFIDENTIAL INFORMATION OF ENTERA, LLC. AND  
SHALL NOT BE USED, DISCLOSED OR REPRODUCED,  
IN WHOLE OR IN PART, FOR ANY PURPOSE OTHER  
THAN TO EVALUATE THIS DOCUMENT, WITHOUT THE  
PRIOR WRITTEN CONSENT OF ENTERA, LLC. TITLE IN  
AND TO THIS DOCUMENT AND ALL INFORMATION  
CONTAINED HEREIN REMAINS AT ALL TIMES  
PROPERTY OF ENTERA, LLC.

COLOR NOTES

REVISION

1.	05.17.24.DT
2.	XXXXX
3.	XXXXX
4.	XXXXX

ARTIST

DT

CLIENT

WHATABURGER

SCALE

1/2" = 1'-0"

DATE

04.26.24

LOCATION

240 SW M 150 HWY  
LEE'S SUMMIT, MO 64081

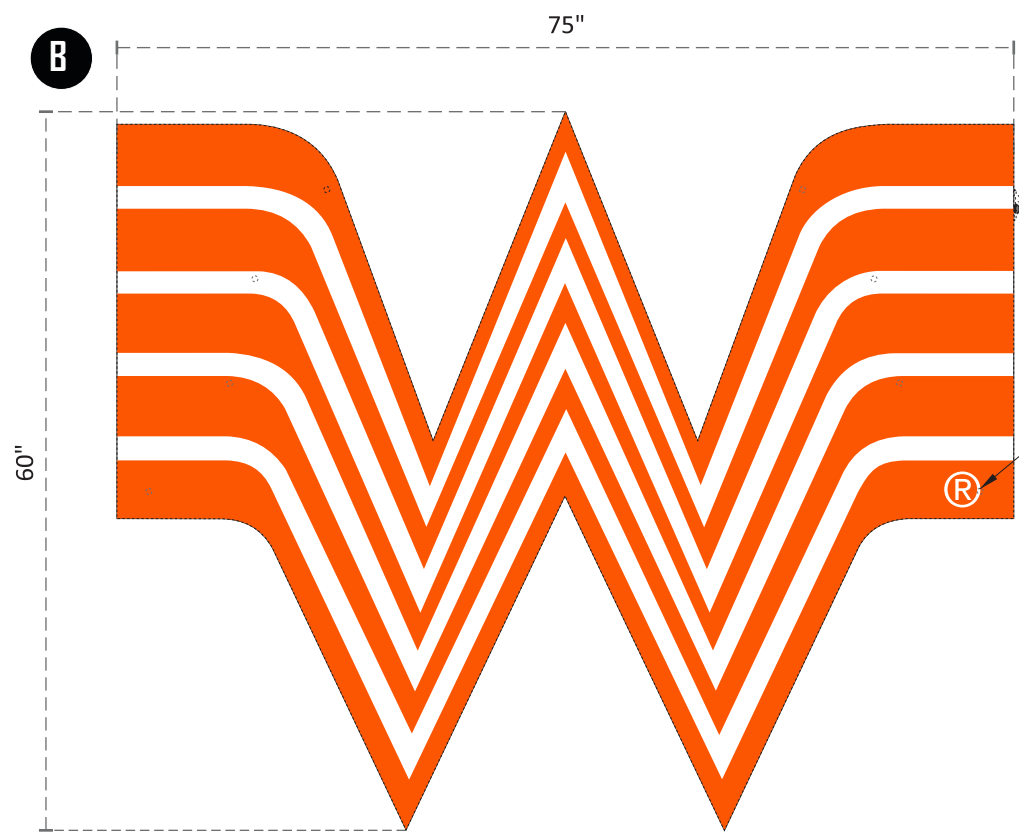
H: MARKETING DESIGN / CDR / W / WHATABURGER / LEE'S SUMMIT, MO, 240 SW M 150 .cdr



Underwriters  
Laboratories Inc.®  
LISTED

DEPARTMENT  
ART





(8) MOUNTING HOLES.  
PAINT BOLTS TO  
MATCH ORANGE.  
MIN. QTY SHOWN,  
INSTALLER CAN ADD  
MORE.

L.E.D. CHANNEL LETTER MOUNTING DETAIL (EXTERIOR)

- A. 3" ALUMINUM RETURNS TO BE PAINTED  
413D6 WHATABURGER ORANGE

B. 1" JEWELITE MATCH 413D6 WHATABURGER ORANGE

C. .090 ALUMINUM BACK (WHITE INSIDE)

D. .150" WHITE POLYCARBONATE w/ 3M 3630-44 ORANGE VINYL

E. 12V PRINCIPAL QWIK MOD2 7100K LEDs

F. POWER CABLE STARTING FROM POWER  
SUPPLY THEN LETTER TO LETTER (BEHIND FASCIA)

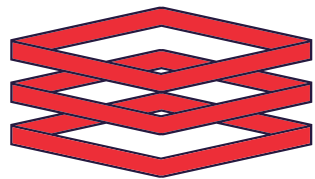
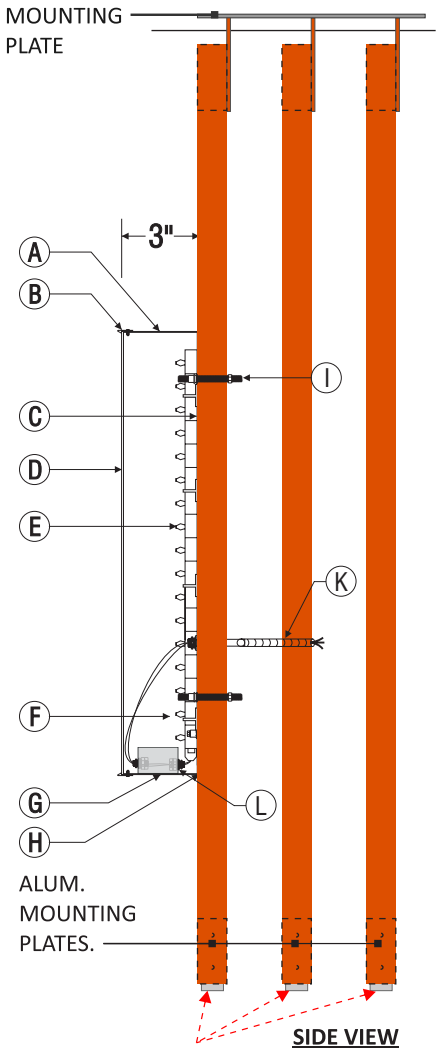
G. 1/4" WEEP HOLES AS REQUIRED (FOR  
EXTERIOR INSTALLATION ONLY)
- H. SILICONE BEAD AROUND THE INSIDE OF RETURN  
AND BACK TO SEAL FROM WATER LEAKAGE

I. 3/8" BOLTS THRU FRAME

J. 3/8" RIV NUTS

K. 1/2" SEALTITE CONDUIT RUNNING TO  
SECONDARY CONNECTION  
\* NOTE: GENERAL CONTRACTOR TO HAVE  
PRIMARY CONNECTION HOOKED UP

L. STANDARD POWER SUPPLY HOUSED  
REMOTE LOCATION



**ENTERA**

Your total branding solution

5900 VENTURE CROSSINGS BLVD

PANAMA CITY, FL 32409

PH: 850-763-7982

FAX: 850-392-0673

www.enterabranding.com

THIS DOCUMENT CONTAINS PROPRIETARY AND  
CONFIDENTIAL INFORMATION OF ENTERA, LLC. AND  
SHALL NOT BE USED, DISCLOSED OR REPRODUCED,  
IN WHOLE OR IN PART, FOR ANY PURPOSE OTHER  
THAN TO EVALUATE THIS DOCUMENT, WITHOUT THE  
PRIOR WRITTEN CONSENT OF ENTERA, LLC. TITLE IN  
AND TO THIS DOCUMENT AND ALL INFORMATION  
CONTAINED HEREIN REMAINS AT ALL TIMES  
PROPERTY OF ENTERA, LLC.

COLOR NOTES

REVISION

1.	05.17.24.DT
2.	XXXXX
3.	XXXXX
4.	XXXXX

ARTIST

DT

CLIENT

WHATABURGER

SCALE

3/4" = 1'-0"

DATE

04.26.24

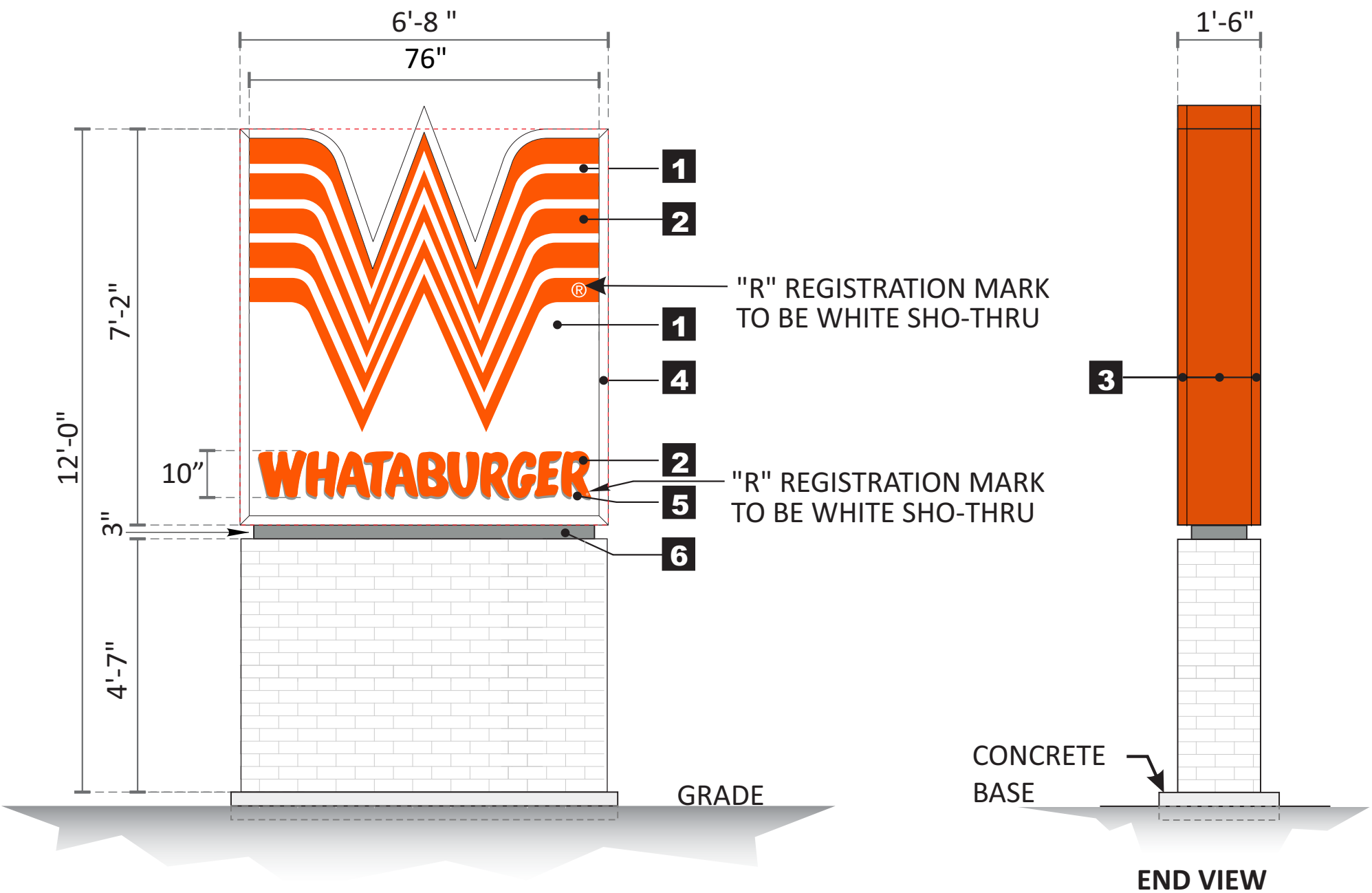
LOCATION

240 SW M 150 HWY  
LEE'S SUMMIT, MO 64081

H: MARKETING DESIGN / CDR / W / WHATABURGER / LEE'S SUMMIT, MO 240 SW M 150.cdr



DEPARTMENT  
ART

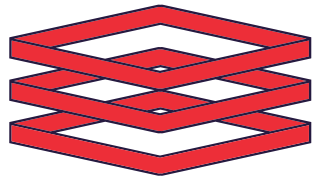


ALLOWABLE SQUARE FOOTAGE:	72.00
PROPOSED SQUARE FOOTAGE:	47.78
SQUARE FEET REMAINING AFTER PROPOSED:	24.22

**SIGN DETAIL:**

CABINET: D/F .063" ALUMINUM CABINET w/ FLEX FACES & FIRST SURFACE VINYL GRAPHICS  
ILLUMINATED: WHITE LEDs  
COLORS: SEE CALL OUT  
CABINET: .063" ALUMINUM  
RETAINER: 2"  
BASE: BRICK BASE & FOUNDATION BY OTHERS  
QTY: 1

COLOR SCHEDULE	
1	3M OPAQUE WHITE FLEX FACES
2	3M 3630-44 ORANGE VINYL
3	P.T.M. P.M.S. 1665C ORANGE.
4	SPRAYLAT MARK 1: SM-102S SATIN WHITE
5	3M 3630-51 SILVER GRAY VINYL
6	P.T.M. P.M.S. 430 GRAY



**ENTERA**  
Your total branding solution

5900 VENTURE CROSSINGS BLVD  
PANAMA CITY, FL 32409  
PH: 850-763-7982  
FAX: 850-392-0673  
www.enterabrading.com

THIS DOCUMENT CONTAINS PROPRIETARY AND CONFIDENTIAL INFORMATION OF ENTERA, LLC. AND SHALL NOT BE USED, DISCLOSED OR REPRODUCED, IN WHOLE OR IN PART, FOR ANY PURPOSE OTHER THAN TO EVALUATE THIS DOCUMENT, WITHOUT THE PRIOR WRITTEN CONSENT OF ENTERA, LLC. TITLE IN AND TO THIS DOCUMENT AND ALL INFORMATION CONTAINED HEREIN REMAINS AT ALL TIMES PROPERTY OF ENTERA, LLC.

**COLOR NOTES**

REVISION	
1.	05.17.24.DT
2.	XXXXX
3.	XXXXX
4.	XXXXX

**ARTIST**  
DT


**CLIENT**  
WHATABURGER

**SCALE**  
3/8" = 1'-0"

**DATE**  
04.26.24

**LOCATION**  
240 SW M 150 HWY  
LEE'S SUMMIT, MO 64081

H: MARKETING DESIGN / CDR / W / WHATABURGER / LEE'S SUMMIT, MO 240 SW M 150 .cdr



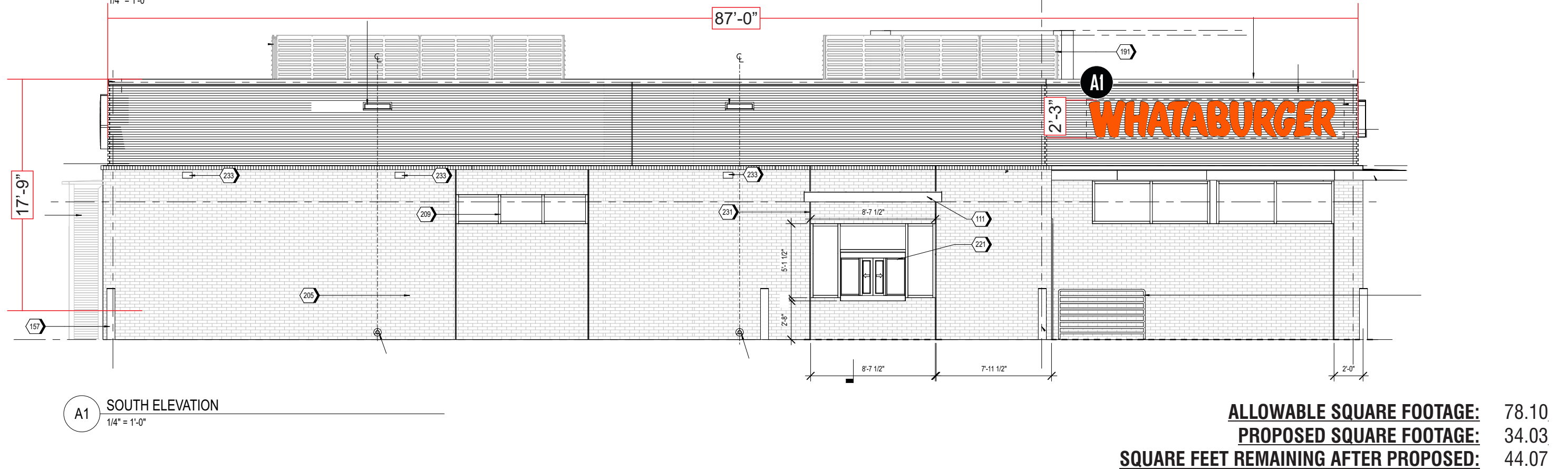
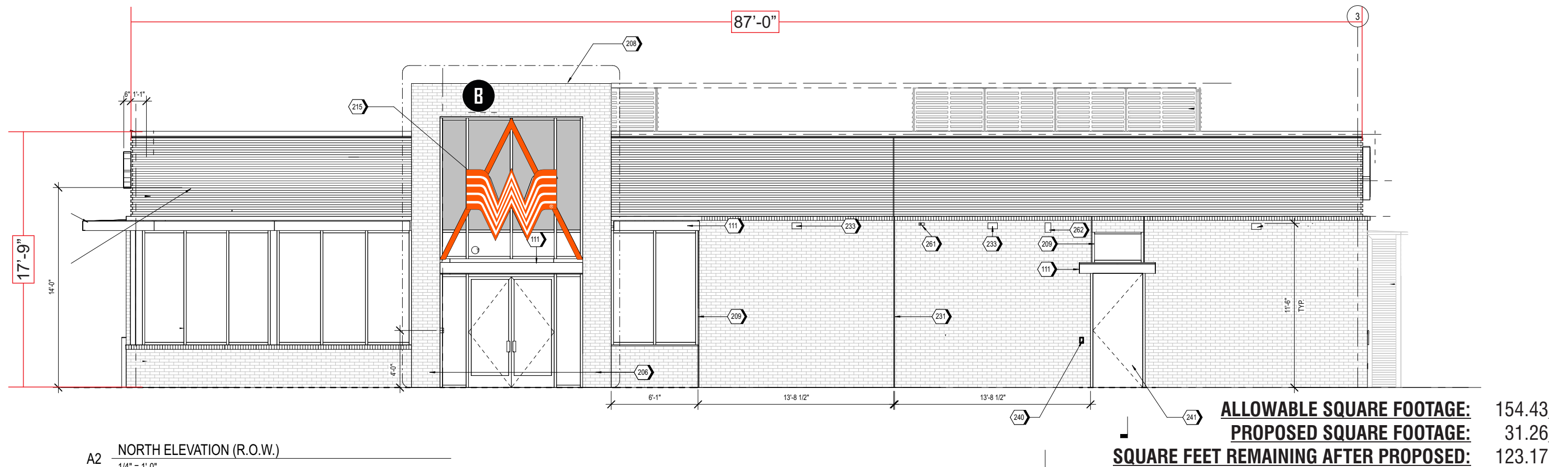
**Underwriters Laboratories Inc.**  
LISTED

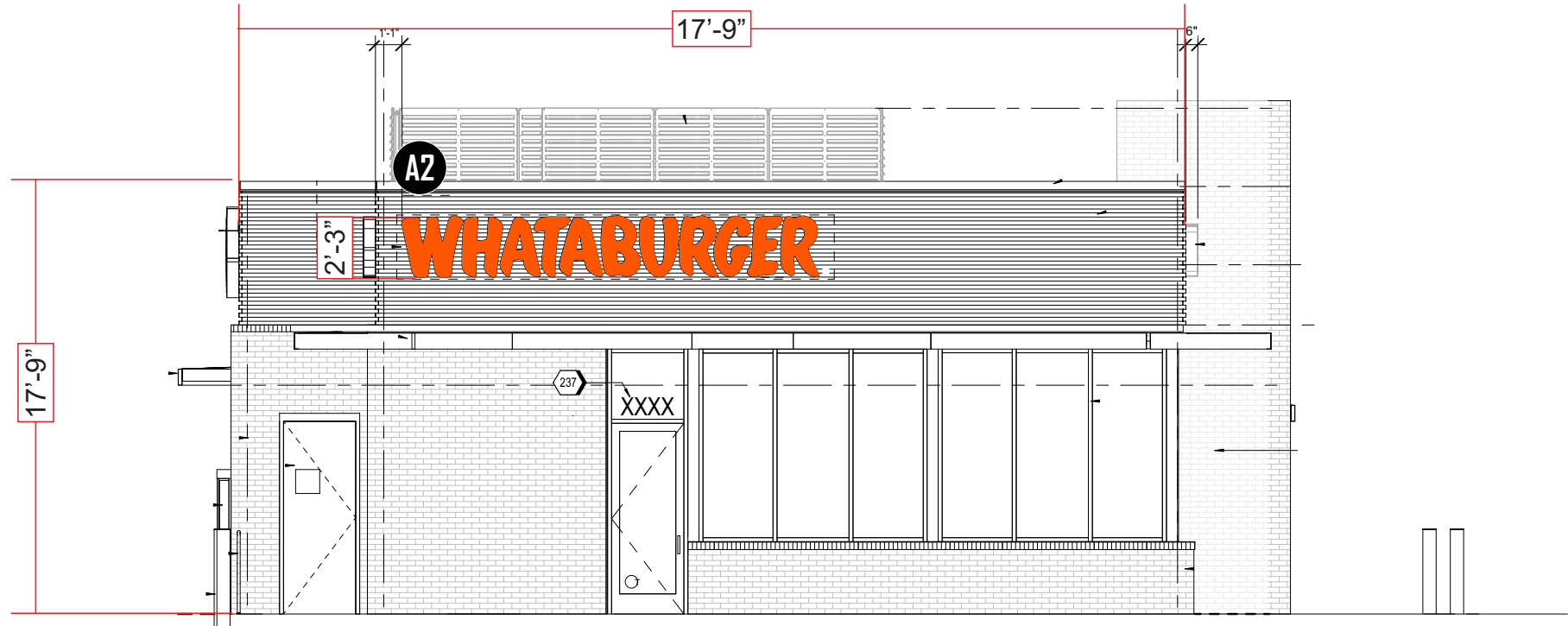
DEPARTMENT: ART



# NORTH ELEVATION & SOUTH • PROPOSED SIGNAGE

SCALE: 1/8" = 1'-0"





A1 EAST ELEVATION (R.O.W)  
1/4" = 1'-0"

ALLOWABLE SQUARE FOOTAGE:	78.10
PROPOSED SQUARE FOOTAGE:	34.03
SQUARE FEET REMAINING AFTER PROPOSED:	44.07