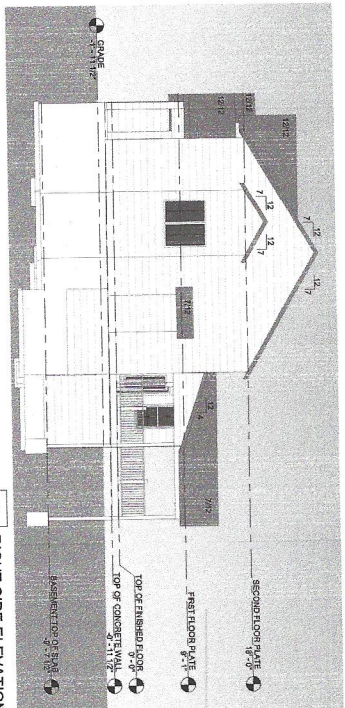
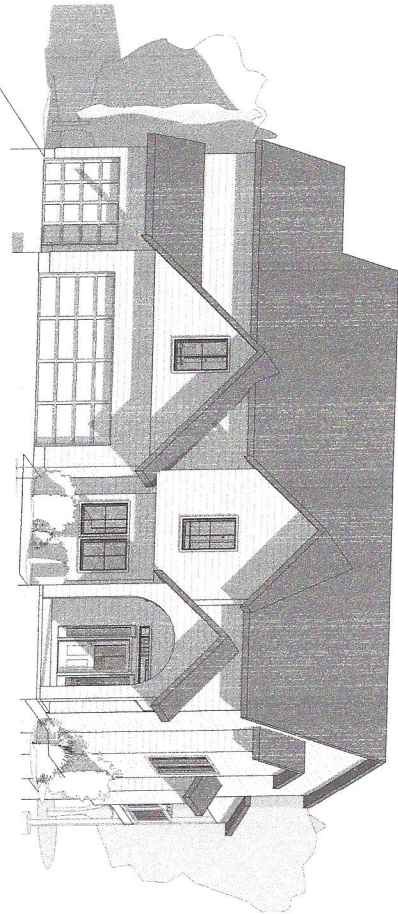


4 LEFT SIDE ELEVATION  
SCALE: 1/8" = 1'-0"



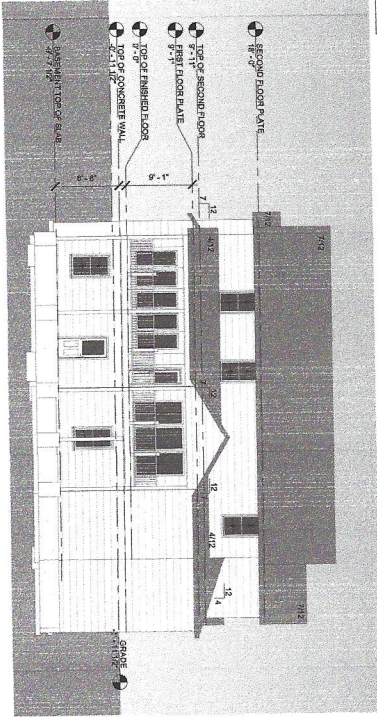
3 RIGHT SIDE ELEVATION  
SCALE: 1/8" = 1'-0"



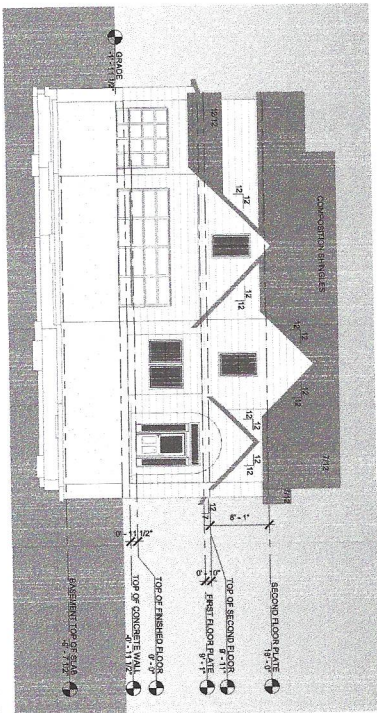
# THE LEXINGTON II 5 BEDROOMS

SHEET INDEX	
Sheet	Sheet Name
A100	COVER SHEET
S100	FOUNDATION PLAN
S101	FIRST FLOOR FRAMING PLAN
S102	SECOND FLOOR FRAMING PLAN
S103	ROOF FRAMING PLAN
S500	GENERAL NOTES
S501	DETAILS
S502	DETAILS
S503	DETAILS
S504	DETAILS
S505	DETAILS
S506	DETAILS
SQUARE FOOTAGES	
Name	Area
FIRST FLOOR	1711 SF
SECOND FLOOR	1820 SF
GRAND TOTAL	3531 SF
UNFINISHED BASEMENT	1285 SF
	4816 SF

2 REAR ELEVATION  
SCALE: 1/8" = 1'-0"



1 FRONT ELEVATION  
SCALE: 1/8" = 1'-0"



PROJECT INFORMATION  
THE LEXINGTON II - 5 BEDROOMS W/ WALKOUT  
2405 SW River Trail Road  
Lee's Summit, MO 64082

**Norton & Schmidt**  
Consulting Engineers, L.L.C.  
311 East 11th Avenue  
North Kansas City, MO 64116  
Phone: (816) 421-4232  
Fax: (816) 421-1956  
www.nortonschmidt.com

NLS JOB NUMBER: 2022-2362  
© 2020 Norton & Schmidt Consulting Engineers

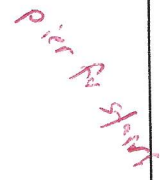
ISSUES & REVISIONS	
#	DATE DESCRIPTION
1	ISSUED FOR PERMIT

DRAWN BY: MLR  
CHECKED BY: BSS  
ISSUED FOR:

SHEET TITLE  
COVER SHEET

SHEET NUMBER  
A100



[illegible]

## Lee's Summit, MO 64086

NLS JOB NUMBER: 2022-2362

1	11/26/2022	PERU
---	------------	------

1	11/26/2022	PERU
---	------------	------

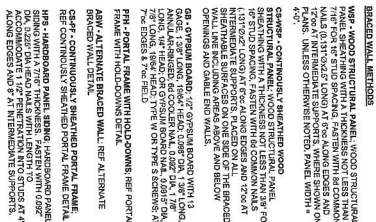
CHECKED BY: BSS

Page 1 of 1

COMUNICAZIONE DI ANI

— 100 —

\$100



**Consulting Engineers, L.L.C.**  
311 East 11th Avenue  
North Kansas City, MO  
64118  
Phone: (816) 421-4232  
Fax: (816) 421-1956  
[www.norlionschmidt.com](http://www.norlionschmidt.com)

N&S JOB NUMBER: 2022-236

ISSUES & REVISIONS		
#	DATE	DESCRIPTION
1	11/14/2022	PERMIT

[illegible]

DRAWN BY: MLT  
CHECKED BY: BSS  
ISSUED FOR:

SHEET TITLE
FIRST FLOOR FRAMING PLAN

**SHEET NUMBER**

S101

PROJECT INFORMATION

THE LEXINGTON II - 5 BEDROOMS W/ WALKOUT

2405 SW River Trail Road  
Lee's Summit, MO 64082





1003

---

CHECKED BY: **BS**

SHEET TITLE

## FRAMING PLAN

SHEET NUMBER

2010

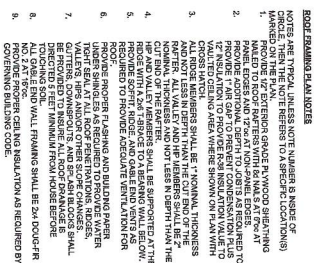
THE LEXINGTON II - 5 BEDROOMS W/ WALKOUT

2405 SW River Trail Road  
Lee's Summit, MO 64082

**Consulting Engineers, L.L.C.**  
311 East 11th Avenue  
North Kansas City, MO  
64116  
Phone: (816) 421-4232  
Fax: (816) 421-1956  
[www.nortonshmidt.com](http://www.nortonshmidt.com)

N&S JOB NUMBER: 2022-2362  
© 2020 Norton & Schmidt Consulting Engineers





**NOTE:**

- RAFTERS TO BE 2x6 D.F.L. No. 2 AT 16" O.C. U.N.O.
- HIP, VALLEY, AND RIDGE MEMBERS SHALL BE (1) 2x8 D.F.L. No. 2 U.N.O.
- REF. 12IS303 FOR PURLING BRACING

#	DATE	DESCRIPTION
1	11/4/2022	PERMIT

DRAWN BY: MLT  
CHECKED BY: BSA  
ISSUED FOR:

[illegible]

THE LEXINGTON II - 5 BEDROOMS W/ WALKOUT

2405 SW River Trail Road  
Lee's Summit, MO 64082

Norton &amp; Schmidt



**Consulting Engineers, L.L.C.**  
311 East 11th Avenue  
North Kansas City, MO  
64116  
Phone: (816) 421-4232  
Fax: (816) 421-1956  
[www.nortonschmidt.com](http://www.nortonschmidt.com)

N&S JOB NUMBER: 2022-2362  
© 2020 Norton & Schmidt Consulting Engineers

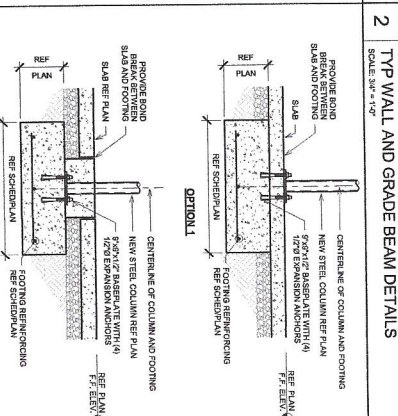
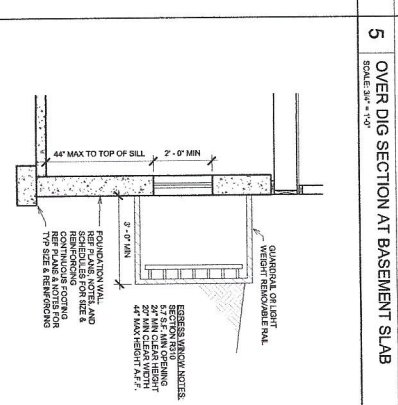
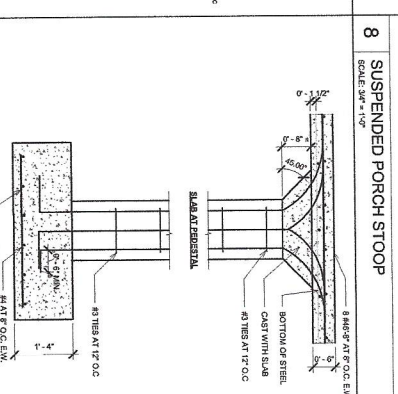
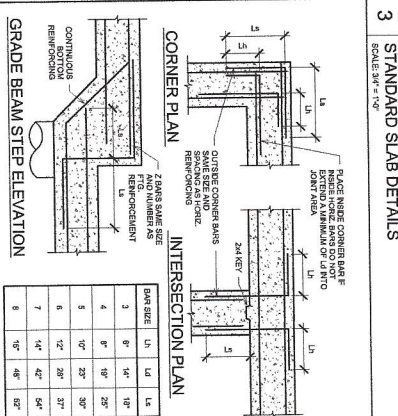
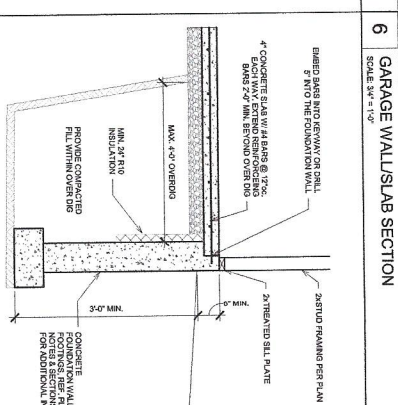
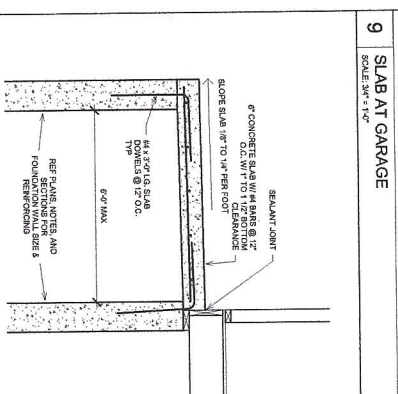
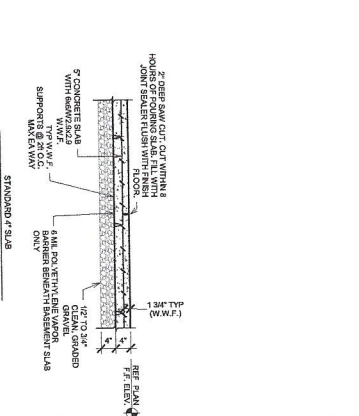
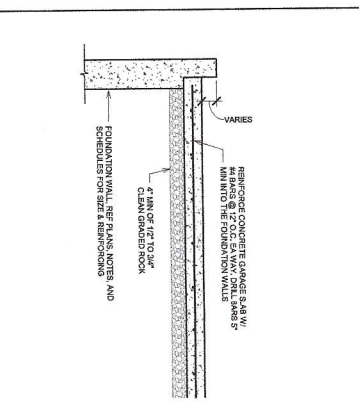
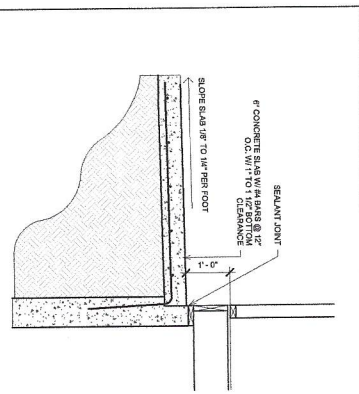
SHEET NUMBER

S103









10 TYPICAL SUSPENDED SLAB  
SCALE: 3/4" = 1'-0"

7 PEDESTAL AT GARAGE SLAB ON FILL  
SCALE: 3/4" = 1'-0"

4 TYP EGRESS WINDOW SECTION  
SCALE: 1/2" = 1'-0"

1 TYP COLUMN FOOTING  
SCALE: 3/4" = 1'-0"

**Norton & Schmidt**  
Consulting Engineers, L.L.C.  
311 East 11th Avenue  
North Kansas City, MO 64116  
Phone: (816) 421-4232  
Fax: (816) 421-1569  
www.nortonschmidt.com

NSS JOB NUMBER: 2022-2362  
© 2020 Norton & Schmidt Consulting Engineers

**PROJECT INFORMATION**  
THE LEXINGTON II - 5 BEDROOMS W/ WALKOUT  
2405 SW River Trail Road  
Lee's Summit, MO 64082

**ISSUES & REVISIONS**

#	DATE	DESCRIPTION
1	11/02/22	ISSUED FOR PERMIT

**SHEET TITLE**  
DETAILS

**SHEET NUMBER**  
S501

**DRAWN BY:** M.R.  
**CHECKED BY:** B.S.  
**ISSUED FOR:**



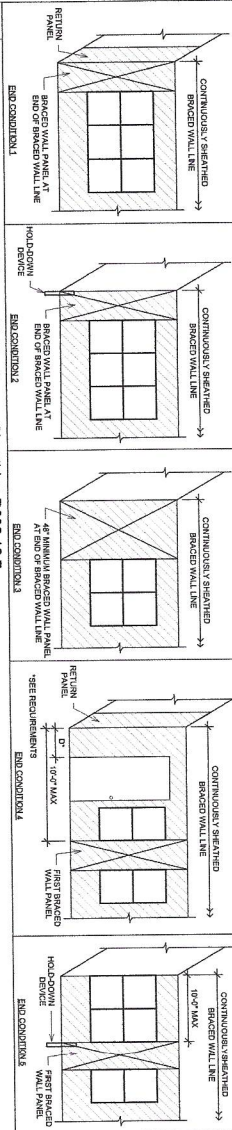
**REQUIREMENTS**

**RETURN PANEL:**  
2" FOR RAISED WALL LINES SHEATHED WITH WOOD  
3" FOR RAISED WALL LINES SHEATHED WITH GYP-  
SOL  
3" FOR RAISED WALL LINES SHEATHED WITH  
STRUCTURAL FIBERBOARD

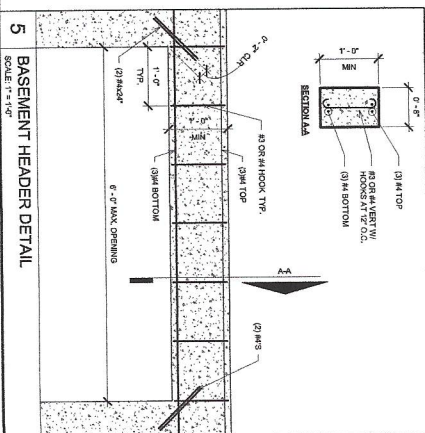
**DISTANCE D:**

**RETURN PANEL:**  
2" FOR RAISED WALL LINES SHEATHED WITH WOOD  
STRUCTURAL PANELS  
3" FOR RAISED WALL LINES SHEATHED WITH  
STRUCTURAL FIBERBOARD

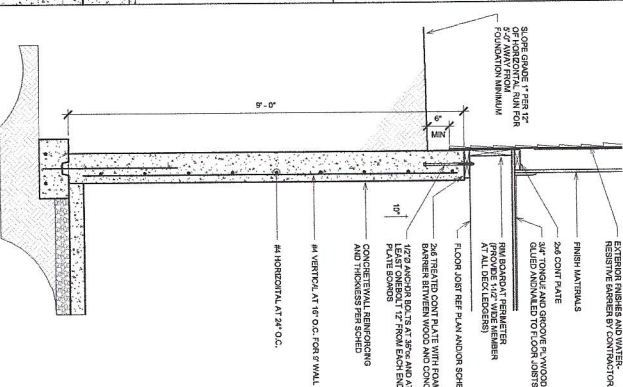
**HOLD-DOWN DEVICE:**  
MUST BE CAPABLE FASTENED TO THE EDGE OF THE  
WOOD OR CONCRETE AND TO THE  
FOUNDATION OR FLOOR FRAMING BELOW.



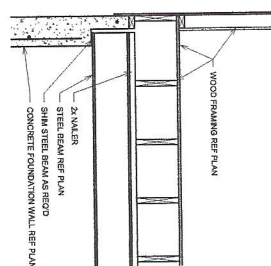
**6** End Conditions for Braced Wall Lines with Continuous Sheathing R602.10.7  
SCALE: 1/4" = 1'-0"



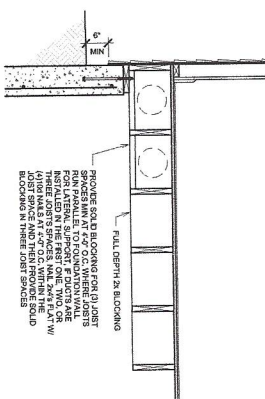
**5 BASEMENT HEADER DETAIL**  
SCALE: 1" = 1'-0"



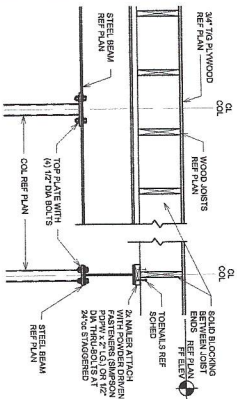
4 FULL HEIGHT BASEMENT WALL SECTION  
SCALE: 3/4" = 1'-0"



3 STL BEAM ON CONC FOUND WALL  
SCALE 3/4" = 1'-0"



2  
JOISTS PARALLEL TO WALL  
SCALE 3/4" = 1'-0"



1  
Typ Beam at Column  
SCALE: 3/4" = 1'-0"

#	DATE	DESCRIPTION
1	11/4/2022	PERMIT

PROJECT INFORMATION

THE LEXINGTON II - 5 BEDROOMS W/ WALKOUT

2405 SW River Trail Road  
Lee's Summit, MO 64082

Norton &amp; Schmidt



**Consulting Engineers, L.L.C.**  
311 East 11th Avenue  
North Kansas City, MO  
64116  
Phone: (816) 421-4232  
Fax: (816) 421-1956  
[www.norionschmidt.com](http://www.norionschmidt.com)

N&S JOB NUMBER: 2022-2362  
© 2020 Norton & Schmidt Consulting Engineers

DRAWN BY: MILL  
CHECKED BY: BS

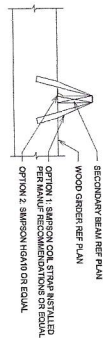
ISSUED FOR:

SHEET TITLE	DETAILS
-------------	---------

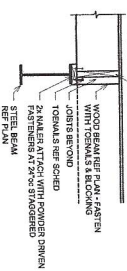
**SHEET NUMBER**

S502

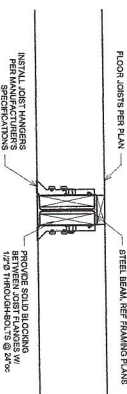




3 TYP WOOD BEAM PERP TO WOOD BEAM  
SCALE: 3/4" = 1'-0"



2 WOOD BEAM OVER STEEL BEAM



1 UPSET STEEL BEAM  
SCALE: 3/4" = 1'-0"



**CONNECTIONS** [əˈb, c, d, e, f, g]

		GROUND SNOW LOAD (PSF)															
		30				50				70							
		ROOF SPAN (FEET)															
	12	20	28	36	12	20	28	36	12	20	28	36	12	20	28	36	
REQUIRED NUMBER OF THE COMMON NAIL(S) PER FEET L IN SPICES (GRADE)	1	2	3	4	1	2	3	4	1	2	3	4	1	2	3	4	5
1	7	14	19	21	6	10	13	16	20	24	28	30	26	30	34	36	38
2	6	11	15	17	5	8	11	12	16	19	21	22	18	20	22	24	26
3	5	9	12	14	4	6	8	9	11	13	15	16	14	16	18	20	22
4	4	7	10	11	3	5	6	7	9	10	11	12	10	12	14	16	18
5	4	6	9	10	3	4	5	6	7	8	9	10	8	9	11	13	15
6	4	6	8	9	3	4	5	6	7	8	9	10	8	9	11	13	15
7	4	5	7	8	3	4	5	6	7	8	9	10	8	9	11	13	15
8	4	5	6	7	3	4	5	6	7	8	9	10	8	9	11	13	15
9	4	4	5	6	3	4	5	6	7	8	9	10	8	9	11	13	15
10	4	4	4	5	3	4	5	6	7	8	9	10	8	9	11	13	15
11	4	4	4	5	3	4	5	6	7	8	9	10	8	9	11	13	15
12	4	4	4	5	3	4	5	6	7	8	9	10	8	9	11	13	15
13	4	4	4	5	3	4	5	6	7	8	9	10	8	9	11	13	15
14	4	4	4	5	3	4	5	6	7	8	9	10	8	9	11	13	15
15	4	4	4	5	3	4	5	6	7	8	9	10	8	9	11	13	15
16	4	4	4	5	3	4	5	6	7	8	9	10	8	9	11	13	15
17	4	4	4	5	3	4	5	6	7	8	9	10	8	9	11	13	15
18	4	4	4	5	3	4	5	6	7	8	9	10	8	9	11	13	15
19	4	4	4	5	3	4	5	6	7	8	9	10	8	9	11	13	15
20	4	4	4	5	3	4	5	6	7	8	9	10	8	9	11	13	15
21	4	4	4	5	3	4	5	6	7	8	9	10	8	9	11	13	15
22	4	4	4	5	3	4	5	6	7	8	9	10	8	9	11	13	15
23	4	4	4	5	3	4	5	6	7	8	9	10	8	9	11	13	15
24	4	4	4	5	3	4	5	6	7	8	9	10	8	9	11	13	15
25	4	4	4	5	3	4	5	6	7	8	9	10	8	9	11	13	15
26	4	4	4	5	3	4	5	6	7	8	9	10	8	9	11	13	15
27	4	4	4	5	3	4	5	6	7	8	9	10	8	9	11	13	15
28	4	4	4	5	3	4	5	6	7	8	9	10	8	9	11	13	15
29	4	4	4	5	3	4	5	6	7	8	9	10	8	9	11	13	15
30	4	4	4	5	3	4	5	6	7	8	9	10	8	9	11	13	15

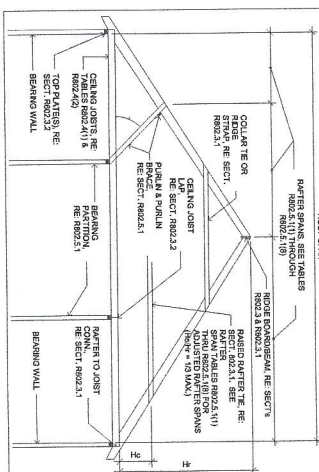
[illegible]

Hc/Hr	HEEL JOINT CONNECTION ADJUSTMENT FACTOR
1/3	1.5
1/4	1.33
1/5	1.25
1/6	1.2
1/10 OR LESS	1.11

WHERE:  
HC= HEIGHT OF CEILING JOISTS OR RAFTER TIES MEASURED VERTICALLY ABOVE THE TOP OF THE RAFTER SUPPORT WALLS.  
H=HEIGHT OF ROOF RIDGE MEASURED VERTICALLY ABOVE THE TOP OF THE RAFTER SUPPORT WALLS.

## ROOT-KATIEK SCHEDULE

GRADE	MEASUREMENT	MAX SPAN IN 10% CHARGE	MAX SPAN IN 10% CHARGE	MAX SPAN IN 10% CHARGE	MAX SPAN IN 10% CHARGE
22 FLYS	2.64 / 10.95	14.4"	12.6"	11.4"	10.2"
22 FLYS	2.64 / 10.95	19.2"	16.4"	15.0"	13.2"
22 FLYS	2.64 / 10.95	22.0"	20.0"	18.0"	16.0"
22 FLYS	2.64 / 10.95	25.0"	23.2"	21.4"	19.6"



## NAILING SCHEDULE

[illegible]

## MAILING SCHEDULE

Description of Building Elements	Form (Continued)	Member & Type of Fastener (kilo-Newtons)	Spacing of Fasteners
Bridging girders and beams, 2-axis timber types		{64} (2, 1.285)	Nails 40 mm in diameter, staggered 100 mm at ends and at 600 mm
Larger steel supporting joist or column		3 • {164} (2, 0.1397)	At each end or center
Description of Building Materials	Description of Fastener (kilo-Newtons)	Spacing of Fasteners	Dimension (spacing) (kilo-Newtons)
Wood structural members	Wood structural members, nail and nail fastening to beams and girders	Figures (1)	
Steel structural members	Steel structural members, bolt and bolt fastening to beams and girders	Figures (1)	
Steel structural members	Steel structural members, bolt and bolt fastening to beams and girders	Figures (1)	
Steel structural members	Steel structural members, bolt and bolt fastening to beams and girders	Figures (1)	
Steel structural members	Steel structural members, bolt and bolt fastening to beams and girders	Figures (1)	
Steel structural members	Steel structural members, bolt and bolt fastening to beams and girders	Figures (1)	
Steel structural members	Steel structural members, bolt and bolt fastening to beams and girders	Figures (1)	
Steel structural members	Steel structural members, bolt and bolt fastening to beams and girders	Figures (1)	
Steel structural members	Steel structural members, bolt and bolt fastening to beams and girders	Figures (1)	
Steel structural members	Steel structural members, bolt and bolt fastening to beams and girders	Figures (1)	
Steel structural members	Steel structural members, bolt and bolt fastening to beams and girders	Figures (1)	
Steel structural members	Steel structural members, bolt and bolt fastening to beams and girders	Figures (1)	
Steel structural members	Steel structural members, bolt and bolt fastening to beams and girders	Figures (1)	

## PROJECT INFORMATION

**THE LEXINGTON II - 5 BEDROOMS W/ WALKOUT**

2405 SW River Trail Road  
Lee's Summit, MO 64082

## DISCUSSION & REVISIONS

DATE	DESCRIPTION
2022	PERMIT

HEET TITLE

DRAWN BY: ML8

CHECKED BY: BS

ISSUED FOR:

## DETAILS

## EET NUMBER

S504

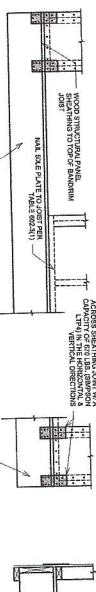
**Norton & Schmidt**



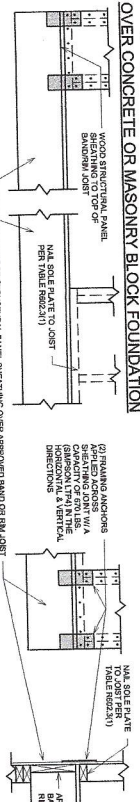
**Consulting Engineers, L.L.C.**  
311 East 11th Avenue  
North Kansas City, MO  
64116  
Phone: (816) 421-4232  
Fax: (816) 421-1956  
[www.norionischmidt.com](http://www.norionischmidt.com)

N&S JOB NUMBER: 2022-2362  
© 2020 Norton & Schmidt Consulting Engineers





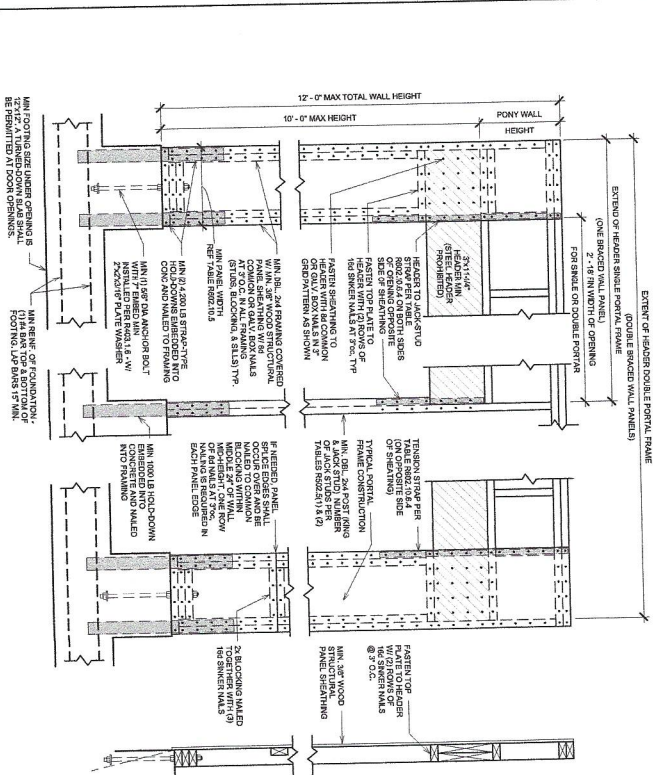
SCALE: 3/4" = 1'-0"



Technical drawing of a roof assembly cross-section. The drawing shows a sloped roof structure with the following components and labels:

- WOOD STRUCTURAL PANEL OVER HANDED JOIST**: Points to the upper structural panel.
- WOOD STRUCTURAL PANEL BEARING OVER APPROVED DADO ON RAIL JOIST**: Points to the lower structural panel.
- WOOD STRUCTURAL PANEL, MIN. 1 1/2" OVER HANDED JOIST**: Points to the topmost panel layer.
- MA. SOLE PLATE TO JOIST PER TABLE (R602.23)**: Points to the horizontal plate connecting the panels to the joist.
- ATTACH BEARING TO JOIST WITH 6 COMPRESSION NAILS PER JOIST (R602.23)**: Points to the nails securing the panel to the joist.
- NO. 5 DOWEL BOLT PER TABLE (R602.23)**: Points to the vertical bolt passing through the assembly.
- APPROVED RAIL JOIST**: Points to the horizontal support member.
- WOOD JOIST**: Points to the structural member below the rail joist.
- 9 IN. OVERLAP**: Dimension indicating the overlap of the panels.

SCALE: 1" = 1'-0"



—

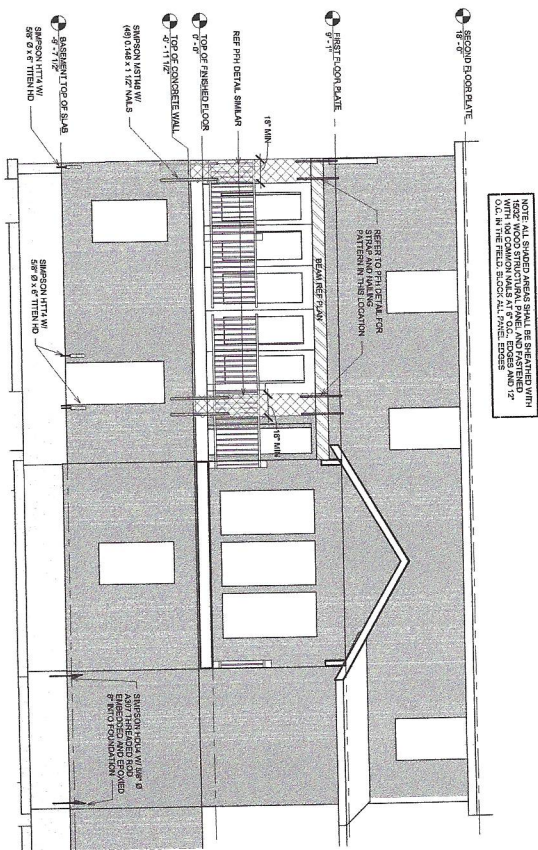
DRAWN BY: MLJ  
CHECKED BY: BSI

SHEET NUMBER

5505

Lee's Summit, MO 64082

N&S JOB NUMBER: 2022-2362  
© 2020 Norton & Schmidt Consulting Engineers



NOTE: ALL SHADDED AREAS SHALL BE SEATED WITH 2\"/>

1 WALL BRACING AT BACK ELEVATION  
SCALE: 1/4\"/>

ISSUES & REVISIONS

#	DATE	DESCRIPTION

DRAWN BY: MLR  
CHECKED BY: BSS  
ISSUED FOR:  

SHEET TITLE  
DETAILS

SHEET NUMBER  
S506

PROJECT INFORMATION

THE LEXINGTON II - 5 BEDROOMS W/ WALKOUT

2405 SW River Trail Road  
Lee's Summit, MO 64082

**Norton & Schmidt**  
Consulting Engineers, L.L.C.

311 East 11th Avenue  
North Kansas City, MO 64116  
Phone: (816) 421-4232  
Fax: (816) 421-1956  
www.nortonschmidt.com

N&S JOB NUMBER: 2022-2362  
© 2025 Norton & Schmidt Consulting Engineers