

Project No. 30841

TLE Signage Package

Arborwalk West

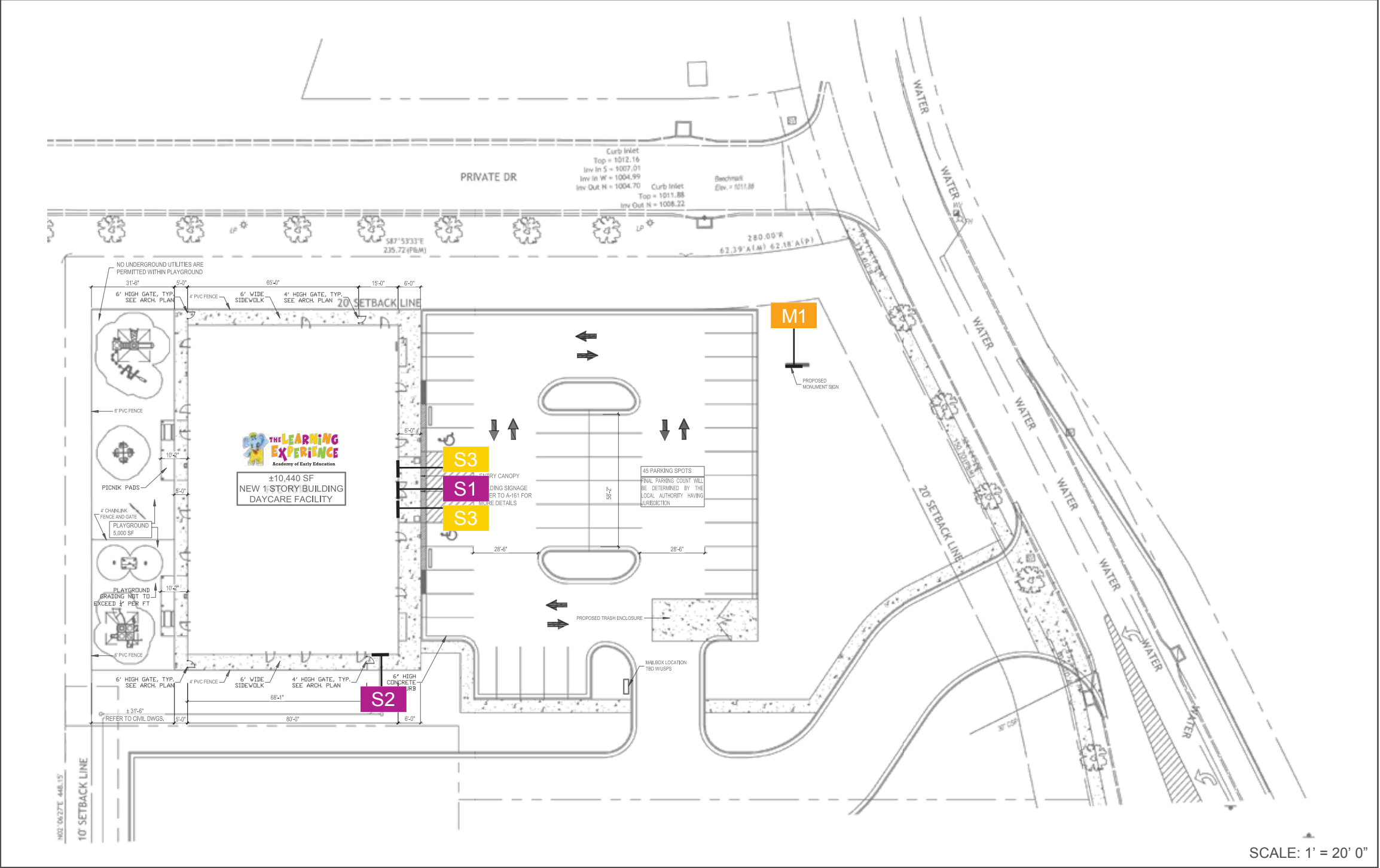
Lee's Summit, MO 64082

Location/Store Name: N/A



LEGEND	
S1	(East) Front Elevation - Wall Sign
S2	(South) Front Elevation - Wall Sign
S3	(East) Front Elevation - Column Sign
M1	Monument

SIGNAGE CRITERIA	
Code:	
Building signs- 10% of building façade for awning, canopy, or wall	
temp signs- max 40 sq ft	
Landlord restrictions:	
N/A	
S1	21' 8" X 125' 4"= 2714.64 x 10%= 271.4 SF Allowed
S2	21' 8" X 88' 0"= 1906 x 10%= 190.6 SF Allowed
S3	N/A
M1	N/A



425 N Martingale Rd
18th Floor
Schaumburg, IL 60173
Office 847.301.0510
identiti.net

W.O. No. 30841
Address Arborwalk West
City, ST Lee's Summit, MO 64082

Orig. Draft 03.29.2024
Project Mgr. N/A
Designer IDV

Rev. Art N/A
Rev. Date 00.00.0000
Page Rev. 000

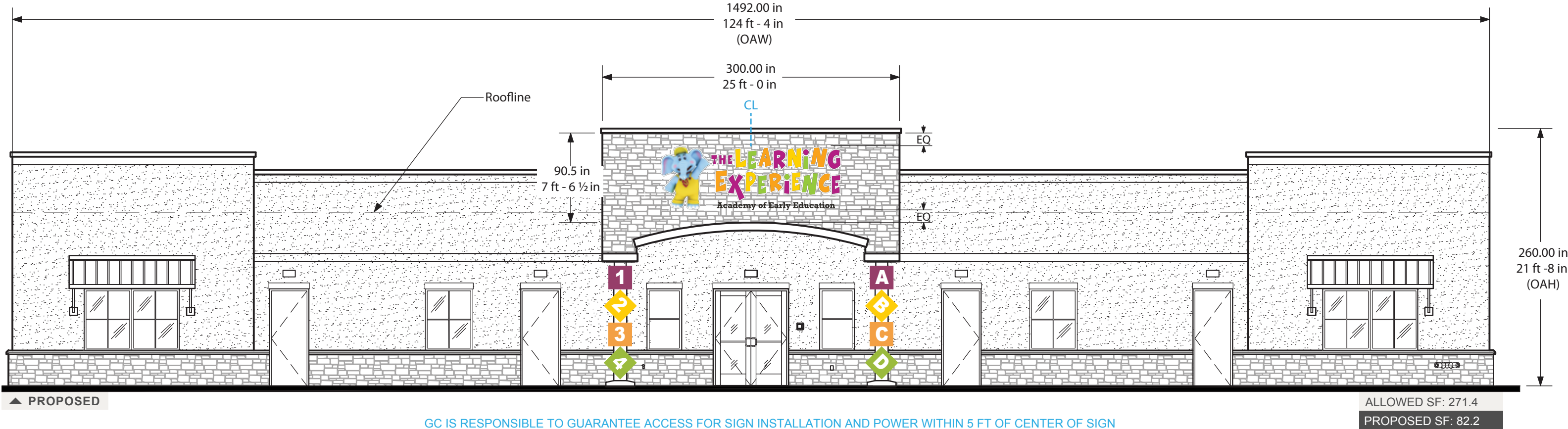
Customer



North

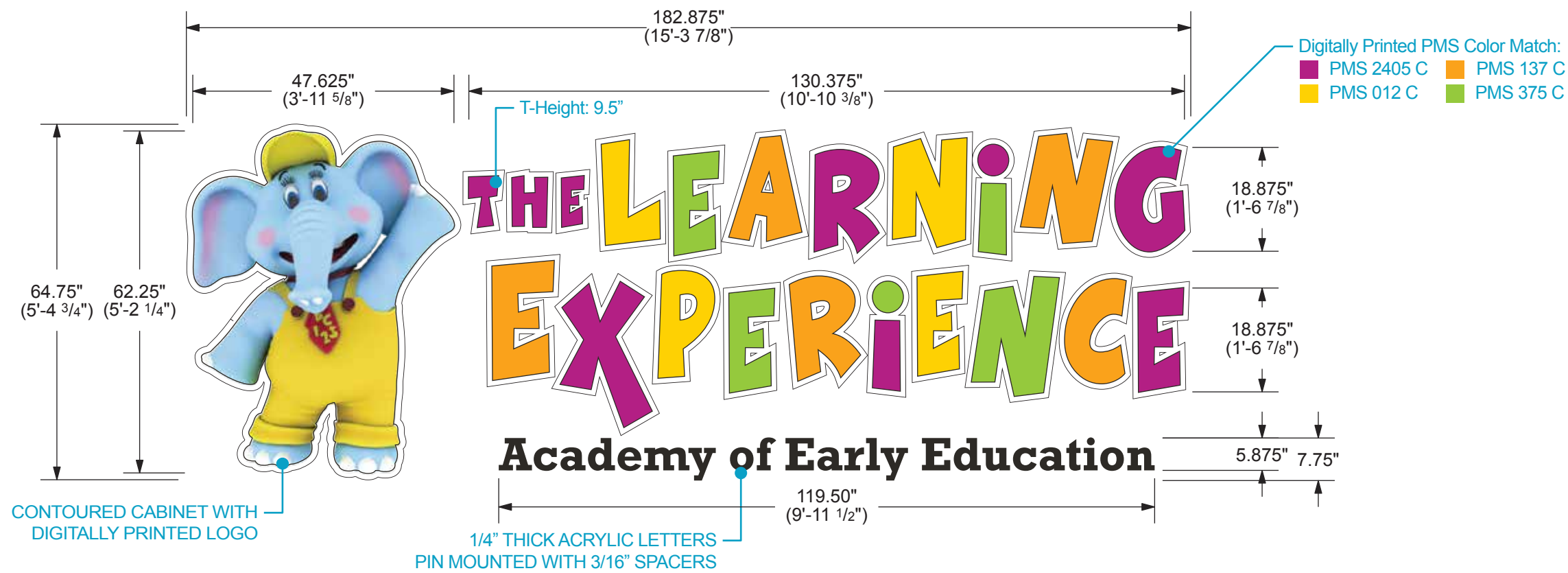


Plan View:
Site Plan
Exterior



GC IS RESPONSIBLE TO GUARANTEE ACCESS FOR SIGN INSTALLATION AND POWER WITHIN 5 FT OF CENTER OF SIGN

FIELD VERIFICATION REQUIRED



425 N Martingale Rd
18th Floor
Schaumburg, IL 60173
Office 847.301.0510
identiti.net

W.O. No. 30841
Address Arborwalk West
City, ST Lee's Summit, MO 64082

Orig. Draft 03.29.2024
Project Mgr. N/A
Designer IDV

Rev. Art Liz Morgan
Rev. Date 04.05.2024
Page Rev. 001

Color Palette

Face: White Acrylic	Backer & Return: White
Vinyl: Digital Print (Logo & PMS matches)	Tagline: PMS Black C
Trim: Black	N/A

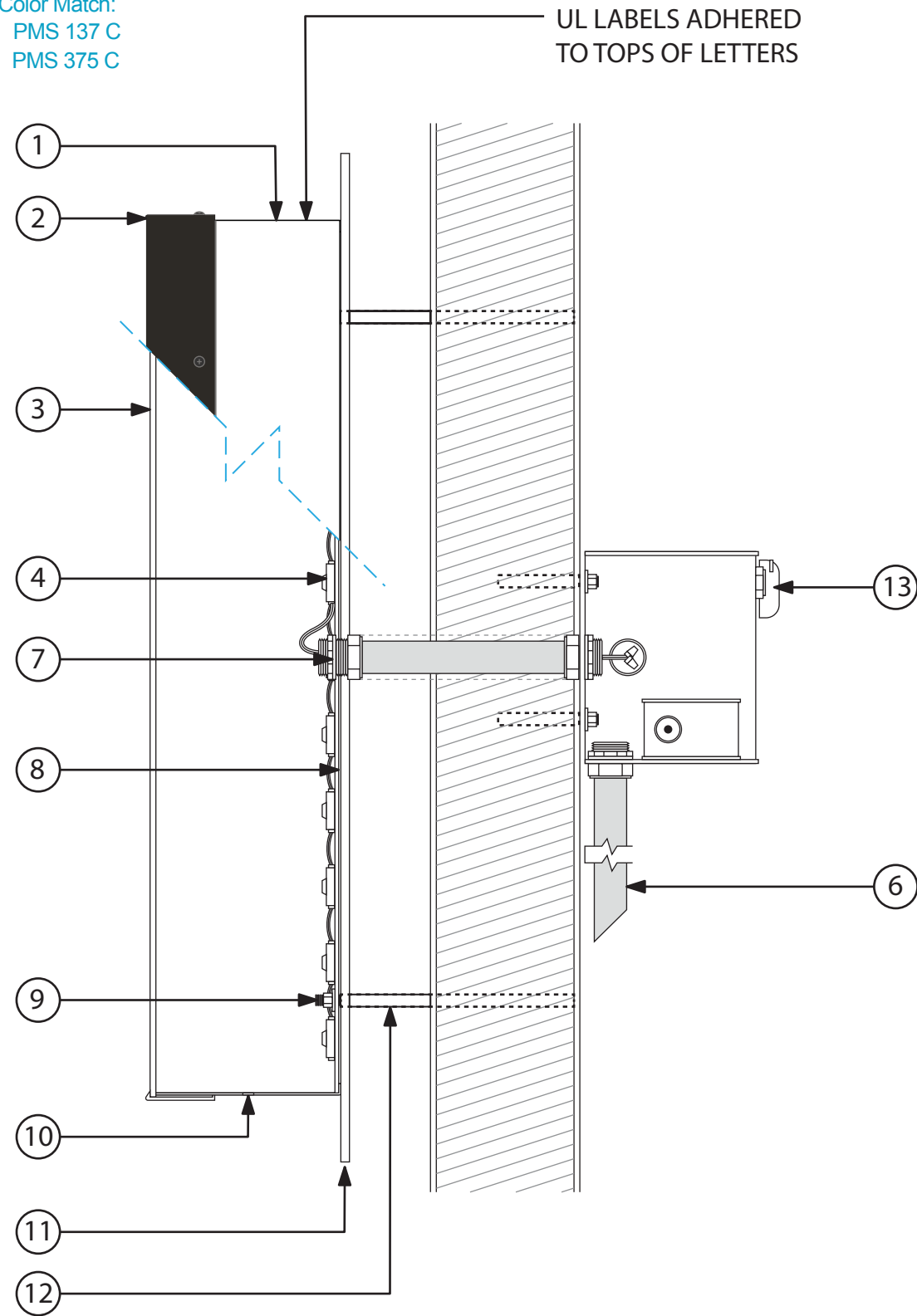
Sign Type:
LED Channel Letterset & Contoure
Cabinet, Front-Lit - Stand-Off
Mounted w/ Reverse Raceway

Signage:
S1
East Elevation



Digitally Printed PMS Color Match:

■ PMS 2405 C	■ PMS 137 C
■ PMS 012 C	■ PMS 375 C



- ① 0.040 ALUMINUM RETURNS (4" DEPTH): PAINTED WHITE
- ② 1" TRIM CAP: (WITH JEWELITE WASHER HEAD PHILLIPS SCREWS) BLACK
- ③ 3/16" ACRYLIC FACE: 2447 WHITE WITH APPLIED DIGITAL PRINT
- ④ LED UNITS (WHITE): AURORA 1 WHITE (LED WATTS - 128.1W) ALL LEDS TERMINATED WITH WIRENUTS
- ⑤ UL LISTED HOUSING: SECONDARY WIRING SPLICE POINT (WHEN NEEDED)
- ⑥ PRIMARY POWER CIRCUIT (PROVIDED/PERMITTED BY OTHERS) TO BE PLACED WITHIN 5 FEET OF CENTER OF SIGN
- ⑦ CONDUIT: WATER TIGHT WALL PASSTHRU

- ⑧ 0.063 ALUMINUM BACK: PRECOAT WHITE FINISH
- ⑨ MOUNTING HARDWARE: APPROPRIATE TO SECURE TO FACADE TYPE (TO HAVE WATER TIGHT SEAL)
- ⑩ WEEP HOLES
- ⑪ 0.125" ALUMINUM BACKER PAINTED WHITE
- ⑫ 1/2" NYLON SPACER: PAINTED BLACK
- ⑬ 7" X 4" DEPTH UL LISTED EXTRUDED RACEWAY WITH POWER SUPPLY (QTY VARIES) AND DISCONNECT SWITCH
- ⑭ MOUNTING HARDWARE: APPROPRIATE TO SECURE TO STRUCTURE

RACEWAY SPECIFICATIONS

STANDOFFS SHOULD BE BEHIND THE INDIVIDUAL BACKERS FOR THE LETTERING

SCALE: NTS



425 N Martingale Rd
18th Floor
Schaumburg, IL 60173
Office 847.301.0510
identiti.net

W.O. No. 30841
Address Arborwalk West
City, ST Lee's Summit, MO 64082

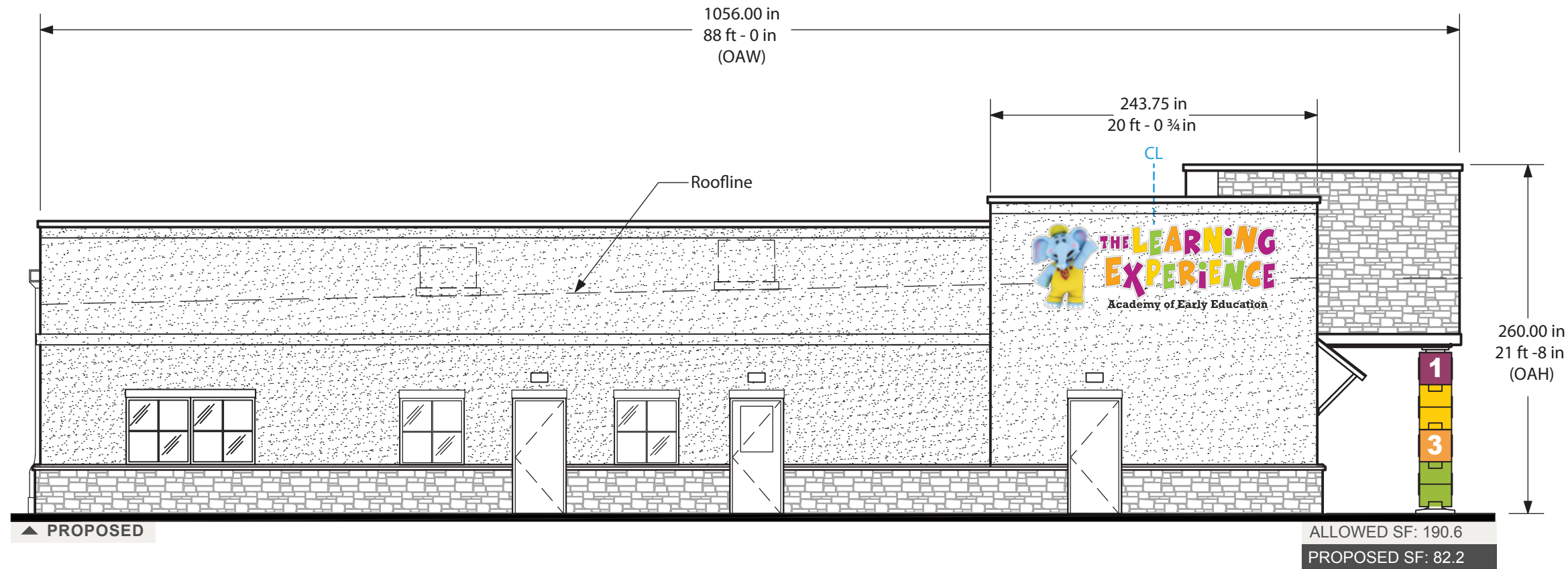
Orig. Draft 03.29.2024
Project Mgr. N/A
Designer IDV

Rev. Art Liz Morgan
Rev. Date 04.05.2024
Page Rev. 001

Color Palette	■ Face: White Acrylic	■ Backer & Return: White
	■ Vinyl: Digital Print (Logo & PMS matches)	■ Tagline: PMS Black C
	■ Trim: Black	■ N/A

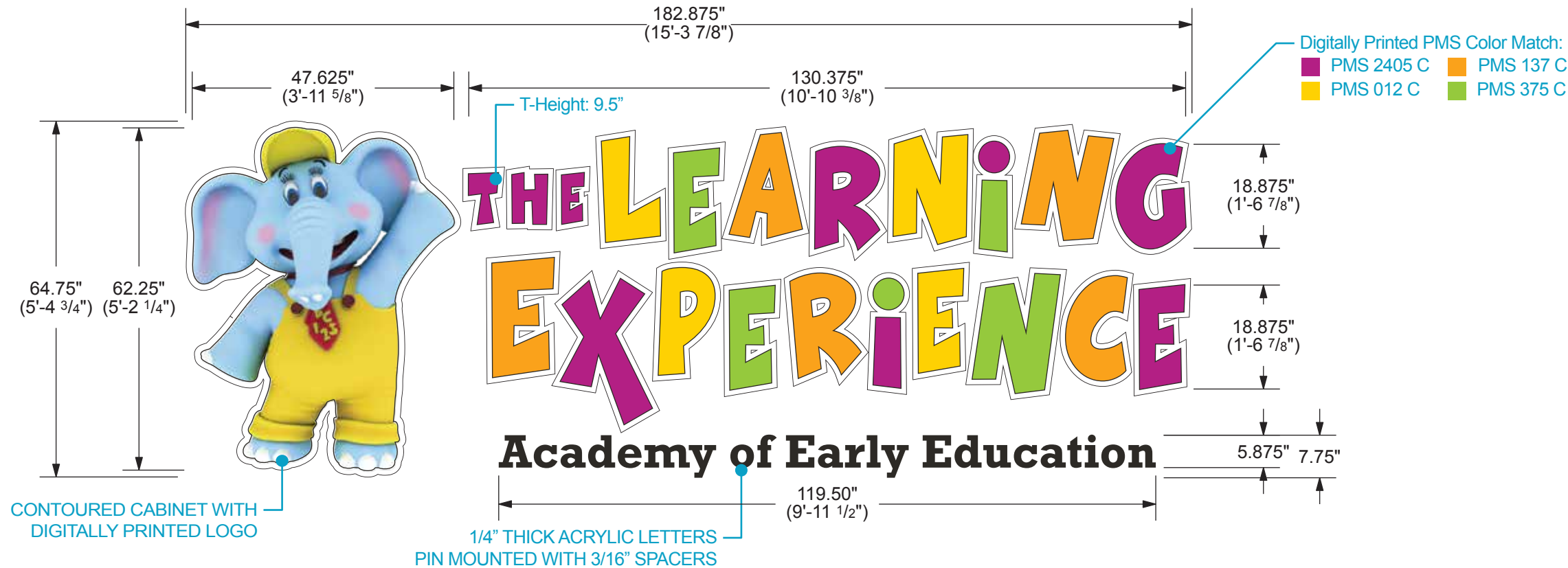
Sign Type:
LED Channel Letterset & Contoure
Cabinet, Front-Lit - Stand-Off
Mounted w/ Reverse Raceway

Signage:
S1
Sign Specification



GC IS RESPONSIBLE TO GUARANTEE ACCESS FOR SIGN INSTALLATION AND POWER WITHIN 5 FT OF CENTER OF SIGN

FIELD VERIFICATION REQUIRED



SCALE: 1/2" = 12"



425 N Martingale Rd
18th Floor
Schaumburg, IL 60173
Office 847.301.0510
identiti.net

W.O. No. 30841
Address Arborwalk West
City, ST Lee's Summit, MO 64082

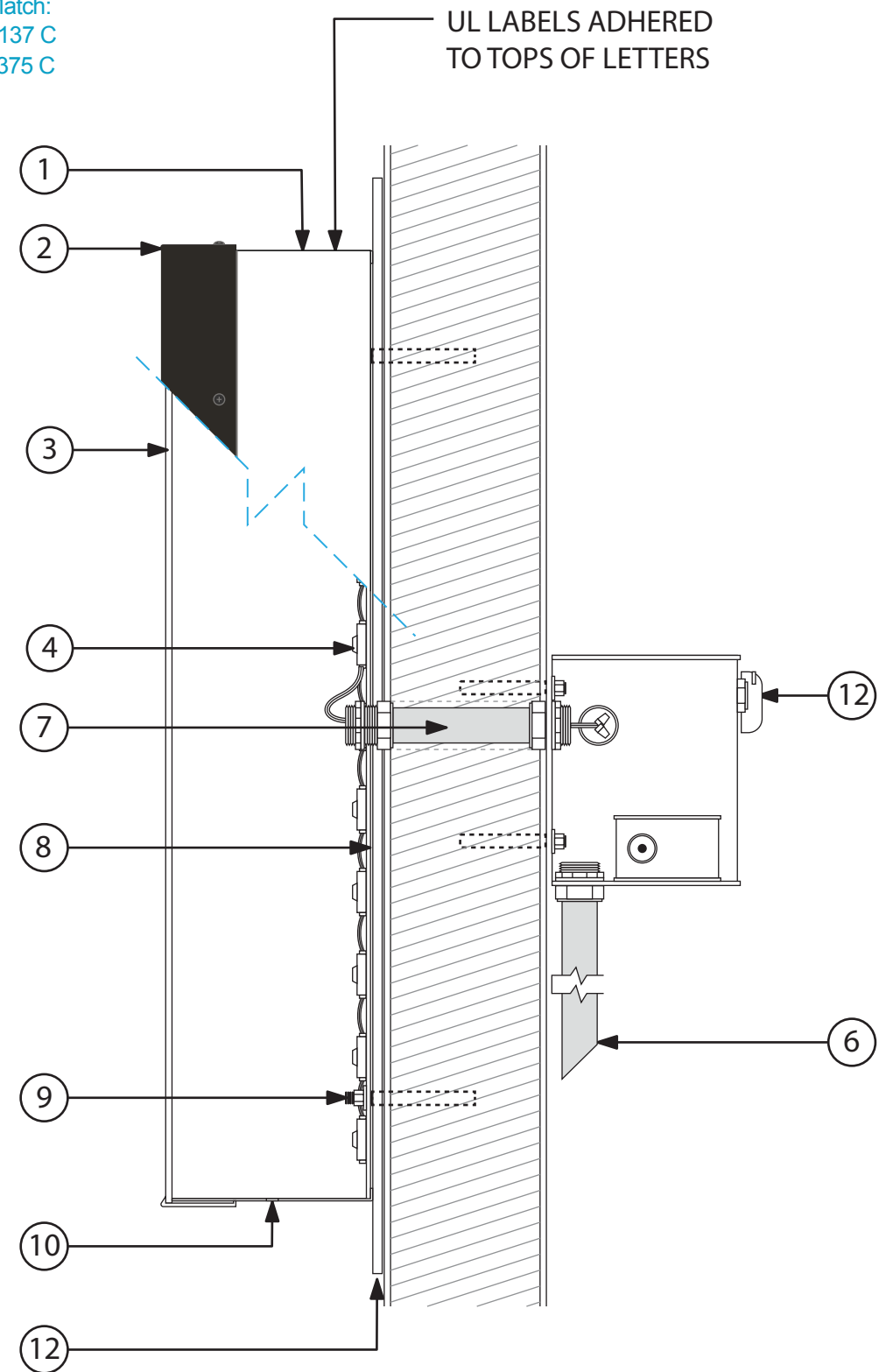
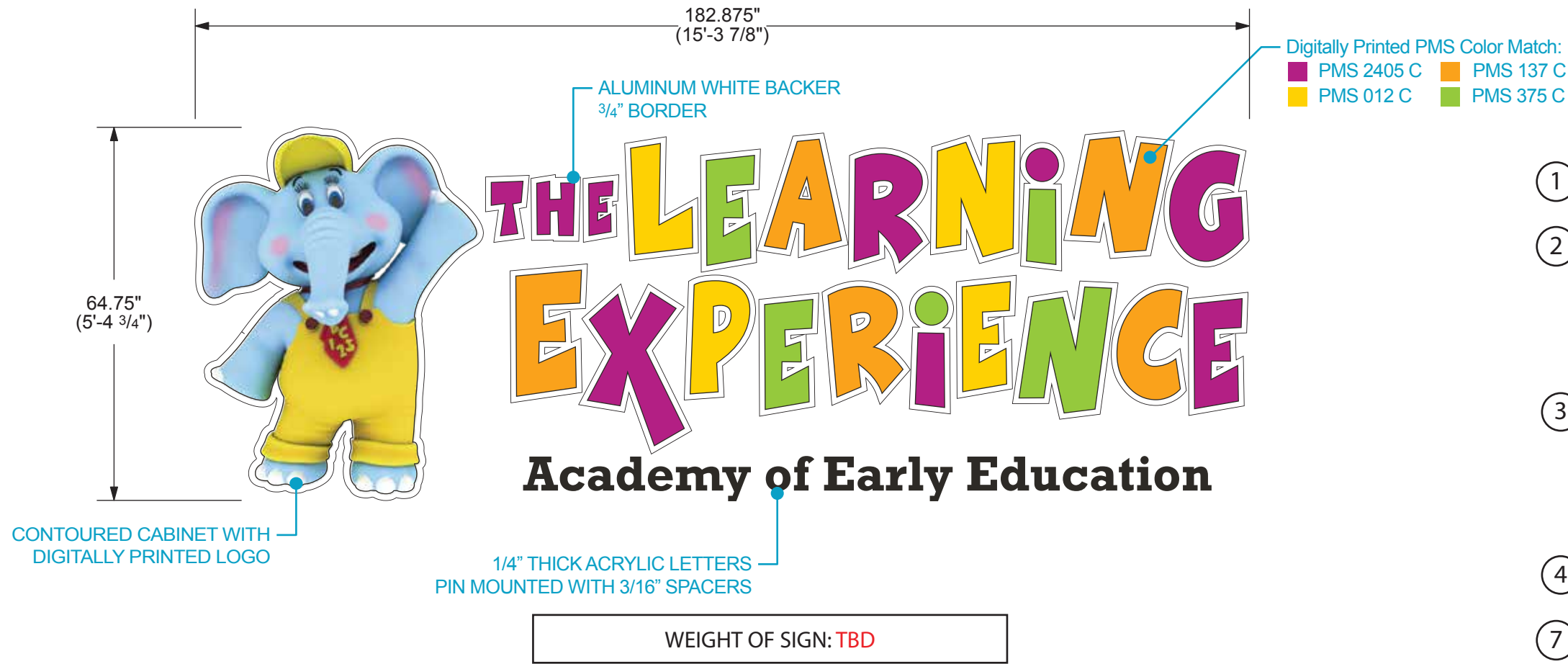
Orig. Draft 03.29.2024
Project Mgr. N/A
Designer IDV

Rev. Art Liz Morgan
Rev. Date 04.05.2024
Page Rev. 001

Color Palette
Face: White Acrylic
Vinyl: Digital Print (Logo & PMS matches)
Trim: Black
Backer & Return: White
Tagline: PMS Black C
N/A

Sign Type:
LED Channel Letterset & Contoure
Cabinet, Front-Lit - Flush Mounted
w/ Reverse Raceway

Signage:
S2
South Elevation



- 1 0.040 ALUMINUM RETURNS (4" DEPTH): PAINTED WHITE
- 2 1" TRIM CAP: (WITH JEWELITE WASHER HEAD PHILLIPS SCREWS) BLACK
- 3 3/16" ACRYLIC FACE: 2447 WHITE WITH APPLIED DIGITAL PRINT
- 4 LED UNITS (WHITE): AURORA 1 WHITE (LED WATTS - 128.1W) ALL LEDS TERMINATED WITH WIRENUTS
- 5 UL LISTED HOUSING: SECONDARY WIRING SPLICE POINT (WHEN NEEDED)
- 6 PRIMARY POWER CIRCUIT (PROVIDED/PERMITTED BY OTHERS) TO BE PLACED WITHIN 5 FEET OF CENTER OF SIGN
- 7 CONDUIT: WATER TIGHT WALL PASSTHRU

- 8 0.063 ALUMINUM BACK: PRECOAT WHITE FINISH
- 9 MOUNTING HARDWARE: APPROPRIATE TO SECURE TO FACADE TYPE (TO HAVE WATER TIGHT SEAL)
- 10 WEEP HOLES
- 11 0.125" ALUMINUM BACKER PAINTED WHITE
- 12 1/2" NYLON SPACER: PAINTED BLACK

RACEWAY SPECIFICATIONS

- 12 7" X 4" DEPTH UL LISTED EXTRUDED RACEWAY WITH POWER SUPPLY (QTY VARIES) AND DISCONNECT SWITCH
- 13 MOUNTING HARDWARE: APPROPRIATE TO SECURE TO STRUCTURE

SCALE: NTS



425 N Martingale Rd
18th Floor
Schaumburg, IL 60173
Office 847.301.0510
identiti.net

W.O. No. 30841
Address Arborwalk West
City, ST Lee's Summit, MO 64082

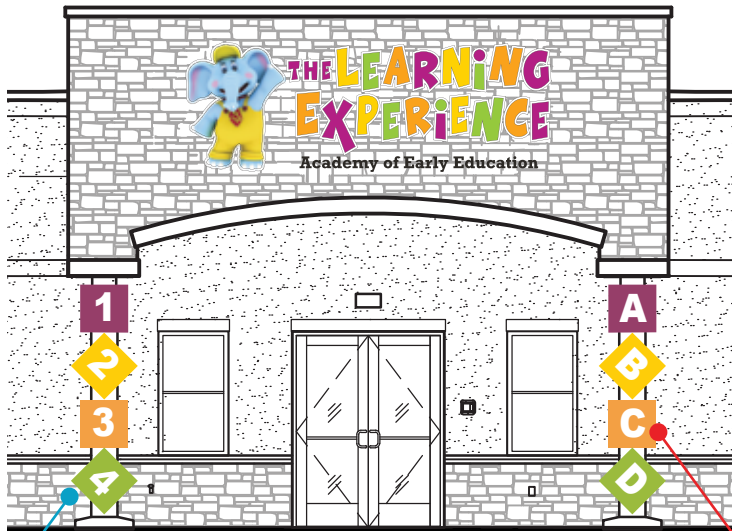
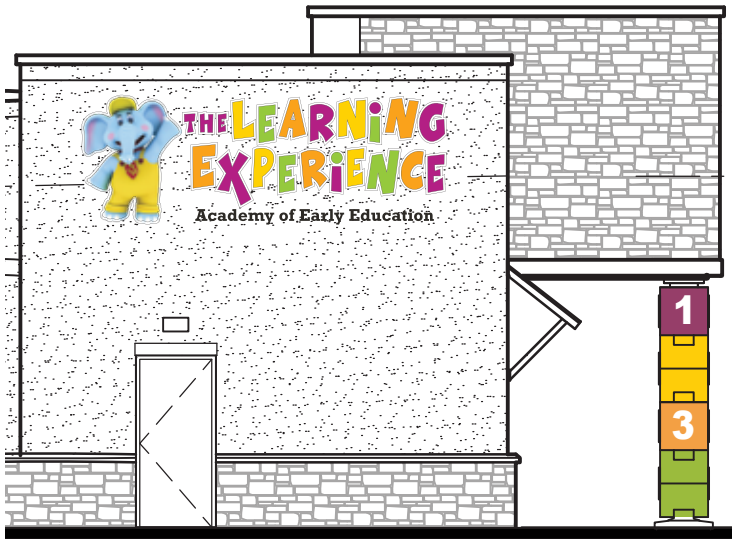
Orig. Draft 03.29.2024
Project Mgr. N/A
Designer IDV

Rev. Art Liz Morgan
Rev. Date 04.05.2024
Page Rev. 001

Color Palette		Face: White Acrylic		Backer & Return: White
		Vinyl: Digital Print (Logo & PMS matches)		Tagline: PMS Black C
		Trim: Black		N/A

Sign Type:
LED Channel Letterset & Contoure
Cabinet, Front-Lit - Flush Mounted
w/ Reverse Raceway

Signage:
S2
Sign Specification



SCOPE OF WORK: FABRICATION & INSTALLATION OF ACRYLIC NUMBERS & LETTERS (24" CUBES PROVIDED/INSTALLED BY OTHERS)

PROPOSED

ALLOWED SF: N/A

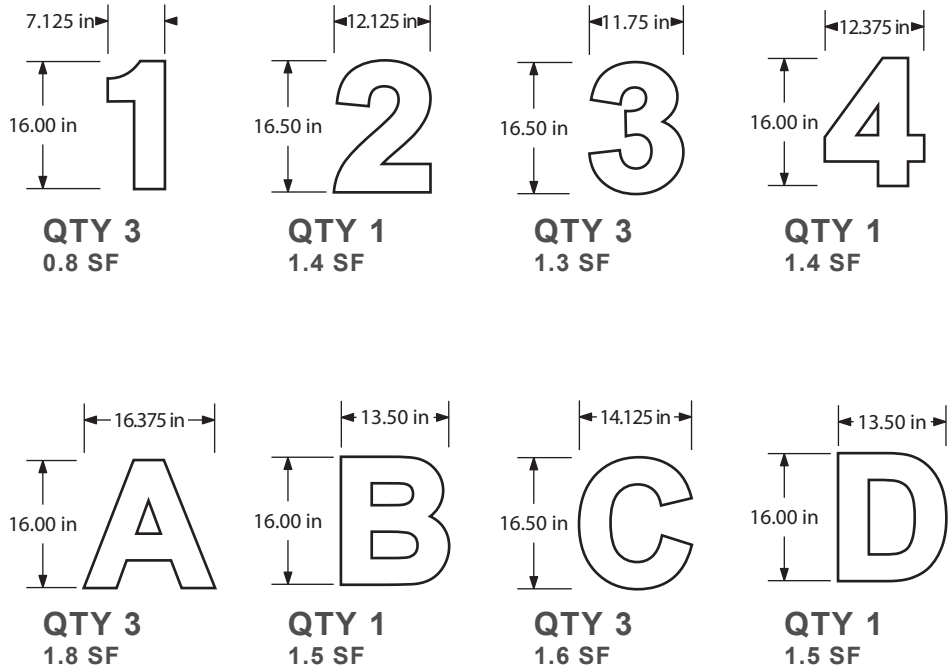
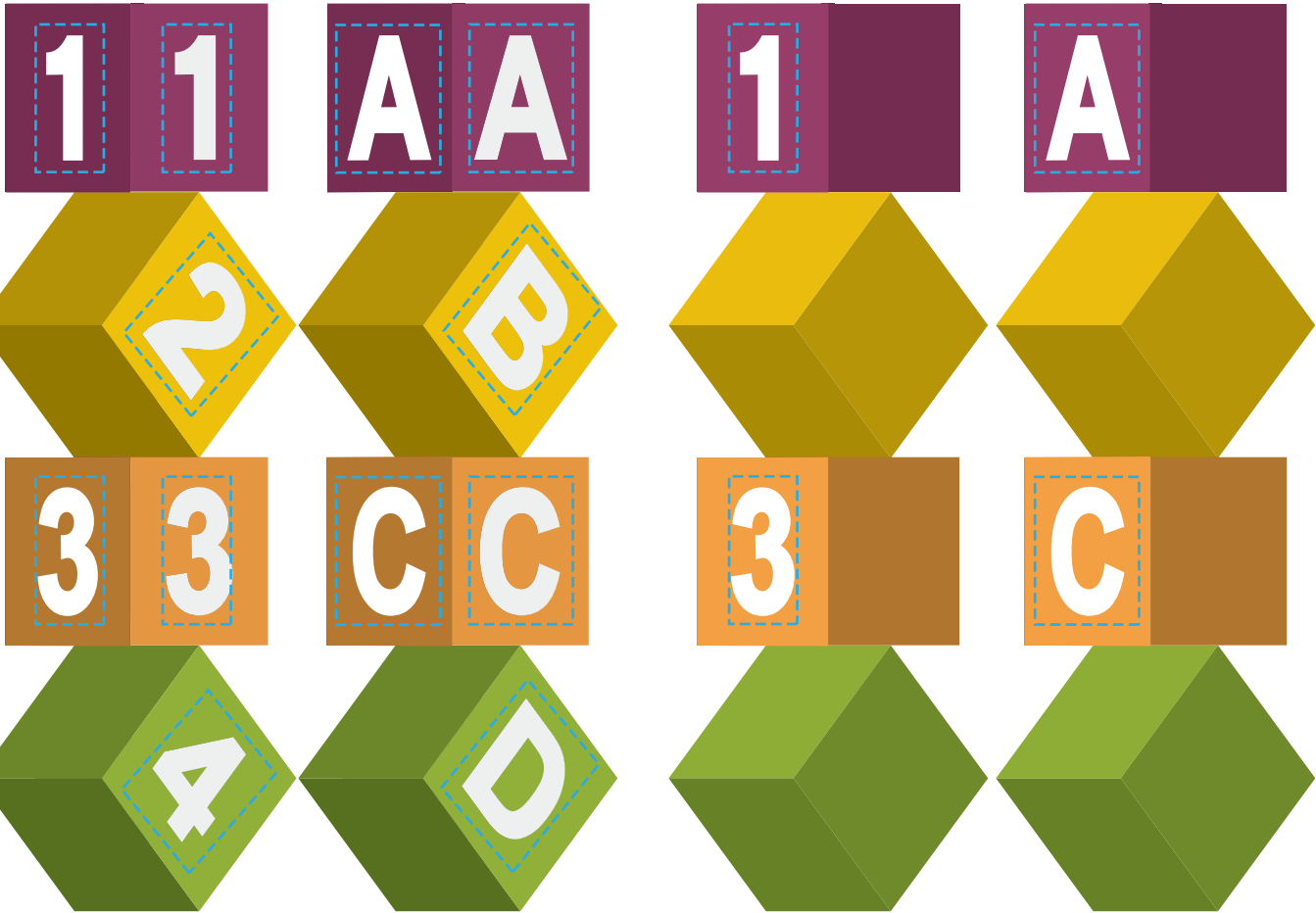
PROPOSED SF: 31.6

FIELD VERIFICATION REQUIRED

FINAL PRODUCT

Left Side Front

Right Side Back



SCALE: 1/2" = 12"



425 N Martingale Rd
18th Floor
Schaumburg, IL 60173
Office 847.301.0510
identiti.net

W.O. No. 30841
Address Arborwalk West
City, ST Lee's Summit, MO 64082

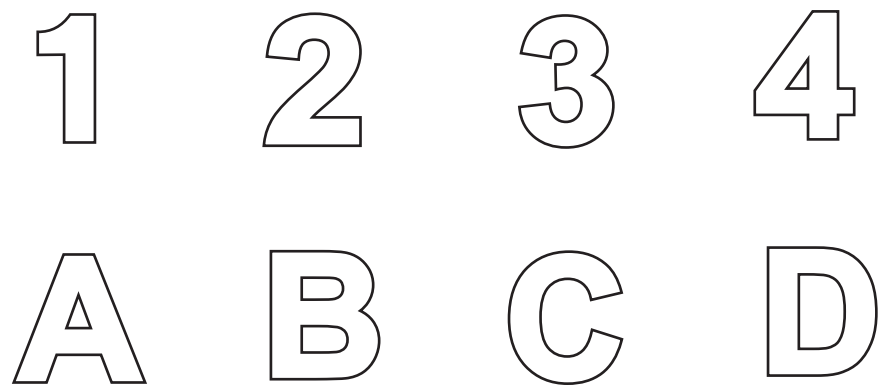
Orig. Draft 03.29.2024
Project Mgr. N/A
Designer IDV

Rev. Art N/A
Rev. Date 00.00.0000
Page Rev. 000

Color Palette	Face: White Acrylic	N/A
	N/A	N/A
	N/A	N/A

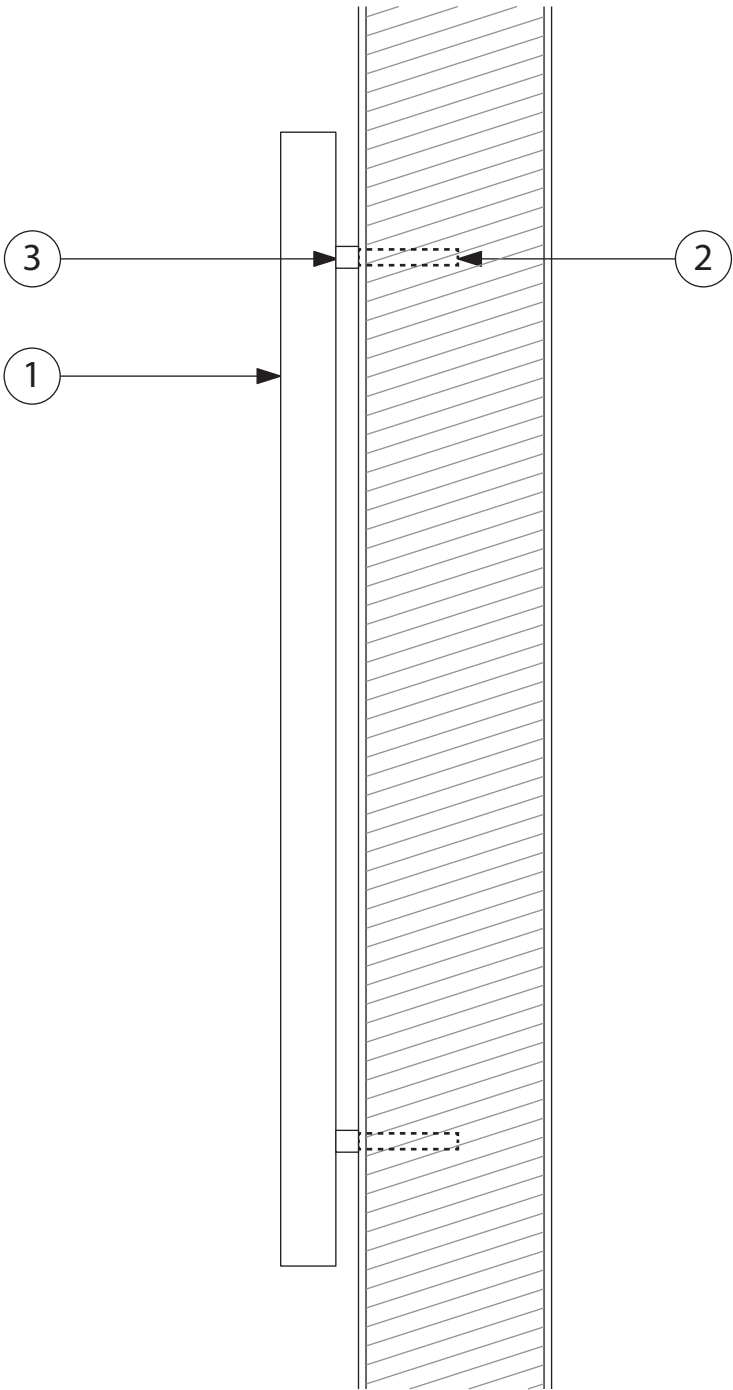
Sign Type:
Non-Illuminated Acrylic Copy
Pin Mounted with Spacers

Signage:
S3-1
Column Sign



SPECIFICATIONS

- 1 3/8" THICK ACRYLIC FCO LETTERS
PAINTED WHITE
- 2 MOUNTING HARDWARE:
THREADED ROD (SIZE VARIES ON LETTER HEIGHT)
- 3 3/16" SPACER
SLEEVED OVER MOUNTING HARDWARE



SCALE: NTS



425 N Martingale Rd
18th Floor
Schaumburg, IL 60173
Office 847.301.0510
identiti.net

W.O. No. 30841
Address Arborwalk West
City, ST Lee's Summit, MO 64082

Orig. Draft 03.29.2024
Project Mgr. N/A
Designer IDV

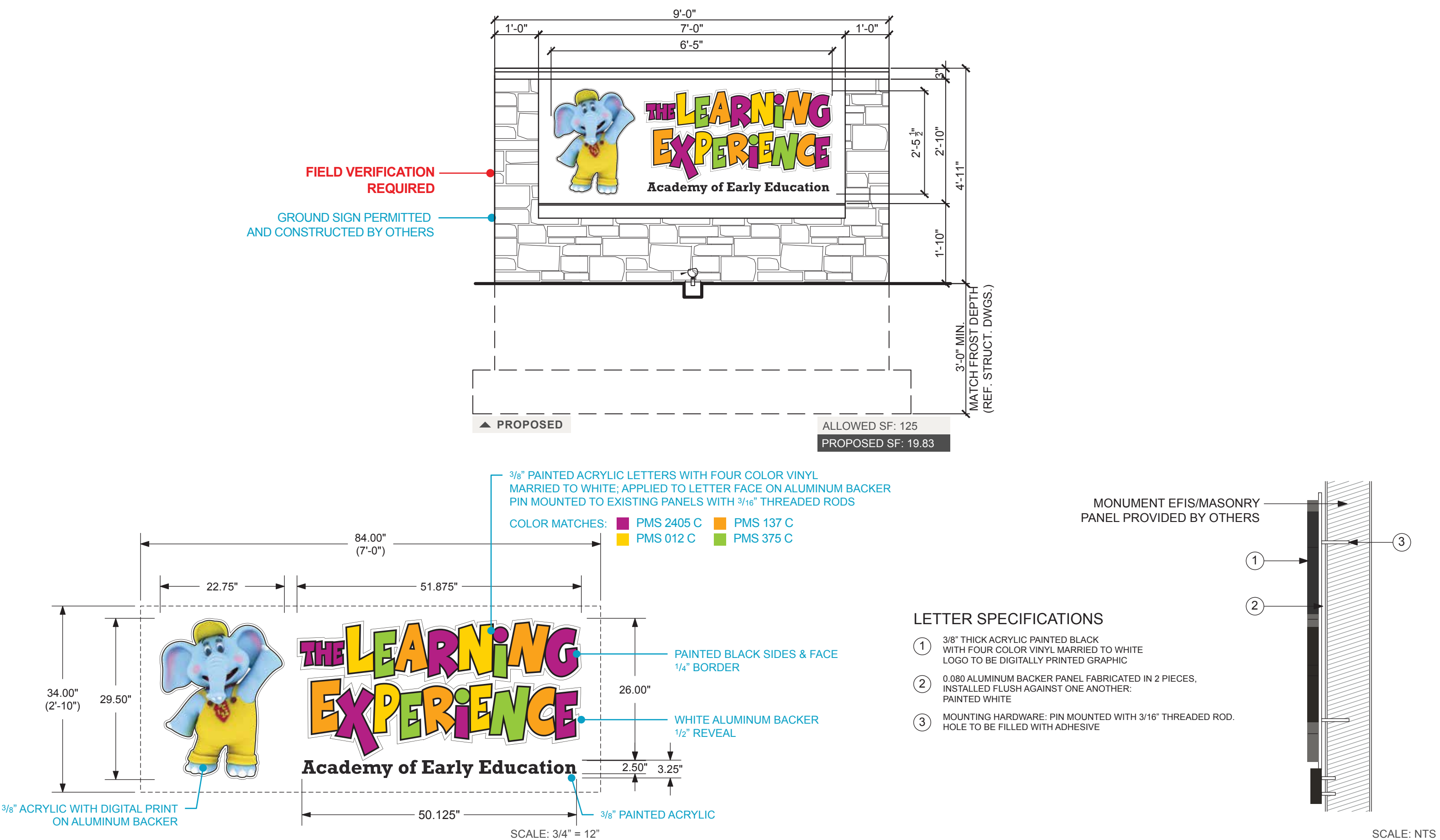
Rev. Art N/A
Rev. Date 00.00.0000
Page Rev. 000

Color Palette

Face: White Acrylic	N/A
N/A	N/A
N/A	N/A

Sign Type:
Non-Illuminated Acrylic Copy
Pin Mounted with Spacers

Signage:
S3-1
Sign Specification



425 N Martingale Rd
18th Floor
Schaumburg, IL 60173
Office 847.301.0510
identiti.net

W.O. No. 30841
Address Arborwalk West
City, ST Lee's Summit, MO 64082

Orig. Draft 03.29.2024
Project Mgr. N/A
Designer IDV

Rev. Art N/A
Rev. Date 00.00.0000
Page Rev. 000

Color Palette		Face: White Acrylic		Backer & Return: White
		Vinyl: Digital Print (Logo & PMS matches)		N/A
		Tagline: PMS Black C		N/A

Sign Type:
(QTY 2) Painted Acrylic
Letters on Aluminum Backer,
Pin Mounted

Signage:
M1
Monument Sign