

ELECTRICAL RISER DIAGRAM

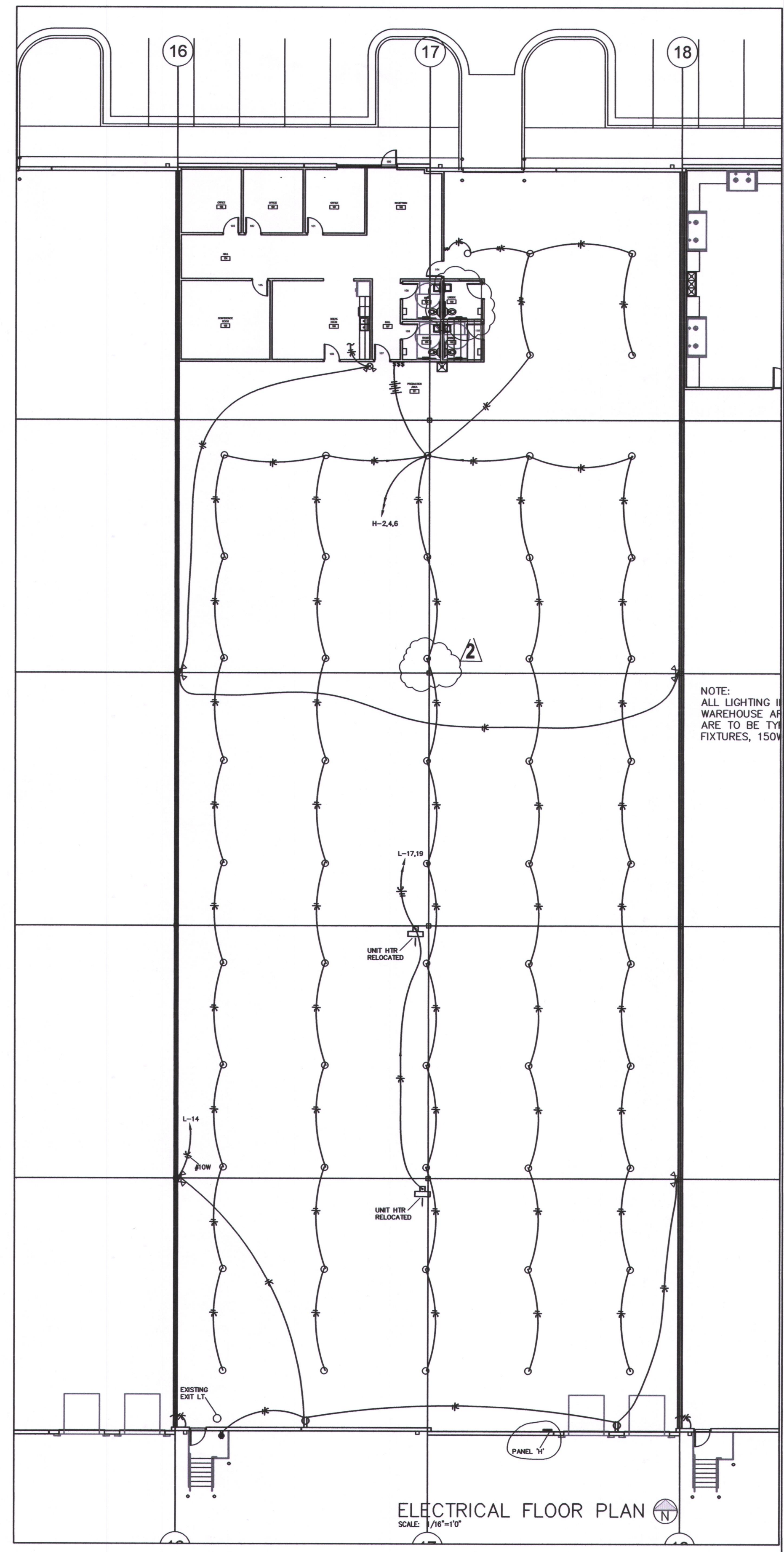
ESTIMATED AVAILABLE FAULT CURRENT IS 51242 AMPS
ELECTRICAL EQUIPMENT SHALL BE 65000 AMPS RATED

LIGHT FIXTURE SCHEDULE

- A RAB #H17 HIGH BAY LED, 150WATT, 277V, 4000K, WITH CORD PROVIDE WITH HOOK TO HANG FROM ROOF
- B EIKO #SLM2462C5840U 2'X4' LEDSLIM PANEL 6200 LUMENS, 4000K, 50 WATT, 120 V
- C SIMILAR TO TYPE B EXCEPT 2'X2'LED, 120 V
- ⊗ COMBO EXIT/ EMERGENCY LIGHT LITHONIA #LHQM LED RHO
- ◀ EMERGENCY LIGHT LITHONIA #ELM2 LED

PANEL H MOUNTING SURFACE BUS 600 MAIN 600A TYPE BOLT-IN						
LOCATION WAREHOUSE VOLT 277/480 3 Ø 4 WIRE						
CKT. NO.	DESCRIPTION	BKR.	CKT. V.A.	CKT. V.A.	BKR.	DESCRIPTION
1	LIGHTING	20	1200	1350	20	LIGHTING
3	LIGHTING	20	1000	1350	20	LIGHTING
5	COND UNIT	30/3	10,000	1950	20	LIGHTING
7				16500	90/3	PANEL 'L'
9						
11	SPARE	20				
13	SPARE	20				SPACE
15	SPARE	20				SPACE
17	SPARE	20				SPACE
19	SPARE	20				SPACE
21	SPARE	20				SPACE
23	SPARE	20				SPACE
25	SPARE	20				SPACE
27	SPACE					SPACE
29	SPACE					SPACE
31	SPACE					SPACE
33	SPACE					SPACE
35	SPACE					SPACE
37	SPACE					SPACE
39	SPACE					SPACE
41	SPACE					SPACE
				TOTAL VOLT AMPS		

PANEL L MOUNTING SURFACE BUS 100A MAIN 100A TYPE PLUG-IN						
LOCATION WAREHOUSE VOLT 120/208 3 Ø 4 WIRE						
CKT. NO.	DESCRIPTION	BKR.	CKT. V.A.	CKT. V.A.	BKR.	DESCRIPTION
1	BATHROOMS	20	1200	1000	20	RECEPTS
3	RECEPTS	20	1000	1000	20	RECEPTS
5	RECEPTS	20	800	1000	20	RECEPTS
7	RECEPTS	20	1200	800	20	KIT REC
9	DISPOSAL	20	800	800	20	KIT REC
11	REFRIG	20	1200	1200	20	DISPOSAL
13	FURNACE	20	1200	600	20	RECEPTS
15	WTR HTR	20	500			SPACE
17	UNIT HTR	20	800			SPACE
19	UNIT HTR	20	800			SPACE
21	SPARE	20				SPACE
23	SPARE	20				SPACE
25	SPARE	20				SPACE
27	SPARE	20				SPACE
29	SPARE	20				SPACE
31	SPARE	20				SPACE
33	SPARE	20				SPACE
35	SPARE	20				SPACE
37	SPARE	20				SPACE
39	SPARE	20				SPACE
41	SPARE	20				SPACE
				TOTAL VOLT AMPS		



Architect:

MIDWEST ARCHITECTS
1120 NW Eagle Ridge Blvd.
Grain Valley, Missouri 64029
t: (816) 229-8115

Client:

Ward Development
1120 NW Eagle Ridge Blvd.
Grain Valley, Missouri 64029
t: (816) 229-8115

Consultants:

MEP Engineering:
Casburn Consultants
Professional Engineering
128 SW Hillcrest Lane
Lee's Summit, MO 64063
t: (816) 726-6531

Revisions to technical submissions which are not made or approved by the licensee are prohibited.

Seal:

Project Number: 2401
Project Type: TENANT FINISH
Project Name and Address:
WALLFLOWER MERCH
2229 NW Town Centre Blvd.
Lee's Summit, Missouri 64064

Issue: Permit Submittal Date: 03.11.24
1 Plan Review
2 Rev Unit Htrs 04.05.24
3 Rev elec riser 04.16.24

Sheet Title:

E-1

Architect:

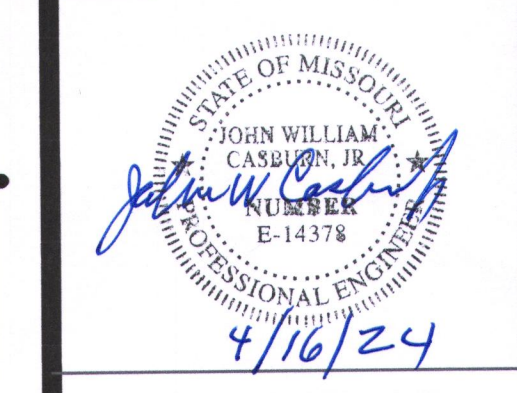
8 MIDWEST ARCHITECTS
1120 NW Eagle Ridge Blvd.
Grain Valley, Missouri 64029
t: (816) 229-8115

Client:
Ward Development
1120 NW Eagle Ridge Blvd.
Grain Valley, Missouri 64029
t: (816) 229-8115

Consultants:
MEP Engineering:
Casburn Consultants
Professional Engineering
128 SW Hillcrest Lane
Lee's Summit, MO 64063
t: (816) 726-6531

Revisions to technical submissions which are not made or approved by the licensee are prohibited.

Seal:

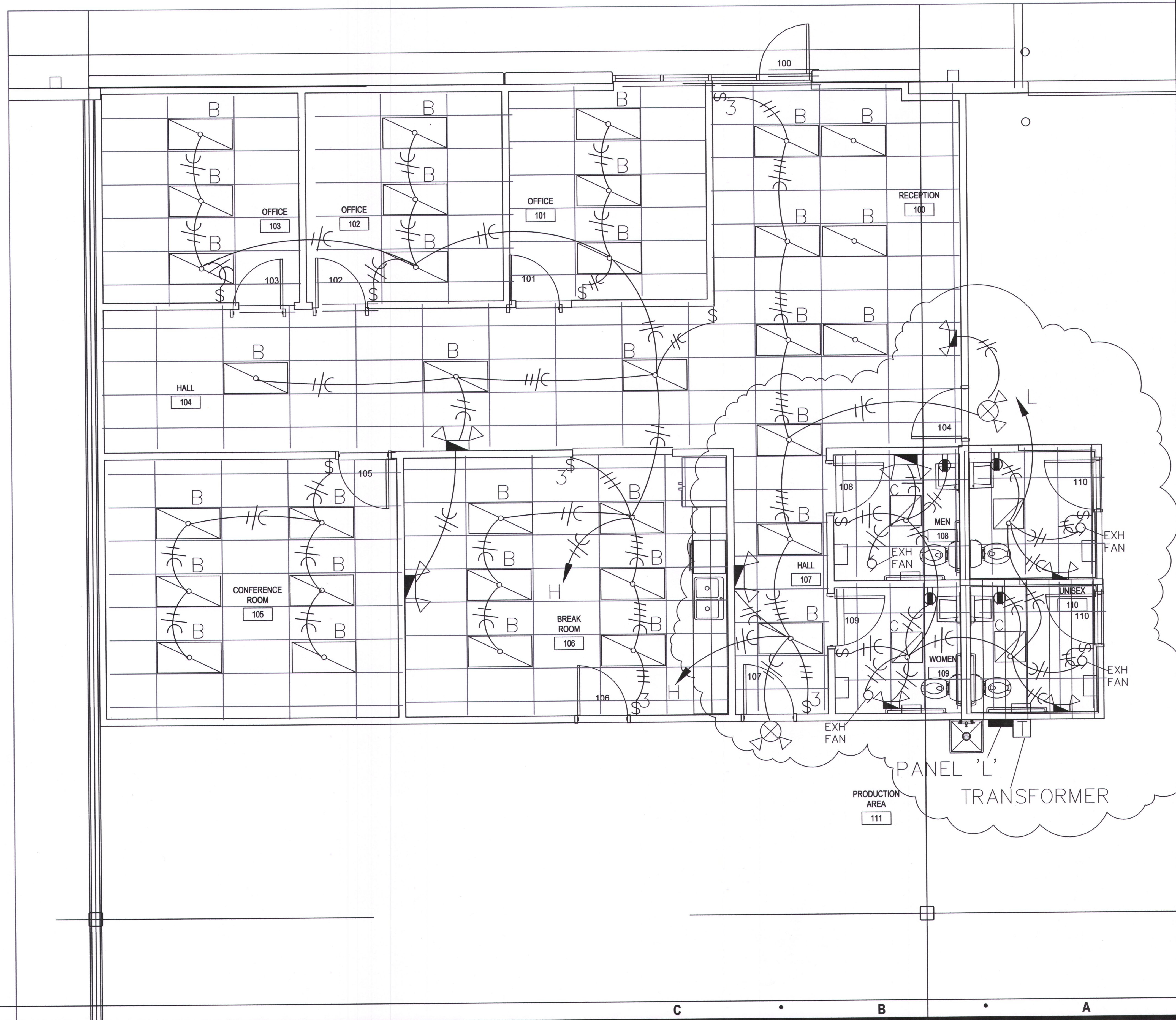


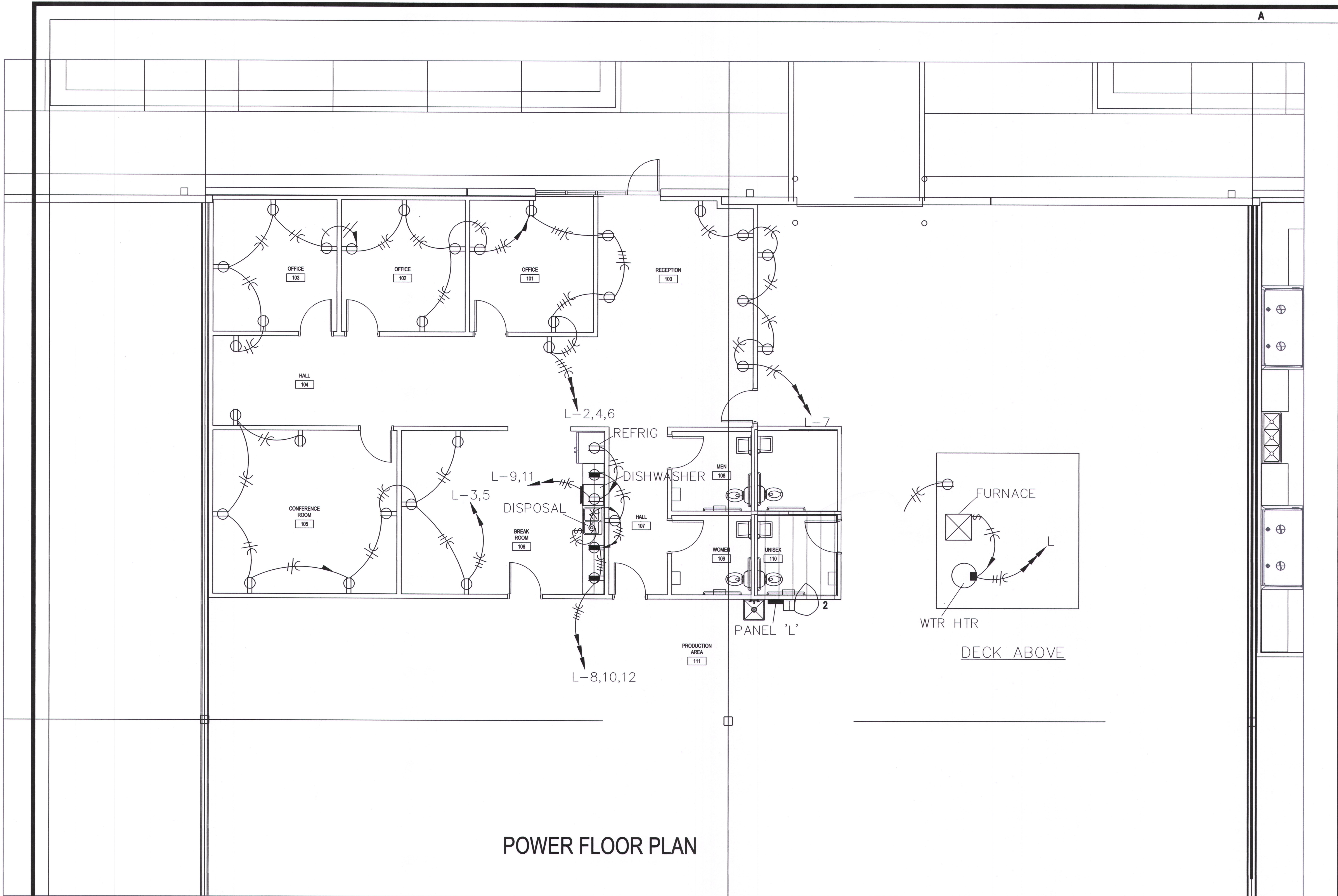
Project Number: 2401
Project Type: TENANT FINISH
Project Name and Address:

WALFLOWER MERCH
2229 NW Town Centre Blvd.
Lee's Summit, Missouri 64064

Issue: Date:
Permit Submittal 03.11.24
Plan Review
Revisions
2 Move Panel 04.16.24

Sheet Title:





POWER FLOOR PLAN

Architect:

MIDWEST ARCHITECTS
1120 NW Eagle Ridge Blvd.
Grain Valley, Missouri 64029
t: (816) 229-8115

Client:

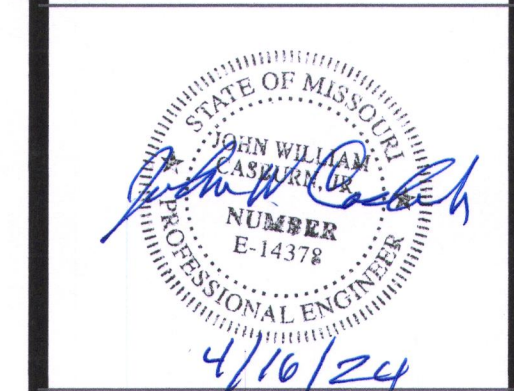
Ward Development
1120 NW Eagle Ridge Blvd.
Grain Valley, Missouri 64029
t: (816) 229-8115

Consultants:

MEP Engineering:
Casburn Consultants
Professional Engineering
128 SW Hillcrest Lane
Lee's Summit, MO 64063
t: (816) 726-6531

Revisions to technical submissions which are not made or approved by the licensee are prohibited.

Seal:



Project Number: 2401
Project Type: TENANT FINISH
Project Name and Address:

WALLFLOWER MERCH
2229 NW Town Centre Blvd.
Lee's Summit, Missouri 64064

Issue: Permit Submittal
Date: 03.11.24
Plan Review
Revisions: 2 Plan Review
Date: 04.16.24

Sheet Title: