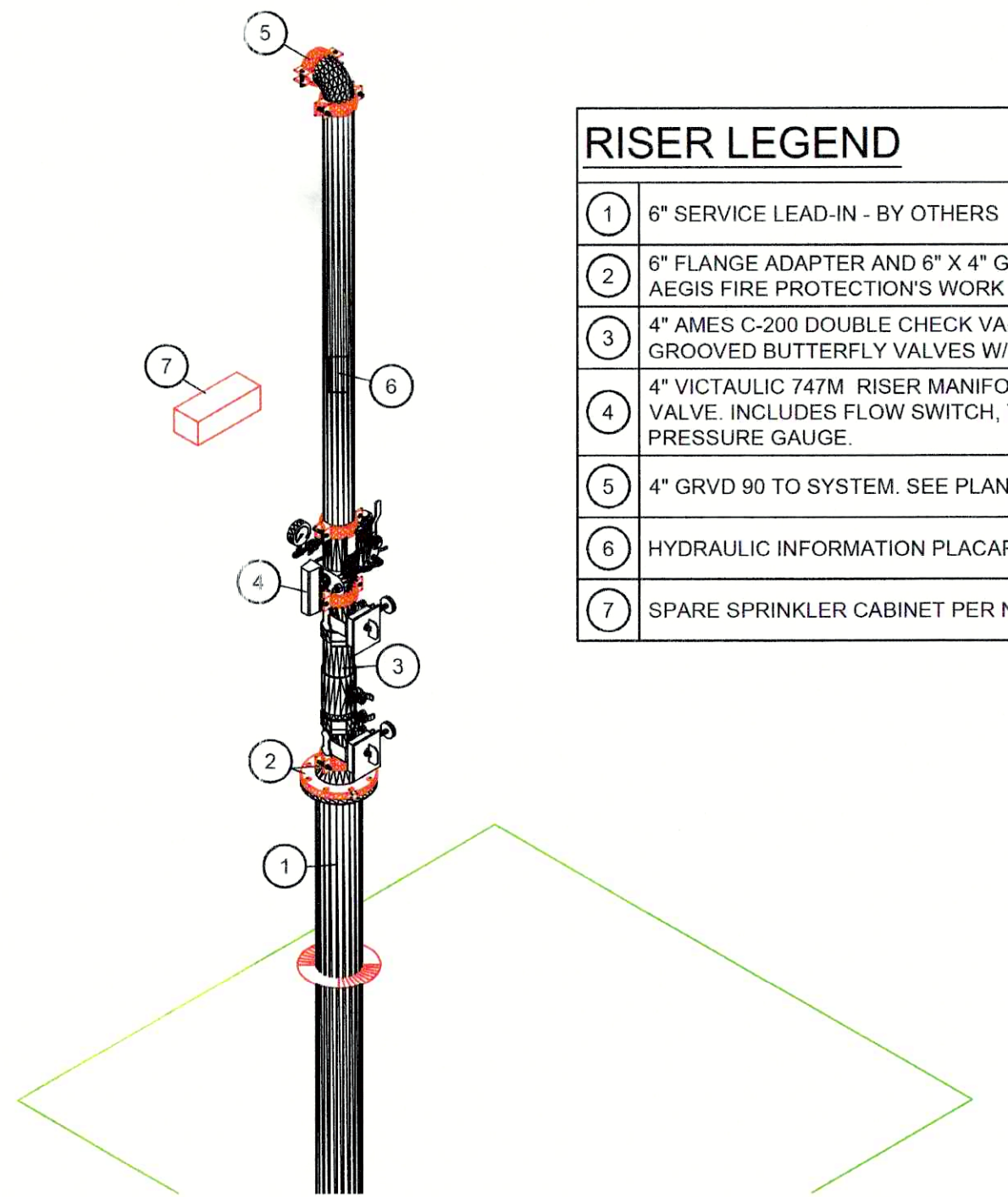
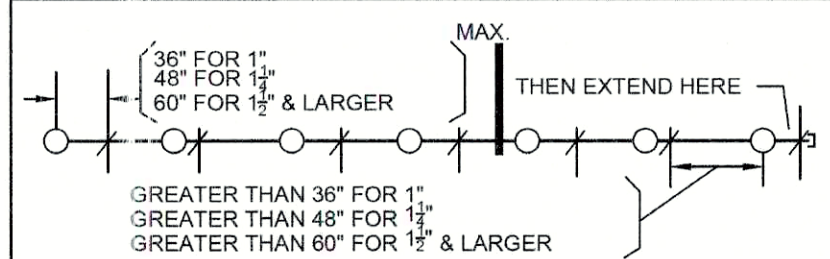


PLAN NOTES	
1	SEE SHEET 1 FOR U.G. PIPING & RISER DETAIL.
2	IT IS THE RESPONSIBILITY OF OTHERS TO PROTECT ELECTRICAL EQUIPMENT FROM SPRINKLER SPRAY, ESPECIALLY THIS AREA.
3	OUTSIDE NON COMBUSTIBLE NOT USED FOR STORAGE, NO SPRINKLERS REQUIRED.
4	AUXILIARY DRAIN (LOCATE IN FIELD)
5	OUTSIDE AND OPEN TO SKY, NO SPRINKLERS REQUIRED.



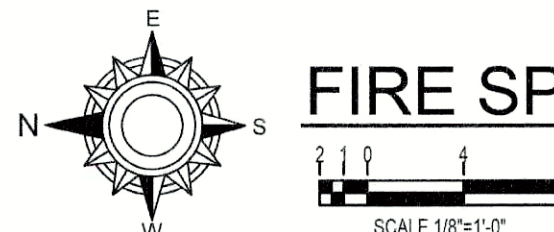
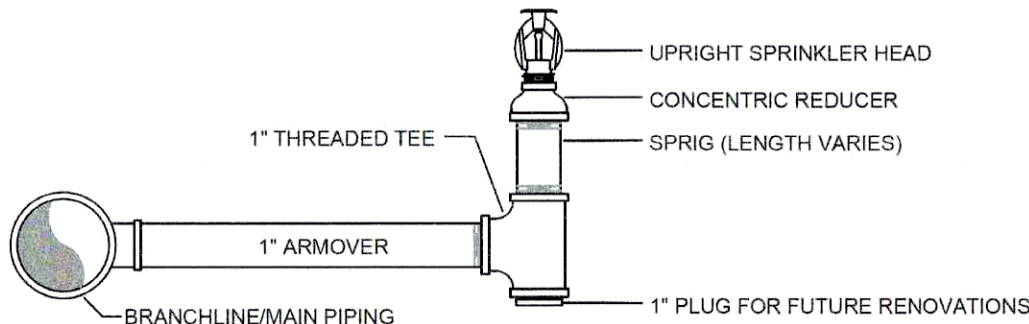
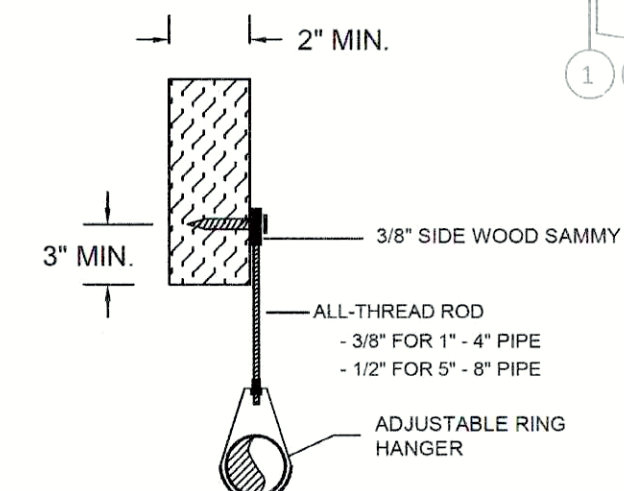
RISER LEGEND	
1	6" SERVICE LEAD-IN - BY OTHERS
2	6" FLANGE ADAPTER AND 6" X 4" GRVD STYLE 50 REDUCER. AEGIS FIRE PROTECTION'S WORK STARTS HERE.
3	4" AMES C-200 DOUBLE CHECK VALVE ASSEMBLY WITH GROOVED BUTTERFLY VALVES W/ TAMPER.
4	4" VICTAULIC 747M RISER MANIFOLD W/PRESSURE RELIEF VALVE. INCLUDES FLOW SWITCH, TEST N DRAIN, AND PRESSURE GAUGE.
5	4" GRVD 90 TO SYSTEM. SEE PLAN FOR CONTINUATION
6	HYDRAULIC INFORMATION PLACARD
7	SPARE SPRINKLER CABINET PER NFPA-13

MAXIMUM DISTANCE BETWEEN HANGERS (FT-IN.) PER NFPA-13									
PIPE SIZE:	3/4"	1"	1 1/2"	2"	2 1/2"	3"	4"	6"	
STEEL PIPE	N/A	12-0	12-0	15-0	15-0	15-0	15-0	15-0	
THREADED LIGHTWALL	N/A	12-0	12-0	12-0	12-0	12-0	N/A	N/A	
COPPER	8-0	8-0	10-0	10-0	12-0	12-0	15-0	15-0	
CPVC	5-6	6-0	6-6	7-0	8-0	9-0	N/A	N/A	



HANGER SPACING CHART

SYMBOL LEGEND	
SYMBOL	DESCRIPTION
??	DIMENSION FROM FINISHED FLOOR UP TO CENTERLINE OF PIPE (FEET & INCHES)
? Bts	DIMENSION FROM BOTTOM OF DECK, DOWN TO CENTERLINE OF PIPE (INCHES)
7-1	CEILING HEIGHT
?	HYDRAULIC CALCULATION REFERENCE POINT
<OH I>	ORDINARY HAZARD GROUP I OCCUPANCY CLASSIFICATION
<OH II>	ORDINARY HAZARD GROUP II OCCUPANCY CLASSIFICATION
---	UNDERGROUND PIPING
---	NEW PIPING
---	FULL HEIGHT WALL
---	LOW WALL (TOP OF WALL IS MORE THAN 18" BELOW SPRINKLERS. NO OBSTRUCTION)



FIRE SPRINKLER PIPING PLAN OF 1ST FLOOR
RELEASED FOR CONSTRUCTION
As Noted on Plan Review

Lee's Summit Fire Department
Lee's Summit, Missouri
04/15/2024

FLOW TEST INFORMATION	
- DATE:	05/22/2023
- BY:	AEGIS FIRE PROTECTION
- STATIC:	77 PSI
- RESIDUAL:	58 PSI
- FLOW:	836 GPM

PROJECT NOTES	
1)	CODES: IBC-2018, NFPA 13-2016
2)	APPROVAL: CITY OF LEES SUMMIT
3)	CONSTRUCTION TYPE: NEW CONSTRUCTION TYPE VB
4)	SCOPE OF WORK: AEGIS FIRE PROTECTION'S WORK STARTS AT THE FLANGE INSIDE THE BUILDING APPROX. 1'-0" A.F.F. AS SHOWN ON THIS DRAWING, AND IS TO PROVIDE FIRE PROTECTION THROUGHOUT THE 14,300 SQ.FT. BUILDING PER NFPA 13-2016 AND CONTRACT DOCUMENTS.
5)	PIPE SIZING IS BASED ON HYDRAULIC CALCULATIONS AND NFPA 13-2016
6)	ALL AREAS ARE CLASSIFIED ORDINARY HAZARD GROUP II, UNLESS NOTED OTHERWISE
7)	IDENTIFICATION AND LABELING OF PIPING TO BE BY OTHERS
8)	PROTECTION OF PIPING WHERE SUBJECT TO EARTHQUAKES IS NOT REQUIRED.

PIPE AND FITTINGS	
1)	ALL NEW WET SYSTEM GROOVED PIPING - BLACK STEEL SCHEDULE 10 OR EQUAL - STANDARD AND LIGHT WEIGHT, GROOVED, WELDED, PLAIN-END SOCKET, OR MECHANICAL TEE FITTINGS
2)	ALL NEW WET SYSTEM THREADED PIPING - BLACK STEEL SCHEDULE 40 OR EQUAL - STANDARD WEIGHT SCREWED FITTINGS

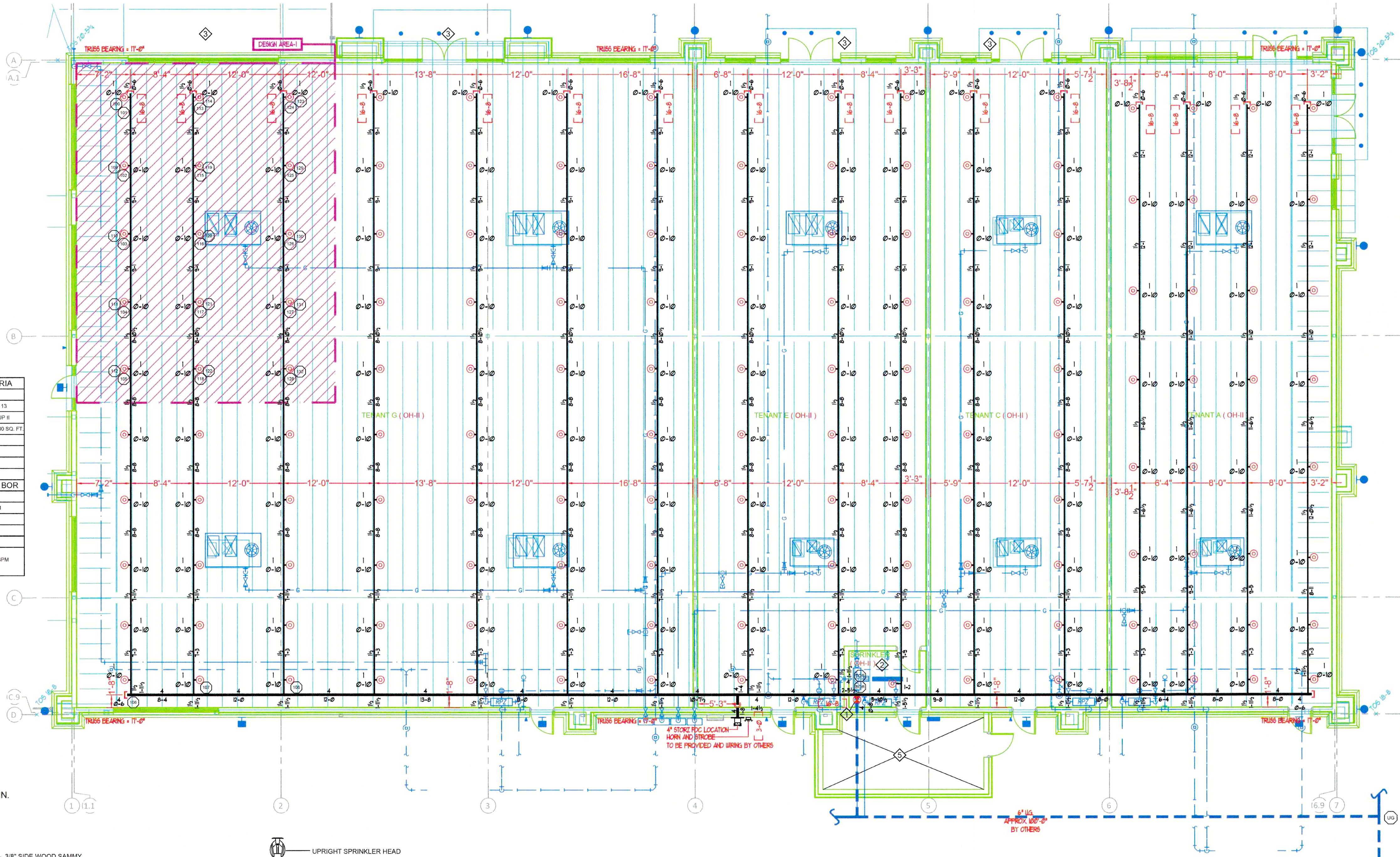
SPRINKLER LEGEND (ENTIRE PROJECT)	
SYMBOL	MANUFACTURER
⊙	RELIABLE
MODEL	F1FR80
RESPONSE	QUICK
TYPE	UPRIGHT
SPRINKLER ID	RA6322
FINISH	BRASS
DROP/SPRIG	1" SPRIG
ORIFICE	3/4"
N.P.T.	3/4"
K FACTOR	8.0
TEMP.	200F
LIGHT HAZARD MIN AREA	6
ORD. HAZARD MIN AREA	15
ORD. HAZARD MAX AREA	225
ESCUICHEON	N/A
TOTAL	152

CONTRACTOR SHALL USE SPRINKLERS LISTED. (OR EQUAL)

* - IF SPRINKLER IS WITHIN 1'-0" RADIUS OF DIFFUSER, INTERMEDIATE TEMPERATURE SHALL BE USED.

** - IN AREAS WITH CEILING MOUNTED LIGHTS, 2-PIECE DEEP ESCUTCHEONS SHALL BE USED.

GENERAL NOTES	
1)	SPRINKLER SYSTEMS ARE TO BE MAINTAINED IN ACCORDANCE WITH NFPA #25. THIS IS OWNER'S RESPONSIBILITY UPON CONTRACTOR'S SUBSTANTIAL COMPLETION.
2)	ALL ALARM AND SUPERVISORY SWITCHES ARE TO BE MONITORED BY A REMOTE MONITORING STATION. (BY OTHERS)
3)	INSTALLATION TO BE IN ACCORDANCE WITH MINIMUM REQUIREMENTS OF NFPA #13. WHETHER INDICATED ON THE DRAWINGS OR NOT, THE FOLLOWING IS TO BE PROVIDED: - SUPERVISION OF VALVES CONTROLLING WATER SUPPLIES - LOCAL AUDIBLE ALARM - QUICK RESPONSE SPRINKLERS IN ALL LIGHT HAZARD OCCUPANCIES - ADEQUATE SUPPORT OF ALL PIPE AND COMPONENTS - INSPECTOR'S TEST CONNECTION FOR EACH SYSTEM - PROVISION FOR FLUSHING AND DRAINING OF ALL NEW SPRINKLER SYSTEM PIPING - PROTECTION OF PIPING WHERE SUBJECT TO FREEZING. THIS IS OWNER'S RESPONSIBILITY UPON CONTRACTOR'S SUBSTANTIAL COMPLETION - PROTECTION OF RATED WALL/FLOOR PENETRATIONS WITH LISTED FIRE-STOP ASSEMBLIES - HYDRAULIC CALCULATION PLACARD ON SYSTEM RISER - SPARE SPRINKLER HEAD CABINET WITH HEADS AND WRENCHES PER NFPA #13
4)	ALL NEW MATERIALS TO BE U.L. LISTED, OR AS ACCEPTABLE TO THE AUTHORITY HAVING JURISDICTION BASED ON PUBLISHED RATINGS, DATA, TESTS, ETC.
5)	WELDING IS TO BE IN ACCORDANCE WITH NFPA #13, INCLUDING WELDER CERTIFICATION AND IDENTIFICATION STAMP.
6)	ACCEPTANCE TESTS TO BE IN ACCORDANCE WITH NFPA #13.
7)	SPRINKLER HEAD SPACING, LOCATION, POSITION, AND TEMPERATURE, AS WELL AS MINIMUM GPM AND PSI REQUIREMENTS ARE TO BE IN ACCORDANCE WITH NFPA #13 AND MANUFACTURER'S DATA. VERIFY ALL SPRINKLER HEADS ARE UNOBSTRUCTED. INSTALL HIGHER TEMPERATURE HEADS NEAR HEAT SOURCES AS REQUIRED PER NFPA #13



NORTH

DATE

REVISIONS

AEGIS
FIRE PROTECTION
Shielding Lives and Property

Aegis Fire Protection, LLC
Corporate: 11936 W. 119th St. #262 Overland Park, KS 66213
Phone: 913-925-0343 Fax: 913-322-4475

ENGINEER'S STAMP

JOB NO.
DPC-19187-140

JOB NAME:
STREETS OF WEST PRYOR
LOT 13
1020 NW PRYOR ROAD
LEES SUMMIT, MISSOURI

SYSTEM TYPE: WET
TOTAL HEADS: 152
AHJ: CITY & OWNER
SCALE: SEE PLAN
DESIGNED BY: BD
CHECKED BY: KS
DATE: 03/19/2024

SHEET NO.
FP1
1 OF 1